

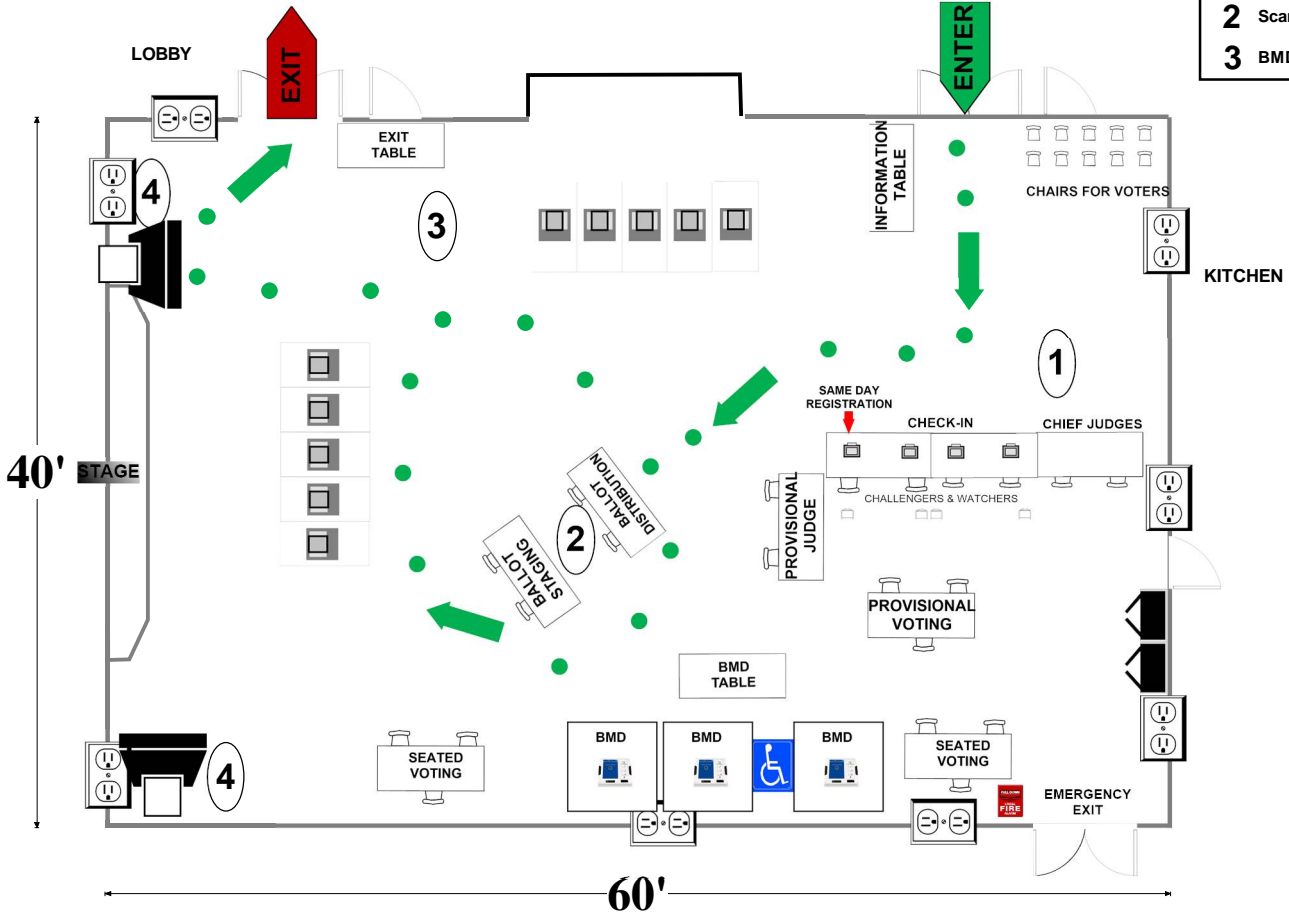
03-01 Poolesville Elementary School

19565 Fisher Ave
Poolesville, MD 20837

ALL-PURPOSE ROOM

RECOMMENDED ROOM LAYOUT

- 10 Voting Booths
- 6 Seated Voting
- 4 Poll Books
- 2 Scanners
- 3 BMDs



- 6'X2 1/2' Table
- BMD Ballot Marking Device
- Voting Booths with 2 1/2'X5' clearance
- Vending Machine
- Scanner
- Electronic poll book
- Window
- 1 Voter Travel
- 2 plug outlet
- Fire alarm

Montgomery County
Board of Elections
8/19/2024

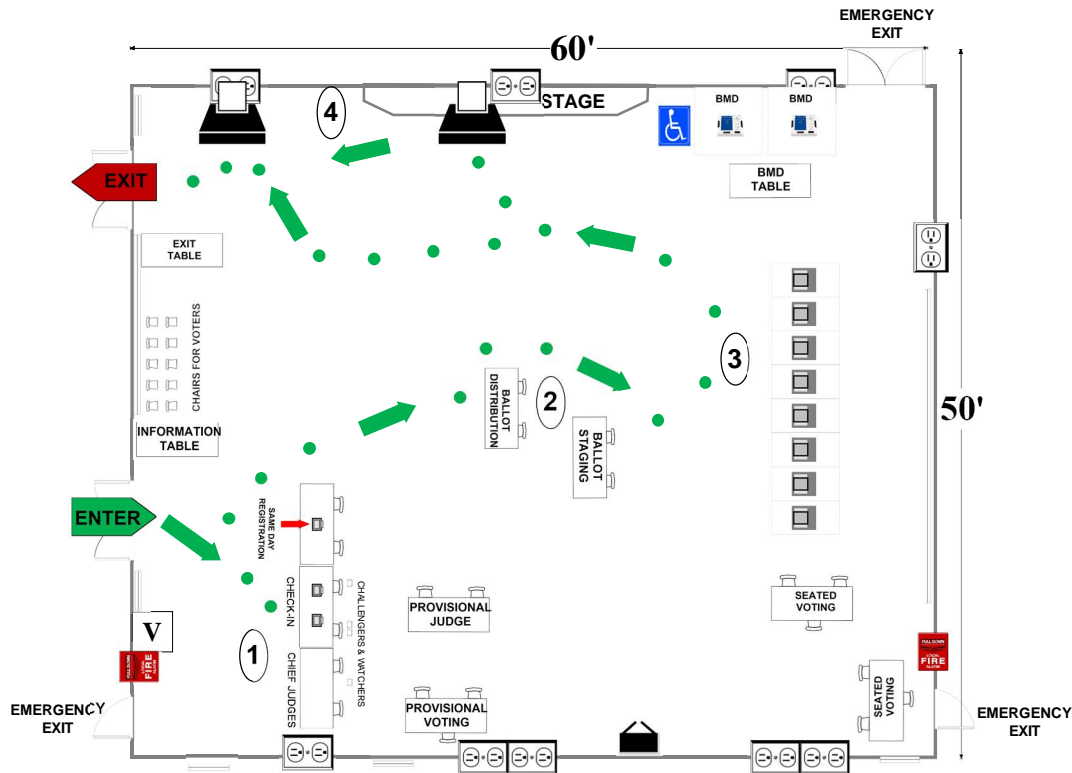
03-02 John Poole Middle School

17014 Tom Fox Ave
 Poolesville, MD 20837

CAFETERIA

RECOMMENDED ROOM LAYOUT

- | | |
|---|---------------|
| 8 | Voting Booths |
| 6 | Seated Voting |
| 3 | Poll Books |
| 2 | BMDs |
| 2 | Scanners |



- | | | | | | |
|--|--|--|---|--|----------------|
| | 6'X2 1/2' Table | | Ballot Marking Device | | 1 Voter Travel |
| | Voting Booths with 2 1/2' X 5' clearance | | Vending Machine | | 2 plug outlet |
| | Transfer Cart | | Electronic Poll Book | | Fire alarm |
| | Window | | Scanner | | Column |
| | Bookcase | | Scanner Judge stands
2 - 3 feet from scanner | | |

Montgomery County
 Board of Elections

8/19/2024