

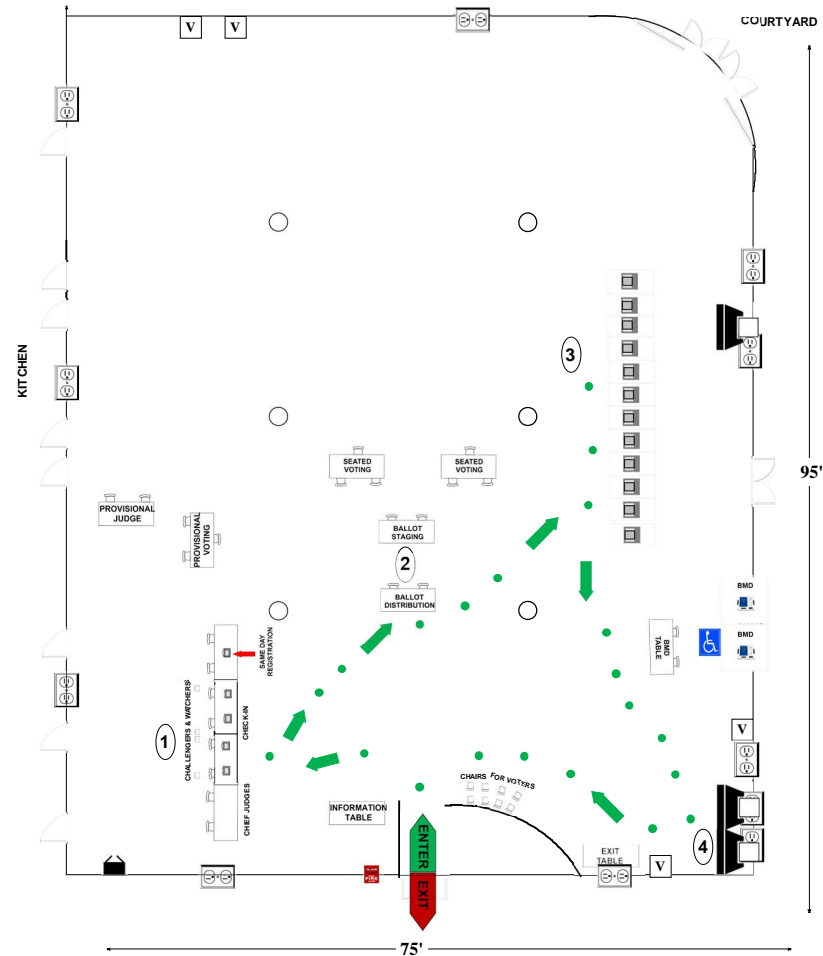
04-01 Rockville High School

2100 Baltimore Rd
Rockville, MD 20851

RECOMMENDED ROOM LAYOUT

CAFETERIA

- 12** Voting Booths
- 6** Seated Voting
- 5** Poll Books
- 2** BMDs
- 3** Scanners



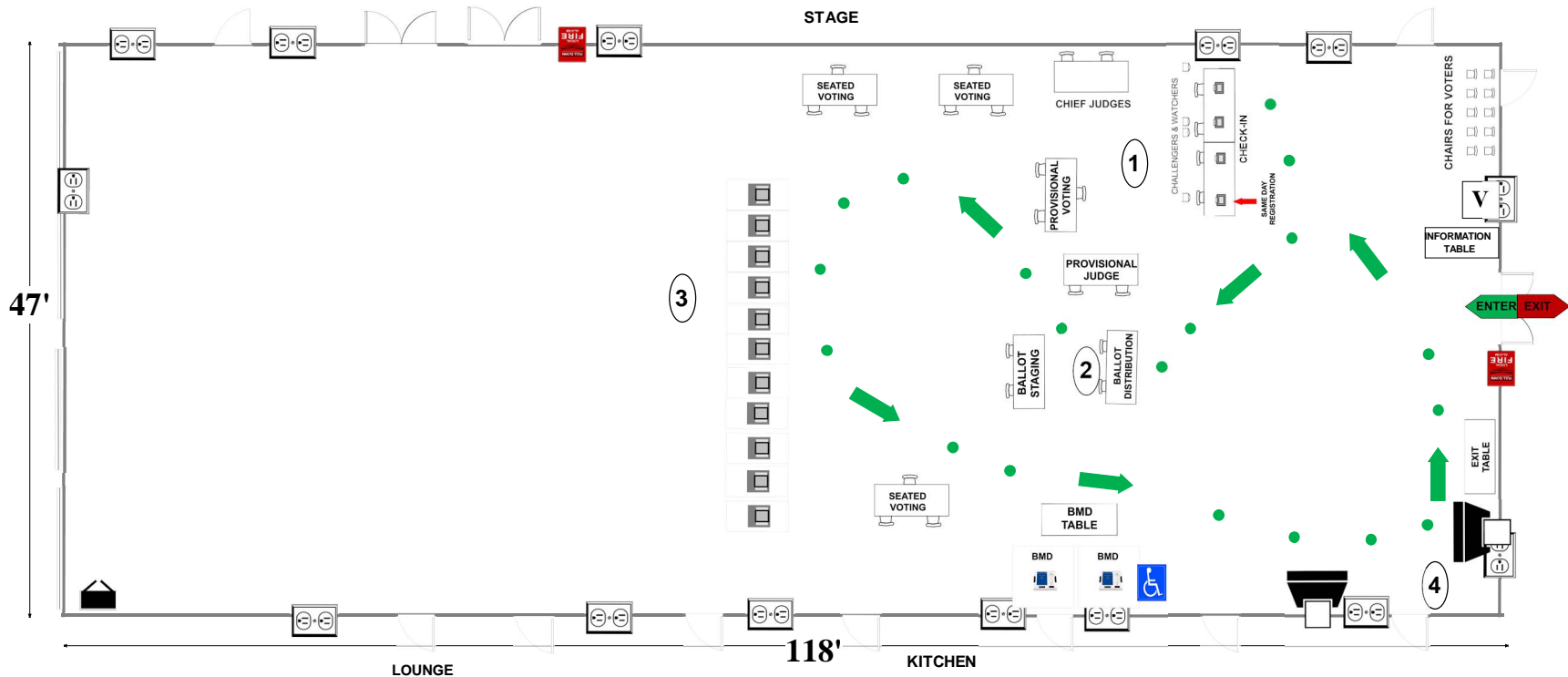
- 6'x2 1/2' Table
- Ballot Marking Device
- 1 Voter Travel
- Voting Booths with 2 1/2'x5' clearance
- Vending Machine
- 2 plug outlet
- Electronic Poll Book
- Transfer Cart
- Scanner
- Fire alarm
- Window
- Scanner Judge stands 2 - 3 feet from scanner
- Column

Montgomery County
Board of Elections
8/19/2024

04-02 Julius West Middle School
 651 Great Falls Rd
 Rockville, MD 20850

RECOMMENDED ROOM LAYOUT

- 11** Voting Booths
- 9** Seated Voting
- 4** Poll Books
- 2** BMDs
- 2** Scanners



- 6'X2 1/2' Table
- Voting Booths with 2 1/2'X5' clearance
- Transfer Cart
- Window
- Ballot Marking Device
- Vending Machine
- Electronic Poll Book
- Scanner
- Voter Travel
- 2 plug outlet
- Fire alarm
- Scanner Judge stands
2 - 3 feet from scanner

Montgomery County
 Board of Elections
 8/19/2024

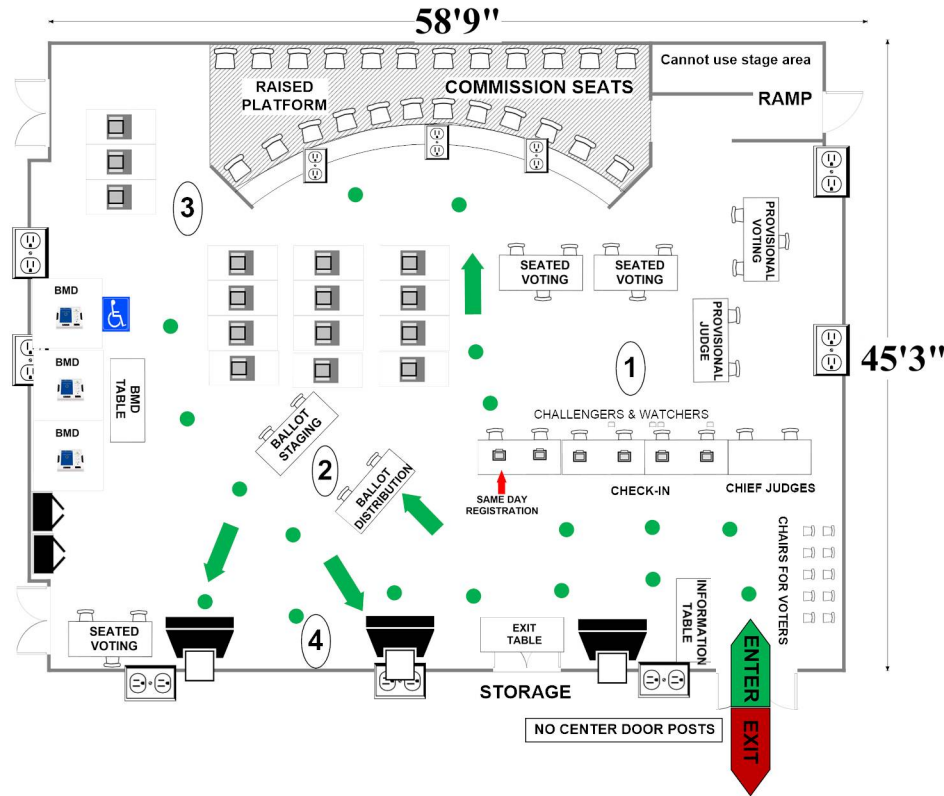
04-03 Carver Educational Services Center

850 Hungerford Dr
Rockville, MD 20850

AUDITORIUM

RECOMMENDED ROOM LAYOUT

- 15** Voting Booths
- 9** Seated Voting
- 6** Poll Books
- 3** BMDs
- 3** Scanners



- | | | | | | |
|--|--|--|---|--|----------------|
| | 6'X2 1/2' Table | | Ballot Marking Device | | 1 Voter Travel |
| | Voting Booths with 2 1/2'X5' clearance | | Vending Machine | | 2 plug outlet |
| | Transfer Cart | | Electronic Poll Book | | Fire alarm |
| | Window | | Scanner | | |
| | | | Scanner Judge stands
2 - 3 feet from scanner | | |

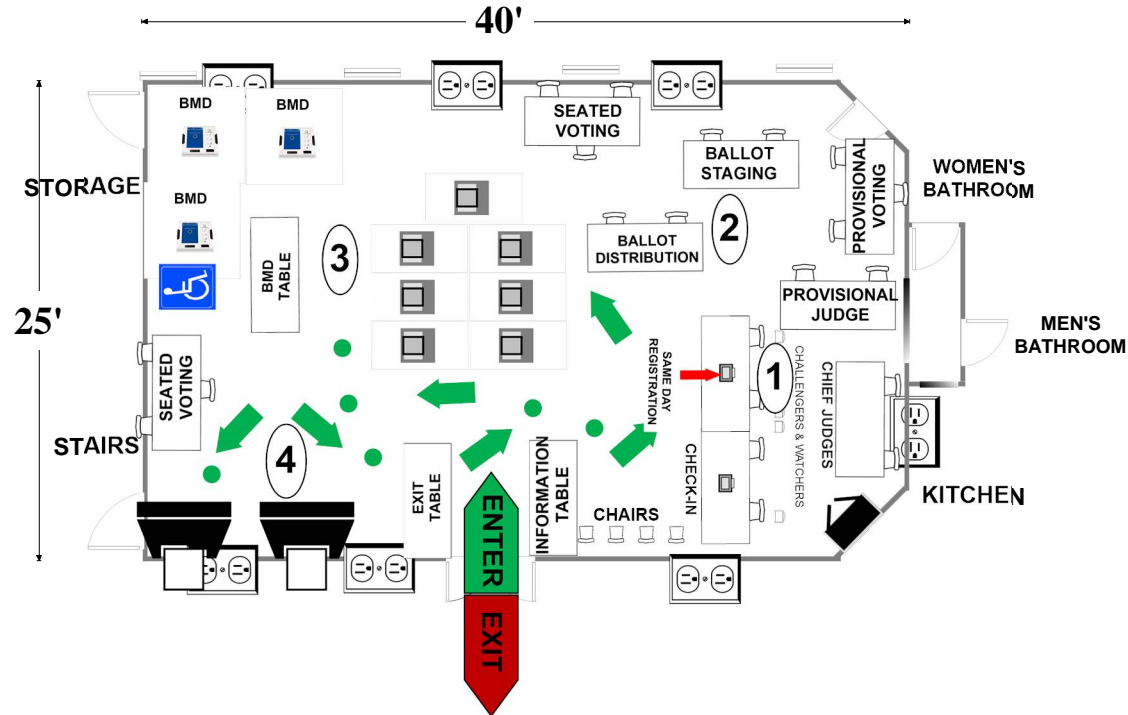
Montgomery County
Board of Elections
8/19/2024

04-04 Parkside Clubhouse North
 10522 Montrose Ave
 (ACTUALLY on Weymouth St)
 Bethesda, MD 20814

NORTH CLUBHOUSE

RECOMMENDED ROOM LAYOUT

- 7** Voting Booths
- 6** Seated Voting
- 2** Poll Books
- 3** BMDs
- 2** Scanners



- | | | | | | |
|--|-------------------------------------|--|---|----------|---------------|
| | 6'X2½' Table | | Ballot Marking Device | 1 | Voter Travel |
| | Voting Booths with 2½'X5' clearance | | Vending Machine | | 2 plug outlet |
| | Transfer Cart | | Electronic Poll Book | | Scanner |
| | Window | | Scanner Judge stands
2 - 3 feet from scanner | | Fire alarm |

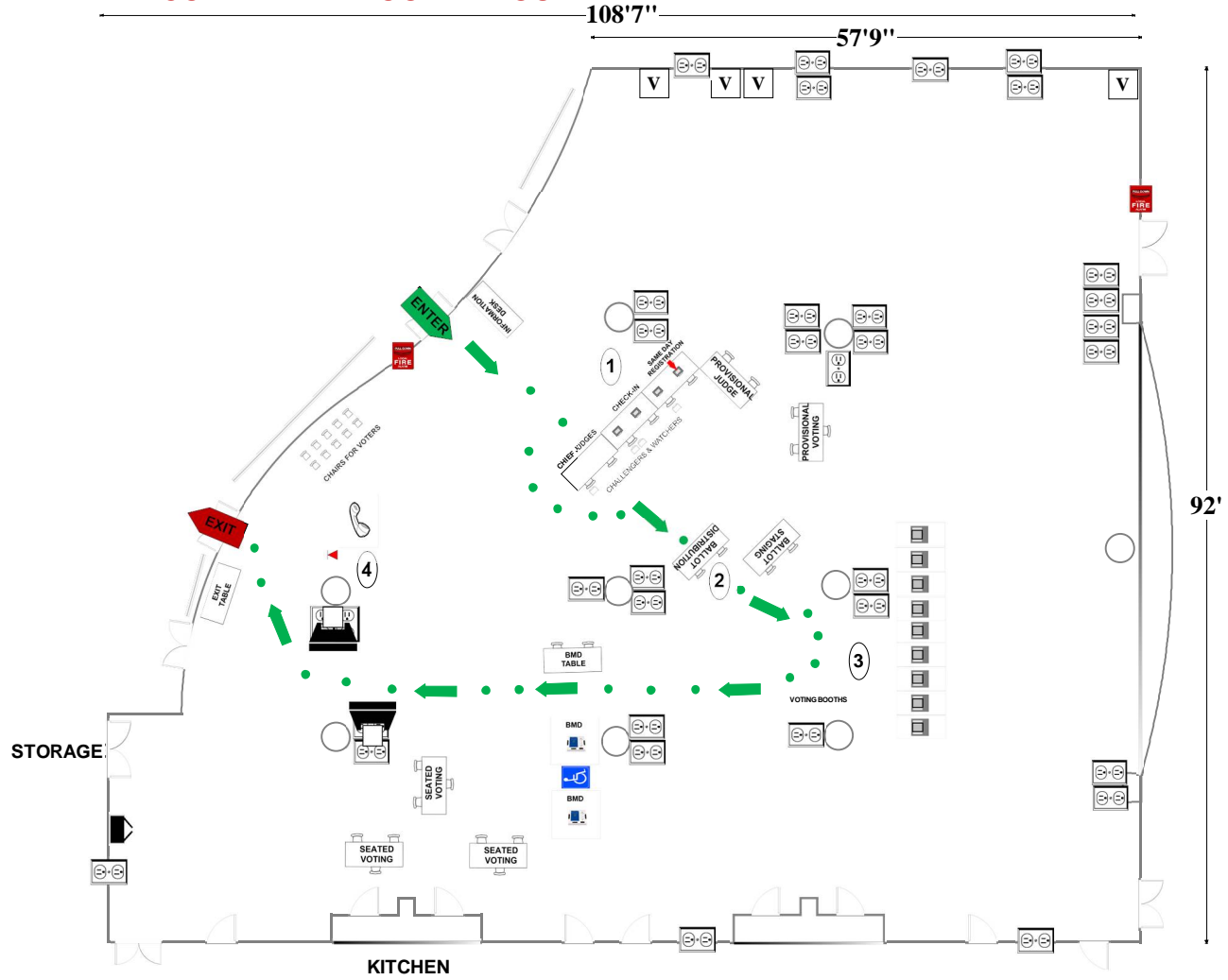
Montgomery County
 Board of Elections
 8/19/2024

04-05 Richard Montgomery High School
 250 Richard Montgomery Drive
 Rockville, MD 20852

CAFETERIA

- 9** Voting Booths
- 9** Seated Voting
- 4** Poll Books
- 2** BMDs
- 2** Scanners

RECOMMENDED ROOM LAYOUT



- | | | | | | |
|--|--|--|--|--|---------------|
| | 6'X2 1/2' Table | | Ballot Marking Device | | Voter Travel |
| | Voting Booths with 2 1/2'X5' clearance | | Vending Machine | | 2 plug outlet |
| | Transfer Cart | | Electronic Poll Book | | Fire alarm |
| | Window | | Scanner | | Column |
| | Bookcase | | Scanner Judge stands 2 - 3 feet from scanner | | |

Montgomery County
 Board of Elections
 8/19/2024

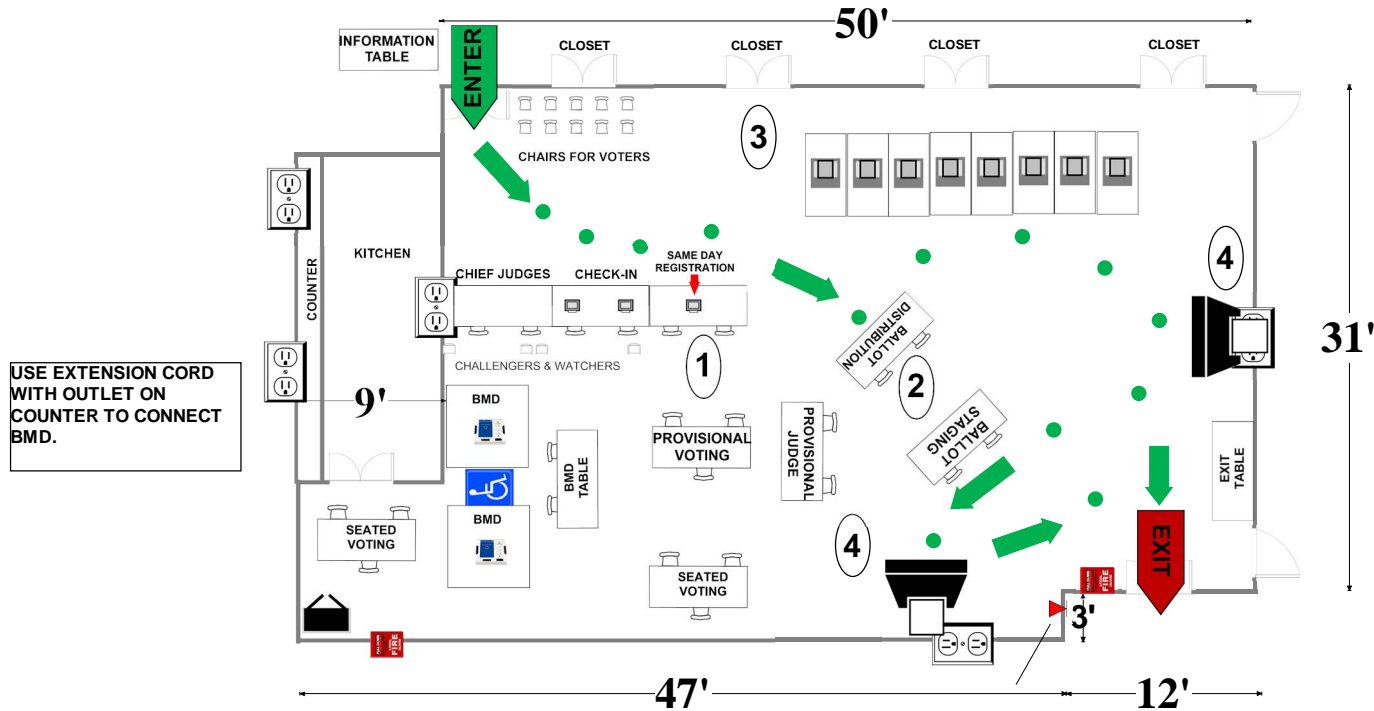
04-06 LONE OAK SCHOOL CENTER

1010 Grandin Ave
Rockville, MD 20851

ALL-PURPOSE ROOM

RECOMMENDED ROOM LAYOUT

- | | |
|----------|---------------|
| 8 | Voting Booths |
| 6 | Seated Voting |
| 3 | Poll Books |
| 2 | BMDs |
| 2 | Scanners |



USE EXTENSION CORD WITH OUTLET ON COUNTER TO CONNECT BMD.

- | | | | | | |
|--|--|--|-----------------------|--|----------------|
| | 6'X2 1/2' Table | | Ballot Marking Device | | 1 Voter Travel |
| | Voting Booths with 2 1/2'X5' clearance | | Vending Machine | | 2 plug outlet |
| | Scanner | | Electronic Poll Book | | Fire alarm |
| | Window | | Black Transfer Cart | | |

Montgomery County
Board of Elections
8/19/2024

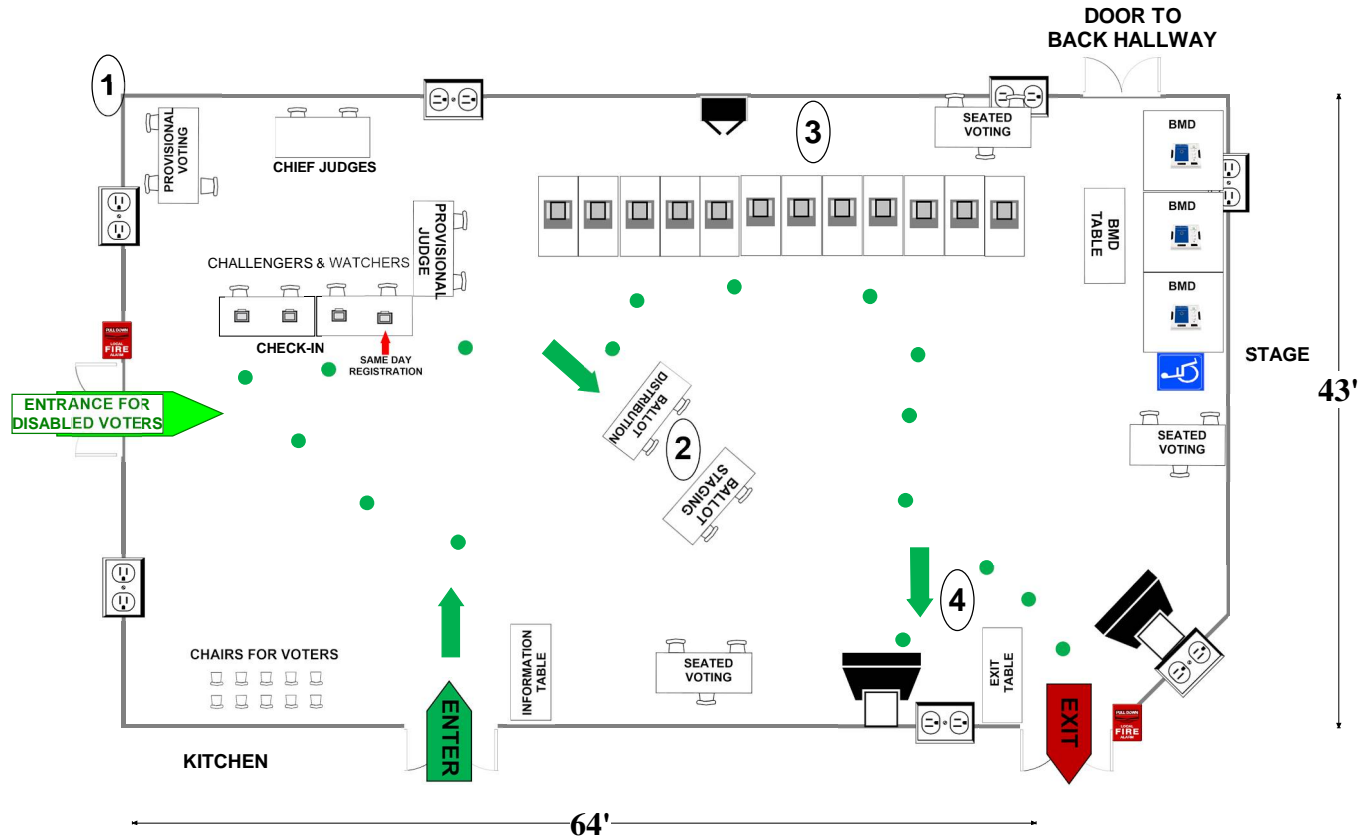
04-07/04-27/04-38 Twinbrook Elementary School

5911 Ridgway Ave
Rockville, MD 20851

ALL-PURPOSE ROOM

- | | |
|-----------|---------------|
| 12 | Voting Booths |
| 9 | Seated Voting |
| 4 | Poll Books |
| 3 | BMDs |
| 2 | Scanners |

RECOMMENDED ROOM LAYOUT



- | | | | | | |
|--|--|--|-------------------------|--|---------------|
| | 6'X2 1/2' Table | | Ballot Marking Device | | Voter Travel |
| | Voting Booths with 2 1/2'X5' clearance | | Vending Machine | | 2 plug outlet |
| | Transfer Cart | | Electronic Poll Book | | Fire alarm |
| | Window | | Scanner | | |
| | | | Scanner Judge stands | | |
| | | | 2 - 3 feet from scanner | | |

Montgomery County
Board of Elections

8/19/2024

04-08/04-33 Garrett Park Elementary School

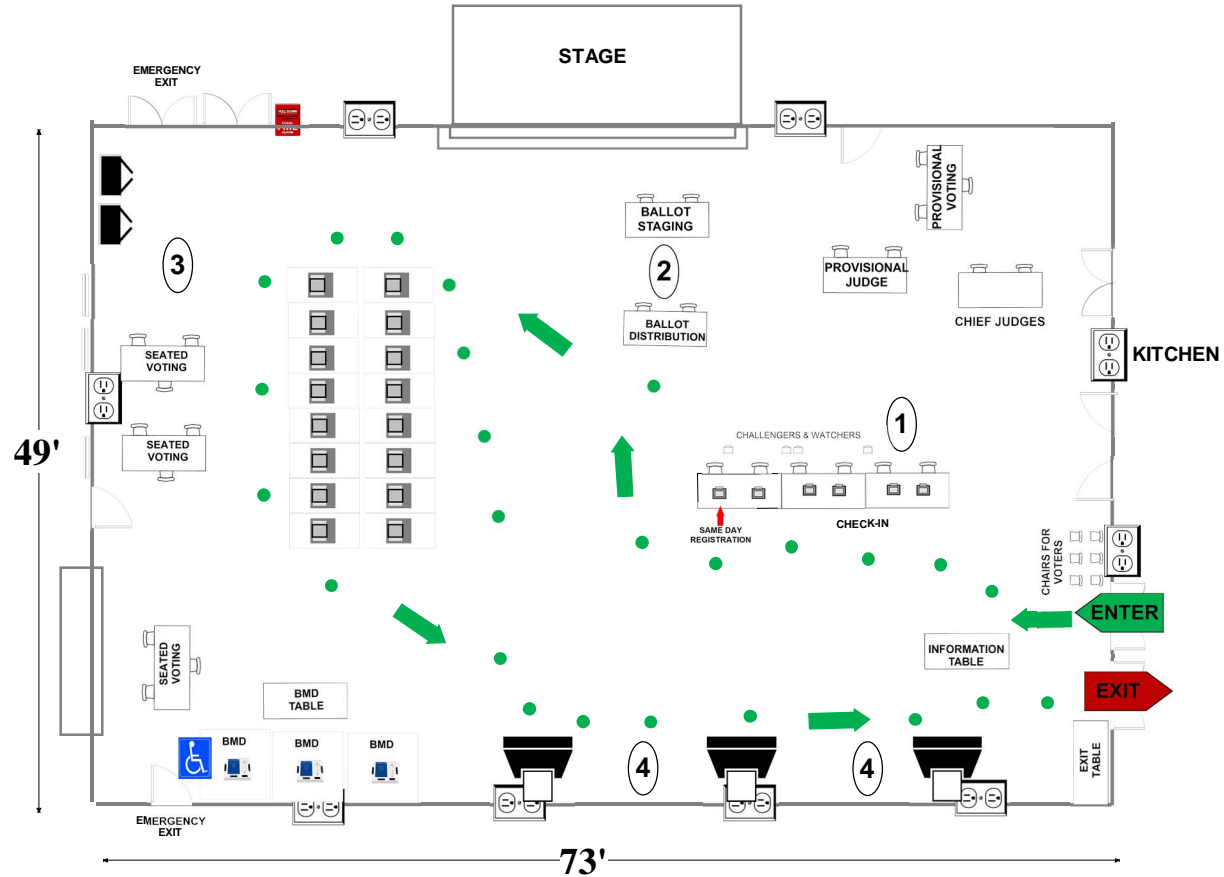
4810 Oxford St

Kensington, MD 20895

ALL-PURPOSE ROOM

RECOMMENDED ROOM LAYOUT

- 16 Voting Booths
- 9 Seated Voting
- 6 Poll Books
- 3 BMDs
- 3 Scanners



- 6'X2 1/2' Table
- Voting Booths with 2 1/2'X5' clearance
- Transfer Cart
- Window
- Ballot Marking Device
- Vending Machine
- Electronic Poll Book
- Scanner
- Scanner Judge stands
2 - 3 feet from scanner**
- 1 Voter Travel
- 2 plug outlet
- Fire alarm

Montgomery County
Board of Elections

8/19/2024

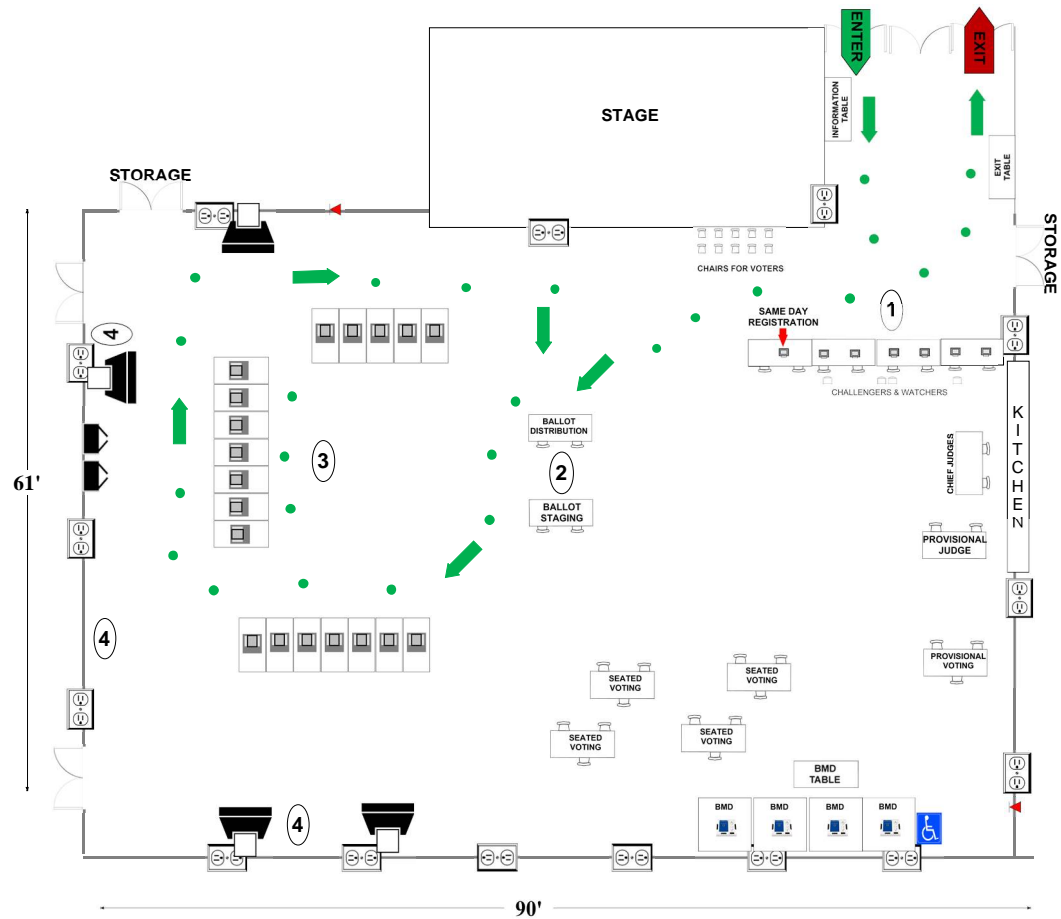
04-10/04-18 Tilden Middle School

6300 Tilden Ln
Rockville, MD 20852

RECOMMENDED ROOM LAYOUT

CAFETERIA

- 19 Voting Booths
- 12 Seated Voting
- 7 Poll Books
- 4 BMDs
- 4 Scanners



- | | | | | | |
|--|--|--|-----------------------|--|----------------|
| | 6'X2 1/2' Table | | Ballot Marking Device | | Voter Travel |
| | Voting Booths with 2 1/2'X5' clearance | | Vending Machine | | 2 plug outlet |
| | Transfer Cart | | Electronic Poll Book | | Fire alarm |
| | Window | | Scanner | | Land line jack |
| | | | Column | | |

Montgomery County
Board of Elections

10/10/2024

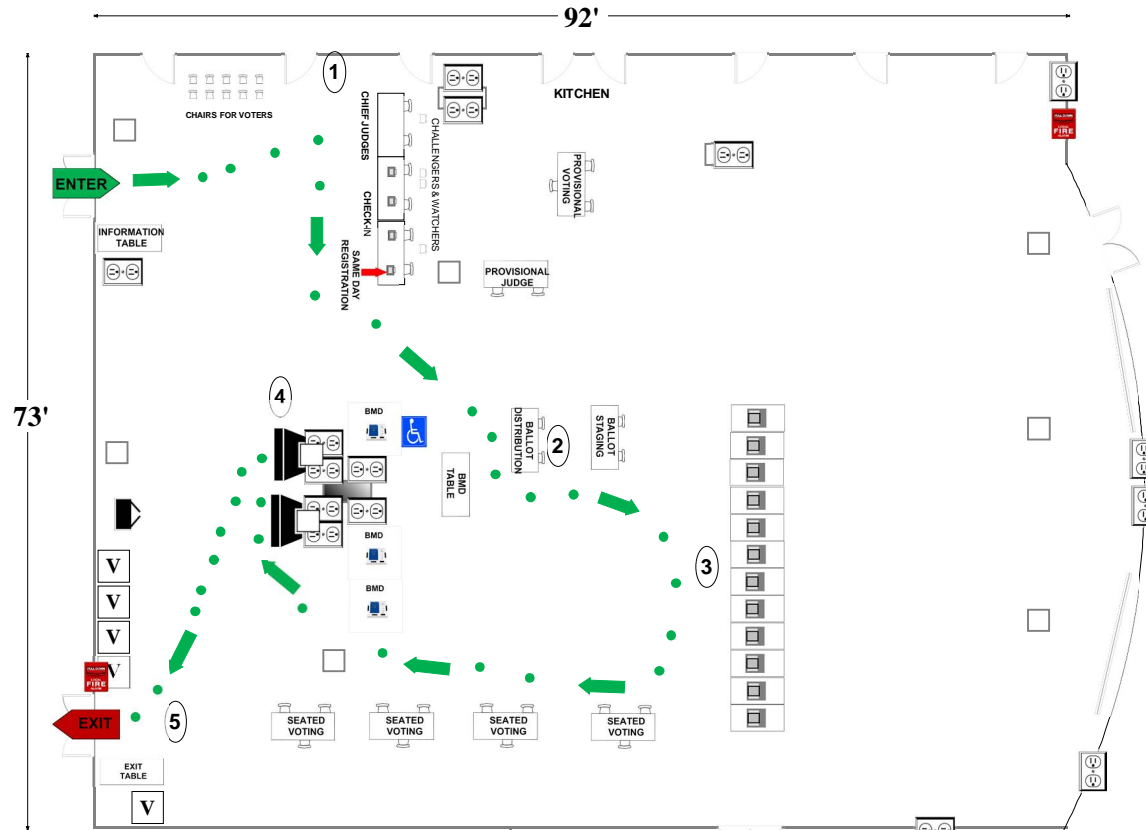
04-12 Winston Churchill High School

11300 Gainsborough Rd
Potomac, MD 20854

CAFETERIA

RECOMMENDED ROOM LAYOUT

- 12** Voting Booths
- 12** Seated Voting
- 4** Poll Books
- 3** BMDs
- 2** Scanners



- | | | | | | |
|--|--|--|---|--|---------------|
| | 6'X2 1/2' Table | | Ballot Marking Device | | Voter Travel |
| | Voting Booths with 2 1/4'X5' clearance | | Vending Machine | | 2 plug outlet |
| | Transfer Cart | | Electronic Poll Book | | Fire alarm |
| | Window | | Scanner | | Column |
| | Bookcase | | Scanner Judge stands
2 - 3 feet from scanner | | |

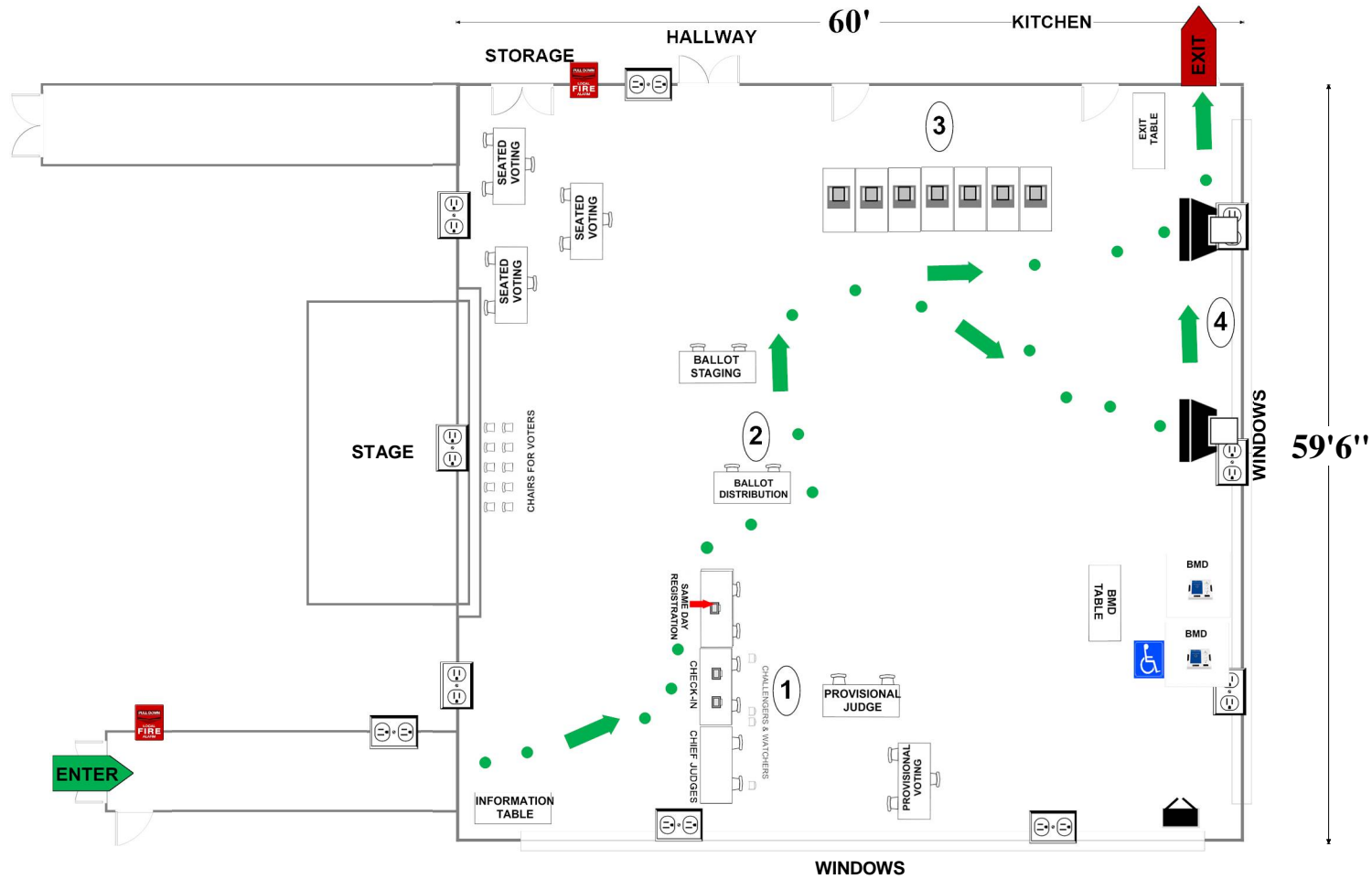
04-13 Farmland Elementary School

7000 Old Gate Rd.
Rockville, MD 20852

RECOMMENDED ROOM LAYOUT

ALL-PURPOSE ROOM

- 7** Voting Booths
- 9** Seated Voting
- 3** Poll Books
- 2** BMDs
- 2** Scanners



- 6'X2 1/2' Table
- Voting Booths with 2 1/2'X5' clearance
- Transfer Cart
- Window
- Ballot Marking Device
- Vending Machine
- Electronic Poll Book
- Scanner
- Scanner Judge stands**
2 - 3 feet from scanner
- 1 Voter Travel
- 2 plug outlet
- Fire alarm

Montgomery County
Board of Elections
8/19/2024

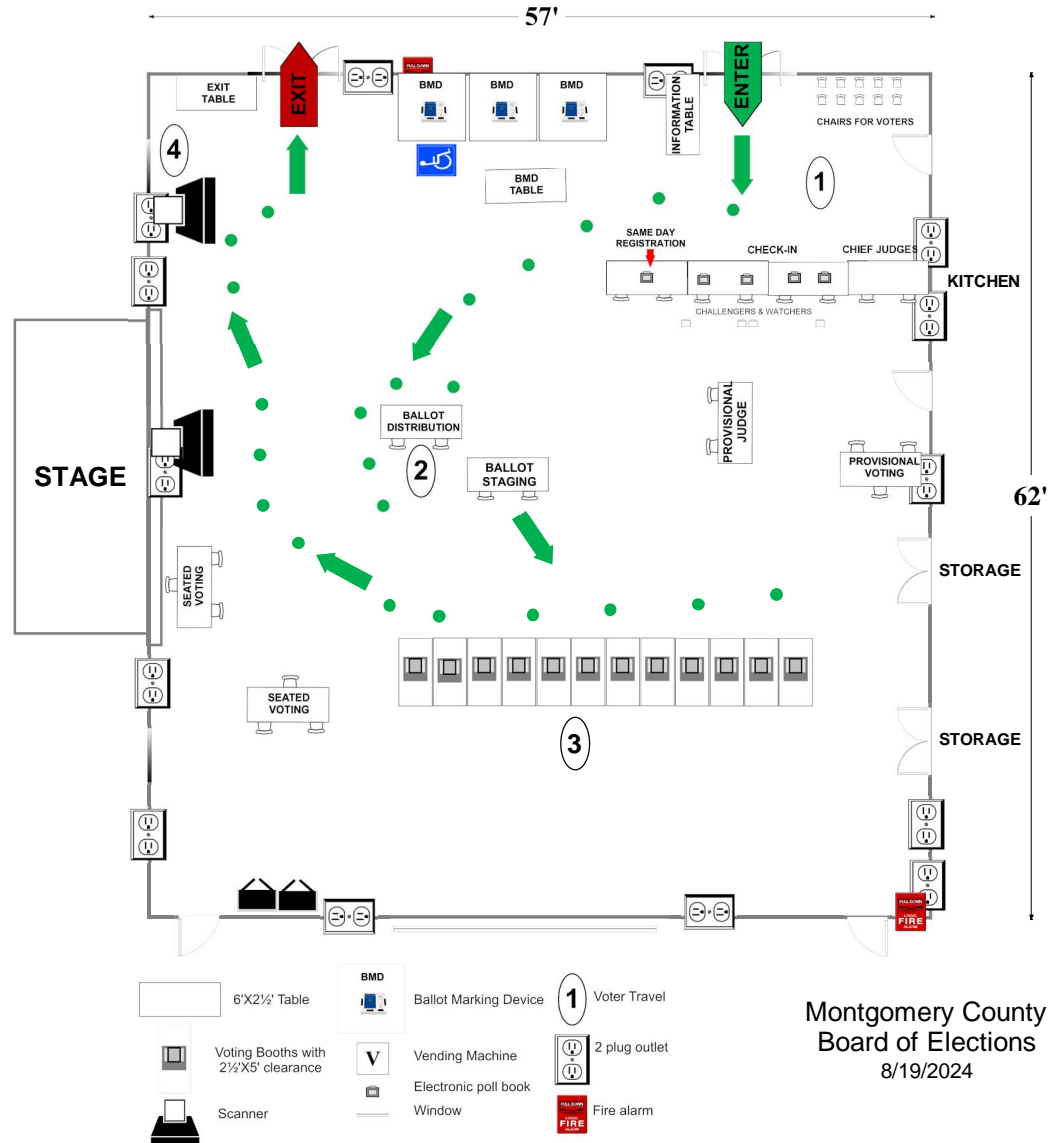
04-14 College Gardens Elementary School

1700 Yale Pl
Rockville, MD 20850

ALL-PURPOSE ROOM

RECOMMENDED ROOM LAYOUT

- | | |
|-----------|---------------|
| 12 | Voting Booths |
| 6 | Seated Voting |
| 5 | Poll Books |
| 3 | BMDs |
| 2 | Scanners |



Montgomery County
Board of Elections
8/19/2024

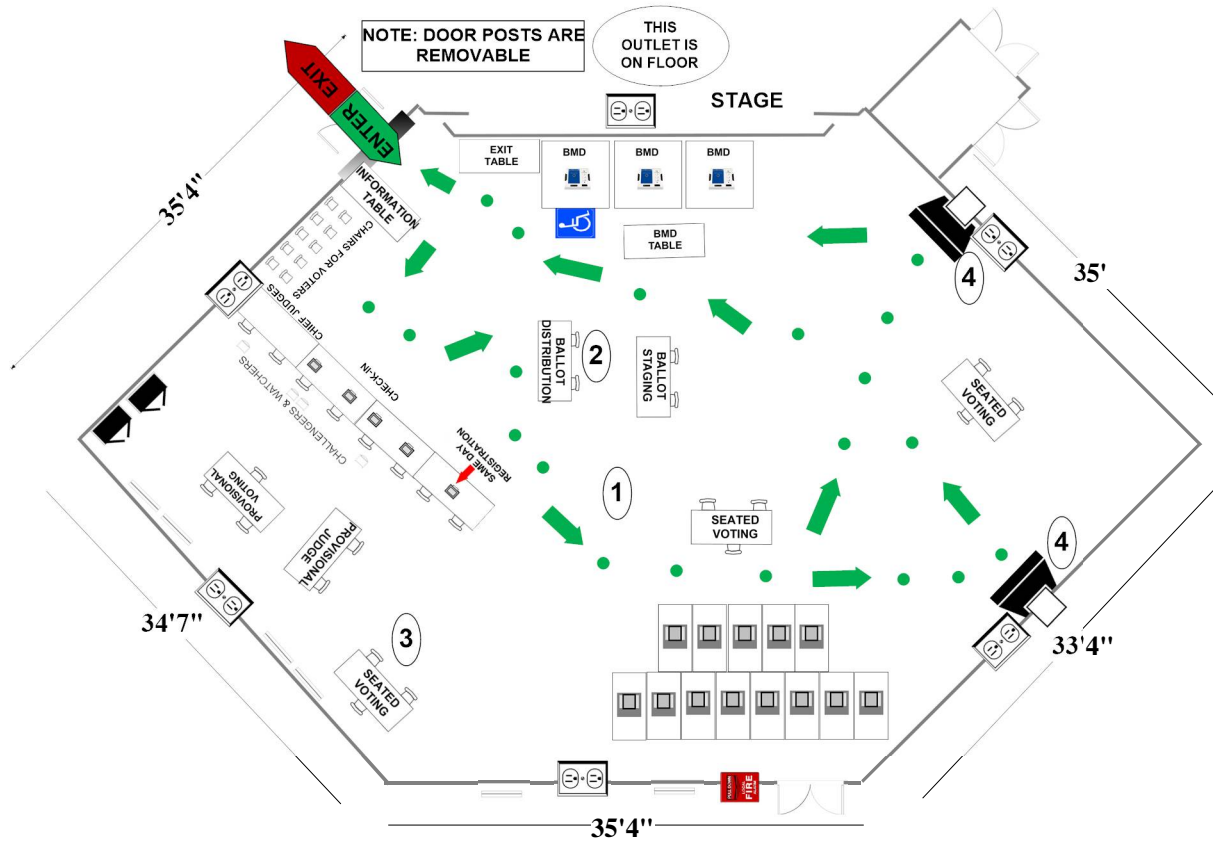
04-15/04-26 Rocking Horse Road Center

4910 Macon Rd
Rockville, MD 20852

**ALL-PURPOSE
ROOM**

RECOMMENDED ROOM LAYOUT

- | | |
|-----------|---------------|
| 13 | Voting Booths |
| 9 | Seated Voting |
| 5 | Poll Books |
| 3 | BMDs |
| 2 | Scanners |



- | | | | | | |
|--|--|--------------------------------|-----------------------|--|---------------|
| | 6'x2 1/2' Table | | Ballot Marking Device | | Voter Travel |
| | Voting Booths with 2 1/2'x5' clearance | | Vending Machine | | 2 plug outlet |
| | Transfer Cart | | Electronic Poll Book | | Fire alarm |
| | Window | | Scanner | | |
| | | Scanner Judge stands | | | |
| | | 2 - 3 feet from scanner | | | |

Montgomery County
Board of Elections
8/28/2024

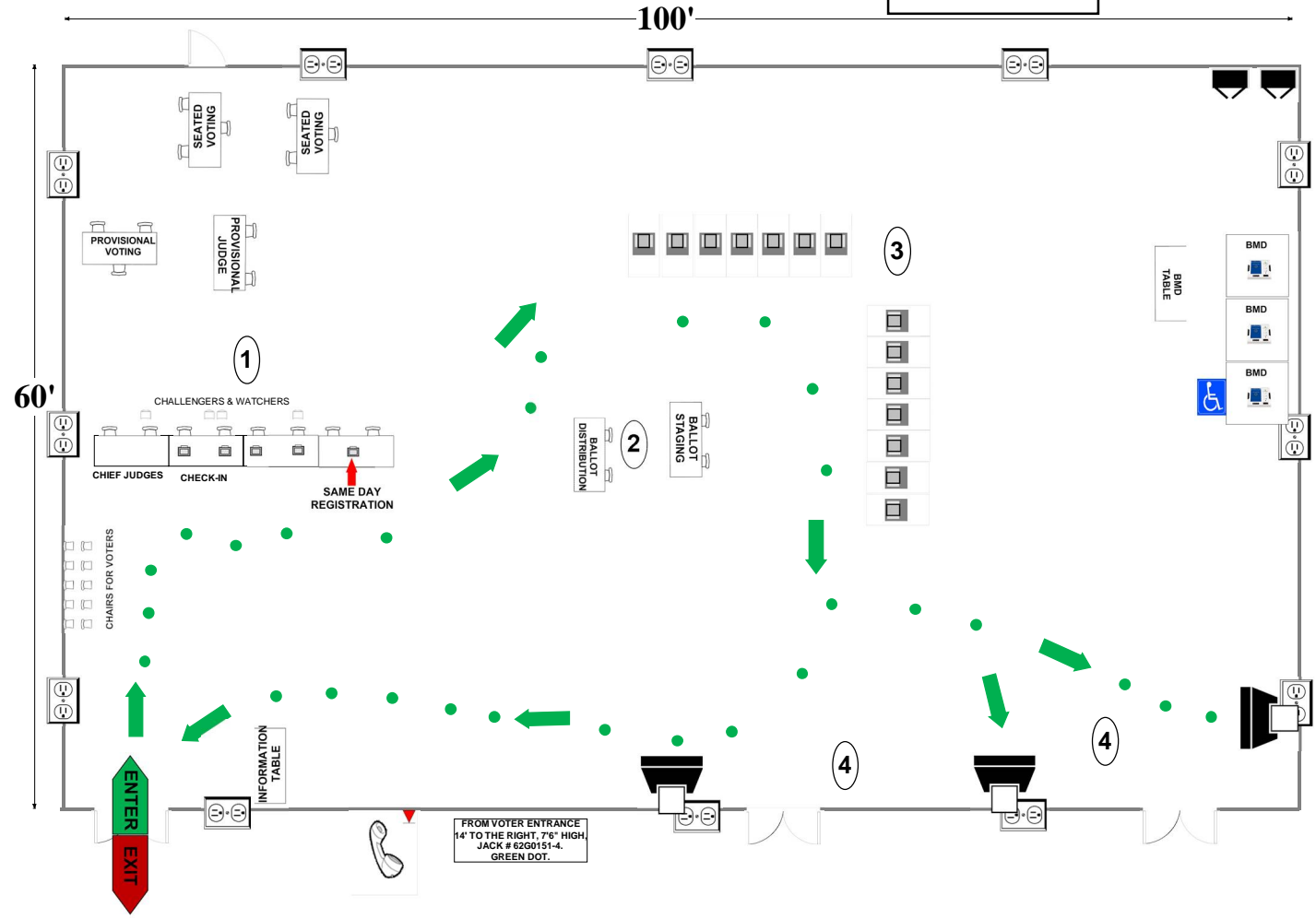
04-16 Thomas S. Wootton High School

2100 Wootton Pkwy.
Rockville, MD 20850

LOWER GYM

RECOMMENDED ROOM LAYOUT

- 14** Voting Booths
- 6** Seated Voting
- 5** Poll Books
- 3** BMDs
- 3** Scanners



- 6'X2 1/2' Table
- Voting Booths with 2 1/2'X5' clearance
- Scanner
- Window
- Ballot Marking Device
- Vending Machine
- Electronic Poll Book
- Black Transfer Cart
- Fire alarm
- Voter Travel
- 2 plug outlet

Montgomery County
Board of Elections
8/29/2024

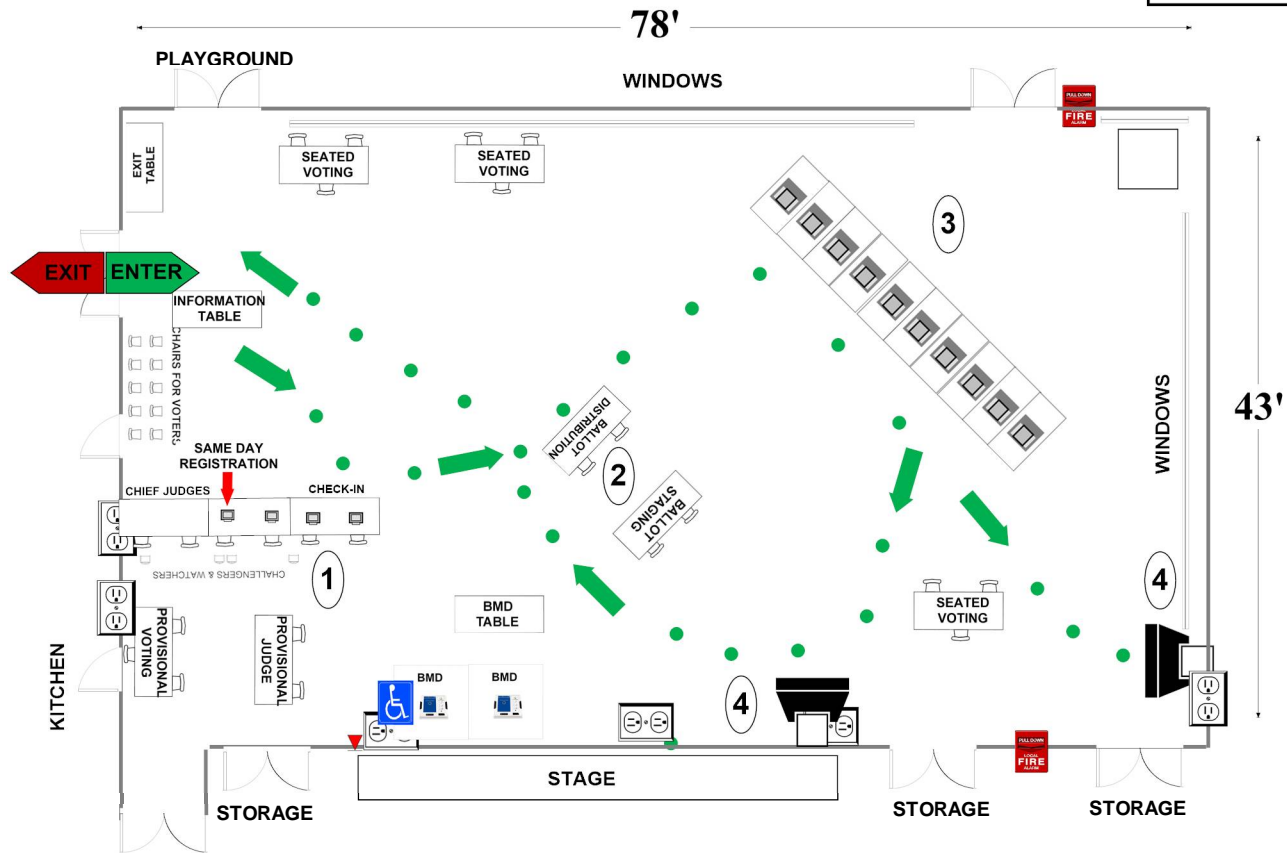
04-17 Luxmanor Elementary School

6201 Tilden Ln
Rockville, MD 20852

RECOMMENDED ROOM LAYOUT

ALL-PURPOSE ROOM

- 10** Voting Booths
- 9** Seated Voting
- 4** Poll Books
- 2** BMDs
- 2** Scanners



- 6'X2 1/2' Table
- Voting Booths with 2 1/2'X5' clearance
- Scanner
- Window
- Ballot Marking Device
- Vending Machine
- Electronic Poll Book
- Black Transfer Cart
- Voter Travel
- 2 plug outlet
- Fire alarm

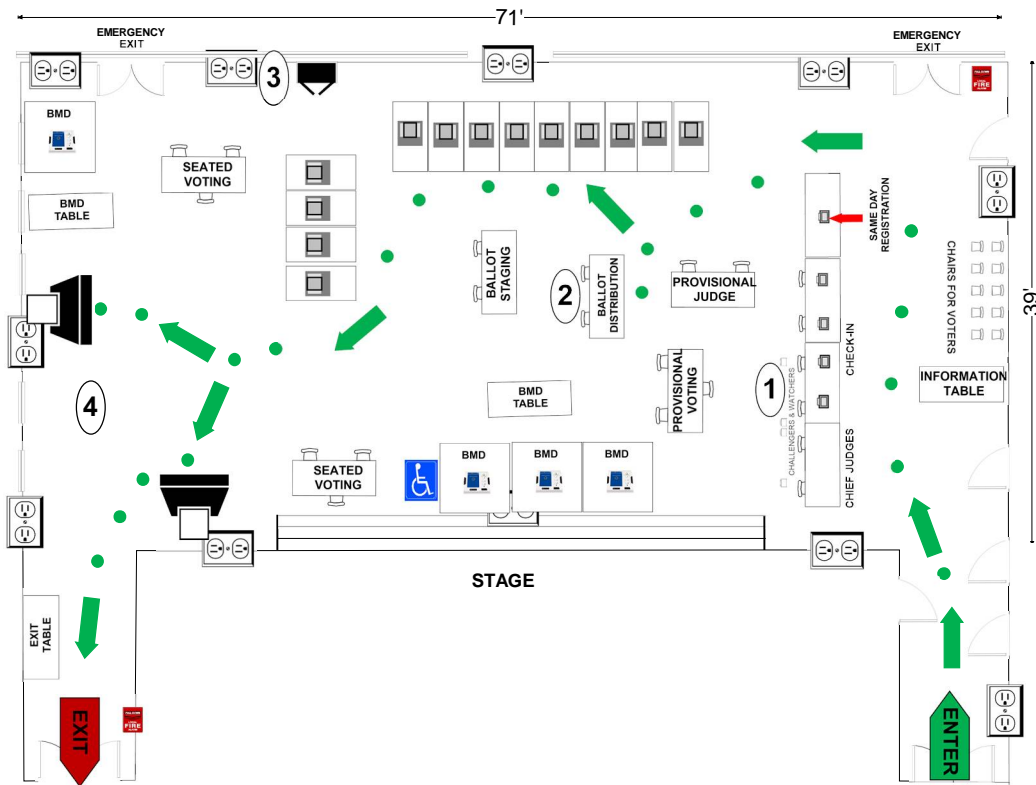
Montgomery County
Board of Elections
10/04/2024

04-19/04-34 Candlewood Elementary School

7210 Osprey Dr
Rockville, MD 20855
RECOMMENDED ROOM LAYOUT

ALL-PURPOSE ROOM

- | | |
|-----------|---------------|
| 13 | Voting Booths |
| 6 | Seated Voting |
| 5 | Poll Books |
| 4 | BMDs |
| 2 | Scanners |



- | | | | | | |
|--|-------------------------------------|--|-------------------------|--|---------------|
| | 6'X2½' Table | | Ballot Marking Device | | Voter Travel |
| | Voting Booths with 2½'X5' clearance | | Vending Machine | | 2 plug outlet |
| | Transfer Cart | | Electronic Poll Book | | Fire alarm |
| | Window | | Scanner | | |
| | | | Scanner Judge stands | | |
| | | | 2 - 3 feet from scanner | | |

Montgomery County
Board of Elections
10/4/2024

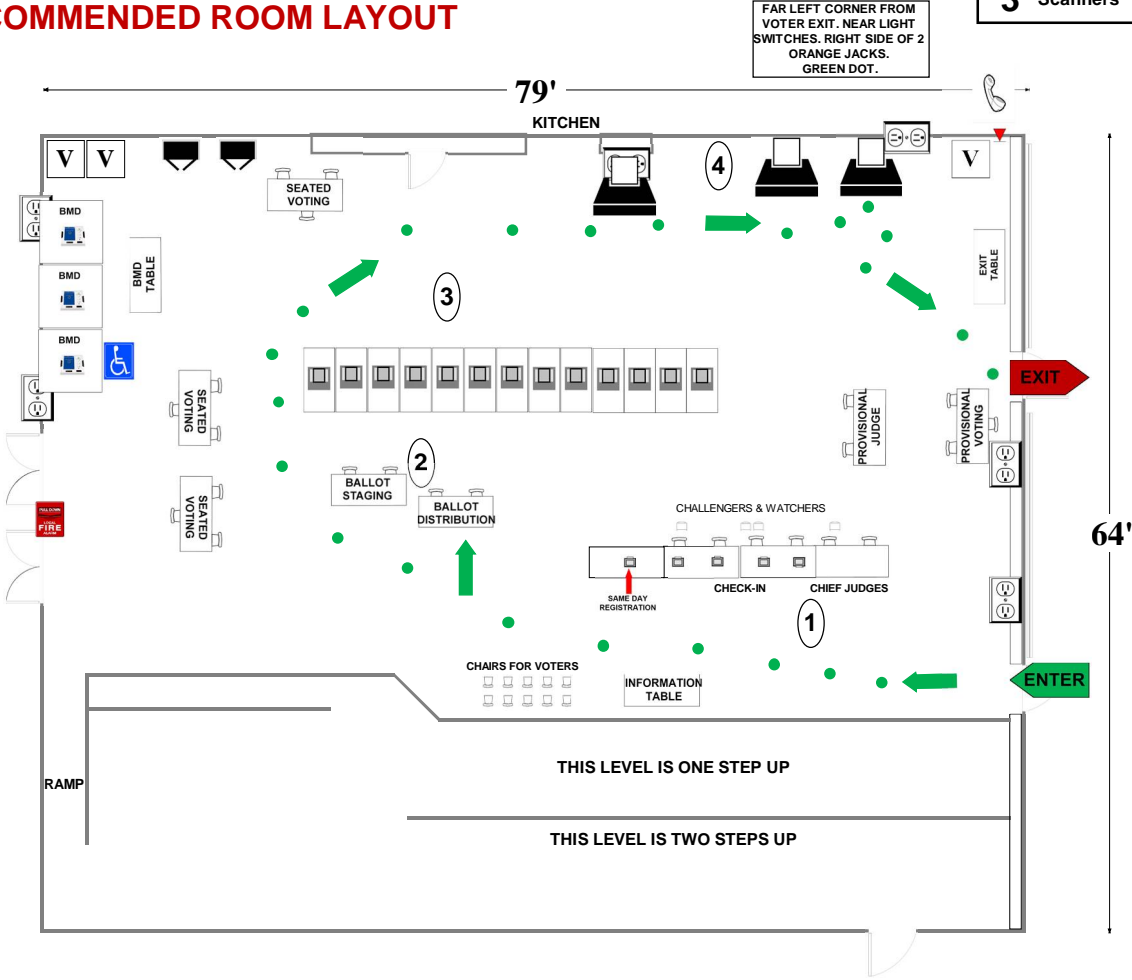
04-20/04-42 Robert Frost Middle School

9201 Scott Drive
Rockville, MD 20850

CAFETERIA

RECOMMENDED ROOM LAYOUT

- 13** Voting Booths
- 9** Seated Voting
- 5** Poll Books
- 3** BMDs
- 3** Scanners



- 6'x2 1/2' Table
- Voting Booths with 2 1/2'x5' clearance
- Transfer Cart
- Window
- Ballot Marking Device
- Vending Machine
- Electronic Poll Book
- Scanner
- Scanner Judge stands
2 - 3 feet from scanner
- Voter Travel
- 2 plug outlet
- Fire alarm

Montgomery County
Board of Elections
8/28/2024

04-21 Fallsmead Elementary School

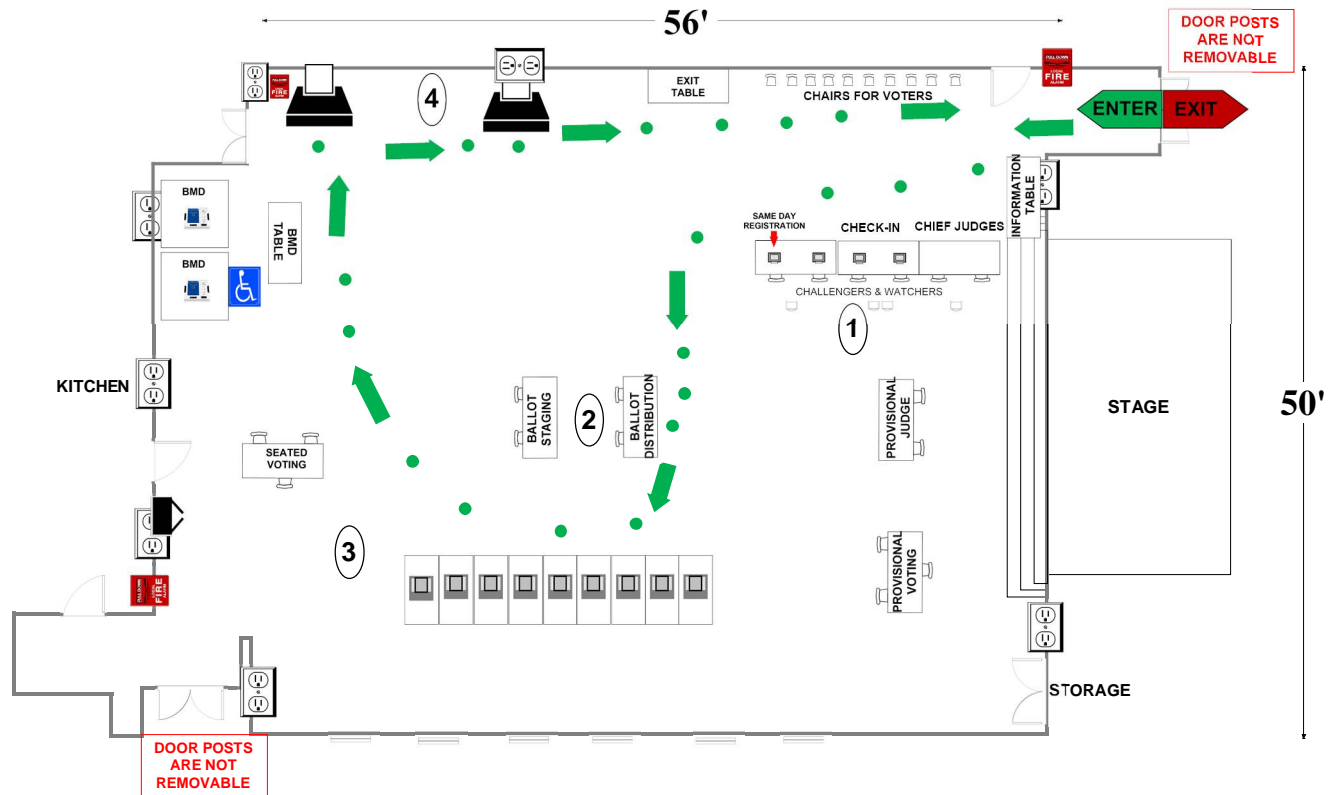
1800 Greenplace Ter

Rockville, MD 20850

RECOMMENDED ROOM LAYOUT

ALL-PURPOSE ROOM

- 9** Voting Booths
- 3** Seated Voting
- 4** Poll Books
- 2** BMDs
- 2** Scanners



- 6'X2 1/2' Table
- Voting Booths with 2 1/2'X5' clearance
- Transfer Cart
- Window
- Ballot Marking Device
- Vending Machine
- Electronic Poll Book
- Scanner
- Scanner Judge stands**
2 - 3 feet from scanner
- 1 Voter Travel
- 2 plug outlet
- Fire alarm

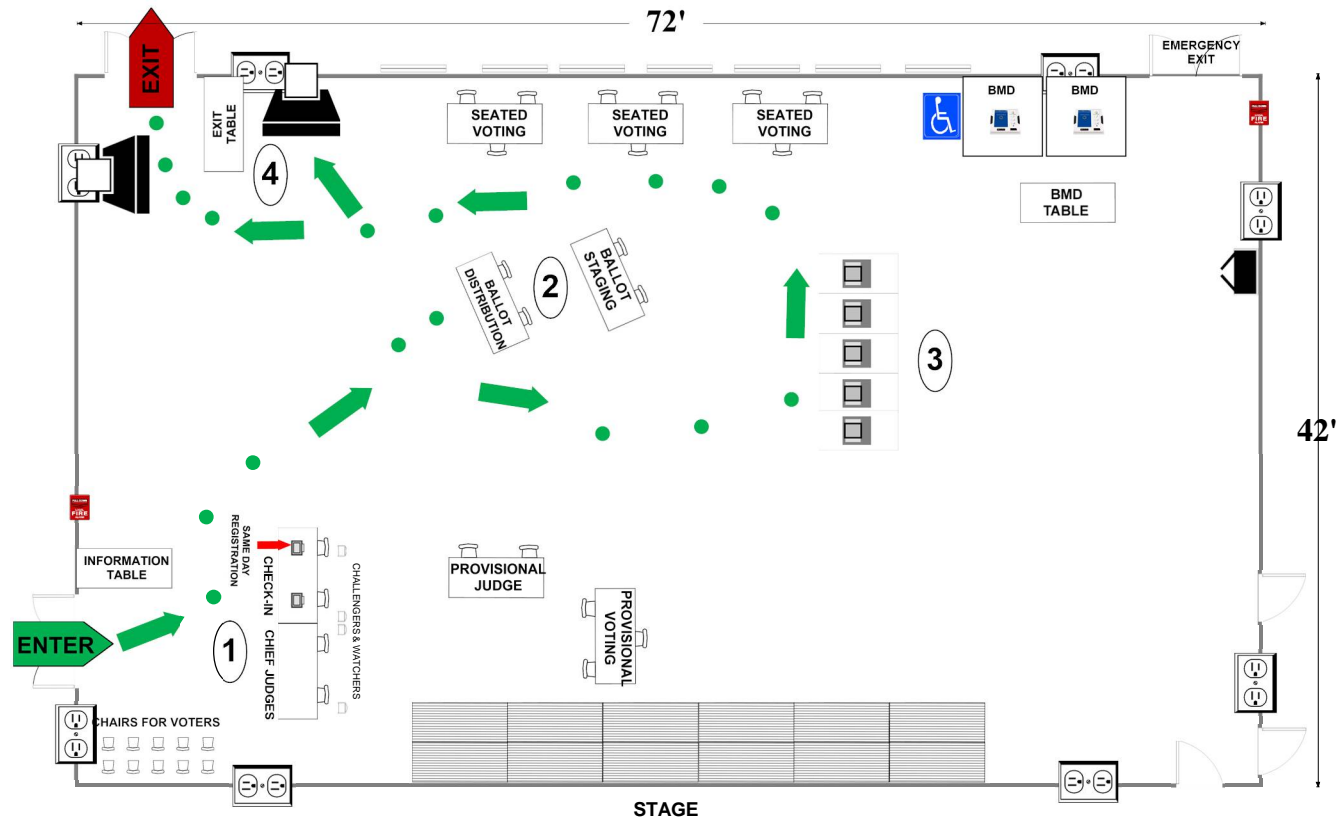
Montgomery County
Board of Elections

8/28/2024

04-23 Cold Spring Elementary School
 9201 Falls Chapel Way
 Potomac, MD 20854
RECOMMENDED ROOM LAYOUT

ALL-PURPOSE ROOM

- 5** Voting Booths
- 9** Seated Voting
- 2** Poll Books
- 2** BMDs
- 2** Scanners



- 6'X2 1/2' Table
- Voting Booths with 2 1/2'X5' clearance
- Transfer Cart
- Window
- Ballot Marking Device
- Vending Machine
- Electronic Poll Book
- Scanner
- Scanner Judge stands**
2 - 3 feet from scanner
- 1 Voter Travel
- 2 plug outlet
- Fire alarm

Montgomery County
 Board of Elections
 8/28/2024

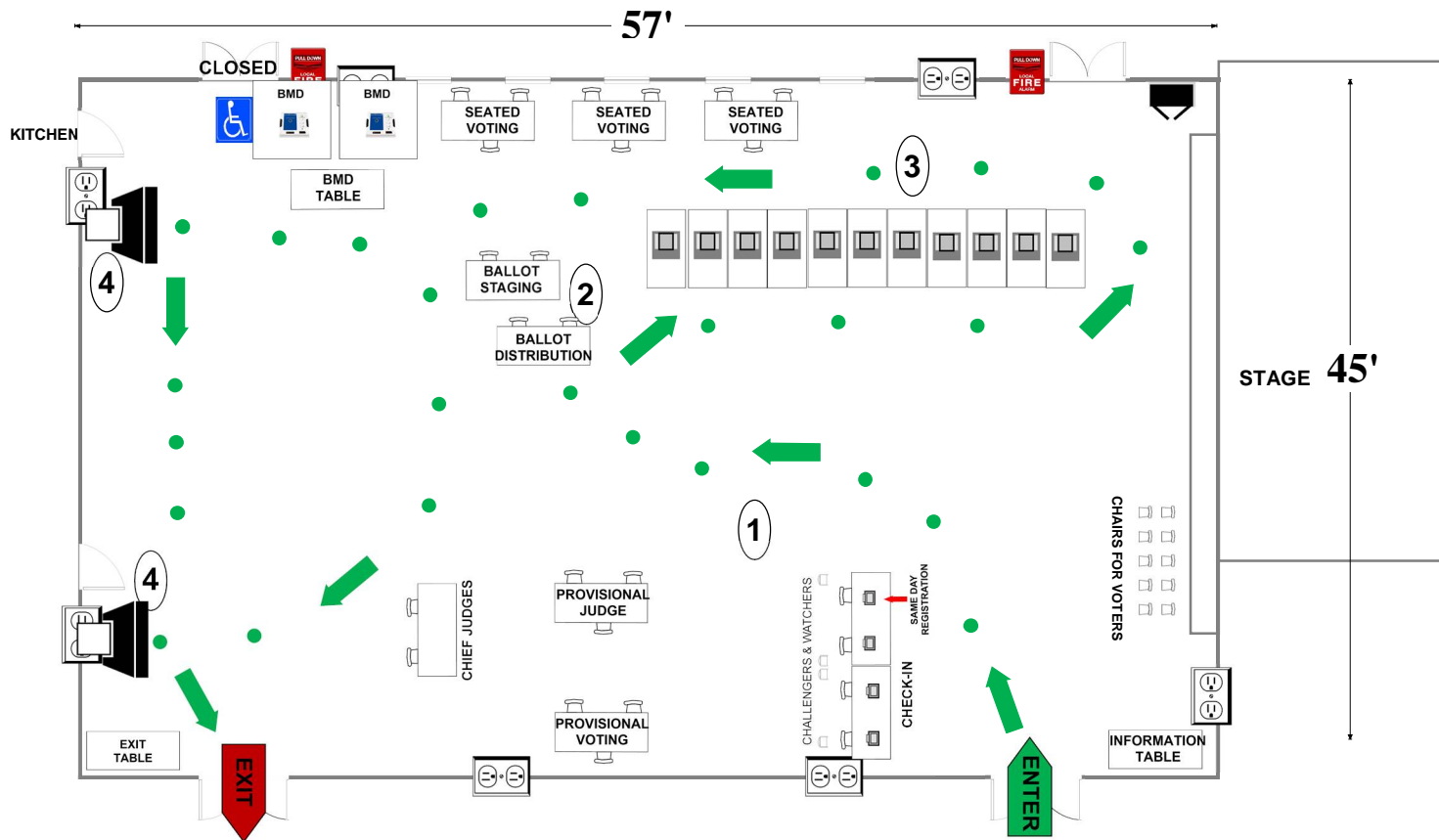
04-24 Lakewood Elementary School

2534 Lindley Ter
Rockville, MD 20850

ALL-PURPOSE ROOM

RECOMMENDED ROOM LAYOUT

- 11** Voting Booths
- 9** Seated Voting
- 4** Poll Books
- 2** BMDs
- 2** Scanners



- 6'X2 1/2' Table
- Voting Booths with 2 1/2'X5' clearance
- Transfer Cart
- Window
- Ballot Marking Device
- Vending Machine
- Electronic Poll Book
- Scanner
- Scanner Judge stands
2 - 3 feet from scanner
- 1 Voter Travel
- 2 plug outlet
- Fire alarm

Montgomery County
Board of Elections

8/28/2024

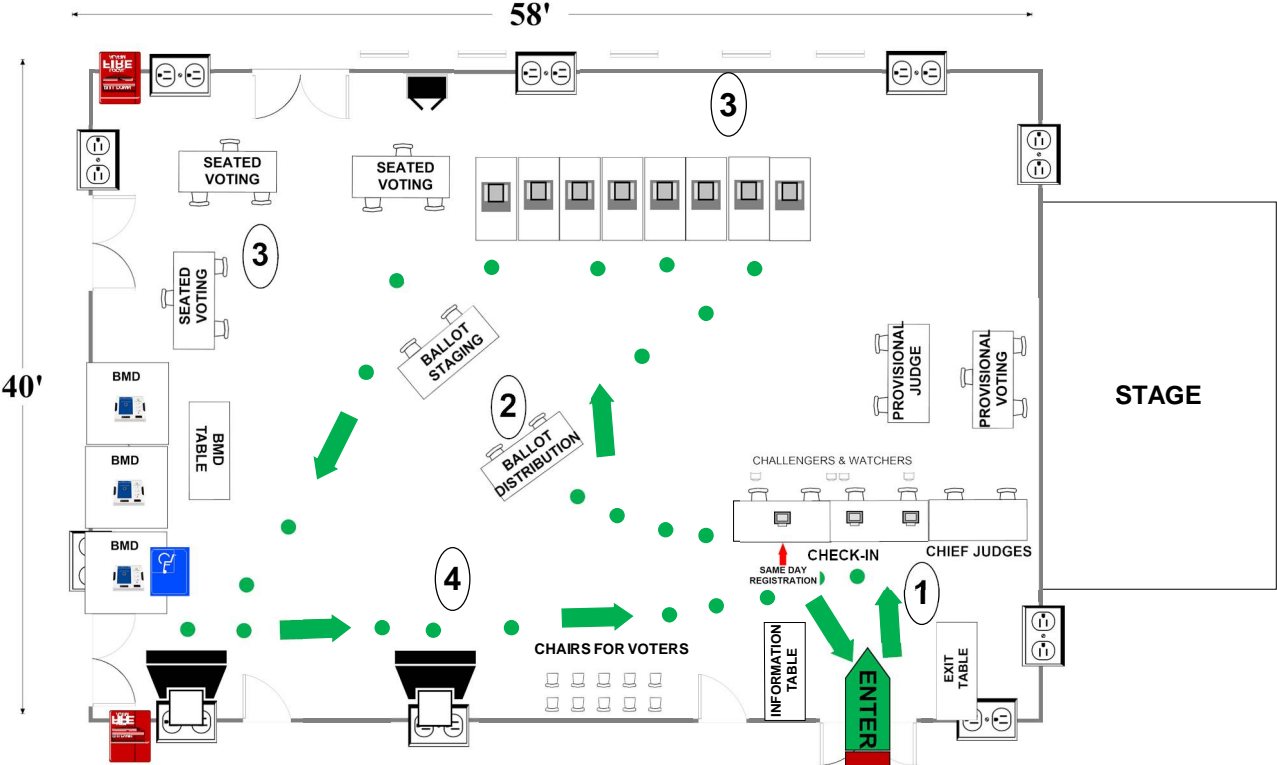
04-25/04-11 Ritchie Park Elementary School

1514 Dunster Rd
Rockville, MD 20854

RECOMMENDED ROOM LAYOUT

ALL-PURPOSE ROOM

- 8** Voting Booths
- 9** Seated Voting
- 3** Poll Books
- 3** BMDs
- 2** Scanners



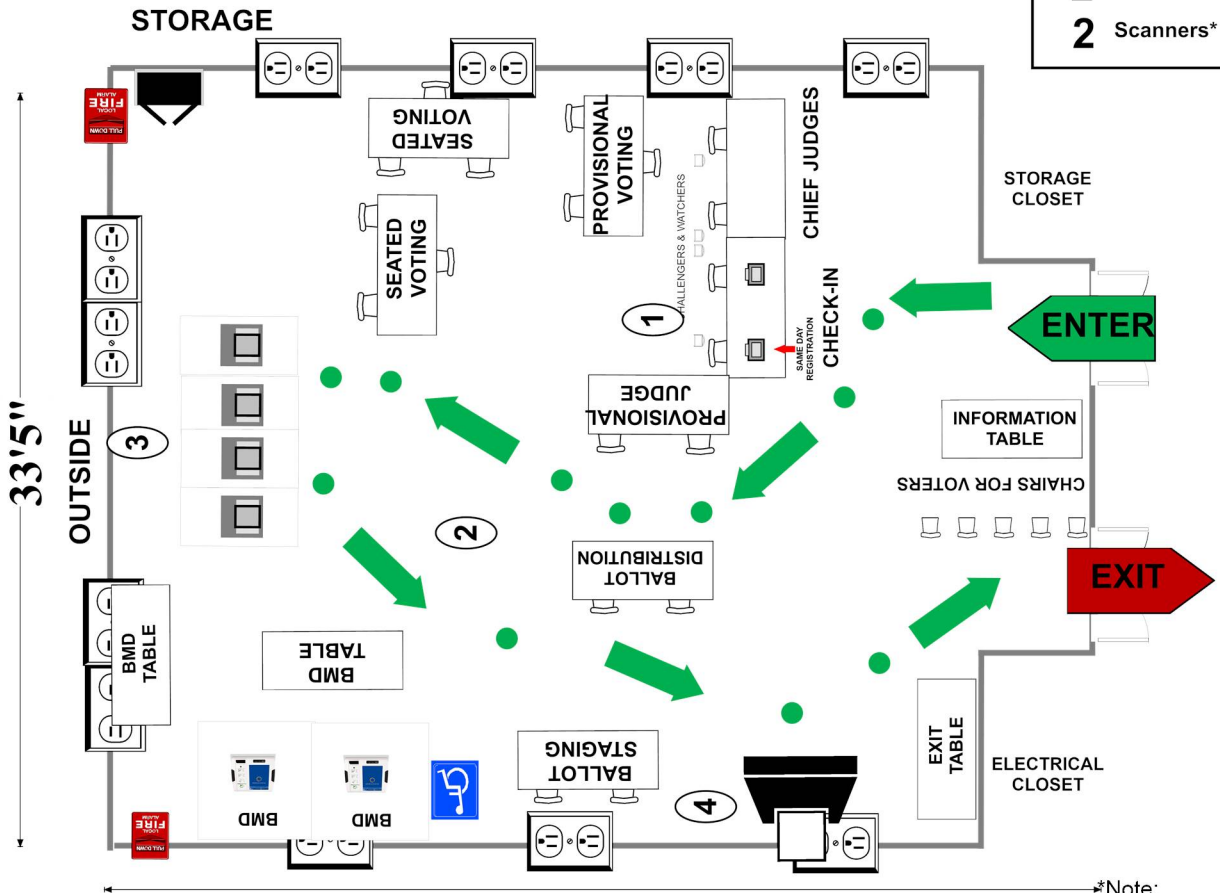
- 6'X2 1/2' Table
- Voting Booths with 2 1/2'X5' clearance
- Transfer Cart
- Window
- Ballot Marking Device
- Vending Machine
- Electronic Poll Book
- Scanner
- Scanner Judge stands**
2 - 3 feet from scanner
- 1 Voter Travel
- 2 plug outlet
- Fire alarm

Montgomery County
Board of Elections
8/19/2024

04-28 Jewish Community Center
 6125 Montrose Rd.
 Rockville, MD 20852
RECOMMENDED ROOM LAYOUT

GALLERY

- 4** Voting Booths
- 6** Seated Voting
- 2** Poll Books
- 2** BMDs
- 2** Scanners*



*Note:

- 6'X2 1/2' Table
- Voting Booths with 2 1/2'X5' clearance
- Transfer Cart
- Window
- Ballot Marking Device
- Vending Machine
- Electronic Poll Book
- Scanner
- Scanner Judge stands 2 - 3 feet from scanner
- 1 Voter Travel
- 2 plug outlet
- Fire alarm

KITCHEN
 Montgomery County
 Board of Elections

10/10/2024

Space in the room does not allow for two scanners. For emergencies one scanner is stored on site. The scanner needs to be opened and closed at the end of the night if it is not used.

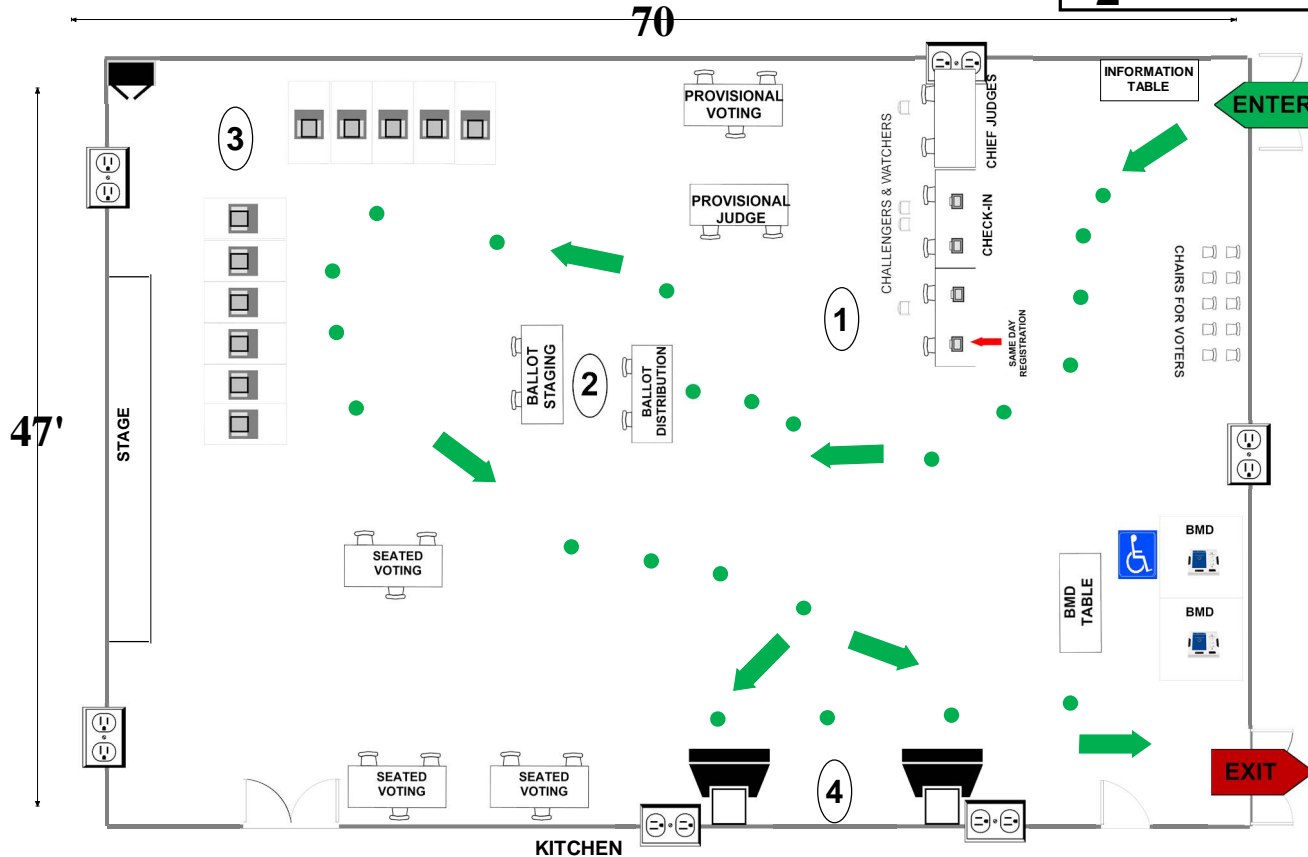
04-30 St. Elizabeth Catholic School

917 Montrose Rd
Rockville, MD 20852

CAFETERIA

RECOMMENDED ROOM LAYOUT

- | | |
|-----------|---------------|
| 11 | Voting Booths |
| 9 | Seated Voting |
| 4 | Poll Books |
| 2 | BMDs |
| 2 | Scanners |



- | | | | | | |
|--|--|--|-----------------------|--|---------------|
| | 6'X2 1/2' Table | | Ballot Marking Device | | Voter Travel |
| | Voting Booths with 2 1/2'X5' clearance | | Vending Machine | | 2 plug outlet |
| | Scanner | | Electronic Poll Book | | Fire alarm |
| | Window | | Black Transfer Cart | | |

Montgomery County
Board of Elections
8/28/2024

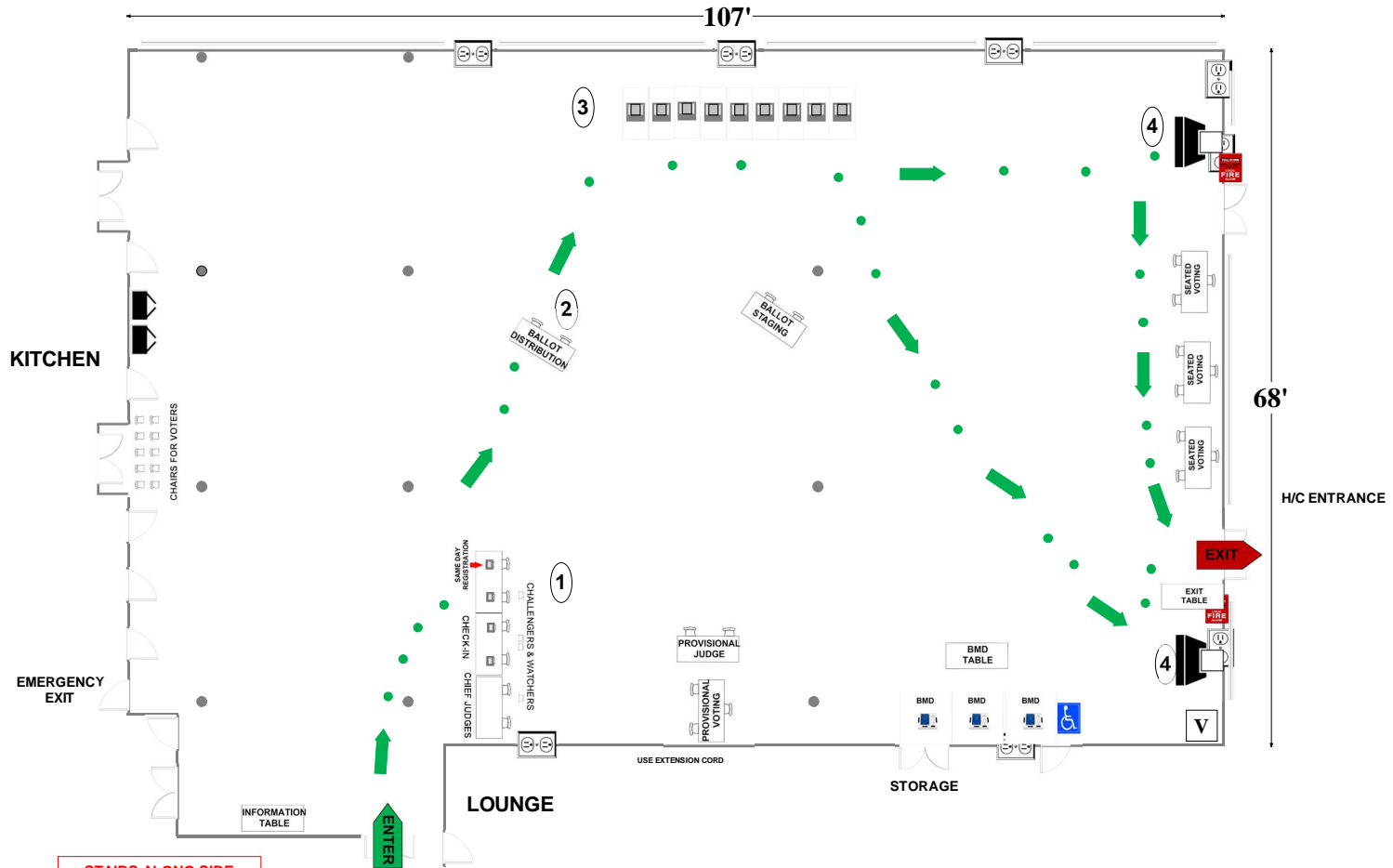
04-31 Walter Johnson High School

6400 Rock Spring Dr
Bethesda, MD 20814

RECOMMENDED ROOM LAYOUT

CAFETERIA

- 9** Voting Booths
- 9** Seated Voting
- 4** Poll Books
- 3** BMDs
- 2** Scanners



**STAIRS ALONG SIDE
HANDICAP ACCESS RAMP**

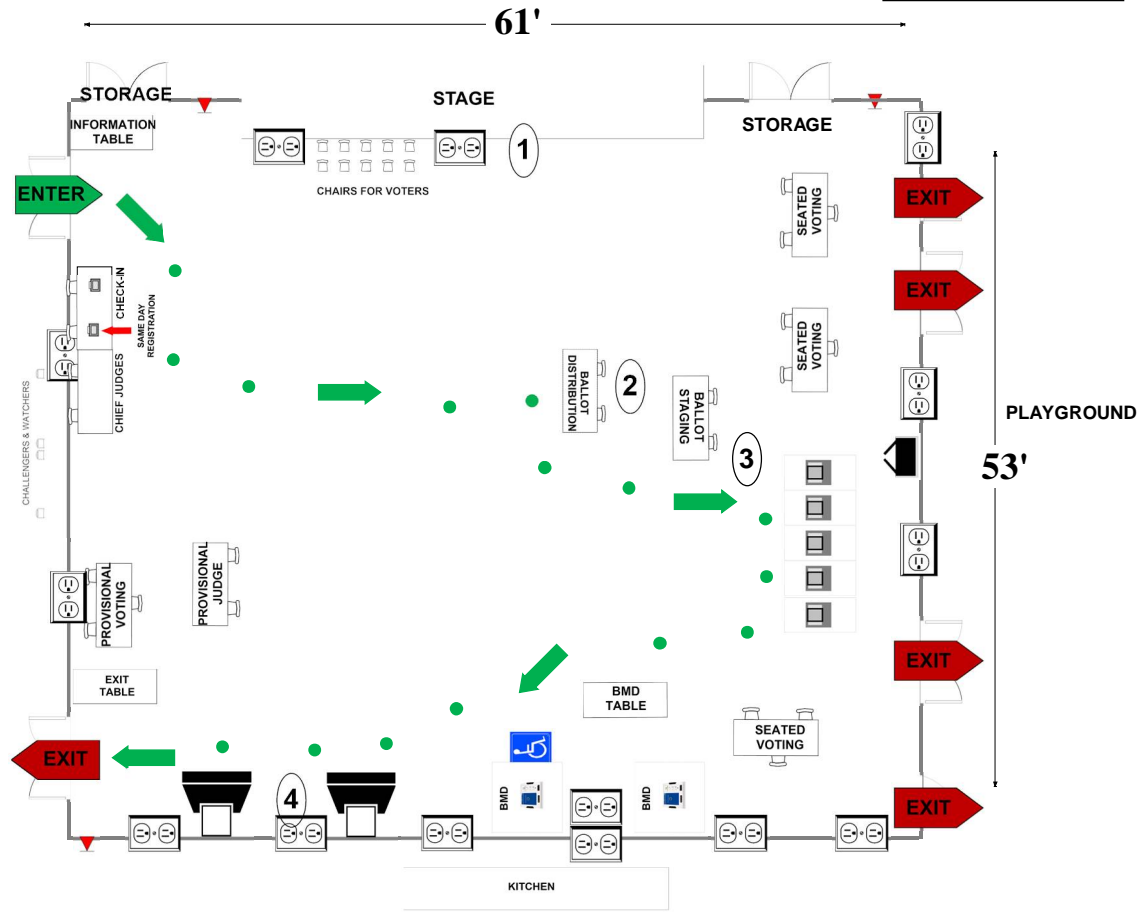
- | | | | | | |
|--|--|--|---|--|---------------|
| | 6'x2 1/2' Table | | Ballot Marking Device | | Voter Travel |
| | Voting Booths with 2 1/2'x5' clearance | | Vending Machine | | 2 plug outlet |
| | Transfer Cart | | Electronic Poll Book | | Fire alarm |
| | Window | | Scanner | | Column |
| | Bookcase | | Scanner Judge stands
2 - 3 feet from scanner | | |

Montgomery County
Board of Elections
8/28/2024

04-32 Beverly Farms ES
8501 Postoak Rd
Potomac, MD 20854
RECOMMENDED ROOM LAYOUT

ALL-PURPOSE ROOM

- 5** Voting Booths
- 9** Seated Voting
- 2** Poll Books
- 2** BMDs
- 2** Scanners



- 6'X2 1/2' Table
- Voting Booths with 2 1/2'X5' clearance
- Scanner
- Window
- BMD Ballot Marking Device
- Vending Machine
- Electronic Poll Book
- Black Transfer Cart
- 1 Voter Travel
- 2 plug outlet
- Fire alarm
- Land line jack

Montgomery County
 Board of Elections
 8/28/2024