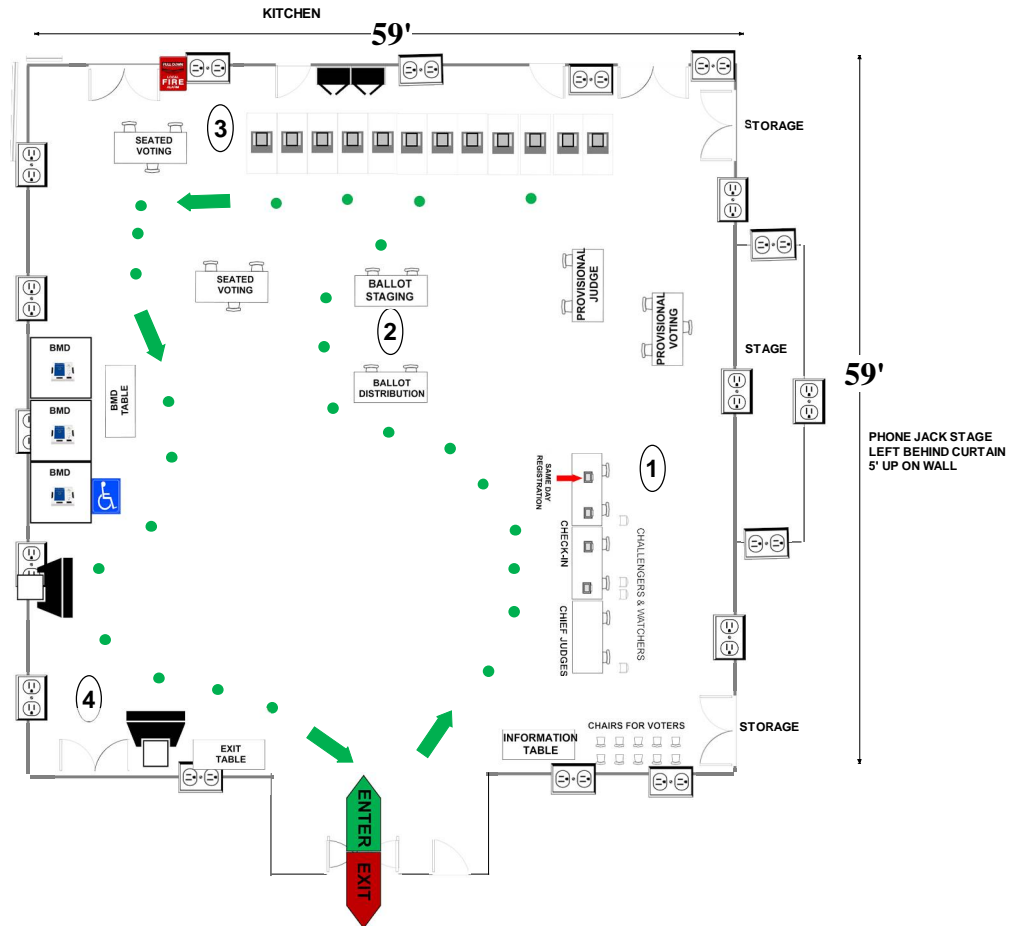


05-01 Dr. Charles Drew Elementary School
 1200 Swingingdale Dr
 Silver Spring MD 20905

ALL-PURPOSE ROOM

RECOMMENDED ROOM LAYOUT

- 12** Voting Booths
- 6** Seated Voting
- 4** Poll Books
- 3** BMDs
- 2** Scanners



PHONE JACK STAGE LEFT BEHIND CURTAIN 5' UP ON WALL

- 6'x2 1/2' Table
- Voting Booths with 2 1/2'x5' clearance
- Transfer Cart
- Window
- Ballot Marking Device
- Vending Machine
- Electronic Poll Book
- Scanner
- Scanner Judge stands**
2 - 3 feet from scanner
- Voter Travel
- 2 plug outlet
- Fire alarm

Montgomery County
 Board of Elections
 3/14/2024

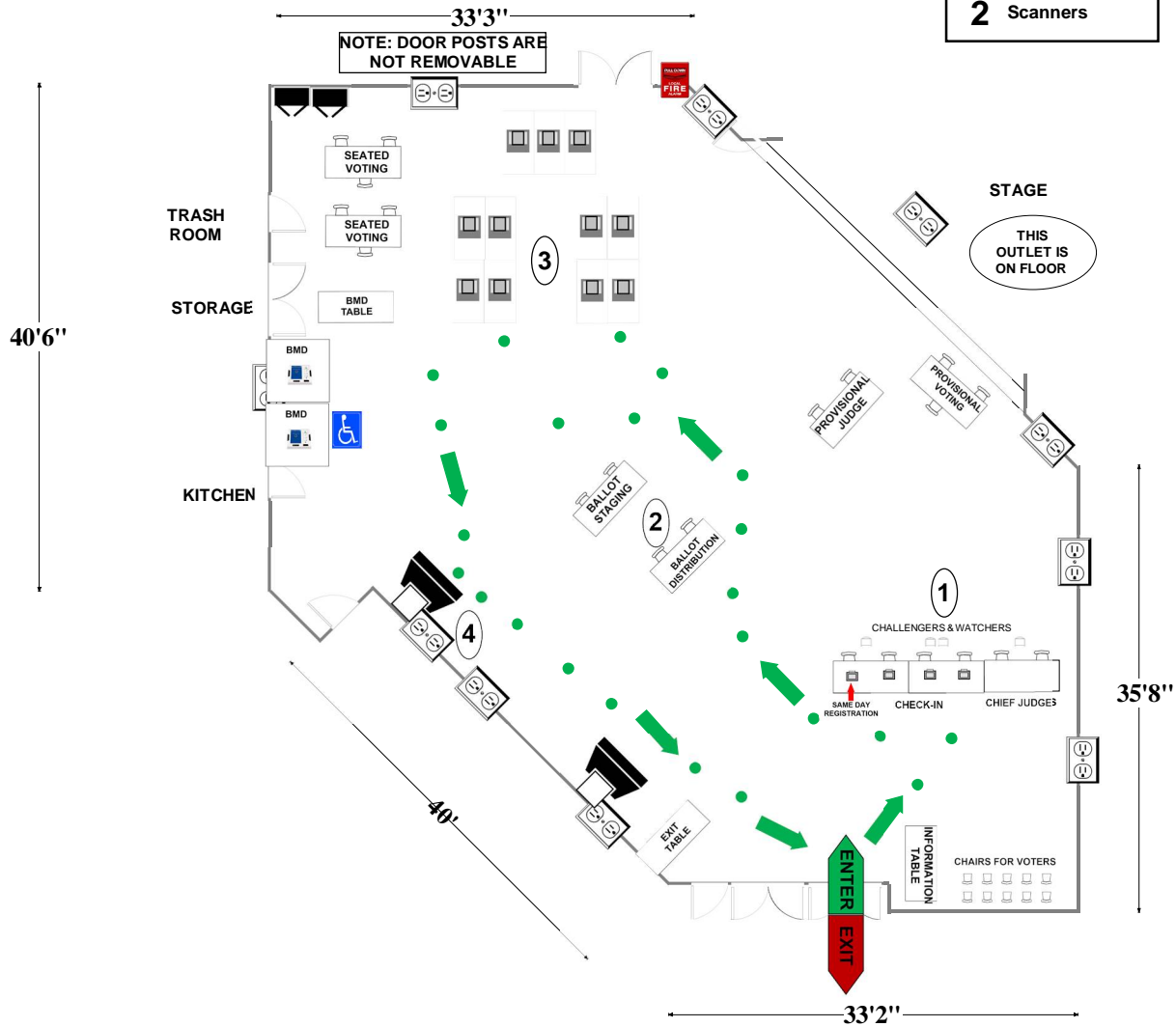
05-02 Greencastle Elementary School

13611 Robey Rd
Silver Spring, MD 20904

RECOMMENDED ROOM LAYOUT

ALL-PURPOSE ROOM

- 11** Voting Booths
- 6** Seated Voting
- 4** Poll Books
- 2** BMDs
- 2** Scanners



- 6'x2 1/2' Table
- Voting Booths with 2 1/2'x5' clearance
- Transfer Cart
- Window
- Ballot Marking Device
- Vending Machine
- Electronic Poll Book
- Scanner
- Scanner Judge stands**
2 - 3 feet from scanner
- 1 Voter Travel
- 2 plug outlet
- Fire alarm

Montgomery County
Board of Elections
10/11/2024

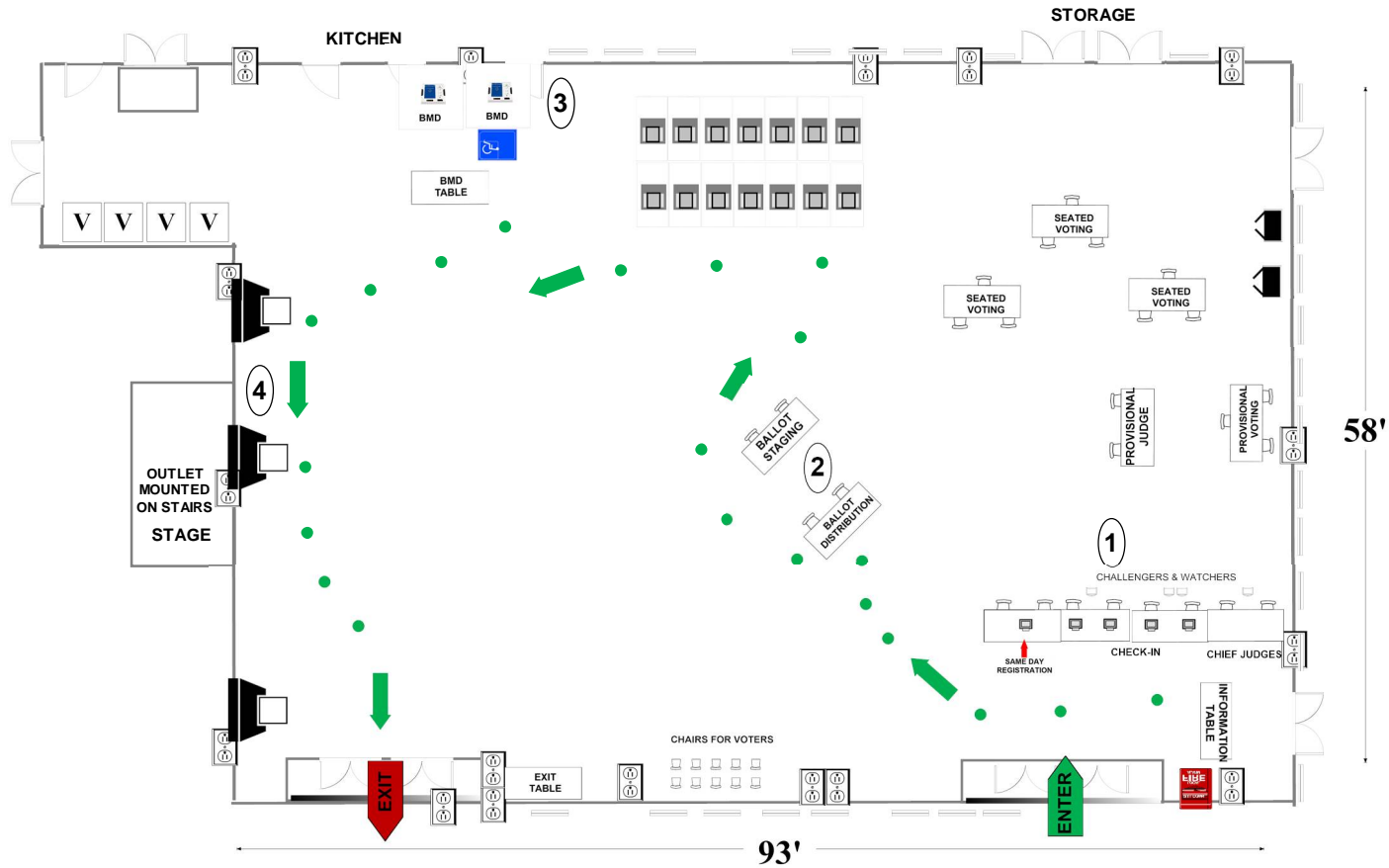
05-03 Francis Scott Key Middle School

910 Schindler Drive
Silver Spring, MD 20903

RECOMMENDED ROOM LAYOUT

CAFETERIA

- | | |
|-----------|---------------|
| 14 | Voting Booths |
| 9 | Seated Voting |
| 5 | Poll Books |
| 2 | BMDs |
| 3 | Scanners |



- | | | | | | |
|--|-------------------------------------|--|-----------------------|--|----------------|
| | 6'X2½' Table | | Ballot Marking Device | | 1 Voter Travel |
| | Voting Booths with 2½'X5' clearance | | Vending Machine | | 2 plug outlet |
| | Transfer Cart | | Electronic Poll Book | | Fire alarm |
| | Window | | Scanner | | |
- Scanner Judge stands**
2 - 3 feet from scanner

Montgomery County
Board of Elections
8/30/2024

05-04 Riderwood Village Performance Hall

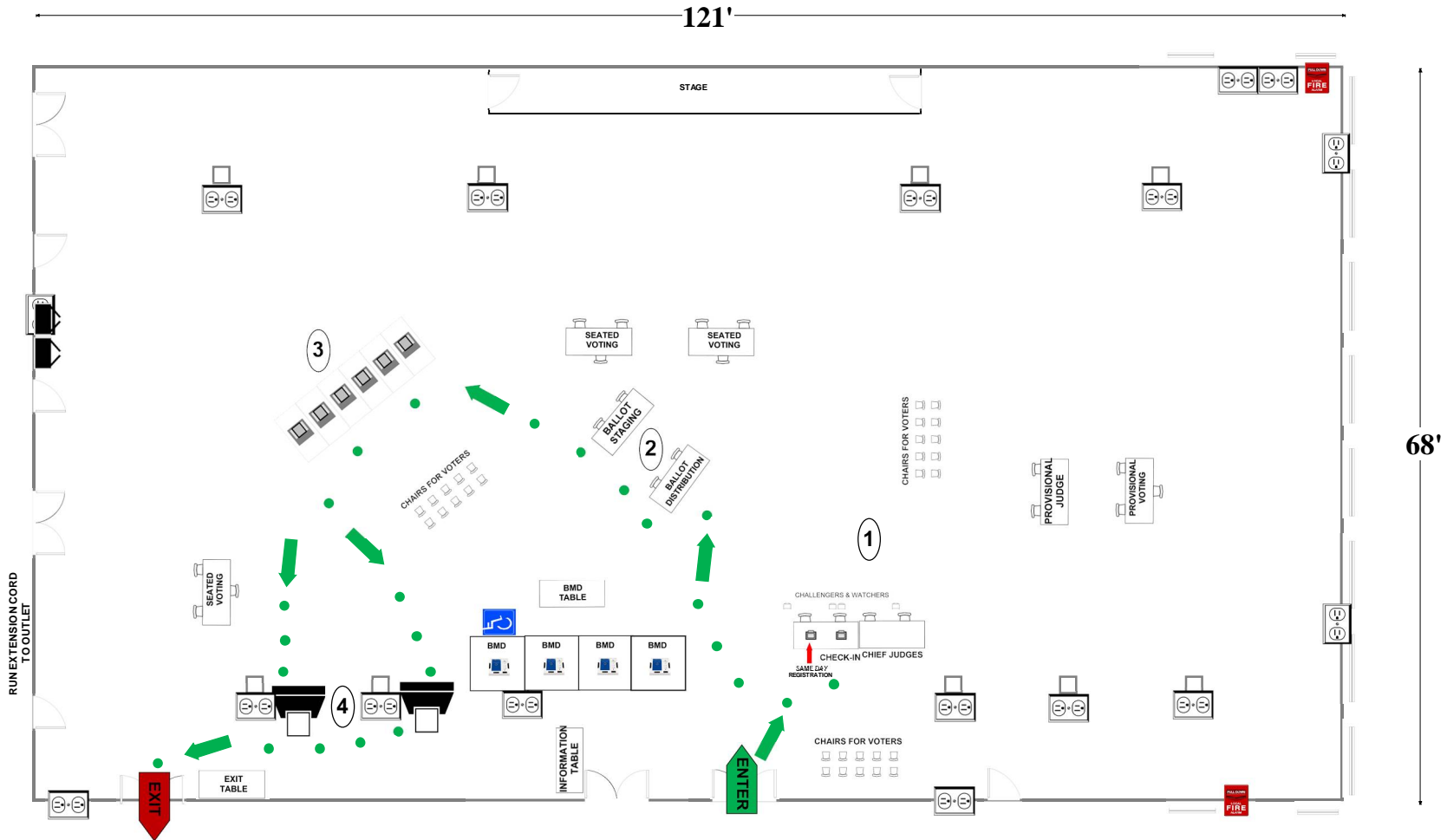
3120 Gracefield Rd

Silver Spring, MD 20904

RECOMMENDED ROOM LAYOUT

PERFORMANCE HALL

- 6** Voting Booths
- 9** Seated Voting
- 2** Poll Books
- 4** BMDs
- 2** Scanners



- 6'X2½' Table
- Voting Booths with 2½'X5' clearance
- Transfer Cart
- Window
- Ballot Marking Device
- Vending Machine
- Electronic Poll Book
- Scanner
- Scanner Judge stands
2 - 3 feet from scanner
- 1 Voter Travel
- 2 plug outlet
- Fire alarm

Montgomery County
Board of Elections
8/30/2024

05-05 Burnt Mills Elementary School

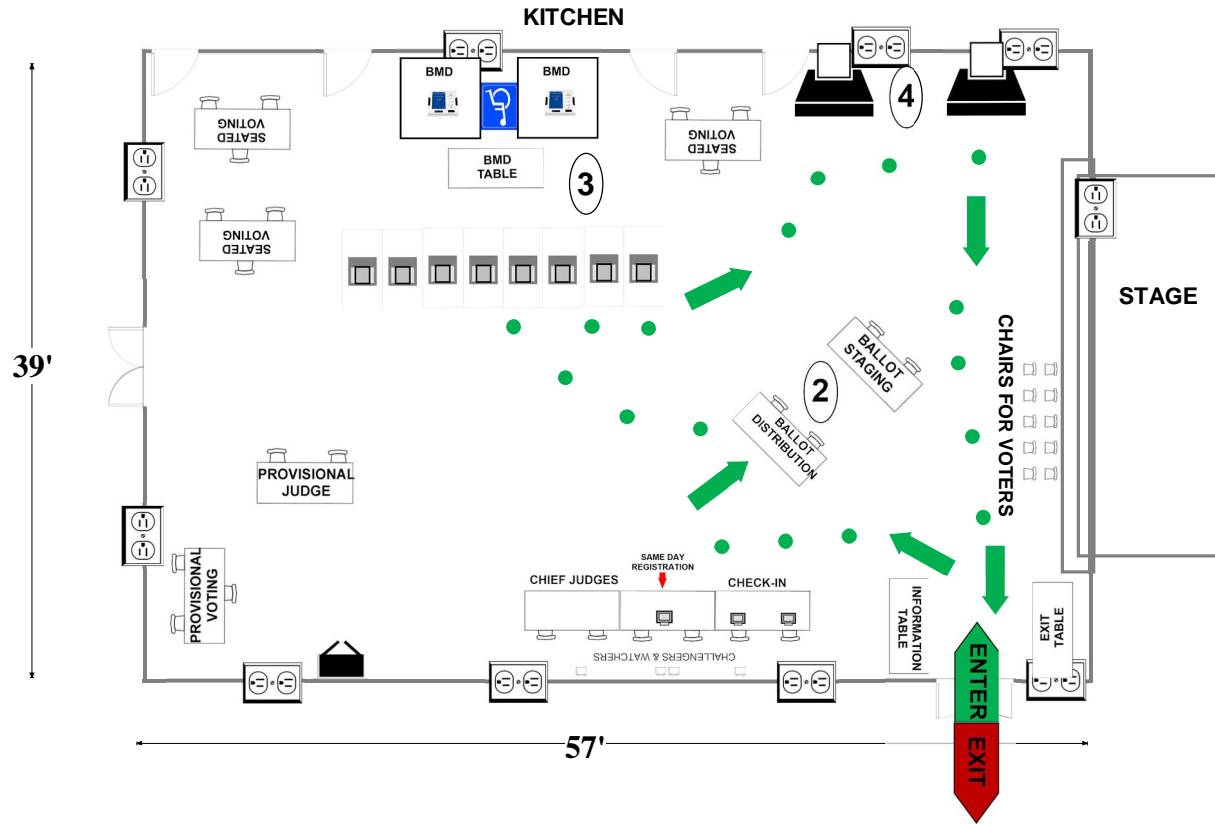
11211 Childs St

Silver Spring, MD 20901

RECOMMENDED ROOM LAYOUT

ALL PURPOSE ROOM

- 8** Voting Booths
- 9** Seated Voting
- 3** Poll Books
- 2** BMDs
- 2** Scanners



- | | | | | | |
|--|--|--------------------------------|-----------------------|--|---------------|
| | 6'X2 1/2' Table | | Ballot Marking Device | | Voter Travel |
| | Voting Booths with 2 1/2' X 5' clearance | | Vending Machine | | 2 plug outlet |
| | Transfer Cart | | Electronic Poll Book | | Fire alarm |
| | Window | | Scanner | | |
| | | Scanner Judge stands | | | |
| | | 2 - 3 feet from scanner | | | |

Montgomery County
Board of Elections

10/11/2024

05-06 White Oak Middle School

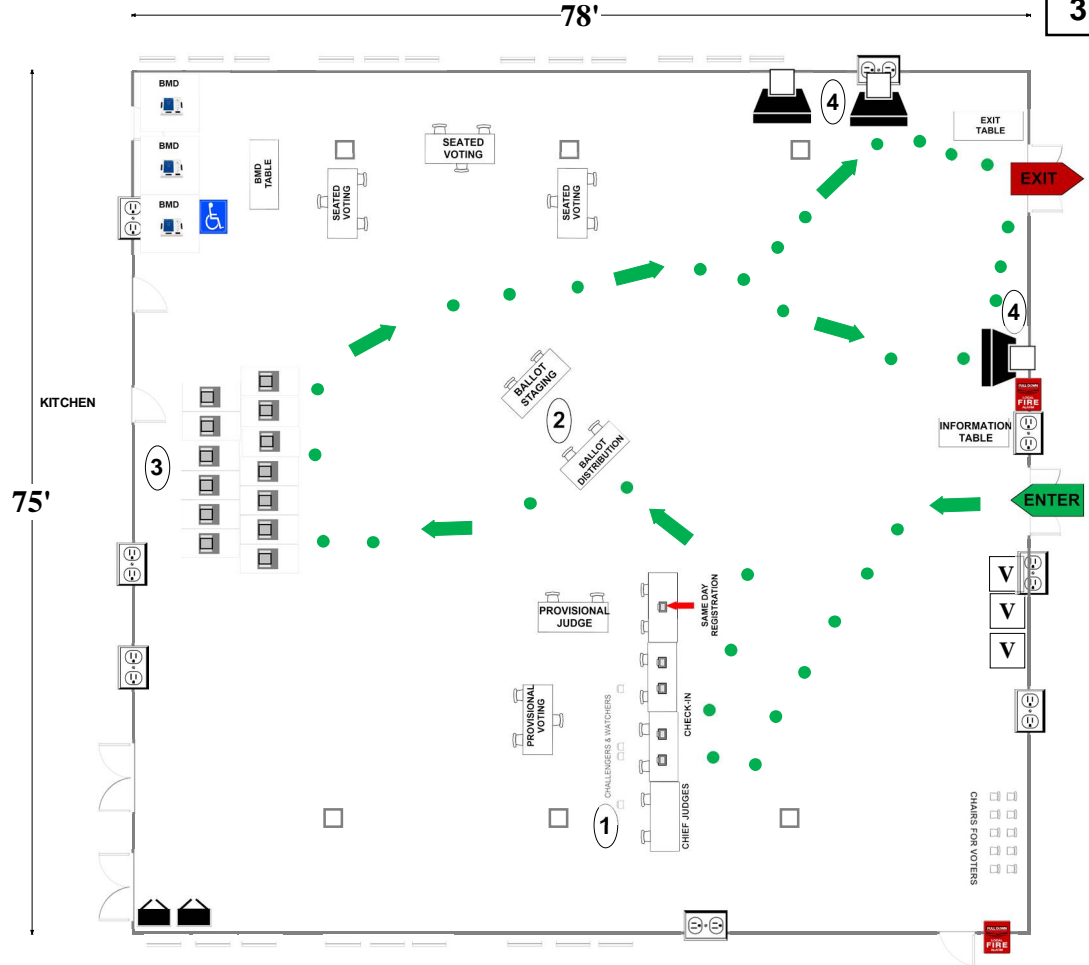
12201 New Hampshire Ave.

Silver Spring, MD 20904

RECOMMENDED ROOM LAYOUT

CAFETERIA

- 13** Voting Booths
- 9** Seated Voting
- 5** Poll Books
- 3** BMDs
- 3** Scanners



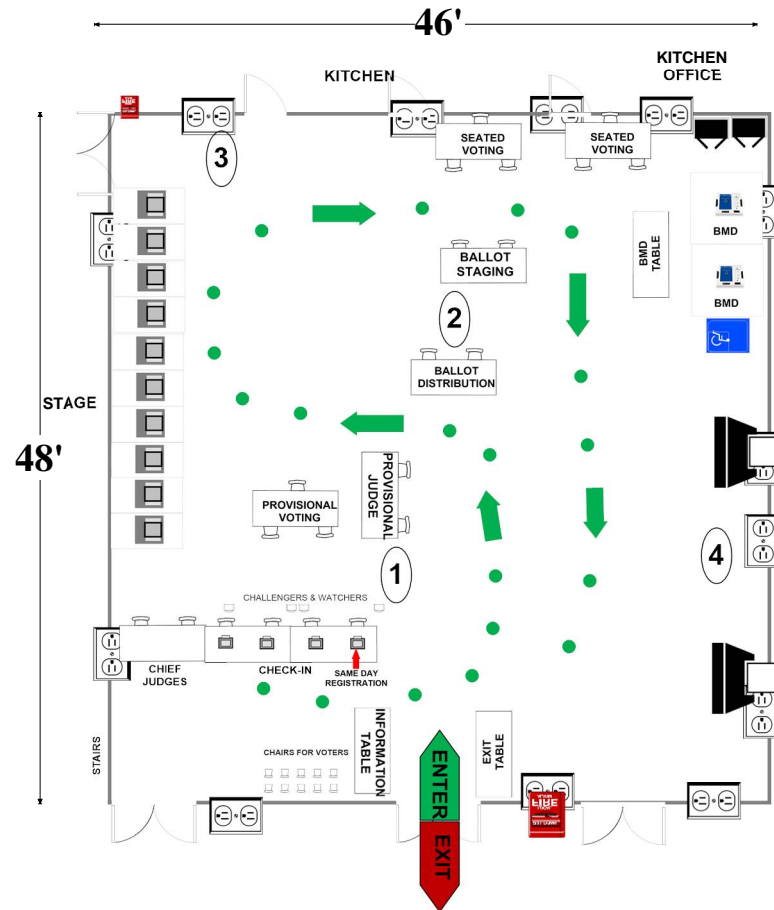
- 6'X2½' Table
- Voting Booths with 2½'X5' clearance
- Scanner
- Window
- Column
- BMD Ballot Marking Device
- Vending Machine
- Electronic Poll Book
- Black Transfer Cart
- 1 Voter Travel
- 2 plug outlet
- Fire alarm

Montgomery County
Board of Elections
8/30/2024

05-08 William Tyler Page Elementary School
 13400 Tamarack Rd
 Silver Spring, MD 20904
RECOMMENDED ROOM LAYOUT

ALL-PURPOSE ROOM

- | | |
|-----------|---------------|
| 10 | Voting Booths |
| 6 | Seated Voting |
| 4 | Poll Books |
| 2 | BMDs |
| 2 | Scanners |



- | | | | | | |
|--|--|--|-----------------------|--|----------------|
| | 6'X2 1/2' Table | | Ballot Marking Device | | 1 Voter Travel |
| | Voting Booths with 2 1/2'X5' clearance | | Vending Machine | | 2 plug outlet |
| | Transfer Cart | | Electronic Poll Book | | Scanner |
| | Window | | Fire alarm | | |
- Scanner Judge stands**
 2 - 3 feet from scanner

Montgomery County
 Board of Elections
 8/30/2024

05-09 Westover Elementary School

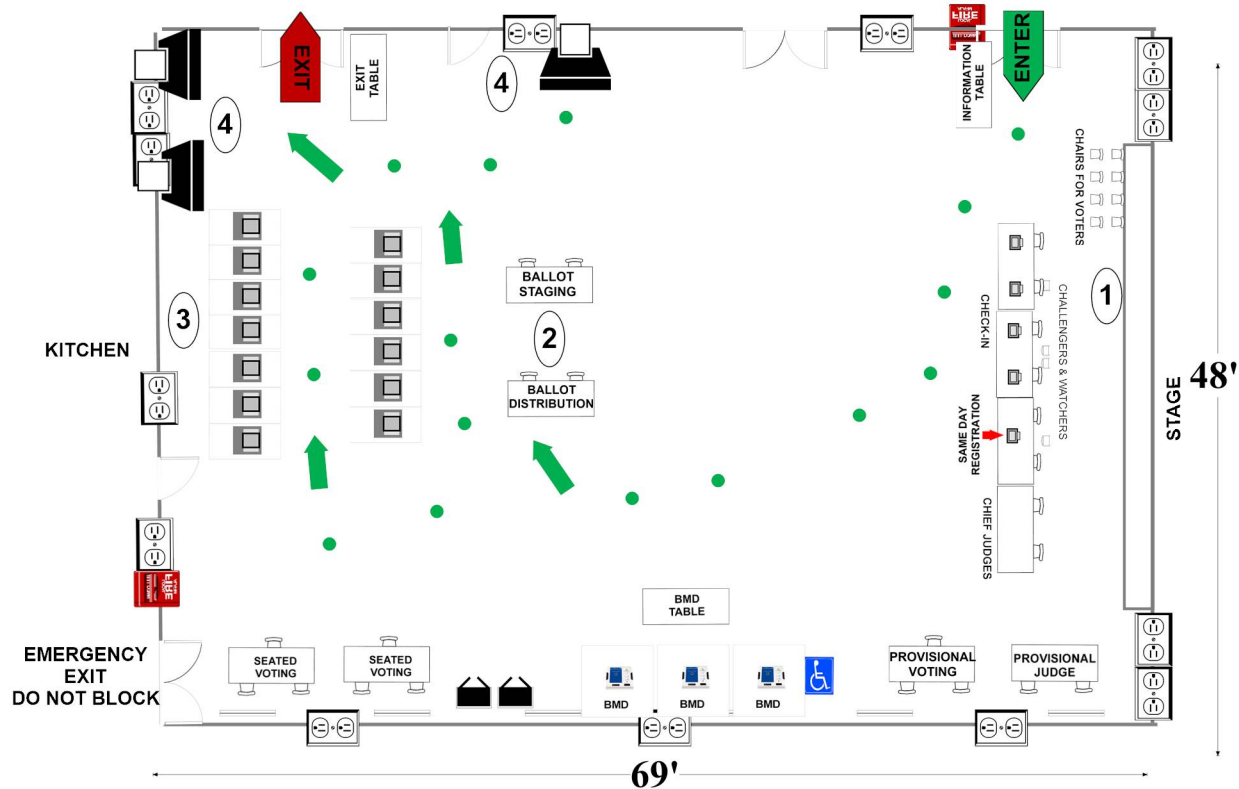
401 Hawkesbury Ln

Silver Spring, MD 20904

RECOMMENDED ROOM LAYOUT

ALL-PURPOSE ROOM

- | | |
|----|---------------|
| 13 | Voting Booths |
| 6 | Seated Voting |
| 5 | Poll Books |
| 3 | BMDs |
| 3 | Scanners |



- | | | | | | |
|--|--|--|-----------------------|--|----------------|
| | 6'X2 1/2' Table | | Ballot Marking Device | | 1 Voter Travel |
| | Voting Booths with 2 1/2'X5' clearance | | Vending Machine | | 2 plug outlet |
| | Transfer Cart | | Electronic Poll Book | | Scanner |
| | Window | | Scanner Judge stands | | Fire alarm |
- 2 - 3 feet from scanner

Montgomery County
Board of Elections

10/11/2024

05-10 Cresthaven Elementary School

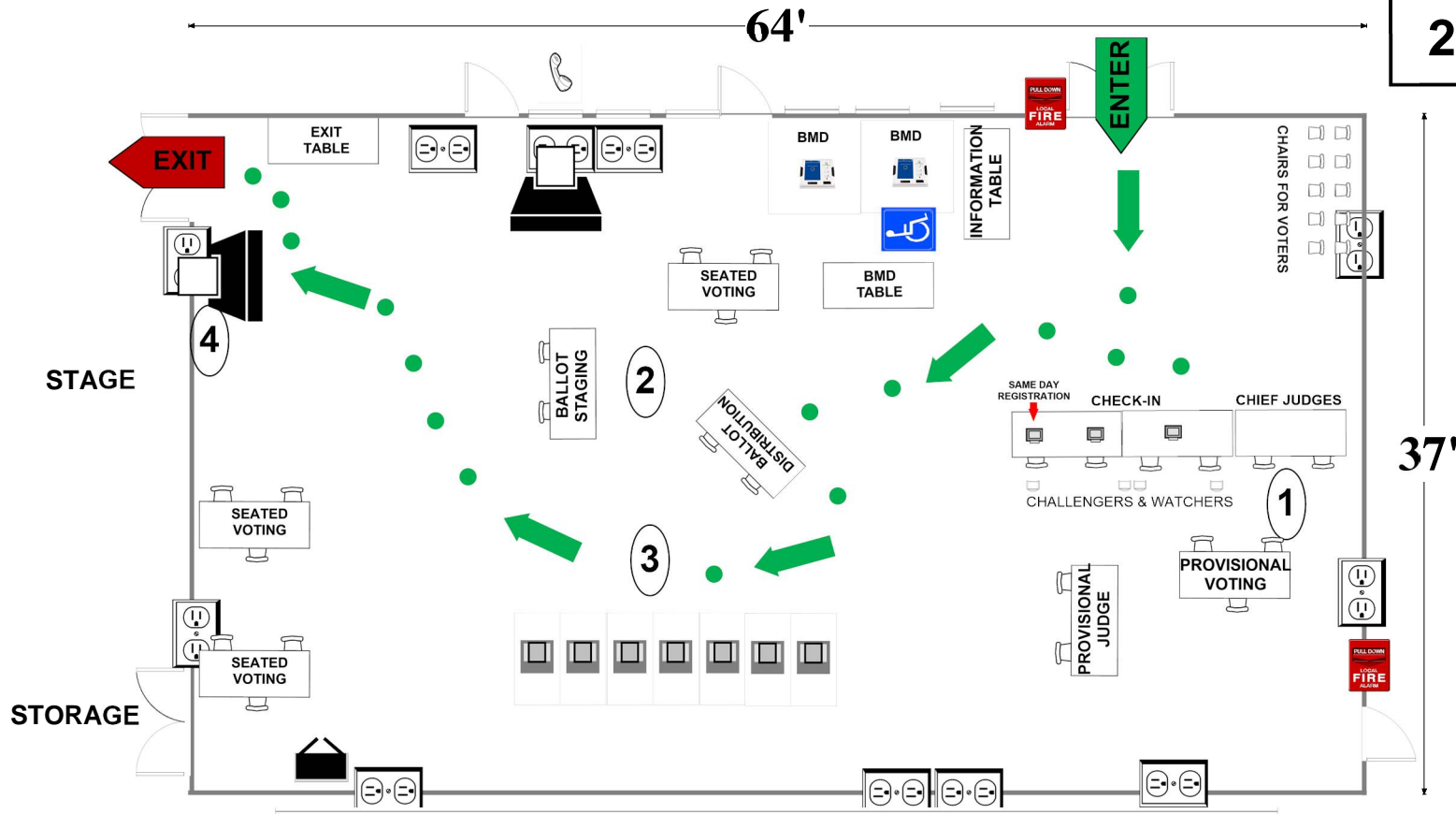
1234 Cresthaven Dr

Silver Spring, MD 20903

RECOMMENDED ROOM LAYOUT

ALL-PURPOSE ROOM

- 7** Voting Booths
- 9** Seated Voting
- 3** Poll Books
- 2** BMDs
- 2** Scanners



- 6'X2½' Table
- Voting Booths with 2½'X5' clearance
- Scanner
- Window
- BMD
- Ballot Marking Device
- Vending Machine
- Electronic Poll Book
- Black Transfer Cart
- 1 Voter Travel
- 2 plug outlet
- Fire alarm

Montgomery County
Board of Elections

8/30/2024

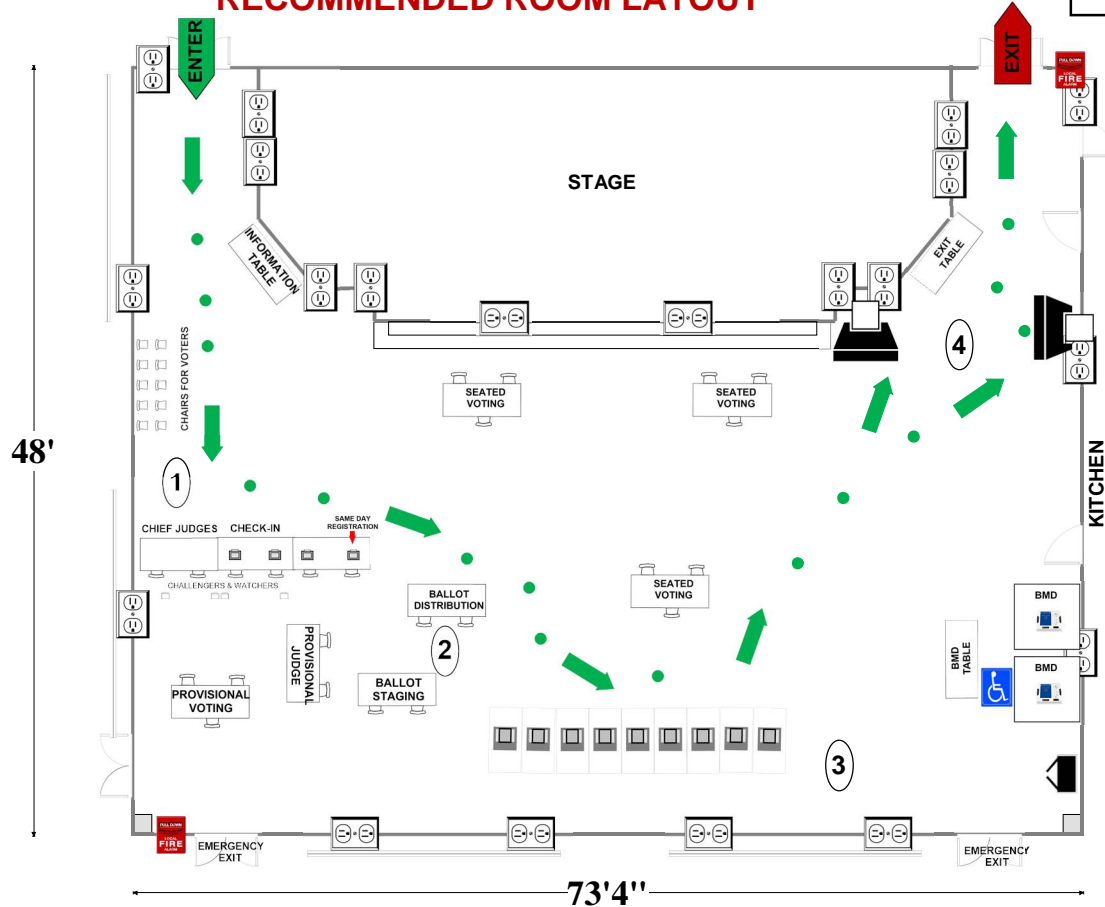
05-11 Cannon Road Elementary School

901 Cannon Rd
Silver Spring, MD 20904

ALL-PURPOSE ROOM

RECOMMENDED ROOM LAYOUT

- 9** Voting Booths
- 9** Seated Voting
- 4** Poll Books
- 2** BMDs
- 2** Scanners



- 6'x2 1/2' Table
- Voting Booths with 2 1/2'x5' clearance
- Transfer Cart
- Window
- Ballot Marking Device
- Vending Machine
- Electronic Poll Book
- Scanner
- Scanner Judge stands**
2 - 3 feet from scanner
- Voter Travel
- 2 plug outlet
- Fire alarm

Montgomery County
Board of Elections

8/30/2024

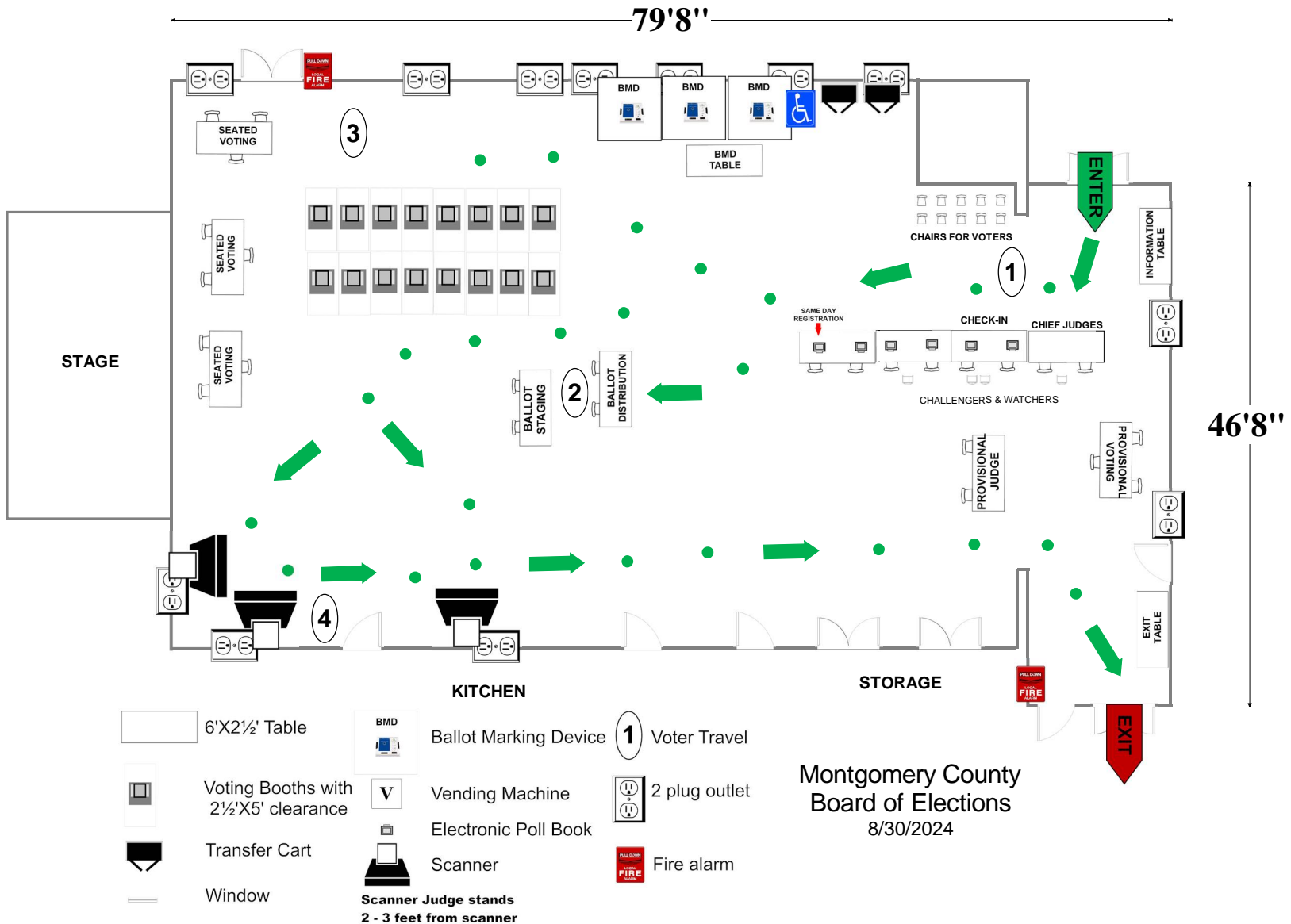
05-12 Galway Elementary School

12612 Galway Dr
Silver Spring, MD 20904

ALL-PURPOSE ROOM

RECOMMENDED ROOM LAYOUT

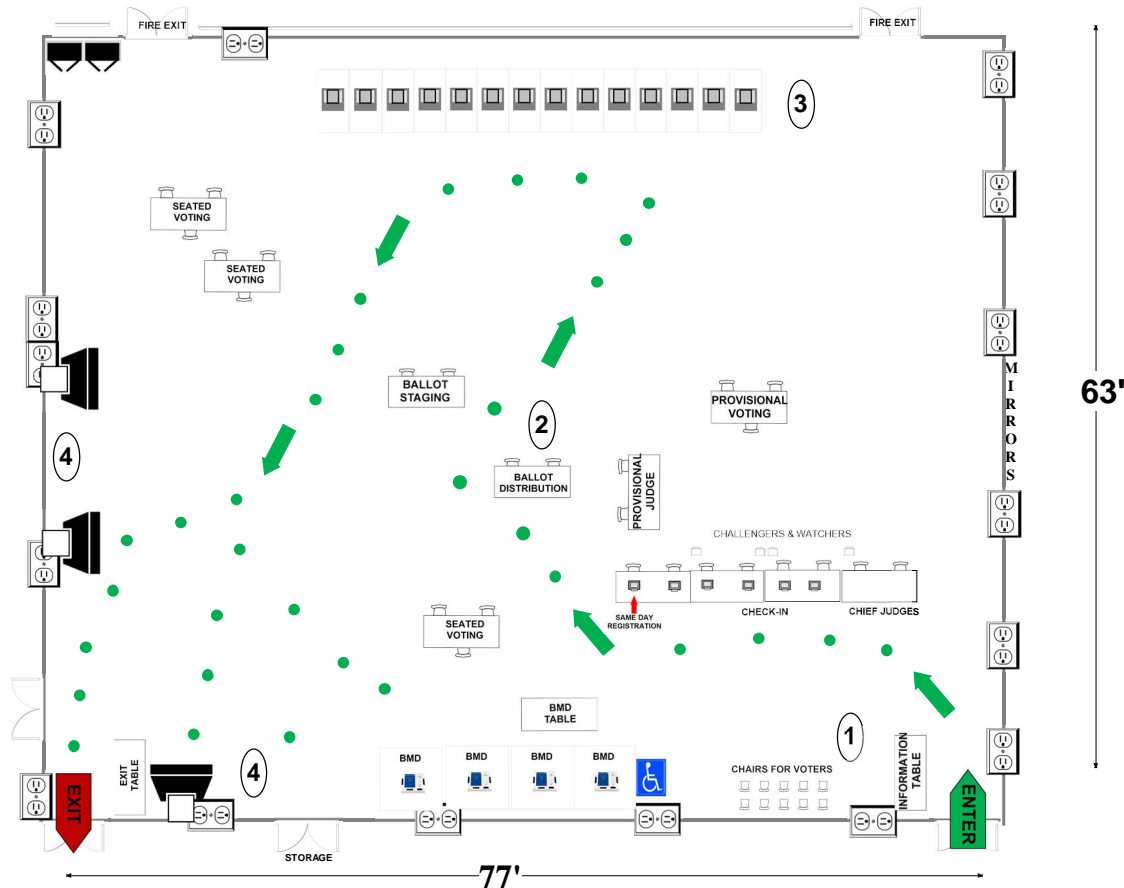
- | | |
|-----------|---------------|
| 16 | Voting Booths |
| 9 | Seated Voting |
| 6 | Poll Books |
| 3 | BMDs |
| 3 | Scanners |



**05-13 White Oak Community
Recreation Center**
1700 April Lane
Silver Spring, MD 20904
RECOMMENDED ROOM LAYOUT

**SOCIAL
HALL**

- 14** Voting Booths
- 9** Seated Voting
- 6** Poll Books
- 4** BMDs
- 3** Scanners



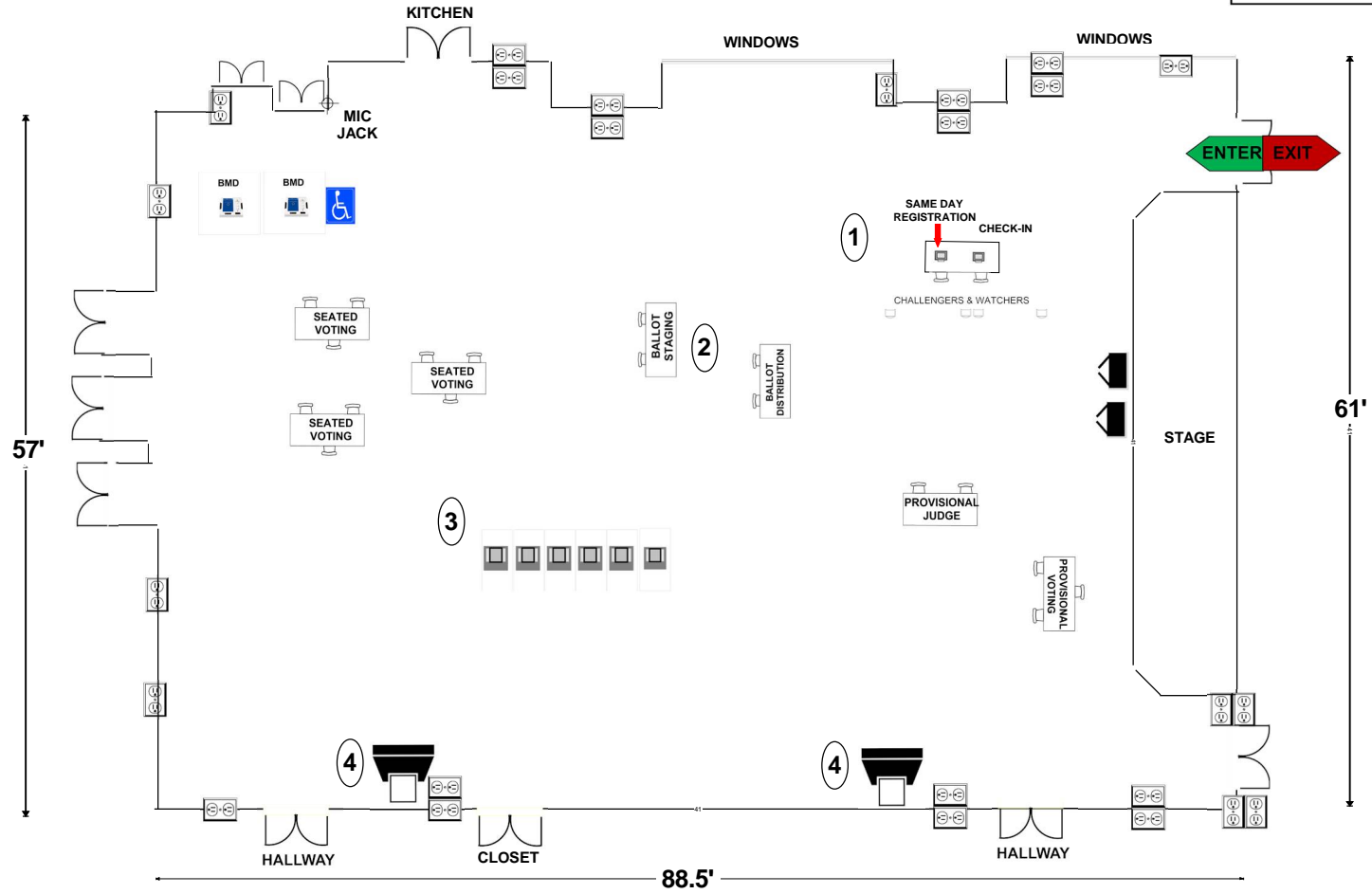
- 6'X2 1/2' Table
- Voting Booths with 2 1/2'X5' clearance
- Scanner
- Window
- Ballot Marking Device
- Vending Machine
- Electronic Poll Book
- Black Transfer Cart
- Voter Travel
- 2 plug outlet
- Fire alarm

Montgomery County
Board of Elections
10/4/2024

05-14 St. Camillus Parish Life and Education Center

1500 St. Camillus Dr
Silver Spring, MD 20903

- 6 Voting Booths
- 9 Seated Voting
- 2 Poll Books
- 2 BMDs
- 2 Scanners



- 6'X2 1/2' Table
- Voting Booths with 2 1/2'X5' clearance
- Transfer Cart
- Window
- Ballot Marking Device
- Vending Machine
- Electronic Poll Book
- Scanner
- Scanner Judge stands
2 - 3 feet from scanner
- 1 Voter Travel
- 2 plug outlet
- Fire alarm

Montgomery County
Board of Elections
8/30/2024

05-15 Cloverly Elementary School

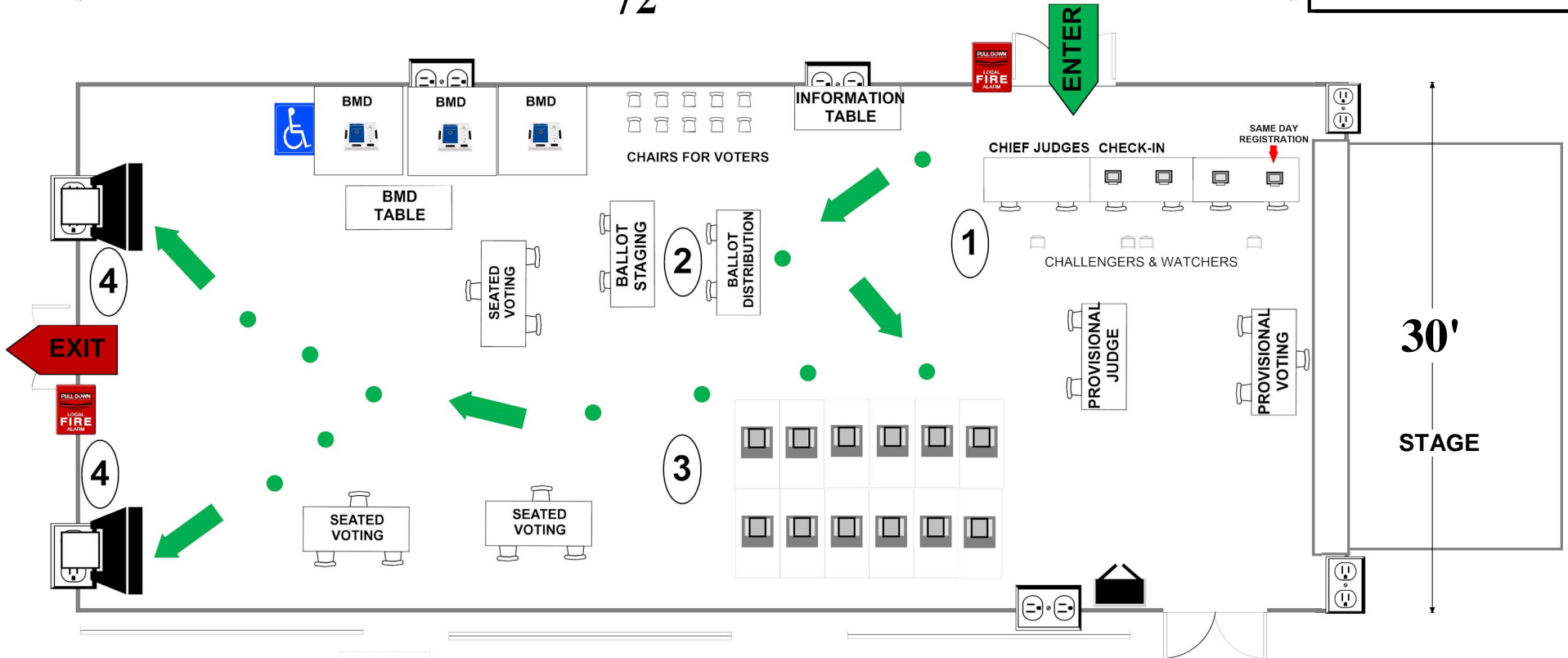
800 Briggs Chaney Rd
Silver Spring, MD 20905

ALL-PURPOSE ROOM

RECOMMENDED ROOM LAYOUT

- 12** Voting Booths
- 9** Seated Voting
- 4** Poll Books
- 3** BMDs
- 2** Scanners

72'



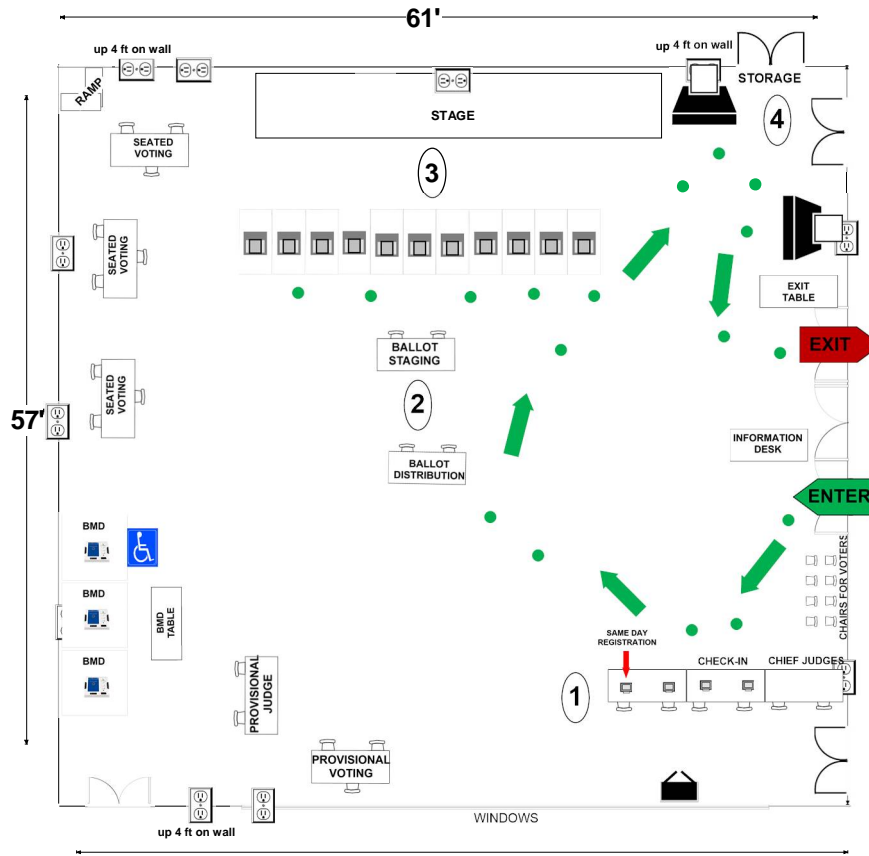
- 6'X2 1/2' Table
- Voting Booths with 2 1/2'X5' clearance
- Scanner
- Window
- BMD
- Ballot Marking Device
- Vending Machine
- Electronic Poll Book
- Black Transfer Cart
- 1 Voter Travel
- 2 plug outlet
- Fire alarm

Montgomery County
Board of Elections
8/22/2024

05-16 STONEGATE ELEMENTARY SCHOOL
14811 Notley Road
Silver Spring, MD 20905
RECOMMENDED ROOM LAYOUT

- 11** Voting Booths
- 9** Seated Voting
- 4** Poll Books
- 3** BMDs
- 2** Scanners

ALL-PURPOSE ROOM



- 6'X2 1/2' Table
- Voting Booth
- Transfer Cart
- Window
- Ballot Marking Device
- Electronic Poll Book
- Scanner
- Column
- 1 • Voter Travel
- 2 plug outlet
- Accessible Voting booth/ Ballot Marking Device
- Fire alarm

Montgomery County
 Board of Elections
 10/4/2024

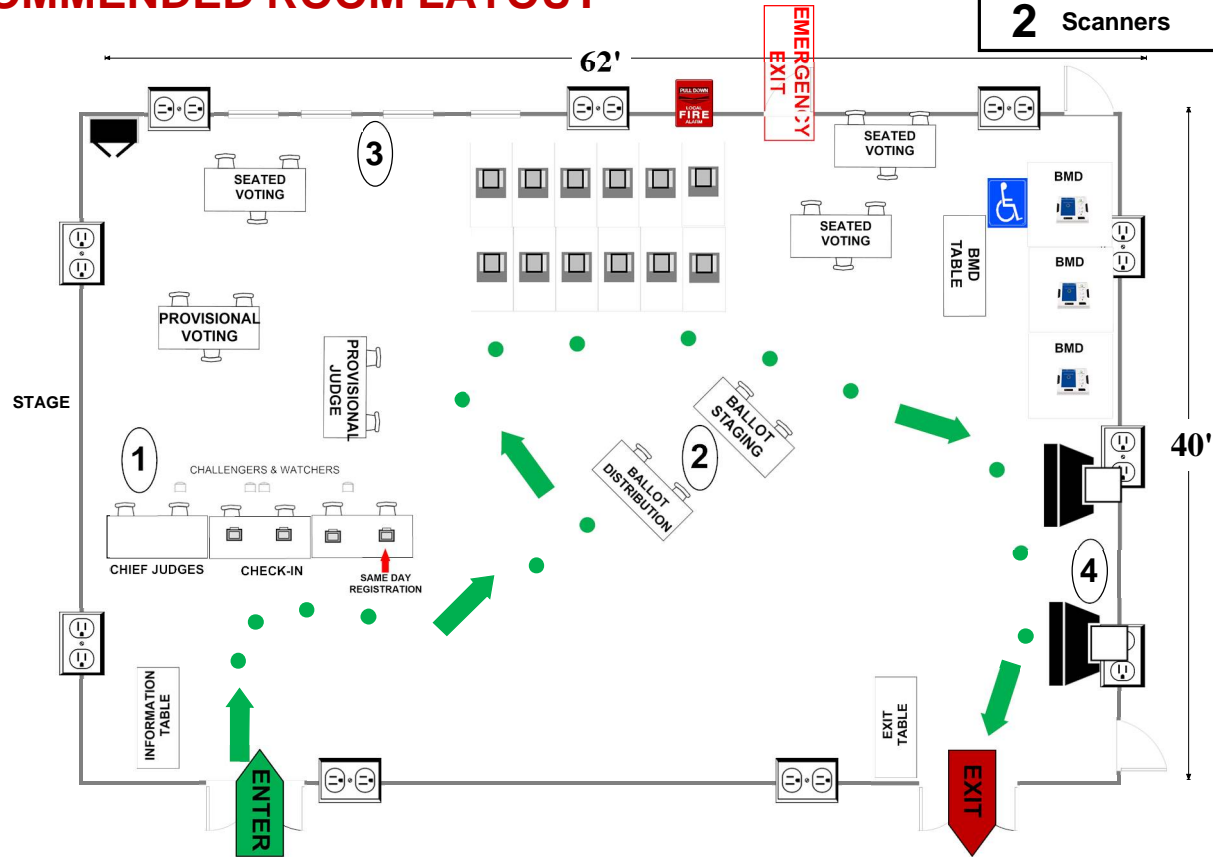
05-17 Fairland School Center

13313 Old Columbia Pk
Silver Spring, MD 20904

ALL-PURPOSE ROOM

RECOMMENDED ROOM LAYOUT

- 12** Voting Booths
- 9** Seated Voting
- 4** Poll Books
- 3** BMDs
- 2** Scanners



	6'X2 1/2' Table		Ballot Marking Device		Voter Travel
	Voting Booths with 2 1/2'X5' clearance		Vending Machine		2 plug outlet
	Transfer Cart		Electronic Poll Book		Scanner
	Window		Scanner Judge stands 2 - 3 feet from scanner		Fire alarm

Montgomery County
Board of Elections
9/03/2024

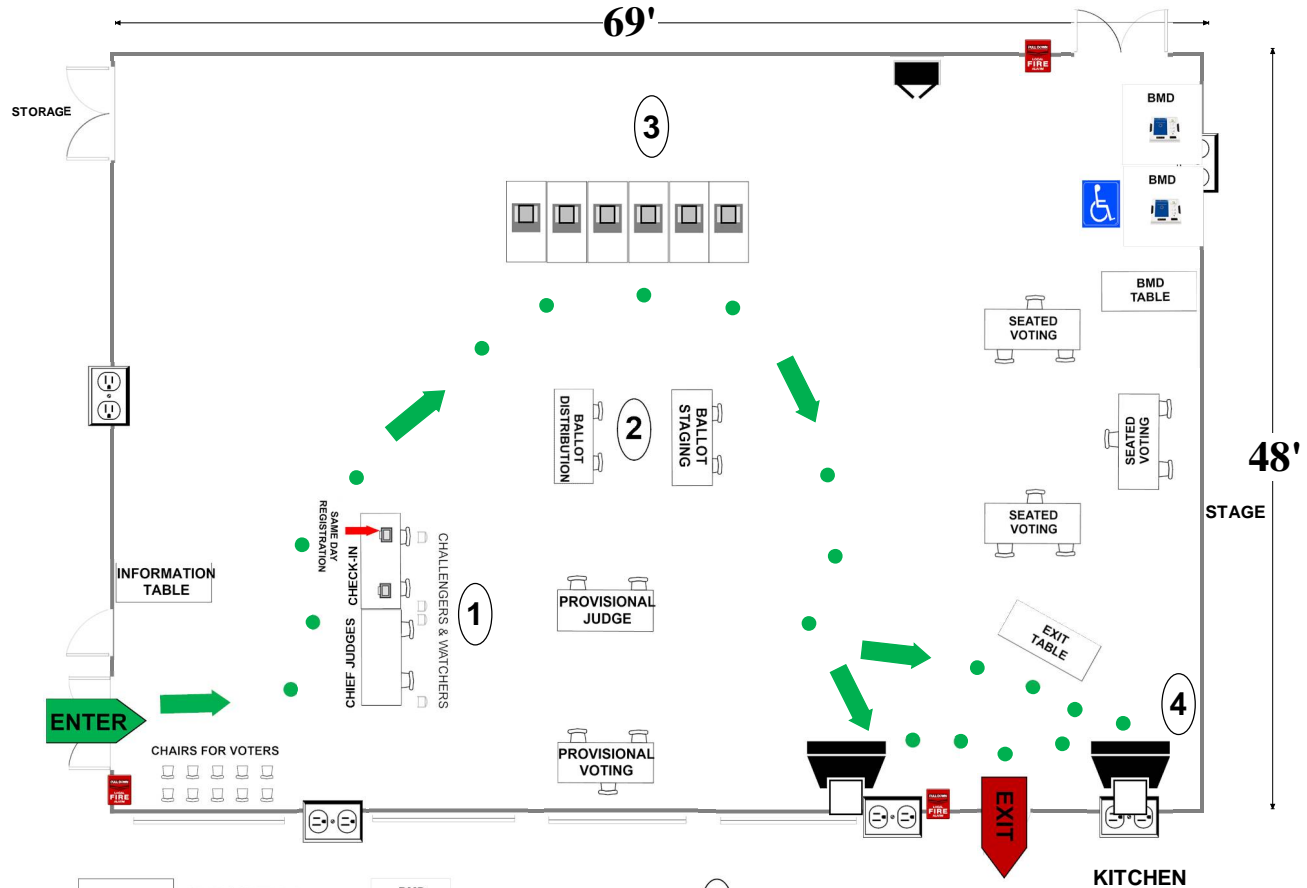
05-18 Burtonsville Elementary School

15516 Old Columbia Pike
Burtonsville, MD 20866

ALL-PURPOSE
ROOM

RECOMMENDED ROOM LAYOUT

- 6** Voting Booths
- 9** Seated Voting
- 2** Poll Books
- 2** BMDs
- 2** Scanners



- 6'X2 1/2' Table
- Voting Booths with 2 1/2'X5' clearance
- Transfer Cart
- Window
- Ballot Marking Device
- Vending Machine
- Electronic Poll Book
- Scanner
- Scanner Judge stands**
2 - 3 feet from scanner
- Voter Travel
- 2 plug outlet
- Fire alarm

Montgomery County
Board of Elections

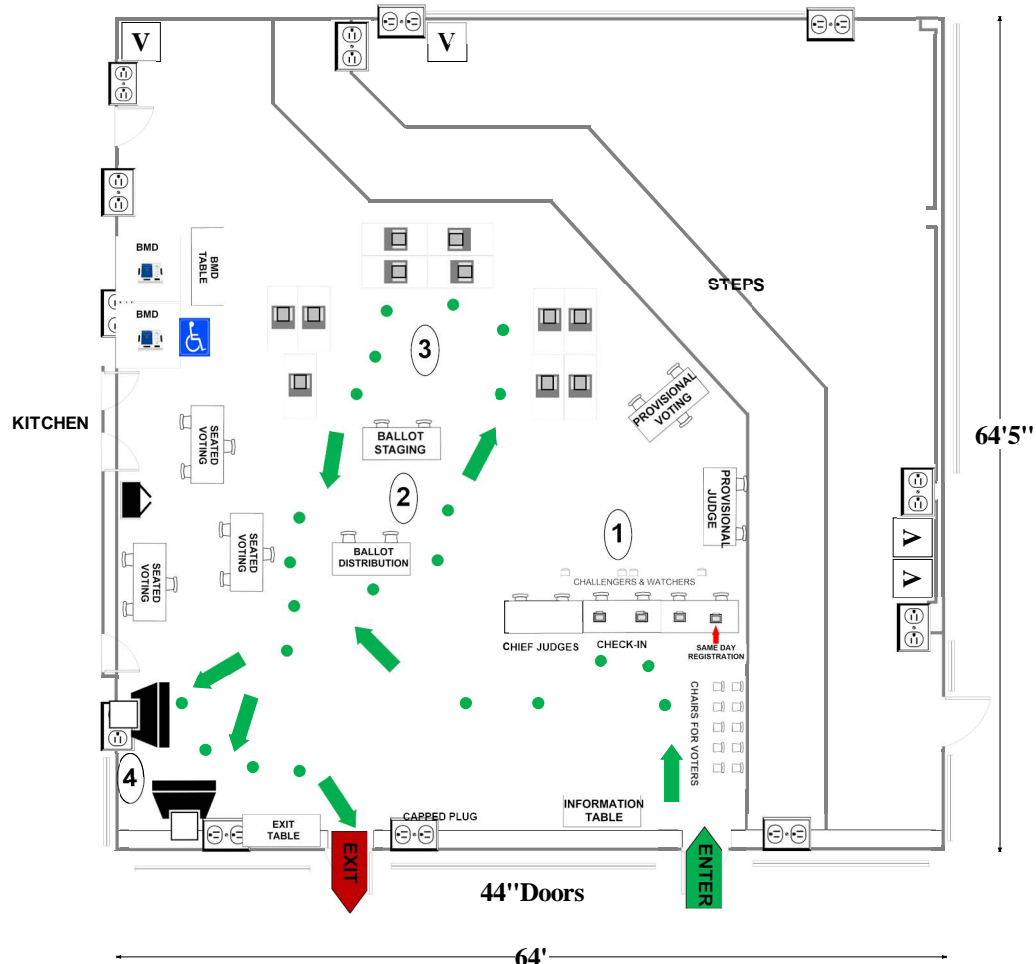
9/3/2024

05-19 Benjamin Banneker Middle School
 14800 Perrywood Dr
 Burtonsville, MD 20866

CAFETERIA

RECOMMENDED ROOM LAYOUT

- | | |
|-----------|---------------|
| 11 | Voting Booths |
| 9 | Seated Voting |
| 4 | Poll Books |
| 2 | BMDs |
| 2 | Scanners |

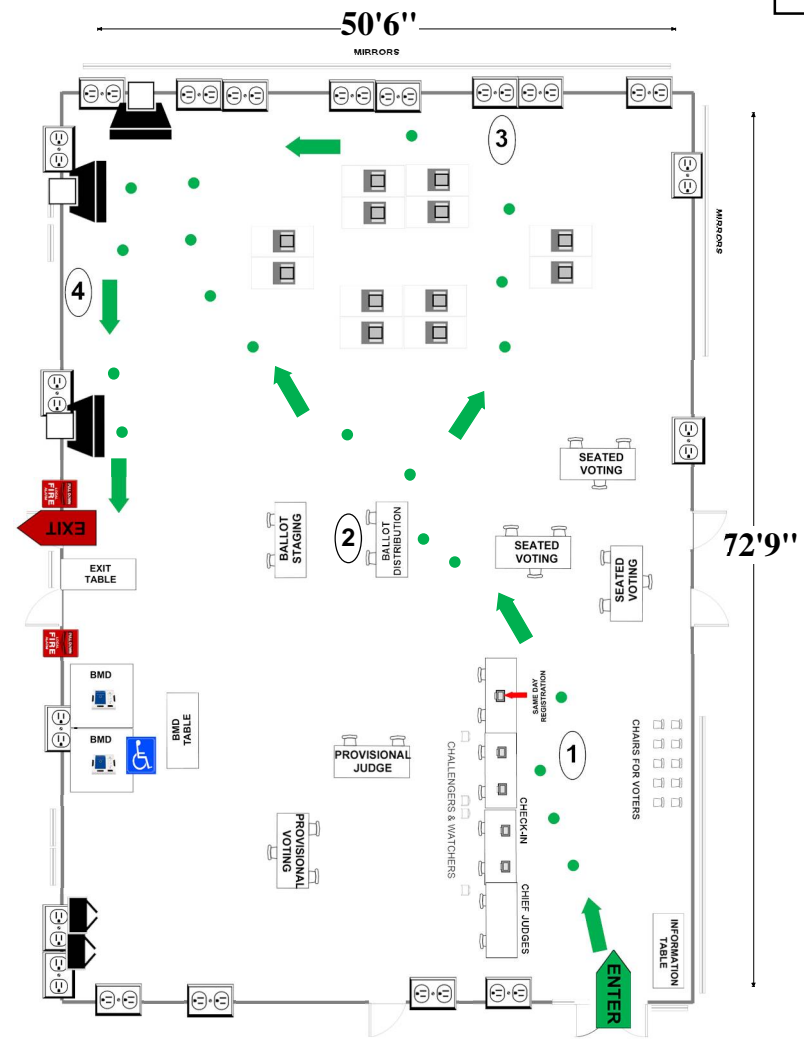


- | | | | | | |
|--|--|--|---|--|----------------|
| | 6'x2 1/2' Table | | Ballot Marking Device | | 1 Voter Travel |
| | Voting Booths with 2 1/2'x5' clearance | | Vending Machine | | 2 plug outlet |
| | Transfer Cart | | Electronic Poll Book | | Fire alarm |
| | Window | | Scanner | | |
| | | | Scanner Judge stands
2 - 3 feet from scanner | | |

05-21 East County Community Recreation Center
 3310 Gateshead Manor Way
 Silver Spring, MD 20904
RECOMMENDED ROOM LAYOUT

SOCIAL HALL

- | | |
|-----------|---------------|
| 12 | Voting Booths |
| 9 | Seated Voting |
| 5 | Poll Books |
| 2 | BMDs |
| 3 | Scanners |



- | | | | | | |
|--|-------------------------------------|--|---|--|----------------|
| | 6'X2½' Table | | BMD Ballot Marking Device | | 1 Voter Travel |
| | Voting Booths with 2½'X5' clearance | | Vending Machine | | 2 plug outlet |
| | Transfer Cart | | Electronic Poll Book | | Fire alarm |
| | Window | | Scanner | | |
| | | | Scanner Judge stands
2 - 3 feet from scanner | | |

Montgomery County
 Board of Elections
 9/3/2024

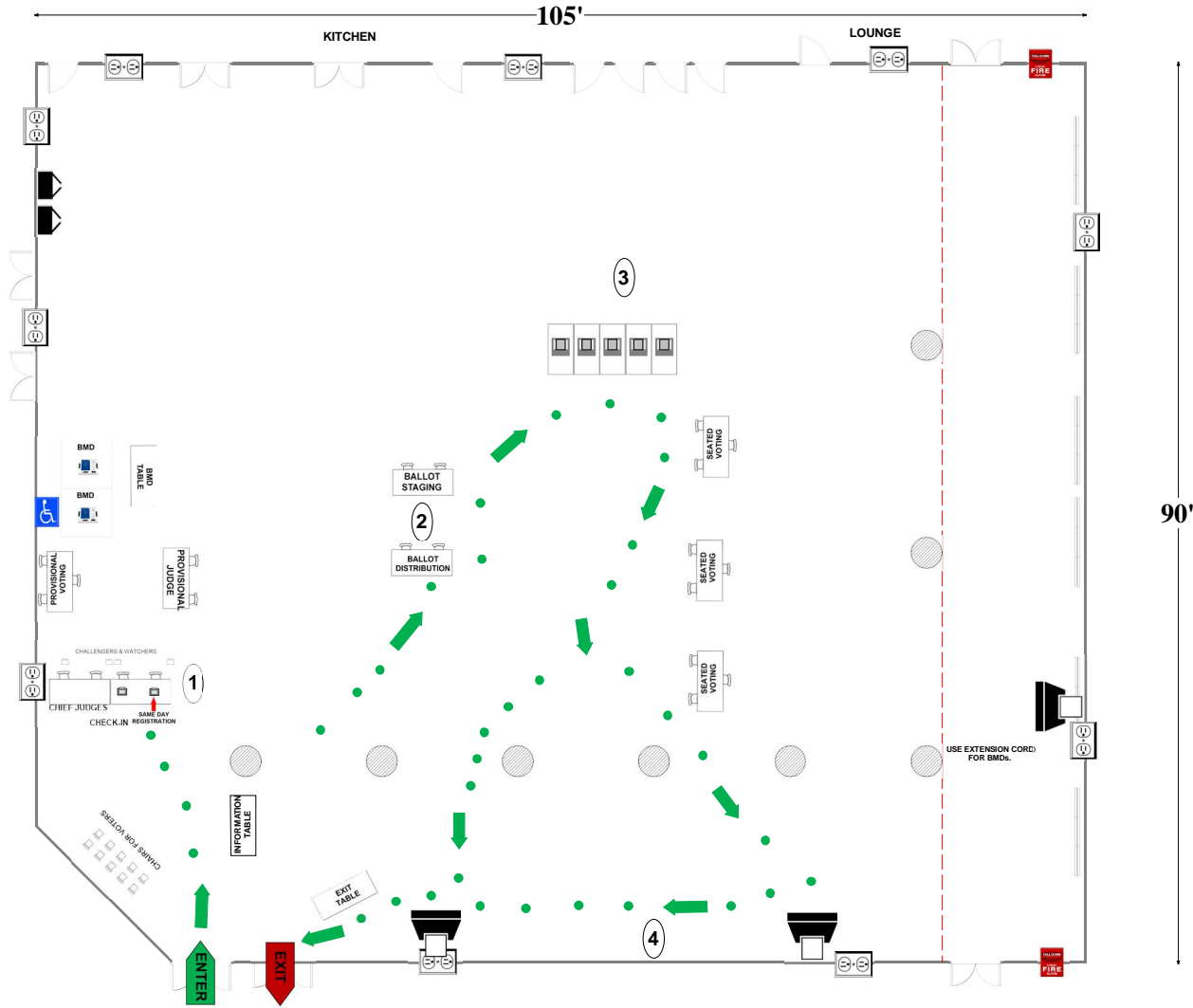
05-22 Springbrook High School

201 Valley Brook Drive
Silver Spring, MD 20904

RECOMMENDED ROOM LAYOUT

CAFETERIA

- 5** Voting Booths
- 9** Seated Voting
- 2** Poll Books
- 2** BMDs
- 2** Scanners



- | | | | | | |
|--|--|--|---|--|----------------|
| | 6'x2 1/2' Table | | BMD Ballot Marking Device | | 1 Voter Travel |
| | Voting Booths with 2 1/2'x5' clearance | | Vending Machine | | 2 plug outlet |
| | Transfer Cart | | Electronic Poll Book | | Fire alarm |
| | Window | | Scanner | | Column |
| | | | Scanner Judge stands
2 - 3 feet from scanner | | |

Montgomery County
Board of Elections
9/4/2024

05-23 Marilyn J. Praisner Community Recreation Center

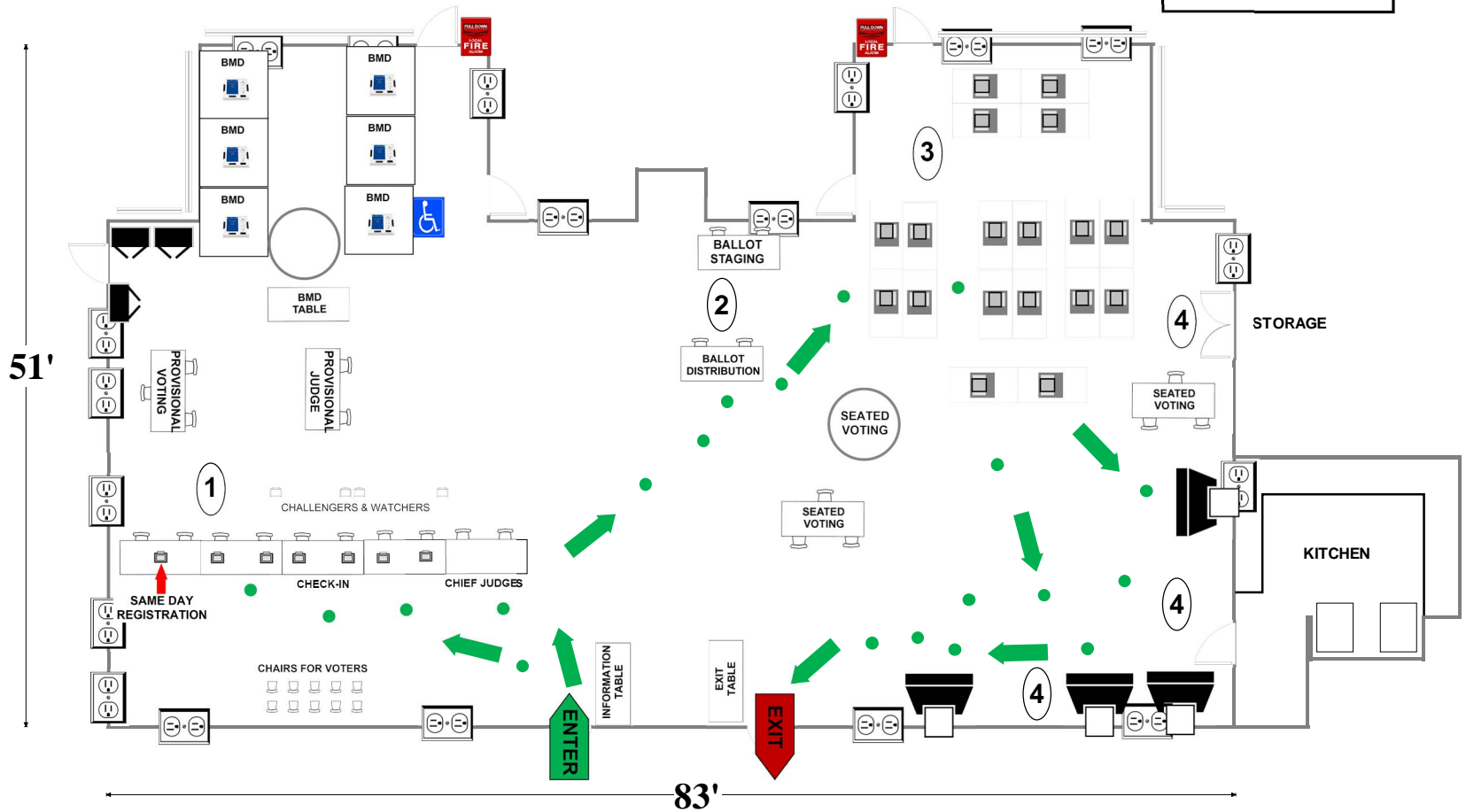
14906 Old Columbia Pike

Burtonsville, MD 20866

RECOMMENDED ROOM LAYOUT

SOCIAL HALL

- 18** Voting Booths
- 9** Seated Voting
- 7** Poll Books
- 6** BMDs
- 4** Scanners



- 6'X2 1/2' Table
- Voting Booths with 2 1/2'X5' clearance
- Transfer Cart
- Window
- BMD Ballot Marking Device
- Vending Machine
- Electronic Poll Book
- Scanner
- Scanner Judge stands**
2 - 3 feet from scanner
- 1 Voter Travel
- 2 plug outlet
- Fire alarm

Montgomery County
Board of Elections
9/4/2024