

06-01 Jones Lane Elementary School

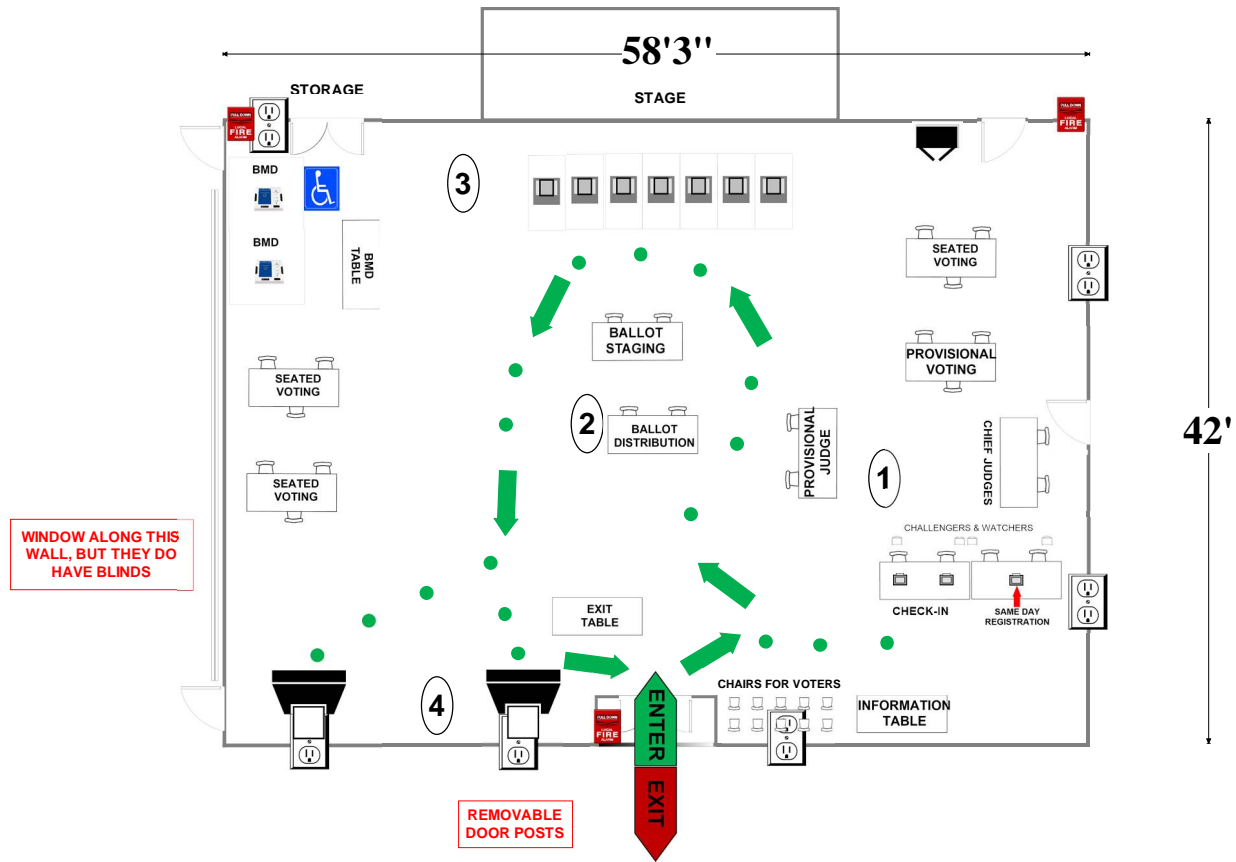
15110 Jones Ln

Gaithersburg, MD 20878

RECOMMENDED ROOM LAYOUT

ALL-PURPOSE ROOM

- 7** Voting Booths
- 9** Seated Voting
- 3** Poll Books
- 2** BMDs
- 2** Scanners



- 6'x2 1/2' Table
- Voting Booths with 2 1/2'x5' clearance
- Transfer Cart
- Window
- Ballot Marking Device
- Vending Machine
- Electronic Poll Book
- Scanner
- Scanner Judge stands**
2 - 3 feet from scanner
- 1 Voter Travel
- 2 plug outlet
- Fire alarm

Montgomery County
Board of Elections
9/4/2024

06-02 SS Peter & Paul Orthodox Church

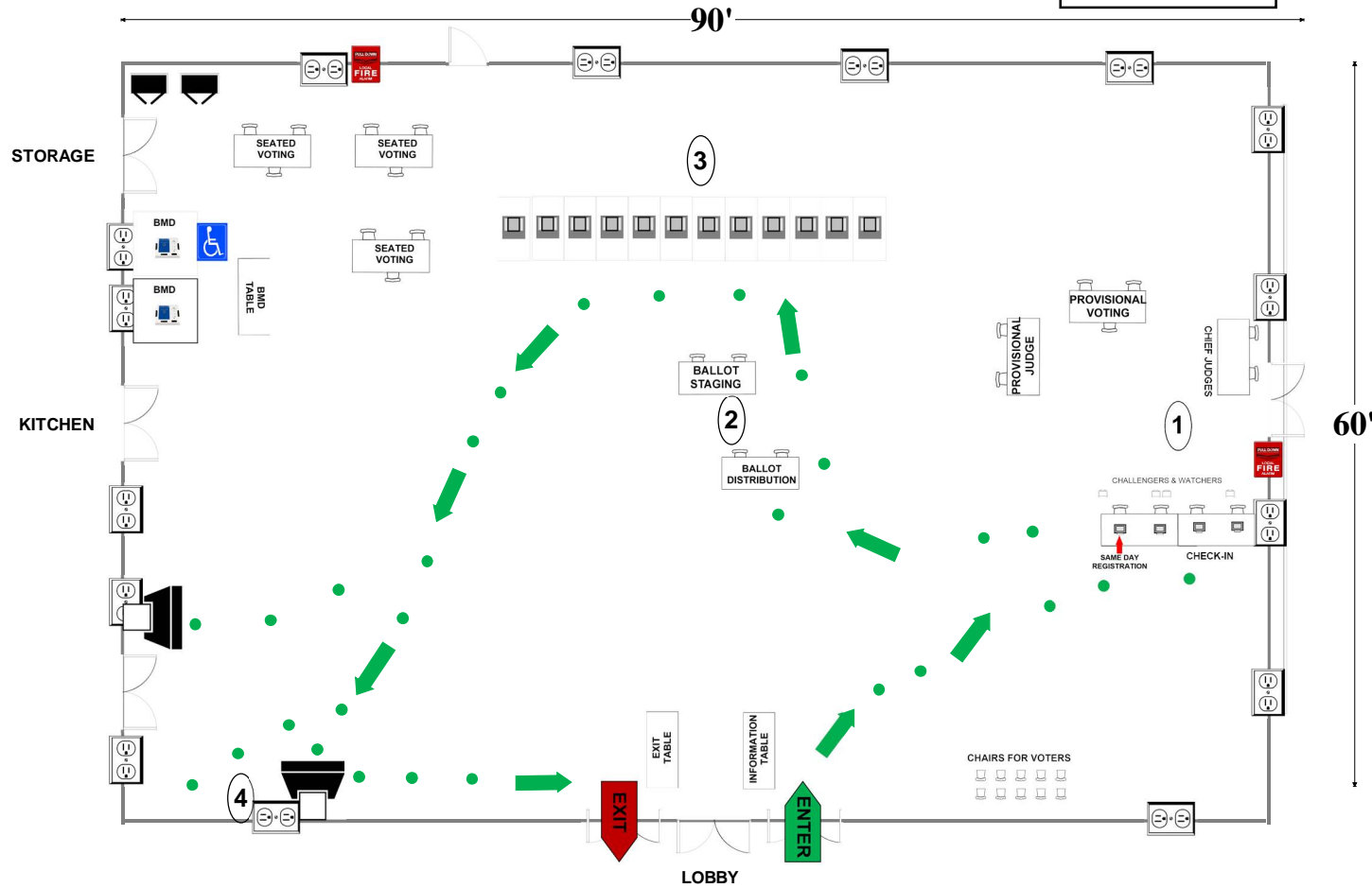
10620 River Rd

Potomac, MD 20854

RECOMMENDED ROOM LAYOUT

BANQUET HALL

- | | |
|-----------|---------------|
| 12 | Voting Booths |
| 9 | Seated Voting |
| 4 | Poll Books |
| 2 | BMDs |
| 2 | Scanners |



- | | | | | | |
|--|--|--|---|--|---------------|
| | 6'X2 1/2' Table | | Ballot Marking Device | | Voter Travel |
| | Voting Booths with 2 1/2'X5' clearance | | Vending Machine | | 2 plug outlet |
| | Transfer Cart | | Electronic Poll Book | | Scanner |
| | Window | | Scanner Judge stands 2 - 3 feet from scanner | | Fire alarm |

Montgomery County
Board of Elections
10/11/2024

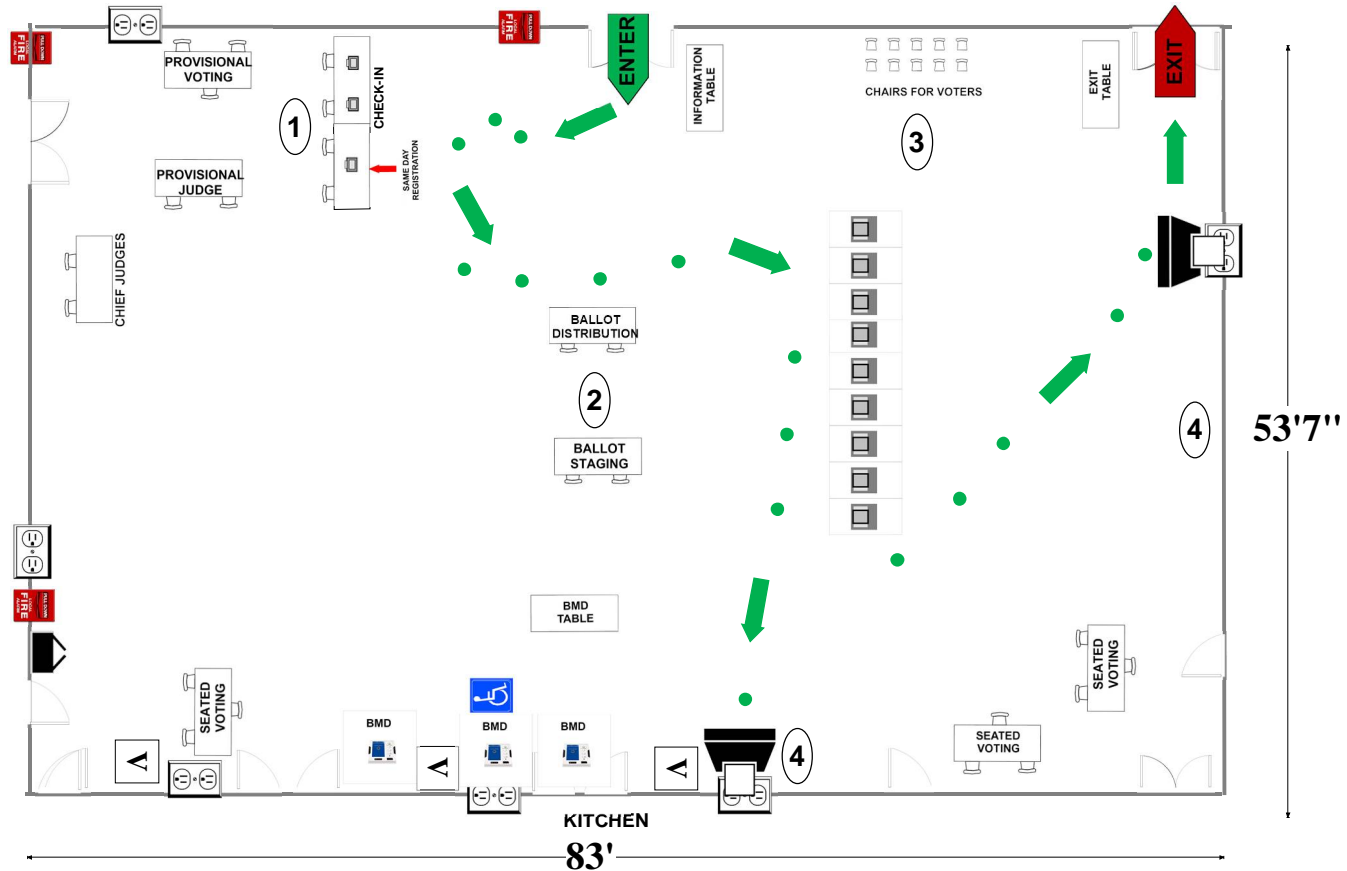
06-03/06-17 Ridgeview Middle School

16600 Raven Rock Dr
Gaithersburg, MD 20878

RECOMMENDED ROOM LAYOUT

- 9** Voting Booths
- 9** Seated Voting
- 3** Poll Books
- 3** BMDs
- 2** Scanners

CAFETERIA



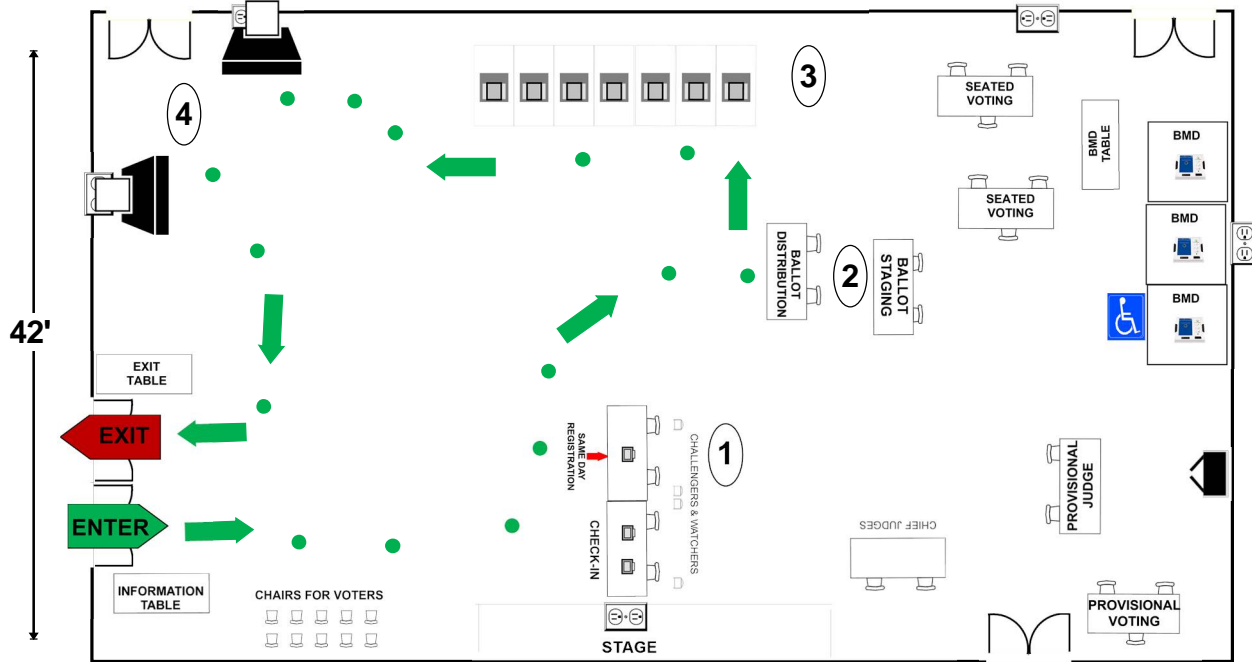
- | | | | | | |
|--|--|--|---|--|---------------|
| | 6'X2 1/2' Table | | Ballot Marking Device | | Voter Travel |
| | Voting Booths with 2 1/2'X5' clearance | | Vending Machine | | 2 plug outlet |
| | Transfer Cart | | Electronic Poll Book | | Scanner |
| | Window | | Scanner Judge stands 2 - 3 feet from scanner | | Fire alarm |

Montgomery County
Board of Elections
9/4/2024

06-04 Dufief Elementary School
15001 Dufief Drive
Gaithersburg, MD 20878
RECOMMENDED ROOM LAYOUT

ALL-PURPOSE ROOM

- 7** Voting Booths
- 6** Seated Voting
- 3** Poll Books
- 3** BMDs
- 2** Scanners



42' (vertical dimension)
 72' (horizontal dimension)

- 6'X2½' Table
- Voting Booth
- Transfer Cart
- Window
- Ballot Marking Device
- Electronic Poll Book
- Scanner
- Column
- 1 • Voter Travel
- 2 plug outlet
- Accessible Voting booth/ Ballot Marking Device
- Fire alarm

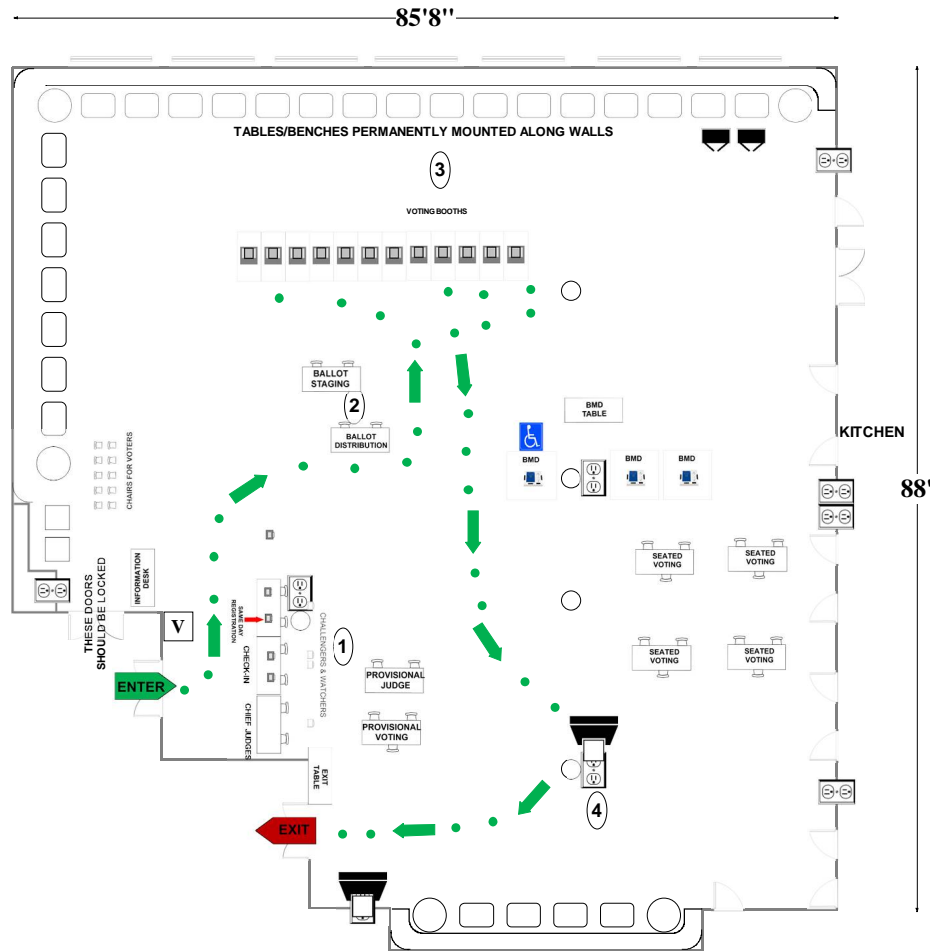
Montgomery County
 Board of Elections
 10/4/2024

06-05 Quince Orchard High School
 15800 Quince Orchard Rd.
 Gaithersburg, MD 20878

CAFETERIA

RECOMMENDED ROOM LAYOUT

- 12 Voting Booths
- 12 Seated Voting
- 4 Poll Books
- 3 BMDs
- 2 Scanners



- 6'x2 1/2' Table
- Voting Booths with 2 1/2'x5' clearance
- Transfer Cart
- Window
- Ballot Marking Device
- Vending Machine
- Scanner
- Scanner Judge stands
2 - 3 feet from scanner
- 1 Voter Travel
- 2 plug outlet
- Electronic Poll Book
- Fire alarm
- Column

Montgomery County
 Board of Elections
 9/4/2024

06-06 Travilah Elementary School

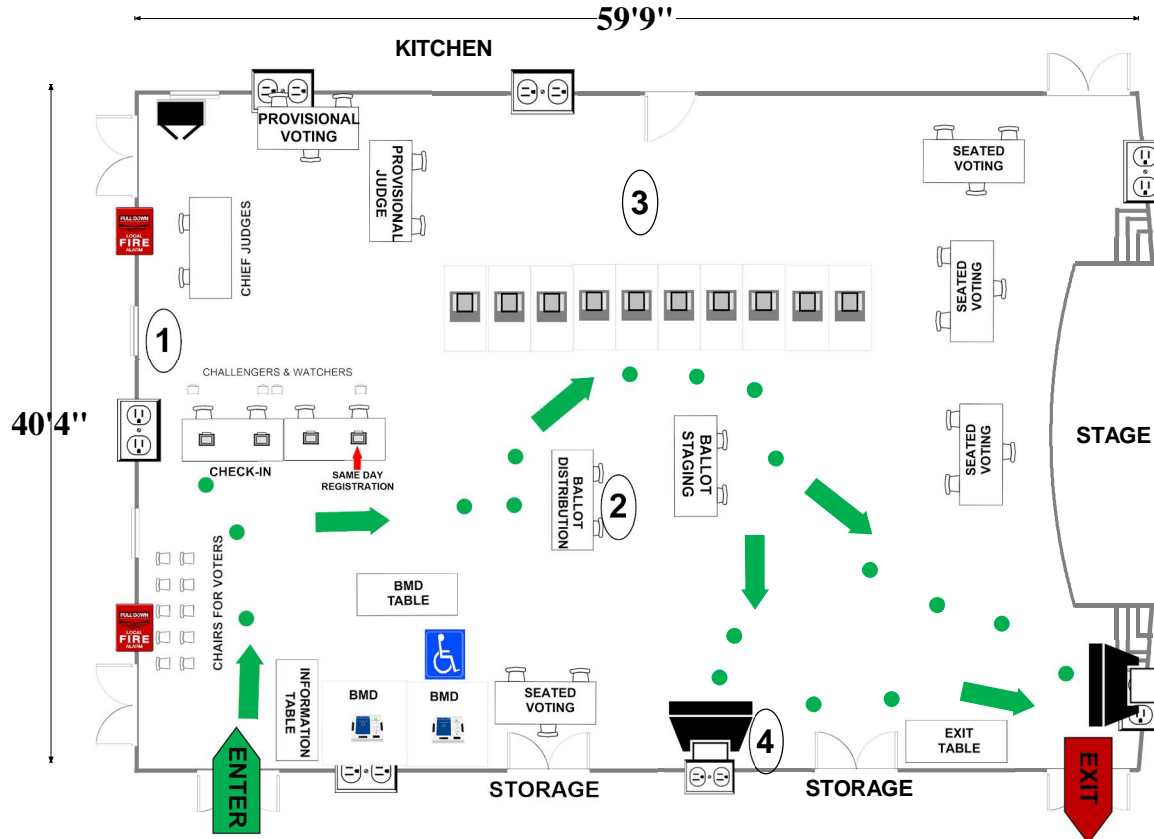
13801 DuFief Mill Rd

North Potomac, MD 20878

RECOMMENDED ROOM LAYOUT

ALL-PURPOSE ROOM

- 10** Voting Booths
- 12** Seated Voting
- 4** Poll Books
- 2** BMDs
- 2** Scanners



- 6'X2½' Table
- Voting Booths with 2½'X5' clearance
- Transfer Cart
- Window
- Ballot Marking Device
- Vending Machine
- Electronic Poll Book
- Scanner
- Scanner Judge stands**
2 - 3 feet from scanner
- Voter Travel
- 2 plug outlet
- Fire alarm

Montgomery County
Board of Elections
9/4/2024

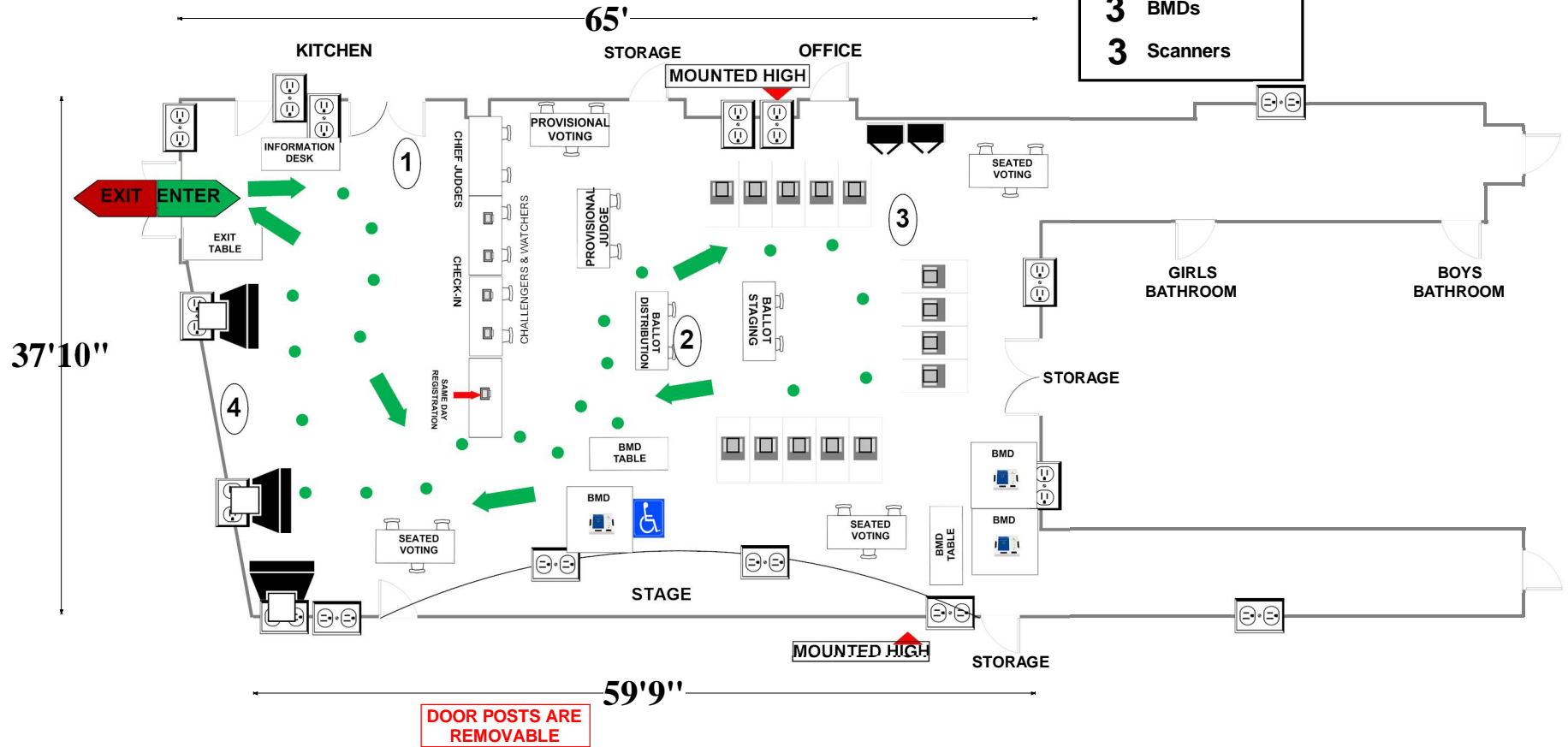
06-07 Spark Matsunaga Elementary School

13902 Bromfield Rd
Germantown, MD 20874

RECOMMENDED ROOM LAYOUT

ALL-PURPOSE ROOM

- 14** Voting Booths
- 9** Seated Voting
- 5** Poll Books
- 3** BMDs
- 3** Scanners



- | | | | | | |
|--|--|--|---|--|----------------|
| | 6'X2 1/2' Table | | Ballot Marking Device | | 1 Voter Travel |
| | Voting Booths with 2 1/2'X5' clearance | | Vending Machine | | 2 plug outlet |
| | Transfer Cart | | Electronic Poll Book | | Fire alarm |
| | Window | | Scanner | | |
| | | | Scanner Judge stands 2 - 3 feet from scanner | | |

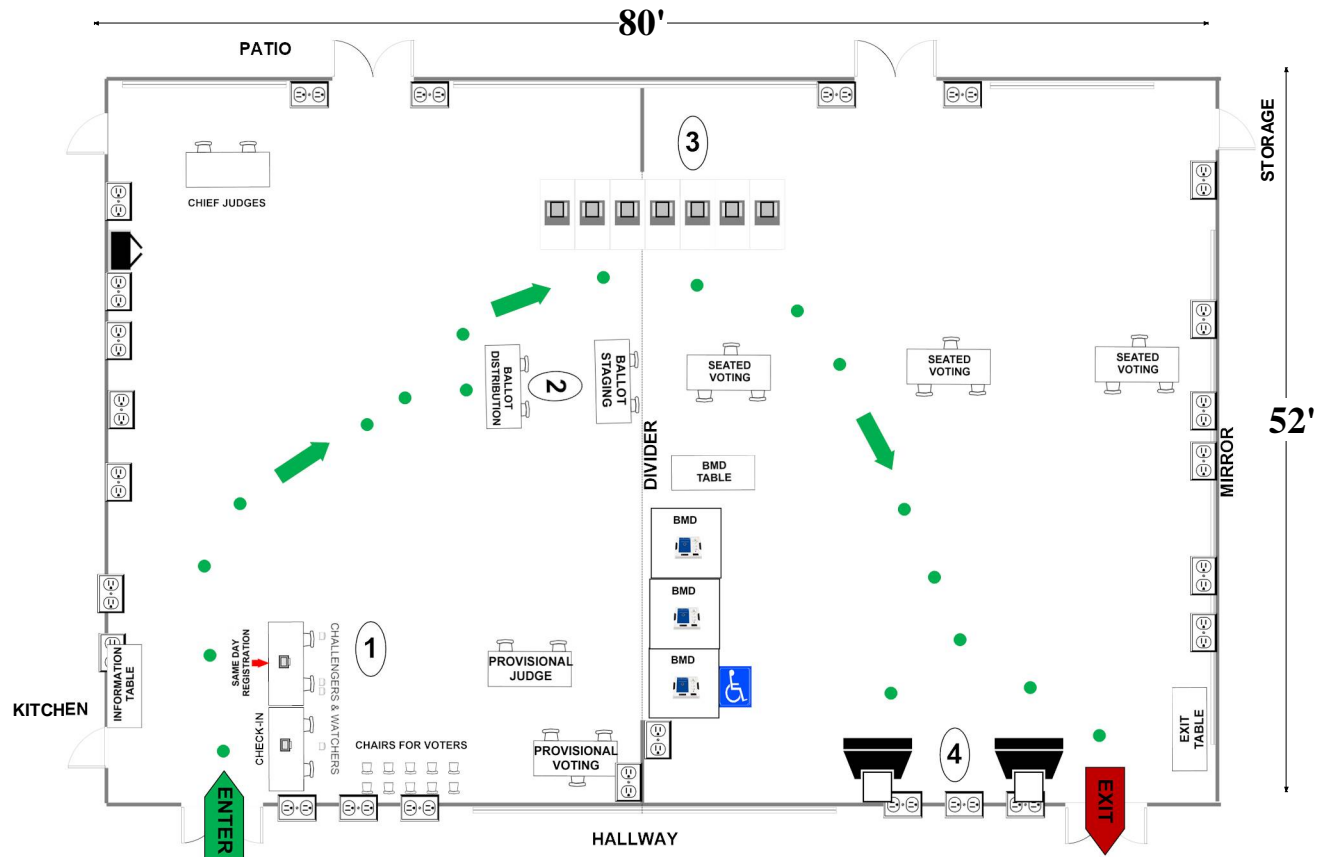
Montgomery County
Board of Elections
10/4/2024

**06-08 Nancy H. Dacek N. Potomac
Community Recreation Center**
13850 Travilah Rd
Rockville, MD 20850
RECOMMENDED ROOM LAYOUT

SOCIAL HALL

USE CELL PHONE

- 7** Voting Booths
- 9** Seated Voting
- 2** Poll Books
- 3** BMDs
- 2** Scanners



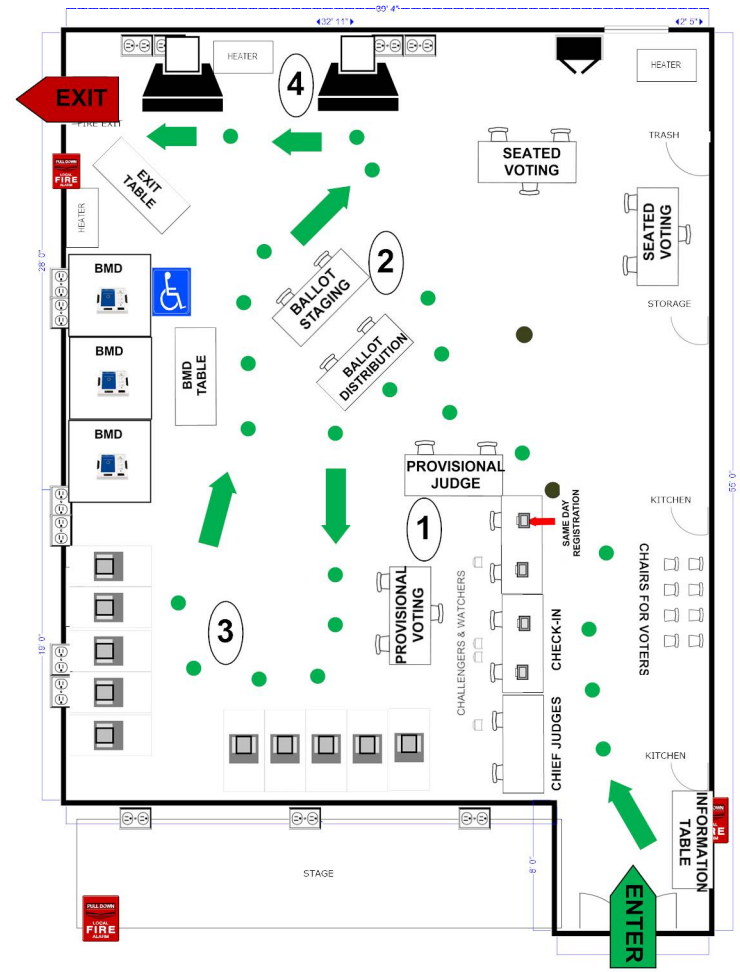
- 6'X2½' Table
- Voting Booths with 2½'X5' clearance
- Transfer Cart
- Window
- Ballot Marking Device
- Vending Machine
- Electronic Poll Book
- Scanner
- Scanner Judge stands
2 - 3 feet from scanner**
- Voter Travel
- 2 plug outlet
- Fire alarm

Montgomery County
Board of Elections
9/4/2024

06-09 Darnestown Elementary School
 15030 Turkey Foot Rd
 Gaithersburg, MD 20878
RECOMMENDED ROOM LAYOUT

ALL-PURPOSE ROOM

- 10** Voting Booths
- 6** Seated Voting
- 4** Poll Books
- 3** BMDs
- 2** Scanners



- 6'X2½' Table
- Voting Booths with 2½'X5' clearance
- Transfer Cart
- Window
- Ballot Marking Device
- Vending Machine
- Electronic Poll Book
- Scanner
- Scanner Judge stands**
2 - 3 feet from scanner
- Voter Travel
- 2 plug outlet
- Fire alarm
- Pillar

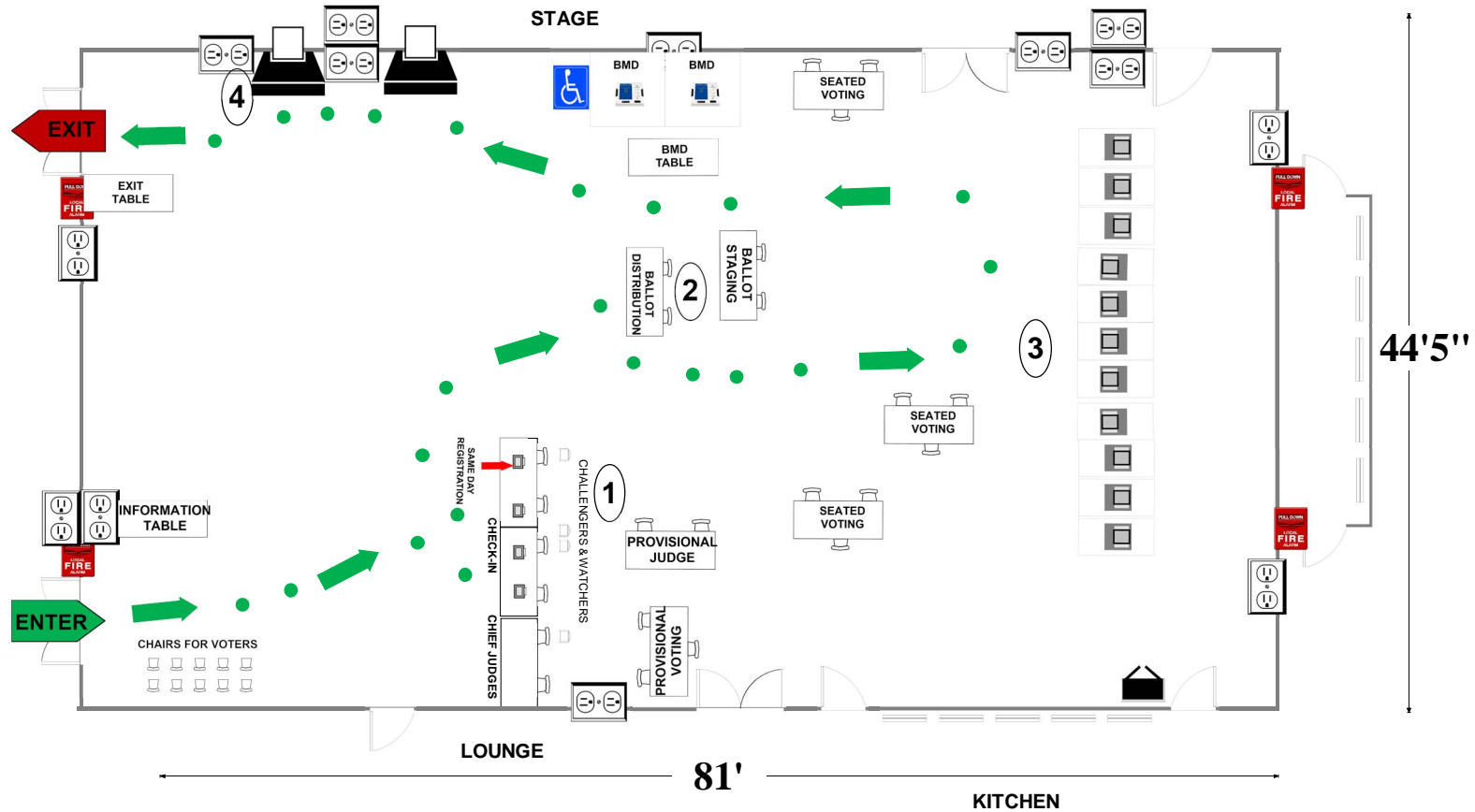
Montgomery County
 Board of Elections
 10/4/2024

06-10 Great Seneca Creek Elementary School

13010 Dairymaid Drive
Germantown, MD 20874

RECOMMENDED ROOM LAYOUT

- 11** Voting Booths
- 9** Seated Voting
- 4** Poll Books
- 2** BMDs
- 2** Scanners



- 6'x2 1/2' Table
- Voting Booths with 2 1/2'x5' clearance
- Transfer Cart
- Window
- Ballot Marking Device
- Vending Machine
- Electronic Poll Book
- Scanner
- Scanner Judge stands**
2 - 3 feet from scanner
- 1 Voter Travel
- 2 plug outlet
- Fire alarm

Montgomery County
Board of Elections

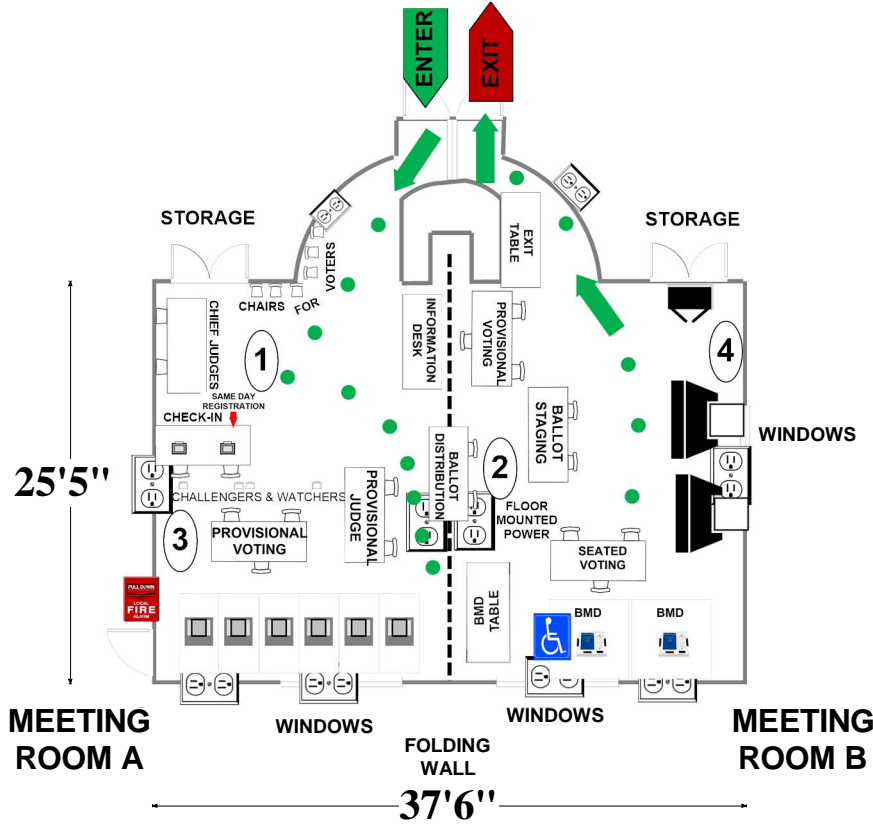
9/4/2024

06-13 Quince Orchard Library
 15831 Quince Orchard Rd
 Gaithersburg, MD 20878

MEETING ROOM

RECOMMENDED ROOM LAYOUT

- | | |
|----------|---------------|
| 6 | Voting Booths |
| 3 | Seated Voting |
| 2 | Poll Books |
| 2 | BMDs |
| 2 | Scanners |



- | | | | | | |
|--|--|--|-----------------------|--|---------------|
| | 6'X2 1/2' Table | | Ballot Marking Device | | Voter Travel |
| | Voting Booths with 2 1/2'X5' clearance | | Vending Machine | | 2 plug outlet |
| | Transfer Cart | | Electronic Poll Book | | Scanner |
| | Window | | Scanner Judge stands | | Fire alarm |
- Scanner Judge stands**
2 - 3 feet from scanner

Montgomery County
 Board of Elections
 10/4/2024

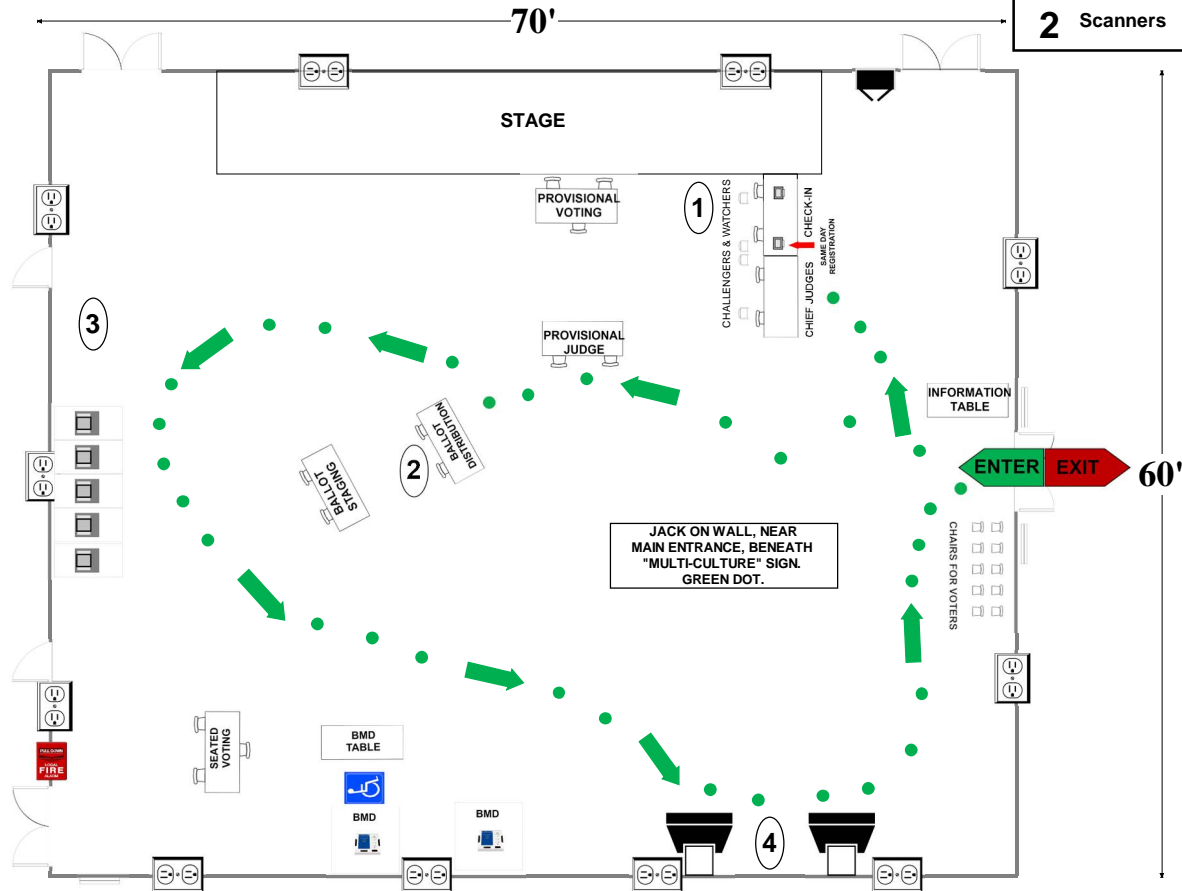
06-14 Stone Mill Elementary School

14323 Stonebridge View Dr.
North Potomac, MD 20878

ALL-PURPOSE ROOM

RECOMMENDED ROOM LAYOUT

- 5** Voting Booths
- 3** Seated Voting
- 2** Poll Books
- 2** BMDs
- 2** Scanners



- | | | | | | |
|--|--|--|----------------------|--|----------------|
| | 6'x2 1/2' Table | | BMD | | 1 Voter Travel |
| | Voting Booths with 2 1/2'x5' clearance | | Vending Machine | | 2 plug outlet |
| | Scanner | | Electronic Poll Book | | Fire alarm |
| | Window | | Black Transfer Cart | | |

Montgomery County
Board of Elections
9/4/2024

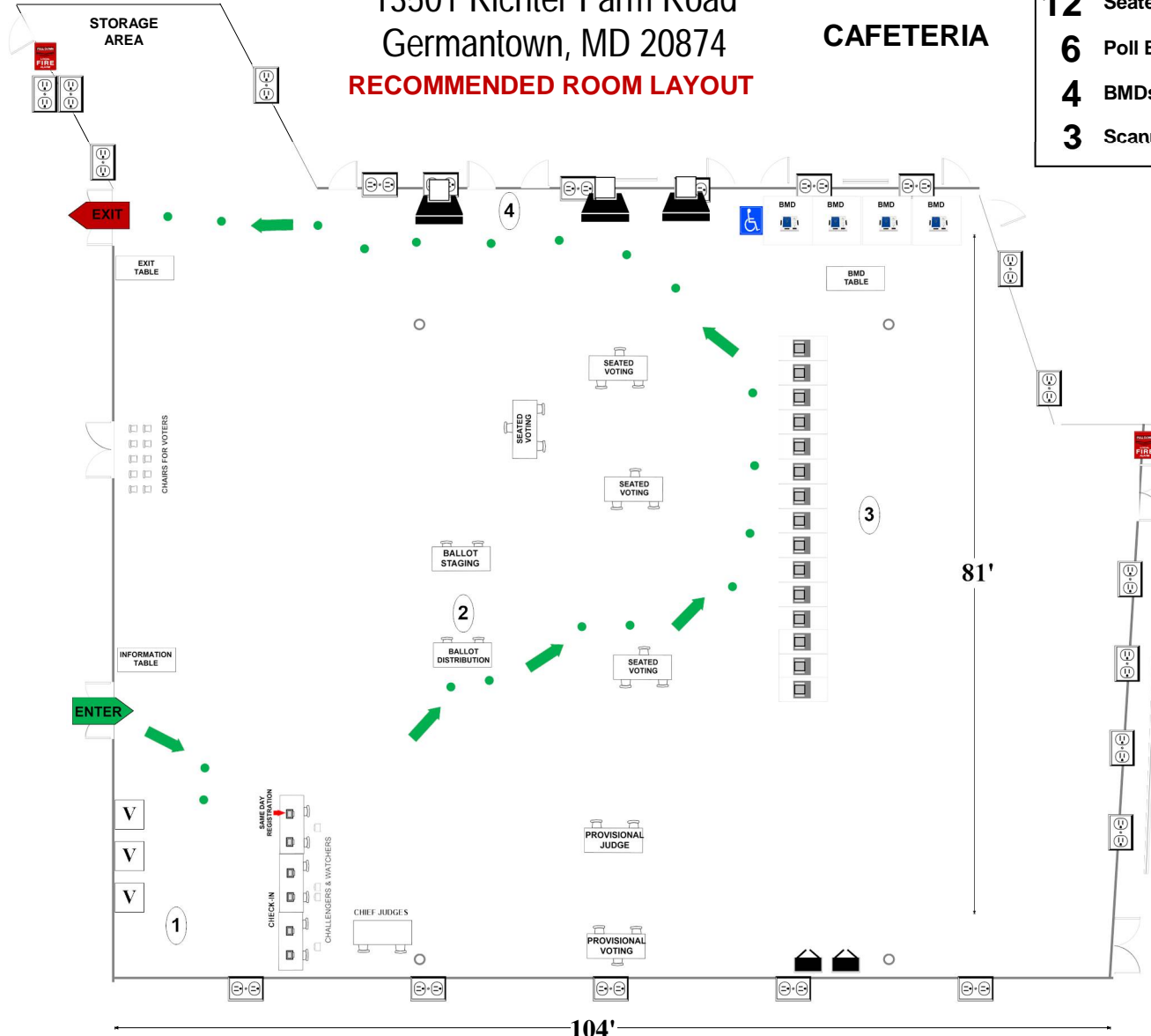
06-15 / 06-11 Northwest High School

13501 Richter Farm Road
Germantown, MD 20874

RECOMMENDED ROOM LAYOUT

CAFETERIA

- 15** Voting Booths
- 12** Seated Voting
- 6** Poll Books
- 4** BMDs
- 3** Scanners



- 6'X2 1/2' Table
- Voting Booths with 2 1/2' X 5' clearance
- Transfer Cart
- Window
- Ballot Marking Device
- Vending Machine
- Electronic Poll Book
- Scanner
- Scanner Judge stands 2 - 3 feet from scanner
- Voter Travel
- 2 plug outlet
- Fire alarm
- Column

Montgomery County
Board of Elections

9/4/2024