

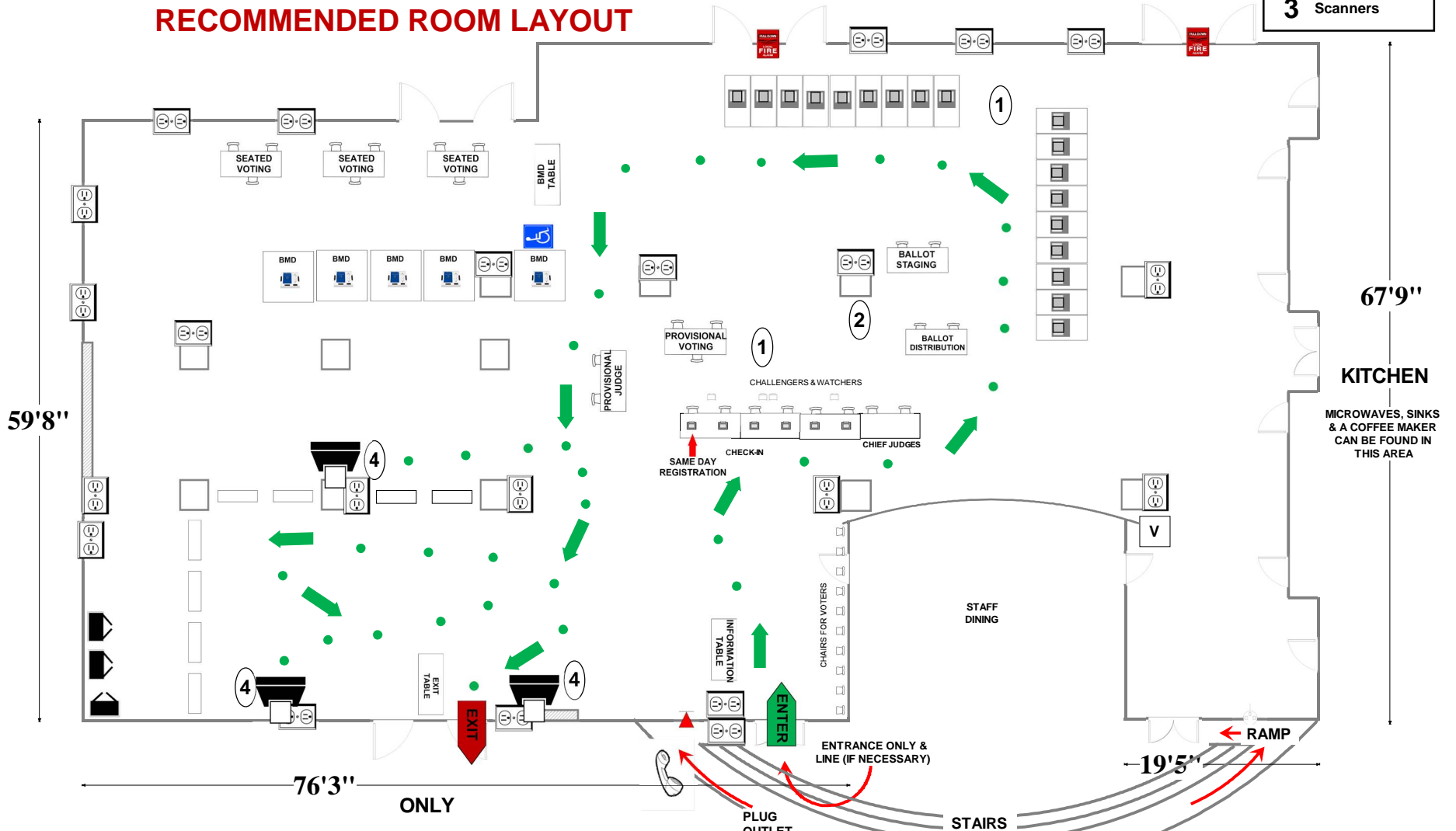
07-01/07-08 Bethesda-Chevy Chase High School

4301 East-West Hwy
Bethesda, MD 20814

CAFETERIA

RECOMMENDED ROOM LAYOUT

- 18** Voting Booths
- 9** Seated Voting
- 7** Poll Books
- 5** BMDs
- 3** Scanners



- 6'X2 1/2' Table
- Voting Booths with 2 1/2'X5' clearance
- Transfer Cart
- Window
- Lunch table
- Ballot Marking Device
- Vending Machine
- Electronic Poll Book
- Scanner
- Scanner Judge stands
2 - 3 feet from scanner
- Voter Travel
- 2 plug outlet
- Fire alarm
- Column

ACCESSIBLE ENTRANCE MUST BE UNLOCKED SEPARATELY BY BUILDING STAFF (LOCATED ABOUT 20' NORTH OF MAIN EXTERIOR DOOR 3 ENTRANCE)

Montgomery County Board of Elections
10/11/2024

07-02 Chevy Chase Village Hall

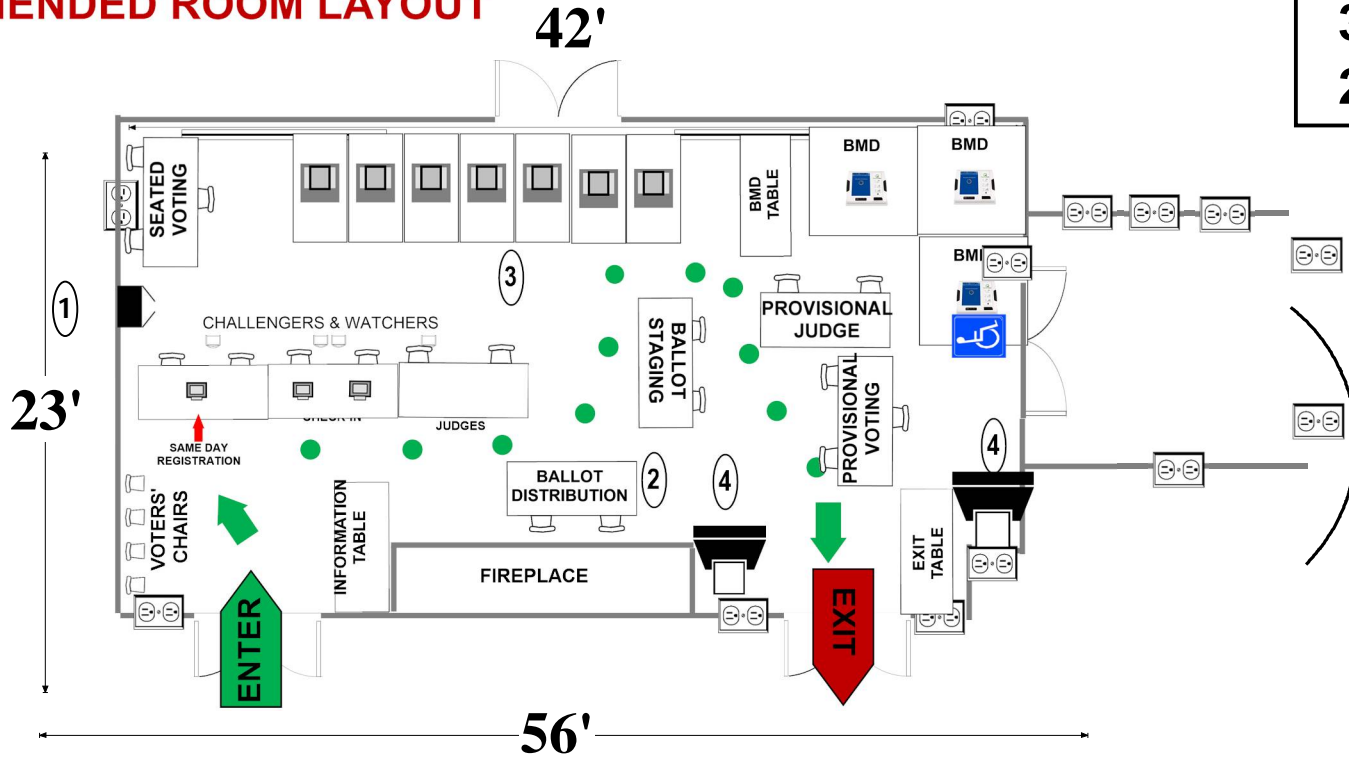
5906 Connecticut Ave.











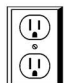

Chevy Chase, MD 20815

RECOMMENDED ROOM LAYOUT

LAMBERT ROOM

- 7** Voting Booths
- 3** Seated Voting
- 3** Poll Books
- 3** BMDs
- 2** Scanners



-  6'X2½' Table
 -  Voting Booths with 2½'X5' clearance
 -  Transfer Cart
 -  Window
 -  BMD
 -  Vending Machine
 -  Electronic Poll Book
 -  Scanner
 -  Fire alarm
 -  Voter Travel
 -  2 plug outlet
 -  FIRE ALARM
- Scanner Judge stands**
2 - 3 feet from scanner

Montgomery County
Board of Elections

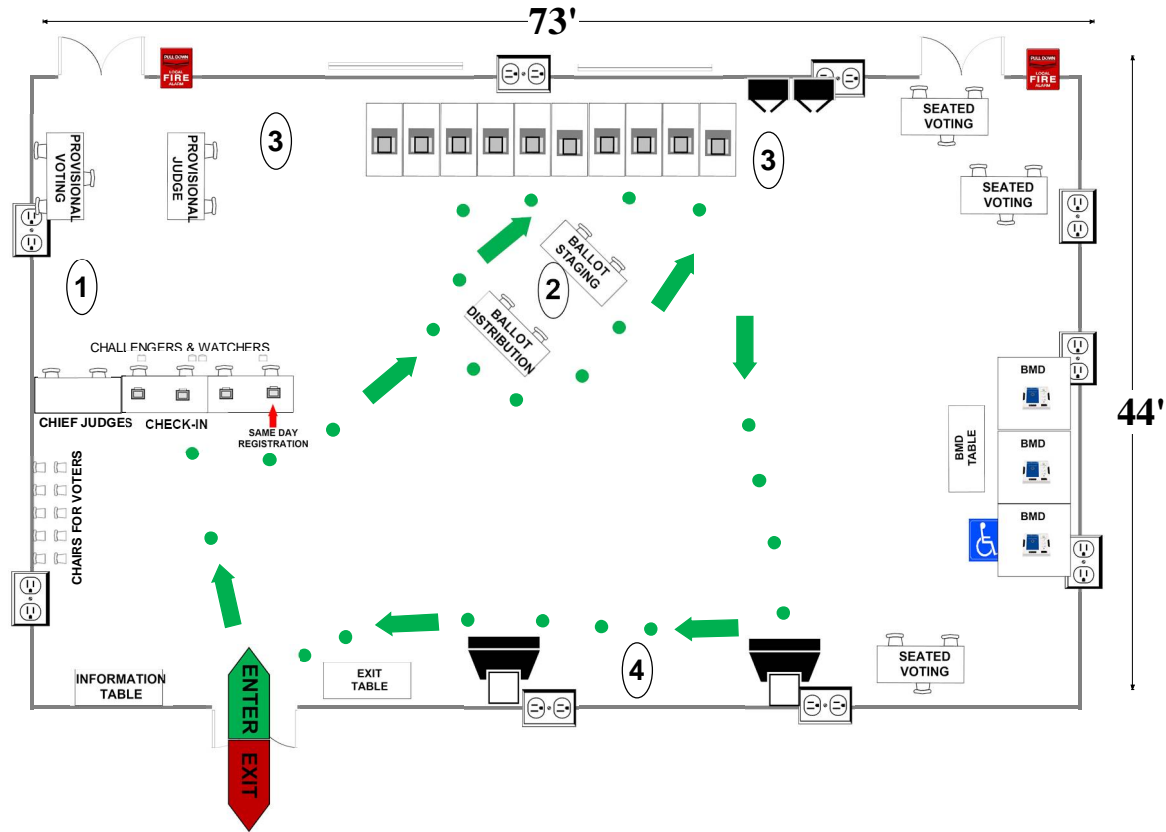
10/4/2024

07-03 Clara Barton Community Center
 7425 MacArthur Blvd.
 Cabin John, MD 20818

SOCIAL ROOM

RECOMMENDED ROOM LAYOUT

- | | |
|-----------|---------------|
| 10 | Voting Booths |
| 9 | Seated Voting |
| 4 | Poll Books |
| 3 | BMDs |
| 2 | Scanners |



- | | | | | | |
|--|--|--|---|--|----------------|
| | 6'X2 1/2' Table | | Ballot Marking Device | | 1 Voter Travel |
| | Voting Booths with 2 1/2'X5' clearance | | Vending Machine | | 2 plug outlet |
| | Transfer Cart | | Electronic Poll Book | | Fire alarm |
| | Window | | Scanner | | |
| | | | Scanner Judge stands
2 - 3 feet from scanner | | |

Montgomery County
 Board of Elections

9/6/2024

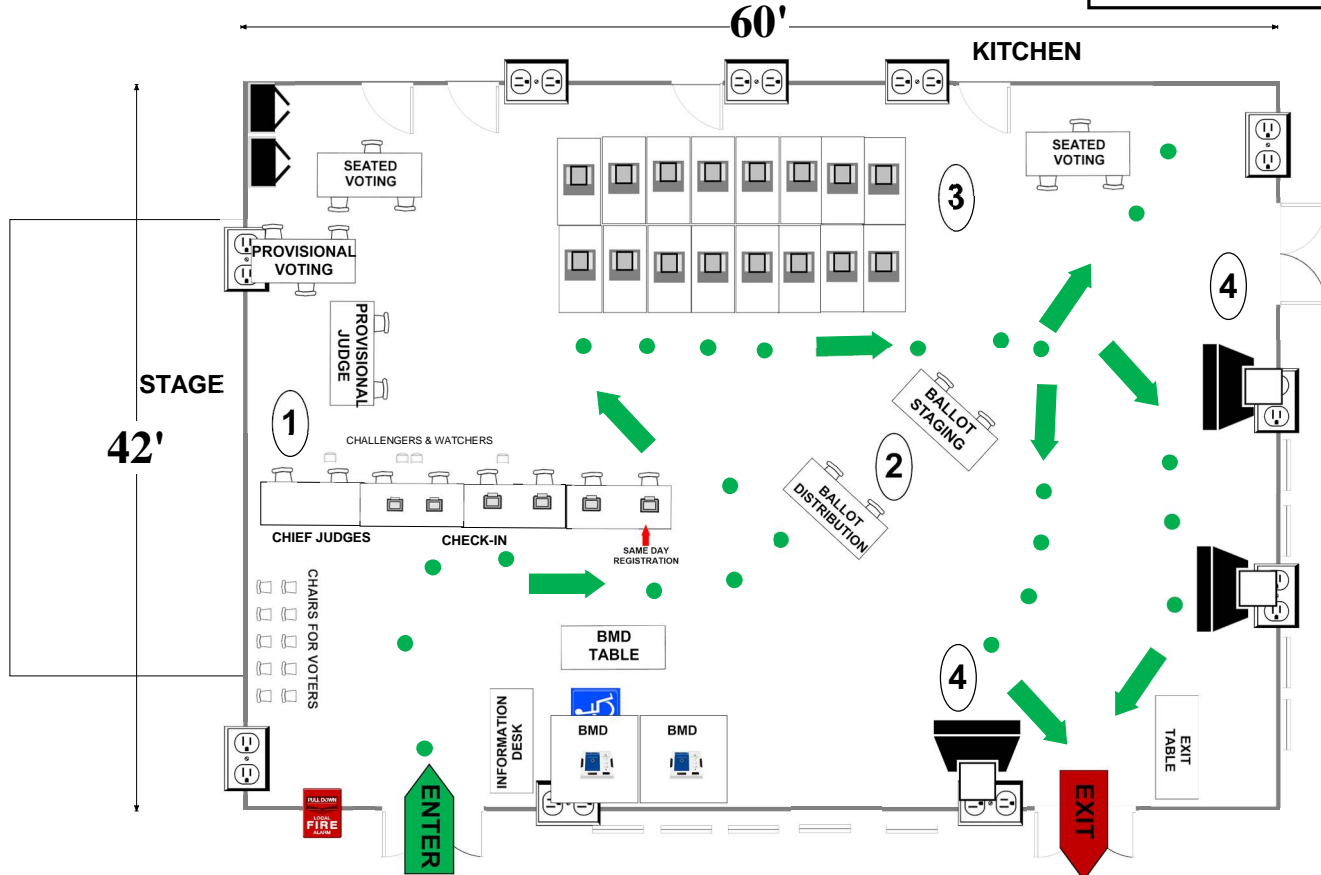
07-04 Bethesda Elementary School

7600 Arlington Road
Bethesda, MD 20814

ALL-PURPOSE ROOM

RECOMMENDED ROOM LAYOUT

- | | |
|-----------|---------------|
| 16 | Voting Booths |
| 6 | Seated Voting |
| 6 | Poll Books |
| 2 | BMDs |
| 3 | Scanners |



- | | | | | | |
|--|--|--|-----------------------|----------|---------------|
| | 6'X2 1/2' Table | | Ballot Marking Device | 1 | Voter Travel |
| | Voting Booths with 2 1/2'X5' clearance | | Vending Machine | | 2 plug outlet |
| | Transfer Cart | | Electronic Poll Book | | Fire alarm |
| | Window | | Scanner | | |
- Scanner Judge stands
2 - 3 feet from scanner**

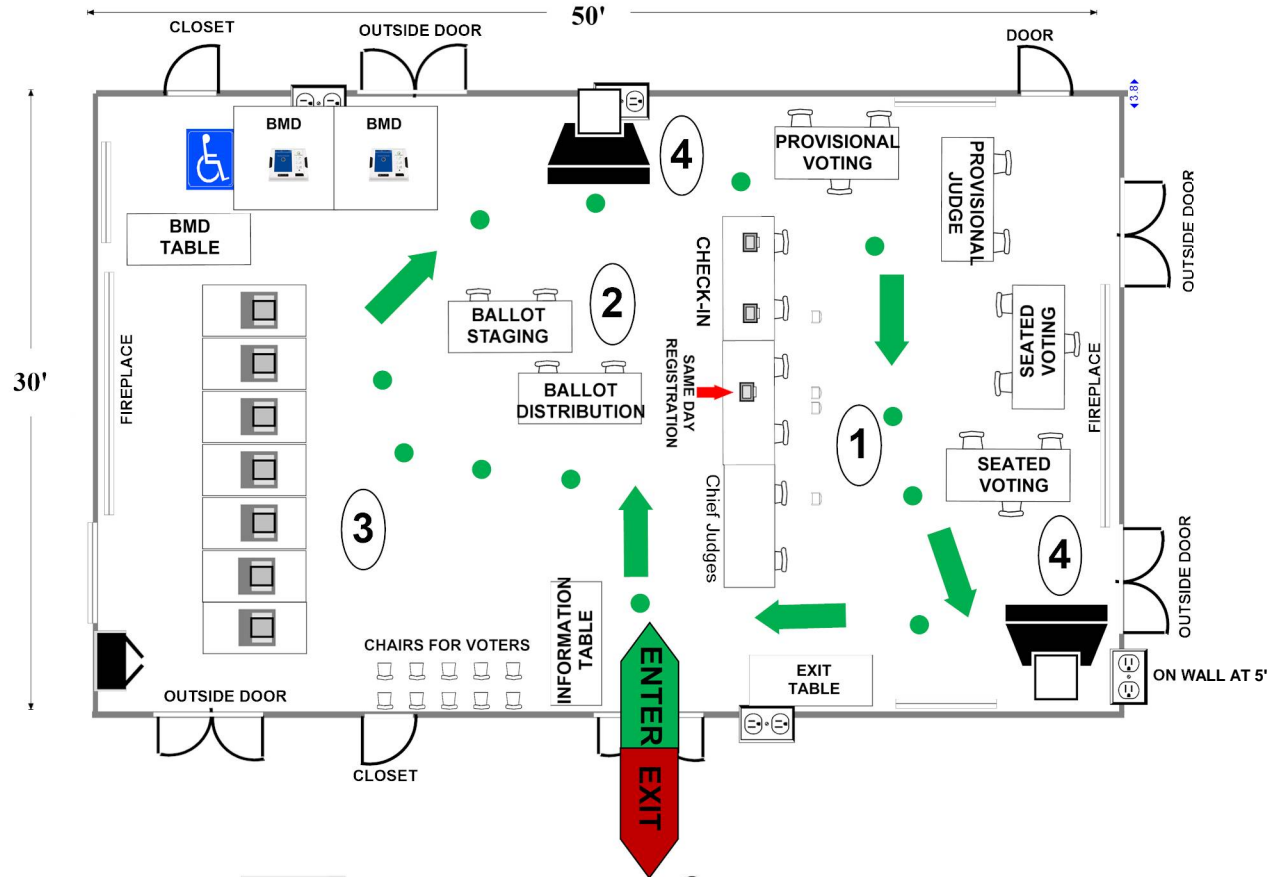
Montgomery County
Board of Elections
10/4/2024

07-05 Meadowbrook Local Park

7901 Meadowbrook Lane
Chevy Chase, MD 20815

RECOMMENDED ROOM LAYOUT

MAIN ROOM



- 7** Voting Booths
- 6** Seated Voting
- 3** Poll Books
- 2** BMDs
- 2** Scanners

- 6'X2 1/2' Table
- Voting Booths with 2 1/2 X 5' clearance
- Transfer Cart
- Window
- Ballot Marking Device
- Vending Machine
- Electronic Poll Book
- Scanner
- Scanner Judge stands**
2 - 3 feet from scanner
- 1 Voter Travel
- 2 plug outlet
- Fire alarm
- Column

Montgomery County
Board of Elections

9/6/2024

07-06 Chevy Chase Elementary School

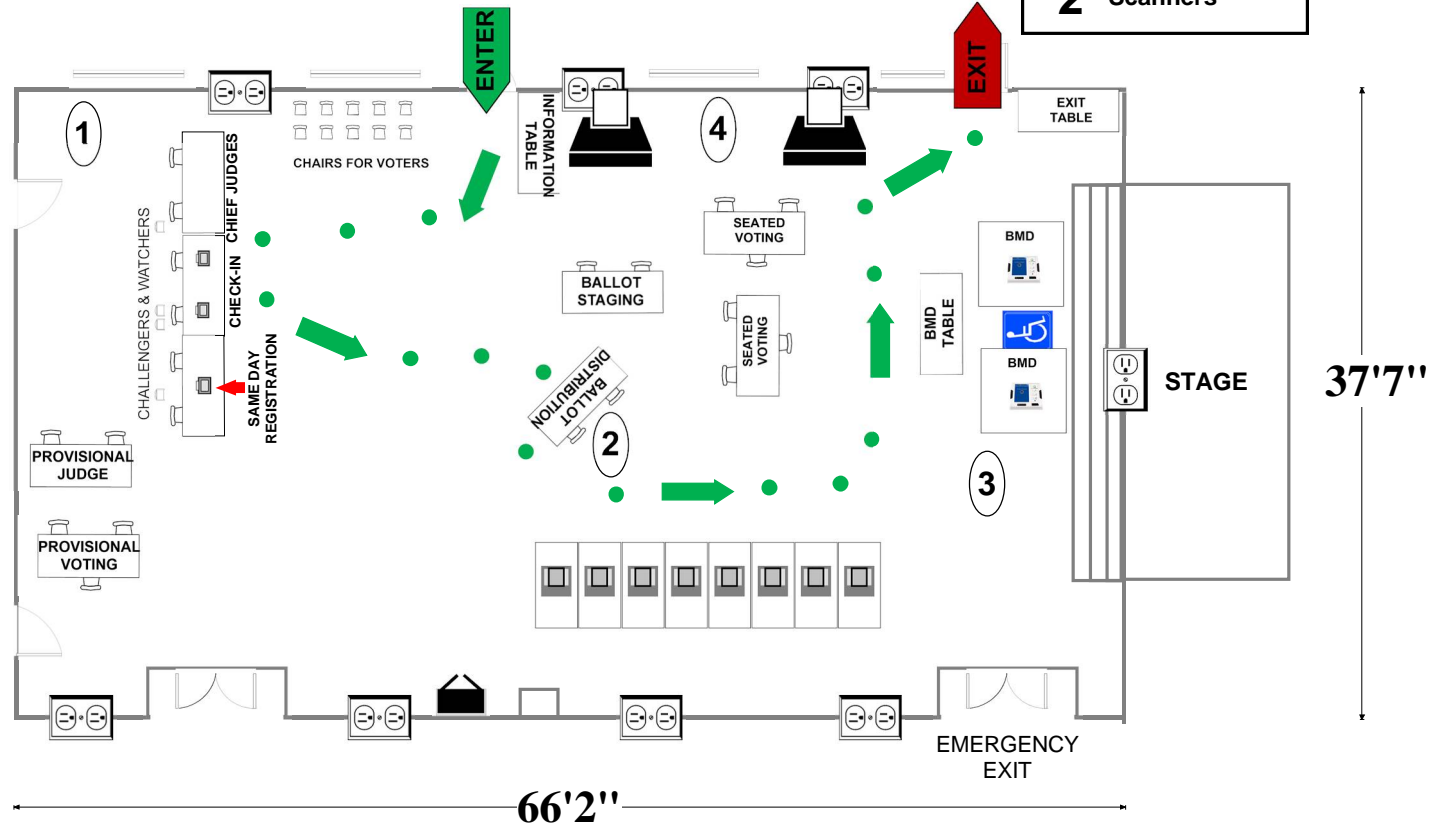
4015 Rosemary St.

Chevy Chase, MD 20815

RECOMMENDED ROOM LAYOUT

ALL-PURPOSE ROOM

- 8** Voting Booths
- 6** Seated Voting
- 3** Poll Books
- 2** BMDs
- 2** Scanners



- 6'X2 1/2' Table
- Voting Booths with 2 1/2'X5' clearance
- Transfer Cart
- Window
- Ballot Marking Device
- Vending Machine
- Electronic Poll Book
- Scanner
- Scanner Judge stands
2 - 3 feet from scanner**
- 1 Voter Travel
- 2 plug outlet
- Fire alarm

Montgomery County
Board of Elections
9/6/2024

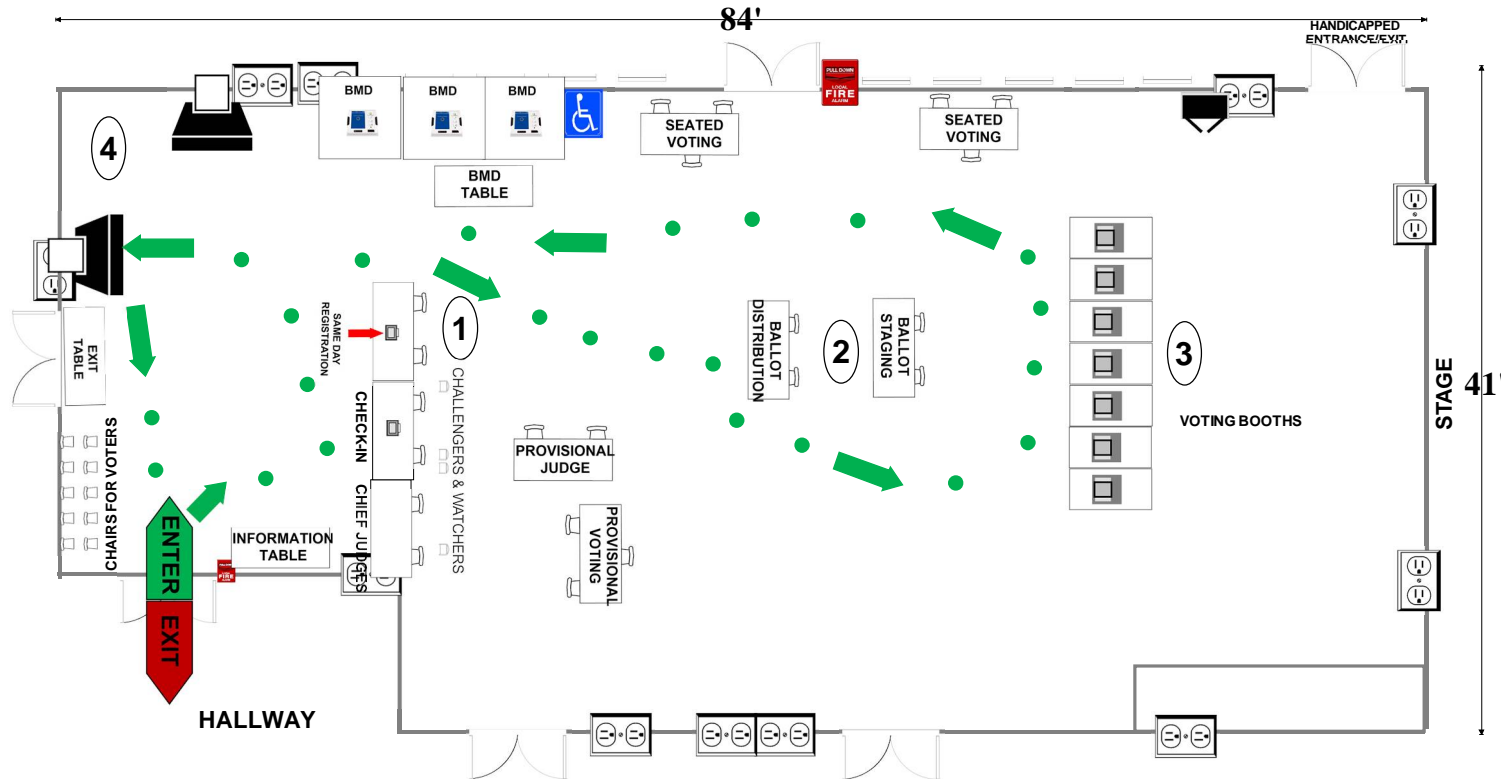
07-07 Westbrook Elementary School






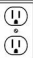





5110 Allan Ter
Bethesda, MD 20816

RECOMMENDED ROOM LAYOUT

ALL-PURPOSE
ROOM

- 7** Voting Booths
- 6** Seated Voting
- 2** Poll Books
- 3** BMDs
- 2** Scanners



-  6'x2 1/2' Table
-  Ballot Marking Device
-  1 Voter Travel
-  Voting Booths with 2 1/2'x5' clearance
-  Vending Machine
-  2 plug outlet
-  Transfer Cart
-  Electronic Poll Book
-  Scanner
-  Fire alarm
-  Window
- Scanner Judge stands**
2 - 3 feet from scanner

Montgomery County
Board of Elections

9/6/2024

07-10 St Jane Frances de Chantal Catholic Church

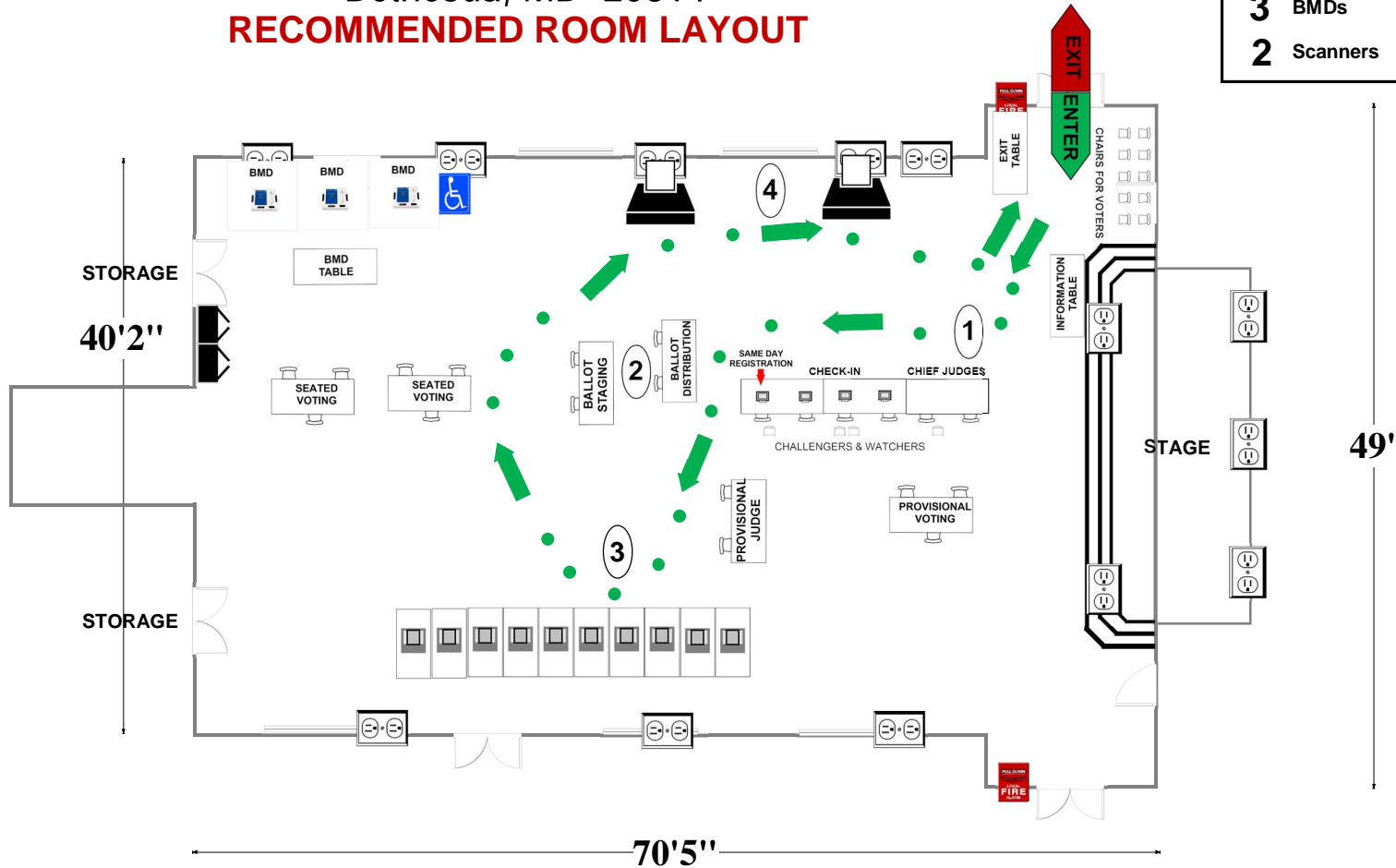
9601 Old Georgetown Rd

Bethesda, MD 20814

CAULFIELD HALL

RECOMMENDED ROOM LAYOUT

- | | |
|-----------|---------------|
| 10 | Voting Booths |
| 6 | Seated Voting |
| 4 | Poll Books |
| 3 | BMDs |
| 2 | Scanners |



- | | | | | | |
|--|--|--------------------------------|-----------------------|--|---------------|
| | 6'X2 1/2' Table | | Ballot Marking Device | | Voter Travel |
| | Voting Booths with 2 1/2' X 5' clearance | | Vending Machine | | 2 plug outlet |
| | Transfer Cart | | Electronic Poll Book | | Fire alarm |
| | Window | | Scanner | | |
| | | Scanner Judge stands | | | |
| | | 2 - 3 feet from scanner | | | |

Montgomery County
Board of Elections
9/6/2024

07-11 Somerset Elementary School

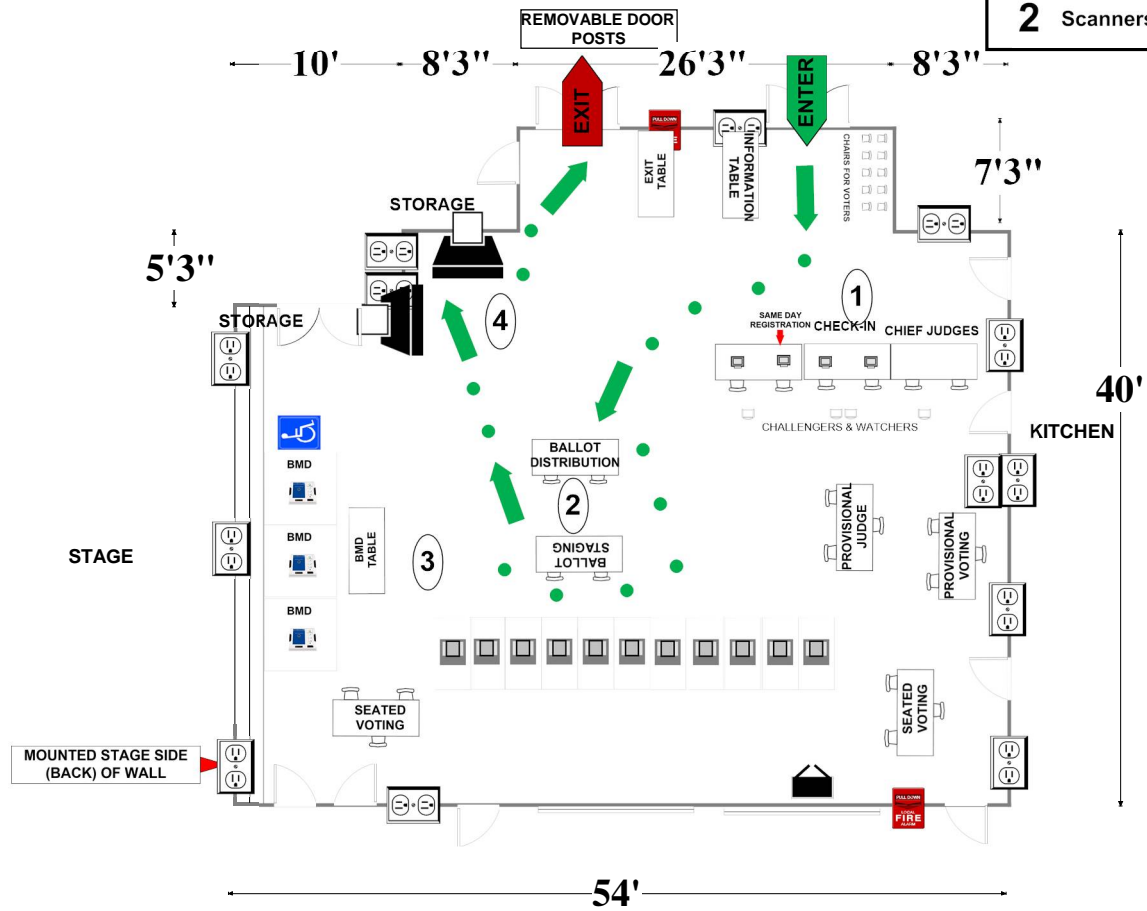
5811 Warwick Place

Chevy Chase, MD 20815

RECOMMENDED ROOM LAYOUT

ALL-PURPOSE ROOM

- 11** Voting Booths
- 6** Seated Voting
- 4** Poll Books
- 3** BMDs
- 2** Scanners



- 6'x2 1/2' Table
- Voting Booths with 2 1/2'x5' clearance
- Transfer Cart
- Window
- BMD
- Vending Machine
- Electronic Poll Book
- Scanner
- Scanner Judge stands**
2 - 3 feet from scanner
- 1 Voter Travel
- 2 plug outlet
- Fire alarm

Montgomery County
Board of Elections

9/6/2024

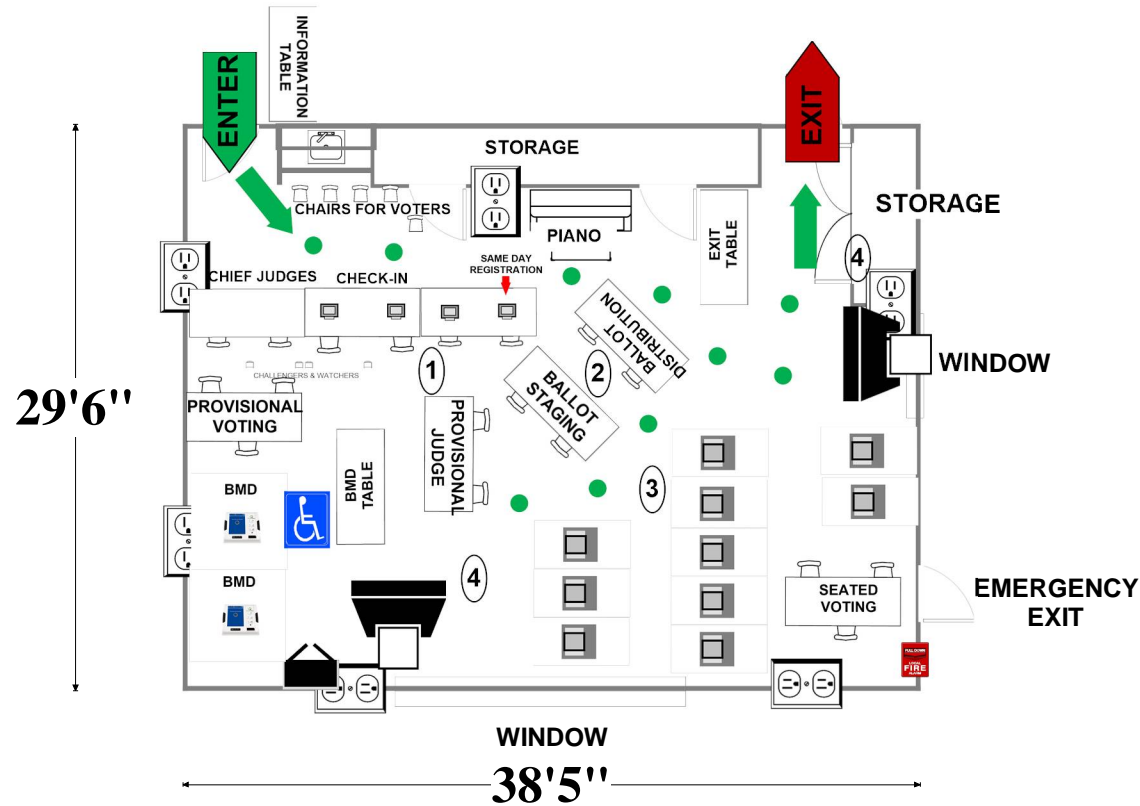
07-12 Connie Morella Library

7400 Arlington Road
Bethesda, MD 20814

MEETING ROOM

RECOMMENDED ROOM LAYOUT

- | | |
|-----------|---------------|
| 10 | Voting Booths |
| 3 | Seated Voting |
| 4 | Poll Books |
| 2 | BMDs |
| 2 | Scanners |



- | | | | | | |
|--|--|--------------------------------|----------------------|--|---------------|
| | 6'X2 1/2' Table | | BMD | | Voter Travel |
| | Voting Booths with 2 1/2'X5' clearance | | Vending Machine | | 2 plug outlet |
| | Transfer Cart | | Electronic Poll Book | | Fire alarm |
| | Window | | Scanner | | |
| | | Scanner Judge stands | | | |
| | | 2 - 3 feet from scanner | | | |

Montgomery County
Board of Elections

9/6/2024

07-13 Westland Middle School

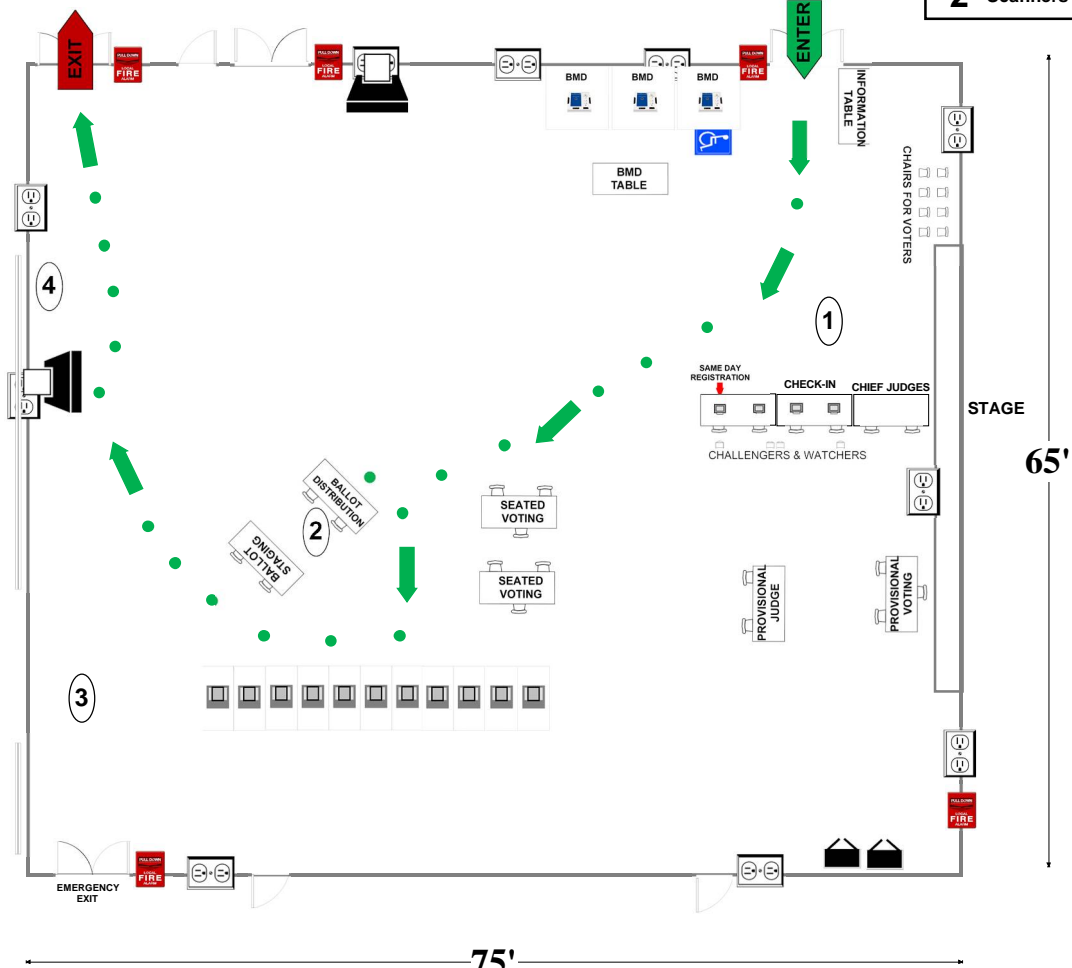
5511 Massachusetts Ave.

Bethesda, MD 20816

RECOMMENDED ROOM LAYOUT

CAFETERIA

- | | |
|----|---------------|
| 11 | Voting Booths |
| 6 | Seated Voting |
| 4 | Poll Books |
| 3 | BMDs |
| 2 | Scanners |



- | | | | | | |
|--|--|--|-----------------------|--|---------------|
| | 6'X2 1/2' Table | | Ballot Marking Device | | Voter Travel |
| | Voting Booths with 2 1/2'X5' clearance | | Vending Machine | | 2 plug outlet |
| | Scanner | | Electronic Poll Book | | Fire alarm |
| | Window | | Black Transfer Cart | | |

Montgomery County
Board of Elections

9/6/2024

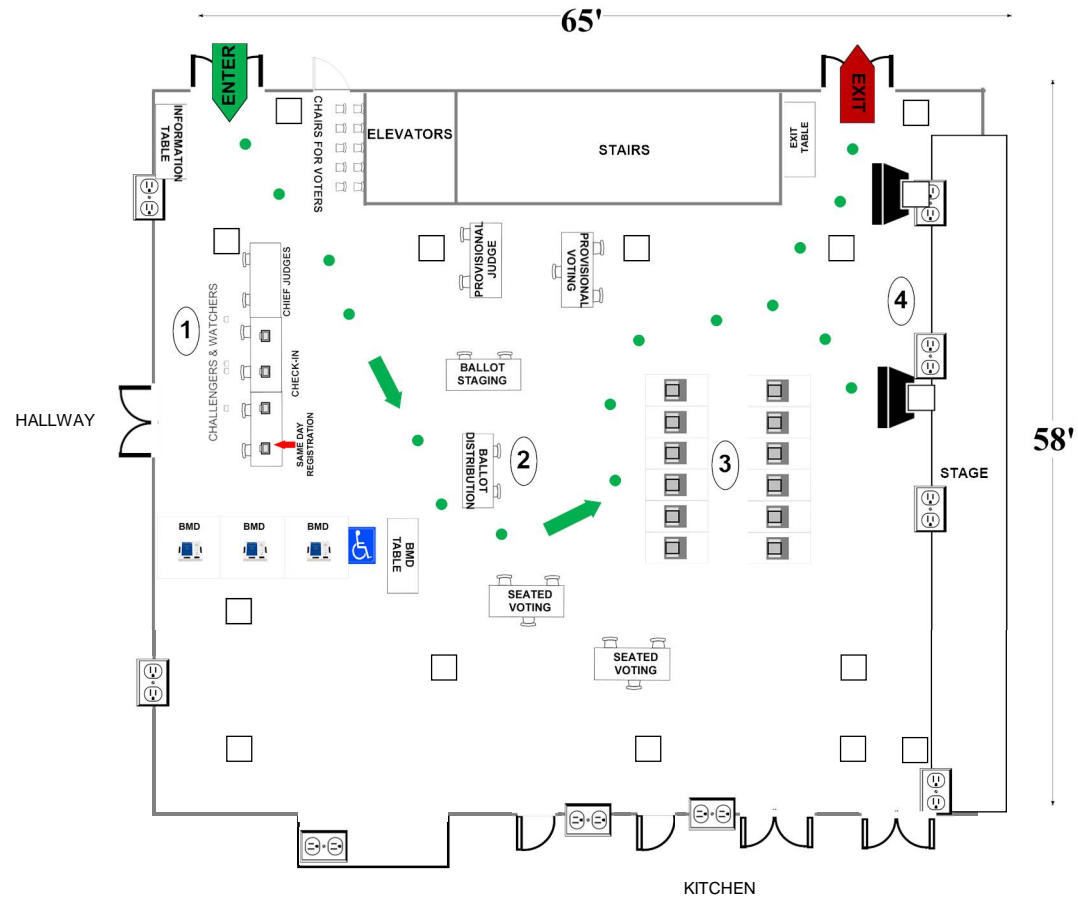
07-15 Thomas W. Pyle Middle School

6311 Wilson Ln
Bethesda, MD 20817

CAFETERIA

RECOMMENDED ROOM LAYOUT

- | | |
|----|---------------|
| 12 | Voting Booths |
| 6 | Seated Voting |
| 4 | Poll Books |
| 3 | BMDs |
| 2 | Scanners |



- | | | | | | |
|--|--|--|---|--|----------------|
| | 6'x2 1/2' Table | | Ballot Marking Device | | 1 Voter Travel |
| | Voting Booths with 2 1/2'x5' clearance | | Vending Machine | | 2 plug outlet |
| | Transfer Cart | | Electronic Poll Book | | Fire alarm |
| | Window | | Scanner | | |
| | | | Scanner Judge stands
2 - 3 feet from scanner | | |

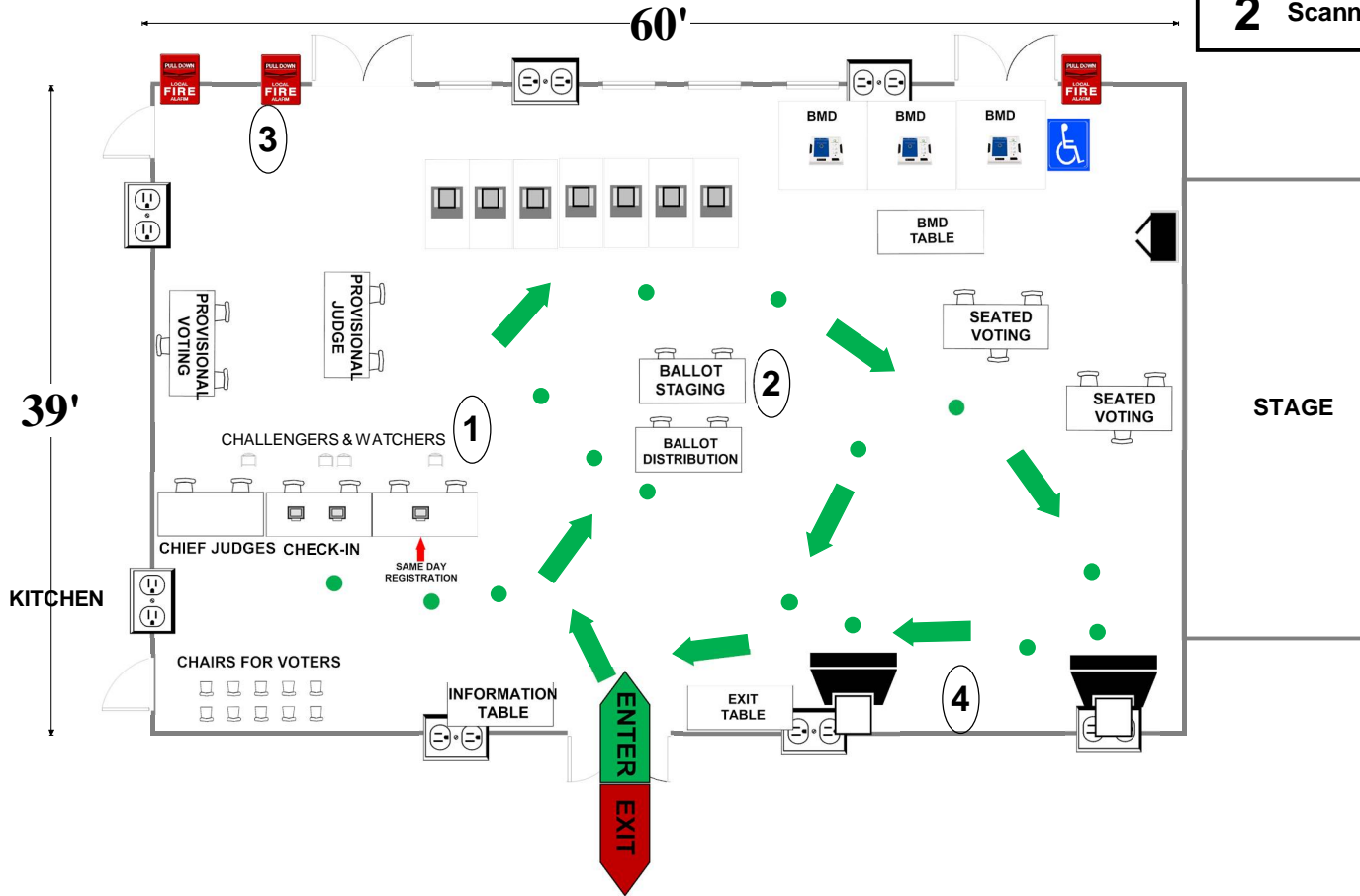
07-16 North Chevy Chase Elementary School

3700 Jones Bridge Rd
Chevy Chase, MD 20815

RECOMMENDED ROOM LAYOUT

ALL-PURPOSE ROOM

- 7** Voting Booths
- 6** Seated Voting
- 3** Poll Books
- 3** BMDs
- 2** Scanners



- 6'X2 1/2' Table
- Voting Booths with 2 1/2'X5' clearance
- Transfer Cart
- Window
- Ballot Marking Device
- Vending Machine
- Electronic Poll Book
- Scanner
- Scanner Judge stands**
2 - 3 feet from scanner
- 1 Voter Travel
- 2 plug outlet
- Fire alarm

Montgomery County
Board of Elections

9/6/2024

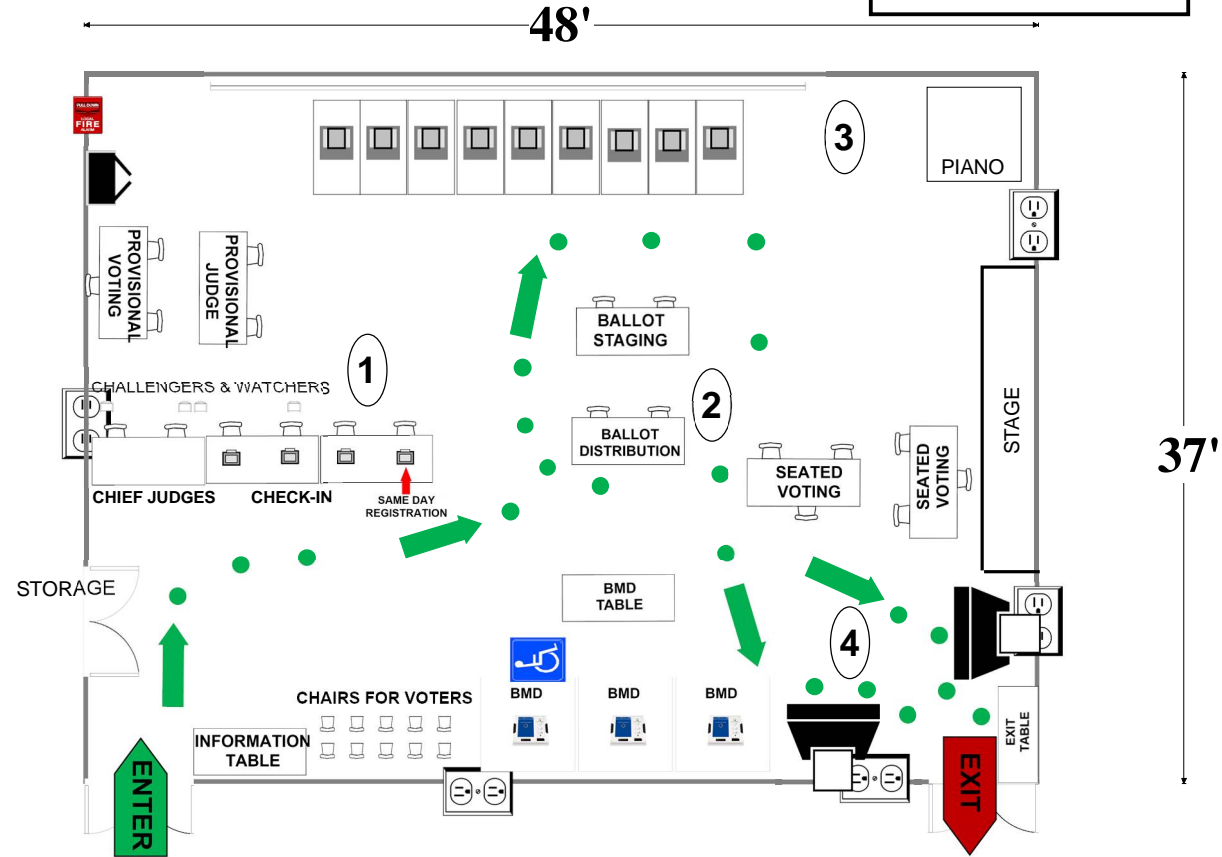
07-18 Washington Waldorf School

4800 Sangamore Rd
Bethesda, MD 20816

ALL-PURPOSE ROOM

RECOMMENDED ROOM LAYOUT

- 9** Voting Booths
- 6** Seated Voting
- 4** Poll Books
- 3** BMDs
- 2** Scanners



- 6'X2 1/2' Table
- Voting Booths with 2 1/2'X5' clearance
- Transfer Cart
- Window
- BMD Ballot Marking Device
- Vending Machine
- Electronic Poll Book
- Scanner
- Scanner Judge stands**
2 - 3 feet from scanner
- 1 Voter Travel
- 2 plug outlet
- Fire alarm

Montgomery County
Board of Elections

9/6/2024

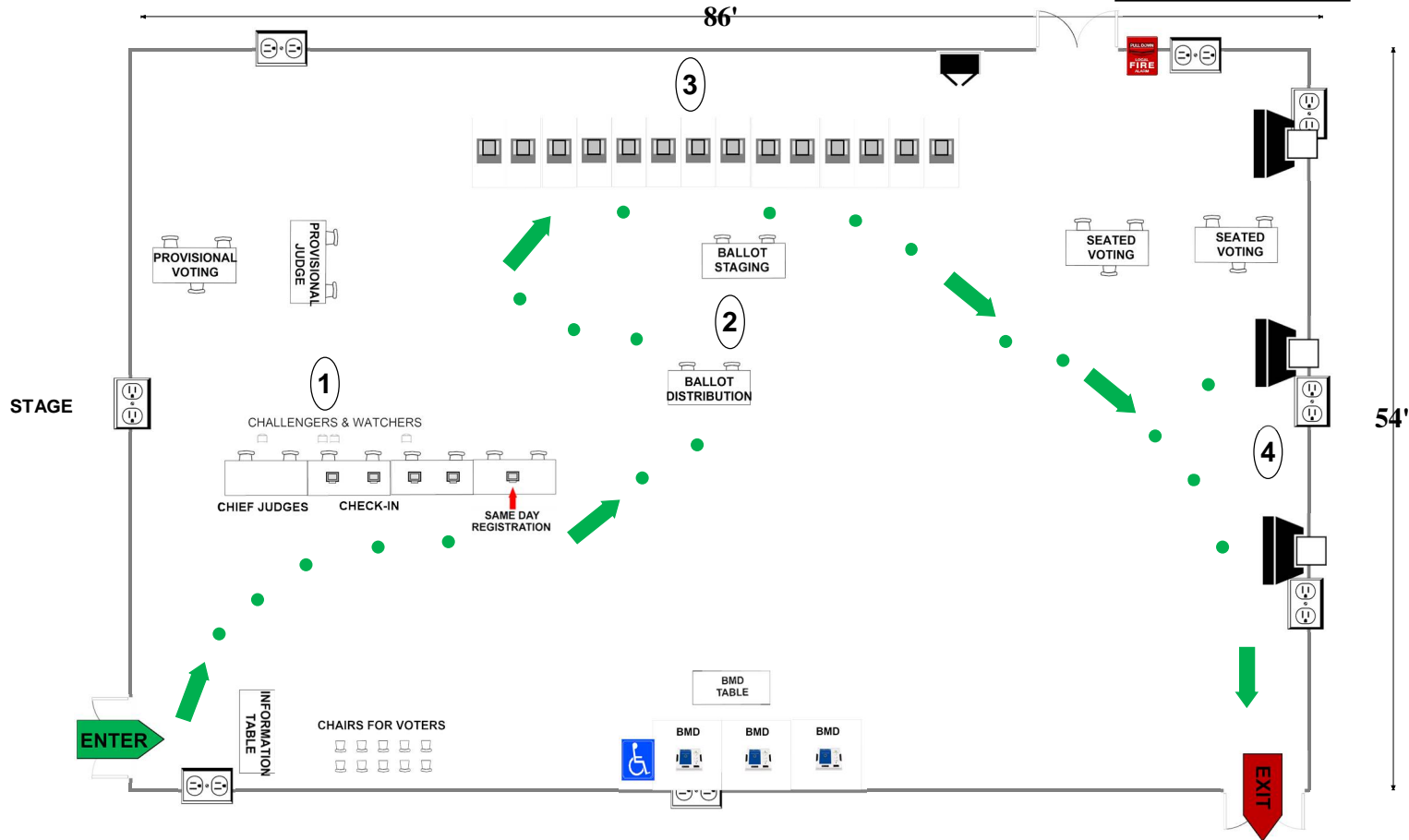
07-19 North Bethesda Middle School

8935 Bradmoor Dr
Bethesda, MD 20817

GYM

RECOMMENDED ROOM LAYOUT

- 14** Voting Booths
- 6** Seated Voting
- 5** Poll Books
- 3** BMDs
- 3** Scanners



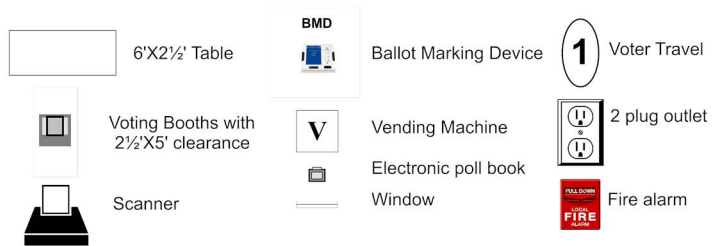
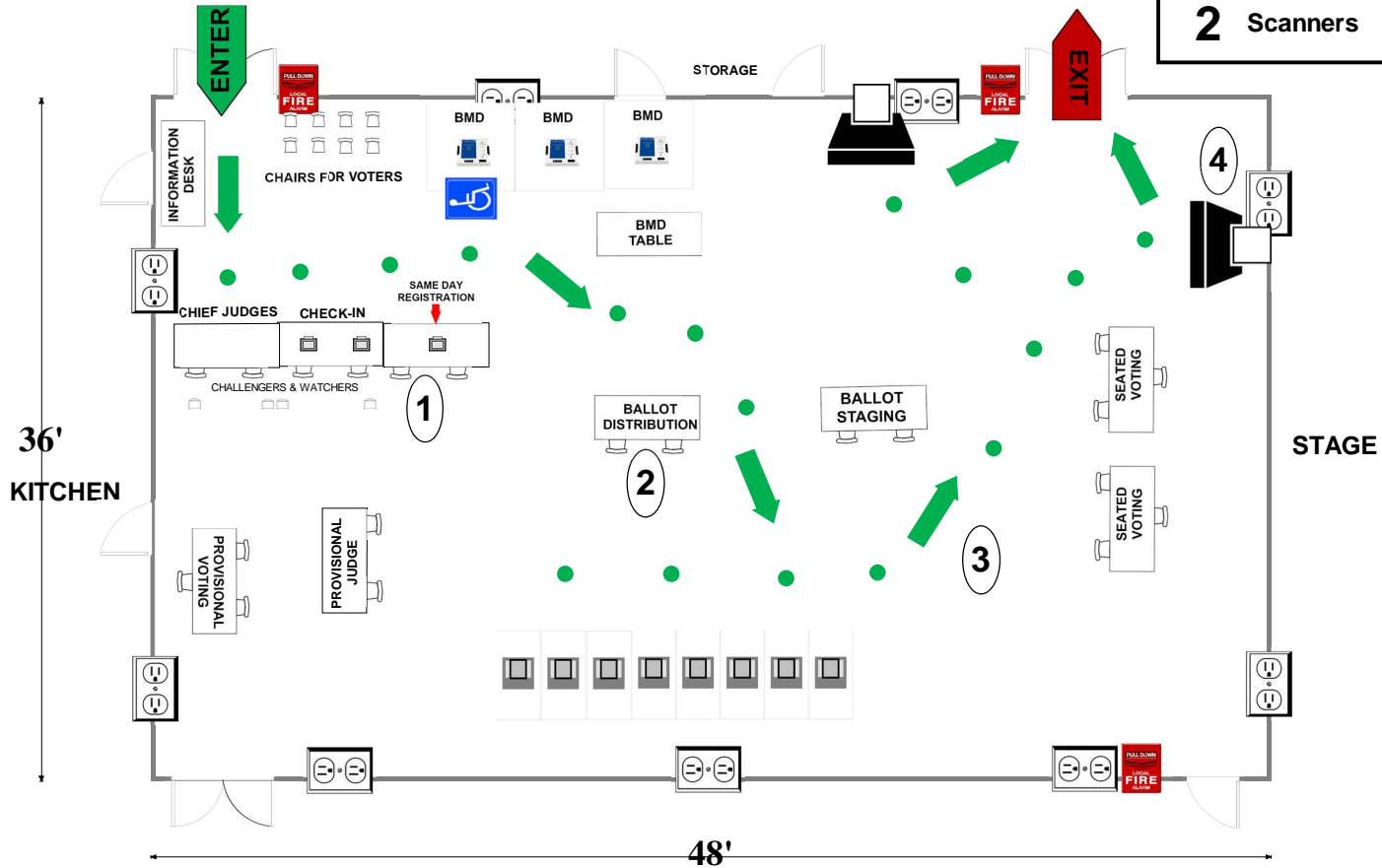
- 6'X2 1/2' Table
- Voting Booths with 2 1/2'X5' clearance
- Scanner
- Window
- BMD Ballot Marking Device
- Vending Machine
- Electronic Poll Book
- Black Transfer Cart
- 1 Voter Travel
- 2 plug outlet
- Fire alarm

Montgomery County
Board of Elections
10/4/2024

07-20 Ashburton Elementary School
 6314 Lone Oak Dr
 Bethesda, MD 20817
RECOMMENDED ROOM LAYOUT

ALL-PURPOSE ROOM

- 8** Voting Booths
- 6** Seated Voting
- 3** Poll Books
- 3** BMDs
- 2** Scanners



Montgomery County
 Board of Elections
 9/9/2024

07-21 Chevy Chase United Methodist Church

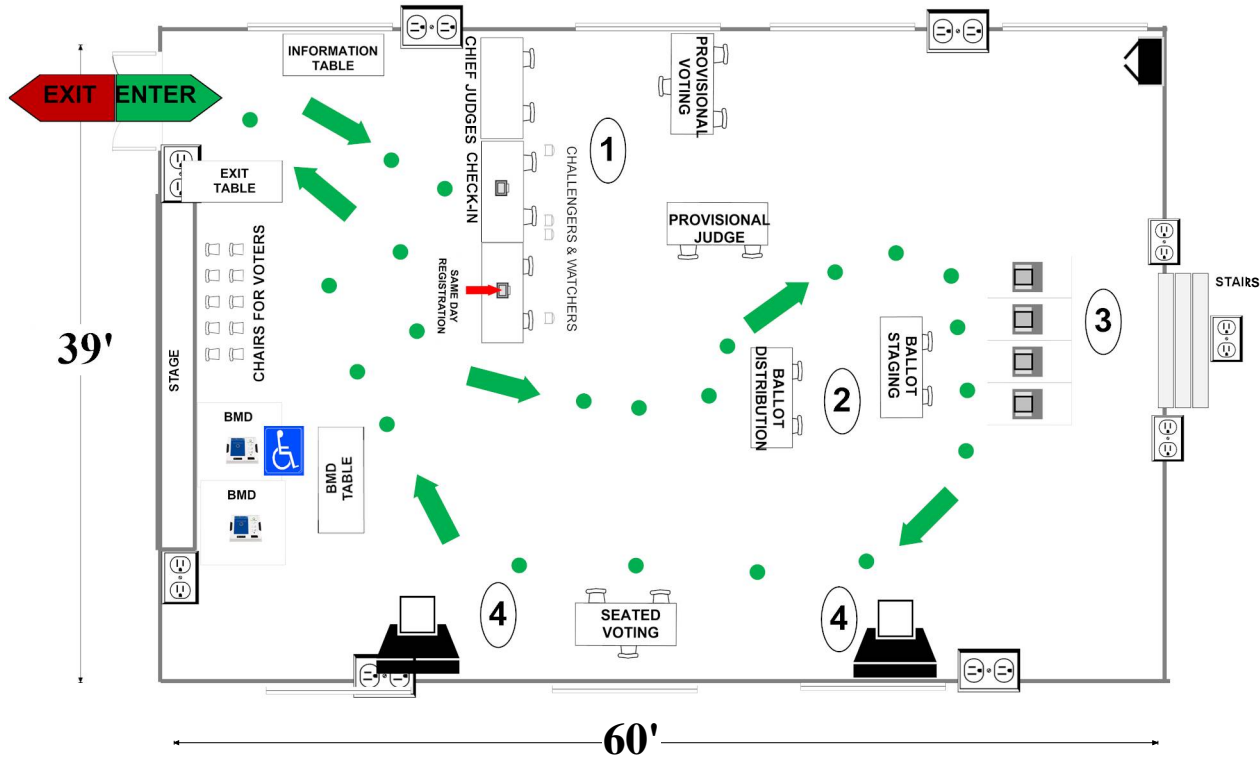
7001 Connecticut Ave


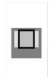









Chevy Chase, MD 20815

RECOMMENDED ROOM LAYOUT

PHILLIPS HALL

- 4** Voting Booths
- 3** Seated Voting
- 2** Poll Books
- 2** BMDs
- 2** Scanners



-  6'X2 1/2' Table
-  Voting Booths with 2 1/2'X5' clearance
-  Transfer Cart
-  Window
-  Ballot Marking Device
-  Vending Machine
-  Electronic Poll Book
-  Scanner
- Scanner Judge stands
2 - 3 feet from scanner**
-  1 Voter Travel
-  2 plug outlet
-  Fire alarm

Montgomery County
Board of Elections

10/4/2024

07-22 Bannockburn Elementary School

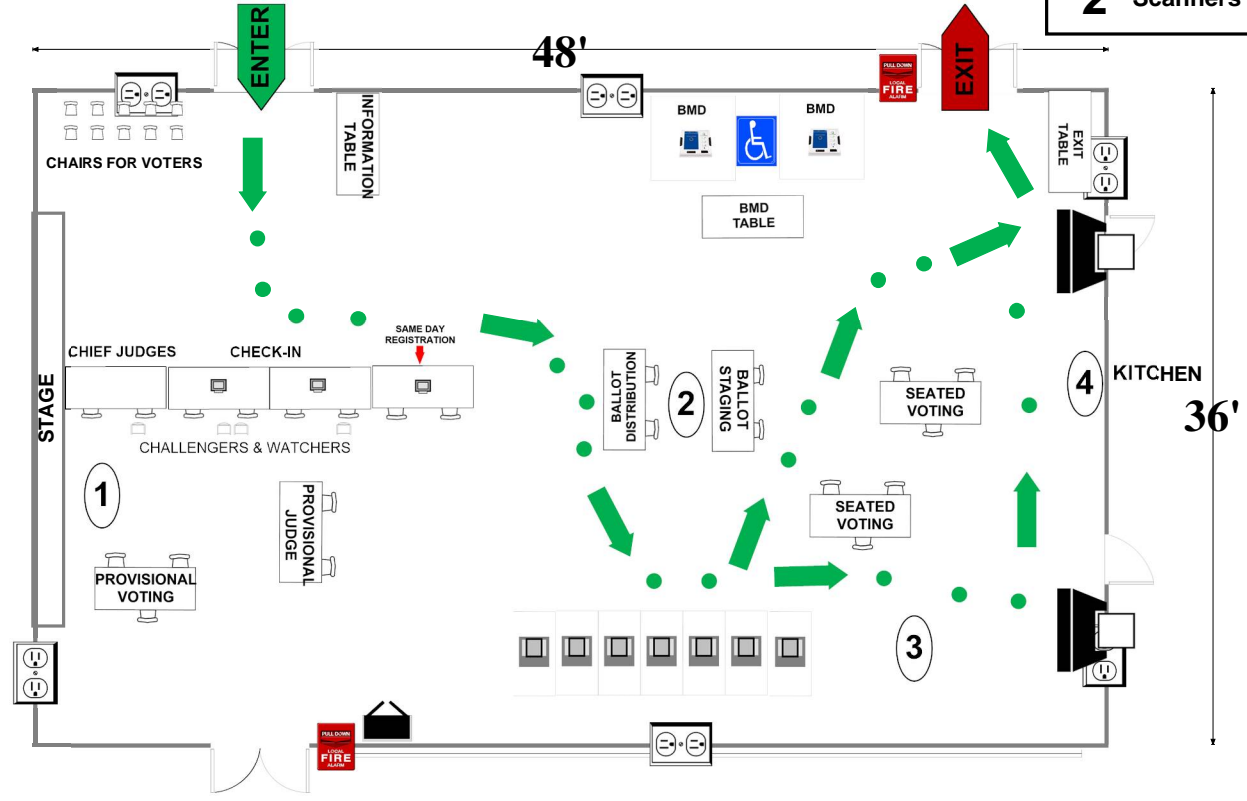
6520 Dalroy Lane

Bethesda, MD 20817

RECOMMENDED ROOM LAYOUT

ALL-PURPOSE ROOM

- 7** Voting Booths
- 6** Seated Voting
- 3** Poll Books
- 2** BMDs
- 2** Scanners



	6'X2 1/2' Table		Ballot Marking Device		Voter Travel
	Voting Booths with 2 1/2'X5' clearance		Vending Machine		2 plug outlet
	Transfer Cart		Electronic Poll Book		Fire alarm
	Window		Scanner		

**Scanner Judge stands
2 - 3 feet from scanner**

Montgomery County
Board of Elections
10/11/2024

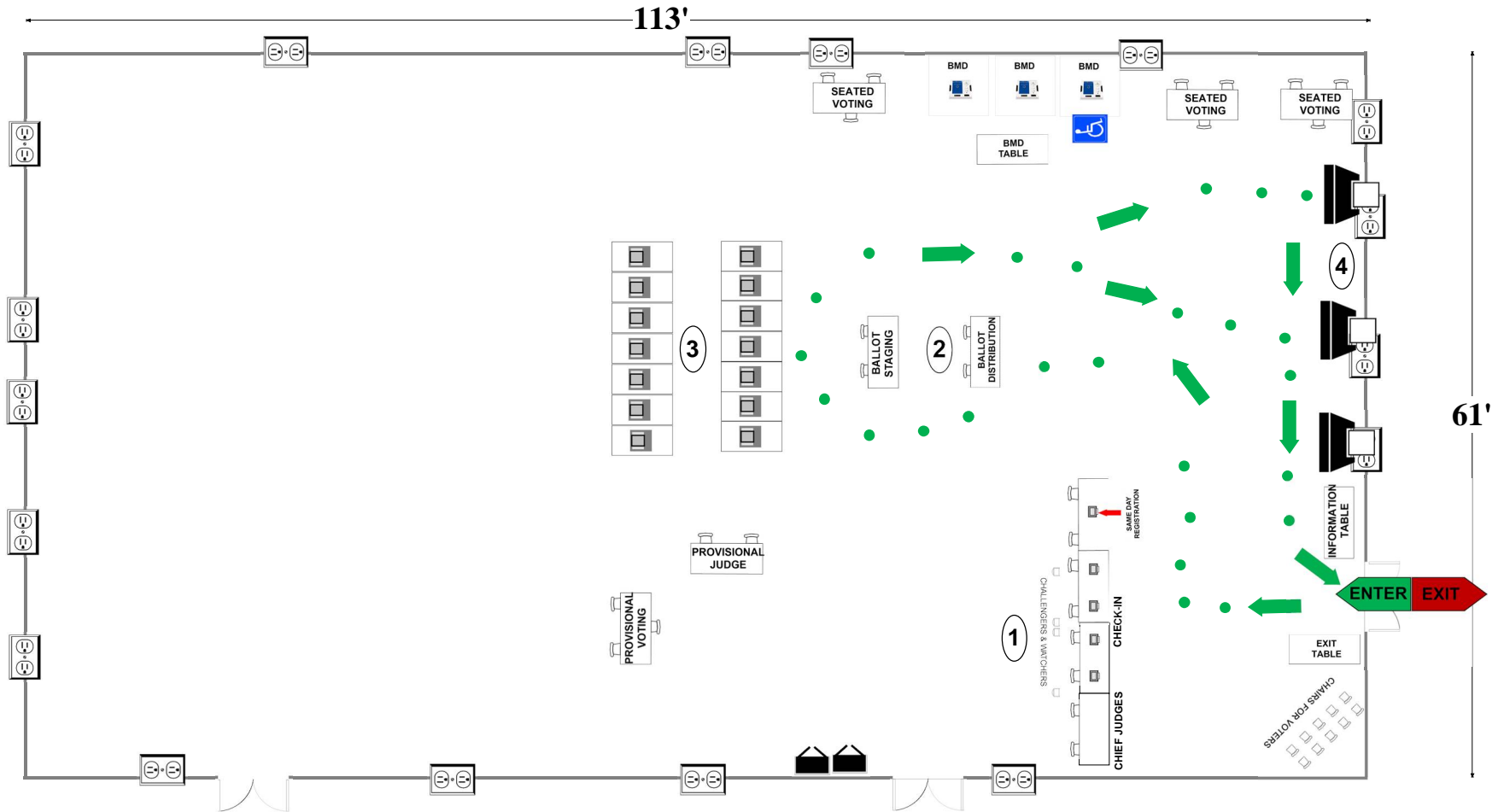
07-23 Walt Whitman High School

7100 Whittier Blvd.
Bethesda, MD 20817

SMALL GYM

RECOMMENDED ROOM LAYOUT

- 14** Voting Booths
- 9** Seated Voting
- 5** Poll Books
- 3** BMDs
- 3** Scanners



- 6'X2½' Table
- Voting Booths with 2½'X5' clearance
- Transfer Cart
- Window
- Ballot Marking Device
- Vending Machine
- Electronic Poll Book
- Scanner
- Scanner Judge stands**
2 - 3 feet from scanner
- 1** Voter Travel
- 2 plug outlet
- Fire alarm

Montgomery County
Board of Elections

10/11/2024

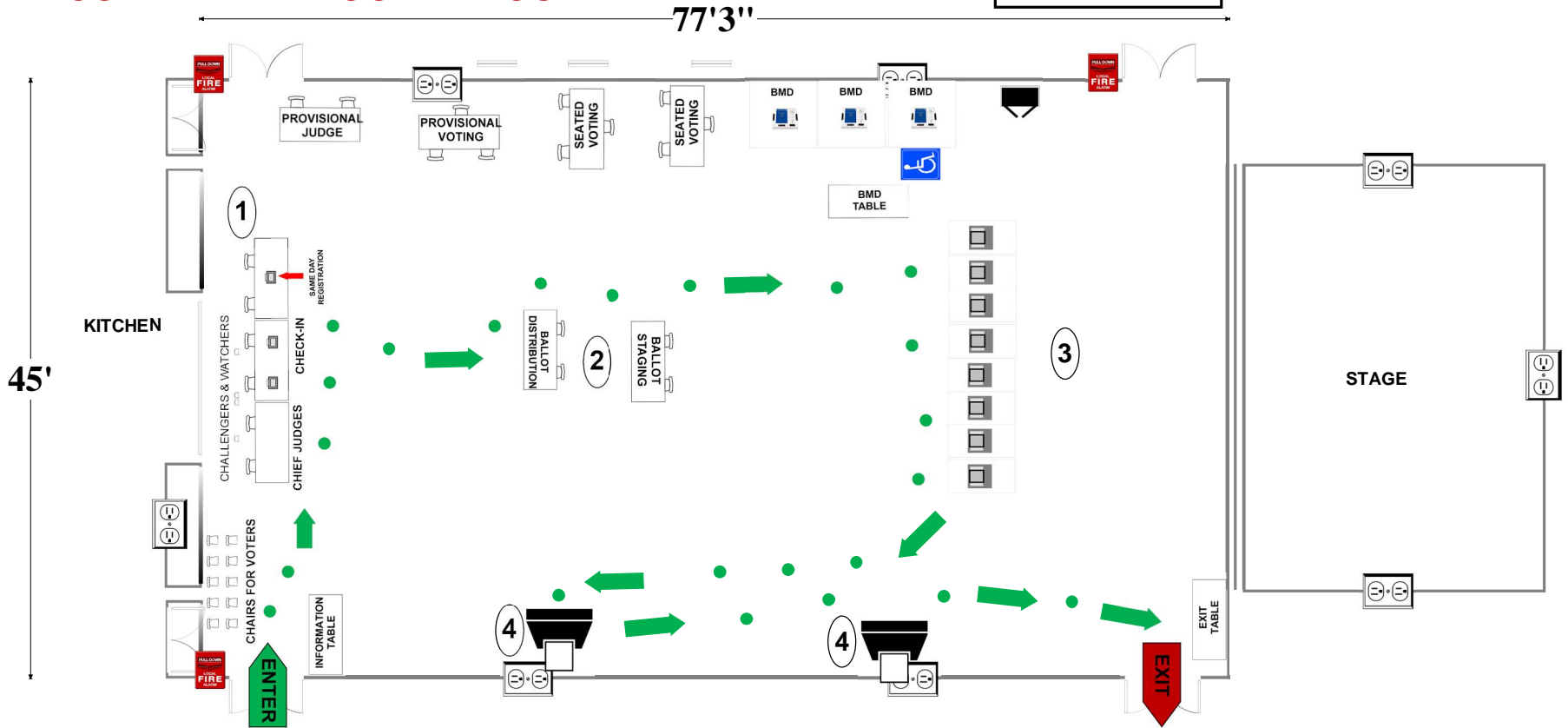
07-24 Little Flower School Hall

5601 Massachusetts Ave
Bethesda, MD 20816

PARISH HALL

RECOMMENDED ROOM LAYOUT

- 8** Voting Booths
- 6** Seated Voting
- 3** Poll Books
- 3** BMDs
- 2** Scanners



- 6'X2 1/2' Table
 - Voting Booths with 2 1/2'X5' clearance
 - Transfer Cart
 - Window
 - Ballot Marking Device
 - Vending Machine
 - Electronic Poll Book
 - Scanner
 - 1 Voter Travel
 - 2 plug outlet
 - Fire alarm
- Scanner Judge stands
2 - 3 feet from scanner**

Montgomery County
Board of Elections
9/9/2024

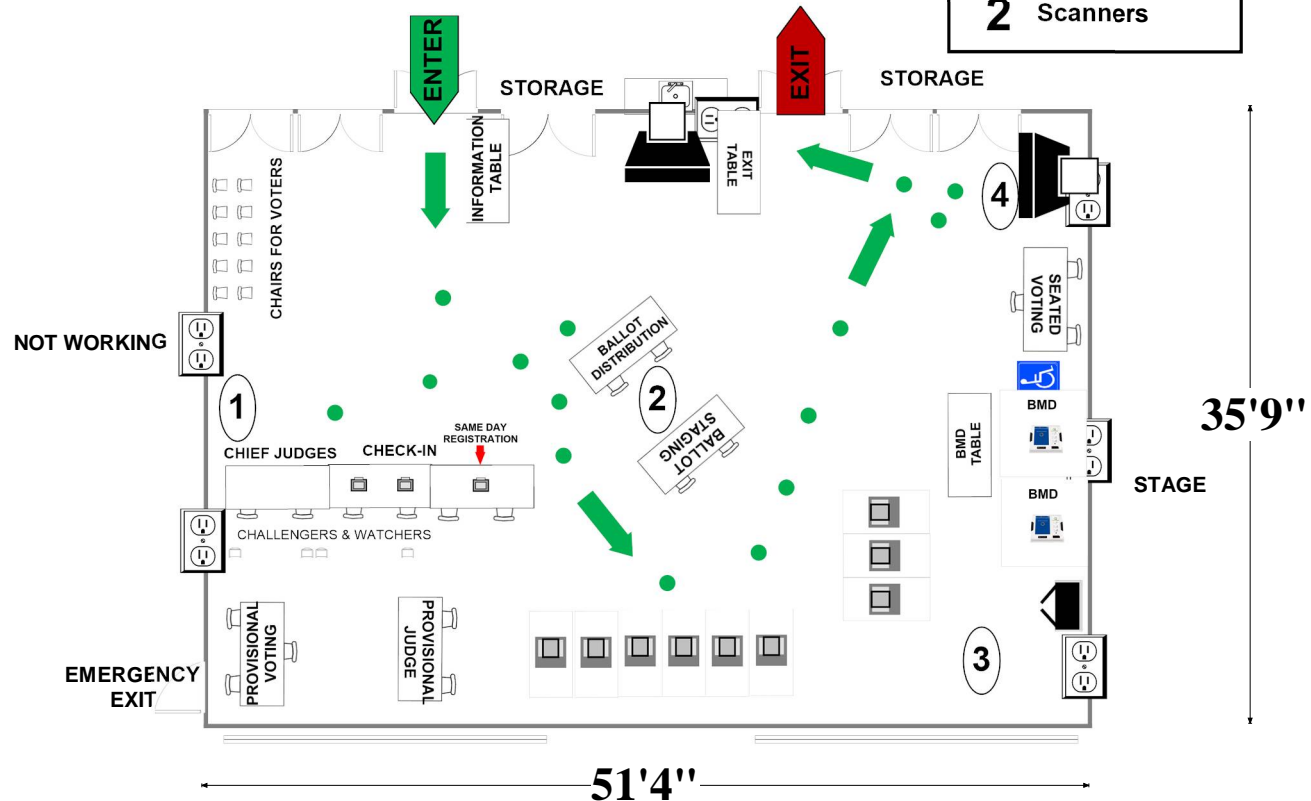
07-25 Grosvenor School Center

5701 Grosvenor Lane
Bethesda, MD 20814

RECOMMENDED ROOM LAYOUT

ALL-PURPOSE ROOM

- 9** Voting Booths
- 3** Seated Voting
- 3** Poll Books
- 2** BMDs
- 2** Scanners



- 6'X2 1/2' Table
- Voting Booths with 2 1/2'X5' clearance
- Transfer Cart
- Window
- Ballot Marking Device
- Vending Machine
- Electronic Poll Book
- Scanner
- Scanner Judge stands**
2 - 3 feet from scanner
- 1 Voter Travel
- 2 plug outlet
- Fire alarm

Montgomery County
Board of Elections

9/9/2024

07-26 Friendship Heights Village Center

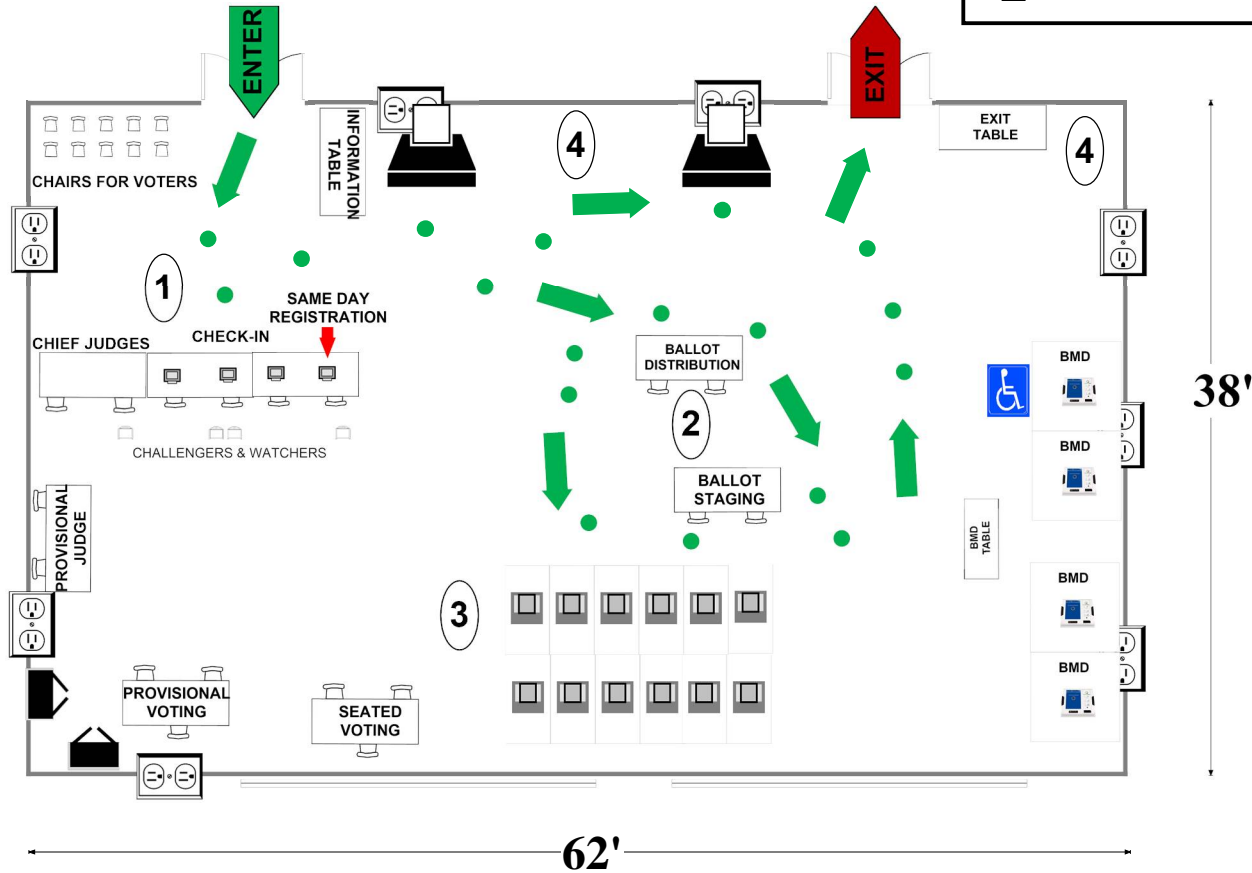
4433 S. Park Ave.

Chevy Chase, MD 20815

RECOMMENDED ROOM LAYOUT

HUNTLEY HALL

- 12** Voting Booths
- 3** Seated Voting
- 4** Poll Books
- 4** BMDs
- 2** Scanners



- 6'X2 1/2' Table
- Voting Booths with 2 1/2'X5' clearance
- Scanner
- Window
- Ballot Marking Device
- Vending Machine
- Electronic Poll Book
- Black Transfer Cart
- Voter Travel
- 2 plug outlet
- Fire alarm

Montgomery County
Board of Elections

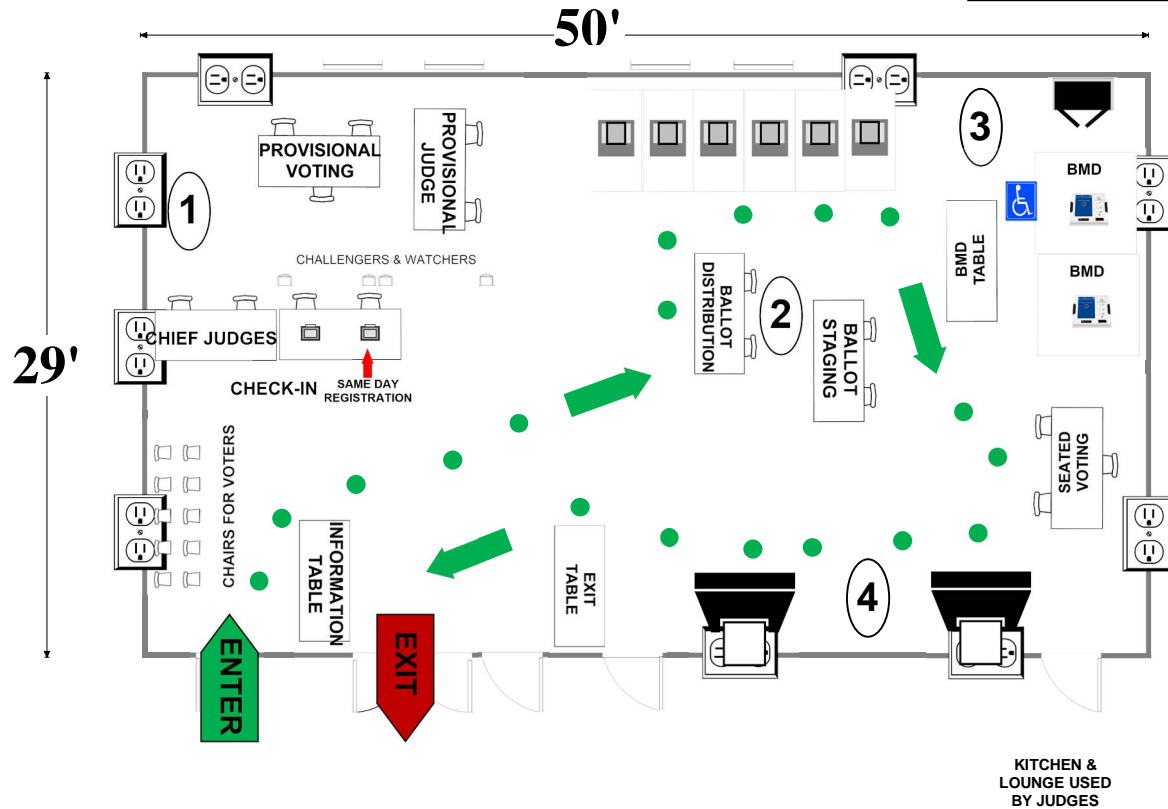
10/4/2024







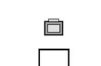




07-27 St. Dunstan's Episcopal Church
 5450 Massachusetts Ave
 Bethesda, MD 20816

**PARISH
 HALL**

RECOMMENDED ROOM LAYOUT

- 6** Voting Booths
- 3** Seated Voting
- 2** Poll Books
- 2** BMDs
- 2** Scanners



-  6'X2 1/2' Table
-  Voting Booths with 2 1/2'X5' clearance
-  Transfer Cart
-  Window
-  Ballot Marking Device
-  Vending Machine
-  Electronic Poll Book
-  Scanner
- Scanner Judge stands
 2 - 3 feet from scanner**
-  **1** Voter Travel
-  2 plug outlet
-  Fire alarm

Montgomery County
 Board of Elections

9/9/2024

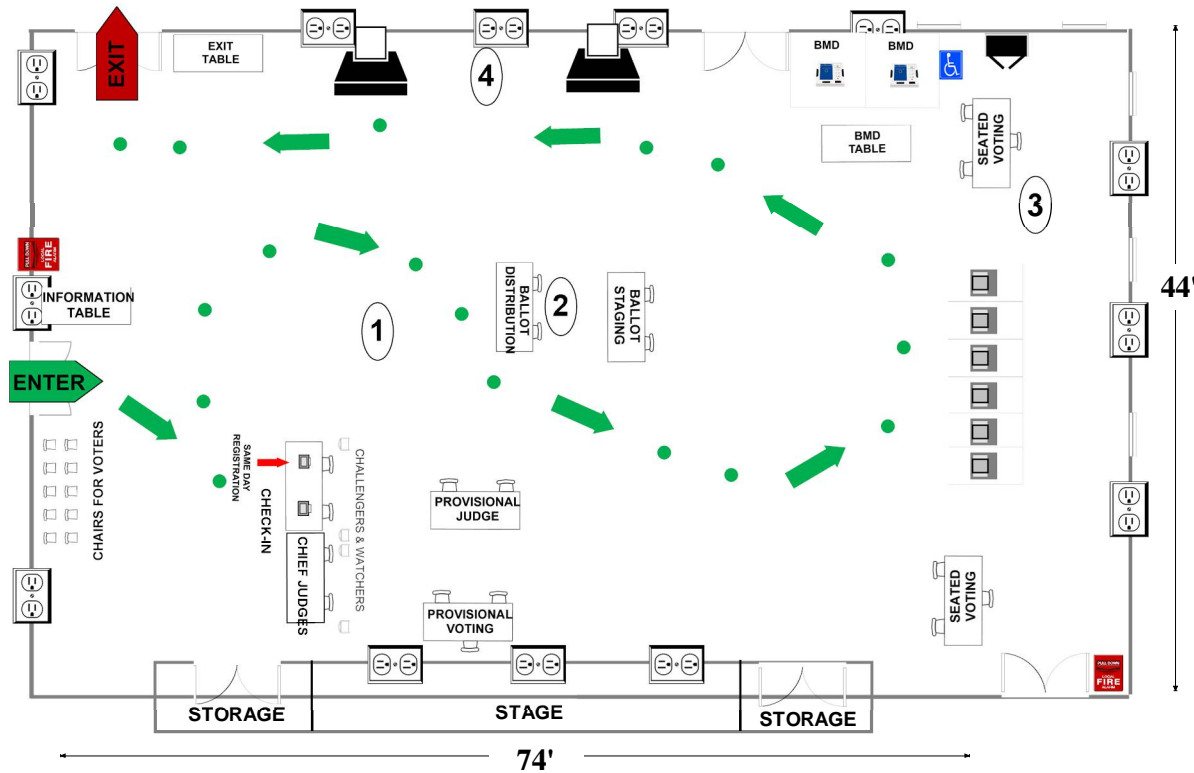
07-28 Bradley Hills Elementary School

8701 Hartsdale Ave
Bethesda, MD 20817

ALL-PURPOSE ROOM

RECOMMENDED ROOM LAYOUT

- 6** Voting Booths
- 6** Seated Voting
- 2** Poll Books
- 2** BMDs
- 2** Scanners



- 6'X2 1/2' Table
- Voting Booths with 2 1/2'X5' clearance
- Transfer Cart
- Window
- Ballot Marking Device
- Vending Machine
- Electronic Poll Book
- Scanner
- Scanner Judge stands**
2 - 3 feet from scanner
- 1 Voter Travel
- 2 plug outlet
- Fire alarm

Montgomery County
Board of Elections

9/9/2024

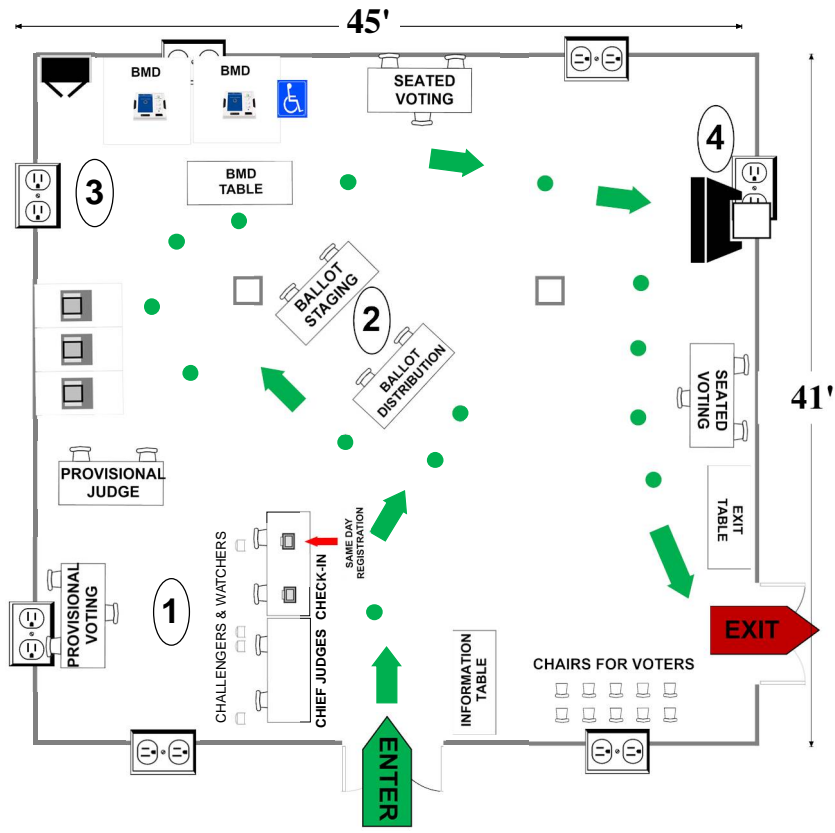
07-31 The Promenade Party Room

5225 Pooks Hill Rd
Bethesda, MD 20814

COMMUNITY ROOM

RECOMMENDED ROOM LAYOUT

- 3** Voting Booths
- 6** Seated Voting
- 2** Poll Books
- 2** BMDs
- 2** Scanners*



***Note:**
Space in the room does not allow for two scanners. For emergencies one scanner is stored on site. The scanner needs to be opened and closed at the end of the night if it is not used.

	6'X2½' Table		Ballot Marking Device		Voter Travel
	Voting Booths with 2½'X5' clearance		Vending Machine		2 plug outlet
	Transfer Cart		Electronic Poll Book		Fire alarm
	Window		Scanner		Pillar
			Scanner Judge stands 2 - 3 feet from scanner		

Montgomery County
Board of Elections
9/9/2024

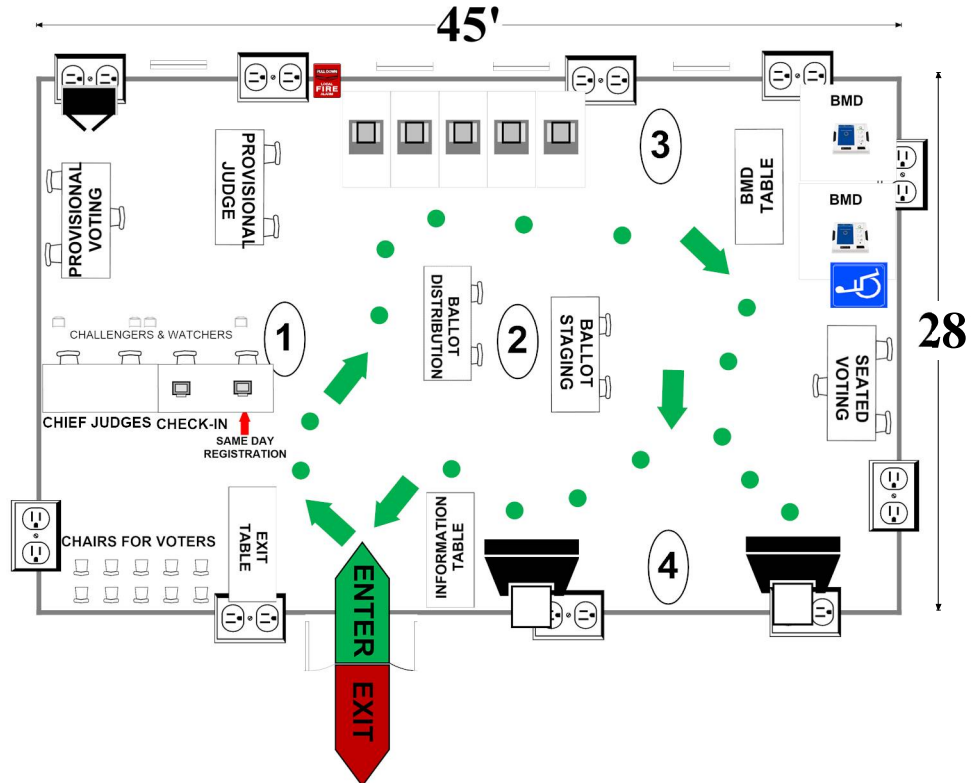
07-32 Chevy Chase Library

8005 Connecticut Ave
Chevy Chase, MD 20815

RECOMMENDED ROOM LAYOUT

MEETING ROOM

- | | |
|---|---------------|
| 5 | Voting Booths |
| 3 | Seated Voting |
| 2 | Poll Books |
| 2 | BMDs |
| 2 | Scanners |



- | | | | | | |
|--|--|--|---|--|---------------|
| | 6'X2 1/2' Table | | Ballot Marking Device | | Voter Travel |
| | Voting Booths with 2 1/2'X5' clearance | | Vending Machine | | 2 plug outlet |
| | Transfer Cart | | Electronic Poll Book | | Scanner |
| | Window | | Scanner Judge stands
2 - 3 feet from scanner | | Fire alarm |

Montgomery County
Board of Elections

9/9/2024