

08-01 Olney Elementary School

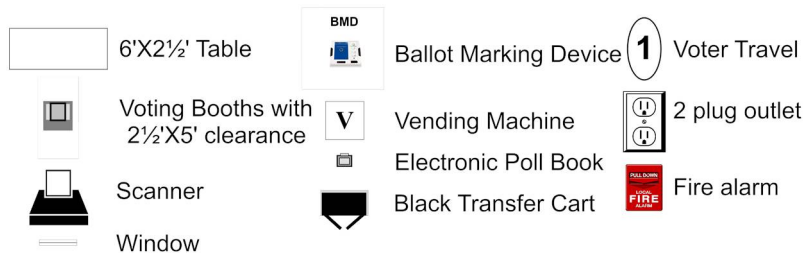
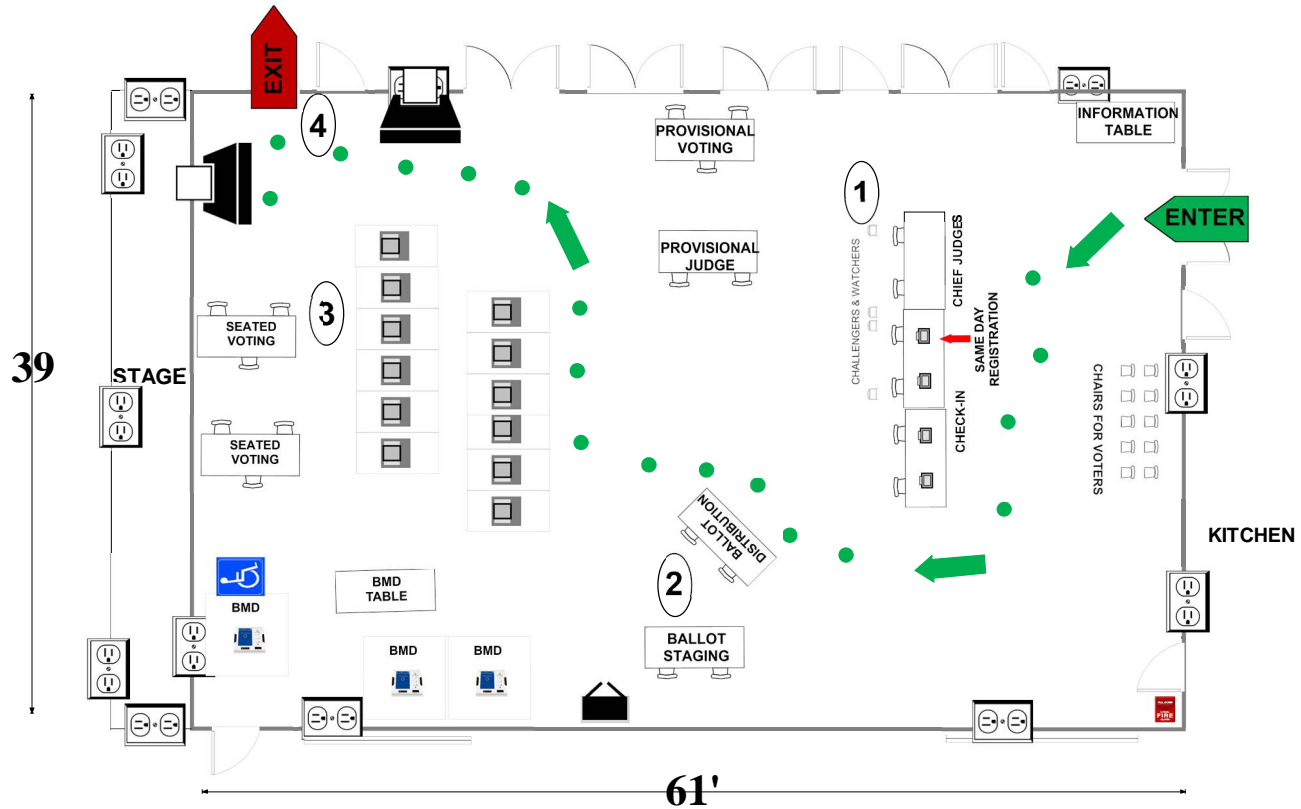
3401 Queen Mary Dr

Olney, MD 20832

RECOMMENDED ROOM LAYOUT

ALL-PURPOSE ROOM

- 12** Voting Booths
- 6** Seated Voting
- 4** Poll Books
- 3** BMDs
- 2** Scanners



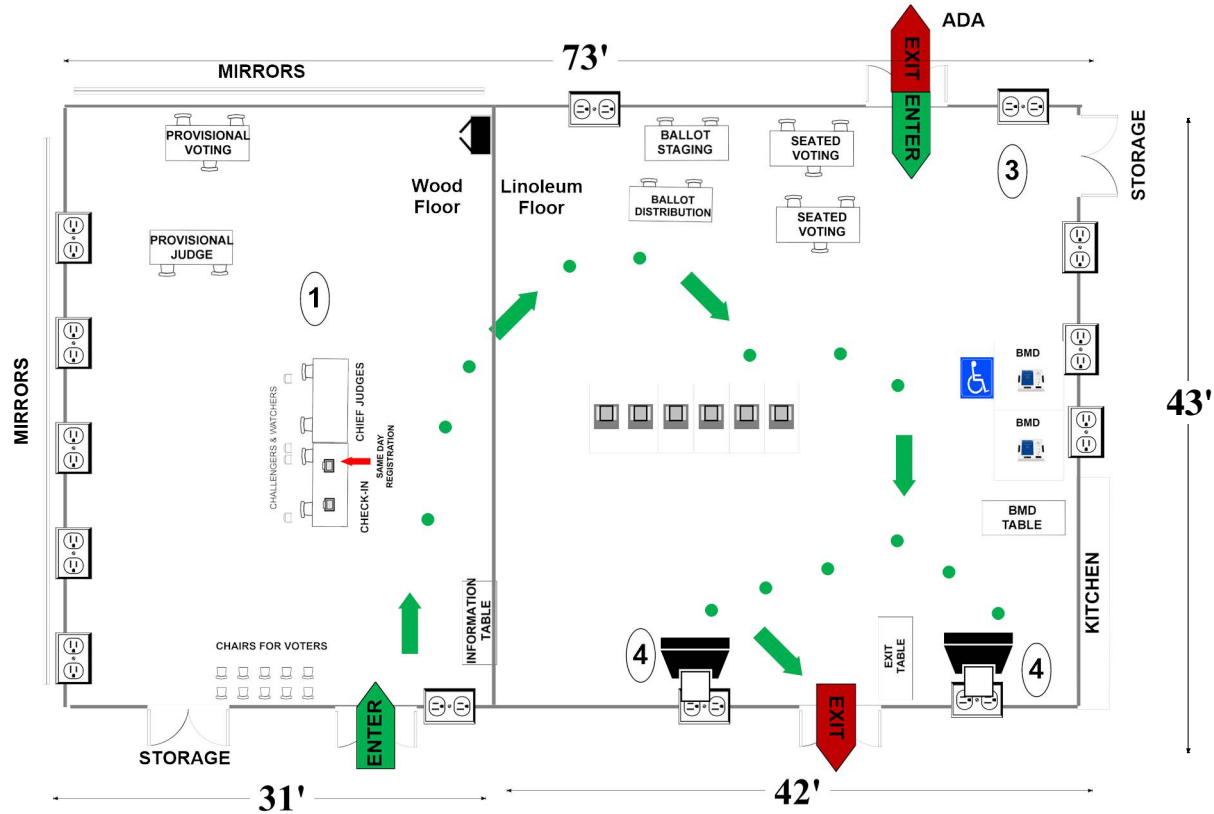
Montgomery County
Board of Elections
10/7/2024

**08-02 Longwood Community
Recreation Center
19300 Georgia Ave
Brookeville, MD 20833**

RECOMMENDED ROOM LAYOUT

**ALL PURPOSE
ROOM**

- 6** Voting Booths
- 6** Seated Voting
- 2** Poll Books
- 2** BMDs
- 2** Scanners



- 6'X2 1/2' Table
- Voting Booths with 2 1/2'X5' clearance
- Scanner
- Window
- Ballot Marking Device
- Vending Machine
- Electronic Poll Book
- Black Transfer Cart
- Voter Travel
- 2 plug outlet
- Fire alarm
- Land line jack

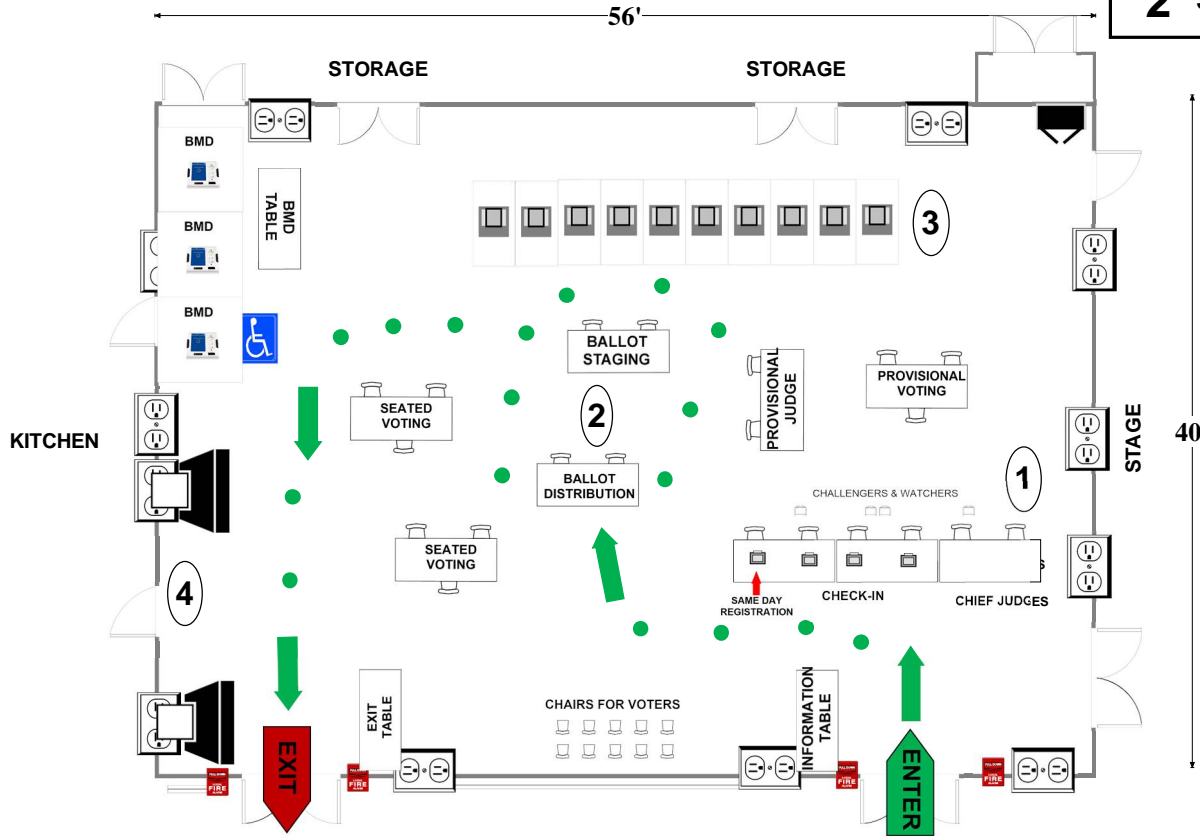
Montgomery County
Board of Elections
10/7/2024

08-03 Flower Valley Elementary School
 4615 Sunflower Dr
 Rockville, MD 20853

ALL-PURPOSE ROOM

RECOMMENDED ROOM LAYOUT

- 10** Voting Booths
- 6** Seated Voting
- 4** Poll Books
- 3** BMDs
- 2** Scanners



- 6'X2½' Table
- Voting Booths with 2½'X5' clearance
- Transfer Cart
- Window
- Ballot Marking Device
- Vending Machine
- Electronic Poll Book
- Scanner
- Scanner Judge stands**
2 - 3 feet from scanner
- Voter Travel
- 2 plug outlet
- Fire alarm

Montgomery County
 Board of Elections
 9/9/2024

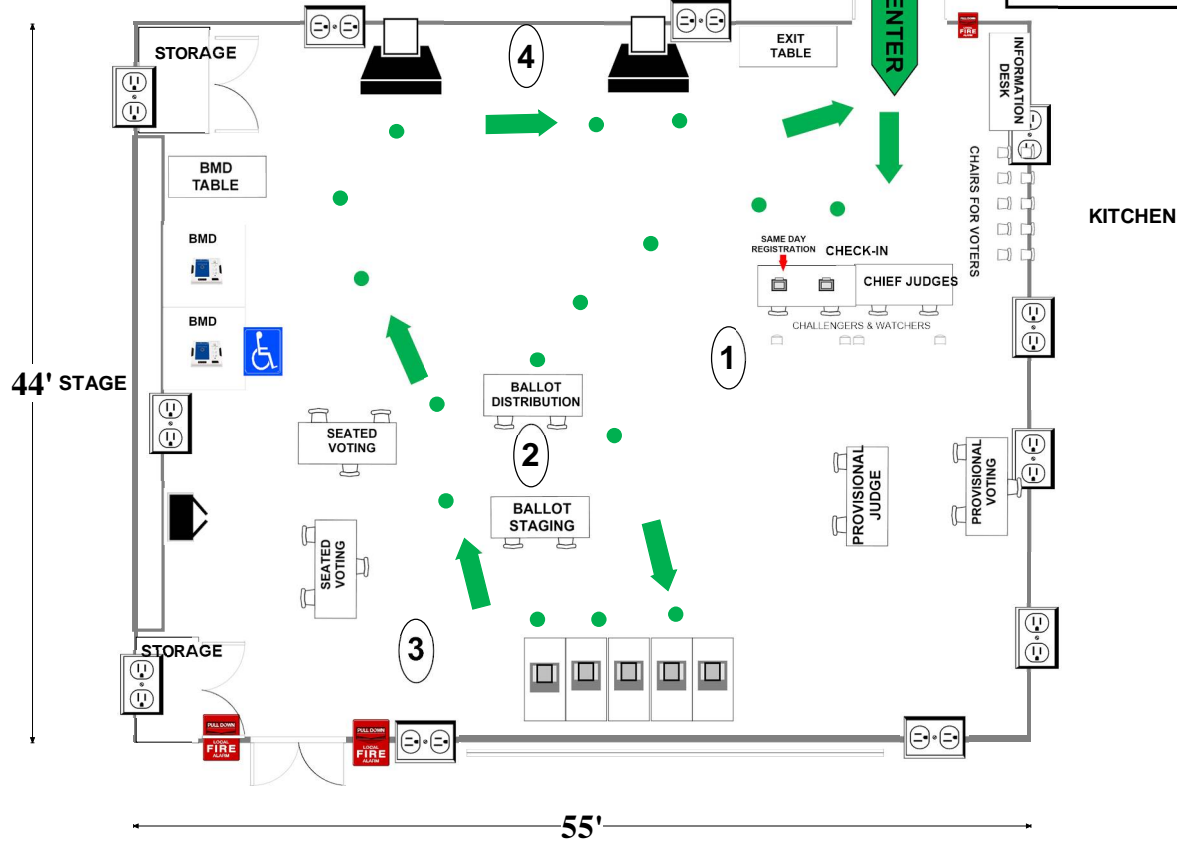
08-04 Sequoyah Elementary School

17301 Bowie Mill Rd
Derwood, MD 20855

ALL-PURPOSE ROOM

RECOMMENDED ROOM LAYOUT

- 5** Voting Booths
- 6** Seated Voting
- 2** Poll Books
- 2** BMDs
- 2** Scanners



- 6'X2 1/2' Table
- Ballot Marking Device
- Vending Machine
- Electronic Poll Book
- Scanner
- Scanner Judge stands**
2 - 3 feet from scanner
- Voting Booths with 2 1/2 X 5' clearance
- Transfer Cart
- Window
- 1 Voter Travel
- 2 plug outlet
- Fire alarm

Montgomery County
Board of Elections
3/19/2024

08-05 Belmont Elementary School

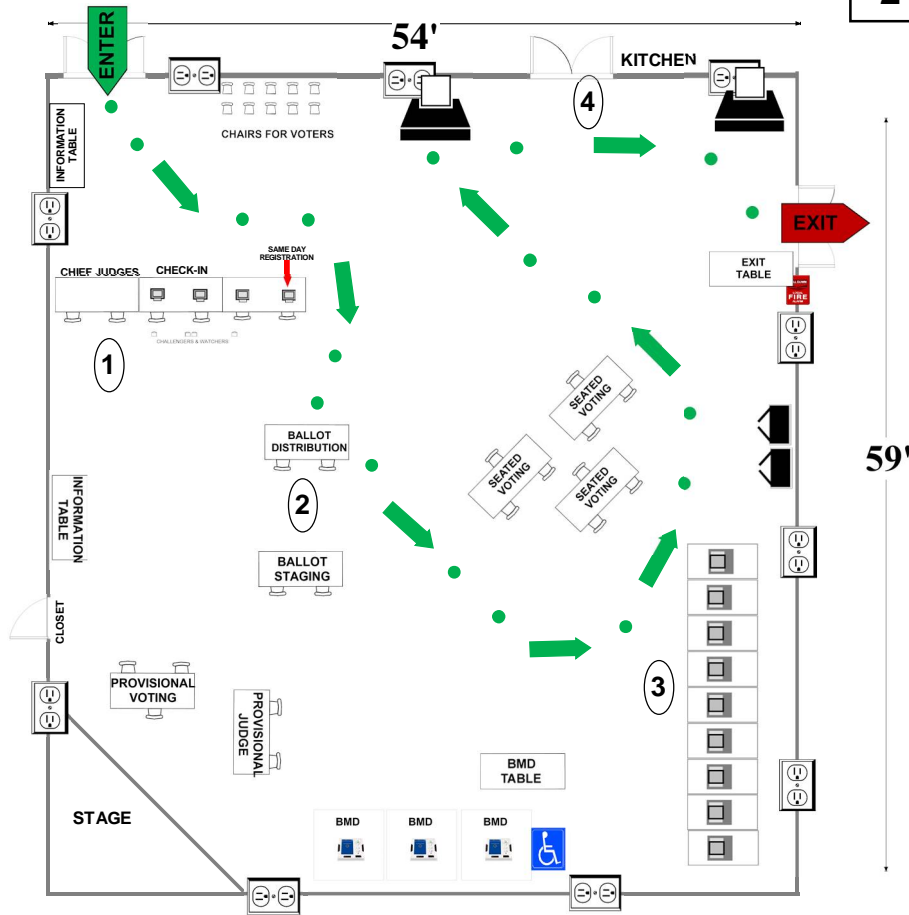
19528 Olney Mill Rd.

Olney, MD 20832

RECOMMENDED ROOM LAYOUT

ALL-PURPOSE ROOM

- 9** Voting Booths
- 9** Seated Voting
- 4** Poll Books
- 3** BMDs
- 2** Scanners



- 6'x2 1/2' Table
- Ballot Marking Device
- Voting Booths with 2 1/2'x5' clearance
- Vending Machine
- Transfer Cart
- Electronic Poll Book
- Scanner
- Voter Travel
- 2 plug outlet
- Fire alarm
- Window
- Scanner Judge stands
2 - 3 feet from scanner

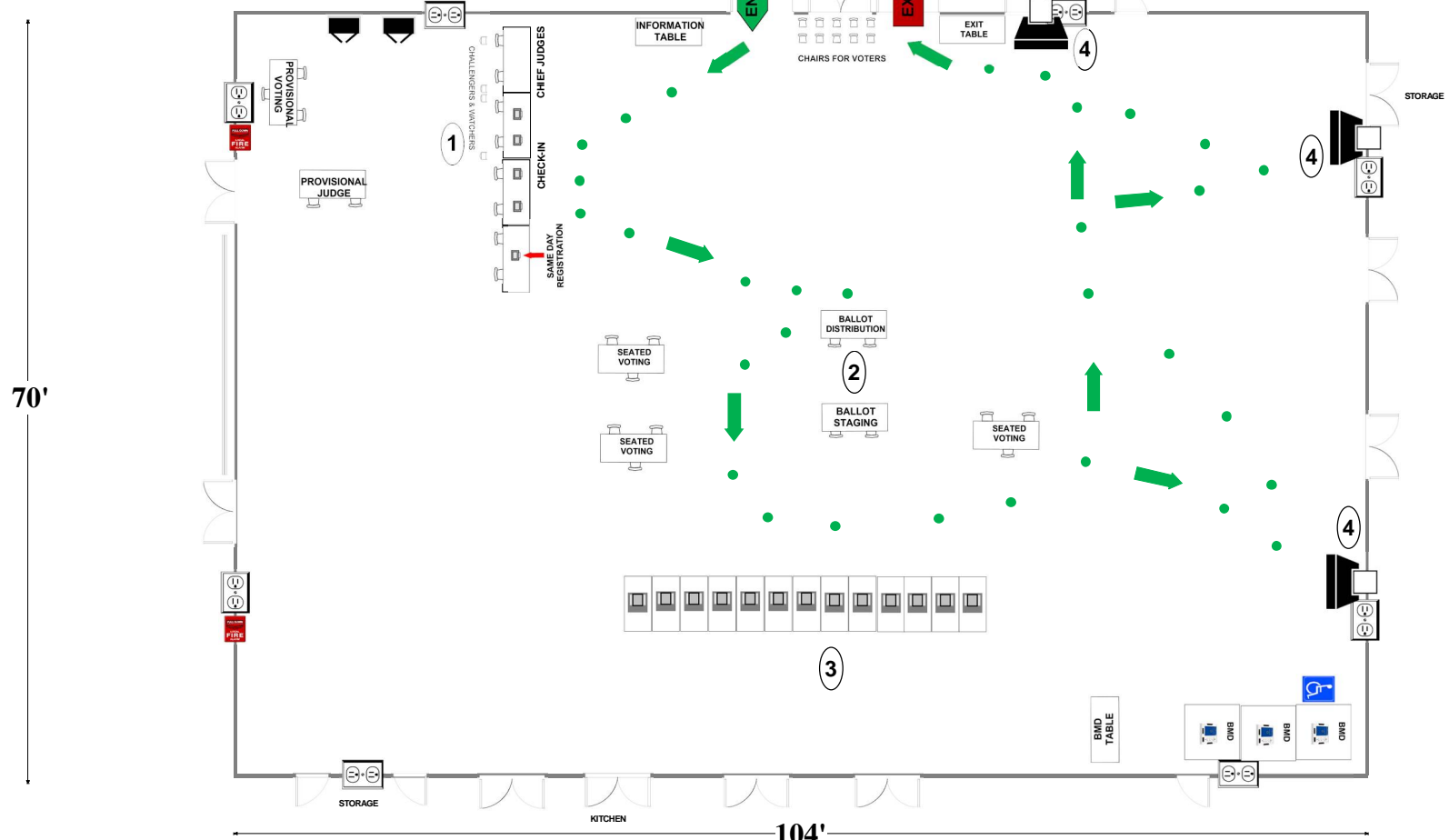
Montgomery County
Board of Elections
4/23/2024

08-06 / 08-17 Sherwood High School

300 Olney-Sandy Spring Rd
Sandy Spring, MD 20860

RECOMMENDED ROOM LAYOUT

- 13** Voting Booths
- 9** Seated Voting
- 5** Poll Books
- 3** BMDs
- 3** Scanners



- 6'X2 1/2' Table
- Voting Booths with 2 1/2'X5' clearance
- Scanner
- Window
- BMD Ballot Marking Device
- Vending Machine
- Electronic Poll Book
- Black Transfer Cart
- 1 Voter Travel
- 2 plug outlet
- Fire alarm

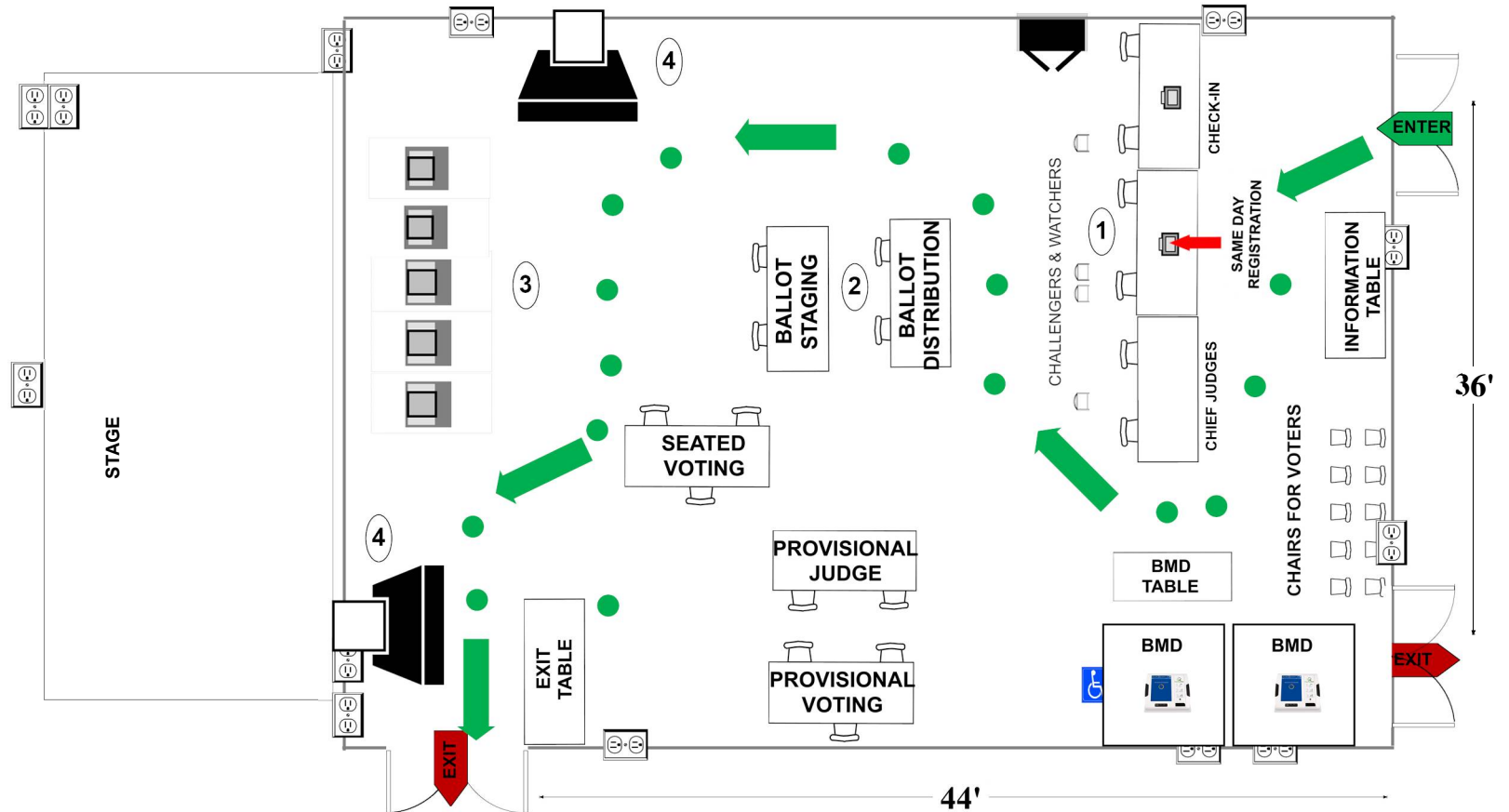
Montgomery County
Board of Elections
9/9/2024

**08-07 Ross Boddy Neighborhood
Community Center
18529 Brooke Rd
Sandy Spring, MD 20860**

RECOMMENDED ROOM LAYOUT

- 5** Voting Booths
- 3** Seated Voting
- 2** Poll Books
- 2** BMDs
- 2** Scanners

SOCIAL HALL



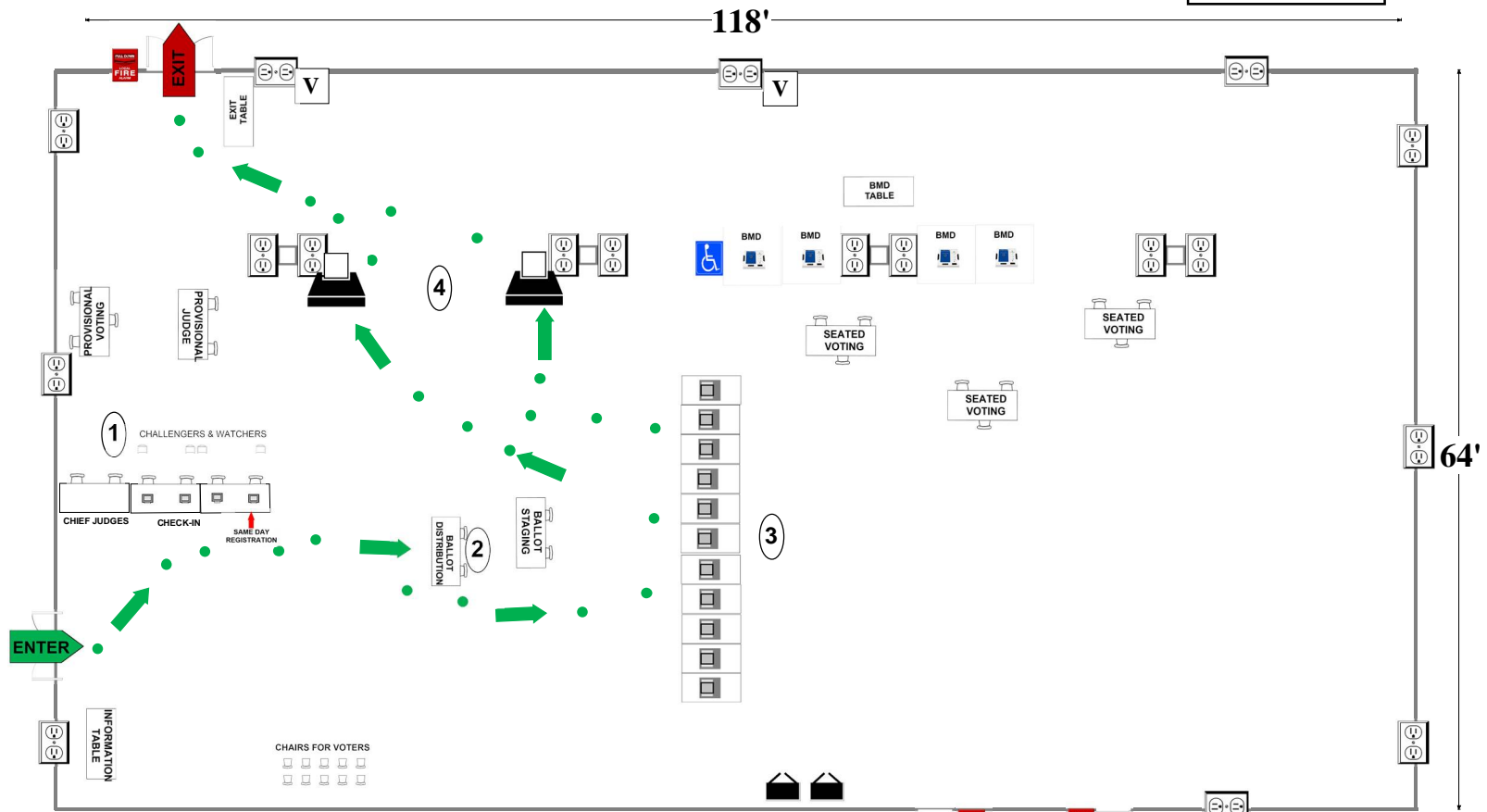
- 6'X2½' Table
- Voting Booths with 2½'X5' clearance
- Scanner
- Window
- Ballot Marking Device
- Column
- Electronic Poll Book
- Black Transfer Cart
- 1 Voter Travel
- 2 plug outlet
- Fire alarm

08-08 Col. Zadok Magruder High School
 5939 Muncaster Mill Rd
 Rockville, MD 20855

CAFETERIA

RECOMMENDED ROOM LAYOUT

- 11** Voting Booths
- 9** Seated Voting
- 4** Poll Books
- 4** BMDs
- 2** Scanners



- KITCHEN**
- 6'X2½' Table
 - Voting Booths with 2½'X5' clearance
 - Transfer Cart
 - Window
 - Ballot Marking Device
 - Vending Machine
 - Electronic Poll Book
 - Scanner
 - Scanner Judge stands
2 - 3 feet from scanner
 - Voter Travel
 - 2 plug outlet
 - FIRE

Montgomery County
 Board of Elections
 10/7/2024

08-09 Cashell Elementary School

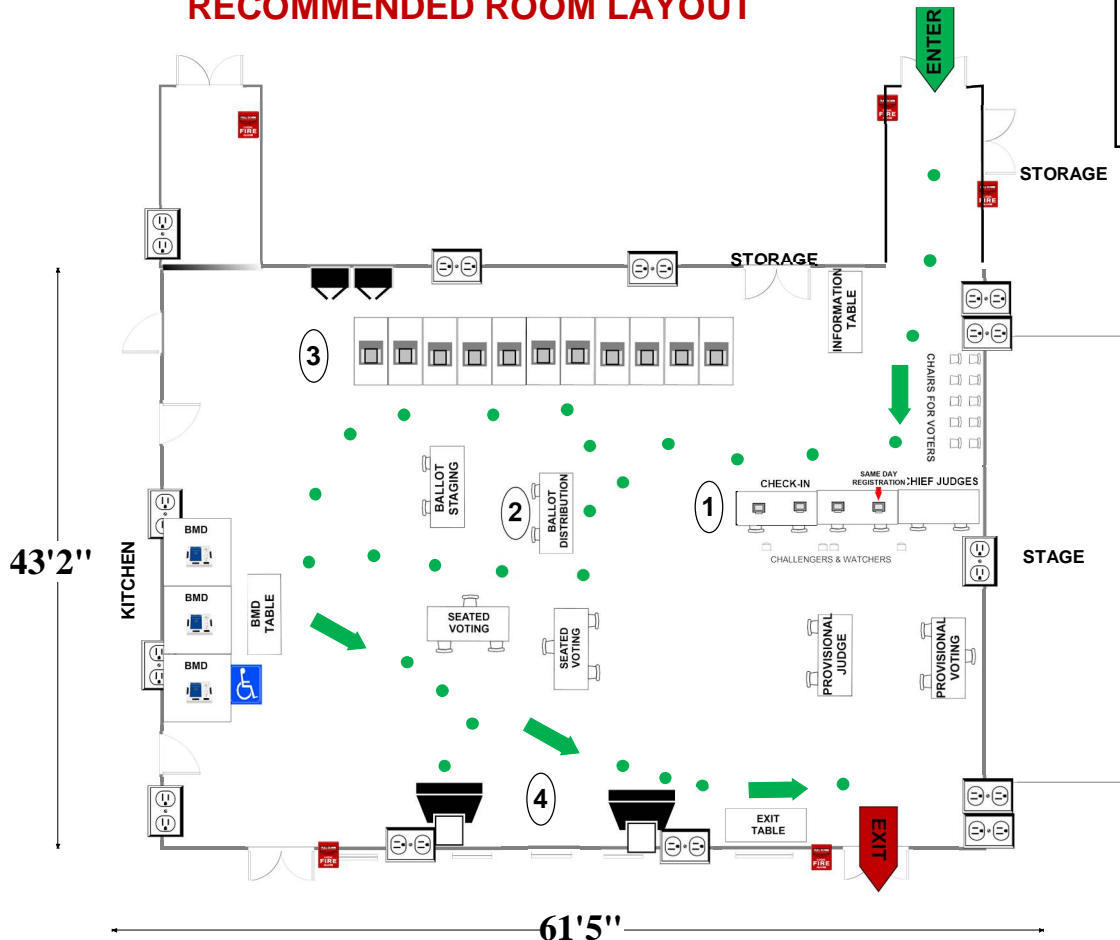
17101 Cashell Rd

Rockville, MD 20853

ALL-PURPOSE ROOM

RECOMMENDED ROOM LAYOUT

- 11** Voting Booths
- 6** Seated Voting
- 4** Poll Books
- 3** BMDs
- 2** Scanners



- 6'X2 1/2' Table
- Ballot Marking Device
- Voting Booths with 2 1/2'X5' clearance
- Transfer Cart
- Window
- Vending Machine
- Electronic Poll Book
- Scanner
- Scanner Judge stands
2 - 3 feet from scanner
- 1 Voter Travel
- 2 plug outlet
- Fire alarm

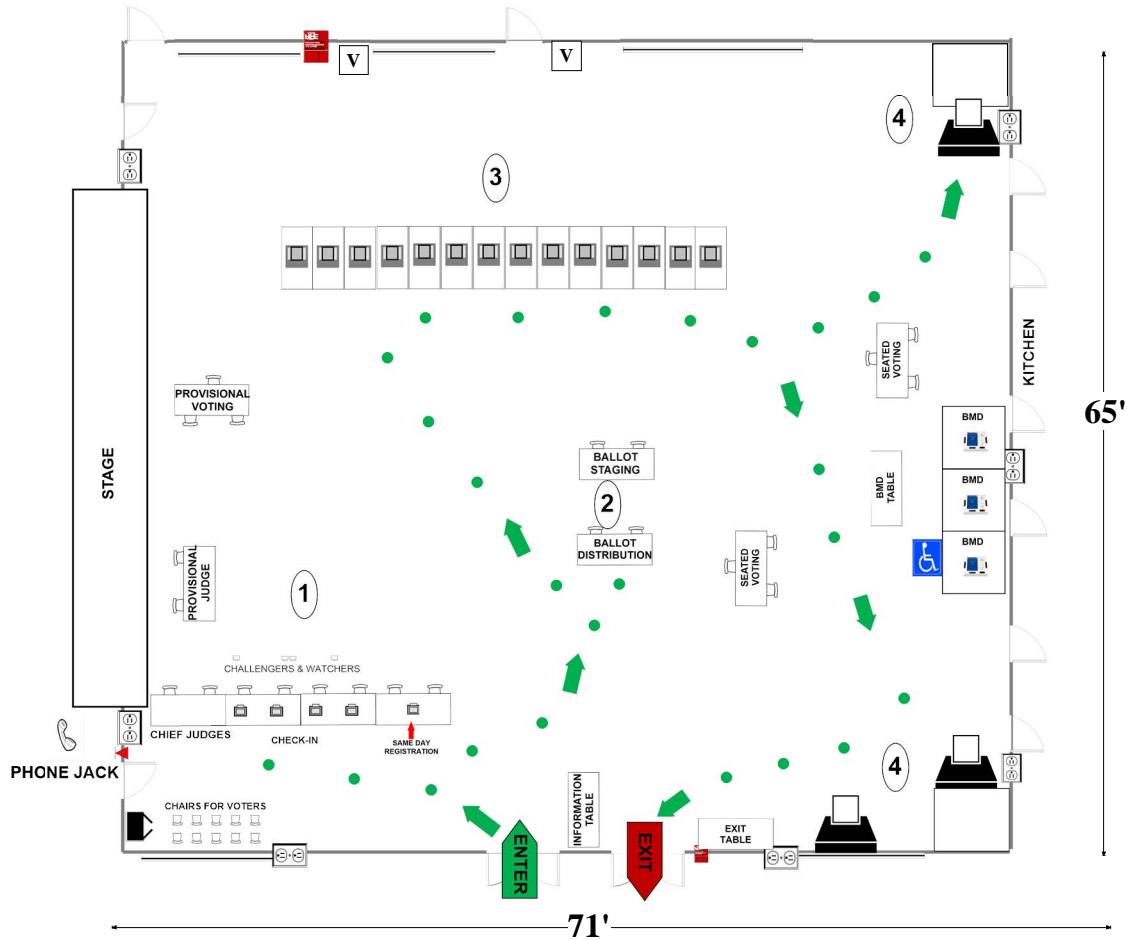
Montgomery County
Board of Elections
10/7/2024

08-10 William H. Farquhar Middle School
 16915 Batchelor's Forest Rd
 Olney MD 20832

CAFETERIA

RECOMMENDED ROOM LAYOUT

- 14** Voting Booths
- 6** Seated Voting
- 5** Poll Books
- 3** BMDs
- 3** Scanners



- 6'X2 1/2' Table
- Voting Booths with 2 1/2'X5' clearance
- Transfer Cart
- Window
- Ballot Marking Device
- Vending Machine
- Electronic Poll Book
- Scanner
- Scanner Judge stands**
2 - 3 feet from scanner
- Voter Travel
- 2 plug outlet
- Fire alarm

Montgomery County
 Board of Elections
 9/9/2024

08-11 Brooke Grove Elementary School

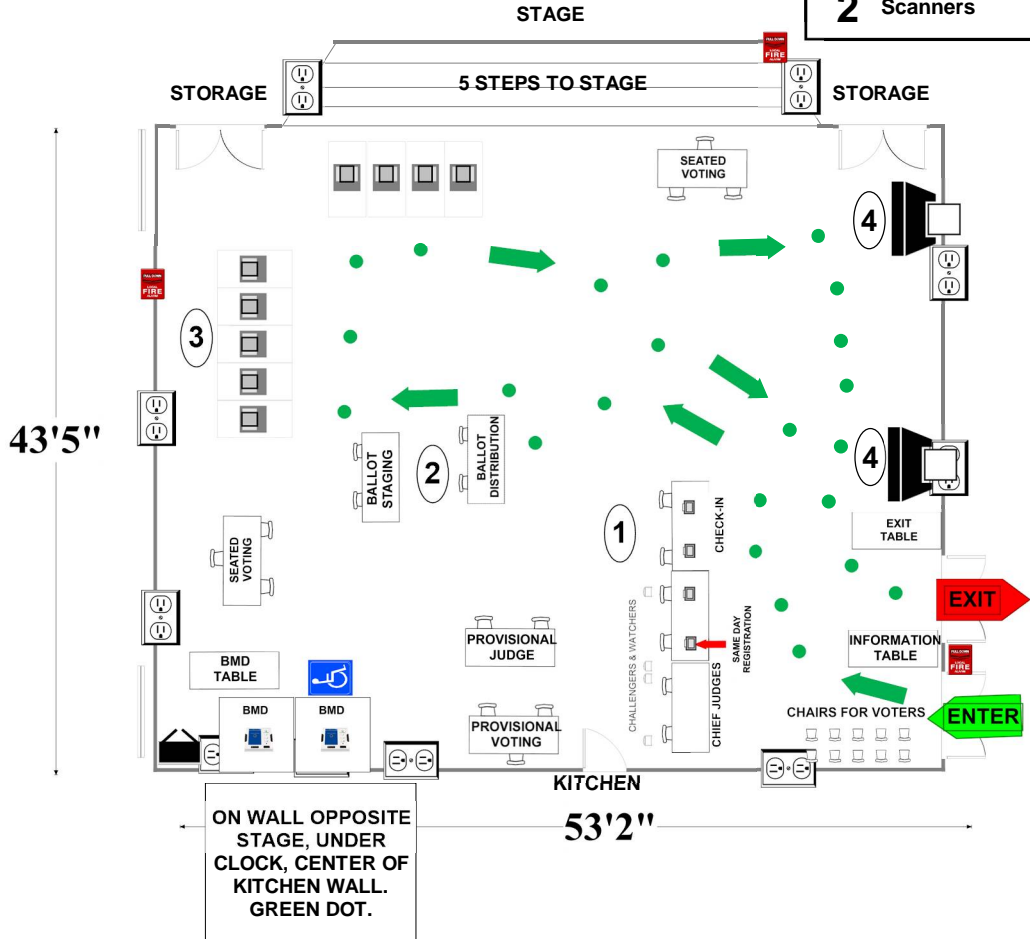
2700 Spartan Rd

Olney, MD 20832

ALL-PURPOSE ROOM

RECOMMENDED ROOM LAYOUT

- 9** Voting Booths
- 6** Seated Voting
- 4** Poll Books
- 2** BMDs
- 2** Scanners



ON WALL OPPOSITE STAGE, UNDER CLOCK, CENTER OF KITCHEN WALL. GREEN DOT.

- 6'X2 1/2' Table
- Voting Booths with 2 1/2'X5' clearance
- Scanner
- Window
- BMD
- Vending Machine
- Electronic Poll Book
- Black Transfer Cart
- 1 Voter Travel
- 2 plug outlet
- Fire alarm

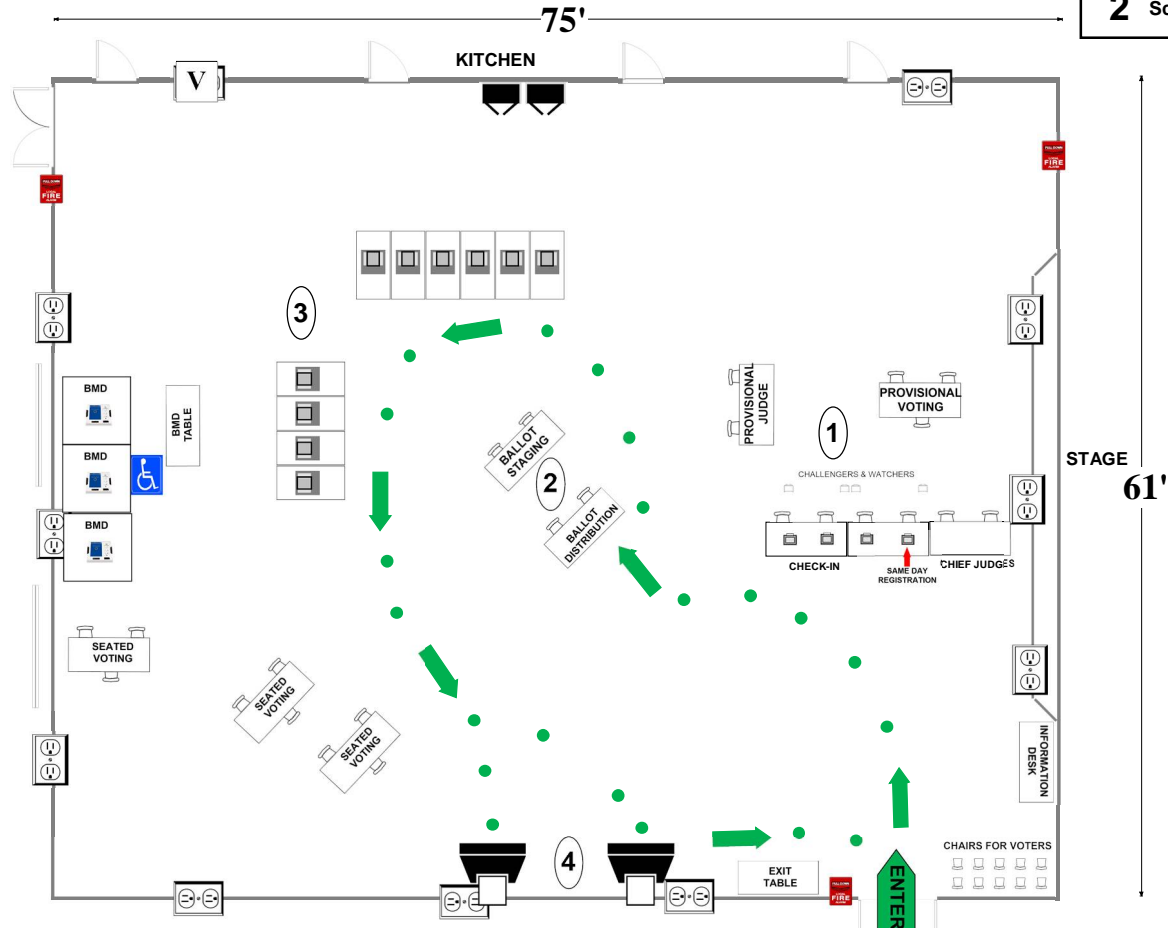
Montgomery County Board of Elections
9/9/2024

08-12 Rosa M. Parks Middle School
 19200 Olney Mill Rd
 Olney, MD 20832

CAFETERIA

RECOMMENDED ROOM LAYOUT

- 10** Voting Booths
- 9** Seated Voting
- 4** Poll Books
- 3** BMDs
- 2** Scanners



- 6'x2 1/2' Table
- Voting Booths with 2 1/2'x5' clearance
- Transfer Cart
- Window
- Ballot Marking Device
- Vending Machine
- Electronic Poll Book
- Scanner
- Scanner Judge stands**
2 - 3 feet from scanner
- Voter Travel
- 2 plug outlet
- Fire alarm

Montgomery County
 Board of Elections
 9/10/2024

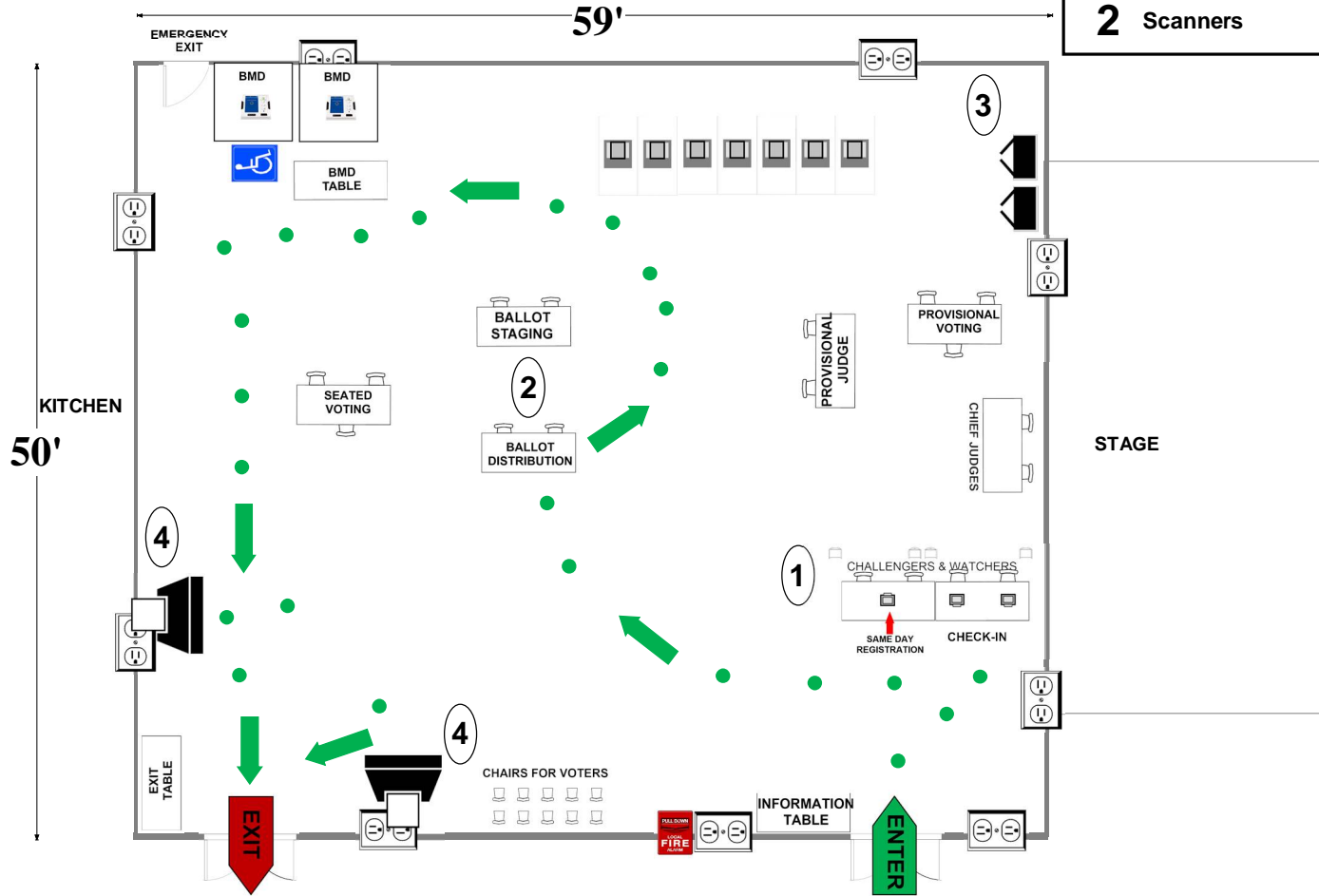
08-16 Greenwood Elementary School










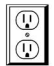

3336 Gold Mine Rd
Brookeville, MD 20833

RECOMMENDED ROOM LAYOUT

ALL-PURPOSE ROOM

- 7** Voting Booths
- 3** Seated Voting
- 3** Poll Books
- 2** BMDs
- 2** Scanners



-  6'X2 1/2' Table
-  Voting Booths with 2 1/2'X5' clearance
-  Transfer Cart
-  Window
-  Ballot Marking Device
-  Vending Machine
-  Electronic Poll Book
-  Scanner
- Scanner Judge stands**
2 - 3 feet from scanner
-  1 Voter Travel
-  2 plug outlet
-  Fire alarm

Montgomery County
Board of Elections
9/10/2024

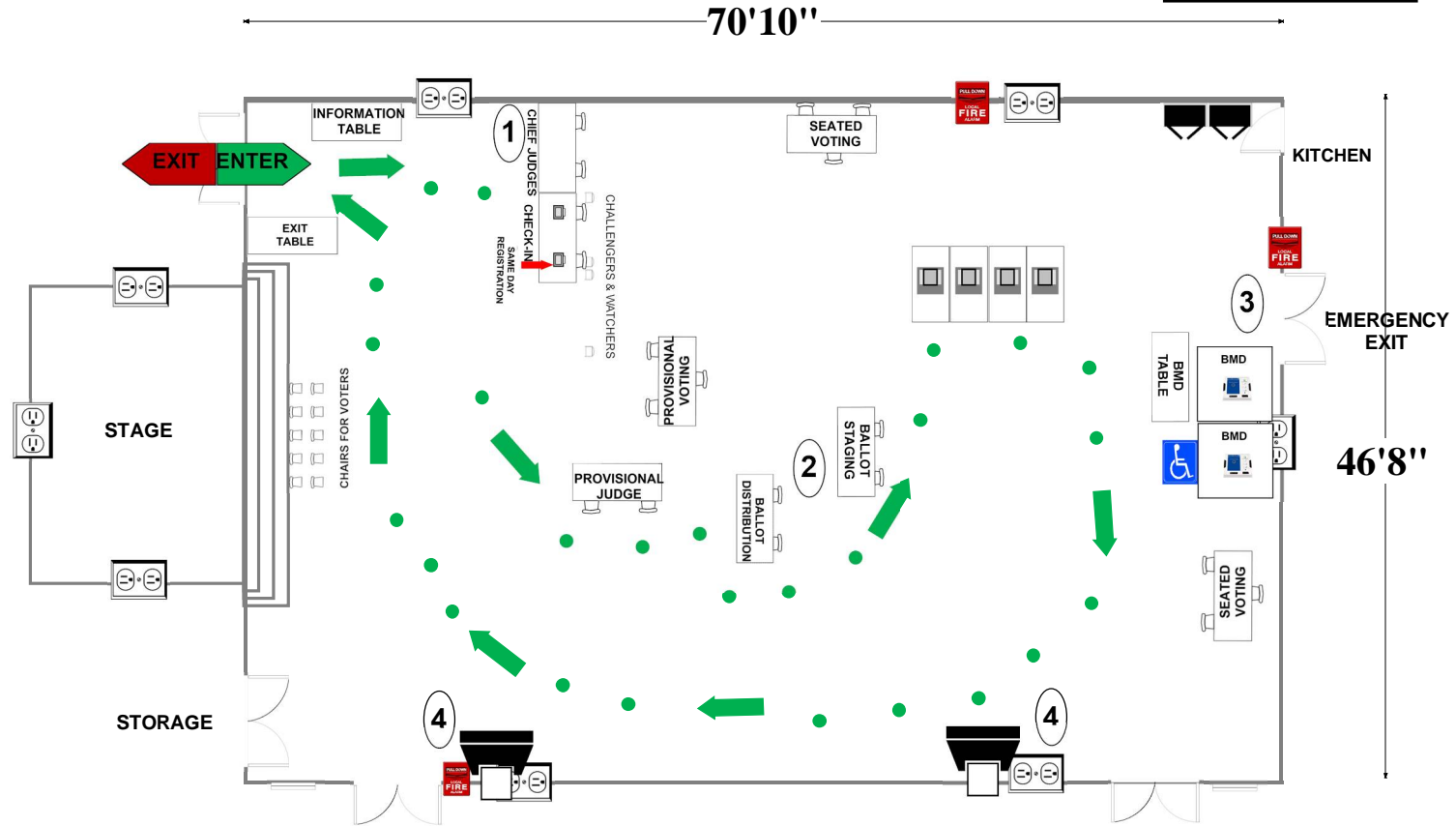
08-18 Sherwood Elementary School

1401 Olney-Sandy Spring Rd
Sandy Spring, MD 20860

RECOMMENDED ROOM LAYOUT

ALL-PURPOSE ROOM

- 4** Voting Booths
- 6** Seated Voting
- 2** Poll Books
- 2** BMDs
- 2** Scanners



- 6'X2 1/2' Table
- Voting Booths with 2 1/2'X5' clearance
- Transfer Cart
- Window
- Ballot Marking Device
- Vending Machine
- Electronic Poll Book
- Scanner
- Scanner Judge stands**
2 - 3 feet from scanner
- 1 Voter Travel
- 2 plug outlet
- Fire alarm

Montgomery County
Board of Elections
9/10/2024