

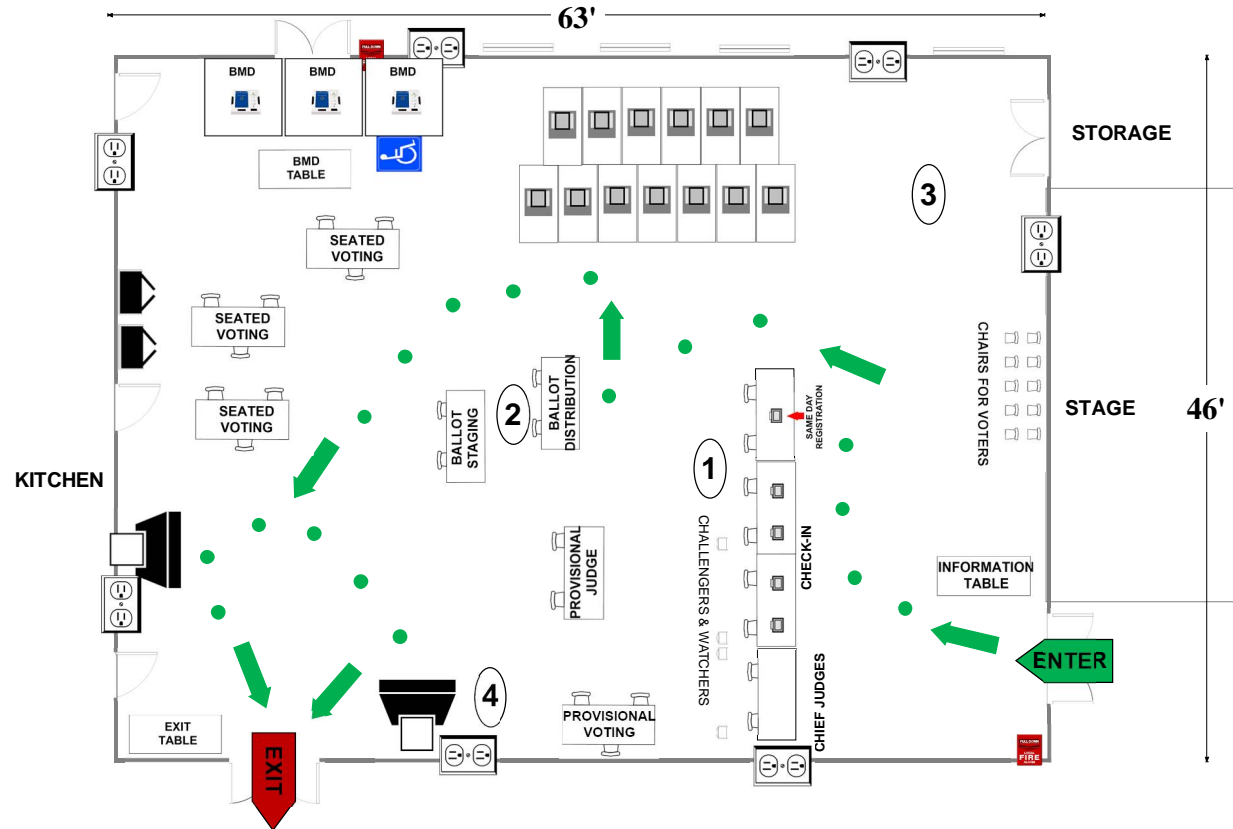
09-01 Gaithersburg Elementary School












35 N. Summit Ave.
Gaithersburg, MD 20877

ALL-PURPOSE ROOM

RECOMMENDED ROOM LAYOUT

- 13** Voting Booths
- 9** Seated Voting
- 5** Poll Books
- 3** BMDs
- 2** Scanners



-  6'X2 1/2' Table
-  Voting Booths with 2 1/2'X5' clearance
-  Transfer Cart
-  Window
-  Ballot Marking Device
-  Vending Machine
-  Electronic Poll Book
-  Scanner
- Scanner Judge stands
2 - 3 feet from scanner**
-  1 Voter Travel
-  2 plug outlet
-  Fire alarm

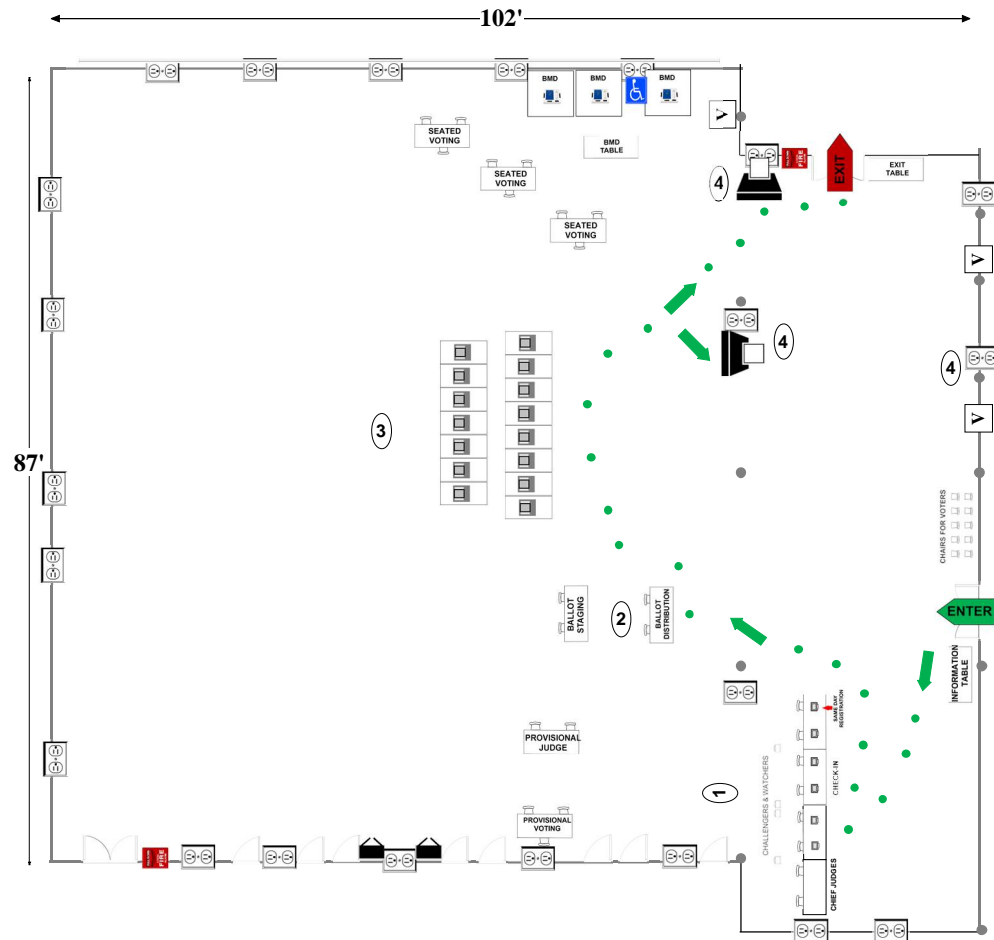
Montgomery County
Board of Elections
10/14/2024

09-02 Gaithersburg High School
 101 Education Blvd
 Gaithersburg, MD 20877

CAFETERIA

RECOMMENDED ROOM LAYOUT

- 15** Voting Booths
- 9** Seated Voting
- 6** Poll Books
- 3** BMDs
- 2** Scanners



- 6'X2 1/2' Table
- Voting Booths with 2 1/2'X5' clearance
- Transfer Cart
- Window
- Ballot Marking Device
- Vending Machine
- Electronic Poll Book
- Scanner
- Scanner Judge stands
2 - 3 feet from scanner
- 1 Voter Travel
- 2 plug outlet
- Fire alarm
- Column

Montgomery County
 Board of Elections
 9/12/2024

09-03 Brown Station Elementary School

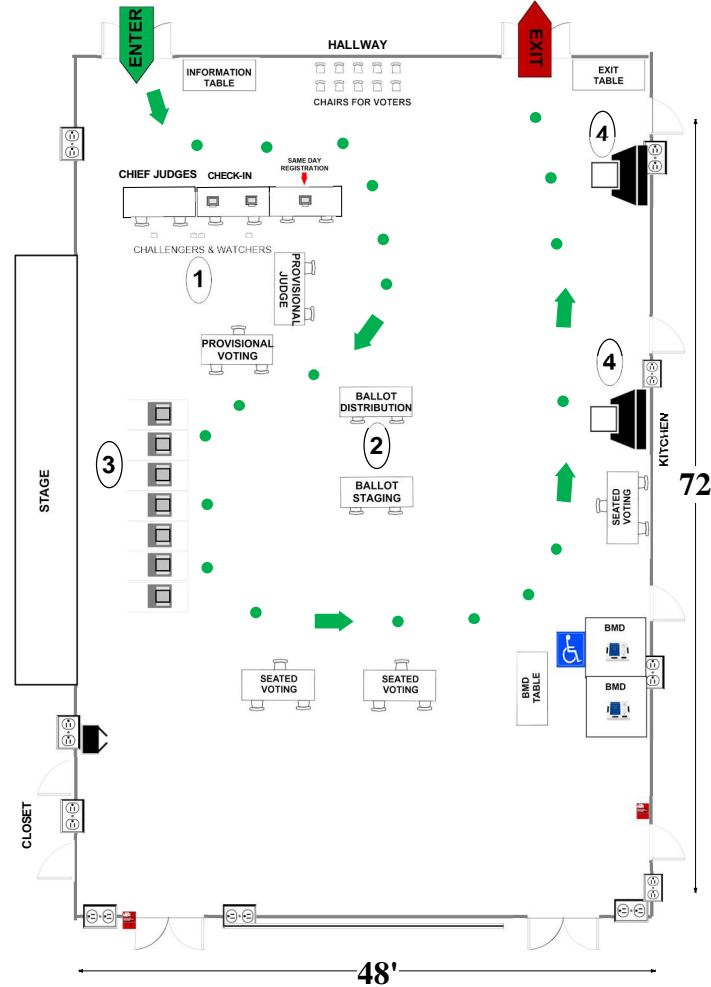
851 Quince Orchard Blvd








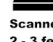



Gaithersburg MD 20878

RECOMMENDED ROOM LAYOUT

ALL-PURPOSE ROOM

- 7** Voting Booths
- 9** Seated Voting
- 3** Poll Books
- 2** BMDs
- 2** Scanners



-  6'X2 1/2' Table
 -  Voting Booths with 2 1/2'X5' clearance
 -  Transfer Cart
 -  Window
 -  BMD Ballot Marking Device
 -  Vending Machine
 -  Electronic Poll Book
 -  Scanner
 -  1 Voter Travel
 -  2 plug outlet
 -  Fire alarm
- Scanner Judge stands**
2 - 3 feet from scanner

Montgomery County
Board of Elections
9/12/2024

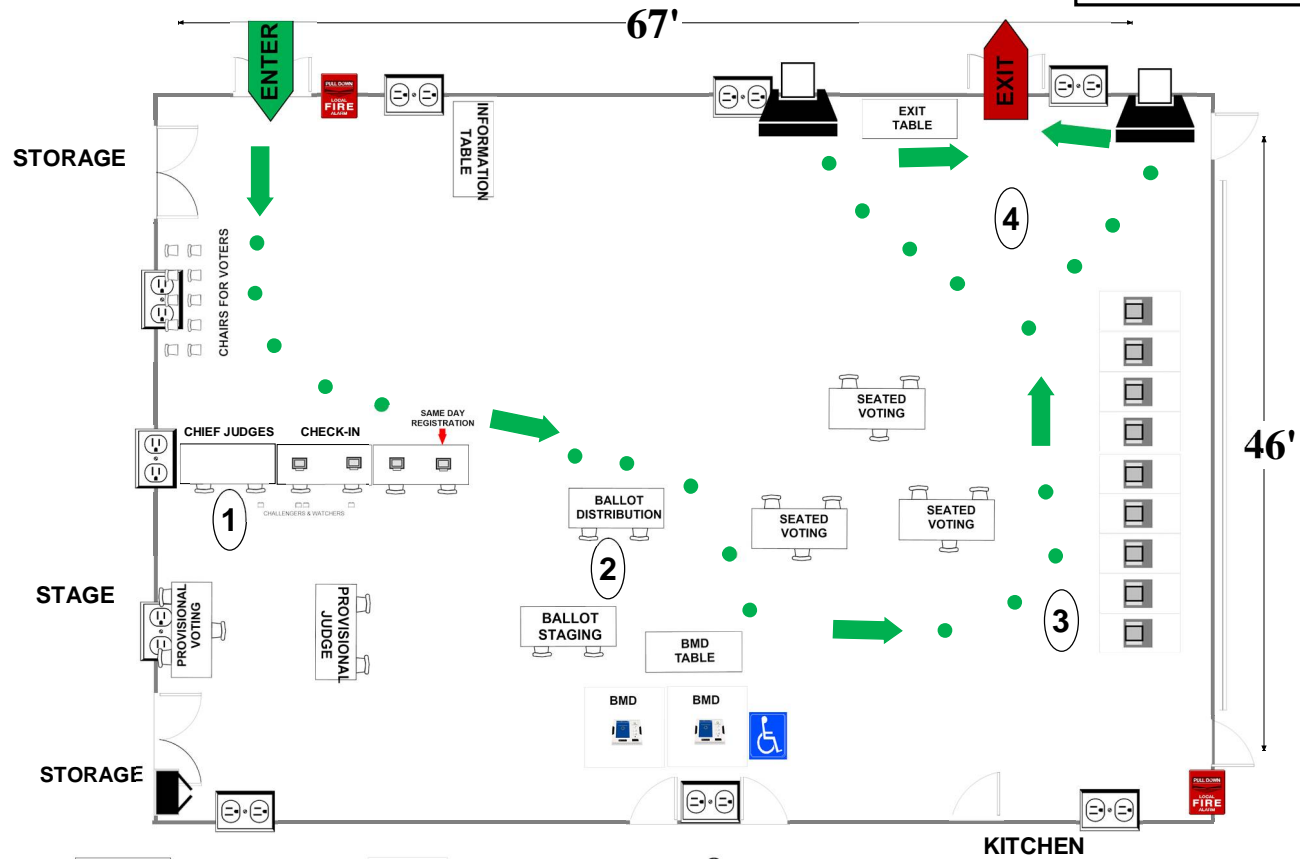
09-04 Mill Creek Towne Elementary School

17700 Park Mill Dr
Rockville, MD 20855

ALL-PURPOSE ROOM

RECOMMENDED ROOM LAYOUT

- 9** Voting Booths
- 9** Seated Voting
- 4** Poll Books
- 2** BMDs
- 2** Scanners



- 6'X2 1/2' Table
- Voting Booths with 2 1/2'X5' clearance
- Transfer Cart
- Window
- Ballot Marking Device
- Vending Machine
- Electronic Poll Book
- Scanner
- Scanner Judge stands
2 - 3 feet from scanner**
- 1 Voter Travel
- 2 plug outlet
- Fire alarm

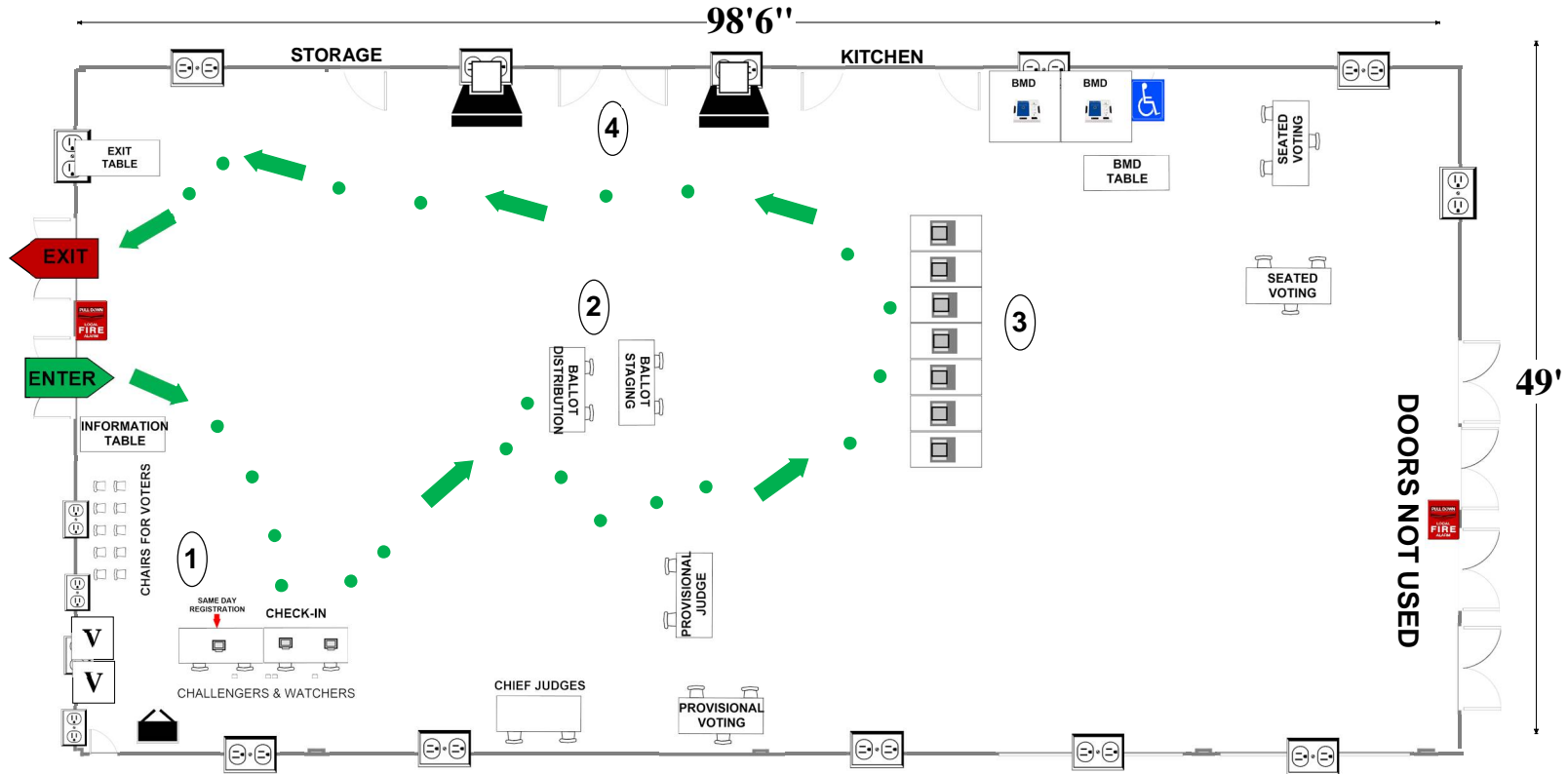
Montgomery County
Board of Elections
9/12/2024

09-05/09-46 Montgomery Village Middle School
 19300 Watkins Mill Rd
 Montgomery Village, MD 20886

CAFETERIA

RECOMMENDED ROOM LAYOUT

- | | |
|----------|---------------|
| 7 | Voting Booths |
| 6 | Seated Voting |
| 3 | Poll Books |
| 2 | BMDs |
| 2 | Scanners |



- | | | | | | |
|--|--|--|-----------------------|----------|-------------------------|
| | 6'X2 1/2' Table | | Ballot Marking Device | 1 | Voter Travel |
| | Voting Booths with 2 1/2'X5' clearance | | Vending Machine | | 2 plug outlet |
| | Transfer Cart | | Electronic Poll Book | | Fire alarm |
| | Window | | Scanner | | |
| | | | Scanner Judge stands | | 2 - 3 feet from scanner |

Montgomery County
 Board of Elections
 9/12/2024

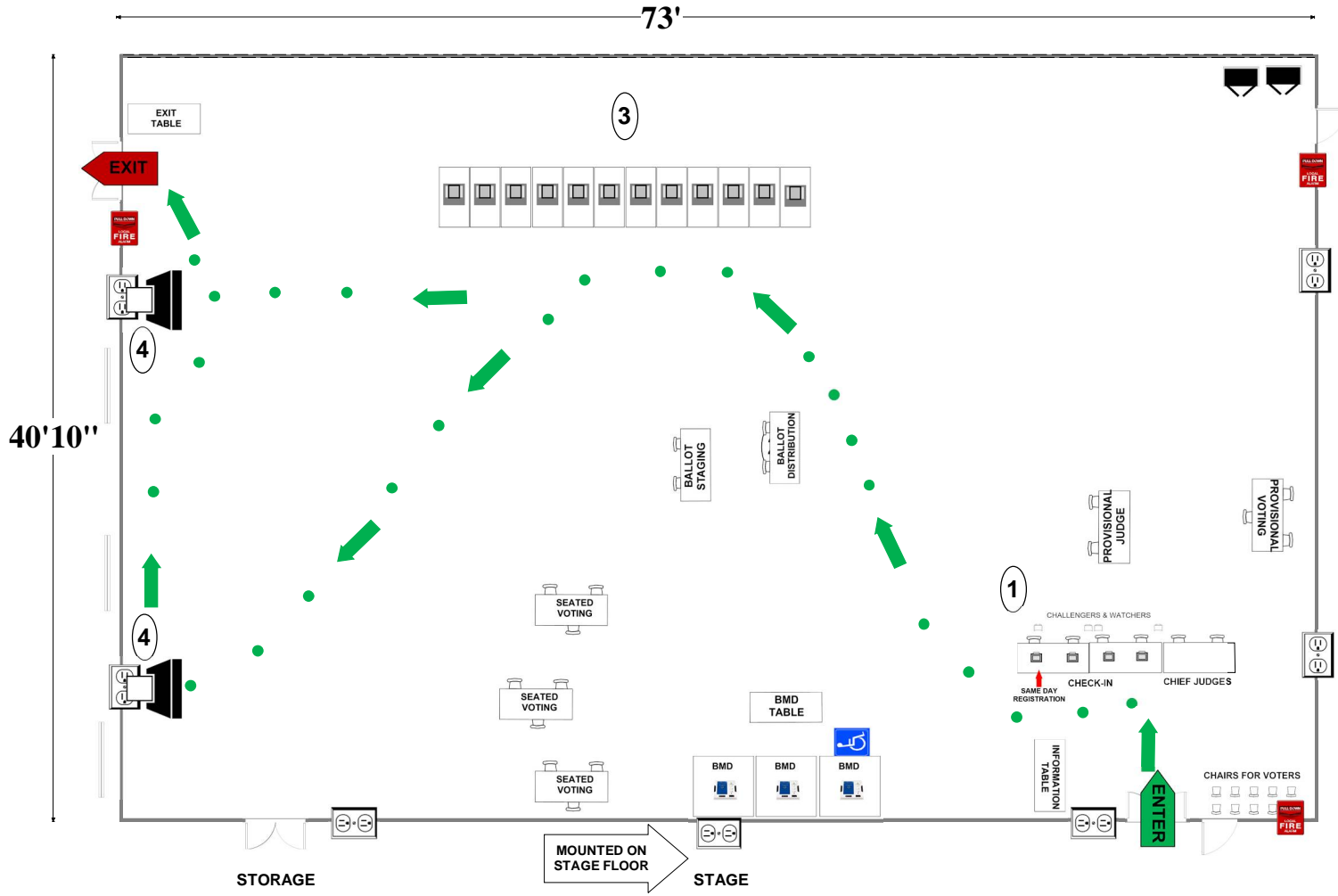
09-06 Fields Road Elementary School

One School Drive
Gaithersburg, MD 20878

ALL-PURPOSE ROOM

RECOMMENDED ROOM LAYOUT

- 12** Voting Booths
- 9** Seated Voting
- 4** Poll Books
- 3** BMDs
- 2** Scanners



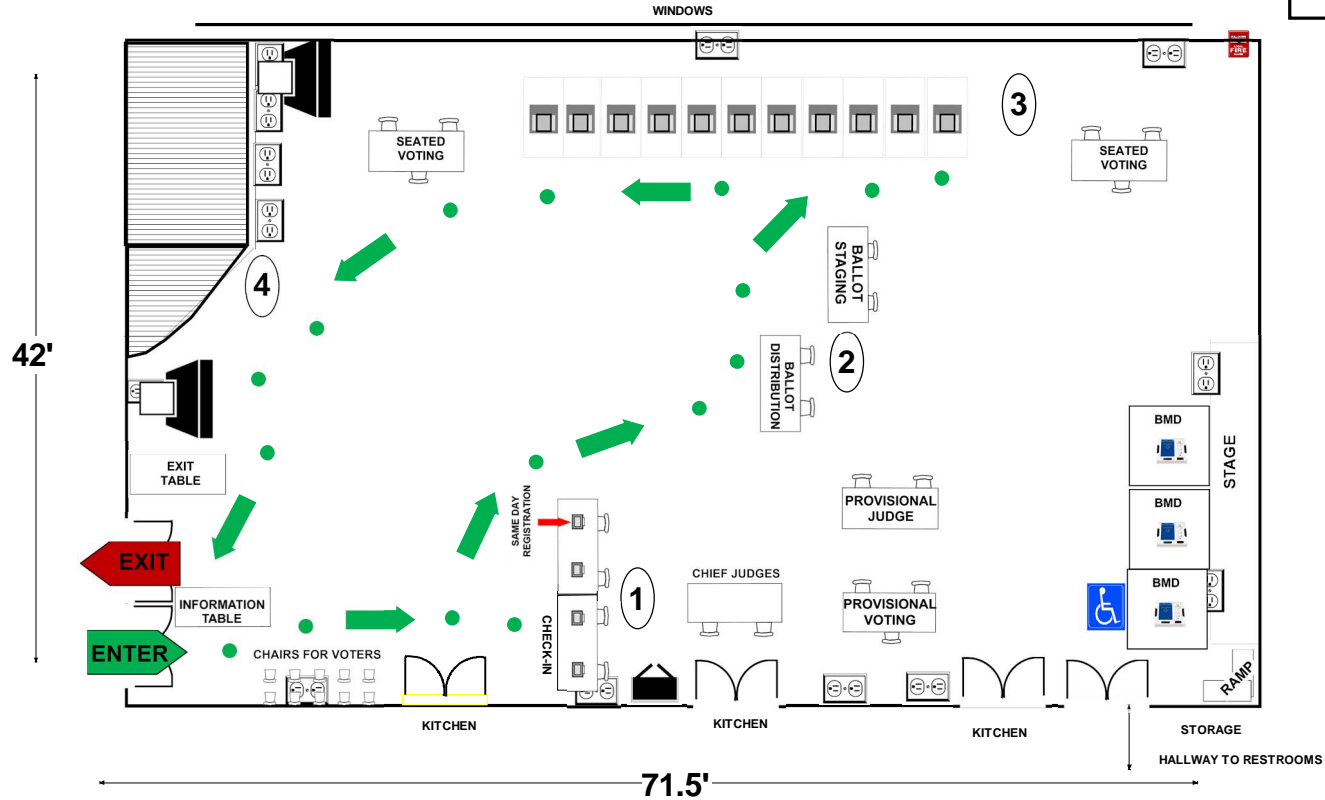
- 6'x2 1/2' Table
- Voting Booths with 2 1/2'x5' clearance
- Transfer Cart
- Window
- Ballot Marking Device
- Vending Machine
- Electronic Poll Book
- Scanner
- Scanner Judge stands**
2 - 3 feet from scanner
- 1 Voter Travel
- 2 plug outlet
- Fire alarm

Montgomery County
Board of Elections
10/14/2024

09-07 South Lake Elementary School
18201 Contour Road
Gaithersburg, MD 20877
RECOMMENDED ROOM LAYOUT

ALL-PURPOSE ROOM

- 11** Voting Booths
- 6** Seated Voting
- 4** Poll Books
- 3** BMDs
- 2** Scanners



- 6'x2½' Table
- Voting Booth
- Transfer Cart
- Window
- Ballot Marking Device
- Electronic Poll Book
- Scanner
- Column
- 1 • Voter Travel
- 2 plug outlet
- Accessible Voting booth/ Ballot Marking Device
- Fire alarm

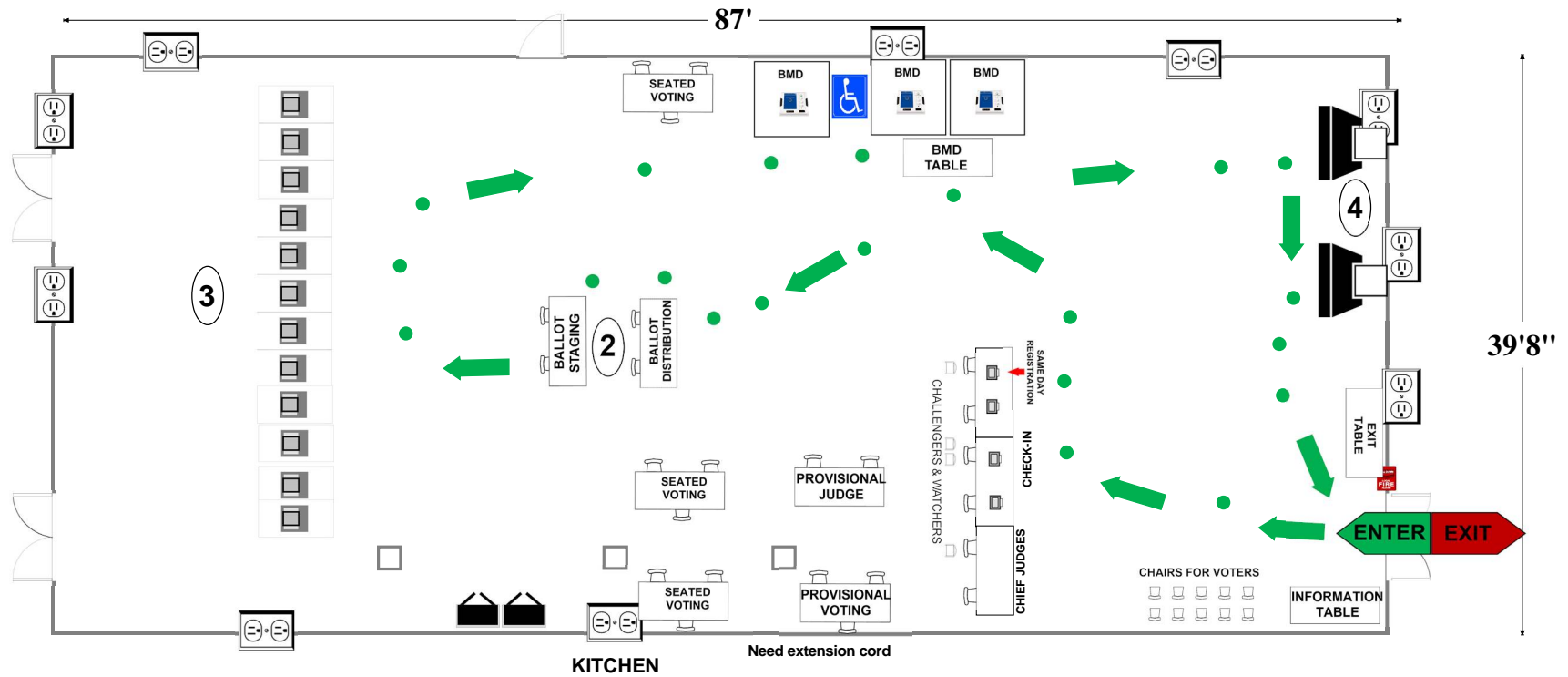
Montgomery County
 Board of Elections
 10/31/2024

09-08 Seneca Valley High School
 19401 Crystal Rock Dr
 Germantown, MD 20874

CAFETERIA

- | | |
|-----------|---------------|
| 12 | Voting Booths |
| 9 | Seated Voting |
| 4 | Poll Books |
| 3 | BMDs |
| 2 | Scanners |

RECOMMENDED ROOM LAYOUT



- | | | | | | |
|--|--|--|---|--|----------------|
| | 6'X2 1/2' Table | | Ballot Marking Device | | 1 Voter Travel |
| | Voting Booths with 2 1/2'X5' clearance | | Vending Machine | | 2 plug outlet |
| | Transfer Cart | | Electronic Poll Book | | Fire alarm |
| | Window | | Scanner | | Column |
| | | | Scanner Judge stands
2 - 3 feet from scanner | | |

Montgomery County
 Board of Elections
 9/12/2024

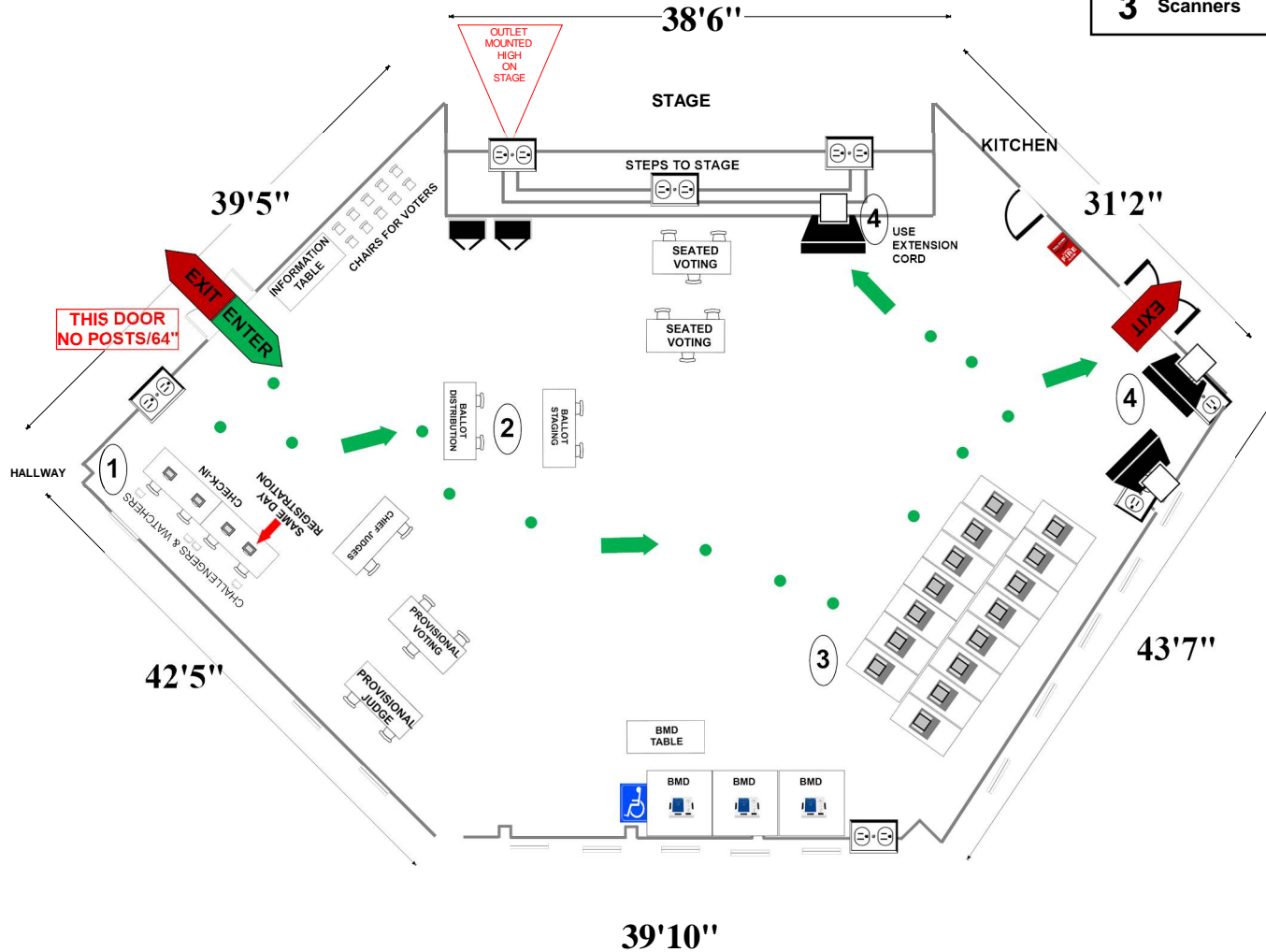
09-09 Whetstone Elementary School

19201 Thomas Farm Rd.
Gaithersburg, MD 20879

RECOMMENDED ROOM LAYOUT

ALL-PURPOSE ROOM

- | | |
|-----------|---------------|
| 15 | Voting Booths |
| 6 | Seated Voting |
| 5 | Poll Books |
| 3 | BMDs |
| 3 | Scanners |



- | | | | | | |
|--|-------------------------------------|--|----------------------|--|---------------|
| | 6'X2½' Table | | BMD | | Voter Travel |
| | Voting Booths with 2½'X5' clearance | | Vending Machine | | 2 plug outlet |
| | Scanner | | Electronic Poll Book | | Fire alarm |
| | Window | | Black Transfer Cart | | |

Montgomery County
Board of Elections
10/07/2024

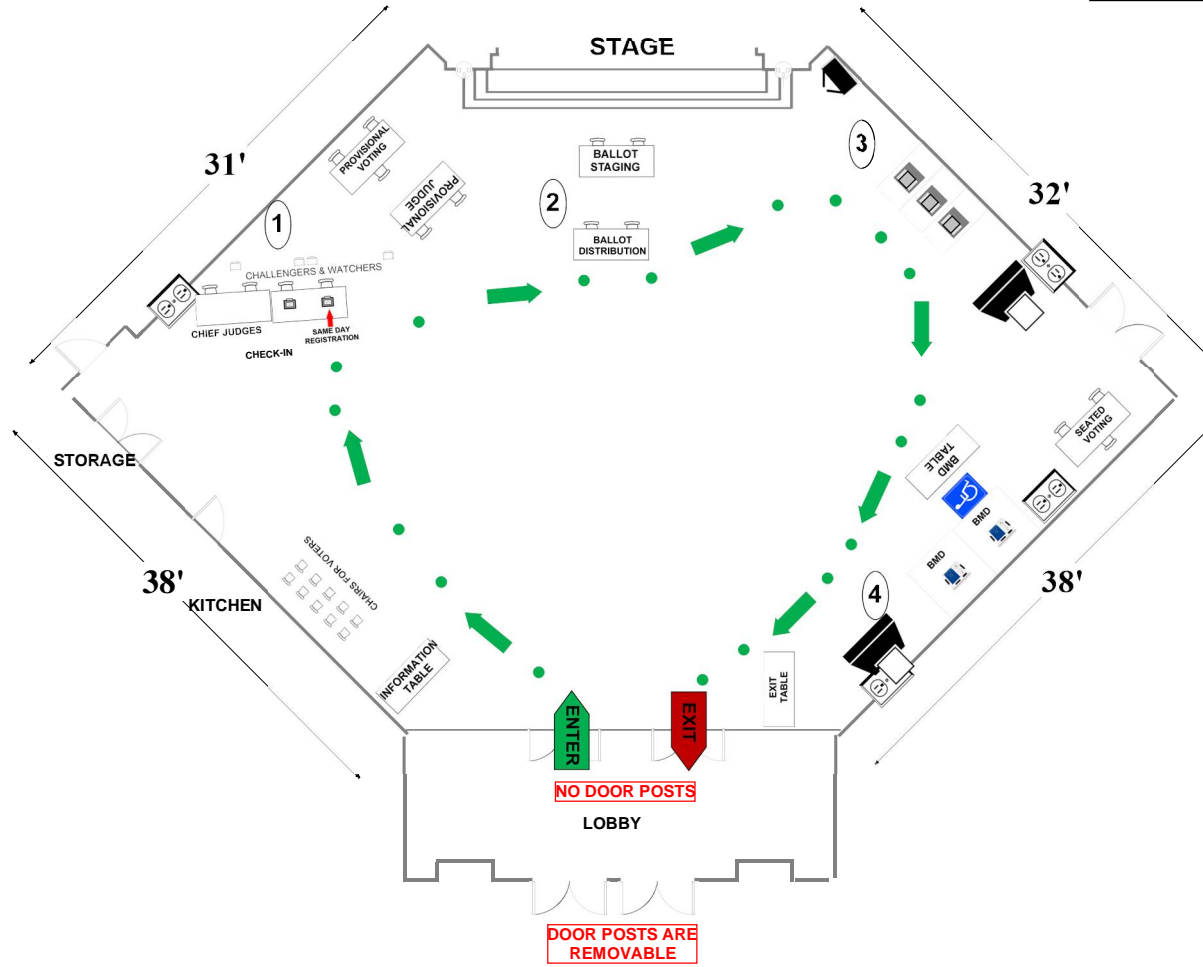
09-10/09-43 Washington Grove Elementary School

8712 Oakmont St
Gaithersburg, MD 20877

RECOMMENDED ROOM LAYOUT

ALL-PURPOSE ROOM

- 3** Voting Booths
- 3** Seated Voting
- 2** Poll Books
- 2** BMDs
- 2** Scanners



- | | | | | | |
|--|--|--|-----------------------|--|----------------|
| | 6'X2 1/2' Table | | Ballot Marking Device | | 1 Voter Travel |
| | Voting Booths with 2 1/2'X5' clearance | | Vending Machine | | 2 plug outlet |
| | Transfer Cart | | Electronic Poll Book | | Fire alarm |
| | Window | | Scanner | | |
- Scanner Judge stands**
2 - 3 feet from scanner

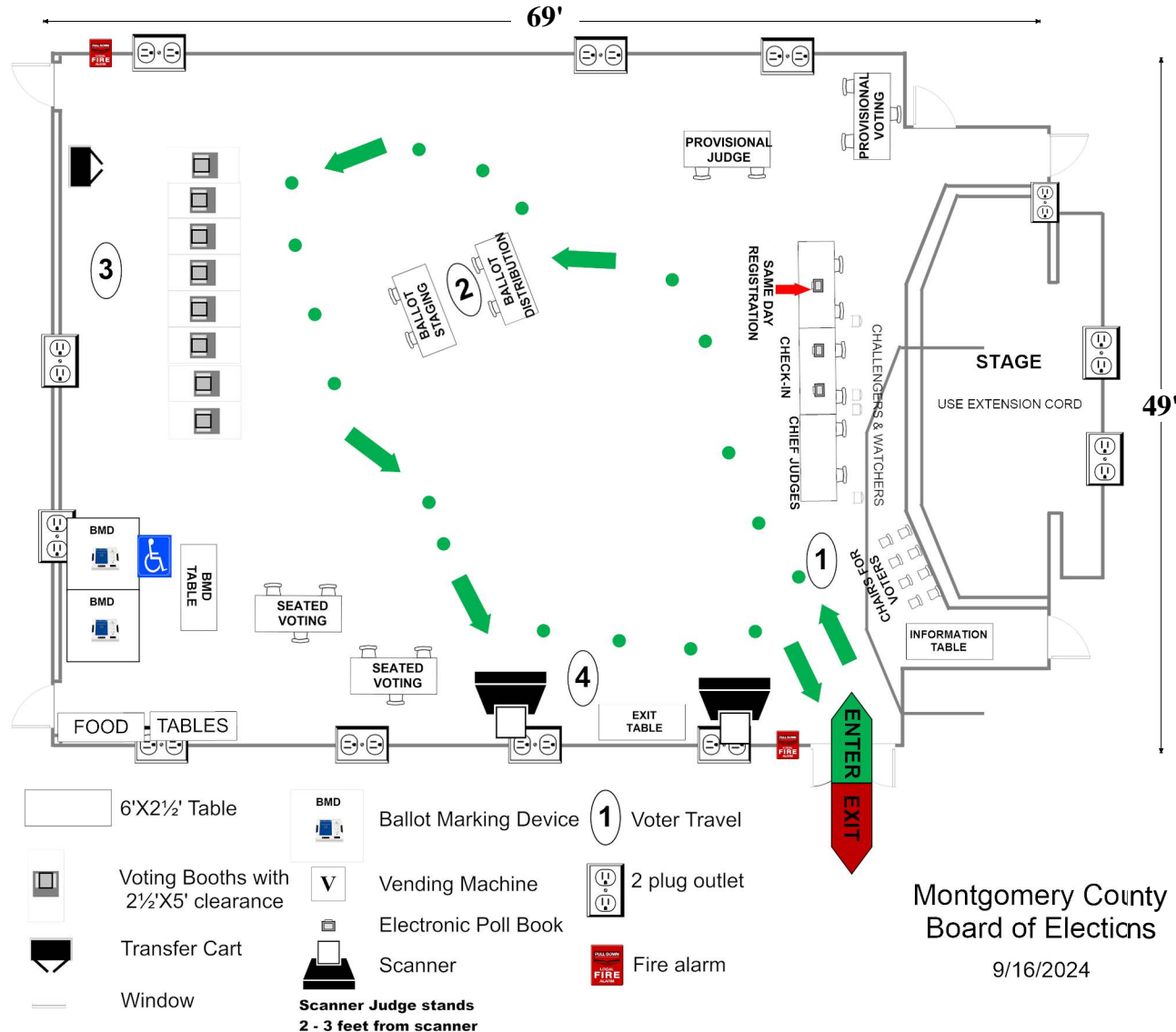
Montgomery County
Board of Elections
10/15/2024

09-11 Stedwick Elementary School
 10631 Stedwick Road
 Montgomery Village, MD 20886

RECOMMENDED ROOM LAYOUT

ALL-PURPOSE ROOM

- 8** Voting Booths
- 6** Seated Voting
- 3** Poll Books
- 2** BMDs
- 2** Scanners



Montgomery County
 Board of Elections

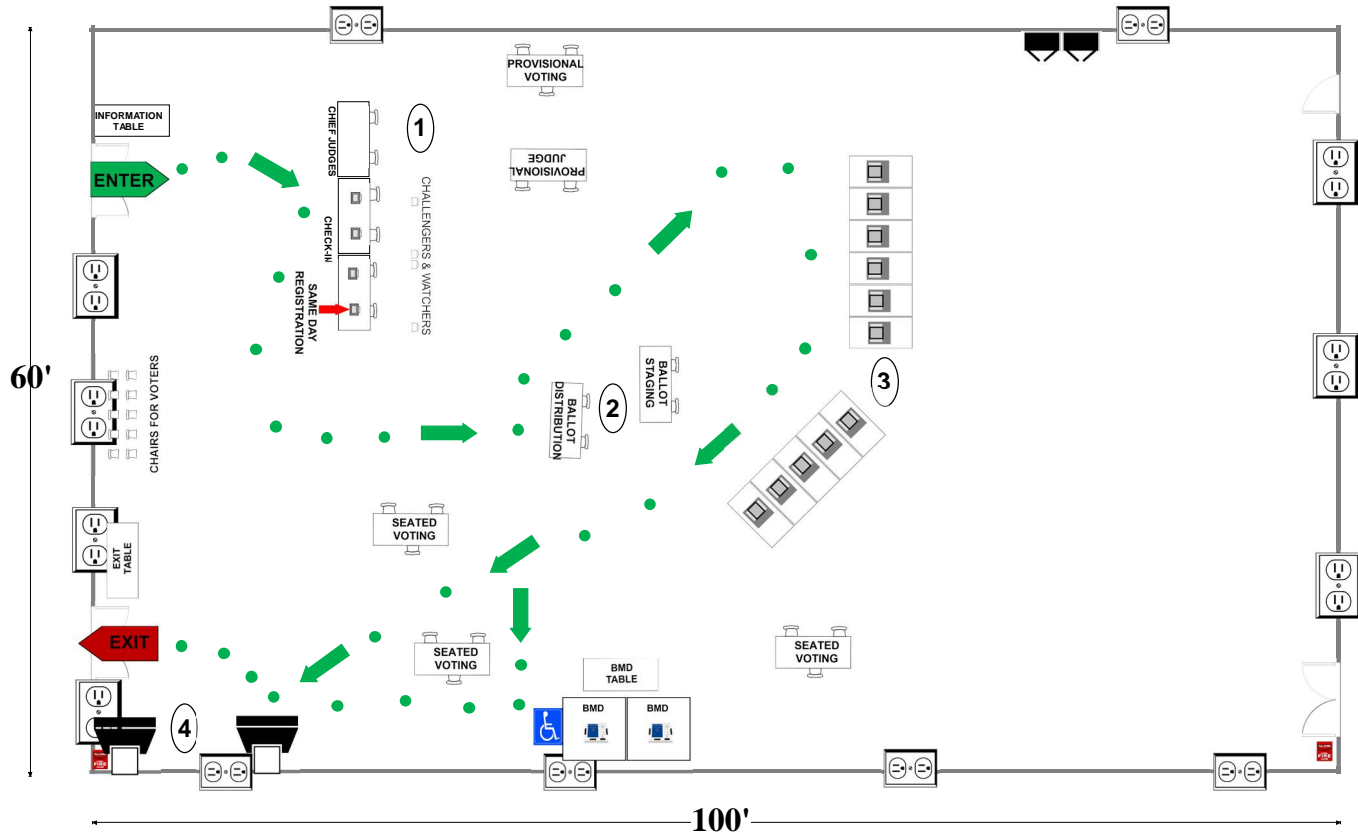
9/16/2024

09-12/09-42 Watkins Mill High School
 10301 Apple Ridge Rd
 Gaithersburg, MD 20879

AUXILIARY GYM

RECOMMENDED ROOM LAYOUT

- 11** Voting Booths
- 9** Seated Voting
- 4** Poll Books
- 2** BMDs
- 2** Scanners



- 6'X2 1/2' Table
- Voting Booths with 2 1/2'X5' clearance
- Transfer Cart
- Window
- Ballot Marking Device
- Vending Machine
- Electronic Poll Book
- Scanner
- Scanner Judge stands**
2 - 3 feet from scanner
- 1 Voter Travel
- 2 plug outlet
- Fire alarm

Montgomery County
 Board of Elections

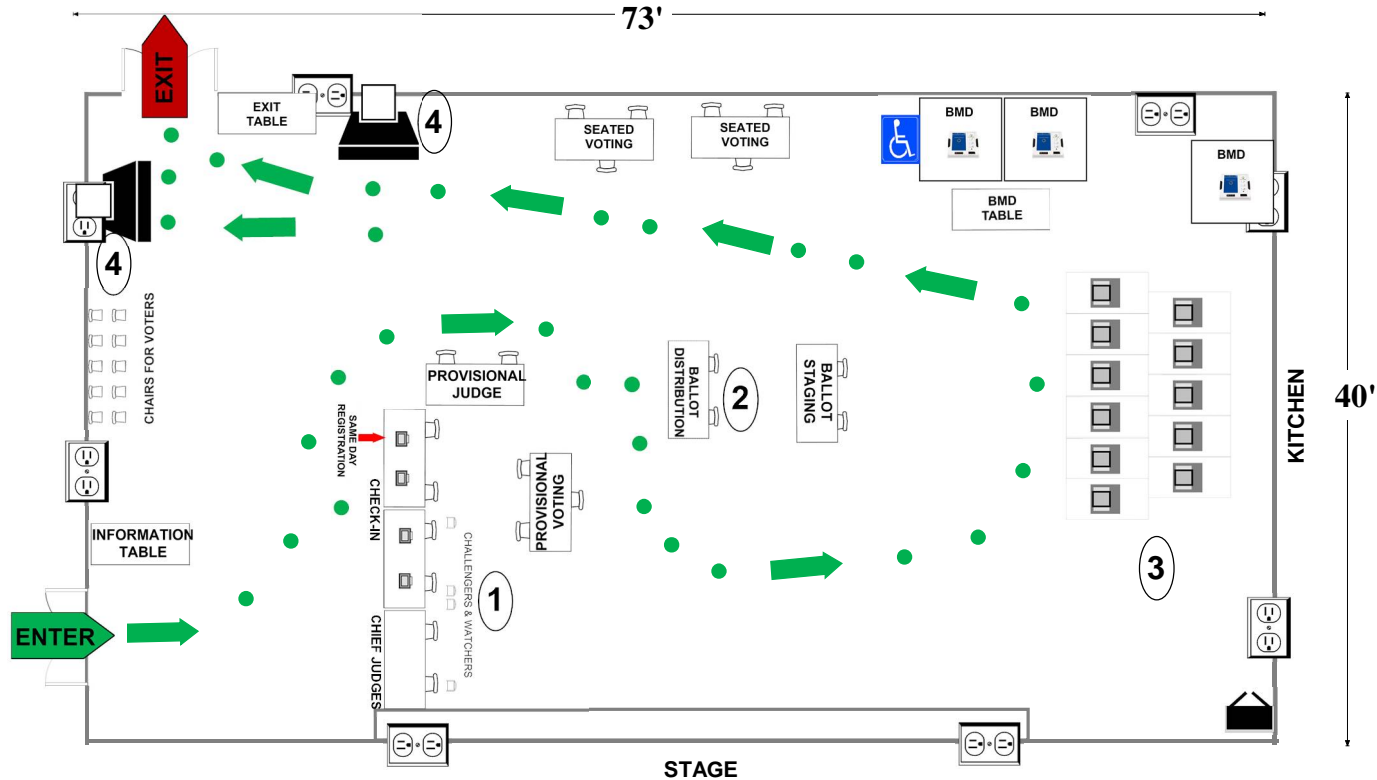
9/16/2024

09-13 Diamond Elementary School
 4 Marquis Dr
 Gaithersburg, MD 20878

ALL-PURPOSE ROOM

RECOMMENDED ROOM LAYOUT

- | | |
|-----------|---------------|
| 11 | Voting Booths |
| 6 | Seated Voting |
| 4 | Poll Books |
| 3 | BMDs |
| 2 | Scanners |



- | | | | | | |
|--|--|--|-----------------------|----------|---------------|
| | 6'X2 1/2' Table | | Ballot Marking Device | 1 | Voter Travel |
| | Voting Booths with 2 1/2'X5' clearance | | Vending Machine | | 2 plug outlet |
| | Transfer Cart | | Electronic Poll Book | | Scanner |
| | Window | | Fire alarm | | |
- Scanner Judge stands**
 2 - 3 feet from scanner

Montgomery County
 Board of Elections
 9/16/2024

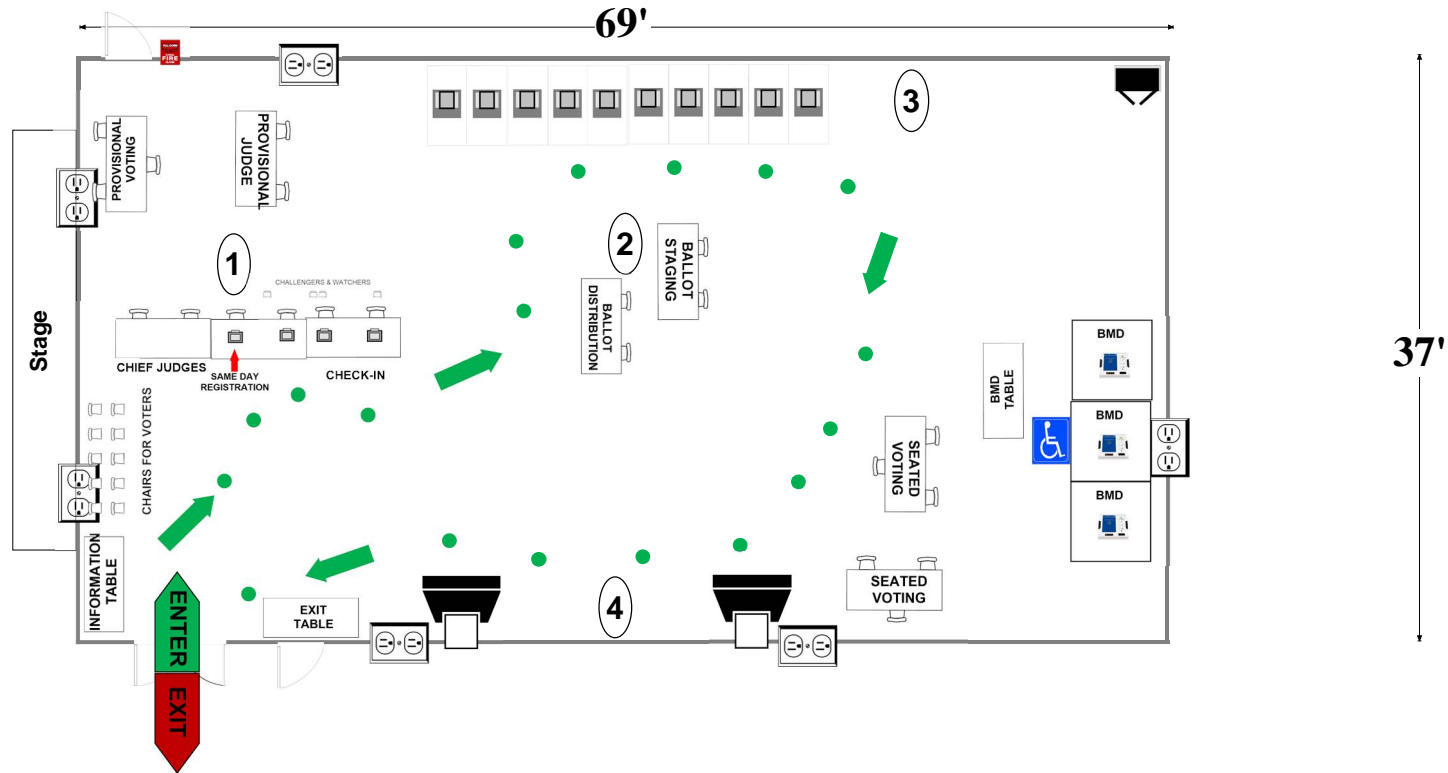
09-14 Neighborhood (Derwood Alliance) Church

16501 Redland Rd
Rockville, MD 20855

SANCTUARY

RECOMMENDED ROOM LAYOUT

- | | |
|-----------|---------------|
| 10 | Voting Booths |
| 6 | Seated Voting |
| 4 | Poll Books |
| 3 | BMDs |
| 2 | Scanners |



- | | | | | | |
|--|--|--|---|--|----------------|
| | 6'X2 1/2' Table | | Ballot Marking Device | | 1 Voter Travel |
| | Voting Booths with 2 1/2'X5' clearance | | Vending Machine | | 2 plug outlet |
| | Transfer Cart | | Electronic Poll Book | | Scanner |
| | Window | | Scanner Judge stands
2 - 3 feet from scanner | | Fire alarm |

Montgomery County
Board of Elections
9/16/2024

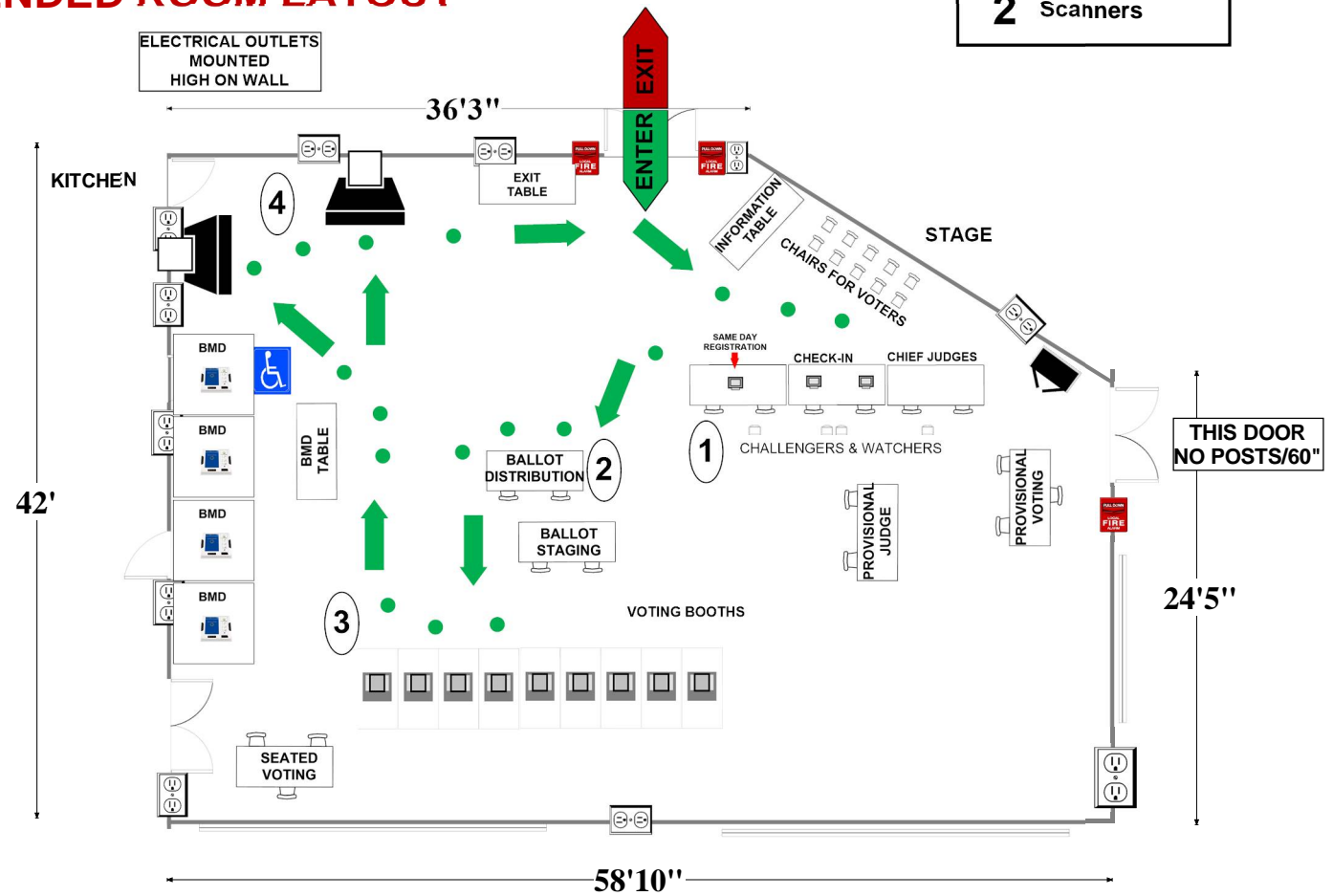
09-15 Watkins Mill Elementary School

19001 Watkins Mill Rd.

Montgomery Village, MD 20886

RECOMMENDED ROOM LAYOUT

- 9** Voting Booths
- 3** Seated Voting
- 3** Poll Books
- 4** BMDs
- 2** Scanners



	6'X2½' Table		Ballot Marking Device		Voter Travel
	Voting Booths with 2½'X5' clearance		Vending Machine		2 plug outlet
	Transfer Cart		Electronic Poll Book		Fire alarm
	Window		Scanner		
		Scanner Judge stands			
		2 - 3 feet from scanner			

Montgomery County Board of Elections

10/14/2024

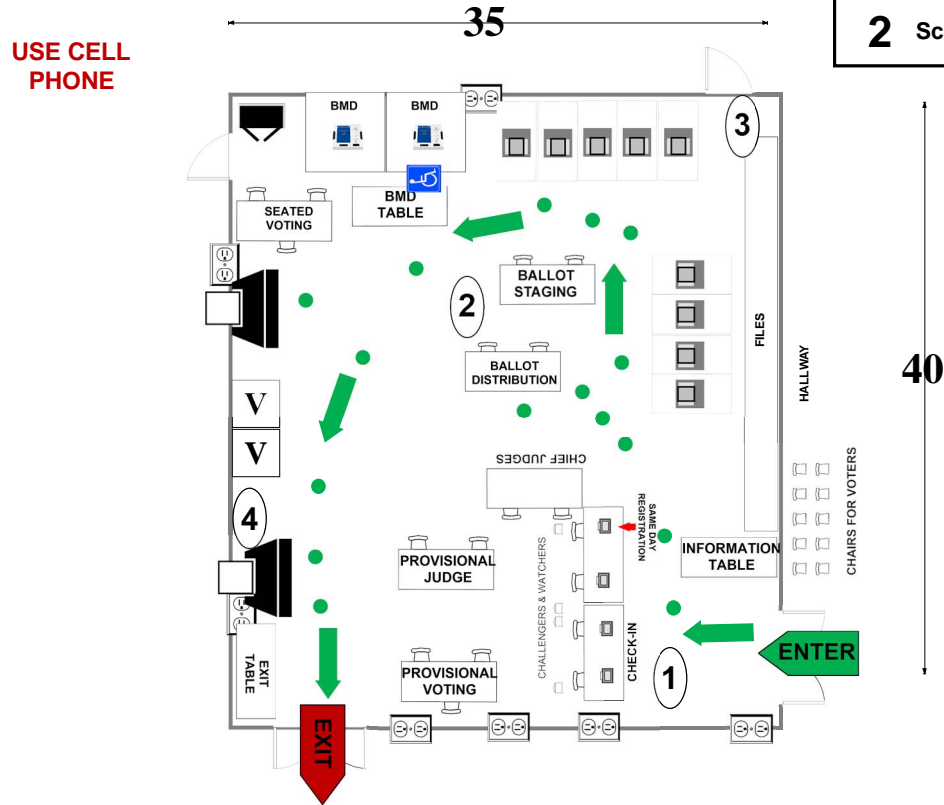
09-16 WSSC Gaithersburg Depot

111 W. Diamond Ave
Gaithersburg, MD 20877

MULTIPURPOSE ROOM

RECOMMENDED ROOM LAYOUT

- | | |
|----------|---------------|
| 9 | Voting Booths |
| 3 | Seated Voting |
| 4 | Poll Books |
| 2 | BMDs |
| 2 | Scanners |



- | | | | | | |
|--|--|--|---|--|---------------|
| | 6'X2 1/2' Table | | Ballot Marking Device | | Voter Travel |
| | Voting Booths with 2 1/2'X5' clearance | | Vending Machine | | 2 plug outlet |
| | Transfer Cart | | Electronic Poll Book | | Fire alarm |
| | Window | | Scanner | | |
| | | | Scanner Judge stands
2 - 3 feet from scanner | | |

Montgomery County
Board of Elections
9/16/2024

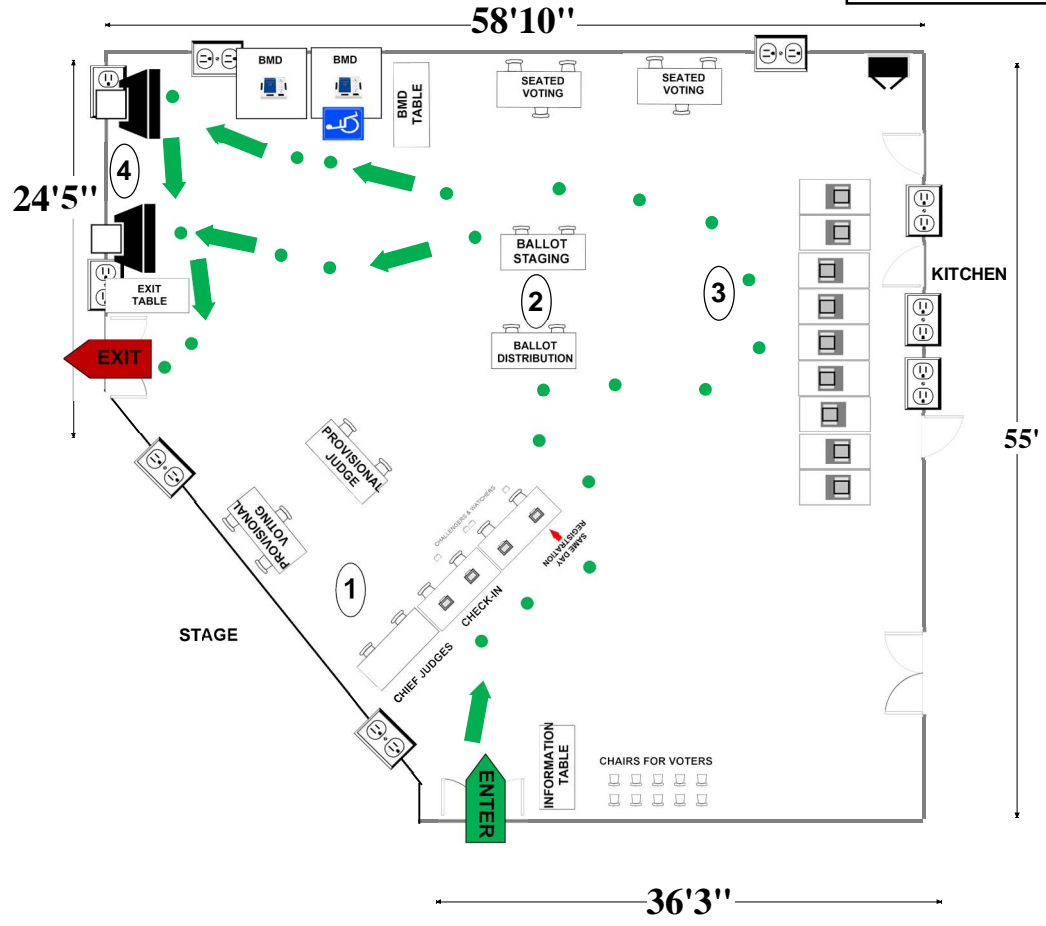
09-18 Fox Chapel Elementary School

19315 Archdale Rd
Germantown, MD 20876

RECOMMENDED ROOM LAYOUT

ALL-PURPOSE ROOM

- 9** Voting Booths
- 6** Seated Voting
- 4** Poll Books
- 2** BMDs
- 2** Scanners



- 6'X2 1/2' Table
- Voting Booths with 2 1/2'X5' clearance
- Transfer Cart
- Window
- Ballot Marking Device
- Vending Machine
- Electronic Poll Book
- Scanner
- Scanner Judge stands**
2 - 3 feet from scanner
- 1 Voter Travel
- 2 plug outlet
- Fire alarm

Montgomery County
Board of Elections

10/7/2024

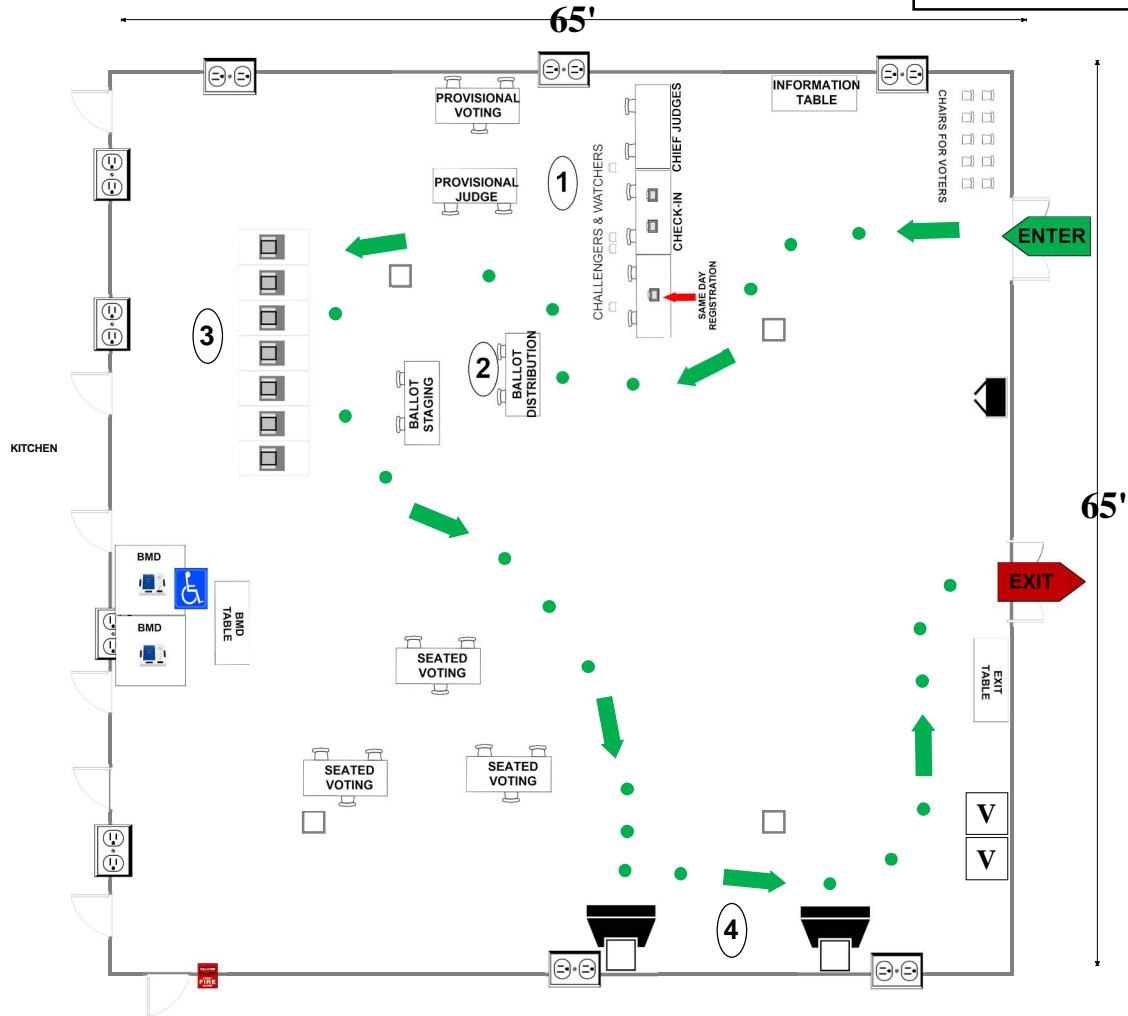
09-20 Gaithersburg Middle School

2 Teachers Way
Gaithersburg, MD 20877

CAFETERIA

RECOMMENDED ROOM LAYOUT

- 7** Voting Booths
- 9** Seated Voting
- 3** Poll Books
- 2** BMDs
- 2** Scanners



- | | | | | | |
|--|--|--|---|--|---------------|
| | 6'X2 1/2' Table | | Ballot Marking Device | | Voter Travel |
| | Voting Booths with 2 1/2'X5' clearance | | Vending Machine | | 2 plug outlet |
| | Transfer Cart | | Electronic Poll Book | | Fire alarm |
| | Window | | Scanner | | Column |
| | | | Scanner Judge stands
2 - 3 feet from scanner | | |

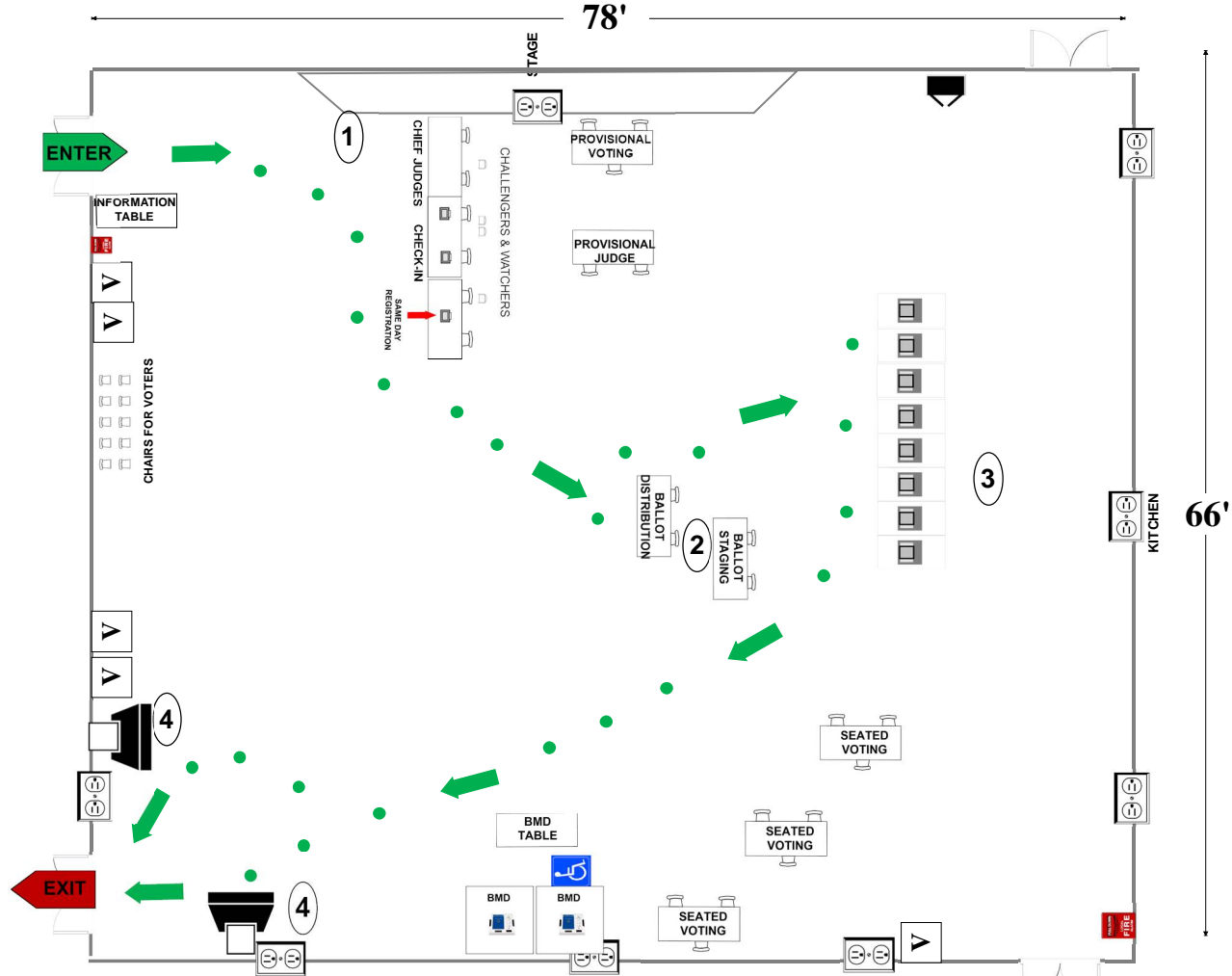
Montgomery County
Board of Elections
9/16/2024

09-21 Forest Oak Middle School
 651 Saybrooke Oaks Blvd.
 Gaithersburg, MD 20877

CAFETERIA

RECOMMENDED ROOM LAYOUT

- 8** Voting Booths
- 9** Seated Voting
- 3** Poll Books
- 2** BMDs
- 2** Scanners



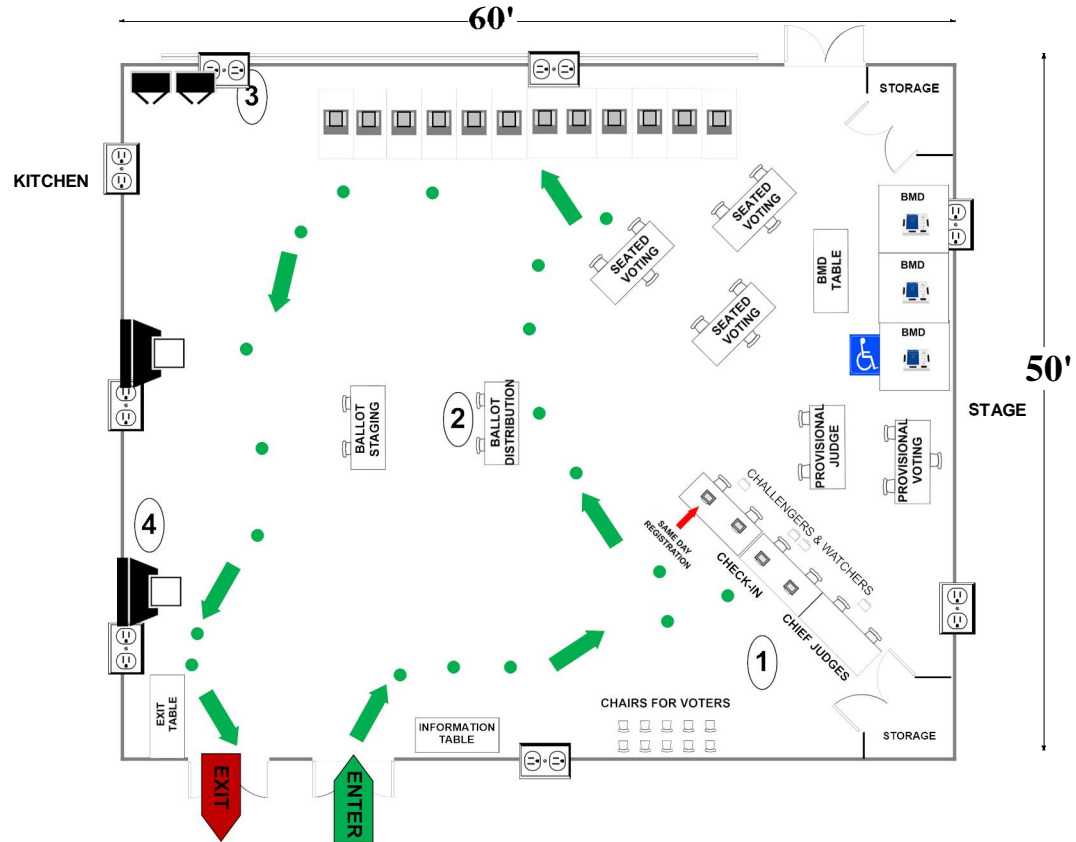
Montgomery County
 Board of Elections
 9/16/2024

09-22 Strawberry Knoll Elementary School
 1820 Strawberry Knoll Rd
 Gaithersburg, MD 20879

ALL-PURPOSE ROOM

- 12** Voting Booths
- 9** Seated Voting
- 4** Poll Books
- 3** BMDs
- 2** Scanners

RECOMMENDED ROOM LAYOUT



- 6'X2 1/2' Table
- Voting Booths with 2 1/2'X5' clearance
- Transfer Cart
- Window
- Ballot Marking Device
- Vending Machine
- Electronic Poll Book
- Scanner
- Scanner Judge stands
2 - 3 feet from scanner**
- 1 Voter Travel
- 2 plug outlet
- Fire alarm

Montgomery County
 Board of Elections

9/16/2024

09-24 St. Rose of Lima Parish Center

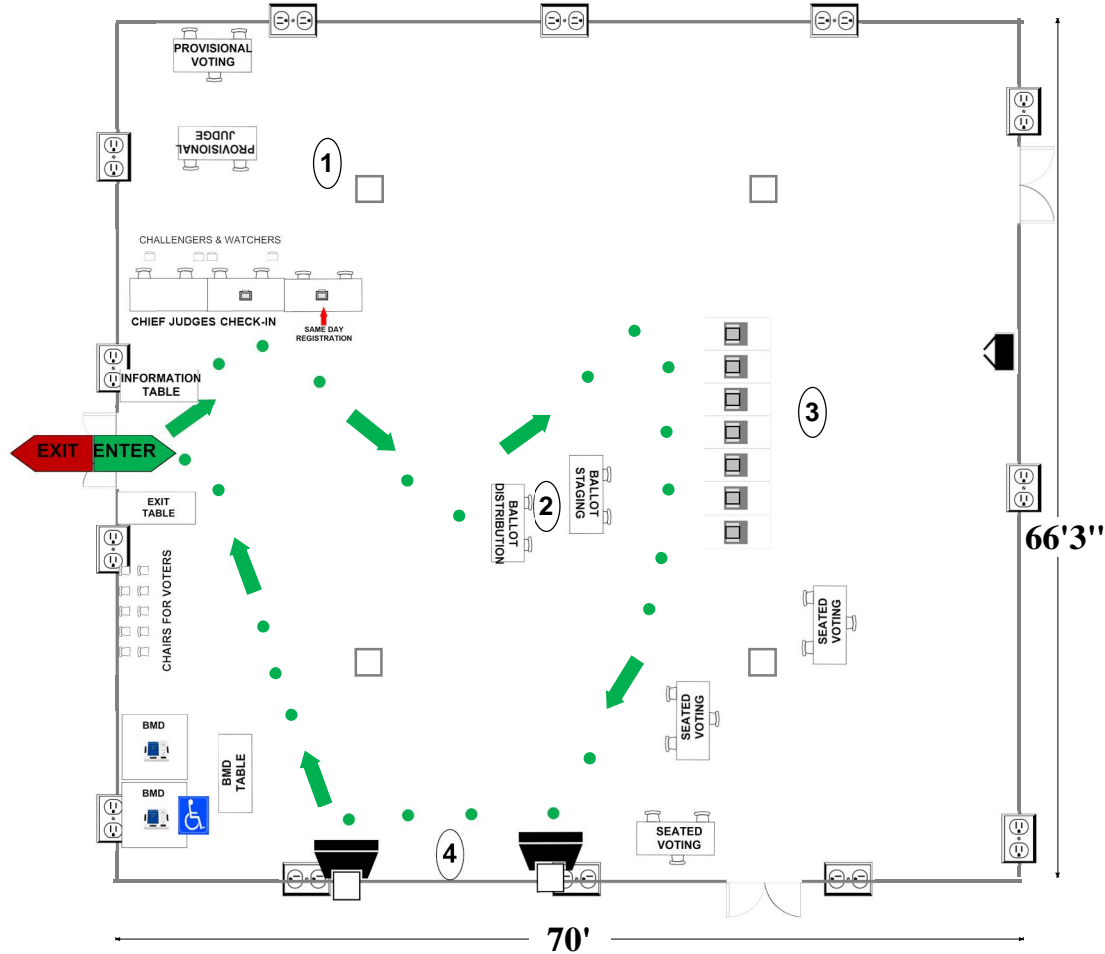
11701 Clopper Rd

Gaithersburg, MD 20878

PARISH CENTER

RECOMMENDED ROOM LAYOUT

- 7** Voting Booths
- 9** Seated Voting
- 2** Poll Books
- 2** BMDs
- 2** Scanners



- 6'x2 1/2' Table
- BMD Ballot Marking Device
- 1 Voter Travel
- Voting Booths with 2 1/2'x5' clearance
- Vending Machine
- 2 plug outlet
- Transfer Cart
- Electronic Poll Book
- Fire alarm
- Scanner
- Column
- Window
- Scanner Judge stands**
2 - 3 feet from scanner

Montgomery County
Board of Elections

9/16/2024

09-25 Dr. Sally K. Ride Elementary School

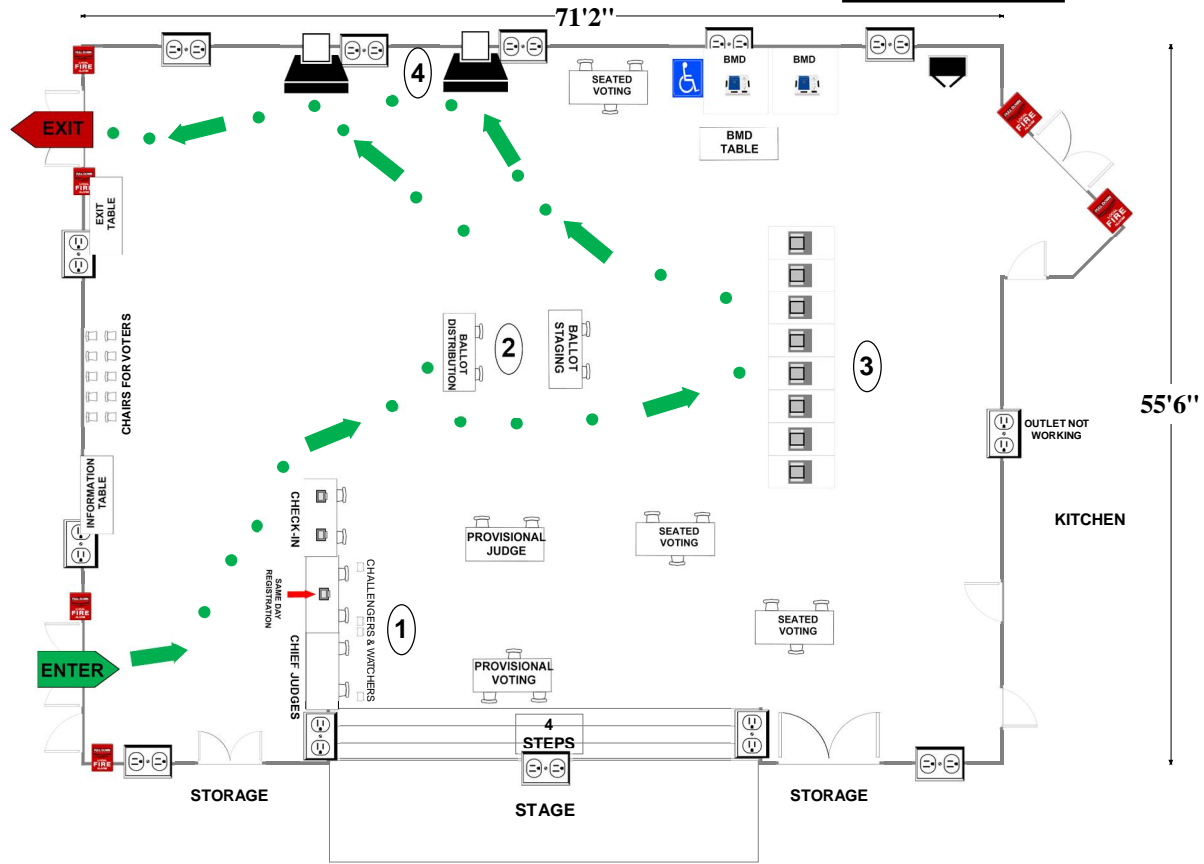
21301 Seneca Crossing Dr

Germantown, MD 20876

RECOMMENDED ROOM LAYOUT

ALL-PURPOSE ROOM

- 8** Voting Booths
- 9** Seated Voting
- 3** Poll Books
- 2** BMDs
- 2** Scanners



- 6'x2 1/2' Table
- Voting Booths with 2 1/2'x5' clearance
- Transfer Cart
- Window
- Ballot Marking Device
- Vending Machine
- Electronic Poll Book
- Scanner
- Scanner Judge stands**
2 - 3 feet from scanner
- 1 Voter Travel
- 2 plug outlet
- Fire alarm

Montgomery County
Board of Elections
9/16/2024

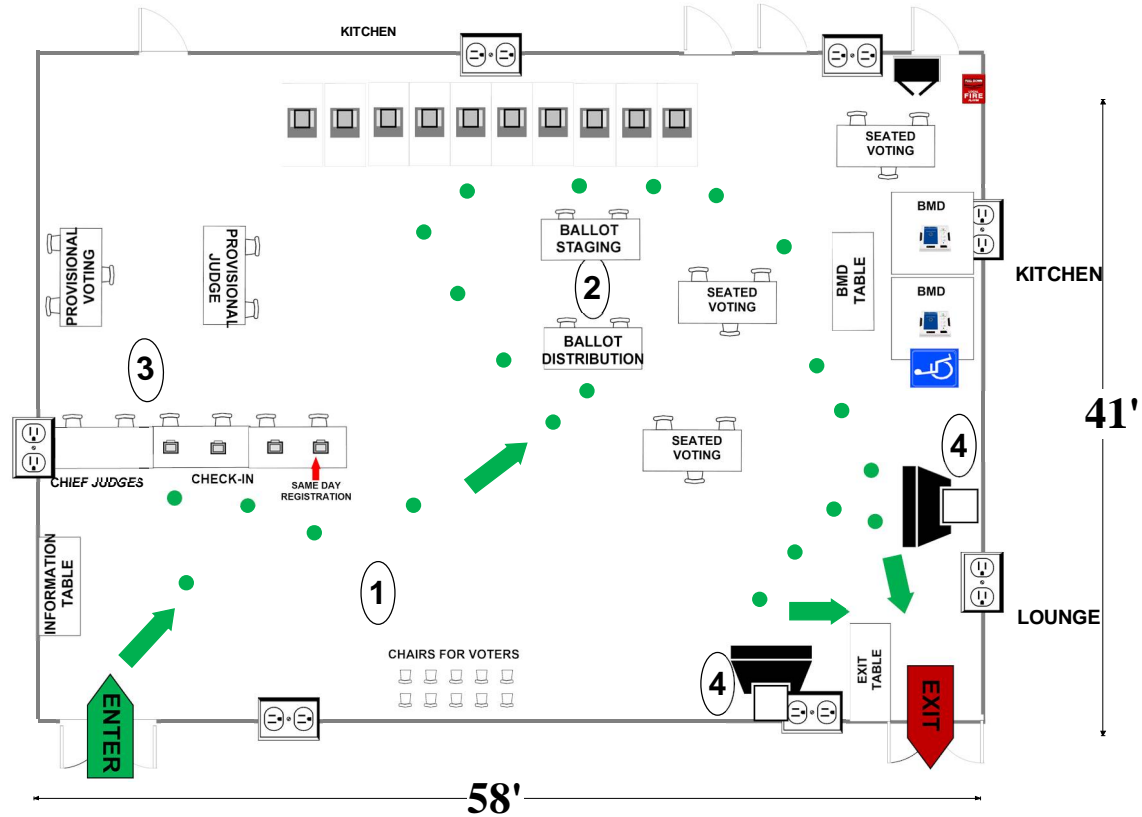
09-26 Clopper Mill Elementary School

18501 Cinnamon Dr
Germantown, MD 20874

ALL-PURPOSE ROOM

RECOMMENDED ROOM LAYOUT

- | | |
|-----------|---------------|
| 10 | Voting Booths |
| 9 | Seated Voting |
| 4 | Poll Books |
| 2 | BMDs |
| 2 | Scanners |



- | | | | | | |
|--|--|--|---|--|---------------|
| | 6'X2 1/2' Table | | BMD | | Voter Travel |
| | Voting Booths with 2 1/2'X5' clearance | | Vending Machine | | 2 plug outlet |
| | Transfer Cart | | Electronic Poll Book | | Scanner |
| | Window | | Scanner Judge stands
2 - 3 feet from scanner | | Fire alarm |

Montgomery County
Board of Elections
9/16/2024

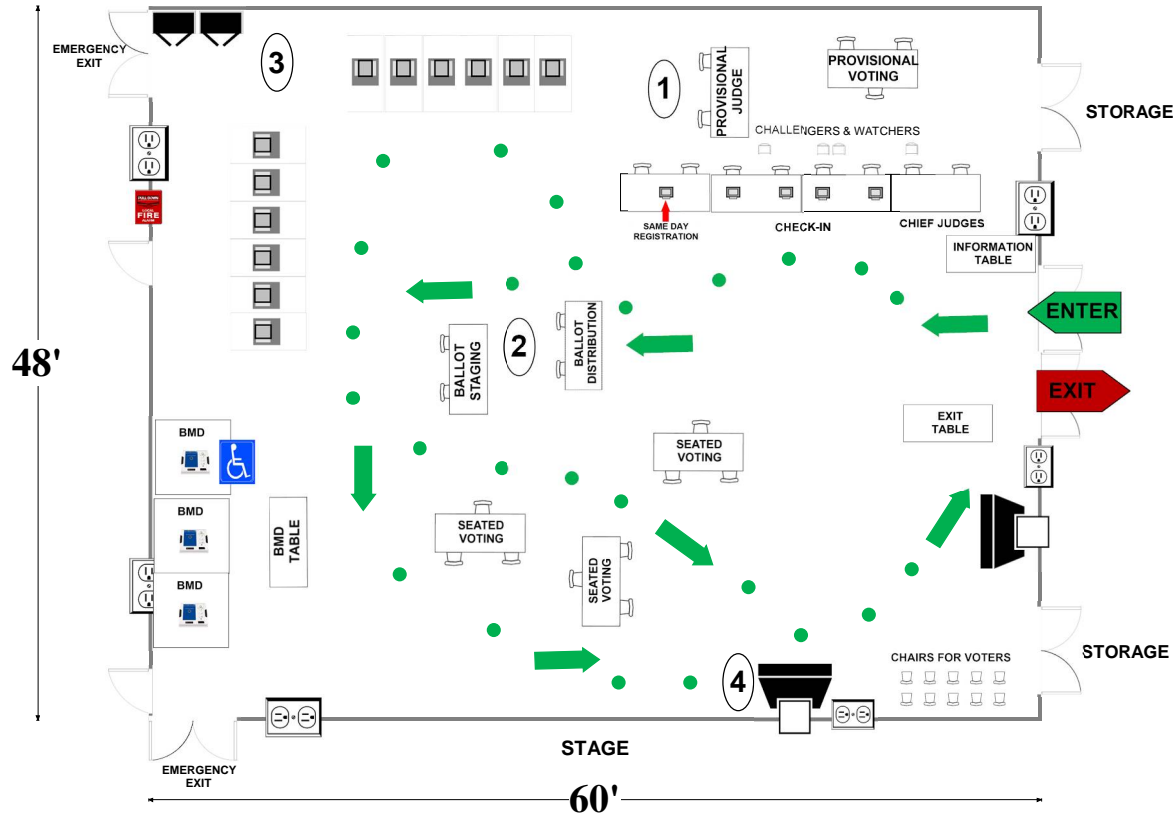
09-27 Rachel Carson Elementary School

100 Tschiffely Square Rd
Gaithersburg, MD 20878

**ALL-PURPOSE
ROOM**

- | | |
|-----------|---------------|
| 12 | Voting Booths |
| 9 | Seated Voting |
| 5 | Poll Books |
| 3 | BMDs |
| 2 | Scanners |

RECOMMENDED ROOM LAYOUT



- | | | | | | |
|--|--|--|---|--|----------------|
| | 6'X2 1/2' Table | | Ballot Marking Device | | 1 Voter Travel |
| | Voting Booths with 2 1/2'X5' clearance | | Vending Machine | | 2 plug outlet |
| | Transfer Cart | | Electronic Poll Book | | Scanner |
| | Window | | Scanner Judge stands
2 - 3 feet from scanner | | Fire alarm |

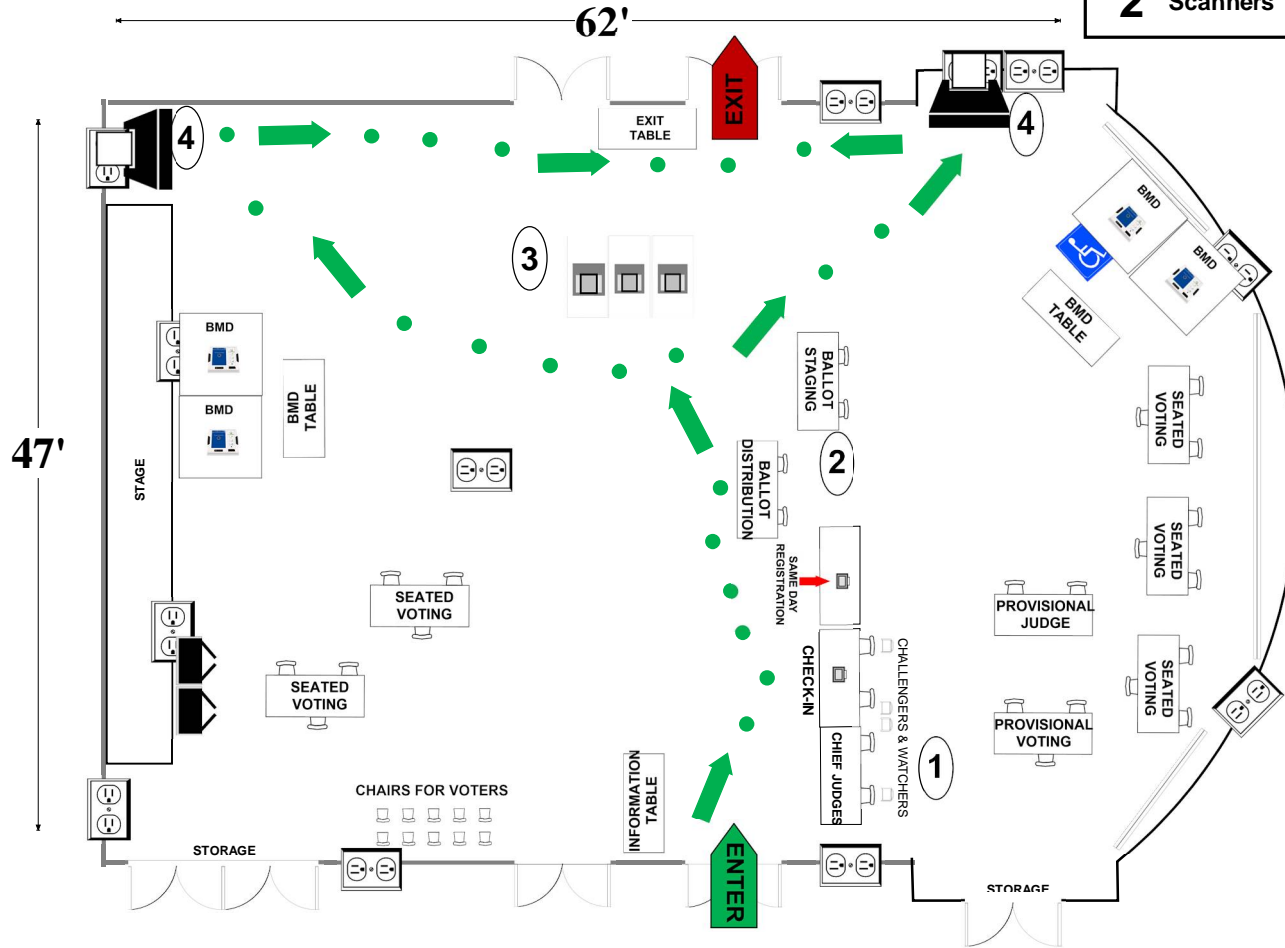
Montgomery County
Board of Elections
9/16/2024








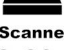

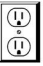

09-28 Asbury Hefner Community Center
 417 Russell Ave
 Gaithersburg, MD 20877

RECOMMENDED ROOM LAYOUT

AUDITORIUM

- 3** Voting Booths
- 15** Seated Voting
- 2** Poll Books
- 4** BMDs
- 2** Scanners



-  6'X2 1/2' Table
-  Voting Booths with 2 1/2'X5' clearance
-  Transfer Cart
-  Window
-  Ballot Marking Device
-  Vending Machine
-  Electronic Poll Book
-  Scanner
- Scanner Judge stands**
2 - 3 feet from scanner
-  1 Voter Travel
-  2 plug outlet
-  Fire alarm

Montgomery County
 Board of Elections

10/14/2024

09-29 Roberto Clemente Middle School

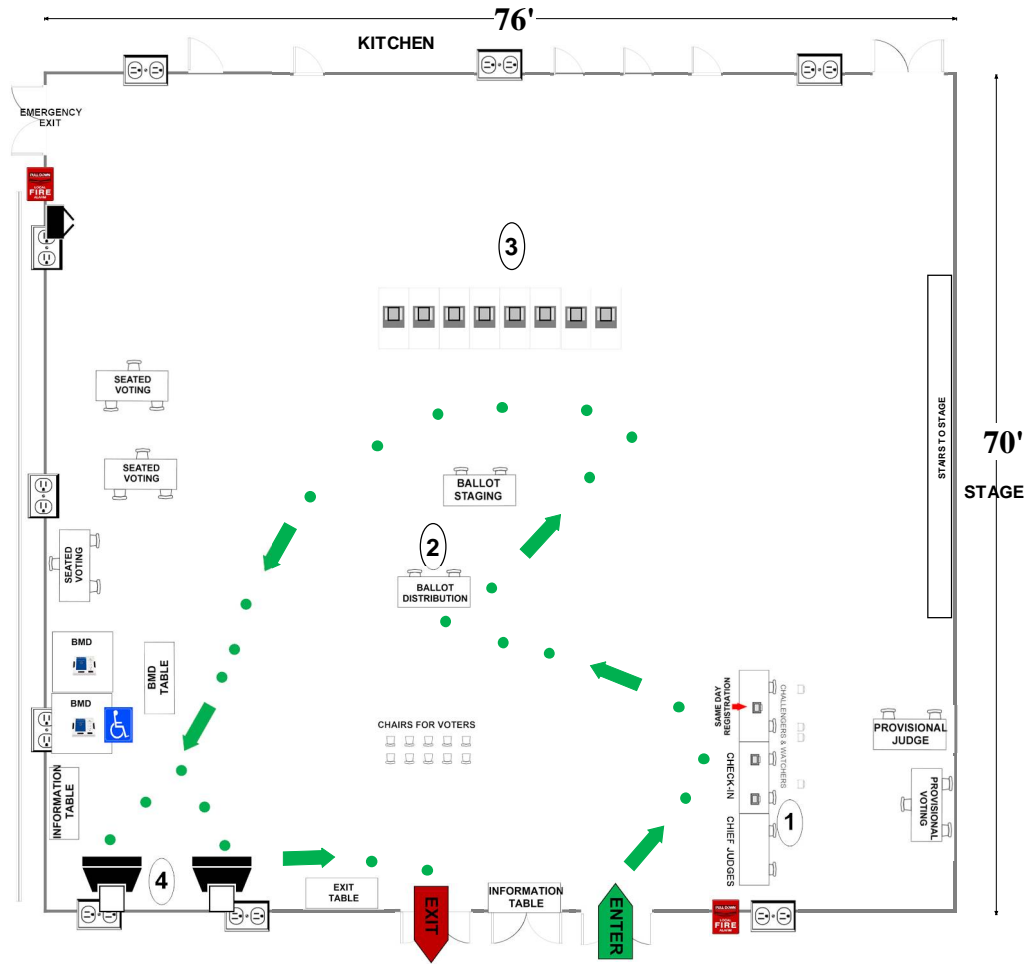
18808 Waring Station Rd

Germantown, MD 20874

RECOMMENDED ROOM LAYOUT

CAFETERIA

- 8** Voting Booths
- 9** Seated Voting
- 3** Poll Books
- 2** BMDs
- 2** Scanners



- 6'X2 1/2' Table
 - Voting Booths with 2 1/2'X5' clearance
 - Transfer Cart
 - Window
 - Ballot Marking Device
 - Vending Machine
 - Electronic Poll Book
 - Scanner
 - 1 Voter Travel
 - 2 plug outlet
 - Fire alarm
- Scanner Judge stands**
2 - 3 feet from scanner

Montgomery County
Board of Elections
9/16/2024

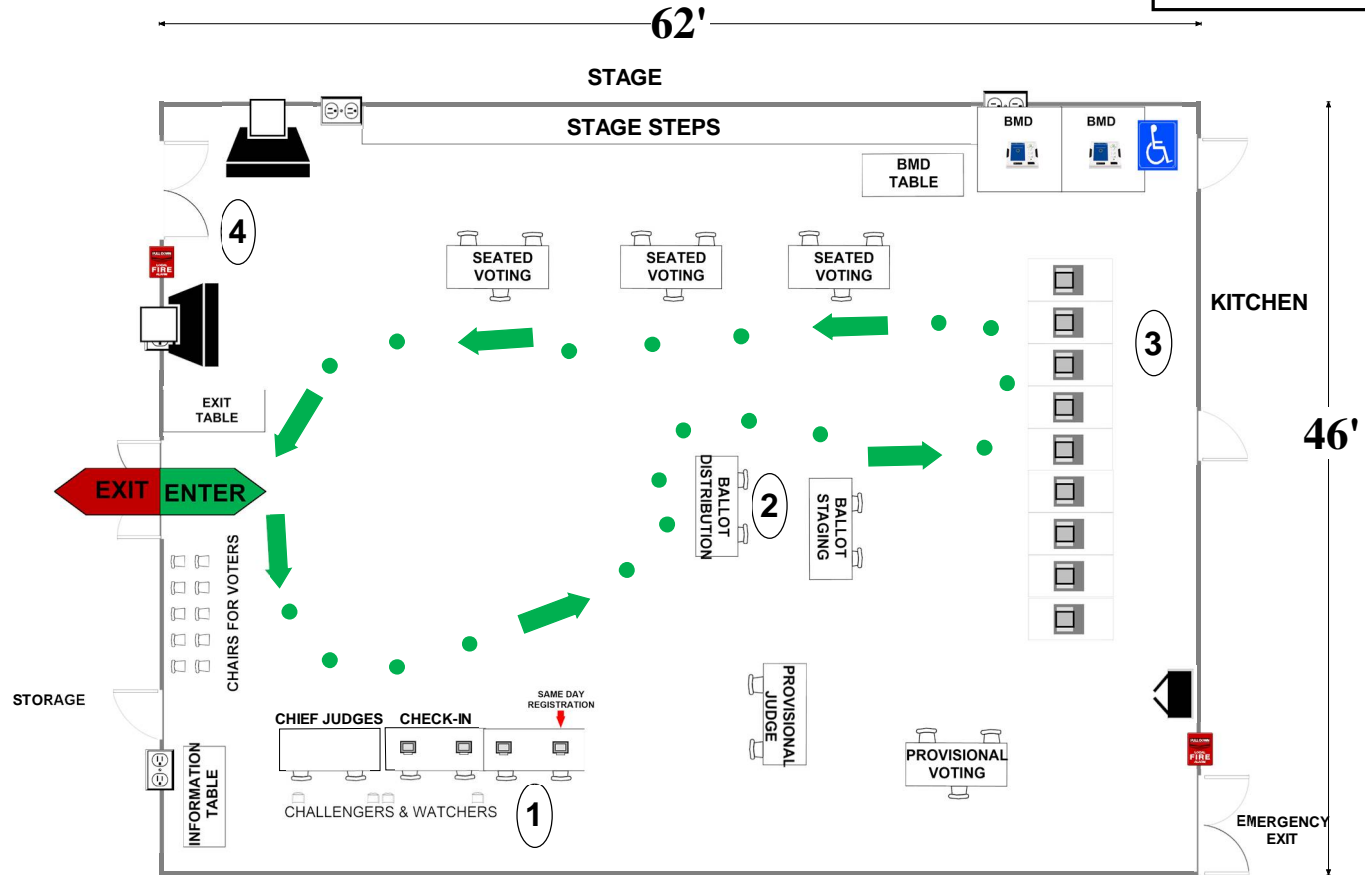
09-30 Captain James E. Daly Elementary School

20301 Brandermill Dr
Germantown, MD 20876

ALL-PURPOSE ROOM

RECOMMENDED ROOM LAYOUT

- 9** Voting Booths
- 9** Seated Voting
- 4** Poll Books
- 2** BMDs
- 2** Scanners



- 6'x2 1/2' Table
- Voting Booths with 2 1/2'x5' clearance
- Transfer Cart
- Window
- Ballot Marking Device
- Vending Machine
- Electronic Poll Book
- Scanner
- 1** Voter Travel
- 2 plug outlet
- Fire alarm
- Scanner Judge stands**
2 - 3 feet from scanner

Montgomery County
Board of Elections

9/16/2024

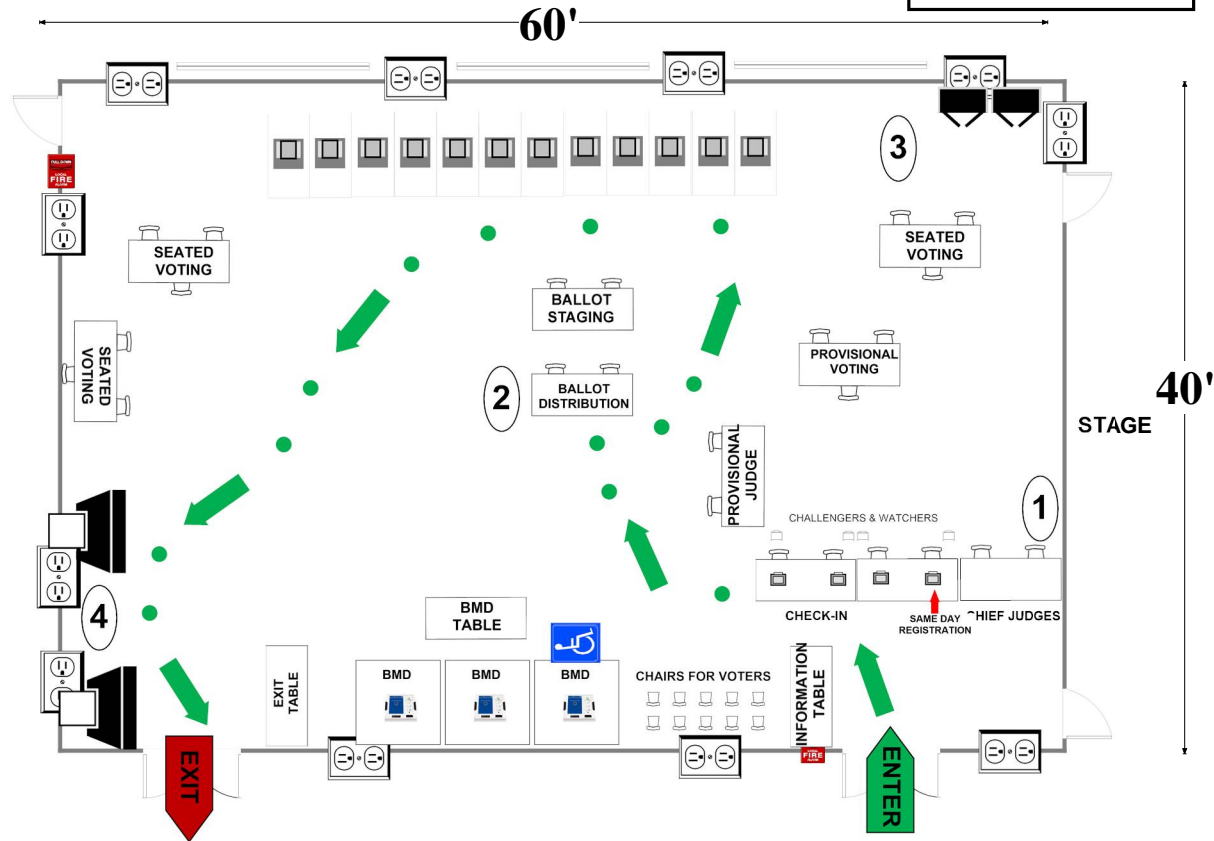
09-31 Rosemont Elementary School







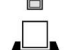
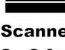



16400 Alden Ave
Gaithersburg, MD 20877

ALL-PURPOSE ROOM

RECOMMENDED ROOM LAYOUT

12	Voting Booths
9	Seated Voting
4	Poll Books
3	BMDs
2	Scanners



-  6'x2 1/2' Table
-  Voting Booths with 2 1/2'x5' clearance
-  Transfer Cart
-  Window
-  Ballot Marking Device
-  Vending Machine
-  Electronic Poll Book
-  Scanner
- Scanner Judge stands
2 - 3 feet from scanner**
-  1 Voter Travel
-  2 plug outlet
-  Fire alarm

Montgomery County
Board of Elections
9/16/2024

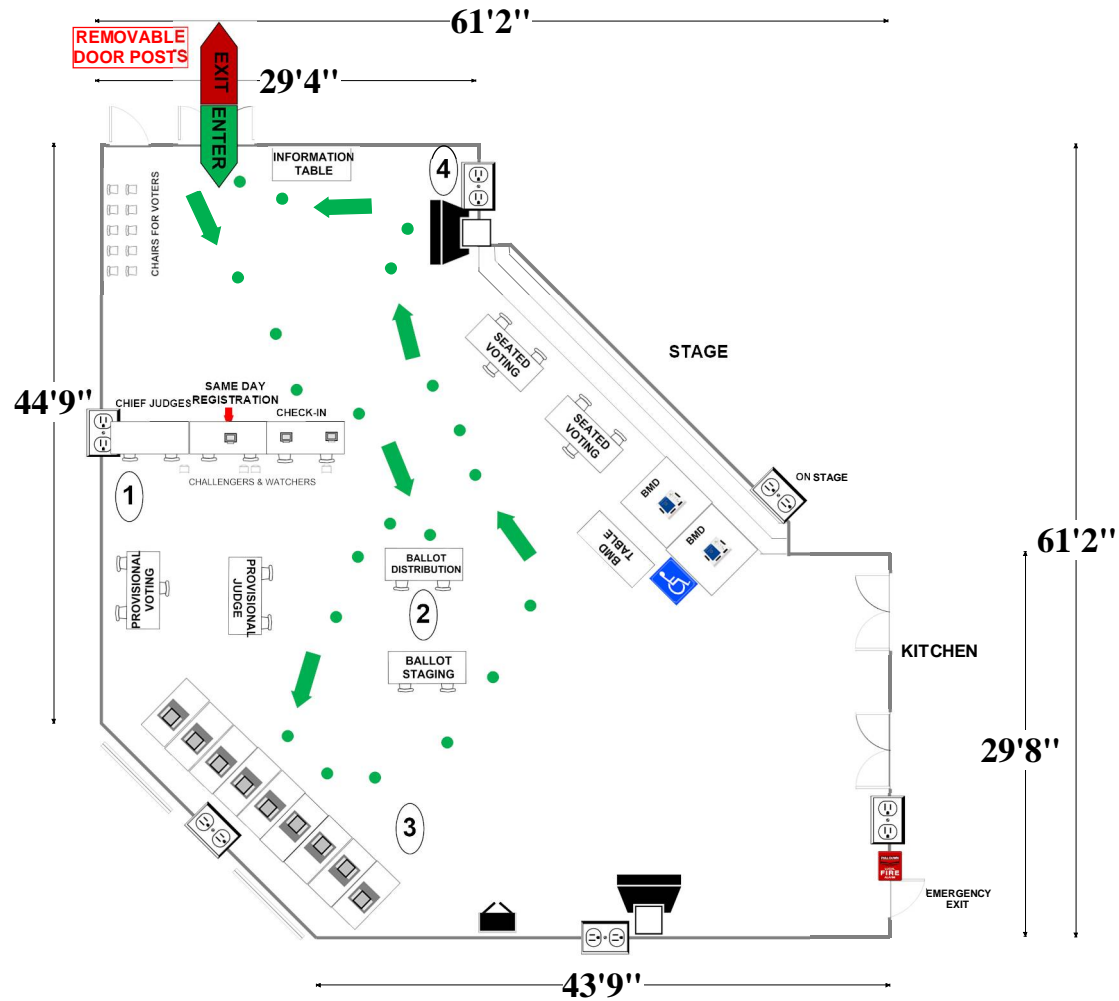
09-33/09-44 Summit Hall Elementary School

101 West Deer Park Rd
Gaithersburg, MD 20877

ALL-PURPOSE ROOM

RECOMMENDED ROOM LAYOUT

- | | |
|---|---------------|
| 9 | Voting Booths |
| 6 | Seated Voting |
| 3 | Poll Books |
| 2 | BMDs |
| 2 | Scanners |



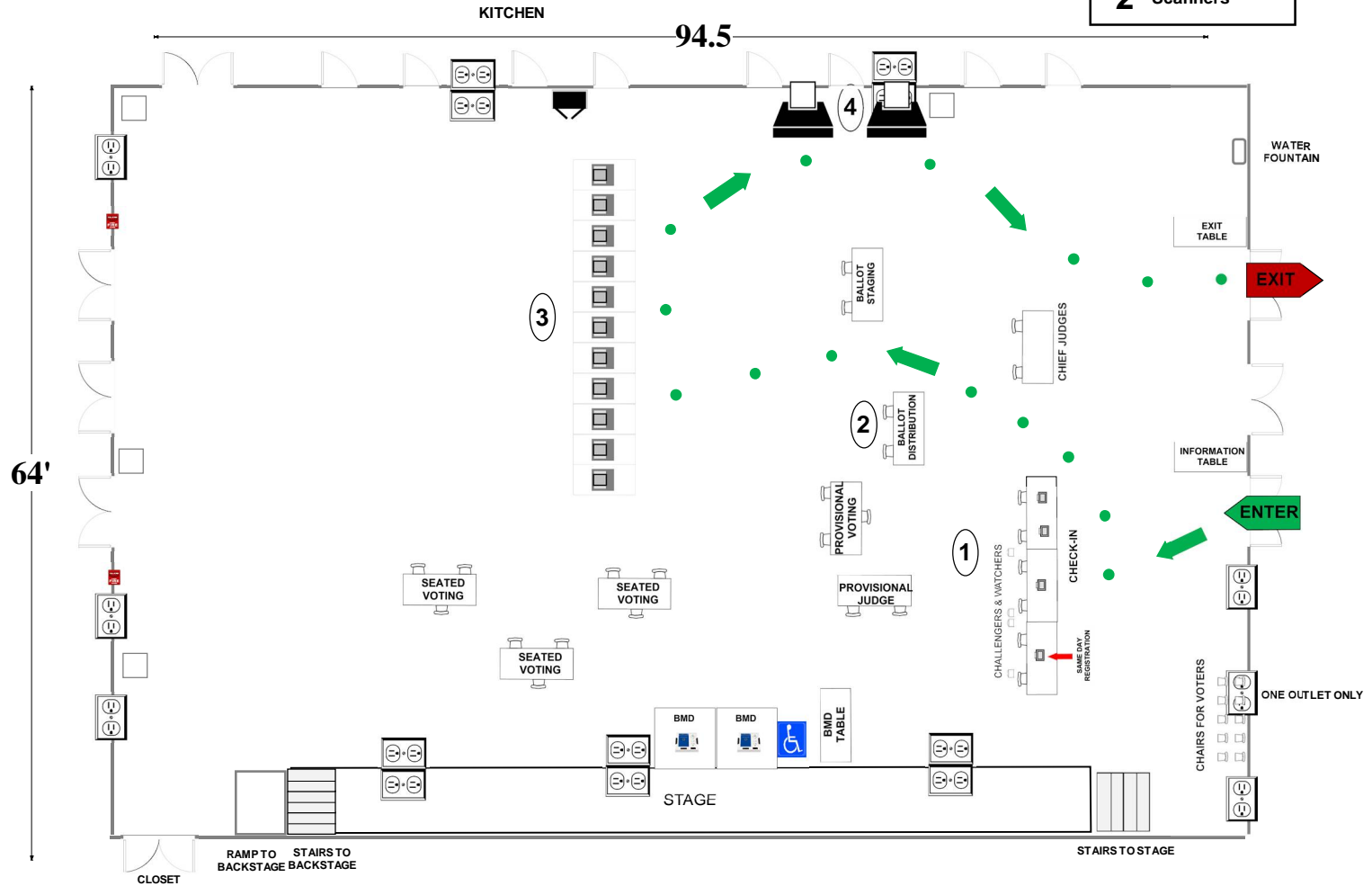
- | | | | | | |
|--|--|--|-----------------------|--|----------------|
| | 6'X2 1/2' Table | | Ballot Marking Device | | 1 Voter Travel |
| | Voting Booths with 2 1/2' X 5' clearance | | Vending Machine | | 2 plug outlet |
| | Scanner | | Electronic Poll Book | | Fire alarm |
| | Window | | Black Transfer Cart | | |

Montgomery County
Board of Elections
9/16/2024

09-34 Neelsville Middle School
 11700 Neelsville Church Rd
 Germantown, MD 20876
RECOMMENDED ROOM LAYOUT

CAFETERIA

- 11** Voting Booths
- 9** Seated Voting
- 4** Poll Books
- 2** BMDs
- 2** Scanners



- 6'X2 1/2' Table
- Voting Booths with 2 1/2'X5' clearance
- Transfer Cart
- Window
- Ballot Marking Device
- Vending Machine
- Electronic Poll Book
- Scanner
- Scanner Judge stands
2 - 3 feet from scanner
- Voter Travel
- 2 plug outlet
- Fire alarm
- Column

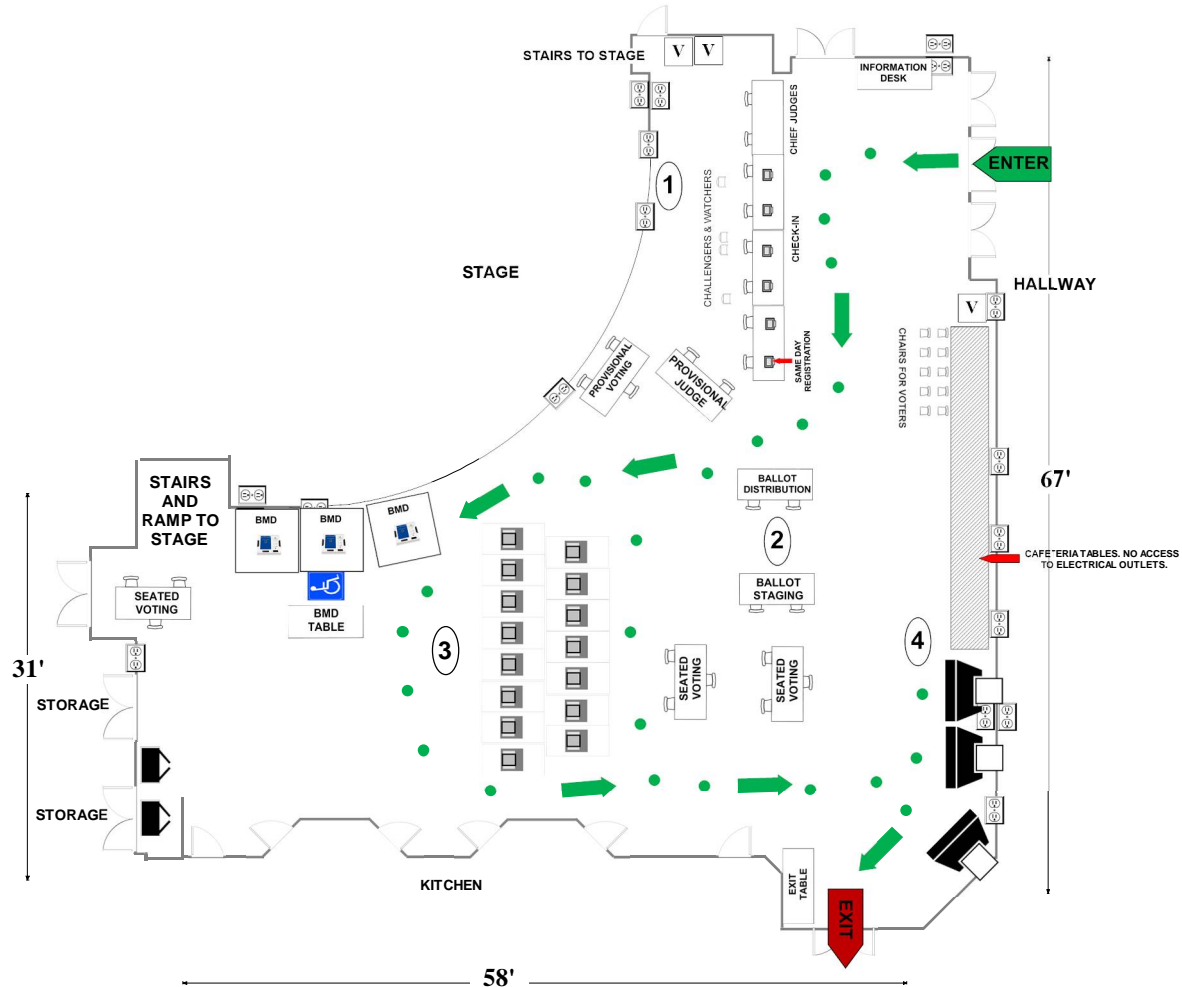
Montgomery County
 Board of Elections
 10/21/2024

09-35 Lakelands Park Middle School
 1200 Main St
 Gaithersburg, MD 20878

CAFETERIA

RECOMMENDED ROOM LAYOUT

- | | |
|-----------|---------------|
| 15 | Voting Booths |
| 9 | Seated Voting |
| 6 | Poll Books |
| 3 | BMDs |
| 3 | Scanners |



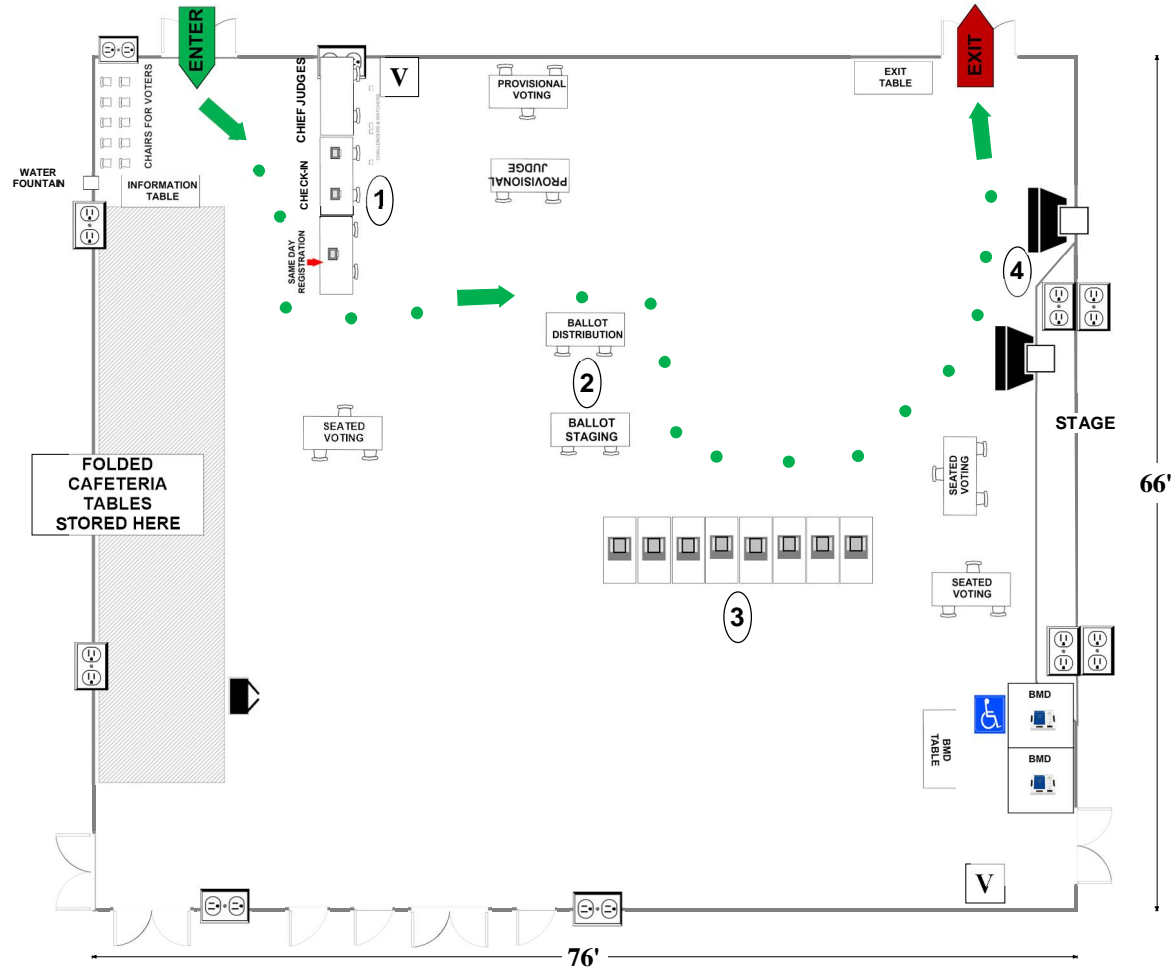
- | | | | | | |
|--|--|--|---|--|---------------|
| | 6'X2 1/2' Table | | Ballot Marking Device | | Voter Travel |
| | Voting Booths with 2 1/2'X5' clearance | | Vending Machine | | 2 plug outlet |
| | Transfer Cart | | Electronic Poll Book | | Fire alarm |
| | Window | | Scanner | | |
| | | | Scanner Judge stands
2 - 3 feet from scanner | | |

Montgomery County
 Board of Elections
 9/16/2024

09-36 Shady Grove Middle School
 8100 Midcounty Hwy
 Gaithersburg, MD 20877
RECOMMENDED ROOM LAYOUT

CAFETERIA

- | | |
|----------|---------------|
| 8 | Voting Booths |
| 9 | Seated Voting |
| 3 | Poll Books |
| 2 | BMDs |
| 2 | Scanners |



- | | | | | | |
|--|--|--|---|--|----------------|
| | 6'X2 1/2' Table | | BMD Ballot Marking Device | | 1 Voter Travel |
| | Voting Booths with 2 1/2'X5' clearance | | Vending Machine | | 2 plug outlet |
| | Transfer Cart | | Electronic Poll Book | | Scanner |
| | Window | | Scanner Judge stands
2 - 3 feet from scanner | | Fire alarm |

Montgomery County
 Board of Elections
 9/16/2024

09-37/09-39/09-47 Flower Hill Elementary

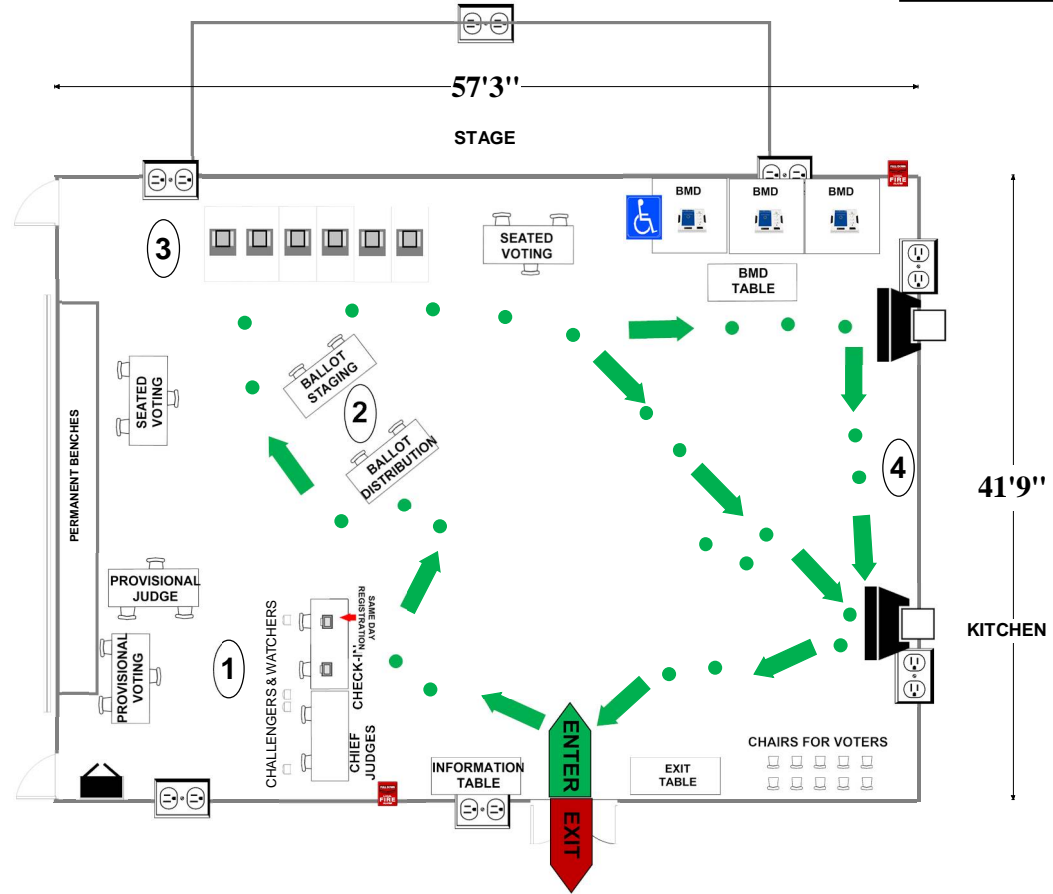
School

18425 Flower Hill Way
Gaithersburg, MD 20879

RECOMMENDED ROOM LAYOUT

ALL PURPOSE ROOM

- 6** Voting Booths
- 6** Seated Voting
- 2** Poll Books
- 3** BMDs
- 2** Scanners



- 6'X2 1/2' Table
- Voting Booths with 2 1/2'X5' clearance
- Transfer Cart
- Window
- Ballot Marking Device
- Vending Machine
- Electronic Poll Book
- Scanner
- Scanner Judge stands**
2 - 3 feet from scanner
- 1 Voter Travel
- 2 plug outlet
- Fire alarm

Montgomery County
Board of Elections

9/16/2024

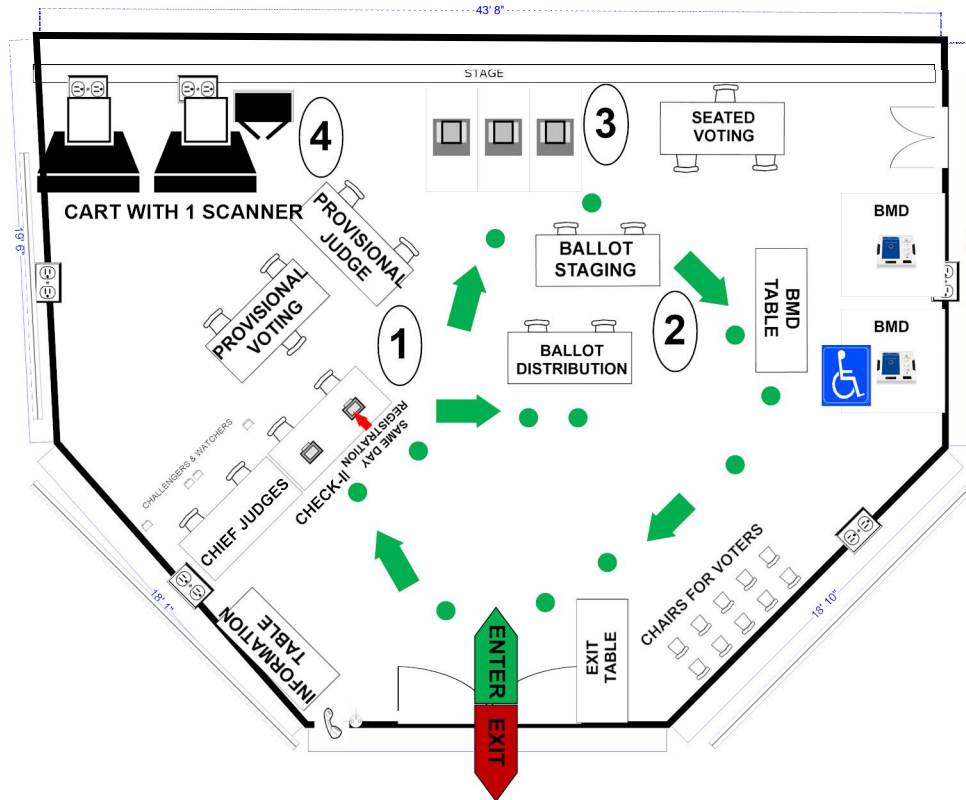
09-38/09-32/09-45 Washington Grove Town Hall

300 Grove Ave
Washington Grove, MD 20880

TOWN HALL

RECOMMENDED ROOM LAYOUT

- 3** Voting Booths
- 3** Seated Voting
- 2** Poll Books
- 2** BMDs
- 2** Scanners



- | | | | | | |
|--|--|--|----------------------|--|----------------|
| | 6'X2 1/2' Table | | BMD | | 1 Voter Travel |
| | Voting Booths with 2 1/2'X5' clearance | | Vending Machine | | 2 plug outlet |
| | Scanner | | Electronic Poll Book | | Fire alarm |
| | Window | | Black Transfer Cart | | |

Montgomery County
Board of Elections

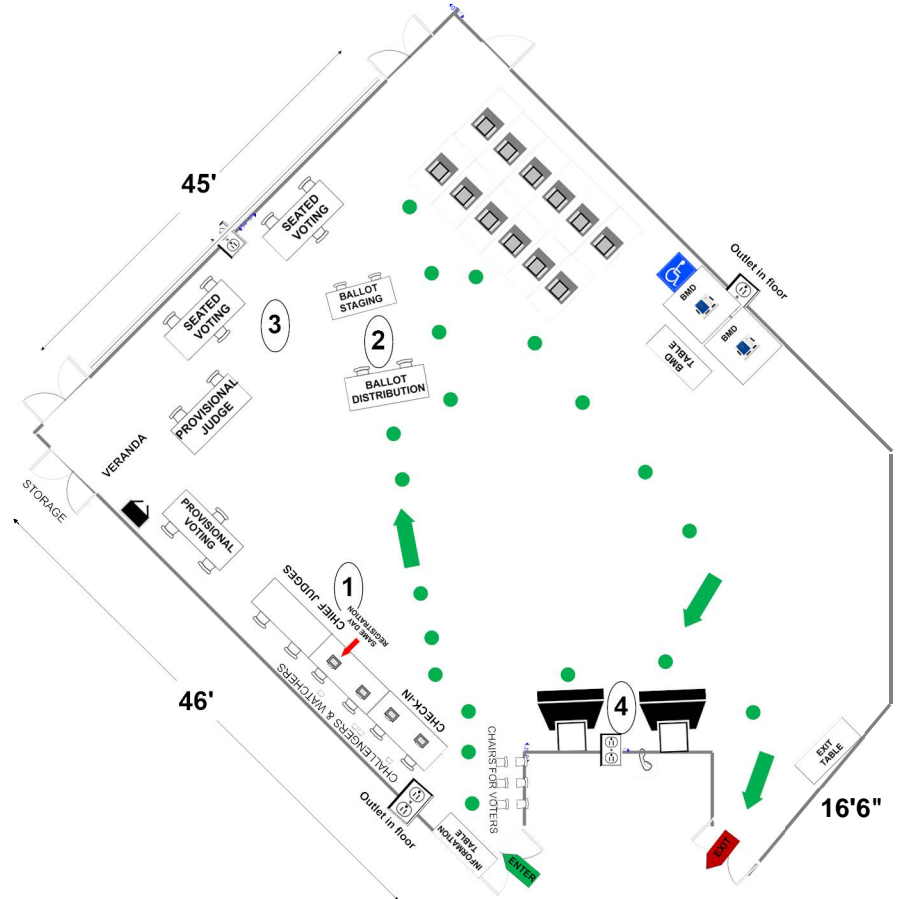
9/16/2024

09-40 Izaak Walton League of America

707 Conservation Lane MEETING ROOM
 Gaithersburg, MD 20878

RECOMMENDED ROOM LAYOUT

- | | |
|----|---------------|
| 12 | Voting Booths |
| 6 | Seated Voting |
| 4 | Poll Books |
| 2 | BMDs |
| 2 | Scanners |



- | | | | | | |
|--|--|--|---|--|---------------|
| | 6'X2 1/2' Table | | Ballot Marking Device | | Voter Travel |
| | Voting Booths with 2 1/2' X 5' clearance | | Vending Machine | | 2 plug outlet |
| | Transfer Cart | | Electronic Poll Book | | Scanner |
| | Window | | Fire alarm | | |
| | | | Scanner Judge stands
2 - 3 feet from scanner | | |

Montgomery County
 Board of Elections
 9/16/2024

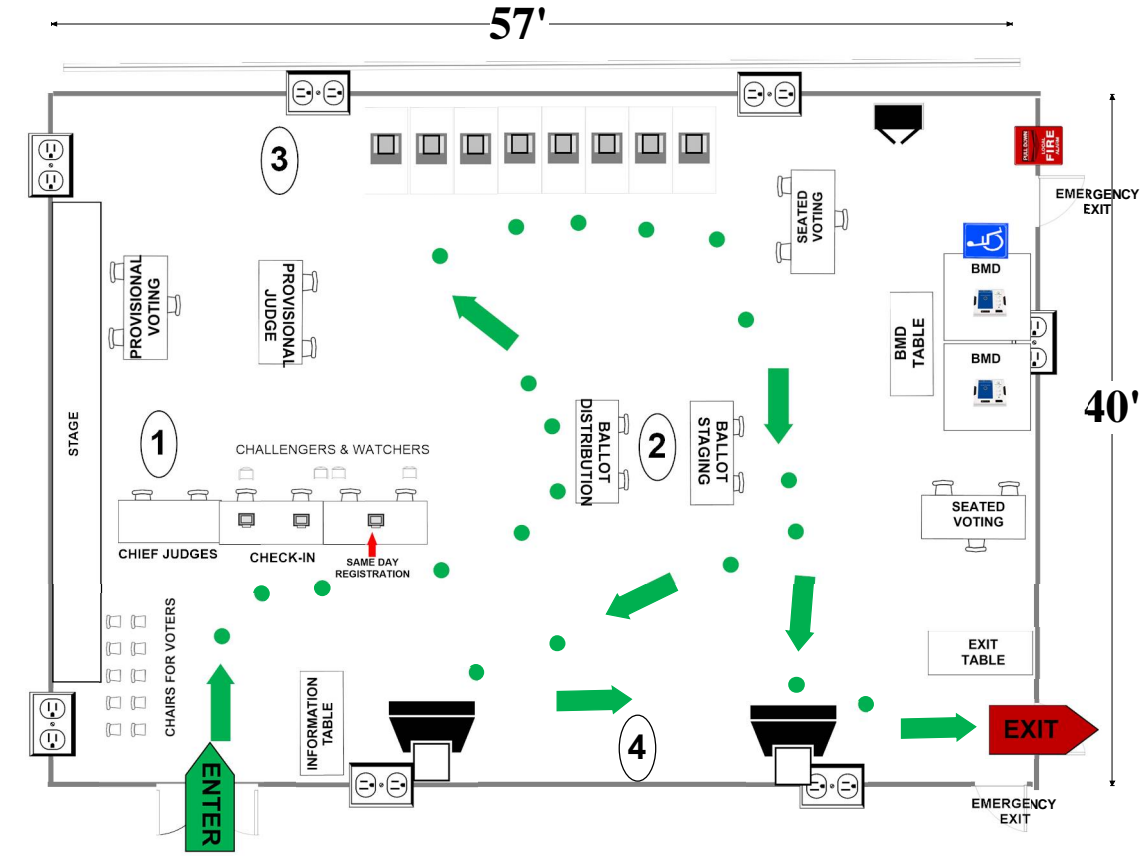
09-41 Germantown Elementary School

19110 Liberty Mill Road
Germantown, MD 20874

**ALL-PURPOSE
ROOM**

RECOMMENDED ROOM LAYOUT

- | | |
|----------|---------------|
| 8 | Voting Booths |
| 6 | Seated Voting |
| 3 | Poll Books |
| 2 | BMDs |
| 2 | Scanners |



	6'X2 1/2' Table		BMD		Voter Travel
	Voting Booths with 2 1/2'X5' clearance		Vending Machine		2 plug outlet
	Transfer Cart		Electronic Poll Book		Fire alarm
	Window		Scanner		
			Scanner Judge stands		
			2 - 3 feet from scanner		

Montgomery County
Board of Elections
9/16/2024