

WEDNESDAY, OCTOBER 19, 2022

Hazard Mitigation Planning Committee Kick Off Meeting

# MONTGOMERY COUNTY HAZARD MITIGATION PLAN UPDATE

**WITT O'BRIEN'S**  
PART OF THE SEACOR FAMILY

WITH YOU WHEN IT COUNTS

[wittobriens.com](http://wittobriens.com)

# AGENDA

- **INTRODUCTIONS**
- **OVERVIEW**
- **PLANNING PROCESS**
- **FIVE-YEAR PLAN REVIEW**
- **EXERCISE 1- HAZARD RANKING**
- **EXERCISE 2- CAPABILITY ASSESSMENT SURVEY**
- **QUESTIONS AND NEXT STEPS**

# INTRODUCTIONS

---

## WHO AM I?

- Chelsea Morganti, Deputy Director for Hazard Mitigation at Witt O'Brien's
- Candy Snipes, GIS (Geographic Information System) and HAZUS Specialist

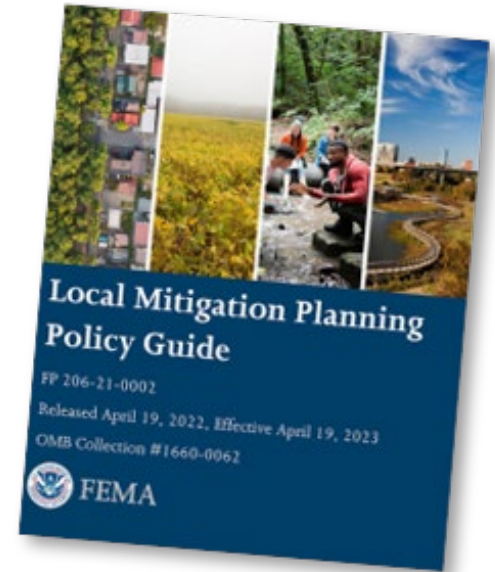
## HAZARD MITIGATION PLANNING TEAM ROLL CALL

## FILE SHARING

- Microsoft Teams

## LAST PLAN

- Formal FEMA approval April 8, 2019
- Current expires April 7, 2024
- New FEMA Policy



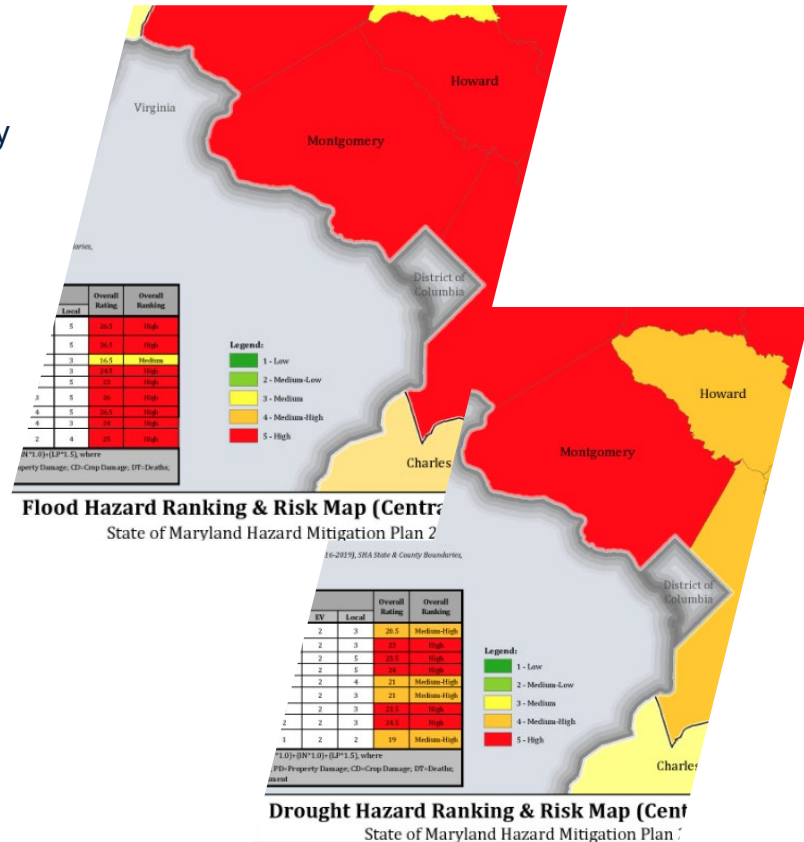
# OVERVIEW

## WHAT IS A NATURAL HAZARD?

- naturally occurring event vs. man-made
- destructive or negative impact on health, safety, life, and/or property

## WHAT IS MITIGATION?

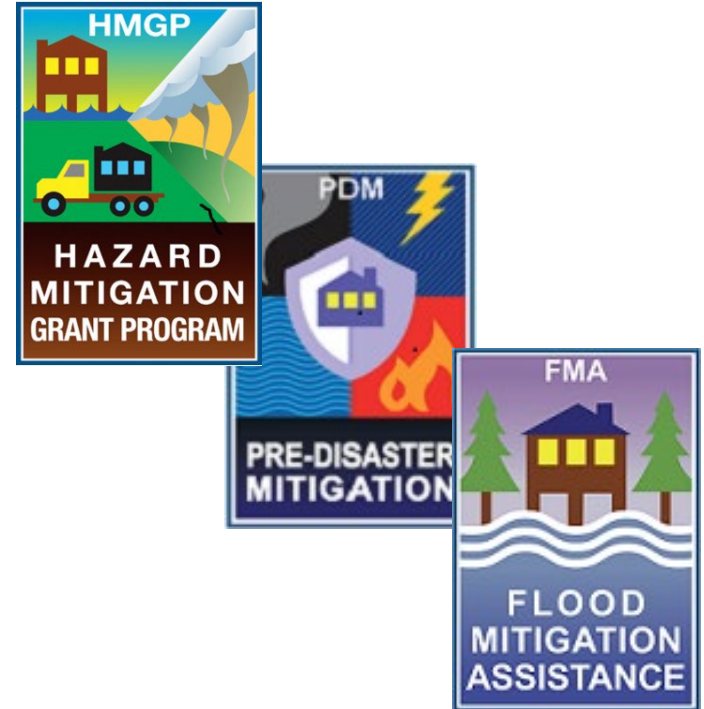
- Steps taken by the public, civic leadership, or private companies to reduce negative impacts
- most effectively through innovative, systemic, and informed steps.
- “Mitigation Actions”
  - removing property or infrastructure from the mapped hazard area (elevation and acquisition)
  - assisting and supporting naturally resilient acreage (wetlands, dunes, reefs)
  - hardening the built environment (electrical micro grids, hurricane straps)
  - strategic city planning (building codes and zoning restrictions)



# OVERVIEW - FEDERAL FUNDING

## GRANT PROGRAMS AND ACTIVITIES

- Hazard Mitigation Grant Program
- Flood Mitigation Assistance
- *Pre-Disaster Mitigation Grant Program*
- **Building Resilient Infrastructure and Communities**
  - Buyout Program Implementation/Residential Elevations
  - Residential and Commercial Floodproofing and Wind Retrofit
  - Flood Control Projects
  - Coastal Resilience
  - Nature Based Solutions
  - Infrastructure and Utility Hardening
- **Hazard Mitigation Grant Program- Post Fire**
- **CDBG-MIT**



# OVERVIEW – YOUR ROLE

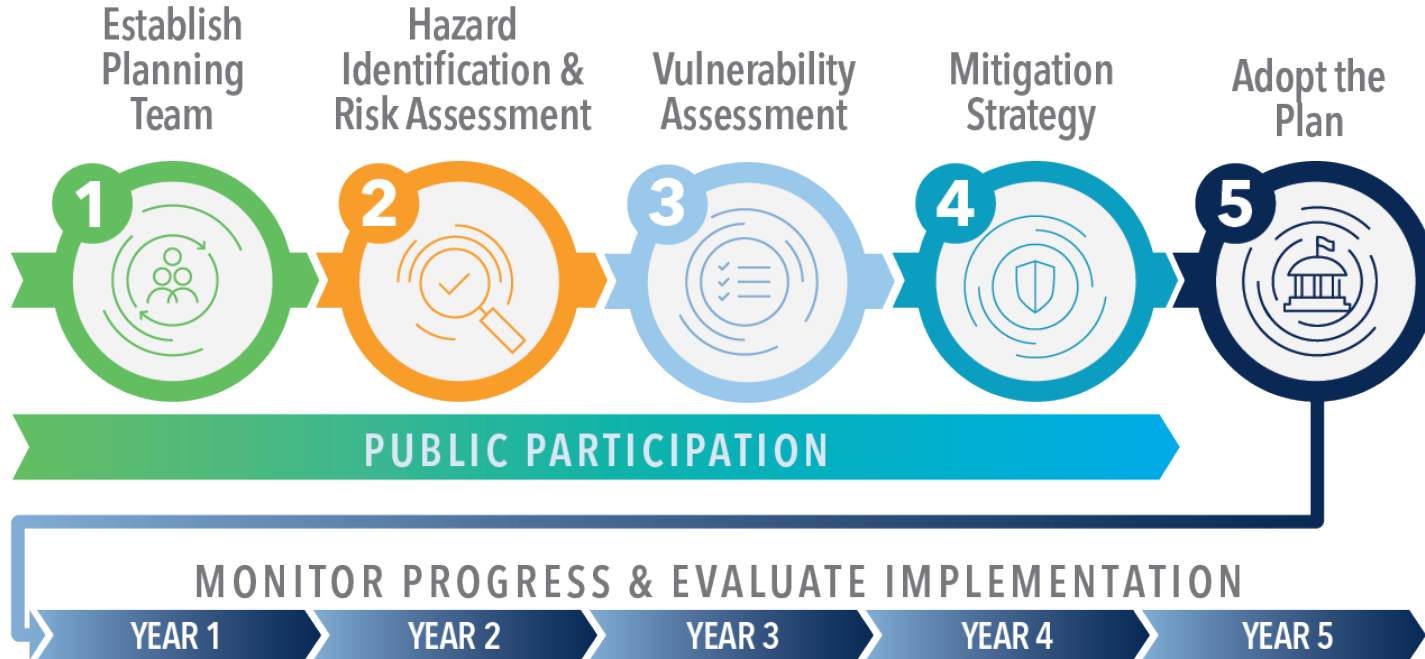
---

## WHY ARE YOU HERE?

- Attend meetings
- Provide data and review draft sections
- Identify Natural Hazards
  - What hazards have impacted your community
  - Where do hazards have the most destructive or negative impact on health, safety, life, and/or property?
- Locate assets, infrastructure, at-risk communities
- What tools do you have to support your community through disasters?
- What tools do you need?
- Have the actions from the last plan been Implemented? What is the status?
- What can we do in the future to be more resilient?
- Adopt the Plan
- Break the disaster cycle!



# THE PLANNING PROCESS



# TIMELINE

---

Planning Meeting #1 - Kick Off	Wednesday, October 19, 2022
Planning Meeting #2 - Participants Kick Off	TBD
<i>Solicit and Incorporate Input from the Public</i>	November 2022
Hazard Identification and Risk Assessment	October - March
Planning Meeting #3 - Risk Assessment	February 2023
Mitigation Strategy	March - June
<i>Solicit and Incorporate Input from the Public</i>	May 2023
Planning Meeting #4 - Mitigation Strategy	June 2023
<i>Solicit and Incorporate Input from the Public</i>	July 2023
Draft Finalization	August 2023
<b>REVIEW DRAFT</b>	<b>September 2023</b>
State Submission	October 2023
State/FEMA REVIEW	October - April
Plan Adoption	April 2024



# 5 YEAR MAINTENANCE

---

- Has the Mitigation Planning Committee met annually to evaluate the plan and discuss coordination with participating jurisdictions and stakeholders?
- Have “municipal monitors” been assigned and have they updated the County on Mitigation Action statuses?
- Has a yearly assessment of actions been completed and of how effective those actions were in mitigating losses?
- Has a periodic review of the planning and land use regulatory elements of each municipality been conducted?
- Have any public comments been solicited or collected during the 5-year window?
- Any other changes, additions, or comments?

# DATA GATHERING EXERCISES

---

- **EVALUATION OF HAZARDS**
- **CAPABILITY ASSESSMENT SURVEY**

# WHO ELSE CAN WE REACH OUT TO?

---

**Businesses**

**Academia**

**Private Organizations**

**Nonprofit Organizations**

**Community-based Organizations**

**Entities that provide support to  
underserved communities and socially  
vulnerable populations**

**“Community Lifelines”**

WITH YOU WHEN IT COUNTS

# QUESTIONS & NEXT STEPS

# THANK YOU!

For more information, please reach out to

Chelsea Morganti

cell: 505-582-9514

[cmorganti@wittobriens.com](mailto:cmorganti@wittobriens.com)