

A. Identification and Coding Information

| | | |
|-------------------|---------------|-------------|
| 1. Project Number | Agency Number | Update Code |
| 103800 | S-38.01 | Change |

2. Date: October 1, 2009
 Revised:
 3. Project Name: Preserve at Rock Creek Wastewater Pumping Station
 4. Program: Sanitation 6. Planning Area: Upper Rock Creek P.A. 22

7. Pre PDF Pg.No.: 8. Req. Adeq. Pub. Fac.
 5. Agency: WSSC

B. Expenditure Schedule (000's)

| Cost Elements | (8) Total | (9) Thru FY '09 | (10) Estimate FY '10 | (11) Total 6 Years | (12) Year 1 FY '11 | (13) Year 2 FY '12 | (14) Year 3 FY '13 | (15) Year 4 FY '14 | (16) Year 5 FY '15 | (17) Year 6 FY '16 | (18) Beyond 6 Years |
|--------------------------------|--------------|-----------------|----------------------|--------------------|--------------------|--------------------|--------------------|--------------------|--------------------|--------------------|---------------------|
| Planning, Design & Supervision | 100 | | 50 | 50 | 50 | | | | | | |
| Land | | | | | | | | | | | |
| Site Improvements & Utilities | | | | | | | | | | | |
| Construction | 850 | | 500 | 350 | 350 | | | | | | |
| Other | 142 | | 86 | 56 | 56 | | | | | | |
| Total | 1,092 | | 636 | 456 | 456 | | | | | | |

C. Funding Schedule (000's)

| | | | | | | | | | | | |
|--------------------|-------|-----|-----|-----|--|--|--|--|--|--|--|
| Contribution/Other | 1,092 | 636 | 456 | 456 | | | | | | | |
|--------------------|-------|-----|-----|-----|--|--|--|--|--|--|--|

D. Description & Justification

DESCRIPTION

This project provides for the planning, design, and construction of a 0.07 MGD wastewater pumping station to serve The Preserve at Rock Creek subdivision.

Service Area Rock Creek Drainage Basin **Capacity** 0.07 mgd **Population** 200

JUSTIFICATION

Plans & Studies

MNCPPC Upper Rock Creek Master Plan (April, 2004); The Hydraulic Planning Analysis for the Preserve at Rock Creek subdivision (January, 2009).

Specific Data

Montgomery County required this project and the accompanying force main to avoid gravity sewer construction through an environmentally sensitive area on the project site.

Cost Change

Not applicable

STATUS Preliminary Design (WSSC Contract No. CP4770A08,).

OTHER

The project scope has remained the same. Expenditures shown in Block B are planning-level estimates only and may change depending on site-specific conditions and design constraints. Estimated completion date is developer dependent. No WSSC rate-supported debt will be used for this project.

COORDINATION

Montgomery County Government and WSSC Project S-38.02, Preserve at Rock Creek WWPS Force Main.

NOTE This project supports 100% Growth.

E. Annual Operating Budget Impact (000's)

| | | |
|------------------------------------|--------------------|--------------|
| Program Costs | Staff | FY of Impact |
| | Other | |
| Facility Costs | Maintenance | |
| | Debt Service | |
| Total Costs..... | | |
| Impact on Water or Sewer Rate..... | | |

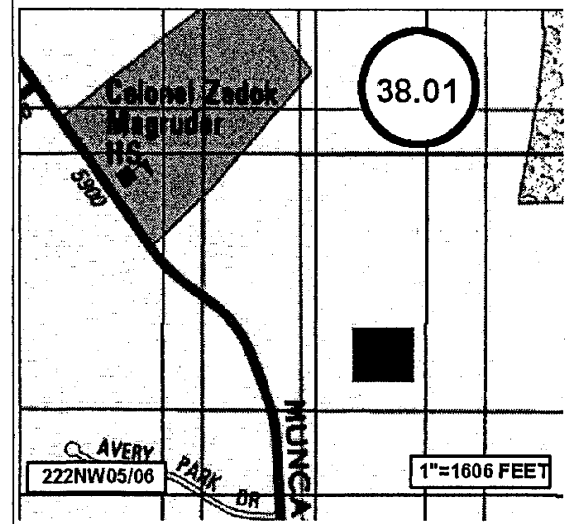
F. Approval and Expenditure Data (000's)

| | |
|-----------------------------------------------|-------|
| Date First in Capital Program | FY 10 |
| Date First Approved | FY 10 |
| Initial Cost Estimate | 1,124 |
| Cost Estimate Last FY | 1,124 |
| Present Cost Estimate | 1,092 |
| Approved Request, Last FY | 572 |
| Total Expenditures & Encumbrances | |
| Approval Request FY 11 | 456 |
| Supplemental Approval Request Current FY (10) | |

G. Status Information

Land Status: Site provided by applicant
 % Project Completion: D-0%
 Est. Completion Date: Developer dependent

H. Map Map Reference Code:



2224