

RECREATION PLANTING AREA		TOTAL ACRES	QAD	
USE	ESTIMATED VALUE	CURRENT VALUE	AVAILABILITY	
AV	AMERICAN BIRCH	SWAMP WHITE OAK	50	22
AV	ACORN PINE	RED WATTLE	10	22
AV	ATLANTA SILVATICA	BLACK OAK	25	10
AV	BERKSHIRE REDWATER	RED OAK	25	10
AV	JACKSON VIRGINIANA	EASTERN RED CEDAR	25	10
AV	BERKSHIRE REDWATER	RED OAK	25	10
AV	AMERICAN BIRCH	SWAMP WHITE OAK	50	22
AV	ACORN PINE	RED WATTLE	10	22
AV	ATLANTA SILVATICA	BLACK OAK	25	10
AV	BERKSHIRE REDWATER	RED OAK	25	10
AV	JACKSON VIRGINIANA	EASTERN RED CEDAR	25	10
AV	BERKSHIRE REDWATER	RED OAK	25	10
AV	AMERICAN BIRCH	SWAMP WHITE OAK	50	22
AV	ACORN PINE	RED WATTLE	10	22
AV	ATLANTA SILVATICA	BLACK OAK	25	10
AV	BERKSHIRE REDWATER	RED OAK	25	10
AV	JACKSON VIRGINIANA	EASTERN RED CEDAR	25	10
AV	BERKSHIRE REDWATER	RED OAK	25	10
AV	AMERICAN BIRCH	SWAMP WHITE OAK	50	22
AV	ACORN PINE	RED WATTLE	10	22
AV	ATLANTA SILVATICA	BLACK OAK	25	10
AV	BERKSHIRE REDWATER	RED OAK	25	10
AV	JACKSON VIRGINIANA	EASTERN RED CEDAR	25	10
AV	BERKSHIRE REDWATER	RED OAK	25	10

TREE PLANTING AND MAINTENANCE CALENDAR

SOURCE: adapted from the FOREST CONSERVATION MANUAL, 1991

TASKS	MONTHS
	JAN FEB MAR APR MAY JUNE JULY AUG SEPT OCT NOV DEC
TEMPERATURE 10° F OR BELOW	
PLANTING	■
WATERING	■
WEEDING	■
MULCHING	■
PRUNING	■

KEY:
 ■ ACTIVITIES DURING THESE MONTHS ARE DEPENDENT UPON SOILING CONDITIONS
 ■ RECOMMENDED OPTIMAL TIME
 ■ RECOMMENDED WITH ADDITIONAL CARE
 ■ RECOMMENDED
 ■ DEPENDENT UPON SITE CONDITIONS
 ■ DEPENDENT UPON SITE CONDITIONS; HEAVY WATERING & GREATLY PROMOTED FROM MAY THROUGH OCTOBER (AHEAD WEEKLY RAINFALL EQUALS 1")

NOTES:
 1. Activities during November through February depend on ground conditions.
 2. The fall starting of oak and pine.
 3. The starting date of oak & pine is most successful when the starting date is the same as the starting date of the recommended tree planting for the same species and ground conditions.
 4. The starting date of oak & pine is most successful when the starting date is the same as the starting date of the recommended tree planting for the same species and ground conditions.

Sequence of Events for Properties Required to Comply With Forest Conservation Plans, Exemptions From Submitting Forest Conservation Plans, and Tree Save Plans

The property owner is responsible for ensuring all tree protection measures are performed in accordance with the approved final forest conservation plan or tree save plan, and as modified in the field by a Planning Department Forest Conservation Inspector. The measures must meet or exceed the more recent standards published by the American National Standards Institute (ANSI A30).

Pre-Construction

- An on-site pre-construction meeting is required after the limits of disturbance have been staked and flagged and before any land disturbance.
- The property owner must arrange for the meeting and following people should must participate at the pre-construction meeting: the property owner or their representative, construction superintendent (Licensed Professional Engineer or Licensed Professional Surveyor), Planning Department Forest Conservation Inspector, and Montgomery County Department of Planning Services (DPS) Sediment Control Inspector. The purpose of this meeting is to verify the limits of disturbance and discuss specific tree protection and tree care measures shown on the approved plan. No land disturbance shall begin before tree protection and site-restoration measures have been implemented and approved by the Planning Department Forest Conservation Inspector.
 - Typical tree protection devices include:
 - Chain link fence (four foot high)
 - Super silk fence with wire strapping between the support posts (minimum 4 feet high with high visibility flagging)
 - 14 gauge 2 inch x 4 inch welded wire fencing supported by steel I-beer posts (minimum 4 feet high with high visibility flagging)
 - Typical tree protection devices may include, but are not limited to:
 - Root pruning with a root cutter or slurry saw designed for the purpose. Trainers are not allowed, unless approved by the Forest Conservation Inspector
 - Crown reduction or pruning
 - Watering
 - Fertilizing
 - Vertical mulching
 - Root aeration systems
- A Maryland Licensed Tree expert must perform, or directly supervise, the implementation of all site-restoration measures. Documentation of the process/activities

photographs) may be required by the Forest Conservation Inspector, and will be determined at the pre-construction meeting.

- Temporary tree protection devices must be installed per the approved Forest Conservation Plan, Exemption Plan, or Tree Save Plan and prior to any land disturbance. The Forest Conservation Inspector, in coordination with the DPS Sediment Control Inspector, may make field adjustments to increase the survivability of trees as shown shown as saved on the approved plan.
- Tree protection fencing must be installed and maintained by the property owner for the duration of construction project and must not be altered without prior approval from the Forest Conservation Inspector. All construction activity within protected tree and forest areas is prohibited. This includes the following activities:
 - Parking or driving of equipment, machinery or vehicles of any type.
 - Storage of any construction materials, equipment, stockpiling, fill, dirt, etc.
 - Dumping of any chemicals (i.e., paint thinner), mortar or concrete residue, trash, garbage, or debris of any kind.
 - Falling of trees into a protected area.
 - Trenching or grading for utilities, irrigation, drainage, etc.
- Forest and tree protection signs must be installed in accordance with the Forest Conservation Inspector. The signs must be waterproof and surviving provided in both English and Spanish.

During Construction

- Periodic inspections will be made by the Forest Conservation Inspector. Corrections and repairs to tree protection devices must be completed within the timeframe given by the Inspector.
- The property owner must immediately notify the Forest Conservation Inspector of any damage to trees, forests, meadows, ground cover and any other undisturbed areas shown on the approved plan. Remedial actions, and the relative timeliness to remove these areas, will be determined by the Forest Conservation Inspector.

Post-Construction

- After construction is completed, but before tree protection devices have been removed, the property owner must request a final inspection with the Forest Conservation Inspector. As the final inspection, the Forest Conservation Inspector may require additional corrective measures, which may include:
 - Removal and possible replacement of dead, dying, or hazardous trees
 - Pruning of dead or declining limbs
 - Soil restoration
 - Fertilization
 - Watering
 - Wood repair

- Long term protection measures, including permanent signage, must be installed per the approved plan. Installation will occur at the appropriate time during the construction project. Refer to the approved plan drawing for the long-term protection measures to be installed.

INSPECTIONS

All field inspections must be conducted by the applicant.

Field Inspections must be conducted as follows:

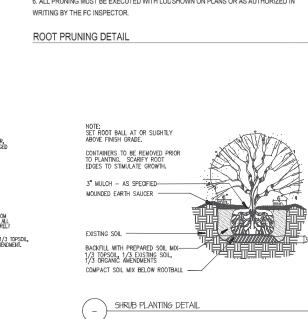
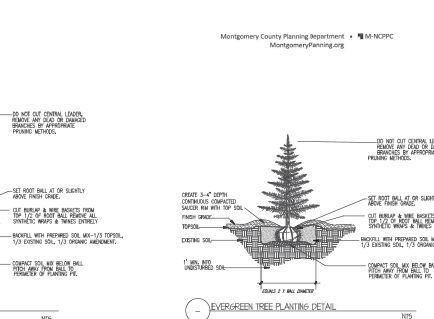
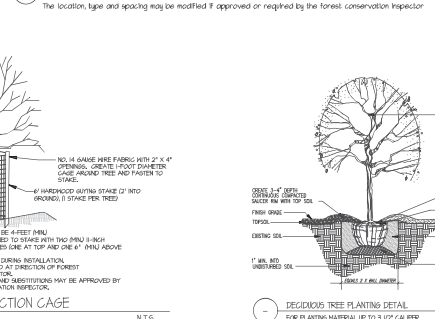
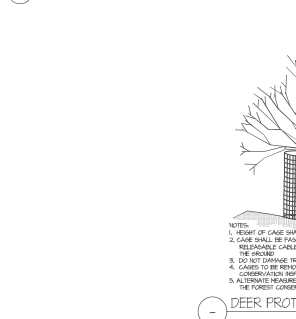
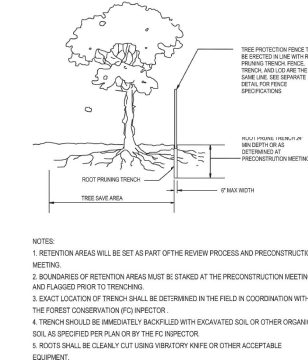
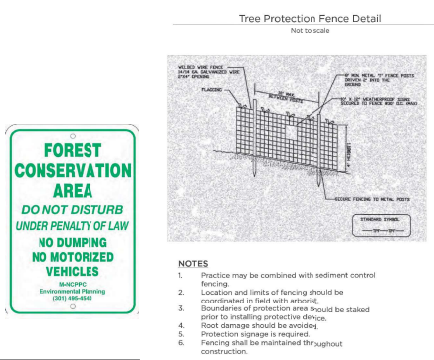
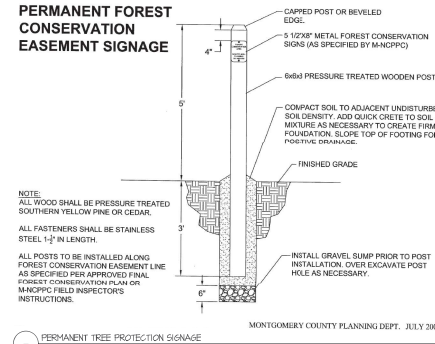
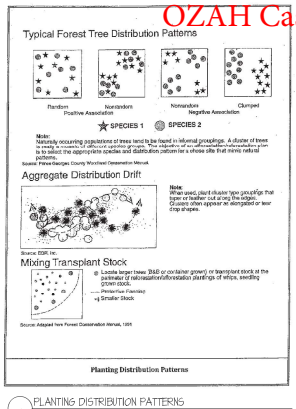
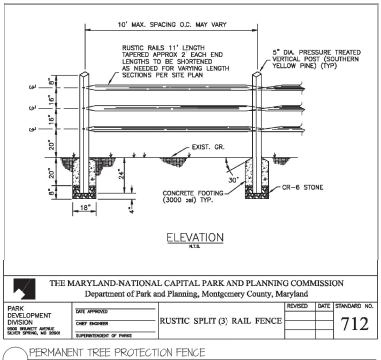
Plans without Planting Requirements

- After the limits of disturbance have been staked and flagged, but before any clearing or grading begins.
- After necessary erosion reduction measures have been completed and protection measures have been installed, but before any clearing and grading begins and before release of the building permits.
- After completion of all construction activities, but before removal of tree protection fencing, to determine the level of compliance with the provisions of the forest conservation plan.

Additional Requirements for Plans with Planting Requirements

- Before the start of any required reforestation and afforestation planting.
- After the required reforestation and afforestation planting has been completed to verify that the planting is successful and prior to the start of the maintenance period.
- 2 years after reforestation and afforestation have been completed, to determine survival and assess necessary maintenance activities for the remaining duration of the maintenance and management period.
- At the end of the maintenance period to determine the level of compliance with the provisions of the planting plan, and if appropriate, release of the performance bond.

Exhibit 9 (c)
 OZAH Case No: CU 24-15



FINAL FOREST CONSERVATION PLAN PREPARED BY:		DEVELOPER'S CERTIFICATE	
		The undersigned agrees to provide all the features of the Approved Final Forest Conservation Plan No. F2024010 - including, but not limited to, providing forest planting, maintenance and all other applicable agreements, bonding forest planting, maintenance and all other applicable agreements.	
Date: 4/8/2024	Date: 4/8/2024	Developer's Name: Hong Cheng LLC, Hong Cheng LLC	Contact Person or Owner: Kuo-Chien Cheng
Address: 1100 3rd St NW, Washington, DC 20004	Address: 1100 3rd St NW, Washington, DC 20004	Phone: (800) 424-4242	Phone: (800) 424-4242
Signature: Hong Cheng LLC	Signature: Kuo-Chien Cheng	Signature: Kuo-Chien Cheng	Signature: Kuo-Chien Cheng