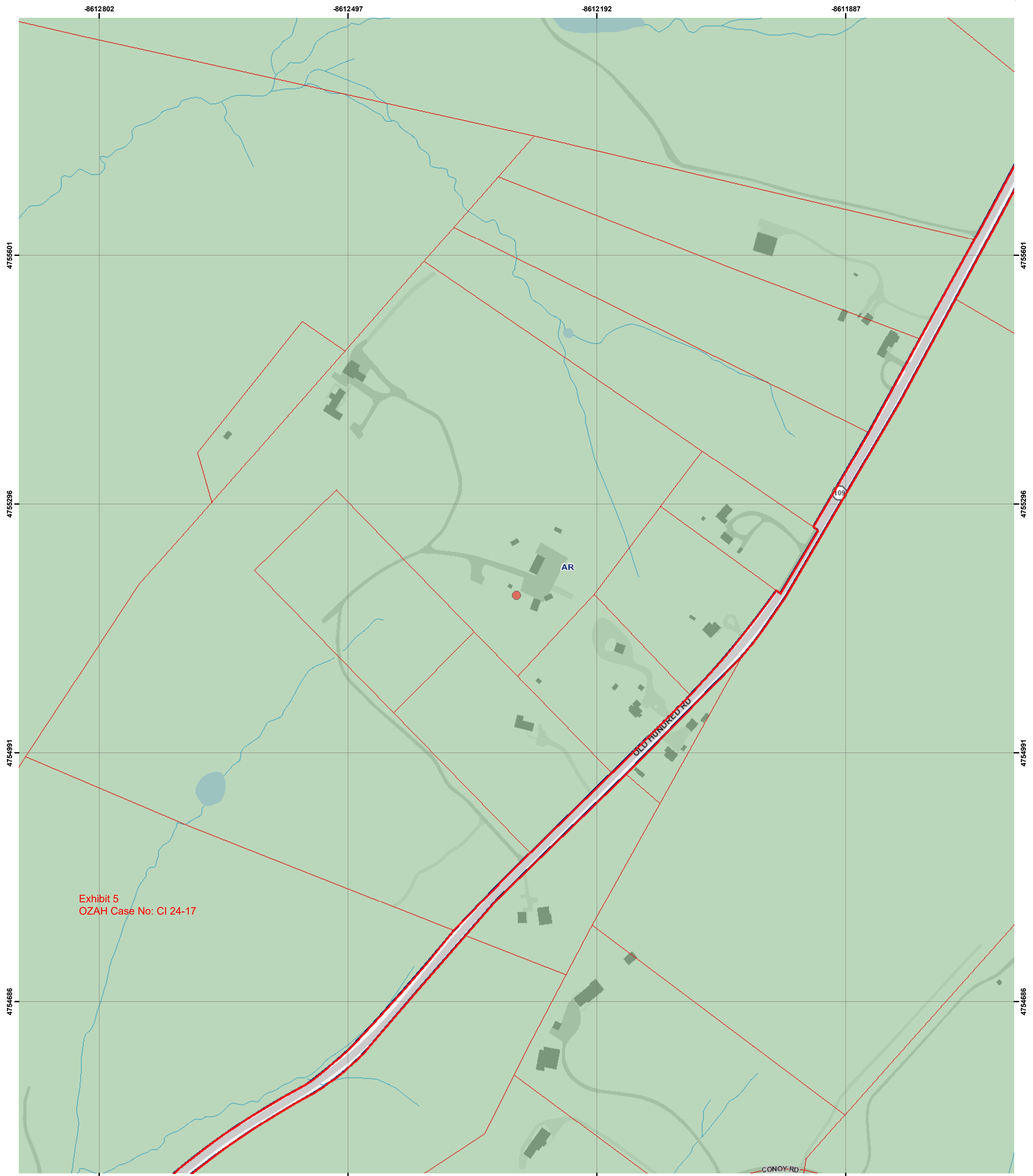


NOTES CONCERNING ZONING IN RIGHTS-OF-WAY  
 1. Zone boundaries must not be depicted in public rights-of-way but must run to the centerline of each right-of-way.  
 2. Zone boundaries within rights-of-ways previously dedicated by plat or other method of subdivision can be included in map amendments for density purposes; rights-of-way included in a map amendment boundary assume the new zoning assigned in the map amendment.

© Copyright M-NCPPC 2010  
 This map is protected by copyright. It may not be copied or reproduced in any form, including electronic means such as: digitizing, scanning, and image processing, or by any system now known or to be invented, without permission in writing from the Montgomery County Planning Department.



# MONTGOMERY COUNTY ZONING MAP

The Maryland-National Capital Park and Planning Commission

Montgomery County Planning Department



Account #	00916938
Address	22900 OLD HUNDRED RD BARNESVILLE, 20838
Landuse	Agriculture
Legal Description	FINAL CONCLUSION
Zone	AR
Overlay Zone	N/A
TDR Overlay Zone	N/A
Parking District	N/A
CBD	N/A
Parcel, Lot, Block	P653 , N/A, N/A

Special Protection Area	N/A
Urban District	N/A
Enterprise Zone	N/A
Arts & Ent. District	N/A
Special Tax District	N/A
Bike/Ped Priority Area	N/A
Urban Renewal Area	N/A
Metro Station Policy Area	N/A
Priority Funding Area	N/A
Septic Tier	Tier 4: Conservation Area
Municipality	N/A
Master Plan	AGRICULTURAL & RURAL OPEN SPACE
Historic Site/District	N/A

WSSC Grid	232NW17
Map Amendments	G-266 G-956
Water/Sewer Categories	W-6 / S-6

Printed: 6/16/2022

1 inch = 250 feet

I certify that this document is a copy of the official Montgomery County Zoning Maps as downloaded on 6/16/2022 from [MCATLAS.ORG/ZONING](http://MCATLAS.ORG/ZONING).

Signed 

