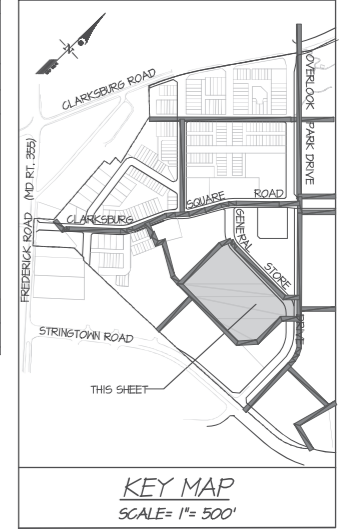


- EXISTING UTILITY NOTES**
- For marking locations of existing utilities, notify "MISS UTILITY" at 1-800-257-7777, 48 hours prior to any excavation or construction.
  - Information concerning underground utilities was obtained from available records. The contractor must determine the exact locations and elevations of the utilities by digging test pits by hand at all utility crossings well in advance of trenching. If clearances are less than specified on this plan or less than 12 inches when not specified, contact the Engineer, and the owner of the other involved utility before proceeding with construction.
  - For field location of gas line services, notify Washington Gas Light Co., 703-750-1000, 48 hours prior to the start of any excavation or construction.
  - Omissions and/or additions of utilities found during construction shall be the sole responsibility of any contractor engaged in excavation of this site. Gutschick, Little & Weber, P.A., shall be notified immediately of any and all utility information, omissions and additions found by any contractor.
  - Due to the proximity of live underground and overhead utilities, we are not responsible for any damage or injury sustained during construction by any persons, trucks, trailers, or equipment used on or adjacent to the site.

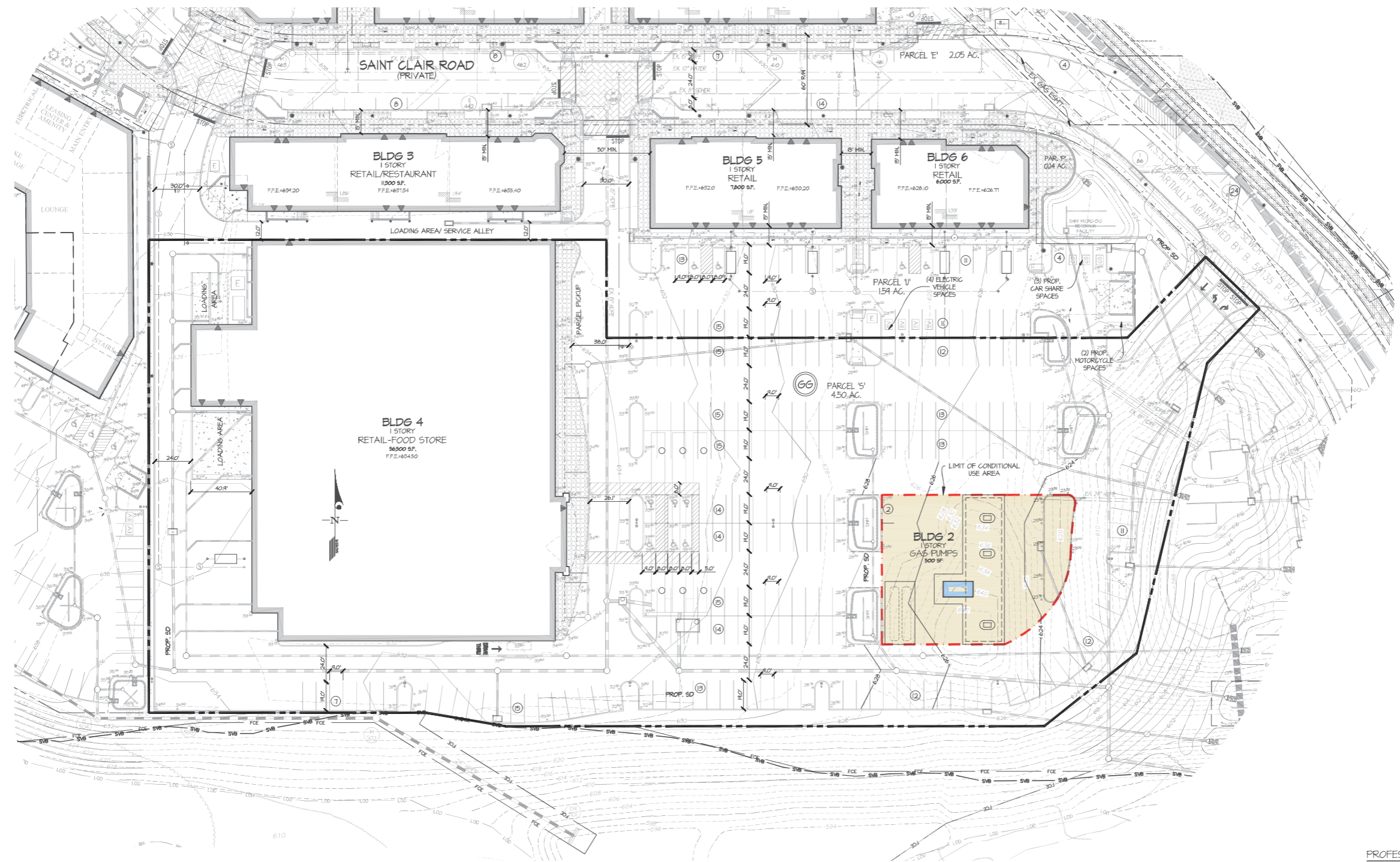
48 Hours  
Before You Dig  
Call  
"MISS UTILITY"  
Service Protection Center



CALL TOLL FREE  
1-800-257-7777



**NOTE:**  
THE ZONE OF INFLUENCE FOR EACH COMMERCIAL/CIVIC BUILDING SHALL EXTEND 10' FROM EACH OF THE WALLS SHOWN ON THIS PLAN. FINAL ARCHITECTURE AND BUILDING MATERIALS WITHIN THE ZONE OF INFLUENCE TO BE DETERMINED AT BUILDING PERMIT.



- LEGEND**
- ★ SINGLE FIXTURE LIGHT, 12' POLE TYP. UNLESS NOTED OTHERWISE.
  - MPDU
  - ★ HIGH VISIBILITY LOT (SEE SHEET 1-10)
  - Ⓢ CAR SHARE PARKING SPACES
  - EV ELECTRIC VEHICLE PARKING SPACES
- PAVING LEGEND**  
(SEE LANDSCAPE DETAIL SHEETS ML-14 TO ML-26) PAVING SURFACES ARE SHOWN IN GREATER DETAIL ON 10 SCALE PLANS ACCORDING TO THE FOLLOWING:
- SPECIAL SIDEWALK TREATMENT
  - ASPHALT PAVING
  - CONCRETE
  - SWM ACCESS & FIRE ACCESS
  - CROSSWALK TREATMENT
  - EXISTING BRICK
- IF A SPECIFIC DETAIL FOR A PAVING SURFACE IS NOT SHOWN ON THE 10 SCALE PLANS, THE 30 SCALE PLANS CONTROL.

- GENERAL NOTES**
- FOR ALL DEVELOPMENT STANDARDS GENERAL NOTE, AND OVERALL PROJECT INFORMATION SEE CERTIFIED SITE PLAN INDEX SHEETS.
  - M-NCPPC STAFF MUST INSPECT ALL TREE-SAVE AREAS AND PROTECTION DEVICES PRIOR TO CLEARING AND GRADING.
- LANDSCAPE NOTES**
- ANY ON-LOT LANDSCAPING AND ALLEY LANDSCAPING PREVIOUSLY SHOWN FOR EXISTING HOUSES AND NOT INSTALLED, IS NOT THE RESPONSIBILITY OF THE APPLICANT.
  - SEE APPROVED SWM PLANS FOR ALL LANDSCAPING SHOWN IN SWM FACILITIES.

**PROFESSIONAL CERTIFICATION**  
I hereby certify that to the best of my knowledge, information and belief that the plan shown hereon is true and correct; has been prepared in accordance with the Zoning Regulations of Montgomery County, Maryland; I hereby certify that these plans were prepared or approved by me, and that I am a duly licensed Professional Engineer under the laws of the State of Maryland.

License No. 24914  
Expiration Date: January 20, 2026

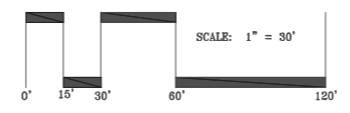
August 1, 2024  
Date

*The Longfellow*  
Professional Engineer  
Gutschick, Little & Weber, P.A.  
Conditional Use Plan No. CU2024-

**GLW**  
PLANNING | ENGINEERING | SURVEYING

3909 NATIONAL DRIVE | SUITE 250 | BURTONSVILLE, MD 20886 | GLWPA.COM  
PHONE: 301-421-4024 | FAX: 410-660-1620 | DC: 301-421-4188

DESIGNED BY	DRAWN BY	CHECKED BY	DATE	REVISION	BY	APPR.
KAB	KAB	TML				



PREPARED FOR:  
670 RETAIL L.C.  
c/o ELM STREET DEVELOPMENT  
1355 BEVERLY ROAD, SUITE 240  
MCLEAN, VIRGINIA 22101  
ATTN: KATHRYN L. KUBIT  
703-734-9730

SCALE	ZONING	DATE	TAX MAP - GRID
1"=100'	C-0.25, R-0.5, H-65T	AUG. 2024	EW-42

CONDITIONAL USE SITE PLAN  
**CLARKSBURG TOWN CENTER**  
WEIS GAS PUMPS  
Parcel S  
Ex. Parcel K - Plat No. 25584

COLESVILLE ELECTION DISTRICT No. 05  
MONTGOMERY COUNTY, MARYLAND

G. L. W. FILE NO.  
23136  
SHEET  
3 OF 5