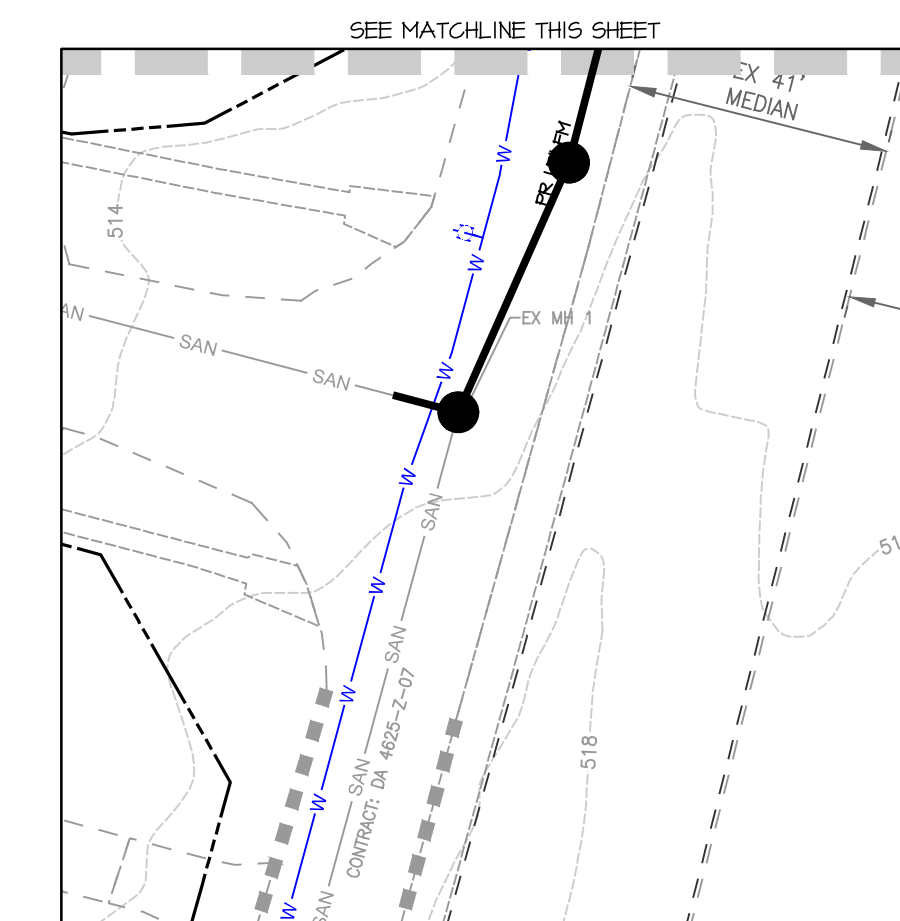


LEGEND

- EX. PROPERTY LINE
- EX. RIGHT-OF-WAY
- EX. ADJACENT PROPERTY LINE
- EX. EASEMENT
- EX. BUILDING
- EX. BUILDING OVERHANG
- EX. CURB
- EX. PAVEMENT/EDGE OF GUTTER
- EX. WALK
- EX. WALL
- EX. CONCRETE
- EX. METAL FENCE
- EX. WOOD FENCE
- EX. NON-TIDAL WETLAND
- EX. STREAM/WETLAND BUFFER
- EX. WATERS-OF-THE-US
- EX. TREE LINE
- EX. SPECIMEN TREE (TRUNK & CRITICAL ROOT ZONE)
- EX. TREE
- EX. SHRUB
- EX. OVERHEAD ELECTRIC
- EX. OVERHEAD TELEPHONE
- EX. STORM DRAIN
- EX. SANITARY LINE
- EX. WATERLINE
- EX. POWER POLE
- EX. 2' CONTOUR
- EX. 10' CONTOUR
- PR. EASEMENT
- PR. BUILDING
- PR. CURB & GUTTER
- PR. RETAINING WALL
- PR. WOODS LINE
- PR. LIGHT POLE
- PR. HANDICAP PARKING
- PR. SIDEWALK RAMP
- PR. 8" PVC SAN
- PR. 12" ASP
- PR. 8" W
- PR. STORM DRAIN
- PR. WATER LINE
- PR. FIRE HYDRANT
- PR. ≤1' CONTOUR
- PR. 2' CONTOUR
- PR. 10' CONTOUR
- PR. LIMIT OF DISTURBANCE
- PR. LIMIT OF DISTURBANCE TREE PROTECTION
- PR. MICRO-BIORETENTION FACILITY (M-B)
- PR. FOREST CONSERVATION EASEMENT
- PR. REFORESTATION AREA
- FIRE DEPT. ACCESS ROUTE



MORRIS & RITCHIE ASSOCIATES, INC.
 ENGINEERS, PLANNERS, SURVEYORS AND LANDSCAPE ARCHITECTS
 14280 PARK CENTER DRIVE
 LAUREL, MD 20707
 (410) 792-9792 / (301) 776-1690
 MRAGTA.COM

**PRIMROSE AT 16650 GEORGIA AVENUE
 CHILDCARE FACILITY
 CONDITIONAL USE PLAN**

FIRE DEPARTMENT ACCESS PLAN

TAX MAP HS53 ~ PARCEL 110 ~ PRELIMINARY PLAN #120250090
 ZONED R-200 ~ L.65992 F.117 ~ WSSC GRID 222NW03
 16650 GEORGIA AVENUE, OLNEY, MD 20832

DATE	REVISIONS	JOB NO.:	22077X02
		SCALE:	1" = 30'
		DATE:	06/18/2024
		DRAWN BY:	ZWB
		DESIGN BY:	CMG
		REVIEW BY:	CMG
		SHEET:	1 OF 1

SITE LAYOUT

SCALE: 1" = 30'

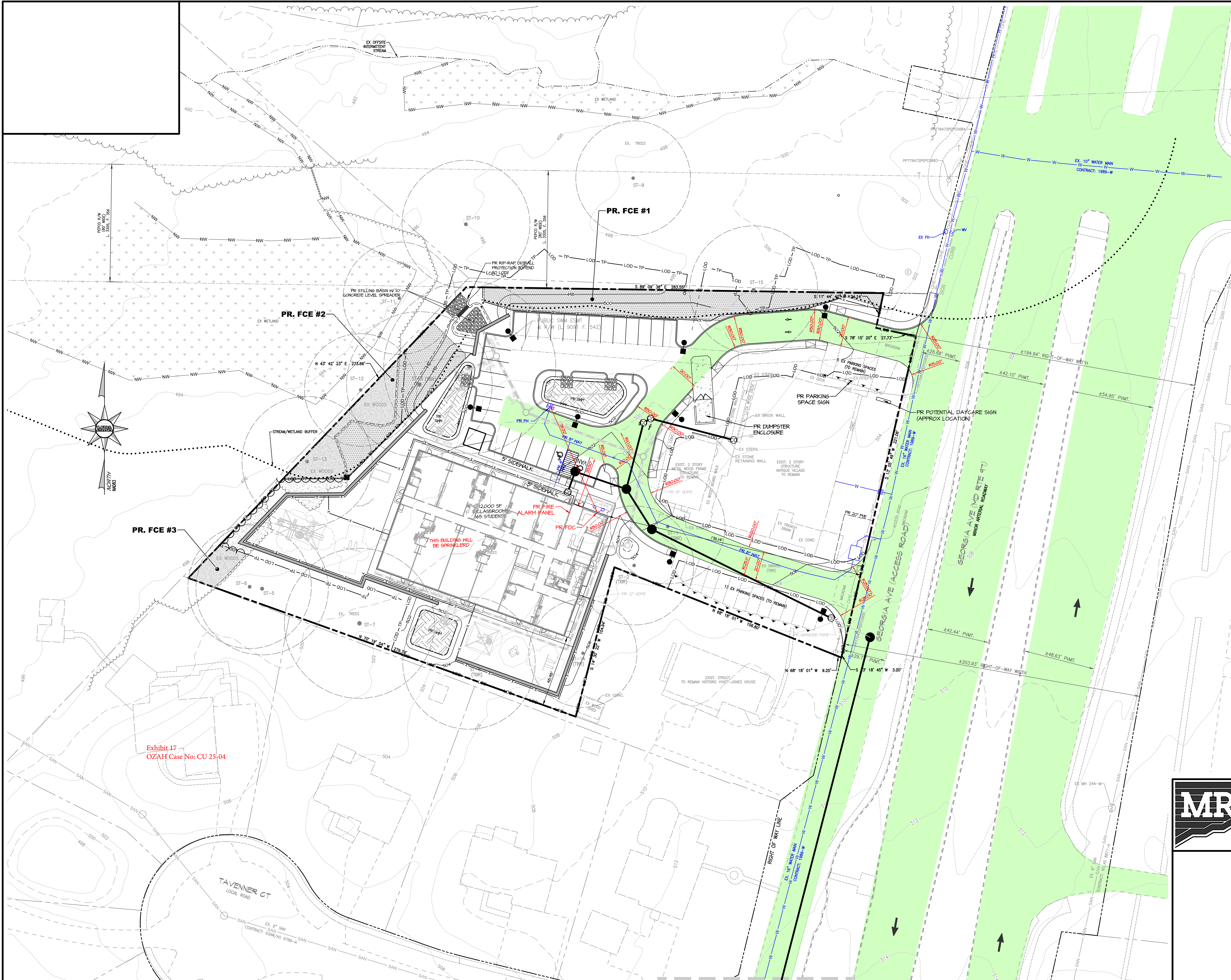


Exhibit 17
 OZAH Case No: CU 25-04

P:\PROJ\2027 Primrose Childcare Facility Plans\02 Exhibits\Overall\Fire Department Access Exhibit.dwg - 11/19/2024 2:25:46 PM, aStone, Inc.
 1:1, Copyright 2024 Morris & Ritchie Associates, Inc.