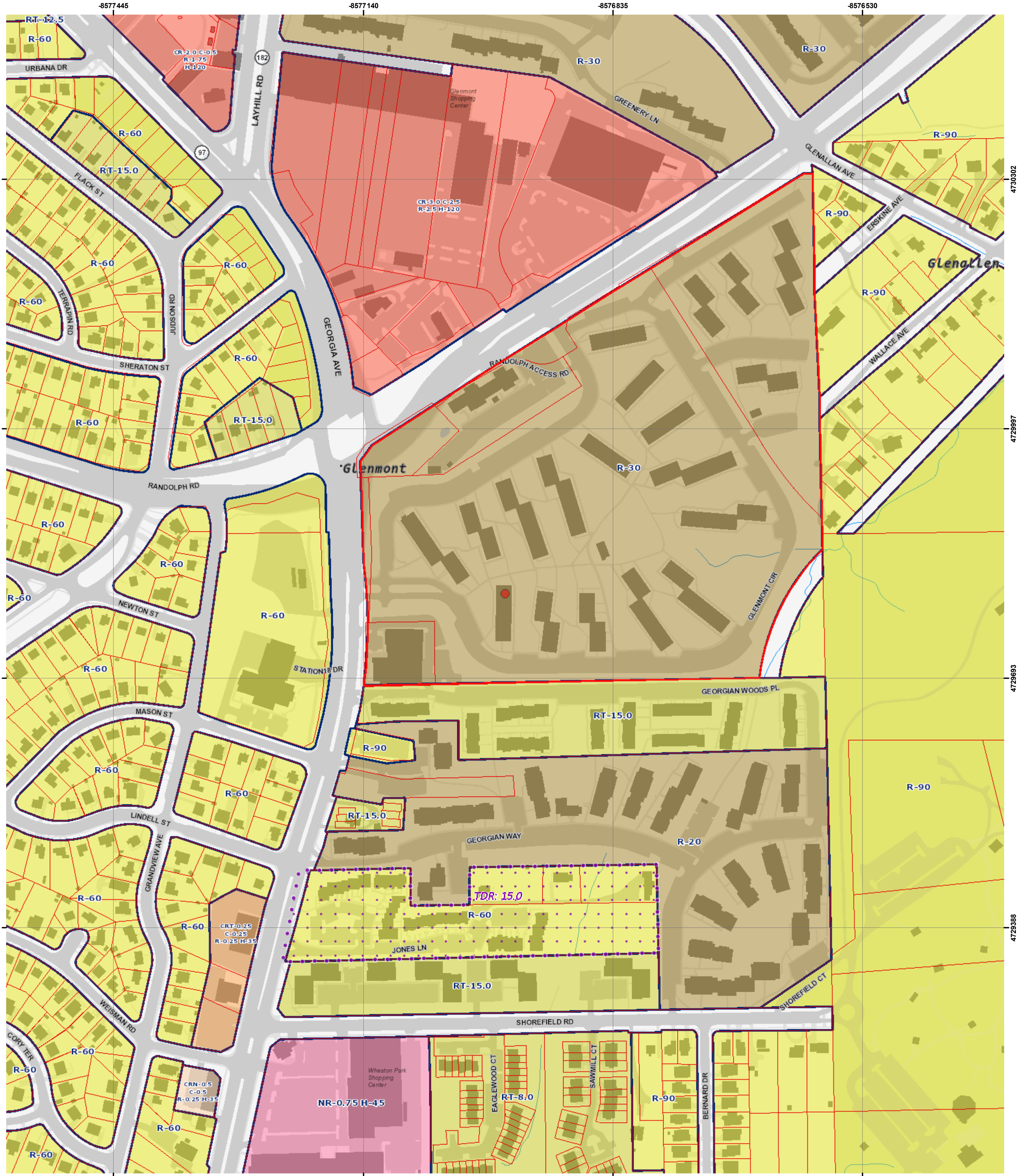


NOTES CONCERNING ZONING IN RIGHTS-OF-WAY
 1. Zone boundaries must not be depicted in public rights-of-way but must run to the centerline of each right-of-way.
 2. Zone boundaries within rights-of-ways previously dedicated by plat or other method of subdivision can be included in map amendments for density purposes; rights-of-way included in a map amendment boundary assume the new zoning assigned in the map amendment.

© Copyright M-NCPPC 2010
 This map is protected by copyright. It may not be copied or reproduced in any form, including electronic means such as digitizing, scanning, and image processing, or by any system now known or to be invented, without permission in writing from the Montgomery County Planning Department.



MONTGOMERY COUNTY ZONING MAP

The Maryland-National Capital Park and Planning Commission Montgomery County Planning Department



Account #	00975436
Address	2300 GLENMONT CIR SILVER SPRING, 20902
Landuse	Multi-Family
Legal Description	PT PAR A AMERICANA GLENMONT APTS
Zone	R-30
Overlay Zone	N/A
TDR Overlay Zone	N/A
Parking District	N/A
CBD	N/A
Parcel, Lot, Block	N766 / N/A, N/A

Special Protection Area	N/A
Urban District	N/A
Enterprise Zone	Glenmont
Arts & Ent. District	N/A
Special Tax District	N/A
Bike/Ped Priority Area	N/A
Urban Renewal Area	N/A
Metro Station Policy Area	N/A
Priority Funding Area	Yes
Septic Tier	Tier 1: Sewer existing
Municipality	N/A
Master Plan	GLENMONT SECTOR PLAN 2012
Historic Site/District	N/A

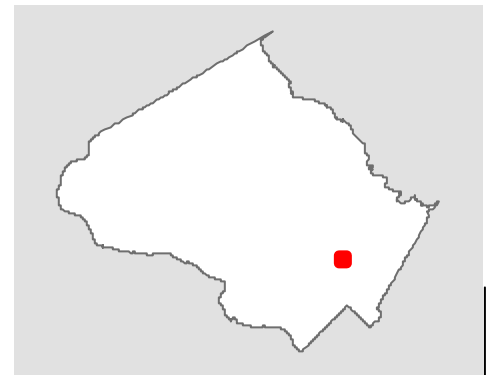
WSSC Grid	216NW02
Map Amendments	G-138 G-757 G-956 G-959
Water/Sewer Categories	W-1 / S-1

Printed: 2/15/2023

1 inch = 250 feet

I certify that this document is a copy of the official Montgomery County Zoning Maps as downloaded on 2/15/2023 from MCATLAS.ORG/ZONING.

Signed



**Exhibit 5
H-149**