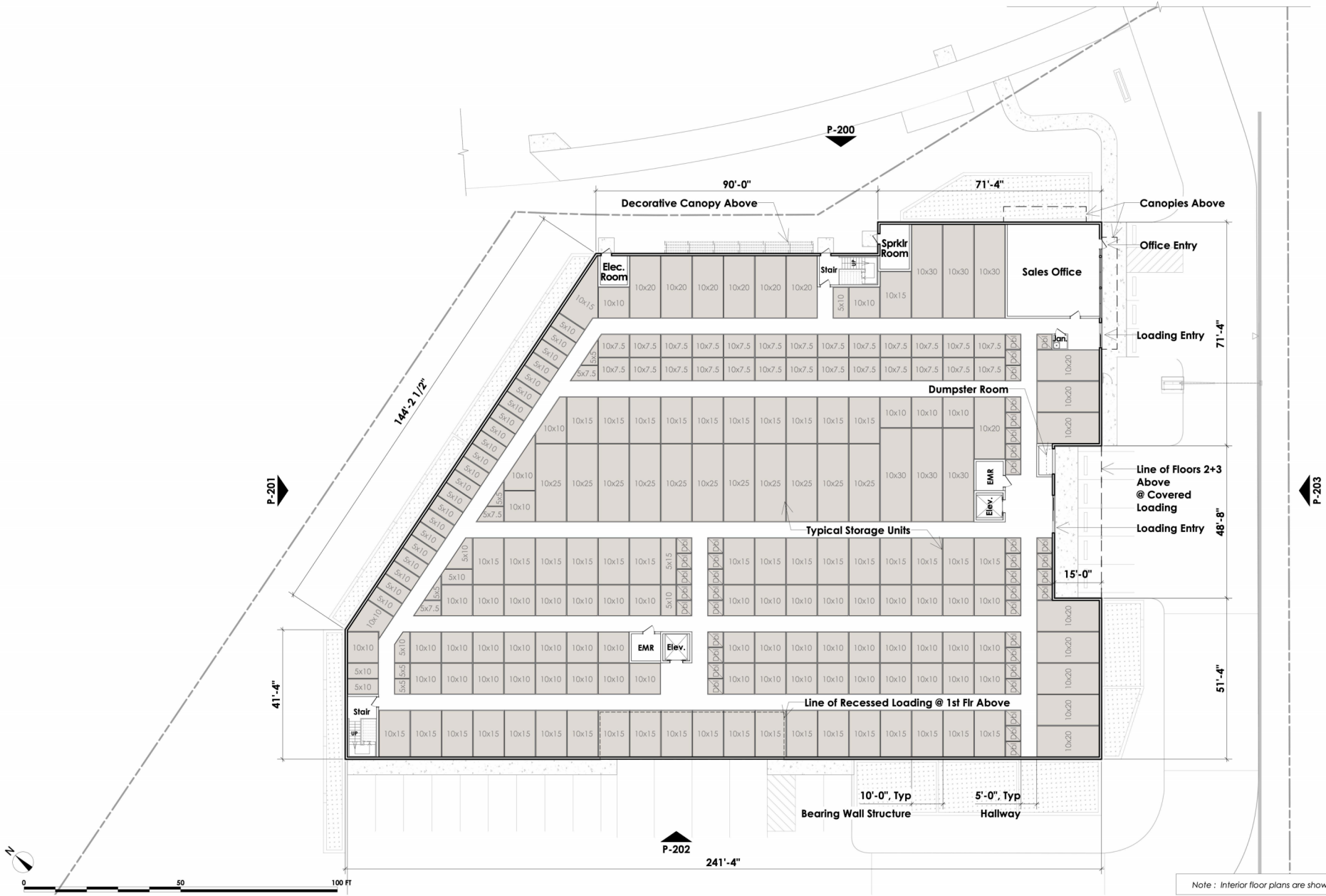


Architectural Submission Set			
PAGE #	SHEET	TITLE	
1	P-001	Architectural Site Plan	
2	P-100	Cellar Floor Plan	
3	P-101	1st Floor Plan	
4	P-102	2nd Floor Plan	
5	P-103	3rd Floor Plan	
6	P-104	Roof Plan	
7	P-200	Building Elevation facing Parklawn Drive (NE)	
8	P-201	Building Elevation facing Adjacent Property (NW)	
9	P-202	Building Elevation facing Railroad (SW)	
10	P-203	Building Elevation facing Adjacent Property (SE)	
11	P-501	Building Materials Index	
12	LP-001	Site Lighting Sheet	

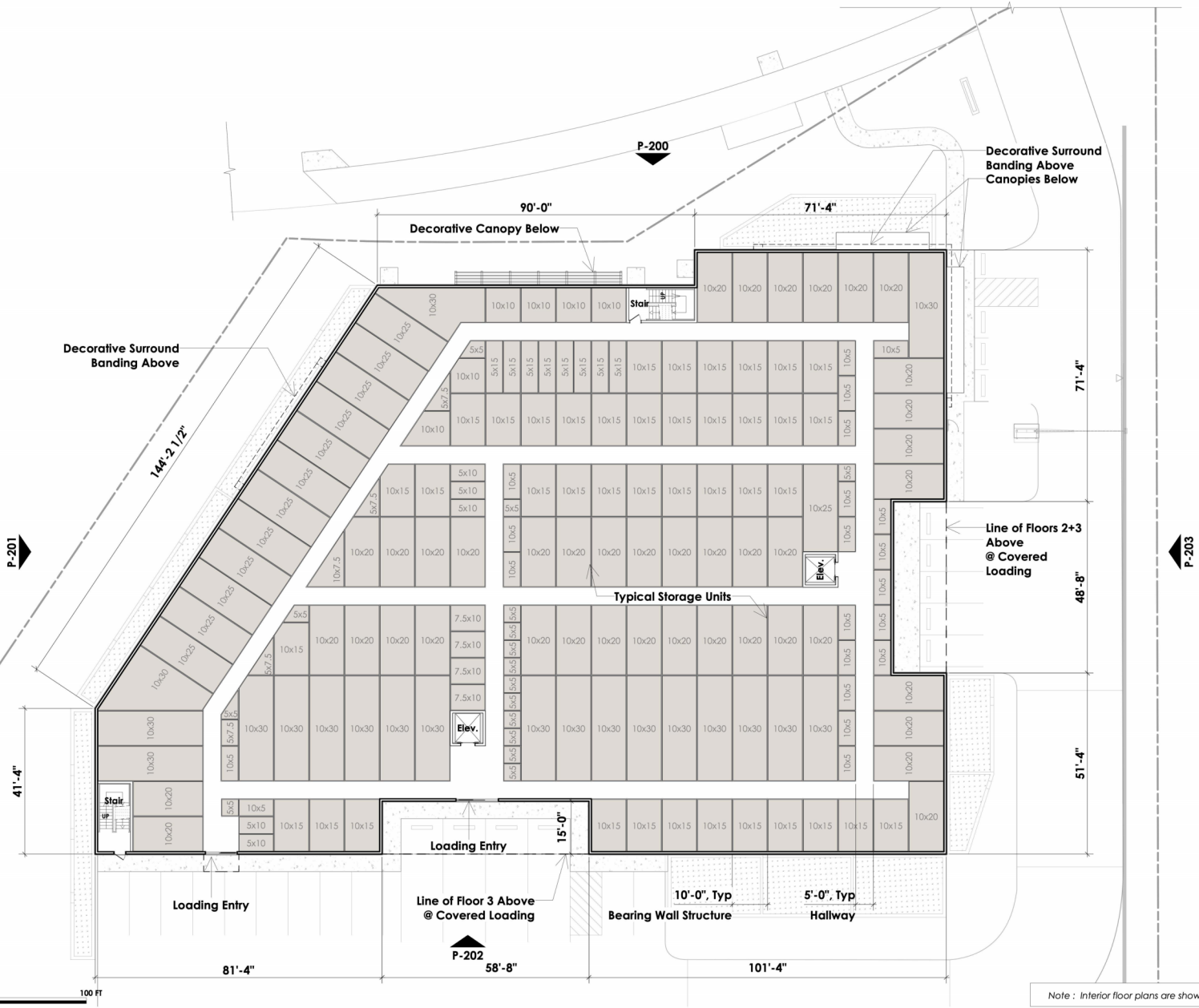


Note : Interior floor plans are shown for illustrative purposes only.



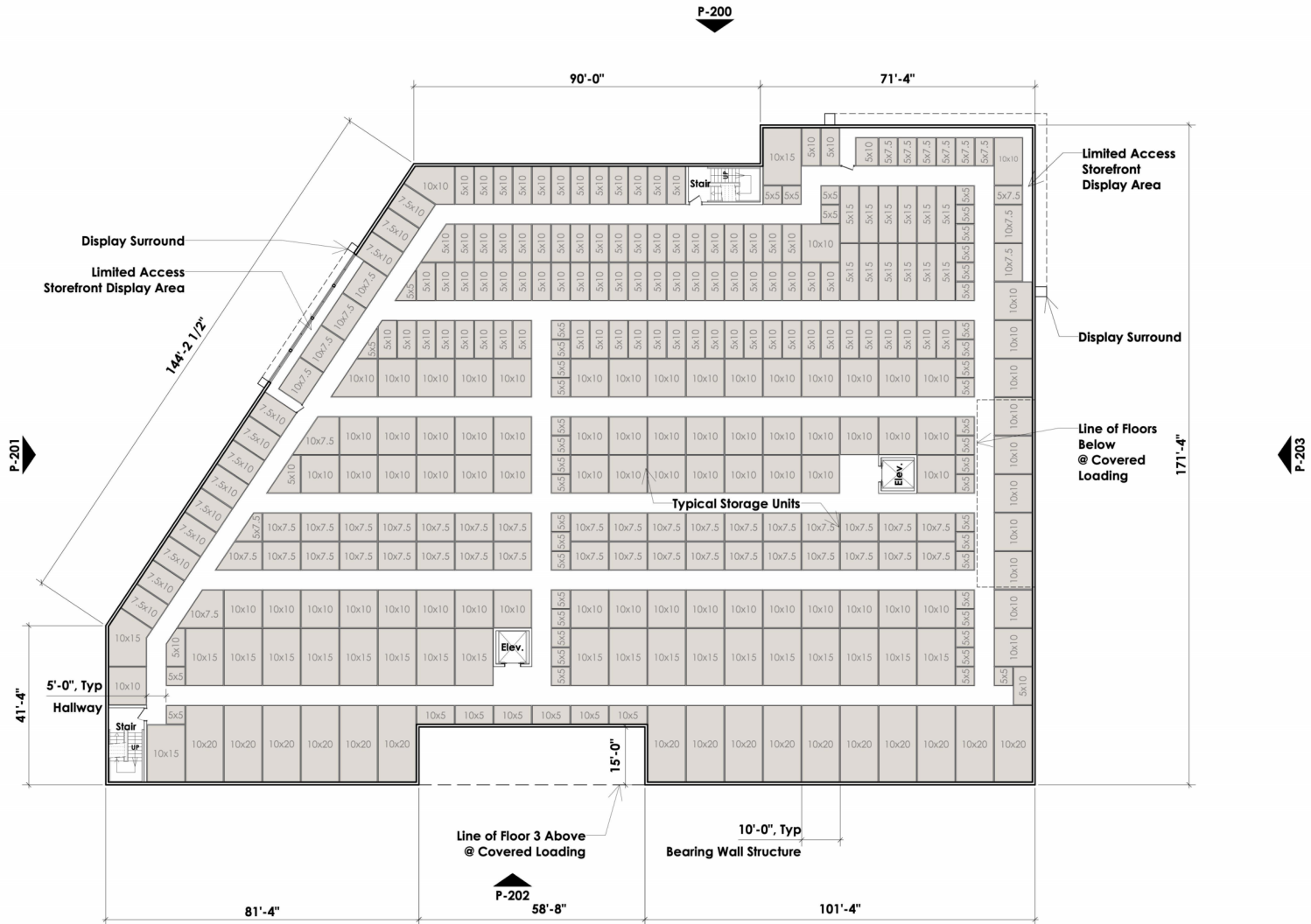


0 50 100 FT



Note : Interior floor plans are shown for illustrative purposes only.

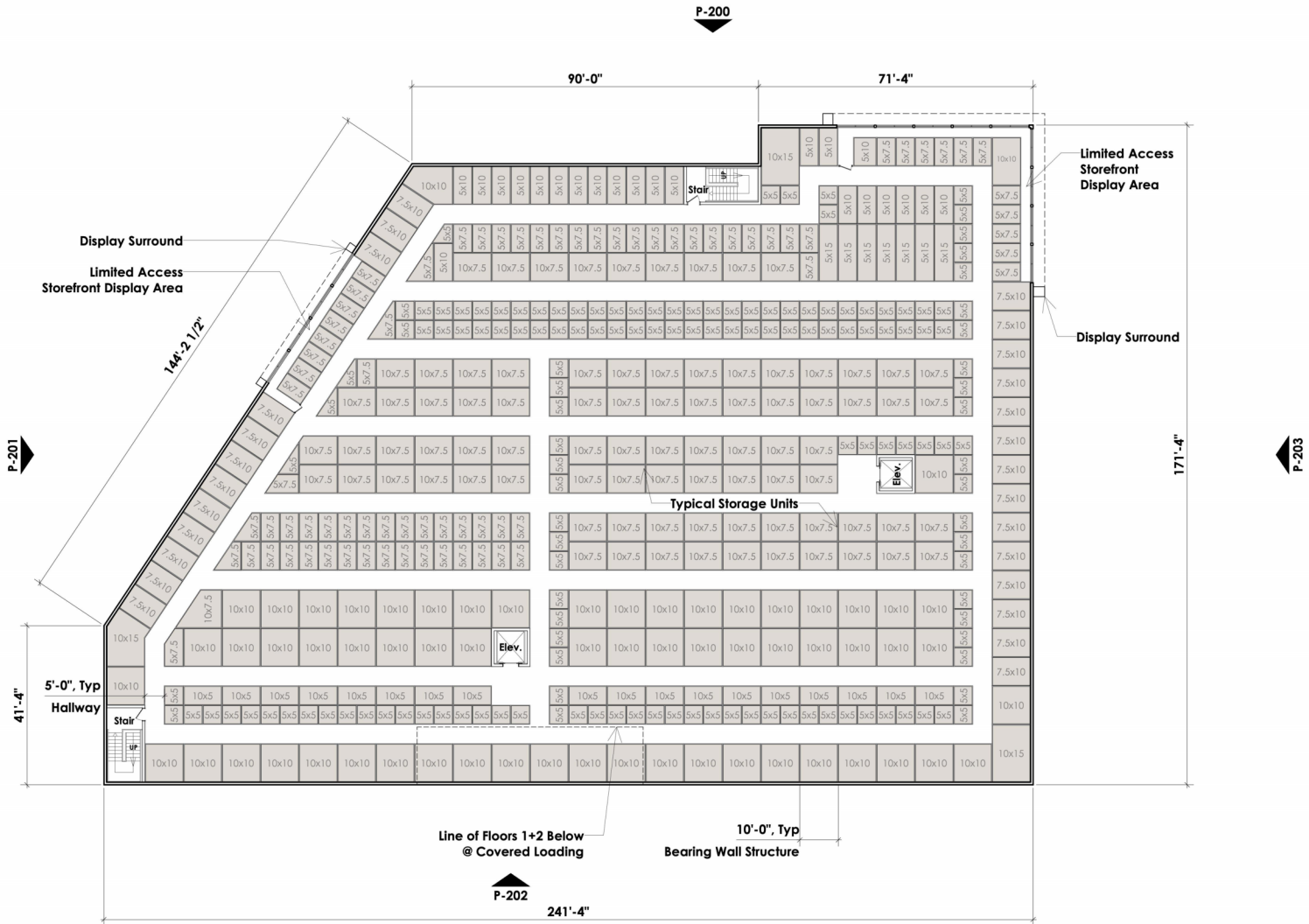




Note : Interior floor plans are shown for illustrative purposes only.

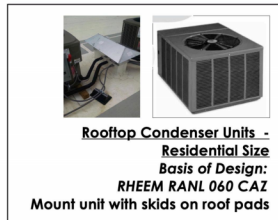




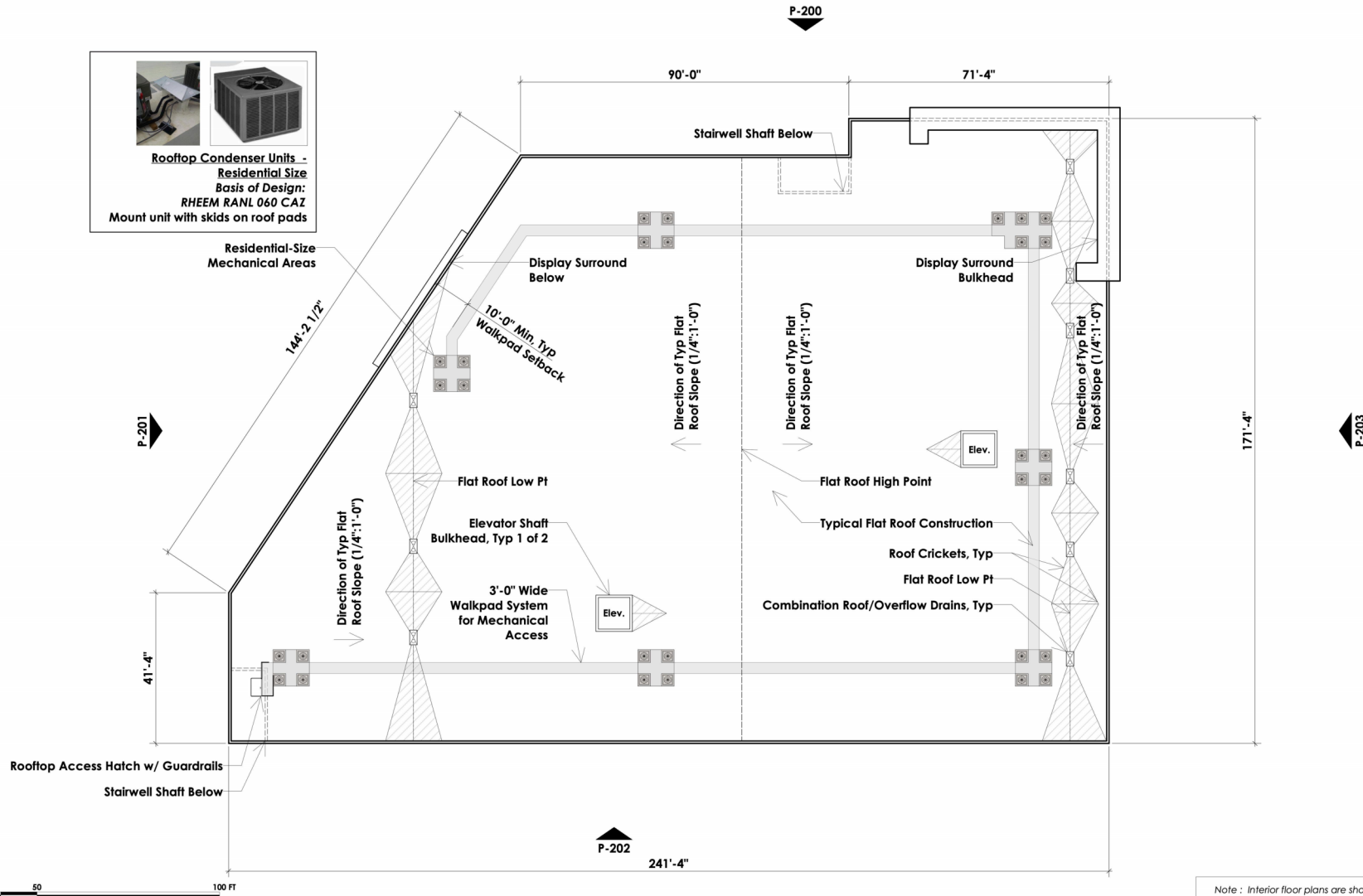


Note : Interior floor plans are shown for illustrative purposes only.





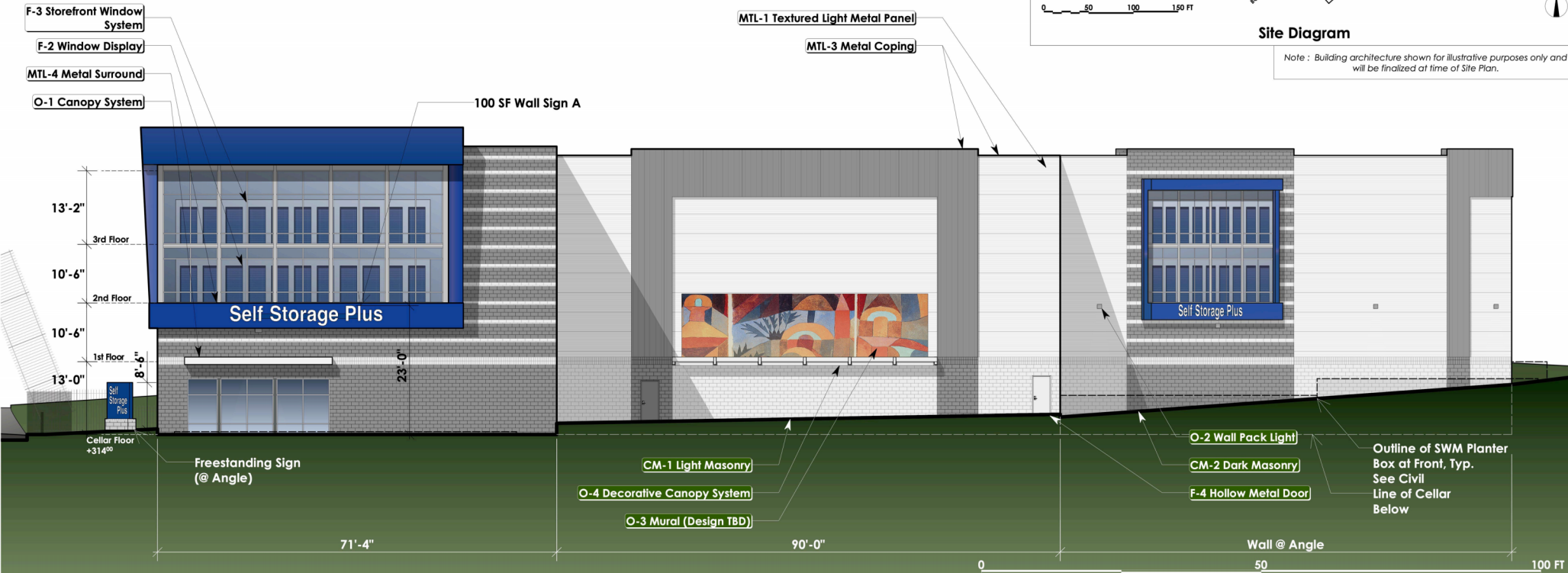
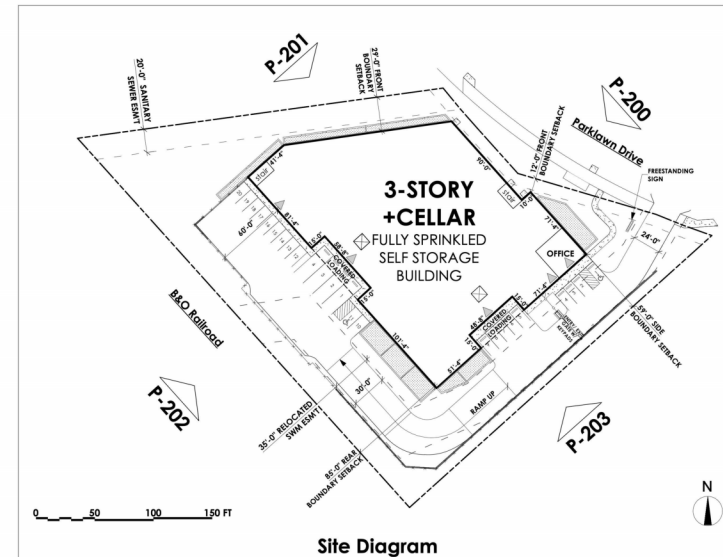
Residential-Size Mechanical Areas

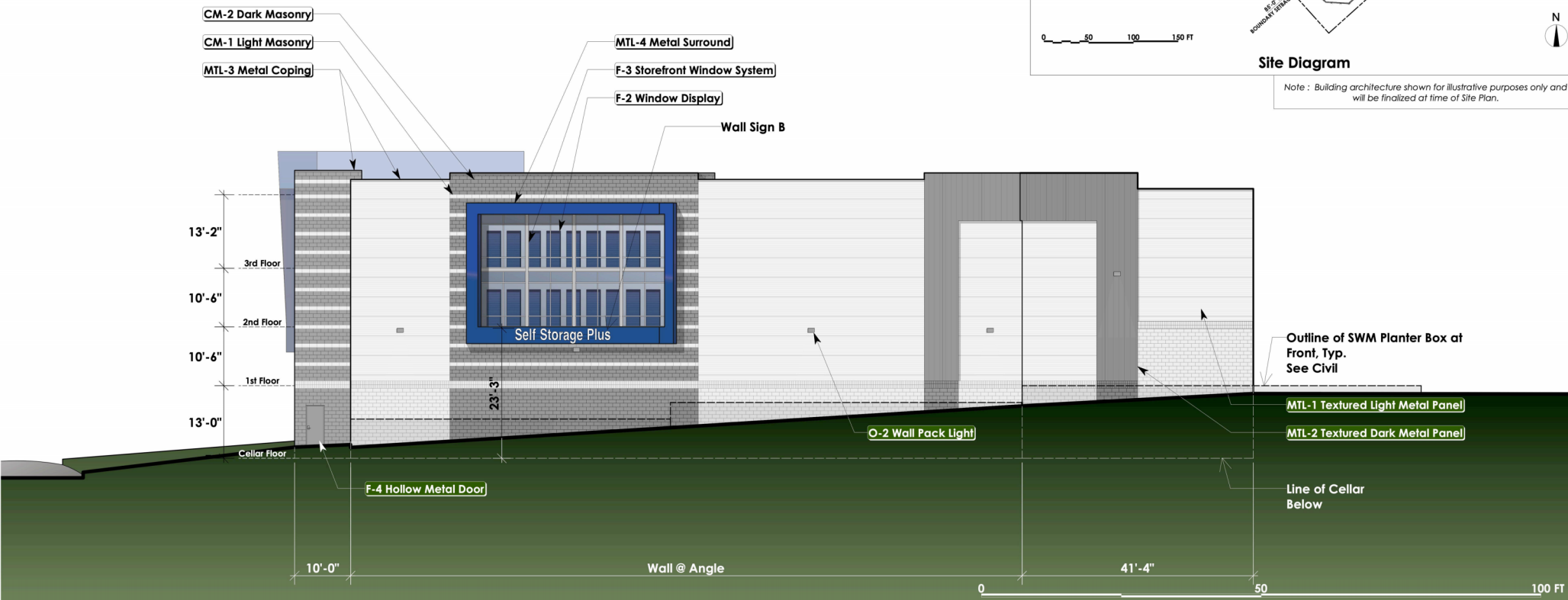
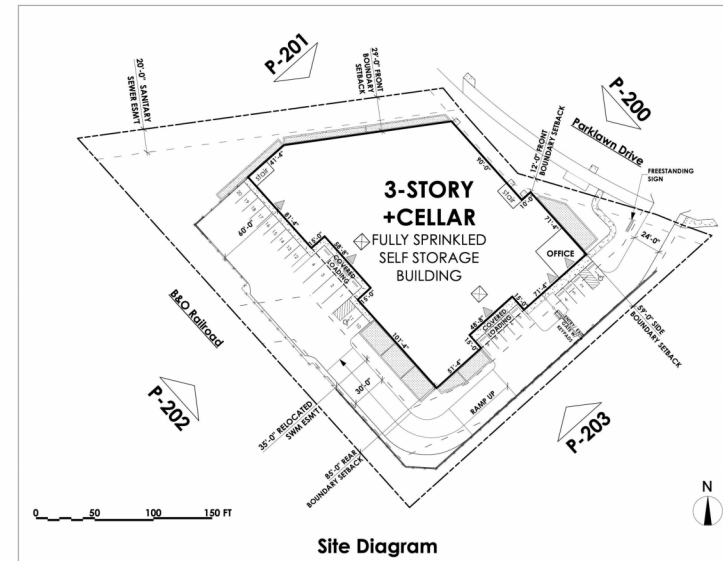


0 50 100 FT

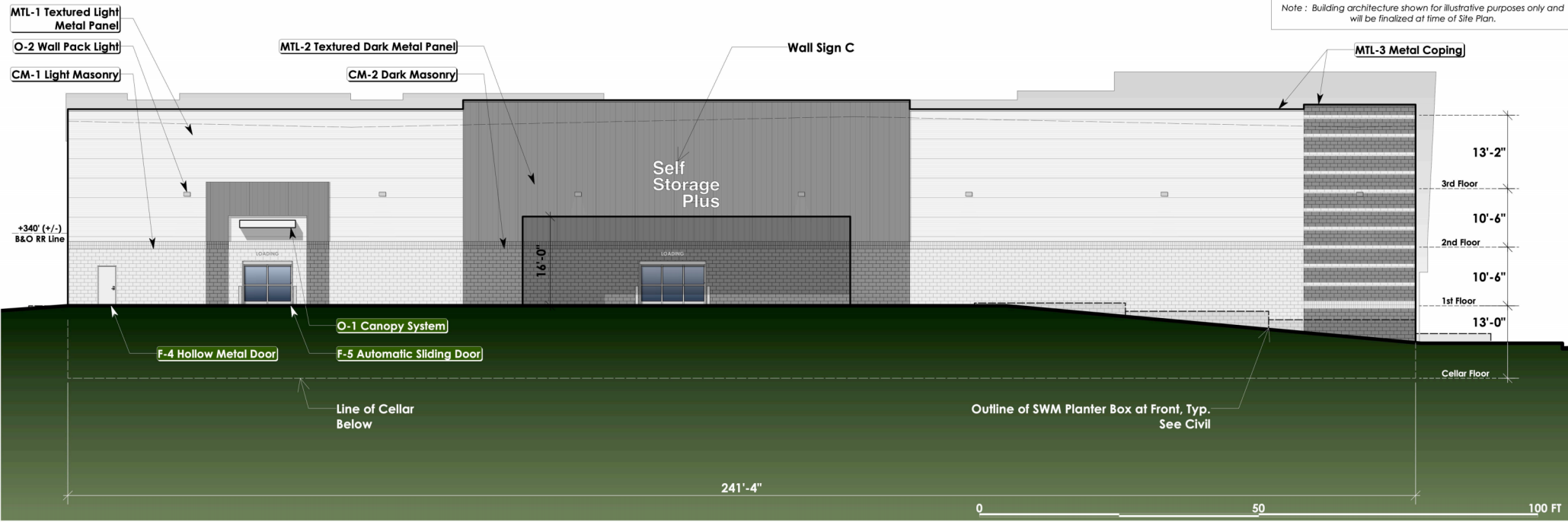
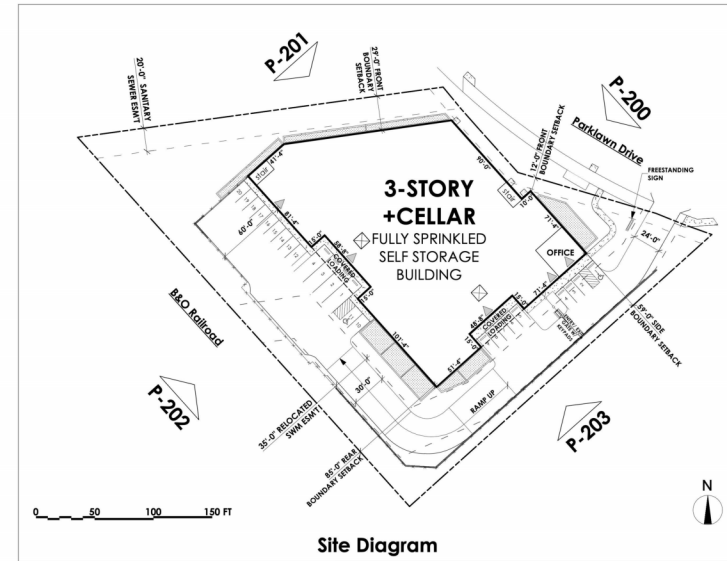
Note : Interior floor plans are shown for illustrative purposes only.

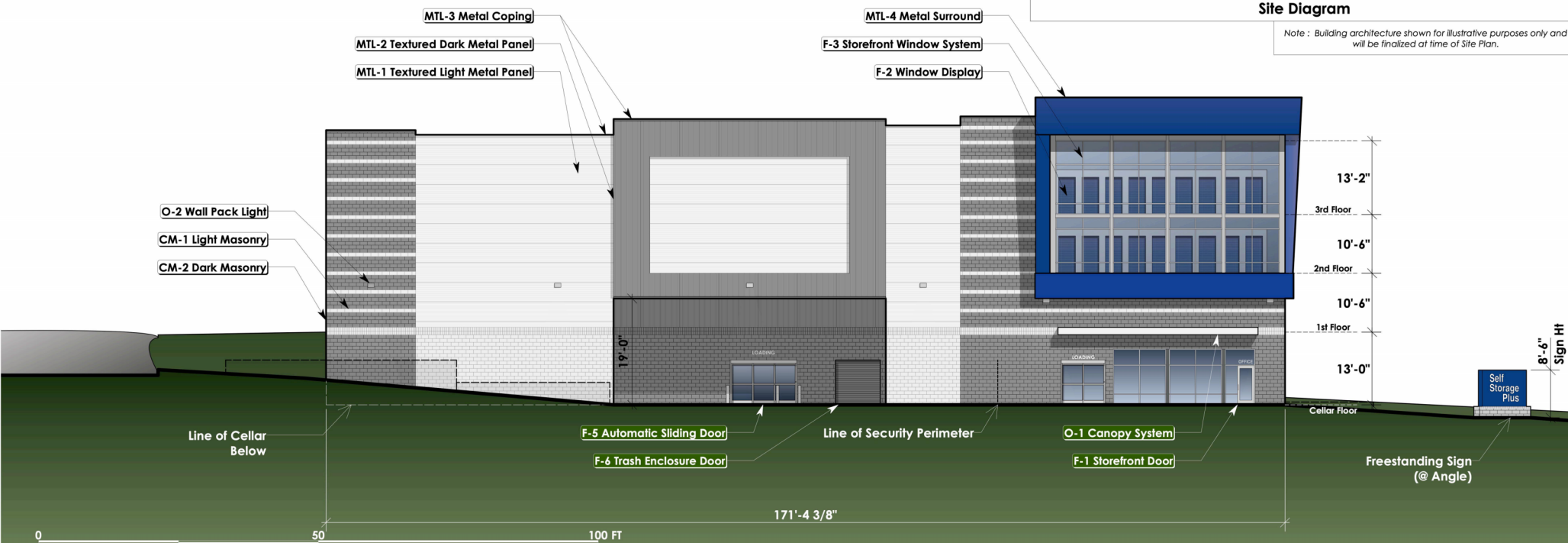
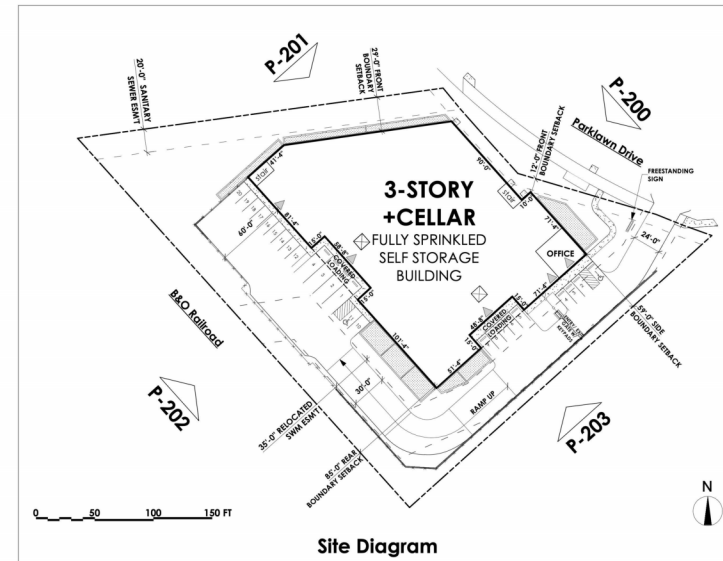








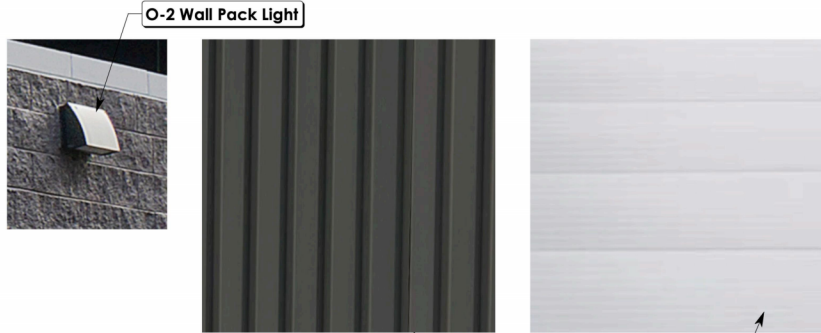






O-4 Decorative Canopy System

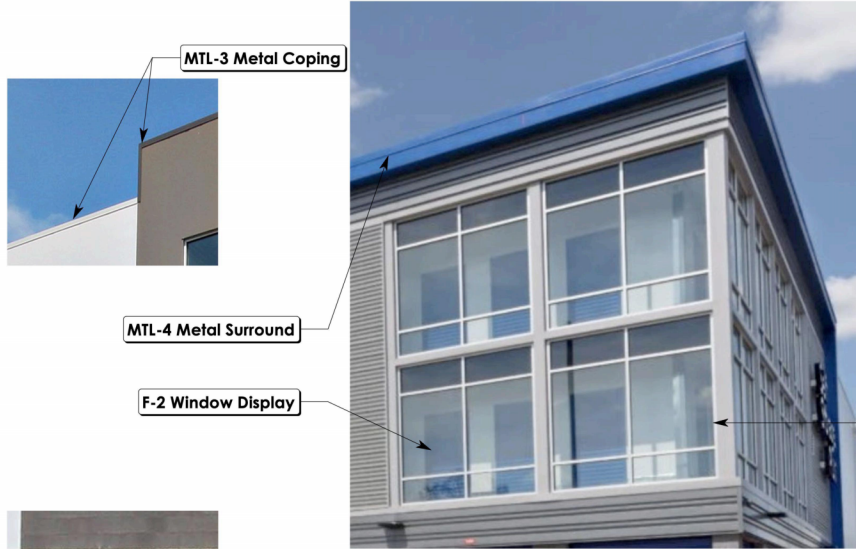
O-3 Mural (Design TBD)



O-2 Wall Pack Light

MTL-2 Textured Dark Metal Panel

MTL-1 Textured Light Metal Panel

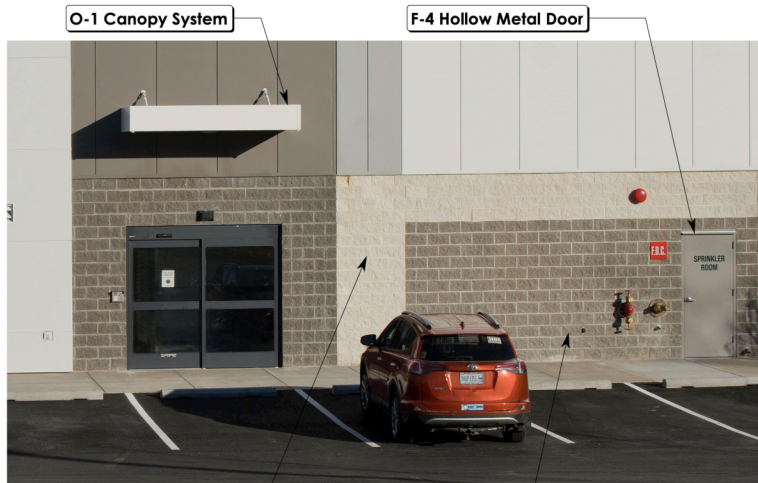


MTL-3 Metal Coping

MTL-4 Metal Surround

F-2 Window Display

F-3 Storefront Window System



O-1 Canopy System

F-4 Hollow Metal Door

CM-1 Light Masonry

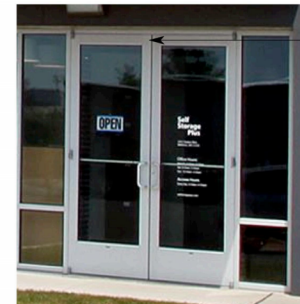
CM-2 Dark Masonry



F-6 Trash Enclosure Door



F-5 Automatic Sliding Door



F-1 Storefront Door

Note: Where specific building materials are identified, substitutions with different building materials may be permitted by Staff, as long as the substitution is in keeping with the character and design intent approved by the Planning Board and shown on the Certified Site Plan.



