

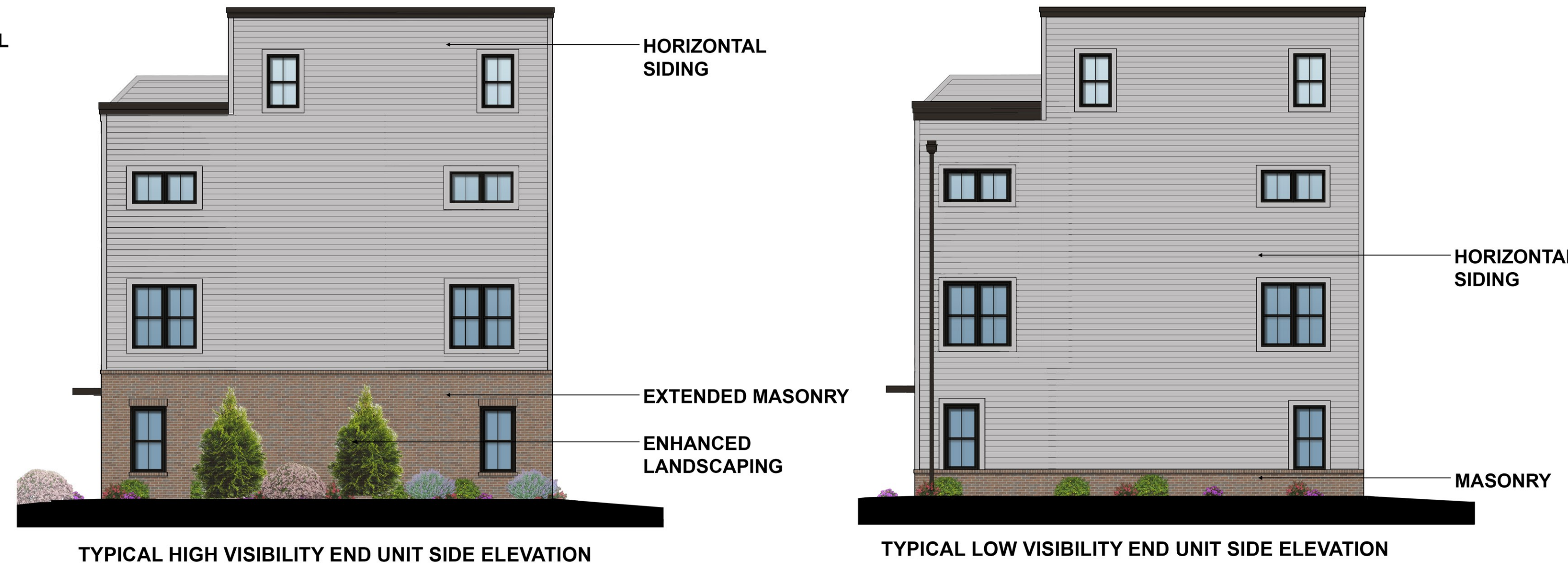
# Townhomes | Architectural Design Elements, Materials, & Styles

## Flat Roof

Industrial/Contemporary Option A



## Flat Roof Side Elevation

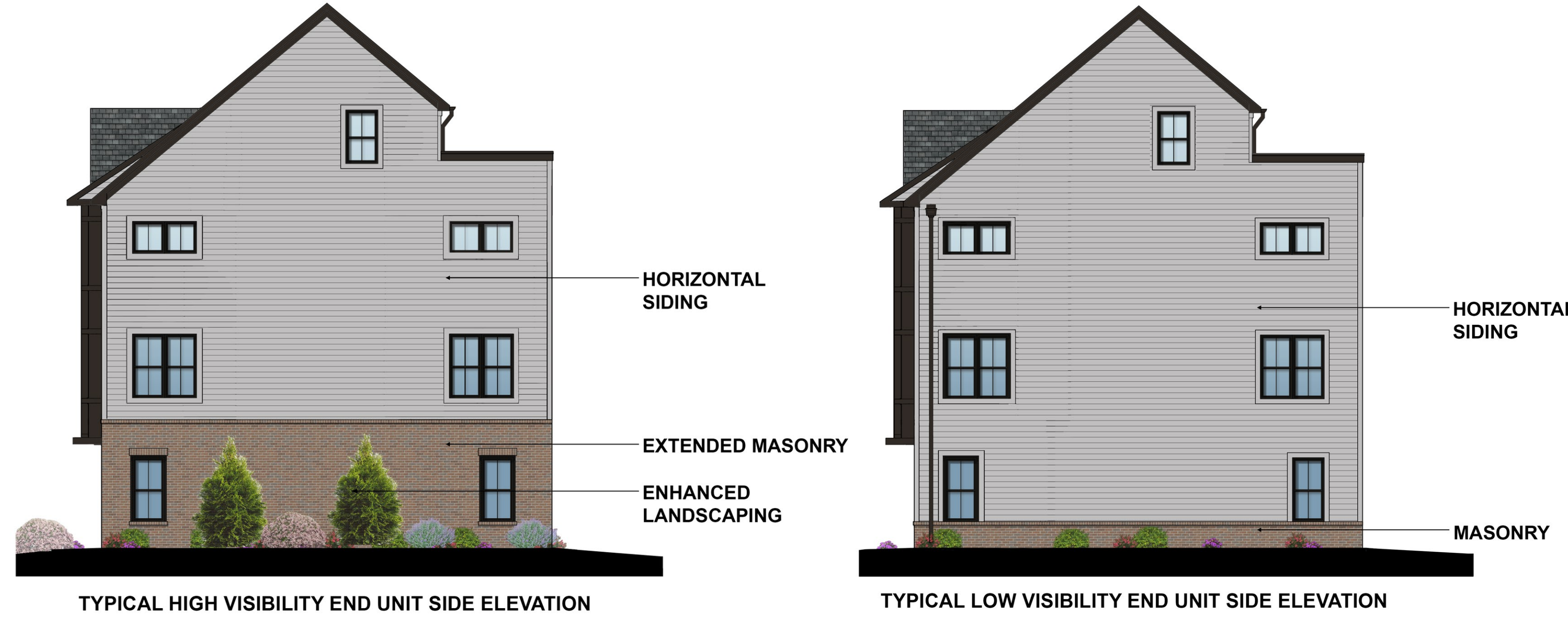


## Flat Roof

Industrial/Contemporary Option B



## Angled Roof Side Elevation



## Detailed Angled Roof

Transitional Option C



NOTE: EXAMPLES, RENDERINGS, MATERIALS, AND FLOOR PLANS SHOWN FOR ILLUSTRATIVE PURPOSES ONLY. WINDOWS, DOORS, CEILINGS, AND ROOM SIZES MAY VARY DEPENDING ON THE OPTIONS AND ELEVATIONS SELECTED. NOT ALL FEATURES ARE SHOWN AND FLOOR PLANS MAY VARY PER ELEVATIONS. ELEVATIONS SHOWN ARE ARTIST'S CONCEPTS. ACTUAL FLOOR PLANS, ELEVATIONS, MATERIALS, AND OPTIONS MAY VARY WHEN THE COMMUNITY OPENS FOR SALES IN THE FUTURE.

**Exhibit 25**  
**H-156**



Architecture + Planning  
888.456.5849  
ktgy.com



**7501 STANDISH PLACE**  
MONTGOMERY COUNTY, MARYLAND

**PRECEDENT IMAGERY**  
MAY 08, 2024

Building architecture will work in tandem with proposed site design to foster compatibility with the surrounding area while simultaneously creating harmonious relationships between the proposed mix of housing types within the Project. Each of the proposed housing types is four stories and will be a maximum of 60 feet in height. Two-unit condominiums are proposed along the perimeter of the community, particularly along the Standish Place frontage. The varied townhouse types are interspersed in building groups throughout the interior of the community and line the proposed internal street grid to create consistent street walls that define private streets and foster an engaging pedestrian environment. Finalized architectural design will emphasize these desirable site design qualities with varied building materials, compatible color palates, and complementary articulation/ fenestration elements between proposed dwelling units.

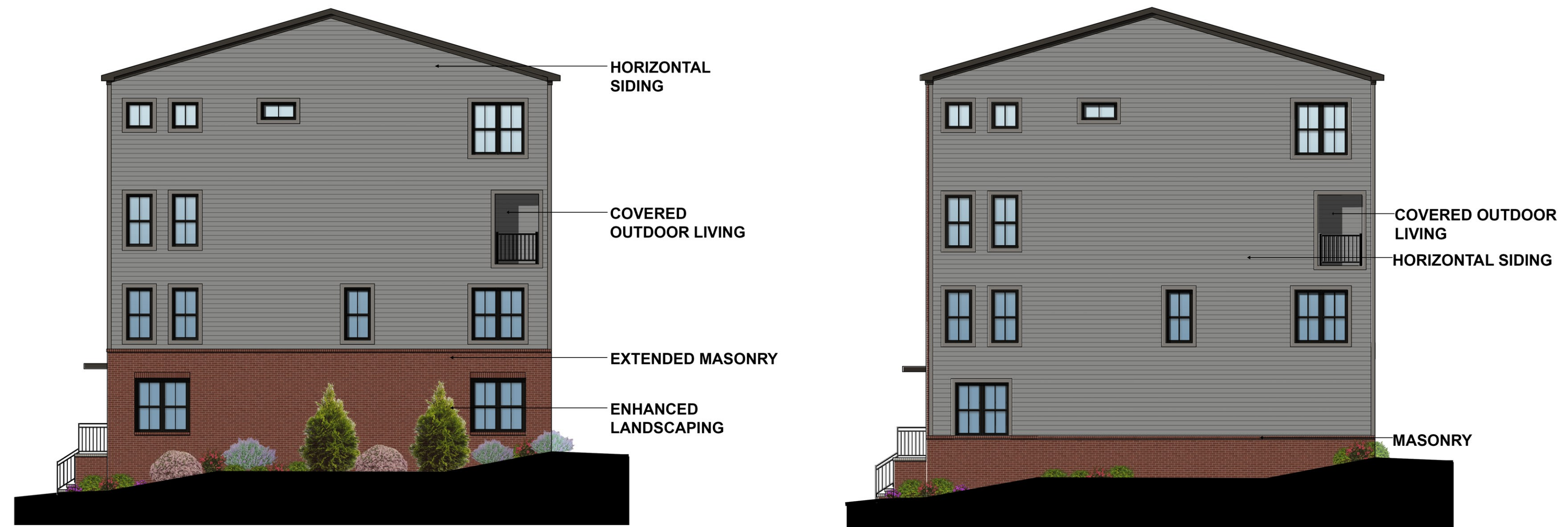
# Two-Unit Condominiums | Architectural Design Elements, Materials, & Styles

## Angled Roof

Industrial/Transitional Option A



## Side Elevation



## Flat Roof

Industrial/Transitional Option B



## Utility Shed Side Elevation



## Detailed Angled Roof

Traditional Option C



**NOTE:**  
EXAMPLES, RENDERINGS, MATERIALS, AND FLOOR PLANS SHOWN FOR ILLUSTRATIVE PURPOSES ONLY. WINDOWS, DOORS, CEILINGS, AND ROOM SIZES MAY VARY DEPENDING ON THE OPTIONS AND ELEVATIONS SELECTED. NOT ALL FEATURES ARE SHOWN AND FLOOR PLANS MAY VARY PER ELEVATIONS. ELEVATIONS SHOWN ARE ARTIST'S CONCEPTS. ACTUAL FLOOR PLANS, ELEVATIONS, MATERIALS, AND OPTIONS MAY VARY WHEN THE COMMUNITY OPENS FOR SALES IN THE FUTURE.



Architecture + Planning  
888.456.5849  
ktgy.com



7501 STANDISH PLACE  
MONTGOMERY COUNTY, MARYLAND

PRECEDENT IMAGERY  
MAY 08, 2024

Building architecture will work in tandem with proposed site design to foster compatibility with the surrounding area while simultaneously creating harmonious relationships between the proposed mix of housing types within the Project. Each of the proposed housing types is four stories and will be a maximum of 60 feet in height. Two-unit condominiums are proposed along the perimeter of the community, particularly along the Standish Place frontage. The varied townhouse types are interspersed in building groups throughout the interior of the community and line the proposed internal street grid to create consistent street walls that define private streets and foster an engaging pedestrian environment. Finalized architectural design will emphasize these desirable site design qualities with varied building materials, compatible color palettes, and complementary articulation/ fenestration elements between proposed dwelling units.