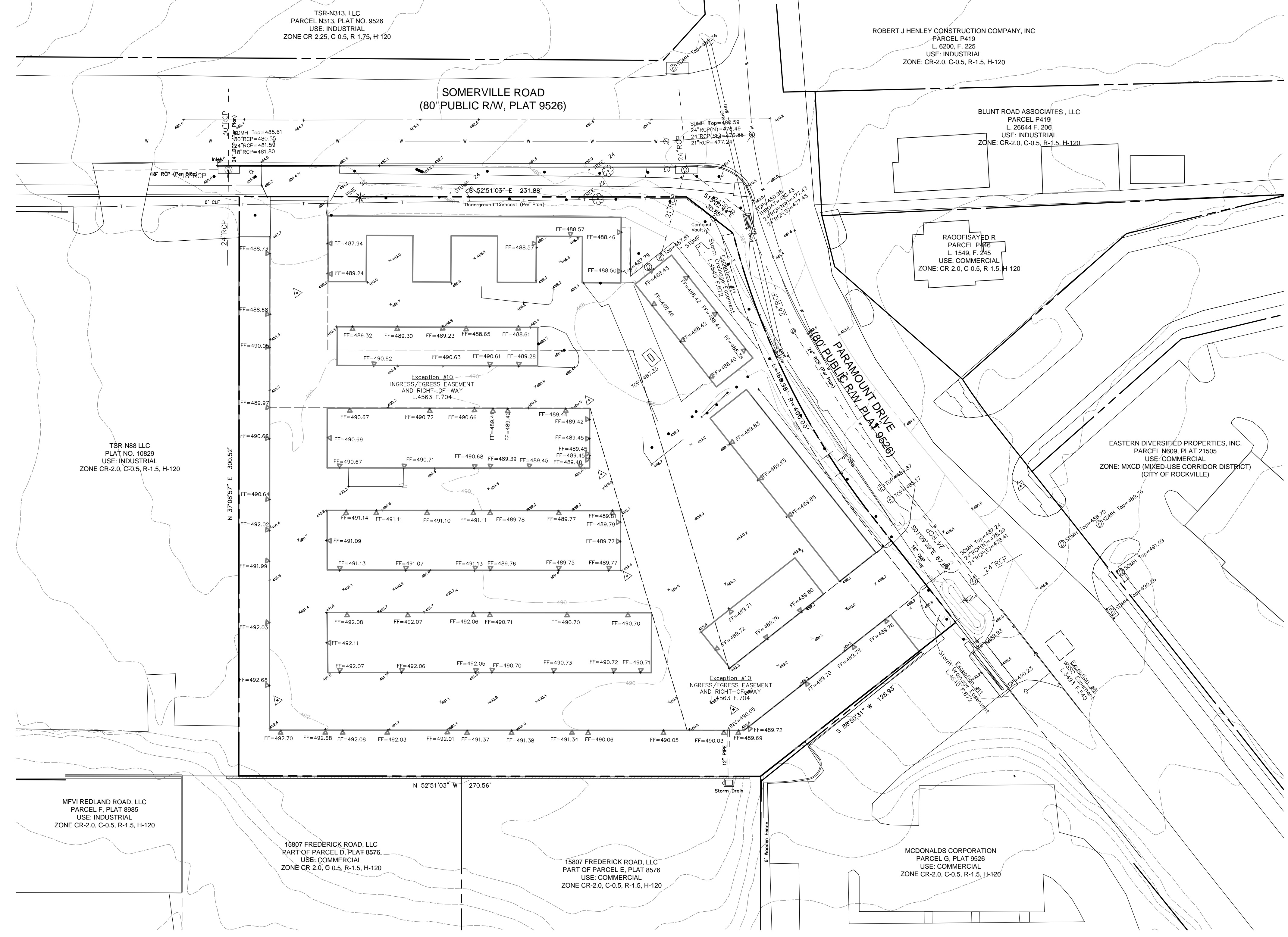


VICINITY MAP  
SCALE 1" = 2,000'

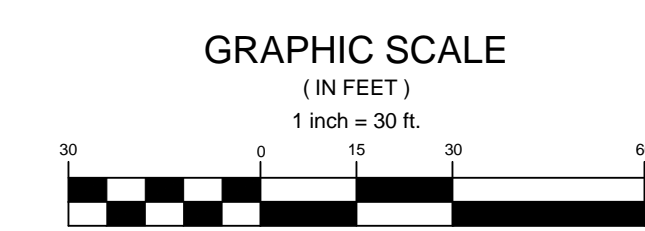
Abbreviation	Symbol
AC	Air Conditioner
BLDG	Building
BLOS	Bullseye
CLF	Cable Link Fence
CONC	Concrete
CC	Concrete Curb
CMP	Corrupted Metal Pipe
CS	Dead
DSC	WSSC/Alarm Control
EM	Edge of Pavement
EPM	Electric Meter
EP	Electric Point Mark (Miss Utility)
FF	Finished Floor
FL	Flow Line
GM	Gas Meter
GRV	Gravel
HW	Heat Wire
HV	Top Ventilation & Air Conditioning
IRV	Iron Valve
IP	Iron Pipe Found
LF	Light Pole
MLB	Metal Box (unidentified)
MN	Monument
OP	Open Pipe Found
P	Pipe
PAV	Pavement
PEM	Pointed Edge Markings
PEP	Pointed Edge Found
R/C	Rebar with Cap Found
R/C	Rebar with Cap Found
S	Survey
SD	Storm Drain
SDM	Storm Drain Manhole
SM	Sewer Manhole
SRM	Stream/Creek
SW	Spot Level (in feet)
TM	Telephone Manhole
UE	Under Electric
W	Water Main
WM	Water Manhole
WPM	Water Point Mark (Miss Utility)
MB	Mailbox
MF	Monument Found
OH	Over-head Wire(s)
P	Parking Meter
PS	Parking Spaces (count)
PH	Photo
TJ	Telephone Junction Box
SM	Sewer Manhole
SP	Sewer Pipeline
S	Split
SC	Sprinkler Control Box/Head
S	Stake
SD	Storm Drain Grate
SD	Storm Drain Manhole
SD	Storm Drain Pipeline
SC	Stream/Creek/Retention
TS	Telephone Manhole
TS	Traffic Signal Cabinet
TS	Traffic Signal Pole
T	Transformer
T	Tree/Overgreen
T	Tree/Ornamental
T	Tree/Shade
T	Tree/Strip or Planting Line
U	Utility Pole
W	Water Blow-off Valve
W	Water Manhole
W	Water Meter
W	Water Pipeline
W	Water Valve
W	Well/Noniron Well
W	Wheelstop
X	X-Cut Found

**NOTES:**

- Vertical Datum is based on NAVD 29, from W.S.S.C. plan #70AW & AS4352A. The vertical datum on this plan is from Field survey methods by MHG on 12/07/2023 and meets National Map Accuracy Standards for a 30 scale topography. By showing the vertical datum at a larger scale does not change the accuracy standards of this datum. Any larger scale detail is for horizontal location clarification only.
- Horizontal Datum is based on the Maryland Coordinate System NAD 83(2011) Datum as projected by NGS. SmartNet North America Virtual Reference Station System (VRSS) was used to establish the horizontal control for this site on 2/24/2023. This survey meets the positional tolerance as specified by Title 9, Subtitle 13, Chapter 6, Sections .04 and .12 of the Minimum Standards of Practice for Land Surveyors.
- The Horizontal and Vertical Tolerances for this drawing meet or exceeds the National Map Standards for a 30 scale map.
- Field survey methods were used in the compilation of the topographical data shown on this plan. The field survey was performed by (MHG) on 2/25/2023.
- The locations of existing underground utilities are shown in their approximate locations as per available records and markings found in the field. The exact locations of all underground utilities should be verified by "MISS UTILITY" prior to excavation. MHG does not express or imply any guarantee or warranty as to the location or existence of any underground utility.
- Subsurface and environmental conditions were not examined or considered as a part of this survey. No statement is made concerning the existence of underground or overhead containers or facilities that may affect the use or development of this site.
- This map or plan and the survey on which it is based were prepared under the responsible charge of the undersigned and are in compliance with COMAR Regulations 09.13.06.04 and 09.13.06.12.T
- This digital data has been generated for the exclusive use of the staff of MHG. MHG makes no guarantee or warranty either assumed or implied as to the accuracy of this data. Should this electronic data be used for Construction Stakes, the company or person using this data does so at their own risk. It is strongly recommended that you verify this information, to your own satisfaction, before using any of this data. Quality control of the drawings and data is the responsibility of the user.



**Exhibit 3  
CU 25-01**



NO.	DESCRIPTION	DATE

TAX MAP GS22 WSSC 221MW08  
PARCEL N421  
L.67249, F. 486  
4TH ELECTION DISTRICT  
MONTGOMERY COUNTY  
MARYLAND

**PARAMOUNT SELF STORAGE**  
**DERWOOD, SOMMERVILLE ADDITION - PARCEL H-2**  
PROJ. MGR DCM  
DRAWN BY DCM  
SCALE 1" = 50'  
DATE 01.21.2024

**EXISTING CONDITIONS PLAN**  
PROJECT NO. 2023.210.12  
SHEET NO. OF