



Welcome to Wheaton Revitalization News!

Wheaton Revitalization News is an email distribution list that will provide frequent updates to the surrounding community on the Wheaton Revitalization project. The purpose of this distribution list is to provide you with project updates and construction activities. For additional information on the Wheaton Revitalization Project please visit <http://www.wheatonproject.com>

Look Ahead - Week of December 3 to December 9

Executive Summary

The project continues to track on-schedule and within budget. Mass excavation for the building and garage foundations continues and is scheduled to finish in early-January 2018. Excavation and installation of the Support of Excavation system continue to be the two major work activities on site.

The Support of Excavation (SOE) system continues to advance as the ongoing excavation deepens the hole. Currently, the depth of the excavation has exceeded 45 feet in places - advancing towards 55 feet which is the bottom of the hole. (See photo)

Follow the Excavation via the Project Camera

A camera has been installed to view construction on the site. [Click here](#) to access the camera.

Demolition of the Mid-County Regional Services Center Building

The Mid-County Regional Services Center Building vacated on August 31 and will be demolished as part of the planned Plaza development south of Reedy Drive. Building demolition is scheduled for mid-December 2017. The building has been decommissioned including disconnection and removal of public utilities (water, gas, electric, CATV). A temporary fence has been installed to safeguard the site.

Service providers formerly located in the Mid-County Regional Services Building have relocated as noted in the [Special Bulletin](#).

Installation of Tie-Back Anchors & Support of Excavation System (SOE)

The Support of Excavation (SOE) continues to advance with the depth of excavation. Installation of tie-back anchors (see photo) continues as the excavation deepens. To further ensure safety, hydraulic "pull-out" testing of tie back anchors continues. The tie back anchors are tested with the use of a hydraulic jack that is calibrated to exert a specified "pull-force" on the grouted tie-back anchor. Elongation of the anchor cables is measured and recorded -

and compared to “allowable and expected elongation” to determine whether the anchor has properly and sufficiently set. This test ensures embeddedness and the subsequent integrity of the anchor.

In all, three (3) tiers of tie-back anchors will be installed as excavation advances to the bottom of the hole. Installation of the second tier of tie-back anchors is nearing completion and several of the third-tier anchors have been installed. As noted previously, tie-back anchors are an integral part of the Support of Excavation system. The Support of Excavation system will advance to the bottom of the hole as it follows the excavation. This will allow for construction of the building’s foundation in a safe and stable environment for both the workforce and public.

Monitoring Support of Excavation

To ensure the utmost level of safety related to the excavation activity, numerous monitoring (survey) points have been installed around the perimeter of the site and are checked daily. Additionally, seven (7) Inclinometers Stations have been installed to independently monitor for slope stability (i.e. movement). Inclinometers are electronic devices lowered 60 feet deep (10 feet below the bottom of the hole) that measure movement in the embankment. Inclinometer readings are taken twice weekly, at minimum, and compared to survey monitoring. No unusual movement has been detected.

Mass Excavation

Mass excavation for the building foundation continues. Currently, the contractor has excavated upwards of 45 feet deep in places (see photo), and continues excavating daily. Approximately 10 feet remain to be excavated. The bottom of the hole is expected to be reached in early-January 2018, weather permitting.

In order to excavate the entire hole, the contractor must continually “move the access ramp around” to complete the excavation in rectangular fashion. At some point, the ramp itself must be excavated. Interestingly, at the end of the excavation process, the excavation equipment must be air-lifted from the bottom of the hole with the use of a crane - as the last order of business is to excavate the final access ramp.

Approximately forty (40) dump trucks daily are assigned the task of hauling away excavated soils, making several trips daily. All trucks are entering and exiting the site using the construction entrance along Grandview Avenue. Thus far, excavation is advancing faster than scheduled due to the recent stretch of unseasonably favorable weather.

Dust Control

Dust has been less of an issue as the hole deepens. Nevertheless, the contractor sweeps daily using a power broom and continually sweeps Grandview Avenue and the surrounding area. A vacuum street sweeper assists with dust and dirt control. Further, a periodic wash down of Grandview Avenue will occur as well. The project team will continue daily housekeeping to control dust and dirt.

All soils hauled offsite are tested in compliance with MDE requirements to ensure “clean soils” with no contamination leave the site.

Site Dewatering

Mass excavation and construction of the building foundation requires the lowering of the groundwater table, which is generally 35 feet below the existing ground surface. The dewatering process will temporarily lower the

groundwater roughly 25 feet to allow for construction. Dewatering is currently underway 24/7 and will continue over the next 22 months at which time pumping will discontinue and groundwater will restore to its normal levels. All water discharged from the site is treated for proper pH levels per the Maryland Department of Environment (MDE) requirements.

Street Lighting Added – Lighting Levels Increased

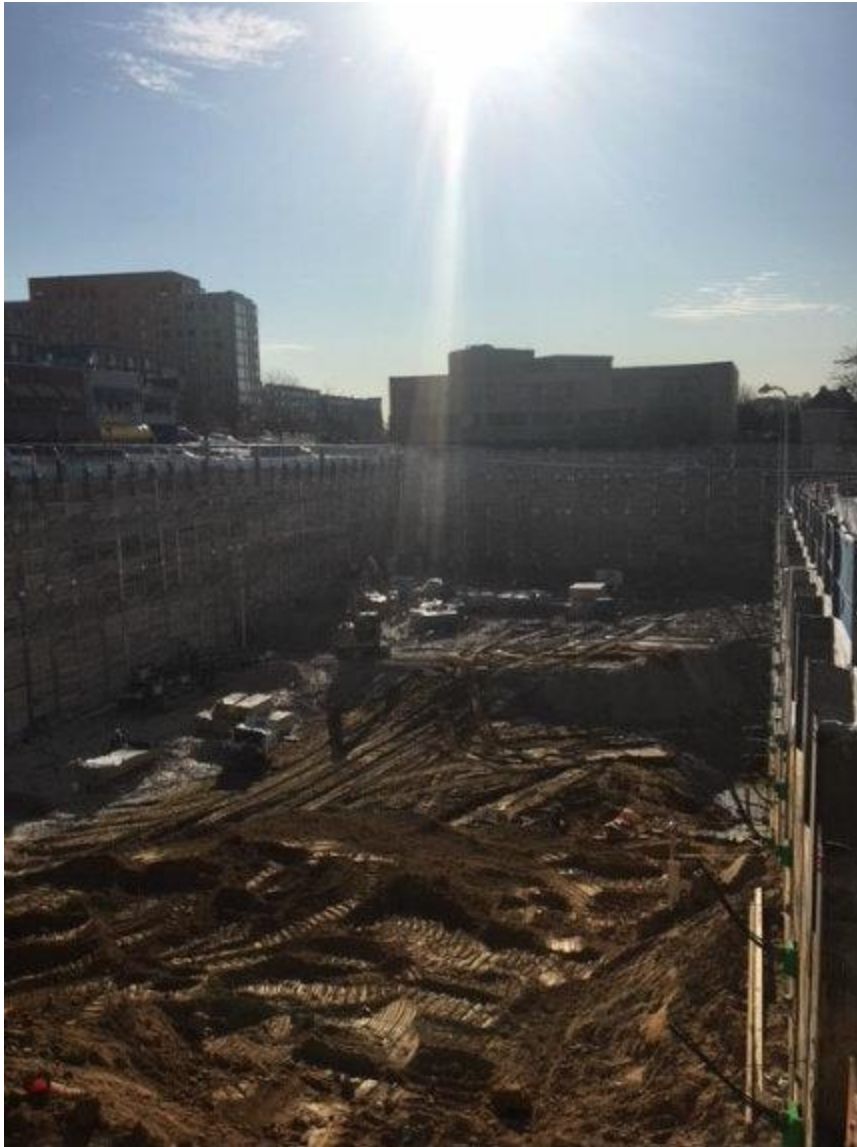
Additional street lighting has been added along Reddie Drive and Triangle Lane. The lighting levels have been increased as a measure of safety as daylight diminishes during winter months and in conjunction with the upcoming holiday season.

Administrative Preparations

The Contractor, Architect, Developer, and Montgomery County Department of Transportation (MCDOT) are busy exchanging and reviewing detailed submittals to ensure strict compliance with project specifications and all applicable building codes. In all, over 2,000 separate submittals will be developed, exchanged, and reviewed by the project team. No construction is permitted to proceed until all related material submittals, craftsman qualifications, testing, and Quality Assurance/Quality Control has been approved.

Upcoming and Ongoing Activities

- Mass excavation and disposal of excess soils.
- Support of Excavation including placement of lagging boards and tie-back anchors.
- Hydraulic testing of tie-back anchors.
- Monitoring Inclinator stations for movement.
- Testing of all soils before hauling offsite.
- Testing and monitoring of groundwater discharge.



The Hole Deepens at the South End near Reddie Drive

Update your subscriptions, modify your password or email address, or stop subscriptions at any time on your [Subscriber Preferences Page](#). You will need to use your email address to log in. If you have questions or problems with the subscription service, please contact subscriberhelp.govdelivery.com.

This service is provided to you at no charge by [Department of Transportation](#) of [Montgomery County MD](#).

Visit [Wheaton Revitalization Project](#) page to learn more.

This email was sent using GovDelivery Communications Cloud on behalf of: Montgomery County Maryland · Monroe Street · 13th Floor Rockville · Rockville, MD 20850 · (240) 777-2900

