



## **Welcome to Wheaton Revitalization News!**

**Wheaton Revitalization News** is an email distribution list that will provide frequent updates to the surrounding community on the Wheaton Revitalization project. The purpose of this distribution list is to provide you with project updates and construction activities. For additional information on the Wheaton Revitalization Project please visit <http://www.wheatonproject.com>

## **Look Ahead - Week of November 19 to November 25**

### **Executive Summary**

The project continues to track on-schedule and within budget. Mass excavation for the building and garage foundations continues and is scheduled to finish in early-January 2018. Excavation and installation of the Support of Excavation system continue as the two major work activities on site.

The Support of Excavation (SOE) system continues to advance as the ongoing excavation deepens the hole. Currently, the depth of the excavation has exceeded 40 feet in places - advancing towards 55 feet which is the bottom of the hole. (See photos)

### **Follow the Excavation via the Project Camera**

A camera has been installed to view construction on the site. [Click here](#) to access the camera.

### **Demolition of the Mid-County Regional Services Center Building**

The Mid-County Regional Services Center Building vacated on August 31 and will be demolished as part of the planned Plaza development south of Reedy Drive. Building demolition is scheduled for mid-December 2017. The building has been decommissioned including disconnection and removal of public utilities (water, gas, electric, CATV). A temporary fence has been installed to safeguard the site.

Service providers formerly located in the Mid-County Regional Services Building have relocated as noted in the [Special Bulletin](#).

### **Installation of Tie-Back Anchors & Support of Excavation System (SOE)**

The Support of Excavation (SOE) continues to advance with the depth of excavation. Installation of tie-back anchors (see photo) continue as the excavation deepens. To further ensure safety, hydraulic "pull-out" testing of tie back anchors continues. The tie back anchors are tested with the use of a hydraulic jack that is calibrated to exert a specified "pull-force" on the grouted tie-back anchor. Elongation of the anchor cables is measured and recorded -

and compared to “allowable and expected elongation” to determine whether the anchor has properly and sufficiently set. This test ensures embeddedness and the subsequent integrity of the anchor.

In all, three (3) tiers of tie-back anchors will be installed as excavation advances to the bottom of the hole. Installation of the second tier of tie back anchors is nearing completion and several of the third-tier anchors have been installed. As noted in previous reports, tie-back anchors are an integral part of the Support of Excavation system. The Support of Excavation system will advance to the bottom of the hole as it follows the excavation. This will allow for construction of the building’s foundation in a safe and stable environment for both the workforce and public.

### **Monitoring Support of Excavation**

To ensure the utmost level of safety related to the excavation activity, numerous monitoring (survey) points have been installed around the perimeter of the site and are checked daily. Additionally, seven (7) Inclinometers Stations have been installed to independently monitor for slope stability. Inclinometers are electronic devices lowered 60 feet deep (10 feet below the bottom of the hole) that measure movement. Inclinometer readings are taken twice weekly, at minimum, and compared to survey monitoring. No unusual movement has been detected.

### **Mass Excavation**

Mass excavation for the building’s foundation continues. Currently, the contractor has excavated upwards of 40 feet deep in places (see photo), and continues excavating daily. The bottom of the hole is expected to be reached in early-January 2018, weather permitting.

To excavate the entire hole, the contractor must continually “move the access ramp around” to complete the excavation in rectangular fashion. At some point, the ramp itself must be excavated. Interestingly, at the end of the process, the excavation equipment must be air-lifted from the bottom of the hole with the use of a crane since the last order of business is to excavate the access ramp from top-to-bottom.

Approximately forty (40) dump trucks daily are assigned the task of hauling away excavated soils, making several trips daily. All trucks are entering and exiting the site using the construction entrance along Grandview Avenue. Thus far, excavation is advancing faster than scheduled due to the recent stretch of favorable weather.

### **Dust Control**

Dust has been less of an issue as the hole deepens. Nevertheless, the contractor sweeps daily using a power broom and continually sweeps Grandview Avenue and the surrounding area. A vacuum street sweeper will be brought on-site to assist with dust and dirt controls. Further, a periodic wash down of Grandview Avenue will occur as well. The project team will continue daily housekeeping to control dust and dirt.

All soils hauled offsite are tested in compliance with MDE requirements to ensure “clean soils” with no contamination leave the site.

### **Site Dewatering**

Mass excavation and construction of the building’s foundation requires the lowering of the groundwater table, which is generally 35 feet below the existing ground surface. The dewatering process will temporarily lower the

groundwater roughly 25 feet to allow for construction. Dewatering is currently underway 24/7 and will continue over the next 22 months at which time pumping will discontinue and groundwater will restore to its normal levels.

### **Street Lighting Added – Lighting Levels Increased**

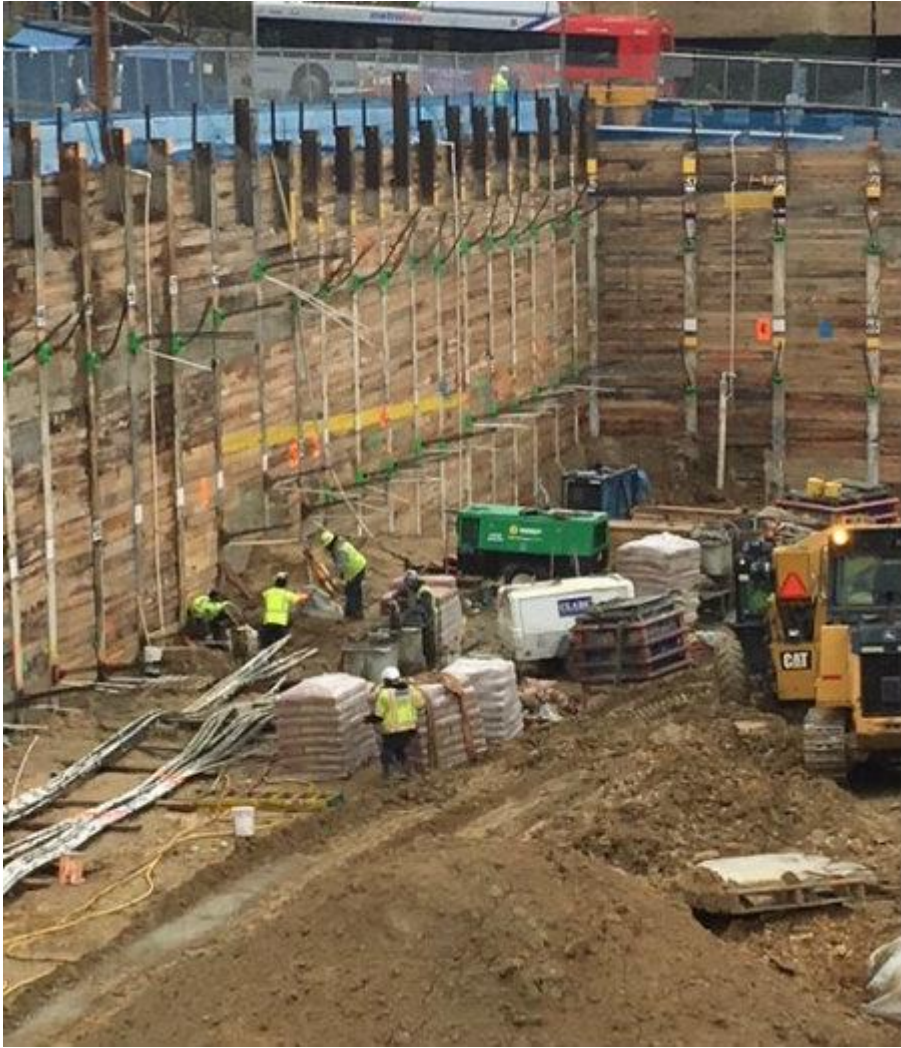
Additional street lighting has been added along Reddie Drive and Triangle Lane. The lighting levels have been increased as a safety measure since daylight diminishes during winter months and in conjunction with the upcoming holiday season.

### **Administrative Preparations**

The Contractor, Architect, Developer, and Montgomery County Department of Transportation (MCDOT) are busy exchanging and reviewing detailed submittals to ensure strict compliance with project specifications and all applicable building codes. In all, over 2,000 separate submittals will be developed, exchanged, and reviewed by the project team. No construction is permitted to proceed until all related material submittals, craftsman qualifications, testing, and Quality Assurance/Quality Control have been approved.

### **Upcoming and Ongoing Activities**

- Mass excavation and disposal of excess soils.
- Support of Excavation including placement of lagging boards and tie-back anchors.
- Hydraulic testing of tie-back anchors.
- Monitoring Inclinometer stations for movement.
- Testing of all soils before hauling offsite.
- Testing and monitoring of groundwater discharge.



**The Hole Deepens at the South End near Reddie Drive**



### Excavator Removing an Earthen Ramp

---

Update your subscriptions, modify your password or email address, or stop subscriptions at any time on your [Subscriber Preferences Page](#). You will need to use your email address to log in. If you have questions or problems with the subscription service, please contact [subscriberhelp.govdelivery.com](mailto:subscriberhelp.govdelivery.com).

This service is provided to you at no charge by [Department of Transportation](#) of [Montgomery County MD](#).

Visit [Wheaton Revitalization Project](#) page to learn more.