



Medical Facilities Development and University Expansion

Naval Support Activity Bethesda, Maryland Environmental Impact Statement

August 2011



BACKGROUND

NSA Bethesda is the home of Walter Reed National Military Medical Center, Bethesda (WRNMMCB), after the 2005 Base Closure and Realignment (BRAC) mandated relocation of the tertiary medical services from Walter Reed Army Medical Center (WRAMC). WRNMMCB is the new name of the former National Naval Medical Center.

WRNMMCB is now the premier Department of Defense (DoD) medical center offering intensive and complex specialty and subspecialty medical services for the most seriously injured personnel from all military services, and serves as the major medical referral center for the DoD.

NSA Bethesda is also the home of the Uniformed Services University of Health Sciences, called the “West Point of Medicine,” which is the institution that provides the nation with health professionals dedicated to career service in the DoD and the United States Public Health Service.



PROPOSED ACTIONS

The Navy is proposing the following actions at NSA Bethesda:

- **Medical Facilities Development**
- **Expansion of Uniformed Services University of the Health Sciences (USUHS)**

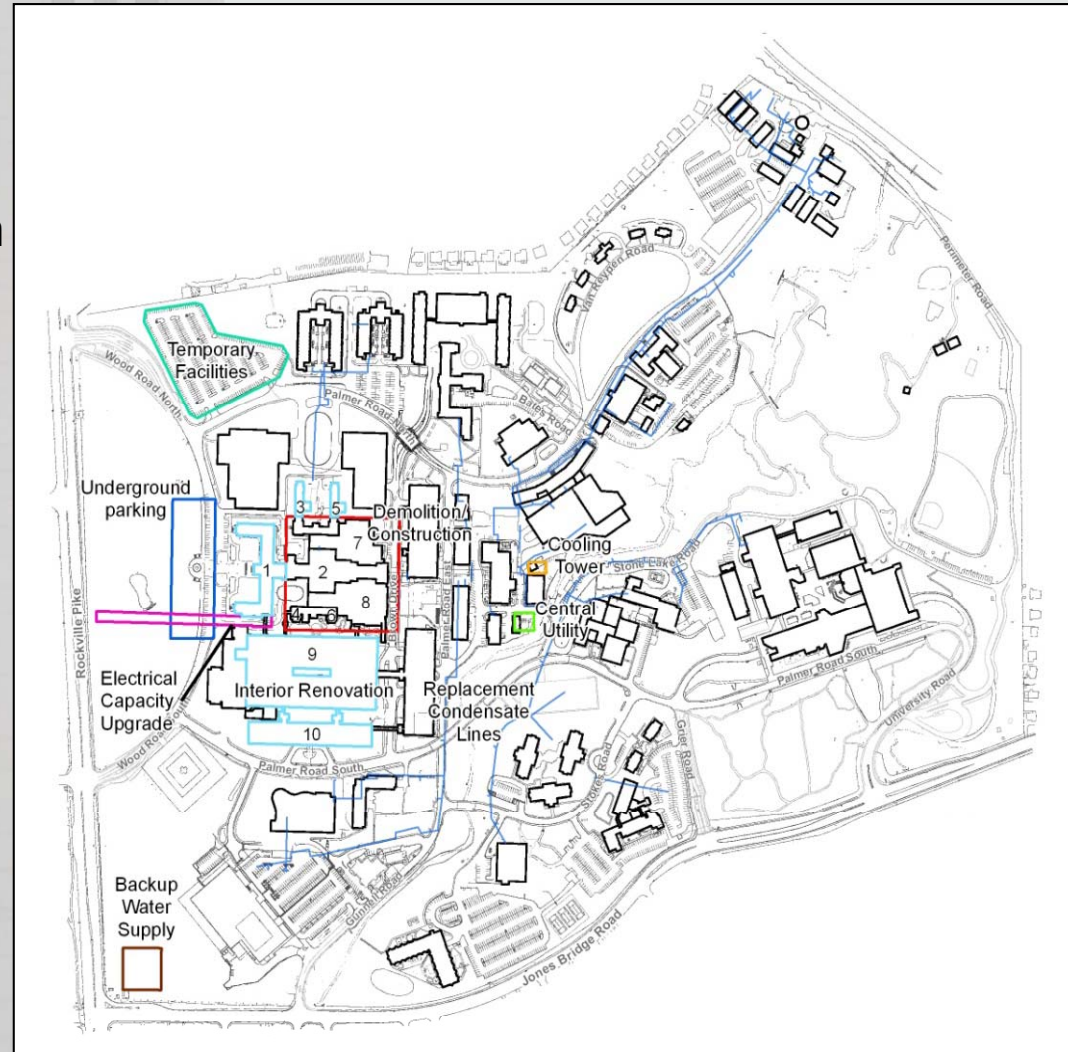
These proposed actions will enhance and support, but **not add to missions and functions** of the installation, medical center or the USUHS.

The potential impacts of the proposed actions on the number of staff, patients, and visitors will be analyzed in the EIS.

The EIS will also include a traffic study, which will be based on the post BRAC conditions.

Proposed Action Medical Facilities Development

- Demolition of Buildings 2, 4, 6, 7, and 8 at the medical center core
- Construction of a 5-story single facility, “Building C,” (approximately 563,000 SF) in the same basic footprint of the demolished area
- Construction of a 500-space underground parking garage
- Utility upgrades to accommodate the new facilities
- Temporary medical facilities in parking Lot G in the northwest corner of the installation – to provide uninterrupted medical care during the construction of Building C
- Interior renovations in Buildings 1, 3, 5, 9, and 10





Purpose and Need

Medical Facilities Development

The purpose of the Medical Facilities Development is to implement the Congressional mandate from the FY2010 National Defense Authorization Act to achieve the new statutory world-class standards for military medicine at the WRNMMCB by providing enduring facilities commensurate in quality, capability and condition as those provided by the BRAC investment.

The Medical Facilities Development is needed because current space is insufficient to meet world class standards such as decompression to single occupancy patient rooms, a state-of-the-art simulation center, and a health innovation center.

The purpose of, and need for, the Medical Facilities Development were identified subsequent to the programming for BRAC 2005, which was specifically designed to accommodate the transfer of WRAMC to WRNMMCB and was never intended to address the mission capability or functionality of the existing infrastructure.

Proposed Action

Uniformed Services University of the Health Services Expansion

- Construction of a new research/education facility, “Building F” (approximately 341,000 SF):
 - Consolidate fragmented on and off installation departments, centers, and activities
 - Provide additional space for student-centered learning, small-group teaching and technological innovation
 - Increase research and education space
- Construction of a 400-space parking structure:
 - Provide parking for USUHS off-site users consolidating to NSA Bethesda
 - Provide additional space to support the overall need for staff parking at the installation





Purpose and Need

Uniformed Services University of the Health Services Expansion

The **purpose** of the USUHS Expansion is to consolidate fragmented infrastructure located on and off NSA Bethesda:

- ***Departments, centers and activities are currently dispersed in 19 inadequate and temporary spaces at NSA Bethesda or off-campus leased space in Rockville, Maryland***

The USUHS Expansion is **needed** to address significant space and operational limitations for research and education activities due to the fragmented, aging, and inefficient infrastructure.

The USUHS Expansion is also **needed** to meet current Liaison Committee on Medical Education accreditation requirements to support WRNMMCB as a world renowned biomedical research, education and patient care facility.

Alternatives to be Considered in the EIS

- **Medical Facilities Development Parking Garage Alternative Sites:**
 - Warehouse area in the northeast corner
 - Taylor Road site in the northeast area
 - H-Lot in the south area
- **USUHS Expansion - Two Alternative Sites:**
 - Alternative 1 located south of the existing USUHS campus
 - Alternative 2 located west of the existing USUHS campus



No Action Alternative – No Action Alternative is required by National Environmental Policy Act (NEPA) and describes the conditions at NSA Bethesda should the proposed actions not occur.



Resources to be Examined in the EIS

The EIS will evaluate potential impacts of the proposed actions to the following resources, with post BRAC conditions as the baseline:

- Geology, Topography, and Soils
- Water Resources
- Biological Resources
- Air Quality
- Noise
- Utilities/ Infrastructure
- Transportation
- Cultural Resources
- Land Use
- Socioeconomics
- Human Health and Safety
- Cumulative Impacts

Studies to be Included in the EIS:

- Traffic Study/ Transportation Management Plan
- Geotechnical study for the underground parking garage
- National Register of Historic Places Determination of Eligibility for the AFRRRI complex



Key Concerns

Traffic Impacts

- Top state/local community concern
- Road intersections in the NSA Bethesda vicinity operate at very high vehicle use rates during typical rush hours due to shared use with downtown Bethesda and the National Institutes of Health (NIH) campus

Historic Preservation (Historic District and Viewshed)

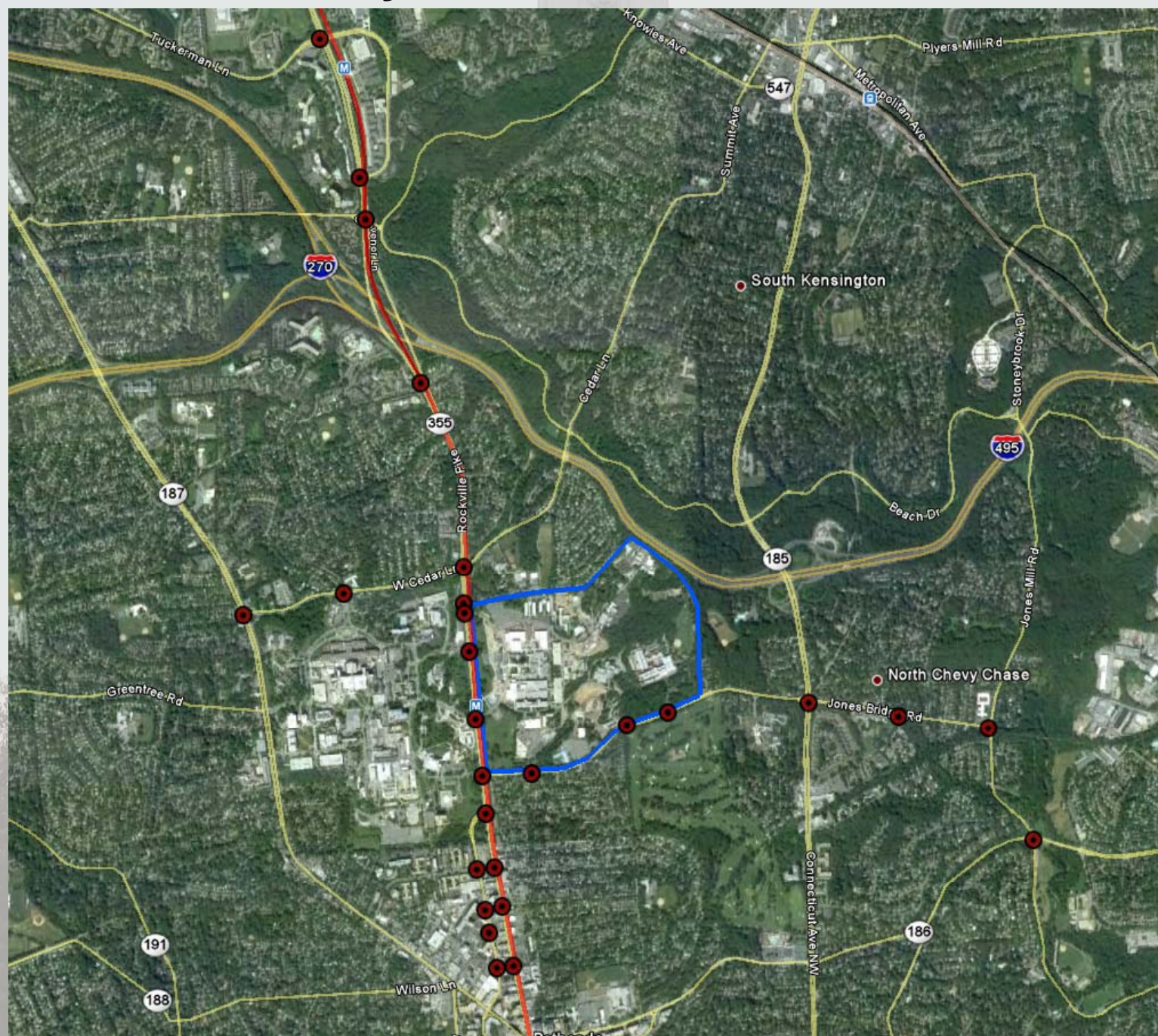
- Tower 1 and immediate road frontage is listed on National Register of Historic Places
- Nationally-recognized historic landmark and setting
- Other facilities from the same period support the Historic District designation

Construction Impacts

- Construction worker parking
- Noise
- Community disruption



Traffic Study Intersections – External



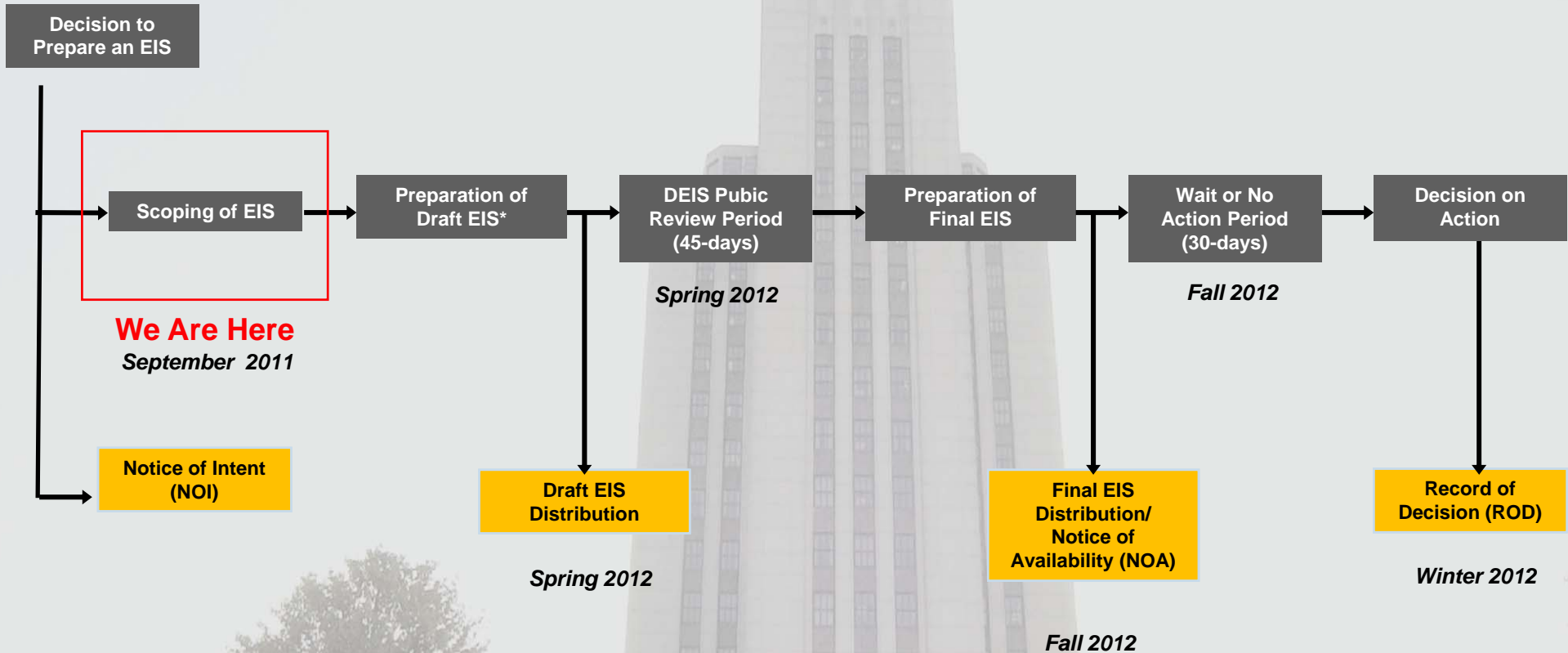


Current Projects and Future Potential Development

- The proposed actions are two components of the 2012 NSA Bethesda Master Plan that the Navy is currently updating and the EIS will analyze the implementation of those components.
- The 2012 NSA Bethesda Master Plan also reflects ongoing projects previously considered under NEPA as well as potential future development opportunities at NSA Bethesda.
 - *The EIS will evaluate the cumulative effects of the proposed actions in the context of the known, ongoing activities and identify the potential programmatic effects of the proposed actions in the context of the potential future development opportunities. Therefore, the EIS will analyze the environmental effects of the 2012 NSA Bethesda Master Plan relative to the implementation of the proposed actions in this EIS.*
 - *For the potential future development opportunities, the Navy will ensure the appropriate NEPA review is completed at such time as the projects are proposed for implementation.*



The EIS Process



* Studies to be included in the EIS:

- Traffic Study/ Transportation Management Plan
- Geotechnical study for the underground parking garage
- National Register of Historic Places Determination of Eligibility for the AFRRRI complex

■ NSA Bethesda EIS Process

■ Public Input to EIS Process



PUBLIC SCOPING MEETINGS

Meeting 1:

Wednesday, 7 September 2011, 5:00 - 9:00 p.m.

Bethesda Marriott,
5151 Pooks Hill Road
Bethesda, MD

Meeting 2:

Monday, 12 September 2011, 1:00 - 5:00 p.m.

Bethesda Marriott,
5151 Pooks Hill Road
Bethesda, MD



NOTICE OF INTENT

- **Federal Register Notice – 19 August**
- **Newspapers – Washington Post, Washington Times, Montgomery County Gazette – Beginning 26 August**
- **Scoping Notification Letters – via U.S. mail**
- **Project Website –**
<http://www.bethesda.med.navy.mil/nsa/eis.aspx>
(NNMC homepage – Site Index – “EIS”)



COMMENTS

By Mail:

Sandy Dean, NSA Bethesda Public Affairs Office

8901 Wisconsin Avenue

Bethesda, Maryland 20889

By E-Mail: NNMC.NSABETHESDAEIS@med.navy.mil

By Telephone: (301) 295-5727

Visit Website:

<http://www.bethesda.med.navy.mil/nsa/eis.aspx>