

DHHS PULSE REPORT

COVID-19 IMPACT AND RECOVERY

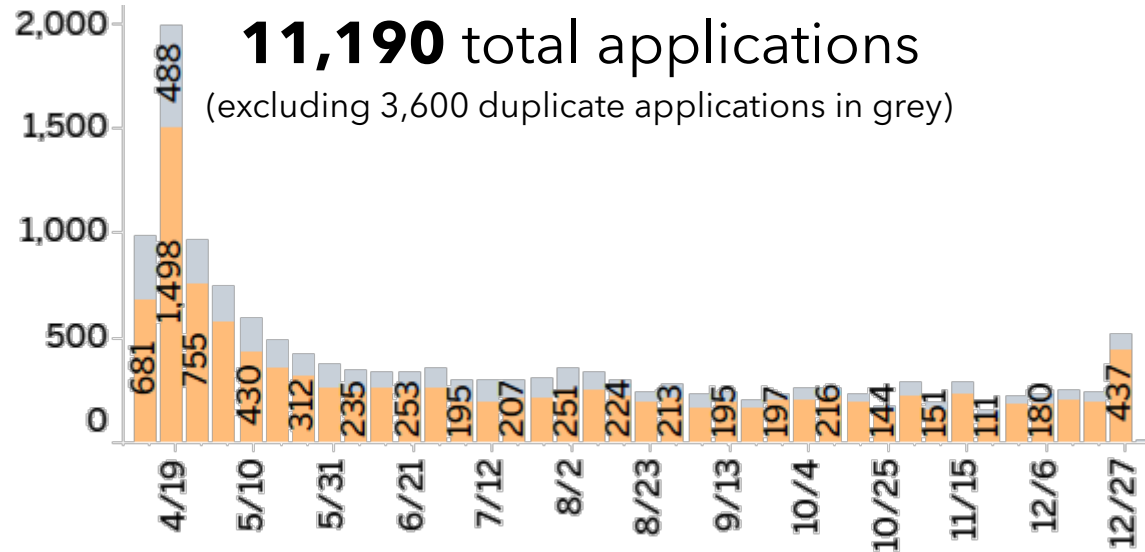
January 19, 2021



RESPONSE: EMERGENCY ASSISTANCE & DEMAND

COVID-19 RENTAL RELIEF UPDATE: WEEK OF JAN 10-16

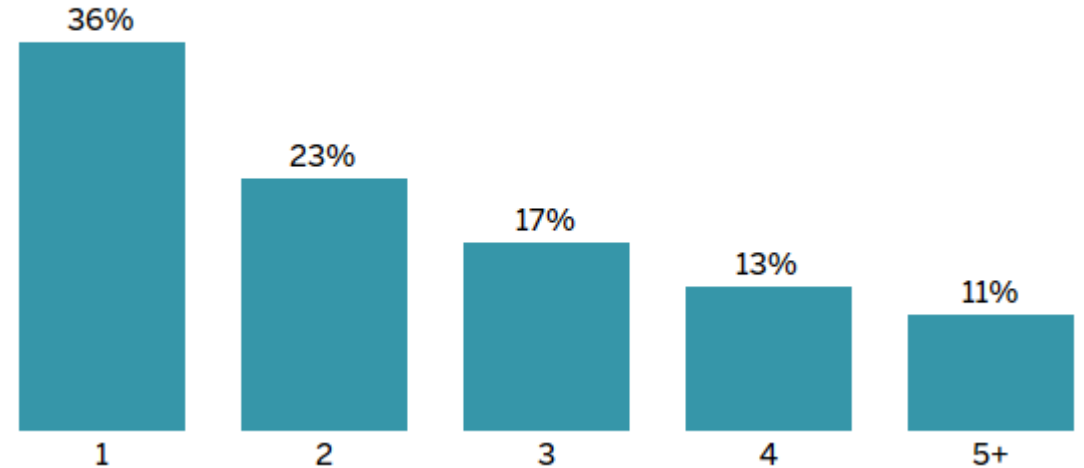
APPLICATIONS BY WEEK (ENDED 12/31)



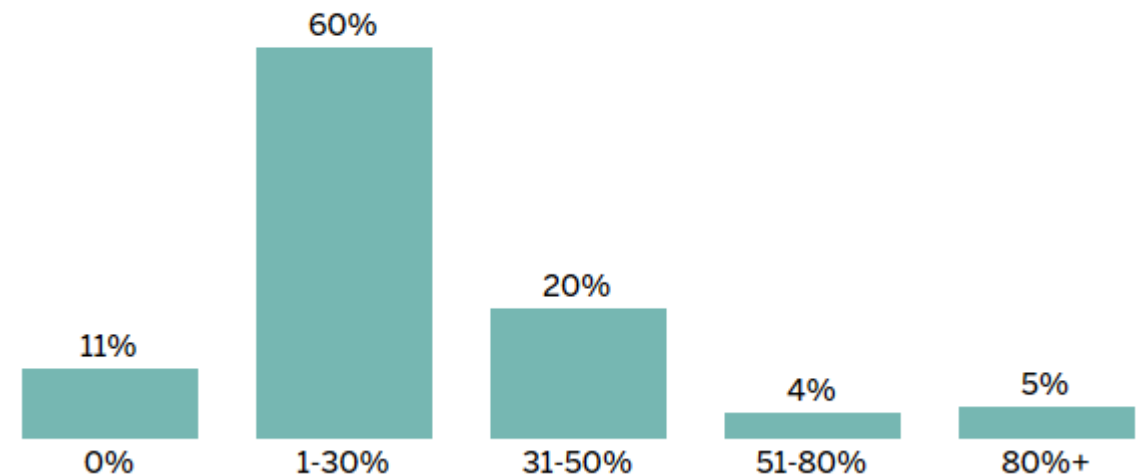
Application portal closed on 12/31/21.

APPLICANT HOUSEHOLD CHARACTERISTICS

Household size



Percent of Area Median Income

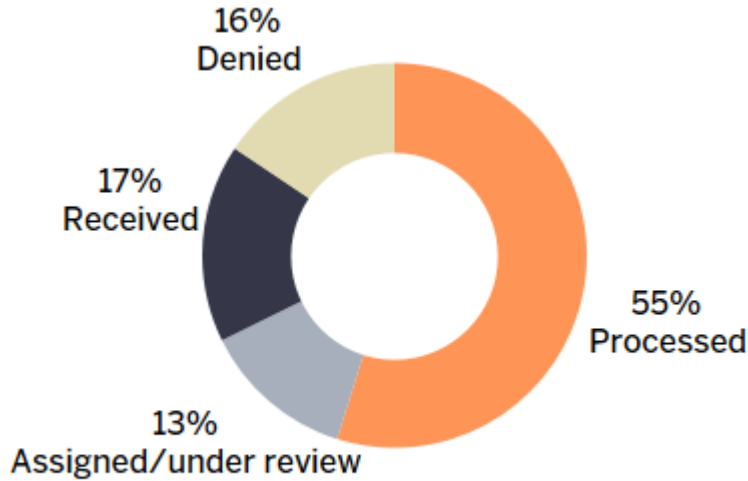


APPLICANT CHARACTERISTICS

- **51%** matched with landlord application
- **53%** unemployed past 90 days
- **29%** needed to care for self/others
- **23%** self-reported receiving an eviction notice
- Median household income: **\$20,926**

COVID-19 RENTAL RELIEF UPDATE: WEEK OF JAN 10-16

APPLICATION PROCESSING



May not add to 100% due to rounding.

Denials are primarily due to applicants not having arrears/mortgage assistance requests, exceeding income requirements, not demonstrating county residency, and include non-responsive and fraudulent requests.

ALL-TIME TOTALS

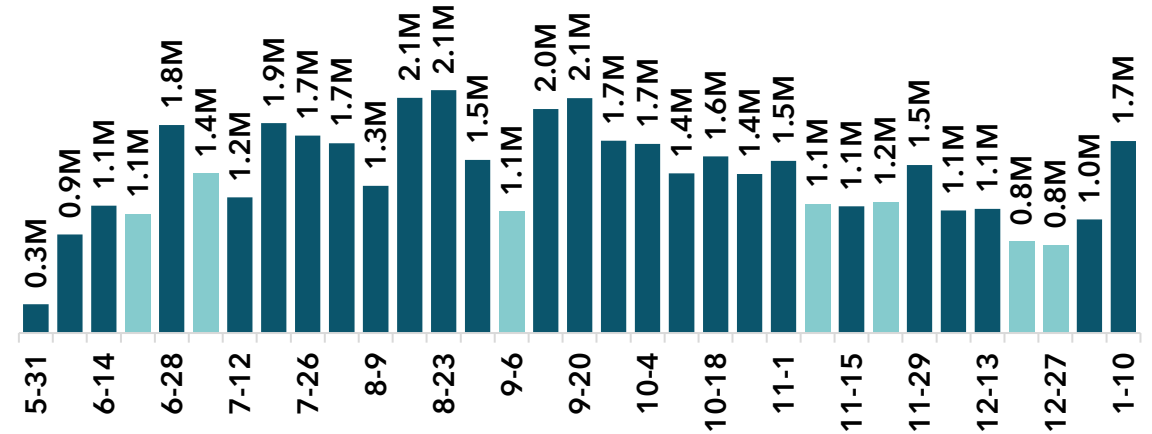
The current round of funding adds to two previous rounds of COVID-19 assistance. In total, the Emergency Rental Assistance Program has approved:

- **\$63.7M** in payments
- **9,010** households

APPROVALS

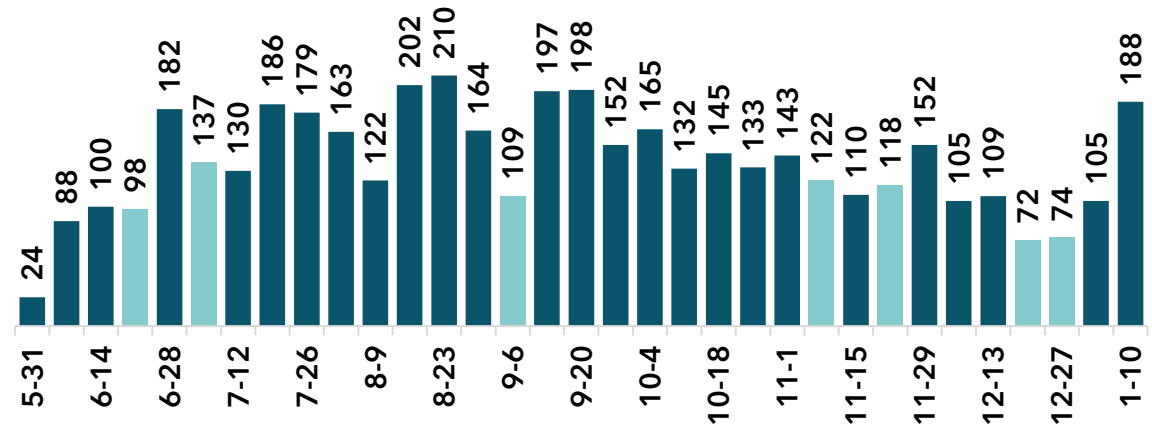
Total Approved Payments: \$45.8M

(4-day workweek in light blue)



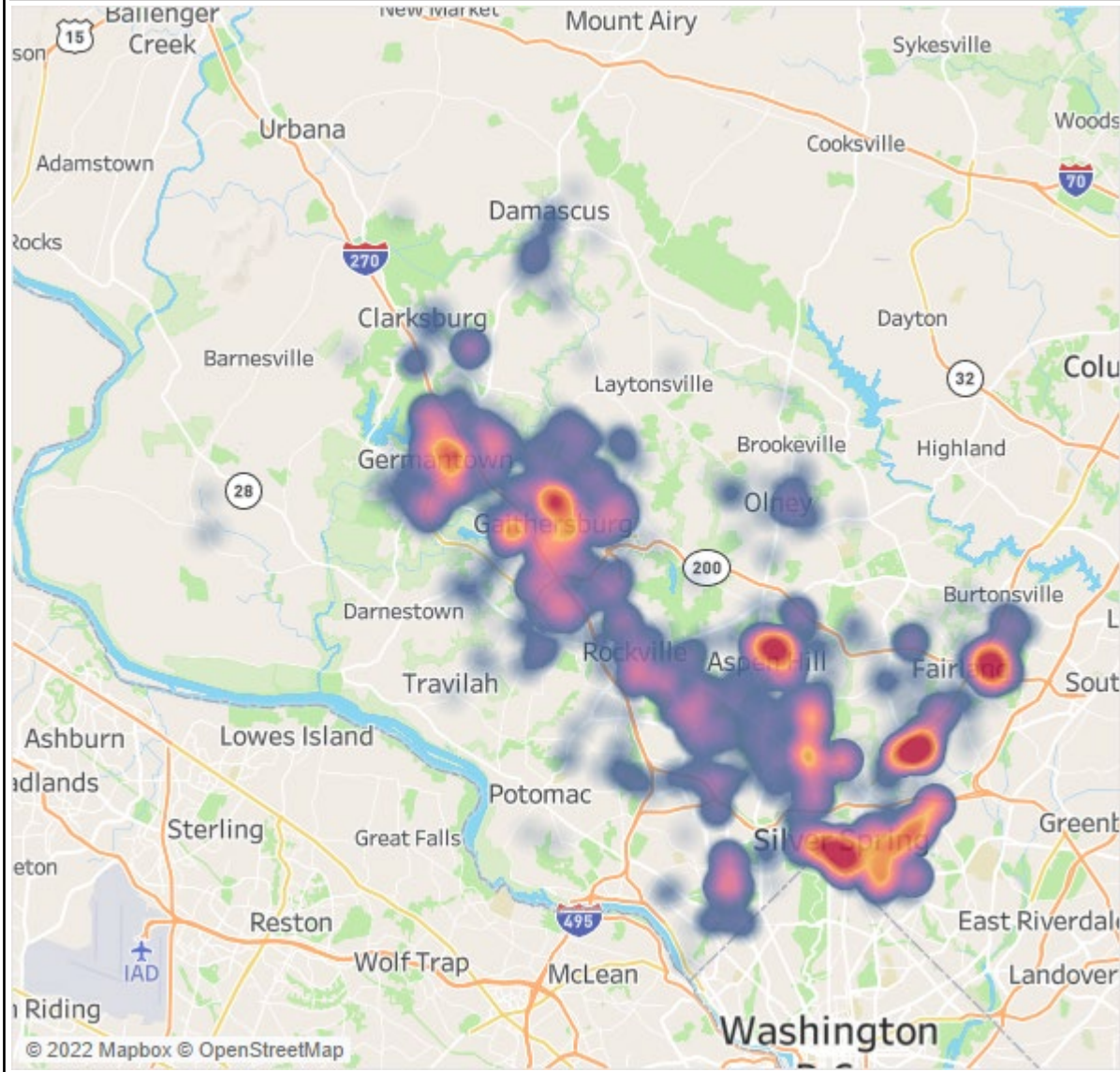
Total Approved Households: 4,514

(4-day workweek in light blue)

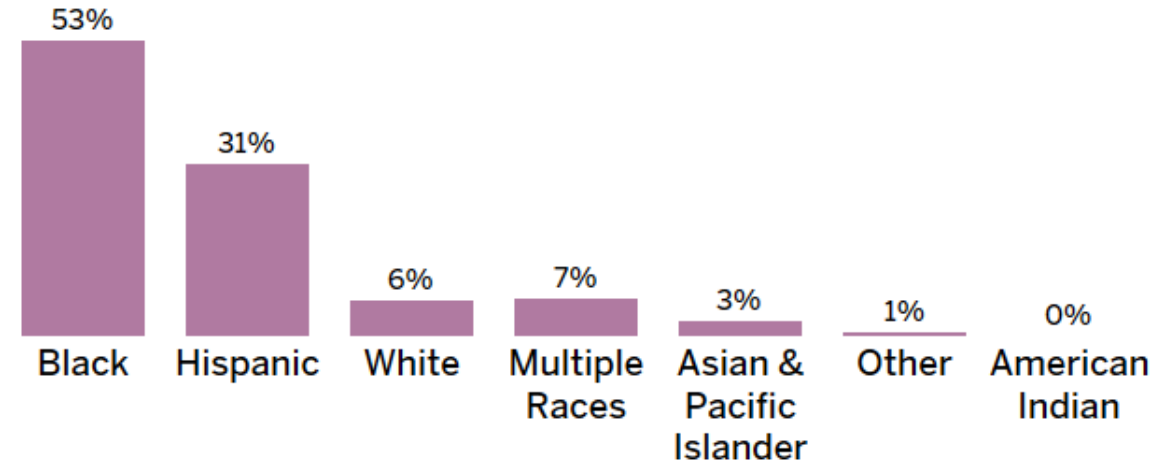


COVID-19 RENTAL RELIEF UPDATE: WEEK OF JAN 10-16

HEATMAP OF RECIPIENT HOUSEHOLDS



RECIPIENT RACE/ETHNICITY



ADDITIONAL RECIPIENT CHARACTERISTICS

- Average client payment: **\$10.2K**
- **64%** of payments arrears; **36%** prospective
- **47%** of awarded households are in high-need areas as defined by the Homeless Prevention Index

COVID-19 RENTAL RELIEF UPDATE: WEEK OF JAN 10-16

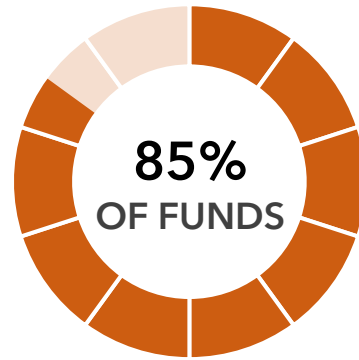
DIRECT ERAP EXPENDITURES

Award

\$31.4M

Current spending and encumbered

\$26.6M



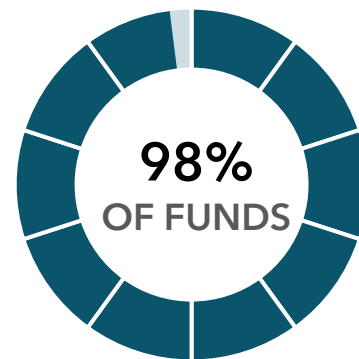
STATE ERAP EXPENDITURES

Award

\$28.1M

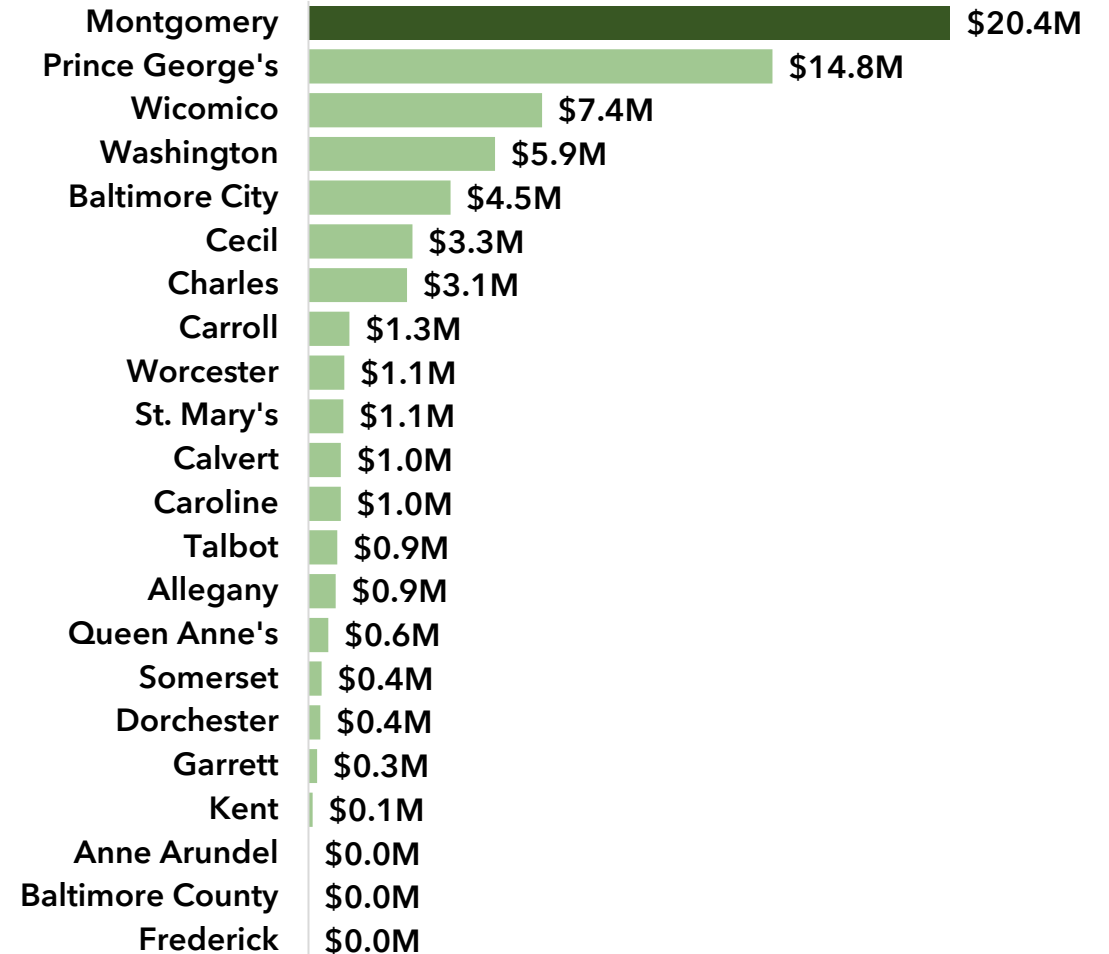
Current spending and encumbered

\$27.7M



STATE EXPENDITURES BY COUNTY

As of 10.31.2021

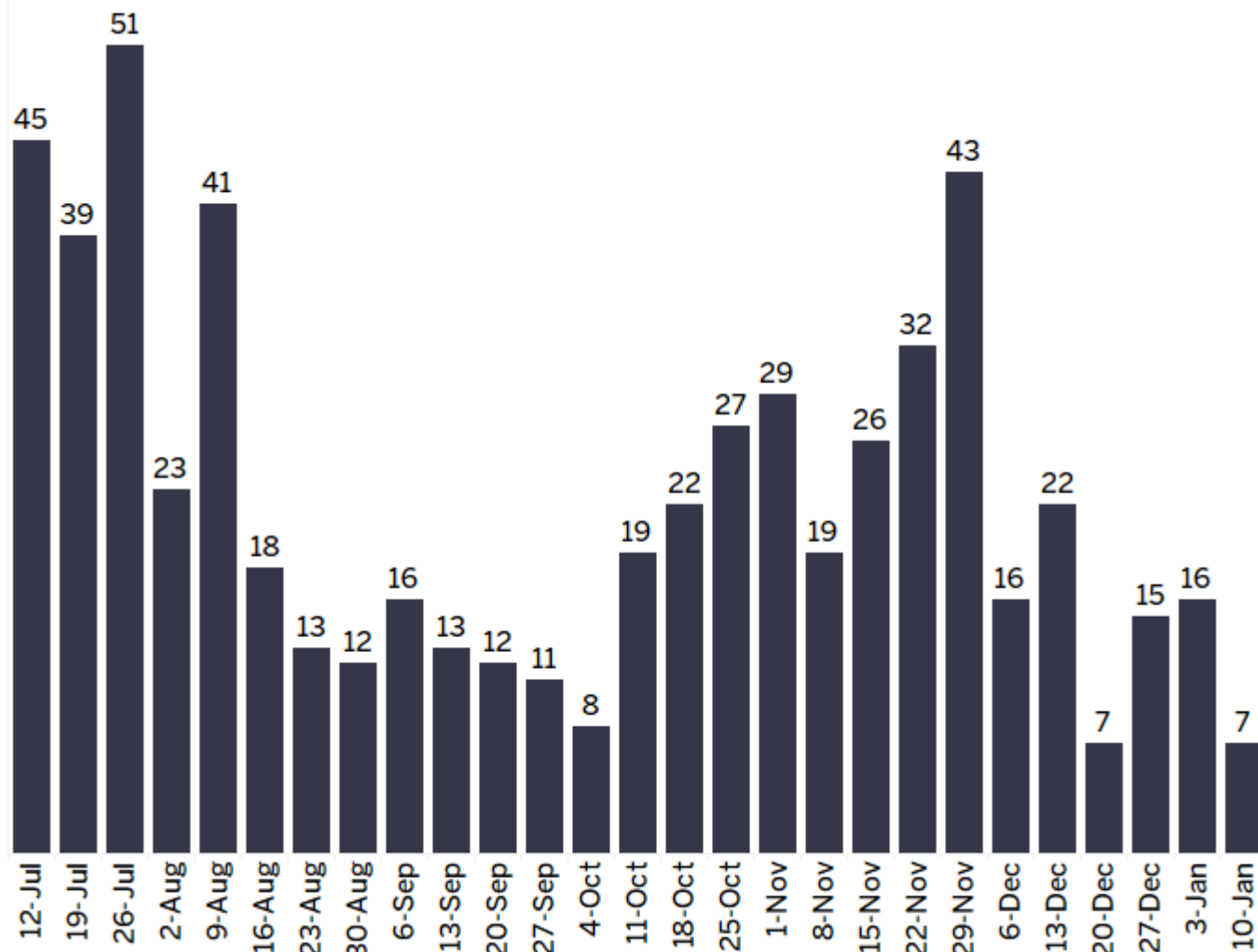


Note: Spending and percentages may shift as payments are reconciled.

Source: Maryland Department of Housing and Community Development, <https://bit.ly/3DQSVZY>

EVICTIION TRACKER

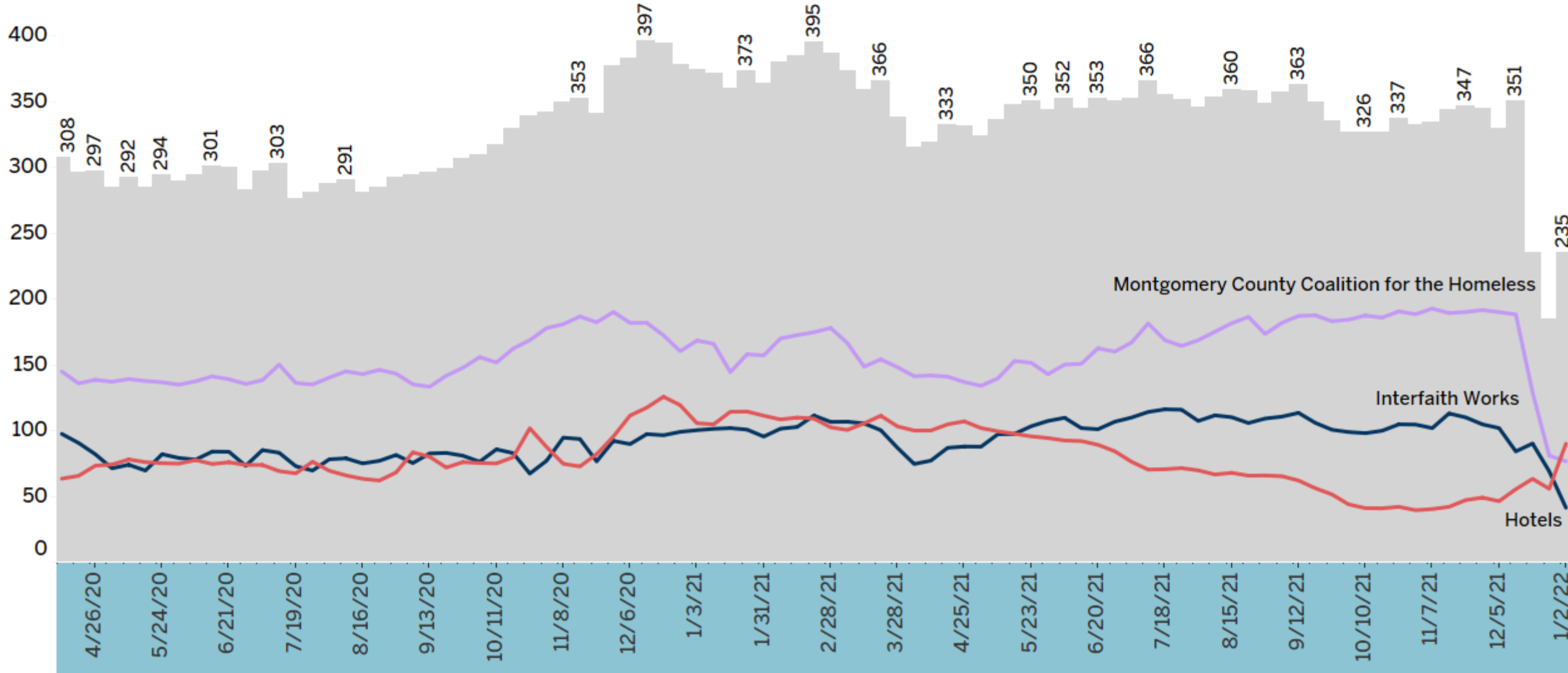
NEW WRITS BY WEEK



- **882** residents scheduled for eviction after July 19
- **46%** of households with writ have applied for emergency rental assistance
- Context: **fewer than 8%** of writs typically result in eviction

NOTE: Records on writs for eviction can include commercial tenants as well as multiple notices for a single household. The stats above attempt to capture unique residential households only, but it is not always possible to make such distinctions.

SHELTER OCCUPANCY

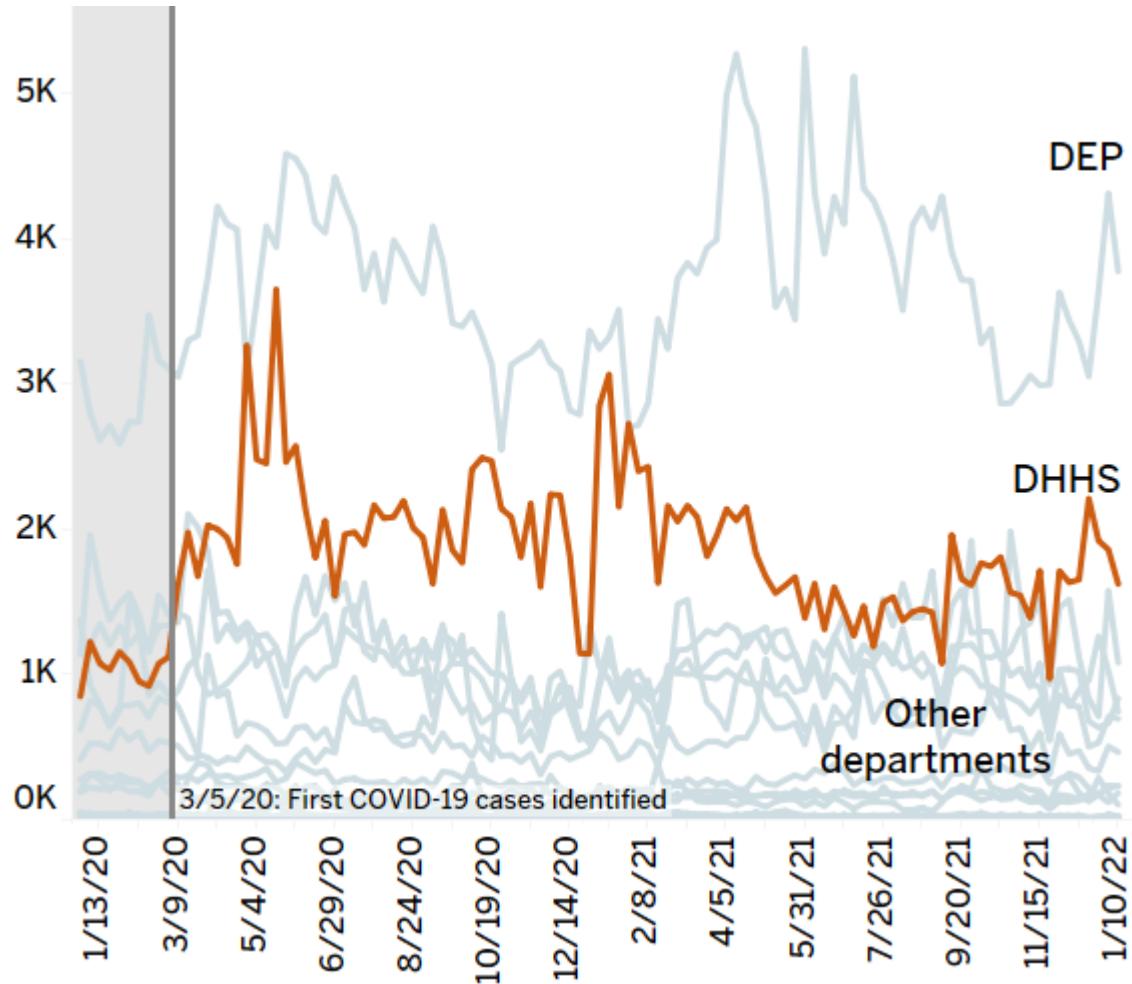


Data are updated weekly with a one-week delay. **NOTE: Total occupancy does not include hotels providing shelter to those who are in quarantine or isolation.**

MC311 WEEKLY CALL VOLUME: DHHS

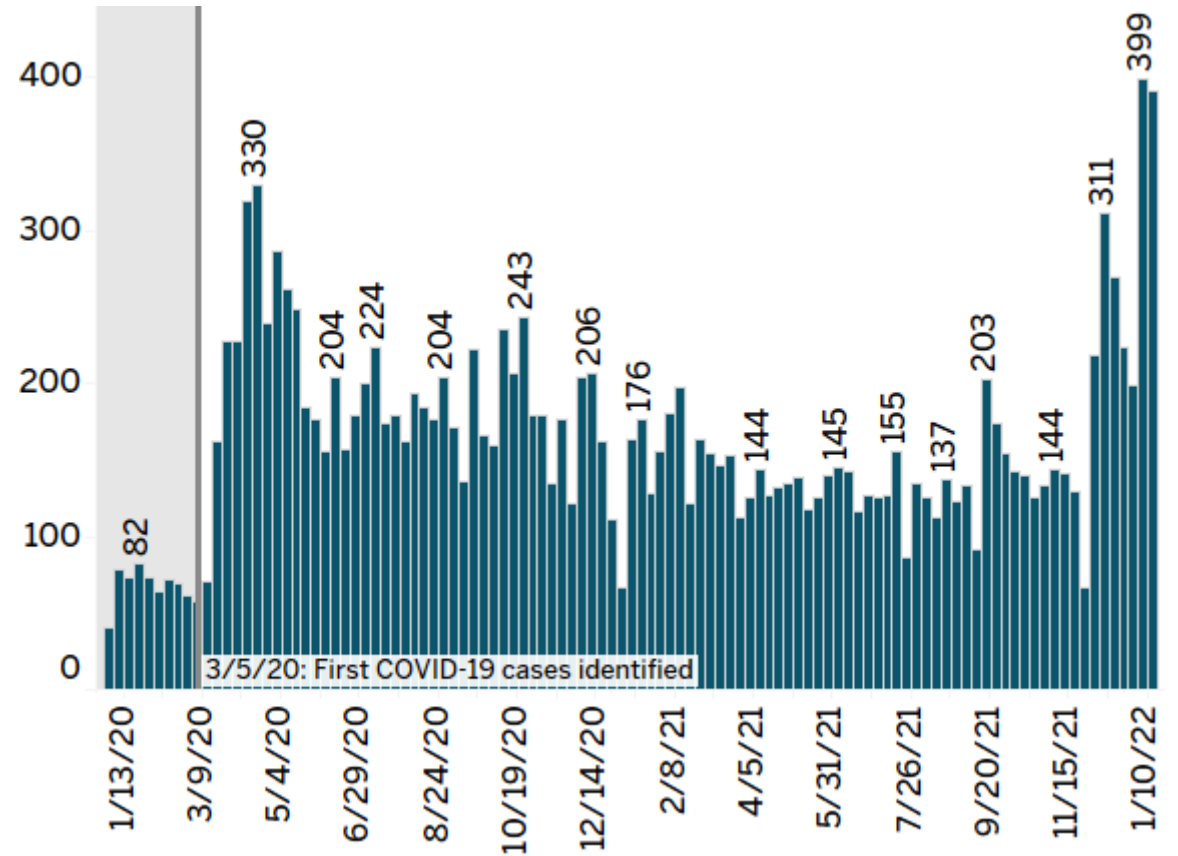
WEEKLY CALLS BY DEPARTMENT

1,624 calls last week for DHHS services



WEEKLY CALLS FOR PUBLIC ASSISTANCE

391 calls last week for public assistance*



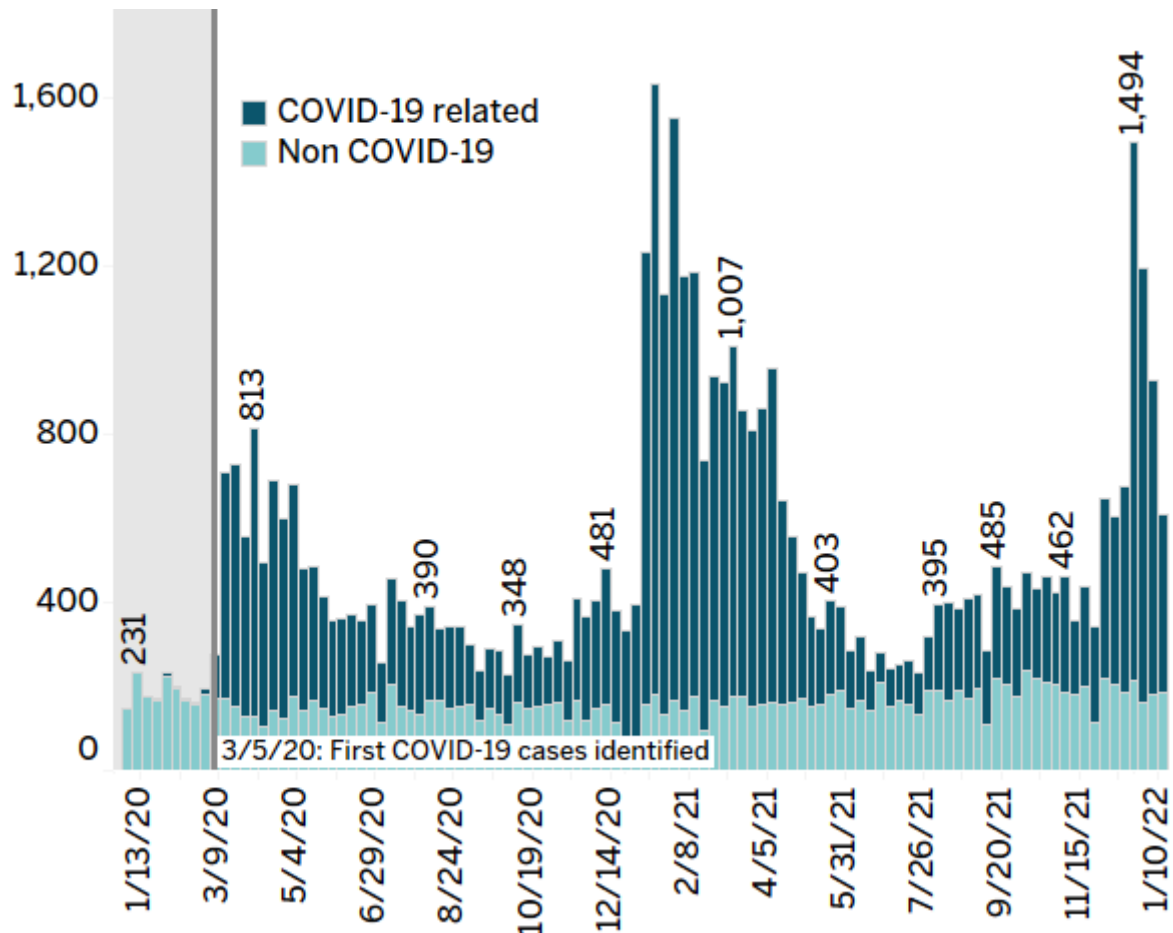
* Due to changes in the referral system, this metric has changed from counting the number of calls asking how to apply for public assistance to the number of calls asking about other aspects of public assistance. Those who want to apply for public assistance are now referred to MD Think and are not necessarily captured in the count displayed above.

MC311 WEEKLY CALL VOLUME: DHHS

PUBLIC HEALTH

611 calls last week for Public Health

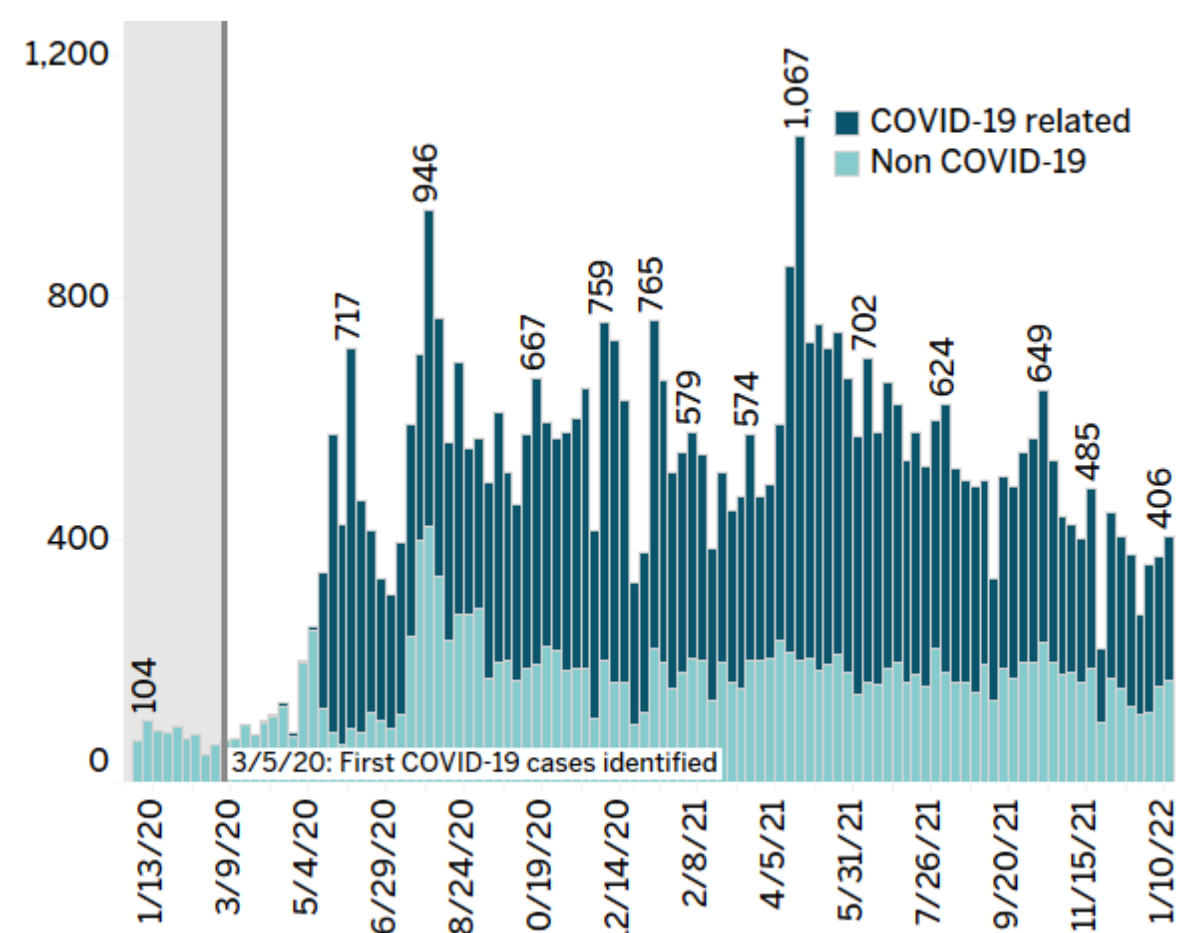
70% related to COVID-19



SERVICES TO END & PREVENT HOMELESSNESS

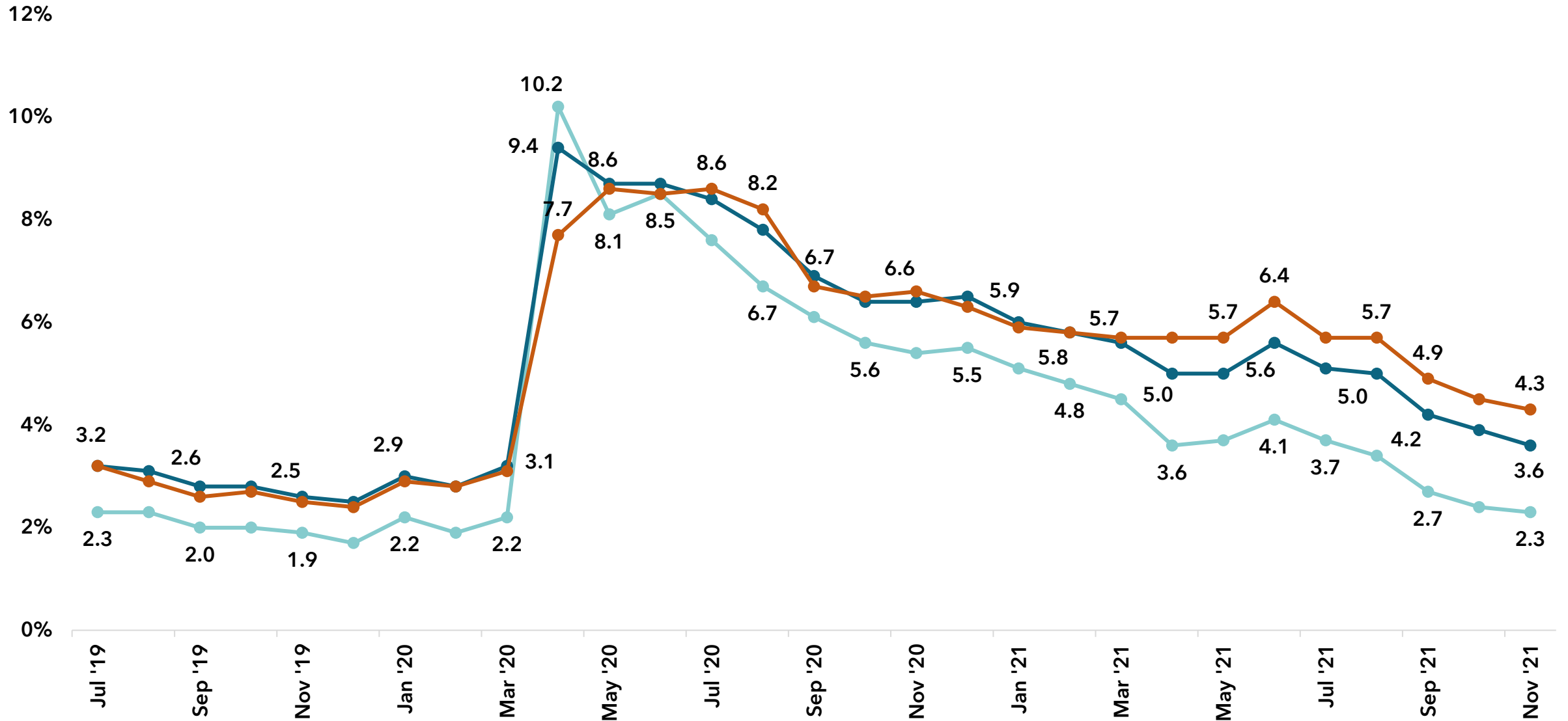
406 calls last week for SEPH

59% related to COVID-19



UNEMPLOYMENT RATES IN THE REGION

Fairfax County DC-Metro Region Montgomery County



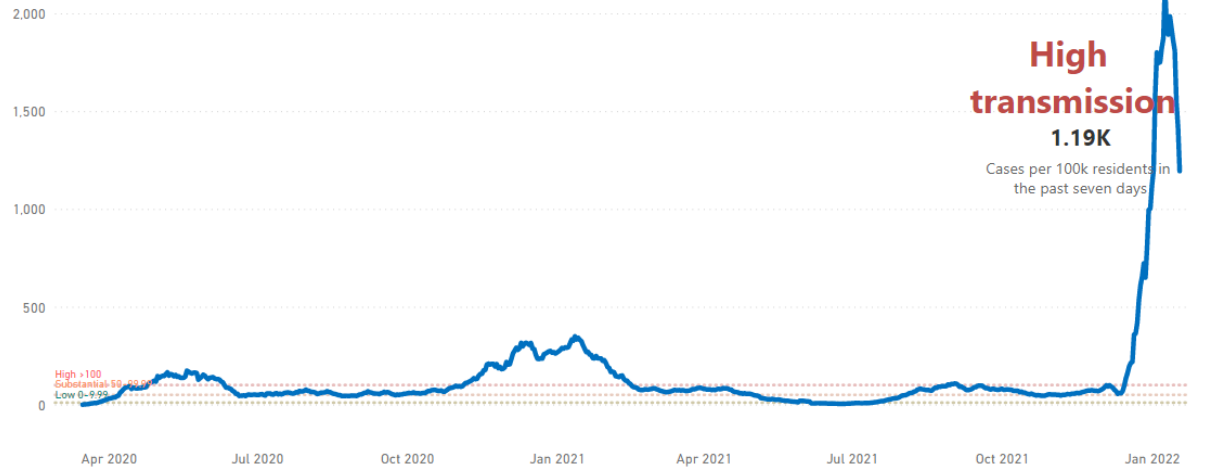
COVID-19 CASES, VACCINATIONS, & TESTING



COVID-19 CASES & HOSPITALIZATIONS

CASES AS OF 1/18/22*

Number of cases per 100,000 persons in the past seven days



COVID-19 HOSPITAL BEDS AS OF 1/18/22

Percentage of hospital inpatient beds in the community that are occupied by patients with COVID-19



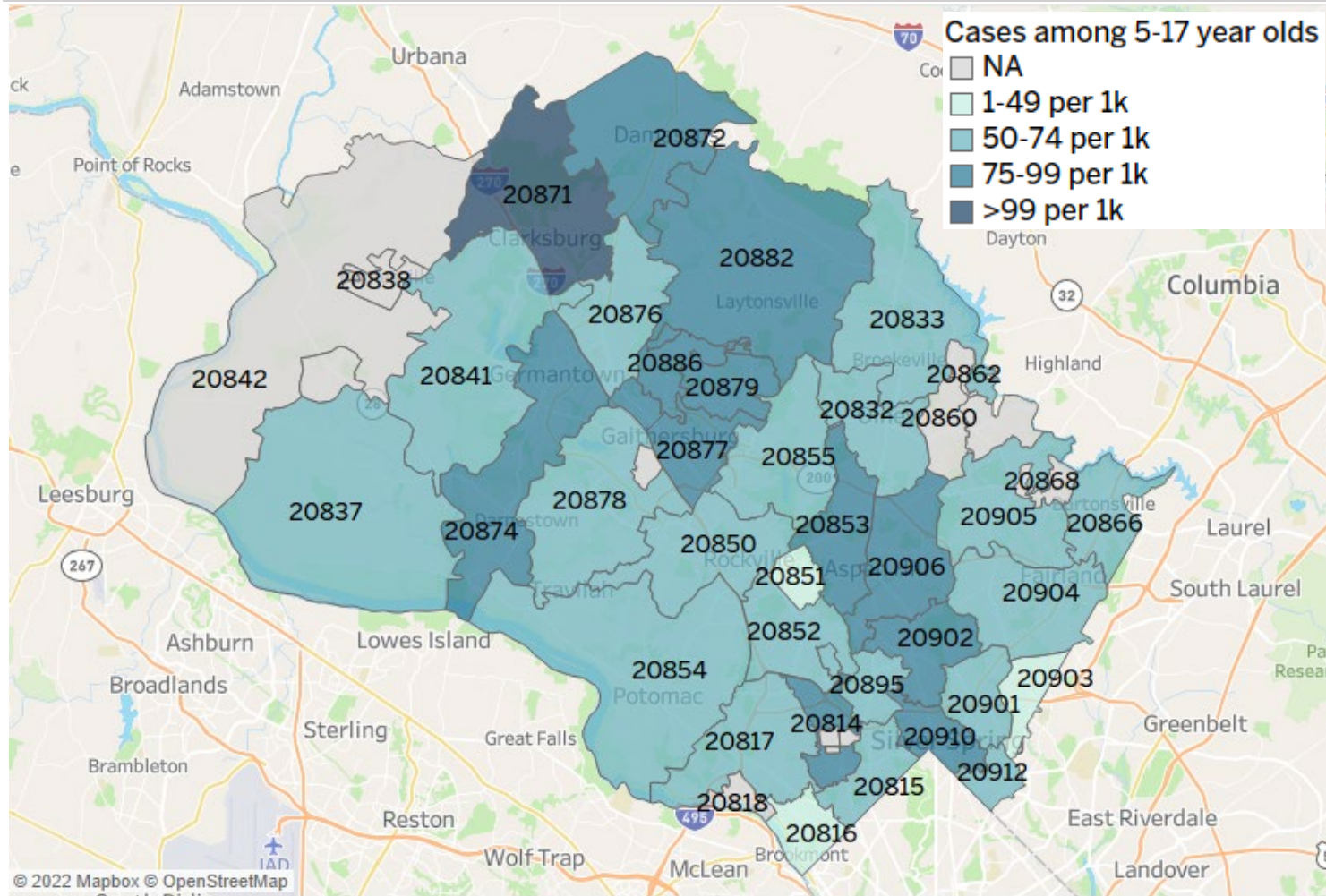
*Cases may be underreported in part due to the growing use of self-test home kits. Montgomery County DHHS collects data on self-reported home test results in a separate database.

NOTE: The MDH security incident disrupted prior reporting on cases and hospitalizations *by vaccination status*. Reporting will resume once access to that database has been restored.

For real-time updates, visit the COVID-19 Surveillance Dashboard: <https://www.montgomerycountymd.gov/covid19/data/>

COVID-19 SCHOOL-AGE CASES: 4-WEEK SNAPSHOT

30-DAY CASE RATE PER 1,000 5-17 YEAR OLDS



Map reads: In zip code 20871, there were more than 99 cases among 5-17 year olds per 1,000 5-17 year olds between 12/20/21 and 1/17/22.

Case rate not calculated for zip codes with fewer than 1,000 5-17 year olds.

BETWEEN DECEMBER 20, 2021 AND JANUARY 17, 2022:

- There were **12,838** confirmed cases among 5-17 year olds
- **48%** of these cases were among 5-11 year-olds and **52%** among 12-17 year-olds
- The zip codes with highest rate of cases among 5-17 year olds (adjusted for that age group's population) are: **20871, 20872, 20886, 20874, and 20902.**

COVID-19 VACCINATIONS: TOTALS FROM CDC

TOTAL VACCINATIONS (AS OF 1/18/22)

- **≥95%*** of total population received at least **ONE DOSE** [N=1,047,858]
- **85%** of total population received at least **TWO DOSES** (fully vaccinated) [N=891,852]
- **46%** of fully vaccinated population received a **BOOSTER/ADDITIONAL DOSE** [N=408,231]

* The CDC caps percentages at 95% to account for margins of error in data entry and population estimates.

NOTE: The CDC vaccination count includes Montgomery County residents who received their shots in Maryland or outside the state. It also includes vaccinations administered in federal entities within Montgomery County.

VACCINATIONS BY AGE GROUP

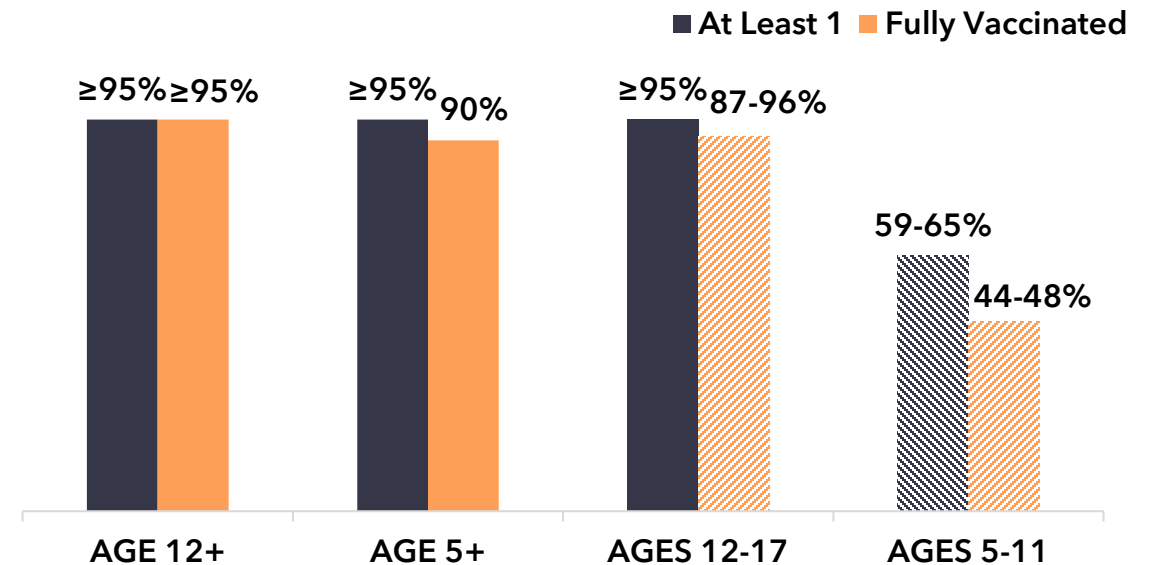
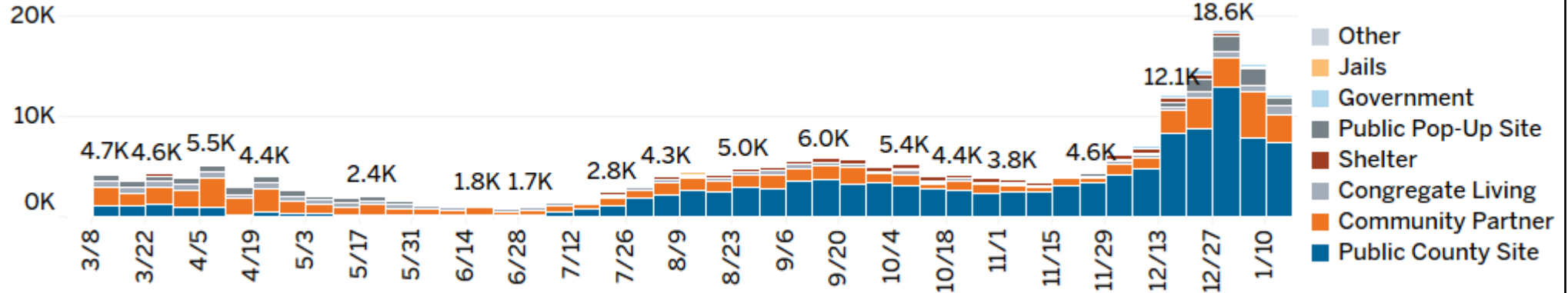
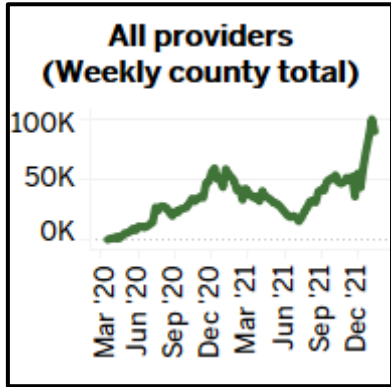


Chart reflects percent of total age group population that received doses. Percentage estimates are reflected as ranges for ages 12-17 and ages 5-11 due to higher margins of error.

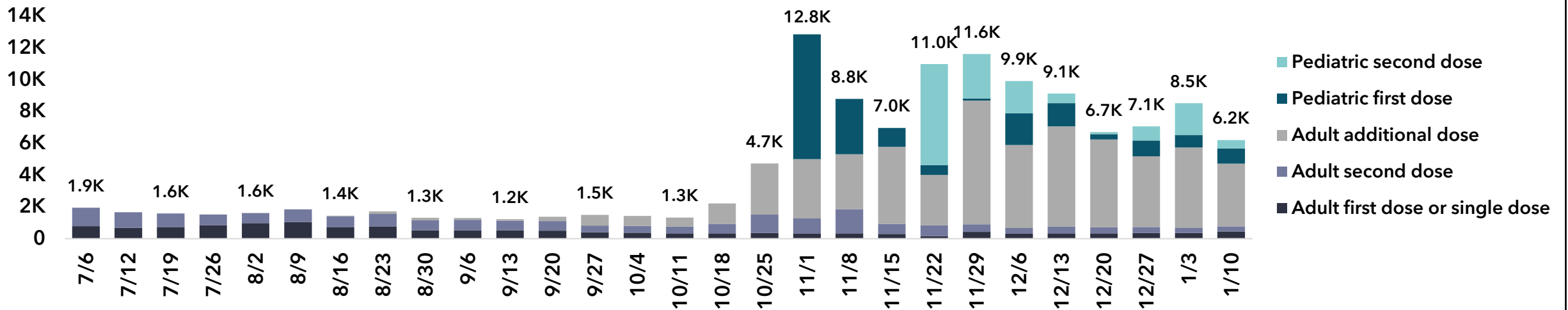
- **51%** of the fully vaccinated 18+ population received a **BOOSTER/ADDITIONAL DOSE** [N=391,294]
- **70%** of the fully vaccinated 65+ population received a **BOOSTER/ADDITIONAL DOSE** [N=118,786]

COUNTY GOVT COORDINATED TESTING & VACCINATIONS

DHHS-ADMINISTERED TESTING: 12,347 TESTS ADMINISTERED LAST WEEK



DHHS-ADMINISTERED VACCINATIONS: 6,187 DOSES ADMINISTERED LAST WEEK



Data are subject to retroactive changes.

DATA SOURCES

This report aggregates data from several sources, some of which are publicly available. Nearly all data are subject to retroactive changes.

- Rental assistance data is generated by DHHS each Sunday prior to the publication of this report.
- Data on evictions are provided by the Montgomery County Sheriff's Office each Monday for the week prior.
- Data on shelter occupancy are collected by DHHS weekly.
- MC311 data are downloaded weekly from [DataMontgomery](#).
- Unemployment data are downloaded monthly from [FRED](#).
- Case data are provided by Maryland Department of Health. Real-time data can be found on the Montgomery County [COVID-19 Surveillance Dashboard](#).
- Vaccine data are downloaded from the [CDC website](#) each Tuesday.
- Data on county government coordinated testing and vaccinations are collected by DHHS daily.