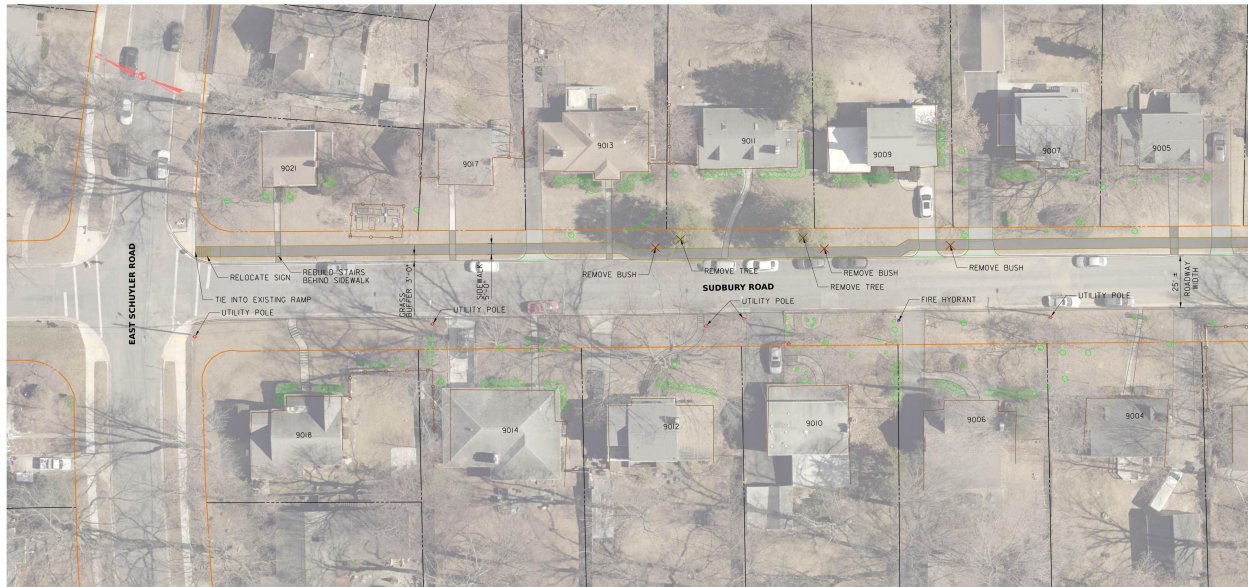


# Long Branch Purple Line Sidewalk Improvements



**Figure 1: Plan view of proposed sidewalk improvements along Sudbury Road at East Schuyler Road. The drawing overlays design elements onto an aerial photograph of a residential neighborhood. It shows property lines, existing houses with labeled addresses, roadway edges, and proposed construction features including a 5-inch concrete sidewalk running along the north side of Sudbury Road, an ADA-compliant ramp at the corner, a detectable warning surface at the curb ramp, approximate right-of-way limits, a retaining wall segment, a new curb, and a concrete driveway connection. Utility poles, a fire hydrant, areas marked for removal of trees and bushes, relocated signage, rebuilt stairs behind the sidewalk, and tie-ins to an existing ramp are also identified.**

## Drawing Labels

- 5 inch concrete sidewalk
- Detectable warning surface
- ADA ramp
- Approximate right of way
- Retaining wall
- New curb
- Concrete driveway
- Relocate sign
- Rebuild stairs behind sidewalk
- Tie into existing ramp
- Utility pole

- Remove tree
- Remove bush
- Fire hydrant

## Revision History

Table 1: Revision history (no revisions recorded)

No.	Rev. (10-2009)	Date	By
—	—	—	—

## Project Details

- **Scale:** 1" = 20'-0"
- **Date:** April, 2020
- **Project No.:** 2009.03
- **Sheet:** 1 of 31

© 2018 FLOVER AVE 1005 WALDEN ROAD 2005 2006 2007 2008 2009 2010 2011 2012 2013 2014 2015  
2016 2017 2018 2019 2020 2021 2022 2023 2024 2025 2026 2027 2028 2029 2030 2031 2032 2033 2034 2035  
2036 2037 2038 2039 2040 2041 2042 2043 2044 2045 2046 2047 2048 2049 2050 2051 2052 2053 2054 2055  
2056 2057 2058 2059 2060 2061 2062 2063 2064 2065 2066 2067 2068 2069 2070 2071 2072 2073 2074 2075  
2076 2077 2078 2079 2080 2081 2082 2083 2084 2085 2086 2087 2088 2089 2090 2091 2092 2093 2094 2095  
2096 2097 2098 2099 2100 2101 2102 2103 2104 2105 2106 2107 2108 2109 2110 2111 2112 2113 2114 2115  
2116 2117 2118 2119 2120 2121 2122 2123 2124 2125 2126 2127 2128 2129 2130 2131 2132 2133 2134 2135  
2136 2137 2138 2139 2140 2141 2142 2143 2144 2145 2146 2147 2148 2149 2150 2151 2152 2153 2154 2155  
2156 2157 2158 2159 2160 2161 2162 2163 2164 2165 2166 2167 2168 2169 2170 2171 2172 2173 2174 2175  
2176 2177 2178 2179

# Long Branch Purple Line Sidewalk Improvements

# Long Branch Purple Line Sidewalk Improvements

## Legend

- 5-inch concrete sidewalk
- Detectable warning surface
- ADA ramp
- Approximate right-of-way
- Retaining wall
- New curb
- Concrete driveway

Scale markers: 8, 10, 20, 32

Scale: 1 inch = 10 feet

## Project Information

Mercado Consultants, Inc.

**Table 1: Revision History**

No.	Rev.	01-00	Date	By
—	—	—	—	—

Location: Long Branch

Project: Purple Line – Sidewalk Improvements

Scale: 1 inch = 20 feet

Date: April, 2026

Project No.: 2009.03



**Figure 2: Aerial-based engineering plan depicting proposed sidewalk and curb improvements along Plymouth Street in Long Branch, including ADA ramps, detectable warning surfaces, driveway connections, retaining walls, utility relocations, and right-of-way limits overlaid on residential parcels.**

# Long Branch

## Purple Line

### Sidewalk Improvements

#### Legend

- 1-1421 Concrete Sidewalk
- 1-1422 Concrete Sidewalk (Remove and Replace)
- 1-1423 Pavement
- 1-1424 Concrete Sidewalk (Remove and Replace)
- 1-1425 Pavement Network
- 1-1426 Pavement
- 1-1427 Concrete Driveway

**Table 1: Project Information**

Company [scope="col"]	Status [scope="col"]	Project No. [scope="col"]	Client [scope="col"]	Notes [scope="col"]
Mercado Executive, Inc.	S/N	001-12-004	SAMS	N/A

16 - 27 07

**Scale (Detail):** 1" = 22'



**Figure 3: Aerial-based site plan of Plymouth Street and Walden Road depicting proposed sidewalk improvements, including concrete sidewalk segments, driveway connections, removal of trees and bushes, reconstructed stairs behind sidewalk, relocated sign, grass strip between curb and sidewalk, property boundaries, and adjacent residential parcels. Green dashed lines indicate vegetation or removal areas; orange lines outline project limits; annotations identify specific construction actions such as “Rebuild Stairs Behind Sidewalk,” “Remove Tree 42” Dia.,” and “Tie into Existing Ramp.”**

Scale: 1" = 20'-0"

Date: April 2020

Prospect Rev.: 2009.03

Sheet: 5 of 31

Match Line – See Sheet 7



**Figure 4: Aerial plan view of Plymouth Street and Bradford Road intersection showing proposed 5-inch concrete sidewalks, ADA ramps at corners, detectable warning surfaces, new curbs, tree and hedge removals, utility poles, retaining wall segments, and approximate right-of-way limits across adjacent residential parcels.**


### Legend

- 5 inch concrete sidewalk
- Detectable warning surface
- ADA ramp
- Approx. right of way
- Retaining wall
- New curb
- Concrete driveway

LEGEND

	5 INCH CONCRETE SIDEWALK
	DETECTABLE WARNING SURFACE
	ADA RAMP
	APPROX. RIGHT OF WAY
	RETAINING WALL
	NEW CURB
	CONCRETE DRIVE WAY



				REV.	REVISION	DATE	BY
<p style="text-align: center;">LONG BRANCH PURPLE LINE SIDEWALK IMPROVEMENTS</p>				SCALE : 1" = 20'-0" DATE : APRIL, 2026 Project No. : 2909.03 SHEET 6 of 31			

**Figure 5: Title block and legend panel for the Long Branch Purple Line Sidewalk Improvements plan set, including graphical legend symbols, scale bar (1 inch = 20 feet), project number 2909.03, date April 2026, and sheet identification 6 of 31.**

## Long Branch Purple Line Sidewalk Improvements

Scale: 1 inch = 20 feet  
Date: April 2026

Project No.: 2909.03  
Sheet 6 of 31

# Long Branch Purple Line Sidewalk Improvements

## Legend

- 5-inch concrete sidewalk
- Detectable warning surface
- ADA ramp
- Approximate right of way
- Retaining wall
- New curb
- Concrete driveway

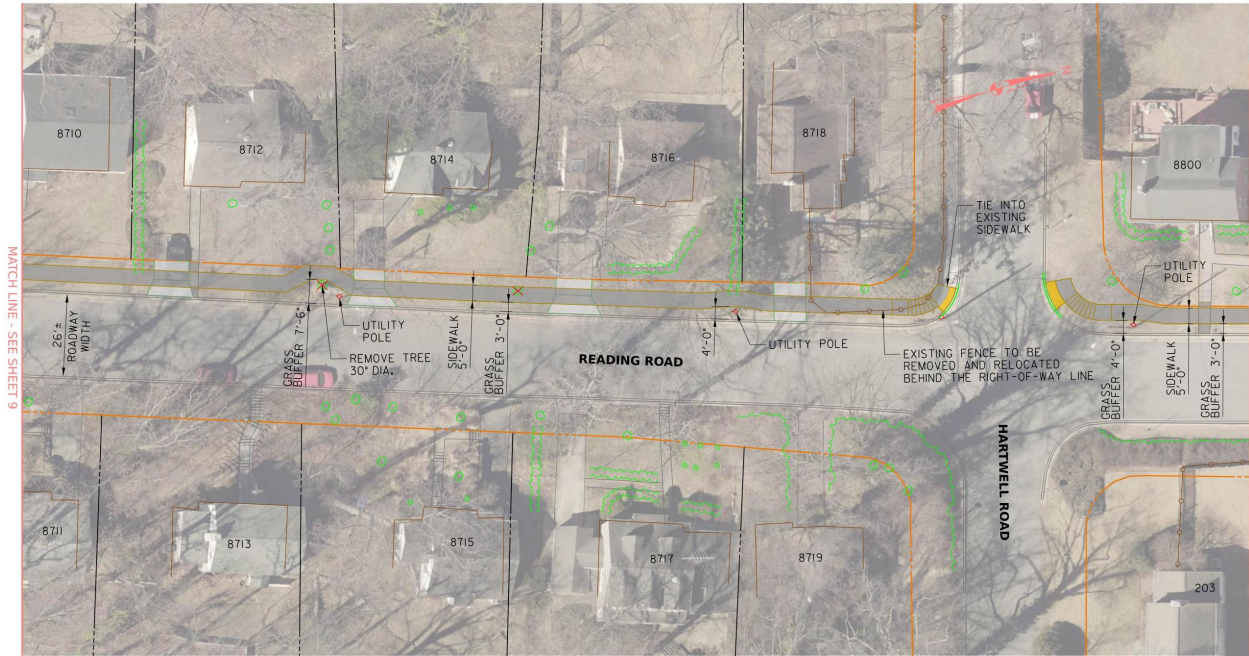
**Plan Scale:** 1" = 20'

## Project Information

- **Project Name:** Long Branch Purple Line Sidewalk Improvements
- **Project Number:** 2909.03
- **Part:** 7 of 31
- **Date:** April 2026
- **Prepared By:** Mercado Consultants, Inc.

**Professional Seal:** Engineering seal for Mercado Consultants, Inc., dated April 2026.

# Long Branch Purple Line Sidewalk Improvements



**Figure 6: Engineering site plan illustrating proposed sidewalk improvements along Reading Road and Hartwell Road, including ADA-compliant curb ramps with detectable warning surfaces at corners, a 5-inch concrete sidewalk corridor with 3-foot grass buffers, new curb segments, driveway transitions, retaining wall locations, utility pole adjustments, right-of-way boundaries, and connection to existing sidewalk infrastructure. Sheet 8 of 31, dated April 2020.**

## Legend

- 5 inch concrete sidewalk
- Detectable warning surface
- ADA ramp
- Approximate right-of-way
- Retaining wall
- New curb
- Concrete driveway

Scale markers: 15 ft, 20 ft, 30 ft.

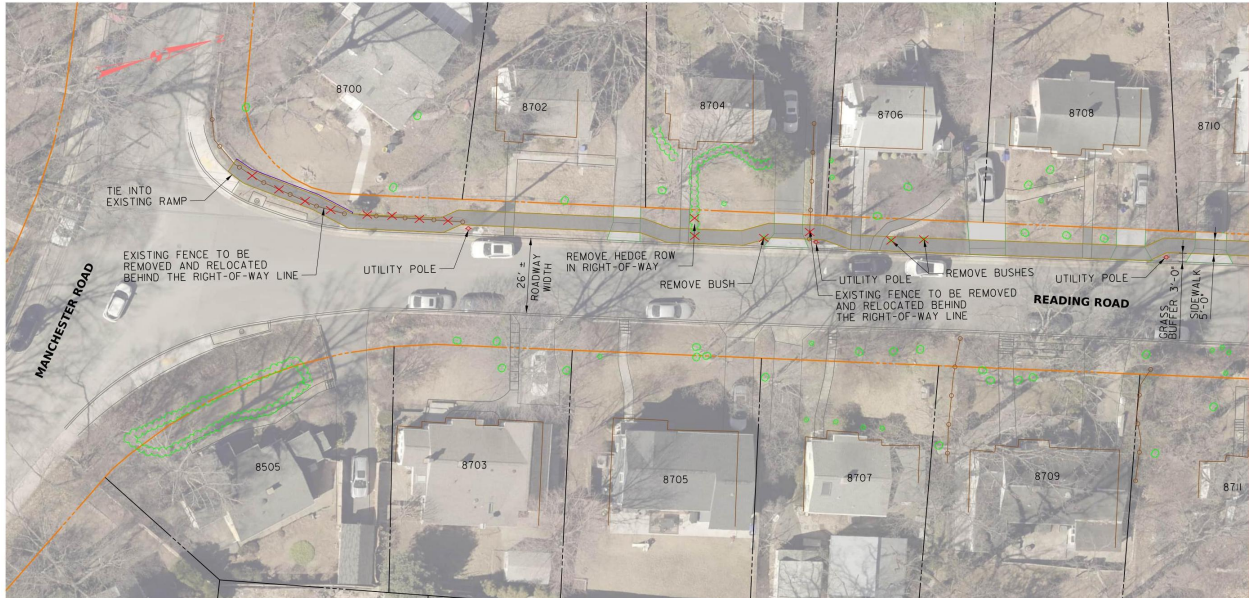
Drawing scale: 1 inch = 20 feet.

Date: April 2020

Project No.: 2009.03

Sheet: 8 of 31

# Long Branch Purple Line Sidewalk Improvements



**Figure 7: Aerial engineering plan illustrating proposed sidewalk improvements along Manchester Road and Reading Road. The drawing shows residential properties labeled with house numbers (e.g., 8700–8711 and 8505–8709), existing roadway width (26 feet), proposed 5-foot concrete sidewalk alignment, ADA ramp tie-ins, detectable warning surfaces, right-of-way boundaries, retaining wall segments, relocated fencing, utility poles, hedge and bush removals, and grass buffer areas. Orange lines indicate right-of-way limits and sidewalk alignment; green markings indicate vegetation; red “X” symbols mark removals; and annotations identify features such as “Remove Hedge Row in Right-of-Way,” “Existing Fence to Be Removed and Relocated Behind the Right-of-Way Line,” and “Tie Into Existing Ramp.” Scale references indicate 1 inch equals 20 feet.**

## Legend

- 5 inch concrete sidewalk
- Detectable warning surface
- ADA ramp
- Approximate right-of-way
- Retaining wall
- New curb
- Concrete driveway

**Scale:** 1 inch = 20 feet

**Consultant:** Mercado Consultants, Inc.

**Project No.:** 2009.03

**Date:** April 2020

# Long Branch Purple Line Sidewalk Improvements

## Legend

- 6 inch concrete sidewalk
- Detectable warning surface
- ADA ramp
- Approximate right-of-way
- Retaining wall
- New curb
- Concrete driveway

Drawing scale: 1 inch equals 20 feet (1" = 20'-0").

## Mercado Consultants, Inc.

Drawing Number: 001-01-000

Project Number: 2404.03

Date: April 2026

Part: 10 of 31

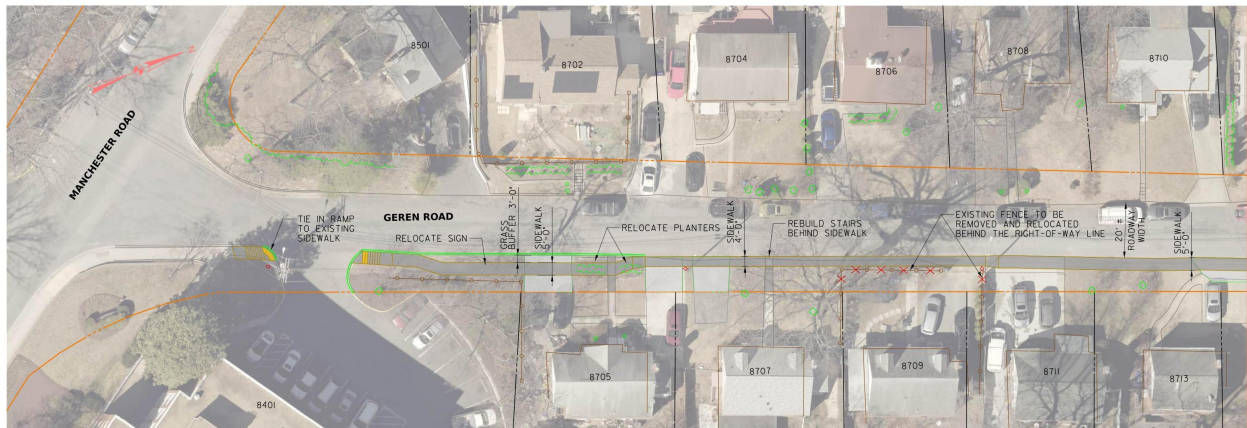


Figure 8: Plan view of proposed sidewalk improvements along Geren Road at Manchester Road intersection. The drawing overlays construction elements on aerial imagery, identifying a 6-inch concrete sidewalk corridor, ADA-compliant ramps tying into existing sidewalks, detectable warning surfaces at curb ramps, grass buffer (3'-0'') and sidewalk widths (5'-0''), relocated planters and sign, rebuilt stairs behind the sidewalk, existing fence to be removed and relocated behind the right-of-way line, new curb segments, retaining wall areas, and driveway connections serving adjacent residential properties (addresses 8702–8713). Orientation arrow and right-of-way boundary are shown.

# LONG BRANCH PURPLE LINE – SIDEWALK IMPROVEMENTS

## LEGEND

- 5 INCH CONCRETE SIDEWALK
- DETECTABLE WARNING SURFACE
- ADA RAMP
- APPROXIMATE RIGHT OF WAY
- RETAINING WALL
- NEW CURB
- CONCRETE DRIVEWAY

Scale bar indicating 0, 20, and 50 feet.  
Scale: 1 inch = 20 feet.

## Consultant

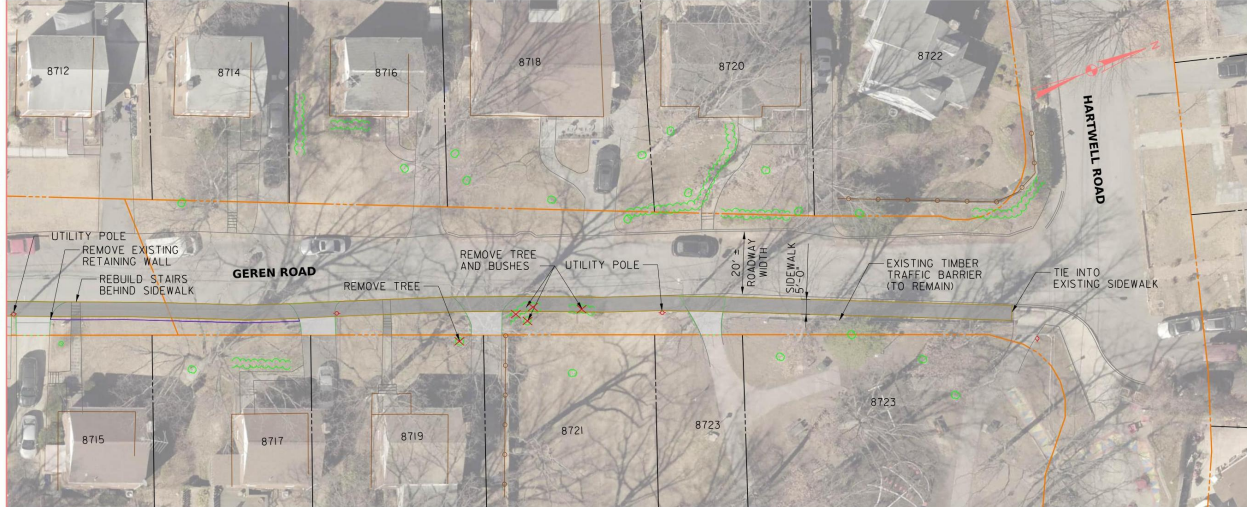
Mercado Consultants, Inc.

## Revision History

Table 1: Revision History

NO.	REV. 01/11/98	DATE	BY
(Reserved)			
(Reserved)			
(Reserved)			
(Reserved)			
(Reserved)			

Scale: 1 inch = 20 feet  
Date: April 2026  
Project No.: 2909.03  
Revised: May 11, 2026



**Figure 9: Aerial engineering plan of Long Branch Purple Line sidewalk improvements along Geren Road, showing property parcels, proposed 5-inch concrete sidewalk alignment, ADA ramp, detectable warning surfaces, retaining wall work, new curb, driveway interfaces, utility poles, tree removals, traffic barrier (to remain), and tie-in to existing sidewalk at Hartwell Road.**

# Long Branch Purple Line Sidewalk Improvements

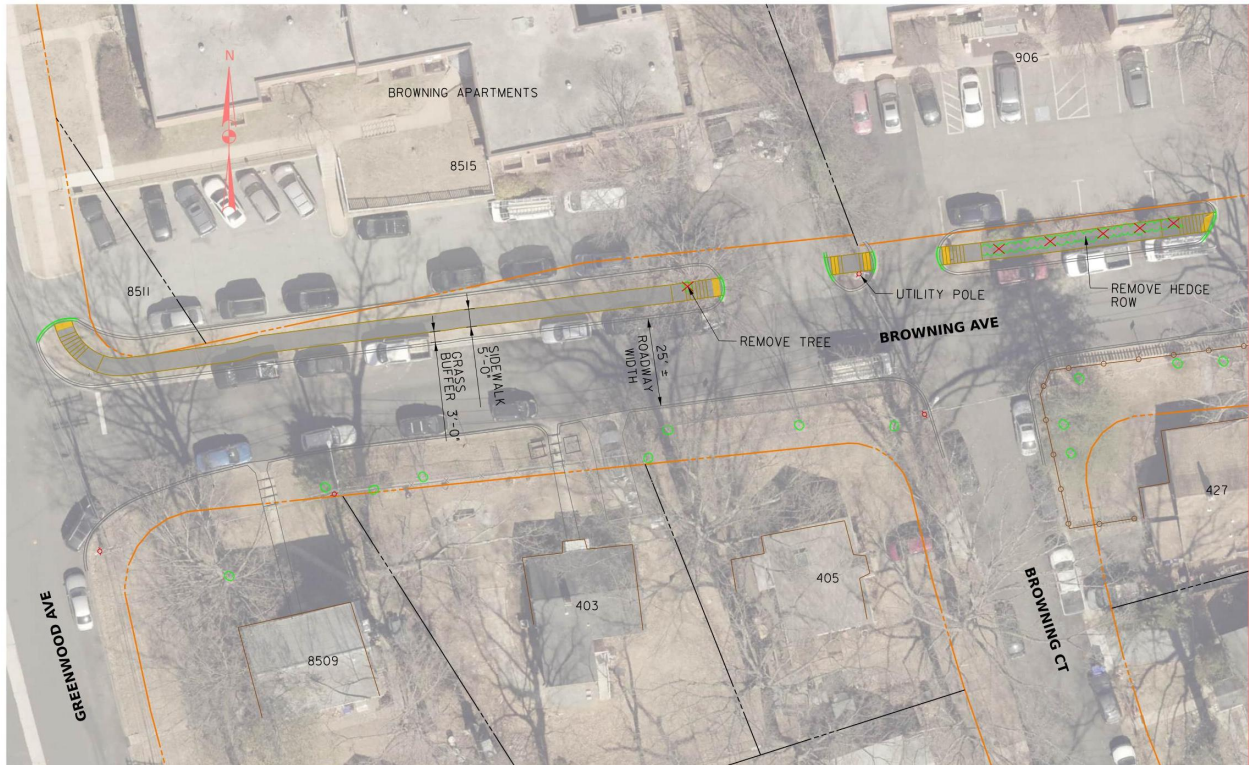


Figure 10: Site plan for proposed sidewalk improvements along Browning Avenue near Greenwood Avenue, showing new 5-inch concrete sidewalk segments, ADA-compliant curb ramps with detectable warning surfaces at intersections and crossings, retaining wall sections, driveway connections, right-of-way boundaries, utility pole location, tree removal and hedge removal areas, adjacent properties (including Browning Apartments), roadway widths, and a graphic scale from 0 to 290 feet.

## Legend

- 5 inch concrete sidewalk
- Detectable warning surface
- ADA ramp
- Approximate right-of-way
- Retaining wall
- New curb
- Concrete driveway

## Project Information

**Consultant:** Mercado Consultants, Inc.

**Project:** Long Branch Purple Line – Sidewalk Improvements

**Sheets Included:**

- Sheet 1
- Sheet 2

---

**Scale:** 1 inch = 20 feet

**Date:** April 2020

**Project No.:** 2009.03

**Sheet:** 12 of 31

# Long Branch Purple Line – Sidewalk Improvements

## Legend

- 6-inch concrete sidewalk
- Detectable warning surface
- ADA SWAP
- Approximate right of way
- Retaining wall
- New C-line
- Concrete driveway



Figure 11: Aerial engineering plan of proposed sidewalk improvements along Glenview Avenue near Garland Avenue, illustrating new sidewalk segments, curb ramps with detectable warnings, driveway crossings, retaining walls, right-of-way limits, and connections to existing sidewalks adjacent to residential properties.

**Company:** Mercado Executive, Inc.  
**Revision:** 01/2013

**Project:** Long Branch Purple Line – Sidewalk Improvements  
**Scale:** 1 inch = 20 feet  
**Date:** April 2020  
**Project No.:** 2009.03  
**Sheet:** 13 of 31

# Long Branch Purple Line Sidewalk Improvements

Mercado Consultants, Inc.

## Project Details

- Scale: 1" = 20'-0"
- Graphic Scale: 0 10 20 50 (feet)
- Date: April 2020
- Project No.: 2009.03
- Drawing No.: 001-01-000

## Legend

Symbol / Line Type	Description
	Detectable Warning Surface
	ADA Ramp
	Approximate Right of Way
	Retaining Wall
	New Curb
	Concrete Driveway



Figure 12: Plan view of Greenwood Avenue sidewalk improvements along the Long Branch Purple Line corridor, showing existing residential parcels with lot lines and building footprints, proposed ADA-compliant ramps at intersections, detectable warning surfaces at curb ramps, new curb alignments, concrete driveway replacements, retaining wall segments, approximate right-of-way boundaries, relocated signage, utility poles, and areas marked for tree removal. The drawing is overlaid on an aerial photograph and includes a graphic and numeric scale of 1" = 20'-0".

# Long Branch Purple Line Sidewalk Improvements

Match line – see Sheet 16

## Plan View

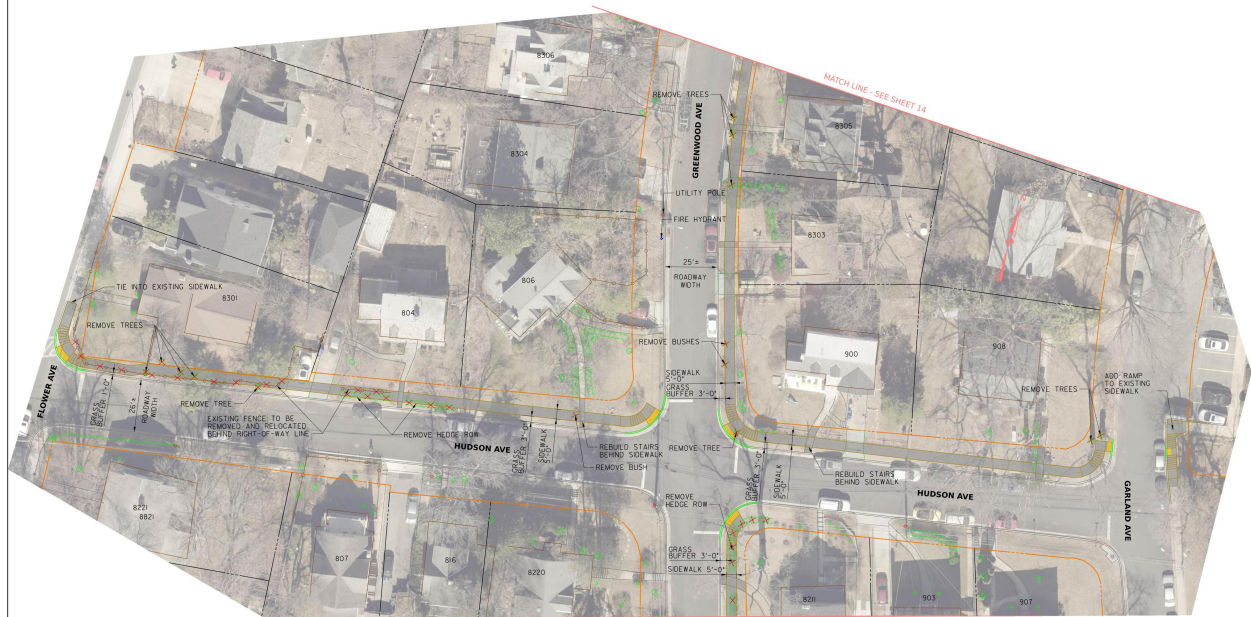


Figure 13: Plan view of sidewalk improvements along Hudson Avenue and adjacent streets, including ADA ramps at intersections, new five-inch concrete sidewalks, detectable warning surfaces, retaining walls, curb replacements, driveway connections, right-of-way boundaries, and match line reference to the continuation on Sheet 16.

## Legend

- 5 inch concrete sidewalk
- Detectable warning surface
- ADA ramp
- Approximate right of way
- Retaining wall
- New curb
- Concrete driveway

S 10 20 107

Scale: 1 inch = 20 feet

## Project Information

---

Company	No.	Revision	Date	By
Mercado Executive, Inc.		01.000		

---

Scale: 1 inch = 20 feet – 5 inches

Date: April, 2020

Account No.: 2404.03

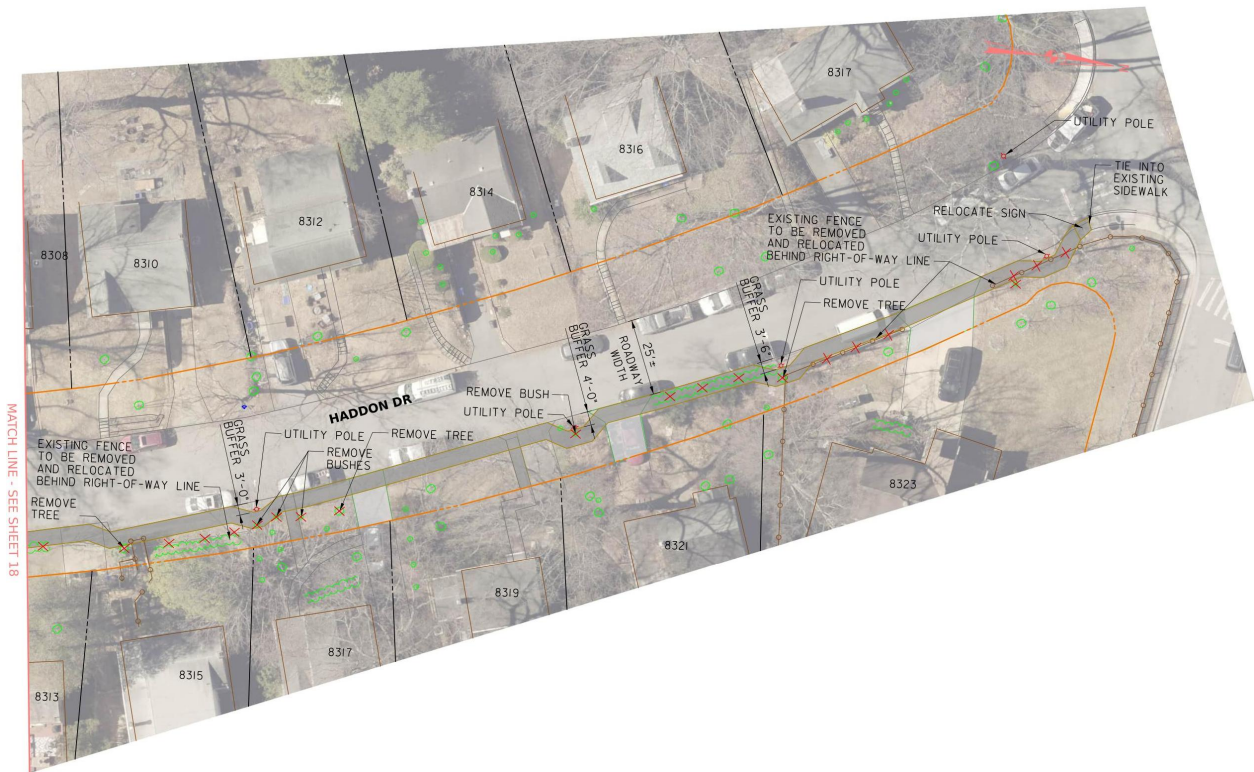
---

Sheet 15 of 31

# Long Branch Purple Line – Sidewalk Improvements

## Legend

- 5 Inch Concrete Sidewalk
- Detectable Warning Surface
- ADA Ramp
- Approximate Right of Way
- Retaining Wall
- New Clip B
- Concrete Driveway



**Figure 14: Plan view of Haddon Drive corridor depicting proposed 5-inch concrete sidewalk alignment along the south side of the street, ADA ramp tie-ins to existing sidewalks, detectable warning surfaces at crossings, grass buffer widths (noted as 3’-6’), approximate right-of-way lines in orange, existing residential parcels with house numbers (e.g., 8308–8323), utility poles, fence relocation notes, tree and bush removals marked with symbols, driveway connections, and match line reference to adjacent sheet.**

MERCADO CONSULTANTS, INC.

No.	Revision	Date	By
	Rev. 01/1999		

---

No.	Revision	Date	By
-----	----------	------	----

---

**Project Information**

- Scale: 1" = 20'-0"
  - Date: April, 2026
  - Account No.: 2909.03
  - Sheet: 17 of 31
-

# Long Branch Purple Line – Sidewalk Improvements

## Legend

- 5-inch concrete sidewalk
- Detectable warning surface
- Americans with Disabilities Act (ADA) ramp
- Approximate right-of-way
- Retaining wall
- New curb inlets (clips)
- Concrete driveway

Graphic scale showing 0, 5, 10, and 20 feet.  
Scale: 1 inch = 20 feet.

MERCADO Consultants, Inc.

## Revision History

No.	Revision (Rev. 10/1982)	Date	By

Scale: 1 inch = 20 feet  
Date: April 2026  
Project No.: 2909.03  
Sheet 1B of 31



Figure 15: Plan view engineering drawing for Long Branch Purple Line sidewalk improvements

along Haddon Drive. The aerial-based plan shows the proposed 5-inch concrete sidewalk running parallel to the roadway, with marked ADA ramps at crossings, detectable warning surfaces at curb ramps, driveway tie-ins, retaining wall segments, and right-of-way boundaries. Utility poles, house walkways, tree removals, rebuilt stairs, and existing property lines for adjacent residential lots are labeled. A graphic scale (1" = 20') and project identification information are included on the sheet.



# LONG BRANCH PURPLE LINE SIDEWALK IMPROVEMENTS

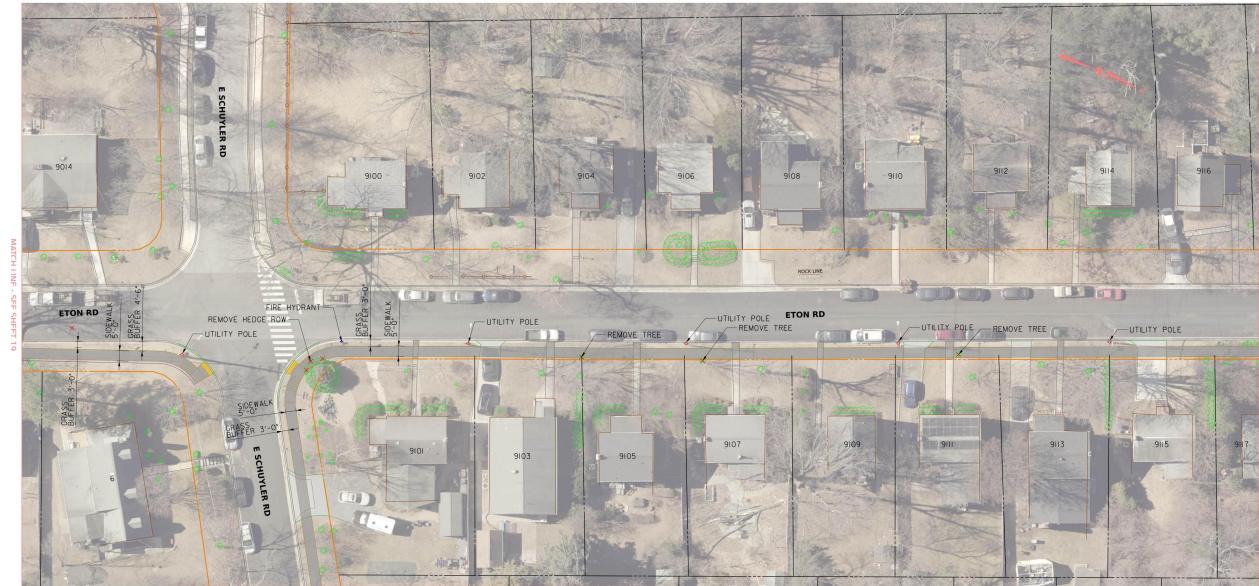


Figure 17: Plan view of proposed sidewalk improvements along Eton Road and E. Schuyler Road. The drawing overlays proposed 5-foot concrete sidewalks, ADA curb ramps with detectable warning surfaces at the intersection, grass buffer areas (3-foot typical), retaining wall segments, approximate right-of-way lines, utility poles, fire hydrant location, tree removals, hedge removal, and property lot lines for residences numbered approximately 9010–9117. A match line indicates continuation on Sheet 28.

## Legend

- 5 INCH CONCRETE SIDEWALK
- DETECTABLE WARNING SURFACE
- ADA RAMP
- APPROXIMATE RIGHT OF WAY
- RETAINING WALL
- NEW FILLS
- CONCRETE DRIVEWAY

MATCH LINE – SEE SHEET 28

## Project Information

Company	Revision	Sheet	Sheet Number
Mercado Executive, Inc.	01.1000	20 of 31	20

Scale: 1" = 20'-5"  
 Date: April, 2020  
 Project No.: 2009.03

# Long Branch Purple Line – Sidewalk Improvements

## Legend

- 5 inch concrete sidewalk
- Detectable warning surface
- ADA ramp
- Approximate right of way
- Retaining wall
- New curb
- Concrete driveway

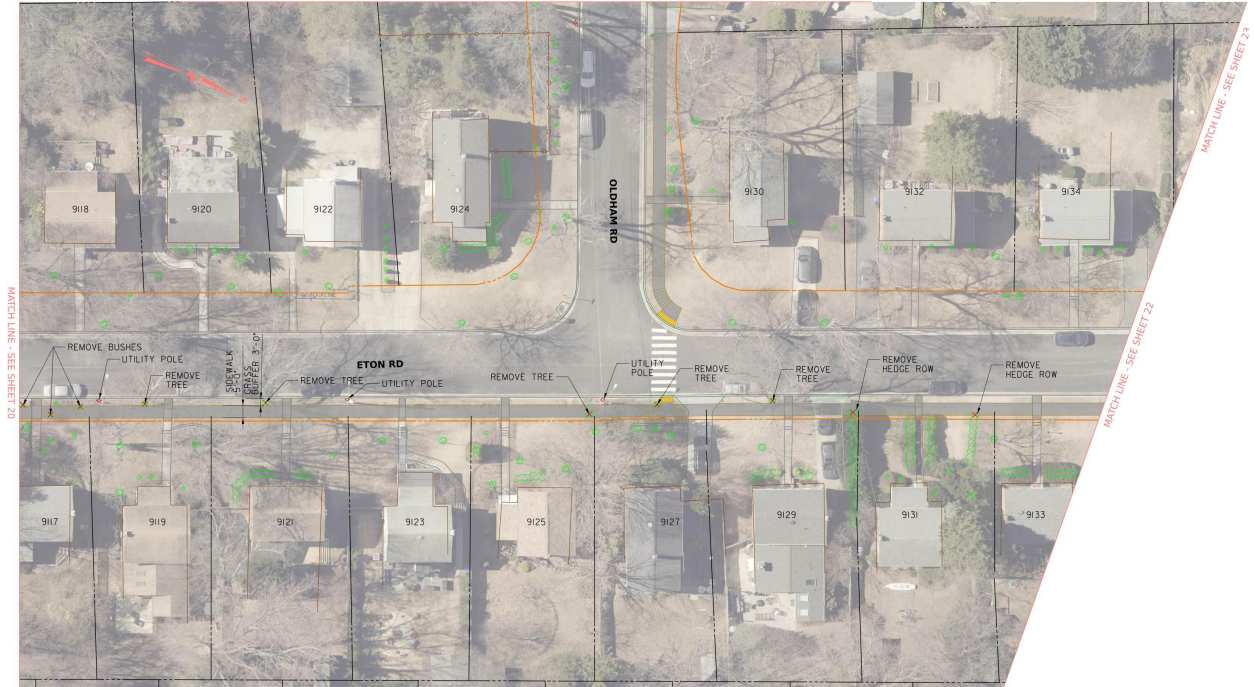
**Consultant:** Mercado Consultants, Inc.

---

No.	Rev.	Date	By
	01.000		

---

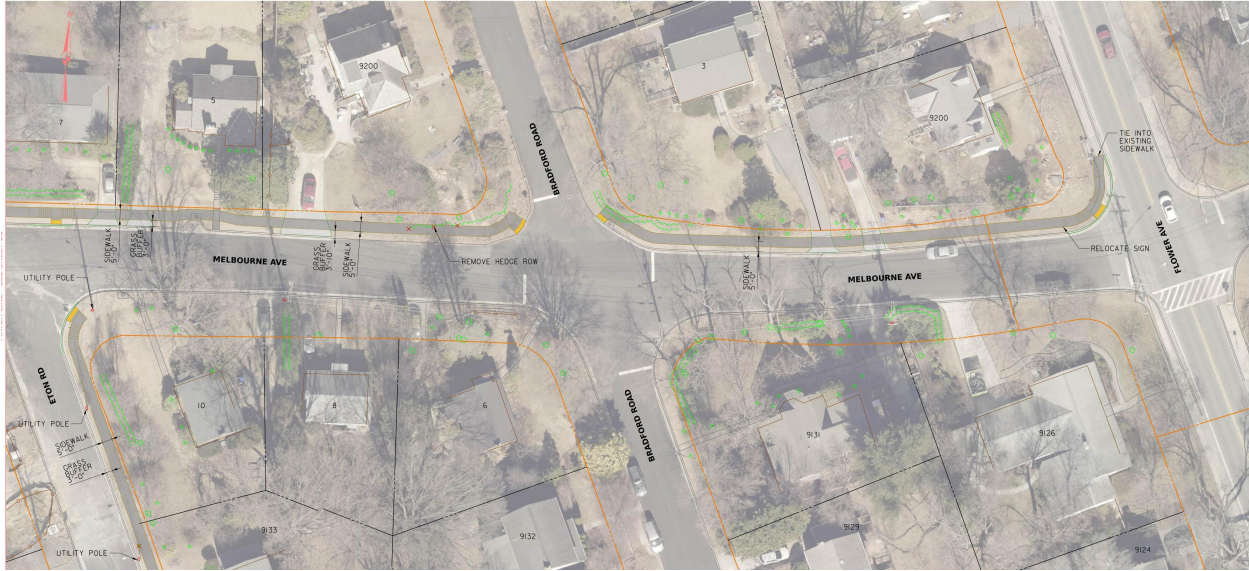
- **Scale:** 1" = 20'-6"
- **Date:** April 2020
- **Account No.:** L2434.03
- **Sheet:** 21 of 31



**Figure 18: Aerial-based site plan of the Long Branch Purple Line sidewalk improvements along Eton Road at Oldham Road. The drawing shows existing residential parcels with house numbers, property lines, and driveways. Proposed 5-inch concrete sidewalks run along Eton Road with marked ADA curb ramps and detectable warning surfaces at the intersection. Annotations indicate removal of trees, bushes, hedge rows, and a utility pole. New curb alignments and approximate right-of-way boundaries are highlighted, along with retaining wall segments and driveway tie-ins.**

# Long Branch Purple Line

## Sidewalk Improvements



**Figure 19: Plan view of proposed sidewalk improvements along Melbourne Avenue at Bradford Road and Flower Avenue. The drawing shows new 5-inch concrete sidewalks, ADA-compliant curb ramps with detectable warning surfaces at intersection corners, new curb construction, driveway tie-ins, retaining wall segments, approximate right-of-way boundaries, and a match line referencing Sheet 21. The plan is overlaid on an aerial photograph of residential properties and includes a graphic scale of 1 inch equals 20 feet.**

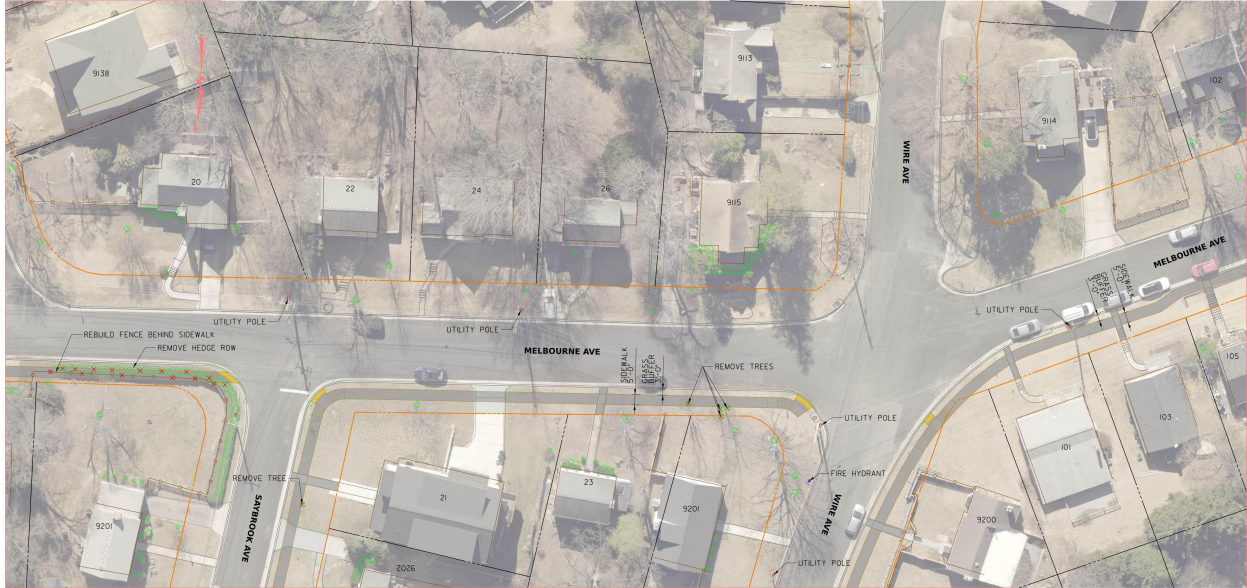
### Legend

- Match line – see Sheet 21
- 5-inch concrete sidewalk
- Detectable warning surface
- ADA ramp
- Approximate right of way
- Retaining wall
- New curb
- Concrete driveway

**Scale:** 1 inch = 20 feet

Company	License	Revision	Date	By
Mercado Consultants, Inc.	SRL	Rev. 01.000	April 2026	—

**Account No.:** 1-2909.03  
**Sheet:** 22 of 31



**Figure 20: Plan view of Long Branch Purple Line sidewalk improvements along Melbourne Avenue and Wire Avenue, showing proposed sidewalk segments, ADA ramps, detectable warning surfaces at crossings, curb and right-of-way lines, utility poles, fire hydrant location, tree removal areas, and match lines referencing adjacent sheets 21 and 24.**

**Legend**

- 5-inch concrete sidewalk
- Detectable warning surface
- Americans with Disabilities Act (ADA) ramp
- Approximate right of way
- Retaining wall
- New curb
- Concrete driveway

**LEGEND**

- 5 INCH CONCRETE SIDEWALK
- DETECTABLE WARNING SURFACE
- ADA RAMP
- APPROX. RIGHT OF WAY
- RETAINING WALL
- NEW CURB
- CONCRETE DRIVE WAY

NO.	REVISION	DATE	BY

**MERCADO**  
CONSULTANTS, INC.

LONG BRANCH  
PURPLE LINE  
SIDEWALK IMPROVEMENTS

SCALE: 1" = 20'-0"    DATE: APRIL 2026  
Project No.: 2404.03    SHEET: 23 of 31

**Figure 21: Title block for the Long Branch Purple Line Sidewalk Improvements project, including scale (1 inch equals 20 feet), date (April 2026), Project No. 2404.03, Sheet 23 of 31, and Mercado Consultants, Inc. identification.**

Scale: 1 inch = 20 feet  
 Date: April 2026  
 Project No.: 2404.03  
 Sheet: 23 of 31

# Long Branch Purple Line Sidewalk Improvements

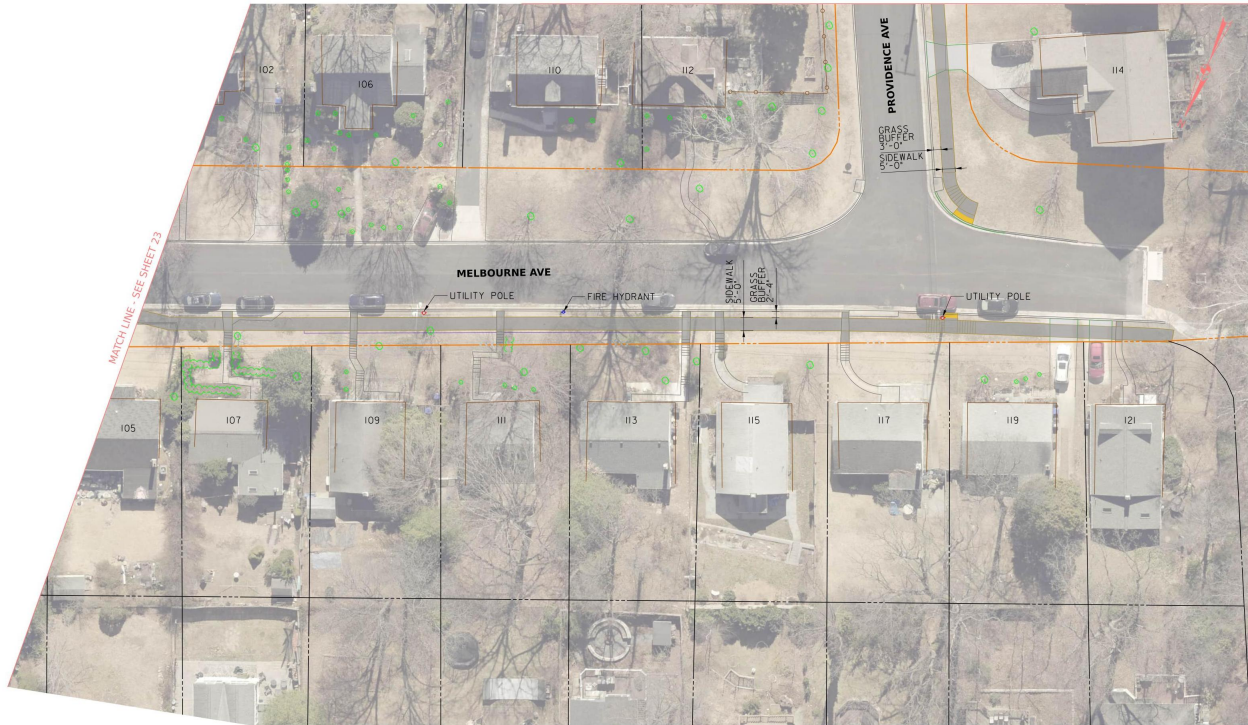


Figure 22: Plan view of proposed sidewalk improvements along Melbourne Avenue at Providence Avenue. The drawing overlays an aerial photograph of residential properties with lot lines, house footprints, and driveways. The north side of Melbourne Avenue shows a labeled grass buffer (3'-0") and sidewalk (5'-0") along Providence Avenue. Curb ramps with detectable warning surfaces are indicated at the intersection corners. Utility poles and a fire hydrant are marked along the corridor. Property boundaries, right-of-way limits, and driveway connections are delineated for houses numbered 105 through 121. Match line reference to adjacent sheet is shown at the project boundary.

## Legend

- 5-inch concrete sidewalk
- Detectable warning surface
- ADA sidewalk ramp
- Approximate right-of-way
- Retaining wall
- New cleanout
- Concrete driveway

## Project Information

**Consultant:** Mercado Consultants, Inc.

**Project:** Long Branch Purple Line – Sidewalk Improvements

**Sheet:** 24 of 31  
**Date:** April 2020  
**Project No.:** 2009.03  
**Scale:** 1 inch = 20 feet



**Figure 23: Aerial-based engineering plan of Long Branch Purple Line sidewalk improvements along Providence Avenue and Ware Avenue. The drawing shows property lines, house footprints, roadway edges, proposed five-inch concrete sidewalk alignment, ADA curb ramps at intersections, detectable warning surfaces, retaining wall segments, new curb locations, driveway tie-ins, approximate right-of-way limits, and utility features such as poles and a fire hydrant. Notes indicate tree and bush removal and fence reconstruction behind the proposed sidewalk. Scale graphic included (1 inch = 20 feet).**

**Legend**

- 5 Inch Concrete Sidewalk
- Detectable Warning Surface
- ADA Ramp
- Approximate Right of Way
- Retaining Wall
- New Curb
- Concrete Driveway

**LEGEND**

- 5 INCH CONCRETE SIDEWALK
- DETECTABLE WARNING SURFACE
- ADA RAMP
- APPROX RIGHT OF WAY
- RETAINING WALL
- NEW CURB
- CONCRETE DRIVE WAY

NO.	REVISION	DATE	BY

LONG BRANCH  
PURPLE LINE  
SIDEWALK IMPROVEMENTS

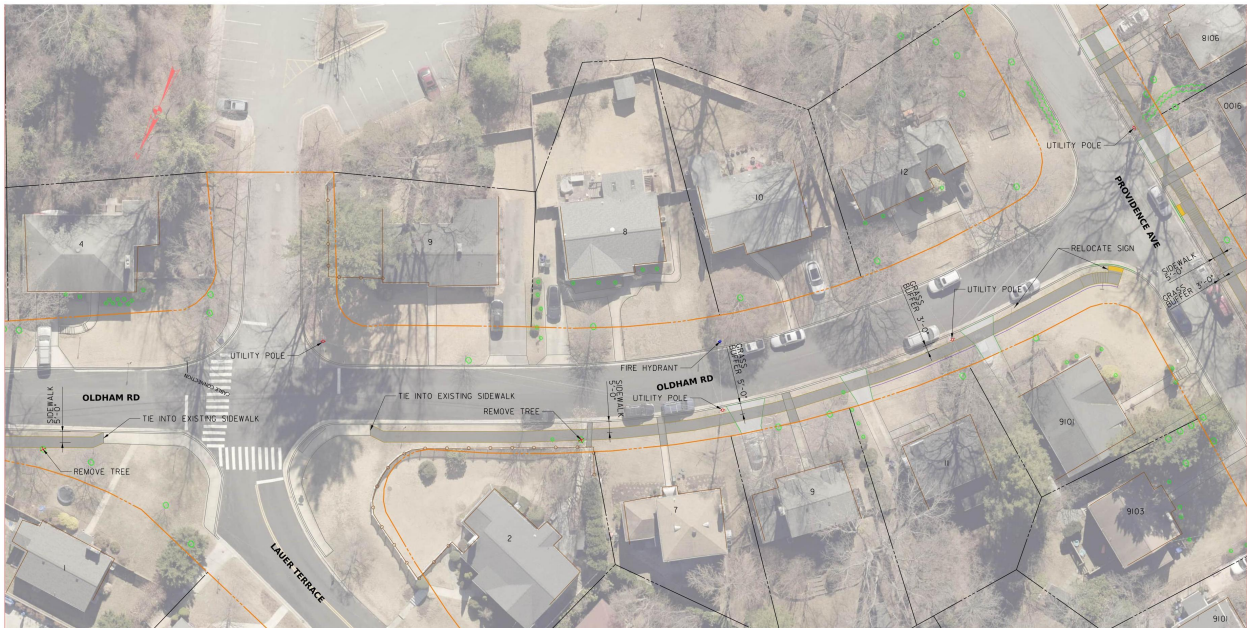
SCALE : 1" = 20'-0"    DATE : APRIL, 2026  
PROJECT NO. : 2424.03    SHEET 28 OF 31

**Figure 24: Title block and legend area for the Long Branch Purple Line Sidewalk Improvements plan. The panel includes the project title, scale (1 inch equals 20 feet), date (April 2026), project number and sheet reference, revision table, consultant identification, and graphic legend symbols corresponding to sidewalk, detectable warning surface, ADA ramp, right-of-way, retaining wall, curb, and driveway elements.**

# Long Branch Purple Line – Sidewalk Improvements

## Legend

- 5-inch concrete sidewalk
- Detectable warning surface
- ADA ramp
- Approximate right-of-way
- Retaining wall
- New curb
- Concrete driveway



**Figure 25: Plan sheet depicting sidewalk improvements along Oldham Road near Providence Avenue and Laurel Terrace. The drawing overlays proposed 5-inch concrete sidewalk segments, ADA ramps with detectable warning surfaces, curb and driveway connections, retaining walls, approximate right-of-way lines, utility poles, a fire hydrant, and tree removal areas onto an aerial image of existing residential properties and streets.**

## Project Information

Field	Value
Project Name	Long Branch Purple Line – Sidewalk Improvements
Consultant	Mercado Consultants, Inc.
Project No.	2404-03
Sheet No.	26 of 31
Scale	1" = 20'
Date	April 2026

# Long Branch Purple Line Sidewalk Improvements

## Legend

- Finish Concrete Sidewalk
- Detectable Warning Surface (ADA)
- ADA Curb Ramp
- Right-of-Way
- Retaining Wall
- Manhole Cover
- Concrete Driveway

Plan Status: 100% Construction Documents

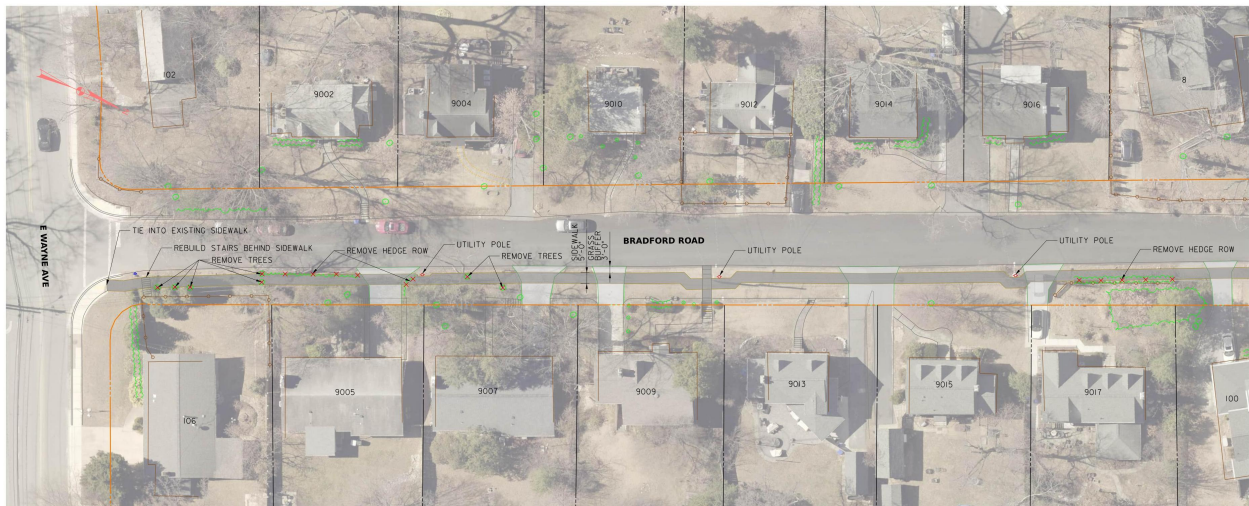
Consultant: Mercado Consultants, Inc.

Scale: 1 inch equals 20 feet (0 inches)

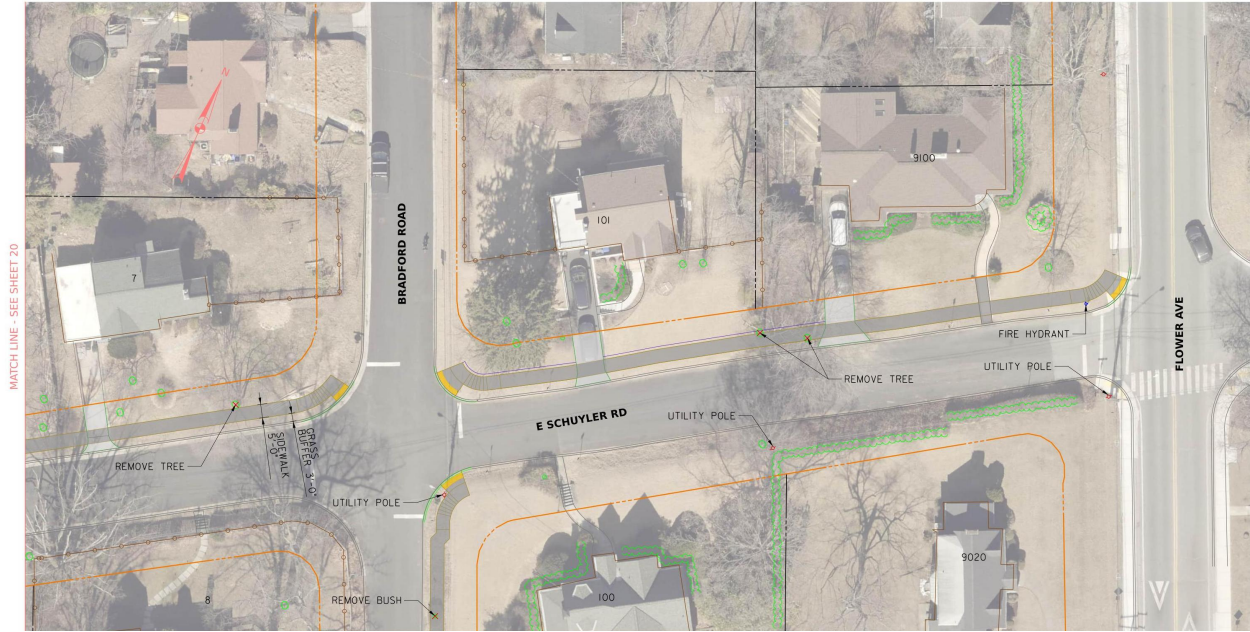
Date: April 2020

Project No.: 2009.03

Drawing Number: 0001-27-0-31



**Figure 26: Aerial-based engineering plan for the Long Branch Purple Line sidewalk improvements along Bradford Road. The plan shows residential parcels on both sides of the street with property lines, house footprints labeled by address numbers, existing and proposed sidewalk segments, driveway connections, detectable warning surfaces at curb ramps, tree removal locations marked with symbols, hedge row removals, utility poles, and tie-ins to existing sidewalks at intersections. Orange lines indicate right-of-way or construction limits, while green markings identify landscaping or vegetation elements.**



**Figure 27: Engineering site plan for Long Branch Purple Line sidewalk improvements at the intersection of E Schuyler Road, Bradford Road, and Flower Avenue. The drawing overlays proposed 5-inch concrete sidewalks, ADA curb ramps with detectable warning surfaces, new curbs, retaining walls, driveway aprons, approximate right-of-way lines, and notes such as “remove tree,” “remove bush,” “utility pole,” and “fire hydrant” onto an aerial base map of residential properties. A match line indicates continuation on Sheet 27.**

**Legend**

Legend describing symbols and surface treatments used in the site plan above:

- 5 inch concrete sidewalk
- Detectable warning surface
- ADA ramp
- Approximate right of way
- Retaining wall
- New curb
- Concrete driveway

**LEGEND**



**Figure 28: Legend panel and graphic scale for the sidewalk improvement plan. The legend displays colored and patterned swatches corresponding to 5-inch concrete sidewalk, detectable warning surface, ADA ramp, approximate right-of-way (dashed line), retaining wall, new curb, and concrete driveway. A bar scale marked 0, 10, 20, and 50 feet indicates a drawing scale of 1 inch equals 20 feet.**

## Long Branch Purple Line

### Sidewalk Improvements

#### Project details

- Company: Mercado Consultants, Inc.
- Revision: 01/2018
- Date: April, 2026
- Scale: 1 inch = 20 feet
- Account No.: 2909.03
- Sheet: 28 of 31

# Sidewalk Improvements – Purple Line, Long Branch

**Consultant:** Mercado Consultants, Inc.

**Scale:** 1" = 20'

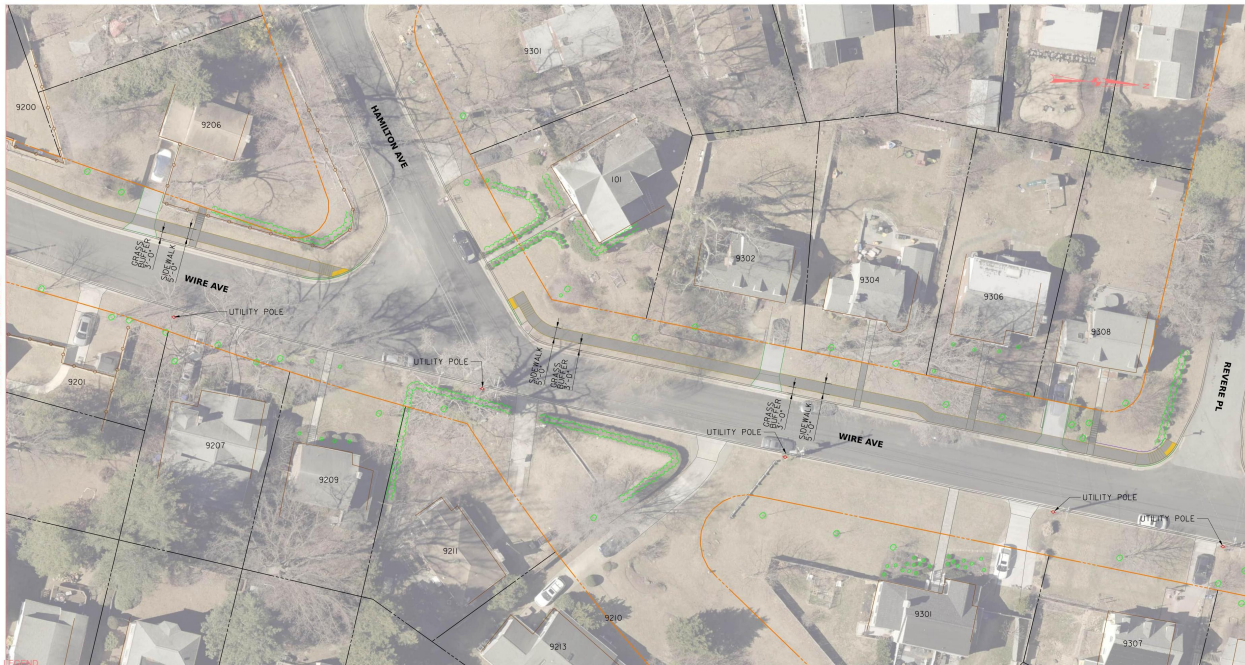
**Date:** April 2026

**Project No.:** 2009.03

**Sheet:** 29 of 31

## Legend (as shown on plan):

- 1 inch concrete sidewalk
- Detectable warning surface
- ADA ramp
- Arterial right-of-way
- Retaining wall
- Metal covers
- Concrete driveway



**Figure 29: Plan view of sidewalk improvements for the Purple Line – Long Branch segment. The drawing is overlaid on aerial imagery and depicts proposed 1-inch concrete sidewalks along Wire Avenue and adjacent streets, ADA-compliant curb ramps with detectable warning surfaces at intersections and driveways, retaining wall segments, utility pole locations, property boundaries, and right-of-way limits. The scale is 1 inch equals 20 feet.**

# Long Branch Purple Line

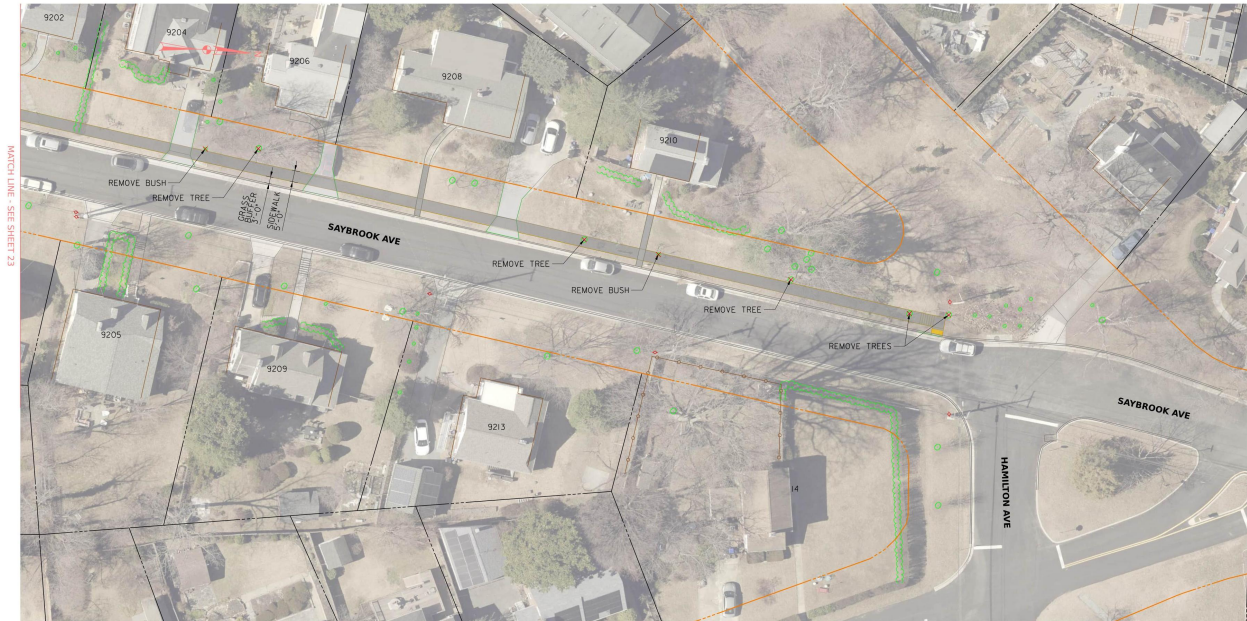
## Sidewalk Improvements

SCALE: 1" = 20'-0"

DATE: April 2026

Project No. 2909.03

Sheet 30 of 31



**Figure 30: Plan view of proposed sidewalk improvements along Saybrook Avenue at Hamilton Avenue. The drawing overlays proposed 5-inch concrete sidewalk segments, ADA-compliant curb ramps with detectable warning surfaces, new curb lines, driveway connections, retaining wall sections, and approximate right-of-way boundaries on an aerial base map. Existing features such as houses, driveways, trees, and bushes are shown, with specific locations marked for tree and bush removal. Street names (Saybrook Ave and Hamilton Ave) and property outlines are visible to indicate construction limits and context.**

### Legend

- 5 Inch Concrete Sidewalk
- Detectable Warning Surface
- ADA Ramp
- Approximate Right of Way
- Retaining Wall
- New Curb
- Concrete Driveway

**Table 1: Title and Revision Block**

---

Company	No.	Rev.	Date	By
Mercado Electronics, Inc.		01.000		

---

# Long Branch Purple Line – Sidewalk Improvements

## Legend

- 5-inch concrete sidewalk
- Detectable warning surface
- ADA ramp
- Approximate right-of-way
- Retaining wall
- New curb
- Concrete driveway

## Plan View

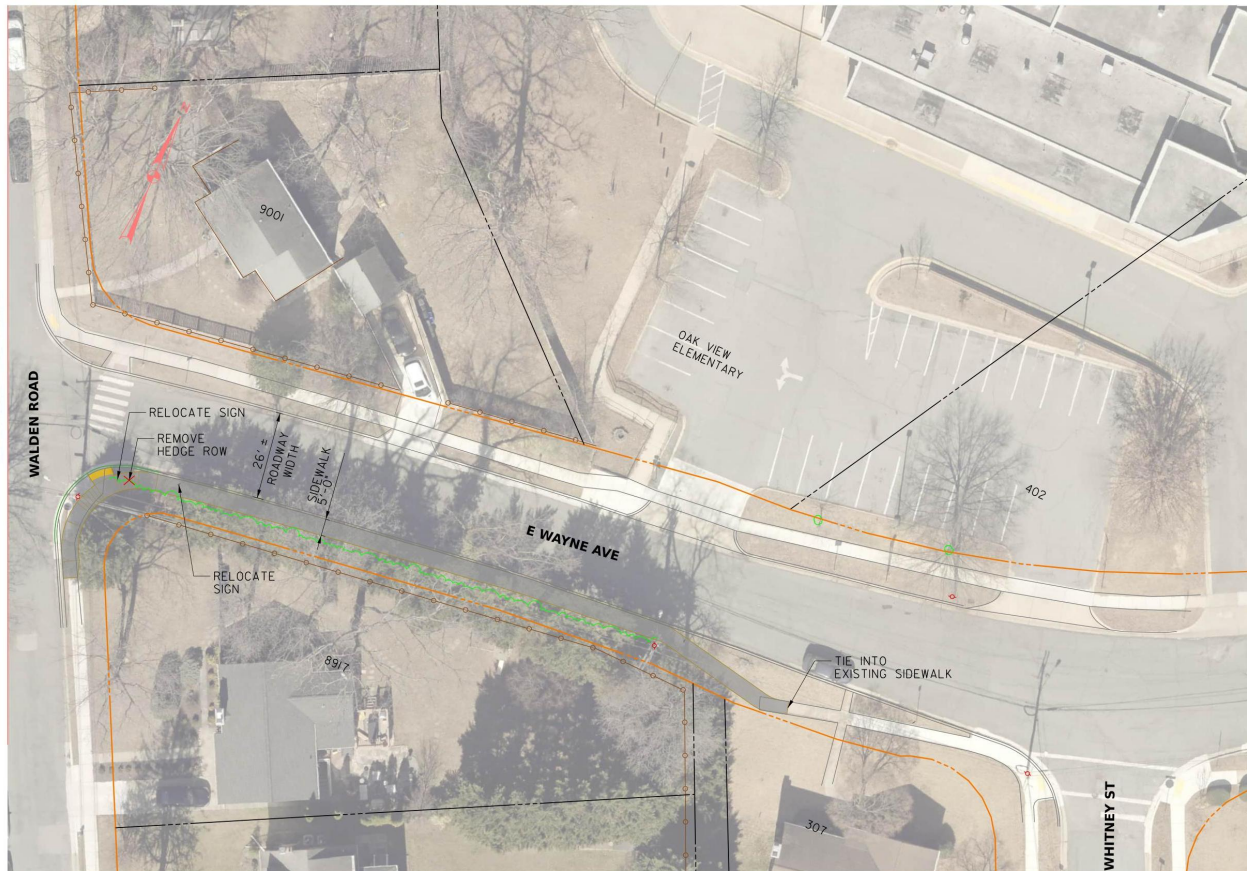


Figure 1: Aerial-based engineering plan depicting sidewalk improvements along Walden Road and E. Wayne Avenue adjacent to Oak View Elementary. The drawing shows the proposed 5-inch concrete sidewalk alignment highlighted along the roadway edge, ADA-compliant curb ramps at intersections, detectable warning surfaces at ramp transitions, sections of retaining wall, new curb construction, driveway connections, and the approximate right-of-way boundary. Street names, property outlines, and tie-in points to existing sidewalks are labeled within the plan view.

## Project Information

**Consultant:** Mercado Consultants, Inc.

**Table 1: Project Revision Information**

Consultant	No.	Revision	Date	DW
Mercado Consultants, Inc.		Rev. 01.2008		DW

## Project Title

**Long Branch Purple Line – Sidewalk Improvements**

Scale: 1" = 20'-0"

Date: April 2026

Account No.: 2909.03

Sheet: 31 of 31