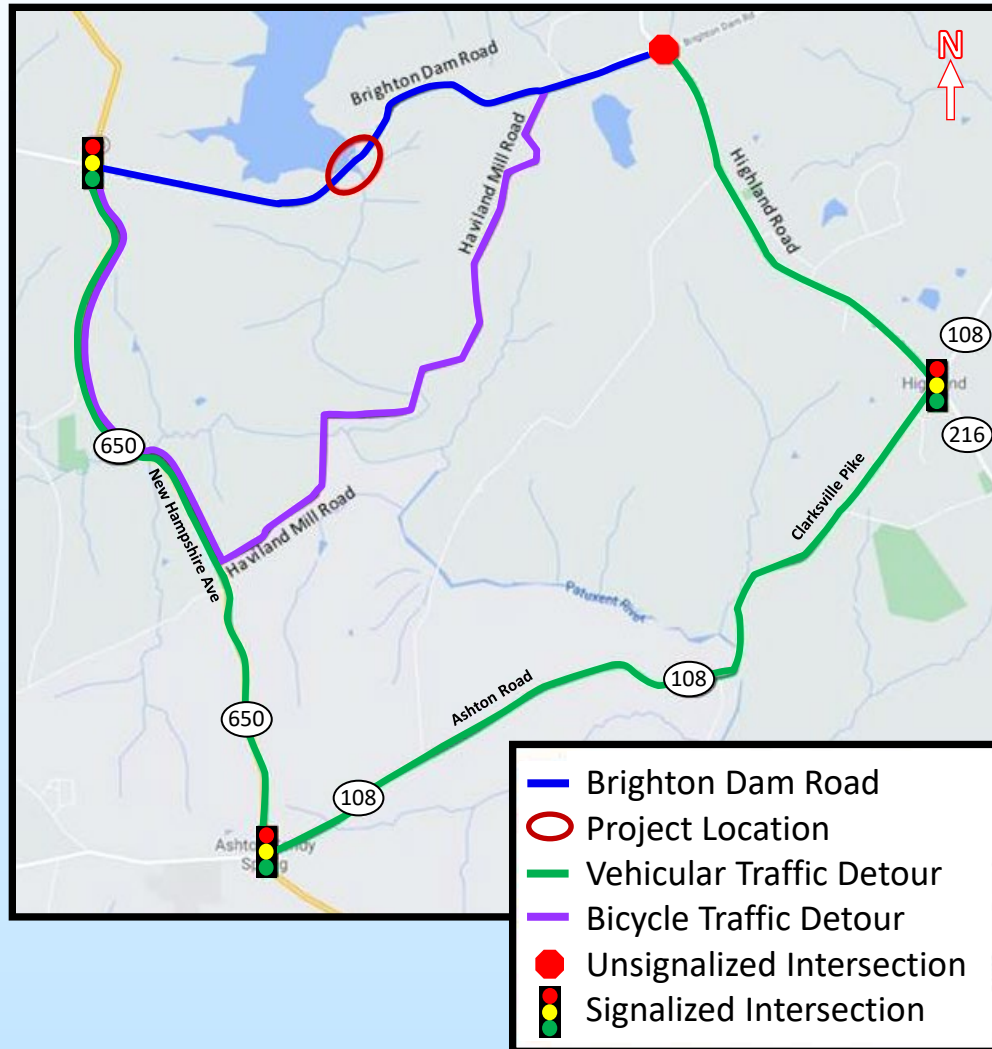


# Rehabilitation of Brighton Dam Road Bridge No. M-0229 over Brighton Dam of Triadelphia Reservoir



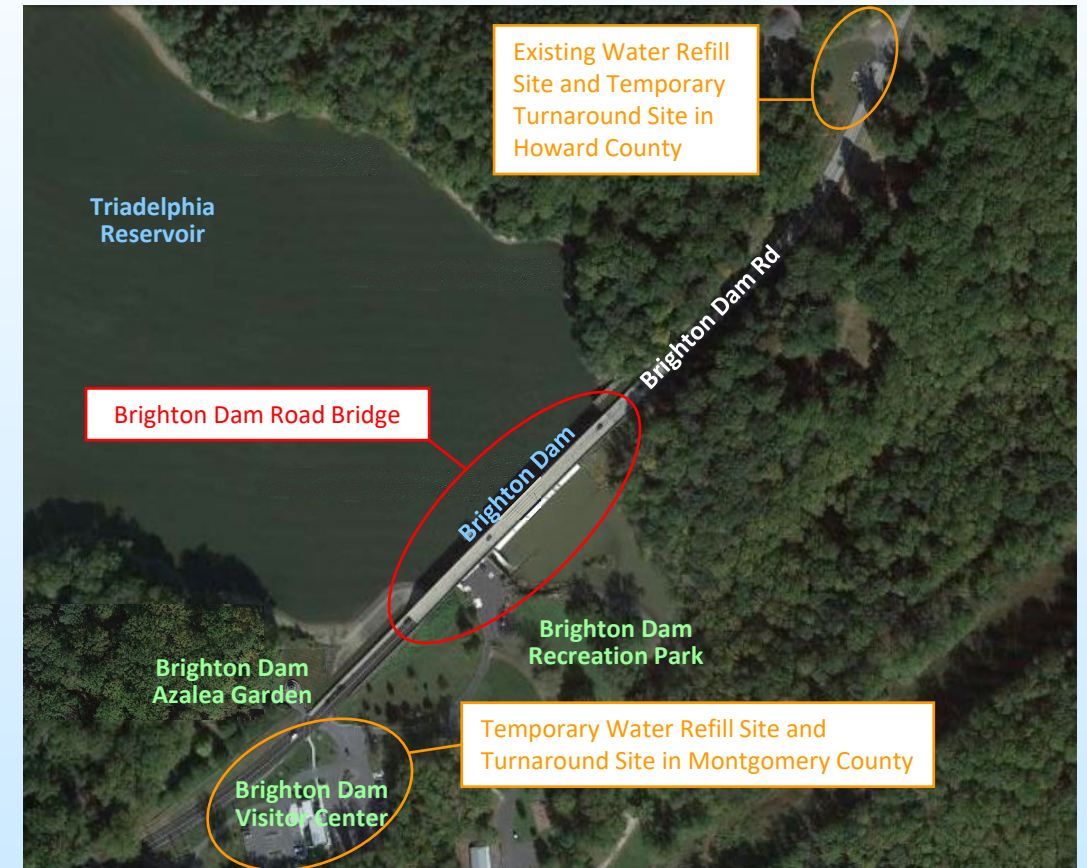
- ◆ **Vehicular traffic detour:**  
— 9.2-mile detour route through New Hampshire Avenue (MD 650 in MC) – Ashton Road (MD 108 in MC) – Clarksville Pike (MD 108 in HC) – Highland Road (in HC) with detour signage
- ◆ **Bicycle traffic detour:**  
— 5-mile detour route through New Hampshire Ave (MD 650 in MC) – Haviland Mill Road (in MC and HC) with detour signage

**MAINTENANCE OF TRAFFIC**  
**DURING CONSTRUCTION**

**Display D-1**

# Rehabilitation of Brighton Dam Road Bridge No. M-0229 over Brighton Dam of Triadelphia Reservoir

- ◆ Existing access for Brighton Dam Visitor Center and Azalea Garden maintained
- ◆ Temporary turnaround sites provided on both the Montgomery County side and Howard County side for public school buses, police vehicles, and fire and rescue trucks
- ◆ Existing water refill site on the Howard County side maintained for tanker fire trucks
- ◆ Temporary water refill tank provided on the Montgomery County side for tanker fire trucks



## MAINTENANCE OF TRAFFIC DURING CONSTRUCTION

Display D-2