

Burtonsville Access Road

Project Number P500500

March 30th, 2022



Public Meeting – Concept Design

Burtonsville Access Road

**BURTONSVILLE
ACCESS ROAD**



OVERVIEW & INTRODUCTIONS



Welcome to the Burtonsville Access Road Virtual Public Meeting!

- Please note that this meeting's audio/video is being recorded and will be posted on the MCDOT website.
- If you do not wish to have your voice or likeness recorded, please turn your video camera off, and refrain from asking questions using the audio option. Instead, you can send your questions via the chat.



ZOOM TUTORIAL - VIDEO

- Your video camera is **off** by default.
- This is done to reduce the bandwidth of the meeting and ensure there are limited disruptions.
- We request that you please keep your camera off for the duration of the meeting.



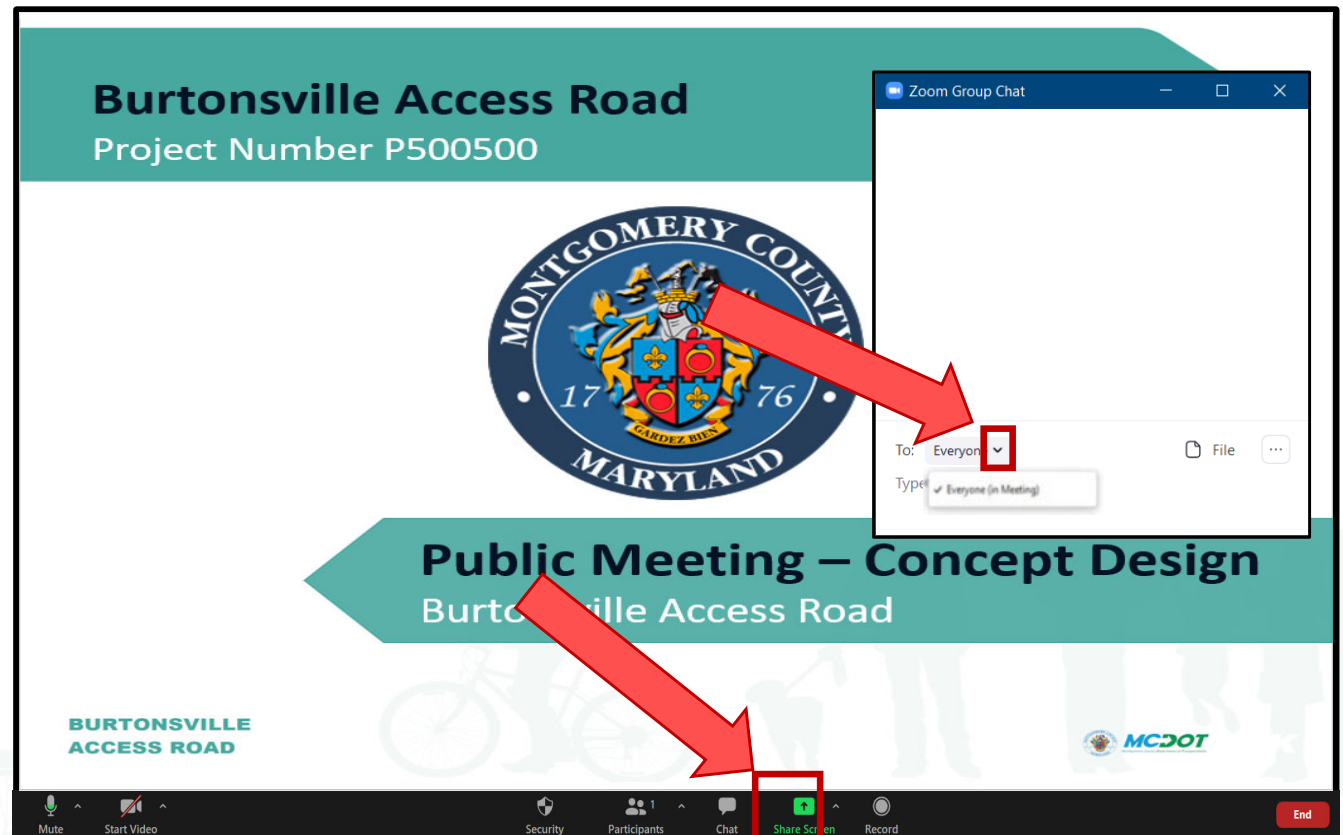
ZOOM TUTORIAL - MUTING

- Everyone is on mute. You cannot unmute yourself. We will unmute you during the Q&A Session.
- To request to speak, you'll need to use the **Raise Hand** feature (instructions to follow). Once we unmute you, you may still need to click a pop-up menu to unmute yourself.
- If you have called in by telephone, you can unmute yourself by dialing *6 once we unmute you.



ZOOM TUTORIAL - QUESTIONS

- **Ask a Question (Text)** – If you have a question during the presentation, use the chat to submit your question.
 - Click “chat” in the bottom menu.
 - A new window will appear. In the “to” field, change the drop down to “Matt Johnson”
 - Type your question and send it.



ZOOM TUTORIAL - QUESTIONS

- **Speaking / Raise Your Hand** – If you'd like to speak to ask a question or make a comment, please raise your hand.
- Click “participants” or “reactions” in the bottom menu.
- A new window will appear. Click the blue “raise hand” button.
- If you've dialed in by phone, dial *9.



MEETING AGENDA

- 7:00PM - Welcome / Zoom Overview
- 7:10PM - Project Team & Meeting Goals
- 7:20PM - Project Background
- 7:30PM - Project Overview
- 7:45PM - Q&A
- 8:30PM - Adjourn



PROJECT TEAM

Michael Mitchell — Project Manager

Matt Johnson - Moderator



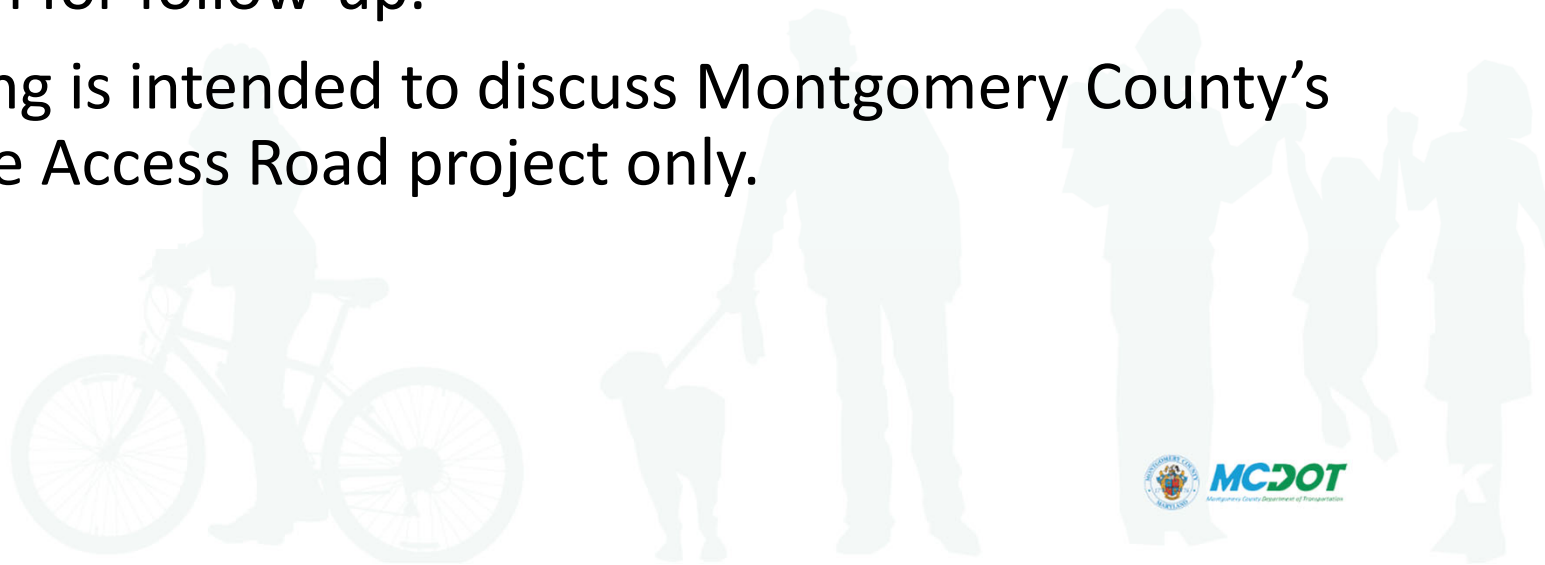
Rick Adams — Project Director

Matthew Kozak — Project Engineer



MEETING GOALS

- Provide an overview of the Burtonsville Access Road project.
- Review the preliminary roadway and shared-use path design.
- Solicit input from community on the current design, potential uses, schedule, and any other project aspects.
- Review project next steps and provide contact information for follow-up.
- This meeting is intended to discuss Montgomery County's Burtonsville Access Road project only.



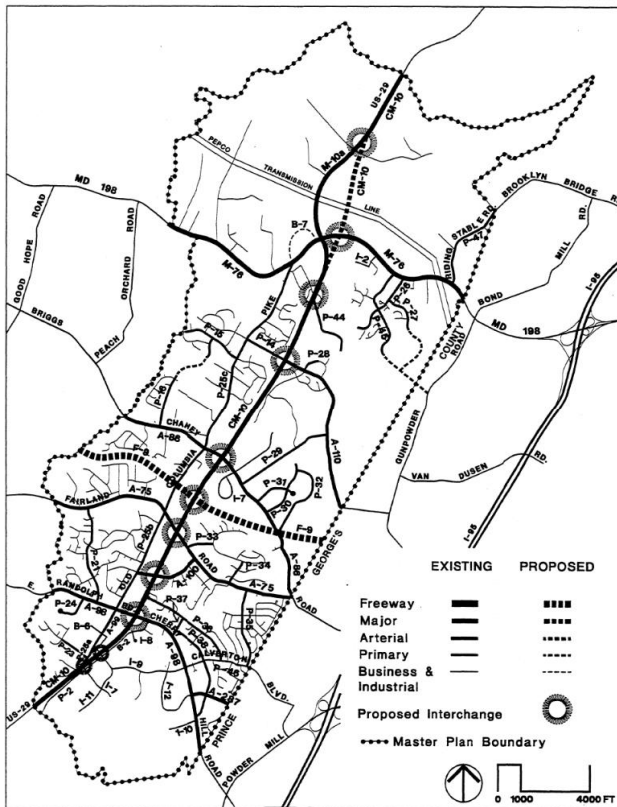
PROJECT BACKGROUND



PROJECT HISTORY

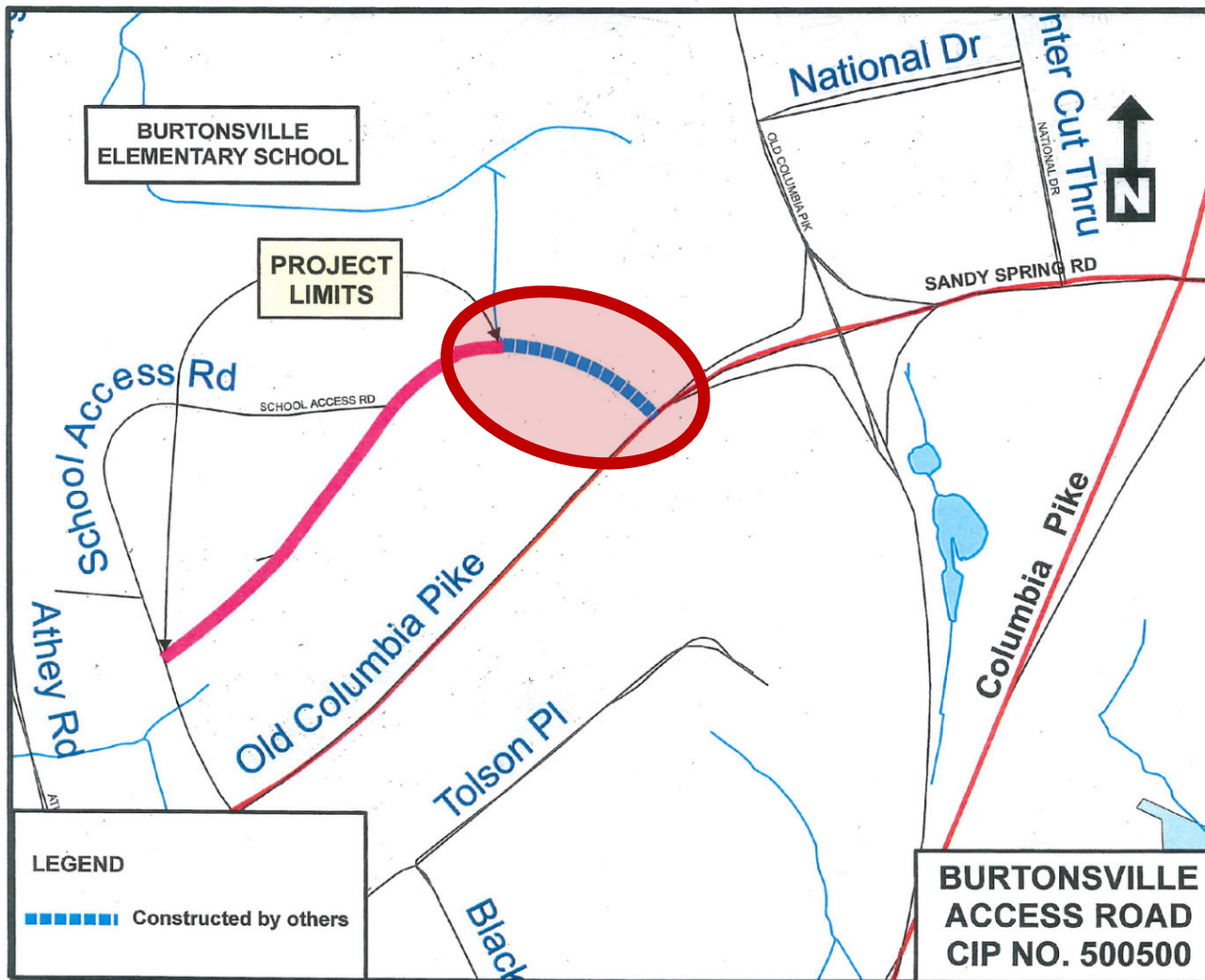
STREET & HIGHWAY PLAN

FIGURE 38



- The BAR was originally planned in the 1997 Fairland Master Plan.
- MCDOT completed final design in 2008.
- Project delayed due to fiscal constraints

PROJECT HISTORY

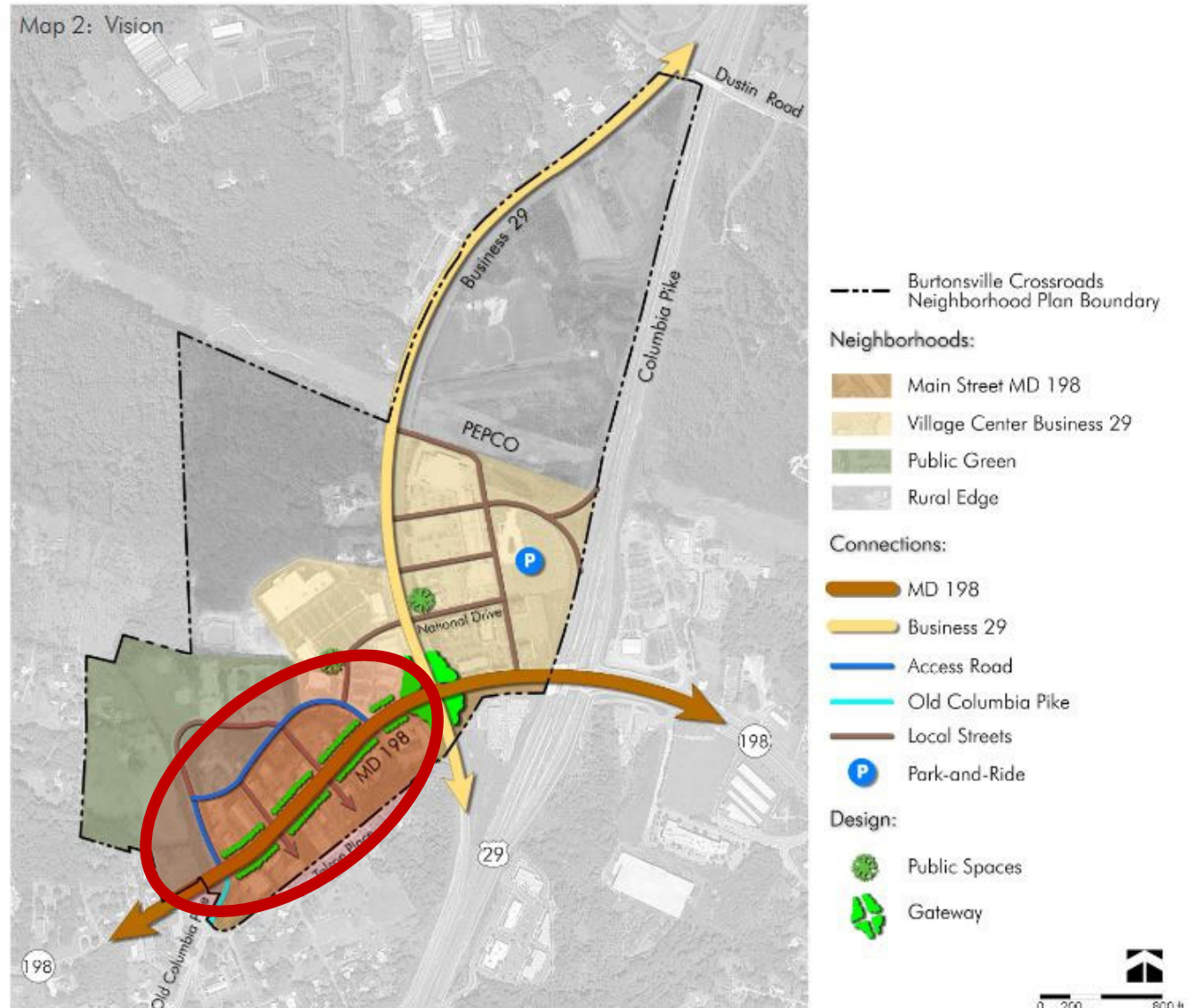


- Burtonsville Town Center
 - Redeveloped in late 2000s by BMC Property Group
- Developer constructed approx. 400 feet of the BAR at intersection with MD 198

EXISTING PLANS – BURTONSVILLE CROSSROADS NEIGHBORHOOD PLAN

- Adopted by Montgomery County Planning in 2012
- Burtonsville Access Road identified as a key connection to existing local streets
- Project funded for final design and construction in 2022 Capital Improvement Program

**BURTONSVILLE
ACCESS ROAD**

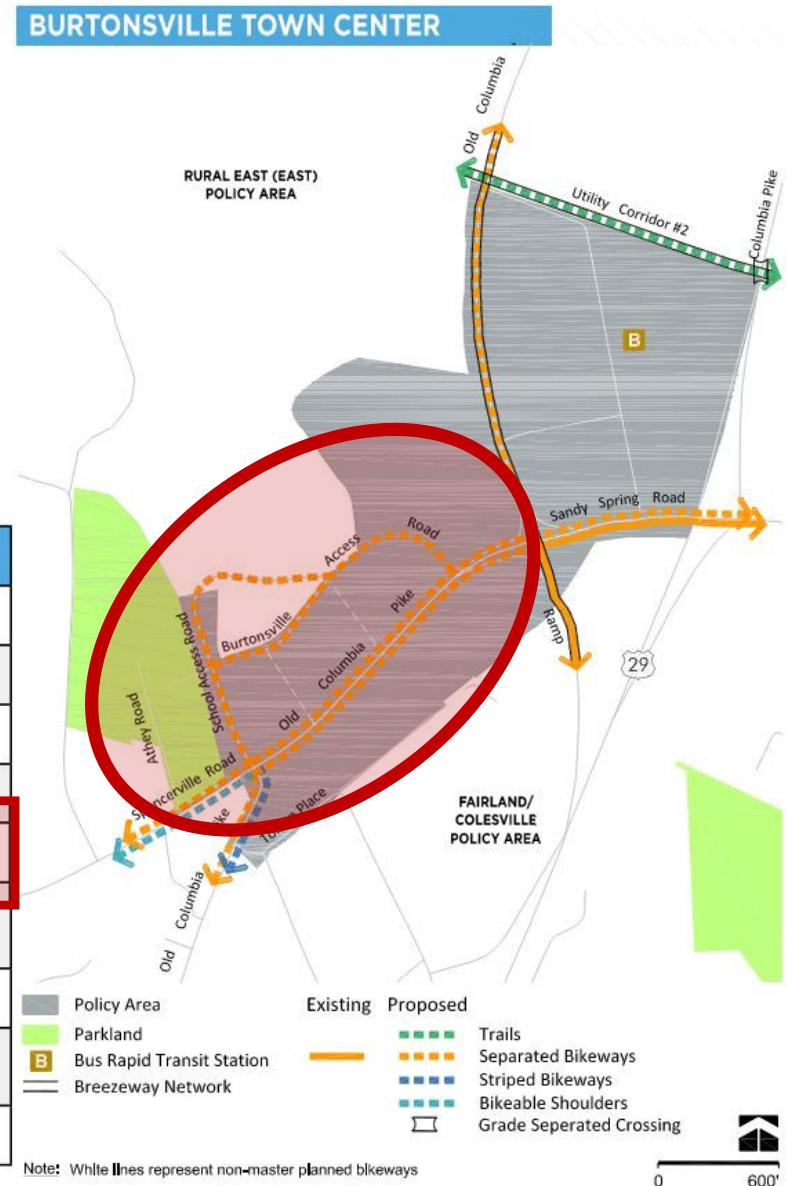


EXISTING PLANS – MONTGOMERY COUNTY BICYCLE MASTER PLAN

MC Bicycle Master Plan (2018)

- Burtonsville Access Road bikeway planned as sidepath
- Key connections to other planned facilities.

BIKEWAY	FROM	TO	FACILITY TYPE	BIKEWAY TYPE
BURTONSVILLE TO SILVER SPRING BREEZEWAY				
Old Columbia Pike	Utility Corridor #2	Sandy Spring Rd (MD 198)	Separated Bikeway	Separated Bike Lanes (Two-Way, East Side)
Columbia Pike Ramp	Sandy Spring Rd (MD 198)	Fairland/Colesville Policy Area	Separated Bikeway	Sidepath (West Side)
ADDITIONAL RECOMMENDATIONS				
Burtonsville Access Road	School Access Road	Old Columbia Pike (MD 198)	Separated Bikeway	Sidepath (Side TBD)
Old Columbia Pike (MD 198)	Sandy Spring Rd (MD 198)	School Access Road	Separated Bikeway	Sidepath (South Side) and Separated Bike Lanes (Two-Way, North Side)
Old Columbia Pike	Spencerville Rd (MD 198)	Tolson Pl	Separated Bikeway and Striped Bikeway	Sidepath (West Side) and Conventional Bike Lanes
Sandy Spring Rd (MD 198)	Old Columbia Pike	Columbia Pike (US 29)	Separated Bikeway	Sidepath (South Side) and Separated Bike Lanes (Two-Way, North Side)
School Access Road	Burtonsville ES	Old Columbia Pike	Separated Bikeway	Sidepath (West Side)



EXISTING PLANS – MARYLAND SHA MD 28 / MD 198 SEGMENT D

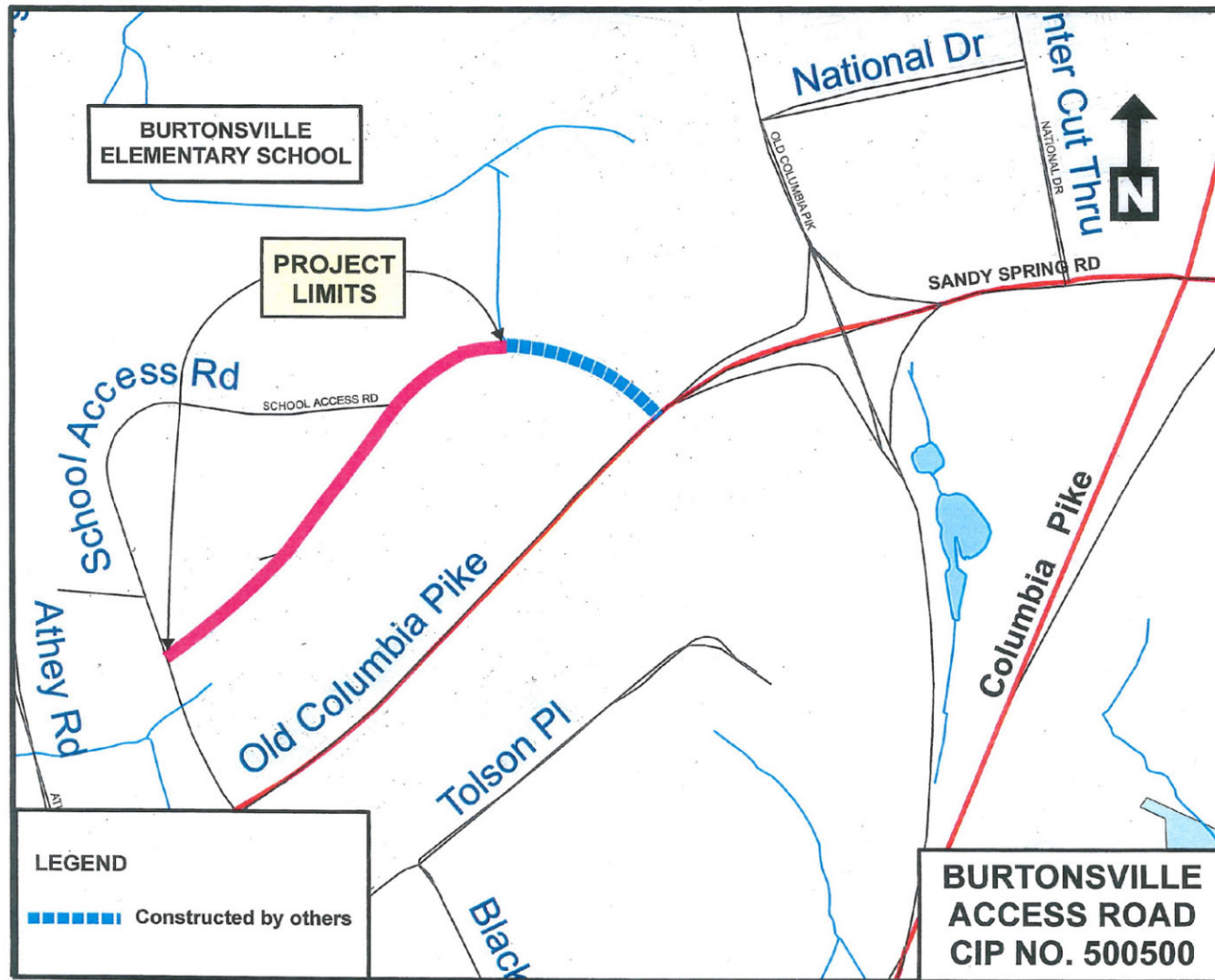
- Preliminary Planning Report Published January 2022
- Improve multi-modal connectivity, accessibility, safety and congestion
- Possible construction of four-lane roadway with raised median
- MD 198 Project is still in planning phase
- NEPA study in progress
- Currently do not have funding for final design and construction



PROJECT OVERVIEW



PROJECT LOCATION



**BURTONSVILLE
ACCESS ROAD**

PROJECT GOALS



connectivity



design

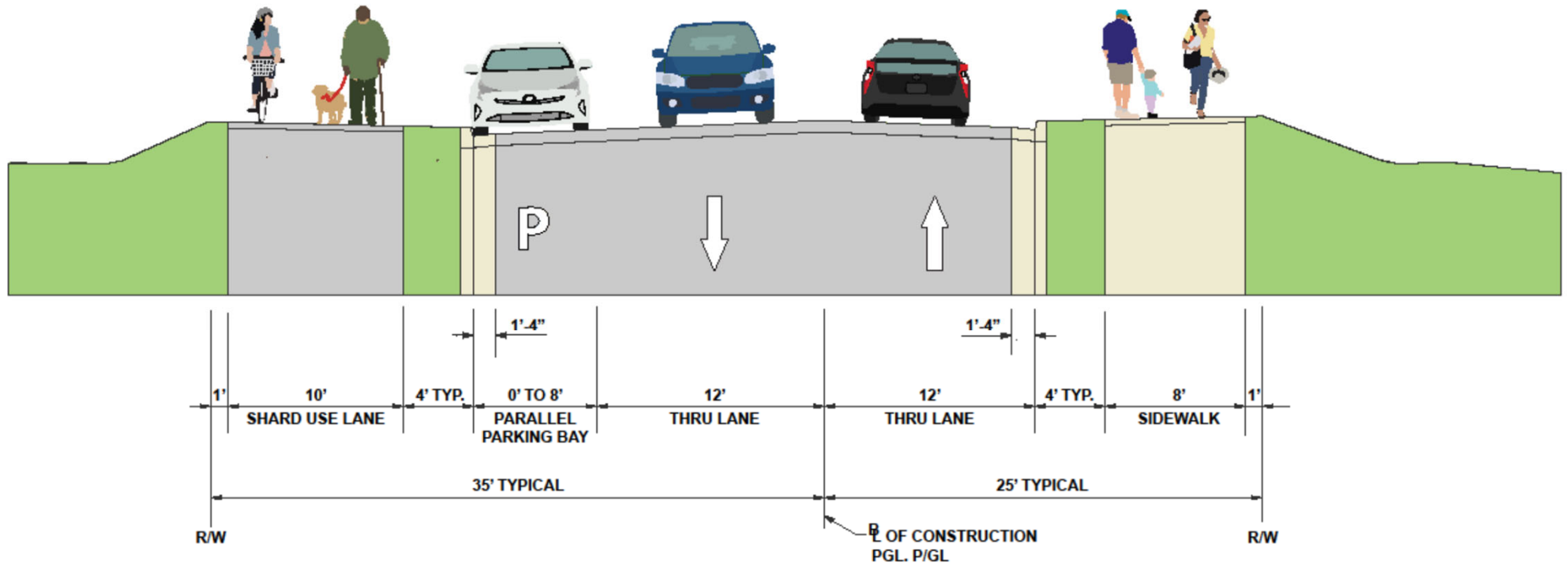


economy

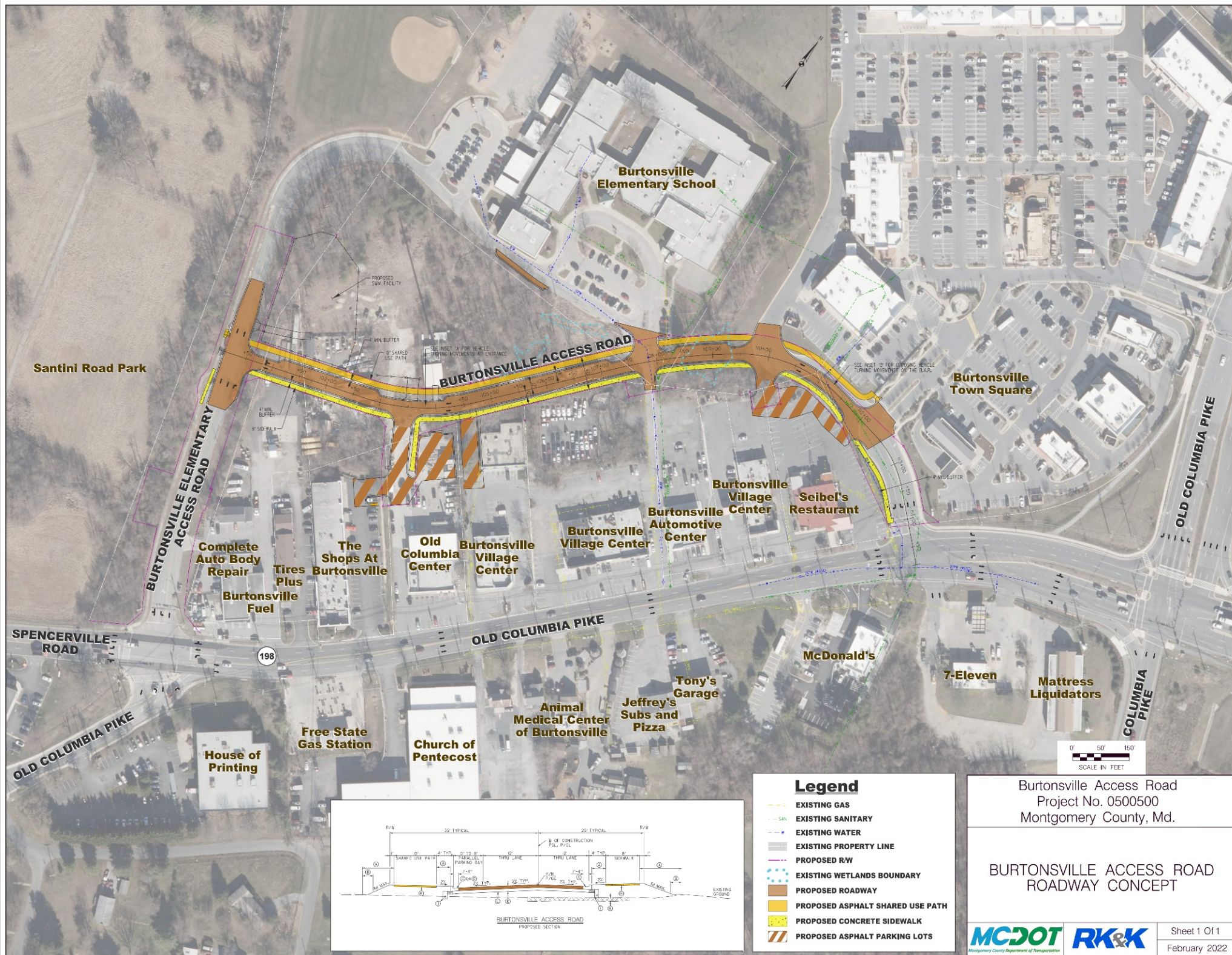
- **Burtonsville Crossroads Neighborhood Plan:**
 - Transform the area from a Crossroads to a Community
 - Provide an expanded network of streets, bikeways, and pedestrian routes.
- **Burtonsville Access Road:**
 - Create a more unified and pedestrian-friendly downtown Burtonsville
 - Provide alternative access and improved safety for vehicles accessing businesses along MD 198
 - Improved bike and pedestrian safety and connectivity
 - Improved access to Burtonsville Elementary School

ROADWAY SECTION

BURTONSVILLE ACCESS ROAD PROPOSED SECTION



**BURTONSVILLE
ACCESS ROAD**



Santini Road Park

Burtonsville
Elementary School

Burtonsville
Town Square

BURTONSVILLE ELEMENTARY
ACCESS ROAD

BURTONSVILLE ACCESS ROAD

OLD COLUMBIA PIKE

Complete
Auto Body
Repair

Tires
Plus

The Shops At
Burtonsville

Old
Columbia
Center

Burtonsville
Village Center

Burtonsville
Village Center

Burtonsville
Automotive
Center

Burtonsville
Village Center

Seibel's
Restaurant

McDonald's

7-Eleven

Mattress
Liquidators

Tony's
Garage

Jeffrey's
Subs and
Pizza

Animal
Medical Center
of Burtonsville

Church of
Pentecost

Free State
Gas Station

House of
Printing

SPENCERVILLE
ROAD

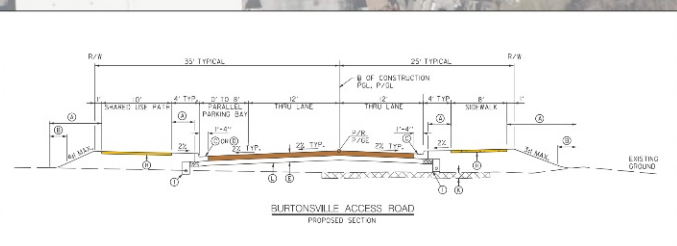
198

OLD COLUMBIA PIKE

0' 50' 150'
SCALE IN FEET

Legend

- EXISTING GAS
- EXISTING SANITARY
- EXISTING WATER
- EXISTING PROPERTY LINE
- PROPOSED R/W
- EXISTING WETLANDS BOUNDARY
- PROPOSED ROADWAY
- PROPOSED ASPHALT SHARED USE PATH
- PROPOSED CONCRETE SIDEWALK
- PROPOSED ASPHALT PARKING LOTS



Burtonsville Access Road
Project No. 0500500
Montgomery County, Md.

BURTONSVILLE ACCESS ROAD ROADWAY CONCEPT

MC DOT
Montgomery County Department of Transportation

RK&K

Sheet 1 Of 1
February 2022

PROJECT SCHEDULE

- Design to be completed December 2022
- Land Acquisitions January 2023 to June 2024
- Construction July 2024 to June 2025



QUESTION & ANSWER

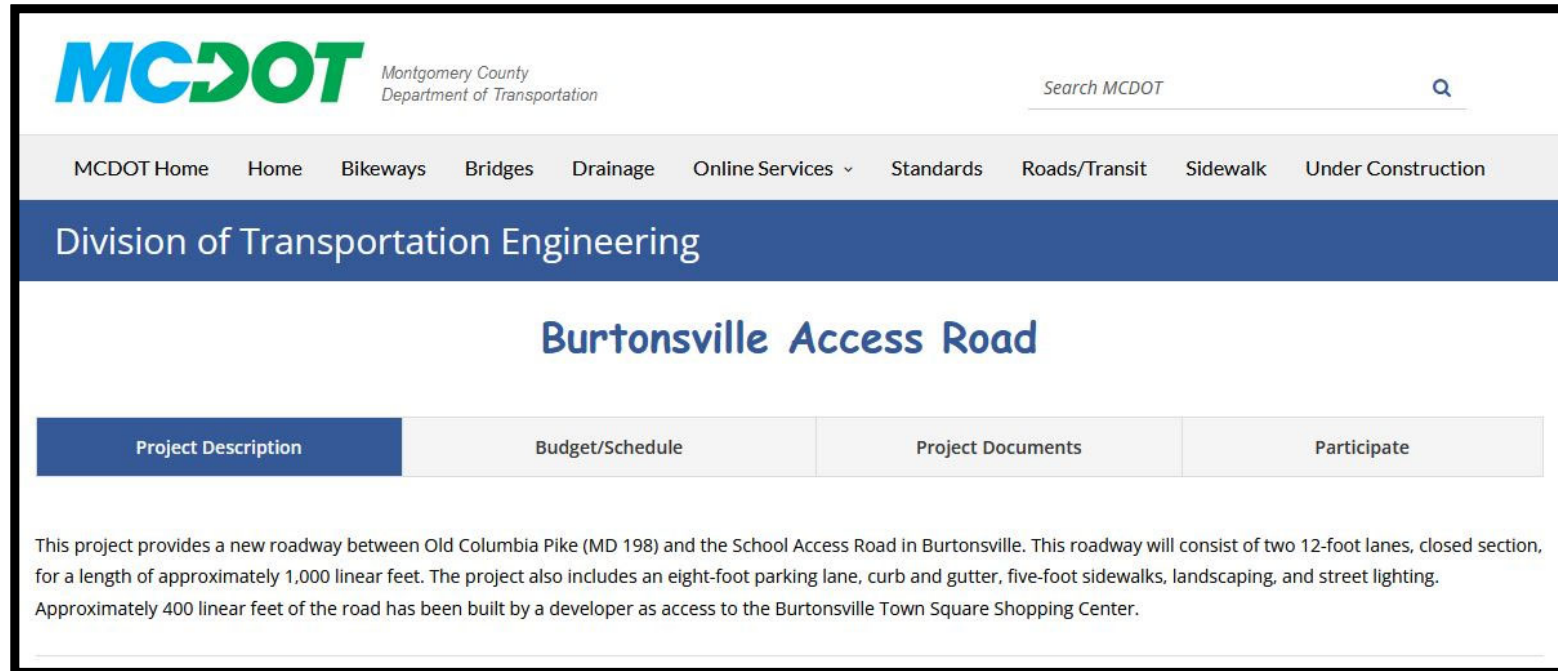


QUESTION & ANSWER

Please ask questions or provide comments by using the **Raise Hand** feature or typing them in the chat.
We want to hear from you!



PROJECT WEBSITE



The screenshot shows the MCDOT website interface. At the top left is the MCDOT logo with the text "Montgomery County Department of Transportation". To the right is a search bar labeled "Search MCDOT". Below this is a navigation menu with links: "MCDOT Home", "Home", "Bikeways", "Bridges", "Drainage", "Online Services", "Standards", "Roads/Transit", "Sidewalk", and "Under Construction". A blue banner below the menu reads "Division of Transportation Engineering". The main heading is "Burtonsville Access Road". Below this is a table with four tabs: "Project Description", "Budget/Schedule", "Project Documents", and "Participate". The "Project Description" tab is selected, showing a paragraph of text about the project: "This project provides a new roadway between Old Columbia Pike (MD 198) and the School Access Road in Burtonsville. This roadway will consist of two 12-foot lanes, closed section, for a length of approximately 1,000 linear feet. The project also includes an eight-foot parking lane, curb and gutter, five-foot sidewalks, landscaping, and street lighting. Approximately 400 linear feet of the road has been built by a developer as access to the Burtonsville Town Square Shopping Center."

MCDOT Montgomery County Department of Transportation

Search MCDOT

MCDOT Home Home Bikeways Bridges Drainage Online Services Standards Roads/Transit Sidewalk Under Construction

Division of Transportation Engineering

Burtonsville Access Road

Project Description	Budget/Schedule	Project Documents	Participate
<p>This project provides a new roadway between Old Columbia Pike (MD 198) and the School Access Road in Burtonsville. This roadway will consist of two 12-foot lanes, closed section, for a length of approximately 1,000 linear feet. The project also includes an eight-foot parking lane, curb and gutter, five-foot sidewalks, landscaping, and street lighting. Approximately 400 linear feet of the road has been built by a developer as access to the Burtonsville Town Square Shopping Center.</p>			

<https://montgomerycountymd.gov/dot-dte/projects/BurtonsvilleAccess/index.html>

- Take the survey and provide comments
- Review project information, plans, and documents
- Participate in upcoming events and stay up to date with project announcements

CONTACT & FEEDBACK



QUESTIONS & COMMENTS

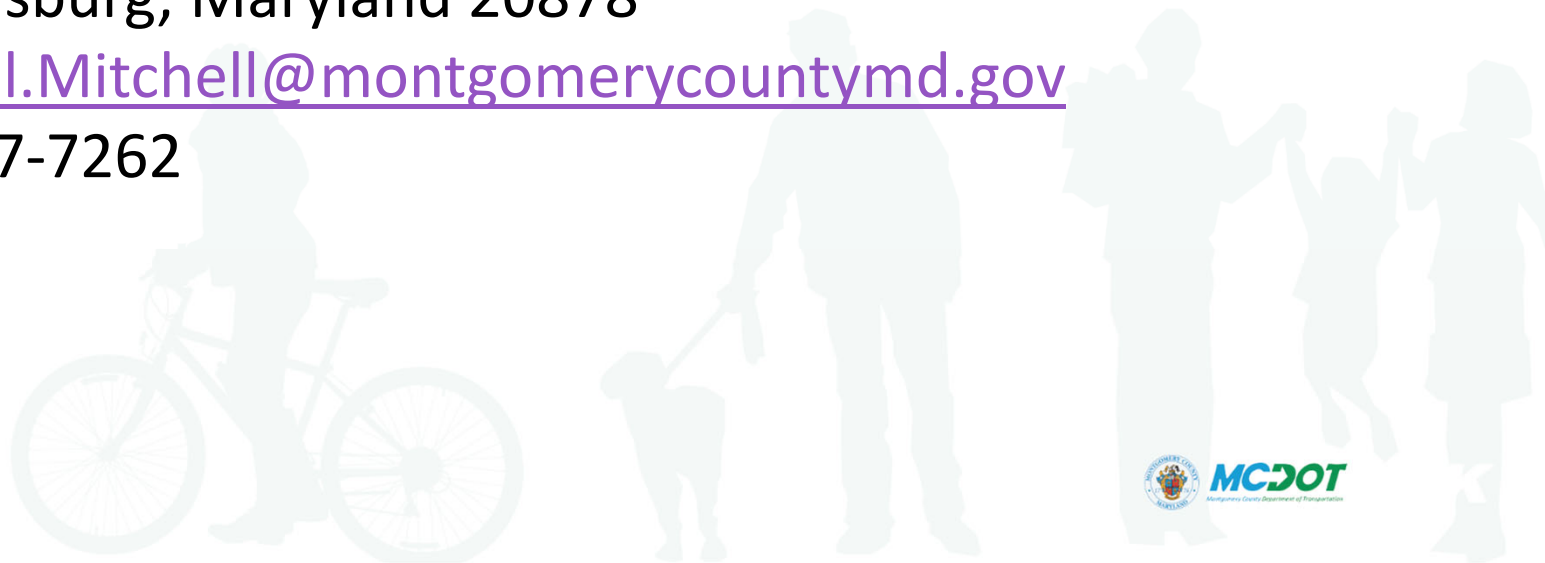
MCDOT Project Manager Contact Information

Michael Mitchell, PE, Senior Engineer
Montgomery County Department of
Transportation (MCDOT)

Division of Transportation Engineering
100 Edison Park Drive, 4th Floor SE
Gaithersburg, Maryland 20878

Michael.Mitchell@montgomerycountymd.gov

240-777-7262



THANK YOU!

