



MONTGOMERY COUNTY PLANNING DEPARTMENT
THE MARYLAND-NATIONAL CAPITAL PARK AND PLANNING COMMISSION

May 29, 2019

Mr. Al Roshdieh, Director
Montgomery County Department of Transportation
Executive Office Building
101 Monroe Street, 10th Floor
Rockville, Maryland 20850

SUBJECT: Dale Drive Pedestrian Facility Improvement Project: Proposed sidewalk/sidepath improvements on Dale Drive between Georgia Avenue (MD 97) and Colesville Road (US 29), *North and West Silver Spring Master Plan.*


Dear Mr. Roshdieh:

At our regularly scheduled meeting on May 9, 2019, the Montgomery County Planning Board received a briefing from your agency for the design of pedestrian, bicycle and safety improvements on Dale Drive between Georgia Avenue (MD 97) and Colesville Road (US 29). No action was required of the Planning Board; however, we wanted to transmit to you the following comments/information:

1. Chairman Anderson questioned the design for Intersection Concept 1 – Realignment for the intersection of Dale Drive with Columbia Boulevard/Woodland Drive. His comment was a suggestion that the improvement should connect Woodland Drive and Columbia Boulevard more smoothly into one road before “T-ing” it into Dale Drive at Corwin Drive.
2. Planning staff provided some slides at the briefing following the presentation from your staff with the following preliminary comments:
 - a. The sidepath on the north side is the preferred concept by Planning Staff. The north side in general is expected to have fewer grading and tree impacts. The sidepath versus the sidewalk is more consistent with the Bicycle Master Plan.
 - b. Intersection Concept 1 – Realignment is the improvement concept preferred for the intersection of Dale Drive with Columbia Boulevard/Woodland Drive.

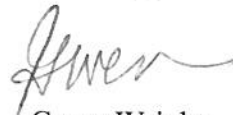
Mr. Al Roshdieh
May 29, 2019
Page Two

- c. There is a desire for more crosswalks across Dale Drive than proposed. Planning Staff are happy to continue to coordinate with your staff to discuss these locations.
- d. There is a need to provide a better connection for bicyclists and pedestrians for the Woodland Drive Greenway. This could include a closure to traffic of a short block of Woodland Drive between Dale Drive and Luzerne Avenue and replacement with a bike or sidepath connection between Luzerne and Corwin Avenues (see slide in attached presentation).
- e. Tighter geometric improvements to the intersection of Dale Drive with Grace Church Road are desired (see slide in attached presentation).

In addition, public testimony was submitted to the Chair's Office, and this information is attached for your consideration.

The Planning Department appreciates the opportunity to review this project and continue coordinating with your staff as this project proceeds toward preliminary design. If you have questions, please contact Stephen Aldrich at 301-495-1301 or Stephen.Aldrich@montgomeryplanning.org.

Sincerely,



Gwen Wright
Director

Attachments:

Technical Staff Report dated May 9, 2019
MCDOT Dale Drive Presentation
M-NCPPC Staff Review Slides
Public Comments Submitted to Chair's Office/MC Tracker

cc: Stephen Aldrich, Master Planner, M-NCPPC
Jason Sartori, Acting Chief, M-NCPPC



Briefing on the Dale Drive Pedestrian Facility Improvement Project – Facility Design Study

SA | Stephen Aldrich, Master Planner, Stephen.Aldrich@montgomeryplanning.org, 301-495-4528

JS | Jason Sartori, Acting Chief, FP&P, Jason.Sartori@montgomeryplanning.org, 301-495-2172

Completed: 05-02-19

Description

Construction of pedestrian facility improvements along a one-mile segment of Dale Drive between Georgia Avenue (MD 97) and Colesville Road (US 29) in Silver Spring, Maryland.

- Applicant: Montgomery County Department of Transportation
- North and West Silver Spring Master Plan/Bicycle Master Plan

Staff Recommendation: NA

Summary

The Montgomery County Department of Transportation (MCDOT) is proposing pedestrian facility improvements along a one-mile segment of Dale Drive between Georgia Avenue (MD 97) and Colesville Road (US 29) in Silver Spring, Maryland. The project location is displayed in Figure 1. The project is being conducted as part of the Facility Planning Phase 1 Capital Improvement Program budget. The applicant will provide a presentation to the Planning Board and be available to respond to questions from the Planning Board. The MCDOT presentation is attached with this staff report. Staff has been working with the applicant in reviewing the concept plans and we will share initial discussions on that review after the Presentation.

This is a briefing to present a summary of design efforts conducted, alternatives considered, technical findings, and public comments received. The project has assessed pedestrian and bicycle needs along Dale Drive and has developed two sidewalk concepts, two sidepath concepts, and three intersection improvement concepts for the intersection of Dale Drive with Columbia Boulevard.

The corridor pedestrian and bicycle alternatives are as follows:

1. Sidewalk along the north side of Dale Drive
2. Sidewalk along the south side of Dale Drive
3. Sidepath along the north side of Dale Drive
4. Sidepath along the south side of Dale Drive

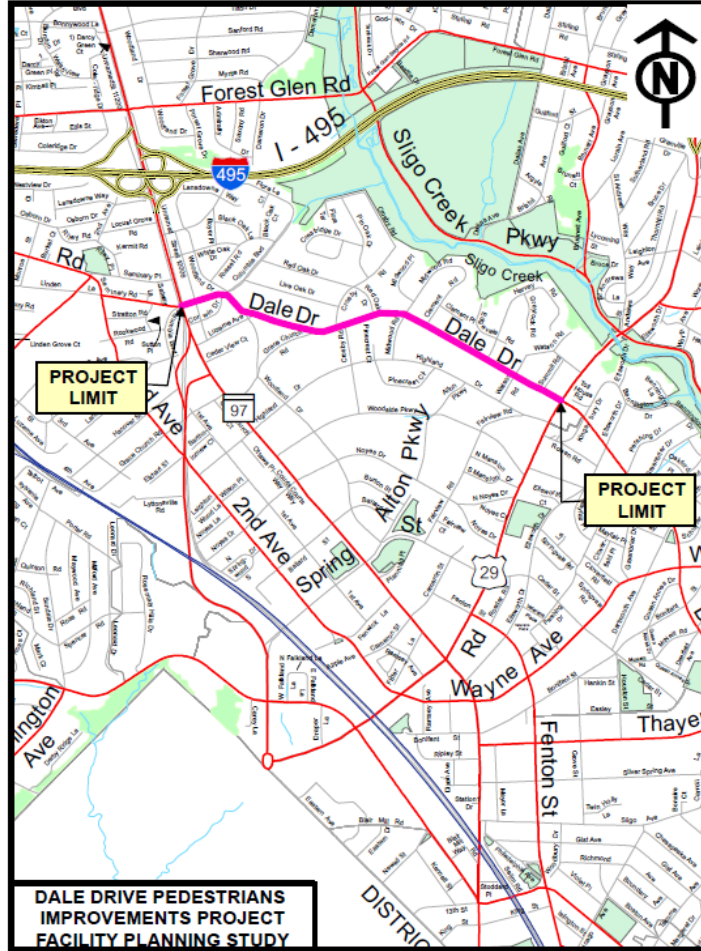


Figure 1 – Site Location Map

The intersection improvement alternatives for the intersection of Dale Drive with Columbia Boulevard are as follows:

1. Realignment of Columbia Boulevard intersection to align with Corman Drive,
2. Dualization of Columbia Boulevard approach and departure to create separate intersections on Dale Drive, and
3. Construction of a roundabout intersection to serve Dale Drive, Corman Drive, Columbia Boulevard, and Woodland Drive (north leg)

It is anticipated that this project will continue to Facility Planning Phase 2 and 35 percent design, and as a result, this project will require a Mandatory Referral, which is expected to occur following a Fall/Winter 2019 Public meeting for the 35% design. There has been significant public outreach as part of this project, including a field walk in September 2018, a community survey, and a community meeting held in November 2018.



Montgomery Planning

Functional Planning & Policy Division

05/09/19
Agenda item 04



Dale Drive Pedestrian Facility Improvement Project

Briefing by Montgomery County
Department of Transportation



Briefing Agenda

- Background
- MCDOT Presentation
- Preliminary Staff Comments
- Public Comments Received by Planning Board
- Planning Board Discussion

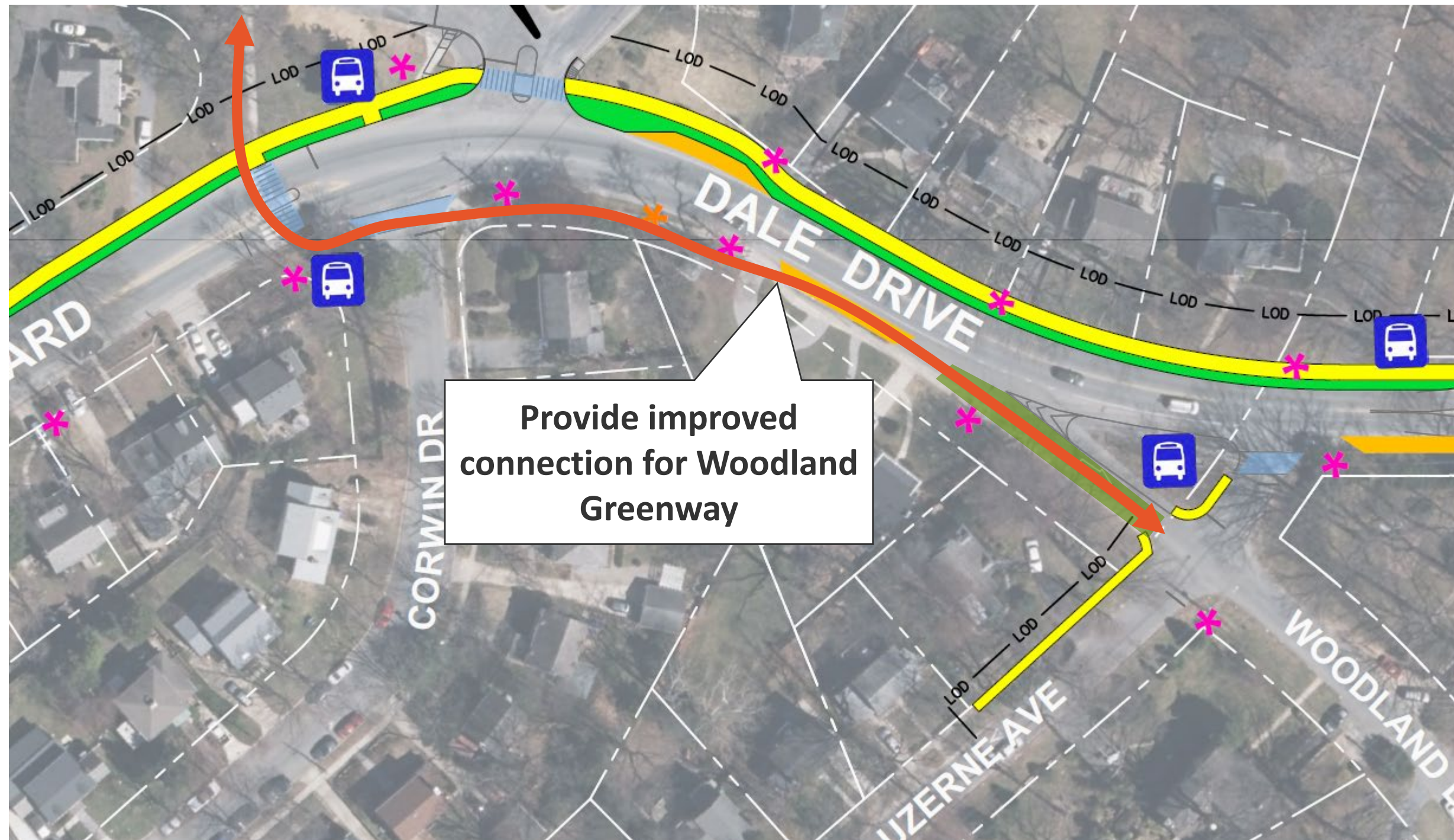
Background

- Dale Drive Safety Coalition – support for Dale Drive to be reclassified from an arterial to a minor arterial in the Master Plan of Highways and Transitways – strong public presence/comments at Planning Board meetings
- MCDOT initiated Facility Planning Study. Planning staff involved in this effort
- Coordination with ongoing Forest Glen/ Montgomery Hills Sector Plan
- Project funded in the CIP under Facility Planning – Transportation (P509337) through 35% design
- Mandatory Referral anticipated this Winter (February 2020)

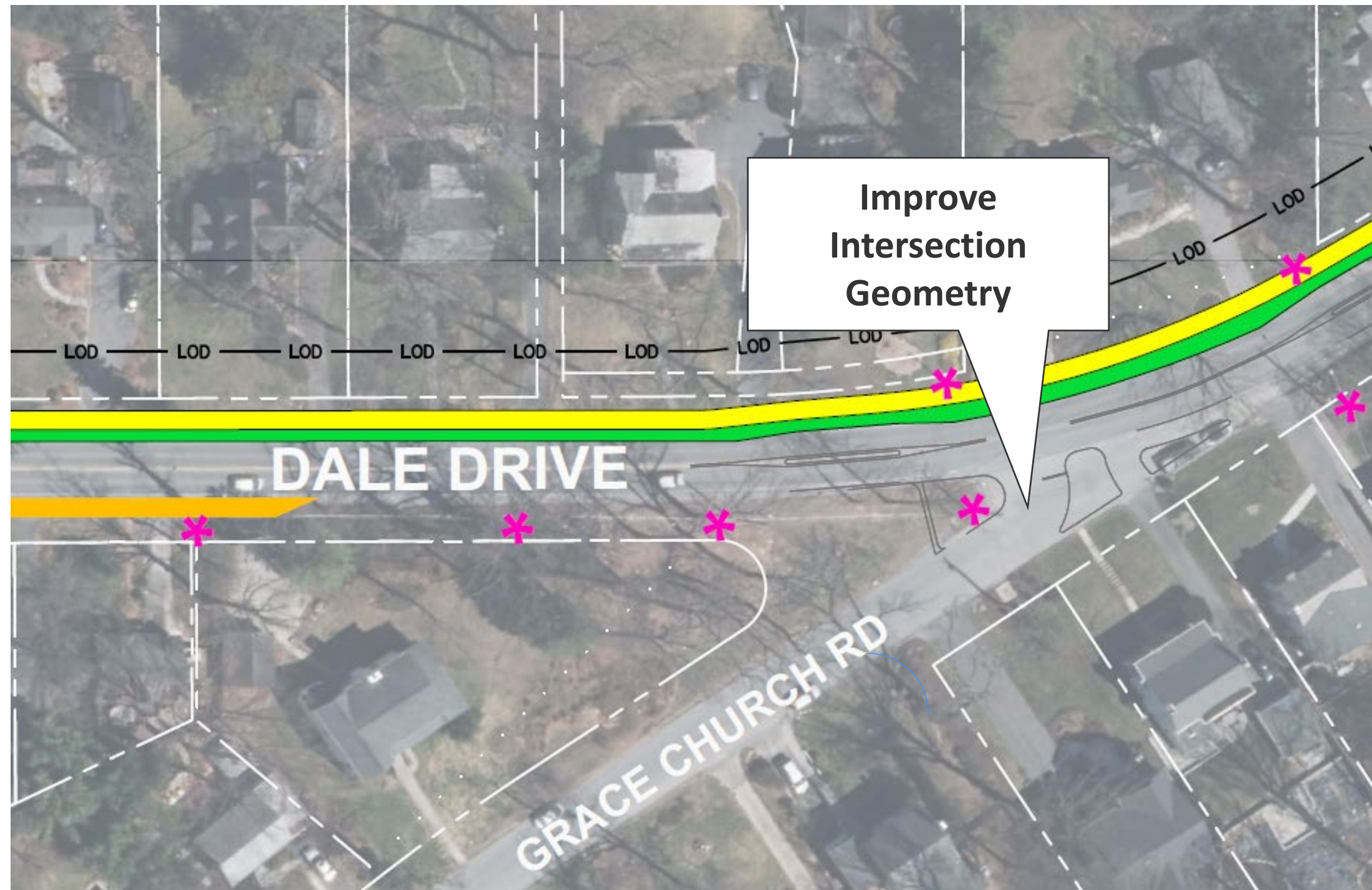
Preliminary Staff Comments

- Preferred corridor concept – sidepath on the north side
- 8' sidepath width acceptable given constraints (built environment, topography)
- Preferred intersection concept – realignment
- Desire for more crosswalks along Dale Drive
- Potential closure of one block of Woodland Drive and replacement with separated bike lanes or sidepath between Corman Drive and Luzerne Avenue
- Potential tighter realignment of Grace Church Road at Dale Drive

Dale Drive at Woodland/Luzerne



Dale Drive at Grace Church Road



Public Comments

- Written comments submitted to Chair's Office



Montgomery Planning

Functional Planning & Policy Division

05/09/19

Agenda item 04



Dale Drive Pedestrian Facility Improvement Project

Briefing by Montgomery County
Department of Transportation

