

DALE DRIVE PEDESTRIAN FACILITY IMPROVEMENT PROJECT

PUBLIC MEETING

FEBRUARY 26, 2020



February 2020
Public Meeting



MC DOT



Outline

- Project Overview
- Project Schedule
- Design Considerations
- Preliminary Design
- Q&A





Meeting Outcomes

- Share the 35% design with the community
- Receive comments on current 35% design
- Answer questions from the community



Project Overview

Pedestrian Facility on Dale Drive

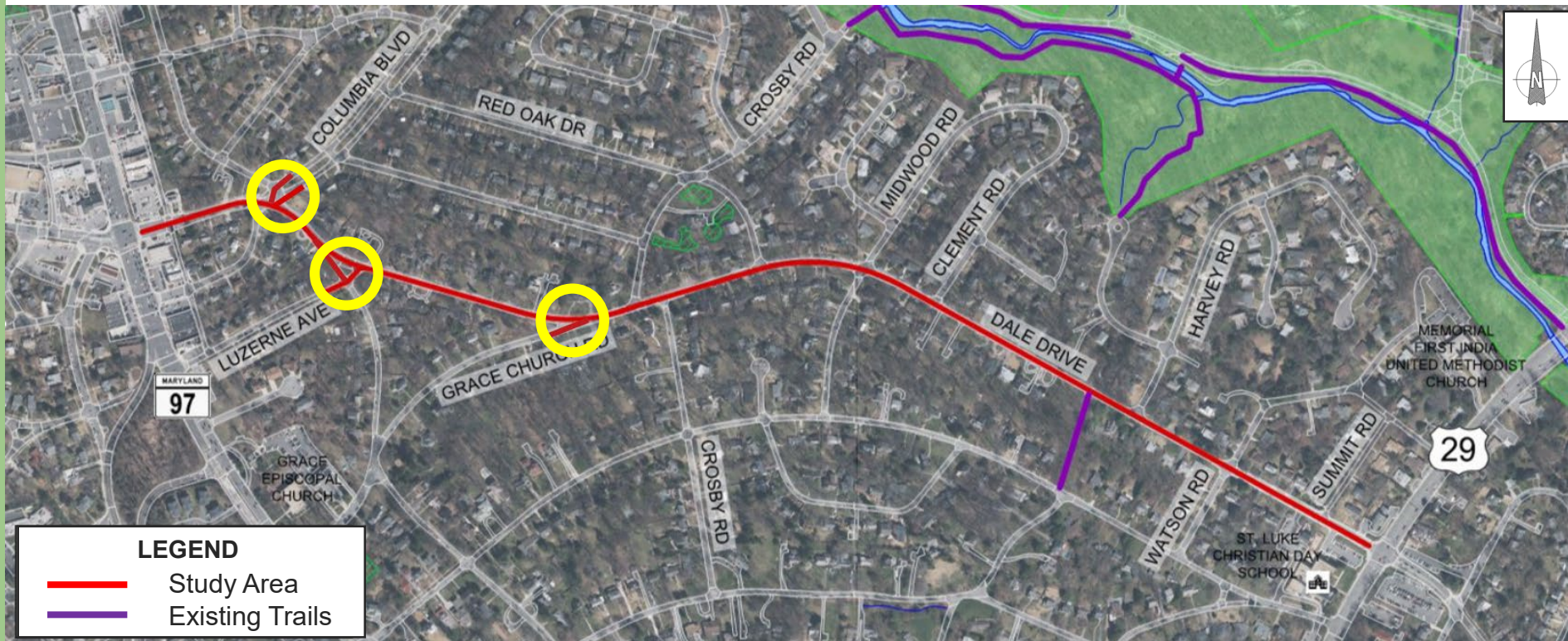
Georgia Avenue to Colesville Road



Project Overview

Proposed Intersection Improvements

Columbia Boulevard, Luzerne Avenue, Grace Church Road



Life of a Transportation Project

1 FACILITY PLANNING PHASE I

- Collect Data
- Obtain Public Input
- Develop Concept Plans
- Evaluate and Select Preferred Alignment / Typical Section
- Obtain Approvals From:
 - Director
 - County Council T & E Committee

We Are Here

2 FACILITY PLANNING PHASE II

- Develop Preliminary Contract Documents (35% Level of Completion)
 - Design Plans
 - Cost Estimates
 - Project Schedule
- Submit to County Executive and County Council for:
 - Final Design Decisions
 - Construction Funding in Capital Improvement Program (CIP)

3 FINAL DESIGN & CONSTRUCTION

- If approved for full funding and included in CIP, final design will be completed and project will be constructed.



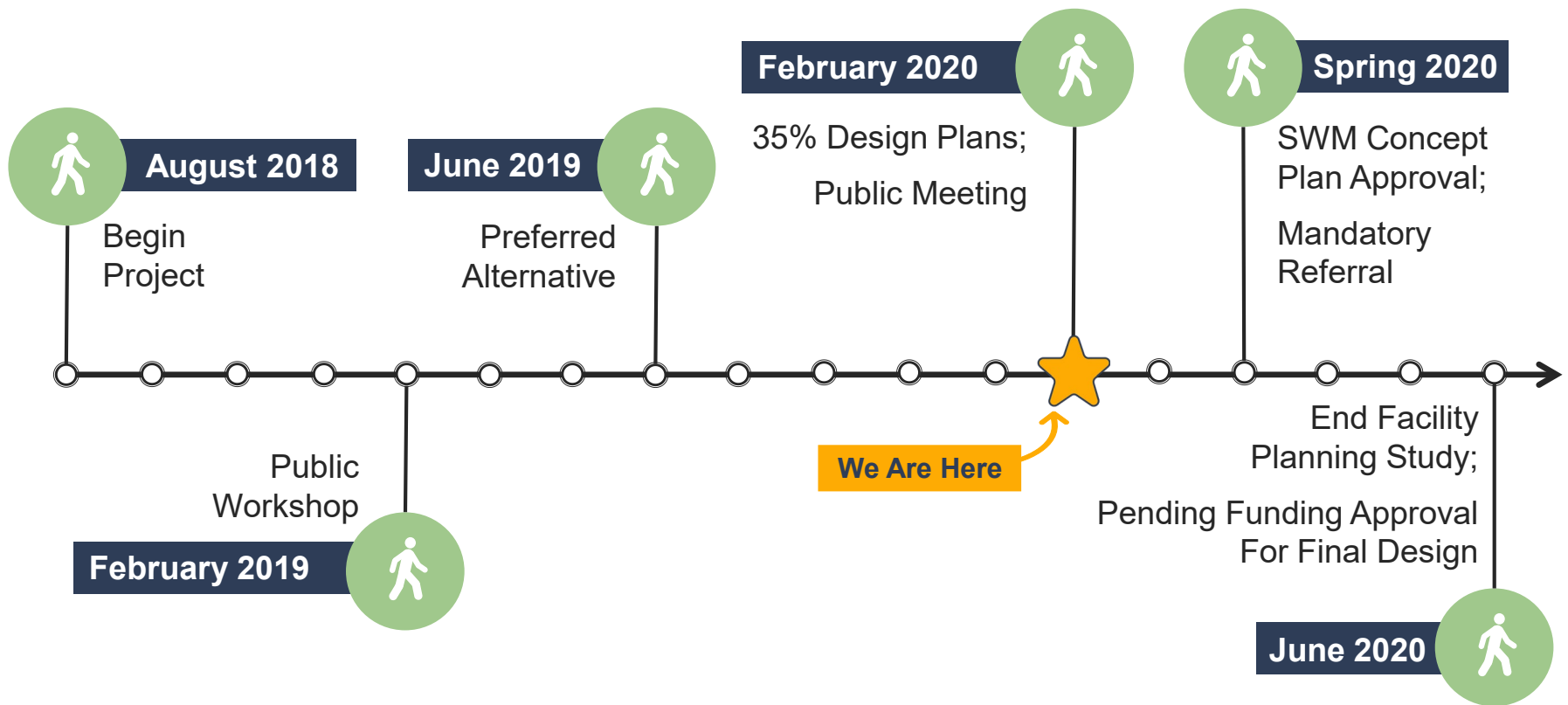
Since The Last Meeting...

- Collected over 140 comments on preferred alternative via online, write-in comment cards, and emails
- Briefed Planning Board on alternative analysis and community feedback
 - Recommended Shared Use Path on North Side
- Briefed the County's T&E Committee on alternative analysis and community feedback
 - Selected Shared Use Path on North Side as the preferred alternative towards 35% design
- Developed 35% design plans



Project Schedule

Current Project Milestone Schedule





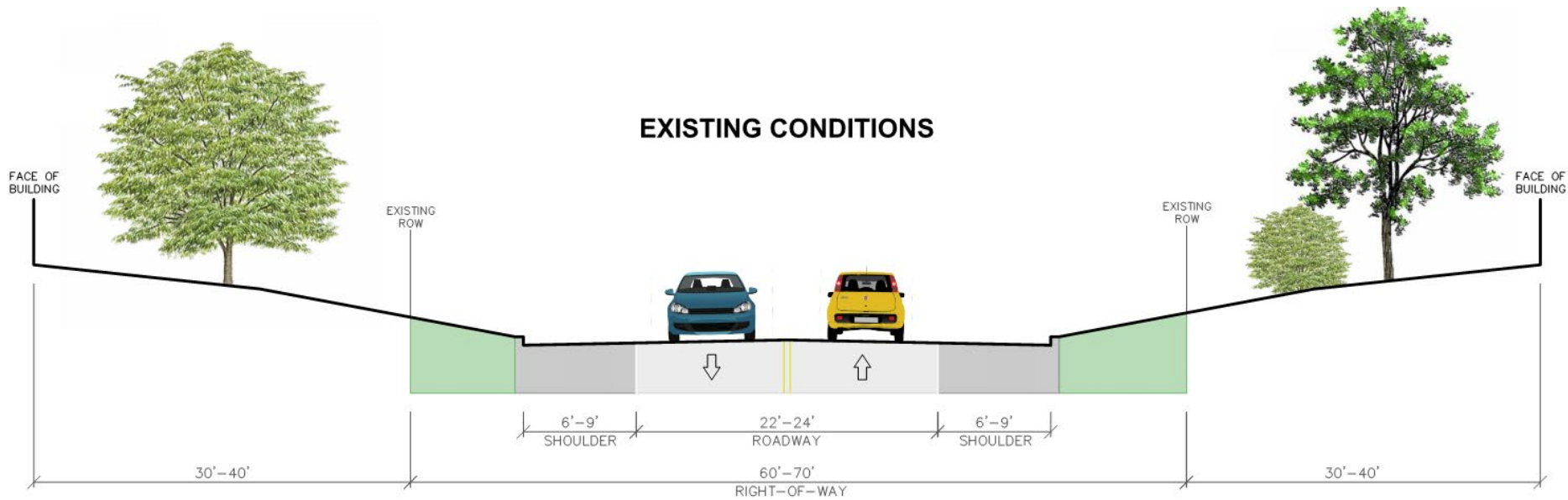
Design Considerations

- Provide a safe pedestrian facility and crossings
- Connectivity to existing trails and sidewalks
- Minimize impacts
 - Residential frontage
 - Environmental resources
 - Utilities
- Maintain existing neighborhood aesthetics
- Ensure a permittable project
- Provide proper drainage and stormwater management
- Consider existing bus/school bus stop locations



Typical Sections

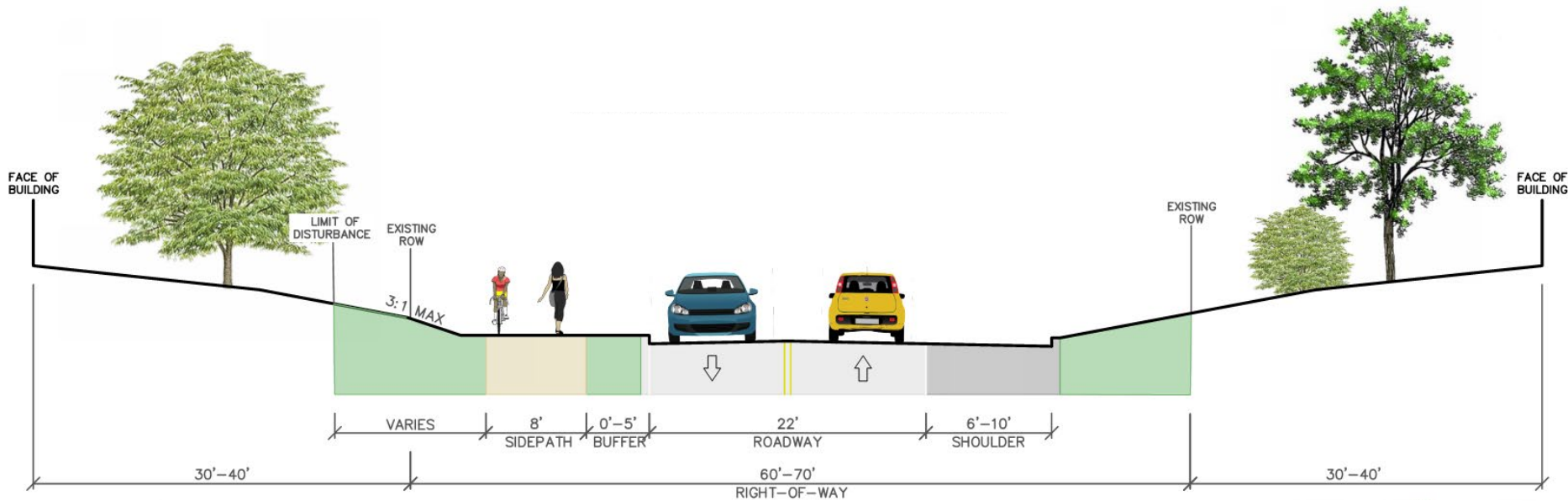
Existing Typical Section



Typical Sections: Preferred Alternative

Georgia Ave to Colesville Rd

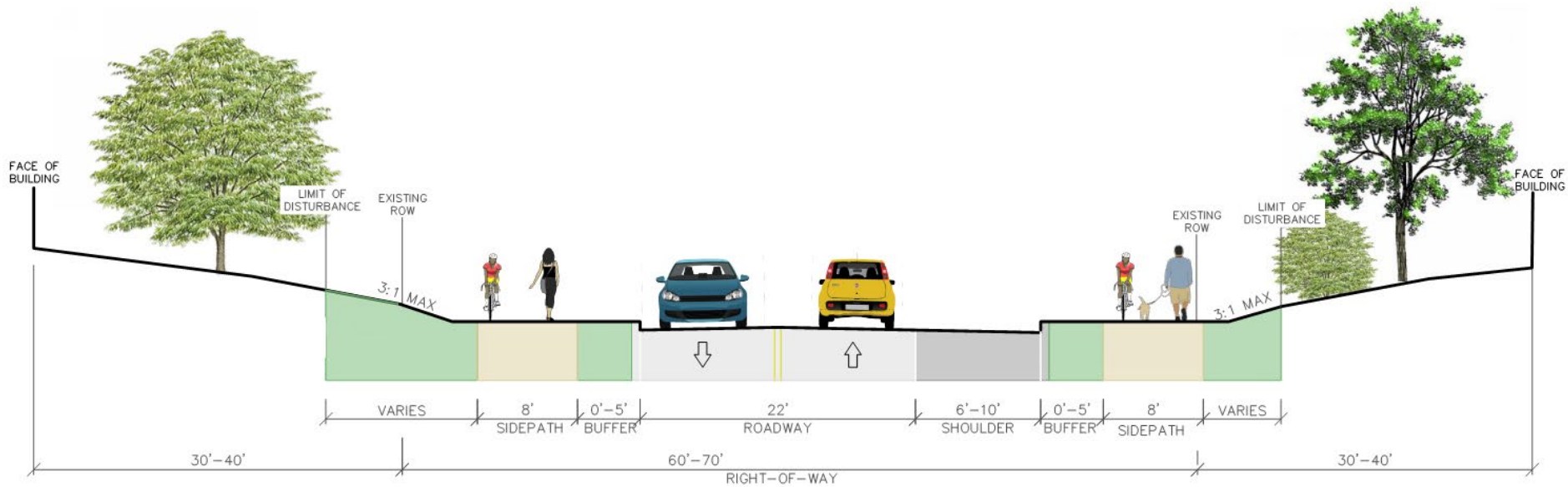
Proposed 8' Sidepath: North Side



Typical Sections: Preferred Alternative

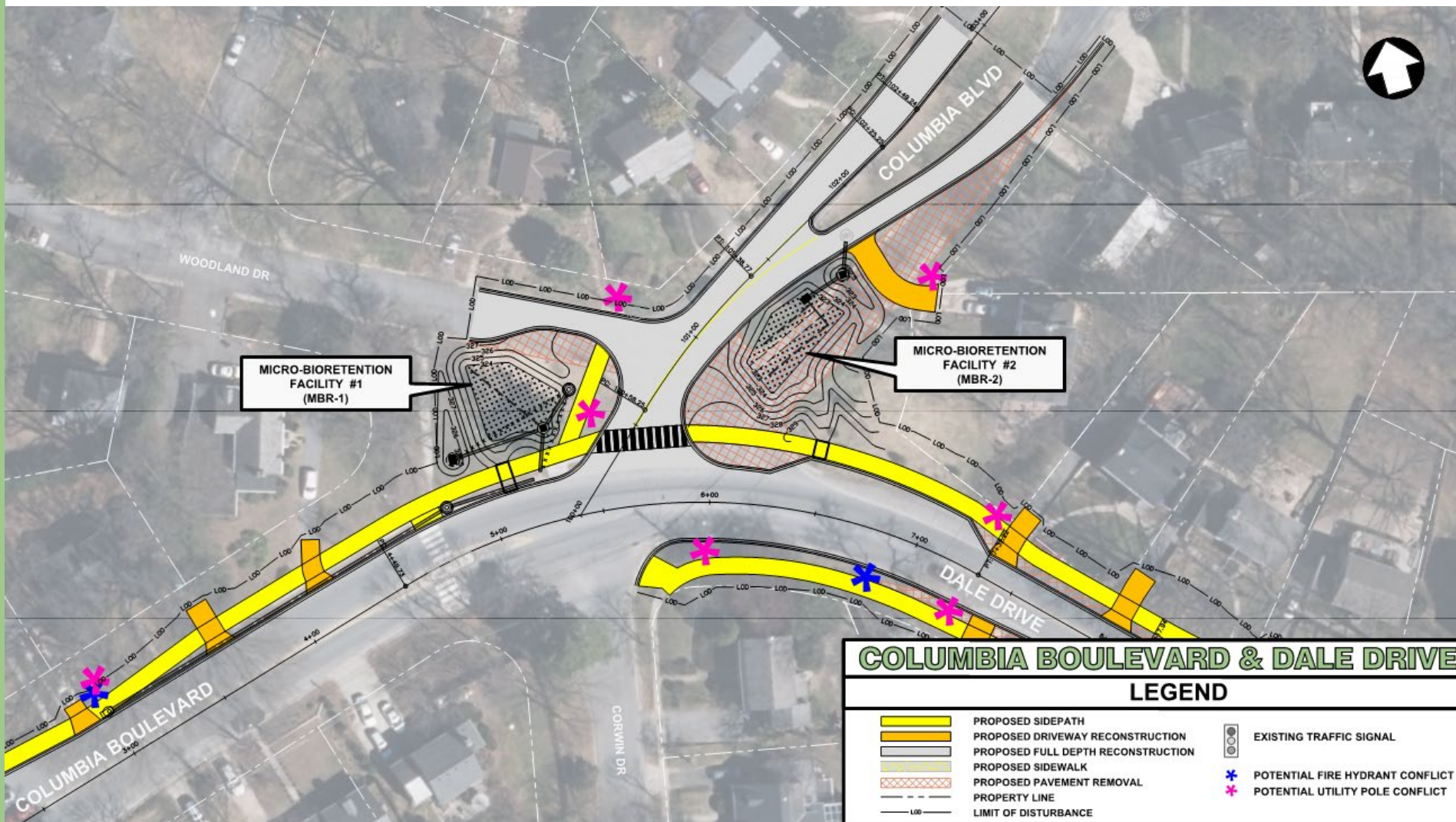
Corwin Drive to Luzerne Ave Only

Proposed 8' Sidepath: North and South Side



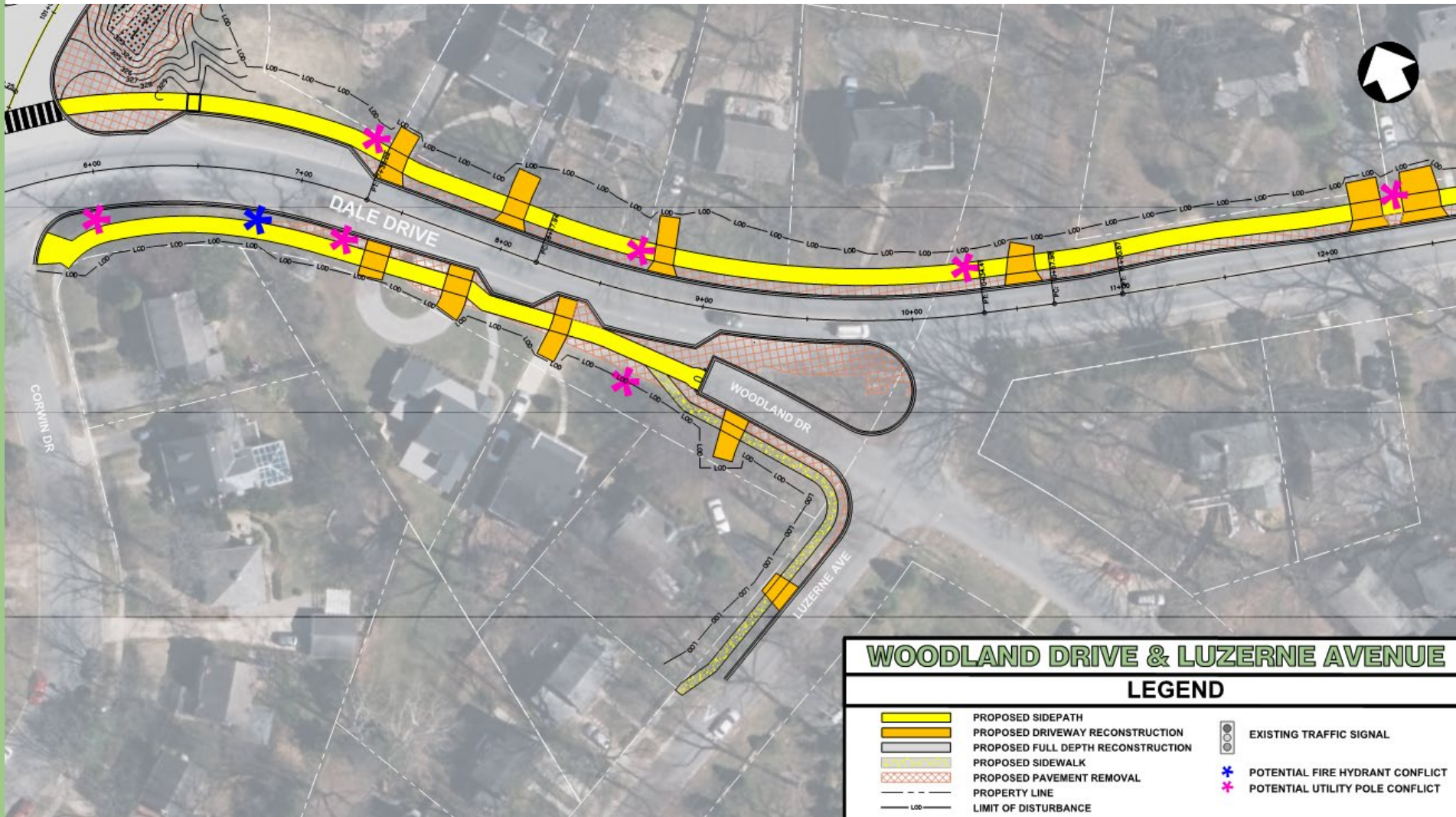
Intersection Improvements

Columbia Boulevard



Intersection Improvements

Luzerne Avenue



WOODLAND DRIVE & LUZERNE AVENUE

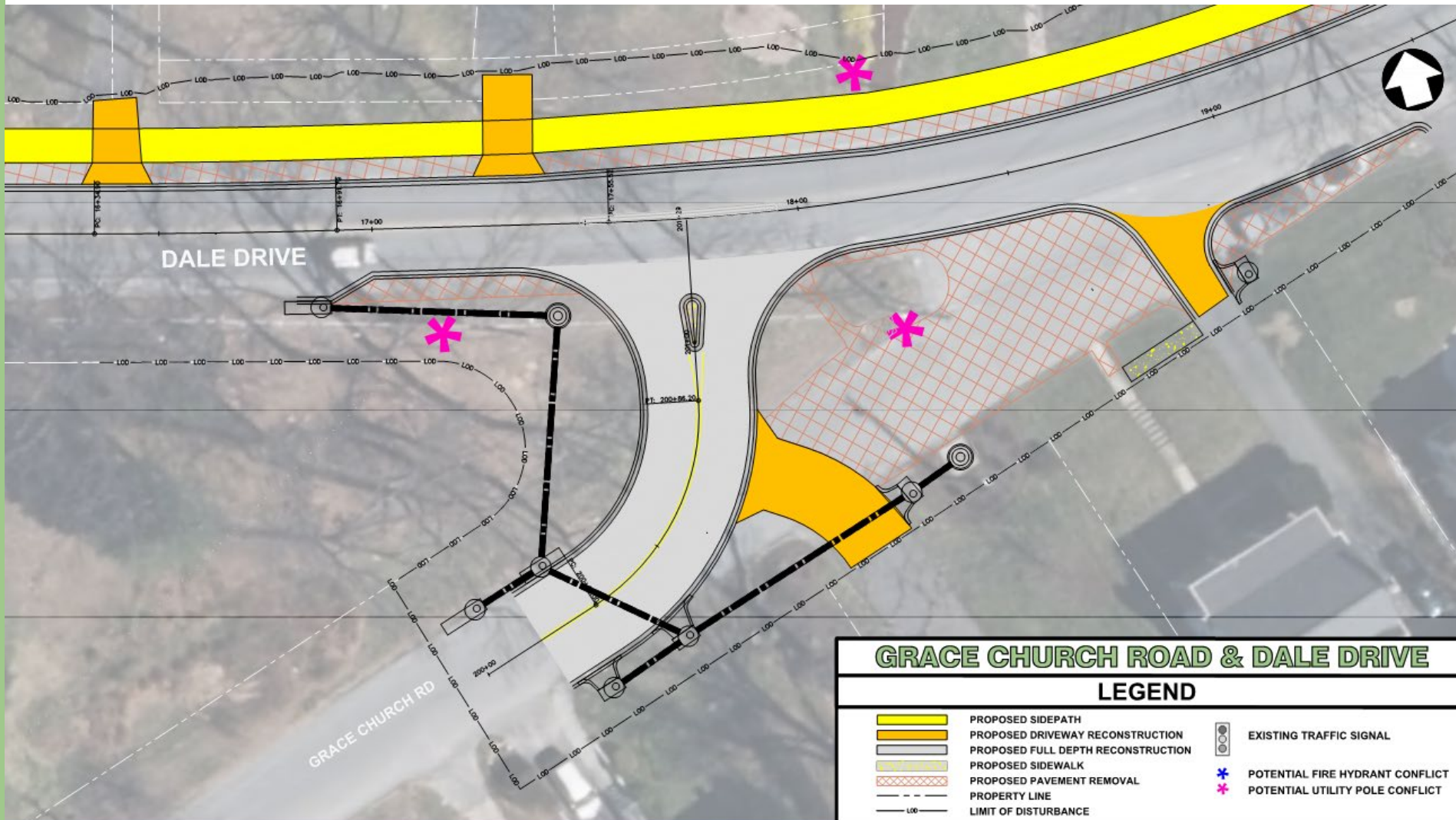
LEGEND

	PROPOSED SIDEPATH		EXISTING TRAFFIC SIGNAL
	PROPOSED DRIVEWAY RECONSTRUCTION		POTENTIAL FIRE HYDRANT CONFLICT
	PROPOSED FULL DEPTH RECONSTRUCTION		POTENTIAL UTILITY POLE CONFLICT
	PROPOSED SIDEWALK		
	PROPOSED PAVEMENT REMOVAL		
	PROPERTY LINE		
	LIMIT OF DISTURBANCE		



Intersection Improvements

Grace Church Road



Frequently Asked Questions (FAQ's)

- I have some comments about the short-term improvements and traffic-related issues. Who should I talk to?
- Are you cutting down any trees? What about the landscaping in front of my house?
- It seems like my property might be impacted from this project. What is going to happen next?
- Is this project going to be built soon?
- I have some comments and suggestions about the long-term improvements on Dale Drive. How do I make sure that my voice is heard?





Next Steps

- Collect additional comments from the community
- Mandatory Referral Review with M-NCPPC
- Documentation on findings and recommendations for next phase of design
- Pending funding approval from the County Council for final design and construction





Contact



Angel Cheng, P.E.
Project Manager



240-777-7274



angel.cheng@
montgomerycountymd.gov



<https://www.montgomerycountymd.gov/dot-dte/projects/daledr/index.html>



Concerns about traffic operations:
TrafficOps@montgomerycounty.gov





Questions?

