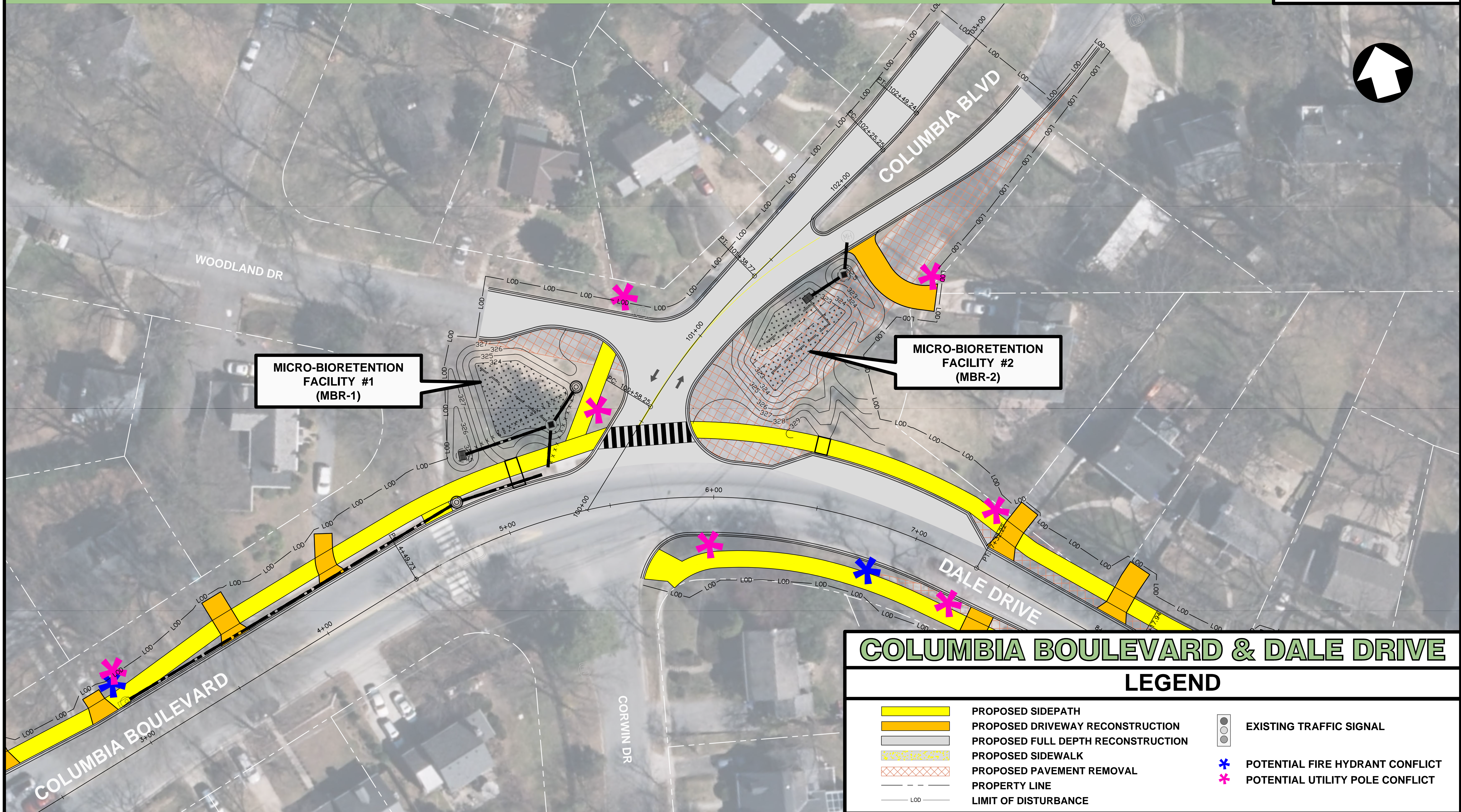


DALE DRIVE PEDESTRIAN FACILITY: PRELIMINARY DESIGN

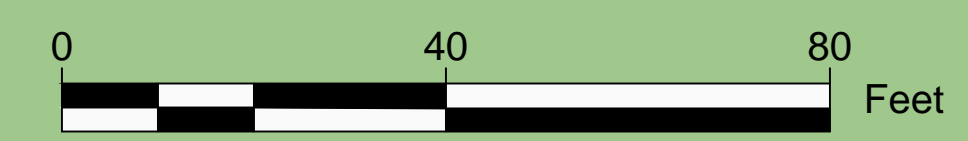
1



COLUMBIA BOULEVARD & DALE DRIVE

LEGEND

	PROPOSED SIDEPATH		EXISTING TRAFFIC SIGNAL
	PROPOSED DRIVEWAY RECONSTRUCTION		POTENTIAL FIRE HYDRANT CONFLICT
	PROPOSED FULL DEPTH RECONSTRUCTION		POTENTIAL UTILITY POLE CONFLICT
	PROPOSED SIDEWALK		
	PROPOSED PAVEMENT REMOVAL		
	PROPERTY LINE		
	LIMIT OF DISTURBANCE		



FEBRUARY 2020