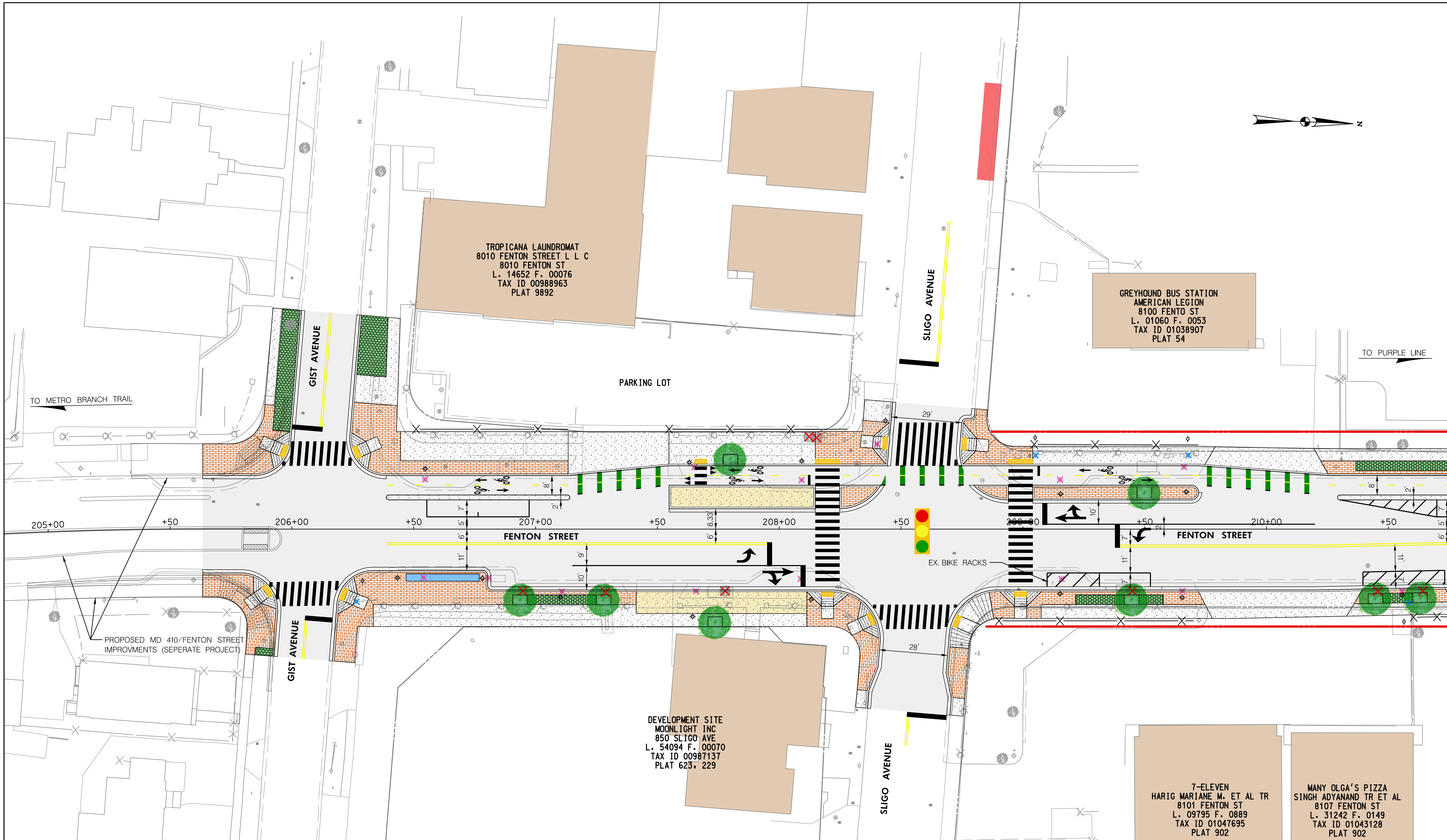
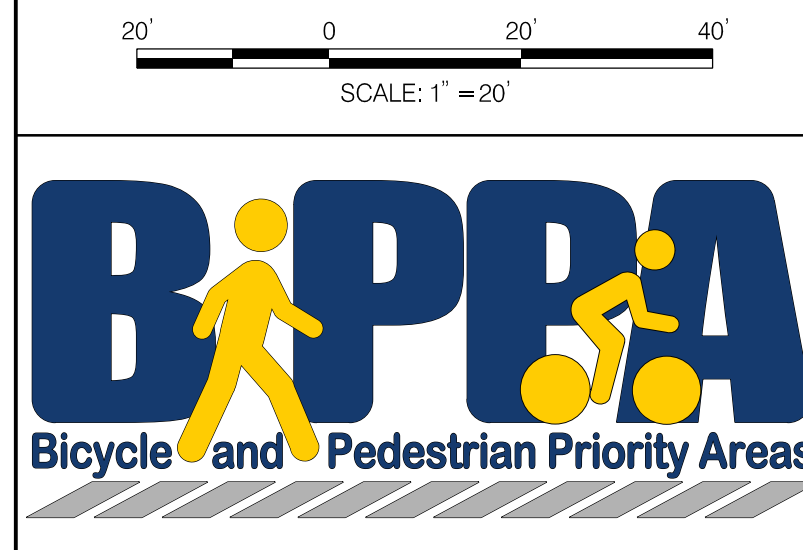


Wednesday, November 11, 2020 AT 10:11 AM
 U:\202601401\24 BPPA - Fenton Street\700 CADD\700 Sheet\pHD-PB441-FentonStreet.dgn



MATCH LINE STA 210+75 - SEE SHEET PS-02

PS-01



LEGEND	
	PROP. DETECTABLE WARNING SURFACE
	PROP. ASPHALT PAVEMENT
	PROP. CONCRETE
	PROP. BRICK PAVERS
	PROP. SWM/BMP
	PROP. CAFE SEATING
	PROP. BUS STOP
	CAPITAL BIKE SHARE
	BUILDING
	PROP. GEOMETRY
	EX. GEOMETRY
	PROP. RIGHT OF WAY LINE
	EX. RIGHT OF WAY LINE
	PROP. FENCE
	EX. FENCE
	PROP. STREET LIGHT
	EX. STREET LIGHT TO BE REMOVED
	EX. STREET LIGHT TO REMAIN
	PROP. UTILITY POLE
	EX. UTILITY POLE TO BE REMOVED
	EX. UTILITY POLE TO REMIAN
	PROP. STREET TREE
	EX. STREET TREE TO BE REMOVED
	EX. STREET TREE TO REMAIN
	PROP. FIRE HYDRANT
	EX. FIRE HYDRANT TO BE REMOVED
	EX. FIRE HYDRANT TO REMIAN
	EX. GAS VALVE
	EX. SANITARY SEWER MANHOLE
	EX. TELECOM MANHOLE
	EX. ELECTRIC MAN HOLE
	EX. WATER VALVE
	EX. STORM DRAIN MANHOLE
	PROP. HAWK SIGNAL (BY OTHERS)
	AM LOADING ZONE
	PROP. PURPLE LINE
	EX. TRAFFIC SIGNAL

DEPARTMENT OF TRANSPORTATION
 DIVISION OF TRANSPORTATION ENGINEERING
 MONTGOMERY COUNTY, MARYLAND

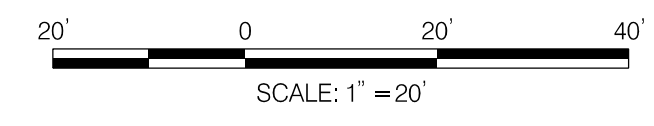
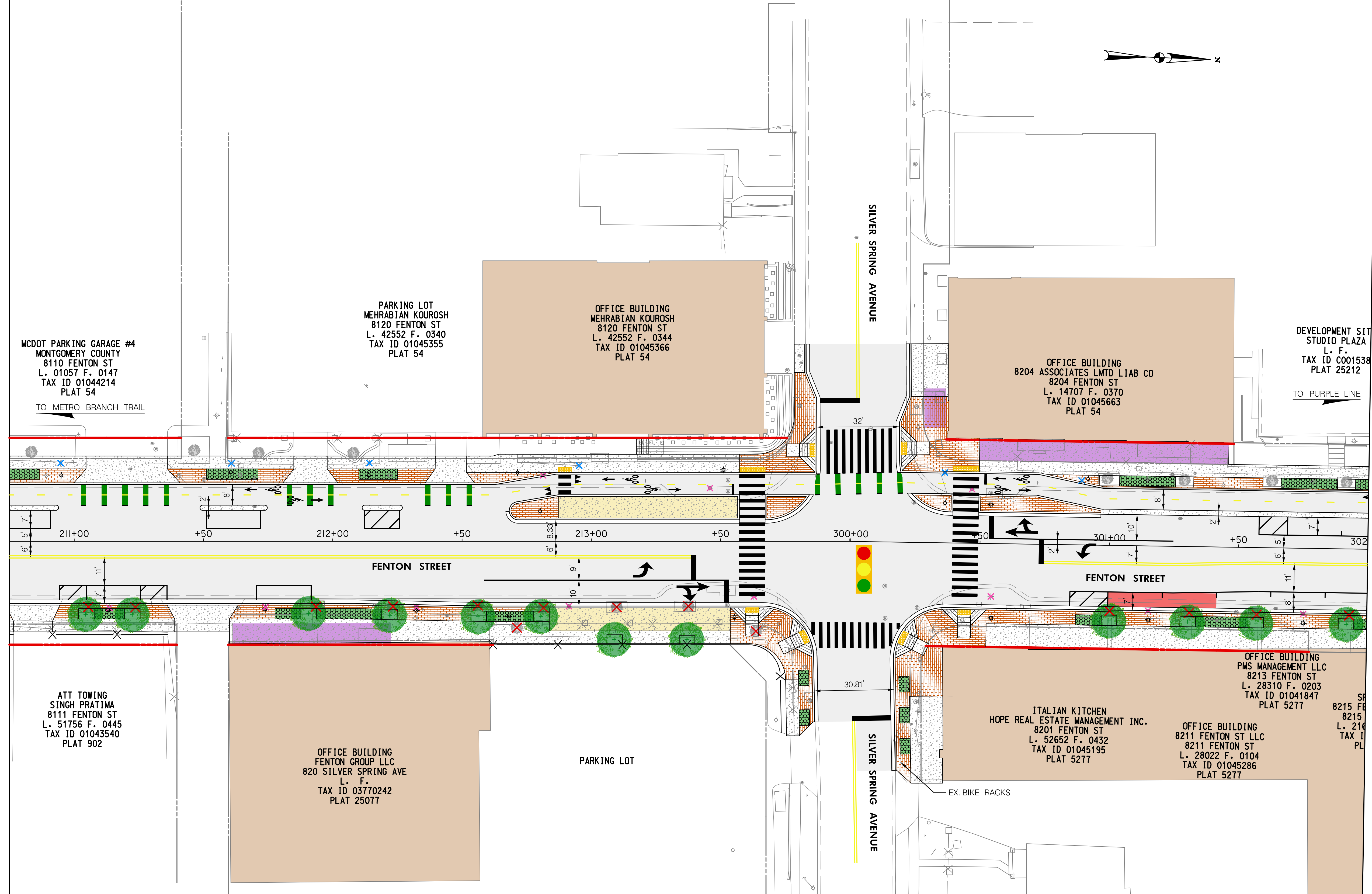
FENTON STREET BIKEWAY STUDY
 ALTERNATIVE B

Wednesday, November 11, 2020 AT 10:11 AM
 U:\2026011401\24 BPPA - Fenton Street\700 CADD\700 Sheet\pHD-PB4A2_FentonStreet.dgn



MATCH LINE STA. 210+75 - SEE SHEET PS-01

MATCH LINE STA. 302+00 - SEE SHEET PS-03



LEGEND	
	PROP. DETECTABLE WARNING SURFACE
	PROP. ASPHALT PAVEMENT
	PROP. CONCRETE
	PROP. BRICK PAVERS
	PROP. SWM/BMP
	PROP. CAFE SEATING
	PROP. BUS STOP
	CAPITAL BIKE SHARE
	BUILDING
	PROP. GEOMETRY
	EX. GEOMETRY
	PROP. RIGHT OF WAY LINE
	EX. RIGHT OF WAY LINE
	PROP. FENCE
	EX. FENCE
	PROP. STREET LIGHT
	EX. STREET LIGHT TO BE REMOVED
	EX. STREET LIGHT TO REMAIN
	PROP. UTILITY POLE
	EX. UTILITY POLE TO BE REMOVED
	EX. UTILITY POLE TO REMAIN
	PROP. STREET TREE
	EX. STREET TREE TO BE REMOVED
	EX. STREET TREE TO REMAIN
	PROP. FIRE HYDRANT
	EX. FIRE HYDRANT TO BE REMOVED
	EX. FIRE HYDRANT TO REMAIN
	EX. GAS VALVE
	EX. SANITARY SEWER MANHOLE
	EX. TELECOM MANHOLE
	EX. ELECTRIC MAN HOLE
	EX. WATER VALVE
	EX. STORM DRAIN MANHOLE
	PROP. HAWK SIGNAL (BY OTHERS)
	AM LOADING ZONE
	PROP. PURPLE LINE
	EX. TRAFFIC SIGNAL

DEPARTMENT OF TRANSPORTATION
 DIVISION OF TRANSPORTATION ENGINEERING
 MONTGOMERY COUNTY, MARYLAND

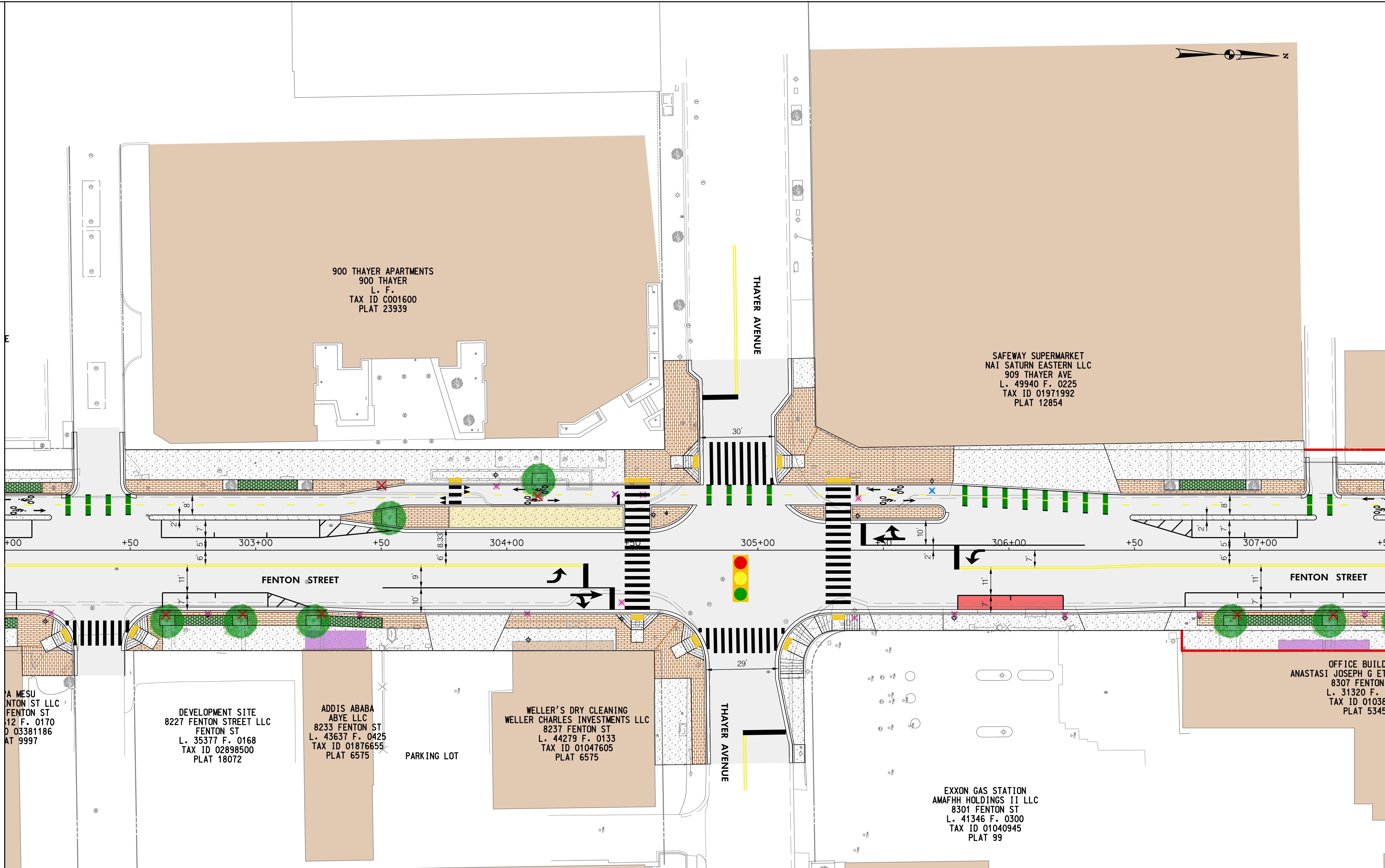
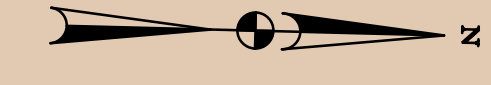
FENTON STREET BIKEWAY STUDY
 ALTERNATIVE B

PS-02

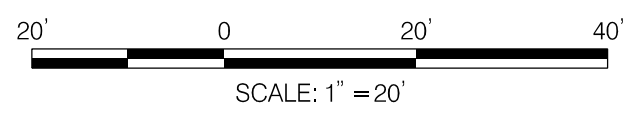
Wednesday, November 11, 2020 AT 10:11 AM
 U:\202601401\24 BPPA - Fenton Street\700 CADD\700 Sheet\p4D-PB4A3_FentonStreet.dgn

MATCH LINE STA. 302+00 - SEE SHEET PS-02

MATCH LINE STA. 307+50 - SEE SHEET PS-04



PS-03



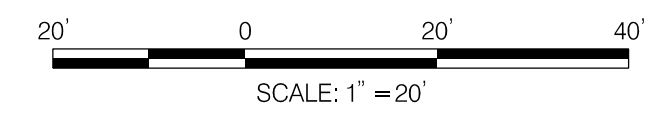
LEGEND	
	PROP. DETECTABLE WARNING SURFACE
	PROP. ASPHALT PAVEMENT
	PROP. CONCRETE
	PROP. BRICK PAVERS
	PROP. SWM/BMP
	PROP. CAFE SEATING
	PROP. BUS STOP
	CAPITAL BIKE SHARE
	BUILDING
	PROP. GEOMETRY
	EX. GEOMETRY
	PROP. RIGHT OF WAY LINE
	EX. RIGHT OF WAY LINE
	PROP. FENCE
	EX. FENCE
	PROP. STREET LIGHT
	EX. STREET LIGHT TO BE REMOVED
	EX. STREET LIGHT TO REMAIN
	PROP. UTILITY POLE
	EX. UTILITY POLE TO BE REMOVED
	EX. UTILITY POLE TO REMAIN
	PROP. STREET TREE
	EX. STREET TREE TO BE REMOVED
	EX. STREET TREE TO REMAIN
	PROP. FIRE HYDRANT
	EX. FIRE HYDRANT TO BE REMOVED
	EX. FIRE HYDRANT TO REMAIN
	EX. GAS VALVE
	EX. SANITARY SEWER MANHOLE
	EX. TELECOM MANHOLE
	EX. ELECTRIC MAN HOLE
	EX. WATER VALVE
	EX. STORM DRAIN MANHOLE
	PROP. HAWK SIGNAL (BY OTHERS)
	AM LOADING ZONE
	PROP. PURPLE LINE
	EX. TRAFFIC SIGNAL

DEPARTMENT OF TRANSPORTATION
 DIVISION OF TRANSPORTATION ENGINEERING
 MONTGOMERY COUNTY, MARYLAND

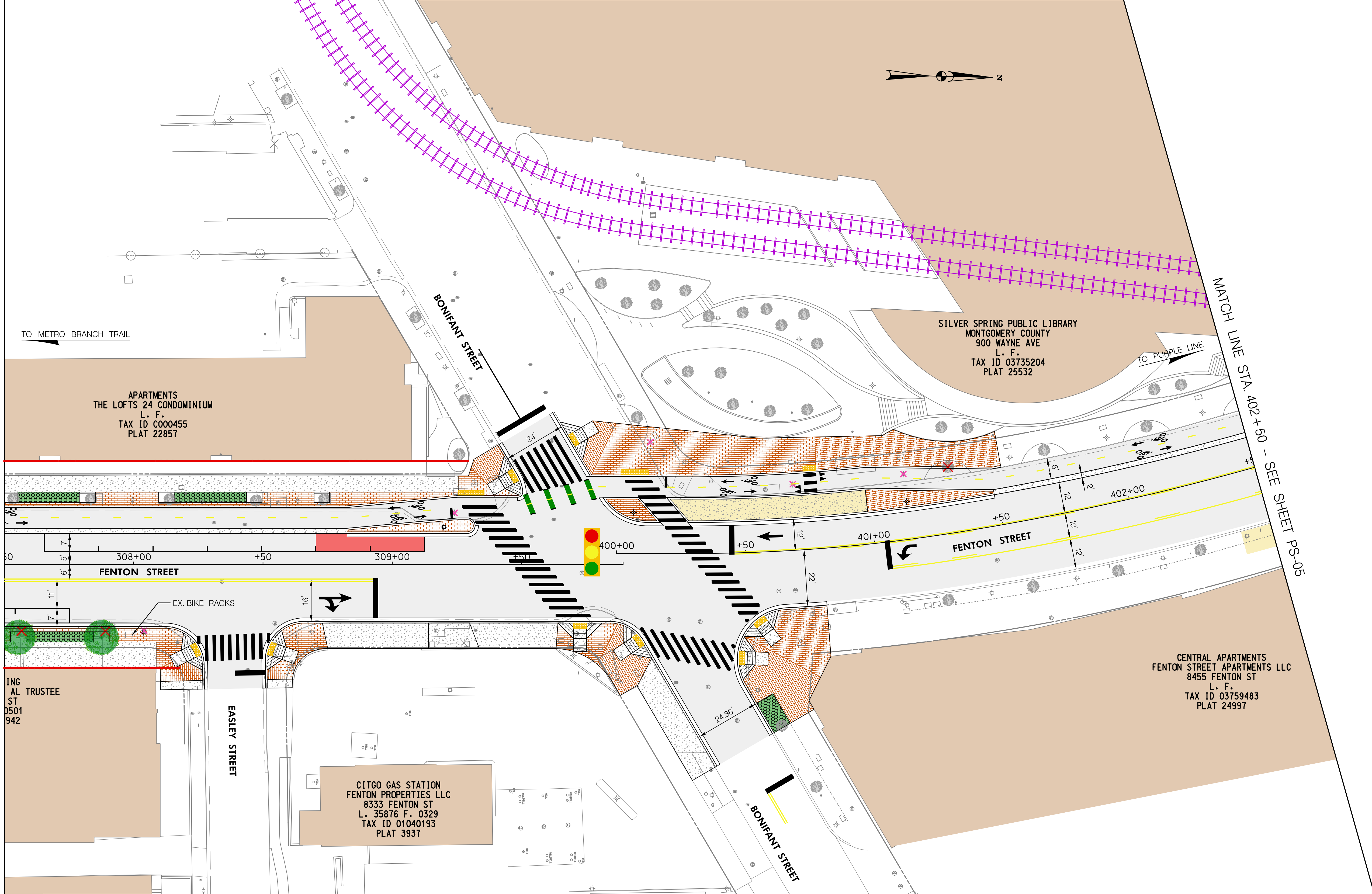
FENTON STREET BIKEWAY STUDY
 ALTERNATIVE B

SCALE: 1"=20' SHEET 03 of 08

Wednesday, November 11, 2020 AT 10:11 AM
 U:\2026011401\24 BPPA - Fenton Street\700 CADD\700 Sheet\pHD-PB444_FentonStreet.dgn



MATCH LINE STA. 307+50 - SEE SHEET PS-03



MATCH LINE STA. 402+50 - SEE SHEET PS-05

LEGEND	
	PROP. DETECTABLE WARNING SURFACE
	PROP. ASPHALT PAVEMENT
	PROP. CONCRETE
	PROP. BRICK PAVERS
	PROP. SWM/BMP
	PROP. CAFE SEATING
	PROP. BUS STOP
	CAPITAL BIKE SHARE
	BUILDING
	PROP. GEOMETRY
	EX. GEOMETRY
	PROP. RIGHT OF WAY LINE
	EX. RIGHT OF WAY LINE
	PROP. FENCE
	EX. FENCE
	PROP. STREET LIGHT
	PROP. STREET TREE
	EX. STREET LIGHT TO BE REMOVED
	EX. STREET LIGHT TO REMAIN
	PROP. UTILITY POLE
	EX. UTILITY POLE TO BE REMOVED
	EX. UTILITY POLE TO REMAIN
	EX. STREET TREE TO BE REMOVED
	EX. STREET TREE TO REMAIN
	PROP. FIRE HYDRANT
	EX. FIRE HYDRANT TO BE REMOVED
	EX. FIRE HYDRANT TO REMAIN
	EX. GAS VALVE
	EX. SANITARY SEWER MANHOLE
	EX. TELECOM MANHOLE
	EX. ELECTRIC MAN HOLE
	EX. WATER VALVE
	EX. STORM DRAIN MANHOLE
	PROP. HAWK SIGNAL (BY OTHERS)
	AM LOADING ZONE
	PROP. PURPLE LINE
	EX. TRAFFIC SIGNAL

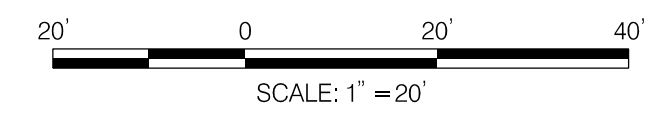
DEPARTMENT OF TRANSPORTATION
 DIVISION OF TRANSPORTATION ENGINEERING
 MONTGOMERY COUNTY, MARYLAND

FENTON STREET BIKEWAY STUDY
 ALTERNATIVE B

SCALE: 1"=20' SHEET 04 of 08

PS-04

Wednesday, November 11, 2020 AT 10:11 AM
 U:\2026011401\24 BPPA - Fenton Street\700 CADD\700 Sheet\pHD-PB4A5-FentonStreet.dgn



LEGEND		EX. STREET LIGHT TO BE REMOVED		EX. STREET TREE TO BE REMOVED		EX. ELECTRIC MAN HOLE		PROP. HAWK SIGNAL (BY OTHERS)	
	PROP. DETECTABLE WARNING SURFACE		EX. STREET LIGHT TO BE REMOVED		EX. STREET TREE TO BE REMOVED		EX. ELECTRIC MAN HOLE		PROP. HAWK SIGNAL (BY OTHERS)
	PROP. ASPHALT PAVEMENT		EX. STREET LIGHT TO REMAIN		EX. STREET TREE TO REMAIN		EX. WATER VALVE		AM LOADING ZONE
	PROP. CONCRETE		PROP. UTILITY POLE		PROP. FIRE HYDRANT		EX. STORM DRAIN MANHOLE		
	PROP. BRICK PAVERS		EX. UTILITY POLE TO BE REMOVED		EX. FIRE HYDRANT TO BE REMOVED				
	PROP. SWM/BMP		EX. UTILITY POLE TO REMIAN		EX. FIRE HYDRANT TO REMIAN				
	PROP. CAFE SEATING		PROP. STREET TREE		EX. GAS VALVE				
	PROP. BUS STOP				EX. SANITARY SEWER MANHOLE				
	CAPITAL BIKE SHARE				EX. TELECOM MANHOLE				
	BUILDING								
	PROP. GEOMETRY								
	EX. GEOMETRY								
	PROP. RIGHT OF WAY LINE								
	EX. RIGHT OF WAY LINE								
	PROP. FENCE								
	EX. FENCE								
	PROP. STREET LIGHT								

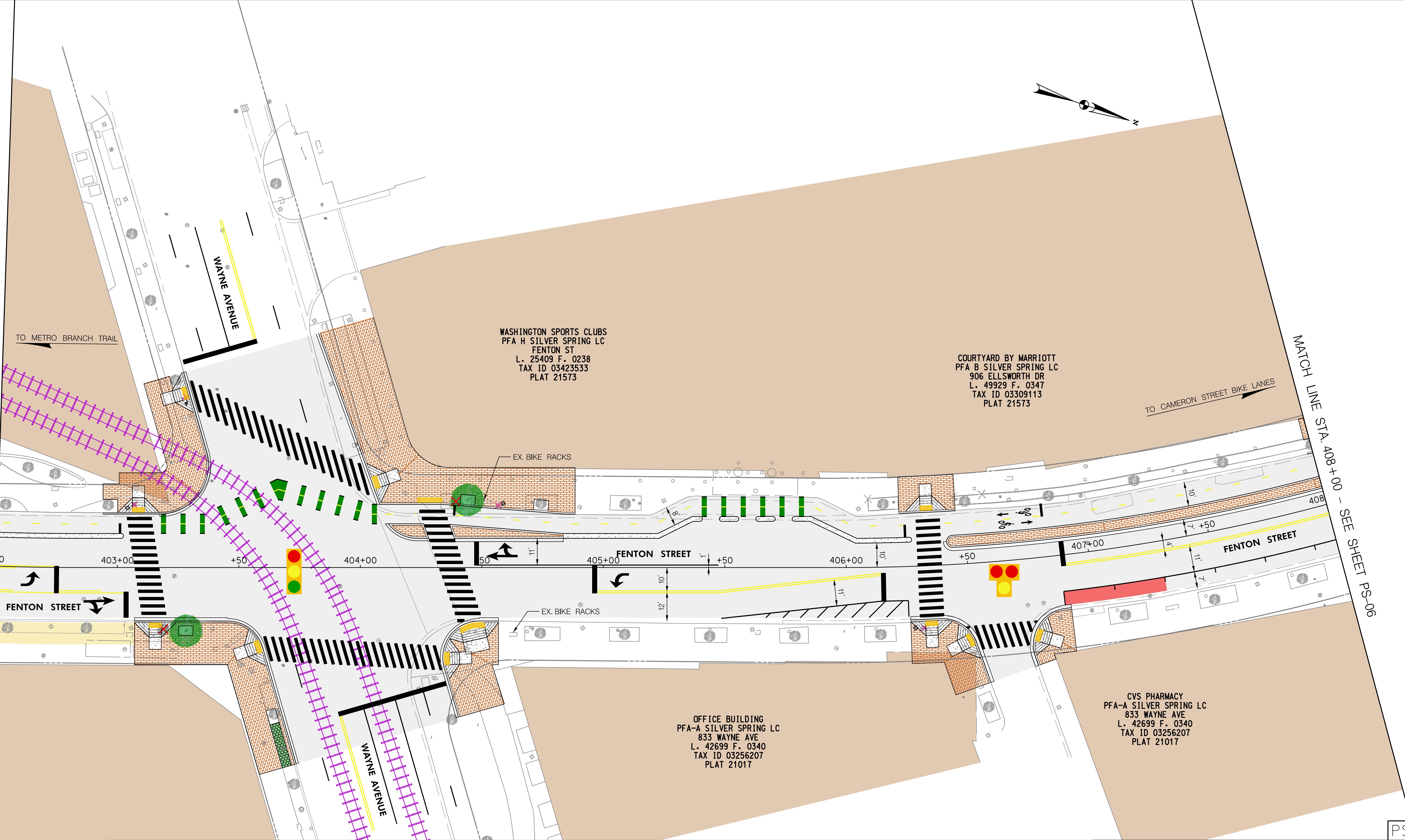
DEPARTMENT OF TRANSPORTATION
 DIVISION OF TRANSPORTATION ENGINEERING
 MONTGOMERY COUNTY, MARYLAND

FENTON STREET BIKEWAY STUDY
 ALTERNATIVE B

SCALE: 1"=20' SHEET 05 of 08

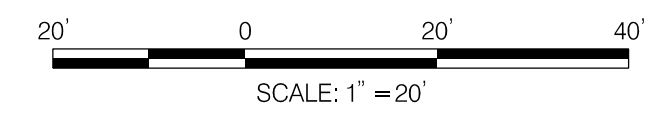
MATCH LINE STA. 402+50 - SEE SHEET PS-04

MATCH LINE STA. 408+00 - SEE SHEET PS-06



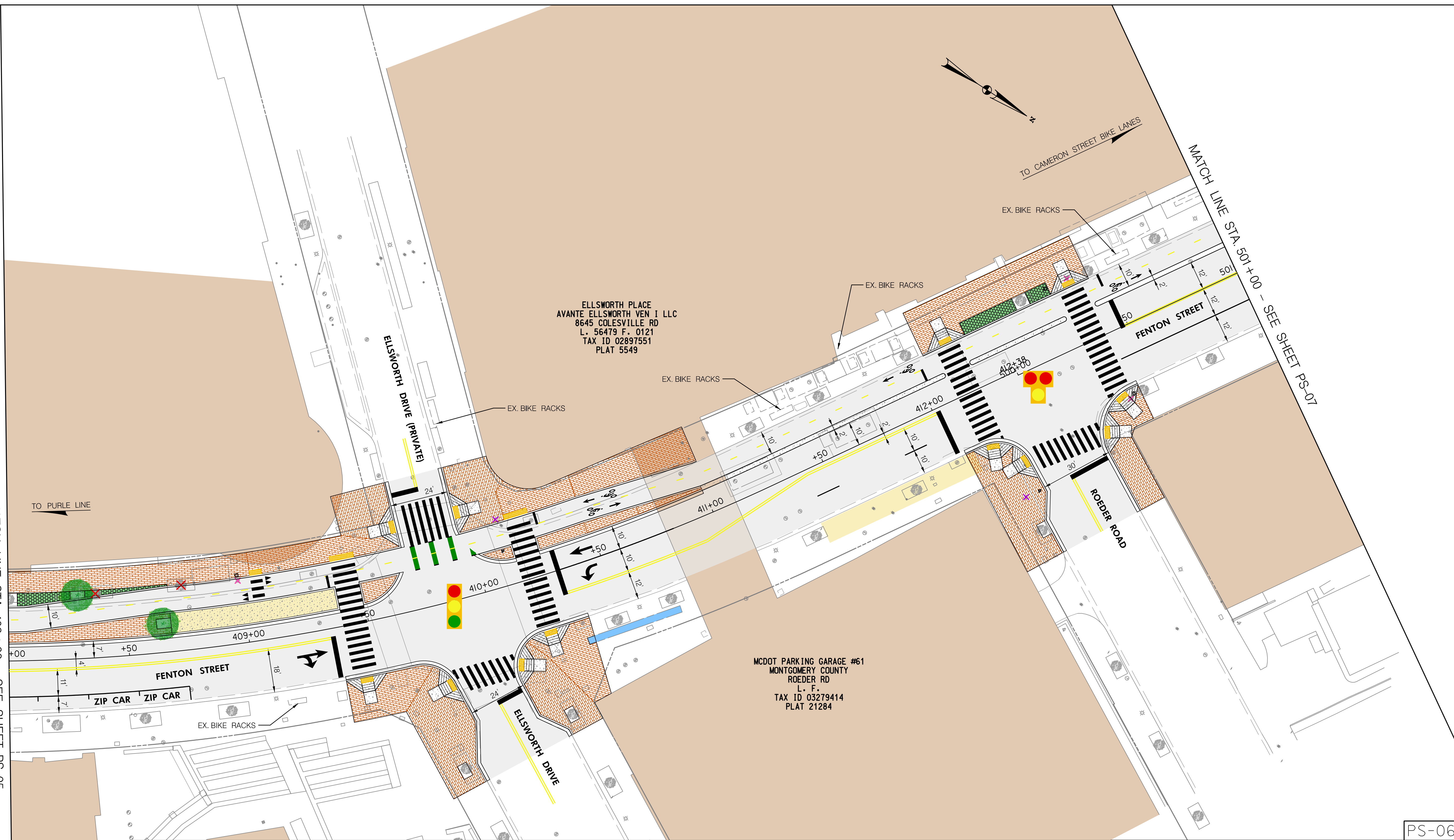
PS-05

Wednesday, November 11, 2020 AT 10:11 AM
 U:\202601401\24 BPPA - Fenton Street\700 CADD\700 Sheet\pHD-PB4A6-FentonStreet.dgn



MATCH LINE STA. 408+00 - SEE SHEET PS-05

MATCH LINE STA. 501+00 - SEE SHEET PS-07



ELLSWORTH PLACE
 AVANTE ELLSWORTH VEN I LLC
 8645 COLESVILLE RD
 L. F. 56479 F. 0121
 TAX ID 02897551
 PLAT 5549

MCDOT PARKING GARAGE #61
 MONTGOMERY COUNTY
 ROEDER RD
 L. F.
 TAX ID 03279414
 PLAT 21284

LEGEND	
	PROP. DETECTABLE WARNING SURFACE
	PROP. ASPHALT PAVEMENT
	PROP. CONCRETE
	PROP. BRICK PAVERS
	PROP. SWM/BMP
	PROP. CAFE SEATING
	PROP. BUS STOP
	CAPITAL BIKE SHARE
	BUILDING
	PROP. GEOMETRY
	EX. GEOMETRY
	PROP. RIGHT OF WAY LINE
	EX. RIGHT OF WAY LINE
	PROP. FENCE
	EX. FENCE
	PROP. STREET LIGHT
	EX. STREET LIGHT TO BE REMOVED
	EX. STREET LIGHT TO REMAIN
	PROP. UTILITY POLE
	EX. UTILITY POLE TO BE REMOVED
	EX. UTILITY POLE TO REMIAN
	PROP. STREET TREE
	EX. STREET TREE TO BE REMOVED
	EX. STREET TREE TO REMAIN
	PROP. FIRE HYDRANT
	EX. FIRE HYDRANT TO BE REMOVED
	EX. FIRE HYDRANT TO REMIAN
	EX. GAS VALVE
	EX. SANITARY SEWER MANHOLE
	EX. TELECOM MANHOLE
	EX. ELECTRIC MAN HOLE
	EX. WATER VALVE
	EX. STORM DRAIN MANHOLE
	PROP. HAWK SIGNAL (BY OTHERS)
	AM LOADING ZONE
	PROP. PURPLE LINE
	EX. TRAFFIC SIGNAL

DEPARTMENT OF TRANSPORTATION
 DIVISION OF TRANSPORTATION ENGINEERING
 MONTGOMERY COUNTY, MARYLAND

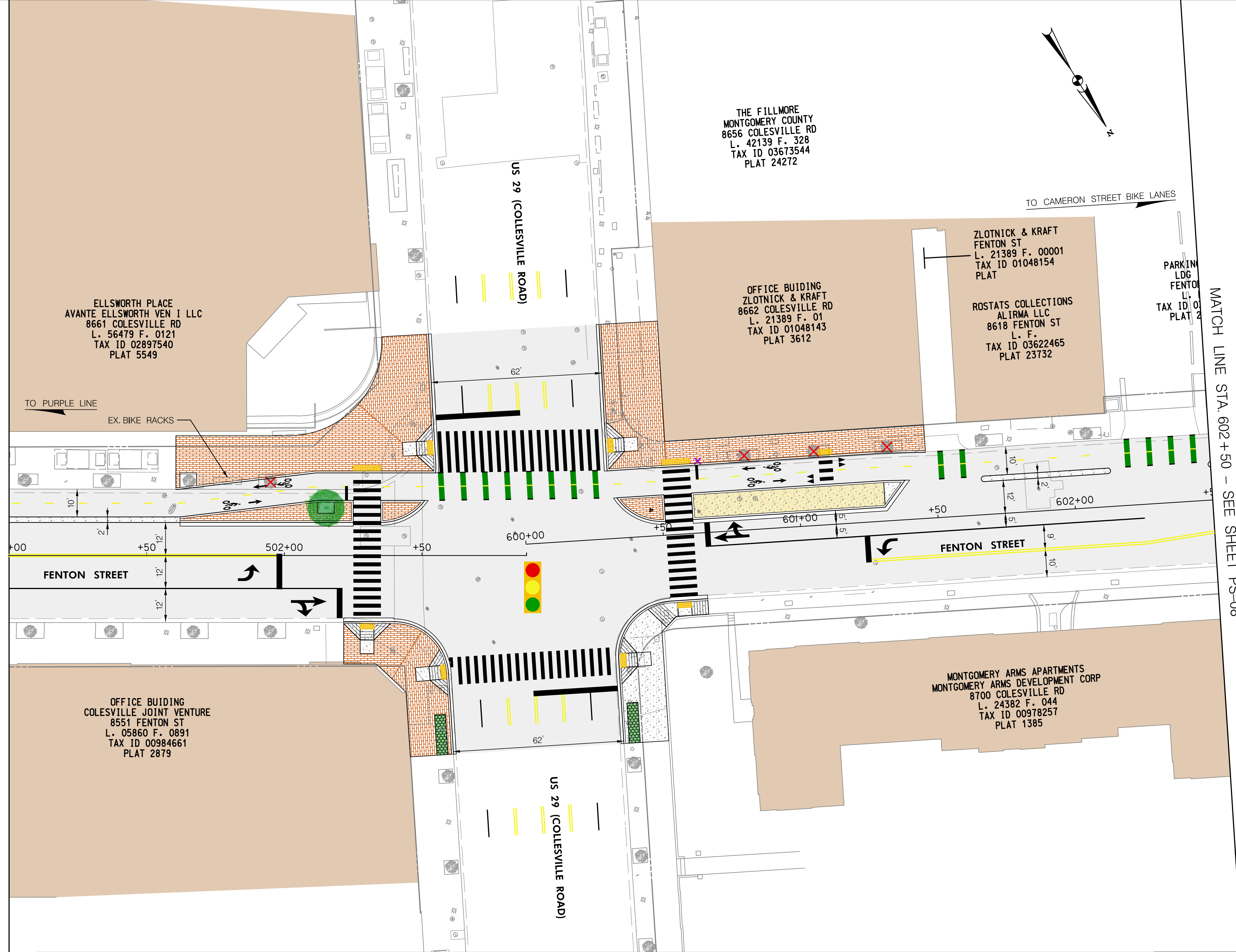
FENTON STREET BIKEWAY STUDY
 ALTERNATIVE B

PS-06

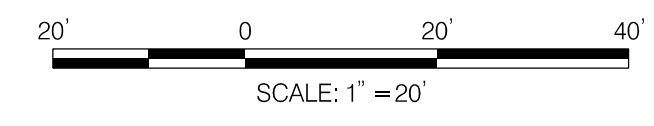
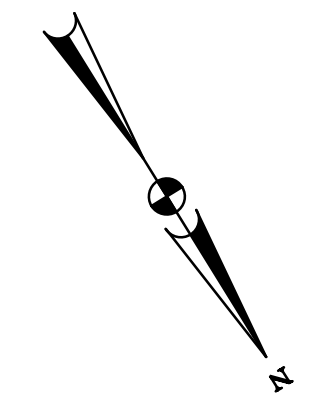
Wednesday, November 11, 2020 AT 10:12 AM
 U:\202601401\24 BPPA - Fenton Street\700 CADD\700 Sheet\pHD-PB4A7-FentonStreet.dgn



MATCH LINE STA. 501+00 - SEE SHEET PS-06



MATCH LINE STA. 602+50 - SEE SHEET PS-08



LEGEND	
	PROP. DETECTABLE WARNING SURFACE
	PROP. ASPHALT PAVEMENT
	PROP. CONCRETE
	PROP. BRICK PAVERS
	PROP. SWM/BMP
	PROP. CAFE SEATING
	PROP. BUS STOP
	CAPITAL BIKE SHARE
	BUILDING
	PROP. GEOMETRY
	EX. GEOMETRY
	PROP. RIGHT OF WAY LINE
	EX. RIGHT OF WAY LINE
	PROP. FENCE
	EX. FENCE
	PROP. STREET LIGHT
	EX. STREET LIGHT TO BE REMOVED
	EX. STREET LIGHT TO REMAIN
	PROP. UTILITY POLE
	EX. UTILITY POLE TO BE REMOVED
	EX. UTILITY POLE TO REMIAN
	PROP. STREET TREE
	EX. STREET TREE TO BE REMOVED
	EX. STREET TREE TO REMAIN
	PROP. FIRE HYDRANT
	EX. FIRE HYDRANT TO BE REMOVED
	EX. FIRE HYDRANT TO REMIAN
	EX. GAS VALVE
	EX. SANITARY SEWER MANHOLE
	EX. TELECOM MANHOLE
	EX. ELECTRIC MAN HOLE
	EX. WATER VALVE
	EX. STORM DRAIN MANHOLE
	PROP. HAWK SIGNAL (BY OTHERS)
	AM LOADING ZONE
	PROP. PURPLE LINE
	EX. TRAFFIC SIGNAL

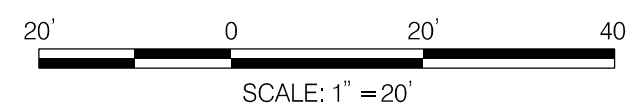
DEPARTMENT OF TRANSPORTATION
 DIVISION OF TRANSPORTATION ENGINEERING
 MONTGOMERY COUNTY, MARYLAND

FENTON STREET BIKEWAY STUDY
 ALTERNATIVE B

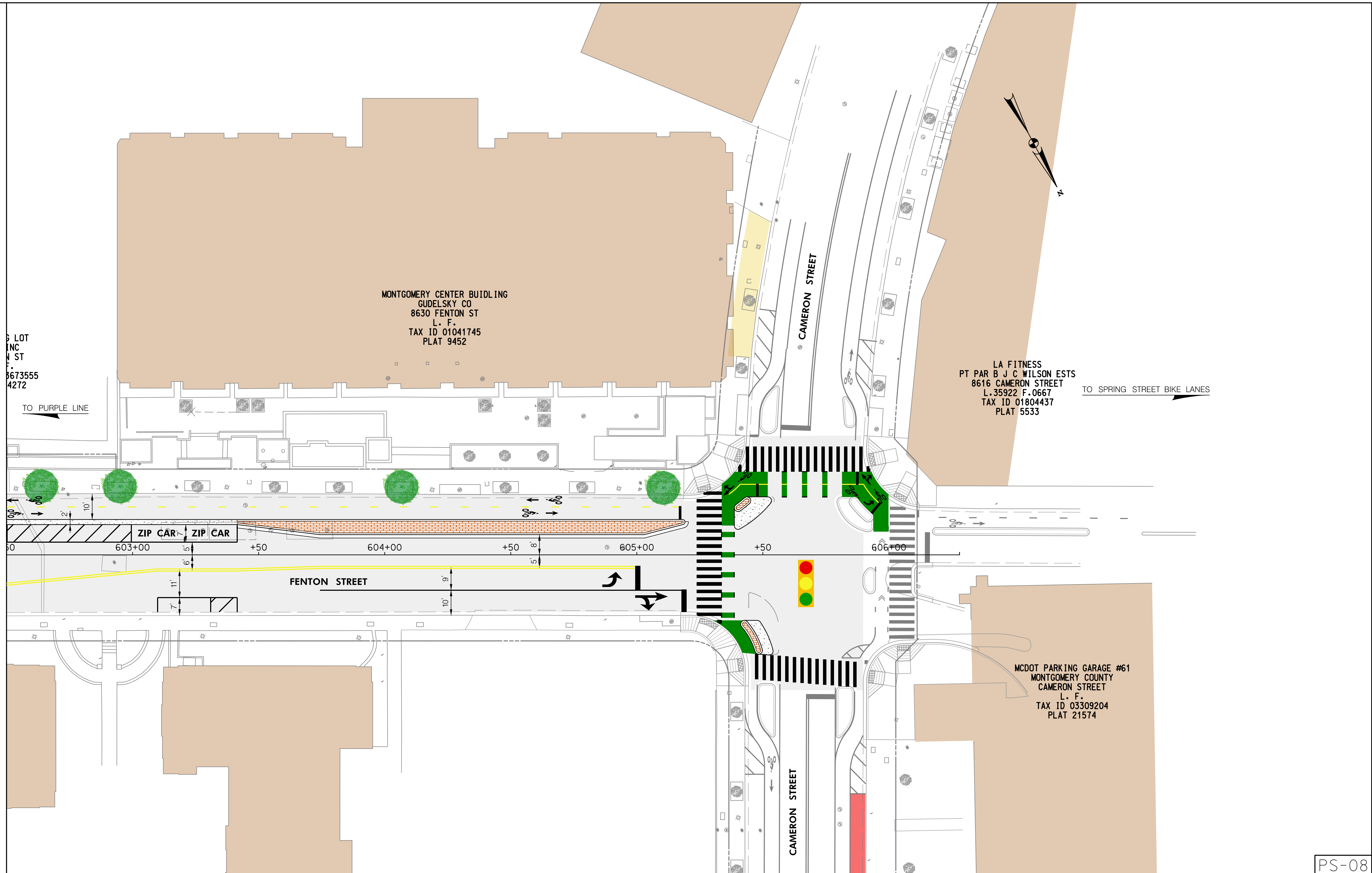
SCALE: 1"=20' SHEET 07 of 08

PS-07

Wednesday, November 11, 2020 AT 10:12 AM
 U:\202601401\24 BPPA - Fenton Street\700 CADD\700 Sheet\pHD-PB4A8_FentonStreet.dgn



MATCH LINE STA. 602+50 - SEE SHEET PS-07



LEGEND	
PROP. DETECTABLE WARNING SURFACE	BUILDING
PROP. ASPHALT PAVEMENT	PROP. GEOMETRY
PROP. CONCRETE	EX. GEOMETRY
PROP. BRICK PAVERS	PROP. RIGHT OF WAY LINE
PROP. SWM/BMP	EX. RIGHT OF WAY LINE
PROP. CAFE SEATING	PROP. FENCE
PROP. BUS STOP	EX. FENCE
CAPITAL BIKE SHARE	PROP. STREET LIGHT
EX. STREET LIGHT TO BE REMOVED	EX. STREET LIGHT TO REMAIN
PROP. UTILITY POLE	EX. UTILITY POLE TO BE REMOVED
PROP. STREET TREE	EX. UTILITY POLE TO REMIAN
EX. STREET TREE TO BE REMOVED	EX. STREET TREE TO REMAIN
PROP. FIRE HYDRANT	EX. ELECTRIC MAN HOLE
EX. FIRE HYDRANT TO BE REMOVED	EX. WATER VALVE
EX. FIRE HYDRANT TO REMIAN	EX. STORM DRAIN MANHOLE
EX. GAS VALVE	PROP. PURPLE LINE
EX. SANITARY SEWER MANHOLE	EX. TRAFFIC SIGNAL
EX. TELECOM MANHOLE	PROP. HAWK SIGNAL (BY OTHERS)
	AM LOADING ZONE

DEPARTMENT OF TRANSPORTATION
 DIVISION OF TRANSPORTATION ENGINEERING
 MONTGOMERY COUNTY, MARYLAND

FENTON STREET BIKEWAY STUDY
 ALTERNATIVE B

PS-08