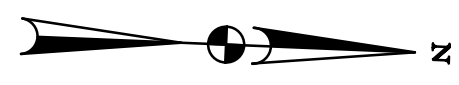
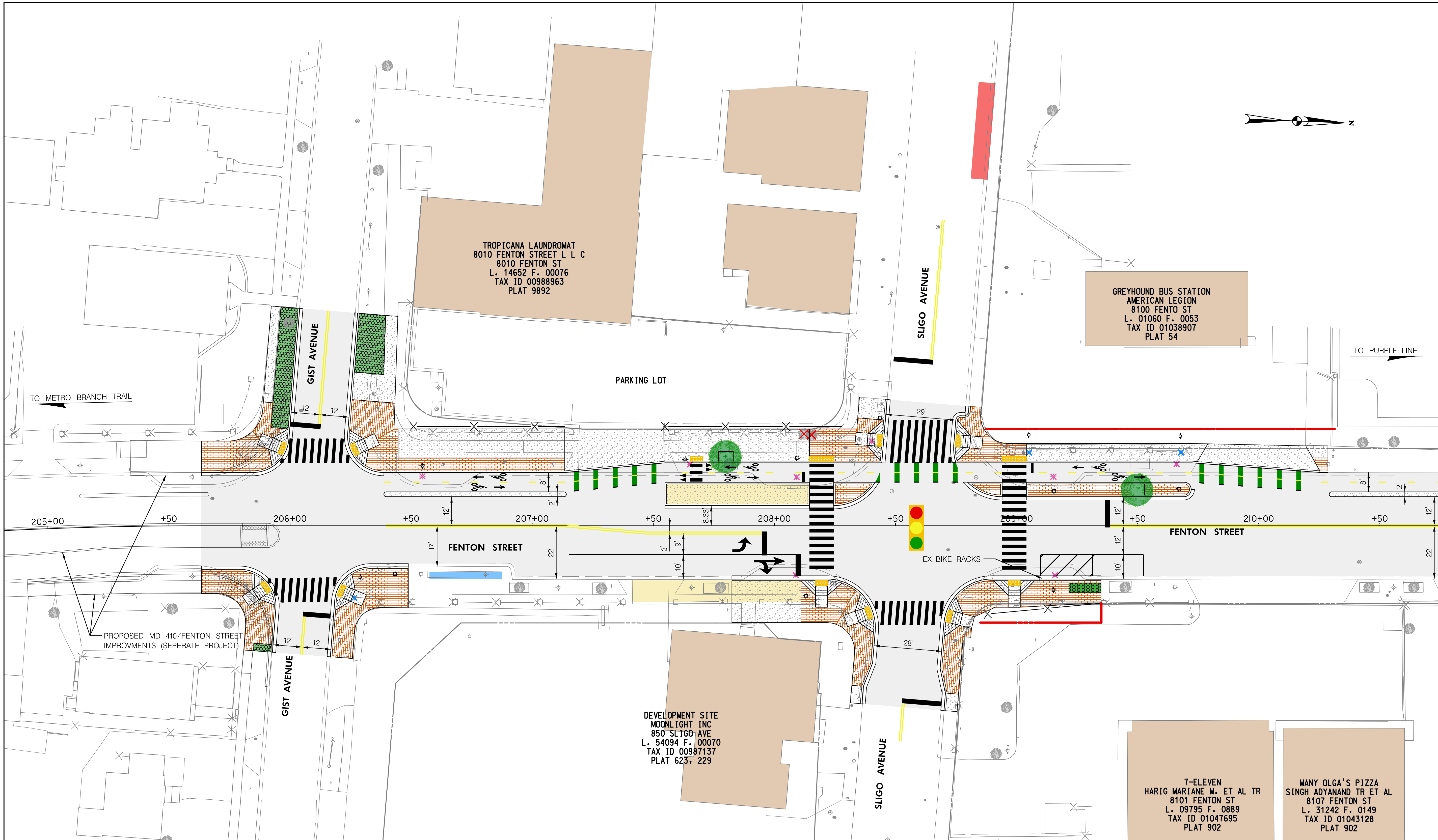
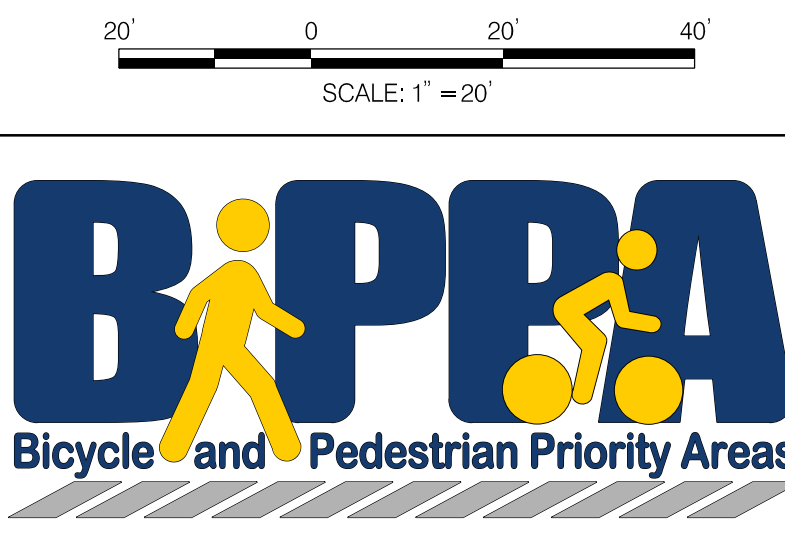


Wednesday, November 11, 2020 AT 10:15 AM
 U:\202601401\24 BPPA - Fenton Street\700 CADD\700 Sheet\pHD-PD4CL_FentonStreet.dgn



MATCH LINE STA 210+75 - SEE SHEET PS-02

PS-01

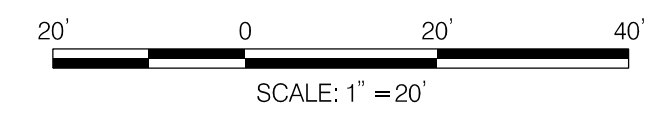


LEGEND	
	PROP. DETECTABLE WARNING SURFACE
	PROP. ASPHALT PAVEMENT
	PROP. CONCRETE
	PROP. BRICK PAVERS
	PROP. SWM/BMP
	PROP. CAFE SEATING
	PROP. BUS STOP
	CAPITAL BIKE SHARE
	BUILDING
	PROP. GEOMETRY
	EX. GEOMETRY
	PROP. RIGHT OF WAY LINE
	EX. RIGHT OF WAY LINE
	PROP. FENCE
	EX. FENCE
	PROP. STREET LIGHT
	EX. STREET LIGHT TO BE REMOVED
	EX. STREET LIGHT TO REMAIN
	PROP. UTILITY POLE
	EX. UTILITY POLE TO BE REMOVED
	EX. UTILITY POLE TO REMIAN
	PROP. STREET TREE
	EX. STREET TREE TO BE REMOVED
	EX. STREET TREE TO REMAIN
	PROP. FIRE HYDRANT
	EX. FIRE HYDRANT TO BE REMOVED
	EX. FIRE HYDRANT TO REMIAN
	EX. GAS VALVE
	EX. SANITARY SEWER MANHOLE
	EX. TELECOM MANHOLE
	EX. ELECTRIC MAN HOLE
	EX. WATER VALVE
	EX. STORM DRAIN MANHOLE
	PROP. HAWK SIGNAL (BY OTHERS)
	AM LOADING ZONE
	PROP. PURPLE LINE
	EX. TRAFFIC SIGNAL

DEPARTMENT OF TRANSPORTATION
 DIVISION OF TRANSPORTATION ENGINEERING
 MONTGOMERY COUNTY, MARYLAND

FENTON STREET BIKEWAY STUDY
 ALTERNATIVE E

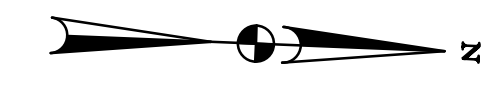
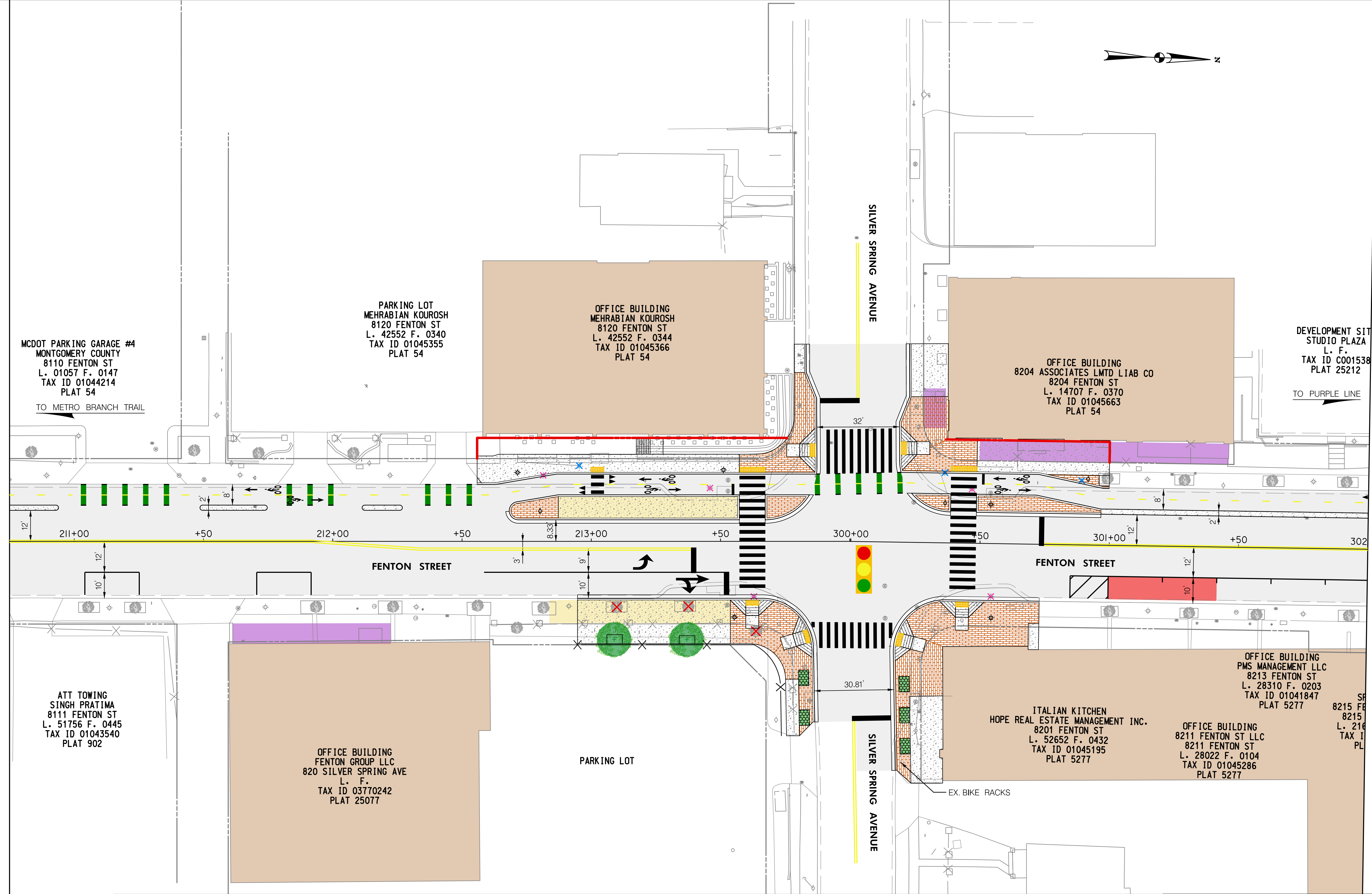
Wednesday, November 11, 2020 AT 10:15 AM
 U:\202601401\24 BPPA - Fenton Street\700 CADD\700 Sheet\pHD-P04C2_FentonStreet.dgn



LEGEND	
	PROP. DETECTABLE WARNING SURFACE
	PROP. ASPHALT PAVEMENT
	PROP. CONCRETE
	PROP. BRICK PAVERS
	PROP. SWM/BMP
	PROP. CAFE SEATING
	PROP. BUS STOP
	CAPITAL BIKE SHARE
	BUILDING
	PROP. GEOMETRY
	EX. GEOMETRY
	PROP. RIGHT OF WAY LINE
	EX. RIGHT OF WAY LINE
	PROP. FENCE
	EX. FENCE
	PROP. STREET LIGHT
	EX. STREET LIGHT TO BE REMOVED
	EX. STREET LIGHT TO REMAIN
	PROP. UTILITY POLE
	EX. UTILITY POLE TO BE REMOVED
	EX. UTILITY POLE TO REMAIN
	PROP. STREET TREE
	EX. STREET TREE TO BE REMOVED
	EX. STREET TREE TO REMAIN
	PROP. FIRE HYDRANT
	EX. FIRE HYDRANT TO BE REMOVED
	EX. FIRE HYDRANT TO REMAIN
	EX. GAS VALVE
	EX. SANITARY SEWER MANHOLE
	EX. TELECOM MANHOLE
	EX. ELECTRIC MAN HOLE
	EX. WATER VALVE
	EX. STORM DRAIN MANHOLE
	PROP. HAWK SIGNAL (BY OTHERS)
	AM LOADING ZONE
	PROP. PURPLE LINE
	EX. TRAFFIC SIGNAL

MATCH LINE STA. 210+75 - SEE SHEET PS-01

MATCH LINE STA. 302+00 - SEE SHEET PS-03



PS-02

DEPARTMENT OF TRANSPORTATION
 DIVISION OF TRANSPORTATION ENGINEERING
 MONTGOMERY COUNTY, MARYLAND

FENTON STREET BIKEWAY STUDY
 ALTERNATIVE E

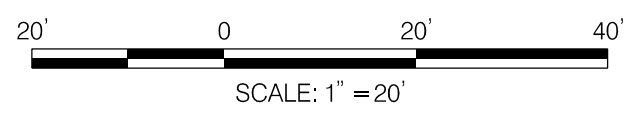
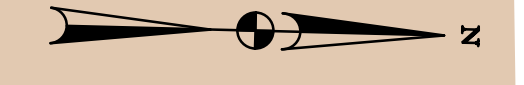
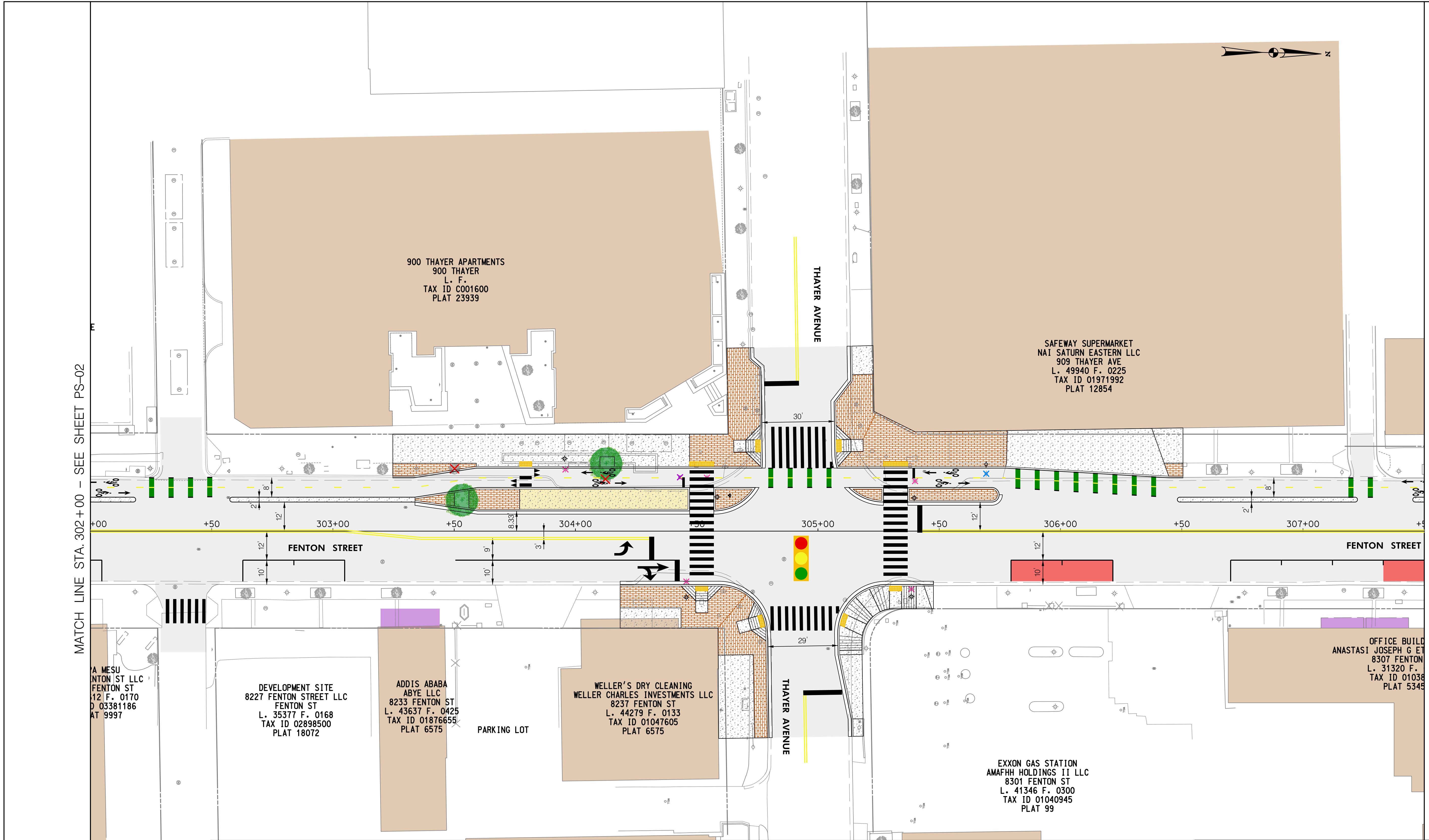
SCALE: 1"=20'

SHEET 02 of 08

Wednesday, November 11, 2020 AT 10:15 AM
 U:\202601401\24 BPPA - Fenton Street\700 CADD\700 Sheet\p4D-P4C3_FentonStreet.dgn

MATCH LINE STA. 302+00 - SEE SHEET PS-02

MATCH LINE STA. 307+50 - SEE SHEET PS-04



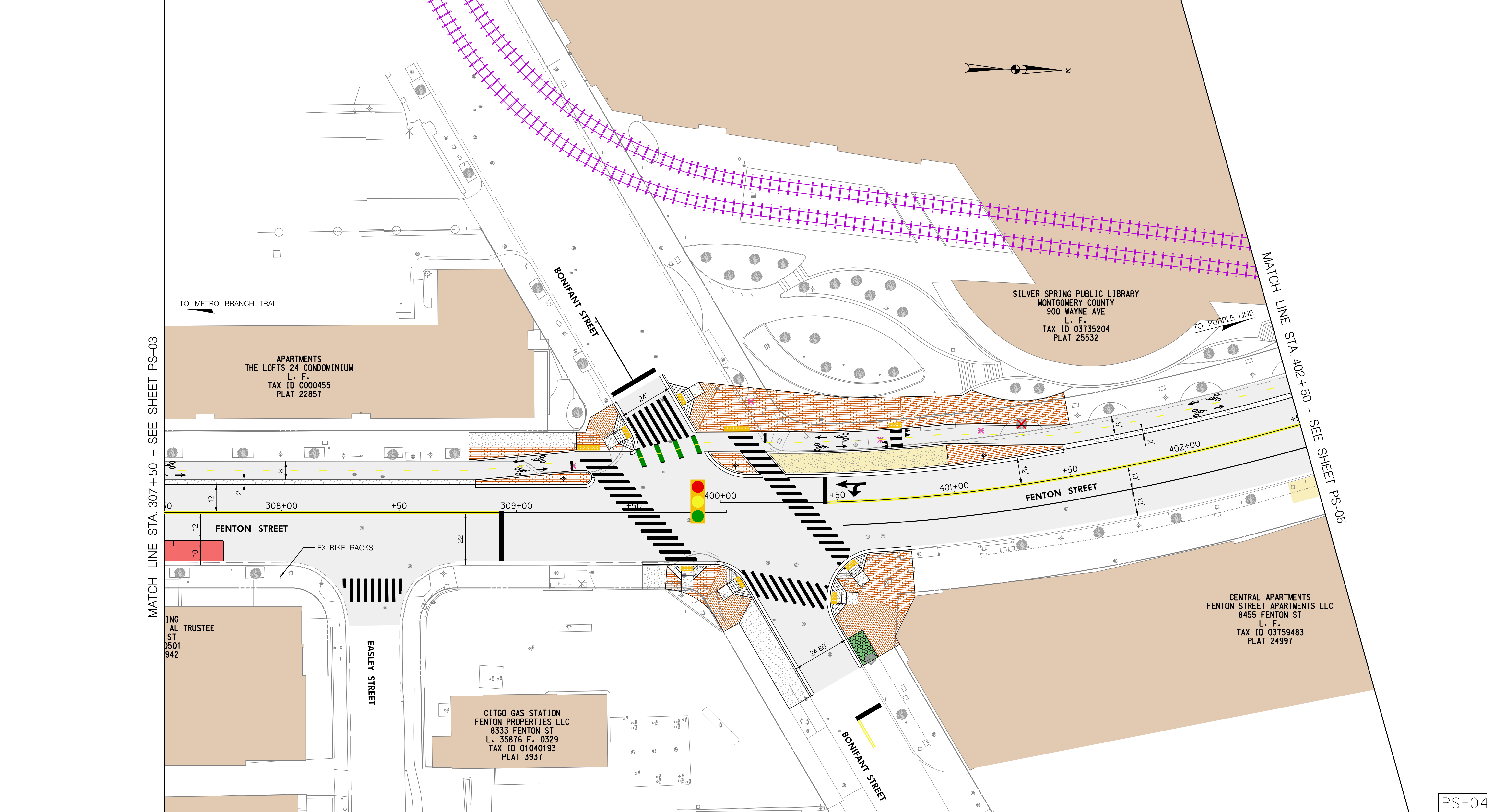
LEGEND	
	PROP. DETECTABLE WARNING SURFACE
	PROP. ASPHALT PAVEMENT
	PROP. CONCRETE
	PROP. BRICK PAVERS
	PROP. SWM/BMP
	PROP. CAFE SEATING
	PROP. BUS STOP
	CAPITAL BIKE SHARE
	BUILDING
	PROP. GEOMETRY
	EX. GEOMETRY
	PROP. RIGHT OF WAY LINE
	EX. RIGHT OF WAY LINE
	PROP. FENCE
	EX. FENCE
	PROP. STREET LIGHT
	EX. STREET LIGHT TO BE REMOVED
	EX. STREET LIGHT TO REMAIN
	PROP. UTILITY POLE
	EX. UTILITY POLE TO BE REMOVED
	EX. UTILITY POLE TO REMAIN
	PROP. STREET TREE
	EX. STREET TREE TO BE REMOVED
	EX. STREET TREE TO REMAIN
	PROP. FIRE HYDRANT
	EX. FIRE HYDRANT TO BE REMOVED
	EX. FIRE HYDRANT TO REMAIN
	EX. GAS VALVE
	EX. SANITARY SEWER MANHOLE
	EX. TELECOM MANHOLE
	EX. ELECTRIC MAN HOLE
	EX. WATER VALVE
	EX. STORM DRAIN MANHOLE
	PROP. HAWK SIGNAL (BY OTHERS)
	AM LOADING ZONE
	PROP. PURPLE LINE
	EX. TRAFFIC SIGNAL

DEPARTMENT OF TRANSPORTATION
 DIVISION OF TRANSPORTATION ENGINEERING
 MONTGOMERY COUNTY, MARYLAND

FENTON STREET BIKEWAY STUDY
 ALTERNATIVE E

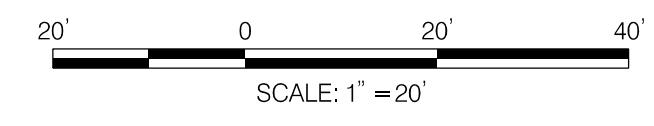
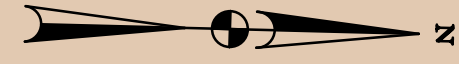
PS-03

Wednesday, November 11, 2020 AT 10:15 AM
 U:\202601401\24 BPPA - Fenton Street\700 CADD\700 Sheet\pHD-PD4C4_FentonStreet.dgn



MATCH LINE STA. 307+50 - SEE SHEET PS-03

MATCH LINE STA. 402+50 - SEE SHEET PS-05



LEGEND	
	PROP. DETECTABLE WARNING SURFACE
	PROP. ASPHALT PAVEMENT
	PROP. CONCRETE
	PROP. BRICK PAVERS
	PROP. SWM/BMP
	PROP. CAFE SEATING
	PROP. BUS STOP
	CAPITAL BIKE SHARE
	BUILDING
	PROP. GEOMETRY
	EX. GEOMETRY
	PROP. RIGHT OF WAY LINE
	EX. RIGHT OF WAY LINE
	PROP. FENCE
	EX. FENCE
	PROP. STREET LIGHT
	EX. STREET LIGHT TO BE REMOVED
	EX. STREET LIGHT TO REMAIN
	PROP. UTILITY POLE
	EX. UTILITY POLE TO BE REMOVED
	EX. UTILITY POLE TO REMIAN
	PROP. STREET TREE
	EX. STREET TREE TO BE REMOVED
	EX. STREET TREE TO REMAIN
	PROP. FIRE HYDRANT
	EX. FIRE HYDRANT TO BE REMOVED
	EX. FIRE HYDRANT TO REMIAN
	EX. GAS VALVE
	EX. SANITARY SEWER MANHOLE
	EX. TELECOM MANHOLE
	EX. ELECTRIC MAN HOLE
	EX. WATER VALVE
	EX. STORM DRAIN MANHOLE
	PROP. HAWK SIGNAL (BY OTHERS)
	AM LOADING ZONE
	PROP. PURPLE LINE
	EX. TRAFFIC SIGNAL

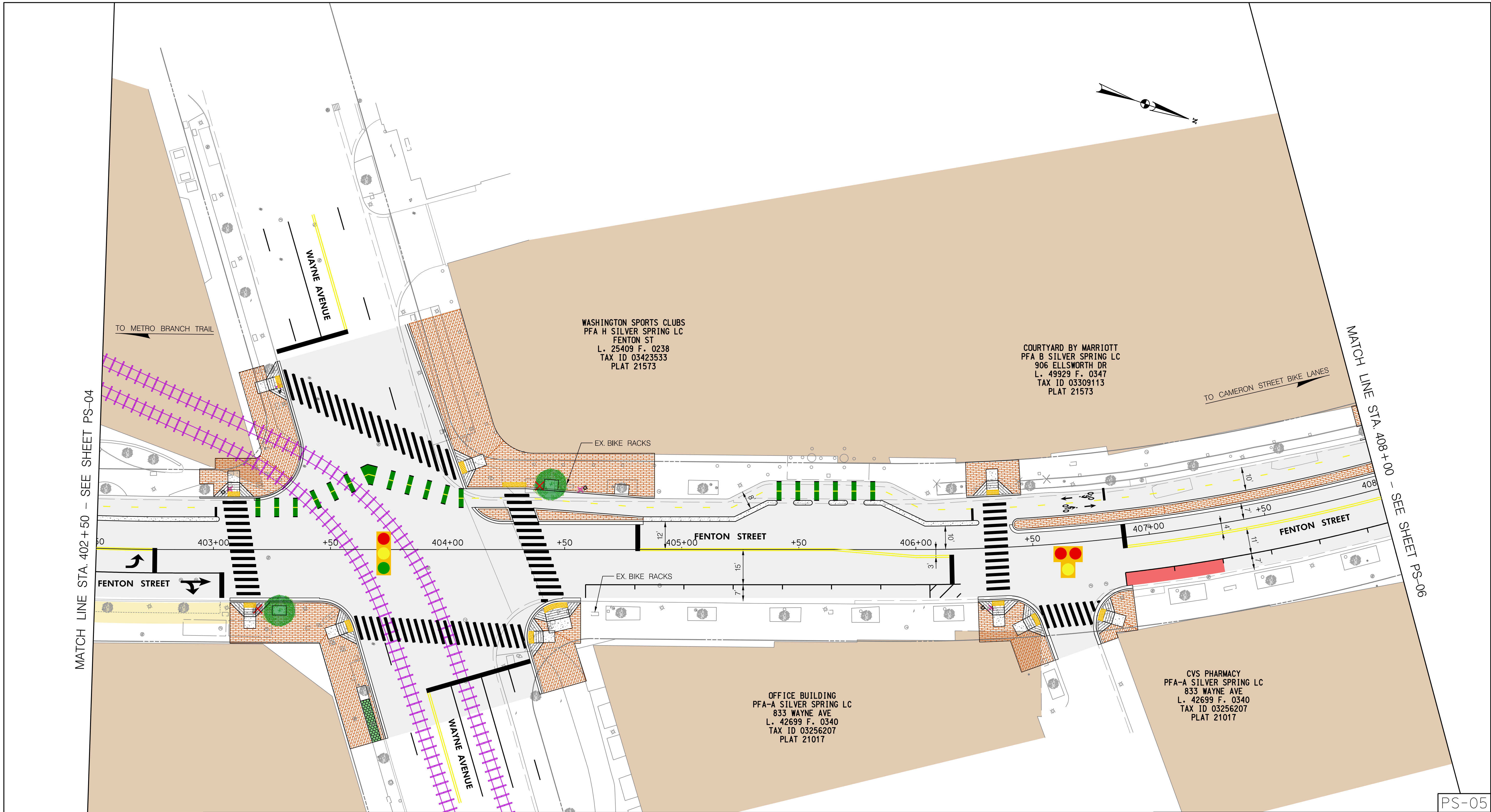
DEPARTMENT OF TRANSPORTATION
 DIVISION OF TRANSPORTATION ENGINEERING
 MONTGOMERY COUNTY, MARYLAND

FENTON STREET BIKEWAY STUDY
 ALTERNATIVE E

SCALE: 1"=20' SHEET 04 of 08

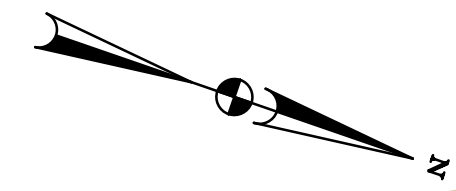
PS-04

Wednesday, November 11, 2020 AT 10:15 AM
 U:\2026011401\24 BPPA - Fenton Street\700 CADD\700 Sheet\pHD-PD4C5_FentonStreet.dgn



MATCH LINE STA. 402+50 - SEE SHEET PS-04

MATCH LINE STA. 408+00 - SEE SHEET PS-06

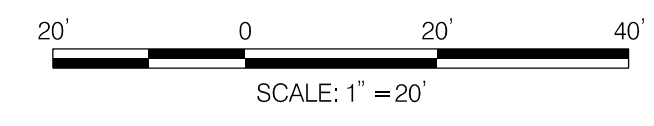


WASHINGTON SPORTS CLUBS
 PFA H SILVER SPRING LC
 FENTON ST
 L. 25409 F. 0238
 TAX ID 03423533
 PLAT 21573

COURTYARD BY MARRIOTT
 PFA B SILVER SPRING LC
 906 ELLSWORTH DR
 L. 49929 F. 0347
 TAX ID 03309113
 PLAT 21573

OFFICE BUILDING
 PFA-A SILVER SPRING LC
 833 WAYNE AVE
 L. 42699 F. 0340
 TAX ID 03256207
 PLAT 21017

CVS PHARMACY
 PFA-A SILVER SPRING LC
 833 WAYNE AVE
 L. 42699 F. 0340
 TAX ID 03256207
 PLAT 21017



LEGEND	
	PROP. DETECTABLE WARNING SURFACE
	PROP. ASPHALT PAVEMENT
	PROP. CONCRETE
	PROP. BRICK PAVERS
	PROP. SWM/BMP
	PROP. CAFE SEATING
	PROP. BUS STOP
	CAPITAL BIKE SHARE
	BUILDING
	PROP. GEOMETRY
	EX. GEOMETRY
	PROP. RIGHT OF WAY LINE
	EX. RIGHT OF WAY LINE
	PROP. FENCE
	EX. FENCE
	PROP. STREET LIGHT
	EX. STREET LIGHT TO BE REMOVED
	EX. STREET LIGHT TO REMAIN
	PROP. UTILITY POLE
	EX. UTILITY POLE TO BE REMOVED
	EX. UTILITY POLE TO REMIAN
	PROP. STREET TREE
	EX. STREET TREE TO BE REMOVED
	EX. STREET TREE TO REMAIN
	PROP. FIRE HYDRANT
	EX. FIRE HYDRANT TO BE REMOVED
	EX. FIRE HYDRANT TO REMIAN
	EX. GAS VALVE
	EX. SANITARY SEWER MANHOLE
	EX. TELECOM MANHOLE
	EX. ELECTRIC MAN HOLE
	EX. WATER VALVE
	EX. STORM DRAIN MANHOLE
	PROP. HAWK SIGNAL (BY OTHERS)
	AM LOADING ZONE
	PROP. PURPLE LINE
	EX. TRAFFIC SIGNAL

DEPARTMENT OF TRANSPORTATION
 DIVISION OF TRANSPORTATION ENGINEERING
 MONTGOMERY COUNTY, MARYLAND

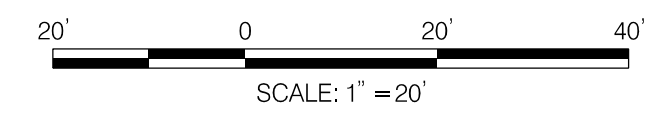
FENTON STREET BIKEWAY STUDY
 ALTERNATIVE E

SCALE: 1"=20'

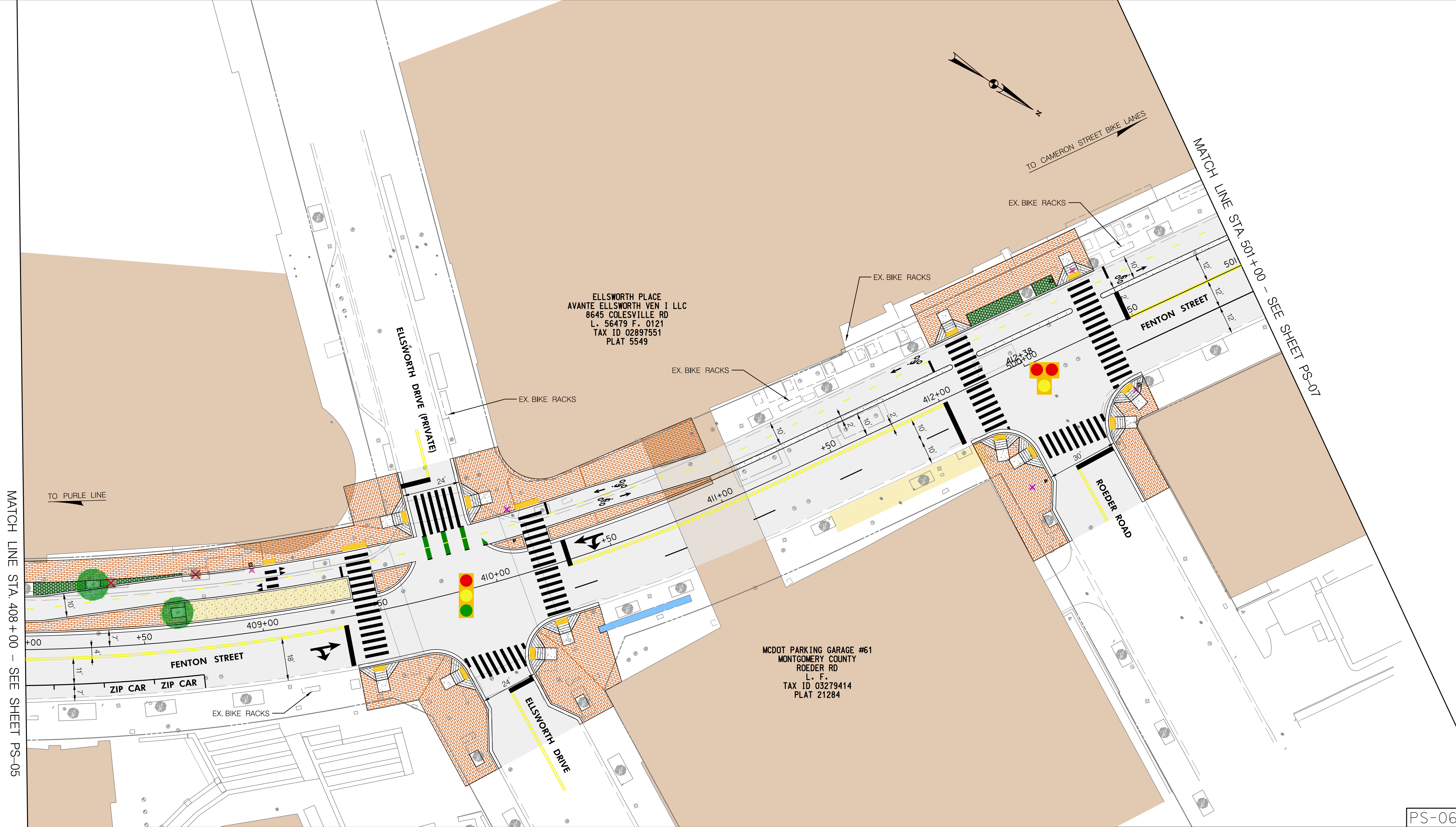
SHEET 05 of 08

PS-05

Wednesday, November 11, 2020 AT 10:15 AM
 U:\202601401\24 BPPA - Fenton Street\700 CADD\700 Sheet\pHD-P0406_FentonStreet.dgn



MATCH LINE STA. 408+00 - SEE SHEET PS-05



MATCH LINE STA. 501+00 - SEE SHEET PS-07

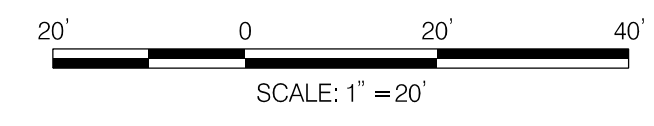
LEGEND	
	PROP. DETECTABLE WARNING SURFACE
	PROP. ASPHALT PAVEMENT
	PROP. CONCRETE
	PROP. BRICK PAVERS
	PROP. SWM/BMP
	PROP. CAFE SEATING
	PROP. BUS STOP
	CAPITAL BIKE SHARE
	BUILDING
	PROP. GEOMETRY
	EX. GEOMETRY
	PROP. RIGHT OF WAY LINE
	EX. RIGHT OF WAY LINE
	PROP. FENCE
	EX. FENCE
	PROP. STREET LIGHT
	EX. STREET LIGHT TO BE REMOVED
	EX. STREET LIGHT TO REMAIN
	PROP. UTILITY POLE
	EX. UTILITY POLE TO BE REMOVED
	EX. UTILITY POLE TO REMIAN
	PROP. STREET TREE
	EX. STREET TREE TO BE REMOVED
	EX. STREET TREE TO REMAIN
	PROP. FIRE HYDRANT
	EX. FIRE HYDRANT TO BE REMOVED
	EX. FIRE HYDRANT TO REMIAN
	EX. GAS VALVE
	EX. SANITARY SEWER MANHOLE
	EX. TELECOM MANHOLE
	EX. ELECTRIC MAN HOLE
	EX. WATER VALVE
	EX. STORM DRAIN MANHOLE
	PROP. HAWK SIGNAL (BY OTHERS)
	AM LOADING ZONE
	PROP. PURPLE LINE
	EX. TRAFFIC SIGNAL

DEPARTMENT OF TRANSPORTATION
 DIVISION OF TRANSPORTATION ENGINEERING
 MONTGOMERY COUNTY, MARYLAND

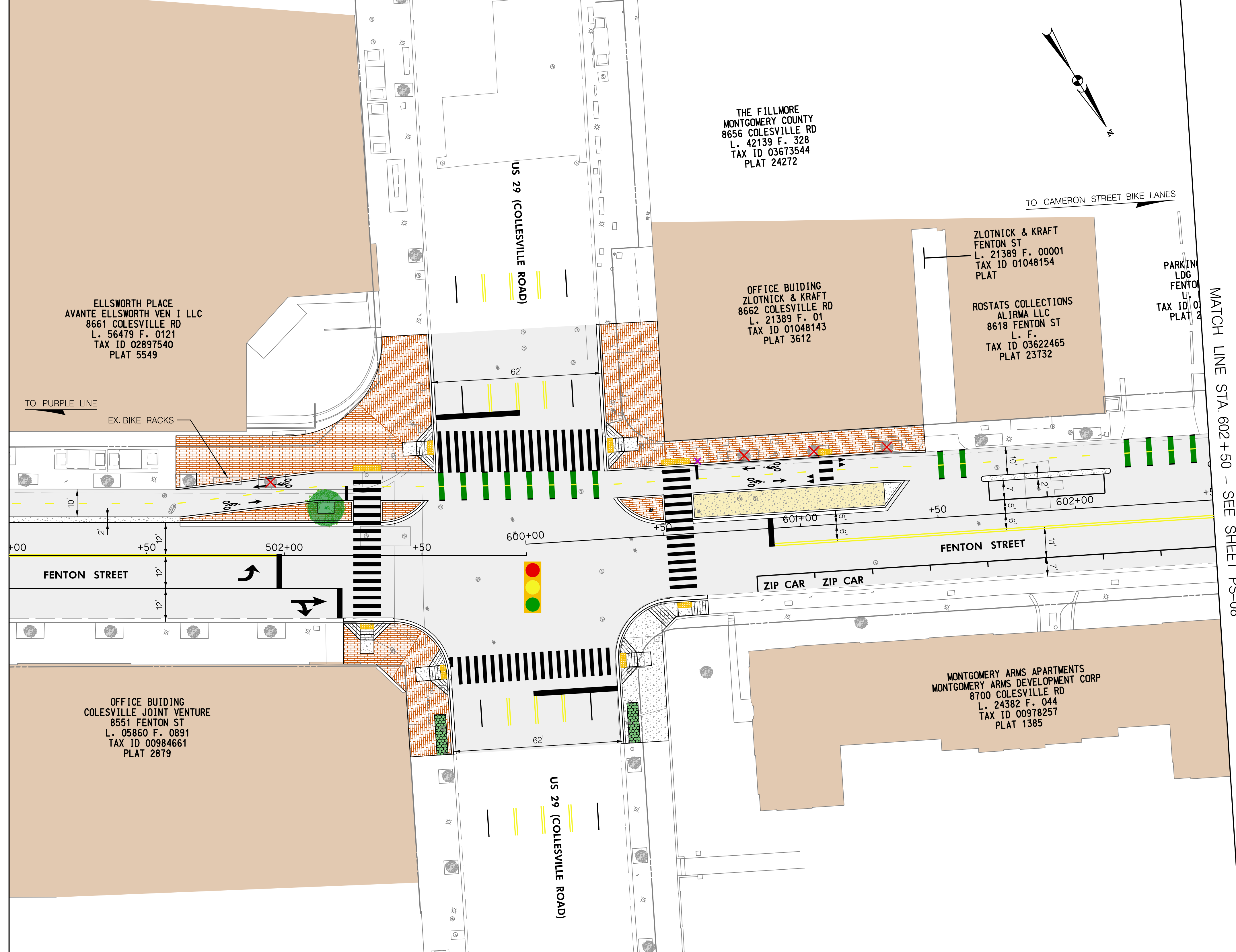
FENTON STREET BIKEWAY STUDY
 ALTERNATIVE E

PS-06

Wednesday, November 11, 2020 AT 10:15 AM
 U:\202601401\24 BPPA - Fenton Street\700 CADD\700 Sheet\pHD-PD4C7_FentonStreet.dgn



MATCH LINE STA. 501+00 - SEE SHEET PS-06



MATCH LINE STA. 602+50 - SEE SHEET PS-08

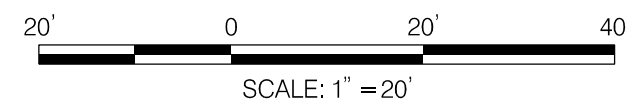
PS-07

LEGEND	
	PROP. DETECTABLE WARNING SURFACE
	PROP. ASPHALT PAVEMENT
	PROP. CONCRETE
	PROP. BRICK PAVERS
	PROP. SWM/BMP
	PROP. CAFE SEATING
	PROP. BUS STOP
	CAPITAL BIKE SHARE
	BUILDING
	PROP. GEOMETRY
	EX. GEOMETRY
	PROP. RIGHT OF WAY LINE
	EX. RIGHT OF WAY LINE
	PROP. FENCE
	EX. FENCE
	PROP. STREET LIGHT
	EX. STREET LIGHT TO BE REMOVED
	EX. STREET LIGHT TO REMAIN
	PROP. UTILITY POLE
	EX. UTILITY POLE TO BE REMOVED
	EX. UTILITY POLE TO REMIAN
	PROP. STREET TREE
	EX. STREET TREE TO BE REMOVED
	EX. STREET TREE TO REMAIN
	PROP. FIRE HYDRANT
	EX. FIRE HYDRANT TO BE REMOVED
	EX. FIRE HYDRANT TO REMIAN
	EX. GAS VALVE
	EX. SANITARY SEWER MANHOLE
	EX. TELECOM MANHOLE
	EX. ELECTRIC MAN HOLE
	EX. WATER VALVE
	EX. STORM DRAIN MANHOLE
	PROP. HAWK SIGNAL (BY OTHERS)
	AM LOADING ZONE
	PROP. PURPLE LINE
	EX. TRAFFIC SIGNAL

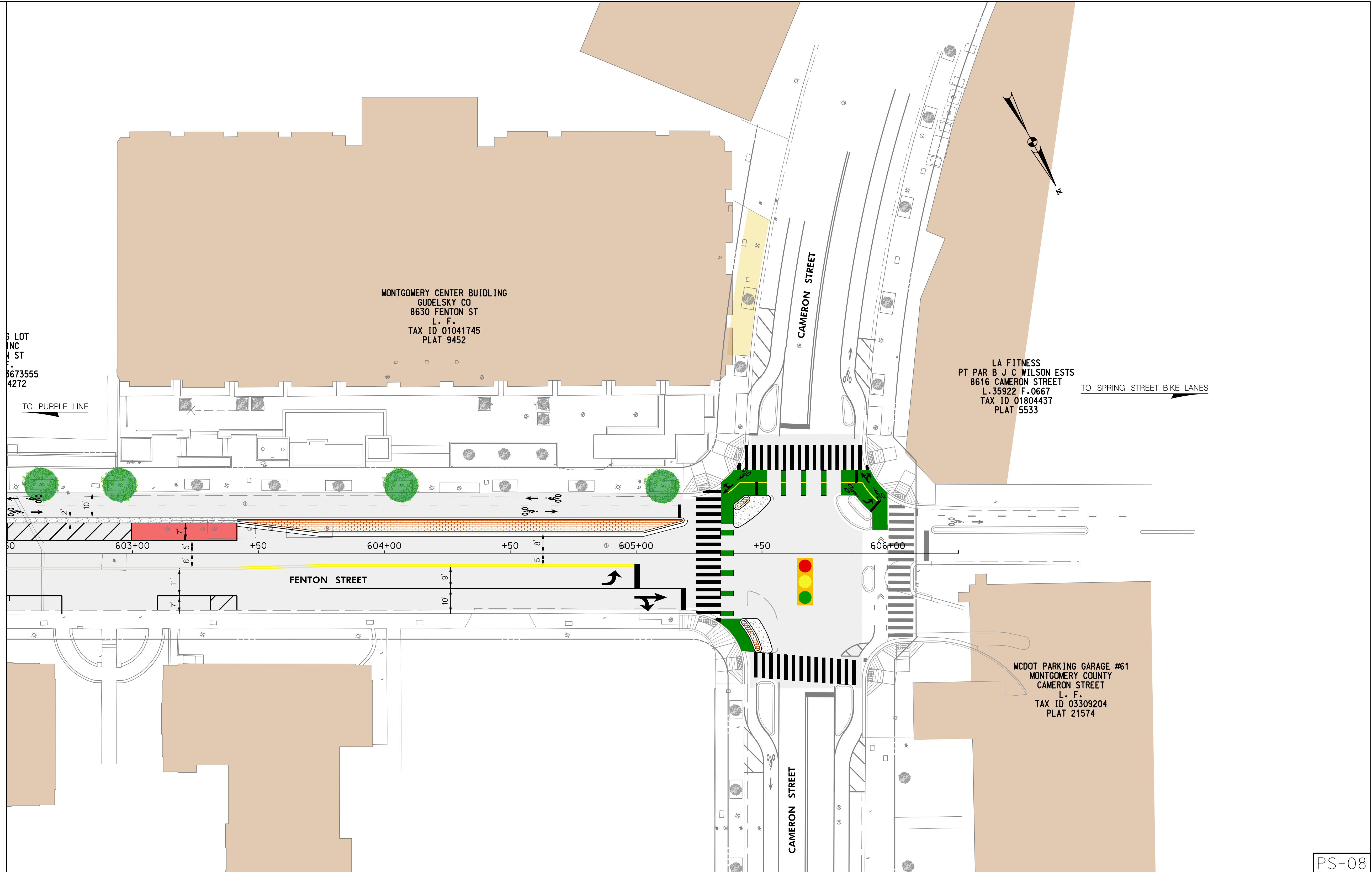
DEPARTMENT OF TRANSPORTATION
 DIVISION OF TRANSPORTATION ENGINEERING
 MONTGOMERY COUNTY, MARYLAND

FENTON STREET BIKEWAY STUDY
 ALTERNATIVE E

Wednesday, November 11, 2020 AT 10:15 AM
 U:\202601401\24 BPPA - Fenton Street\700 CADD\700 Sheet\pHD-PD408_FentonStreet.dgn



MATCH LINE STA. 602+50 - SEE SHEET PS-07



LEGEND	
PROP. DETECTABLE WARNING SURFACE	BUILDING
PROP. ASPHALT PAVEMENT	PROP. GEOMETRY
PROP. CONCRETE	EX. GEOMETRY
PROP. BRICK PAVERS	PROP. RIGHT OF WAY LINE
PROP. SWM/BMP	EX. RIGHT OF WAY LINE
PROP. CAFE SEATING	PROP. FENCE
PROP. BUS STOP	EX. FENCE
CAPITAL BIKE SHARE	PROP. STREET LIGHT
EX. STREET LIGHT TO BE REMOVED	EX. STREET TREE TO BE REMOVED
EX. STREET LIGHT TO REMAIN	EX. STREET TREE TO REMAIN
PROP. UTILITY POLE	PROP. FIRE HYDRANT
EX. UTILITY POLE TO BE REMOVED	EX. FIRE HYDRANT TO BE REMOVED
EX. UTILITY POLE TO REMIAN	EX. FIRE HYDRANT TO REMIAN
PROP. STREET TREE	EX. GAS VALVE
EX. STREET TREE TO BE REMOVED	EX. SANITARY SEWER MANHOLE
EX. STREET TREE TO REMAIN	EX. TELECOM MANHOLE
PROP. UTILITY POLE	EX. ELECTRIC MAN HOLE
EX. UTILITY POLE TO BE REMOVED	EX. WATER VALVE
EX. UTILITY POLE TO REMIAN	EX. STORM DRAIN MANHOLE
PROP. FIRE HYDRANT	PROP. HAWK SIGNAL (BY OTHERS)
EX. FIRE HYDRANT TO BE REMOVED	AM LOADING ZONE
EX. FIRE HYDRANT TO REMIAN	PROP. PURPLE LINE
EX. GAS VALVE	EX. TRAFFIC SIGNAL
EX. SANITARY SEWER MANHOLE	
EX. TELECOM MANHOLE	

DEPARTMENT OF TRANSPORTATION
 DIVISION OF TRANSPORTATION ENGINEERING
 MONTGOMERY COUNTY, MARYLAND

FENTON STREET BIKEWAY STUDY
 ALTERNATIVE E

PS-08