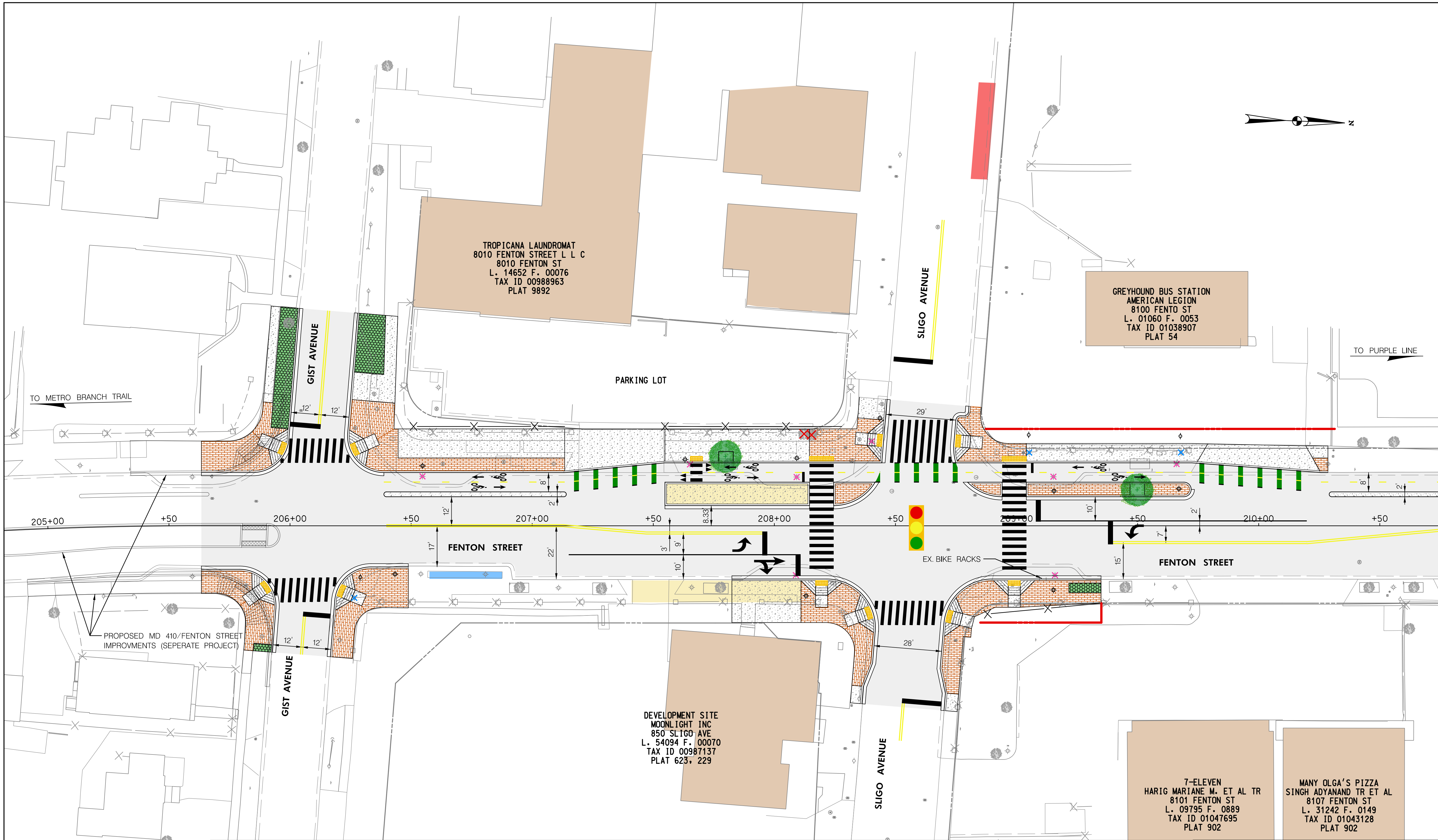


Wednesday, November 11, 2020 AT 10:16 AM  
 U:\202601401\24 BPPA - Fenton Street\700 CADD\700 Sheet\pHD-PD4\F1\_FentonStreet.dgn



MATCH LINE STA 210+75 - SEE SHEET PS-02

PS-01

**BPPA**  
 Bicycle and Pedestrian Priority Areas

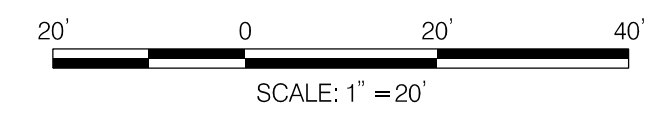
LEGEND	
	PROP. DETECTABLE WARNING SURFACE
	PROP. ASPHALT PAVEMENT
	PROP. CONCRETE
	PROP. BRICK PAVERS
	PROP. SWM/BMP
	PROP. CAFE SEATING
	PROP. BUS STOP
	CAPITAL BIKE SHARE
	BUILDING
	PROP. GEOMETRY
	EX. GEOMETRY
	PROP. RIGHT OF WAY LINE
	EX. RIGHT OF WAY LINE
	PROP. FENCE
	EX. FENCE
	PROP. STREET LIGHT
	EX. STREET LIGHT TO BE REMOVED
	EX. STREET LIGHT TO REMAIN
	PROP. UTILITY POLE
	EX. UTILITY POLE TO BE REMOVED
	EX. UTILITY POLE TO REMIAN
	PROP. STREET TREE
	EX. STREET TREE TO BE REMOVED
	EX. STREET TREE TO REMAIN
	PROP. FIRE HYDRANT
	EX. FIRE HYDRANT TO BE REMOVED
	EX. FIRE HYDRANT TO REMIAN
	EX. GAS VALVE
	EX. SANITARY SEWER MANHOLE
	EX. TELECOM MANHOLE
	EX. ELECTRIC MAN HOLE
	EX. WATER VALVE
	EX. STORM DRAIN MANHOLE
	PROP. HAWK SIGNAL (BY OTHERS)
	AM LOADING ZONE
	PROP. PURPLE LINE
	EX. TRAFFIC SIGNAL

DEPARTMENT OF TRANSPORTATION  
 DIVISION OF TRANSPORTATION ENGINEERING  
 MONTGOMERY COUNTY, MARYLAND

FENTON STREET BIKEWAY STUDY  
 ALTERNATIVE F

SCALE: 1"=20' SHEET 01 of 08

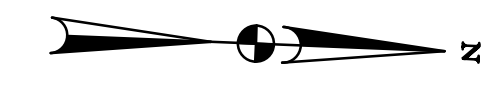
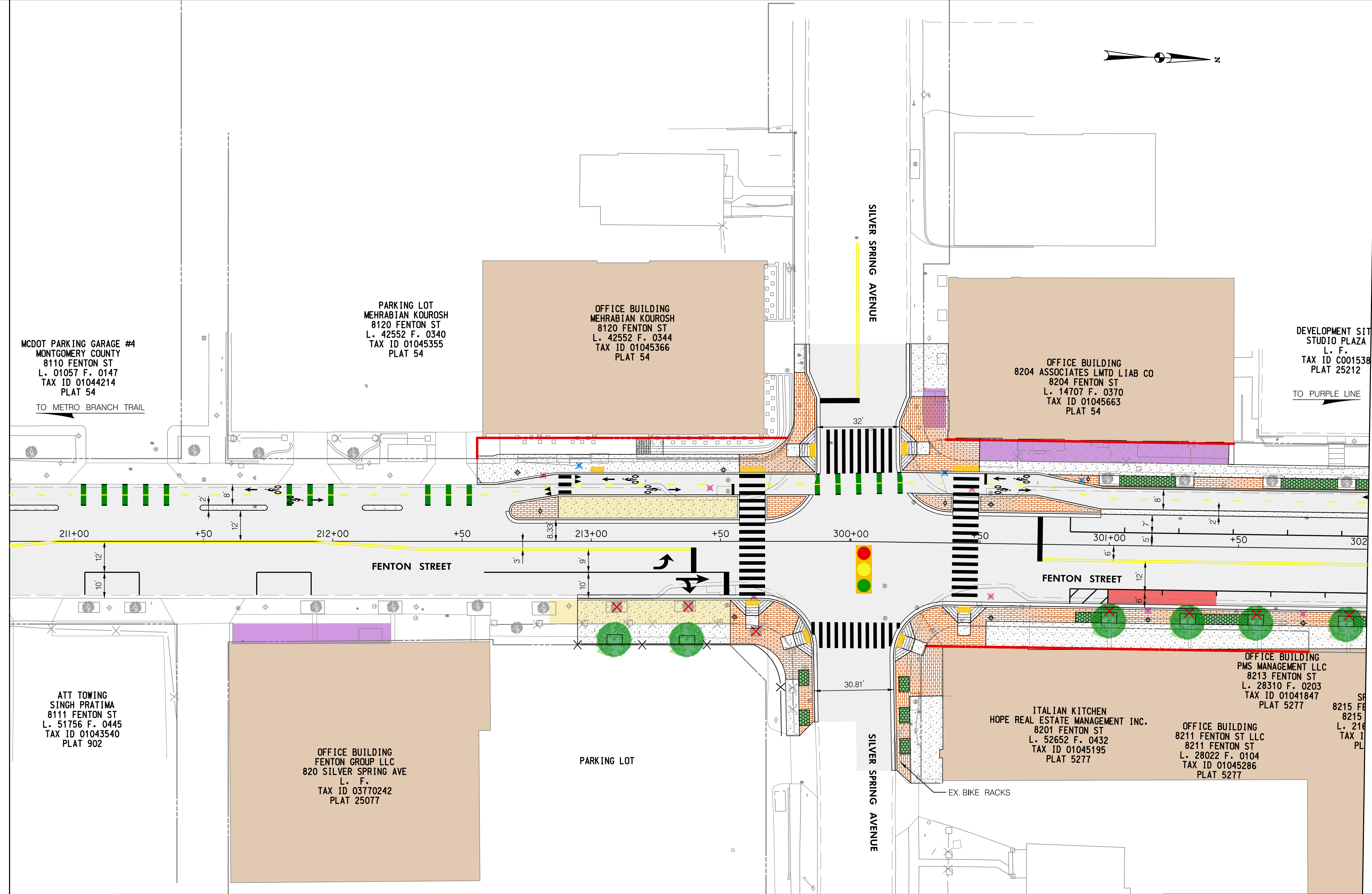
Wednesday, November 11, 2020 AT 10:16 AM  
 U:\202601401\24 BPPA - Fenton Street\700 CADD\700 Sheet\pHD-PD4F2\_FentonStreet.dgn



LEGEND	
	PROP. DETECTABLE WARNING SURFACE
	PROP. ASPHALT PAVEMENT
	PROP. CONCRETE
	PROP. BRICK PAVERS
	PROP. SWM/BMP
	PROP. CAFE SEATING
	PROP. BUS STOP
	CAPITAL BIKE SHARE
	BUILDING
	PROP. GEOMETRY
	EX. GEOMETRY
	PROP. RIGHT OF WAY LINE
	EX. RIGHT OF WAY LINE
	PROP. FENCE
	EX. FENCE
	PROP. STREET LIGHT
	EX. STREET LIGHT TO BE REMOVED
	EX. STREET LIGHT TO REMAIN
	PROP. UTILITY POLE
	EX. UTILITY POLE TO BE REMOVED
	EX. UTILITY POLE TO REMAIN
	PROP. STREET TREE
	EX. STREET TREE TO BE REMOVED
	EX. STREET TREE TO REMAIN
	PROP. FIRE HYDRANT
	EX. FIRE HYDRANT TO BE REMOVED
	EX. FIRE HYDRANT TO REMAIN
	EX. GAS VALVE
	EX. SANITARY SEWER MANHOLE
	EX. TELECOM MANHOLE
	EX. ELECTRIC MAN HOLE
	EX. WATER VALVE
	EX. STORM DRAIN MANHOLE
	PROP. HAWK SIGNAL (BY OTHERS)
	AM LOADING ZONE
	PROP. PURPLE LINE
	EX. TRAFFIC SIGNAL

MATCH LINE STA. 210+75 - SEE SHEET PS-01

MATCH LINE STA. 302+00 - SEE SHEET PS-03



DEPARTMENT OF TRANSPORTATION  
 DIVISION OF TRANSPORTATION ENGINEERING  
 MONTGOMERY COUNTY, MARYLAND

FENTON STREET BIKEWAY STUDY  
 ALTERNATIVE F

SCALE: 1"=20'

SHEET 02 of 08

PS-02

Wednesday, November 11, 2020 AT 10:16 AM  
 U:\202601401\24 BPPA - Fenton Street\700 CADD\700 Sheet\p4d-P04F3\_FentonStreet.dgn

MATCH LINE STA. 302+00 - SEE SHEET PS-02

MATCH LINE STA. 307+50 - SEE SHEET PS-04



SCALE: 1"=20'

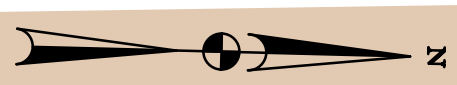
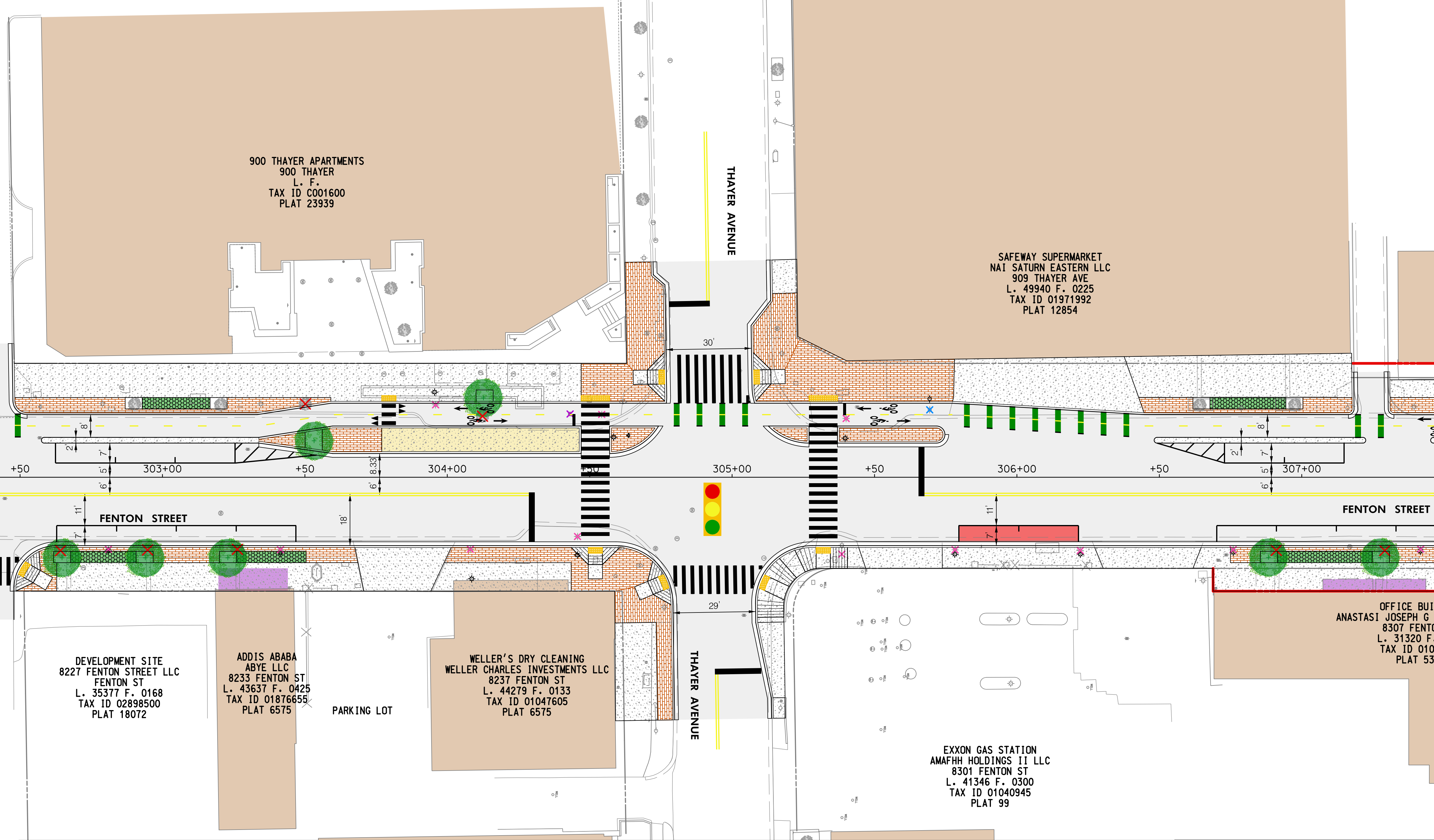
LEGEND	
	PROP. DETECTABLE WARNING SURFACE
	PROP. ASPHALT PAVEMENT
	PROP. CONCRETE
	PROP. BRICK PAVERS
	PROP. SWM/BMP
	PROP. CAFE SEATING
	PROP. BUS STOP
	CAPITAL BIKE SHARE
	BUILDING
	PROP. GEOMETRY
	EX. GEOMETRY
	PROP. RIGHT OF WAY LINE
	EX. RIGHT OF WAY LINE
	PROP. FENCE
	EX. FENCE
	PROP. STREET LIGHT
	PROP. STREET TREE
	EX. STREET LIGHT TO BE REMOVED
	EX. STREET LIGHT TO REMAIN
	PROP. UTILITY POLE
	EX. UTILITY POLE TO BE REMOVED
	EX. UTILITY POLE TO REMAIN
	EX. STREET TREE TO BE REMOVED
	EX. STREET TREE TO REMAIN
	PROP. FIRE HYDRANT
	EX. FIRE HYDRANT TO BE REMOVED
	EX. FIRE HYDRANT TO REMAIN
	EX. GAS VALVE
	EX. SANITARY SEWER MANHOLE
	EX. TELECOM MANHOLE
	EX. ELECTRIC MAN HOLE
	EX. WATER VALVE
	EX. STORM DRAIN MANHOLE
	PROP. HAWK SIGNAL (BY OTHERS)
	AM LOADING ZONE
	PROP. PURPLE LINE
	EX. TRAFFIC SIGNAL

DEPARTMENT OF TRANSPORTATION  
 DIVISION OF TRANSPORTATION ENGINEERING  
 MONTGOMERY COUNTY, MARYLAND

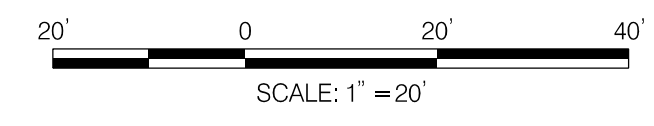
FENTON STREET BIKEWAY STUDY  
 ALTERNATIVE F

SCALE: 1"=20' SHEET 03 of 08

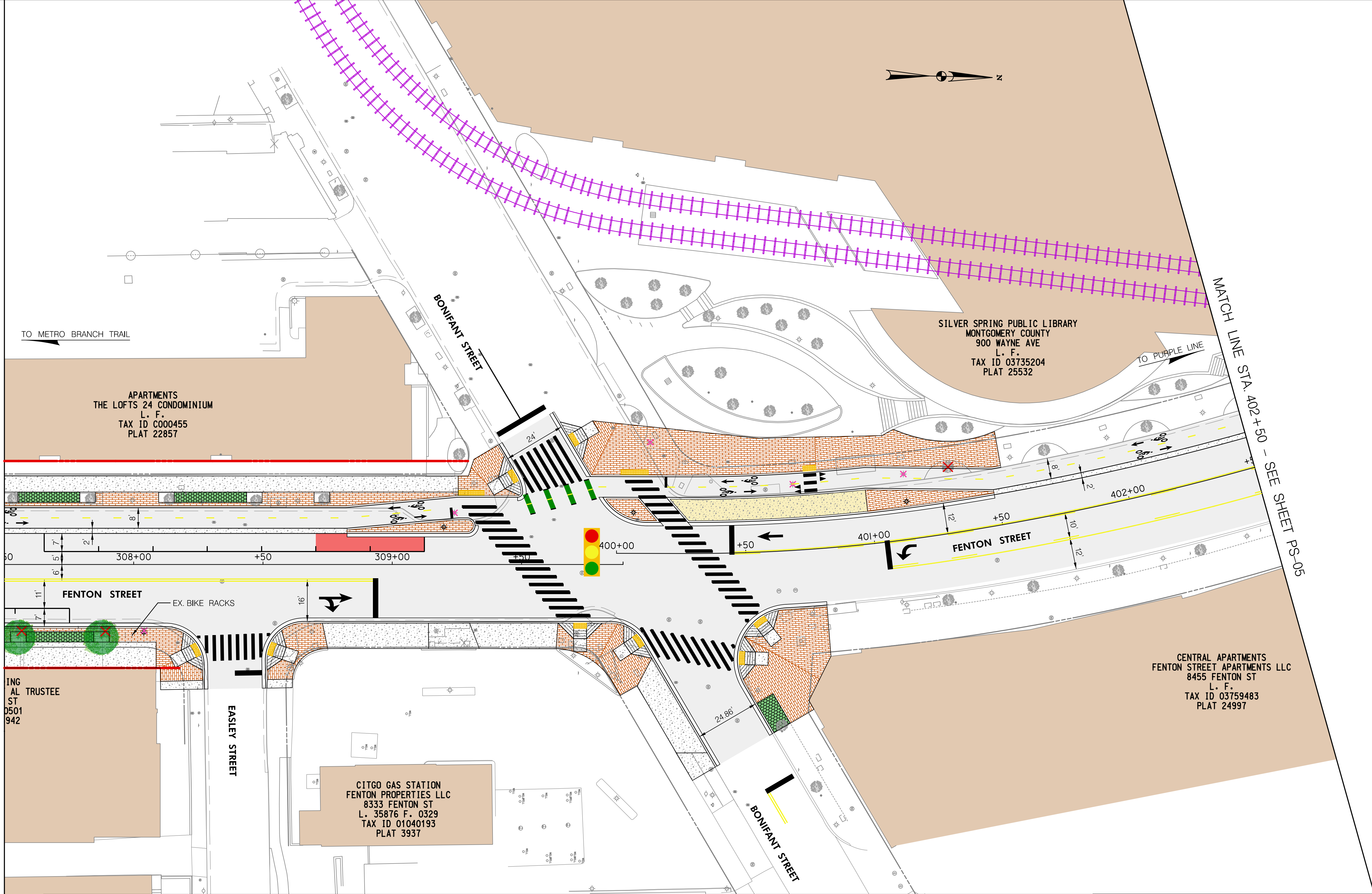
PS-03



Wednesday, November 11, 2020 AT 10:16 AM  
 U:\202601401\24 BPPA - Fenton Street\700 CADD\700 Sheet\pHD-PD4F4\_FentonStreet.dgn



MATCH LINE STA. 307+50 - SEE SHEET PS-03



MATCH LINE STA. 402+50 - SEE SHEET PS-05

LEGEND	
	PROP. DETECTABLE WARNING SURFACE
	PROP. ASPHALT PAVEMENT
	PROP. CONCRETE
	PROP. BRICK PAVERS
	PROP. SWM/BMP
	PROP. CAFE SEATING
	PROP. BUS STOP
	CAPITAL BIKE SHARE
	BUILDING
	PROP. GEOMETRY
	EX. GEOMETRY
	PROP. RIGHT OF WAY LINE
	EX. RIGHT OF WAY LINE
	PROP. FENCE
	EX. FENCE
	PROP. STREET LIGHT
	EX. STREET LIGHT TO BE REMOVED
	EX. STREET LIGHT TO REMAIN
	PROP. UTILITY POLE
	EX. UTILITY POLE TO BE REMOVED
	EX. UTILITY POLE TO REMIAN
	PROP. STREET TREE
	EX. STREET TREE TO BE REMOVED
	EX. STREET TREE TO REMAIN
	PROP. FIRE HYDRANT
	EX. FIRE HYDRANT TO BE REMOVED
	EX. FIRE HYDRANT TO REMIAN
	EX. GAS VALVE
	EX. SANITARY SEWER MANHOLE
	EX. TELECOM MANHOLE
	EX. ELECTRIC MAN HOLE
	EX. WATER VALVE
	EX. STORM DRAIN MANHOLE
	PROP. HAWK SIGNAL (BY OTHERS)
	AM LOADING ZONE
	PROP. PURPLE LINE
	EX. TRAFFIC SIGNAL

DEPARTMENT OF TRANSPORTATION  
 DIVISION OF TRANSPORTATION ENGINEERING  
 MONTGOMERY COUNTY, MARYLAND

FENTON STREET BIKEWAY STUDY  
 ALTERNATIVE F

SCALE: 1"=20' SHEET 04 of 08

PS-04

TO METRO BRANCH TRAIL

TO PURPLE LINE

APARTMENTS  
 THE LOFTS 24 CONDOMINIUM  
 L. F.  
 TAX ID C000455  
 PLAT 22857

SILVER SPRING PUBLIC LIBRARY  
 MONTGOMERY COUNTY  
 900 WAYNE AVE  
 L. F.  
 TAX ID 03735204  
 PLAT 25532

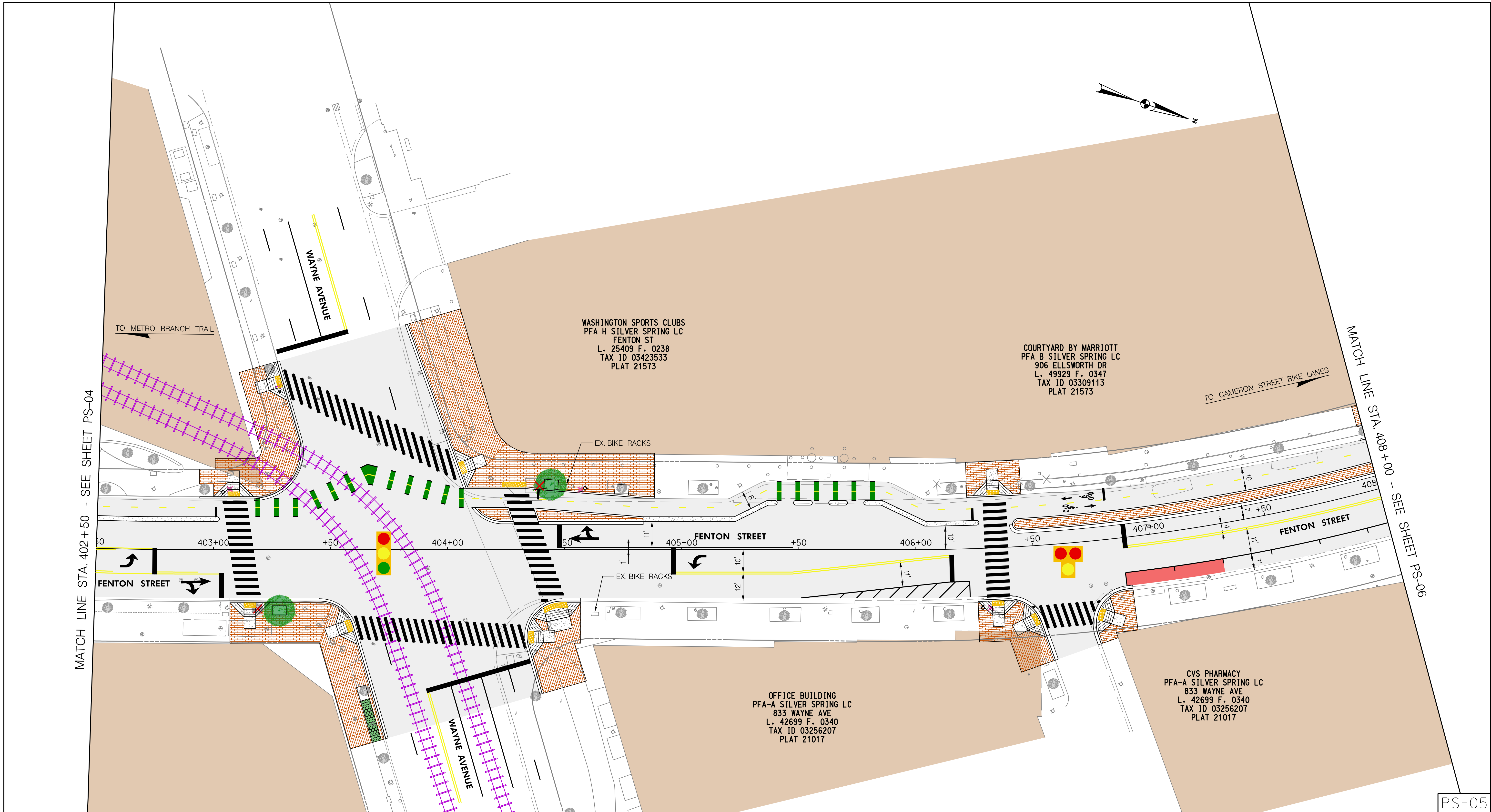
ING AL TRUSTEE  
 ST  
 0501  
 942

EASLEY STREET

CITGO GAS STATION  
 FENTON PROPERTIES LLC  
 8333 FENTON ST  
 L. 35876 F. 0329  
 TAX ID 01040193  
 PLAT 3937

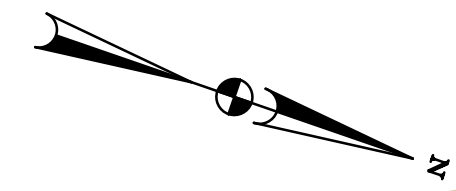
CENTRAL APARTMENTS  
 FENTON STREET APARTMENTS LLC  
 8455 FENTON ST  
 L. F.  
 TAX ID 03759483  
 PLAT 24997

Wednesday, November 11, 2020 AT 10:16 AM  
 U:\202601401\24 BPPA - Fenton Street\700 CADD\700 Sheet\pHD-PD\F5\_FentonStreet.dgn



MATCH LINE STA. 402+50 - SEE SHEET PS-04

MATCH LINE STA. 408+00 - SEE SHEET PS-06

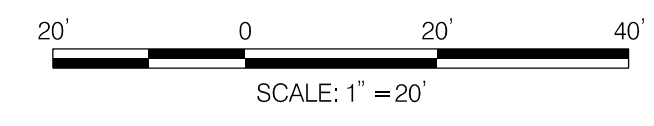


WASHINGTON SPORTS CLUBS  
 PFA H SILVER SPRING LC  
 FENTON ST  
 L. 25409 F. 0238  
 TAX ID 03423533  
 PLAT 21573

COURTYARD BY MARRIOTT  
 PFA B SILVER SPRING LC  
 906 ELLSWORTH DR  
 L. 49929 F. 0347  
 TAX ID 03309113  
 PLAT 21573

OFFICE BUILDING  
 PFA-A SILVER SPRING LC  
 833 WAYNE AVE  
 L. 42699 F. 0340  
 TAX ID 03256207  
 PLAT 21017

CVS PHARMACY  
 PFA-A SILVER SPRING LC  
 833 WAYNE AVE  
 L. 42699 F. 0340  
 TAX ID 03256207  
 PLAT 21017



LEGEND	
	PROP. DETECTABLE WARNING SURFACE
	PROP. ASPHALT PAVEMENT
	PROP. CONCRETE
	PROP. BRICK PAVERS
	PROP. SWM/BMP
	PROP. CAFE SEATING
	PROP. BUS STOP
	CAPITAL BIKE SHARE
	BUILDING
	PROP. GEOMETRY
	EX. GEOMETRY
	PROP. RIGHT OF WAY LINE
	EX. RIGHT OF WAY LINE
	PROP. FENCE
	EX. FENCE
	PROP. STREET LIGHT
	EX. STREET LIGHT TO BE REMOVED
	EX. STREET LIGHT TO REMAIN
	PROP. UTILITY POLE
	EX. UTILITY POLE TO BE REMOVED
	EX. UTILITY POLE TO REMIAN
	PROP. STREET TREE
	EX. STREET TREE TO BE REMOVED
	EX. STREET TREE TO REMAIN
	PROP. FIRE HYDRANT
	EX. FIRE HYDRANT TO BE REMOVED
	EX. FIRE HYDRANT TO REMIAN
	EX. GAS VALVE
	EX. SANITARY SEWER MANHOLE
	EX. TELECOM MANHOLE
	EX. ELECTRIC MAN HOLE
	EX. WATER VALVE
	EX. STORM DRAIN MANHOLE
	PROP. HAWK SIGNAL (BY OTHERS)
	AM LOADING ZONE
	PROP. PURPLE LINE
	EX. TRAFFIC SIGNAL

DEPARTMENT OF TRANSPORTATION  
 DIVISION OF TRANSPORTATION ENGINEERING  
 MONTGOMERY COUNTY, MARYLAND

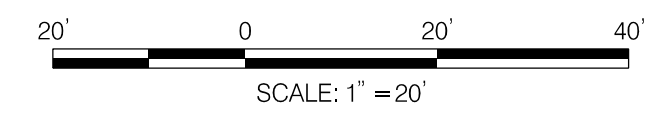
FENTON STREET BIKEWAY STUDY  
 ALTERNATIVE F

SCALE: 1"=20'

SHEET 05 of 08

PS-05

Wednesday, November 11, 2020 AT 10:16 AM  
 U:\202601401\24 BPPA - Fenton Street\700 CADD\700 Sheet\pHD-P04F6\_FentonStreet.dgn



LEGEND	
	PROP. DETECTABLE WARNING SURFACE
	PROP. ASPHALT PAVEMENT
	PROP. CONCRETE
	PROP. BRICK PAVERS
	PROP. SWM/BMP
	PROP. CAFE SEATING
	PROP. BUS STOP
	CAPITAL BIKE SHARE
	BUILDING
	PROP. GEOMETRY
	EX. GEOMETRY
	PROP. RIGHT OF WAY LINE
	EX. RIGHT OF WAY LINE
	PROP. FENCE
	EX. FENCE
	PROP. STREET LIGHT
	EX. STREET LIGHT TO BE REMOVED
	EX. STREET LIGHT TO REMAIN
	PROP. UTILITY POLE
	EX. UTILITY POLE TO BE REMOVED
	EX. UTILITY POLE TO REMAIN
	PROP. STREET TREE
	EX. STREET TREE TO BE REMOVED
	EX. STREET TREE TO REMAIN
	PROP. FIRE HYDRANT
	EX. FIRE HYDRANT TO BE REMOVED
	EX. FIRE HYDRANT TO REMAIN
	EX. GAS VALVE
	EX. SANITARY SEWER MANHOLE
	EX. TELECOM MANHOLE
	EX. ELECTRIC MAN HOLE
	EX. WATER VALVE
	EX. STORM DRAIN MANHOLE
	PROP. HAWK SIGNAL (BY OTHERS)
	AM LOADING ZONE
	PROP. PURPLE LINE
	EX. TRAFFIC SIGNAL

MATCH LINE STA. 408+00 - SEE SHEET PS-05

TO PURPLE LINE

ELLSWORTH PLACE  
 AVANTE ELLSWORTH VEN I LLC  
 8645 COLESVILLE RD  
 L. F. 56479 F. 0121  
 TAX ID 02897551  
 PLAT 5549

MCDOT PARKING GARAGE #61  
 MONTGOMERY COUNTY  
 ROEDER RD  
 L. F.  
 TAX ID 03279414  
 PLAT 21284

TO CAMERON STREET BIKE LANES

MATCH LINE STA. 501+00 - SEE SHEET PS-07

PS-06

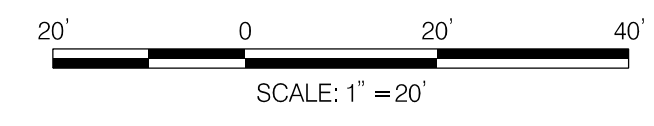
DEPARTMENT OF TRANSPORTATION  
 DIVISION OF TRANSPORTATION ENGINEERING  
 MONTGOMERY COUNTY, MARYLAND

FENTON STREET BIKEWAY STUDY  
 ALTERNATIVE F

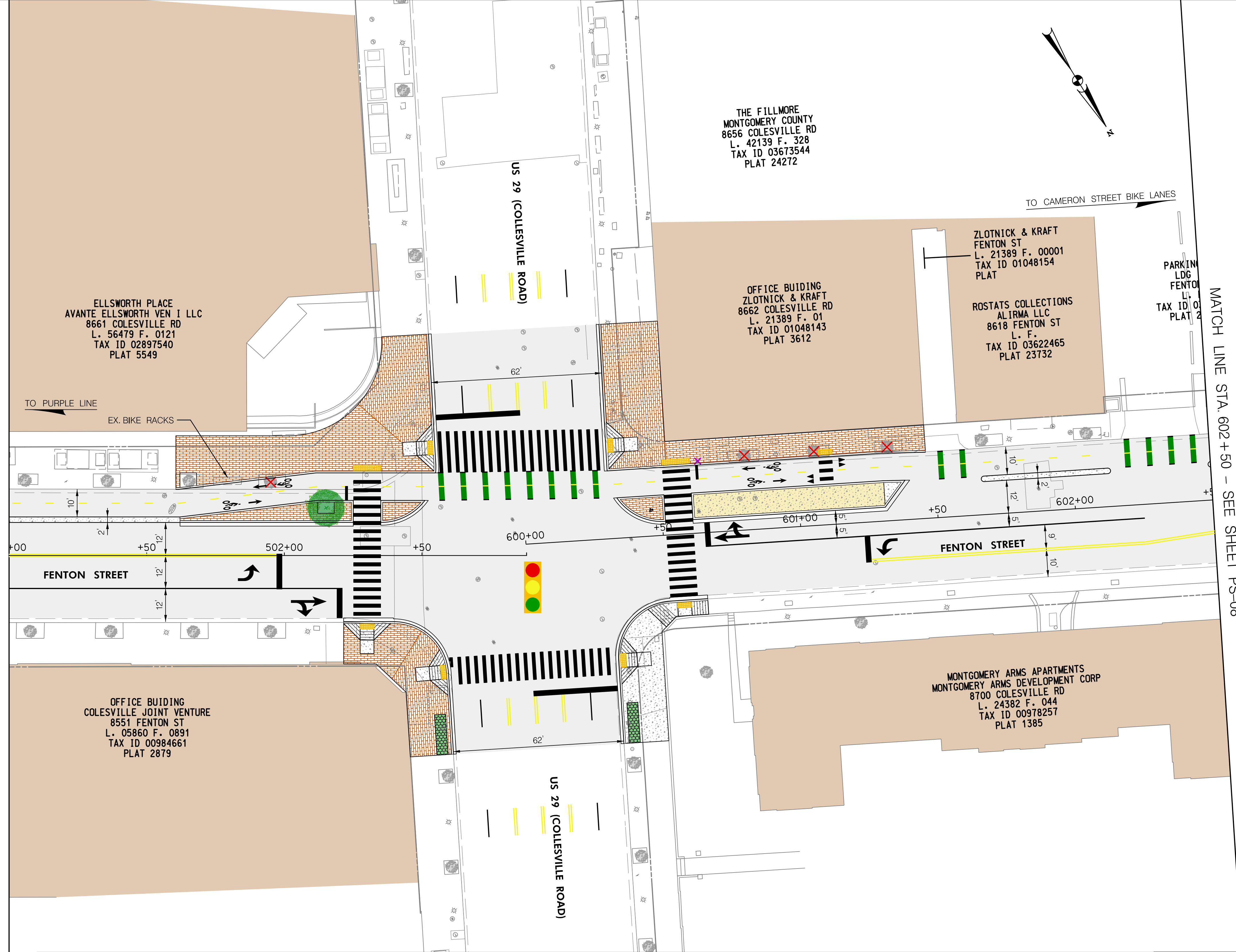
SCALE: 1"=20'

SHEET 06 of 08

Wednesday, November 11, 2020 AT 10:16 AM  
 U:\202601401\24 BPPA - Fenton Street\700 CADD\700 Sheet\pHD-PD4F7\_FentonStreet.dgn



MATCH LINE STA. 501+00 - SEE SHEET PS-06



MATCH LINE STA. 602+50 - SEE SHEET PS-08

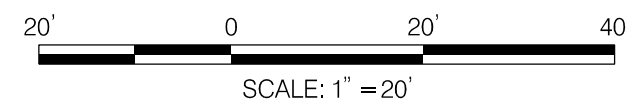
LEGEND	
	PROP. DETECTABLE WARNING SURFACE
	PROP. ASPHALT PAVEMENT
	PROP. CONCRETE
	PROP. BRICK PAVERS
	PROP. SWM/BMP
	PROP. CAFE SEATING
	PROP. BUS STOP
	CAPITAL BIKE SHARE
	BUILDING
	PROP. GEOMETRY
	EX. GEOMETRY
	PROP. RIGHT OF WAY LINE
	EX. RIGHT OF WAY LINE
	PROP. FENCE
	EX. FENCE
	PROP. STREET LIGHT
	EX. STREET LIGHT TO BE REMOVED
	EX. STREET LIGHT TO REMAIN
	PROP. UTILITY POLE
	EX. UTILITY POLE TO BE REMOVED
	EX. UTILITY POLE TO REMIAN
	PROP. STREET TREE
	EX. STREET TREE TO BE REMOVED
	EX. STREET TREE TO REMAIN
	PROP. FIRE HYDRANT
	EX. FIRE HYDRANT TO BE REMOVED
	EX. FIRE HYDRANT TO REMIAN
	EX. GAS VALVE
	EX. SANITARY SEWER MANHOLE
	EX. TELECOM MANHOLE
	EX. ELECTRIC MAN HOLE
	EX. WATER VALVE
	EX. STORM DRAIN MANHOLE
	PROP. HAWK SIGNAL (BY OTHERS)
	AM LOADING ZONE
	PROP. PURPLE LINE
	EX. TRAFFIC SIGNAL

DEPARTMENT OF TRANSPORTATION  
 DIVISION OF TRANSPORTATION ENGINEERING  
 MONTGOMERY COUNTY, MARYLAND

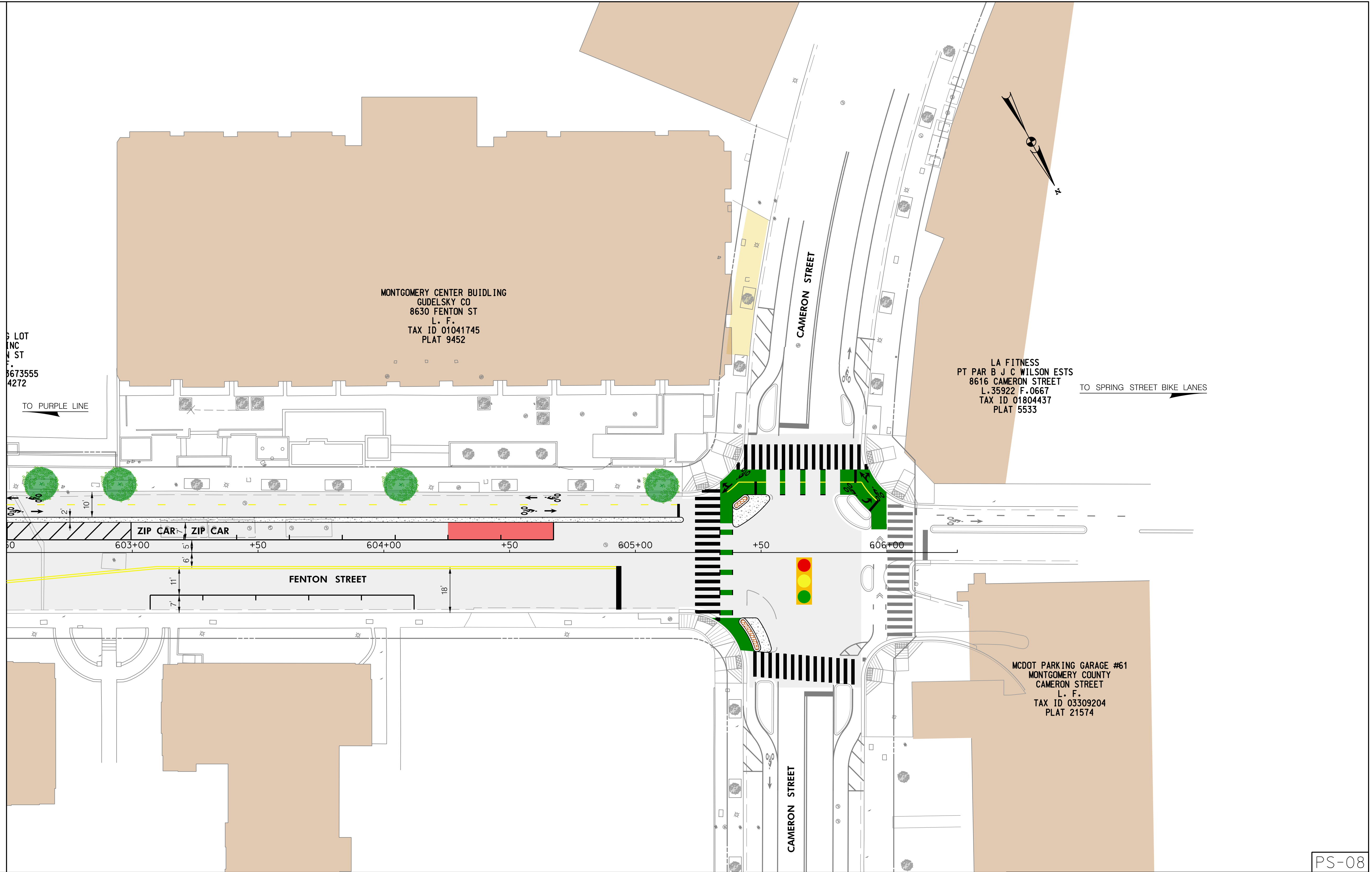
FENTON STREET BIKEWAY STUDY  
 ALTERNATIVE F

PS-07

Wednesday, November 11, 2020 AT 10:17 AM  
 U:\202601401\24 BPPA - Fenton Street\700 CADD\700 Sheet\pHD-PD\F8\_FentonStreet.dgn



MATCH LINE STA. 602+50 - SEE SHEET PS-07



LEGEND	
PROP. DETECTABLE WARNING SURFACE	BUILDING
PROP. ASPHALT PAVEMENT	PROP. GEOMETRY
PROP. CONCRETE	EX. GEOMETRY
PROP. BRICK PAVERS	PROP. RIGHT OF WAY LINE
PROP. SWM/BMP	EX. RIGHT OF WAY LINE
PROP. CAFE SEATING	PROP. FENCE
PROP. BUS STOP	EX. FENCE
CAPITAL BIKE SHARE	PROP. STREET LIGHT
EX. STREET LIGHT TO BE REMOVED	EX. STREET TREE TO BE REMOVED
EX. STREET LIGHT TO REMAIN	EX. STREET TREE TO REMAIN
PROP. UTILITY POLE	EX. ELECTRIC MAN HOLE
EX. UTILITY POLE TO BE REMOVED	EX. WATER VALVE
EX. UTILITY POLE TO REMAIN	EX. STORM DRAIN MANHOLE
PROP. STREET TREE	PROP. FIRE HYDRANT
EX. STREET TREE TO BE REMOVED	EX. FIRE HYDRANT TO BE REMOVED
PROP. FIRE HYDRANT	EX. FIRE HYDRANT TO REMAIN
EX. FIRE HYDRANT TO BE REMOVED	PROP. PURPLE LINE
EX. FIRE HYDRANT TO REMAIN	EX. GAS VALVE
EX. GAS VALVE	EX. SANITARY SEWER MANHOLE
EX. SANITARY SEWER MANHOLE	EX. TRAFFIC SIGNAL
EX. TELECOM MANHOLE	AM LOADING ZONE

DEPARTMENT OF TRANSPORTATION  
 DIVISION OF TRANSPORTATION ENGINEERING  
 MONTGOMERY COUNTY, MARYLAND

FENTON STREET BIKEWAY STUDY  
 ALTERNATIVE F

PS-08

LOT  
 INC  
 ST  
 673555  
 4272

MONTGOMERY CENTER BUILDING  
 GUELSKY CO  
 8630 FENTON ST  
 L. F.  
 TAX ID 01041745  
 PLAT 9452

LA FITNESS  
 PT PAR B J C WILSON ESTS  
 8616 CAMERON STREET  
 L. 35922 F. 0667  
 TAX ID 01804437  
 PLAT 5533

MCDOT PARKING GARAGE #61  
 MONTGOMERY COUNTY  
 CAMERON STREET  
 L. F.  
 TAX ID 03309204  
 PLAT 21574

TO SPRING STREET BIKE LANES