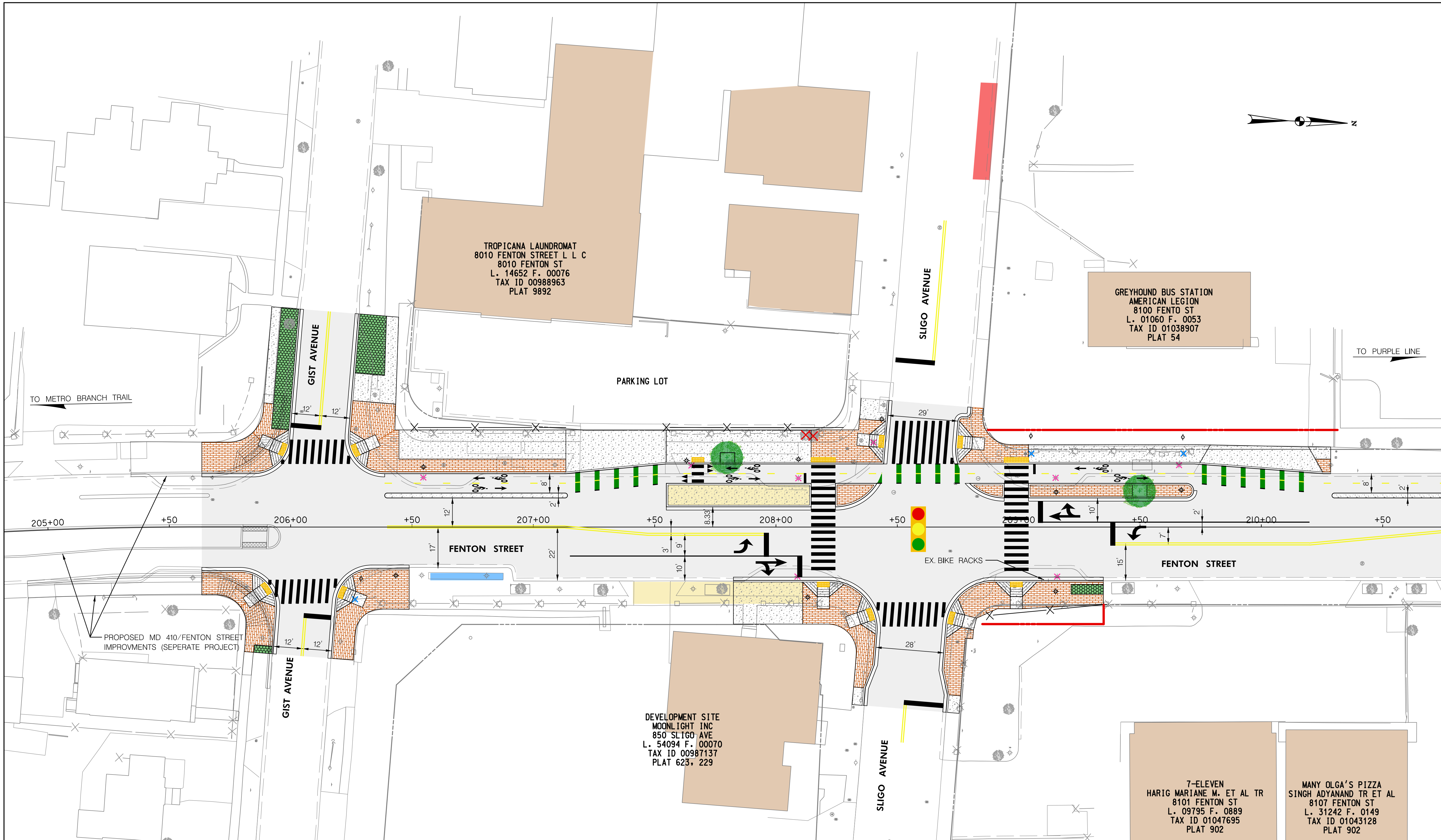
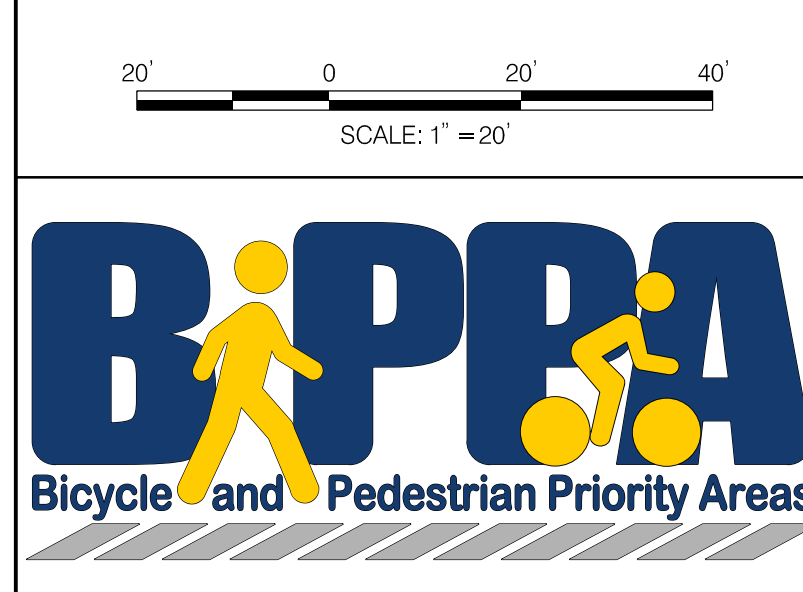


Wednesday, November 11, 2020 AT 10:17 AM  
 U:\202601401\24 BPPA - Fenton Street\700 CADD\700 Sheet\pHD-PD4GI\_FentonStreet.dgn



MATCH LINE STA 210+75 - SEE SHEET PS-02

PS-01



| LEGEND |                                  |
|--------|----------------------------------|
|        | PROP. DETECTABLE WARNING SURFACE |
|        | PROP. ASPHALT PAVEMENT           |
|        | PROP. CONCRETE                   |
|        | PROP. BRICK PAVERS               |
|        | PROP. SWM/BMP                    |
|        | PROP. CAFE SEATING               |
|        | PROP. BUS STOP                   |
|        | CAPITAL BIKE SHARE               |
|        | BUILDING                         |
|        | PROP. GEOMETRY                   |
|        | EX. GEOMETRY                     |
|        | PROP. RIGHT OF WAY LINE          |
|        | EX. RIGHT OF WAY LINE            |
|        | PROP. FENCE                      |
|        | EX. FENCE                        |
|        | PROP. STREET LIGHT               |
|        | EX. STREET LIGHT TO BE REMOVED   |
|        | EX. STREET LIGHT TO REMAIN       |
|        | PROP. UTILITY POLE               |
|        | EX. UTILITY POLE TO BE REMOVED   |
|        | EX. UTILITY POLE TO REMIAN       |
|        | PROP. STREET TREE                |
|        | EX. STREET TREE TO BE REMOVED    |
|        | EX. STREET TREE TO REMAIN        |
|        | PROP. FIRE HYDRANT               |
|        | EX. FIRE HYDRANT TO BE REMOVED   |
|        | EX. FIRE HYDRANT TO REMIAN       |
|        | EX. GAS VALVE                    |
|        | EX. SANITARY SEWER MANHOLE       |
|        | EX. TELECOM MANHOLE              |
|        | EX. ELECTRIC MAN HOLE            |
|        | EX. WATER VALVE                  |
|        | EX. STORM DRAIN MANHOLE          |
|        | PROP. HAWK SIGNAL (BY OTHERS)    |
|        | AM LOADING ZONE                  |
|        | PROP. PURPLE LINE                |
|        | EX. TRAFFIC SIGNAL               |

DEPARTMENT OF TRANSPORTATION  
 DIVISION OF TRANSPORTATION ENGINEERING  
 MONTGOMERY COUNTY, MARYLAND

FENTON STREET BIKEWAY STUDY  
 ALTERNATIVE G

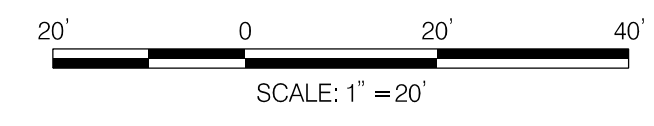
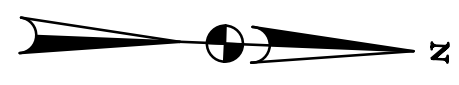
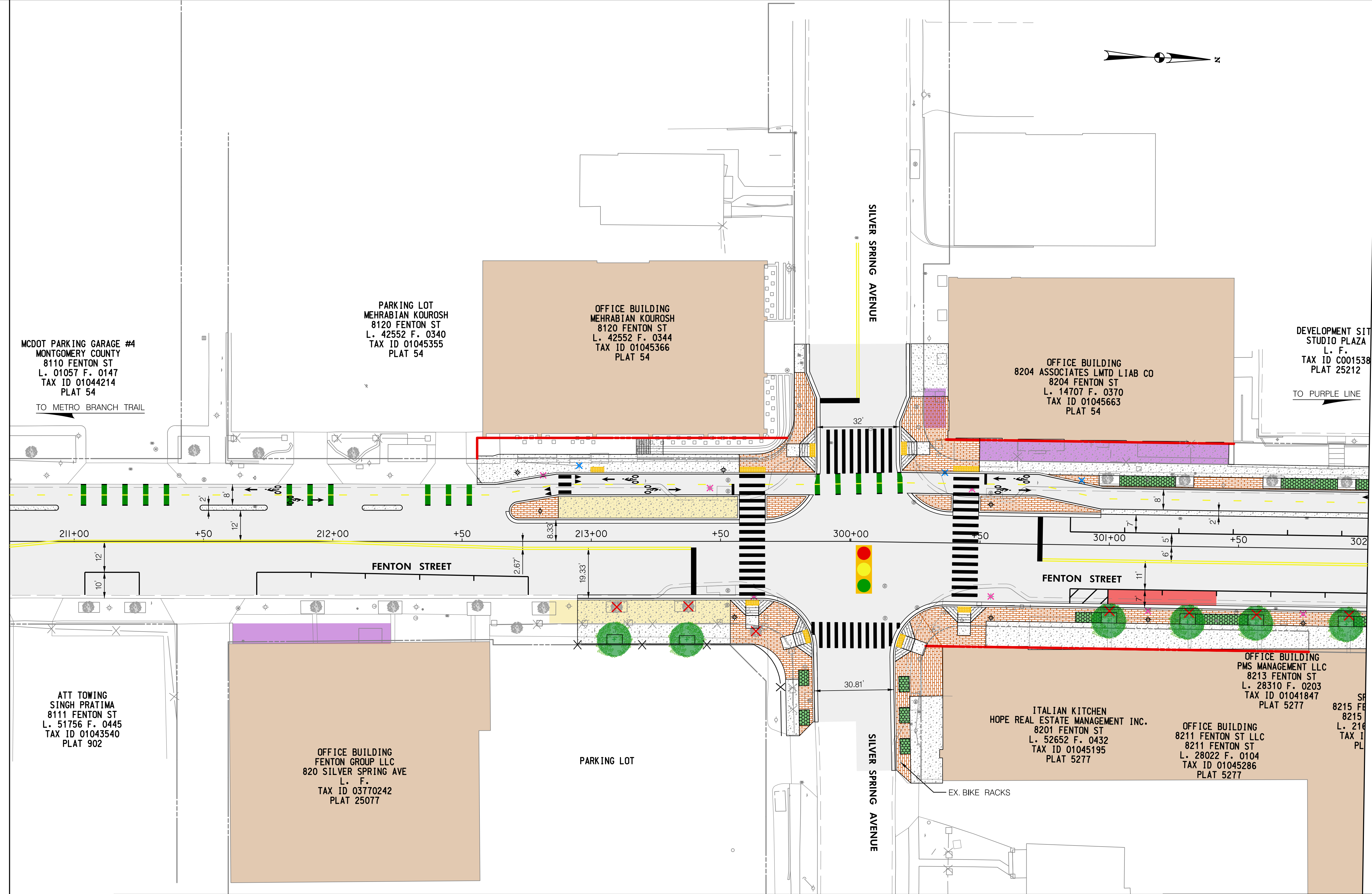
SCALE: 1"=20' SHEET 01 of 08

Wednesday, November 11, 2020 AT 10:17 AM  
 U:\202601401\24 BPPA - Fenton Street\700 CADD\700 Sheet\pHD-P0402\_FentonStreet.dgn



MATCH LINE STA. 210+75 - SEE SHEET PS-01

MATCH LINE STA. 302+00 - SEE SHEET PS-03



| LEGEND |                                  |
|--------|----------------------------------|
|        | PROP. DETECTABLE WARNING SURFACE |
|        | PROP. ASPHALT PAVEMENT           |
|        | PROP. CONCRETE                   |
|        | PROP. BRICK PAVERS               |
|        | PROP. SWM/BMP                    |
|        | PROP. CAFE SEATING               |
|        | PROP. BUS STOP                   |
|        | CAPITAL BIKE SHARE               |
|        | BUILDING                         |
|        | PROP. GEOMETRY                   |
|        | EX. GEOMETRY                     |
|        | PROP. RIGHT OF WAY LINE          |
|        | EX. RIGHT OF WAY LINE            |
|        | PROP. FENCE                      |
|        | EX. FENCE                        |
|        | PROP. STREET LIGHT               |
|        | EX. STREET LIGHT TO BE REMOVED   |
|        | EX. STREET LIGHT TO REMAIN       |
|        | PROP. UTILITY POLE               |
|        | EX. UTILITY POLE TO BE REMOVED   |
|        | EX. UTILITY POLE TO REMAIN       |
|        | PROP. STREET TREE                |
|        | EX. STREET TREE TO BE REMOVED    |
|        | EX. STREET TREE TO REMAIN        |
|        | PROP. FIRE HYDRANT               |
|        | EX. FIRE HYDRANT TO BE REMOVED   |
|        | EX. FIRE HYDRANT TO REMAIN       |
|        | EX. GAS VALVE                    |
|        | EX. SANITARY SEWER MANHOLE       |
|        | EX. TELECOM MANHOLE              |
|        | EX. ELECTRIC MAN HOLE            |
|        | EX. WATER VALVE                  |
|        | EX. STORM DRAIN MANHOLE          |
|        | PROP. HAWK SIGNAL (BY OTHERS)    |
|        | AM LOADING ZONE                  |
|        | PROP. PURPLE LINE                |
|        | EX. TRAFFIC SIGNAL               |

DEPARTMENT OF TRANSPORTATION  
 DIVISION OF TRANSPORTATION ENGINEERING  
 MONTGOMERY COUNTY, MARYLAND

FENTON STREET BIKEWAY STUDY  
 ALTERNATIVE G

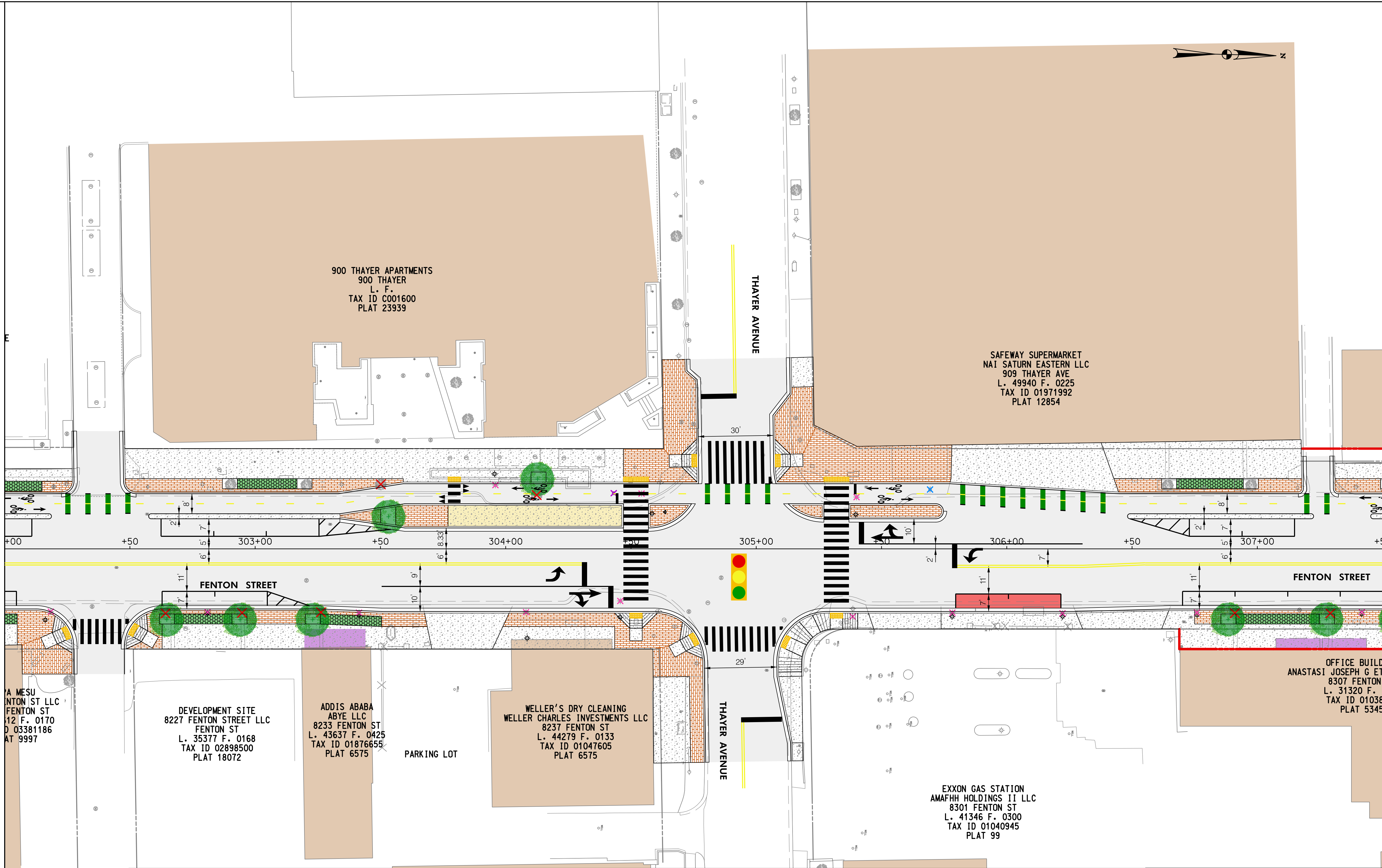
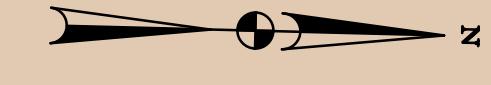
SCALE: 1"=20' SHEET 02 of 08

PS-02

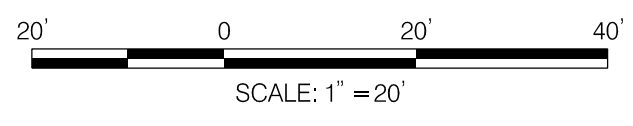
Wednesday, November 11, 2020 AT 10:17 AM  
 U:\202601401\24 BPPA - Fenton Street\CADD\700 Sheet\pHD-P0463\_FentonStreet.dgn

MATCH LINE STA. 302+00 - SEE SHEET PS-02

MATCH LINE STA. 307+50 - SEE SHEET PS-04



PS-03

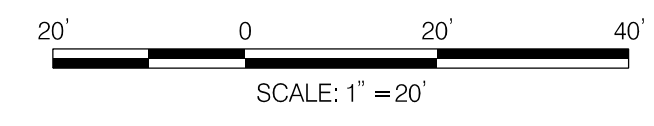


| LEGEND |                                  |
|--------|----------------------------------|
|        | PROP. DETECTABLE WARNING SURFACE |
|        | PROP. ASPHALT PAVEMENT           |
|        | PROP. CONCRETE                   |
|        | PROP. BRICK PAVERS               |
|        | PROP. SWM/BMP                    |
|        | PROP. CAFE SEATING               |
|        | PROP. BUS STOP                   |
|        | CAPITAL BIKE SHARE               |
|        | BUILDING                         |
|        | PROP. GEOMETRY                   |
|        | EX. GEOMETRY                     |
|        | PROP. RIGHT OF WAY LINE          |
|        | EX. RIGHT OF WAY LINE            |
|        | PROP. FENCE                      |
|        | EX. FENCE                        |
|        | PROP. STREET LIGHT               |
|        | EX. STREET LIGHT TO BE REMOVED   |
|        | EX. STREET LIGHT TO REMAIN       |
|        | PROP. UTILITY POLE               |
|        | EX. UTILITY POLE TO BE REMOVED   |
|        | EX. UTILITY POLE TO REMAIN       |
|        | PROP. STREET TREE                |
|        | EX. STREET TREE TO BE REMOVED    |
|        | EX. STREET TREE TO REMAIN        |
|        | PROP. FIRE HYDRANT               |
|        | EX. FIRE HYDRANT TO BE REMOVED   |
|        | EX. FIRE HYDRANT TO REMAIN       |
|        | EX. GAS VALVE                    |
|        | EX. SANITARY SEWER MANHOLE       |
|        | EX. TELECOM MANHOLE              |
|        | EX. ELECTRIC MAN HOLE            |
|        | EX. WATER VALVE                  |
|        | EX. STORM DRAIN MANHOLE          |
|        | PROP. HAWK SIGNAL (BY OTHERS)    |
|        | AM LOADING ZONE                  |
|        | PROP. PURPLE LINE                |
|        | EX. TRAFFIC SIGNAL               |

DEPARTMENT OF TRANSPORTATION  
 DIVISION OF TRANSPORTATION ENGINEERING  
 MONTGOMERY COUNTY, MARYLAND

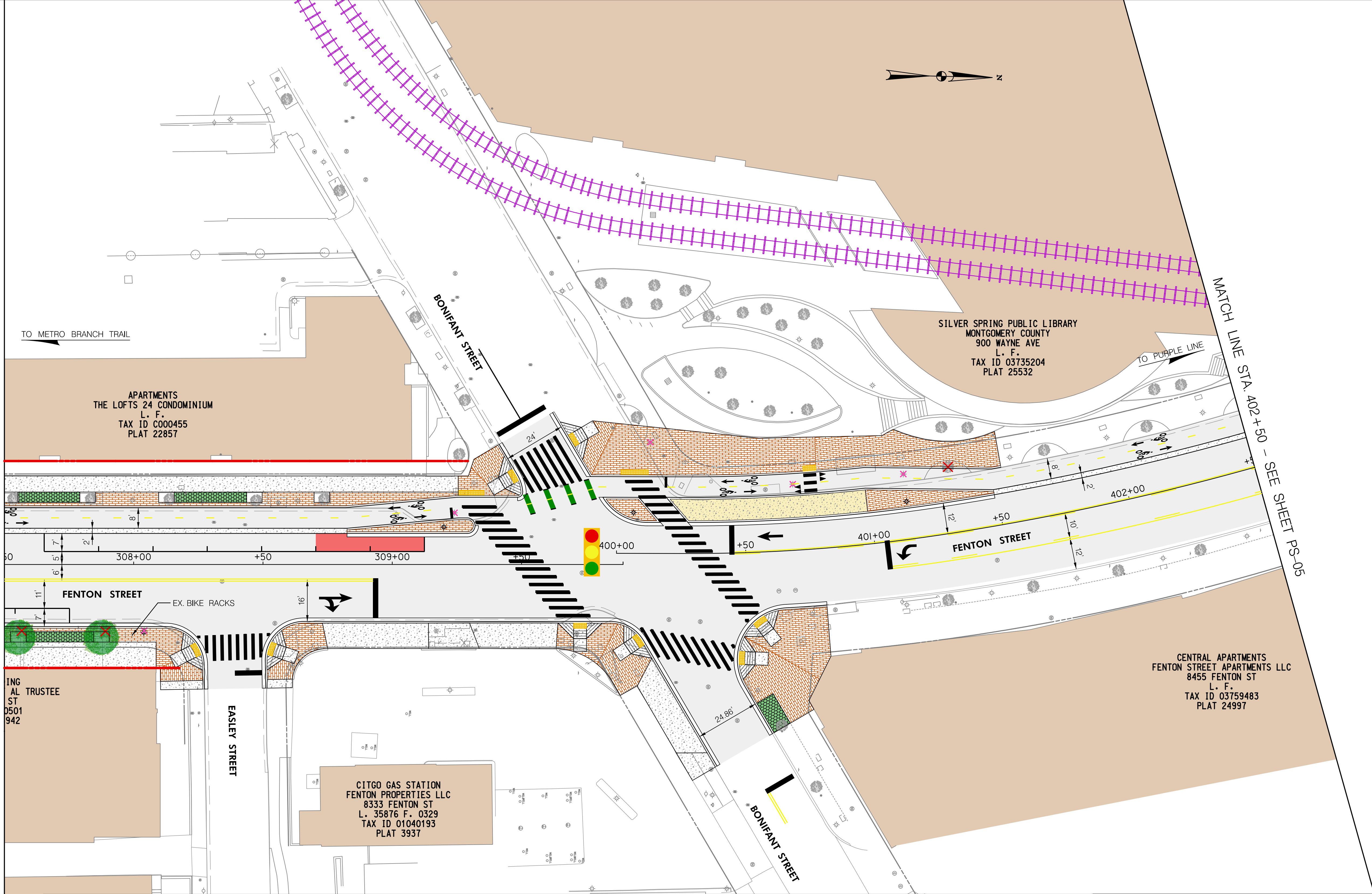
FENTON STREET BIKEWAY STUDY  
 ALTERNATIVE G

Wednesday, November 11, 2020 AT 10:17 AM  
 U:\202601401\24 BPPA - Fenton Street\700 CADD\700 Sheet\pHD-PD464\_FentonStreet.dgn



MATCH LINE STA. 307+50 - SEE SHEET PS-03

MATCH LINE STA. 402+50 - SEE SHEET PS-05



| LEGEND |                                  |
|--------|----------------------------------|
|        | PROP. DETECTABLE WARNING SURFACE |
|        | PROP. ASPHALT PAVEMENT           |
|        | PROP. CONCRETE                   |
|        | PROP. BRICK PAVERS               |
|        | PROP. SWM/BMP                    |
|        | PROP. CAFE SEATING               |
|        | PROP. BUS STOP                   |
|        | CAPITAL BIKE SHARE               |
|        | BUILDING                         |
|        | PROP. GEOMETRY                   |
|        | EX. GEOMETRY                     |
|        | PROP. RIGHT OF WAY LINE          |
|        | EX. RIGHT OF WAY LINE            |
|        | PROP. FENCE                      |
|        | EX. FENCE                        |
|        | PROP. STREET LIGHT               |
|        | EX. STREET LIGHT TO BE REMOVED   |
|        | EX. STREET LIGHT TO REMAIN       |
|        | PROP. UTILITY POLE               |
|        | EX. UTILITY POLE TO BE REMOVED   |
|        | EX. UTILITY POLE TO REMAIN       |
|        | PROP. STREET TREE                |
|        | EX. STREET TREE TO BE REMOVED    |
|        | EX. STREET TREE TO REMAIN        |
|        | PROP. FIRE HYDRANT               |
|        | EX. FIRE HYDRANT TO BE REMOVED   |
|        | EX. FIRE HYDRANT TO REMAIN       |
|        | EX. GAS VALVE                    |
|        | EX. SANITARY SEWER MANHOLE       |
|        | EX. TELECOM MANHOLE              |
|        | EX. ELECTRIC MAN HOLE            |
|        | EX. WATER VALVE                  |
|        | EX. STORM DRAIN MANHOLE          |
|        | PROP. HAWK SIGNAL (BY OTHERS)    |
|        | AM LOADING ZONE                  |
|        | PROP. PURPLE LINE                |
|        | EX. TRAFFIC SIGNAL               |

DEPARTMENT OF TRANSPORTATION  
 DIVISION OF TRANSPORTATION ENGINEERING  
 MONTGOMERY COUNTY, MARYLAND

FENTON STREET BIKEWAY STUDY  
 ALTERNATIVE G

SCALE: 1"=20' SHEET 04 of 08

PS-04

APARTMENTS  
 THE LOFTS 24 CONDOMINIUM  
 L. F.  
 TAX ID C000455  
 PLAT 22857

SILVER SPRING PUBLIC LIBRARY  
 MONTGOMERY COUNTY  
 900 WAYNE AVE  
 L. F.  
 TAX ID 03735204  
 PLAT 25532

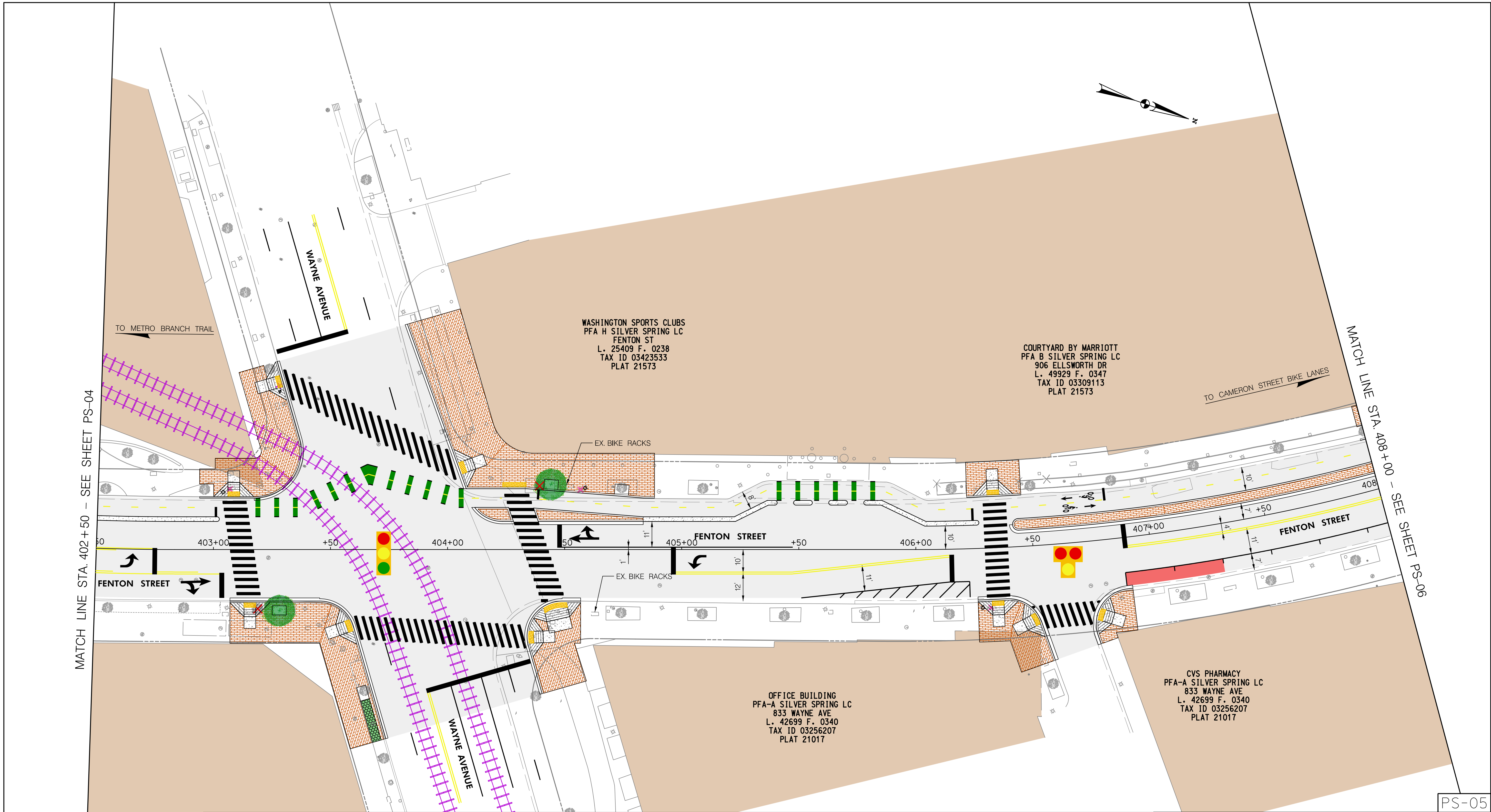
ING AL TRUSTEE  
 ST  
 0501  
 942

EASLEY STREET

CITGO GAS STATION  
 FENTON PROPERTIES LLC  
 8333 FENTON ST  
 L. 35876 F. 0329  
 TAX ID 01040193  
 PLAT 3937

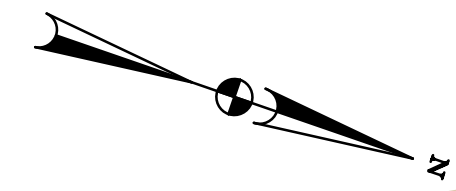
CENTRAL APARTMENTS  
 FENTON STREET APARTMENTS LLC  
 8455 FENTON ST  
 L. F.  
 TAX ID 03759483  
 PLAT 24997

Wednesday, November 11, 2020 AT 10:17 AM  
 U:\2026011401\24 BPPA - Fenton Street\700 CADD\700 Sheet\pHD-PD465\_FentonStreet.dgn



MATCH LINE STA. 402+50 - SEE SHEET PS-04

MATCH LINE STA. 408+00 - SEE SHEET PS-06

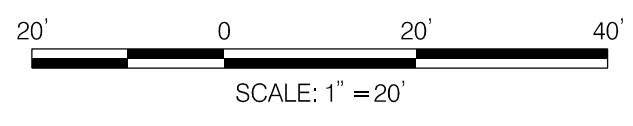


WASHINGTON SPORTS CLUBS  
 PFA H SILVER SPRING LC  
 FENTON ST  
 L. 25409 F. 0238  
 TAX ID 03423533  
 PLAT 21573

COURTYARD BY MARRIOTT  
 PFA B SILVER SPRING LC  
 906 ELLSWORTH DR  
 L. 49929 F. 0347  
 TAX ID 03309113  
 PLAT 21573

OFFICE BUILDING  
 PFA-A SILVER SPRING LC  
 833 WAYNE AVE  
 L. 42699 F. 0340  
 TAX ID 03256207  
 PLAT 21017

CVS PHARMACY  
 PFA-A SILVER SPRING LC  
 833 WAYNE AVE  
 L. 42699 F. 0340  
 TAX ID 03256207  
 PLAT 21017



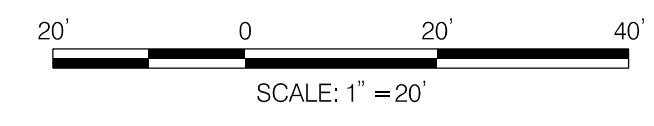
| LEGEND |                                  |
|--------|----------------------------------|
|        | PROP. DETECTABLE WARNING SURFACE |
|        | PROP. ASPHALT PAVEMENT           |
|        | PROP. CONCRETE                   |
|        | PROP. BRICK PAVERS               |
|        | PROP. SWM/BMP                    |
|        | PROP. CAFE SEATING               |
|        | PROP. BUS STOP                   |
|        | CAPITAL BIKE SHARE               |
|        | BUILDING                         |
|        | PROP. GEOMETRY                   |
|        | EX. GEOMETRY                     |
|        | PROP. RIGHT OF WAY LINE          |
|        | EX. RIGHT OF WAY LINE            |
|        | PROP. FENCE                      |
|        | EX. FENCE                        |
|        | PROP. STREET LIGHT               |
|        | EX. STREET LIGHT TO BE REMOVED   |
|        | EX. STREET LIGHT TO REMAIN       |
|        | PROP. UTILITY POLE               |
|        | EX. UTILITY POLE TO BE REMOVED   |
|        | EX. UTILITY POLE TO REMIAN       |
|        | PROP. STREET TREE                |
|        | EX. STREET TREE TO BE REMOVED    |
|        | EX. STREET TREE TO REMAIN        |
|        | PROP. FIRE HYDRANT               |
|        | EX. FIRE HYDRANT TO BE REMOVED   |
|        | EX. FIRE HYDRANT TO REMIAN       |
|        | EX. GAS VALVE                    |
|        | EX. SANITARY SEWER MANHOLE       |
|        | EX. TELECOM MANHOLE              |
|        | EX. ELECTRIC MAN HOLE            |
|        | EX. WATER VALVE                  |
|        | EX. STORM DRAIN MANHOLE          |
|        | PROP. HAWK SIGNAL (BY OTHERS)    |
|        | AM LOADING ZONE                  |
|        | PROP. PURPLE LINE                |
|        | EX. TRAFFIC SIGNAL               |

DEPARTMENT OF TRANSPORTATION  
 DIVISION OF TRANSPORTATION ENGINEERING  
 MONTGOMERY COUNTY, MARYLAND

FENTON STREET BIKEWAY STUDY  
 ALTERNATIVE G

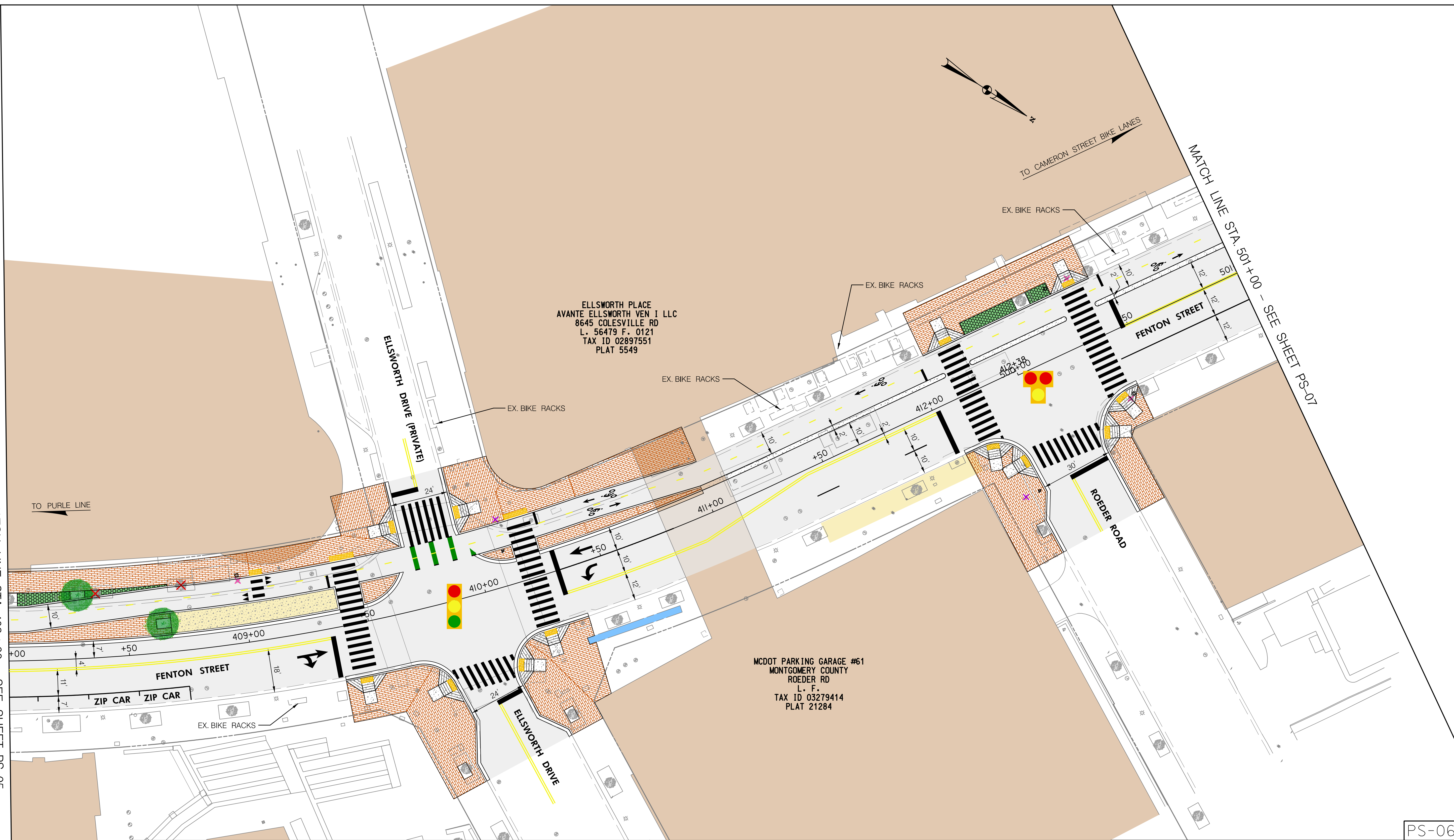
PS-05

Wednesday, November 11, 2020 AT 10:18 AM  
 U:\202601401\24 BPPA - Fenton Street\700 CADD\700 Sheet\pHD-P0466\_FentonStreet.dgn



MATCH LINE STA. 408+00 - SEE SHEET PS-05

MATCH LINE STA. 501+00 - SEE SHEET PS-07



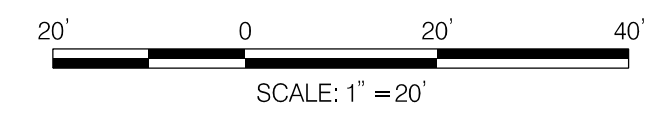
| LEGEND |                                  |
|--------|----------------------------------|
|        | PROP. DETECTABLE WARNING SURFACE |
|        | PROP. ASPHALT PAVEMENT           |
|        | PROP. CONCRETE                   |
|        | PROP. BRICK PAVERS               |
|        | PROP. SWM/BMP                    |
|        | PROP. CAFE SEATING               |
|        | PROP. BUS STOP                   |
|        | CAPITAL BIKE SHARE               |
|        | BUILDING                         |
|        | PROP. GEOMETRY                   |
|        | EX. GEOMETRY                     |
|        | PROP. RIGHT OF WAY LINE          |
|        | EX. RIGHT OF WAY LINE            |
|        | PROP. FENCE                      |
|        | EX. FENCE                        |
|        | PROP. STREET LIGHT               |
|        | EX. STREET LIGHT TO BE REMOVED   |
|        | EX. STREET LIGHT TO REMAIN       |
|        | PROP. UTILITY POLE               |
|        | EX. UTILITY POLE TO BE REMOVED   |
|        | EX. UTILITY POLE TO REMIAN       |
|        | PROP. STREET TREE                |
|        | EX. STREET TREE TO BE REMOVED    |
|        | EX. STREET TREE TO REMAIN        |
|        | PROP. FIRE HYDRANT               |
|        | EX. FIRE HYDRANT TO BE REMOVED   |
|        | EX. FIRE HYDRANT TO REMIAN       |
|        | EX. GAS VALVE                    |
|        | EX. SANITARY SEWER MANHOLE       |
|        | EX. TELECOM MANHOLE              |
|        | EX. ELECTRIC MAN HOLE            |
|        | EX. WATER VALVE                  |
|        | EX. STORM DRAIN MANHOLE          |
|        | PROP. HAWK SIGNAL (BY OTHERS)    |
|        | AM LOADING ZONE                  |
|        | PROP. PURPLE LINE                |
|        | EX. TRAFFIC SIGNAL               |

DEPARTMENT OF TRANSPORTATION  
 DIVISION OF TRANSPORTATION ENGINEERING  
 MONTGOMERY COUNTY, MARYLAND

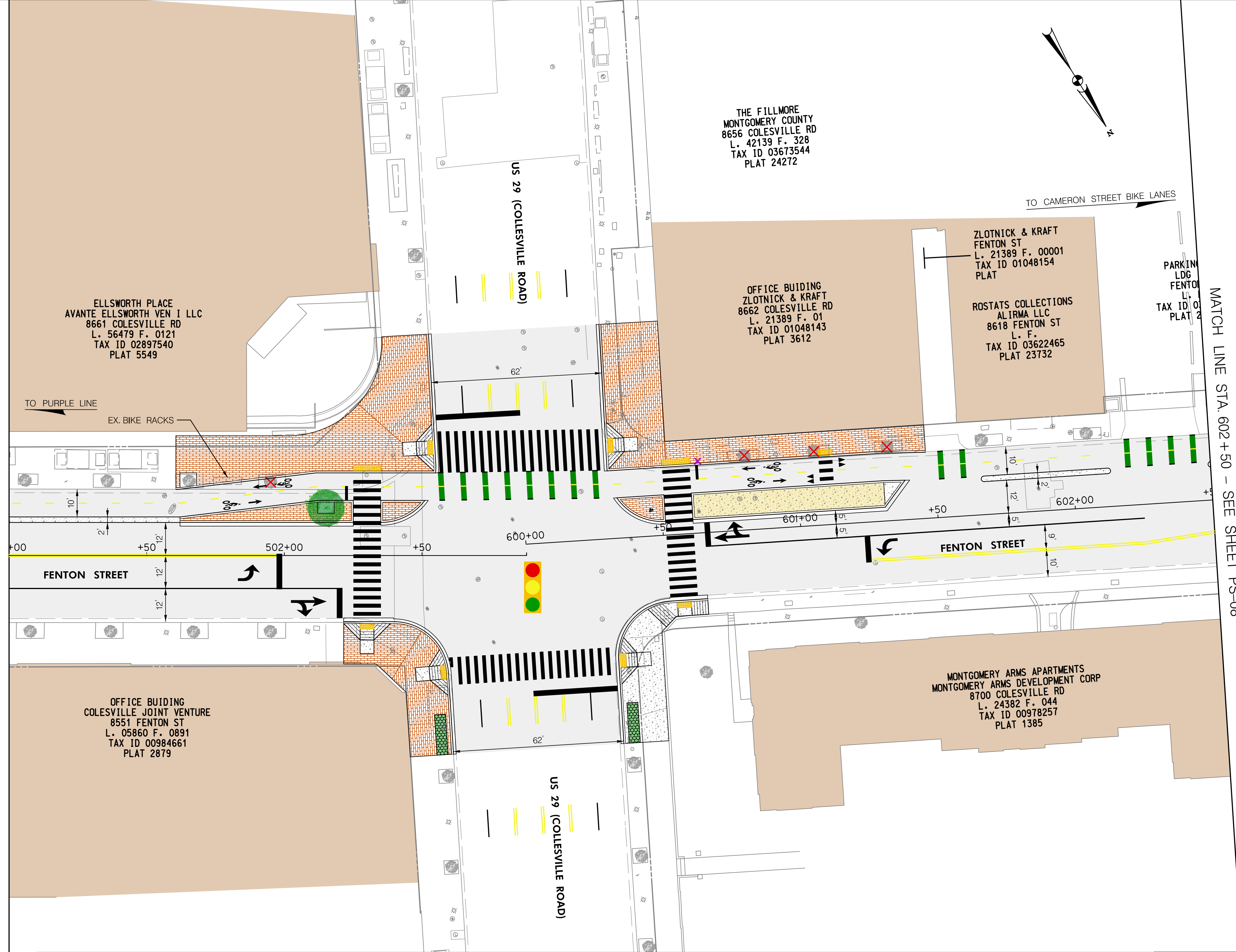
FENTON STREET BIKEWAY STUDY  
 ALTERNATIVE G

PS-06

Wednesday, November 11, 2020 AT 10:18 AM  
 U:\202601401\24 BPPA - Fenton Street\700 CADD\700 Sheet\pHD-PD467-FentonStreet.dgn



MATCH LINE STA. 501+00 - SEE SHEET PS-06



MATCH LINE STA. 602+50 - SEE SHEET PS-08

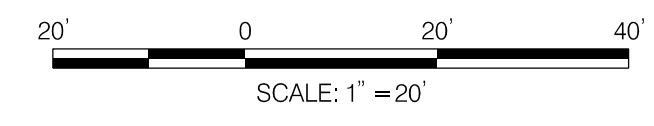
PS-07

| LEGEND |                                  |
|--------|----------------------------------|
|        | PROP. DETECTABLE WARNING SURFACE |
|        | PROP. ASPHALT PAVEMENT           |
|        | PROP. CONCRETE                   |
|        | PROP. BRICK PAVERS               |
|        | PROP. SWM/BMP                    |
|        | PROP. CAFE SEATING               |
|        | PROP. BUS STOP                   |
|        | CAPITAL BIKE SHARE               |
|        | BUILDING                         |
|        | PROP. GEOMETRY                   |
|        | EX. GEOMETRY                     |
|        | PROP. RIGHT OF WAY LINE          |
|        | EX. RIGHT OF WAY LINE            |
|        | PROP. FENCE                      |
|        | EX. FENCE                        |
|        | PROP. STREET LIGHT               |
|        | EX. STREET LIGHT TO BE REMOVED   |
|        | EX. STREET LIGHT TO REMAIN       |
|        | PROP. UTILITY POLE               |
|        | EX. UTILITY POLE TO BE REMOVED   |
|        | EX. UTILITY POLE TO REMAIN       |
|        | PROP. STREET TREE                |
|        | EX. STREET TREE TO BE REMOVED    |
|        | EX. STREET TREE TO REMAIN        |
|        | PROP. FIRE HYDRANT               |
|        | EX. FIRE HYDRANT TO BE REMOVED   |
|        | EX. FIRE HYDRANT TO REMAIN       |
|        | EX. GAS VALVE                    |
|        | EX. SANITARY SEWER MANHOLE       |
|        | EX. TELECOM MANHOLE              |
|        | EX. ELECTRIC MAN HOLE            |
|        | EX. WATER VALVE                  |
|        | EX. STORM DRAIN MANHOLE          |
|        | PROP. HAWK SIGNAL (BY OTHERS)    |
|        | AM LOADING ZONE                  |
|        | PROP. PURPLE LINE                |
|        | EX. TRAFFIC SIGNAL               |

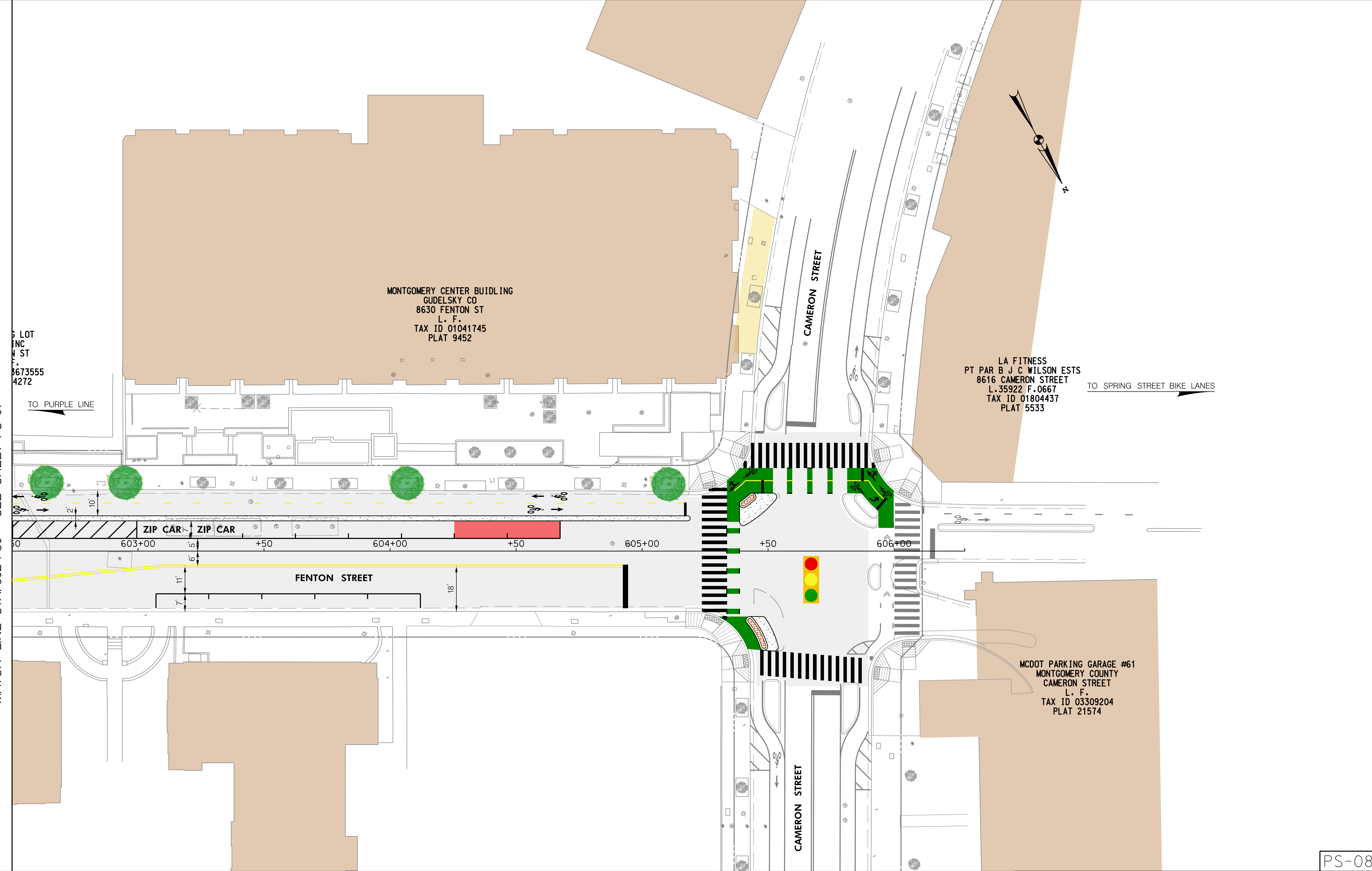
DEPARTMENT OF TRANSPORTATION  
 DIVISION OF TRANSPORTATION ENGINEERING  
 MONTGOMERY COUNTY, MARYLAND

FENTON STREET BIKEWAY STUDY  
 ALTERNATIVE G

Wednesday, November 11, 2020 AT 10:18 AM  
 U:\202601401\24 BPPA - Fenton Street\700 CADD\700 Sheet\pHD-PD468\_FentonStreet.dgn



MATCH LINE STA. 602+50 - SEE SHEET PS-07



| LEGEND                           |                                |
|----------------------------------|--------------------------------|
| PROP. DETECTABLE WARNING SURFACE | BUILDING                       |
| PROP. ASPHALT PAVEMENT           | PROP. GEOMETRY                 |
| PROP. CONCRETE                   | EX. GEOMETRY                   |
| PROP. BRICK PAVERS               | PROP. RIGHT OF WAY LINE        |
| PROP. SWM/BMP                    | EX. RIGHT OF WAY LINE          |
| PROP. CAFE SEATING               | PROP. FENCE                    |
| PROP. BUS STOP                   | EX. FENCE                      |
| CAPITAL BIKE SHARE               | PROP. STREET LIGHT             |
| EX. STREET LIGHT TO BE REMOVED   | EX. STREET TREE TO BE REMOVED  |
| EX. STREET LIGHT TO REMAIN       | EX. STREET TREE TO REMAIN      |
| PROP. UTILITY POLE               | PROP. FIRE HYDRANT             |
| EX. UTILITY POLE TO BE REMOVED   | EX. FIRE HYDRANT TO BE REMOVED |
| EX. UTILITY POLE TO REMIAN       | EX. FIRE HYDRANT TO REMIAN     |
| PROP. STREET TREE                | EX. GAS VALVE                  |
| EX. STREET TREE TO BE REMOVED    | EX. SANITARY SEWER MANHOLE     |
| EX. STREET TREE TO REMAIN        | EX. TELECOM MANHOLE            |
| EX. ELECTRIC MAN HOLE            | EX. WATER VALVE                |
| EX. STORM DRAIN MANHOLE          | EX. STORM DRAIN MANHOLE        |
| PROP. HAWK SIGNAL (BY OTHERS)    | PROP. PURPLE LINE              |
| AM LOADING ZONE                  | EX. TRAFFIC SIGNAL             |

DEPARTMENT OF TRANSPORTATION  
 DIVISION OF TRANSPORTATION ENGINEERING  
 MONTGOMERY COUNTY, MARYLAND

FENTON STREET BIKEWAY STUDY  
 ALTERNATIVE G

PS-08