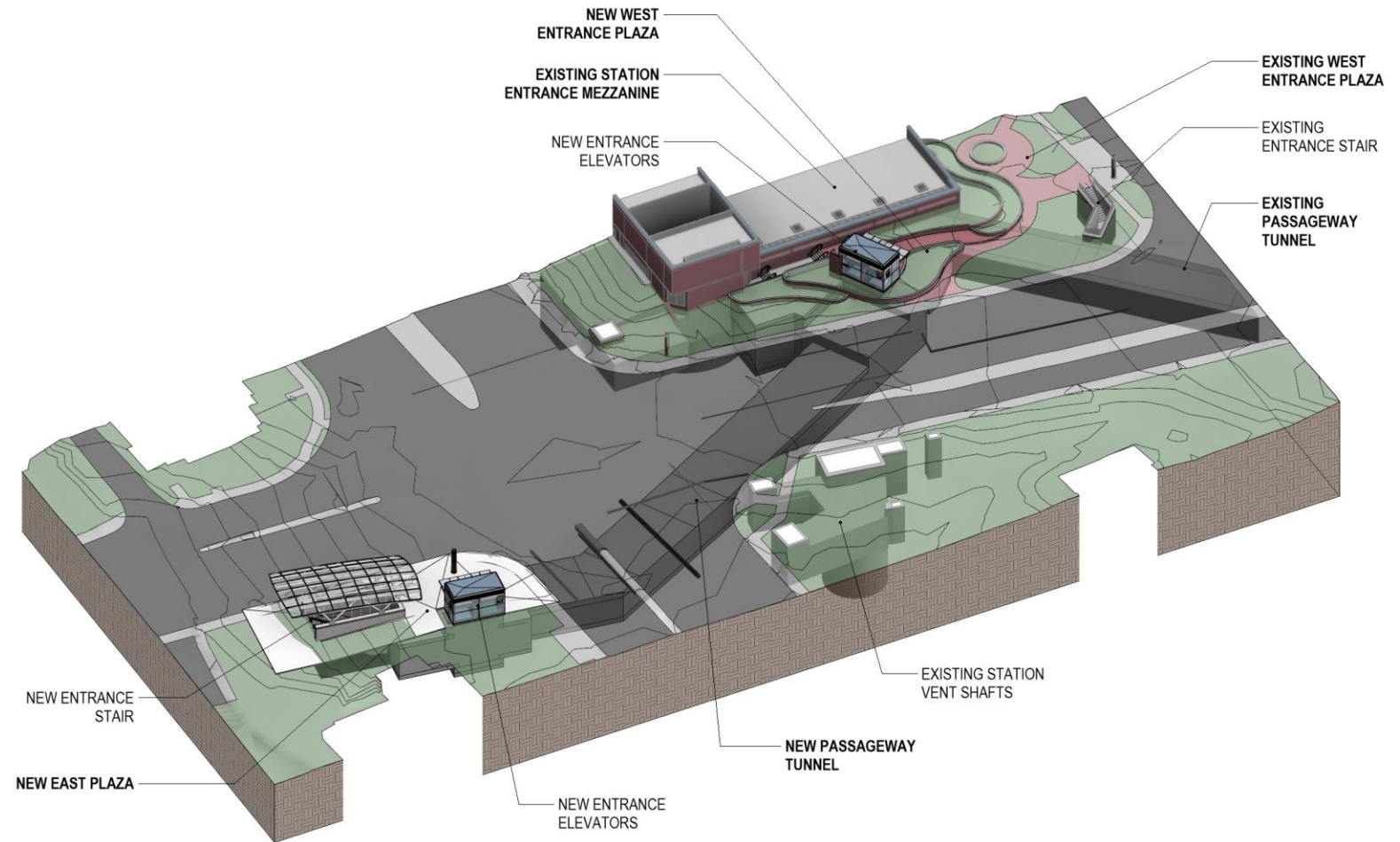


# PUBLIC MEETING

THURSDAY, MAY 16, 2024  
6:30PM – 8:30PM

MONTGOMERY COUNTY OFFICES  
2425 REEDIE DRIVE, WHEATON, MD 20902

## FOREST GLEN PEDESTRIAN PASSAGEWAY



This meeting will be recorded.

# FOREST GLEN PEDESTRIAN PASSAGEWAY

## «« USING ZOOM »»

- Please note **this meeting is being recorded.**
- Everyone is on mute. You cannot unmute yourself. We can unmute you during the Q&A and comment period. If you have a specific question on a slide, please remember the slide number (provided at the bottom of each slide).
- Your video camera is off by default. To reduce the bandwidth of the meeting, we request that you please do not turn your camera on.
- If you have a question during the presentation, send it via **chat**. Select **Lori Main** as the recipient.

# FOREST GLEN PEDESTRIAN PASSAGEWAY

## «« OUTLINE »»

- **Project Team Introduction**
- **Project Purpose**
- **Project Needs**
- **Background Data**
- **Previous Alternatives**
- **Alternatives Recommendation**
- **Renderings of Proposed Entrances and Passageway**
- **Constructability**
- **Project Schedule**
- **Project Cost**
- **Coordination**
- **Contact Info**
- **Q&A**



# FOREST GLEN PEDESTRIAN PASSAGEWAY

## « « PROJECT TEAM INTRODUCTION » »

**Marc Elrich**

*Montgomery County Executive*

**Christopher Conklin, PE Director**  
Department of Transportation

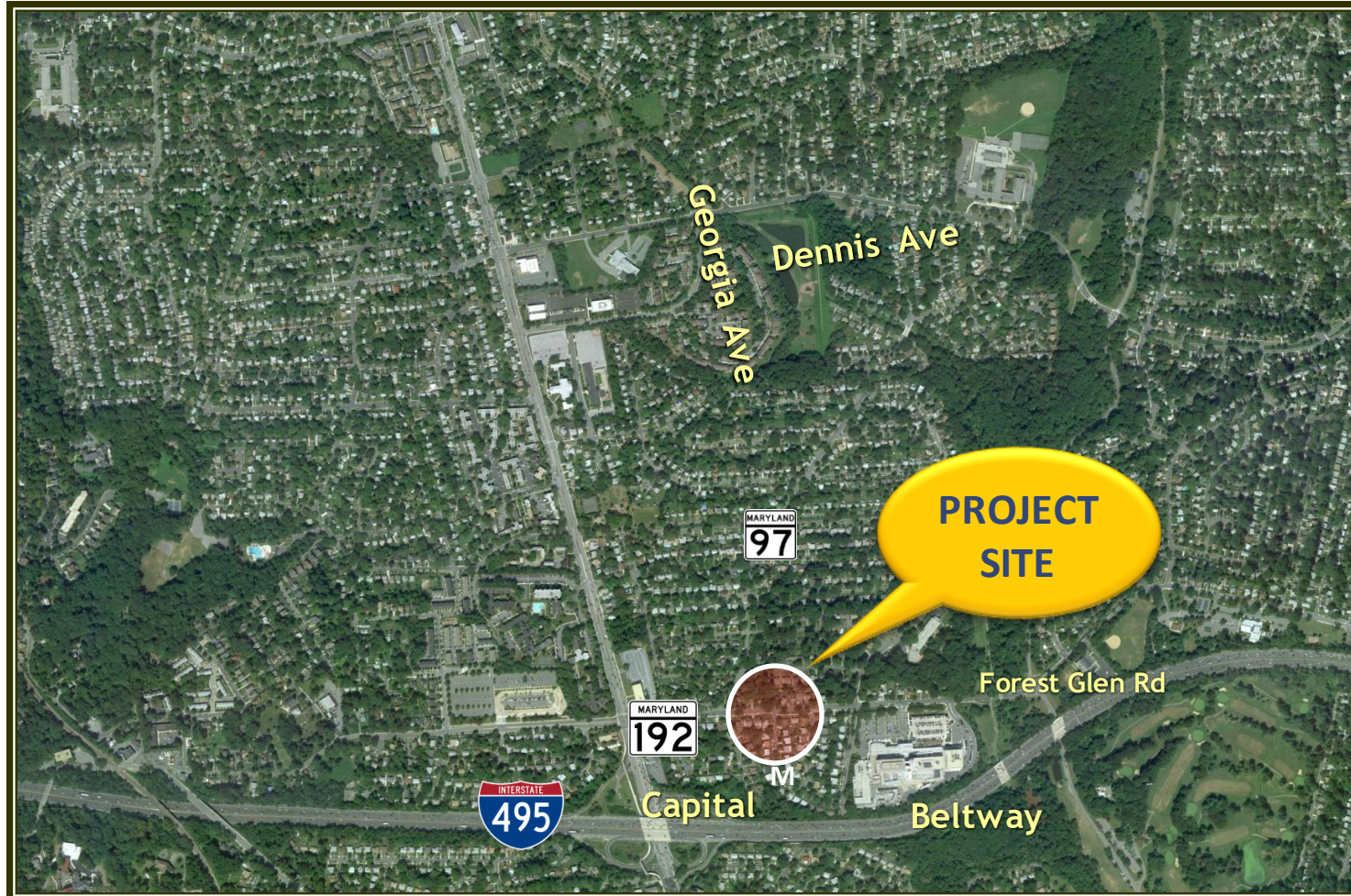
Division of  
Transportation Engineering  
100 Edison Park Drive  
4th Floor  
Gaithersburg, MD 20878  
Phone: 240-777-7223  
Fax: 240-777-7277

**Jose Thommana**  
Acting Division Chief

**Dan Sheridan, P.E.**  
Planning & Design Chief

**Rebecca Park, P.E.**  
Transportation Unit Manager  
Forest Glen Project Manager

**Lori Main**  
Sidewalk Unit Planner  
(Tonight's Meeting Facilitator)



**Rick Adams, P.E.**  
Contract Manager

**Donnie Tusing, P.E.**  
RK&K Project Manager

**Robert Gillespie, P.E.**  
RK&K Civil Task Force and  
Roadway Lead

**KGP Design Studio**  
Architect

**Burns Engineering**  
Mechanical, Plumbing and  
Special Systems

**EPCM, Inc.**  
Electrical

**Koffel Associates**  
Fire Protection

**iDesign Engineering**  
stormwater Management

**AB Consultants**  
Surveys and Utility Investigations

**Mahan Rykiel**  
landscape Architect





# FOREST GLEN PEDESTRIAN PASSAGEWAY

## «« PROJECT PURPOSE »»

- To provide a grade separated pedestrian passageway under Georgia Avenue at Forest Glen Road for improved safety
- To provide direct access to Forest Glen Metro Station and improved ADA accessibility to the Mezzanine of the Metro Station



# FOREST GLEN PEDESTRIAN PASSAGEWAY

## «« PROJECT NEEDS »»

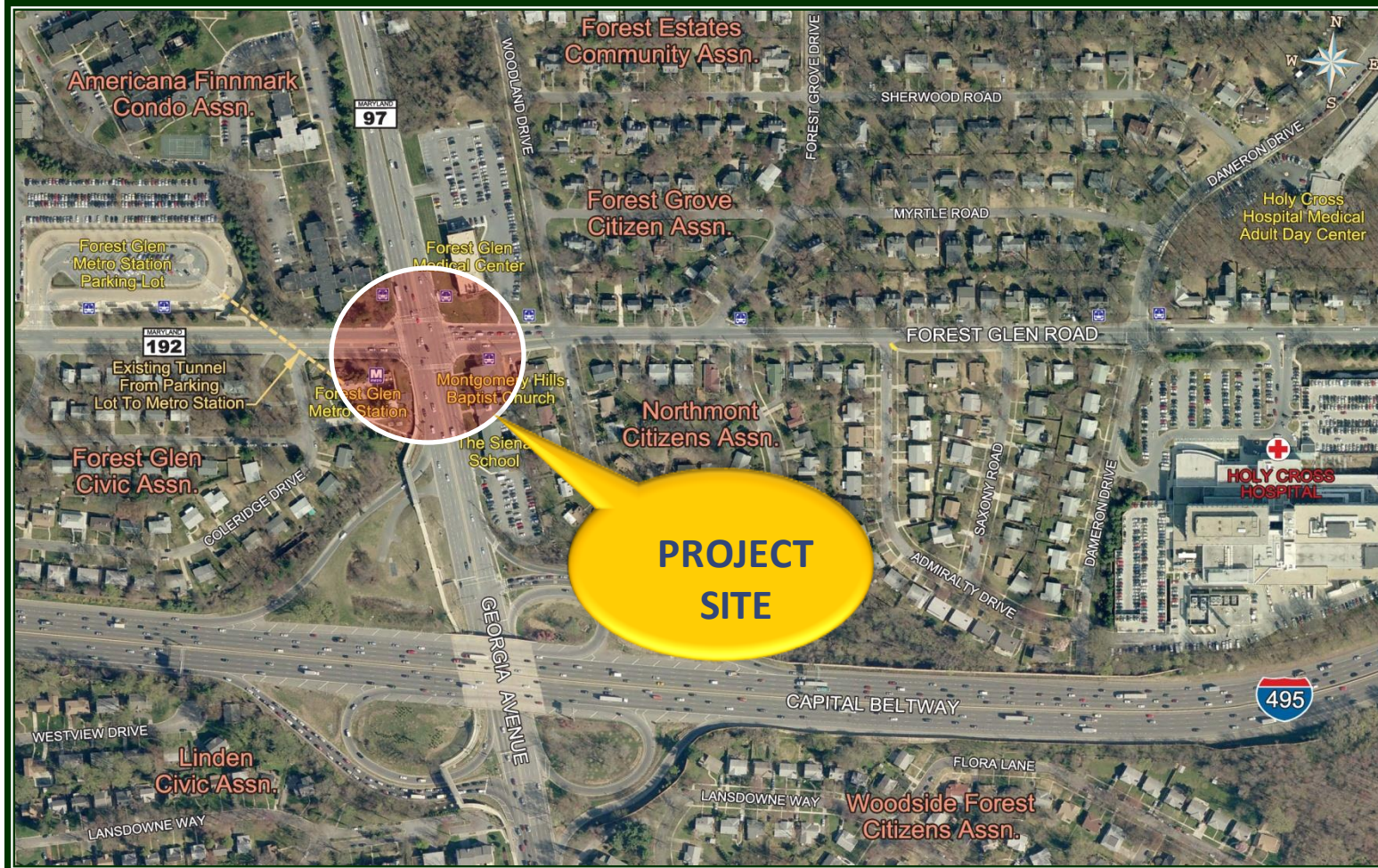
- There is a need for improved pedestrian safety at the intersection and improved access to the Metro Station
  - Highly congested intersection
  - Frequent conflicts between pedestrians and vehicles
  - No existing direct ADA access to the mezzanine of the Metro Station





# FOREST GLEN PEDESTRIAN PASSAGEWAY

## « « BACKGROUND DATA » »

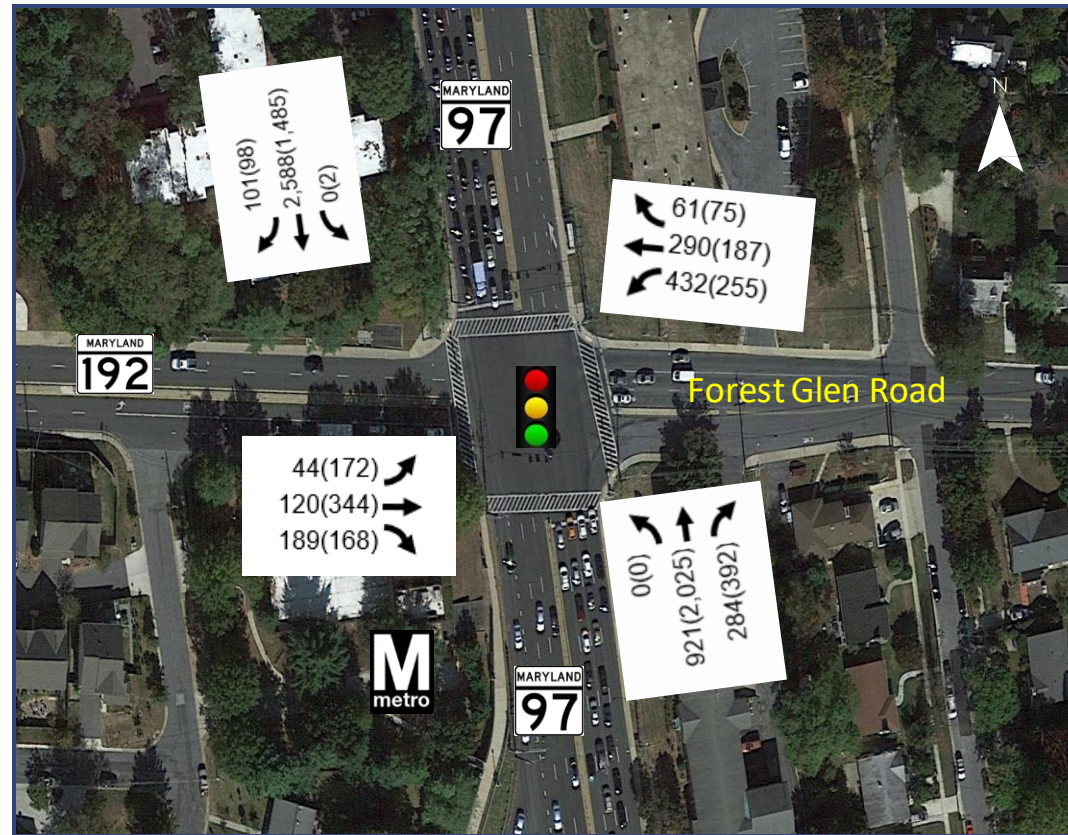




# FOREST GLEN PEDESTRIAN PASSAGEWAY

## « « BACKGROUND DATA – 2023 VEHICULAR TRAFFIC » »

- Highly travelled intersection with approximately 80,000 vehicles/day (peak hour volumes have decreased about 20% from 2012 Feasibility Study)
- Long signal cycle > 150 seconds
- Potential pedestrian delay ≈ 140 seconds
- Long delay likely encourages jaywalking
- LOS F (Oversaturated; vehicles wait through multiple signal cycles)



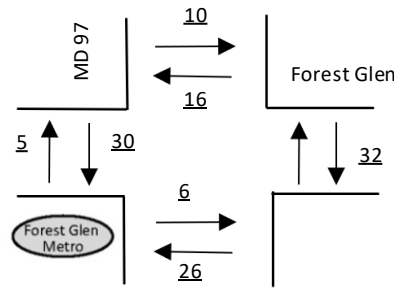


# FOREST GLEN PEDESTRIAN PASSAGEWAY

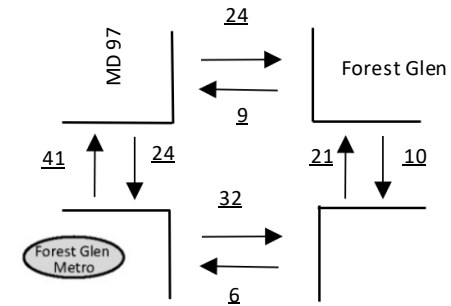
## « « BACKGROUND DATA – PEDESTRIAN MOVEMENTS » »

- Counts performed Tuesday, October 3, 2023
- Significant crossings of all 4 legs of the intersection
- Nearly 500 crossings across Georgia Avenue (decrease of about 35% since 2012 Feasibility Study)

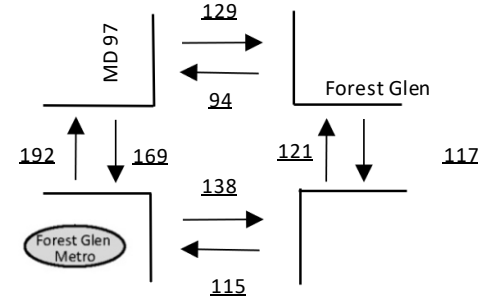
AM Peak Hour (7:30AM – 8:30AM)



PM Peak Hour (5:30PM – 6:30PM)



13-Hour

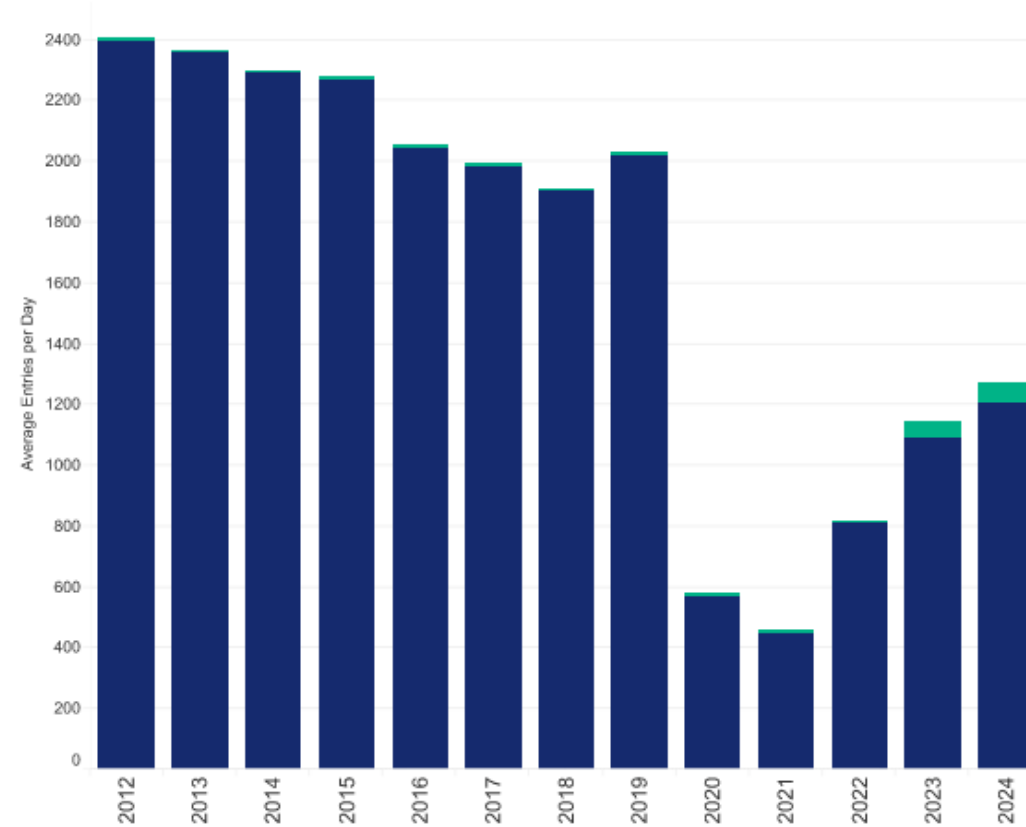


# FOREST GLEN PEDESTRIAN PASSAGEWAY

## « « BACKGROUND DATA – RED LINE RIDERSHIP » »

### Metrorail Ridership

Average Weekday Rail Entries by Year

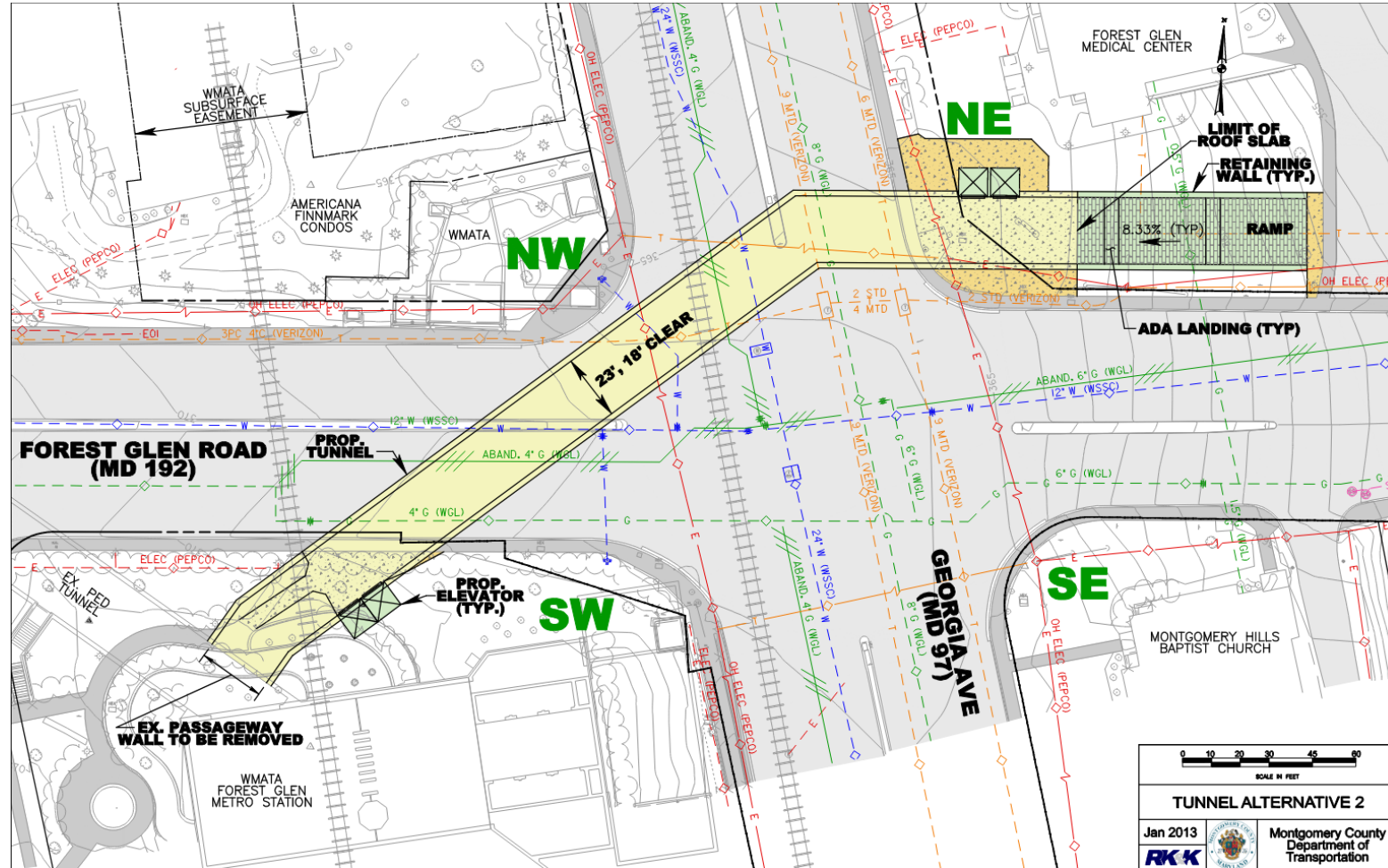






# FOREST GLEN PEDESTRIAN PASSAGEWAY

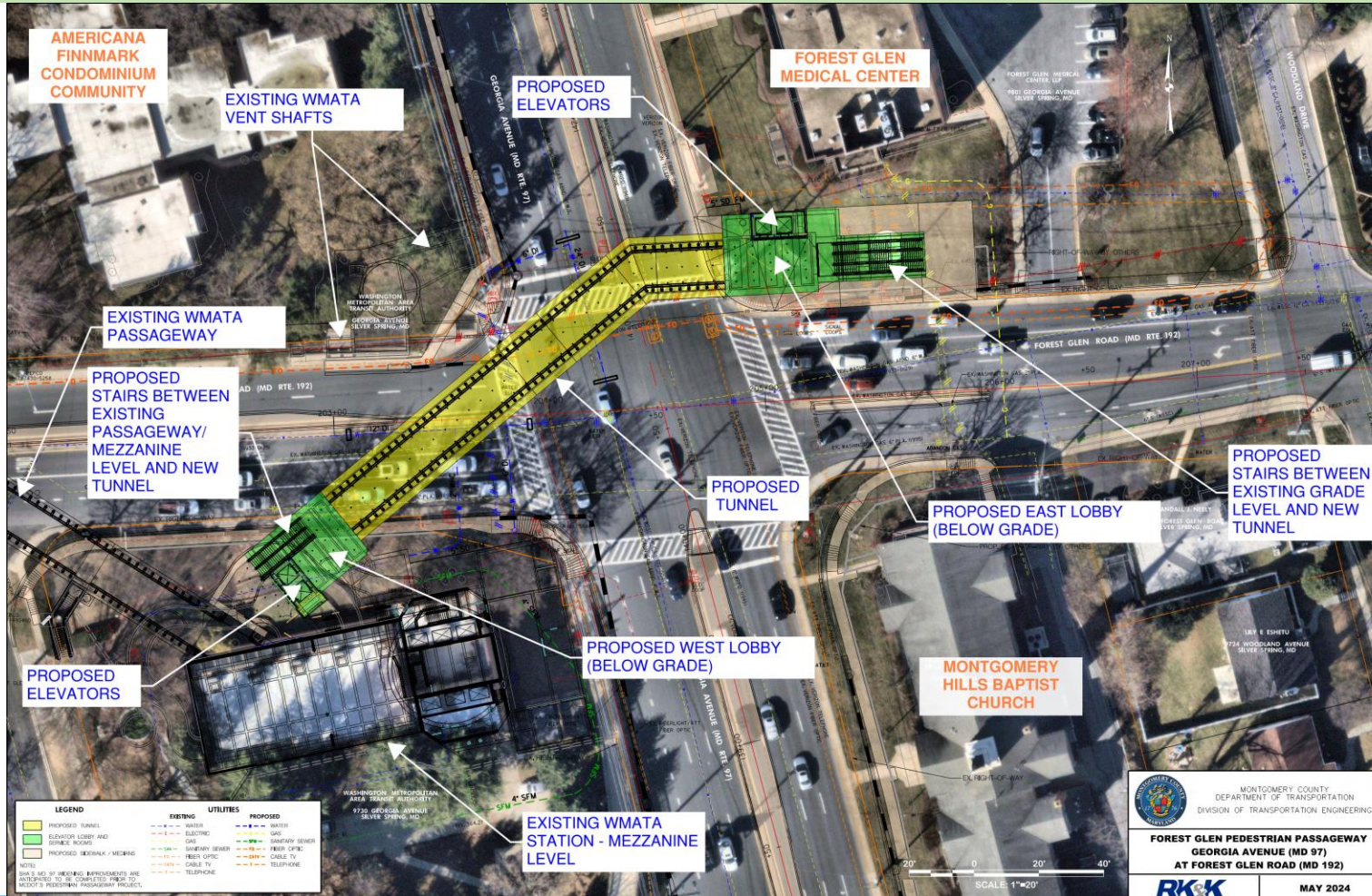
## « « ALTERNATIVES RECOMMENDATION » »





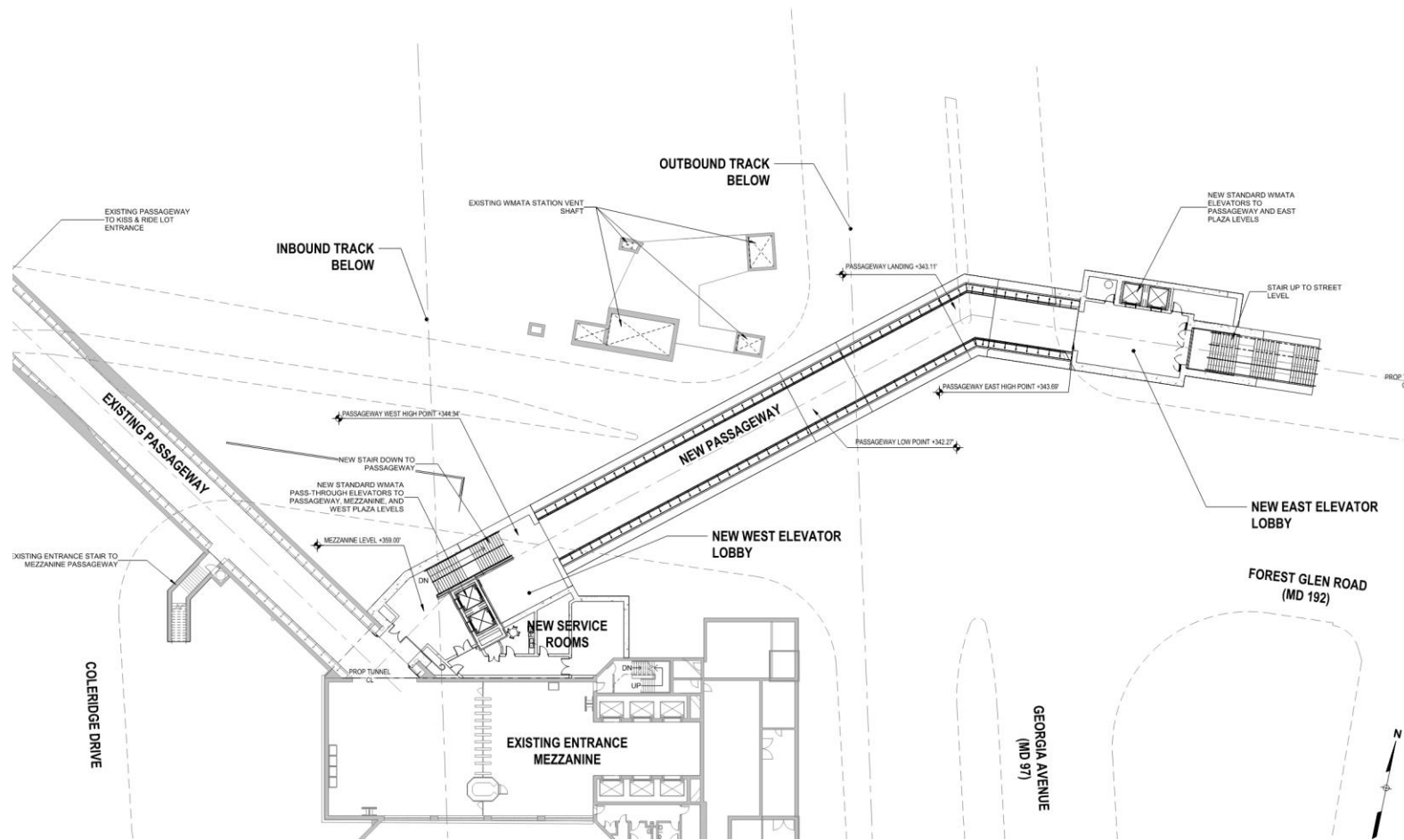
# FOREST GLEN PEDESTRIAN PASSAGEWAY

## «« PROPOSED ENTRANCES AND PASSAGEWAY - REVISED TUNNEL ALIGNMENT »»



# FOREST GLEN PEDESTRIAN PASSAGEWAY

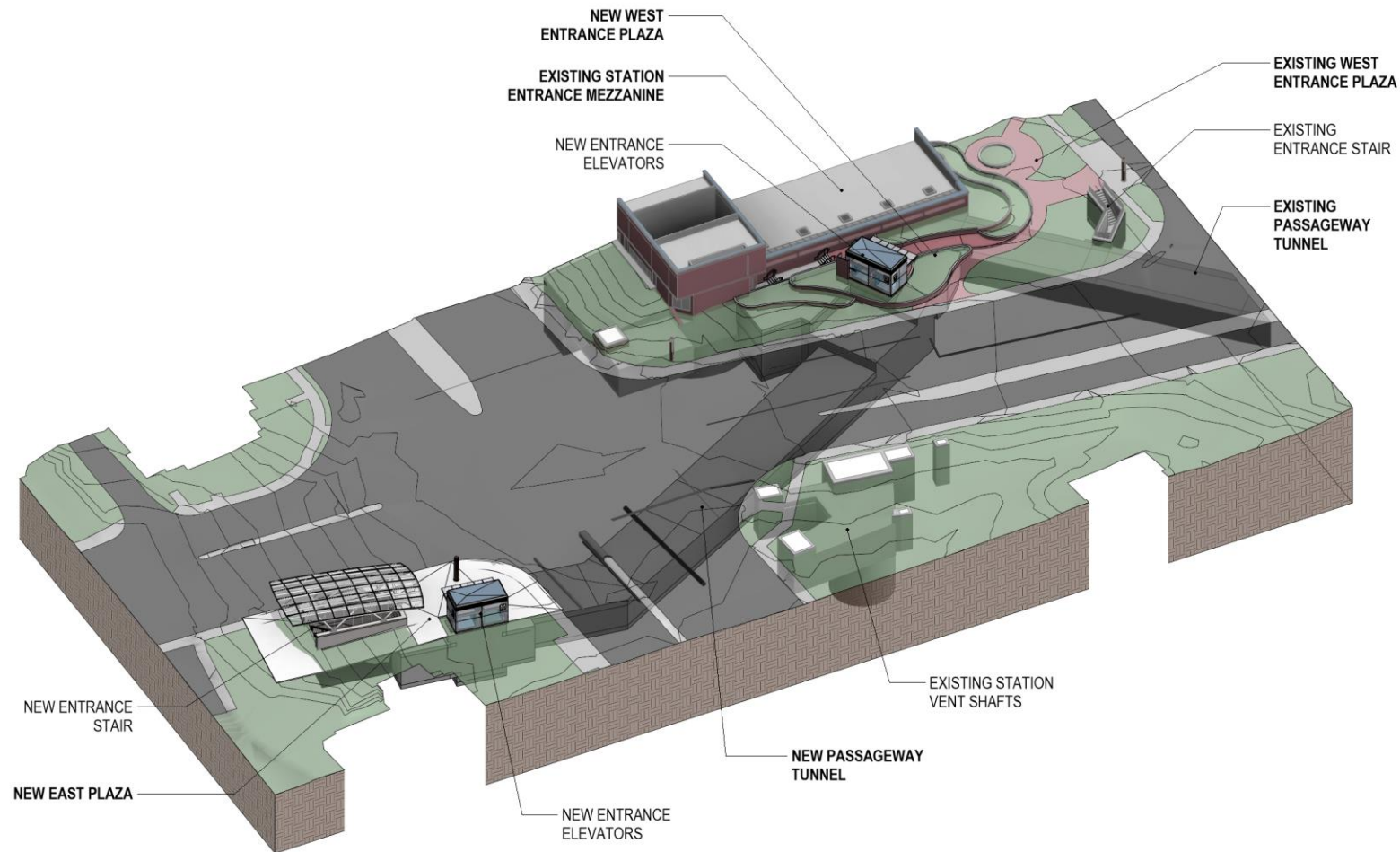
## « « PROPOSED ENTRANCES AND PASSAGEWAY - PREFERRED SPACE PLANNING » »





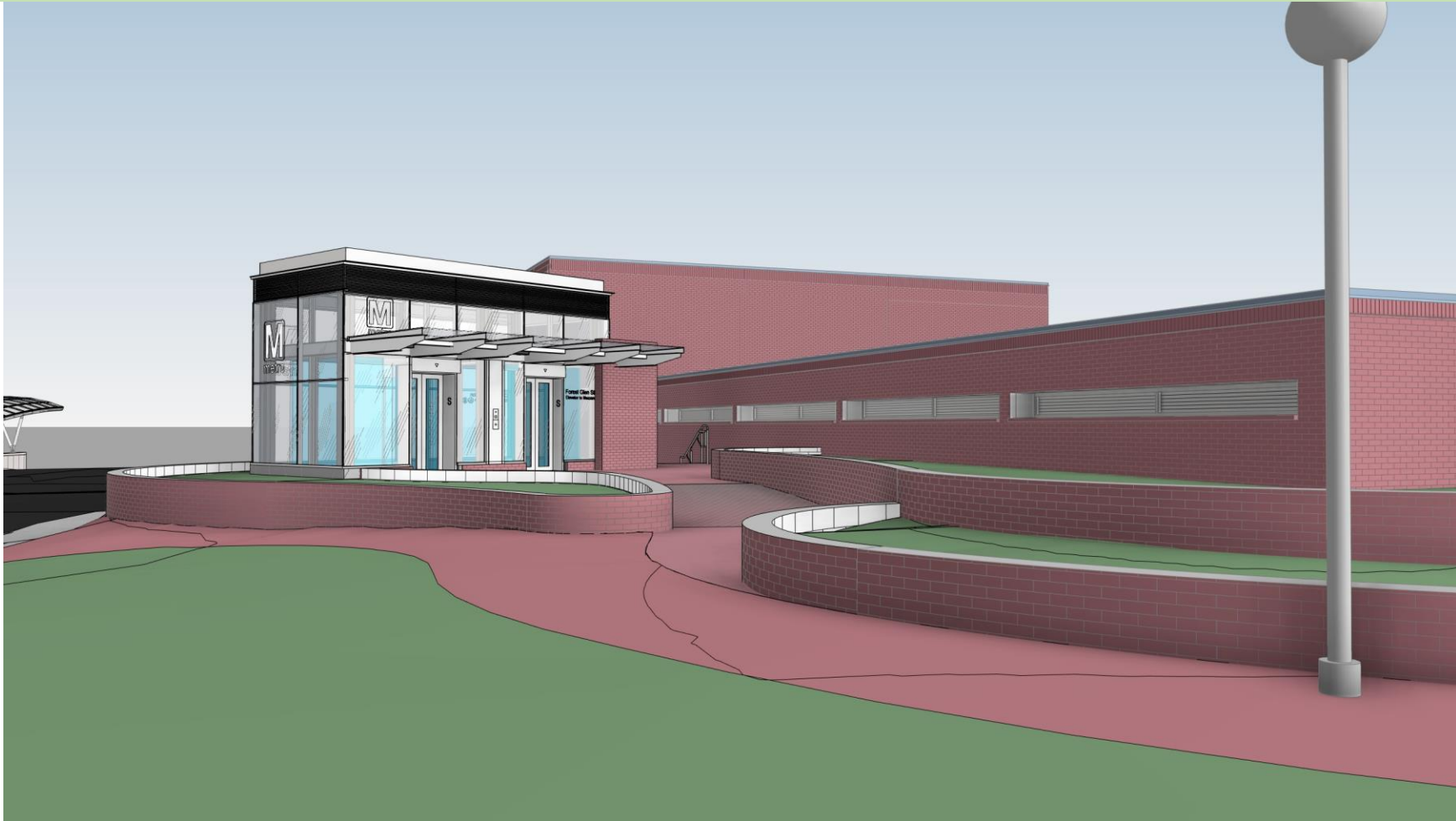
# FOREST GLEN PEDESTRIAN PASSAGEWAY

« « PROPOSED ENTRANCES AND PASSAGEWAY - 3D OVERHEAD VIEW LOOKING SOUTHWEST » »



# FOREST GLEN PEDESTRIAN PASSAGEWAY

«« PROPOSED ENTRANCES AND PASSAGEWAY - WEST PLAZA RENDERING LOOKING EAST »»



# FOREST GLEN PEDESTRIAN PASSAGEWAY

«PROPOSED ENTRANCES AND PASSAGEWAY - WEST PLAZA RENDERING VIEW FROM STREET»»





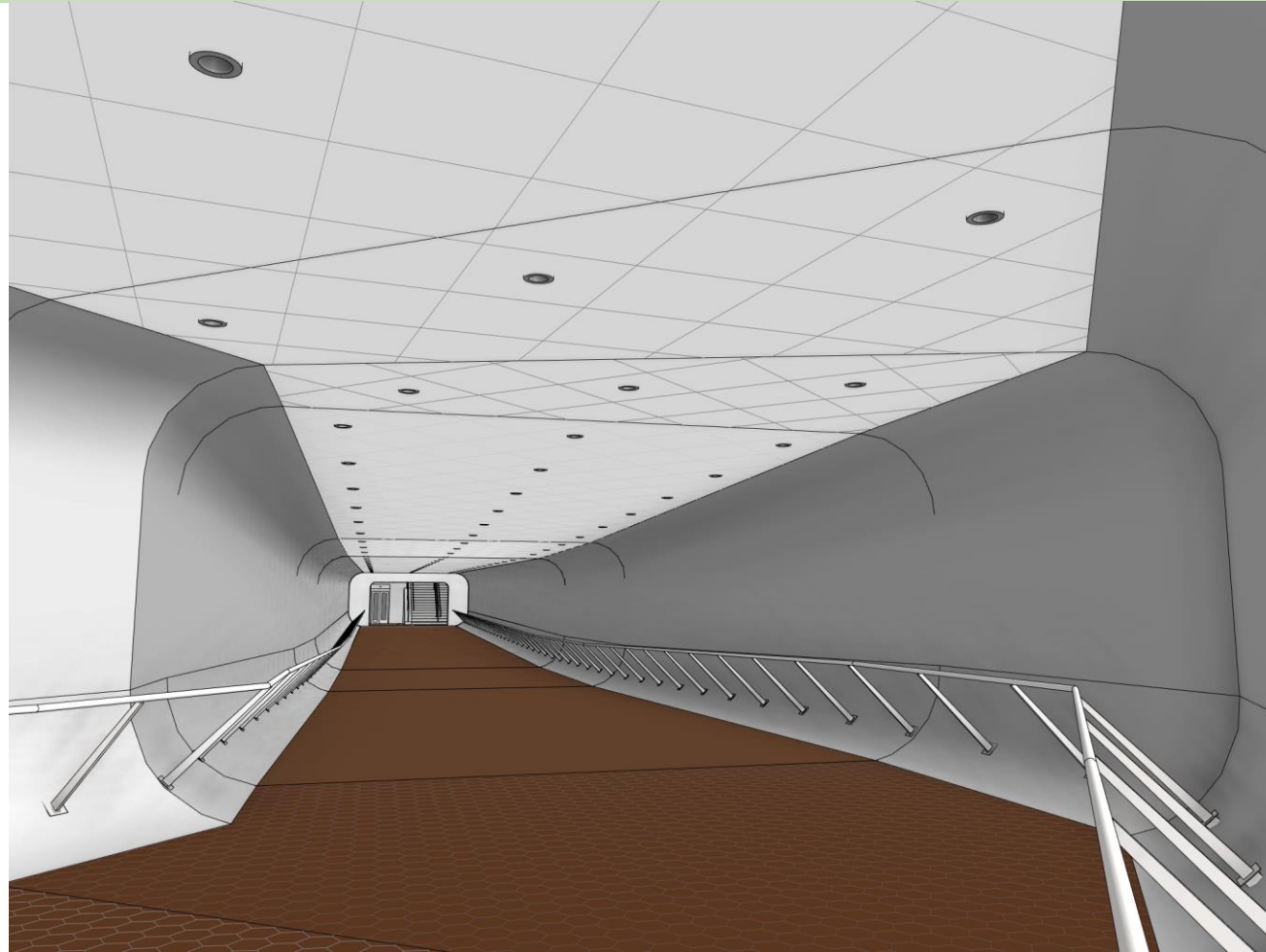
# FOREST GLEN PEDESTRIAN PASSAGEWAY

« « PROPOSED ENTRANCES AND PASSAGEWAY - EAST PLAZA RENDERING VIEW FROM STREET » »



# FOREST GLEN PEDESTRIAN PASSAGEWAY

«« PROPOSED ENTRANCES AND PASSAGEWAY - TYPICAL TUNNEL SECTION RENDERING »»



# FOREST GLEN PEDESTRIAN PASSAGEWAY

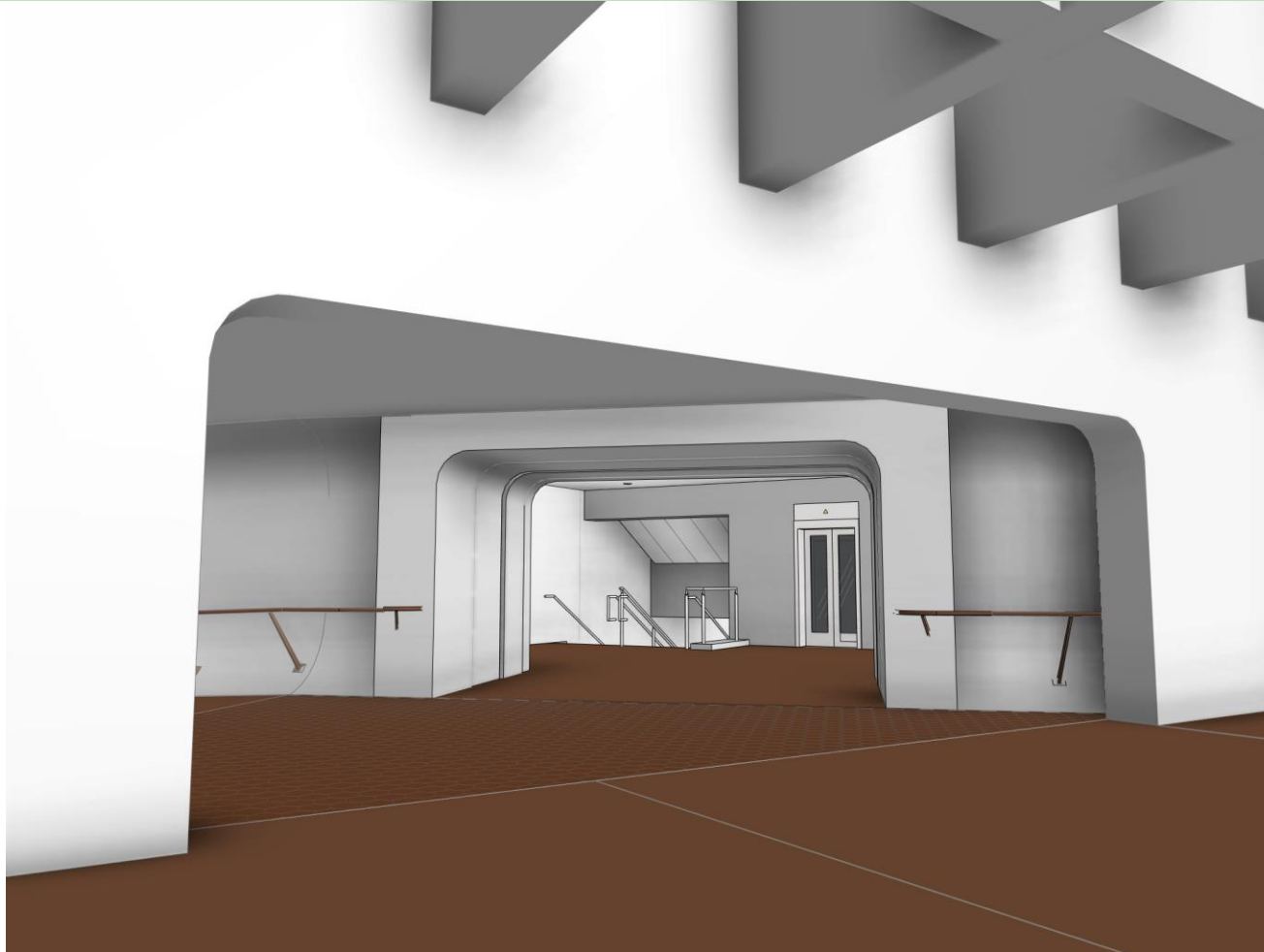
«« PROPOSED ENTRANCES AND PASSAGEWAY - WEST ELEVATOR LOBBY RENDERING  
AT MEZZANINE LEVEL »»





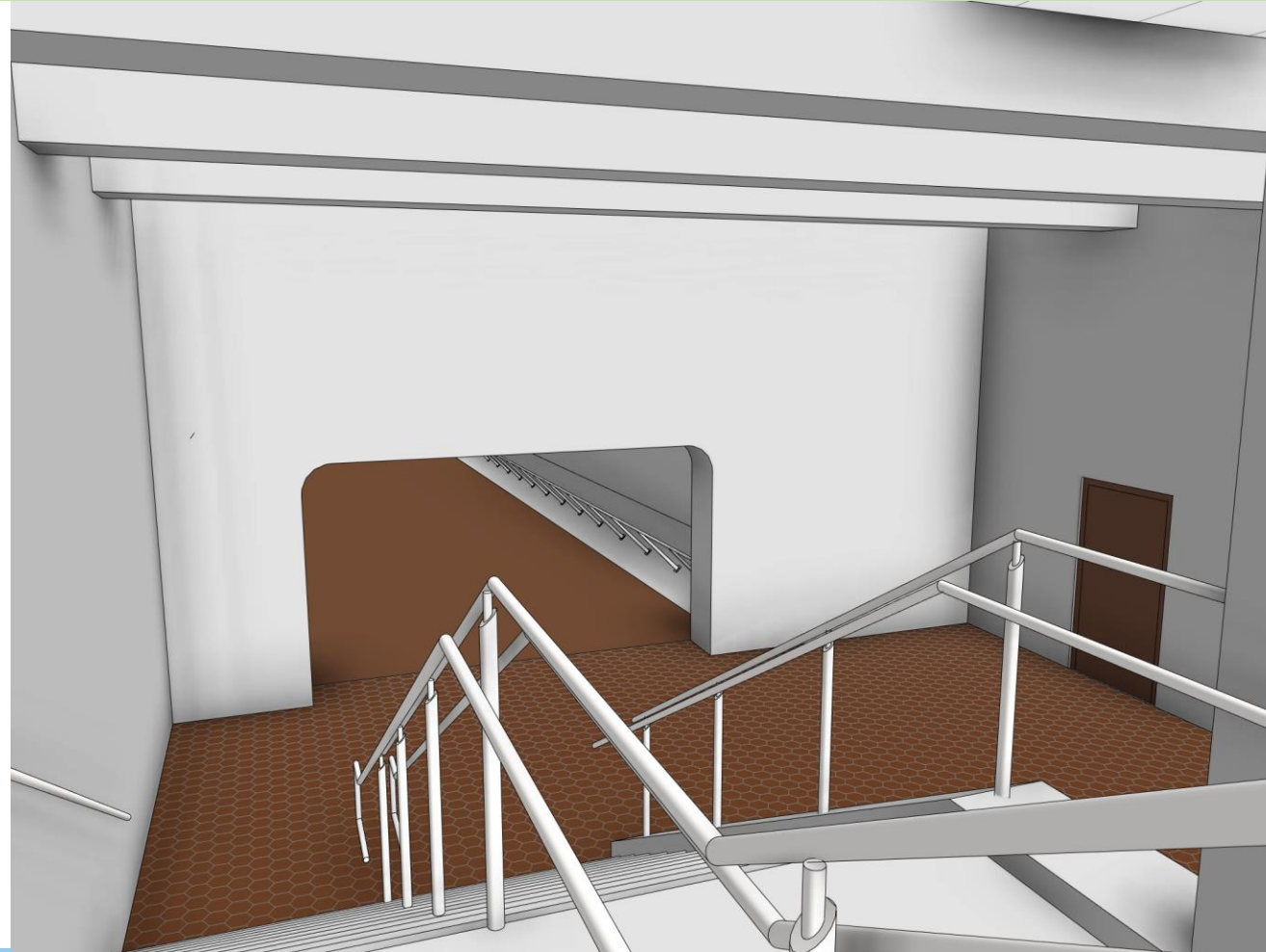
# FOREST GLEN PEDESTRIAN PASSAGEWAY

«« PROPOSED ENTRANCES AND PASSAGEWAY - WEST ELEVATOR LOBBY RENDERING AT MEZZANINE LEVEL »»



# FOREST GLEN PEDESTRIAN PASSAGEWAY

«« PROPOSED ENTRANCES AND PASSAGEWAY - WEST ELEVATOR LOBBY RENDERING FROM MEZZANINE TO PASSAGEWAY LEVEL »»



# FOREST GLEN PEDESTRIAN PASSAGEWAY

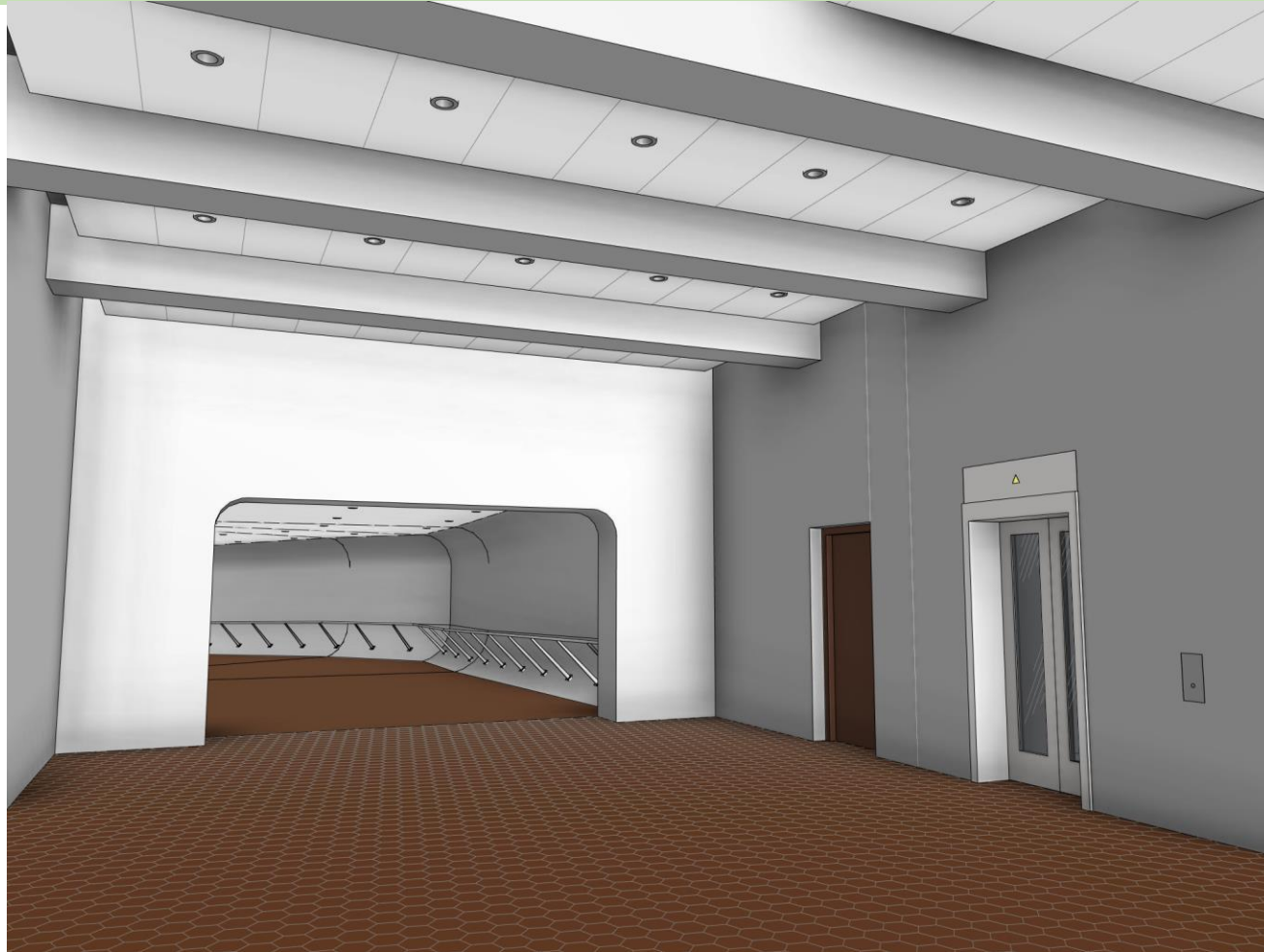
«« PROPOSED ENTRANCES AND PASSAGEWAY - EAST ELEVATOR LOBBY RENDERING LOOKING EAST »»





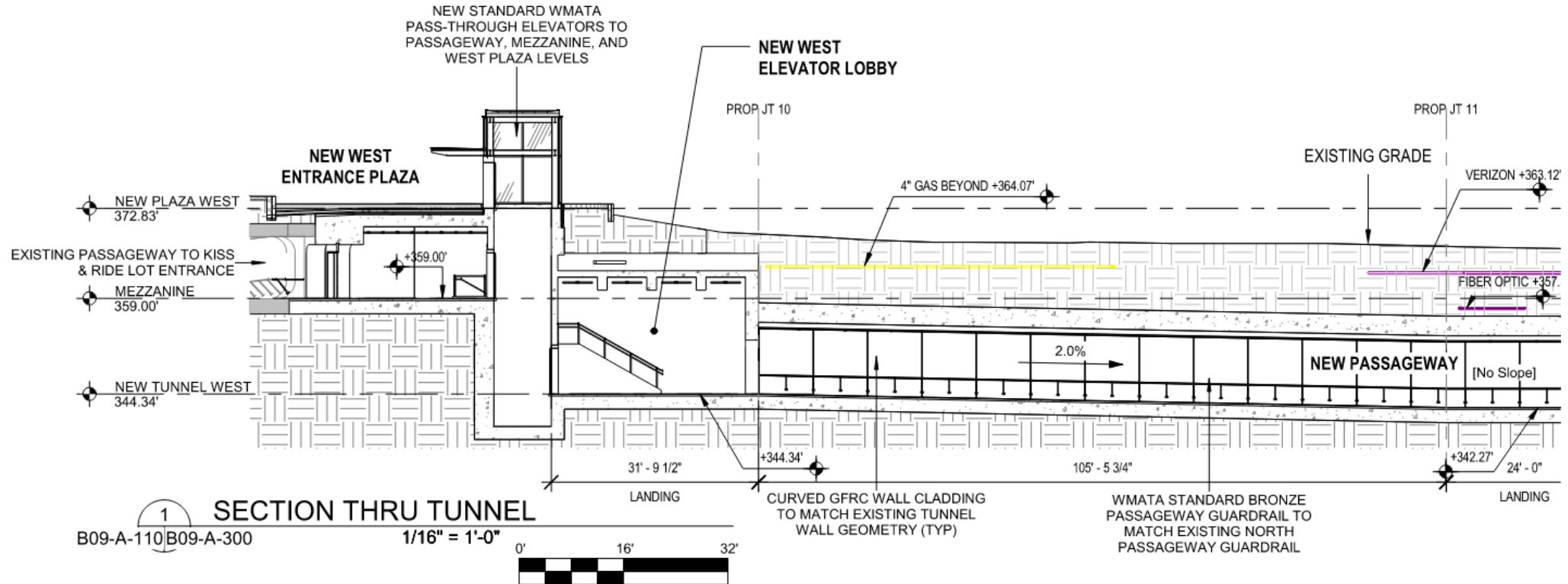
# FOREST GLEN PEDESTRIAN PASSAGEWAY

«« PROPOSED ENTRANCES AND PASSAGEWAY - EAST ELEVATOR LOBBY RENDERING LOOKING WEST »»



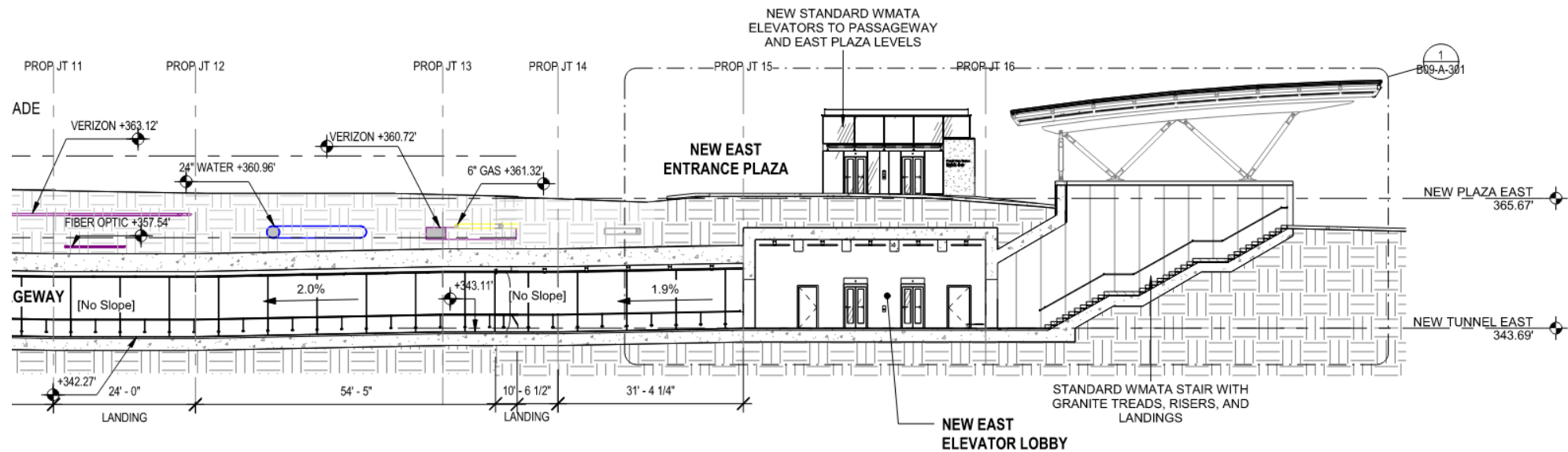
# FOREST GLEN PEDESTRIAN PASSAGEWAY

## «« PROPOSED ENTRANCES AND PASSAGEWAY - TUNNEL PROFILE »»



# FOREST GLEN PEDESTRIAN PASSAGEWAY

## « « PROPOSED ENTRANCES AND PASSAGEWAY - TUNNEL PROFILE » »





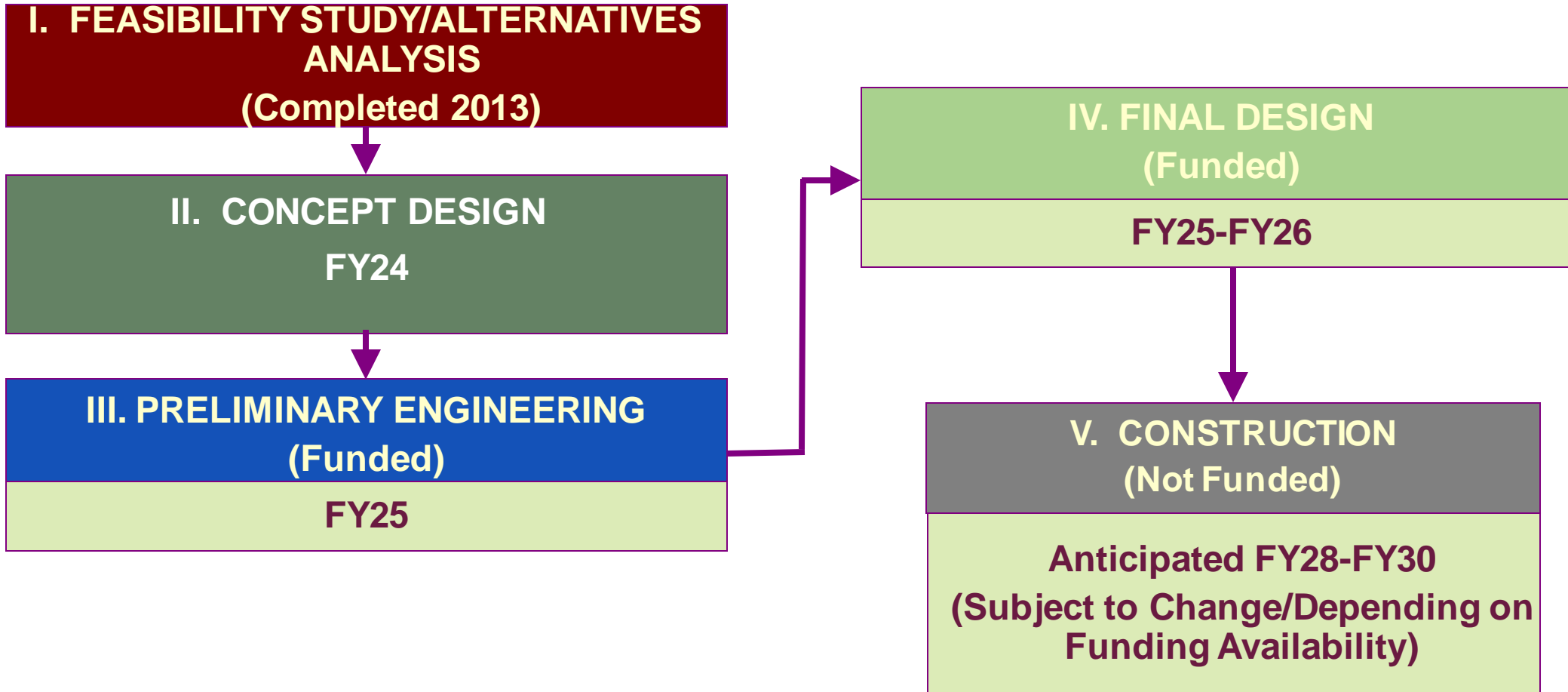
# FOREST GLEN PEDESTRIAN PASSAGEWAY

## «« CONSTRUCTABILITY »»

- **Conventional Cut and Cover Techniques**
  - Night-time lane closures to install piles, beams and temporary decking
  - Overhead utility clearance restrictions
- **Breakthrough Into Existing Passageway**
  - Will need to support existing roof slab
- **Work Adjacent to and Below Existing Station Mezzanine**
  - Underpin existing slab on grade

# FOREST GLEN PEDESTRIAN PASSAGEWAY

## «« PROJECT SCHEDULE »»



# FOREST GLEN PEDESTRIAN PASSAGEWAY

## « « PROJECT COST » »

### EXPENDITURE SCHEDULE (\$000s)

Cost Elements	Total	Thru FY23	Est FY24	Total 6 Years	FY 25	FY 26	FY 27	FY 28	FY 29	FY 30	Beyond 6 Years
Planning, Design and Supervision	7,142	590	956	5,596	171	-	-	1,931	1,750	1,744	-
Land	638	-	-	638	-	-	638	-	-	-	-
Site Improvements and Utilities	3,250	-	-	3,250	-	-	-	1,625	1,625	-	-
Construction	33,438	-	-	33,438	-	-	-	11,146	11,146	11,146	-
<b>TOTAL EXPENDITURES</b>	<b>44,468</b>	<b>590</b>	<b>956</b>	<b>42,922</b>	<b>171</b>	<b>-</b>	<b>638</b>	<b>14,702</b>	<b>14,521</b>	<b>12,890</b>	<b>-</b>

### FUNDING SCHEDULE (\$000s)

Funding Source	Total	Thru FY23	Est FY24	Total 6 Years	FY 25	FY 26	FY 27	FY 28	FY 29	FY 30	Beyond 6 Years
G.O. Bonds	44,468	590	956	42,922	171	-	638	14,702	14,521	12,890	-
<b>TOTAL FUNDING SOURCES</b>	<b>44,468</b>	<b>590</b>	<b>956</b>	<b>42,922</b>	<b>171</b>	<b>-</b>	<b>638</b>	<b>14,702</b>	<b>14,521</b>	<b>12,890</b>	<b>-</b>





# FOREST GLEN PEDESTRIAN PASSAGEWAY

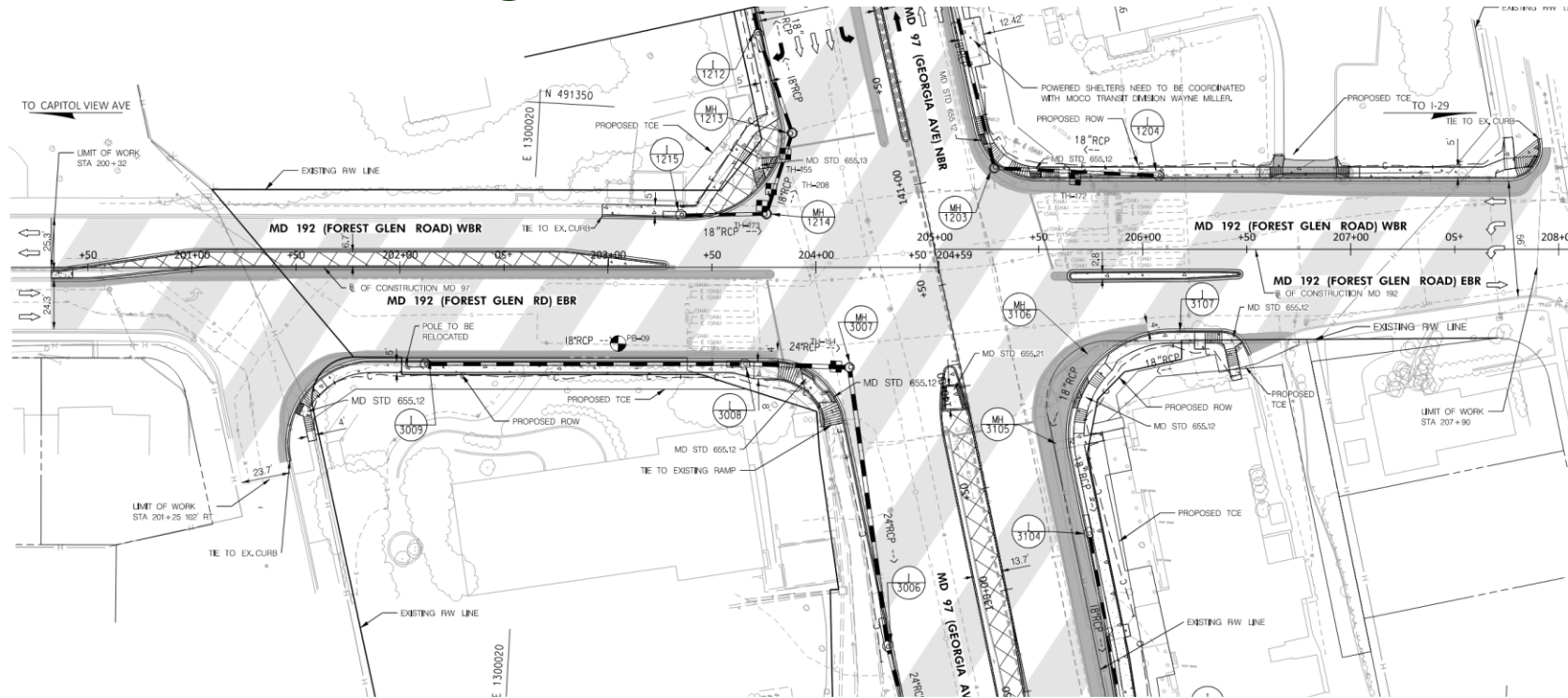
## «« COORDINATION »»

- **WMATA**
  - **WMATA Standards and Details**
- **Utility Owners**
  - **Advanced Utility Relocations**
- **JLB Partners**
  - **Redevelopment of Forest Glen Medical Center (no longer planned)**

# FOREST GLEN PEDESTRIAN PASSAGEWAY

## «« COORDINATION (CONT'D) »»

- MDOT State Highway Administration
- MD 97 Widening



# FOREST GLEN PEDESTRIAN PASSAGEWAY

## «« CONTACT »»



Rebecca Park, PE – Project Manager



240-777-7263



Rebecca.Park@montgomerycountymd.gov



<https://www.montgomerycountymd.gov/dot-dte/projects/ForestGlenPassageway/index.html>





# FOREST GLEN PEDESTRIAN PASSAGEWAY



Questions or Comments?

