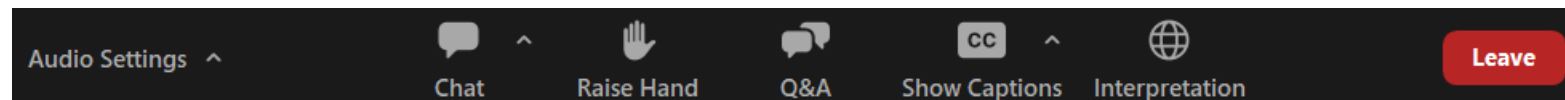


# Welcome!

- As we get started...
- All attendees are on mute.
- Find the Question & Answer (Q&A) feature! That's the way to ask questions and post comments.
- If you are dialing in by phone you can participate during the Question-and-Answer sessions by pressing \*9 to raise your hand. When called on, press \*6 to unmute.



# Public Information Meeting Agenda



- Introductions
- Background and Purpose
- Service Plan and Improvements
- Project Benefits
- Timeline and Next Steps
- Questions & Answers



# ***PUBLIC INFORMATION MEETING***

## Great Seneca Ride On extRa Service

March 15, 2023

**MC****DOT** RideOn extRa



A man and a woman are shown from the waist up, smiling and looking at each other. The woman is holding two large white shopping bags, and the man is holding a coffee cup. They are standing in front of a store with large windows. The entire image is overlaid with a semi-transparent blue filter.

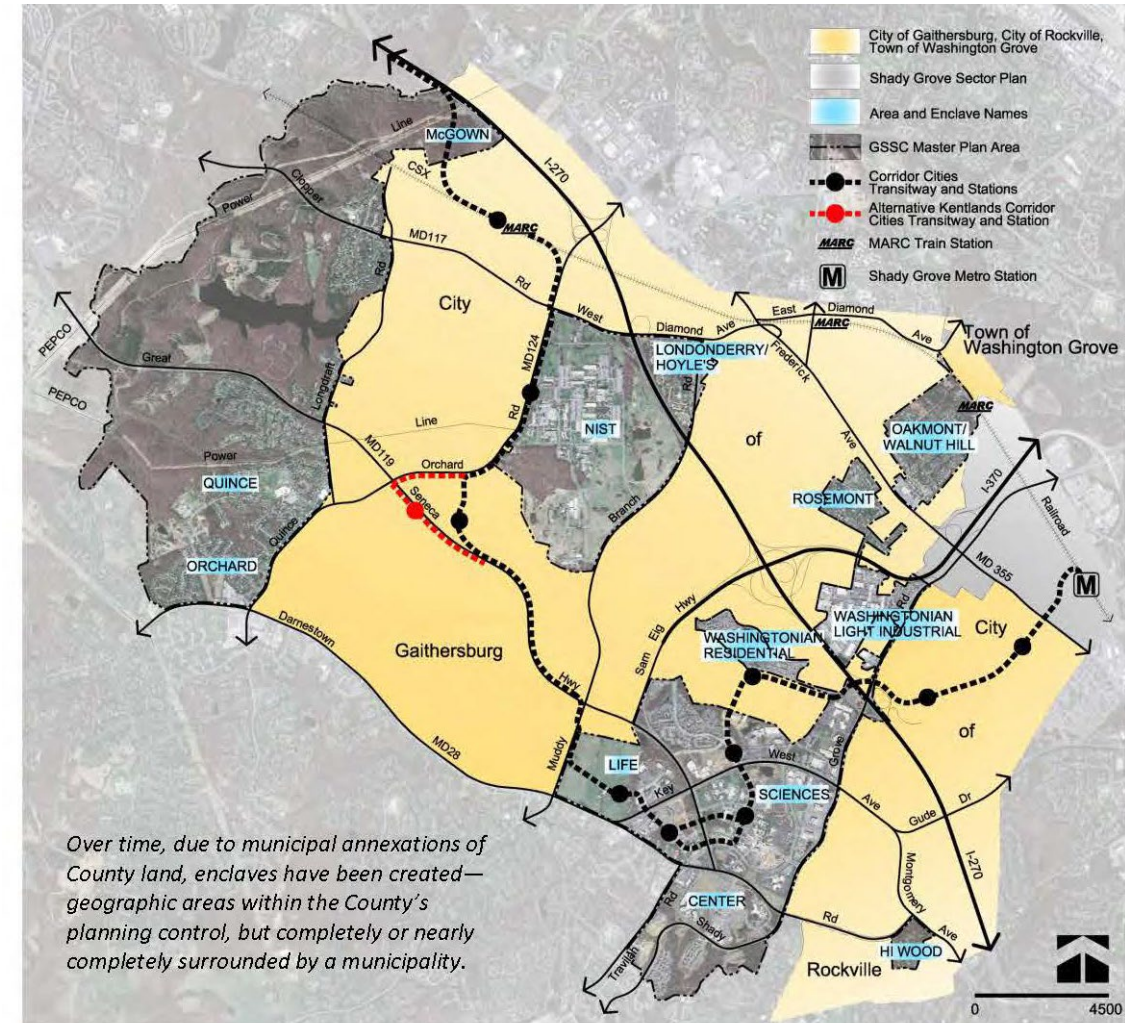
# ***PROJECT BACKGROUND AND PURPOSE***



# Great Seneca Science Corridor (GSSC) Master Plan



- Established Life Sciences Center (LSC)
- Premier location for advanced technology companies
- Corridor Cities Transitway (CCT) Bus Rapid Transit planned to support LSC



# Planning Context



The 2021 GSSC Minor Master Plan Amendment notes that the CCT lacks funding, large projects remain unbuilt, and a mixed-use vision is unrealized

The Great Seneca Science Corridor Master Plan requires transportation mode shift away from automobiles before new development will be approved



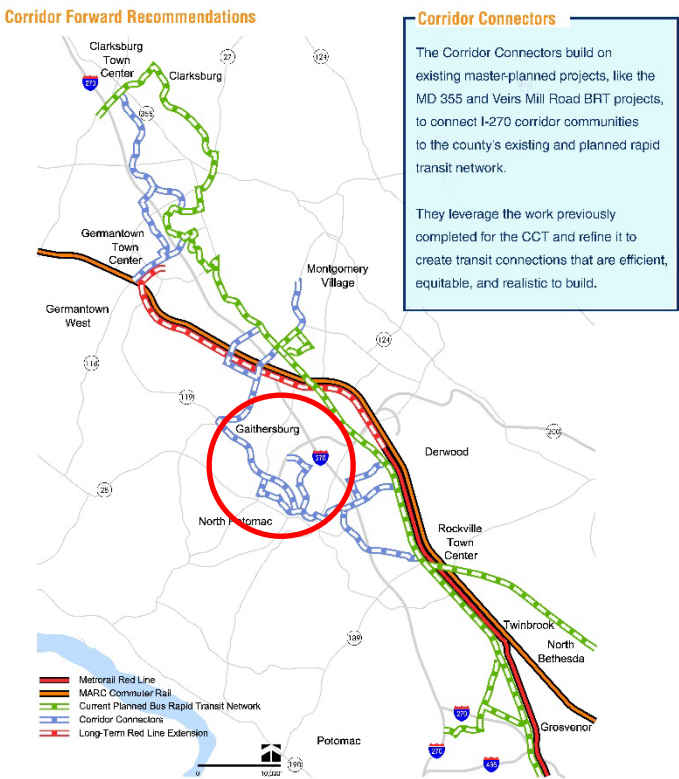
# Corridor Forward Plan



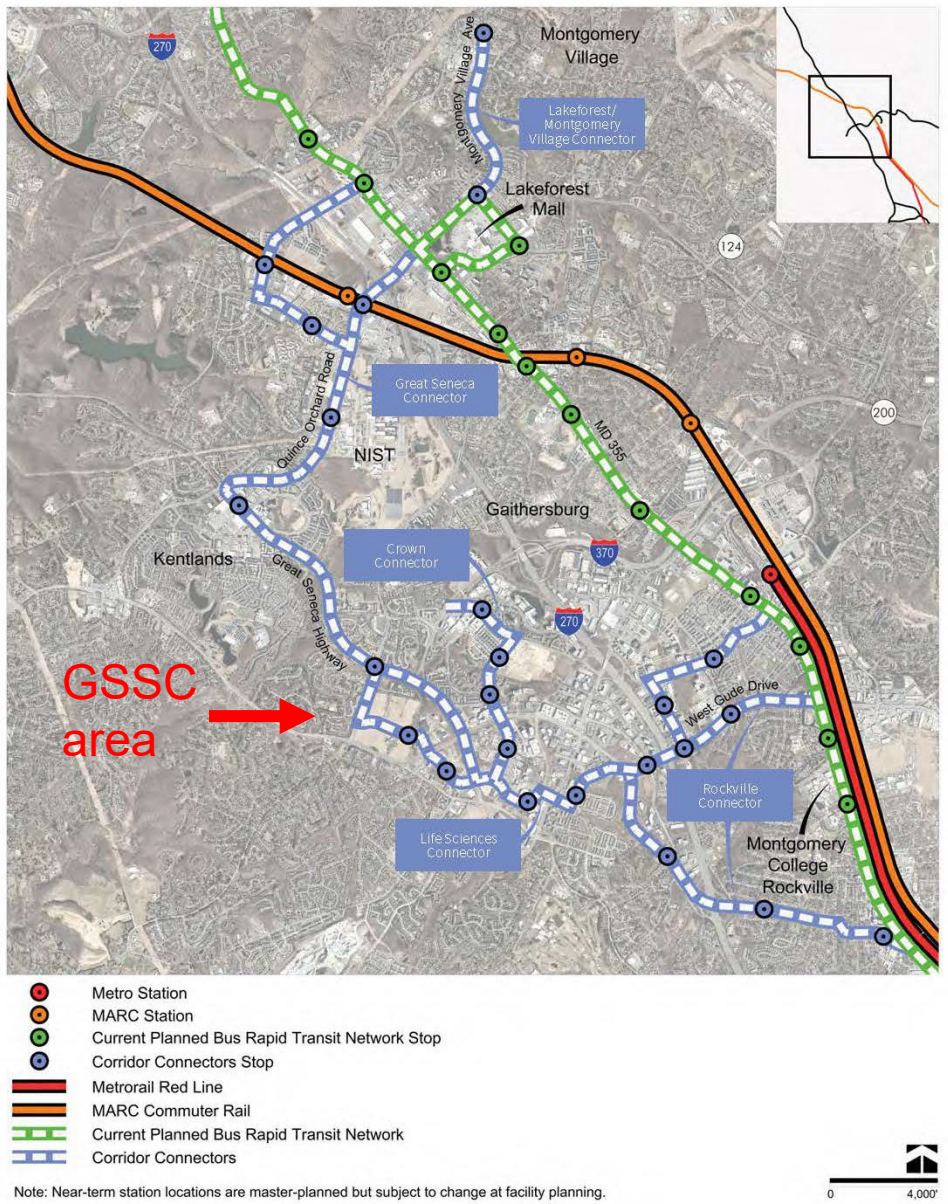
**CORRIDOR FORWARD**  
The I-270 Transit Plan

Approved & Adopted  
SPRING 2022

Montgomery Planning

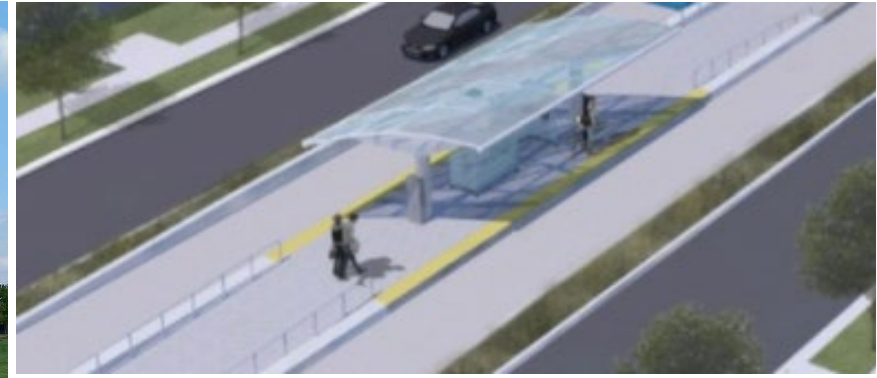


Defines dedicated bus network, with major BRT corridors and Corridor Connectors in GSSC area





# Great Seneca Transit Vision



The Great Seneca Science Corridor Master Plan defines a compelling, transit-oriented vision for a vibrant life sciences hub and surrounding neighborhoods

Corridor Forward Plan re-envisioned the Corridor Cities Transitway as a network of dedicated bus lanes (Corridor Connectors) and supports Great Seneca Ride On extRa as a short-term improvement



# Supporting the Great Seneca Science Corridor Vision

## ***Unleashing Economic Growth***

Great Seneca Science Corridor is a key piece of the County's biotech, life sciences economy

## ***Essential Workers and Essential Work***

Health care, vaccine research, and education are all happening here

## ***Neighborhood Connectivity***

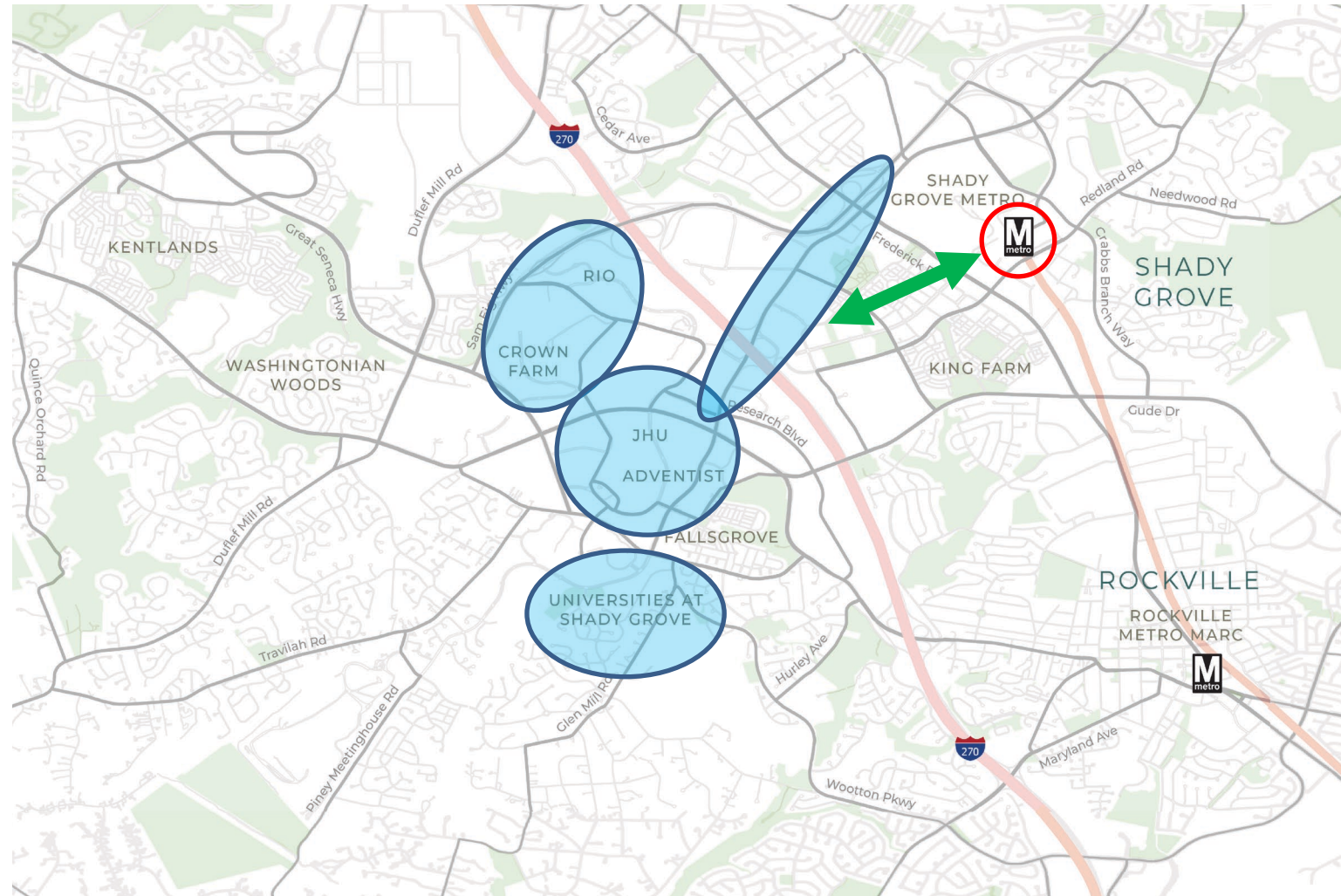
Need for direct bus transit for residents and workers to get to their destination



# Connecting Transit and Activity Centers

Connect WMATA Metrorail Red Line Shady Grove Metro Station to activity/development centers:

- RIO Center
- Crown Farm
- JHU
- Adventist Shady Grove Medical Center
- Universities at Shady Grove
- Traville Village
- Shady Grove Road corridor





# Ride On extRa Background

Montgomery County branded bus service with fewer stops and increased transit improvements for more efficient and reliable travel



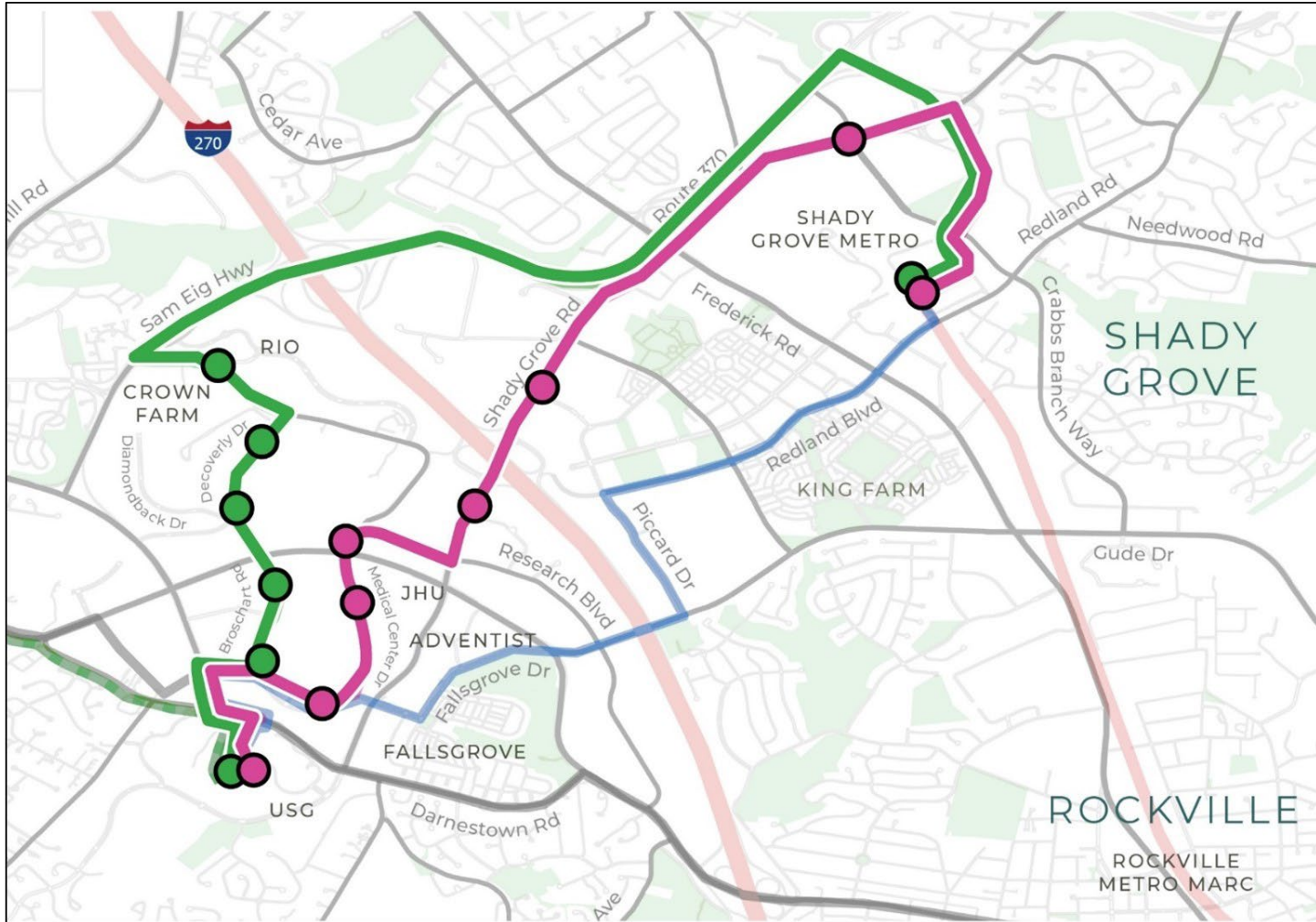
- Existing route 101 service on MD 355
- Stops spaced every 1/4-1/2 mile
- Branded shelters
- Real-time display screens
- Free Wi-Fi access and phone charging
- Extra padding on seats

# ***SERVICE PLAN AND IMPROVEMENTS***





# Great Seneca Ride On extRa Phase 1 Routes



Phase 1 will include the Pink and Lime routes

## Pink Route

Links the busy Shady Grove corridor with Life Sciences Center via Medical Center Drive

## Lime Route

Uses I-370 to provide an express route to RIO, Crown Farm, and heart of the Life Science Center



# Ride On ext*Ra* Transit Center Connections



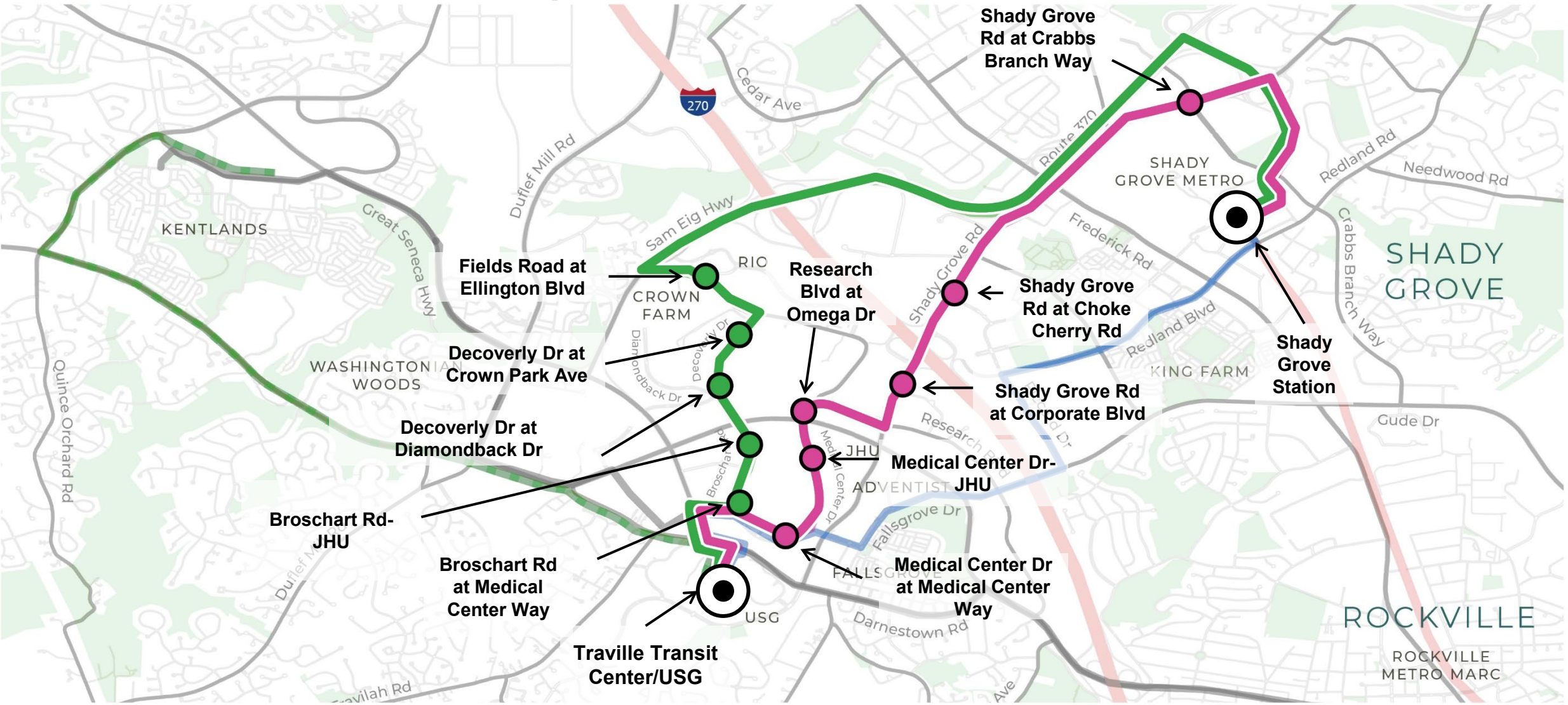
Frequent connections to WMATA Metrorail and bus transfers



Access to USG, Traville Village Center, and Ride On transfers



# Ride On extRa Stop Locations



# Service Frequencies

During this time...

Buses run every...

Time Period	Pink Route	Lime Route
Weekday Peak	10 minutes	15 minutes
Weekday Off-peak	15 minutes	15 minutes
Weekends	30 minutes	30 minutes

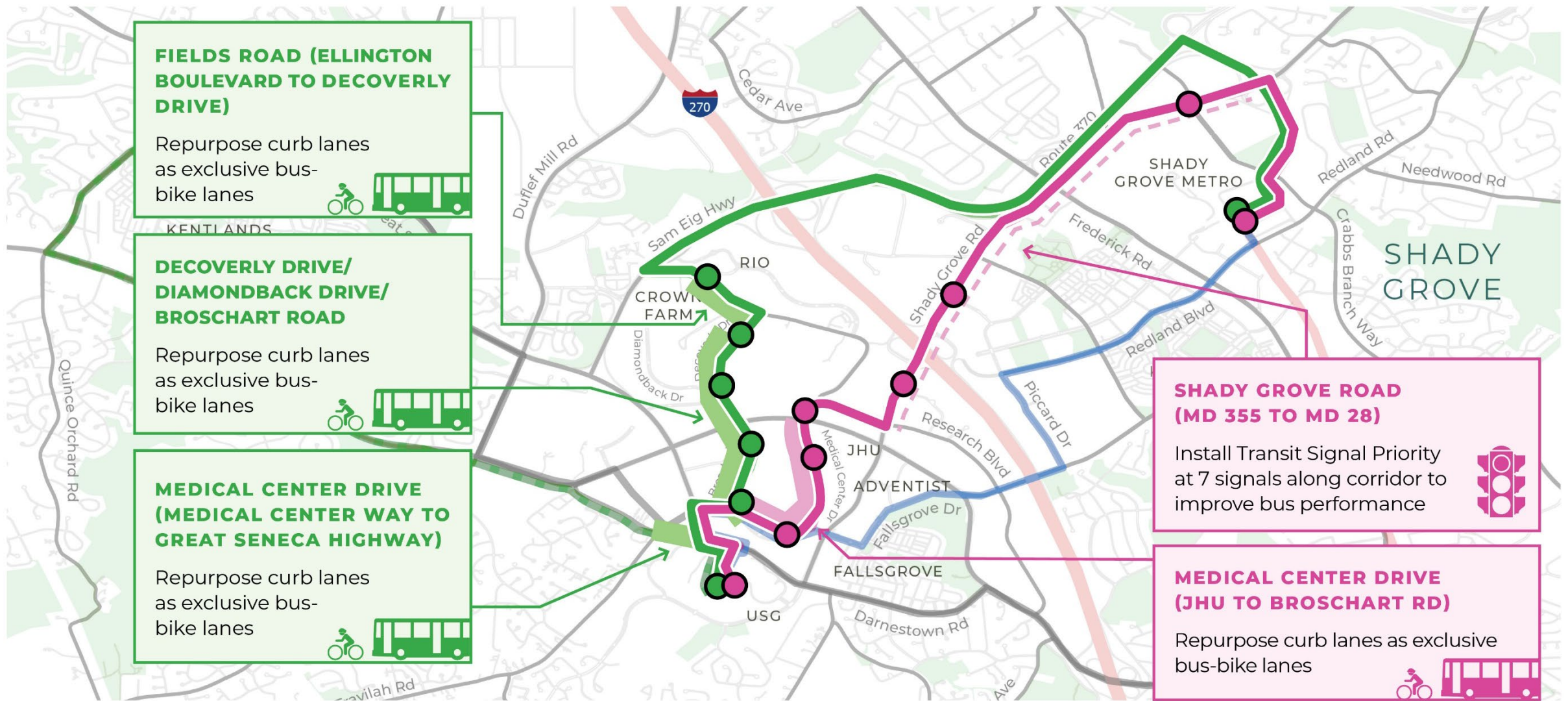


# Shelter Design

- Branded for Ride On extRa
- Shade roof with built-in lighting
- Real-time information display case
- Bench and trash can
- Co-located with branded standalone marker/pylon



# Transit Operations Improvements

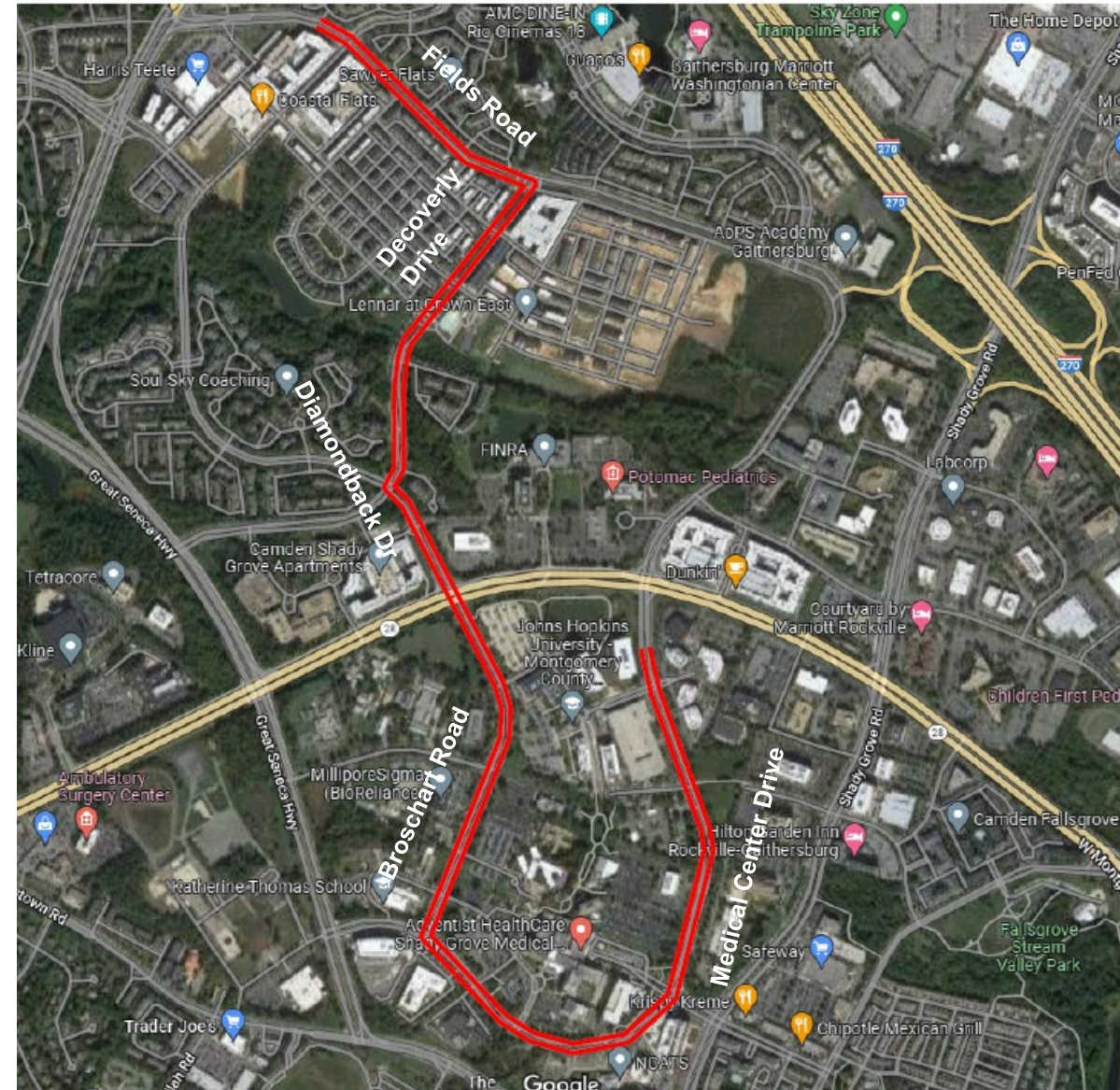




# Dedicated Bus Lanes

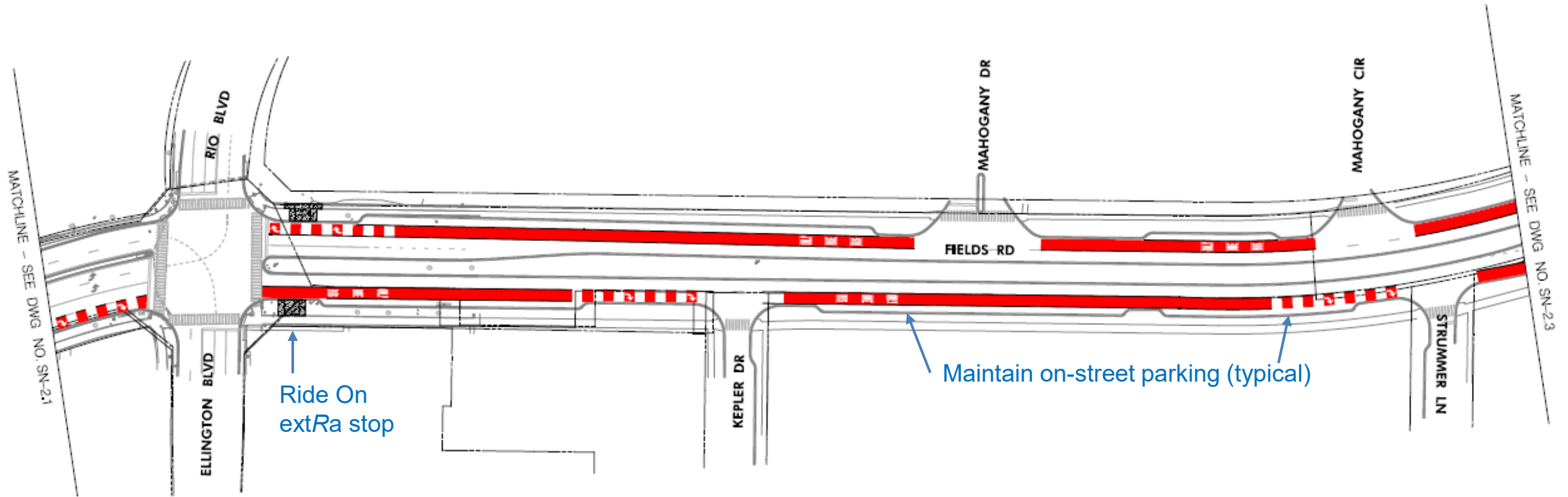
Dedicated transit lanes are proposed within existing roadways to speed bus travel times:

- Repurpose curbside mixed travel/parking lanes for shared bus and bicycle use
- Maintain on-street parking in RIO/Crown Farm
- Traffic may use dedicated lane for right turns





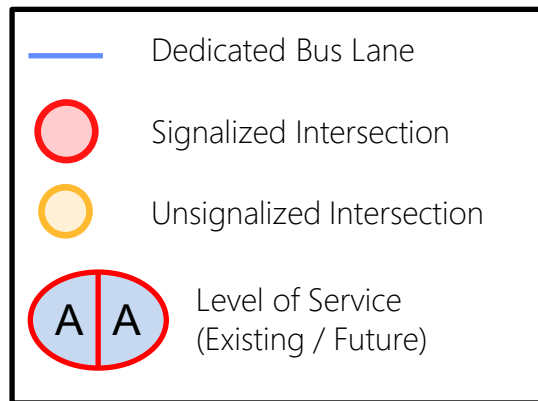
# Dedicated Lane Treatments



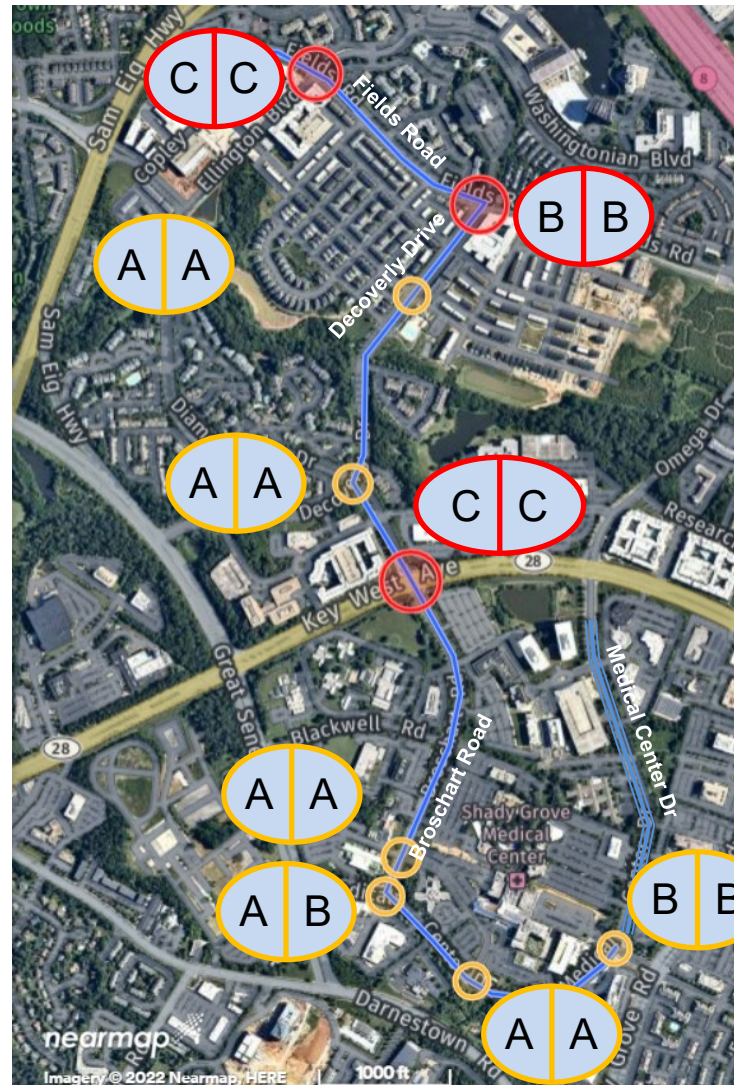


# Traffic Operations

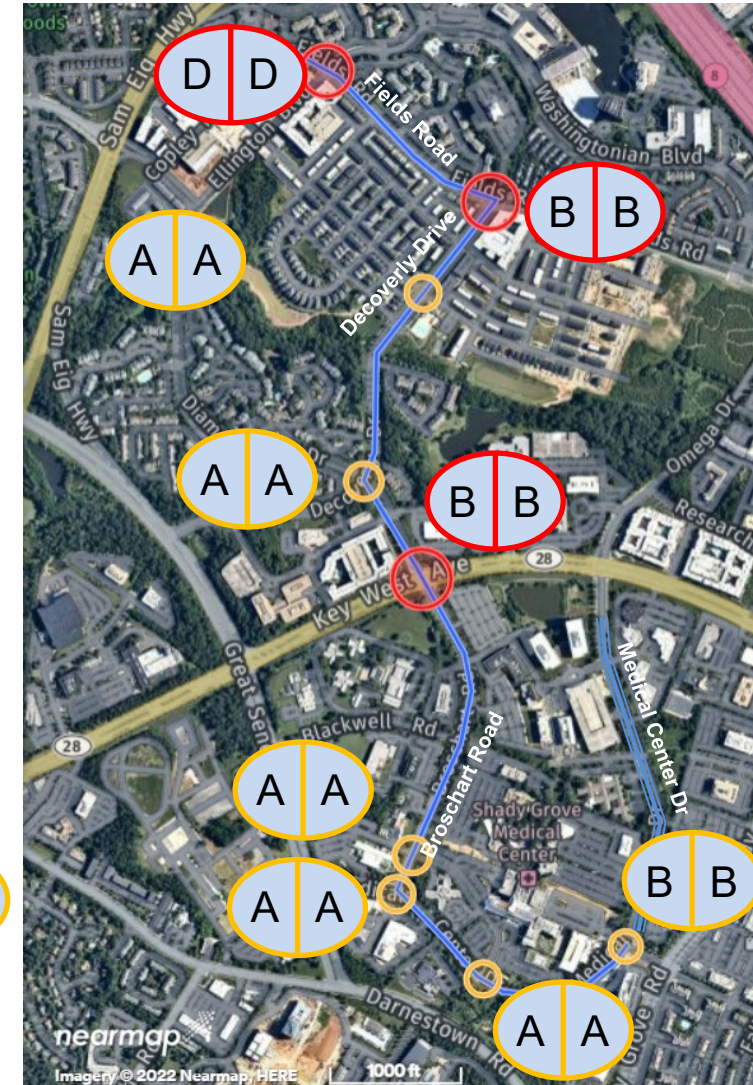
- Traffic analysis compares existing and future (with dedicated bus-bike lanes) traffic capacity
- Future Level of Service acceptable at all intersections is virtually unchanged from existing



## Weekday AM Peak



## Weekday PM Peak





# ***PROJECT BENEFITS***





# Project Benefits



## **Economic Growth**

Great Seneca is at the heart of the County's biotech, life sciences economy



## **Transit Improvements**

Improving the quality of transit attracts more riders and improves the experience for existing riders



## **Connectivity and Collaboration**

Hubs at JHU, Adventist Shady Grove Medical and USG connect workers and higher education in the biotech ecosystem



## **Sustainability**

This will help the County meet ambitious climate goals by shifting more people to transit and implementing zero emission fleet

# Ridership and Economic Growth

Ride On extRa will shift trips away from automobiles and allow further development with less traffic

	Existing (2019) *	Phase 1	Full Network
<b>Great Seneca Ride On extRa Daily Ridership**</b>	<b>n/a</b>	<b>4,000-5,000</b>	<b>10,000+</b>
<b>Transit Mode Share</b>	<b>6.7%</b>	<b>11%</b>	<b>17%</b>
<b>GSSC Non-auto Driver Mode Share (NADMS)</b>	<b>19%</b>	<b>23%</b>	<b>29%</b>
<b>Vehicular Trip Reduction</b>	<b>n/a</b>	<b>-3%</b>	<b>-8-10%</b>

\* Per most recent Biennial Master Plan Monitoring Report

\*\* Forecasting based on analysis using pre-pandemic ridership data and service levels

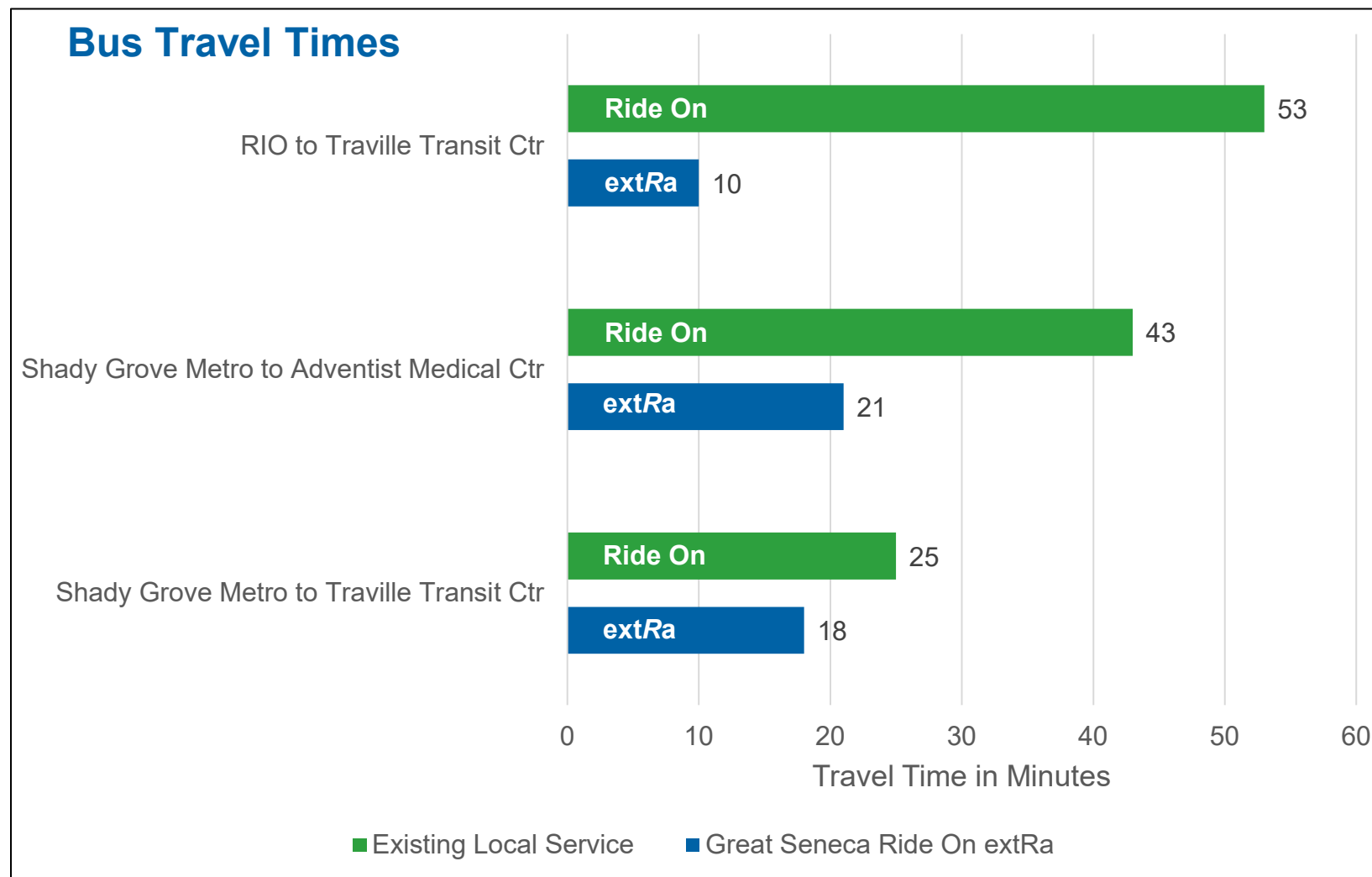
Full Great Seneca Ride On extRa network could satisfy GSSC Master Plan non-auto targets for development approval



# Ride On extRa Travel Time Savings

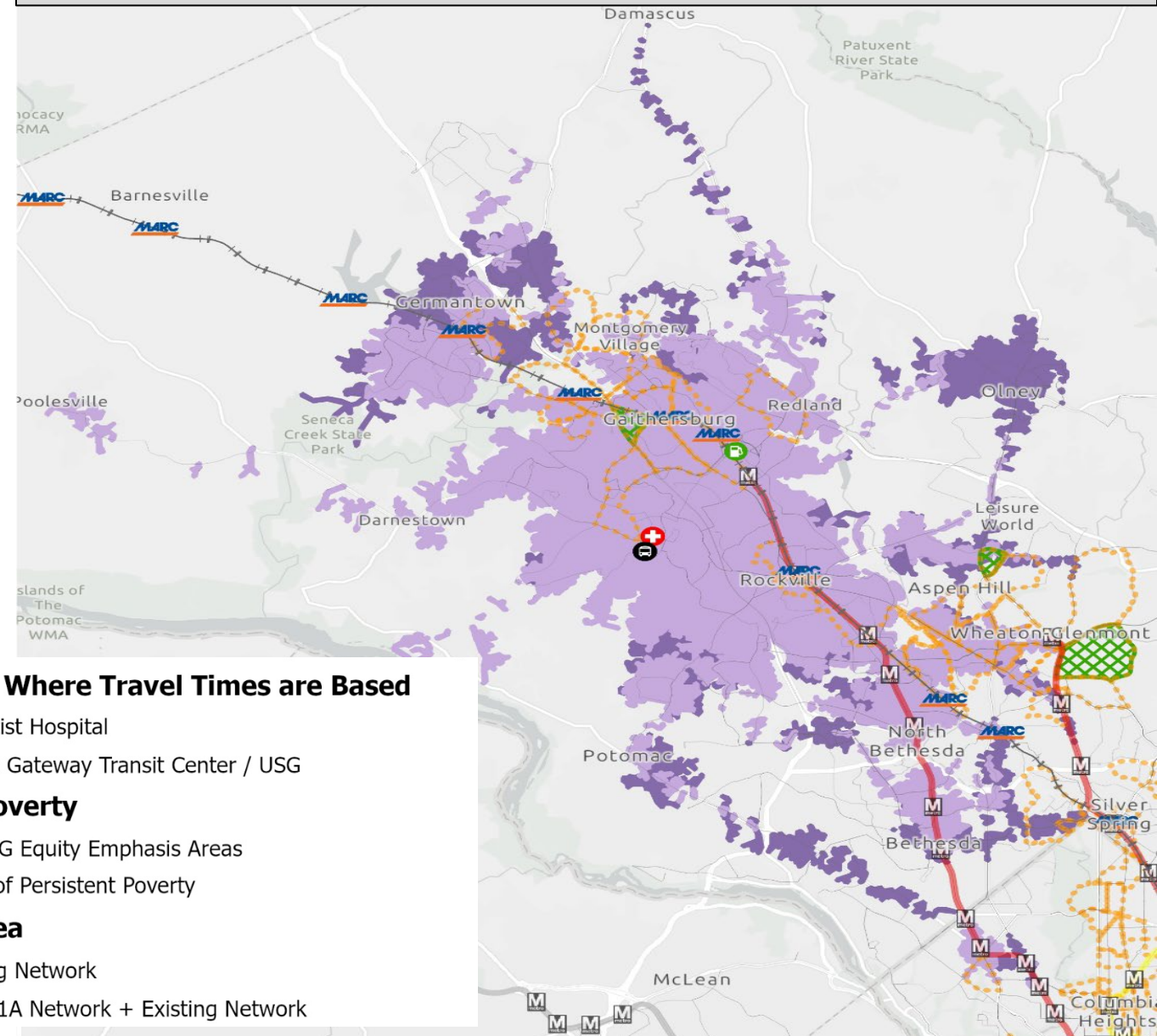
- Dedicated lanes
- Transit signal priority
- Fewer stops
- Direct service through the LSC

Lead to travel time reductions and improved service



# Improving Transit Access

- Increased access to areas within a 60-minute travel timeframe (dark purple)
- Expanded service to equity emphasis areas and areas of persistent poverty





# Zero Emission Bus Fleet



MCDOT to implement zero emission Ride On buses, which aligns with county's sustainability goals



MCDOT is fast tracking Great Seneca Ride On extRa Phase 1 construction and transitioning to battery electric technology after service starts

# Project Timeline





# We Want to Hear From You

Visit the GSTN project website to learn more and sign up for updates:

[Great Seneca Transit Network \(montgomerycountymd.gov\)](http://montgomerycountymd.gov/greatseneca)

Email us:

[greatseneca.transitnetwork@montgomerycountymd.gov](mailto:greatseneca.transitnetwork@montgomerycountymd.gov)

Follow Ride On Bus [@RideOnMCT](#) and MCDOT [@MCDOTNow](#) (Twitter, Facebook, Instagram)

A couple is shown from the waist up, smiling and looking at each other. They are holding several white shopping bags. The woman is on the left, wearing a dark top, and the man is on the right, wearing a plaid shirt. The background is a blurred indoor setting. The entire image is overlaid with a semi-transparent blue filter.

**QUESTIONS AND THANK YOU!**