

## Greentree Road Bridge No. M-0180 Replacement Project

### PUBLIC INFORMATION MEETING

December 10, 2024



East Approach (looking west)

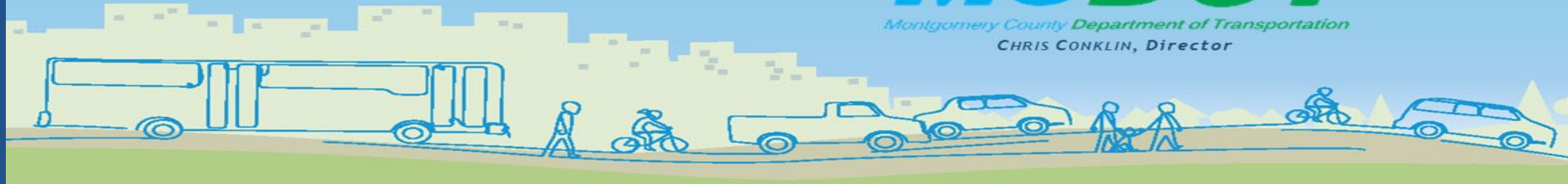


Greentree Road Bridge  
M-0180



West Approach (looking east)

This meeting will be recorded.



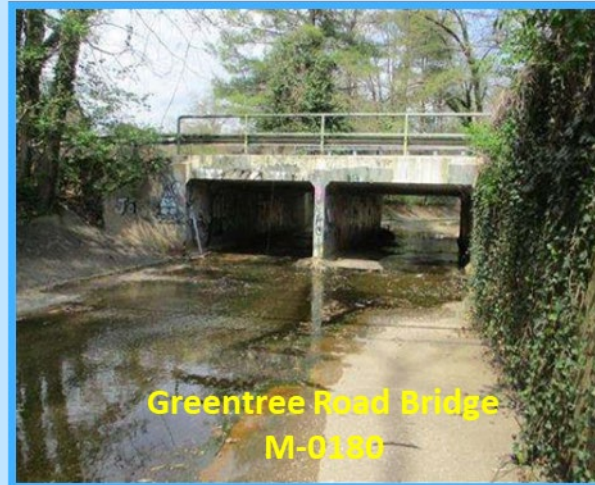
## Greentree Road Bridge No. M-0180 Replacement Project

### PUBLIC INFORMATION MEETING

December 10, 2024



East Approach (looking west)



Greentree Road Bridge  
M-0180



West Approach (looking east)

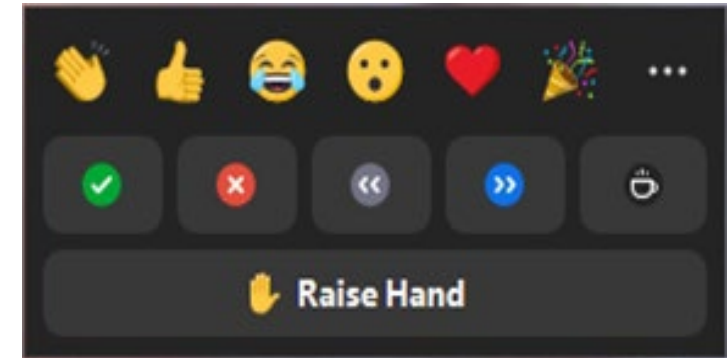
This meeting is being recorded.



# Greentree Road Bridge No. M-0180 over Bulls Run Replacement Project

## Zoom Meeting Controls

- All microphones have been muted and cameras turned off.
- **To reduce the bandwidth of tonight's meeting, please do not turn on your video camera.**
- Following tonight's presentation, you will have the opportunity to provide testimony. There will also be a Question-and-Answer session after the testimony portion if time allows. **Please wait until the presentation ends to raise your hand to testify or ask a question.** Alternatively, you may type your question into the chat box any time during tonight's hearing.
- **To raise your hand** following the presentation, please click on the "Reactions" icon at the bottom of your screen, and then click "Raise Hand."
- **If you called into tonight's meeting via telephone, press \*9 to raise your hand and \*6 to unmute yourself.**



# PURPOSE OF PUBLIC MEETING

- ◆ Introduce project team
- ◆ Present the existing bridge and conditions
- ◆ Present project scope and proposed bridge
- ◆ Present maintenance of traffic during construction
- ◆ Present current project cost estimates, funding and schedule
- ◆ Answer questions and accept feedback



# PROJECT TEAM

## ◆ **Montgomery County Department of Transportation (MCDOT)**

❖ **Brian Copley, P.E.**

❖ **Rashid Abramov, P.E.**

❖ **Eric Willis**

❖ **Michelle Haley**

❖ **Doug Baker**

❖ **Stella Igbinedion**

**Bridge Unit Manager**

**Capital Projects Manager**

**Acting Property Acquisition Chief**

**Contracts Unit Chief**

**Utility Coordinator**

**Work Zone Program Manager**

## ◆ **M-NCPPC Montgomery Planning**

❖ **Sofia Aldrich**

**Transportation Master Planner**

## ◆ **AECOM**

❖ **John Watson, P.E.**

**Project Manager**



# Greentree Road Bridge No. M-0180 over Bulls Run Replacement Project

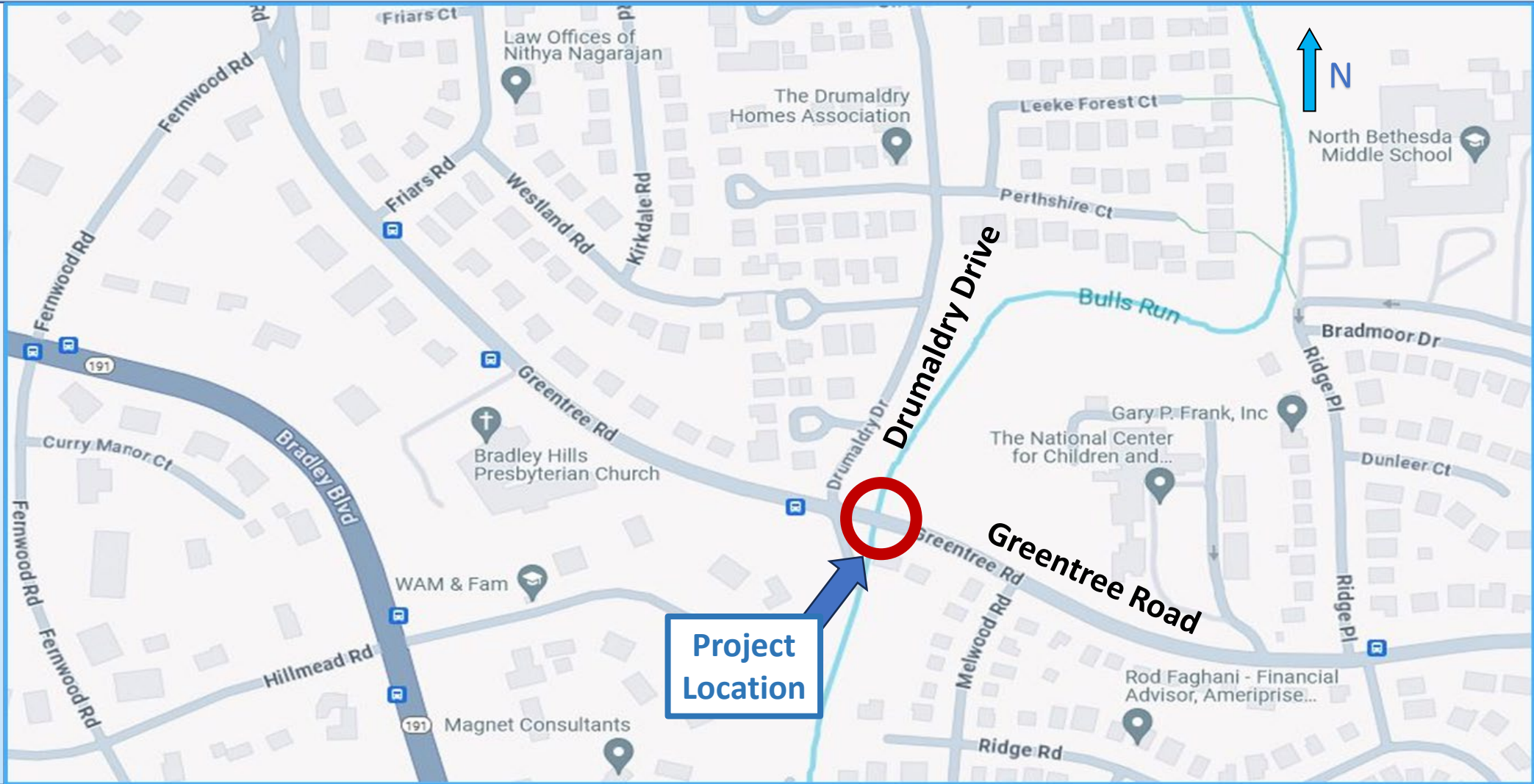


***PLEASE HOLD  
YOUR QUESTIONS  
UNTIL  
THE END***





# PROJECT LOCATION



# LOCAL MASTER PLANS, SPEED LIMIT & TRAFFIC DATA

- ◆ **2018 Montgomery County Bicycle Master Plan:**
  - ❖ **Future Separated Bikeway / Shared Use Path**
- ◆ **2023 Master Plan of Highways and Transitways:**
  - ❖ **Neighborhood Connector (primary residential street)**
- ◆ **Posted Speed Limit:**
  - ❖ **30 MPH**
- ◆ **2021 Traffic Count:**
  - ❖ **Approximately 6,516 vehicles/day**
  - ❖ **Average of 44 bicycles / day**





# EXISTING BRIDGE

- ◆ Built in 1949
- ◆ Two Cell Concrete Box Culvert
- ◆ Reinforced Concrete
- ◆ 24'-10" Total Bridge Length
- ◆ 38'-0" Out to Out Width
- ◆ 30'-3" Clear roadway for two-way traffic
- ◆ W-beam railing on both sides



Elevation View (looking south)



Cell 1 (looking north)



Cell 2 (looking north)



Topside (looking northwest)

# DETERIORATION OF EXISTING BRIDGE

## 1. Roadway and Sidewalk

- ❖ Transverse crack in pavement
- ❖ Sidewalk settlement at the northeast approach



Crack in the Asphalt Pavement at Edge of Culvert  
(western approach)



Northeast Approach Sidewalk Settlement Below  
Sidewalk Over the Structure



# DETERIORATION OF EXISTING BRIDGE

## 2. Concrete Culvert (upstream / downstream ends)

- ❖ Delamination, Cracking, Efflorescence
- ❖ Concrete Spalling



Delamination, Cracking, & Efflorescence at the South headwall & Top Slab of Cell No. 1



Spalling & Delamination at the North Headwall & Top Slab of Cell No. 1



# DETERIORATION OF EXISTING BRIDGE

## 2. Concrete Culvert (inside)

- ❖ Spalled Concrete
- ❖ Exposed / Rusting Reinforcement Steel



Exposed Reinforcement  
Cell 1 Top



Exposed Reinforcement  
Cell 1 Bottom



Exposed Reinforcement  
Cell 2 Top



# PROJECT SCOPE



Aerial View (conceptual rendering)

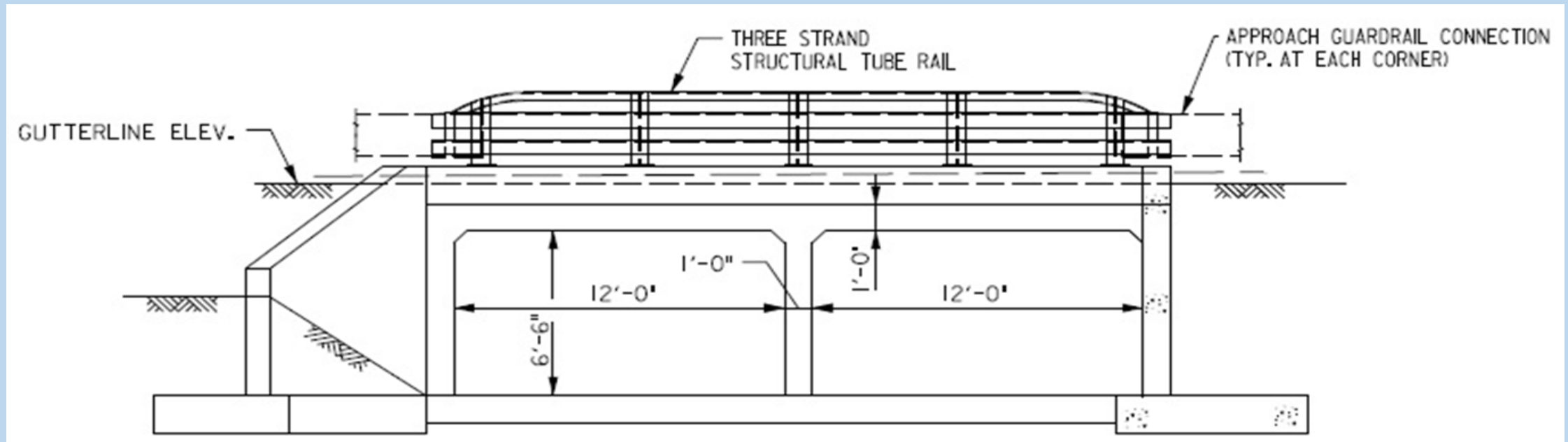


Street View (conceptual rendering)

- ❖ Replacement of Existing Bridge and Stabilization of Stream
- ❖ Temporary Pedestrian / Bicycle Bridge
- ❖ Repaving of Existing Approach Roadways

# PROPOSED BRIDGE

- ◆ Material: Reinforced Concrete (no change)
- ◆ Type: Box Culvert (no change)
- ◆ Bridge Length: 25'-0" (increased by 2 in)
- ◆ Safety: Structural Tube Rail & Approach Guardrail (typical for modern bridges)



Side View Cross Section of Proposed Bridge





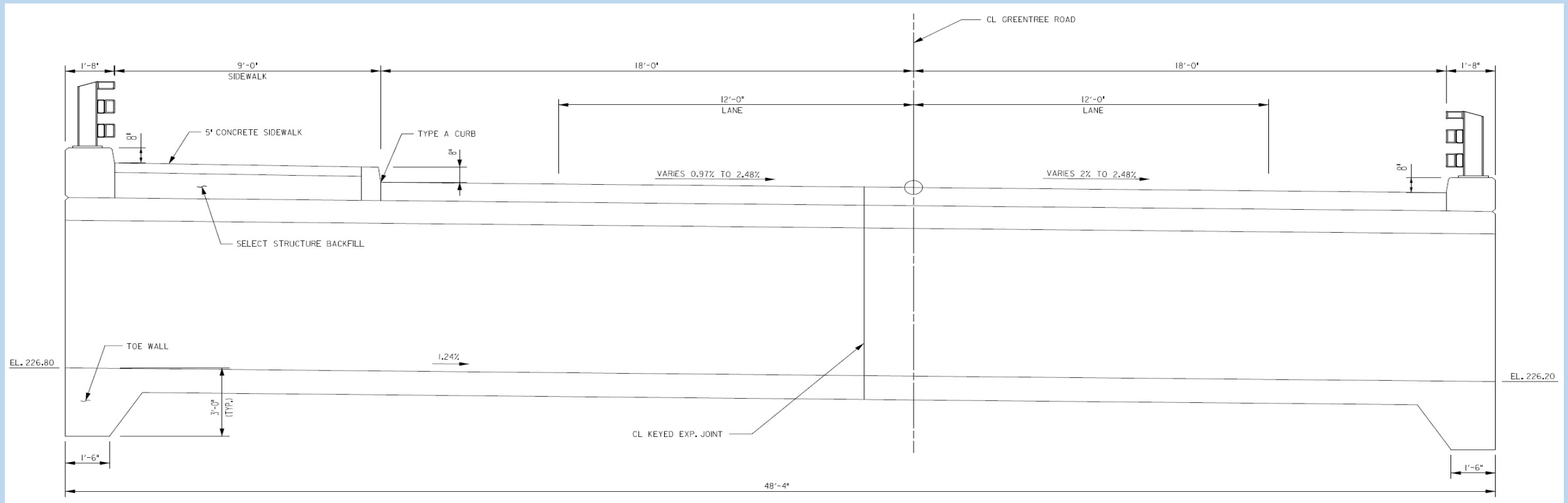
# PROPOSED BRIDGE

- ◆ Out to Out Width:
- ◆ Clear Roadway Width:
- ◆ Safety:

48'-0" (increased by 10-feet, 4-inches)

36'-0" (increased by 5-feet, 9-inches)

Structural Tube Rail & Approach Guardrail  
(typical for modern bridges)



Bridge – Typical Section



# EXISTING BRIDGE & APPROACHES



**Aerial View – Greentree Road Bridge No. M-0180**



# EXISTING ROADWAY ON BRIDGE



Looking East





# PEDESTRIAN BRIDGE (Temporary Condition)



**Aerial View – Greentree Road Bridge No. M-0180**





# PEDESTRIAN BRIDGE (Temporary Condition)



Looking East





# PROPOSED BRIDGE & APPROACHES



**Aerial View – Greentree Road Bridge No. M-0180**





# PROPOSED ROADWAY ON BRIDGE



Looking East





# MAINTENANCE OF TRAFFIC DURING CONSTRUCTION

## Maintain Traffic on Greentree Road – Single Reversible Travel Lane



### PHASE 1 – Close Westbound Lane, Construct Northern Part of Bridge





# MAINTENANCE OF TRAFFIC DURING CONSTRUCTION

## Maintain Traffic on Greentree Road – Single Reversible Travel Lane



### PHASE 2 – Close Eastbound Lane, Construct Southern Part of Bridge

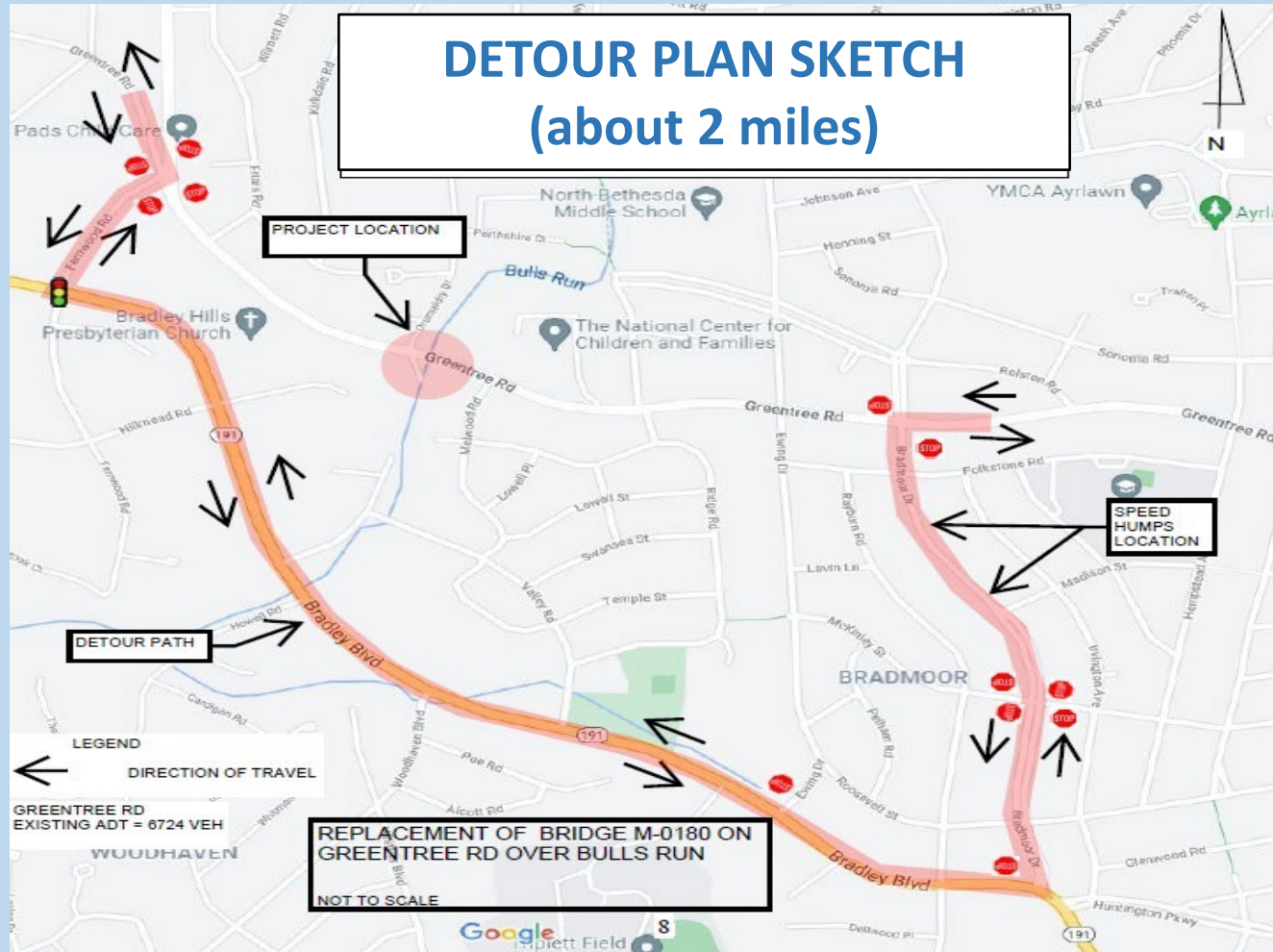




# MAINTENANCE OF TRAFFIC DURING CONSTRUCTION

## Possible Alternate Route

### DETOUR PLAN SKETCH (about 2 miles)



Greentree Road



Fernwood Road



Bradley Boulevard (MD 191)



Bradmoor Drive



Greentree Road



# PROJECT STATUS, FUNDING, COSTS & SCHEDULE

## Project Status:

Preliminary Design Stage (30% Level of Completion)

## Project Funding

- ❖ Federal Funds 80%
- ❖ Montgomery County 20%

## Project Costs

- ❖ \$467,554 Engineering Cost - 30% design (Funded)
- ❖ \$500,000 Estimated Cost to Complete Design (Funded)
- ❖ \$3.6M Estimated Cost to Construct (Not Funded)

## Project Schedule (tentative)

- ❖ Design Complete Spring 2027
- ❖ Begin Construction Fall 2028
- ❖ End Construction Winter 2029/2030





# NEXT STEPS & COMMUNITY INPUT

## Proceed to Final Design based on comments from permitting agencies:

- ❖ Maryland Department of Transportation State Highway Administration
- ❖ Maryland Department of Environment and U.S. Army Corps of Engineers
- ❖ Maryland-National Capital Park and Planning Commission
- ❖ Montgomery County Department of Permitting Services
- ❖ Montgomery County Department of Transportation

## Feedback from the community through **Friday, January 10, 2025**, by:

- ❖ Tonight's Feedback
- ❖ Online Comment on Project Website
- ❖ Email to Project Manager, [Rashid.Abramov@montgomerycountymd.gov](mailto:Rashid.Abramov@montgomerycountymd.gov)

## For Project Information Contact MCDOT's Project Manager:

Rashid Abramov, P.E.

240-777-7207, [Rashid.Abramov@montgomerycountymd.gov](mailto:Rashid.Abramov@montgomerycountymd.gov)

## MCDOT's Project Webpage:

<https://montgomerycountymd.gov/dot-dte/projects/greentree-road-bridge/index.html>





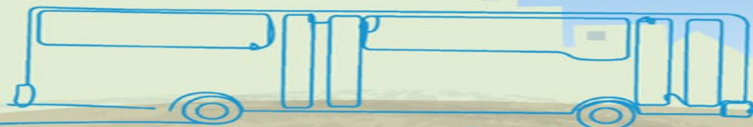
# Comments & Questions?

To Provide Comments or ask a Question . . .

- **Raise your hand** by clicking **“Reactions”** icon at the bottom of your screen and then click **“raise hand.”**
- **If you dialed in by telephone** this evening, press **\*9** on your telephone keypad to raise your hand. When asked to unmute, press **\*6**.
- Type your question into the chat. If time does not allow for all questions to be answered during this evening’s meeting, all questions in the chat will be answered via email in the coming days.

**MCDOT**

Montgomery County Department of Transportation  
www.montgomerycountymd.gov/mcdot





# GREENTREE ROAD BRIDGE NO. M-0180 OVER BULLS RUN REPLACEMENT PROJECT

## THANK YOU FOR ATTENDING

The Project Record will remain open for four weeks to allow any person an opportunity to have their feedback considered.

**Official Closing Date for Submitting Your Feedback**

**Friday, January 10, 2025**

**at 5:00 p.m.**

Submissions may be made via:

Email to the Project Manager, Rashid Abramov:

**[Rashid.Abramov@montgomerycountymd.gov](mailto:Rashid.Abramov@montgomerycountymd.gov)**

Or Via the Online Comment Form on the Project Webpage:

**<https://montgomerycountymd.gov/dot-dte/projects/greentree-road-bridge/index.html>**

