



**MD 355 BRT Corridor Planning Study**  
**Phase 2**  
**Hazardous Materials Technical Report**

DRAFT

**June 2019**

## Table of Contents

1	Introduction .....	3
1.1	MD 355 BRT Project Purpose and Need .....	3
2	Alternatives .....	3
2.1	No-Build Alternative.....	3
2.2	Transportation System Management (TSM) Alternative.....	8
2.3	Alternative A .....	8
2.4	Alternative B .....	8
2.5	Alternative C .....	8
2.6	Alignment Segments .....	8
3	Methodology.....	11
3.1	Data Acquisition .....	11
3.2	Evaluation and Ranking of Properties.....	12
4	Results.....	13
5	Next Steps .....	21

## List of Figures

Figure 2-1: TSM Alternative .....	4
Figure 2-2: Alternative A .....	5
Figure 2-3: Alternative B .....	6
Figure 2-4: Alternative C .....	7
Figure 2-5: Alternative Alignment Segments .....	10

## List of Tables

Table 2-1: Alternative Alignment Segments .....	9
Table 3-1: Facility Ranking Criteria (Potential for Influence) .....	13
Table 4-1: Potential Hazardous Material Issues Along MD 355 BRT Corridor .....	14
Table 4-2: Potential Hazardous Materials Sites Common to All Alternatives (Southern Limit to Middlebrook Road) .....	15
Table 4-3: Potential Hazardous Materials Sites Alternative A (In addition to common sites from Table 4-2) .....	20
Table 4-4: Potential Hazardous Materials Sites Alternative B (in addition to common sites from Table 4-2) .....	20
Table 4-5: Potential Hazardous Materials Sites Alternative C (in addition to common sites from Table 4-2) .....	21
APPENDIX A: Hazardous Material Databases Reviewed (via EDR Report) .....	23
APPENDIX B: Detailed Hazardous Material Locations/Issues .....	26

## 1 Introduction

The Montgomery County Department of Transportation (MCDOT) is preparing a *Corridor Summary Report* for Phase 2 of the MD 355 Bus Rapid Transit (BRT) Planning Study. The project is evaluating detailed concepts for providing enhanced transit service along MD 355 from Bethesda to Clarksburg in Montgomery County, Maryland.

Phase 2 of the MD 355 BRT Study builds upon work completed in Phase 1, which developed Conceptual Alternatives that were evaluated to determine which should move forward for more detailed analysis. These alternatives have been refined and analyzed in further detail in Phase 2. The purpose of this *Hazardous Materials Technical Report* is to identify physical locations and general site conditions associated with the detailed project concepts that may pose a concern for future development of the MD 355 BRT system. Information in this report, described below, will support discussions presented in the *Corridor Summary Report*.

### 1.1 MD 355 BRT Project Purpose and Need

The purpose of the MD 355 BRT Planning Study is to provide a new transit service with higher speed and frequency along MD 355 between Bethesda and Clarksburg. The purpose and need statement has been consolidated into four distinct goals to guide the development of alternatives and as a framework for comparing alternatives:

- Goal 1.* Provide an appealing, functional, and high-quality transit service
- Goal 2.* Improve mobility opportunities, accessibility, and transportation choices for all
- Goal 3.* Support planned development
- Goal 4.* Support sustainable and cost-effective transportation solutions

## 2 Alternatives

Five alternatives, including the No-Build Alternative, are being evaluated as part of Phase 2 of the MD 355 BRT Planning Study. The findings will be summarized in the *Corridor Summary Report* and are assessed in detail in this Technical Report. The four Build Alternatives are shown in **Figures 2-1 through 2-4**. This *Hazardous Materials Technical Report* prepared in support of the *Corridor Summary Report* assesses existing conditions and the potential hazardous materials concerns associated with each alternative.

### 2.1 No-Build Alternative

The No-Build Alternative would include no additional infrastructure improvements other than those already planned and programmed, including the Ride on extRa service launched in October 2017 from the Medical Center Metro Station to Lakeforest Transit Center. This service includes Transit Signal Priority (TSP) at key locations along the route.



Figure 2-1: TSM Alternative

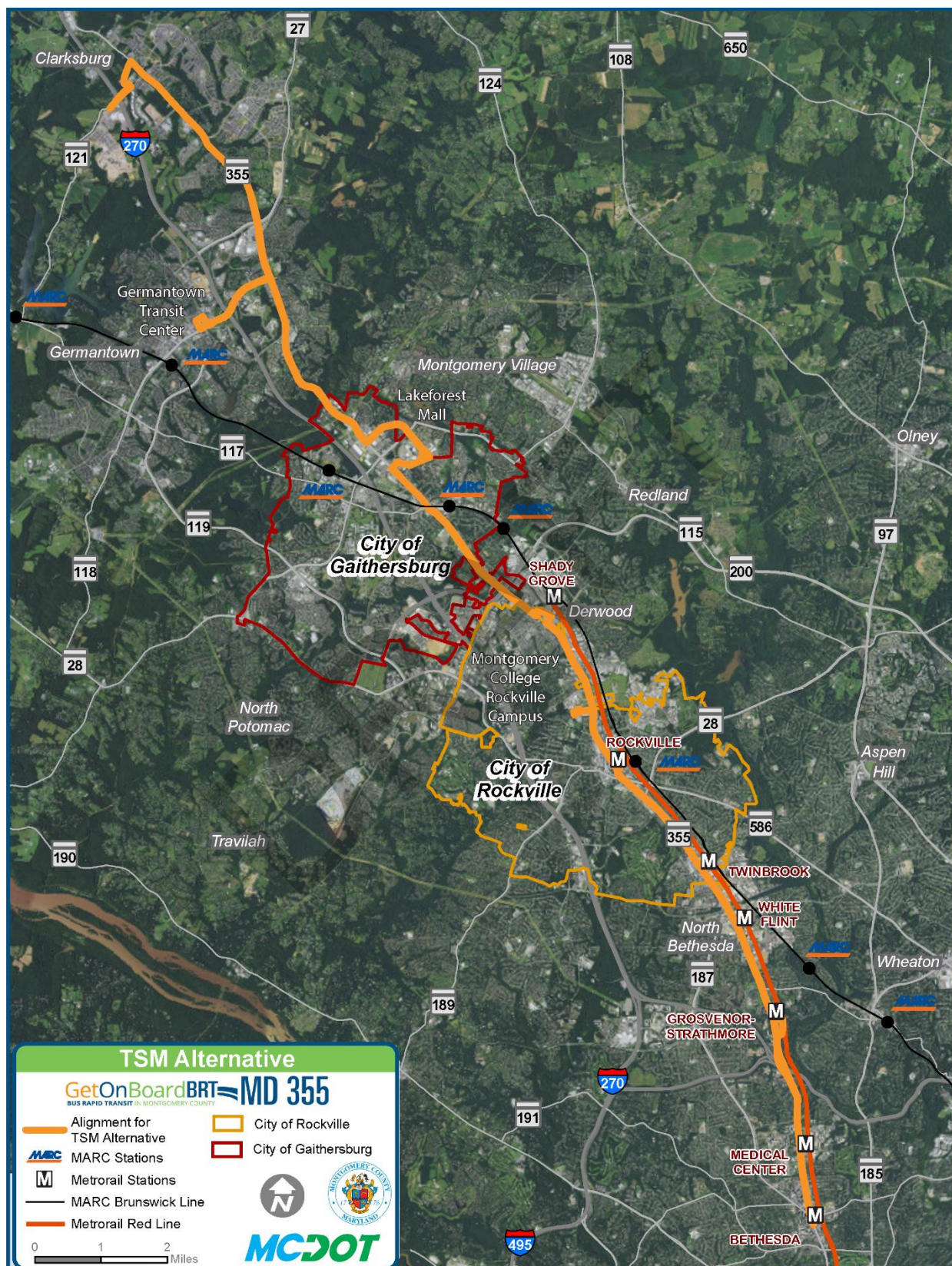




Figure 2-2: Alternative A

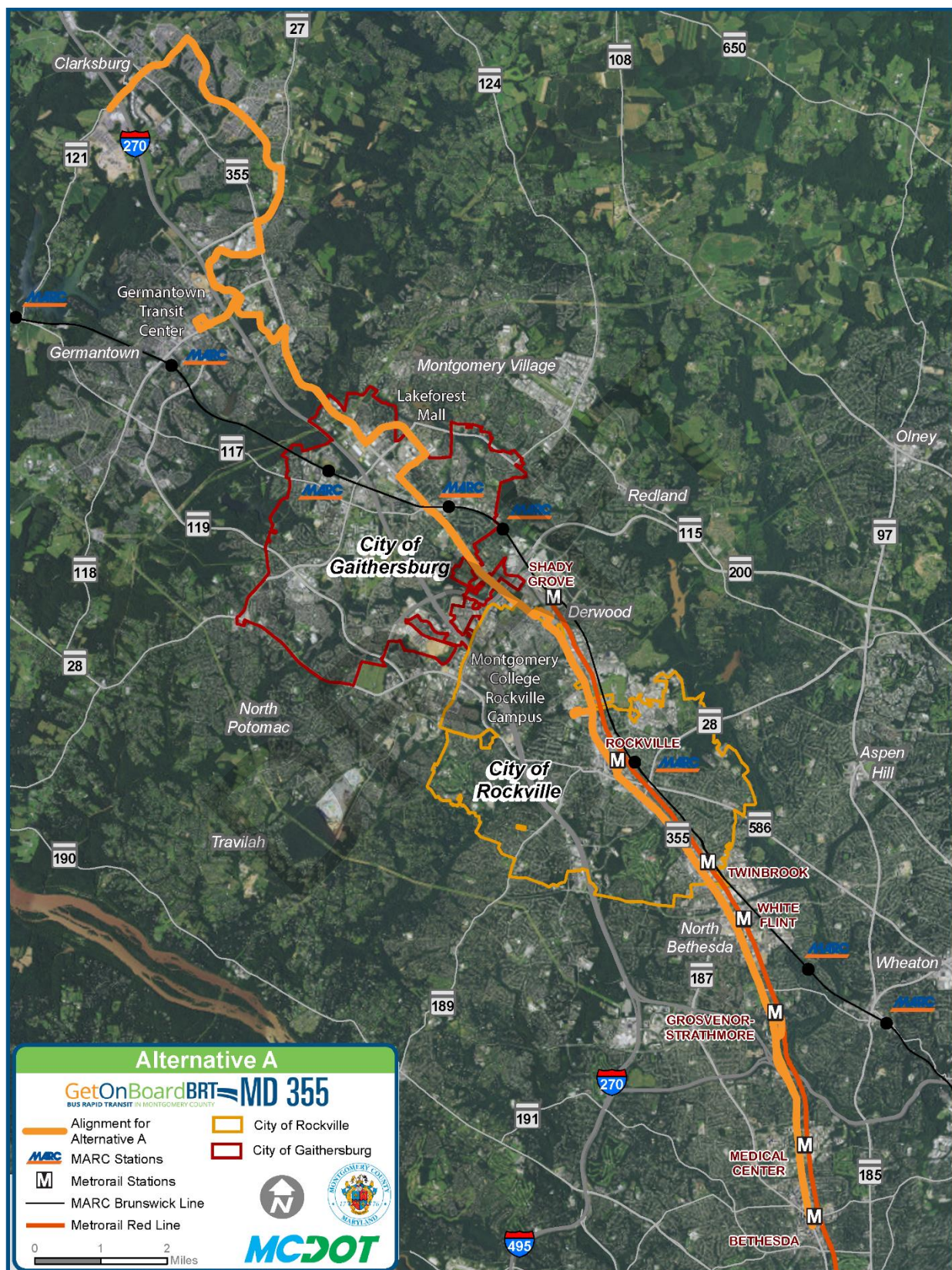




Figure 2-3: Alternative B

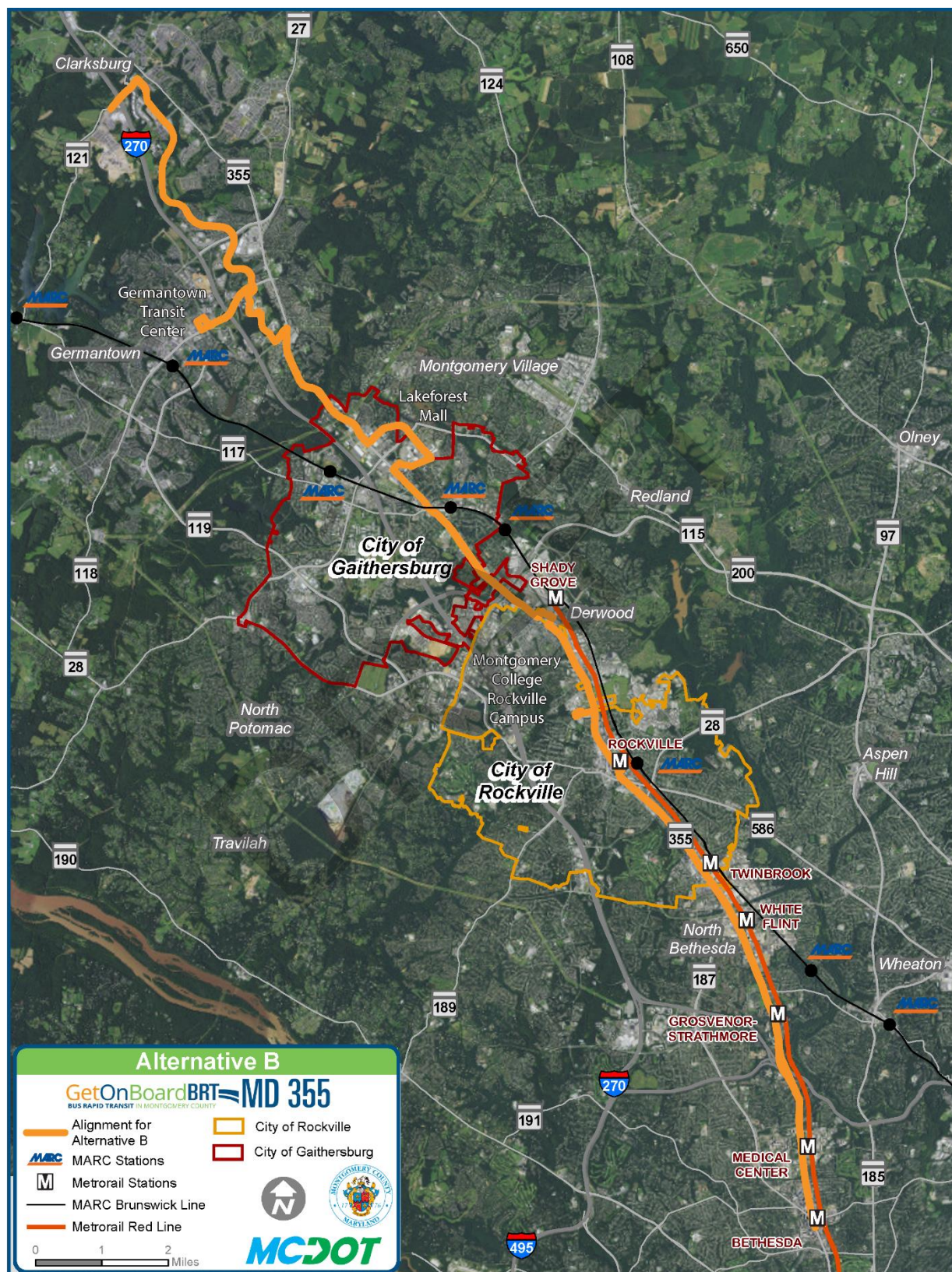
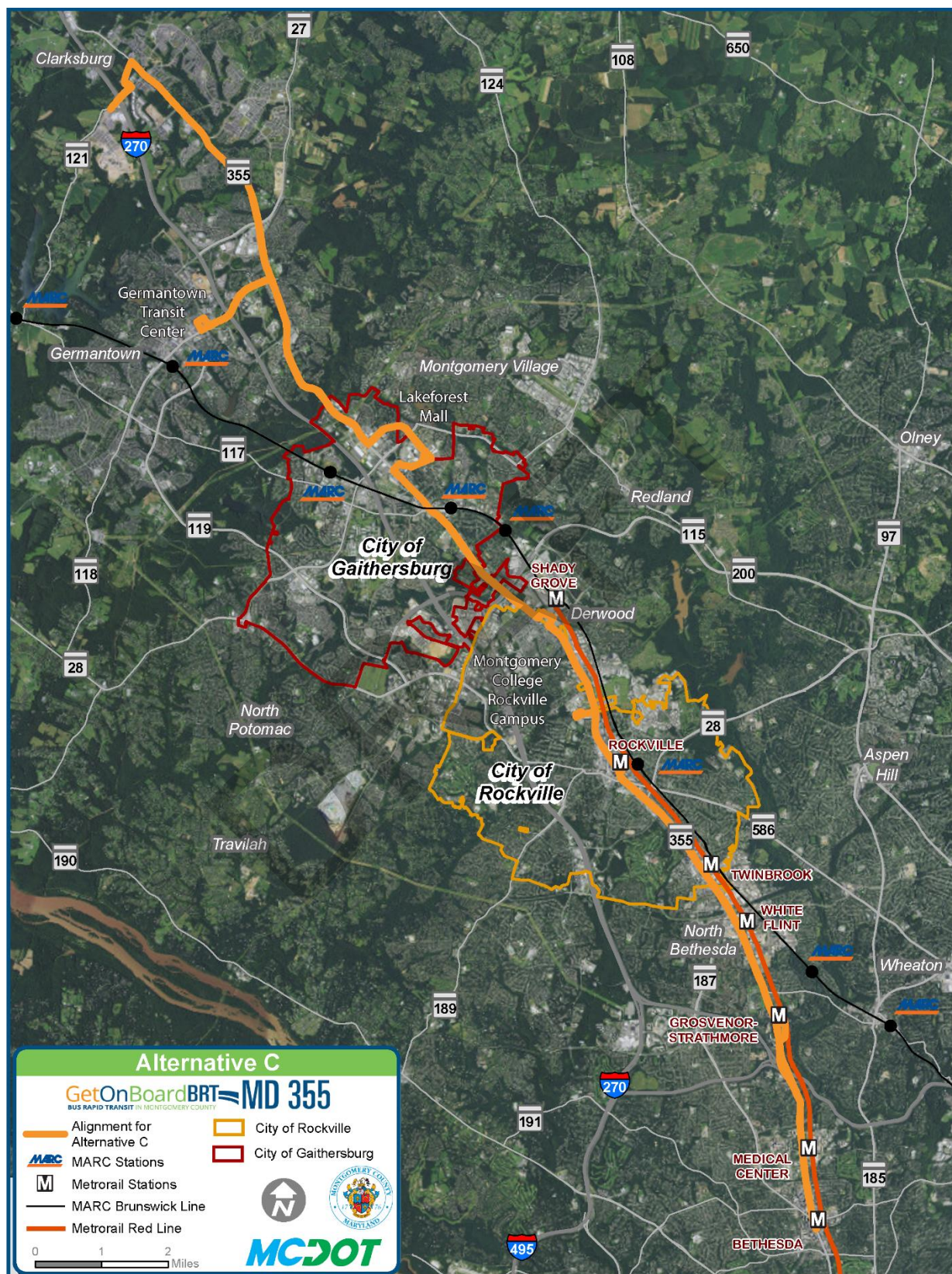




Figure 2-4: Alternative C





## 2.2 Transportation System Management (TSM) Alternative

The TSM Alternative would consist of enhanced bus service operating in mixed traffic using existing lanes from the Bethesda Metrorail Station to Clarksburg along MD 355 and along Clarksburg Road to the Clarksburg BRT terminus.

This Alternative would extend the Ride On extRa service south from the Medical Center Metro Station to Bethesda and north from Lakeforest Transit Center to Clarksburg and would include additional TSP along the route.

## 2.3 Alternative A

Alternative A would incorporate elements of the TSM Alternative plus additional elements to create a BRT service with limited infrastructure improvements. Alternative A would consist of BRT service, operating in mixed traffic using existing lanes from the Bethesda Metrorail Station to Clarksburg along MD 355. In Segment 7, the BRT would travel along Middlebrook Road to Observation Drive, Goldenrod Lane, Germantown Road, then back to Observation Drive to Ridge Road, and across MD 355 to Snowden Farm Parkway to Stringtown Road to the BRT Terminus at Clarksburg.

Alternative A would include additional TSP along with queue jumps at key locations along the route. It would also include off-board fare collection, level boarding, articulated buses, and Flash branding.

## 2.4 Alternative B

Alternative B would generally operate in dedicated median lanes where feasible and in mixed traffic in Segments 1 and 7. In Segment 7, the BRT would travel along Middlebrook Road to Observation Drive, including the unbuilt portion, to Stringtown Road to the BRT Terminus at Clarksburg.

Alternative B would include additional TSP at key locations along the route, off-board fare collection, level boarding, articulated buses, and Flash branding.

## 2.5 Alternative C

Alternative C would generally operate in dedicated curb lanes where feasible. In Segment 7, the BRT would operate in mixed traffic along MD 355 from Middlebrook Road to the BRT Terminus at Clarksburg, via Clarksburg Road and Stringtown Road.

Alternative C would include additional TSP along with queue jumps at key locations along the route. It would also include off-board fare collection, level boarding, articulated buses, and Flash branding.

## 2.6 Alignment Segments

Due to the existing conditions that vary along MD 355 as the roadway transitions from an urban environment in downtown Bethesda to a suburban setting in Clarksburg, the corridor was divided into seven segments during Phase 1 of this study and carried forward into Phase 2. The segments were primarily geographically based with each having its own set of characteristics, opportunities, challenges,

and constraints. The seven segments geographic descriptions are listed in **Table 2-1** and shown below in **Figure 2-5**.

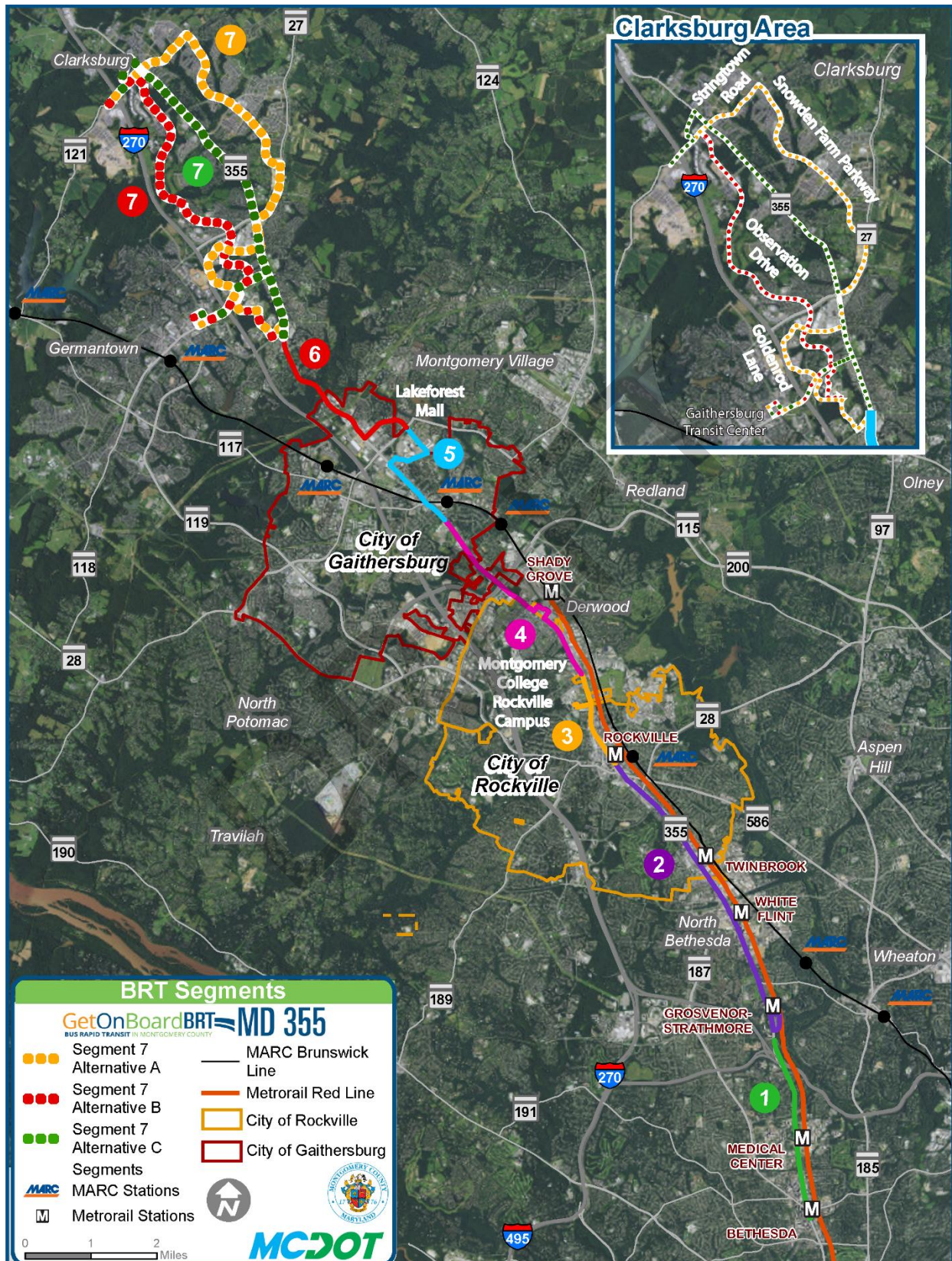
**Table 2-1: Alternative Alignment Segments**

Segment	Geographic Description
<b>1</b>	Bethesda Metrorail Station to Grosvenor Metrorail Station
<b>2</b>	Grosvenor Metrorail Station to Dodge Street
<b>3</b>	Dodge Street to College Parkway
<b>4</b>	College Parkway to Summit Avenue
<b>5</b>	Summit Avenue to MD 124
<b>6</b>	MD 124 to Middlebrook Road
<b>7</b>	Middlebrook Road to Clarksburg

Given the length of the corridor and its varying characteristics and uses, it is expected that a Recommended Alternative would be constructed in stages. In addition, a Recommended Alternative could be pieced together from segments of different alternatives to form a “hybrid” Recommended Alternative. In order to facilitate the identification of a Recommended Alternative, the alternative benefits and impacts have been quantified, as appropriate, based on the seven roadway alignment segments.



Figure 2-5: Alternative Alignment Segments



### 3 Methodology

The purpose of this Hazardous Materials Technical Report is to identify, to the extent feasible, potential recognized environmental conditions (RECs) at a corridor-level in proximity to the alternatives evaluated in the MD 355 BRT Study. The report (1) documents historical and existing conditions as an information baseline for future due diligence activity and (2) assesses the likelihood of encountering contaminated materials in areas of substantial ground disturbance associated with the MD 355 BRT alternatives.

RECs are defined by the American Society for Testing Materials (ASTM) Standard Practice E1527-13 (Standard Practice for Environmental Site Assessments: Phase I ESA Process) as “the presence or likely presence of any hazardous substances or petroleum products in, on, or at a property: (1) due to a release to the environment; (2) under conditions indicative of a release to the environment; or (3) under conditions that pose a material threat of a future release to the environment.”

Although the investigation tasks described were performed in general conformance with the guidelines set forth within the ASTM E1527-13 standard, this technical report does not constitute a full Phase I Environmental Site Assessment (ESA). The report is considered a qualitative review and attempts to evaluate certain locations along the MD 355 BRT corridor that have a history of chemical usage and the potential that such usage may have impacted the soil and/or groundwater which may be encountered during the construction and operation of the project.

The investigation consisted of an examination of current and historical activities and conditions, and a review of local, state, and federal regulatory database records. No sampling or chemical analysis of soils, surface water, or groundwater was performed and no interviews with property owners or facility managers were completed.

Generally, the screening encompassed the area within 0.25 mile (1,320 feet) from the centerline of the study alternatives. Additional distances were screened for certain types of potential hazards that may have a larger influence area (up to 1.0 mile) from the study alternatives (**Table 3-1**).

#### 3.1 Data Acquisition

Evaluation of potential hazardous materials concerns at this stage of project development has been based on an extensive desktop review of known information available from governmental agencies, including the U.S. Environmental Protection Agency (EPA) and the Maryland Department of the Environment (MDE). Property and topographic characteristics of locations of interest were also evaluated using information from the on-line Montgomery County Map Viewer.

Primary information was obtained through an Environmental Data Resources, Inc. (EDR) DataMap™ Environmental Atlas™ report covering the alternatives under consideration. The EDR report provided extensive results from over 100 federal, state, and tribal hazardous material databases and EDR and historical topographic mapping.

Additional detailed reviews of the following MDE databases were completed to supplement EDR report findings:



- Oil Control Program (OCP) data of registered Underground Storage Tank (UST) Facilities to identify dates of UST closure or removal;
- OCP Case Information database to verify the status of open cases; and
- Land Restoration Program (LRP) database to determine the areal extent of LRP sites and activities.

### 3.2 Evaluation and Ranking of Properties

Based on the findings of the EDR report and supplemental database and mapping information review, properties with potential hazardous materials concerns were ranked on their potential *to affect or be affected by* (i.e. influence) the proposed MD 355 BRT alternatives. Site location, topography, and status were evaluated to determine the appropriate ranking category. The ranking system, modified from ASTM 1527-13 for corridor projects, provides for levels of potential hazardous materials involvement from Ranking 1 (high potential influence) to Ranking 4 (low potential influence) (**Table 3-1**).

- Rank 1 (High Potential for Influence): Locations generally associated with underground storage tanks (USTs) containing petroleum fuel products, gasoline stations, automotive repair facilities, dry cleaning facilities, and active solid waste handlers. These sites may be associated with unknown releases of contaminants to the surrounding environment.
- Rank 2 (High Potential for Influence): These locations are generally related to documented/historic releases of contaminants to the surrounding environment which are under a regulatory program for management/remediation activities.
- Rank 3 (Medium/High Potential for Influence): Locations with USTs containing other petroleum products not included under Rank 1 (e.g. residential heating oil) and petroleum above ground storage tanks (ASTs).
- Rank 4 (Low Potential for Influence): All other sites, including locations downgradient or substantive distance from alternatives and other sites with no documented concerns.

The following assumptions and best professional judgement decisions were incorporated into the determination of applicable ranks for identified sites:

- Closed Oil Control Program cases: For closed Oil Control Program cases, it was assumed that cleanup was completed in accordance with MDE OCP acceptable levels. Therefore, these sites (were no other concerns were noted) were not ranked based on their closed status.
- Drycleaners: All properties with active registered MDE drycleaners were ranked, unless they were located downgradient of the corridors. Drycleaners on the EDR Historical Cleaner List or listed as inactive MDE drycleaners were included or excluded based on professional judgement of the available information (number of years active, how long ago they were active, Resource Conservation and Recovery Act (RCRA) generator status type, and the extent of apparent redevelopment after the facility stopped operations).

- EDR Orphan List Sites: The list of EDR orphan sites (those with poor or inadequate database address information for specific location/mapping purposes) was reviewed and the vast majority of the properties were able to be manually located using resource name, landmark information, and available community mapping. Those sites that demonstrated potential environmental issues and were located within the applicable search radius were ranked.

**Table 3-1: Facility Ranking Criteria (Potential for Influence)**

Facility Type	Screening Distance (miles) from centerline of Study Alternatives
<b>Rank 1: High Potential for Influence (potential unknown contamination)</b>	
Automobile Repair Facilities. Identified based on name and information available	0.25
MD Registered Underground Storage Tanks (UST) containing gasoline/gasohol, jet fuel, kerosene fuel, waste oil, or solvents	0.25
MD Solid Waste Facilities/Landfill Sites (SWF/LF)	1.0
Historical Cleaners	0.125
MD Recycling Directory (MD SWRCY)	0.50
MD Drycleaners (Active and Inactive)	0.25
<b>Rank 2: High Potential for Influence (known contamination under regulatory management)</b>	
RCRA Corrective Action Activity (CORRACTS)	1.0
Open MDE Oil Control Program Cases	0.50
MDE Land Restoration Program (LRP)	0.50
MDE Voluntary Cleanup Program (VCP)	0.50
MD Institutional Controls Program (INST CONTROLS)	0.50
Maryland State Hazardous Waste Site (SHWS)	1.0
RCRA - Treatment, Storage and Disposal (RCRA-TSDF)	0.50
Superfund Enterprise Management System (SEMS)	0.50
Regulatory database listed sites that could not be otherwise classified, due to insufficient location data or regulatory information.	NA
<b>Rank 3: Medium/High Potential for Influence</b>	
USTs containing materials other than listed in Rank 1	0.25
MDE Oil Operations Permit for ASTs	0.25
<b>Rank 4: Low Potential for Influence</b>	
All other properties (includes locations downgradient or substantive distance from alternatives and other sites with no documented concerns)	NA

## 4 Results

This investigation does not attempt to measure the severity of hazardous materials or regulated materials or characterize individual Recognized Environmental Conditions (RECs). Rather, the following rankings can be used to identify areas of concern based on the potential to encounter contamination during construction.



Based on the information derived from the hazardous waste database search and a desktop review of locations, potential hazardous material issues are noted along each of the Build Alternatives. **Table 4-1, Potential Hazardous Material Issue Types** refers to specific types of activities and associated hazardous materials that are normally handled which pose the potential for release. The table identifies the number of potential issues per alternative. Rank 1 issues are the most likely to pose an adverse concern associated with right-of-way acquisition and construction of the alternatives. Rank 2 and 3 issues generally have reduced potential, in comparison with Rank 1 issues), to present an adverse concern for the proposed action. **Potential Hazardous Materials Locations** refers to the number of geographic locations where the material issue types are found throughout the corridor. The number of material issue types is greater than the number of locations, as some locations may involve multiple activities of potential concern.

Tables 4-2 through 4-5 lists the potential hazardous materials sites for the Build Alternatives.

**Table 4-1: Potential Hazardous Material Issues Along MD 355 BRT Corridor**

Potential Issue	TSM Alternative	Alternative A	Alternative B	Alternative C
<b>Potential Hazardous Material Issue Types (# of issue types)</b>				
<b>Rank 1</b>				
Automobile Repair Facility	41	40	40	41
Drycleaner (Active)	7	7	7	7
Drycleaner (Inactive/ Historical)	23	24	22	23
MD SWCY	1	1	1	1
SWF/LF	1	1	1	1
UST Rank 1	39	36	35	39
Subtotal Rank 1 Concerns	<b>106</b>	<b>109</b>	<b>106</b>	<b>112</b>
<b>Rank 2</b>				
CORRACTS	2	2	2	2
RCRA-TSDF	2	2	2	2
LRP	30	30	30	30
VCP	24	24	24	24
Institutional Controls	19	19	19	19
SEMS	2	2	2	2
MD SHWS	2	2	2	2
Open OCP Case	6	6	6	6
Subtotal Rank 2 Concerns	<b>87</b>	<b>87</b>	<b>87</b>	<b>87</b>
<b>Rank 3</b>				
Aboveground Storage Tank (Oil Ops Permit)	6	8	8	6
UST Rank 3	19	19	19	19
Subtotal Rank 3 Concerns	<b>25</b>	<b>27</b>	<b>27</b>	<b>25</b>
<b>TOTAL Potential Hazardous Materials Locations* (# of locations)</b>				
	174	173	170	174

\* Note: The total number of locations noted is less than the total number of concerns, as some locations exhibit multiple potential concern types.

**Table 4-2: Potential Hazardous Materials Sites Common to All Alternatives  
(Southern Limit to Middlebrook Road)**

Rank	Name	Address	City	Type
1	\$1.75 DRYCLEAN TOWN	15813 FREDERICK ROAD	ROCKVILLE	Drycleaner (Active)
1	7-ELEVEN #27591	19700 FREDERICK ROAD	GERMANTOWN	UST
1	7-ELEVEN #32879	3 PROFESSIONAL DRIVE	GAITHERSBURG	UST
1	7-ELEVEN, INC. #23693	15821 FREDERICK ROAD	DERWOOD	UST
1	ALL TUNE & LUBE	15563 F & G FREDERICK ROAD	ROCKVILLE	Auto
1	AMOCO OIL COMPANY	1910 ROCKVILLE PIKE	ROCKVILLE	UST
1	BETHESDA SVC CTR OMC T/A B-CC SHELL	8240 WISCONSIN AVE	BETHESDA	UST
1	BETHESDA VALET	8010 WISCONSIN AVE	BETHESDA	Drycleaner (Inactive/ Historical)
1	BETHESDA VALET	7844 WISCONSIN AVE	BETHESDA	Drycleaner (Inactive/ Historical)
1	BRITE CLEANERS AND RIAN CLEANERS	9617 LOST KNIFE ROAD	GAITHERSBURG	Drycleaner (Inactive/ Historical)
1	CDOHY, INC	11411 ROCKVILLE PIKE	KENSINGTON	Auto
1	CHEVY CHASE MITSUBISHI	7701 WISCONSIN AVENUE	BETHESDA	Auto
1	CHEVY CHASE TRANSMISSIONS INC AND CHEVY CHASE CARS, INC.	7725 WISCONSIN AVE	BETHESDA	Auto
1	CLEANERS MAX	804 ROCKVILLE PIKE	ROCKVILLE	Drycleaner (Active)
1	COACH CLEANERS	18749 N FREDERICK AVE	GAITHERSBURG	Drycleaner (Inactive/ Historical)
1	CONGRESSIONAL SUNOCO	1469 ROCKVILLE PIKE	ROCKVILLE	UST
1	CONTINENTAL AUTO CRAFTSMEN	15557 E FREDERICK RD	ROCKVILLE	Auto
1	COTTMAN TRANSMISSION CENTER	19600 FREDERICK RD	GERMANTOWN	Auto
1	COURTESY CLEANERS - ROLLINS AVENUE	108 ROLLINS AVENUE	ROCKVILLE	Drycleaner (Inactive/ Historical)
1	D & D AUTO BODY	15207 FREDERICK RD STE 2D	ROCKVILLE	Auto
1	DRY CLEAN EXPO	11130 ROCKVILLE PIKE	ROCKVILLE	Drycleaner (Inactive/ Historical)
1	DRYCLEAN PRO - ROCKVILLE PIKE	11802 ROCKVILLE PIKE	ROCKVILLE	Drycleaner (Inactive/ Historical)
1	DRYCLEAN WAREHOUSE	112 FREDERICK AVENUE, NORTH	GAITHERSBURG	Drycleaner (Active)
1	DRYCLEANER, THE - WALNUT STREET	615 FREDERICK ROAD	GAITHERSBURG	Drycleaner (Inactive/ Historical)
1	EDNAS CLEANERS	1061 ROCKVILLE PIKE	ROCKVILLE	Drycleaner (Inactive/ Historical)
1	EURO MOTOR CARS	15401 FREDERICK RD	ROCKVILLE	Auto
1	EXECUTIVE SHELL #863	12151 ROCKVILLE PIKE	ROCKVILLE	UST
1	EXXON #22800	700 ROCKVILLE PIKE	ROCKVILLE	UST
1	EXXON #25719 (SOUTHSIDE OIL LLC)	11430 ROCKVILLE PIKE	ROCKVILLE	Open OCP Case, UST
1	EXXON #27470/0565-8620	16425 S. FREDERICK AVE.	GAITHERSBURG	UST



Rank	Name	Address	City	Type
1	EXXON #27571 / #0044-3606	448 NORTH FREDERICK AVENUE	GAITHERSBURG	UST
1	EXXON #28245	11433 ROCKVILLE PIKE	ROCKVILLE	UST
1	EXXON #28448/01903277	15211 FREDERICK ROAD	ROCKVILLE	UST
1	EXXON #28808	408 N. FREDERICK AVENUE	GAITHERSBURG	UST
1	FOX CHAPEL CLEANERS AND YEAL INC	19729 FREDERICK AVE	GERMANTOWN	Drycleaner (Inactive/ Historical)
1	FREESTATE GAS STATION	510 HUNGERFORD DRIVE	ROCKVILLE	UST
1	GAITHERSBURG CLEANERS	211 N FREDERICK AVE STE B	GAITHERSBURG	Drycleaner (Inactive/ Historical)
1	GAITHERSBURG LIBERTY LLC (WALNUT HILL LIBERTY)	623 SOUTH FREDERICK AVENUE	GAITHERSBURG	UST
1	GEORGETOWN PREPARATORY SCHOOL	10900 ROCKVILLE PIKE	ROCKVILLE	UST
1	GETTY GAS STATION	801 HUNGERFORD DR	ROCKVILLE	UST
1	GULF STATION MD-0091	15805 FREDERICK ROAD	DERWOOD	UST
1	HALOTA ENTERPRISES INC	943 N FREDERICK AVE	GAITHERSBURG	Auto
1	HERSHEYS CLEANERS INC			Drycleaner (Active)
1	HERSON'S, INC.	15525 FREDERICK ROAD	ROCKVILLE	Auto
1	JIFFY LUBE	806 ROCKVILLE PIKE	ROCKVILLE	Auto
1	JIMS AUTO HOSPITAL INC	15563 FREDERICK RD L	ROCKVILLE	Auto
1	KING LINCOLN MERCURY INC	953 NORTH FREDERICK AVE	GAITHERSBURG	Auto
1	KING PONTIAC	16200 FREDERICK RD	GAITHERSBURG	Auto
1	LAKE FOREST OLDSMOBILE INC.	905 N. FREDERICK AVE.	GAITHERSBURG	Auto
1	LEXUS OF ROCKVILLE	15501 FREDERICK RD	ROCKVILLE	Auto
1	M & M INC	1331 ROCKVILLE PIKE STE H	ROCKVILLE	Drycleaner (Inactive/ Historical)
1	MATHIAS SERVICENTER	22 W DIAMOND AV	GAITHERSBURG	Auto
1	MERCHANTS TIRE & AUTO NO 6028	861 RUSSELL AVE	GAITHERSBURG	Auto
1	MIDAS	204 N. FREDERICK AVENUE	GAITHERSBURG	Auto
1	MIDAS	1460 ROCKVILLE PIKE	ROCKVILLE	Auto
1	MIDDLEBROOK SUNOCO	11606 MIDDLEBROOK ROAD	GERMANTOWN	UST
1	MOBIL - MD 721	890 ROCKVILLE PIKE	ROCKVILLE	UST
1	MONTGOMERY WARDS AUTO CENTER	600 FREDERICK RD # H	GAITHERSBURG	Auto
1	MONTROSE JEEP EAGLE/ MONTROSE MOTORS	19560 FREDERICK ROAD	GERMANTOWN	Auto
1	MR TIRE #42	15119 FREDERICK RD	ROCKVILLE	Auto
1	NATIONAL INSTITUTES OF HEALTH	9100 ROCKVILLE PIKE BLDG 3	BETHESDA	UST
1	NATIONAL INSTITUTES OF HEALTH	9000 ROCKVILLE PIKE	BETHESDA	UST
1	NAVAL SUPPORT ACTIVITY BETHESDA	8901 WISCONSIN AVE	BETHESDA	UST
1	NTB 584	15609 FREDERICK RD	ROCKVILLE	Auto

Rank	Name	Address	City	Type
1	PEH, LLC #809	15701 FREDERICK ROAD	DERWOOD	UST
1	PEH, LLC #812	1911 ROCKVILLE PIKE	ROCKVILLE	UST
1	PEH, LLC #837	455 NORTH FREDERICK AVENUE	GAITHERSBURG	UST
1	PERFORMANCE PLUS	15563K FREDERICK RD	ROCKVILLE	Auto
1	PIKE CLEANERS	11409 WOODGLEN DR	ROCKVILLE	Drycleaner (Inactive/ Historical)
1	PLAZA 355	15551-15563 FREDERICK RD	ROCKVILLE	Auto
1	PLAZA 355	15555 - 15563 FREDERICK ROAD	ROCKVILLE	Auto
1	PLAZA CLEANERS	1607 ROCKVILLE PIKE, EAST	ROCKVILLE	Drycleaner (Inactive/ Historical)
1	PMG CO 29	19235 FREDERICK ROAD	GERMANTOWN	UST
1	PMG CO04	100 NORTH FREDERICK AVENUE	GAITHERSBURG	UST
1	ROCKMONT CHEVROLET	15301 FREDERICK ROAD	ROCKVILLE	Auto
1	ROCKVILLE MITSUBISHI	15555 D FREDERICK RD	ROCKVILLE	Auto
1	ROCKVILLE MITSUBISHI	15531 FREDERICK AVE	ROCKVILLE	Auto
1	ROCKVILLE PORSCHE AUDI	15515 FREDERICK RD	ROCKVILLE	Auto
1	ROCKVILLE SERVICE CENTER	1900 ROCKVILLE PIKE	ROCKVILLE	UST
1	ROCKVILLE SHOE HOSPITAL	609 HUNGERFORD DR	ROCKVILLE	Drycleaner (Inactive/ Historical)
1	ROMANCE CLEANERS	11500 MIDDLEBROOK ROAD	GERMANTOWN	Drycleaner (Active)
1	ROSENTHAL ACURA	621 N FREDERICK AVE	GAITHERSBURG	Auto
1	ROSENTHAL SUZUKI INC	619 N FREDERICK AVE	GAITHERSBURG	Auto
1	RUSSELL CLEANERS	845 RUSSELL STREET	GAITHERSBURG	Drycleaner (Active)
1	SCHULMAN BUICK STERLING	11407 ROCKVILLE PIKE	KENSINGTON	Auto
1	SCUDERI AUTO BODY INC	15927 FREDERICK RD	ROCKVILLE	Auto
1	SEYCAM DRY CLEANERS	16246 FREDERICK RD	GAITHERSBURG	Drycleaner (Inactive/ Historical)
1	SHANNON AUTO BODY	15563 FREDERICK RD	ROCKVILLE	Auto
1	SHEEHY FORD OF GAITHERSBURG	901 N. FREDERICK AVENUE	GAITHERSBURG	Auto
1	SOUTH FREDERICK AVENUE BP	16210 S. FREDERICK AVENUE	GAITHERSBURG	UST
1	SUNOCO #0004-3919	790 HUNGERFORD DRIVE	ROCKVILLE	UST
1	SWIFT CLEANERS OF BETHESDA	7315 WIS AVE	BETHESDA	Drycleaner (Inactive/ Historical)
1	TOLSON AUTOMOTIVE INC	PLAZA 355-15557 A-B FREDERICK	ROCKVILLE	Auto
1	TOWN & COUNTRY DRY CLEANERS	4715 COMMERCE LANE	BETHESDA	Drycleaner (Inactive/ Historical)
1	TOYOTA COLLISION CENTER	15940 INDIANOLA DRIVE	ROCKVILLE	Auto
1	VILLAGE CLEANERS	18222 CONTOUR RD	GAITHERSBURG	Drycleaner (Inactive/ Historical)
1	VOB BMW DEALER	1396 ROCKVILLE PIKE	ROCKVILLE	Auto
1	WALNUT HILL CLEANERS	16536 S WESTLAND DR	GAITHERSBURG	Drycleaner (Inactive/ Historical)
1	WINTERGREEN CLRS & SHOE REPR	891 ROCKVILLE PIKE	ROCKVILLE	Drycleaner (Inactive/ Historical)



Rank	Name	Address	City	Type
1	ZIPS DRY CLEANERS	901 ROCKVILLE PIKE	ROCKVILLE	Drycleaner (Active)
2	106 NORTH FREDERICK AVENUE	106 NORTH FREDERICK AVENUE	GAITHERSBURG	VCP, LRP
2	19609 FREDERICK ROAD	19609 FREDERICK ROAD	GERMANTOWN	LRP
2	4809 AUBURN AVENUE	4809 AUBURN AVENUE	BETHESDA	LRP, VCP
2	7272 WISCONSIN AVENUE	7272 WISCONSIN AVENUE	BETHESDA	LRP
2	7351-7355 WISCONSIN AVENUE	7351-7355 WISCONSIN AVENUE	BETHESDA	LRP, VCP, INST CONTROLS
2	8008 WISCONSIN AVENUE	8004-8006 WISCONSIN AVENUE AND 8013 WOODMONT AVENUE	BETHESDA	LRP, VCP
2	8300 WISCONSIN AVENUE	8300 WISCONSIN AVENUE	BETHESDA	LRP, VCP, INST CONTROLS
2	A I PETRO TESTING & INSPECTION LLC	19261 WHEATFIELD TERRACE	GAITHERSBURG	Open OCP Case
2	BAINBRIDGE BETHESDA METRO SITE	7340 WISCONSIN AVENUE	BETHESDA	LRP, VCP
2	BETHESDA COMMERCE	7535 OLD GEORGETOWN ROAD	BETHESDA	LRP, VCP, INST CONTROLS
2	BPS (CONSOLIDATED REDEVELOPMENT SITE)	7351-7359 WISCONSIN AVENUE AND 4630 MONTGOMERY AVENUE	BETHESDA	LRP, VCP, INST CONTROLS
2	BRIGHTVIEW ROCKVILLE TOWN CENTER	285 NORTH WASHINGTON STREET	ROCKVILLE	LRP, VCP, INST CONTROLS
2	CASEY HEALTH INSTITUTE	800 S FREDERICK AVE	GAITHERSBURG	Open OCP Case
2	CITYOF ROCKVILLE WATER TOWER	200 TALBOTT ST	ROCKVILLE	LRP
2	DERWOOD RECYCLING CENTER	16101 FREDERICK RD	DERWOOD	SWF/LF
2	EXXON #27437	7340 WISCONSIN AVE	BETHESDA	LRP
2	EXXON R/S #27571			Open OCP Case
2	FORMER BELL CLEANERS AND BELL LAUNDRY	7106 WOODMONT AVENUE AND 7008-7034 WISCONSIN AVENUE	BETHESDA	LRP, VCP, INST CONTROLS
2	FORMER MARYLAND WOOD PRESERVING	235 DERWOOD CIRCLE	ROCKVILLE	LRP, VCP, INST CONTROLS
2	GAITHERSBURG SQUARE SHOPPING CENTER	460-582 NORTH FREDERICK AVENUE	GAITHERSBURG	LRP, VCP, INST CONTROLS
2	GAITHERSBURG Y SITE	200 OLDE TOWNE AVENUE	GAITHERSBURG	LRP, VCP, INST CONTROLS
2	GATEWAY TOWER	401 NORTH WASHINGTON STREET	ROCKVILLE	LRP, VCP, INST CONTROLS
2	HERSHEYS CLEANERS INC	116 N FREDERICK AVE	GAITHERSBURG	Drycleaner (Inactive/ Historical)
2	HOLLADAY PROPERTY	1900 CHAPMAN AVE	ROCKVILLE	LRP, VCP, INST CONTROLS
2	JEFFERSON AT CONGRESSIONAL VILLAGE	180 HALPINE ROAD	ROCKVILLE	LRP, VCP, INST CONTROLS
2	MONTGOMERY COUNTY MATERIAL RECOVERY FACILITY	16105 FREDERICK AVENUE	DERWOOD	MD SWCY
2	MONTROSE CROSSING CENTER	12015-12099 ROCKVILLE PIKE	ROCKVILLE	LRP, VCP

Rank	Name	Address	City	Type
2	NATIONAL INSTITUTES OF HEALTH-9000 ROCKVILLE PIKE	9000 ROCKVILLE PIKE	BETHESDA	LRP, SEMS, MD SHWS, CORRACTS, RCRA-TSDF
2	NATIONAL TIRE AND BATTERY	15609 FREDERICK RD	ROCKVILLE	Open OCP Case
2	NAVAL MEDICAL COMMAND	8901 WISCONSIN AVE	BETHESDA	MD SHWS, SEMS, LRP
2	NAVAL SUPPORT ACTIVITY BETHESDA	8901 WISCONSIN AVE	BETHESDA	CORRACTS, RCRA-TSDF
2	NIEMEYER-TRAIL LLC	702 ROCKVILLE PIKE	ROCKVILLE	Open OCP Case
2	NU-LOOK 1 HR. CLEANERS FREDERICK RD			VCP, INST CONTROLS
2	PARKING LOTS 31 AND 31-A	INTERSECTION OF BETHESDA AVENUE AND WOODMONT AVENUE	BETHESDA	LRP, VCP, INST CONTROLS
2	ROCKVILLE METRO PLAZA	151 ROCKVILLE PIKE	ROCKVILLE	LRP, VCP, INST CONTROLS
2	ROCKVILLE TOWN SQUARE I	225 NORTH WASHINGTON STREET	ROCKVILLE	LRP, VCP, INST CONTROLS
2	ROCKVILLE TOWN SQUARE II	200 EAST MIDDLE LANE	ROCKVILLE	LRP, VCP, INST CONTROLS
2	SHOPPES/CENTRE POINTE CO	822 ROCKVILLE PIKE	ROCKVILLE	LRP, VCP, INST CONTROLS
2	TALBOTT CENTER	1043 ROCKVILLE PIKE	ROCKVILLE	LRP, VCP, INST CONTROLS
2	WHITE FLINT CROSSING	11410 ROCKVILLE PIKE	ROCKVILLE	LRP
3	10101 GROSVENOR PARK CONDO	10101 GROSVENOR PLACE	ROCKVILLE	UST
3	ALDON MANAGEMENT	4857 BATTERY LANE	BETHESDA	UST
3	ALDON MANAGEMENT	4890 BATTERY LANE	BETHESDA	UST
3	ALDON MANAGEMENT	4900 BATTERY LANE	BETHESDA	UST
3	ALDON PROPERTIES	4858 BATTERY LANE	BETHESDA	UST
3	AMERICANA CENTRE CONDOMINIUM, INC.	118 MONROE STREET	ROCKVILLE	UST
3	ASBURY METHODIST VILLAGE (I.L. BUILDING)	419 RUSSELL AVENUE	GAITHERSBURG	UST
3	DIAMOND BUILDING	415 RUSSELL AVENUE	GAITHERSBURG	UST
3	EDWARD-FISHER BUILDING	403 RUSSELL AVENUE	GAITHERSBURG	UST
3	FAIRMONT PLAZA	4801 FAIRMONT AVE	BETHESDA	UST
3	GAITHERSBURG SOC (GLC-07742)	5 NORTH FREDERICK AVENUE	GAITHERSBURG	UST
3	GROSVENOR PARK CONDOMINIUM	10201 GROSVENOR PLACE	NORTH BETHESDA	UST
3	GROSVENOR PARK III CONDOMINIUMS	10401 GROSVENOR PLACE	NORTH BETHESDA	UST
3	IBM CORPORATION	800 N FREDERICK AVE	GAITHERSBURG	AST (Oil Ops Permit)
3	JIFFY LUBE #159	116 N FREDERICK AVE	GAITHERSBURG	AST (Oil Ops Permit)
3	JIFFY LUBE #972	15121 FREDERICK RD	ROCKVILLE	AST (Oil Ops Permit), Auto
3	KAISER PERMANENTE	655 WATKINS MILL RD	GAITHERSBURG	UST



Rank	Name	Address	City	Type
3	MONTGOMERY COUNTY SOLID WASTE TRANSFER STATION	16101 FREDERICK RD	DERWOOD	AST (Oil Ops Permit)
3	MUND BUILDING - AMV	407 RUSSELL AVENUE	GAITHERSBURG	UST
3	NATIONAL INSTITUTES OF HEALTH	9000 ROCKVILLE PIKE	BETHESDA	AST (Oil Ops Permit)
3	NAVAL SUPPORT ACTIVITY BETHESDA	8901 WISCONSIN AVE	BETHESDA	AST (Oil Ops Permit)
3	PROMENADE CONDOMINIUM	5225 POOKS HILL RD	BETHESDA	UST
3	THE FORUM CONDOMINIUM	11801 ROCKVILLE PIKE	ROCKVILLE	UST
3	TROTT BUILDING	401 RUSSELL AVE.	GAITHERSBURG	UST
3	US N.R.C.	11545 ROCKVILLE PIKE	ROCKVILLE	UST

**Table 4-3: Potential Hazardous Materials Sites Alternative A  
(In addition to common sites from Table 4-2)**

Rank	Name	Address	City	Type
1	7-ELEVEN #34140	21040 HENDERSON CORNER ROAD	GERMANTOWN	UST
1	CLARKSBURG 7-11	12101 SNOWDEN FARM PARKWAY	CLARKSBURG	UST
1	CLARKSBURG GROCERIES BEER & WINE	23329 FREDERICK ROAD	CLARKSBURG	UST
1	FOX CHAPEL CLEANERS	23329 BREWERS TAVERN WAY	CLARKSBURG	Drycleaner (Inactive/Historical)
1	HOLY CROSS GERMANTOWN HOSPITAL	19801 OBSERVATION DR	GERMANTOWN	AST (Oil Ops Permit)
1	MILESTONE LIBERTY	21101 FREDERICK ROAD	GERMANTOWN	UST
1	MY CLEANERS 2	23235 STRINGTOWN RD	CLARKSBURG	Drycleaner (Inactive/Historical)
1	WAL-MART STORE #02357	20910 FREDERICK RD	GERMANTOWN	AST (Oil Ops Permit)

**Table 4-4: Potential Hazardous Materials Sites Alternative B  
(in addition to common sites from Table 4-2)**

Rank	Name	Address	City	Type
1	CLARKSBURG GROCERIES BEER & WINE	23329 FREDERICK ROAD	CLARKSBURG	UST
1	CLARKSBURG TRANSPORTATION & MAINTENANCE DEPOT	13100 SHAWNEE LANE	CLARKSBURG	UST
1	HOLY CROSS GERMANTOWN HOSPITAL	19801 OBSERVATION DR	GERMANTOWN	AST (Oil Ops Permit)
1	MOYER & SONS, INC.	13050 SHAWNEE LANE	CLARKSBURG	UST

Rank	Name	Address	City	Type
1	WAL-MART STORE #02357	20910 FREDERICK RD	GERMANTOWN	AST (Oil Ops Permit)

**Table 4-5: Potential Hazardous Materials Sites Alternative C  
(in addition to common sites from Table 4-2)**

Rank	Name	Address	City	Type
1	7-ELEVEN #34140	21040 HENDERSON CORNER ROAD	GERMANTOWN	UST
1	CLARKSBURG GROCERIES BEER & WINE	23329 FREDERICK ROAD	CLARKSBURG	UST
1	EAST GERMANTOWN FIRE STATION	20633 BOLAND FARM ROAD	GERMANTOWN	UST
1	FREESTATE GERMANTOWN MD # 809	20650 FREDERICK ROAD	GERMANTOWN	UST
1	MILESTONE LIBERTY	21101 FREDERICK ROAD	GERMANTOWN	UST
1	MY CLEANERS 2	23235 STRINGTOWN RD	CLARKSBURG	Drycleaner (Inactive/Historical)
1	PEP BOYS 566	FREDERICK RD & MILES STONE CTR	GERMANTOWN	Auto
1	PMG CO 01	20510 FREDERICK ROAD	GERMANTOWN	UST
1	SHELL SERVICE STATION	21000 FREDERICK ROAD	GERMANTOWN	UST

## 5 Next Steps

Evaluation of the BRT alignment options will consider the type and proximity of potential hazardous material sites in developing a Recommended Alternative and conceptual design. This evaluation will identify those locations which may pose a concern for BRT development and for which additional evaluation would be recommended in future project development activities.

## Appendices

DRAFT



**APPENDIX A: Hazardous Material Databases Reviewed (via EDR Report)**

Acronym	Description
<b>Federal Databases</b>	
NPL LIENS	Federal Superfund Liens
CORRACTS	Corrective Action Report
PROPOSED NPL	Proposed National Priority List Sites
FTTS	FIFRA/ TSCA Tracking System - FIFRA (Federal Insecticide, Fungicide, & Rodenticide Act)/TSCA (Toxic Substances Control Act)
DOD	Department of Defense Sites
RMP	Risk Management Plans
BROWNFIELDS	A Listing of Brownfields Sites
PADS	PCB Activity Database System
SEMS-ARCHIVE	Superfund Enterprise Management System Archive
INDIAN RESERVE	Indian Reservations
FUDS	Formerly Used Defense Sites
UMTRA	Uranium Mill Tailings Sites
ODI	Open Dump Inventory
SEMS	Superfund Enterprise Management System
ENG CONTROLS	Engineering Controls Sites List
INST CONTROL	Sites with Institutional Controls
EDR MGP	EDR Proprietary Manufactured Gas Plants
EDR DRY CLEANERS	EDR Exclusive Historical Cleaners
EDR GAS STATIONS	EDR Exclusive Historical Auto Stations
HMIRS	Hazardous Materials Information Reporting System
ICIS	Integrated Compliance Information System
CONSENT	Superfund (CERCLA) Consent Decrees
INDIAN LUST R1	Leaking Underground Storage Tanks on Indian Land
INDIAN UST R1	Underground Storage Tanks on Indian Land
LUCIS	Land Use Control Information System
RADINFO	Radiation Information Database
ERNS	Emergency Response Notification System
DOT OPS	Incident and Accident Data
CDL	Clandestine Drug Labs
HIST FTTS	FIFRA/TSCA Tracking System Administrative Case Listing
LIENS 2	CERCLA Lien Information
DEBRIS REGION 9	Torres Martinez Reservation Illegal Dump Site Locations
INDIAN ODI	Report on the Status of Open Dumps on Indian Lands
RCRA-CESQG	RCRA - Conditionally Exempt Small Quantity Generators
RCRA-NLR	RCRA - Non Generators / No Longer Regulated
INDIAN VCP R1	Voluntary Cleanup Priority Listing
SCRD DRYCLEANERS	State Coalition for Remediation of Drycleaners Listing
HIST CDL	National Clandestine Laboratory Register
PCB TRANSFORMER	PCB Transformer Registration Database

Acronym	Description
COAL ASH EPA	Coal Combustion Residues Surface Impoundments List
FEDERAL FACILITY	Federal Facility Site Information listing
FEMA UST	Underground Storage Tank Listing
COAL ASH DOE	Steam-Electric Plant Operation Data
RCRA-SQG	RCRA - Small Quantity Generators
LEAD SMELTER 1	Lead Smelter Sites
FINANCIAL ASSURANCE	Financial Assurance Information
ECHO	Enforcement & Compliance History Information
MINES	Mines Master Index File
EPA WATCH LIST	EPA WATCH LIST
2020 CORRECTIVE ACTION	2020 Corrective Action Program List
UXO	Unexploded Ordnance Sites
FUELS PROGRAM	EPA Fuels Program Registered Listing
FINDS	Facility Index System/Facility Registry System
FUSRAP	Formerly Utilized Sites Remedial Action Program
IHS OPEN DUMPS	Open Dumps on Indian Land
ABANDONED MINES	Abandoned Mines
DOCKET HWC	Hazardous Waste Compliance Docket Listing
DELISTED NPL	National Priority List Deletions
NPL	National Priority List
SSTS	Section 7 Tracking Systems
RCRA-LQG	RCRA - Large Quantity Generators
RODS	Records Of Decision
MLTS	Material Licensing Tracking System
TRIS	Toxic Chemical Release Inventory System
RCRA-TSDF	RCRA - Treatment, Storage and Disposal
RAATS	RCRA Administrative Action Tracking System
TSCA	Toxic Substances Control Act
ENVSr_COLLEGE	Integrated Postsecondary Education Data
ENVSr_MEDCTR	Centers for Medicare and Medicaid Services Listing
ENVSr_NURHOM	Directory of Nursing Homes
ENVSr_PRVSCH	Private Schools of the United States
ENVSr_PUBSCH	Public Schools
PRISON	Prison Facilities Listing
PWS	Public Water System Data
USGS WATER WELLS	National Water Information System (NWIS)
WETLANDS	National Wetlands Inventory
FEDLAND	Federal and Indian Lands
AIRS (AFS)	Aerometric Information Retrieval System Facility Subsystem (AFS)
PRP	Potentially Responsible Parties
<b>Maryland Databases</b>	
HIST UST	Historical UST Registered Database

Acronym	Description
BROWNFIELDS	Eligible Brownfields Properties
HIST LUST	Recovery Sites
DRYCLEANERS	Registered Drycleaning Facilities
SWRCY	Recycling Directory
VCP	Voluntary Cleanup Program Applicants/Participants
AST	Permitted Aboveground Storage Tanks
INST CONTROL	Voluntary Cleanup Program Applicants/Participants
AIRS	Permit and Facility Information Listing
ENG CONTROLS	Engineering Controls Site listing
UIC	Underground Injection Wells Database
NPDES	Wastewater Permit Listing
LEAD	Lead Inspection Database
FINANCIAL ASSURANCE 1	Financial Assurance Information Listing
ASBESTOS	Asbestos Notification Listing
COAL ASH	Coal Ash Disposal Site Listing
LRP	Land Restoration Program
HWS	Notice of Potential Hazardous Waste Sites
SPILLS90	SPILLS90 data from FirstSearch
RGA LUST	Recovered Government Archive Leaking Underground Storage Tank
RGA HWS	Recovered Government Archive State Hazardous Waste Facilities List
RGA LF	Recovered Government Archive Solid Waste Facilities List
LF	Permitted Solid Waste Disposal Facilities
MD OCPCASES	Oil Control Program Cases
UST	Registered Underground Storage Tank List
ENVSR_DAYCTR	Child Care Providers
OIL_GAS	Oil & Gas Wells
WELLS	State Well Sites



APPENDIX B: Detailed Hazardous Material Locations/Issues

Potential Hazardous Materials Sites Common to All Alternatives (Southern Limit to Middlebrook Road)									
	RANK	NAME	ADDRESS	CITY	STATE	ZIP	COMMENTS	TYPE	DISTANCE (FT)
	1	ROMANCE CLEANERS	11500 MIDDLEBROOK ROAD	GERMANTOWN	MD	20876	MD Drycleaners Facility 021-1889 SIC 7216 Status: Active Historical Cleaners 1991 thru 2014 Type Drycleaning Plants, Except Rugs, NEC.	Drycleaner (Active)	131.8
	1	FOX CHAPEL CLEANERS AND YEAL INC	19729 FREDERICK AVE	GERMANTOWN	MD	20874	MD Drycleaners Facility 031-1786 SIC 7216 Status Inactive RCRA-SQG (including spent halogenated solvents) Historical drycleaner 1988 thru 2008 Drycleaning Plants, Except Rugs (Fox Chapel Cleaners and Yeal).	Drycleaner (Inactive/ Historical)	0.0
	1	MIDDLEBROOK SUNOCO	11606 MIDDLEBROOK ROAD	GERMANTOWN	MD	20876	OCP Facility 3545. USTs active: Three 10,000 gal Gasohol and one 10,000 diesel.	UST	639.6
	1	7-ELEVEN #27591	19700 FREDERICK ROAD	GERMANTOWN	MD	20874	OCP Facility 13033. USTs Active: 10,000 gal Gasohol and 15,000 Gasohol	UST	0.0
	2	NU-LOOK 1 HR. CLEANERS FREDERICK RD	19609 FREDERICK ROAD	GERMANTOWN	MD	20876	LRP SITE - GW chlorinated and petroleum; Soil chlorinated and petroleum, BMI Number MD1051 FY Open 2001 FY_Closed 2003  RCRA-CESQG form 5/28/1986 MD Drycleaners 031-1102 SIC 7216 Status Inactive. Historical Cleaner. Type Drycleaning Plants, Except Rugs 1974 thru 2001 (D C Equipment, NU Look One Hr Clrs Gaithersburg, Nu Look 1 HR CLNRS, and New Cleaners). <u>VCP</u> : Application accepted 1/31/2003 Date Issued 1/31/2003. Type: No Further Requirements Determination (NFRD). <u>Institutional Controls</u> - Issue Date 1/31/2003 (3 of them, all same) Monitoring wells must be maintained onsite as long as dry cleaning operations occur, future owner may request abandonment. Land Use Restrictions (commercial, industrial) GW Use Restriction-True, Excavation Notification Restriction-True; Paving Maintenance Required-True; Slab Maintenance Required-True; Excavated Material Disposal Requirement-True.	LRP  VCP, INST CONTROLS	297.3
	1	COTTMAN TRANSMISSION CENTER	19600 FREDERICK RD	GERMANTOWN	MD	20876	Historical Auto. Type: Automotive Transmission Repair Shops 1999-2014 and then Meineke General Automotive Repair Shops (2014)	Auto	231.5
	1	MONTROSE JEEP EAGLE/ MONTROSE MOTORS	19560 FREDERICK ROAD	GERMANTOWN	MD	20876	Auto Dealer assumed to have a service department.	Auto	251.8
	2	A I PETRO TESTING & INSPECTION LLC	19261 WHEATFIELD TERRACE	GAITHERSBURG	MD	20879	OCP Case 16-0026MO; Status OPEN/C-14 Opened 07/20/2015. Date Closed not reported. Release and Cleanup not reported. Facility not reported.	Open OCP Case	1588.0

Potential Hazardous Materials Sites Common to All Alternatives (Southern Limit to Middlebrook Road)									
	1	PMG CO 29	19235 FREDERICK ROAD	GERMANTOWN	MD	20876	OCP Facility 4946. USTs Active: three 10,000 gal Gasohol, one 10,000 diesel, and one 6,000 E85	UST	204.3
	1	COACH CLEANERS	18749 N FREDERICK AVE	GAITHERSBURG	MD	20879	MD Drycleaners - Facility ID 031-1728 SIC 7216 Status: Inactive Historic Cleaner Type: Drycleaning Plants, Except Rugs 1994 thru 2014	Drycleaner (Inactive/Historical)	233.9
	1	7-ELEVEN #32879	3 PROFESSIONAL DRIVE	GAITHERSBURG	MD	20879	OCP Facility 11265. USTs Active: one 15,000 gal Gasohol and one 10,000 Gasohol	UST	241.8
	1	HALOTA ENTERPRISES INC	943 N FREDERICK AVE	GAITHERSBURG	MD	20879	Historical Auto Type Automotive Transmission Repair Shops 1992 thru 2008. Then STK Automotive General Automotive Repair Shops 2010 thru 2013.	Auto	0.0
	1	KING LINCOLN MERCURY INC	953 NORTH FREDERICK AVE	GAITHERSBURG	MD	20879	Auto Dealer assumed to have a service department.	Auto	0.0
	1	SHEEHY FORD OF GAITHERSBURG	901 N. FREDERICK AVENUE	GAITHERSBURG	MD	20879	Auto Dealer assumed to have a service department.	Auto	255.7
	1	LAKE FOREST OLDSMOBILE INC.	905 N. FREDERICK AVE.	GAITHERSBURG	MD	20879	Auto Dealer assumed to have a service department.	Auto	0.0
	3	KAISER PERMANENTE	655 WATKINS MILL RD	GAITHERSBURG	MD	20879	OCP Facility 20181. USTs Active: one 12,000 gal diesel.	UST	1396.0
	1	MERCHANTS TIRE & AUTO NO 6028	861 RUSSELL AVE	GAITHERSBURG	MD	20879	RCRA-CESQG form 12/29/99. Tires, batteries etc. Auto shop.	Auto	561.7
	1	RUSSELL CLEANERS	845 RUSSELL STREET	GAITHERSBURG	MD	20879	MD Drycleaners. Facility 031-2199 ISC 7216 Status: Active	Drycleaner (Active)	841.2
	3	IBM CORPORATION	800 N FREDERICK AVE	GAITHERSBURG	MD	20879	MD AST Oil Operations Permit ASTs four or eight 200 gal diesel ASTs, two 12,000 diesel, three 5,000 diesel, and one 1,560 diesel.	AST (Oil Ops Permit)	1052.6
	1	ROSENTHAL SUZUKI INC	619 N FREDERICK AVE	GAITHERSBURG	MD	20879	Auto dealer/assumed service department. On parcel adjacent to Corridor 1. Closest distance may be about 250 feet.	Auto	1066.6
	1	ROSENTHAL ACURA	621 N FREDERICK AVE	GAITHERSBURG	MD	20879	Auto dealer assumed to have a service department. On parcel adjacent to Corridor 1. Closest distance may be about 500 feet.	Auto	1022.1
	1	BRITE CLEANERS AND RIAN CLEANERS	9617 LOST KNIFE ROAD	GAITHERSBURG	MD	20877	MD Drycleaners Facility 031-1911 SIC 7216 Status: Inactive. Historical Cleaners 1986 thru 2008 Type: Garment Pressing and Cleaners' Agents.	Drycleaner (Inactive/Historical)	0.0
	1	VILLAGE CLEANERS	18222 CONTOUR RD	GAITHERSBURG	MD	20877	MD Drycleaners Facility 031-1923 SIC 7216 Status: Inactive. RCRA-SQG form 1/22/88 including halogenated solvents.	Drycleaner (Inactive/Historical)	849.2
	1	MONTGOMERY WARDS AUTO CENTER	600 FREDERICK RD # H	GAITHERSBURG	MD		Historical UST 550 gal used oil removed. Former Montgomery Wards Auto Center. Sheehy Ford truck service center has occupied part of building at least some of the time since then.	Auto	338.7
	3	ASBURY METHODIST VILLAGE (I.L. BUILDING)	419 RUSSELL AVENUE	GAITHERSBURG	MD	20877	(may be within 300 feet of corridor) OCP Facility 11096. USTs Active one 15,000 gal heating oil and one 550 diesel. Campus map shows 419 Russell is Wallace Apts. located adjacent to corridor.	UST	673.9
	3	DIAMOND BUILDING	415 RUSSELL AVENUE	GAITHERSBURG	MD	20877	OCP Facility 2794. USTs Active: one 15,000 gal heating oil and one 550 diesel. Located in a large parcel adjacent to corridor.	UST	723.8
	3	MUND BUILDING - AMV	407 RUSSELL AVENUE	GAITHERSBURG	MD	20877	OCP Facility 2532 (Mund Building). USTs Active: one 550 gal diesel.	UST	800.4

Potential Hazardous Materials Sites Common to All Alternatives (Southern Limit to Middlebrook Road)									
	3	EDWARD-FISHER BUILDING	403 RUSSELL AVENUE	GAITHERSBURG	MD	20877	OCP Facility 2516 (Edwards-Fisher Bldg). Active USTs one 550 gal diesel.	UST	839.6
	3	TROTT BUILDING	401 RUSSELL AVE.	GAITHERSBURG	MD	20877	OCP Facility 2446. USTs Active: one 14,000 gal diesel.	UST	902.5
	1	EXXON #27571 / #0044-3606	448 NORTH FREDERICK AVENUE	GAITHERSBURG	MD	20877	OCP Facility 5193. USTs Active: two 10,000 gal Gasohol and one 10,000 diesel.	UST	64.3
	2	EXXON R/S #27571					Open OCP Case 18-0188MO OPEN/Well/GW Contamination - Motor/Lube Oil Opened 10/12/2017. Release Yes. Cleanup Not reported.	Open OCP Case	
	1	PEH, LLC #837	455 NORTH FREDERICK AVENUE	GAITHERSBURG	MD	20877	OCP Facility 4880. USTs Active: three 10,000 gal Gasohol.	UST	110.6
	2	GAITHERSBURG SQUARE SHOPPING CENTER	460-582 NORTH FREDERICK AVENUE	GAITHERSBURG	MD	20877	LRP (MDE MAP): GW Use Restr - Yes; Det Type NFRD; MD1380; GW Chlorinated - Yes; GW Petroleum - Yes; Soil Chlorinated - Yes; Soil Petroleum - Yes; FY Open 20002 FY_Closed 2003 VCP Application Accepted and Issued on 10/07/2002. VCP - True. Type NFRD (No Further Requirements Determination). GW chlorinated Yes, GW Petroleum Yes, Soil chlorinated Yes Institutional Controls. Recorded at 22073, p. 794-801. Issued 10/07/2002. Commercial Land Use Restricted (True), Industrial Land Use Restricted (True), Groundwater Use Restriction (True)	LRP, VCP, INST CONTROLS	500.9
	1	EXXON #28808	408 N. FREDERICK AVENUE	GAITHERSBURG	MD	20877	OCP Facility 6431 (28808 USM Petro, LLC location; Southside Oil c/o Sunoco). USTs Active: two 8,000 gal Gasohol, one 12,000 Gasohol, and one 10,000 diesel.	UST	0.0
	1	GAITHERSBURG CLEANERS	211 N FREDERICK AVE STE B	GAITHERSBURG	MD	20877	Historical Cleaner 1991 thru 2014 (Gaithersburg Dry Cleaners or Gaithersburg Cleaners) Type: primarily Dry Cleaning Plants, Except Rugs; in 1994 & 1995 Garment Pressing and Cleaners' Agents.	Drycleaner (Inactive/ Historical)	0.0
	1	MIDAS	204 N. FREDERICK AVENUE	GAITHERSBURG	MD	20877	Auto repair shop.	Auto	175.3
	3	JIFFY LUBE #159	116 N FREDERICK AVE	GAITHERSBURG	MD	208772411	AST Facility 2013-OPT-6186 Oil Operations Permit two 750 gal motor oil, one 275 motor oil,	AST (Oil Ops Permit)	169.5
	1	DRYCLEAN WAREHOUSE	112 FREDERICK AVENUE, NORTH	GAITHERSBURG	MD	20877	MD Drycleaners Facility ID 031-2062 SIC 7216 Status: Active	Drycleaner (Active)	170.6
	2	106 NORTH FREDERICK AVENUE	106 NORTH FREDERICK AVENUE	GAITHERSBURG	MD	20877	VCP application 10/25/2017. Hershey's Cleaners. LRP Assessment Ongoing - Yes; GW No; Soil chlorinated - Yes; FY Open 2018 FY_Closed not reported.	VCP, LRP	78.5
	1	HERSHEYS CLEANERS INC					MD Drycleaners. Facility 031-0864 SIC 7216 Status Active	Drycleaner (Active)	
	2	HERSHEYS CLEANERS INC	116 N FREDERICK AVE	GAITHERSBURG	MD	20760	Historical Cleaners: 1973 thru 2014 Drycleaning Plants, Except Rugs	Drycleaner (Inactive/ Historical)	169.5
	1	PMG C004	100 NORTH FREDERICK AVENUE	GAITHERSBURG	MD	20877	OCP Facility 3678. USTs Active: one 12,000 gal Gasohol, one 10,000 E85, one 10,000 Gasohol, and one 10,000 diesel.	UST	133.7
	3	GAITHERSBURG SOC (GLC-07742)	5 NORTH FREDERICK AVENUE	GAITHERSBURG	MD	20877	OCP Facility 8536 (Verizon Communications - Gaithersburg Wire Center). UST Active: one 10,000 diesel.	UST	469.0



Potential Hazardous Materials Sites Common to All Alternatives (Southern Limit to Middlebrook Road)									
	1	MATHIAS SERVICENTER	22 W DIAMOND AV	GAITHERSBURG	MD	20877	Corridor Elevated in vicinity. Auto Shop would otherwise be adjacent. Historical Auto 1987-2014 General Automotive Repair Shops and/or Automotive Repair Shops, NEC	Auto	231.9
	2	GAITHERSBURG Y SITE	200 OLDE TOWNE AVENUE	GAITHERSBURG	MD	20877	<u>LRP</u> : Alias: Wye Site, CSX Property; William M. Wetmore, Inc., Electrical Contractors; Lashof Violins; Tony & Son Air Conditioning & Heating. VCP yes. Soil petroleum yes. <u>VCP</u> : Type: Certificate of Completion (COC). Application accepted 6/12/2012 Date Issued 3/24/2017. <u>Institutional Controls</u> : Issue Date 3/24/2017. Covenant-Yes; Land Use Restricted (Residential, Commercial, Industrial), GW use restriction-Yes; Excavation Notification Restriction-Yes; Paving maintenance required-Yes; excavated material disposal requirement-Yes. VCP application submitted 9/20/2011, accepted on 6/12/2012 and Date issued 3/24/2017.	LRP, VCP, INST CONTROLS	610.4
	1	DRYCLEANER, THE - WALNUT STREET	615 FREDERICK ROAD	GAITHERSBURG	MD	20877	MD Drycleaners Facility ID 031-1735 Facility Status Inactive. SIC Code 7216 Drycleaning Plants, except Rug Cleaning	Drycleaner (Inactive/ Historical)	91.8
	1	GAITHERSBURG LIBERTY LLC (WALNUT HILL LIBERTY)	623 SOUTH FREDERICK AVENUE	GAITHERSBURG	MD	20877	OCP Facility 9865. USTs Active: one 12,000 gal Gasohol and one 10,000 Gasohol.	UST	127.0
	1	WALNUT HILL CLEANERS	16536 S WESTLAND DR	GAITHERSBURG	MD	20877	MD Drycleaners Facility 031-1024 SIC 7316 Status Inactive RCRA-CESQG form 9/26/1985.	Drycleaner (Inactive/ Historical)	780.5
	1	EXXON #27470/0565-8620	16425 S. FREDERICK AVE.	GAITHERSBURG	MD	20877	OCP Facility 5416. USTs Active: three 12,000 gal Gasohol.	UST	91.1
	2	CASEY HEALTH INSTITUTE	800 S FREDERICK AVE	GAITHERSBURG	MD	20877	OCP Case 18-0029MO OPEN/Transfer Accident - Commercial Heating Oil Opened 7/18/2017, Release Yes Cleanup Not Reported. Facility 20801.	Open OCP Case	235.7
	1	SOUTH FREDERICK AVENUE BP	16210 S. FREDERICK AVENUE	GAITHERSBURG	MD	20877	OCP Facility 11053. Active USTs: one 10,000 gal Gasohol, one 8,000 diesel, two 6,000 Gasohol, and one 4,000 Gasohol.	UST	148.8
	1	SEYCAM DRY CLEANERS	16246 FREDERICK RD	GAITHERSBURG	MD	20877	Historical Cleaner 2002 Seycam Dry Cleaners Type: Drycleaning Plants, Except Rugs, RCRA-SQG form 4/19/95 including halogenated solvents.	Drycleaner (Inactive/ Historical)	0.0
	1	KING PONTIAC	16200 FREDERICK RD	GAITHERSBURG	MD	20877	Auto Dealer assumed to have a service department.	Auto	94.5
	2	MONTGOMERY COUNTY MATERIAL RECOVERY FACILITY	16105 FREDERICK AVENUE	DERWOOD	MD	20855	Material Recovery Facility	MD SWCY	0.0
	3	MONTGOMERY COUNTY SOLID WASTE TRANSFER STATION	16101 FREDERICK RD	DERWOOD	MD	20855	OCP Oil Operations Permit. Numerous ASTs	AST (Oil Ops Permit)	0.0
	2	DERWOOD RECYCLING CENTER	16101 FREDERICK RD	DERWOOD	MD	20855	MD SWF/LF Processing Facility and Transfer Station. Several Closed OCP cases with release and cleanup.	SWF/LF	0.0

Potential Hazardous Materials Sites Common to All Alternatives (Southern Limit to Middlebrook Road)									
	1	SCUDERI AUTO BODY INC	15927 FREDERICK RD	ROCKVILLE	MD	20855	Auto repair shop.	Auto	76.3
	1	7-ELEVEN, INC. #23693	15821 FREDERICK ROAD	DERWOOD	MD	20855	OCP Facility 2636. USTs Active: one 20,000 gal Gasohol and one 2 compartment UST (8, 000 Gasohol and 12,000 diesel).	UST	93.4
	1	\$1.75 DRYCLEAN TOWN	15813 FREDERICK ROAD	ROCKVILLE	MD	20855-2219	MD Drycleaners SIC 7216 Status: Active	Drycleaner (Active)	75.8
	1	GULF STATION MD-0091	15805 FREDERICK ROAD	DERWOOD	MD	20855	OCP Facility 3624. USTs Active: two 10,000 gal Gasohol and one 10,000 diesel.	UST	121.2
	1	PEH, LLC #809	15701 FREDERICK ROAD	DERWOOD	MD	20855	OCP Facility 2758. USTs Active: two 10,000 gal Gasohol, one 12,000 Gasohol, one 8,000 diesel, one 550 used oil, and one 1,000 heating oil.	UST	123.8
	1	TOYOTA COLLISION CENTER	15940 INDIANOLA DRIVE	ROCKVILLE	MD	20855	Auto Dealer assumed to have a service department.	Auto	474.0
	1	PLAZA 355	15551-15563 FREDERICK RD	ROCKVILLE	MD	20855	15551 is Herson's Pre Owned Certified auto dealer.	Auto	91.9
	1	ROCKVILLE MITSUBISHI	15555 D FREDERICK RD	ROCKVILLE	MD	20855	Auto Dealer assumed to have a service department. RCRA-SQG form 2/13/1998	Auto	0.0
	1	TOLSON AUTOMOTIVE INC	PLAZA 355-15557 A-B FREDERICK	ROCKVILLE	MD	20855	RCRA-CESQG form	Auto	74.7
	1	PLAZA 355	15555 - 15563 FREDERICK ROAD	ROCKVILLE	MD	20855	Plaza 355 contains several auto repair shops.	Auto	162.6
	1	CONTINENTAL AUTO CRAFTSMEN	15557 E FREDERICK RD	ROCKVILLE	MD	20850	RCRA-SQG form 3/18/1993	Auto	0.0
	1	ALL TUNE & LUBE	15563 F & G FREDERICK ROAD	ROCKVILLE	MD	20855	RCRA-SQG form 12/24/1996	Auto	78.8
	1	SHANNON AUTO BODY	15563 FREDERICK RD	ROCKVILLE	MD	20850	RCRA NonGen / NR form 6/5/1985	Auto	0.0
	1	JIMS AUTO HOSPITAL INC	15563 FREDERICK RD L	ROCKVILLE	MD	20855	Historical Auto: 1979 thru 2014. Type: General Automotive Repair Shops (many different names. Most recently PJ Auto, A Plus Automotive Services, Bruce Lee Auto Services, King Farm Auto Service, Convenient Auto Service, and M Q Auto Service)	Auto	74.7
	1	PERFORMANCE PLUS	15563K FREDERICK RD	ROCKVILLE	MD	20855	RCRA-CESQG form 3/1/1993	Auto	74.7
	2	NATIONAL TIRE AND BATTERY	15609 FREDERICK RD	ROCKVILLE	MD	20885	OCP Case 16-0415MO OPEN/Unknown Source/Surface Spill 1/21/2016 Release No Cleanup not reported. Facility not reported.	Open OCP Case	141.6
	1	NTB 584	15609 FREDERICK RD	ROCKVILLE	MD	20855	RCRA-CESQG form 3/16/2005	Auto	141.6
	1	ROCKVILLE MITSUBISHI	15531 FREDERICK AVE	ROCKVILLE	MD	20855	Auto Dealer assumed to have a service department.	Auto	379.6
	1	HERSON'S, INC.	15525 FREDERICK ROAD	ROCKVILLE	MD	20855	Auto Dealer assumed to have a service department.	Auto	367.6
	1	LEXUS OF ROCKVILLE	15501 FREDERICK RD	ROCKVILLE	MD	20855	Auto Dealer assumed to have a service department.	Auto	343.0
	1	ROCKVILLE PORSCHE AUDI	15515 FREDERICK RD	ROCKVILLE	MD	20855	Auto Dealer assumed to have a service department.	Auto	0.0
	1	EURO MOTOR CARS	15401 FREDERICK RD	ROCKVILLE	MD	20855	Auto Dealer assumed to have a service department.	Auto	94.2
	1	ROCKMONT CHEVROLET	15301 FREDERICK ROAD	ROCKVILLE	MD	20855	Auto Dealer assumed to have a service department.	Auto	315.0
	1	EXXON #28448/01903277	15211 FREDERICK ROAD	ROCKVILLE	MD	20850	OCP Facility 2198. USTs Active: three 12,000 gal Gasohol.	UST	162.2

Potential Hazardous Materials Sites Common to All Alternatives (Southern Limit to Middlebrook Road)									
	1	D & D AUTO BODY	15207 FREDERICK RD STE 2D	ROCKVILLE	MD	20850	NPDES received April 2015. Issued 031-1739-6-0959 GP for 1 vehicle refinishing autobody	Auto	0.0
	2	FORMER MARYLAND WOOD PRESERVING	235 DERWOOD CIRCLE	ROCKVILLE	MD	20850	LRP: VCP - Yes, GW Metals Yes, Soil Metals Yes, BMI Number MD0144 FY Open 1999 FY Closed 2000. SEMS Archive - Non NPL - NFRAP - Site does not qualify for the NPL based on existing information. VCP: Application accepted 3/19/1999, Issued 9/3/1999, Type: No Further Requirements Determination (NFRD), MD Institutional Control: (Maryland Wood Preserving Facility) dust control is required during excavation recorded at MQR 17529, p. 0156-0164RCRA NonGen / NLR form 10/3/1980. Restricted land uses, GW restriction True, Excavation notification restriction True, Paving Maintenance Required True, Excavated material disposal requirement True. SHWS Facility ID MD-144 status Formerly Investigated Site.	LRP, VCP, INST CONTROLS	1032.2
	1	MR TIRE #42	15119 FREDERICK RD	ROCKVILLE	MD	20850	RCRA-SQG form 8/7/2000	Auto	115.6
	3	JIFFY LUBE #972	15121 FREDERICK RD	ROCKVILLE	MD	20850	Oil Operations Permit. ASTs: many ASTs for motor oil, used oil, and ATF.	AST (Oil Ops Permit), Auto	0.0
	1	SUNOCO #0004-3919	790 HUNGERFORD DRIVE	ROCKVILLE	MD	20850	OCP Facility 9269. USTs Active: three 10,000 gal Gasohol.	UST	93.8
	1	GETTY GAS STATION	801 HUNGERFORD DR	ROCKVILLE	MD	20850	OCP Facility 12310. USTs Active: two 10,000 gal Gasohol and one 2-compartment with 5,000/5,000 diesel.	UST	129.6
	1	ROCKVILLE SHOE HOSPITAL	609 HUNGERFORD DR	ROCKVILLE	MD	20850	Historical Cleaner: 2000 - 2014 Drycleaning Plants, Except Rugs, a few years NEC	Drycleaner (Inactive/ Historical)	0.0
	1	FREESTATE GAS STATION	510 HUNGERFORD DRIVE	ROCKVILLE	MD	20850	OCP Facility 4613. USTs Active: two 20,000 gal Gasohol, and one 2 compartment 12,000 diesel/ 8,000 kerosene.	UST	0.0
	2	GATEWAY TOWER	401 NORTH WASHINGTON STREET	ROCKVILLE	MD	20850	LRP: GW Chlorinated Yes, GW Petroleum Yes, BMI MD1005 Open 2003 Closed 2004. VCP: Type: No Further Requirements Determination (NFRD) Institutional Controls: Land use restrictions (commercial and industrial), GW use restriction True,	LRP, VCP, INST CONTROLS	190.3
	2	BRIGHTVIEW ROCKVILLE TOWN CENTER	285 NORTH WASHINGTON STREET	ROCKVILLE	MD	20850	LRP: alias Giant Grocery Store #105. Open 2014 Closed 2017 VCP: True Institutional Controls: land use restrictions (residential, commercial, industrial), GW use restriction True.	LRP, VCP, INST CONTROLS	461.2
	2	ROCKVILLE TOWN SQUARE I	225 NORTH WASHINGTON STREET	ROCKVILLE	MD	20850	LRP: GW chlorinated Yes, GW Petroleum Yes, and Soil Chlorinated Yes. VCP: True, Type: No Further Requirements Determination (NFRD) Institutional Controls: Issue Date 4/11/2006 land use restrictions (commercial and industrial), GW use restriction True. Commercial property with residential above first floor.	LRP, VCP, INST CONTROLS	866.7



**Potential Hazardous Materials Sites Common to All Alternatives (Southern Limit to Middlebrook Road)**

	2	ROCKVILLE TOWN SQUARE II	200 EAST MIDDLE LANE	ROCKVILLE	MD	20850	LRP: GW chlorinated Yes and GW Petroleum Yes. VCP: True, Type: No Further Requirements Determination (NFRD) Institutional Controls: Issue Date 4/5/2006 land use restrictions (commercial and industrial), GW use restriction True. Commercial property with residential above first floor. Excavation Notification Restriction True, and Excavated Material Disposal Requirement True.	LRP, VCP, INST CONTROLS	671.0
	2	ROCKVILLE METRO PLAZA	151 ROCKVILLE PIKE	ROCKVILLE	MD	20850	Alias: Midtown Shopping Center, also Rockville Metro Plaza II East and West. LRP: GW chlorinated Yes. VCP: True, Type: No Further Requirements Determination (NFRD) Institutional Controls: Issue Date 4/11/2006 land use restrictions (commercial and industrial), GW use restriction True, Excavation notification restriction True and Excavated material disposal requirement True.	LRP, VCP, INST CONTROLS	0.0
	3	AMERICANA CENTRE CONDOMINIUM, INC.	118 MONROE STREET	ROCKVILLE	MD	20850	OCP Facility 136. USTs Active: one 20,000 gal heating oil.	UST	659.4
	1	EXXON #22800	700 ROCKVILLE PIKE	ROCKVILLE	MD	20852	OCP Facility 3619. USTs Active: three 12,000 gal Gasohol.	UST	0.0
	2	NIEMEYER-TRAIL LLC	702 ROCKVILLE PIKE	ROCKVILLE	MD	20852	OCP Case 18-0367MO OPEN/Tank Closure - Commercial Heating Oil 1/30/2018 Release No Cleanup Not Reported. Facility 20810.	Open OCP Case	179.9
	1	CLEANERS MAX	804 ROCKVILLE PIKE	ROCKVILLE	MD	20852	MD Drycleaners Status Active SIC 7216 Facility ID 031-2169 Historical Cleaners 2006-2014 Cleaners Max Ltd Liability Co. Type: Drycleaning Plants, Except Rugs, NEC	Drycleaner (Active)	84.2
	1	JIFFY LUBE	806 ROCKVILLE PIKE	ROCKVILLE	MD	20850	Auto repair shop.	Auto	84.4
	2	SHOPPES/CENTRE POINTE CO	822 ROCKVILLE PIKE	ROCKVILLE	MD	20852	LRP: VCP Yes, GW chlorinated Yes, Soil Petroleum Yes BMI Number MD1301 GY Open 2004 FY_Closed 2007 VCP: Application accepted 9/30/2003 Date issued 4/2/2007. Type COC Institutional Controls: 4/2/2007 land use restricted (Commercial, industrial) GW Use Restriction True, Vapor System Require True,	LRP, VCP, INST CONTROLS	181.9
	1	MOBIL - MD 721	890 ROCKVILLE PIKE	ROCKVILLE	MD	20852	OCP Facility 9380. USTs Active: one 12,000 gal Gasohol, and one 15,000 Gasohol, one 2-compartment 10,000 diesel/6,000 kerosene.	UST	107.1
	1	WINTERGREEN CLRS & SHOE REPR	891 ROCKVILLE PIKE	ROCKVILLE	MD	20852	MD Drycleaners Facility ID 031-1804 SIC Code 7216 Facility Status Inactive Historical Cleaners 1982-2008 Type: Garment Pressing and Dry Cleaners' Agents or Laundry and Drycleaner Agents	Drycleaner (Inactive/ Historical)	0.0
	1	ZIPS DRY CLEANERS	901 ROCKVILLE PIKE	ROCKVILLE	MD	20852	MD Drycleaners Facility ID 031-1886 SIC Code 7216 Facility Status Active.	Drycleaner (Active)	0.0
	1	EDNAS CLEANERS	1061 ROCKVILLE PIKE	ROCKVILLE	MD	20852	MD Drycleaners Facility 031-0916 SIC 7216 Facility Status Inactive Historical Cleaners 1975-2014. Type Garment Pressing and Cleaners' Agents	Drycleaner (Inactive/ Historical)	76.2

Potential Hazardous Materials Sites Common to All Alternatives (Southern Limit to Middlebrook Road)									
	2	TALBOTT CENTER	1043 ROCKVILLE PIKE	ROCKVILLE	MD	20852	LRP: GW Chlorinated Yes BMI Number MD1740 FY Open 2007 FY_Close 2007 VCP: True. Alias Edna's Dry Cleaner. Application accepted 3/21/2012 Date issued 3/6/2014. Institutional Controls: Site Alias Edna's Dry Cleaner. Issue Date 3/6/2014, land use restricted (commercial and industrial), GW Use Restriction True.	LRP, VCP, INST CONTROLS	199.0
	2	CITYOF ROCKVILLE WATER TOWER	200 TALBOTT ST	ROCKVILLE	MD	20852	LRP: Soil pesticides Yes BMI Number MD1017 Determination-No FY Open and FY_Close not reported. VCP: No	LRP	339.8
	1	M & M INC	1331 ROCKVILLE PIKE STE H	ROCKVILLE	MD	20852	Historical Cleaner 1991-2013 Type: Drycleaning Plants, Except Rugs, NEC.	Drycleaner (Inactive/ Historical)	308.4
	1	VOB BMW DEALER	1396 ROCKVILLE PIKE	ROCKVILLE	MD	20852	Auto Dealer assumed to have a service department.	Auto	0.0
	1	MIDAS	1460 ROCKVILLE PIKE	ROCKVILLE	MD	20852	Auto repair shop.	Auto	289.5
	1	CONGRESSIONAL SUNOCO	1469 ROCKVILLE PIKE	ROCKVILLE	MD	20852	PMG CO23 in Report. OCP Facility 4323. USTs Active: three 10,000 gal Gasohol and one 10,000 diesel.	UST	153.6
	1	PLAZA CLEANERS	1607 ROCKVILLE PIKE, EAST	ROCKVILLE	MD	20852	MD Drycleaners Facility ID 031-0892 SIC 7216 Status Inactive	Drycleaner (Inactive/ Historical)	0.0
	2	JEFFERSON AT CONGRESSIONAL VILLAGE	180 HALPINE ROAD	ROCKVILLE	MD	20852	LRP: GW chlorinated Yes BMI Number MD0939 FY Open 2003 FY_Closed 2004 VCP: Application accepted 11/3/2003 Date Issued 11/3/2003, VCP True Alias Congressional Airport Type: No Further Requirements Determination (NFRD) Institutional Controls: Alias-Jefferson at Congressional Village, LP Type NFRD. Issue Date 11/3/2003. Land restriction (residential, commercial, industrial), GW Use Restriction True.	LRP, VCP, INST CONTROLS	945.8
	2	HOLLADAY PROPERTY	1900 CHAPMAN AVE	ROCKVILLE	MD	20852	LRP: Alias: Lot 14-A; Syms Corporation; Fawcett Printing Corporation; Former Haynes Lithograph Co.; Holladay Tyler Printing; Holladay Prope, GW petroleum Yes, soil petroleum Yes BMI Number MD0827 FY Open 2011 FY_Closed 2015 VCP: Application accepted 6/1/2011 Date Issued 12/5/2011, VCP True Alias Record Lot 16 Type: No Further Requirements Determination (NFRD) Institutional Controls: Record Lot 16, Type NFRD. Issue Date 11/3/2003. Land restriction (residential, commercial, industrial), GW Use Restriction True Excavation Notification Restriction True, Paving Maintenance Required True Future Construction Testing Required True Slab Maintenance Required True Excavated Material Disposal Requirement True .	LRP, VCP, INST CONTROLS	748.1
	1	COURTESY CLEANERS - ROLLINS AVENUE	108 ROLLINS AVENUE	ROCKVILLE	MD	20852-	MD Drycleaners Facility ID 031-0921 SIC 7216 Status Inactive.	Drycleaner (Inactive/ Historical)	83.7

Potential Hazardous Materials Sites Common to All Alternatives (Southern Limit to Middlebrook Road)									
	1	ROCKVILLE SERVICE CENTER	1900 ROCKVILLE PIKE	ROCKVILLE	MD	20852	OCP Facility 9019. USTs Active: one 10,000 gal diesel, two 10,000 Gasohol, and one 12,000 Gasohol.	UST	141.2
	1	PEH, LLC #812	1911 ROCKVILLE PIKE	ROCKVILLE	MD	20852	OCP Facility 3084. USTs Active: one 12,000 gal Gasohol, one 10,000 Gasohol, one 10,000 diesel, and one 8,000 Gasohol.	UST	147.4
	1	EXECUTIVE SHELL #863	12151 ROCKVILLE PIKE	ROCKVILLE	MD	20852	OCP Facility 9382. USTs Active: one 15,000 gal Gasohol and one 12,000 Gasohol.	UST	96.3
	1	AMOCO OIL COMPANY	1910 ROCKVILLE PIKE	ROCKVILLE	MD	20853	OCP Facility 4975. USTs Active: three 10,000 gal Gasohol and one 10,000 diesel.	UST	176.2
	2	MONTROSE CROSSING CENTER	12015-12099 ROCKVILLE PIKE	ROCKVILLE	MD	20852	LRP: Remediation Ongoing Yes, GW Chlorinated Yes BMI Number MD0775 FY Open 2009 FY_Closed Not Reported VCP: Applications: 1) submitted 12/28/2008 accepted 12/28/2008 and 2) submitted on 5/31/2012 accepted 10/3/2012 3)submitted 10/14/2009 accepted 10/14/2009	LRP, VCP	277.6
	3	THE FORUM CONDOMINIUM	11801 ROCKVILLE PIKE	ROCKVILLE	MD	20852	OCP Facility 9163. USTs Active: One 25,000 gal heating oil.	UST	642.9
	1	DRYCLEAN PRO - ROCKVILLE PIKE	11802 ROCKVILLE PIKE	ROCKVILLE	MD	20852	MD Drycleaners Facility 031-1712 SIC 7216 Status Inactive Historical Drycleaners 1994-2011 (Dryclean Pro) Garment Pressing and Cleaners' Agents RCRA-SQG form 02/25/2010, including spent halogenated solvents.	Drycleaner (Inactive/ Historical)	79.2
	3	US N.R.C.	11545 ROCKVILLE PIKE	ROCKVILLE	MD	20852	OCP Facility 15178. USTs Active: one 2,000 gal diesel.	UST	292.5
	1	EXXON #25719 (SOUTHSIDE OIL LLC)	11430 ROCKVILLE PIKE	ROCKVILLE	MD	20852	OCP Facility 2480. Active USTs: one 10,000 Gasohol, one 8,000 Gasohol and one 10,000 diesel. OCP Case 14-0746MO OPEN/Well/GW Contamination - Motor/Lube Oil 6/13/2014-no close date Release Yes Cleanup Not Reported	Open OCP Case, UST	106.4
	1	EXXON #28245	11433 ROCKVILLE PIKE	ROCKVILLE	MD	20852	OCP Facility 6180. USTs Active: one 6,000 Gasohol and two 8,000 Gasohol.	UST	106.4
	1	PIKE CLEANERS	11409 WOODGLEN DR	ROCKVILLE	MD	20852	Historical Cleaners 1993-2014 Type: Drycleaning Plants, Except Rugs	Drycleaner (Inactive/ Historical)	543.5
	2	WHITE FLINT CROSSING	11410 ROCKVILLE PIKE	ROCKVILLE	MD	20852	LRP: GW chlorinated Yes, GW petroleum Yes, Soil chlorinated Yes, Soil petroleum Yes, BMI Number MD1408 VCP: No	LRP	0.0
	1	CDOHY, INC	11411 ROCKVILLE PIKE	KENSINGTON	MD	20895	Auto Dealer assumed to have a service department.	Auto	0.0
	1	SCHULMAN BUICK STERLING	11407 ROCKVILLE PIKE	KENSINGTON	MD	20895	Auto Dealer assumed to have a service department.	Auto	0.0
	1	DRY CLEAN EXPO	11130 ROCKVILLE PIKE	ROCKVILLE	MD	20852	MD Drycleaners Facility 031-2192 SIC 7216 Status Active RCRA-SQG form 3/8/2010, including spent halogenated solvents.	Drycleaner (Inactive/ Historical)	206.5
	1	GEORGETOWN PREPARATORY SCHOOL	10900 ROCKVILLE PIKE	ROCKVILLE	MD	20852	OCP Facility 2460. USTs Active: one 12,000 gal heating oil, one 2,500 Gasohol and one 600 diesel.	UST	95.4
	3	10101 GROSVENOR PARK CONDO	10101 GROSVENOR PLACE	ROCKVILLE	MD	20852	OCP Facility 15168. USTs Active: one 500 gal diesel.	UST	115.1



Potential Hazardous Materials Sites Common to All Alternatives (Southern Limit to Middlebrook Road)									
	3	GROSVENOR PARK III CONDOMINIUMS	10401 GROSVENOR PLACE	NORTH BETHESDA	MD	20852	OCP Facility 20593. USTs Active: one 15,000 gal heating oil.	UST	954.9
	3	GROSVENOR PARK CONDOMINIUM	10201 GROSVENOR PLACE	NORTH BETHESDA	MD	20852	OCP Facility 12496. USTs Active: one 15,000 gal heating oil. Likely downgradient or cross gradient but don't know location of USTs.	UST	1247.3
	3	PROMENADE CONDOMINIUM	5225 POOKS HILL RD	BETHESDA	MD	20814	OCP Facility 2609. USTs Active: one 40,000 gal heating oil. Potentially upgradient.	UST	1509.6
	1	NATIONAL INSTITUTES OF HEALTH	9100 ROCKVILLE PIKE BLDG 3	BETHESDA	MD	20892	OCP Facility 8601. USTs Active: two 567,000 gal heating oil, two 10,000 heating oil, two 10,000 diesel, one 10,000 Ethanol E-85, one 10,000 gasoline, one 40,000 diesel, one 5,000 diesel, three 1,000 diesel, one 4,000 diesel, three 550 diesel, and one 600 diesel.	UST	0.0
	2	NAVAL MEDICAL COMMAND	8901 WISCONSIN AVE	BETHESDA	MD	20889	MD SHWS: No Further Remedial Action Facility ID MD-355. SEMS: Site ID 303766, EPA ID MD4170024687. Deferred to RCRA (Subtitle C), Action Name: SI 9/30/1992 through 3/10/2005 LRP: Soil Metals Yes, BMI No. MD0335 EPAID: MD4170024687 Regulatory: RCRA FTTS Inspection 9/19/87. TSCA Section 6 PCB State Conducted.	MD SHWS, SEMS, LRP	98.5
	1	NAVAL SUPPORT ACTIVITY BETHESDA	8901 WISCONSIN AVE	BETHESDA	MD	20889	OCP Facility 5980. USTs Active: one 25,000 heating oil, one 2,000 diesel, one 6,000 diesel, one 20,000 heating oil, one 10,000 Gasohol, five 1,000 diesel, two 2,500 diesel, two 20,000 Gasohol, one 15,000 diesel.	UST	98.5
	2	NAVAL SUPPORT ACTIVITY BETHESDA	8901 WISCONSIN AVE	BETHESDA	MD	20889	CORRACTS: RFA, RFIs conducted. etc. RCRA-TSDF form 5/2/2016. RCRA-LQG 2020 COR ACTION: Events / Completed ranged from 1990 through 4/19/2017	CORRACTS, RCRA-TSDF	98.5
	3	NAVAL SUPPORT ACTIVITY BETHESDA	8901 WISCONSIN AVE	BETHESDA	MD	20889	OCP Oil Operations Permit 2015-OPT-3360. Numerous ASTs. Small to large (e.g., 25,000 gal).	AST (Oil Ops Permit)	98.5
	1	NATIONAL INSTITUTES OF HEALTH	9000 ROCKVILLE PIKE	BETHESDA	MD	20892	See National Institutes of Health, 9100 Rockville Pike Bldg 3 for OCP Facility 8601	UST	1308.4
	2						LRP: BMI Number MD0150 Regulatory Deferred to Federal Facility (FF) SEMS: Site ID 300424. No Further Remedial Action Planned (NFRAP) - Site does not qualify for the NPL based on existing information. MD SHWS: Facility MD-150 No Further Remedial Action. CORRACTS: RFA, RFIs conducted. etc. RCRA-TSDF form 5/2/2016. RECRA-LQG 2020 COR ACTION: Events / Completed ranged from 1990 through 4/19/2017	LRP, SEMS, MD SHWS, CORRACTS, RCRA-TSDF	
	3						OCP Oil Operations Permit 2015-OPT-3359. Numerous ASTs. Small to large (e.g., 40,000 gal).	AST (Oil Ops Permit)	

Potential Hazardous Materials Sites Common to All Alternatives (Southern Limit to Middlebrook Road)									
	2	8300 WISCONSIN AVENUE	8300 WISCONSIN AVENUE	BETHESDA	MD	20814	LRP: BMI Number MD0883 FY Open 2013 FY_Closed 2013 VCP: Application Accepted and Approved 2/21/2013 Institutional Controls: Site Alias Trillium Condominium, Four Points Sheraton, Bethesda Ramada, Governot's House Hotel; Type: No Further Requirements Determination (NFRD); Land Use Restrictions (residential, commercial, industrial), GW Use Restriction - True	LRP, VCP, INST CONTROLS	70.7
	3	ALDON MANAGEMENT	4857 BATTERY LANE	BETHESDA	MD	20814	3rd parcel from corridor. OCP Facility 123. USTs Active: one 3,000 gal heating oil.	UST	570.0
	3	ALDON MANAGEMENT	4890 BATTERY LANE	BETHESDA	MD	20814	3rd parcel from corridor. OCP Facility 121. USTs Active: one 5,000 gal heating oil.	UST	606.0
	3	ALDON MANAGEMENT	4900 BATTERY LANE	BETHESDA	MD	20814	3rd parcel from corridor. OCP Facility 120. USTs Active: one 3,000 gal heating oil.	UST	693.6
	3	ALDON PROPERTIES	4858 BATTERY LANE	BETHESDA	MD	21814	3rd parcel from corridor. OCP Facility 122. USTs Active: one 4,000 gal heating oil.	UST	325.0
	1	BETHESDA SVC CTR OMC T/A B-CC SHELL	8240 WISCONSIN AVE	BETHESDA	MD	20814	OCP Facility 14697. USTs Active: three 10,000 gal Gasohol. Removed: five 4,000 gasoline (no date).	UST	86.7
	2	8008 WISCONSIN AVENUE	8004-8006 WISCONSIN AVENUE AND 8013 WOODMONT AVENUE		MD	20014	LRP: Alias 8008 and 8010 Wisconsin Avenue, BMI Number: MD1757 VCP-Yes FY Open 2016 FY_Closed Not Reported Notes: RAP requested VCP: Application accepted 6/17/2016 Date Issued not reported. VCP-Yes	LRP, VCP	96.9
	1	BETHESDA VALET	8010 WISCONSIN AVE	BETHESDA	MD	20814	MD Drycleaners Facility 031-1958 SIC 7216 Status Inactive. Historical Cleaners 1988-2014 Drycleaning Plants, Except Rugs (Bethesda Valet) RCRA-SQG form 1/1/1989, including spent halogenated solvents.	Drycleaner (Inactive/ Historical)	96.9
	2	4809 AUBURN AVENUE	4809 AUBURN AVENUE	BETHESDA	MD	20814	LRP: BMI Number MD1901 FY Open 2017 FY_Closed Not Reported; Notes-RAP Required VCP: Alias Duron Paint Store, Sherwin Williams Paint Store	LRP, VCP	1112.6
	3	FAIRMONT PLAZA	4801 FAIRMONT AVE	BETHESDA	MD	20814	OCP Facility 3504. USTs Active: one 6,000 gal heating oil.	UST	0.0
	1	BETHESDA VALET	7844 WISCONSIN AVE	BETHESDA	MD	20014	MD Drycleaners: Facility ID 031-0893 SIC 7216 Status Inactive Historical Drycleaner 1974-1987 Type: Drycleaning Plants, Except Rugs. (Bethesda Valet)	Drycleaner (Inactive/ Historical)	0.0
	1	CHEVY CHASE MITSUBISHI	7701 WISONSIN AVENUE	BETHESDA	MD	20814	Former auto dealer assumed to have a service department.	Auto	95.5
	1	CHEVY CHASE TRANSMISSIONS INC AND CHEVY CHASE CARS, INC.	7725 WISCONSIN AVE	BETHESDA	MD	20814	Historical Auto: 1971-1972 Gasoline Service Stations, 1995-2008 Automotive Transmission Repair Shops, and 2012-2014 New and Used Car Dealers, NEC Auto dealer assumed to have a service department.	Auto	94.5
	1	TOWN & COUNTRY DRY CLEANERS	4715 COMMERCE LANE	BETHESDA	MD	20814	MD Drycleaner Facility ID 031-0333 SIC 7216 Status Inactive Historical Cleaner 1973-1998 Type: Drycleaning Plants, Except Rugs (Town & Country Cleaners, LND, OH Max) RCRA-CESQG form 7/21/1995	Drycleaner (Inactive/ Historical)	74.0

Potential Hazardous Materials Sites Common to All Alternatives (Southern Limit to Middlebrook Road)									
	2	BETHESDA COMMERCE	7535 OLD GEORGETOWN ROAD	BETHESDA	MD	20814	LRP: GW petroleum - Yes, soil petroleum - Yes; BMI Number MD1551 FY Open 2014 FY_Closed 2016. VCP: Yes. Application accepted 10/1/2013 date issued 11/20/2015. Type: Certificate of Completion (COC) Institutional Control: alias United Bank Site; land use restrictions (residential, commercial, industrial); GW Use Restriction - True	LRP, VCP, INST CONTROLS	222.3
	2	7272 WISCONSIN AVENUE	7272 WISCONSIN AVENUE	BETHESDA	MD	20814	LRP: Alias Apex Building, Embassy Plaza. Remediation ongoing-Yes. Soil Metals-Yes, BMI Number MD1018, Determination - No. FY Open 2018 FY_Closed Not reported.	LRP	206.6
	1	SWIFT CLEANERS OF BETHESDA	7315 WIS AVENUE	BETHESDA	MD	20814	Historical Cleaner: 1994 Garment Pressing and Cleaners' Agents. 1997-98, 2004-2008 Drycleaning Plants, Except Rugs	Drycleaner (Inactive/Historical)	113.8
	2	EXXON #27437	7340 WISCONSIN AVE	BETHESDA	MD	20814	LRP: Assessment ongoing-Yes, VCP Yes, BMI Number MD1554. FY Open 2014 FY_Closed Not Reported OCP Facility 7509. All 13 USTs removed.	LRP	0.0
	2	BAINBRIDGE BETHESDA METRO SITE	7340 WISCONSIN AVENUE	BETHESDA	MD	20814	MDE LRP Reports LRP: No Determination. BMI Number MD1554 FY Open 2014 FY_Closed Not Reported EDR Reports VCP: Bainbridge Wisconsin Avenue Apartments. Application submitted 9/11/2013, posted 10/2/2013	LRP, VCP	0.0
	2	7351-7355 WISCONSIN AVENUE	7351-7355 WISCONSIN AVENUE	BETHESDA	MD	20814	LRP: Assessment ongoing-Yes; BMI Number MD1655 FY Open 2015 FY_Closed 2016 VCP: Application submitted on 9/15/2015 Date Issued 9/15/2015. Type: No Further Requirements Determination (NFRD). Institutional Controls: Alias Pheasandon LLC and Carpet Palace. Issue Date 9/15/2015 Recorded at 51129 pp 235-255.Type - NFRD. Land Use Restrictions (Commercial, Industrial), GW Use Restriction - True, Excavation Notification Restriction - True, Paving Maintenance Required True, Slab Maintenance Required - True, Excavated Material Disposal True.	LRP, VCP, INST CONTROLS	111.5
	2	BPS (CONSOLIDATED REDEVELOPMENT SITE)	7351-7359 WISCONSIN AVENUE AND 4630 MONTGOMERY AVENUE	BETHESDA	MD	20814	LRP: BMI Number MD1655 FY Open 2015 FY_Closed 2016, no Determination VCP: 0.9732 acres Application submitted on 9/29/2017 Date Issued 2/8/2018. Type: Not Reported ALSO: 0.4443 acres application accepted 12/18/2017 Date Issued 12/18/2017 Type: No Further Requirements Determination (NFRD). Institutional Controls: Includes MD1655; Bethesda Police Station, Montgomery County Office Building, Waverly Building Issue Date 12/18/2017 Type - NFRD. Land Use Restrictions (Commercial, Industrial), GW Use Restriction - True, Excavation Notification Restriction- True, Excavated Material Disposal True.	LRP, VCP, INST CONTROLS	111.5

Potential Hazardous Materials Sites Common to All Alternatives (Southern Limit to Middlebrook Road)									
	2	PARKING LOTS 31 AND 31-A	INTERSECTION OF BETHESDA AVENUE AND WOODMONT AVENUE	BETHESDA	MD	20814	LRP: Alias: The Darcy Condominium, The Flats. Withdrawn. VCP: Yes GW Chlorinated - Yes, GW Petroleum - Yes; Soil Metals - Yes; Soil PAH - Yes; Soil Petroleum - Yes BMI Number MD0829; Det - Yes; FY Open 2011 FY_Closed 2015. PropAcctID: 03705891, 03705914, 03705903, 03705925, 03705880 VCP: Most recent Application accepted: not reported. Issued 3/12/2015. VCP - True. Type: No Further Requirements Determination (NFRD). Institutional Controls: Type: NFRD Issued: 3/12/2015 Land Use Restricted (Residential, Commercial, Industrial); GW Use Restriction - True; Vapor Barrier Required - Yes; Vapor System Required - Yes; Future Testing Required - True	LRP, VCP, INST CONTROLS	111.5
	2	FORMER BELL CLEANERS AND BELL LAUNDRY	7106 WOODMONT AVENUE AND 7008-7034 WISCONSIN AVENUE	BETHESDA	MD	20815	MD Drycleaners: Facility ID 031-0213 SIC 7216 Status Inactive LRP: GW Chlorinated - Yes, Soil Chlorinated - Yes BMI Number MD1204 FYOpen 1999 FY_Closed 2002 VCP: Application accepted 6/9/2000 Date Issued 1/22/2002 VCP - True. Institutional Controls: Type: No Further Requirements Determination (NFRD). Issued: 1/22/2002 Land Use Restricted (Commercial, Industrial); GW Use Restriction - True;	LRP, VCP, INST CONTROLS	1120.8

Potential Hazardous Material Sites Alternative A (in addition to common site)									
Site #	RANK	NAME	ADDRESS	CITY	STATE	ZIP	COMMENTS	TYPE	DISTANCE (FT)
A-1	1	CLARKSBURG GROCERIES BEER & WINE	23329 FREDERICK ROAD	CLARKSBURG	MD	20871	OCP Facility 4532. Active delivery ban notice in MDE database when accessed 6/16/2018. Active USTs: two 8,000 gal Gasohol.	UST	545.1
A-2	1	FOX CHAPEL CLEANERS	23329 BREWERS TAVERN WAY	CLARKSBURG	MD	20871	Historical Cleaner 2009 - 2014 Type: Drycleaning Plants, Except Rugs	Drycleaner (Inactive/Historical)	238.9
A-3	1	MY CLEANERS 2	23235 STRINGTOWN RD	CLARKSBURG	MD	20871	Historical Cleaner 2006 - 2014 Type: Drycleaning Plants, Except Rugs	Drycleaner (Inactive/Historical)	170.0
A-4	1	CLARKSBURG 7-11	12101 SNOWDEN FARM PARKWAY	CLARKSBURG	MD	20871	OCP Facility 20580. USTs Active: 20,000 gal Gasohol, 2-compartment (12,000 diesel and 8,000 Gasohol).	UST	152.4
A-5	1	MILESTONE LIBERTY	21101 FREDERICK ROAD	GERMANTOWN	MD	20874	OCP Facility 5055. USTs Active: three 12,000 gal Gasohol.	UST	547.3
A-6	1	7-ELEVEN #34140	21040 HENDERSON CORNER ROAD				OCP FACILITY 20033. USTs Active: one 15,000 gal Gasohol and one 10,000 gal Gasohol	UST	est 100
A-7	1	WAL-MART STORE #02357	20910 FREDERICK RD	GERMANTOWN	MD	20876	Numerous ASTs.	AST (Oil Ops Permit)	539.7



A-8	1	HOLY CROSS GERMANTOWN HOSPITAL	19801 OBSERVATION DR	GERMANTOWN	MD	20876	Oil Operations Permit: 2 AST 250 gal diesel, one AST 15,000 diesel, and one AST 7,500 diesel.	AST (Oil Ops Permit)	70.6
-----	---	-----------------------------------	----------------------	------------	----	-------	---	----------------------	------

Potential Hazardous Material Sites Alternative B (in addition to common site)									
Site #	RANK	NAME	ADDRESS	CITY	STATE	ZIP	COMMENTS	TYPE	DISTANCE (FT)
B-1	1	CLARKSBURG GROCERIES BEER & WINE	23329 FREDERICK ROAD	CLARKSBURG	MD	20871	OCP Facility 4532. Active delivery ban notice in MDE database when accessed 6/16/2018. Active USTs: two 8,000 gal Gasohol.	UST	881.5
B-2	1	CLARKSBURG TRANSPORTATION & MAINTENANCE DEPOT	13100 SHAWNEE LANE	CLARKSBURG	MD	20871	OCP Facility 4665. USTs Active: one 12,000 gal Gasohol, one 20,000 diesel, and one 600 used oil.	UST	0.0
B-3	1	MOYER & SONS, INC.	13050 SHAWNEE LANE	CLARKSBURG	MD	20871	OCP Facility 20038. USTs Active: one 4,000 gal used oil	UST	339.2
B-4	1	WAL-MART STORE #02357	20910 FREDERICK RD	GERMANTOWN	MD	20876	Distance and Setting. Oil Operations Permit: AI ID 9597 at least 2 AST 400 gal motor oil, Used oil (800, 240, 200, and 25)	AST (Oil Ops Permit)	539.7
B-5	1	HOLY CROSS GERMANTOWN HOSPITAL	19801 OBSERVATION DR	GERMANTOWN	MD	20876	Oil Operations Permit: 2 AST 250 gal diesel, one AST 15,000 diesel, and one AST 7,500 diesel.	AST (Oil Ops Permit)	70.6

Potential Hazardous Material Sites Alternative C (in addition to common site)									
Site #	RANK	NAME	ADDRESS	CITY	STATE	ZIP	COMMENTS	TYPE	DISTANCE (FT)
C-1	1	CLARKSBURG GROCERIES BEER & WINE	23329 FREDERICK ROAD	CLARKSBURG	MD	20871	OCP Facility 4532. Active delivery ban notice in MDE database when accessed 8/25/2018. Active USTs: two 8,000 gal Gasohol.	UST	0.0
C-2	1	MY CLEANERS 2	23235 STRINGTOWN RD	CLARKSBURG	MD	20871	Historical Cleaner 2006 through 2014. Type: Drycleaning Plants, Except Rugs, NEC	Drycleaner (Inactive/Historical)	302.1
C-3	1	MILESTONE LIBERTY	21101 FREDERICK ROAD	GERMANTOWN	MD	20874	OCP Facility 5055. Active USTs: three 12,000 gal Gasahol	UST	207.5
C-4	1	7-ELEVEN #34140	21040 HENDERSON CORNER ROAD				OCP FACILITY 20033. USTs Active: 15,000 gal Gasohol and 10,000 gal Gasohol installed 9/1/2010.	UST	
C-5	1	SHELL SERVICE STATION	21000 FREDERICK ROAD	GERMANTOWN	MD	20876	OCP Facility 4397. USTs Active: one 10,000 gal Gasahol and one 20,000 gal Gasahol.	UST	203.9
C-6	1	PEP BOYS 566	FREDERICK RD & MILES STONE CTR	GERMANTOWN	MD	20874	Auto	Auto	0.0
C-7	1	EAST GERMANTOWN FIRE STATION	20633 BOLAND FARM ROAD	GERMANTOWN	MD	20876	OCP Facility 20039 USTs Active: 2,500 gal diesel; 1,000 Gasahol, and 2,500 diesel	UST	332.0

2-8	1	FREESTATE GERMANTOWN MD # 809	20650 FREDERICK ROAD	GERMANTOWN	MD	20876	OCP Facility 2785. USTs Active: two 20,000 gal Gasohol; one 20,000 gal diesel. Removed: four 10,000 gal gasoline on 6/23/2004,	UST	0.0
2-9	1	PMG CO 01	20510 FREDERICK ROAD	GERMANTOWN	MD	20874	OCP Facility 9591. USTs Active: two 12,000 gal Gasohol, one 8,000 E85, and one 10,000 diesel. Removed: one 550 gal gasoline. OCP Case 01-1191MO2 CLOSED/Other (Specify) 3/5/2001-3/14/2001 Release and Cleanup No. OCP Case 08-0760MO2 CLOSED/Retrofit/Repair - Motor/Lube Oil 6/5/2008-8/25/2010 Release and Cleanup Yes.	UST	248.1

DRAFT