



Montgomery County Department of Transportation
Division of Transportation Engineering

Public Meeting

Rehabilitation of Bridge No. M-0043
Mouth of Monocacy Road Over Little Monocacy River



March 12, 2020



Project Team

◆ **Montgomery County Department of Transportation**

- | | | |
|---------------------|--|--------------|
| ■ Barry Fuss | <i>Chief, Bridge Design</i> | 240-777-7261 |
| ■ Hai-Yan Zhang | <i>Project Manager</i> | 240-777-7278 |
| ■ Eric Willis | <i>Chief, Property Acquisition Section</i> | 240-777-7229 |
| ■ Demetries Oberc | Property Acquisition Specialist | 240-777-7258 |
| ■ Stella Igbinedion | <i>Traffic Project Manager</i> | 240-777-2165 |

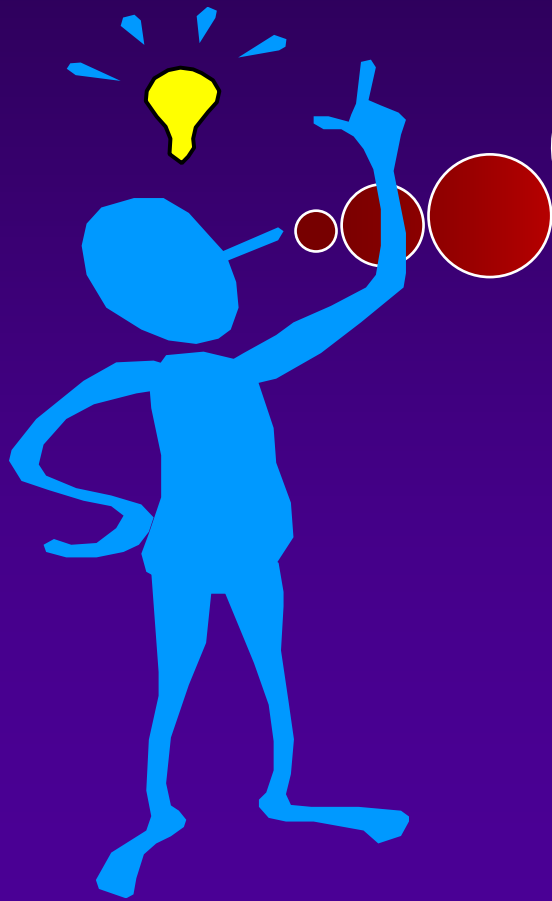
◆ **Design Consultant: Greenman-Pedersen, Inc.**

- | | | |
|---------------------------|------------------------|--------------|
| ■ <i>George Spadafino</i> | <i>Project Manager</i> | 302-203-6091 |
|---------------------------|------------------------|--------------|



Purpose of the Meeting

- ◆ **Present Current Design Plans**
- ◆ **Present Project Schedule**
- ◆ **Obtain Community Input**

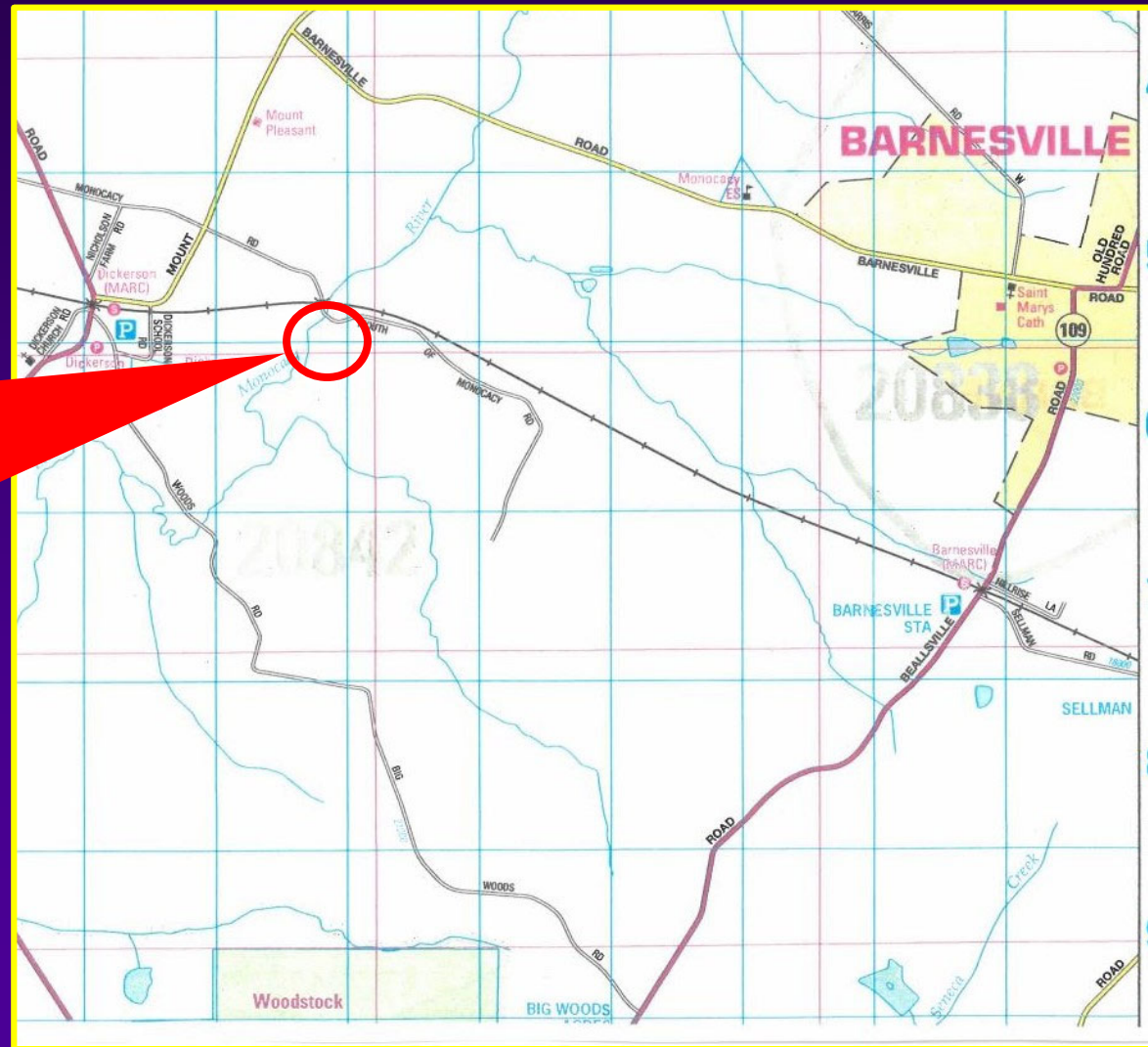


***PLEASE HOLD
YOUR QUESTIONS
UNTIL
THE END***



Project Location

Project Location





Existing Mouth of Monocacy Road Bridge





Existing Mouth of Monocacy Road Bridge

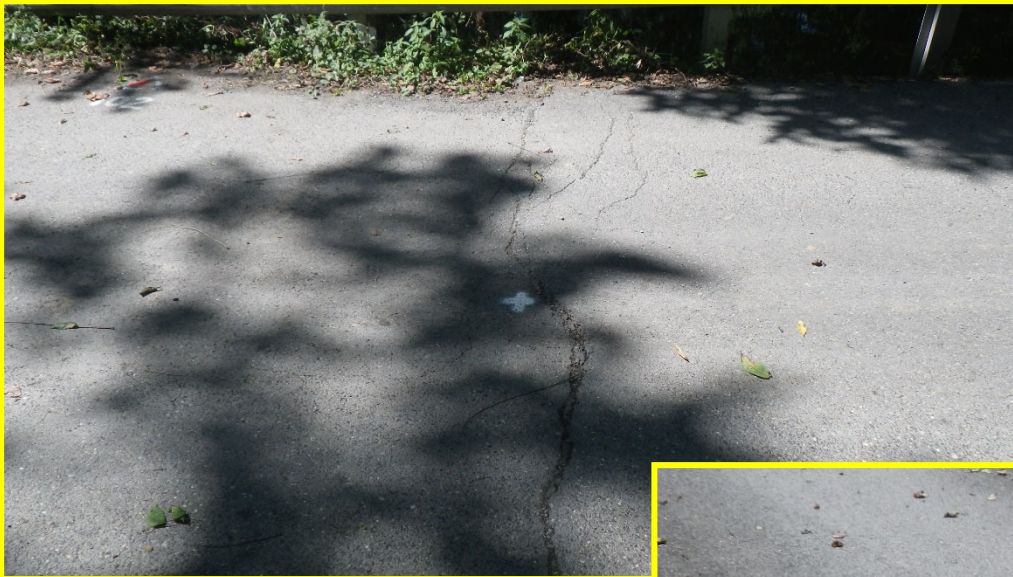
◆ Bridge Condition

- The bridge is in poor condition
- Severe corrosion and deterioration of the steel beams and bearings



Existing Mouth of Monocacy Road Bridge

◆ Pavement Deterioration





Existing Mouth of Monocacy Road Bridge

◆ Structural Deterioration



- Corrosion, section loss





Existing Mouth of Monocacy Road Bridge

◆ Structural Deterioration





Existing Mouth of Monocacy Road Bridge

◆ Structural Deterioration



- Corrosion, section loss



Existing Mouth of Monocacy Road Bridge

◆ Structural Deterioration



- Corrosion, section loss



Existing Mouth of Monocacy Road Bridge

◆ Structural Deterioration



- Corrosion, section loss



Existing Mouth of Monocacy Road Bridge

◆ Abutment Condition





Existing Mouth of Monocacy Road Bridge

◆ Streambank Erosion



- Erosion behind wingwall



Existing Mouth of Monocacy Road Bridge

◆ Streambank Erosion



- Failed concrete and asphalt streambank protection



Existing Mouth of Monocacy Road Bridge

◆ Streambank Erosion



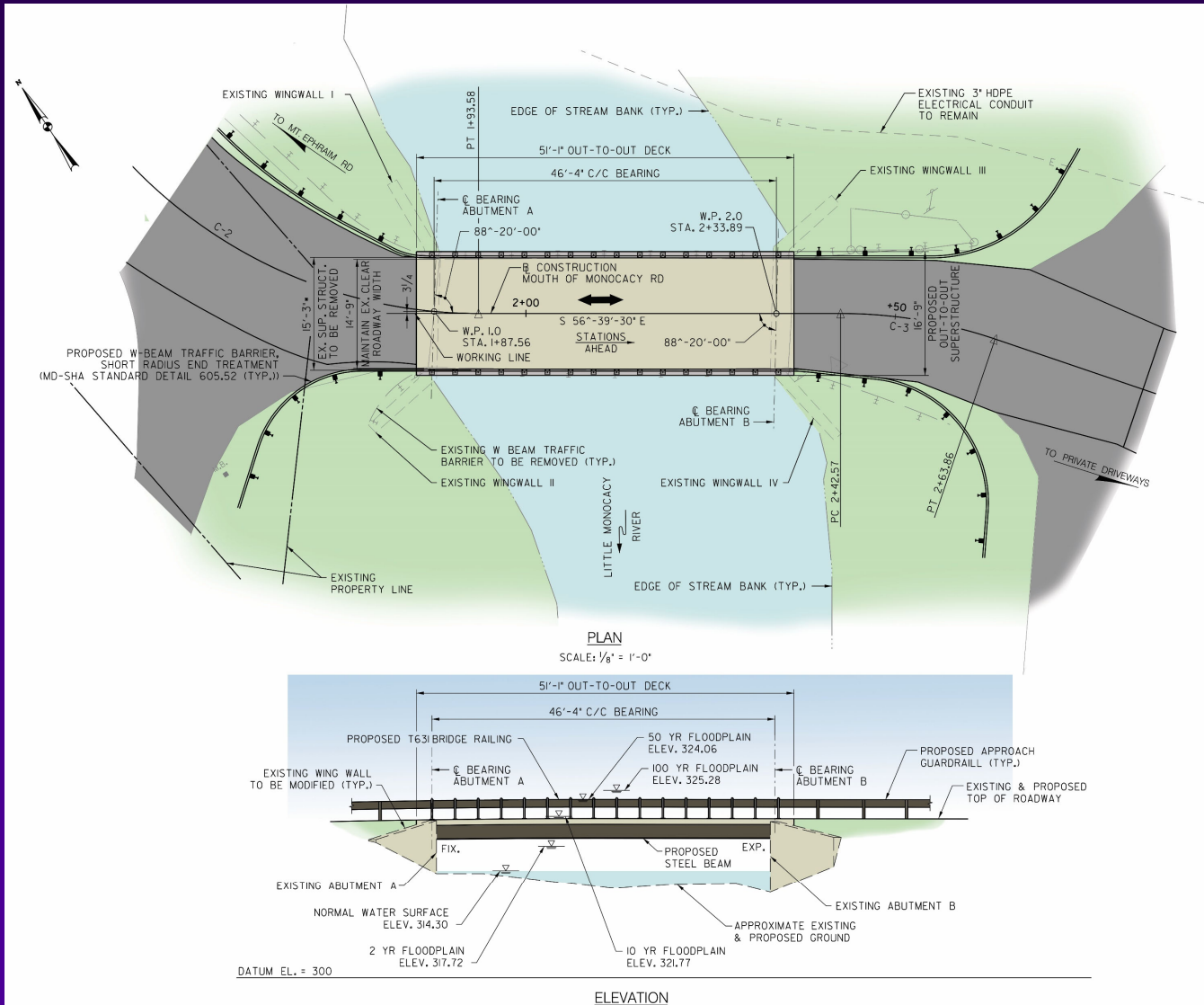


Proposed Mouth of Monocacy Road Bridge



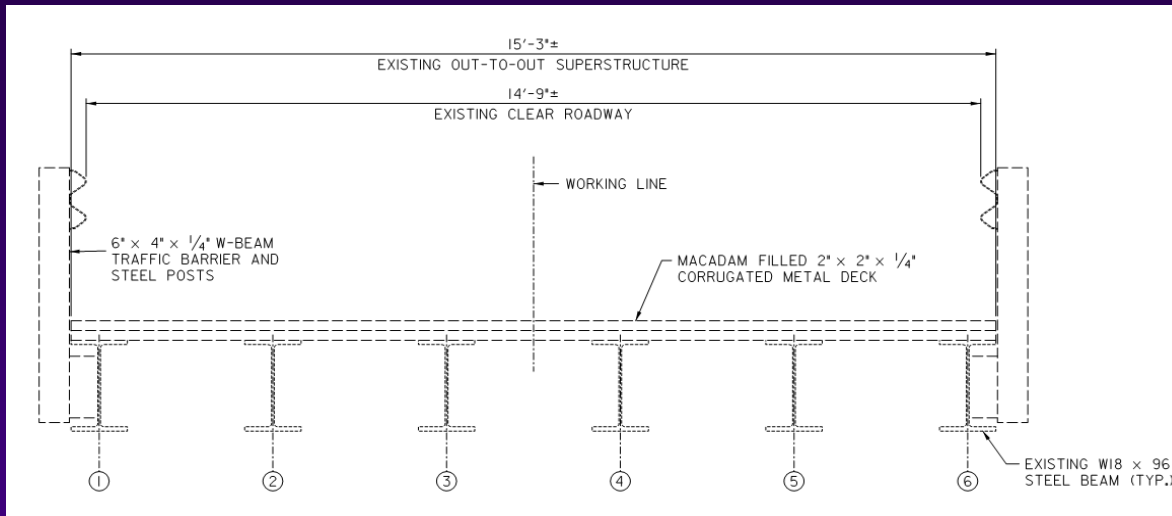


Proposed Mouth of Monocacy Road Bridge



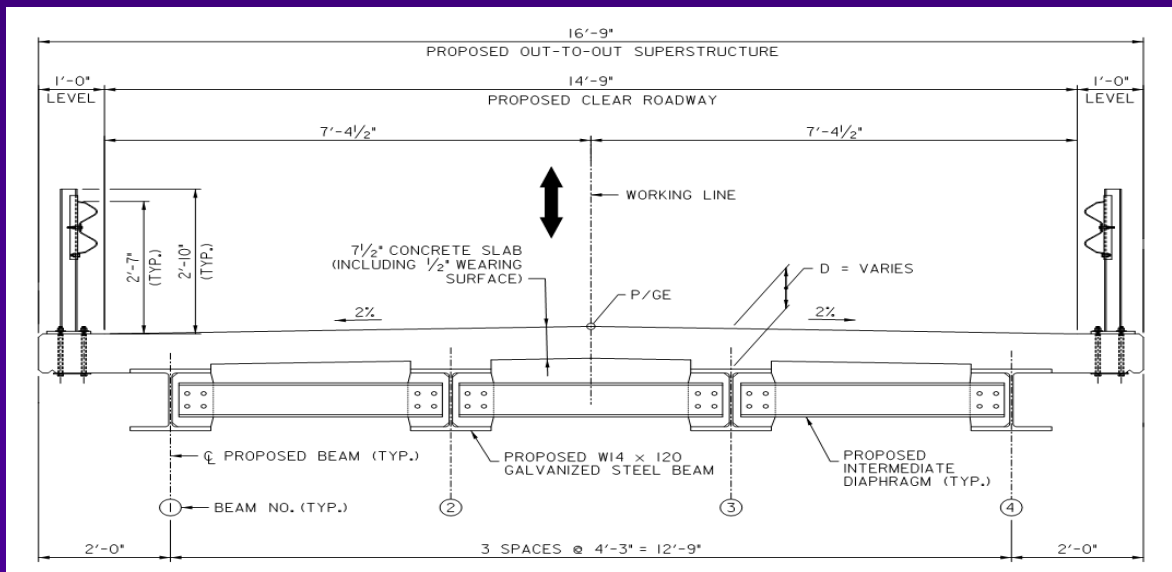


Proposed Mouth of Monocacy Road Bridge



EXISTING BRIDGE

- Clear Width = 14'-9"
- Out-to-out Width = 15'-3"
- Approach Roadway = 16'-0"



PROPOSED BRIDGE

- Clear Width = 14'-9"
- Out-to-out Width = 16'-9"
- Approach Roadway = 16'-0"



Completed Project Rendering





PROPOSED BRIDGE CONSTRUCTION

Minimum Community Disruption

- ◆ **Close the road and detour traffic.**
- ◆ **Detour will be during the summer while school is out.**
- ◆ **Anticipated detour duration: 8 to 10 weeks.**
- ◆ **Monetary incentives and disincentives to shorten construction duration to three months.**



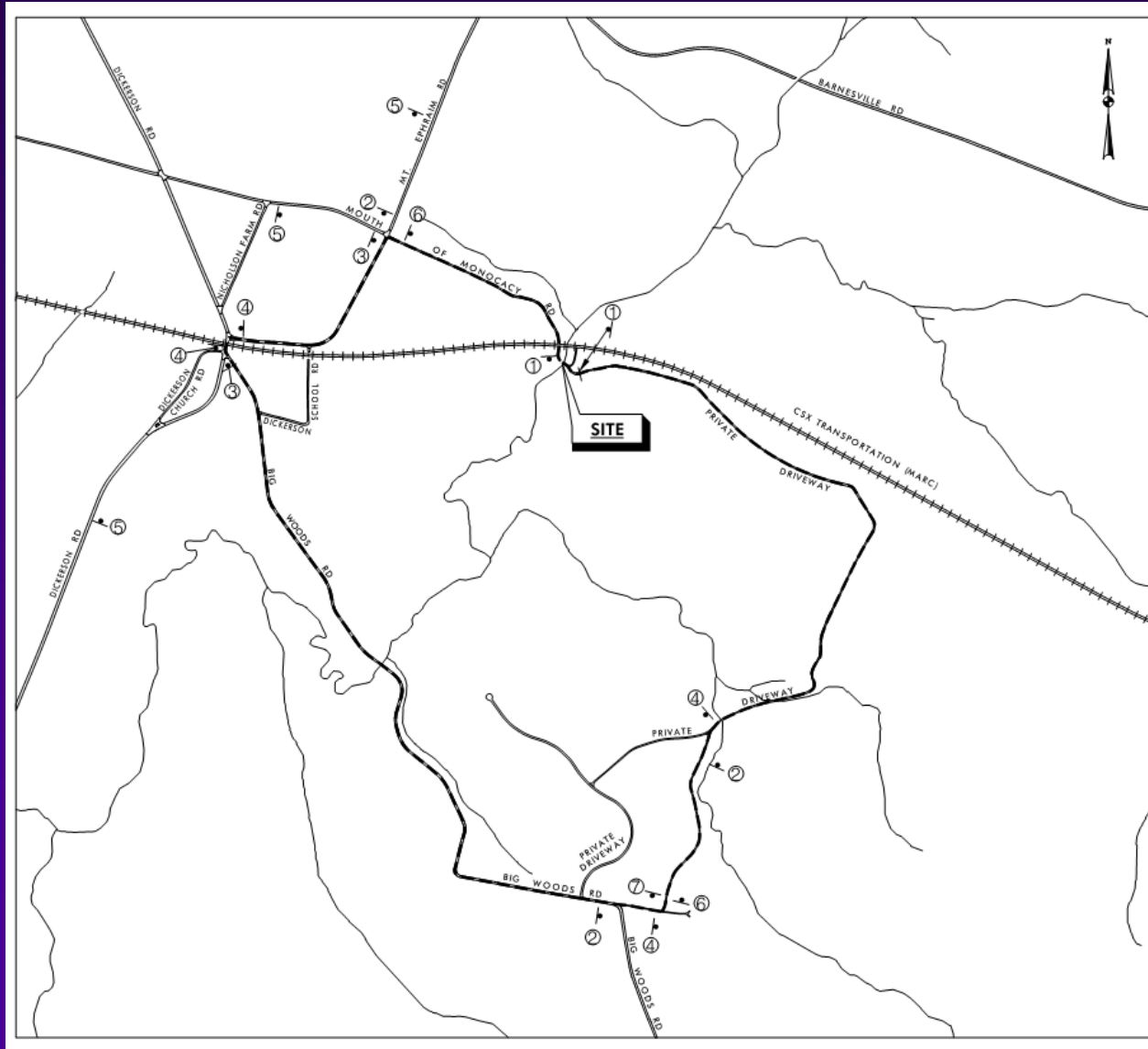
PROPOSED BRIDGE CONSTRUCTION

Minimum Community Disruption

- ◆ **Coordinate with Public**
- ◆ **Coordinate with Police, Fire and Rescue**
- ◆ **Coordinate with Rustic Road Advisory Committee**
- ◆ **Coordinate with Montgomery County Public Schools**
- ◆ **Minimize Environmental Impacts**



PROPOSED DETOUR ROUTE





Estimated Project Schedule

- ◆ **Final Design Complete – Summer 2024**
- ◆ **Advertise for Construction - Summer 2024**
- ◆ **Begin Construction - Summer 2025**
- ◆ **End Construction - Fall 2025**

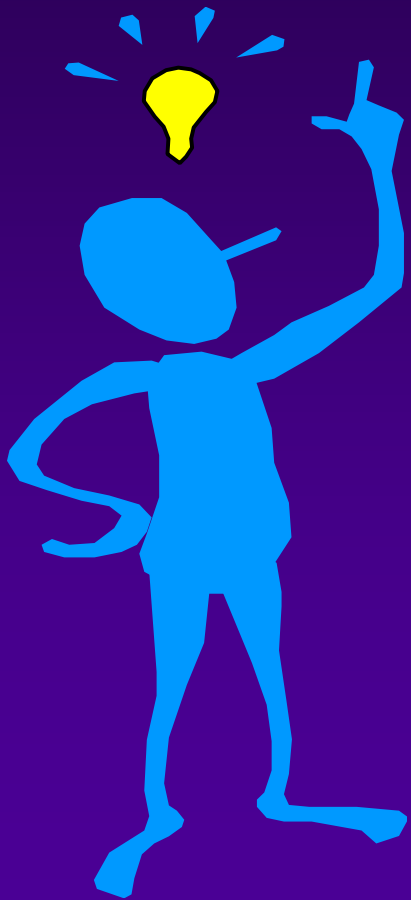


Next Step

- ◆ **Proceed with Final Design based on**
 - **Tonight's Feedback**
 - **Comments from Environmental Agencies**
 - **Comments from Coordinating Agencies**



QUESTIONS?



**Thank
You!**