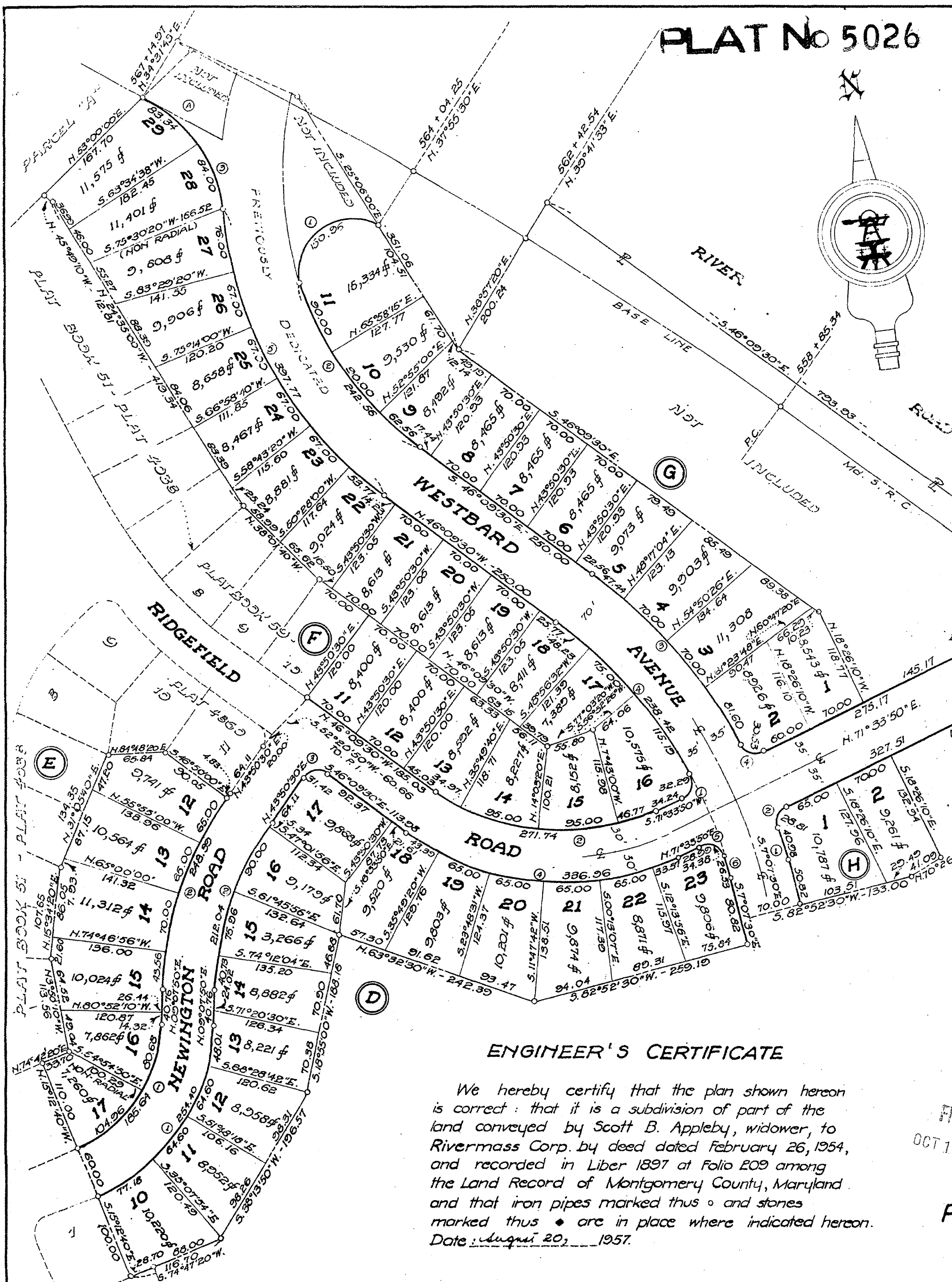
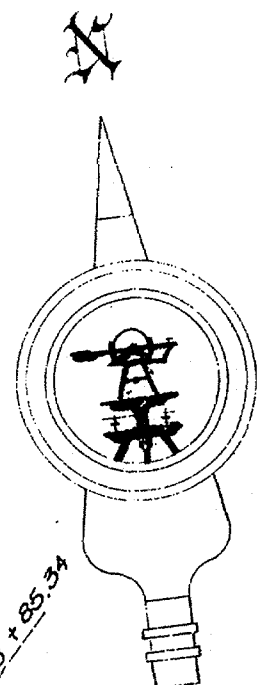


PLAT No 5026

BLK.	NO.	RAD.	ARC.	Δ.	CHD. BEARING	CHORD	TAN.
D	1	222.00	254.40	65°39'30"	N. 41°37'35" E.	240.71	143.23
	2	350.00	212.04	34°42'40"	N. 26°29'10" E.	208.81	109.39
	3	20.00	31.42	90°00'00"	N. 88°50'30" E.	28.28	20.00
	4	310.00	336.96	62°16'40"	S. 77°17'50" E.	320.61	187.29
	5	20.00	34.38	98°30'20"	S. 59°11'00" E.	30.30	23.21
	6	541.79	26.53	02°48'20"	S. 03°31'40" E.	26.53	13.27
E	1	162.00	185.64	65°30'30"	S. 41°57'35" W.	175.65	104.52
	2	410.00	248.39	34°42'40"	S. 26°29'10" W.	244.61	128.14
	3	20.00	32.29	92°30'30"	S. 25°18'35" W.	28.90	20.90
	4	250.00	271.74	62°16'40"	N. 77°17'50" W.	258.56	151.04
	5	164.89	167.34	58°19'31"	S. 26°18'32" E.	160.21	91.73
F	1	541.79	238.42	25°12'50"	S. 33°35'05" E.	236.50	121.17
	2	465.00	397.77	49°00'44"	S. 21°39'08" E.	385.75	211.97
	3	62.27	150.96	138°51'00"	N. 58°28'30" E.	116.62	166.11
	4	395.00	242.56	35°11'00"	N. 28°34'00" W.	238.76	125.24
	5	611.79	260.04	25°11'48"	N. 33°33'36" W.	266.88	136.73
G	1	20.00	30.53	87°28'28"	N. 64°41'56" W.	27.65	19.14
	2	13.48	27.75	117°53'01"	S. 12°34'50" W.	23.11	22.42
	3	20.00	21.65	62°01'59"	S. 77°25'10" E.	20.61	12.03
H	1	611.79	40.98	03°50'16"	N. 09°02'38" W.	40.97	20.50
	2	20.00	28.81	82°31'36"	N. 30°18'02" E.	26.38	17.55
	3	20.00	21.65	62°01'59"	S. 77°25'10" E.	20.61	12.03
	4	5166.80	101.70	01°07'40"	N. 54°54'27" W.	101.70	50.85



OWNER'S DEDICATION

We, Rivermass Corp., a Maryland corporation by Eugene B. Casey, President and John M. Conroy, Secretary, owners of the property shown and described hereon hereby adopt this plan of subdivision and establish the minimum building restriction lines, and dedicate the streets to public use.
Date: August 20, 1957.

By: *[Signature]* RIVERMASS CORPORATION
John M. Conroy, Secretary
By: *[Signature]*
Eugene B. Casey, President

We assent to this plan of subdivision:

[Signature] Witness
Ann B. Calder
[Signature] James Scott Appleby, Trustee
I. A. Scott B. Appleby, Jr.
[Signature] Witness
Louis J. Hopkins
[Signature] Robert K. Williams, Jr., Trustee

ENGINEER'S CERTIFICATE

We hereby certify that the plan shown hereon is correct: that it is a subdivision of part of the land conveyed by Scott B. Appleby, widower, to Rivermass Corp. by deed dated February 26, 1954, and recorded in Liber 1897 at Folio 209 among the Land Record of Montgomery County, Maryland and that iron pipes marked thus ◦ and stones marked thus • are in place where indicated hereon.
Date: August 20, 1957.

MADDOX & HOPKINS

By: *[Signature]*
Page F Hopkins
Registered Professional Engineer and Land Surveyor
Md. No. 1585

PART OF BLOCKS D, E, F, G & H
WESTWOOD
MONTGOMERY COUNTY, MARYLAND
SCALE 1"=100' AUGUST, 1957

Prepared in the Office of
MADDOX & HOPKINS
CIVIL ENGINEERS
SILVER SPRING, MD.

Note: (1) For street dedication see Plat Book 55 - Plat 4456; Plat Book 51 Plat 3395; Plat Book 59 Plat 4860
(2) The area dedicated to public use is 123,279 sq. ft. - 2.830 Acres.

THE MARYLAND-NATIONAL CAPITAL PARK & PLANNING COMMISSION
MONTGOMERY COUNTY PLANNING BOARD
APPROVED: *[Signature]* October 2, 1957
[Signature] Chairman
[Signature] Secretary Treasurer
M.-H. C. R. & P. C. RECORD FILE NO. 161-55

MONTGOMERY COUNTY CIRCUIT COURT (Subdivision Plats, MO) Plat 5026, MSA_SIF249_12841. Date available 1957/10/15. Printed 12/14/2021.