

MONTGOMERY COUNTY CIRCUIT COURT (Subdivision Plats, MO) Plat 2376, MSA_s1249_010187. Date available 1949/08/30. Printed 07/29/2021.

CURVE DATA							
Bk.	No.	RADIUS	CENT. ANGLE	ARC	TANG.	CHORD	BEARING
A	1	20.00	100° 52' 00"	35.21	24.20	30.84	N 84° 17' 30" E
A	2	20.00	79° 08' 00"	27.62	16.53	25.48	N 5° 42' 30" W
B	1	20.00	100° 52' 00"	35.21	24.20	30.84	N 84° 17' 30" E
B	2	20.00	79° 08' 00"	27.62	16.53	25.48	N 5° 42' 30" W
E	1	20.00	90° 00' 00"	31.42	20.00	28.28	N 00° 16' 30" W
E	2	20.00	90° 00' 00"	31.42	20.00	28.28	N 89° 43' 30" E
F	1	20.00	90° 00' 00"	31.42	20.00	28.28	N 89° 43' 30" E
F	2	20.00	90° 00' 00"	31.42	20.00	28.28	N 00° 16' 30" W
1	1	20.00	46° 27' 10"	16.22	8.58	15.77	N 68° 30' 05" W
1	2	2700.00	00° 52' 03"	33.31	16.65	33.31	N 87° 50' 19" E
1	3	20.00	91° 34' 37"	31.97	20.56	28.67	N 41° 36' 59" E
1	4	40.00	180° 00' 00"	125.66	—	80.00	N 85° 49' 40" E
1	5	20.00	91° 34' 37"	31.97	20.56	28.67	N 49° 57' 38" W
1	6	2700.00	5° 36' 03"	215.06	107.62	214.94	N 81° 27' 02" E
1	7	20.00	119° 53' 40"	41.85	34.57	34.62	N 18° 42' 10" E
2	1	20.00	133° 32' 50"	46.62	46.60	36.76	N 21° 29' 55" E
2	2	30.00	136° 27' 10"	71.45	75.17	55.72	N 23° 30' 05" W
2	3	20.00	90° 00' 00"	31.42	20.00	28.28	N 89° 43' 30" E
2	4	20.00	90° 00' 00"	31.42	20.00	28.28	N 00° 16' 30" W
2	5	258.02	11° 54' 50"	53.65	26.92	53.56	N 50° 40' 55" E
3	1	20.00	106° 49' 50"	41.45	26.94	32.12	N 69° 56' 45" W
3	2	20.00	95° 10' 50"	33.22	21.89	29.53	N 31° 03' 35" E
3	3	20.00	100° 15' 40"	35.00	23.95	30.70	N 51° 13' 10" W
3	4	20.00	53° 51' 20"	18.80	10.16	18.11	N 25° 50' 20" E
4	1	577.72	9° 25' 45"	95.08	47.64	94.97	N 48° 03' 08" E
4	2	20.00	88° 31' 45"	30.90	19.49	27.92	N 87° 36' 08" E
5	1	20.00	85° 59' 20"	30.02	18.65	27.28	N 84° 14' 20" W
5	2	477.72	28° 03' 00"	233.87	119.33	231.54	N 38° 44' 30" E
6	1	20.00	81° 13' 40"	28.35	17.15	26.04	N 7° 31' 10" W

PLAT No 2376

ENGINEERS' CERTIFICATE

I hereby certify that the plan hereon delineated is correct; That it is a subdivision of part of the land conveyed by Montgomery Land Company, Inc., to Elias Gelman by deed dated May 19, 1949 and recorded among the land records of Montgomery County in Liber 1257 at Folia 281;

And being in part a **resubdivision** of all of Block A, Lots 7, 8, 9 and 10 Block B, Lots 6, 7, 8, 9, 10 and 11 Block E and Lots 12, 4, 5, 6, 10, 11 and 12 Block F, **GLENMONT HEIGHTS** as recorded among the said land records in Plat Book No. 6 on Plat No. 533;

That stones shown thus \blacksquare and iron pipe shown thus \circ are in place where indicated.

August 12, 1949

Thomas G. Oyster
 Thomas G. Oyster, Regis. Surveyor
 Md. # 1673

OWNER'S DEDICATION

We, Elias Gelman and Vittle K. Gelman, his wife, owners of the property shown and described hereon, hereby adopt this plan of subdivision, establish the minimum building restriction lines and dedicate the streets to public use.

There are no suits of action, leases, liens or trusts on the property included in this subdivision.

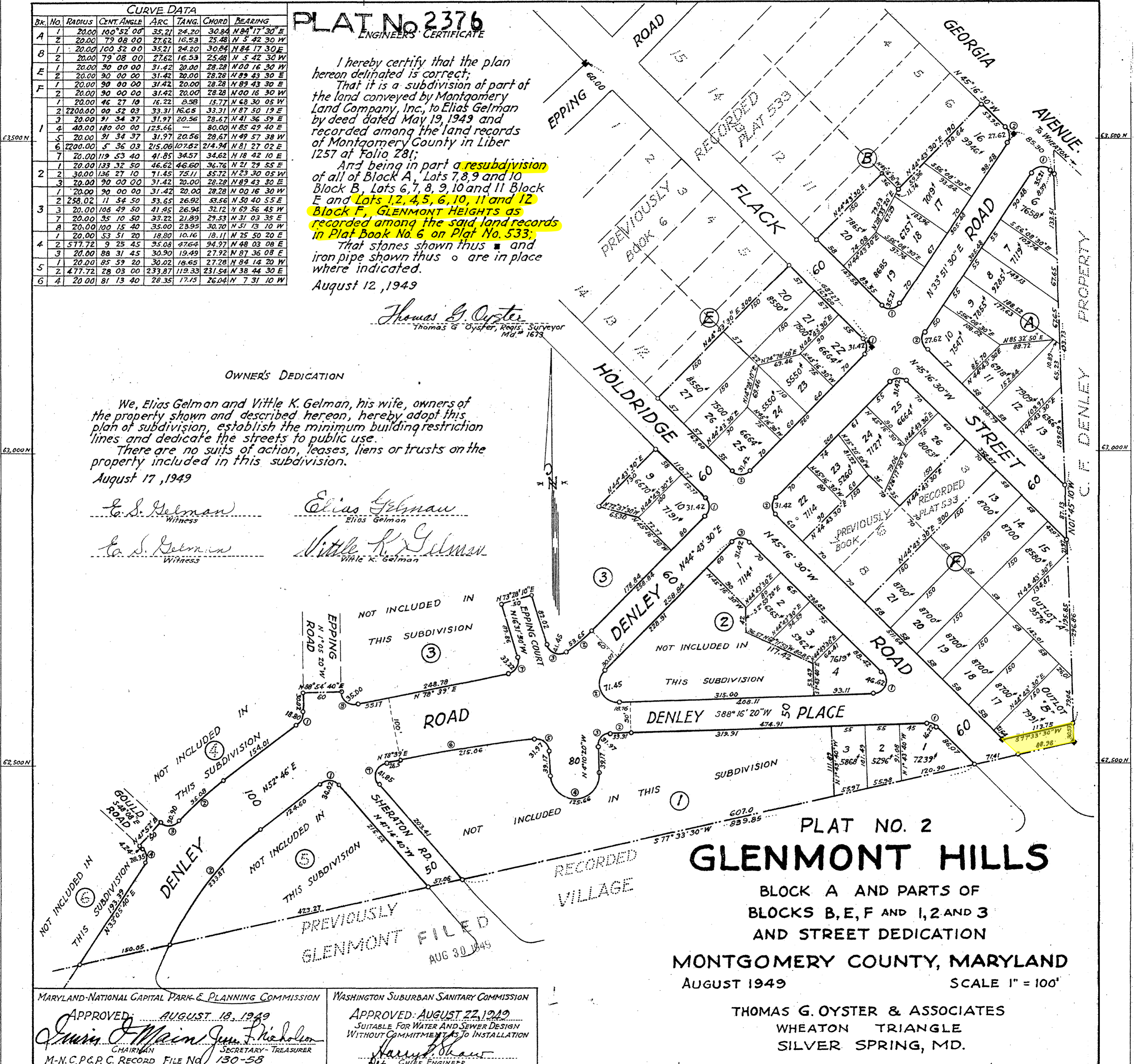
August 17, 1949

E. S. Gelman
 Witness

E. S. Gelman
 Witness

Elias Gelman
 Elias Gelman

Vittle K. Gelman
 Vittle K. Gelman



PLAT NO. 2
GLENMONT HILLS
 BLOCK A AND PARTS OF
 BLOCKS B, E, F AND 1, 2 AND 3
 AND STREET DEDICATION
 MONTGOMERY COUNTY, MARYLAND
 AUGUST 1949

THOMAS G. OYSTER & ASSOCIATES
 WHEATON TRIANGLE
 SILVER SPRING, MD.

MARYLAND-NATIONAL CAPITAL PARK & PLANNING COMMISSION
 APPROVED: AUGUST 18, 1949
Erwin J. Main CHAIRMAN
John F. Nicholson SECRETARY-TREASURER
 M-N.C.P.C. RECORD FILE NO. 130-58

WASHINGTON SUBURBAN SANITARY COMMISSION
 APPROVED: AUGUST 22, 1949
 SUITABLE FOR WATER AND SEWER DESIGN
 WITHOUT COMMITMENT AS TO INSTALLATION
Harvey Shaw CHIEF ENGINEER