



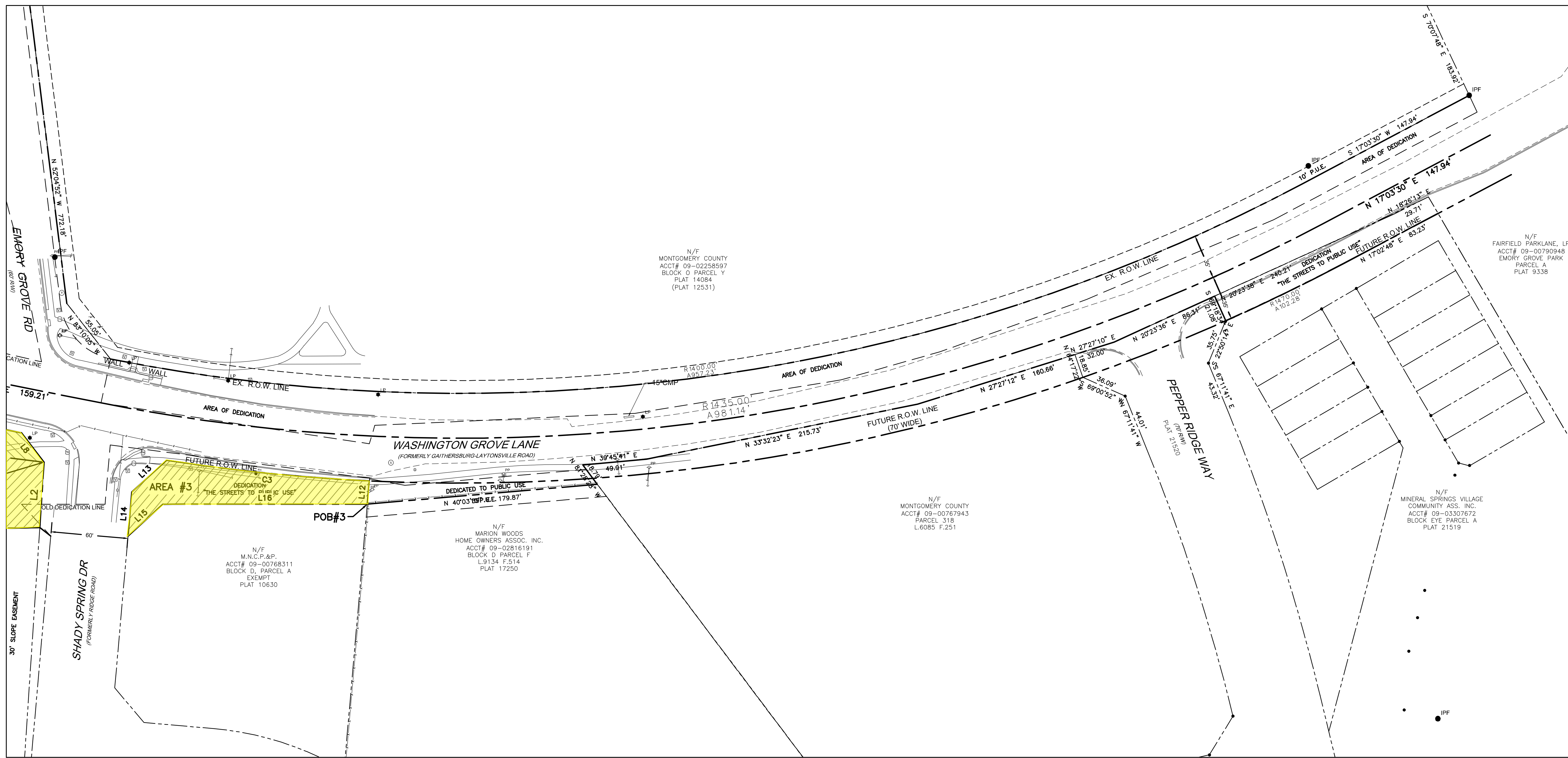
VICINITY MAP
NOT TO SCALE
SOURCE: MD FINDER ONLINE
PARCEL VIEWER

LEGEND			
	TRAVERSE LINE, CENTER LINE OR BASELINE		TELEPHONE MANHOLE
	RIGHT OF WAY LINE		UNMARKED MANHOLE
	PROPERTY LINE		SANITARY MANHOLE
	EDGE OF PAVEMENT		DRAINAGE MANHOLE
	CURB LINE		MAJOR CONTOUR
	DEPRESSED CURB		MINOR CONTOUR
	CHAIN FENCE		SPOT ELEVATION
	WETLAND LINE		TOP OF CURB ELEV.
	MUNICIPAL BOUNDARY		BOTTOM OF CURB ELEV.
	TREE LINE		U/G CABLE TV LINE
	ELECTRICAL MANHOLE		U/G FIBER OPTIC LINE
	WATER MANHOLE		U/G TELEPHONE LINE
	TRAFFIC SIGNAL POLE		OVERHEAD WIRE
	POLE MOUNTED LIGHT		WATER MAIN
	UTILITY POLE		GAS MAIN
	GUY WIRE		SAN. SEWER LATERAL
	TRANSFORMER		SAN. SEWER MAIN
	FIRE DEPT. CONNECTION		STORM PIPE
	FIRE HYDRANT		WETLAND MARKER
	WATER VALVE		TREE
	GAS VALVE		ROADWAY SIGN
	SANITARY CLEANOUT		TRAFFIC FLOW
	CONCRETE MONUMENT		MAILBOX
	CAPPED REBAR/IRON PIPE		STORM INLET TYPE "A"
			STORM INLET TYPE "B"
			STM. DBL. INLET TYPE "B"
			STORM INLET TYPE "E"
			STM. DBL. INLET TYPE "E"
			FLARED END SECTION
			HEADWALL

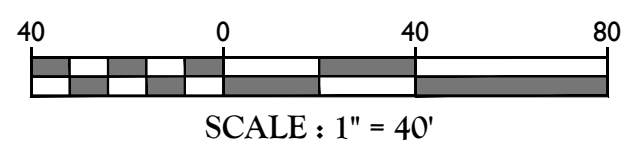
ABBREVIATIONS			
D.C. = DEPRESSED CURB	BOL = BOLLARD	FF = FINISH FLOOR	DPR = DEPRESSED
BC = BOTTOM OF CURB	GR7 = GRATE	UV = UNKNOWN VALVE	MHW = MEAN HIGH WATERLINE
TC = TOP OF CURB	MB = MAILBOX	MH = MANHOLE	CL = CENTERLINE
			PM = PARKING METER
			MHW = MEAN HIGH WATERLINE
			MWL = MEAN LOW WATERLINE
			BW = BOTTOM WALL
			TW = TOP OF WALL

SURVEY NOTES

- THIS FIELD SURVEY WAS PERFORMED BY COLLIER'S ENGINEERING & DESIGN IN JULY, 2022 AND REFLECTS SITE CONDITIONS AS OF THAT DATE.
- COORDINATES & BEARINGS SHOWN HEREON WERE ESTABLISHED BY GNSS RTN (KEYNET) OBSERVATIONS AND ARE REFERENCED TO THE MD STATE PLANE COORDINATE SYSTEM NAD83(2011) ZONE 1900.
- ADDITIONAL INFORMATION SHOWN HEREON IS TAKEN FROM MONTGOMERY COUNTY GIS OPEN DATA.
- PROPERTY OWNER INFORMATION WAS TAKEN FROM PUBLIC INFORMATION FROM MARYLAND'S MARYLAND DEPARTMENT OF PLANNING "FINDER ONLINE" WEB APPLICATION AND MAY NOT BE CURRENT OR CORRECT.



© 2022 COLLIER'S ENGINEERING & DESIGN, INC. ALL RIGHTS RESERVED. THIS DRAWING IS THE PROPERTY OF COLLIER'S ENGINEERING & DESIGN, INC. AND IS NOT TO BE REPRODUCED OR TRANSMITTED IN ANY FORM OR BY ANY MEANS, ELECTRONIC OR MECHANICAL, WITHOUT THE EXPRESS WRITTEN PERMISSION OF COLLIER'S ENGINEERING & DESIGN, INC.



I HEREBY CERTIFY THAT I AM A REGISTERED PROFESSIONAL LAND SURVEYOR, LICENSED IN THE STATE OF MARYLAND AND THAT THIS SURVEY PLAT WAS PREPARED BY ME OR UNDER MY DIRECT SUPERVISION, AND IS IN COMPLIANCE WITH COMAR 09.13.06.12 OF THE MINIMUM STANDARDS OF PRACTICE.

RUSSELL H. SMITH
PROFESSIONAL LAND SURVEYOR,
MARYLAND REGISTRATION NO. 21637
LICENSE EXPIRATION DATE: 12/25/2023

DATE

Colliers
Engineering
& Design

www.colliersengineering.com

Copyright © 2022, Colliers Engineering & Design All Rights Reserved. This drawing and all the information contained herein is authorized for use only by the party for whom the services were contracted or to whom it is certified. This drawing may not be copied, revised, disclosed, distributed or relied upon for any other purpose without the express written consent of Colliers Engineering & Design.

Doing Business as **MASER CONSULTING**

811 PROTECT YOURSELF
ALL STATES REQUIRE NOTIFICATION OF EXCAVATORS, DESIGNERS, OR ANY PERSON PREPARING TO DISTURB THE EARTH'S SURFACE ANYWHERE IN ANY STATE.

Know what's below.
Call before you dig.
FOR STATE SPECIFIC DIRECT PHONE NUMBERS VISIT: WWW.CALL811.COM

REV.	DATE	DRAWN BY	DESCRIPTION

Russell Harlold Smith
MARYLAND LAND SURVEYOR
LICENSE NUMBER: 21637
COLLIERS ENGINEERING & DESIGN

PLANIMETRIC SURVEY OF UTILITIES & R.O.W. FOR HOUSING OPPORTUNITIES COMMISSION

WASHINGTON GROVE LANE
MONTGOMERY COUNTY MARYLAND

Colliers COLUMBIA
6240 Old Dobbin Lane,
Suite 100
Columbia, MD 21045
Phone: 443.393.6021
COLLIERS ENGINEERING & DESIGN, INC.
DOING BUSINESS AS MASER CONSULTING

SCALE: AS SHOWN	DATE: 10/19/22	DRAWN BY: JAF	CHECKED BY: RHS
PROJECT NUMBER: 22003338A	DRAWING NAME: V-BNDY		

SHEET TITLE
RIGHT OF WAY SURVEY

SHEET NUMBER
2 of 2