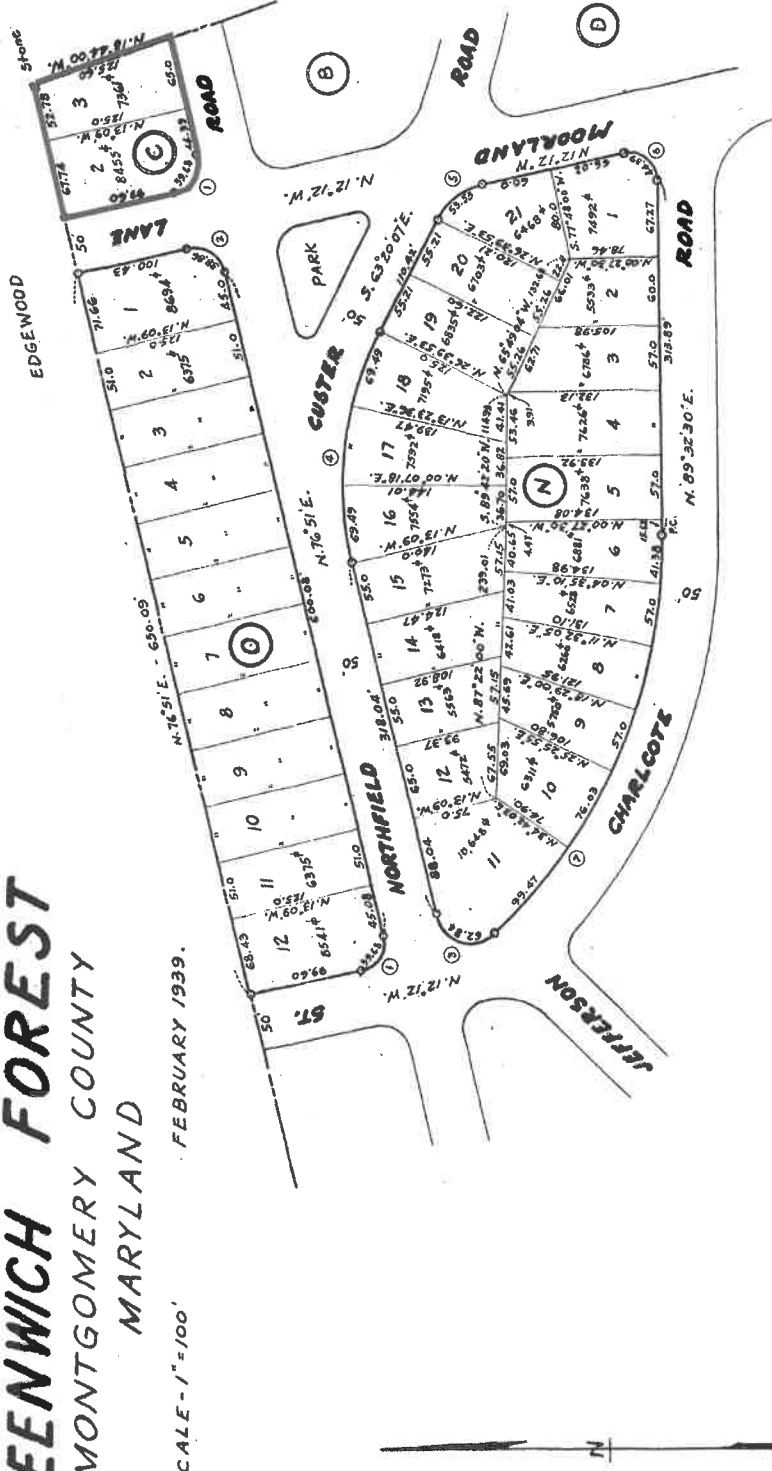


PLAT No. 1064

A SUBDIVISION OF  
**BLOCKS C, N, AND O**  
**GREENWICH FOREST**  
 MONTGOMERY COUNTY  
 MARYLAND

SCALE - 1" = 100'  
 FEBRUARY 1939.



ENGINEERS CERTIFICATE

I hereby certify that the plan shown hereon is correct; that it is a subdivision of part of the land conveyed by Shirley R. Kaplan to Greenwich Forest Incorporated by deed dated December 14, 1934 and recorded in the land records of Montgomery County, Maryland in Liber 582, folio 371; and that iron pipes marked thus -

February 16, 1939.

*Milton M. Price*  
 MILTON M. PRICE, ENGINEER

OWNERS DEDICATION

We, Greenwich Forest Incorporated, a Maryland Corporation, by Joseph Carroll, President and Adah May Brady, Secretary, owners of the property shown and described hereon, hereby adopt this plan of subdivision, establish the minimum building restriction lines, and dedicate the streets and park to public use.

Date: February 16, 1939.

Greenwich Forest Incorporated  
 By *Joseph Carroll*  
 Joseph Carroll, President  
 Attest *Adah May Brady*  
 Adah May Brady, Secretary

FILED  
 MAR 9 1939

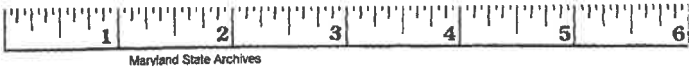
DYER & PRICE  
 CIVIL ENGINEERS  
 HYATTSVILLE, MD.

Curve Table

No.	Rad.	Arc	Tan.	Chd.	Chd. Bear.	Δ
1	250	39.68	25.42	35.65	S. 57° 41' 00" E.	90° 57'
2	250	38.86	24.59	35.06	N. 32° 20' 10" E.	89° 03'
3	300	62.84	51.98	51.97	N. 16° 56' 04" E.	120° 01' 25"
4	300	208.47	108.64	204.30	S. 85° 14' 34" E.	39° 28' 53"
5	600	53.55	28.70	51.79	S. 37° 46' 06" E.	51° 08' 07"
6	250	44.39	30.73	38.80	S. 38° 40' 55" W.	101° 44' 30"
7	470	387.88	205.76	376.97	N. 66° 48' 57" W.	47° 17' 07"

WASHINGTON SUBURBAN SANITARY DISTRICT  
 APPROVED: FEB. 16, 1939  
 AS TO SUITABILITY FOR WATER AND SEWER  
*Henry Stuebel*  
 CHIEF ENGINEER

MARYLAND - NATIONAL CAPITAL PARK & PLANNING COMMISSION  
 APPROVED: FEB. 17, 1939  
 DATE  
*Joseph E. Price*  
 CHIEF ENGINEER  
 M.-N.C.P. & P.C. RECORD FILE No. 1007



Maryland State Archives