

PLAT No 4456  
PART 1.

PART 2.

THE MARYLAND-NATIONAL CAPITAL PARK & PLANNING COMMISSION

APPROVED FEBRUARY 23 1956

CHAIRMAN SECRETARY TREASURER

M.-N.C.P. & P.C. RECORD FILE No. 155-14

CURVE DATA						
No.	RAD.	ARC.	Δ	CHD. BEARING	CHORD	TAN.
1	541.79	369.10	39° 02' 00"	S 26° 38' 30" E	362.00	192.04
2	611.79	416.79	39° 02' 00"	S 26° 38' 30" E	408.77	216.85
3	1399.46	413.60	16° 56' 00"	S 15° 35' 30" E	412.10	208.32
4	1329.46	392.21	16° 56' 00"	S 15° 35' 30" E	391.48	197.90
5	826.30	892.57	55° 12' 35"	S 3° 32' 47" W	658.44	484.36
6	936.30	960.03	55° 12' 35"	N 3° 32' 47" E	923.31	520.96
7	465.00	561.22	69° 09' 07"	N 11° 34' 57" W	527.77	320.49
8	395.00	467.25	67° 46' 34"	N 12° 16' 13" W	440.48	265.31
9	20.00	31.05	88° 57' 05"	S 75° 37' 37" W	28.02	19.64
10	20.00	31.78	91° 02' 55"	S 14° 22' 22" E	28.54	20.37
11	15.00	27.67	105° 41' 01"	N 21° 41' 26" W	23.91	19.79
12	15.00	20.02	79° 53' 40"	N 71° 05' 55" E	19.26	12.56
13	200.00	192.47	57° 08' 34"	S 76° 53' 47" W	191.30	108.91
14	270.00	295.56	62° 43' 15"	N 79° 41' 08" E	281.03	164.55

OWNER'S DEDICATION

WE, RIVERMASS CORPORATION, A MARYLAND CORPORATION, BY EUGENE B. CASEY, PRESIDENT AND EDWARD J. KYLE, ASSISTANT SECRETARY, OWNERS OF THE PROPERTY SHOWN AND DESCRIBED HEREON, HEREBY ADOPT THIS PLAN OF SUBDIVISION, ESTABLISH THE MINIMUM BUILDING RESTRICTION LINES AND DEDICATE THE STREETS TO PUBLIC USE.  
DATE: JANUARY 31<sup>ST</sup> 1956

RIVERMASS CORPORATION

ATTEST  
EDWARD J. KYLE  
SECRETARY

BY  
EUGENE B. CASEY  
PRESIDENT

WE ASSENT TO THIS PLAN OF SUBDIVISION:

Robert D. Brown, Jr.  
WITNESS

SCOTT B. APPELBY, JR.  
TRUSTEE

WITNESS

JOSEPH E. KELLER  
TRUSTEE

Lutz L. Conroy  
WITNESS

ROBERT K. WALLING, JR.  
TRUSTEE

Deine J. Hopkins  
WITNESS

JOHN M. CONROY  
TRUSTEE

WITNESS

HAROLD M. GOLDBLATT  
TRUSTEE

NOTE: AREA OF STREET DEDICATION BY THIS PLAT: 311,101 ±

ENGINEER'S CERTIFICATE

WE HEREBY CERTIFY THAT THE PLAN SHOWN HEREON IS CORRECT, THAT IT IS A SUBDIVISION OF LAND CONVEYED TO RIVERMASS CORPORATION BY THE FOLLOWING DEEDS:

No	GRANTEE	DATE	LIBER	FOLIO
1	SCOTT B. APPELBY, WIDOWER	FEBRUARY 26, 1954	1897	209
2	MASSLAND CORPORATION	APRIL 1, 1954	1906	549
3	PHOTO TECHNICAL LABORATORY, INC.	AUGUST 25, 1954	1956	504
4	ALBERT W. WALKER, ET AL	JULY 11, 1955	2089	185
5	MARGARET FOSTER, WIDOW	JULY 12, 1955	2088	187
6	PROBIE M. DUNN, ET VIR	JULY 13, 1955	2086	185

ALL AMONG THE LAND RECORDS OF MONTGOMERY COUNTY, MARYLAND AND THAT IRON PIPES MARKED THUS ● AND STAKES MARKED THUS ◆ ARE IN PLACE WHERE SHOWN.  
DATE: Feb 2, 1956

MADDOX & HOPKINS

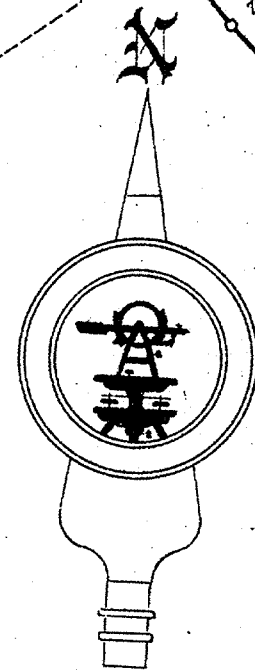
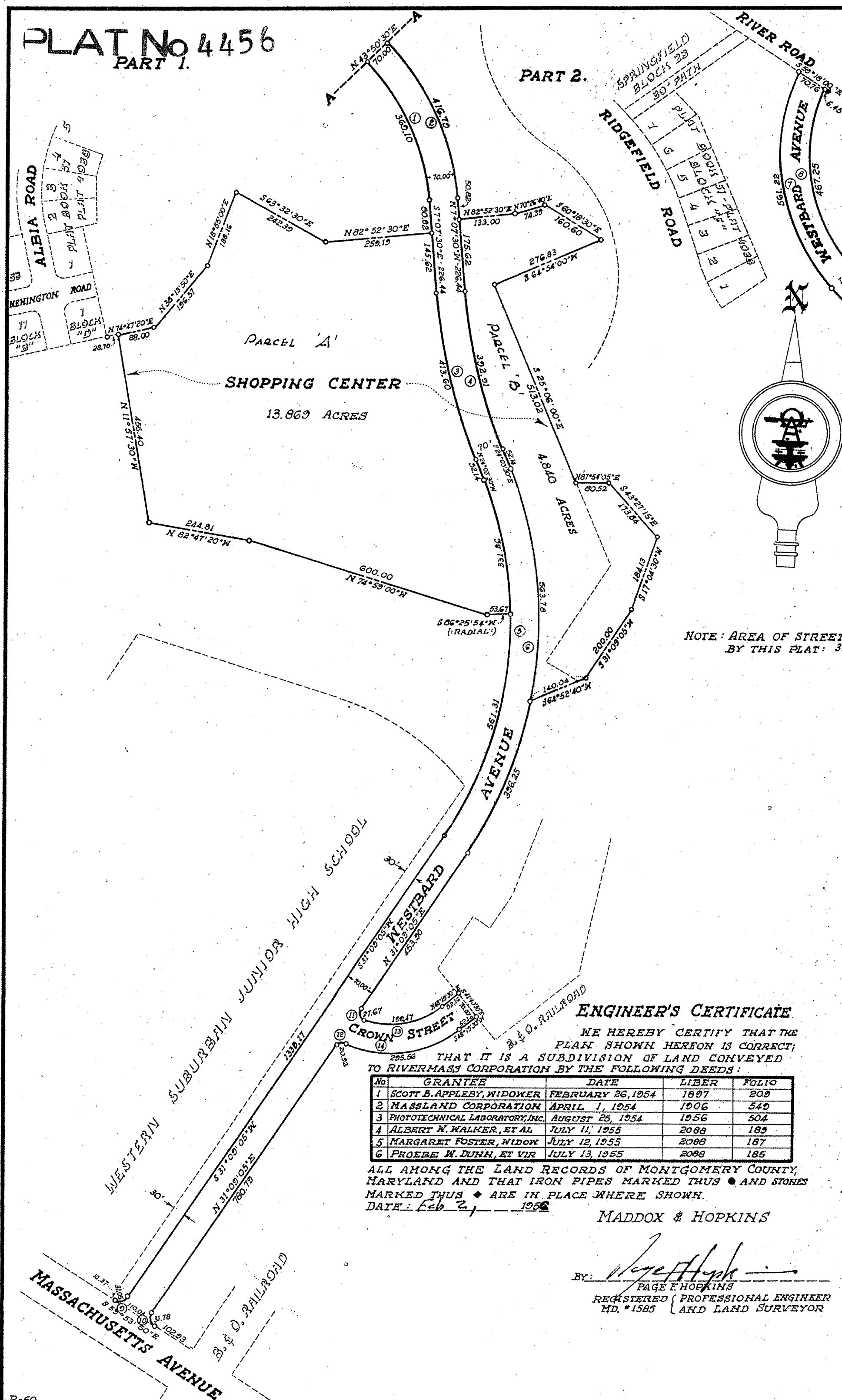
By: *W. Hopkins*  
PAGE F HOPKINS  
REGISTERED PROFESSIONAL ENGINEER  
MD. #1585 AND LAND SURVEYOR

WESTWOOD SHOPPING CENTER  
MONTGOMERY COUNTY, MARYLAND  
SCALE: 1" = 200'  
NOVEMBER, 1955

MADDOX & HOPKINS  
CIVIL ENGINEERS  
SILVER SPRING, MD.

MAR 9 - 1956

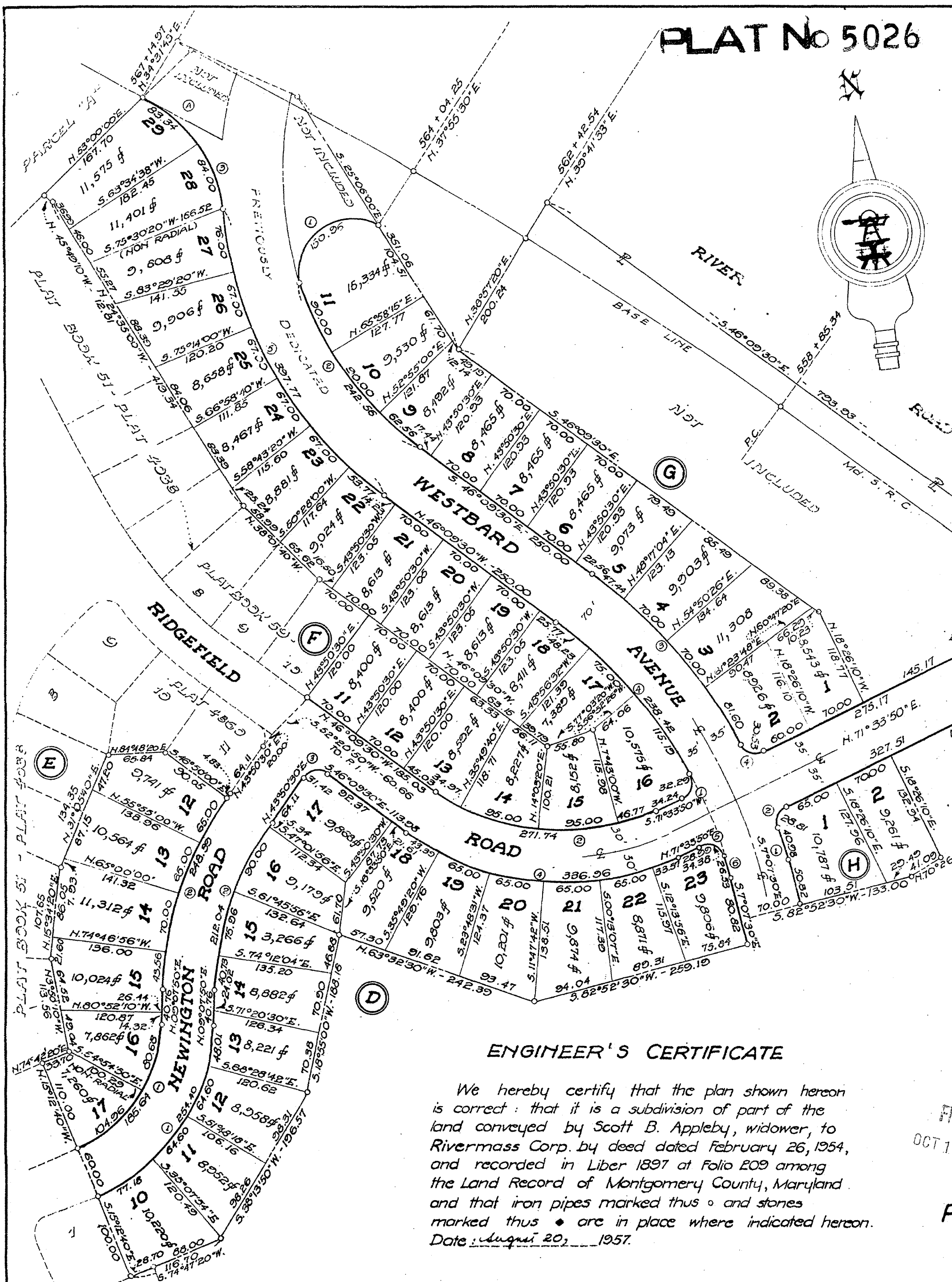
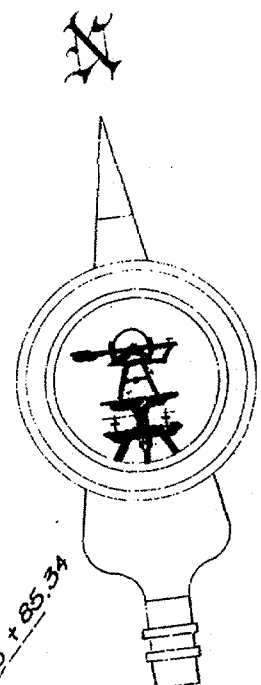
MONTGOMERY COUNTY CIRCUIT COURT (Subdivision Plats, MO) Plat 4456, MSA\_s1249\_012270. Date available 1956/03/09. Printed 09/19/2023.





# PLAT No 5026

BLK.	NO.	RAD.	ARC.	Δ.	CHD. BEARING	CHORD	TAN.
D	1	222.00	254.40	65°39'30"	N. 41°37'35" E.	240.71	143.23
	2	350.00	212.04	34°42'40"	N. 26°29'10" E.	208.81	109.39
	3	20.00	31.42	90°00'00"	N. 88°50'30" E.	28.28	20.00
	4	310.00	336.96	62°16'40"	S. 77°17'50" E.	320.61	187.29
	5	20.00	34.38	98°30'20"	S. 59°11'00" E.	30.30	23.21
	6	541.79	26.53	02°48'20"	S. 03°31'40" E.	26.53	13.27
E	1	162.00	185.64	65°30'30"	S. 41°57'35" W.	175.65	104.52
	2	410.00	248.39	34°42'40"	S. 26°29'10" W.	244.61	128.14
	3	20.00	32.29	92°30'30"	S. 25°18'35" W.	28.90	20.90
	4	250.00	271.74	62°16'40"	N. 77°17'50" W.	258.56	151.04
	5	164.89	167.34	58°19'31"	S. 26°18'32" E.	160.21	91.73
F	1	541.79	238.42	25°12'50"	S. 33°35'05" E.	236.50	121.17
	2	465.00	397.77	49°00'44"	S. 21°39'08" E.	385.75	211.97
	3	62.27	150.96	138°51'00"	N. 58°28'30" E.	116.62	166.11
	4	395.00	242.56	35°11'00"	N. 28°34'00" W.	238.76	125.24
	5	611.79	260.04	25°11'48"	N. 33°33'36" W.	266.88	136.73
G	1	20.00	30.53	87°28'28"	N. 64°41'56" W.	27.65	19.14
	2	13.48	27.75	117°53'01"	S. 12°34'50" W.	23.11	22.42
	3	20.00	21.65	62°01'59"	S. 77°25'10" E.	20.61	12.03
H	1	611.79	40.98	03°50'16"	N. 09°02'38" W.	40.97	20.50
	2	20.00	28.81	82°31'36"	N. 30°18'02" E.	26.38	17.55
	3	20.00	21.65	62°01'59"	S. 77°25'10" E.	20.61	12.03
	4	5166.80	101.70	01°07'40"	N. 54°54'27" W.	101.70	50.85



**OWNER'S DEDICATION**

We, Rivermass Corp., a Maryland corporation by Eugene B. Casey, President and John M. Conroy, Secretary, owners of the property shown and described hereon hereby adopt this plan of subdivision and establish the minimum building restriction lines, and dedicate the streets to public use.

Date: August 20, 1957.

By: *[Signature]* RIVERMASS CORPORATION  
 John M. Conroy, Secretary

By: *[Signature]*  
 Eugene B. Casey, President

We assent to this plan of subdivision:

*[Signature]* Witness  
 Ann B. Calder

*[Signature]* James Scott Appleby, Trustee  
 I. A. Scott B. Appleby, Jr.

*[Signature]* Witness  
 Louise J. Hopkins

*[Signature]* Robert K. Williams, Jr., Trustee

### ENGINEER'S CERTIFICATE

We hereby certify that the plan shown hereon is correct: that it is a subdivision of part of the land conveyed by Scott B. Appleby, widower, to Rivermass Corp. by deed dated February 26, 1954, and recorded in Liber 1897 at Folio 209 among the Land Record of Montgomery County, Maryland and that iron pipes marked thus ◦ and stones marked thus • are in place where indicated hereon.

Date: August 20, 1957.

MADDOX & HOPKINS

By: *[Signature]*  
 Page F Hopkins  
 Registered Professional Engineer  
 Md. No. 1585 and Land Surveyor

PART OF BLOCKS D, E, F, G & H  
**WESTWOOD**  
 MONTGOMERY COUNTY, MARYLAND  
 SCALE 1"=100' AUGUST, 1957

Prepared in the Office of  
 MADDOX & HOPKINS  
 CIVIL ENGINEERS  
 SILVER SPRING, MD.

Note: (1) For street dedication see Plat Book 55 - Plat 4456; Plat Book 51 Plat 3395; Plat Book 59 Plat 4860  
 (2) The area dedicated to public use is 123,279 sq. ft. - 2.830 Acres.

THE MARYLAND-NATIONAL CAPITAL PARK & PLANNING COMMISSION  
 MONTGOMERY COUNTY PLANNING BOARD

APPROVED: *[Signature]* October 2, 1957  
 Chairman

*[Signature]* Secretary Treasurer

M.-H. C. R. & P. C. RECORD FILE NO. 161-55

MONTGOMERY COUNTY CIRCUIT COURT (Subdivision Plats, MO) Plat 5026, MSA\_s1249\_012841. Date available 1957/10/15. Printed 09/19/2023.