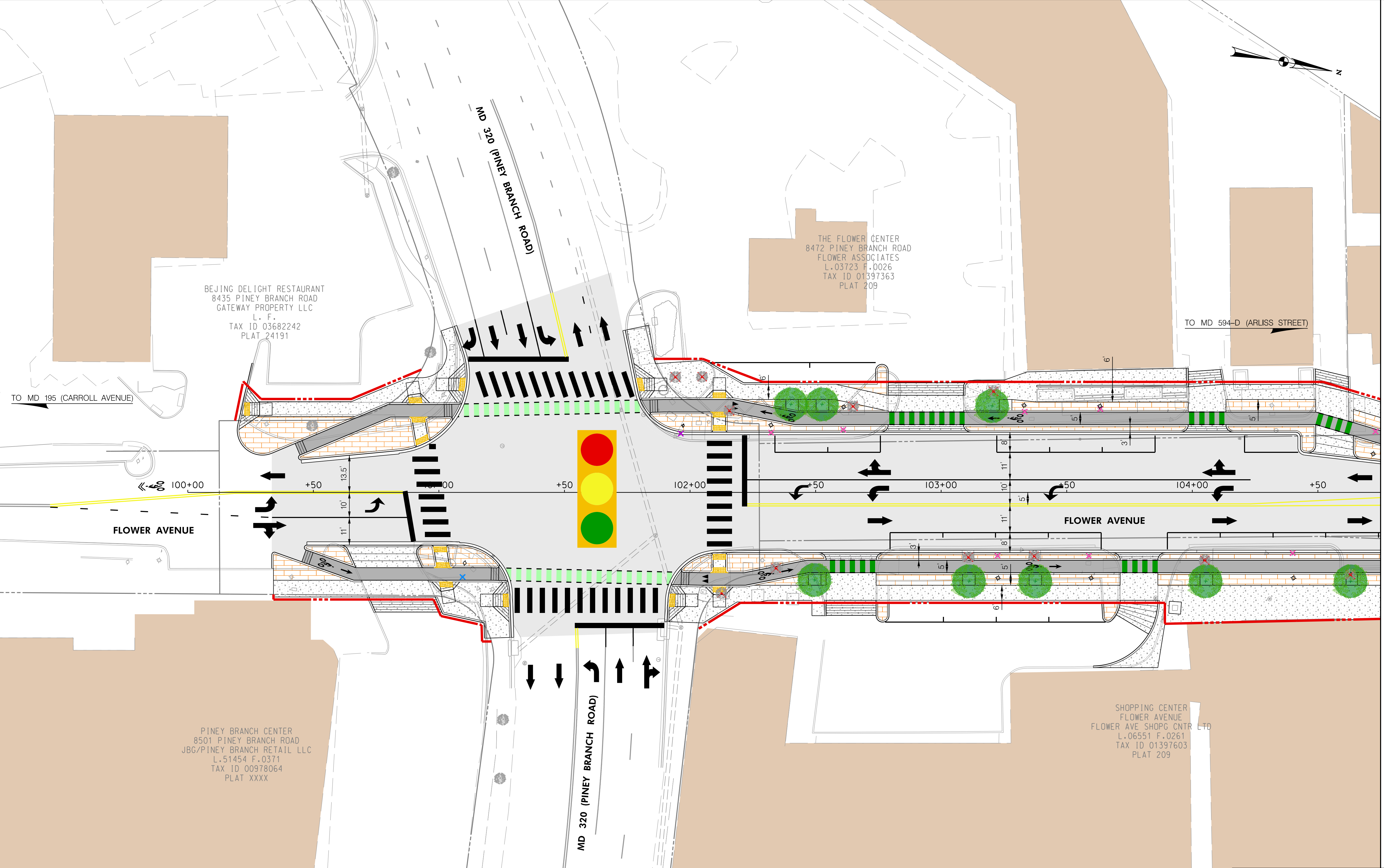


4/3/2023 \\us1527-f01\shared.projects\2026213116\700 CAD\702 Display\Public Meeting_01\Concept+ Plans\bhd-P001_FlowerAve_01.dgn

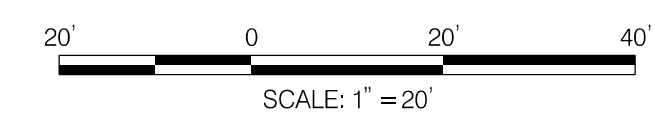


MATCH LINE STA. 104+75 - SEE SHEET PS-02

PS-01



LEGEND	
	PROP. DETECTABLE WARNING SURFACE
	PROP. CONCRETE
	PROP. ASPHALT PAVEMENT RESURFACING
	PROP. BRICK PAVERS
	PROP. BIKE LANES
	PROP. FLOATING BUS STOP
	BUILDING
	GREEN BIKE CONFLICT PAINT
	PROP. GEOMETRY
	PROP. PURPLE LINE IMPROVEMENTS
	EX. GEOMETRY
	PROP. RIGHT OF WAY LINE
	EX. RIGHT OF WAY LINE
	PROP. STREET LIGHT
	EX. STREET LIGHT TO BE REMOVED
	EX. STREET LIGHT TO REMAIN
	PROP. UTILITY POLE
	EX. UTILITY POLE TO BE REMOVED
	EX. UTILITY POLE TO REMAIN
	PROP. STREET TREE
	EX. STREET TREE TO BE REMOVED
	EX. STREET TREE TO REMAIN
	PROP. FIRE HYDRANT
	EX. FIRE HYDRANT TO BE REMOVED
	EX. FIRE HYDRANT
	EX. GAS VALVE
	EX. SANITARY SEWER MANHOLE
	EX. TELECOM MANHOLE
	EX. ELECTRIC MANHOLE
	EX. WATER VALVE
	EX. STORM DRAIN MANHOLE
	EX. TRAFFIC SIGNAL



DEPARTMENT OF TRANSPORTATION
DIVISION OF TRANSPORTATION ENGINEERING
MONTGOMERY COUNTY, MARYLAND

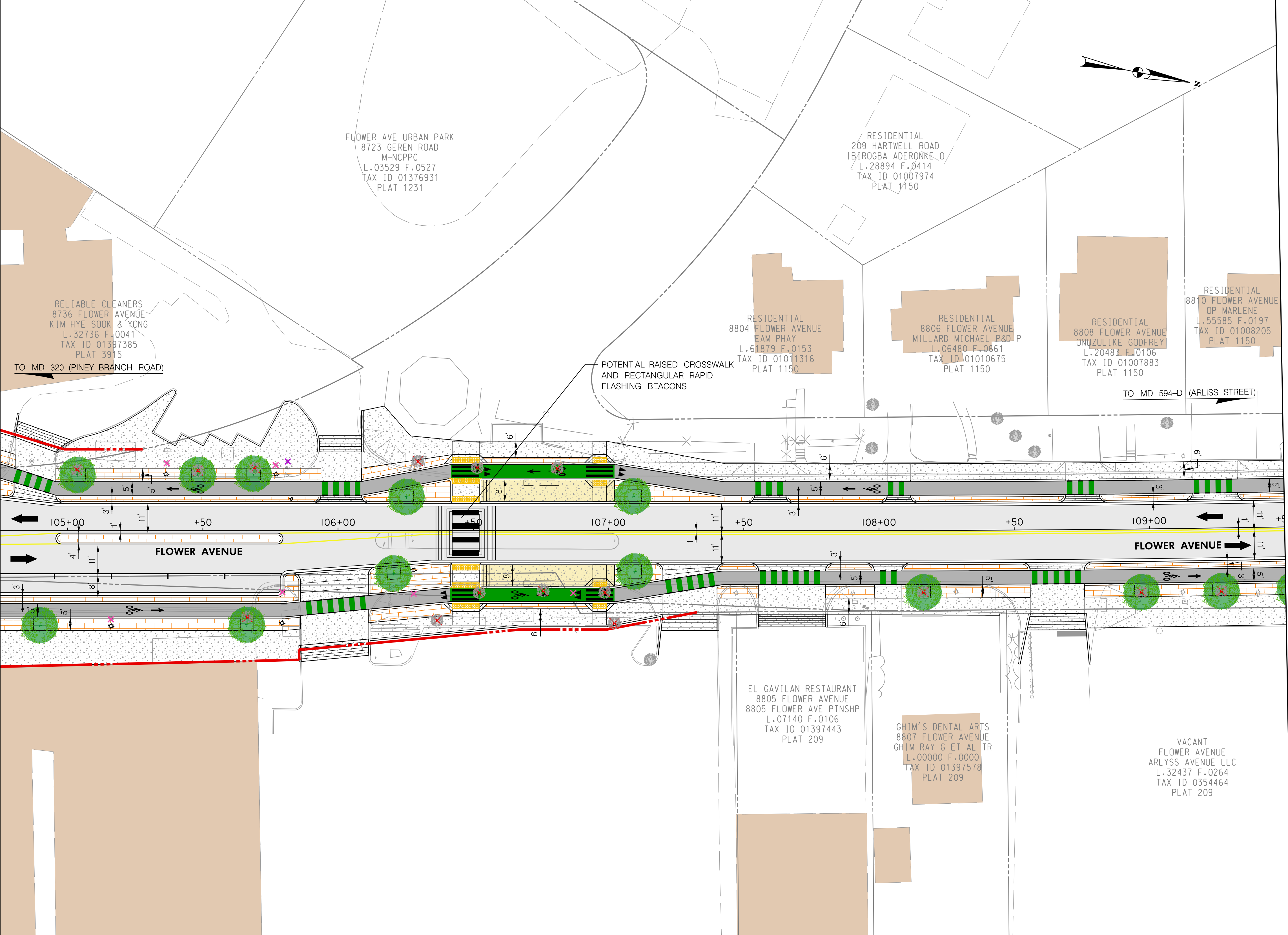
FLOWER AVENUE
SEPARATED BIKE LANES
CONCEPT - 1

SHEET 01 of 03

4/3/2023 \\us1527-f01\shared.projects\202621316\700 CAD\702 Display\Public Meeting_01\Concept Plans\bhd-P002.Flower Ave.01.dgn

MATCH LINE STA. 104+75 - SEE SHEET PS-01

MATCH LINE STA. 109+50 - SEE SHEET PS-03

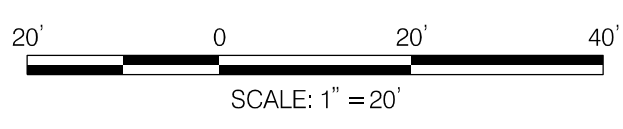


LEGEND

PROP. DETECTABLE WARNING SURFACE	PROP. GEOMETRY	EX. STREET LIGHT TO REMAIN	PROP. FIRE HYDRANT	EX. STORM DRAIN MANHOLE
PROP. CONCRETE	PROP. PURPLE LINE IMPROVEMTS	PROP. UTILITY POLE	EX. FIRE HYDRANT TO BE REMOVED	EX. TRAFFIC SIGNAL
PROP. ASPHALT PAVEMENT RESURFACING	EX. GEOMETRY	EX. UTILITY POLE TO BE REMOVED	EX. FIRE HYDRANT	
PROP. BRICK PAVERS	PROP. RIGHT OF WAY LINE	EX. UTILITY POLE TO REMIAN	EX. GAS VALVE	
PROP. BIKE LANES	EX. RIGHT OF WAY LINE	PROP. STREET TREE	EX. SANITARY SEWER MANHOLE	
PROP. FLOATING BUS STOP	PROP. STREET LIGHT	EX. STREET TREE TO BE REMOVED	EX. TELECOM MANHOLE	
BUILDING	EX. STREET LIGHT TO BE REMOVED	EX. STREET TREE TO REMAIN	EX. ELECTRIC MANHOLE	
GREEN BIKE CONFLICT PAINT			EX. WATER VALVE	

DEPARTMENT OF TRANSPORTATION
DIVISION OF TRANSPORTATION ENGINEERING
MONTGOMERY COUNTY, MARYLAND

FLOWER AVENUE
SEPARATED BIKE LANES
CONCEPT - 1

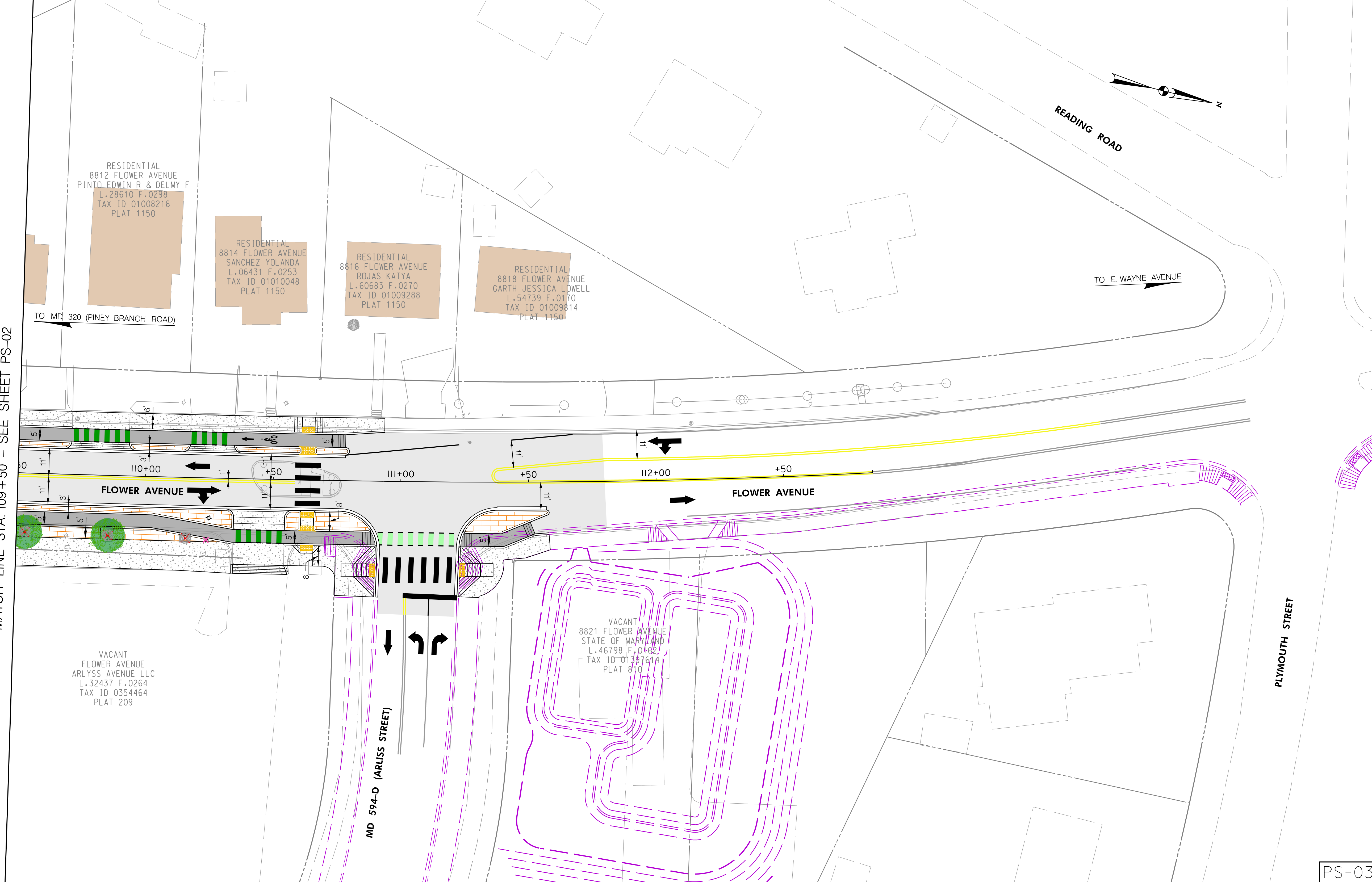


PS-02



4/3/2023 \\us1527-f01\shared\projects\2026213116\700 CADD\702 Display\Public Meeting_01\Concept\Plans\PHD-P003_FlowerAve_01.dgn

MATCH LINE STA. 109+50 - SEE SHEET PS-02



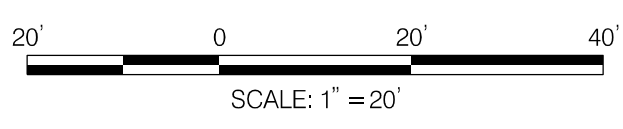
LEGEND

PROP. DETECTABLE WARNING SURFACE	PROP. GEOMETRY	EX. STREET LIGHT TO REMAIN	PROP. FIRE HYDRANT	EX. STORM DRAIN MANHOLE
PROP. CONCRETE	PROP. PURPLE LINE IMPROVEMTS	PROP. UTILITY POLE	EX. FIRE HYDRANT TO BE REMOVED	EX. TRAFFIC SIGNAL
PROP. ASPHALT PAVEMENT RESURFACING	EX. GEOMETRY	EX. UTILITY POLE TO BE REMOVED	EX. FIRE HYDRANT	
PROP. BRICK PAVERS	PROP. RIGHT OF WAY LINE	EX. UTILITY POLE TO REMIAN	EX. GAS VALVE	
PROP. BIKE LANES	EX. RIGHT OF WAY LINE	PROP. STREET TREE	EX. SANITARY SEWER MANHOLE	
PROP. FLOATING BUS STOP	PROP. STREET LIGHT	EX. STREET TREE TO BE REMOVED	EX. TELECOM MANHOLE	
BUILDING	EX. STREET LIGHT TO BE REMOVED	EX. STREET TREE TO REMAIN	EX. ELECTRIC MANHOLE	
GREEN BIKE CONFLICT PAINT			EX. WATER VALVE	

DEPARTMENT OF TRANSPORTATION
DIVISION OF TRANSPORTATION ENGINEERING
MONTGOMERY COUNTY, MARYLAND

FLOWER AVENUE
SEPARATED BIKE LANES
CONCEPT - 1

SHEET 03 of 03



PS-03