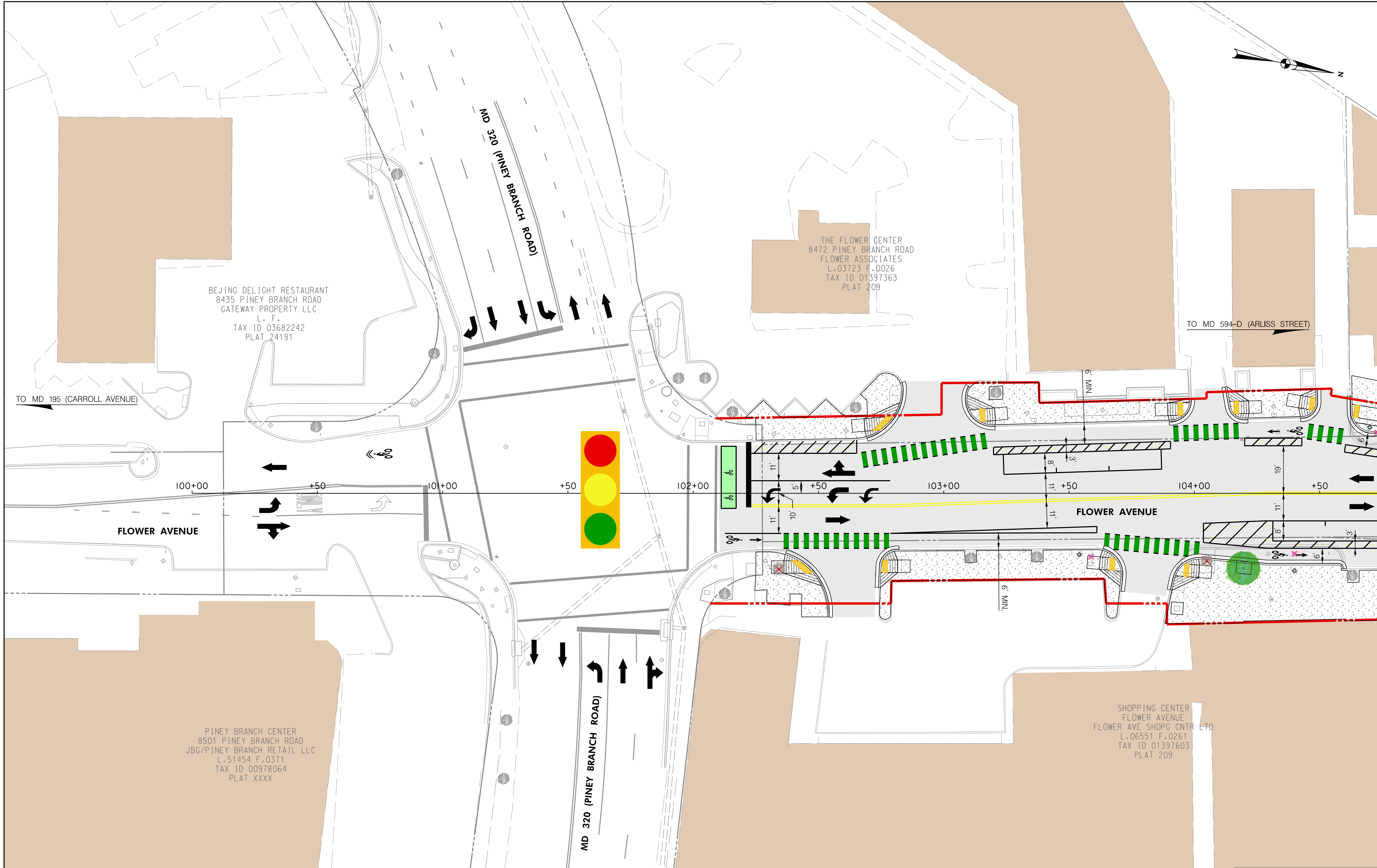


4/3/2023 \\us1527-f01\shared.projects\2026213116\700 CADD\702 Display\Public Meeting_01\Concept+ Plans\bhd-P001_FlowerAve_02.dgn



MATCH LINE STA. 104+75 - SEE SHEET PS-02

PS-01

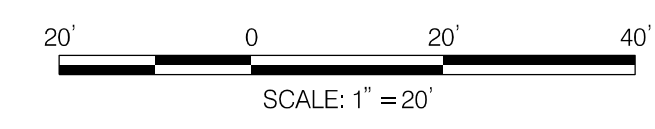


LEGEND			
	PROP. DETECTABLE WARNING SURFACE		PROP. GEOMETRY
	PROP. CONCRETE		PROP. PURPLE LINE IMPROVEMENTS
	PROP. ASPHALT PAVEMENT RESURFACING		EX. GEOMETRY
	EX. BUS STOP		PROP. RIGHT OF WAY LINE
	BUILDING		EX. RIGHT OF WAY LINE
	GREEN BIKE CONFLICT PAINT		PROP. STREET LIGHT
			EX. STREET LIGHT TO BE REMOVED
			PROP. STREET TREE
			EX. STREET TREE TO BE REMOVED
			EX. STREET TREE TO REMAIN
			EX. FIRE HYDRANT
			EX. STREET LIGHT TO REMAIN
			EX. UTILITY POLE TO REMAIN
			EX. GAS VALVE
			EX. SANITARY SEWER MANHOLE
			EX. TELECOM MANHOLE
			EX. ELECTRIC MANHOLE
			EX. WATER VALVE
			EX. STORM DRAIN MANHOLE
			EX. TRAFFIC SIGNAL

DEPARTMENT OF TRANSPORTATION
DIVISION OF TRANSPORTATION ENGINEERING
MONTGOMERY COUNTY, MARYLAND

FLOWER AVENUE
SEPARATED BIKE LANES
CONCEPT - 2

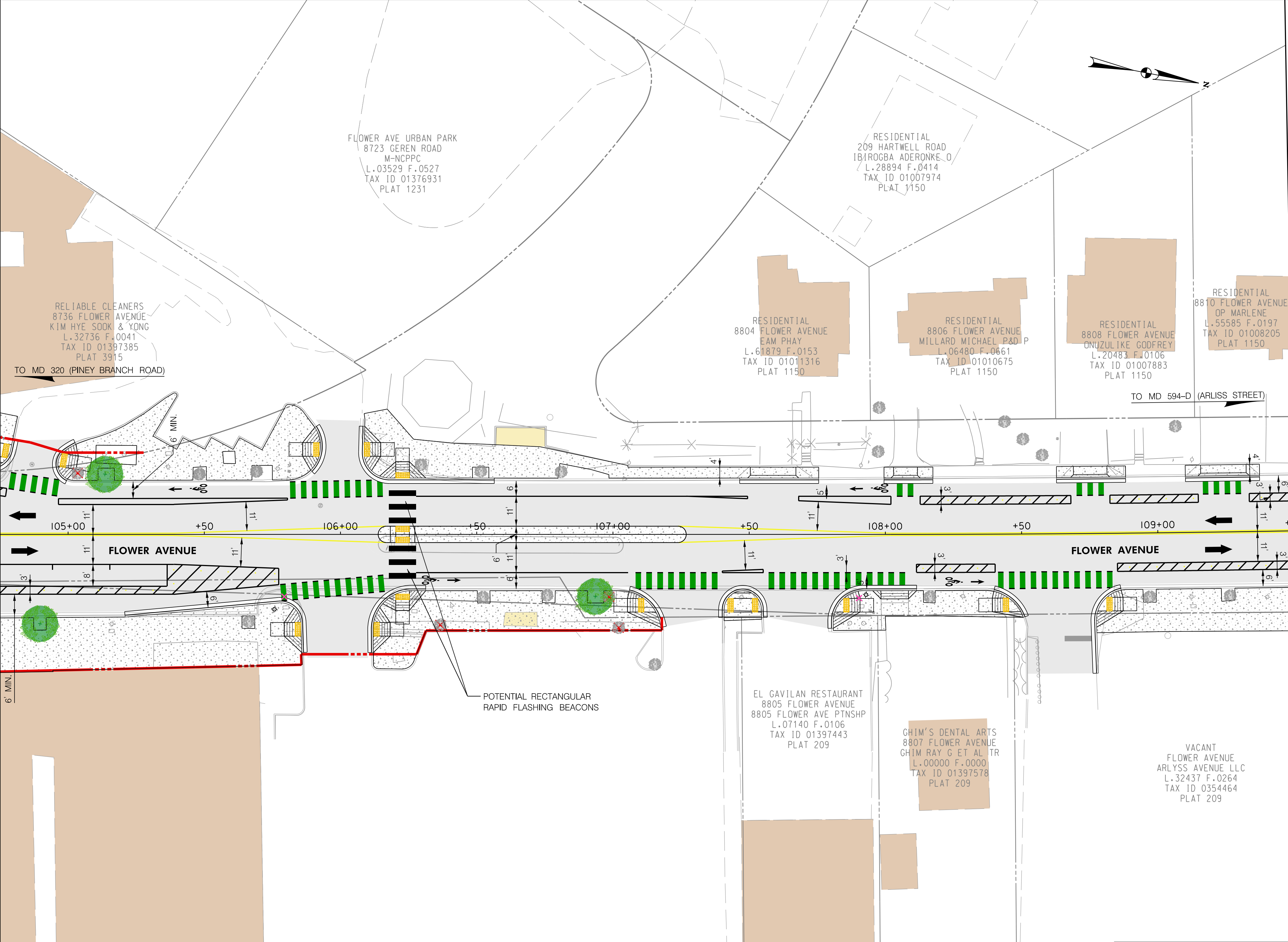
SHEET 01 of 03



4/3/2023 \\us1527-f01\shared.projects\2026213116\700 CADD\702 Display\Public Meeting_01\Concept\Plans\bhd-P002-Flower Ave_02.dgn

MATCH LINE STA. 104+75 - SEE SHEET PS-01

MATCH LINE STA. 109+50 - SEE SHEET PS-03

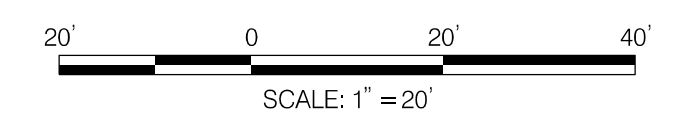


LEGEND			
	PROP. DETECTABLE WARNING SURFACE		PROP. GEOMETRY
	PROP. CONCRETE		PROP. PURPLE LINE IMPROVEMTS
	PROP. ASPHALT PAVEMENT RESURFACING		EX. GEOMETRY
	EX. BUS STOP		PROP. RIGHT OF WAY LINE
	BUILDING		EX. RIGHT OF WAY LINE
	GREEN BIKE CONFLICT PAINT		PROP. STREET LIGHT
	PROP. STREET TREE		EX. STREET LIGHT TO BE REMOVED
	EX. STREET LIGHT TO REMAIN		EX. UTILITY POLE TO REMIAN
	EX. STREET TREE TO BE REMOVED		PROP. STREET TREE
	EX. STREET TREE TO REMAIN		EX. GAS VALVE
	EX. FIRE HYDRANT		EX. SANITARY SEWER MANHOLE
	EX. TRAFFIC SIGNAL		EX. TELECOM MANHOLE
			EX. ELECTRIC MANHOLE
			EX. WATER VALVE
			EX. STORM DRAIN MANHOLE

DEPARTMENT OF TRANSPORTATION
DIVISION OF TRANSPORTATION ENGINEERING
MONTGOMERY COUNTY, MARYLAND

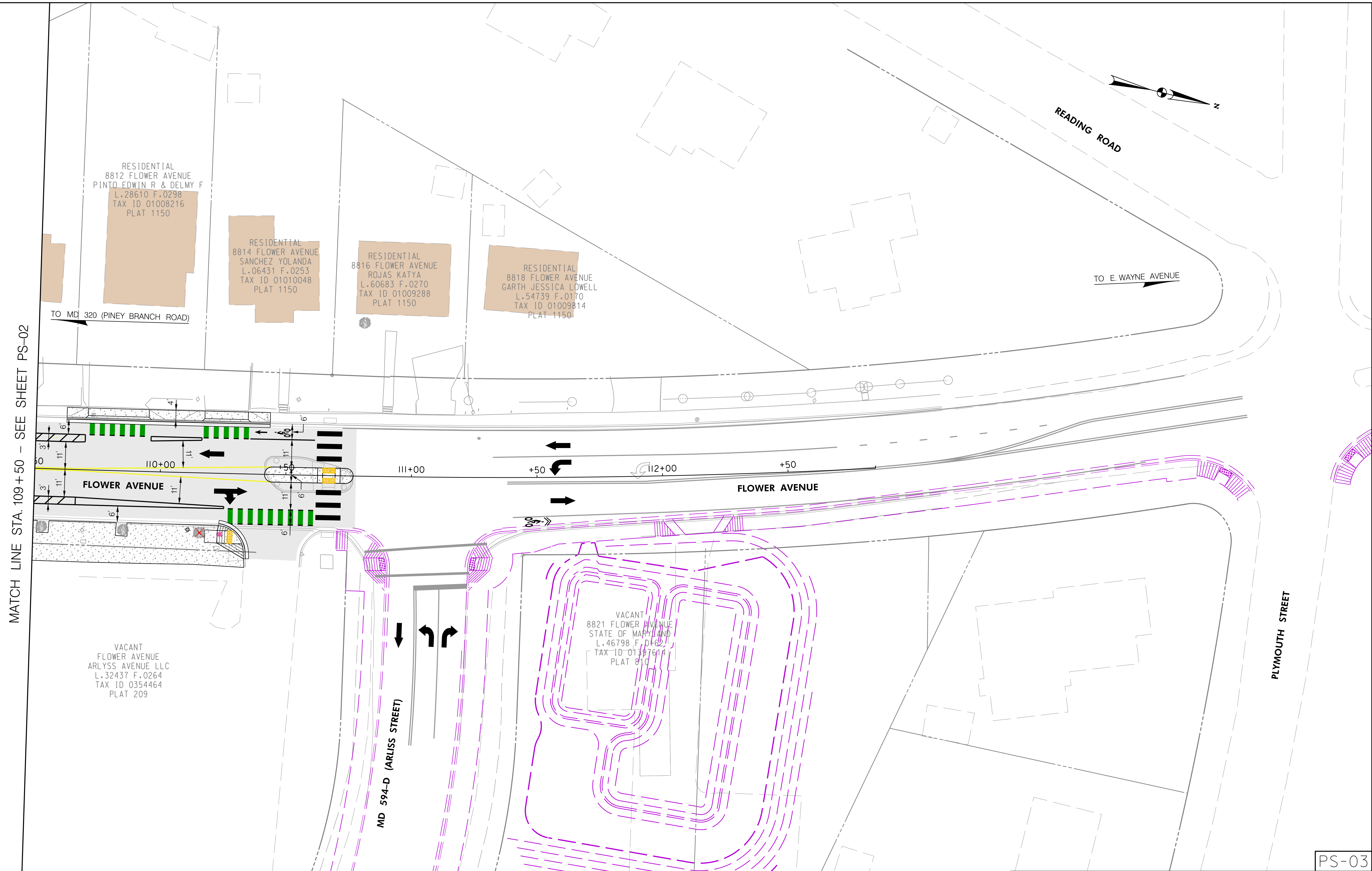
FLOWER AVENUE
SEPARATED BIKE LANES
CONCEPT - 2

SHEET 02 of 03



PS-02

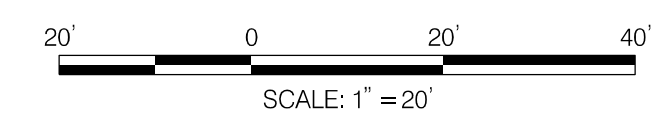
4/3/2023 \\us1527-f01\shared_projects\2026213116\700_CADD\702_Display\Public_Meeting_01\Concept_Plans\PHD-P003_FlowerAve_02.dgn



LEGEND			
	PROP. DETECTABLE WARNING SURFACE		PROP. GEOMETRY
	PROP. CONCRETE		PROP. PURPLE LINE IMPROVEMTS
	PROP. ASPHALT PAVEMENT RESURFACING		EX. GEOMETRY
	EX. BUS STOP		PROP. RIGHT OF WAY LINE
	BUILDING		EX. RIGHT OF WAY LINE
	GREEN BIKE CONFLICT PAINT		PROP. STREET LIGHT
			EX. STREET LIGHT TO BE REMOVED
			EX. STREET LIGHT TO REMAIN
			EX. UTILITY POLE TO REMIAN
			PROP. STREET TREE
			EX. STREET TREE TO BE REMOVED
			EX. STREET TREE TO REMAIN
			EX. FIRE HYDRANT
			EX. GAS VALVE
			EX. SANITARY SEWER MANHOLE
			EX. TELECOM MANHOLE
			EX. ELECTRIC MANHOLE
			EX. WATER VALVE
			EX. STORM DRAIN MANHOLE
			EX. TRAFFIC SIGNAL

DEPARTMENT OF TRANSPORTATION
DIVISION OF TRANSPORTATION ENGINEERING
MONTGOMERY COUNTY, MARYLAND

FLOWER AVENUE
SEPARATED BIKE LANES
CONCEPT - 2



PS-03

SHEET 03 of 03