

Kenwood Park Community Sidewalk Proposal

Public Hearing Record

Wednesday, March 1, 2023, at 7:00 p.m.

CONTENTS

Exhibit 1	Office of Management & Budget Sidewalk Program Minor Projects P506747
Exhibit 2	Project Vicinity Map 1
Exhibit 3	Public Right-of-Way Construction Impacts
Exhibit 4	Original and Revised Tree Reports
Exhibit 5	Montgomery County Government Press Release Circulated and Published on Twitter, Reddit, Post Social, Mastodon and NextDoor Social Media Websites on February 6th and 28th, 2023; Washington Times Newspaper and Online Advertisement Circulated Feb. 22nd and 28th, 2023; and highlighted in the MyMC Daily Newsletter on March 1, 2023
Exhibit 6	Written Testimony Supporting the Proposal
Exhibit 7	Written Testimony Opposing the Proposal
Exhibit 8	List of Attendees at Public Hearing
Exhibit 9	Public Hearing Transcript

Exhibit 1

Office of Management & Budget
Sidewalk Program Minor Projects P506747



Sidewalk Program Minor Projects

(P506747)

Category	Transportation	Date Last Modified	01/10/22
SubCategory	Pedestrian Facilities/Bikeways	Administering Agency	Transportation
Planning Area	Countywide	Status	Ongoing

EXPENDITURE SCHEDULE (\$000s)

Cost Elements	Total	Thru FY21	Est FY22	Total 6 Years	FY 23	FY 24	FY 25	FY 26	FY 27	FY 28	Beyond 6 Years
Planning, Design and Supervision	12,362	6,939	605	4,818	1,017	520	761	840	840	840	-
Land	2,437	2,268	11	158	10	6	25	25	46	46	-
Site Improvements and Utilities	340	240	10	90	20	14	14	14	14	14	-
Construction	28,453	9,041	2,520	16,892	3,297	2,374	2,200	3,621	2,700	2,700	-
TOTAL EXPENDITURES	43,592	18,488	3,146	21,958	4,344	2,914	3,000	4,500	3,600	3,600	-

FUNDING SCHEDULE (\$000s)

Funding Source	Total	Thru FY21	Est FY22	Total 6 Years	FY 23	FY 24	FY 25	FY 26	FY 27	FY 28	Beyond 6 Years
G.O. Bonds	43,516	18,412	3,146	21,958	4,344	2,914	3,000	4,500	3,600	3,600	-
State Aid	76	76	-	-	-	-	-	-	-	-	-
TOTAL FUNDING SOURCES	43,592	18,488	3,146	21,958	4,344	2,914	3,000	4,500	3,600	3,600	-

APPROPRIATION AND EXPENDITURE DATA (\$000s)

Appropriation FY 23 Request	4,344	Year First Appropriation	FY67
Appropriation FY 24 Request	2,914	Last FY's Cost Estimate	36,392
Cumulative Appropriation	21,634		
Expenditure / Encumbrances	18,623		
Unencumbered Balance	3,011		

PROJECT DESCRIPTION

This pedestrian access improvement program provides sidewalks on County-owned roads and some State-maintained roadways. Some funds from this project will go to support the Renew Montgomery program. The Department of Transportation maintains an official list of all outstanding sidewalk requests. Future projects are evaluated and selected from this list, which is continually updated with new requests. In addition, projects identified by the Citizens' Advisory Boards are placed on the list. One aspect of this project will focus on improving pedestrian walkability by creating a safer walking environment, utilizing selected engineering technologies, and ensuring Americans with Disabilities Act of 1990 (ADA) compliance.

COST CHANGE

Cost change due to the addition of FY 27 and FY 28 to this ongoing Level of Effort project.

PROJECT JUSTIFICATION

In addition to connecting existing sidewalks, these projects increase pedestrian safety and facilitate walking to: Metrorail stations, bus stops, shopping and medical centers, employment, recreational, and school sites. This program also complements and augments the bikeways that are included in road projects.

OTHER

Projects originate from private citizens, citizen associations, and public agencies. Projects are evaluated and scheduled using sidewalk prioritization procedures. The project will help the County achieve its Vision Zero goals to reduce deaths and serious injuries on County Roadways to zero by 2030.

In accordance with the FY22-23 Vision Zero Work Plan, DOT is reviewing the program intake process to ensure sidewalk requests are prioritized based on equity, safety, need, and data.

DISCLOSURES

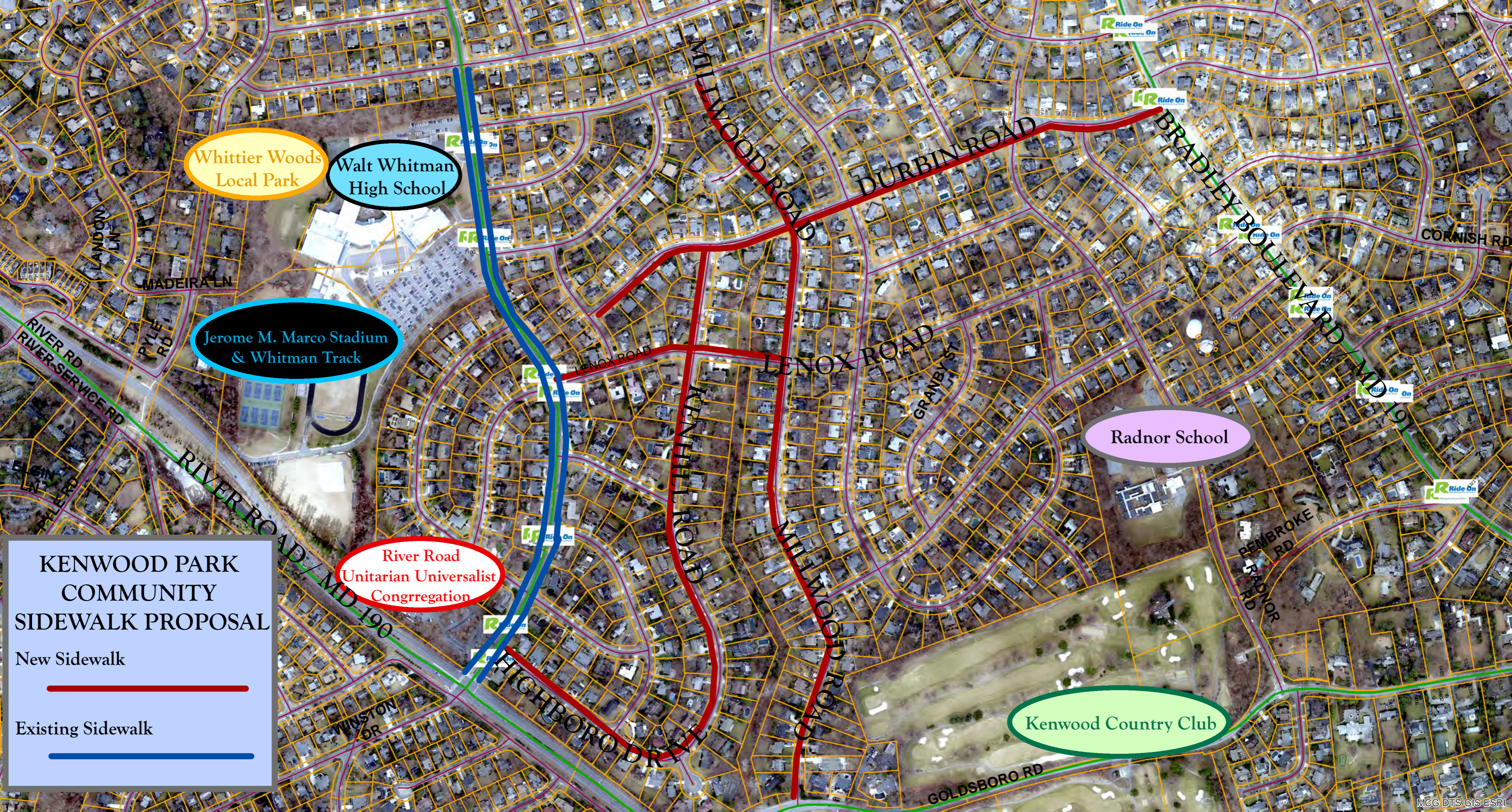
A pedestrian impact analysis has been completed for this project. Expenditures will continue indefinitely. The County Executive asserts that this project conforms to the requirement of relevant local plans, as required by the Maryland Economic Growth, Resource Protection and Planning Act.

COORDINATION

Renew Montgomery Program, Maryland-National Capital Park and Planning Commission, Maryland DOT State Highway Administration, Montgomery County Public Schools, Washington Metropolitan Area Transit Authority, Sidewalk and Infrastructure Revitalization , Maryland Mass Transit Administration, Montgomery County Pedestrian Safety Advisory Committee, Commission on People with Disabilities

Exhibit 2

Project Vicinity Map



Whittier Woods
Local Park

Walt Whitman
High School

Jerome M. Marco Stadium
& Whitman Track

River Road
Unitarian Universalist
Congregation

Radnor School

Kenwood Country Club

**KENWOOD PARK
COMMUNITY
SIDEWALK PROPOSAL**

New Sidewalk

Existing Sidewalk

Exhibit 3

Public Right of Way Construction Impacts

Durbin Road

Public Right-of-Way Construction Impacts

Side: South (even-numbered homes)
Limits: Bradley Boulevard to Hopewood Street
Sidewalk Width: 5-Ft
Sidewalk Material: Concrete
Road Width: 26-Ft Curb to Curb

ADDRESS	CONSTRUCTION IMPACTS
Durbin Road at Hopewood Street	Construct an ADA ramp.
6128 Durbin Road, work on the side of the property along Durbin Road	Construct a 5-ft-wide concrete sidewalk with a 0 to 3-ft variable greenspace. Remove and replace the concrete driveway apron. Remove the existing slate leadwalk within County's public right of way as needed and replace with concrete. Transition sidewalk behind utility pole, #764417-840840. Relocate guide wires.
6124 Durbin Road	Construct a 5-ft-wide concrete sidewalk with a 0 to 3-ft variable greenspace. Remove and replace the existing concrete driveway apron.
6120 Durbin Road	Construct a 5-ft-wide concrete sidewalk with a 0 to 3-ft variable greenspace. Remove and replace the existing concrete driveway apron. Remove bushes and groundcover landscaping within County's public right of way as needed for sidewalk installation.
6116 Durbin Road	Construct a 5-ft-wide concrete sidewalk with a 0 to 3-ft variable greenspace. Remove and replace the existing concrete driveway apron. Remove two Zelkova trees, 4 and 3-inches in diameter; replacement trees will be planted. May need to adjust the Manhole cover.
6112 Durbin Road	Construct a 5-ft-wide concrete sidewalk with a 0 to 3-ft variable greenspace. Remove and replace the existing concrete driveway apron. Remove the existing slate leadwalk within County's public right of way and replace with concrete. Remove three trees, one 2-inches in diameter species unknown, one 14-inch in diameter Cherry tree and one 22-inch in diameter Crabapple tree that is in poor condition; replacement trees will be planted. Remove bushes and groundcover landscaping within County's public right of way as needed for sidewalk installation.

PLEASE NOTE: The above impacts are based on a preliminary investigation and are subject to change at any time as field conditions warrant.

Durbin Road, SOUTH

ADDRESS	CONSTRUCTION IMPACTS
7012 Kenhill Road, work on the side of the property along Durbin Road	Construct a 5-ft-wide concrete sidewalk with a 0 to 3-ft variable greenspace. Remove and replace the existing concrete driveway apron. Remove eight trees, four Crape Myrtle trees 13, 9, 9 and 8 multi-stem, two Oak trees 6 and 13-inches in diameter, one 13-inch in diameter Magnolia tree and one 7-inch in diameter Linden tree; replacement trees will be planted. Remove bushes and groundcover landscaping within County's public right of way as needed for sidewalk installation.
Durbin Road at Kenhill Road	Construct two ADA ramps.
7017 Kenhill Road, work on the side of the property along Durbin Road	Construct a 5-ft-wide concrete sidewalk with a 0 to 3-ft variable greenspace. Remove and replace the existing concrete driveway apron. Remove shrubs, bushes and groundcover landscaping within County's public right of way as needed for sidewalk installation.
6004 Durbin Road	Construct a 5-ft-wide concrete sidewalk with a 0 to 3-ft variable greenspace. Remove and replace the existing concrete driveway apron. Transition sidewalk behind utility pole, #765418-560130. Relocate guide wires. Remove one 14-inch diameter Crabapple tree; replacement trees will be planted.
7108 Millwood Road, work on the side of the property along Durbin Road	Construct a 5-ft-wide concrete sidewalk with a 0 to 3-ft variable greenspace. Remove and replace the existing concrete driveway apron. Remove five Cherry trees, 12, 12, 7, 14, and 24-inches in diameter; replacement trees will be planted. Adjust the storm drain inlet top.
Durbin Road at Millwood Road	Construct two A.D.A. ramps. One ramp will need to be constructed around the utility pole #765418-700190.
7113 Millwood Road, work on the side of the property along Durbin Road	Construct a 5-ft-wide concrete sidewalk with a 0 to 3-ft variable greenspace. Transition sidewalk in front of utility pole, #765418-820230. Remove and replace the existing concrete driveway apron. Remove shrubs, bushes and groundcover landscaping within County's public right of way as needed for sidewalk installation. Remove one, nine multi-stem Crape Myrtle tree; replacement trees will be planted. Adjust the storm drain inlet top. Adjust the in-ground green irrigation control box.

PLEASE NOTE: The above impacts are based on a preliminary investigation and are subject to change at any time as field conditions warrant.

Durbin Road, SOUTH

ADDRESS	CONSTRUCTION IMPACTS
5900 Durbin Road, work on the side of the property along Durbin Road	Construct a 5-ft-wide concrete sidewalk with a 0 to 3-ft variable greenspace. Remove and replace the existing concrete and asphalt driveway apron. Remove two Cherry trees, 8 and 23-inches in diameter; replacement trees will be planted. Relocate the 15 MPH Speed Bump sign.
Durbin Road at Marbury Road	Construct two ADA ramps.
7109 Marbury Road, work on the side of the property along Durbin Road	Construct a 5-ft-wide concrete sidewalk with a 0 to 3-ft variable greenspace. The sidewalk will run in front of the utility pole, #765418-990300. Remove one 31-inch in diameter Cherry tree; replacement trees will be planted. Adjust the storm drain inlet top.
5824 Durbin Road	Construct a 5-ft-wide concrete sidewalk with a 0 to 3-ft variable greenspace. Remove and replace the existing concrete driveway apron. Transition sidewalk in front of utility pole, #766418-180370. Remove two trees, one 11-inch in diameter Goldenrain tree and one 7-inch in diameter Cherry tree; replacement trees will be planted.
5820 Durbin Road	Construct a 5-ft-wide concrete sidewalk with a 0 to 3-ft variable greenspace. Remove and replace the existing concrete driveway apron. Remove one 12-inch in diameter Goldenrain tree; replacement trees will be planted. Adjust the storm drain inlet top.
5816 Durbin Road	Construct a 5-ft-wide concrete sidewalk with a 0 to 3-ft variable greenspace. Remove and replace the existing concrete driveway apron. Transition sidewalk in front of utility pole. (Pole is not numbered).
5812 Durbin Road	Construct a 5-ft-wide concrete sidewalk with a 0 to 3-ft variable greenspace. Remove and replace the two existing concrete driveway aprons. Remove two trees, one 10-inch in diameter Goldenrain tree and one 20-inch in diameter Cherry tree; replacement trees will be planted.
5808 Durbin Road	Construct a 5-ft-wide concrete sidewalk with a 0 to 3-ft variable greenspace. Remove and replace the existing concrete driveway apron. Remove two Goldenrain trees, 11 and 13-inches in diameter; replacement trees will be planted.
5804 Durbin Road	Construct a 5-ft-wide concrete sidewalk with a 0 to 3-ft variable greenspace. Remove and replace the existing concrete driveway apron. Remove the existing slate leadwalk within the County's public right of way and replace with concrete. Transition sidewalk in front of utility pole, #766418-510510. Remove two trees, one 10.5 multi-stem Crape Myrtle tree and one 4.5-inch in diameter Serviceberry tree; replacement trees will be planted. Remove bushes and groundcover landscaping within County's public right of way as needed for sidewalk installation. Adjust the storm drain inlet top.

PLEASE NOTE: The above impacts are based on a preliminary investigation and are subject to change at any time as field conditions warrant.

Durbin Road, SOUTH

ADDRESS	CONSTRUCTION IMPACTS
5800 Durbin Road	<p>Construct a 5-ft-wide concrete sidewalk with a 0 to 3-ft variable greenspace. Remove and replace the existing concrete driveway apron. Remove and replace the existing concrete leadwalk within County's public right of way as needed. Remove one 13-inch in diameter Linden tree; replacement trees will be planted. Adjust the Gas valve.</p>
Durbin Road at Radnor Road	<p>Construct two ADA ramps.</p>
5724 Durbin Road	<p>Construct a 5-ft-wide concrete sidewalk with a 0 to 3-ft variable greenspace. Remove the existing slate leadwalk within County's public right of way as needed and replace with concrete. Remove two trees, one 11-inch in diameter Oak tree and one 25-inch in diameter Cherry tree that is in poor condition; replacement trees will be planted. Adjust the storm drain inlet top.</p>
5720 Durbin Road	<p>Construct a 5-ft-wide concrete sidewalk with a 0 to 3-ft variable greenspace. Remove and replace the existing concrete driveway apron. Adjust the storm drain inlet top.</p>
7316 Durbin Terr, work on the side of the property along Durbin Road	<p>Construct a 5-ft-wide concrete sidewalk with a 0 to 3-ft variable greenspace. Remove the existing asphalt driveway apron and replace with concrete. The sidewalk will run in front of the utility pole, #766418-9367. Adjust the Water meter.</p>
Durbin Road at Durbin Terrace	<p>Construct two ADA ramps.</p>
5710 Durbin Road	<p>Construct a 5-ft-wide concrete sidewalk with a 0 to 3-ft variable greenspace. Remove the existing slate leadwalk within County's public right of way and replace with concrete. Transition sidewalk behind utility pole, #767418-2067. Relocate guide wires.</p>
5706 Durbin Road	<p>Construct a 5-ft-wide concrete sidewalk with a 0 to 3-ft variable greenspace. Remove and replace two concrete driveway aprons. Transition sidewalk behind utility pole, #767418-3068. Remove landscaping within County's public right of way as needed for sidewalk installation.</p>
5632 Bradley Blvd, work on the side of the property along Durbin Road	<p>Construct a 5-ft-wide concrete sidewalk with a 0 to 3-ft variable greenspace. Remove and replace the existing concrete driveway apron. Remove and replace the existing concrete leadwalk within County's public right of way. Relocate the WSSC Air Valve Vent control box. Relocate the Stop sign and the Durbin Road and Bradley Blvd Street signs.</p>
Durbin Road at Bradley Boulevard	<p>Construction A.D.A. compliant ramp.</p>

PLEASE NOTE: The above impacts are based on a preliminary investigation and are subject to change at any time as field conditions warrant.

Lenox Road

Public Right-of-Way Construction Impacts

Side: **North** (odd-numbered homes)
Limits: Millwood Road to Whittier Blvd
Sidewalk Width: 5-Ft
Sidewalk Material: Concrete
Road Width: 26-Ft Curb to Curb

ADDRESS	CONSTRUCTION IMPACTS
Lenox Road at Millwood Road	Construct an ADA ramp.
7000 Millwood Road, work on the side of the property along Lenox Road	Construct a 5-ft-wide concrete sidewalk with a 0 to 3-ft variable greenspace. Remove the slate leadwalk within County's public right of way and replace with concrete. Remove landscaping and rocks within County's public right of way as needed for sidewalk installation.
County Easement	Construct a 5-ft-wide concrete sidewalk with a 0 to 3-foot variable greenspace. Transition sidewalk behind storm drain inlet top. Remove three trees, two 18-inch in diameter Black Locust trees and one 26-inch in diameter White Pine tree; replacement trees will be planted.
7001 Kenhill Road, work on the side of the property along Lenox Road	Construct a 5-ft-wide concrete sidewalk with a 0 to 3-foot variable greenspace. Remove and replace the existing concrete driveway apron. Relocate the Stop sign, Lenox Road and Kenhill Road street signs.
Lenox Road at Kenhill Road	Construct two A.D.A. compliant ramps, one around the utility pole #765417-220600.
7000 Kenhill Road, work on the side of the property along Lenox Road	Construct a 5-ft-wide concrete sidewalk with a 0 to 3-foot variable greenspace. Remove and replace the existing concrete driveway apron.
6105 Lenox Road	Construct a 5-ft-wide concrete sidewalk with a 0 to 3-foot variable greenspace. A retaining wall may be needed due to grade and elevation changes of the property. Remove and replace the existing concrete driveway apron. Adjust the storm drain inlet top.
6109 Lenox Road	Construct a 5-ft-wide concrete sidewalk with a 0 to 3-foot variable greenspace. Remove and replace the existing concrete driveway apron. Remove two Pin Oak trees, 29 and 30-inches in diameter; replacement trees will be planted.

PLEASE NOTE: The above impacts are based on a preliminary investigation and are subject to change at any time as field conditions warrant.

Lenox Road, NORTH

ADDRESS	CONSTRUCTION IMPACTS
7001 Hopewood Street, work on the side of the property along Lenox Road	Construct a 5-ft-wide concrete sidewalk with a 0 to 3-foot variable greenspace.
Lenox Road at Hopewood Street	Construct two ADA ramps.
7000 Hopewood Street, work on the side of the property along Lenox Road	Construct a 5-ft-wide concrete sidewalk with a 0 to 3-foot variable greenspace. Remove and replace the existing concrete driveway apron. Relocate in-ground basketball hoop. May need to adjust the storm drain inlet top. Adjust Water meter. Remove four Crape Myrtle trees with 12 multi-stems each; replacement trees will be planted.
7001 Whittier Blvd, work on the side of the property along Lenox Road	Construct a 5-ft-wide concrete sidewalk with a 0 to 3-foot variable greenspace and tie into the existing sidewalk at the intersection of Lenox Road and Whittier Blvd. Remove and replace the existing ramp at the intersection to make ADA compliant.

PLEASE NOTE: The above impacts are based on a preliminary investigation and are subject to change at any time as field conditions warrant.

Millwood Road

Public Right-of-Way Construction Impacts

Side: West (even-numbered side)

Limits: Plainview Road to Goldsboro Road/MD 614

Sidewalk Width: 5-Ft

Sidewalk Material: Concrete

Road Width: 26-Ft Curb to Curb

ADDRESS	CONSTRUCTION IMPACTS
Millwood Road at Plainview Road	Construct an ADA ramp.
7312 Millwood Road	Construct a 5-ft wide concrete sidewalk with a 0 to 3-ft variable greenspace. Remove the existing slate leadwalk within County's public right of way as needed and replace with concrete. The sidewalk will run in front of the utility pole, #765418-290720. Remove four Sugar Maple trees, 12, 18, 21 and 22-inches in diameter; replacement trees will be planted. Remove bushes and groundcover landscaping as needed for sidewalk installation.
7308 Millwood Road	Construct a 5-ft wide concrete sidewalk with a 0 to 3-ft variable greenspace. Remove and replace the existing concrete driveway apron. Remove the existing slate leadwalk within the County's public right of way as needed and replace with concrete. Remove bushes and groundcover landscaping within County's public right of way as needed for sidewalk installation. Remove one 16-inch in diameter Cherry tree; replacement trees will be planted.
7304 Millwood Road	Construct a 5-ft wide concrete sidewalk with a 0 to 3-ft variable greenspace. Remove and replace the existing concrete driveway apron. Remove the existing slate leadwalk within the County's public right of way as needed and replace with concrete. The sidewalk will run behind the utility pole, #765418-3857. The guide wires may need to be relocated. Adjust the Manhole cover. Remove one 19-inch in diameter Cherry tree; replacement trees will be planted.
7228 Millwood Court, work on the side of the property along Millwood Road	Construct a 5-ft wide concrete sidewalk with a 0 to 3-ft variable greenspace. Remove and replace the existing concrete driveway apron. Remove the existing slate lead walk as needed and replace with concrete. Adjust the storm drain inlet top. Remove four trees, one 18-inch in diameter Linden tree, one 8-inch in diameter Swamp White Oak tree and two Redbud trees, 7 and 9-inches in diameter; replacement trees will be planted.
Millwood Road at Millwood Court	Construct two ADA ramps.

PLEASE NOTE: The above impacts are based on a preliminary investigation and are subject to change at any time as field conditions warrant.

Millwood Road, WEST

ADDRESS	CONSTRUCTION IMPACTS
7208 Millwood Road	Construct a 5-ft wide concrete sidewalk with a 0 to 3-ft variable greenspace. Remove the existing slate leadwalk within County's public right of way as needed and replace with concrete.
7204 Millwood Road	Construct a 5-ft wide concrete sidewalk with a 0 to 3-ft variable greenspace. Remove and replace the existing concrete driveway apron. Remove the existing slate leadwalk within County's public right of way as needed and replace with concrete. Adjust the storm drain inlet top. Remove two trees, one 32-inch in diameter Magnolia and one 24-inch in diameter White Pine; replacement trees will be planted.
7200 Millwood Road	Construct a 5-ft wide concrete sidewalk with a 0 to 3-ft variable greenspace. Remove the existing slate leadwalk within County's public right of way as needed and replace with concrete. Adjust the storm drain inlet top. Relocate the Stop sign and the Millwood Road and Durbin Road street signs. Remove two Linden trees, 20 and 21-inches in diameter; replacement trees will be planted.
Millwood Road at Durbin Road	Construct two ADA ramps.
7108 Millwood Road	Construct a 5-ft wide concrete sidewalk with a 0 to 3-ft variable greenspace. Remove and replace the two existing concrete driveway aprons. Remove five Cherry trees, 24, 14, 7, 12 and 12-inches in diameter; replacement trees will be planted. Remove bushes and landscaping rocks within County's public right of way as needed for sidewalk installation.
7104 Millwood Road	Construct a 5-ft wide concrete sidewalk with a 0 to 3-ft variable greenspace. Remove and replace the existing concrete driveway apron. Remove bushes and groundcover landscaping within County's public right of way as needed for sidewalk installation. Remove two trees, one 28-inch in diameter Cherry tree and one 12-inch in diameter Red Maple tree; replacement trees will be planted.
7100 Millwood Road	Construct a 5-ft wide concrete sidewalk with a 0 to 3-ft variable greenspace. Remove and replace the two existing concrete driveway aprons. Remove hedges within County's public right of way as needed for sidewalk installation. Relocate the yellow Traffic Circle sign.
7008 Millwood Road	Construct a 5-ft wide concrete sidewalk with a 0 to 3-ft variable greenspace. Remove and replace the existing concrete driveway apron. Remove one 2-inch in diameter Yellowwood tree; replacement trees will be planted.

PLEASE NOTE: The above impacts are based on a preliminary investigation and are subject to change at any time as field conditions warrant.

Millwood Road, WEST

ADDRESS	CONSTRUCTION IMPACTS
7004 Millwood Road	<p>Construct a 5-ft wide concrete sidewalk with a 0 to 3-ft variable greenspace. Remove and replace the existing concrete driveway apron. The sidewalk will run behind the utility pole, #765417-630570. The guide wires will need to be relocated. Remove bushes and landscaping rocks within County's public right of way as needed for sidewalk installation.</p>
7000 Millwood Road	<p>Construct a 5-ft wide concrete sidewalk with a 0 to 3-ft variable greenspace. Remove and replace the existing concrete driveway apron. Remove bushes, groundcover landscaping and landscaping rocks within County's public right of way as needed for sidewalk installation. Remove 13 trees, one 6-inch in diameter Cherry tree, one 5-inch in diameter Mulberry tree, nine Spruce trees that are in poor condition, 12, 8, 10, 11, 10, 10, 10, 14 and 15-inches in diameter, and two Cherry trees 7 and 5.5-inches in diameter; replacement trees will be planted.</p>
Millwood Road at Lenox Road	<p>Construct two ADA ramps, one of which will need to be constructed around utility pole #765417-610510.</p>
6000 Lenox Road, work on the side of the property along Millwood Road	<p>Construct a 5-ft-wide concrete sidewalk with a 0 to 3-ft variable greenspace. Remove and replace the existing concrete driveway apron. Remove two bushes within County's public right of way to allow for sidewalk installation. Adjust the Water meter.</p>
6920 Millwood Road	<p>Construct a 5-ft-wide concrete sidewalk with a 0 to 3-ft variable greenspace. Remove and replace the existing concrete driveway apron. Remove the existing brick leadwalk within County's public right of way and replace with concrete. The sidewalk will run behind the utility pole, #765417-590350. Remove one 17-inch in diameter Cherry tree; replacement trees will be planted.</p>
6916 Millwood Road	<p>Construct a 5-ft-wide concrete sidewalk with a 0 to 3-ft variable greenspace. Remove the existing asphalt driveway apron and replace with concrete. Remove the existing slate leadwalk within County's public right of way and replace with concrete. Remove groundcover landscaping within County's public right of way as needed for sidewalk installation. Remove one 20-inch diameter Cherry tree; replacement trees will be planted.</p>
6912 Millwood Road	<p>Construct a 5-ft-wide concrete sidewalk with a 0 to 3-ft variable greenspace. Remove and replace the existing concrete driveway apron. Remove the existing slate leadwalk within the County's public right of way as needed and replace with concrete. The sidewalk will run behind the utility pole, #765417-580190. Remove bushes and groundcover landscaping within County's public right of way as needed for sidewalk installation. Remove two trees, one 13-inch diameter Crabapple tree and one 8-inch diameter Magnolia tree; replacement trees will be planted.</p>

PLEASE NOTE: The above impacts are based on a preliminary investigation and are subject to change at any time as field conditions warrant.

Millwood Road, WEST

ADDRESS	CONSTRUCTION IMPACTS
6908 Millwood Road	Construct a 5-ft-wide concrete sidewalk with a 0 to 3-ft variable greenspace. Remove and replace the existing concrete driveway apron. Remove the existing slate leadwalk within County's public right of way as needed and replace with concrete.
6904 Millwood Road	Construct a 5-ft-wide concrete sidewalk with a 0 to 3-ft variable greenspace. Remove and replace the existing concrete driveway apron. Remove two Cherry trees, one 18-inch in diameter that was previously marked for removal due to poor health, and one 14-inch in diameter; replacement trees will be planted.
6900 Millwood Road	Construct a 5-ft-wide concrete sidewalk with a 0 to 3-ft variable greenspace. Remove and replace the existing concrete driveway apron. The sidewalk will run behind the utility pole, #765417-570050. Remove groundcover landscaping within County's public right of way as needed for sidewalk installation.
6828 Millwood Road	Construct a 5-ft-wide concrete sidewalk with a 0 to 3-ft variable greenspace. Remove and replace the existing concrete driveway apron. The sidewalk will run behind the utility pole #765416-580900; guide wires will need to be relocated. Remove one 6-inch diameter Serviceberry tree; replacement trees will be planted.
6824 Millwood Road	Construct a 5-ft-wide concrete sidewalk with a 0 to 3-ft variable greenspace. Remove the existing asphalt driveway apron and replace with concrete. The sidewalk will run in front of the utility pole #765416-600810. Remove bushes and groundcover landscaping within County's public right of way as needed for sidewalk installation.
6820 Millwood Road	Construct a 5-ft-wide concrete sidewalk with a 0 to 3-ft variable greenspace. Remove and replace the two existing concrete driveway aprons. The sidewalk will run in front of utility pole, #765416-620710. Remove bushes and groundcover landscaping within County's public right of way as needed to allow for sidewalk installation. Adjust the Gas valve.
6818 Millwood Road	Construct a 5-ft-wide concrete sidewalk with a 0 to 3-ft variable greenspace. Remove brick paver driveway apron and replace with concrete. Remove bushes and groundcover landscaping within County's public right of way as needed to allow for sidewalk installation. May need to adjust the Manhole cover. Remove one 33-inch diameter Cherry tree; replacement trees will be planted.
6816 Millwood Road	Construct a 5-ft-wide concrete sidewalk with a 0 to 3-ft variable greenspace. Remove and replace the existing concrete driveway apron. The sidewalk will run in front of the utility pole #765416-660620.
6808 Millwood Road	Construct a 5-ft-wide concrete sidewalk with a 0 to 3-ft variable greenspace. Remove and replace the existing concrete driveway apron.

PLEASE NOTE: The above impacts are based on a preliminary investigation and are subject to change at any time as field conditions warrant.

Millwood Road, WEST

ADDRESS	CONSTRUCTION IMPACTS
6804 Millwood Road	<p>Construct a 5-ft-wide concrete sidewalk with a 0 to 3-ft variable greenspace. Remove and replace the two existing concrete driveway aprons. The sidewalk will run behind the utility pole #765416-710480. Remove bushes and groundcover landscaping within County's public right of way as needed for sidewalk installation. Relocate Speed Bump sign.</p>
6800 Millwood Road	<p>Construct a 5-ft-wide concrete sidewalk with a 0 to 3-ft variable greenspace. Remove and replace the existing concrete driveway apron. Remove the existing brick leadwalk within County's public right of way as needed and replace with concrete. The sidewalk will run behind the utility pole #765416-770340; the guide wires may need to be relocated. Remove one 13-inch diameter Cherry tree; replacement trees will be planted.</p>
6616 Millwood Road	<p>Construct a 5-ft-wide concrete sidewalk with a 0 to 3-ft variable greenspace. Remove and replace the existing concrete driveway apron. Remove the existing slate leadwalk within County's public right of way as needed and replace with concrete. Remove bushes within County's public right of way as needed for sidewalk installation. Adjust the storm drain inlet top. Remove one 3-inch diameter Cherry tree; replacement trees will be planted.</p>
6612 Millwood Road	<p>Construct a 5-ft-wide concrete sidewalk with a 0 to 3-ft variable greenspace. Remove and replace the existing concrete driveway apron. The sidewalk will run behind the utility pole #765416-800130. Remove bushes and groundcover landscaping within County's public right of way as needed for sidewalk installation. Adjust the Water meter.</p>
6608 Millwood Road	<p>Construct a 5-ft-wide concrete sidewalk with a 0 to 3-ft variable greenspace. Remove and replace the existing concrete driveway apron. Remove three trees, one 15-inch diameter Callery Pear tree, and two Cherry trees, 7 and 2-inches in diameter; replacement trees will be planted.</p>
6604 Millwood Road	<p>Construct a 5-ft-wide concrete sidewalk with a 0 to 3-ft variable greenspace. Remove and replace the two existing concrete driveway aprons. Remove bushes and groundcover landscaping within County's public right of way as needed for sidewalk installation. Remove one 2.5-inch diameter Kwanzan Cherry tree; replacement trees will be planted.</p>
6600 Millwood Road	<p>Construct a 5-ft-wide concrete sidewalk with a 0 to 3-ft variable greenspace. Remove and replace the existing concrete driveway apron. The sidewalk will run behind the utility pole #765415-770960. The guide wires will need to be relocated. Remove bushes and groundcover landscaping within County's public right of way as needed for sidewalk installation. Remove four trees, one 3-inch diameter Weeping Ornamental tree, two Willow Oak trees, 28- and 24-inches in diameter, one 3-inch diameter Variegated Dogwood tree; replacement trees will be planted.</p>

PLEASE NOTE: The above impacts are based on a preliminary investigation and are subject to change at any time as field conditions warrant.

Millwood Road, WEST

ADDRESS	CONSTRUCTION IMPACTS
6518 Millwood Road	<p>Construct a 5-ft-wide concrete sidewalk with a 0 to 3-ft variable greenspace. Remove and replace the existing concrete driveway apron. The sidewalk will run behind the utility pole #765415-720810; the guide wires will need to be relocated. Remove one 14-inch Littleleaf Linden tree; replacement trees will be planted.</p>
6516 Millwood Road	<p>Construct a 5-ft-wide concrete sidewalk with a 0 to 3-ft variable greenspace. Remove and replace the existing concrete driveway apron. Remove shrubs and landscaping within County's public right of way as needed for sidewalk installation.</p>
6512 Millwood Road	<p>Construct a 5-ft-wide concrete sidewalk with a 0 to 3-ft variable greenspace. Remove and replace the existing concrete driveway apron. The sidewalk will run behind the utility pole #765415-680670; the guide wires will need to be relocated. Adjust the Manhole cover.</p>
6508 Millwood Road	<p>Construct a 5-ft-wide concrete sidewalk with a 0 to 3-ft variable greenspace. Remove and replace the existing concrete driveway apron. Remove groundcover landscaping within County's public right of way as needed for sidewalk installation. Relocate mailbox.</p>
6504 Millwood Road	<p>Construct a 5-ft-wide concrete sidewalk with a 0 to 3-ft variable greenspace. Remove and replace the existing concrete driveway apron. Remove the existing slate leadwalk within County's public right of way as needed and replace with concrete. Remove bushes and groundcover landscaping within County's public right of way as needed to allow for sidewalk installation.</p>
5901 Goldsboro Road, work on the side of the property along Millwood Road	<p>Construct a 5-ft-wide concrete sidewalk with a 0 to 3-ft variable greenspace. Remove the existing slate leadwalk within County's public right of way as needed and replace with concrete. Remove bushes and groundcover landscaping within County's public right of way as needed for sidewalk installation. The sidewalk will run in front of the brick Kenwood Park sign. Adjust the storm drain inlet top. Relocate the Stop sign and the Millwood Road and Goldsboro Road street signs. Remove three trees, one 21-inch diameter Black Cherry tree that is in poor condition, one 9-inch diameter Sugar Maple tree and one 16-inch diameter Holly tree; replacement trees will be planted.</p>
Millwood Road at Goldsboro Road	<p>Construct an ADA ramp.</p>

PLEASE NOTE: The above impacts are based on a preliminary investigation and are subject to change at any time as field conditions warrant.

Kenhill Road

Public Right-of-Way Construction Impacts

Side: West (even-numbered side)
Limits: Durbin Road to Highboro Drive
Sidewalk Width: 5-Ft
Sidewalk Material: Concrete
Road Width: 26-ft Curb to Curb

ADDRESS	CONSTRUCTION IMPACTS
Durbin Road at Kenhill Road	Construct an ADA ramp.
7012 Kenhill Road	Construct a 5-ft-wide concrete sidewalk with a 0 to 3-ft-wide variable greenspace. Remove paver leadwalk within County's public right of way and replace with concrete as needed. Remove bushes and landscaping within County's public right of way as needed for sidewalk installation. Remove tree stump. A retaining wall may be needed. Remove five trees, two Crape Myrtles, 9 and 11-inches in diameter, two Dogwood trees, 14 and 2-inches in diameter, and one 16-inch diameter Oak tree; replacement trees will be planted. (See also impacts to side yard along Durbin Road in the Durbin Road Right of Way Construction Impacts, Page 2 above)
7008 Kenhill Road	Construct a 5-ft-wide concrete sidewalk with a 0 to 3-ft-wide variable greenspace. Remove asphalt driveway apron and replace with concrete. Remove four trees, three Cherry trees, 4, 5.5 and 11-inches in diameter, and one 14-inch diameter Sugar Maple tree; replacement trees will be planted.
7004 Kenhill Road	Construct a 5-ft-wide concrete sidewalk with a 0 to 3-ft-wide variable greenspace. Remove asphalt driveway apron and replace with concrete driveway apron. Remove two 8 and 9-inch diameter Cherry trees; replacement trees will be planted.
7000 Kenhill Road	Construct a 5-ft-wide concrete sidewalk with a 0 to 3-ft-wide variable greenspace. Remove paver leadwalk within County's public right of way and replace with concrete. Place sidewalk in front of fire hydrant. Adjust storm drain top. Relocate stop sign and permit park signs. Remove two 18- and 12-inch diameter Cherry trees; replacement trees will be planted.

PLEASE NOTE: The above impacts are based on a preliminary investigation and are subject to change at any time as field conditions warrant.

Kenhill Road, WEST

ADDRESS	CONSTRUCTION IMPACTS
Kenhill Road at Lenox Road	Construct two ADA ramps.
6100 Lenox Road, work on side of property along Kenhill Road	Construct a 5-ft-wide concrete sidewalk with a 0 to 3-ft-wide variable greenspace. Remove and replace concrete driveway apron. Remove bushes and landscaping within County's public right of way as needed for sidewalk installation. Remove two Cherry trees, 13- and 14-inches in diameter; replacement trees will be planted.
6720 Kenhill Road	Construct a 5-ft-wide concrete sidewalk with a 0 to 3-ft-wide variable greenspace. Remove and replace concrete driveway apron. Remove bushes within County's public right of way as needed for sidewalk installation. Remove two trees, one 28-inch diameter Cherry tree, and one 10-inch diameter Southern Magnolia tree; replacement trees will be planted.
6716 Kenhill Road	Construct a 5-ft-wide concrete sidewalk with a 0 to 3-ft-wide variable greenspace. Remove bushes and landscaping within County's public right of way as needed for sidewalk installation. Remove and replace concrete driveway apron. Place sidewalk behind Optical Fiber Network box. Remove one 41-inch diameter Cherry tree; replacement trees will be planted.
6712 Kenhill Road	Construct a 5-ft-wide concrete sidewalk with a 0 to 3-ft-wide variable greenspace. Remove and replace concrete driveway apron. Remove landscaping within County's public right of way as needed for sidewalk installation. Remove two trees, one 18-inch diameter Locust tree and one 17-inch diameter Cherry tree; replacement trees will be planted.
6708 Kenhill Road	Construct a 5-ft-wide concrete sidewalk with a 0 to 3-ft-wide variable greenspace. Remove and replace concrete driveway apron. Place sidewalk behind fire hydrant.
6101 Eastview Street, work on side of property along Kenhill Road	Construct a 5-ft-wide concrete sidewalk with a 0 to 3-ft-wide variable greenspace. Adjust storm drain top.
Kenhill Road at Eastview Street	Construct two ADA ramps.
6100 Eastview Street, work on side of property along Kenhill Road	Construct a 5-ft-wide concrete sidewalk with a 0 to 3-ft-wide variable greenspace. Place sidewalk in front of Verizon box

PLEASE NOTE: The above impacts are based on a preliminary investigation and are subject to change at any time as field conditions warrant.

Kenhill Road, WEST

ADDRESS	CONSTRUCTION IMPACTS
6620 Kenhill Road	Construct a 5-ft-wide concrete sidewalk with a 0 to 3-ft-wide variable greenspace. Remove and replace two concrete driveway aprons.
6616 Kenhill Road	Construct a 5-ft-wide concrete sidewalk with a 0 to 3-ft-wide variable greenspace. Remove and replace concrete driveway apron.
6612 Kenhill Road	Construct a 5-ft-wide concrete sidewalk with a 0 to 3-ft-wide variable greenspace. Remove and replace concrete driveway apron. Remove bushes and landscaping within County's public right of way as needed for sidewalk installation. Remove paver leadwalk within County's public right of way and replace with concrete. Place sidewalk in front of Optical Fiber Network box.
6608 Kenhill Road	Construct a 5-ft-wide concrete sidewalk with a 0 to 3-ft-wide variable greenspace. Remove and replace concrete driveway apron. May need to relocate Light Pole No. 06009 for the sidewalk to run in front.
6604 Kenhill Road	Construct a 5-ft-wide concrete sidewalk with a 0 to 3-ft-wide variable greenspace. Remove and replace concrete driveway apron. Remove bushes and landscaping within County's public right of way as needed for sidewalk installation. Place sidewalk in front of optical fiber network box.
6600 Kenhill Road	Construct a 5-ft-wide concrete sidewalk with a 0 to 3-ft-wide variable greenspace. Remove and replace concrete driveway apron.
6528 Kenhill Road	Construct a 5-ft-wide concrete sidewalk with a 0 to 3-ft-wide variable greenspace. Remove and replace concrete driveway apron. Adjust storm drain top. Remove two Crape Myrtle trees, 19 and 20-inches in diameter; replacement trees will be planted.
6522 Kenhill Road	Construct a 5-ft-wide concrete sidewalk with a 0 to 3-ft-wide variable greenspace. Remove and replace concrete driveway apron. The sidewalk will run behind utility Pole No. 06007. Place sidewalk behind optical fiber network box. Adjust the in-ground Verizon telecom box. Adjust the manhole cover.
6516 Kenhill Road	Construct a 5-ft-wide concrete sidewalk with a 0 to 3-ft-wide variable greenspace. Remove and replace concrete driveway apron.

PLEASE NOTE: The above impacts are based on a preliminary investigation and are subject to change at any time as field conditions warrant.

Kenhill Road, WEST

ADDRESS	CONSTRUCTION IMPACTS
6512 Kenhill Road	Construct a 5-ft-wide concrete sidewalk with a 0 to 3-ft-wide variable greenspace. Remove and replace concrete driveway apron. Remove paver leadwalk within County's public right of way and replace with concrete.
6508 Kenhill Road	Construct a 5-ft-wide concrete sidewalk with a 0 to 3-ft-wide variable greenspace. Remove and replace two concrete driveway aprons. Place sidewalk in front of optical fiber network box.
6504 Kenhill Road	Construct a 5-ft-wide concrete sidewalk with a 0 to 3-ft-wide variable greenspace. Remove and replace concrete driveway apron. Adjust storm drain top. Remove one 13-inch diameter Cherry tree; replacement trees will be planted.
6500 Kenhill Road	Construct a 5-ft-wide concrete sidewalk with a 0 to 3-ft-wide variable greenspace. Remove and replace concrete driveway apron. Adjust storm drain top. Place sidewalk behind fire hydrant.

PLEASE NOTE: The above impacts are based on a preliminary investigation and are subject to change at any time as field conditions warrant.

Highboro Drive

Public Right-of-Way Construction Impacts

Side: Northeast (odd-numbered side)

Limits: Kenhill Road to Whittier Drive

Sidewalk Width: 5-Ft

Sidewalk Material: Concrete

Road Width: 26-ft Curb to Curb

ADDRESS	CONSTRUCTION IMPACTS
6001 Highboro Drive	<p>Construct a 5-ft-wide concrete sidewalk with a 0 to 3-ft-wide variable greenspace. The sidewalk will run behind utility Pole No. 765415-050650; Pole supporting cable may be relocated. Remove and replace two concrete driveway aprons. Adjust storm drain top. Remove three Cherry trees, 21, 24, and 20-inches diameter; replacement trees will be planted.</p>
6001 Shady Oak Lane, work on side of property along Highboro Drive	<p>Construct a 5-ft-wide concrete sidewalk with a 0 to 3-ft-wide variable greenspace. Remove and replace concrete driveway apron. Remove paver leadwalk within County's public right of way and replace with concrete. Remove bushes and landscaping within County's public right of way. Adjust the manhole cover. Remove two trees, one 1-inch diameter species tree and one 2-inch diameter Tree Hydrangea; replacement trees will be planted.</p>
Highboro Drive at Shady Oak Lane	<p>Construct two ADA ramps.</p>
6000 Shady Oak Lane, work on side of property along Highboro Drive	<p>Construct a 5-ft-wide concrete sidewalk with a 0 to 3-ft-wide variable greenspace. Remove one 9-inch diameter Cherry tree; replacement trees will be planted.</p>
6105 Highboro Drive	<p>Construct a 5-ft-wide concrete sidewalk with a 0 to 3-ft-wide variable greenspace. Remove and replace concrete driveway apron. Remove paver leadwalk within County's public right of way and replace with concrete. Remove bushes within County's public right of way as needed. Remove two trees, one 51-inch Willow Oak and one 23-inch Cherry tree; replacement trees will be planted.</p>

PLEASE NOTE: The above impacts are based on a preliminary investigation and are subject to change at any time as field conditions warrant.

Highboro Drive, NORTHEAST

ADDRESS	CONSTRUCTION IMPACTS
6109 Highboro Drive	<p>Construct a 5-ft-wide concrete sidewalk with a 0 to 3-ft-wide variable greenspace.</p> <p>Remove and replace two concrete driveway aprons.</p> <p>Remove bushes and landscaping within County's public right of way as needed.</p> <p>Place sidewalk behind fire hydrant.</p> <p>Remove one 17-inch diameter Cherry tree; replacement trees will be planted.</p>
6113 Highboro Drive	<p>Construct a 5-ft-wide concrete sidewalk with a 0 to 3-ft-wide variable greenspace.</p> <p>Remove and replace two concrete driveway aprons.</p> <p>Remove bushes and landscaping within County's public right of way.</p>
6117 Highboro Drive	<p>Construct a 5-ft-wide concrete sidewalk with a 0 to 3-ft-wide variable greenspace.</p> <p>Remove and replace concrete driveway apron.</p> <p>Remove paver leadwalk within County's public right of way and replace with concrete.</p> <p>Remove two trees, one 6-inch diameter Elm tree and one 18-inch diameter Cherry tree; replacement trees will be planted.</p>
6121 Highboro Drive	<p>Construct a 5-ft-wide concrete sidewalk with a 0 to 3-ft-wide variable greenspace.</p> <p>Remove and replace concrete driveway apron.</p> <p>Remove paver leadwalk within County's public right of way and replace with concrete.</p> <p>Remove two Cherry trees, 3 and 4-inches in diameter; replacement trees will be planted.</p>
6609 Whittier Boulevard, work on side of property along Highboro Drive	<p>Construct a 5-ft-wide concrete sidewalk with a 0 to 3-ft-wide variable greenspace.</p> <p>Adjust storm drain top.</p> <p>Remove two Cherry trees, 31- and 16-inches in diameter; replacement trees will be planted.</p>
Highboro Drive at Whittier Boulevard	<p>Remove and replace ADA ramp.</p>

PLEASE NOTE: The above impacts are based on a preliminary investigation and are subject to change at any time as field conditions warrant.

Exhibit 4

Original and Revised Arborist's Tree Protection Reports

Tree Protection - new sidewalk **8.27.20**
Kenwood Park **Rick Holley**
 *All root pruning shall be done to a maximum depth of 6"
 DBH = diameter (in.) at breast height (4.5 ft above ground)
 Location: F = front, S = side, R = rear, I = island, M = Median, O = Opposite, P = Private, ms = multi-stem
 Pruning: s/w = sidewalk, elev = elevation pruning, DW = dead wood removal, d/w = driveway
 cli - clear light, csi = clear sign, cpt = clear private tree, clh = clear house, rd = road
 Tree Protection: F = fencing required, n/a = no action, ms = multi-stem

Note: refer to *Tree Protection Requirements For The Department Of Transportation* for Standard Tree Protection Measures

Note: Inspection of worksite tree protection measures required by MC-DOT Arborist prior to construction activities

Note: ROW not to be utilized for staging area unless otherwise permitted by MC-DOT Arborist prior to construction activities

ADDRESS	SPECIES	LOCATION	DBH	RECOMMENDATIONS
Durbin Rd				
5632 Bradley Blvd	Norway Spruce	1S-P	20	F, Air Excavation required
5632 Bradley Blvd	Black Oak	2S-P	20	F, Air Excavation required, elevate 8' over proposed s/w
5632 Bradley Blvd	Black Oak	3S-P	19	F, Air Excavation required
5632 Bradley Blvd	Dogwood	4S-P	2	F, Root prune along edge of proposed s/w
5706	Japanese Maple	1F-P	9.5	F, Root prune along edge of proposed s/w, elevate 8' over proposed s/w
5710 Durbin Terr	Shrub (Euonymus)	1F	21 ms	F, Root prune along edge of proposed s/w, elevate 8' over proposed s/w
5710 Durbin Terr	Crape Myrtle	1F-P	21 ms	F, Root prune along edge of proposed s/w. Note: poor condition
7613 Durbin Terr	Silver Maple	1S-P	35	F, Air Excavation required
7613 Durbin Terr	Silver Maple	2S-P	37	F, Air Excavation required
5720	River Birch	1F-P	9	F
5720	Cherry	2F-P	2	n/a
5720	Cherry	3F-P	2	n/a
5724	Cherry	1F	25	Remove: proposed s/w construction would compromise health/structural stability of tree Note: tree in poor condition
5724	Oak	2F	11	Remove: proposed s/w construction would compromise health/structural stability of tree
5800	Linden	1F	13	Remove: proposed s/w construction would compromise health/structural stability of tree
5804	Serviceberry	1F	4.5	Remove: proposed s/w construction would compromise health/structural stability of tree
5804	Magnolia	1F-P	16	F, Air Excavation required, elevate 8' over proposed s/w
5804	Crape Myrtle	2F	10.5	Remove: proposed s/w construction would compromise health/structural stability of tree
5808	Goldenrain Tree	1F	11	Remove: proposed s/w construction would compromise health/structural stability of tree
5808	Goldenrain Tree	2F	13	Remove: proposed s/w construction would compromise health/structural stability of tree
5812	Goldenrain Tree	1F	10	Remove: proposed s/w construction would compromise health/structural stability of tree
5812	Cherry	2F	20	Remove: proposed s/w construction would compromise health/structural stability of tree
5816				No trees on county right of way at this address
5820	Goldenrain Tree	1F	12	Remove: proposed s/w construction would compromise health/structural stability of tree
5824	Japanese Maple	1F	7	F, Root prune along edge of proposed s/w, elevate 8' over proposed s/w
5824	Goldenrain Tree	2F	11	Remove: proposed s/w construction would compromise health/structural stability of tree
5824	Cherry	3F	7	Remove: proposed s/w construction would compromise health/structural stability of tree
7109 Marbury Rd	Cherry	1S	31	Remove: proposed s/w construction would compromise health/structural stability of tree
5900	Cherry	1F	8	Remove: proposed s/w construction would compromise health/structural stability of tree
5900	Cherry	2F	23	Remove: proposed s/w construction would compromise health/structural stability of tree
6004	Crabapple	1F	14	Remove: proposed s/w construction would compromise health/structural stability of tree
6112	SPECIES	1F	2	Remove: proposed s/w construction would compromise health/structural stability of tree

ADDRESS	SPECIES	LOCATION	DBH	RECOMMENDATIONS
6112	Cherry	2F	14	Remove: proposed s/w construction would compromise health/structural stability of tree
6112	Crabapple	3F	22	Remove: proposed s/w construction would compromise health/structural stability of tree
				Note: tree in poor condition
6116	Zelkova	1F	4	Remove: proposed s/w construction would compromise health/structural stability of tree
6116	Zelkova	2F	3	Remove: proposed s/w construction would compromise health/structural stability of tree
6120	Southern Magnolia	1F	31	F, Air Excavation required
6124				No trees on county right of way at this address
6128				No trees on county right of way at this address
Lenox Rd				
County Easement between 7000 Millwood Rd & 7001 Kenhill Rd	Black Locust	1F	18	Remove: proposed s/w construction would compromise health/structural stability of tree
	Black Locust	2F	18	Remove: proposed s/w construction would compromise health/structural stability of tree
	White Pine	3F	26	Remove: proposed s/w construction would compromise health/structural stability of tree
6105				No trees on county right of way at this address
6109	Pin Oak	1F	29	Remove: proposed s/w construction would compromise health/structural stability of tree
6109	Pin Oak	2F	30	Remove: proposed s/w construction would compromise health/structural stability of tree
7001 Hopewood St				No trees on county right of way at this address
7000 Hopewood St	Crape Myrtle	1S	12 ms	Remove: proposed s/w construction would compromise health/structural stability of tree
7000 Hopewood St	Crape Myrtle	2S	12 ms	Remove: proposed s/w construction would compromise health/structural stability of tree
7000 Hopewood St	Crape Myrtle	3S	12 ms	Remove: proposed s/w construction would compromise health/structural stability of tree
7000 Hopewood St	Crape Myrtle	4S	12 ms	Remove: proposed s/w construction would compromise health/structural stability of tree
7000 Hopewood St	Pine	5S	23	F, Air Excavation required, elevate 8' over proposed s/w
7001 Whittier Blvd				No trees on county right of way at this address
Millwood Rd				
5901 Goldsboro Rd	Holly	1S	13	F, Root prune along edge of proposed s/w
5901 Goldsboro Rd	Holly	2S	5	F, Root prune along edge of proposed s/w
5901 Goldsboro Rd	Holly	3S	16	Remove: proposed s/w construction would compromise health/structural stability of tree
5901 Goldsboro Rd	Sugar Maple	4S	9	Remove: proposed s/w construction would compromise health/structural stability of tree
5901 Goldsboro Rd	Black Cherry	5S	21	Remove: proposed s/w construction would compromise health/structural stability of tree
				Note: tree in poor condition
6504	Magnolia	1F	29	F, Root prune along edge of proposed s/w, elevate 8' over proposed s/w
6508				No trees on county right of way at this address
6512	Black Oak	1F-P	52	F, Air Excavation required
6516	Magnolia	1F-P	38	F, Root prune along edge of proposed s/w, elevate 8' over proposed s/w
6518	Spruce	1F-P	32	F, Root prune along edge of proposed s/w, elevate 8' over proposed s/w
6518	Littleleaf Linden	1F	14	Remove: proposed s/w construction would compromise health/structural stability of tree
6518	Dogwood	2F	17	F
6600	Willow Oak	1F	24	Remove: proposed s/w construction would compromise health/structural stability of tree
6600	Variegated Dogwood	2F	3	Remove: proposed s/w construction would compromise health/structural stability of tree
6600	Willow Oak	3F	28	Remove: proposed s/w construction would compromise health/structural stability of tree
6600	Weeping Ornamental	4F	3	Remove: proposed s/w construction would compromise health/structural stability of tree
6604	Crape Myrtle	1F	12 ms	F, Root prune along edge of proposed s/w, elevate 8' over proposed s/w
6604	Kwanzan Cherry	2F	2.5	Remove: proposed s/w construction would compromise health/structural stability of tree

ADDRESS	SPECIES	LOCATION	DBH	RECOMMENDATIONS
6608	Cherry	1F	2	Remove: proposed s/w construction would compromise health/structural stability of tree
6608	Cherry	2F	7	Remove: proposed s/w construction would compromise health/structural stability of tree
6608	Callery Pear	3F	15	Remove: proposed s/w construction would compromise health/structural stability of tree
6612	Holly	1F	6	F, Root prune along edge of proposed s/w
6612	Cherry	1F-P	4	F
6612	Japanese Maple	2F	8	F, Root prune along edge of proposed s/w
6616	Cherry	1F	3	F, Root prune along edge of proposed s/w
6616	Cherry	2F	3	Remove: proposed s/w construction would compromise health/structural stability of tree
6616 1/2	Dogwood	1F	8	F, Elevate 8' along proposed s/w
6616 1/2	Mulberry	1F-P	8	F, Elevate 8' along proposed s/w
6800	Cherry	1F	13	Remove: proposed s/w construction would compromise health/structural stability of tree
6804	Kousa Dogwood	1F-P	10	F, Elevate 8' along proposed s/w
6804	Dogwood	1F	5	F, Root prune along edge of proposed s/w
6804	Oak	2F-P	20	F, Root prune along edge of proposed s/w
6804	Oak	3F-P	21	F, Root prune along edge of proposed s/w
6804	Cherry	2F	21	F, Root prune along edge of proposed s/w
6804	Serviceberry	3F	11	F, Root prune along edge of proposed s/w
6808				No trees on county right of way at this address
6816	Crape Myrtle	1F-P	48 ms	F, Root prune along edge of proposed s/w
6818	Cherry	1F	33	Remove: proposed s/w construction would compromise health/structural stability of tree
6820	Weeping Cherry	1F-P	8	F
6824	Crape Myrtle	1F	12ms	F, Root prune along edge of proposed s/w
6824	Japanese Maple	2F	10	F, Root prune along edge of proposed s/w, elevate 8' over proposed s/w
6824	Japanese Maple	3F	11	F, Root prune along edge of proposed s/w, elevate 8' over proposed s/w
6828	Serviceberry	1F	6	Remove: proposed s/w construction would compromise health/structural stability of tree
6900				No trees on county right of way at this address
6904	Japanese Maple	1F	10.5	F, Root prune along edge of proposed s/w, elevate 8' over proposed s/w
6904	Cherry	2F	14	Remove: proposed s/w construction would compromise health/structural stability of tree
6904	Cherry	3F	18	Tree previously marked for removal
6908	Weeping Japanese Maple	1F-P	8	F
6912	Magnolia	1F	8	Remove: proposed s/w construction would compromise health/structural stability of tree
6912	Crape Myrtle	2F	10 ms	F, Root prune along edge of proposed s/w, elevate 8' over proposed s/w
6912	Crabapple	3F	13	Remove: proposed s/w construction would compromise health/structural stability of tree
6916	Cherry	1F	20	Remove: proposed s/w construction would compromise health/structural stability of tree
6920	Cherry	1F	17	Remove: proposed s/w construction would compromise health/structural stability of tree
6000 Lenox Rd	Japanese Maple	1F-P	10	F
6000 Lenox Rd	Magnolia	2F-P	21	F
6000 Lenox Rd	Spruce	3F-P	12	F, Note: poor condition
7000	Cherry	1S	6	Remove: proposed s/w construction would compromise health/structural stability of tree
7000	Linden	2S	24	F, Air Excavation Required
7000	Mulberry	3S	5	Remove: proposed s/w construction would compromise health/structural stability of tree

ADDRESS	SPECIES	LOCATION	DBH	RECOMMENDATIONS
7000	Spruce	4S	15	Remove: proposed s/w construction would compromise health/structural stability of tree. Note: poor condition
7000	Spruce	5S	14	Remove: proposed s/w construction would compromise health/structural stability of tree. Note: poor condition
7000	Spruce	6S	10	Remove: proposed s/w construction would compromise health/structural stability of tree. Note: poor condition
7000	Spruce	7S	10	Remove: proposed s/w construction would compromise health/structural stability of tree. Note: poor condition
7000	Spruce	8S	10	Remove: proposed s/w construction would compromise health/structural stability of tree. Note: poor condition
7000	Spruce	9S	11	Remove: proposed s/w construction would compromise health/structural stability of tree. Note: poor condition
7000	Spruce	10S	10	Remove: proposed s/w construction would compromise health/structural stability of tree. Note: poor condition
7000	Spruce	11S	8	Remove: proposed s/w construction would compromise health/structural stability of tree. Note: poor condition
7000	Spruce	12S	12	Remove: proposed s/w construction would compromise health/structural stability of tree. Note: poor condition
7000	Cherry	1F	7	Remove: proposed s/w construction would compromise health/structural stability of tree
7000	Cherry	2F	5.5	Remove: proposed s/w construction would compromise health/structural stability of tree
7004				No trees on county right of way at this address
7008	Yellowwood	1F	2	Remove: proposed s/w construction would compromise health/structural stability of tree
7100	Sugar Maple	1F	18	F, Root prune along edge of proposed s/w
7104	Red Maple	1F	12	Remove: proposed s/w construction would compromise health/structural stability of tree
7104	Cherry	2F	28	Remove: proposed s/w construction would compromise health/structural stability of tree
7108	Crape Myrtle	1F-P	28 ms	F
7108	Cherry	1F	12	Remove: proposed s/w construction would compromise health/structural stability of tree
7108	Cherry	2F	12	Remove: proposed s/w construction would compromise health/structural stability of tree
7108	Cherry	3F	7	Remove: proposed s/w construction would compromise health/structural stability of tree
7108	Cherry	4F	14	Remove: proposed s/w construction would compromise health/structural stability of tree
7108	Redbud	1S	15	F, Root prune along edge of proposed s/w, elevate 8' over proposed s/w
7108	Cherry	2S	24	Remove: proposed s/w construction would compromise health/structural stability of tree
7113	Crape Myrtle	1s	9	Remove: proposed s/w construction would compromise health/structural stability of tree
7113	Japanese Maple	2s	2	F
7113	Magnolia	3s	16	F, Root prune along edge of proposed s/w
7113	Southern Magnolia	1F	21	F, Root prune along edge of proposed s/w, elevate 8' over proposed s/w
7200	Linden	1F	21	Remove: proposed s/w construction would compromise health/structural stability of tree
7200	Linden	2F	20	Remove: proposed s/w construction would compromise health/structural stability of tree
7204	White Pine	1F	24	Remove: proposed s/w construction would compromise health/structural stability of tree
7204	Magnolia	2F	32	Remove: proposed s/w construction would compromise health/structural stability of tree
7204	White Pine	1F-P	23	F, Root prune up to edge of proposed s/w
7208	Cherry	1F-P	8	F

ADDRESS	SPECIES	LOCATION	DBH	RECOMMENDATIONS
7208	Cherry	2F-P	5	F
7208	Red Maple	3F-P	5	F
7228 Millwood Ct	Redbud	1F	7	Remove: proposed s/w construction would compromise health/structural stability of tree
7228 Millwood Ct	Redbud	2F	9	Remove: proposed s/w construction would compromise health/structural stability of tree
7228 Millwood Ct	Swamp White Oak	3F	8	Remove: proposed s/w construction would compromise health/structural stability of tree
7228 Millwood Ct	Linden	4F	18	Remove: proposed s/w construction would compromise health/structural stability of tree
7304	Cherry	1F	19	Remove: proposed s/w construction would compromise health/structural stability of tree
7308	Cherry	1F	16	Remove: proposed s/w construction would compromise health/structural stability of tree
7312	Sugar Maple	1F	12	Remove: proposed s/w construction would compromise health/structural stability of tree
7312	Sugar Maple	2F	18	Remove: proposed s/w construction would compromise health/structural stability of tree
7312	Sugar Maple	3F	21	Remove: proposed s/w construction would compromise health/structural stability of tree
7312	Sugar Maple	4F	22	Remove: proposed s/w construction would compromise health/structural stability of tree
Highboro Dr				
6609 Whittier Blvd	Cherry	2S	16	Remove: proposed s/w construction would compromise health/structural stability of tree
6609 Whittier Blvd	Cherry	1S	31	Remove: proposed s/w construction would compromise health/structural stability of tree
6121	Cherry	2F	4	Remove: proposed s/w construction would compromise health/structural stability of tree
6121	Cherry	1F	3	Remove: proposed s/w construction would compromise health/structural stability of tree
6117	Cherry	2F	18	Remove: proposed s/w construction would compromise health/structural stability of tree
6117	Elm	1F	6	Remove: proposed s/w construction would compromise health/structural stability of tree
6113	Crape Myrtle	1F	18 ms	F, Root prune along edge of proposed s/w
6113	Southern Magnolia	2F	19	F, Air Excavation Required, elev 8' over proposed s/w if tree does not require removal
6113	Crape Myrtle	1F-P	24 ms	F
6109	Cherry	1F	17	Remove: proposed s/w construction would compromise health/structural stability of tree
6105	Cherry	2F	23	Remove: proposed s/w construction would compromise health/structural stability of tree
6105	Willow Oak	1F	52	Remove: proposed s/w construction would compromise health/structural stability of tree
6000 Shady Oak Ln	Cherry	1S	9	Remove: proposed s/w construction would compromise health/structural stability of tree
6001 Shady Oak Ln	Weeping Cherry	3S	24	F, Air Excavation Required
6001 Shady Oak Ln	Tree Hydrangea	2S	2	Remove: proposed s/w construction would compromise health/structural stability of tree
6001 Shady Oak Ln	Species	1S	1	Remove: proposed s/w construction would compromise health/structural stability of tree
6001	Cherry	3F	20	Remove: proposed s/w construction would compromise health/structural stability of tree
6001	Cherry	2F	24	Remove: proposed s/w construction would compromise health/structural stability of tree
6001	Cherry	1F	21	Remove: proposed s/w construction would compromise health/structural stability of tree
Kenhill Rd				
6500	Weeping Cherry	1F	7	F
6504	Cherry	1F	13	Remove: proposed s/w construction would compromise health/structural stability of tree
6508				No trees on county right of way at this address
6512				No trees on county right of way at this address
6516				No trees on county right of way at this address
6522				No trees on county right of way at this address
6528	Crape Myrtle	1F	20	Remove: proposed s/w construction would compromise health/structural stability of tree
6528	Crape Myrtle	2F	21	F, Root prune along edge of proposed s/w
6528	Crape Myrtle	3F	19	Remove: proposed s/w construction would compromise health/structural stability of tree

ADDRESS	SPECIES	LOCATION	DBH	RECOMMENDATIONS
6600				No trees on county right of way at this address
6604				No trees on county right of way at this address
6608				No trees on county right of way at this address
6612	Dogwood	1F-P	11	F, elevate 8' over proposed s/w
6616	Southern Magnolia	1F-P	20	F
6616	Norway Spruce	2F-P	31	F
6620				No trees on county right of way at this address
6100 Eastview St				No trees on county right of way at this address
6100 Eastview St	Purpleleaf Chokecherry	1S	13	F, Air Excavation Required, elev 8' over proposed s/w if tree does not require removal
6100 Eastview St	Purpleleaf Chokecherry	2S	13	F, Air Excavation Required, elev 8' over proposed s/w if tree does not require removal
6708				No trees on county right of way at this address
6712	Cherry	1F	17	Remove: proposed s/w construction would compromise health/structural stability of tree
6712	locust	2F	18	Remove: proposed s/w construction would compromise health/structural stability of tree
6716	Cherry	1F	41	Remove: proposed s/w construction would compromise health/structural stability of tree
6720	Southern Magnolia	1F	10	Remove: proposed s/w construction would compromise health/structural stability of tree
6720	Cherry	2F	28	Remove: proposed s/w construction would compromise health/structural stability of tree
6720	multi-stem shrub	3F	24	F, elevate 8' over proposed s/w
6720	Cherry	1F-P	37	F, Root prune along edge of proposed s/w
6100 Lenox Rd	Cherry	1S	13	Remove: proposed s/w construction would compromise health/structural stability of tree
6100 Lenox Rd	Cherry	2S	14	Remove: proposed s/w construction would compromise health/structural stability of tree
6100 Lenox Rd	Crape Myrtle	3S	5	F, elevate 8' over proposed s/w
7000	Southern Magnolia	1F-P	48	F, Air Excavation Required, elev 8' over proposed s/w if tree does not require removal
7000	Cherry	2F	12	Remove: proposed s/w construction would compromise health/structural stability of tree
7000	Cherry	3F	18	Remove: proposed s/w construction would compromise health/structural stability of tree
7000	Cherry	1S	8	F, Root prune along edge of proposed s/w, elevate 8' over proposed s/w
7000	Cherry	2S	12	F, Root prune along edge of proposed s/w, elevate 8' over proposed s/w
7001	Cherry	1S	8	Remove: proposed s/w construction would compromise health/structural stability of tree
7001	Cherry	2S	7	Remove: proposed s/w construction would compromise health/structural stability of tree
7001	Cherry	3S	9	F, Root prune along edge of proposed s/w, elevate 8' over proposed s/w
7001	Sycamore	1F-P	8	F, elevate 8' over proposed s/w
7017	Ginkgo	1S	6.5	F, Root prune along edge of proposed s/w, elevate 8' over proposed s/w
7012	Crape Myrtle	1S	13 ms	Remove: proposed s/w construction would compromise health/structural stability of tree
7012	Crape Myrtle	2S	9 ms	Remove: proposed s/w construction would compromise health/structural stability of tree
7012	Crape Myrtle	3S	9 ms	Remove: proposed s/w construction would compromise health/structural stability of tree
7012	Oak	4S	6	Remove: proposed s/w construction would compromise health/structural stability of tree
7012	Oak	5S	13	Remove: proposed s/w construction would compromise health/structural stability of tree
7012	Magnolia	6S	13	Remove: proposed s/w construction would compromise health/structural stability of tree
7012	Linden	7S	18	Remove: proposed s/w construction would compromise health/structural stability of tree
7012	Crape Myrtle	8S	5 ms	Remove: proposed s/w construction would compromise health/structural stability of tree
7004	Cherry	1F	8	Remove: proposed s/w construction would compromise health/structural stability of tree
7004	Cherry	2F	9	Remove: proposed s/w construction would compromise health/structural stability of tree
7008	Sugar Maple	1F	14	Remove: proposed s/w construction would compromise health/structural stability of tree

Tree Protection - new sidewalk		2.28.23 rev.1		Note: refer to <i>Tree Protection Requirements For The Department Of Transportation</i> for Standard Tree Protection Measures	
Kenwood Park				Note: Inspection of worksite tree protection measures required	
*All root pruning shall be done to a maximum depth of 6"				by MC-DOT Arborist prior to construction activities	
DBH = diameter (in.) at breast height (4.5 ft above ground)				Note: ROW not to be utilized for staging area unless otherwise permitted	
Location: F = front, S = side, R = rear, I = island, M = Median, O = Opposite, P = Private, ms = multi-stem				by MC-DOT Arborist prior to construction activities	
Pruning: s/w = sidewalk, elev = elevation pruning, DW = dead wood removal, d/w = driveway					
cli - clear light, csi = clear sign, cpt = clear private tree, clh = clear house, rd = road					
Tree Protection: F = fencing required, n/a = no action, ms = multi-stem					
ADDRESS	SPECIES	LOCATION	DBH	RECOMMENDATIONS	
Durbin Rd					
5632 Bradley Blvd	Norway Spruce	1S-P	20	F, Air Excavation required	
5632 Bradley Blvd	Black Oak	2S-P	20	F, Air Excavation required, elevate 8' over proposed s/w	
5632 Bradley Blvd	Black Oak	3S-P	19	F, Air Excavation required	
5632 Bradley Blvd	Dogwood	4S-P	2	F, Root prune along edge of proposed s/w	
5706	Japanese Maple	1F-P	9.5	F, Root prune along edge of proposed s/w, elevate 8' over proposed s/w	
5710 Durbin Terr	Shrub (Euonymus)	1F	21 ms	F, Root prune along edge of proposed s/w, elevate 8' over proposed s/w	
5710 Durbin Terr	Crape Myrtle	1F-P	21 ms	F, Root prune along edge of proposed s/w. Note: poor condition	
7613 Durbin Terr	Silver Maple	1S-P	35	F, Air Excavation required	
7613 Durbin Terr	Silver Maple	2S-P	37	F, Air Excavation required	
5720	River Birch	1F-P	9	F	
5720	Cherry	2F-P	2	n/a	
5720	Cherry	3F-P	2	n/a	
5724	Cherry	1F	25	Remove: proposed s/w construction would compromise health/structural stability of tree Note: tree in poor condition	
5724	Oak	2F	11	Air Excavation required, construct s/w to rear of tree if construction method avoids root damage	
5800	Linden	1F	13	Air Excavation required, construct s/w to rear of tree if construction method avoids root damage	
5804	Serviceberry	1F	4.5	Air Excavation required, construct s/w to rear of tree if construction method avoids root damage	
5804	Magnolia	1F-P	16	Air Excavation required, construct s/w to rear of tree if construction method avoids root damage	
5804	Crape Myrtle	2F	10.5	Air Excavation required, construct 4' s/w at curb if construction method avoids root damage	
5808	Goldenrain Tree	1F	11	Air Excavation required, construct s/w to rear of tree if construction method avoids root damage	
5808	Goldenrain Tree	2F	13	Air Excavation required, construct s/w to rear of tree if construction method avoids root damage	
5812	Goldenrain Tree	1F	10	Air Excavation required, construct s/w to rear of tree if construction method avoids root damage	
5812	Cherry	2F	20	Air Excavation required, construct s/w to rear of tree if construction method avoids root damage	

ADDRESS	SPECIES	LOCATION	DBH	RECOMMENDATIONS
5816	Cherry	1F	1.5	Air Excavation required, construct s/w to rear of tree if construction method avoids root damage
5820	Goldenrain Tree	1F	12	Air Excavation required, construct s/w to rear of tree if construction method avoids root damage
5824	Japanese Maple	1F	7	Removal required if s/w is constructed behind trees in this stretch
5824	Goldenrain Tree	2F	11	Air Excavation required, construct s/w to rear of tree if construction method avoids root damage
5824	Cherry	3F	7	Air Excavation required, construct s/w to rear of tree if construction method avoids root damage
7109 Marbury Rd	Cherry	1S	31	Air Excavation required, construct s/w to rear of tree if construction method avoids root damage
5900	Cherry	1F	8	Air Excavation required, construct s/w to rear of tree if construction method avoids root damage
5900	Cherry	2F	23	Air Excavation required, construct s/w to rear of tree if construction method avoids root damage
6004	Crabapple	1F	14	Air Excavation required, construct 4-5' s/w at curb if construction method avoids root damage
6112	Mulberry	1F	2	Air Excavation required, construct s/w to rear of tree if construction method avoids root damage
6112	Cherry	2F	14	Air Excavation required, construct s/w to rear of tree if construction method avoids root damage
6112	Crabapple	3F	22	Air Excavation required, construct 4-5' s/w at curb if construction method avoids root damage
6116	Zelkova	1F	4	Air Excavation required, construct 4-5' s/w at curb if construction method avoids root damage
6116	Zelkova	2F	3	Air Excavation required, construct 4-5' s/w at curb if construction method avoids root damage
6120	Southern Magnolia	1F	31	Air Excavation required, construct 4-5' s/w at curb if construction method avoids root damage
6124				No trees on county right of way at this address
6128				No trees on county right of way at this address
Lenox Rd				
County Easement between	Black Locust	1F	18	Root prune up to edge of proposed s/w
7000 Millwood Rd & 7001 Kenhill Rd	Black Locust	2F	18	Root prune up to edge of proposed s/w
	White Pine	3F	26	Air Excavation required, construct 5' s/w at curb if construction method avoids root damage, elev s/w
6105				No trees on county right of way at this address
6109	Pin Oak	1F	29	Air Excavation required, construct 4-5' s/w at curb if construction method avoids root damage
6109	Pin Oak	2F	30	Air Excavation required, construct 4-5' s/w at curb if construction method avoids root damage
7001 Hopewood St				No trees on county right of way at this address

ADDRESS	SPECIES	LOCATION	DBH	RECOMMENDATIONS
7000 Hopewood St	Crape Myrtle	1S	12 ms	Root prune up to edge of proposed s/w, construct 4-5' s/w at curb
7000 Hopewood St	Crape Myrtle	2S	12 ms	Root prune up to edge of proposed s/w, construct 4-5' s/w at curb
7000 Hopewood St	Crape Myrtle	3S	12 ms	Root prune up to edge of proposed s/w, construct 4-5' s/w at curb
7000 Hopewood St	Crape Myrtle	4S	12 ms	Root prune up to edge of proposed s/w, construct 4-5' s/w at curb
7000 Hopewood St	Pine	5S	23	Root prune up to edge of proposed s/w, construct 4-5' s/w at curb
7001 Whittier Blvd				No trees on county right of way at this address
Millwood Rd				
5901 Goldsboro Rd	Holly	1S	13	F, Root prune along edge of proposed s/w
5901 Goldsboro Rd	Holly	2S	5	F, Root prune along edge of proposed s/w
5901 Goldsboro Rd	Holly	3S	16	Air Excavation required, construct 4-5' s/w at curb if construction method avoids root damage
5901 Goldsboro Rd	Sugar Maple	4S	9	Remove: poor condition, bark delamination
5901 Goldsboro Rd	Black Cherry	5S	21	Remove: proposed s/w construction would compromise health/structural stability of tree Note: tree in poor condition
6504	Magnolia	1F	29	F, Root prune along edge of proposed s/w, elevate 8' over proposed s/w
6508				No trees on county right of way at this address
6512	Black Oak	1F-P	52	F, Air Excavation required
6516	Magnolia	1F-P	38	F, Root prune along edge of proposed s/w, elevate 8' over proposed s/w
6518	Spruce	1F-P	32	F, Root prune along edge of proposed s/w, elevate 8' over proposed s/w
6518	Littleleaf Linden	1F	14	Remove: proposed s/w construction would compromise health/structural stability of tree, no alternate path available
6518	Dogwood	2F	17	F
6600	Willow Oak	1F	24	Air Excavation required, construct s/w to rear of tree if construction method avoids root damage
6600	Variiegated Dogwood	2F	3	Air Excavation required, construct s/w to rear of tree if construction method avoids root damage
6600	Willow Oak	3F	28	Air Excavation required, construct s/w to rear of tree if construction method avoids root damage
6600	Weeping Ornamental	4F	3	Air Excavation required, construct s/w to rear of tree if construction method avoids root damage
6604	Crape Myrtle	1F	12 ms	Air Excavation required, construct s/w to rear of tree if construction method avoids root damage
6604	Kwanzan Cherry	2F	2.5	Remove: proposed s/w construction would compromise health/structural stability of tree, no alternate path available
6608	Cherry	1F	2	Construct s/w at rear of tree, root prune up to edge of proposed s/w
6608	Cherry	2F	7	Construct s/w at rear of tree, root prune up to edge of proposed s/w, elev s/w
6608	Callery Pear	3F	15	Air Excavation required, construct s/w to rear of tree if construction method avoids root damage, elev s/w
6612	Holly	1F	6	F, Root prune along edge of proposed s/w
6612	Cherry	1F-P	4	F
6612	Japanese Maple	2F	8	F, Root prune along edge of proposed s/w
6616	Cherry	1F	3	F, Root prune along edge of proposed s/w

ADDRESS	SPECIES	LOCATION	DBH	RECOMMENDATIONS
6616	Cherry	2F	3	Construct s/w at rear of tree, root prune up to edge of proposed s/w
6616 1/2	Dogwood	1F	8	F, Elevate 8' along proposed s/w
6616 1/2	Mulberry	1F-P	8	F, Elevate 8' along proposed s/w
6800	Cherry	1F	13	Air Excavation required, construct s/w to rear of tree if construction method avoids root damage
6804	Kousa Dogwood	1F-P	10	F, Elevate 8' along proposed s/w
6804	Dogwood	1F	5	F, Root prune along edge of proposed s/w
6804	Oak	2F-P	20	F, Root prune along edge of proposed s/w
6804	Oak	3F-P	21	F, Root prune along edge of proposed s/w
6804	Cherry	2F	21	F, Root prune along edge of proposed s/w
6804	Serviceberry	3F	11	F, Root prune along edge of proposed s/w
6808				No trees on county right of way at this address
6816	Crape Myrtle	1F-P	48 ms	F, Root prune along edge of proposed s/w
6818	Cherry	1F	33	Air Excavation required, construct 4' s/w at curb if construction method avoids root damage
6820	Weeping Cherry	1F-P	8	F
6824	Crape Myrtle	1F	12ms	F, Root prune along edge of proposed s/w
6824	Japanese Maple	2F	10	Air Excavation required, construct 4-5' s/w at curb if construction method avoids root damage
6824	Japanese Maple	3F	11	F, Root prune along edge of proposed s/w, elevate 8' over proposed s/w
6828	Serviceberry	1F	6	Construct 4' s/w at curb, elev s/w, root prune up to edge of proposed s/w
6900				No trees on county right of way at this address
6904	Japanese Maple	1F	10.5	F, Root prune along edge of proposed s/w, elevate 8' over proposed s/w
6904	Cherry	2F	14	Air Excavation required, construct 4-5' s/w at curb if construction method avoids root damage
6904	Cherry	3F	18	Tree previously marked for removal due to poor, declining condition
6908	Weeping Japanese Maple	1F-P	8	F
6908	Cherry	1F	1.5	Construct 4-5' s/w to rear of tree, root prune up to edge of proposed s/w
6912	Magnolia	1F	8	Air Excavation required, construct s/w to rear of tree if construction method avoids root damage, elev s/w
6912	Crape Myrtle	2F	10 ms	Air Excavation required, construct s/w to rear of tree if construction method avoids root damage, elev s/w
6912	Callery Pear	3F	13	Air Excavation required, construct s/w to rear of tree if construction method avoids root damage, elev s/w
6916	Kwanzan Cherry	1F	20	Air Excavation required, construct s/w to rear of tree if construction method avoids root damage, elev s/w
6920	Kwanzan Cherry	1F	17	Air Excavation required, construct s/w to rear of tree if construction method avoids root damage, elev s/w
6000 Lenox Rd	Japanese Maple	1F-P	10	F
6000 Lenox Rd	Magnolia	2F-P	21	F
6000 Lenox Rd	Spruce	3F-P	12	F, Note: poor condition
7000	Cherry	1S	6	Construct 4' s/w at curb, root prune up to edge of proposed s/w

ADDRESS	SPECIES	LOCATION	DBH	RECOMMENDATIONS
7000	Cherry	2S	2	Air Excavation required, construct 4-5' s/w at curb if construction method avoids root damage
7000	Cherry	3S	2	Construct s/w to rear of tree, root prune up to edge of proposed s/w
7000	Shrub	4S	15	Remove shrub, construct 4-5' s/w with 4' green space. Note: evergreen planting not permitted in ROW
7000	Shrub	5S	14	Remove shrub, construct 4-5' s/w with 4' green space. Note: evergreen planting not permitted in ROW
7000	Shrub	6S	10	Remove shrub, construct 4-5' s/w with 4' green space. Note: evergreen planting not permitted in ROW
7000	Shrub	7S	10	Remove shrub, construct 4-5' s/w with 4' green space. Note: evergreen planting not permitted in ROW
7000	Shrub	8S	10	Remove shrub, construct 4-5' s/w with 4' green space. Note: evergreen planting not permitted in ROW
7000	Shrub	9S	11	Remove shrub, construct 4-5' s/w with 4' green space. Note: evergreen planting not permitted in ROW
7000	Shrub	10S	10	Remove shrub, construct 4-5' s/w with 4' green space. Note: evergreen planting not permitted in ROW
7000	Shrub	11S	8	Remove shrub, construct 4-5' s/w with 4' green space. Note: evergreen planting not permitted in ROW
7000	Shrub	12S	12	Remove shrub, construct 4-5' s/w with 4' green space. Note: evergreen planting not permitted in ROW
7000	Cherry	1F	7	Air Excavation required, construct s/w to rear of tree if construction method avoids root damage
7000	Cherry	2F	5.5	Air Excavation required, construct s/w to rear of tree if construction method avoids root damage
7004	Linden	1F	2	Construct 4-5' s/w at curb, root prune up to edge of proposed s/w
7008	Yellowwood	1F	2	Construct 4-5' s/w at curb, root prune up to edge of proposed s/w
7100	Sugar Maple	1F	18	Construct 4-5' s/w at curb, root prune up to edge of proposed s/w
7104	Red Maple	1F	12	Air Excavation required, construct s/w to rear of tree if construction method avoids root damage
7104	Cherry	2F	28	Remove: poor condition, structurally compromise, extensive decay in main stem
7108	Crape Myrtle	1F-P	28 ms	F
7108	Cherry	1F	12	Air Excavation required, construct s/w to rear of tree if construction method avoids root damage
7108	Cherry	2F	12	Air Excavation required, construct s/w to rear of tree if construction method avoids root damage
7108	Cherry	3F	7	Air Excavation required, construct s/w to rear of tree if construction method avoids root damage
7108	Cherry	4F	14	Air Excavation required, construct 4-5' s/w at curb if construction method avoids root damage
7108	Redbud	1S	15	F, Root prune along edge of proposed s/w, elevate 8' over proposed s/w

ADDRESS	SPECIES	LOCATION	DBH	RECOMMENDATIONS
7108	Cherry	2S	24	Air Excavation required, construct 4' s/w at curb if construction method avoids root damage
7113	Crape Myrtle	1s	9	Construct s/w to rear of tree if construction method avoids root damage, root prune to edge of s/w
7113	Japanese Maple	2s	2	F
7113	Magnolia	3s	16	F, Root prune along edge of proposed s/w
7113	Southern Magnolia	1F	21	F, Root prune along edge of proposed s/w, elevate 8' over proposed s/w
7200	Linden	1F	21	Air Excavation required, construct s/w to rear of tree if construction method avoids root damage
7200	Linden	2F	20	Air Excavation required, construct s/w to rear of tree if construction method avoids root damage
7204	White Pine	1F	24	Air Excavation required, construct 4-5' s/w at curb if construction method avoids root damage
7204	Magnolia	2F	32	Air Excavation required, construct 4-5' s/w at curb if construction method avoids root damage
7204	White Pine	1F-P	23	F, Root prune up to edge of proposed s/w
7208	Cherry	1F-P	8	F
7208	Cherry	2F-P	5	F
7208	Red Maple	3F-P	5	F
7228 Millwood Ct	Redbud	1F	7	Construct s/w to rear of tree, root prune up to edge of proposed s/w
7228 Millwood Ct	Redbud	2F	9	Construct s/w to rear of tree, root prune up to edge of proposed s/w
7228 Millwood Ct	Swamp White Oak	3F	8	Construct s/w to rear of tree, root prune up to edge of proposed s/w
7228 Millwood Ct	Linden	4F	18	Air Excavation required, construct s/w to rear of tree if construction method avoids root damage
7304	Cherry	1F	19	Remove: installation of s/w to rear of tree would interfere with private tree structural root zone.
7308	Cherry	1F	16	Remove: poor condition, 85% canopy loss
7312	Sugar Maple	1F	12	Air Excavation required, construct s/w to rear of tree if construction method avoids root damage
7312	Sugar Maple	2F	18	Air Excavation required, construct s/w to rear of tree if construction method avoids root damage
7312	Sugar Maple	3F	21	Air Excavation required, construct s/w to rear of tree if construction method avoids root damage
7312	Sugar Maple	4F	22	Air Excavation required, construct s/w to rear of tree if construction method avoids root damage
Highboro Dr				
6609 Whittier Blvd	Cherry	2S	16	Air Excavation required, construct s/w to rear of tree if construction method avoids root damage
6609 Whittier Blvd	Cherry	1S	31	Air Excavation required, construct s/w to rear of tree if construction method avoids root damage
6121	Cherry	2F	4	Air Excavation required, construct s/w to rear of tree if construction method avoids root damage

ADDRESS	SPECIES	LOCATION	DBH	RECOMMENDATIONS
6121	Cherry	1F	3	Air Excavation required, construct s/w to rear of tree if construction method avoids root damage
6117	Cherry	2F	18	Remove: poor condition, extensive trunk decay
6117	Hackberry	1F	6	Air Excavation required, construct s/w to rear of tree if construction method avoids root damage
6113	Crape Myrtle	1F	18 ms	F, Root prune along edge of proposed s/w
6113	Southern Magnolia	2F	19	F, Air Excavation Required, elev 8' over proposed s/w if tree does not require removal
6113	Crape Myrtle	3F	24 ms	F
6109	Cherry	1F	17	Air Excavation required, construct 4' s/w at curb if construction method avoids root damage
6105	Cherry	2F	23	note: tree has been removed
6105	Willow Oak	1F	52	Remove: structural root system too extensive; bridging roots not a viable option
6000 Shady Oak Ln	Cherry	1S	9	Construct 4' s/w at curb, root prune up to edge of proposed s/w
6001 Shady Oak Ln	Weeping Cherry	3S	24	F, Air Excavation Required
6001 Shady Oak Ln	Tree Hydrangea	2S	2	Remove or transplant
6001 Shady Oak Ln	Species	1S	1	Remove or transplant
6001	Cherry	3F	20	Air Excavation required, construct 4' s/w at curb if construction method avoids root damage
6001	Cherry	2F	24	Air Excavation required, construct 4' s/w at curb if construction method avoids root damage
6001	Cherry	1F	21	Air Excavation required, construct 4' s/w at curb if construction method avoids root damage
Kenhill Rd				
6500	Weeping Cherry	1F	7	F
6504	Cherry	1F	13	Air Excavation required, construct 4' s/w at curb if construction method avoids root damage
6508				No trees on county right of way at this address
6512				No trees on county right of way at this address
6516				No trees on county right of way at this address
6522				No trees on county right of way at this address
6528	Crape Myrtle	1F	20	Air Excavation required, construct 4' s/w at curb if construction method avoids root damage
6528	Crape Myrtle	2F	21	F, Root prune along edge of proposed s/w
6528	Crape Myrtle	3F	19	Air Excavation required, construct 4' s/w at curb if construction method avoids root damage
6600				No trees on county right of way at this address
6604				No trees on county right of way at this address
6608				No trees on county right of way at this address
6612	Dogwood	1F-P	11	F, elevate 8' over proposed s/w
6616	Southern Magnolia	1F-P	20	F
6616	Norway Spruce	2F-P	31	F
6620				No trees on county right of way at this address

ADDRESS	SPECIES	LOCATION	DBH	RECOMMENDATIONS
6100 Eastview St				No trees on county right of way at this address
6100 Eastview St	Purpleleaf Chokecherry	1S	13	F, Air Excavation Required, elev 8' over proposed s/w if tree does not require removal
6100 Eastview St	Purpleleaf Chokecherry	2S	13	F, Air Excavation Required, elev 8' over proposed s/w if tree does not require removal
6708				No trees on county right of way at this address
6712	Cherry	1F	17	Air Excavation required, construct s/w to rear of tree if construction method avoids root damage
6712	locust	2F	18	Air Excavation required, construct s/w to rear of tree if construction method avoids root damage
6716	Cherry	1F	41	Air Excavation required, construct s/w to rear of tree if construction method avoids root damage
6720	Southern Magnolia	1F	10	Air Excavation required, construct s/w to rear of tree if construction method avoids root damage
6720	Cherry	2F	28	Air Excavation required, construct s/w to rear of tree if construction method avoids root damage
6720	multi-stem shrub	3F	24	F, elevate 8' over proposed s/w
6720	Cherry	1F-P	37	F, Root prune along edge of proposed s/w
6100 Lenox Rd	Cherry	1S	13	Air Excavation required, construct 4' s/w at curb if construction method avoids root damage
6100 Lenox Rd	Cherry	2S	14	Air Excavation required, construct 4' s/w at curb if construction method avoids root damage
6100 Lenox Rd	Crape Myrtle	3S	5	F, elevate 8' over proposed s/w
7000	Southern Magnolia	1F-P	48	F, Air Excavation Required, elev 8' over proposed s/w if tree does not require removal
7000	Cherry	2F	12	Air Excavation required, construct 4' s/w at curb if construction method avoids root damage
7000	Cherry	3F	18	Air Excavation required, construct 4' s/w at curb if construction method avoids root damage
7000	Cherry	1S	8	F, Root prune along edge of proposed s/w, elevate 8' over proposed s/w
7000	Cherry	2S	12	F, Root prune along edge of proposed s/w, elevate 8' over proposed s/w
7001	Cherry	1S	8	Construct 4' s/w at curb, root prune up to edge of proposed s/w
7001	Cherry	2S	7	Construct 4' s/w at curb, root prune up to edge of proposed s/w
7001	Cherry	3S	9	F, Root prune along edge of proposed s/w, elevate 8' over proposed s/w
7001	Sycamore	1F-P	8	F, elevate 8' over proposed s/w
7017	Ginkgo	1S	6.5	F, Root prune along edge of proposed s/w, elevate 8' over proposed s/w
7012	Crape Myrtle	1S	13 ms	Remove: proposed s/w and ramp construction would compromise health/structural stability of tree, no alternate path available
7012	Crape Myrtle	2S	9 ms	Remove: proposed s/w and ramp construction would compromise health/structural stability of tree, no alternate path available
7012	Crape Myrtle	3S	9 ms	Remove: proposed s/w and ramp construction would compromise health/structural stability of tree, no alternate path available
7012	Oak	4S	6	Air Excavation required, construct s/w to rear of tree if construction method avoids root damage

ADDRESS	SPECIES	LOCATION	DBH	RECOMMENDATIONS
7012	Oak	5S	13	Air Excavation required, construct s/w to rear of tree if construction method avoids root damage
7012	Magnolia	6S	13	Air Excavation required, construct s/w to rear of tree if construction method avoids root damage
7012	Linden	7S	18	Air Excavation required, construct s/w to rear of tree if construction method avoids root damage
7012	Crape Myrtle	8S	5 ms	Construct s/w to rear of tree, root prune up to edge of proposed s/w
7004	Cherry	1F	8	Construct s/w to rear of tree, root prune up to edge of proposed s/w
7004	Cherry	2F	9	Remove: required elevation pruning would remove majority of canopy
7008	Sugar Maple	1F	14	Air Excavation required, construct 4' s/w at curb if construction method avoids root damage
7008	Red Maple	2F	26	F, Air Excavation Required
7008	Cherry	3F	11	Air Excavation required, construct s/w to rear of tree if construction method avoids root damage
7008	Cherry	4F	5.5	Air Excavation required, construct s/w to rear of tree if construction method avoids root damage
7008	Cherry	5F	4	Air Excavation required, construct s/w to rear of tree if construction method avoids root damage
7012	Cherry	1F	2	F
7012	Oak	2F	16	Air Excavation required, construct s/w to rear of tree if construction method avoids root damage
7012	Dogwood	3F	14	Construct s/w to rear of tree, root prune up to edge of proposed s/w
7012	Dogwood	4F	2	Construct s/w to rear of tree, root prune up to edge of proposed s/w
7012	Crape Myrtle	5F	11	Construct s/w to rear of tree, root prune up to edge of proposed s/w
				1. Hand prune roots where noted above.
				2. Any roots 2" diameter or larger exposed by air excavation or by hand pruning activities, that require removal due to sidewalk construction, shall be inspected by ISA certified arborist with the Tree Maintenance Section, Montgomery County, prior to removal.
				3. An approved contractor certified in the State of Maryland for air excavation will be required to conduct all excavation where "Air Excavation required" is noted above.
				4. Arborist (Tree Maintenance Section, Division of Highway Services) shall be notified by Project Manager of root pruning and air excavation schedule prior to scheduled work.
				5. Root pruning shall be to the depth of excavation (no more than 6" depth)
				6. Excavation for proposed concrete sidewalk shall be no more than 6"

Exhibit 5

Montgomery County Government Press Release
Circulated and Published on Twitter, Reddit, Post Social,
Mastodon and NextDoor Social Media Websites on
February 6th and 28th, 2023;

Washington Times
Newspaper and Online Advertisement Circulated
Feb. 22nd and 28th, 2023; and

Highlighted in the MyMC Daily
Newsletter on March 1, 2023

Main, Lori J.

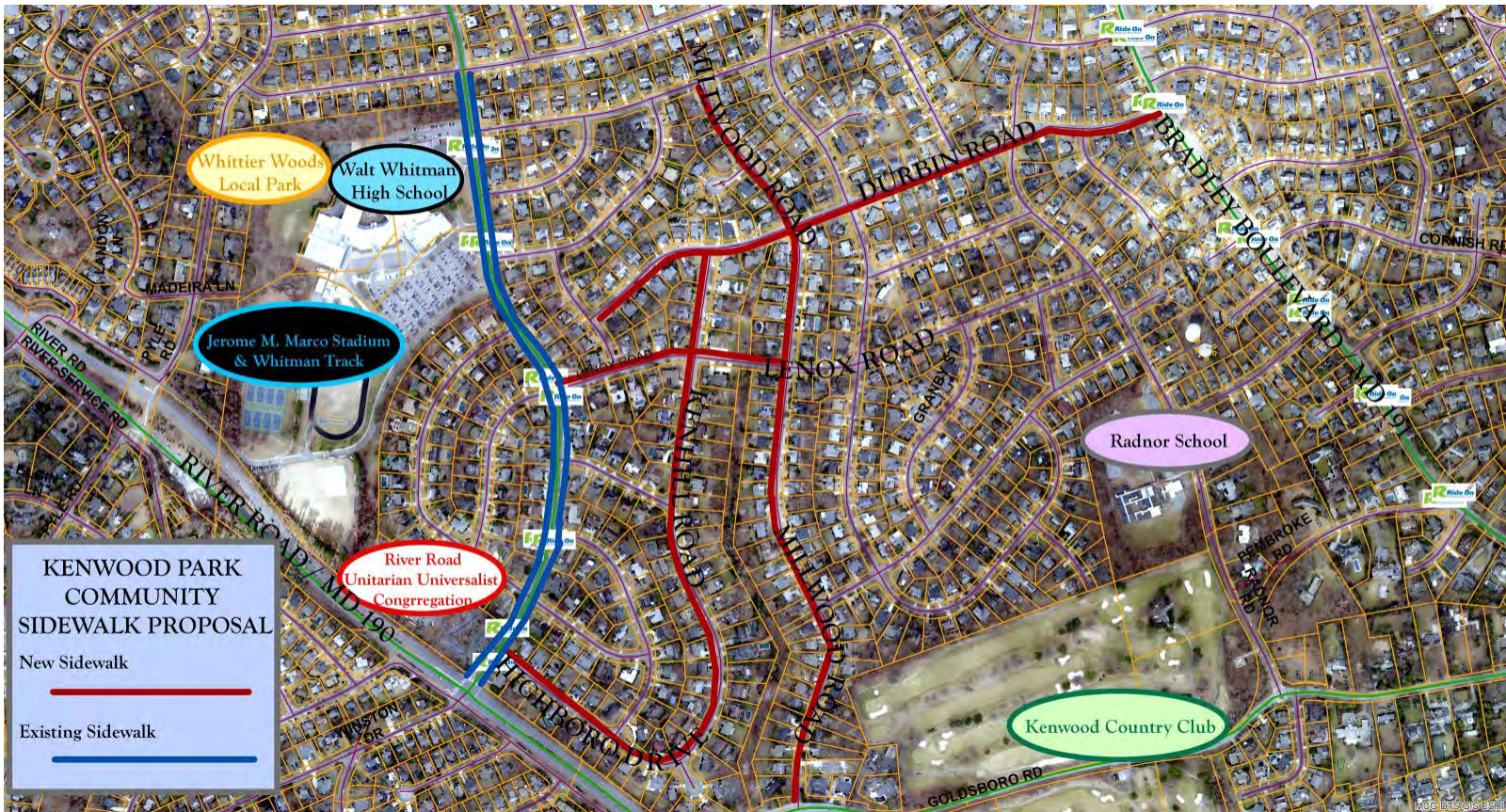
From: Montgomery County, MD <montgomerycountymd@public.govdelivery.com>
Sent: Monday, February 6, 2023 2:32 PM
To: Main, Lori J.
Subject: Virtual Public Hearing on Proposed Kenwood Park Community Sidewalk in Bethesda to be Held on Wednesday, March 1

[EXTERNAL EMAIL]

MCDOT NEWS RELEASE

Montgomery County Department of Transportation

For Immediate Release: Monday, February 6, 2023



Virtual Public Hearing on Proposed Kenwood Park Community Sidewalk in Bethesda to be Held on Wednesday, March 1

On Wednesday, March 1, at 7 p.m., the Montgomery County Department of Transportation (MCDOT) will hold a virtual public hearing to discuss the proposed construction of sidewalks on the following roadways:

- the south, even-numbered side of [Durbin Road](#) from Bradley Boulevard to Hopewood Street;
- the north, odd-numbered side of [Lenox Road](#) from Millwood Road to Whittier Boulevard;
- the west, even-numbered side of [Millwood Road](#) from Plainview Road to Goldsboro Road;
- the west, even-numbered side of [Kenhill Road](#) from Durbin Road to Highboro Drive;
- the northeast, odd-numbered side of [Highboro Drive](#) from Kenhill Road to Whittier Drive.

At the virtual hearing, MCDOT will present the project details, costs, schedules and obtain public testimony. If approved, the completed project will enhance safety for pedestrians, bicyclists and people with disabilities as they travel to nearby schools and facilities. Public input is encouraged and will influence whether MCDOT constructs any, all, or a portion of the proposed sidewalks.

[Online registration](#) is required to attend. On the morning of the meeting, an invitation will be sent via email to those who registered.

Prior to the virtual meeting, the public is encouraged to review the proposal files on the [project website](#).

Written testimony and questions may be submitted to MCDOT’s Sidewalk Program by email to lori.main@montgomerycountymd.gov. Written testimony carries the same weight as oral testimony. All information provided, including questions and testimony will become a matter of public record.

Interpreter services will be provided upon request with five business days advance notice by contacting Lori Jean Main by email at lori.main@montgomerycountymd.gov or call 240-777-7271.

Learn more about MCDOT’s engineering and construction projects by visiting montgomerycountymd.gov/dot-dte.

For more information on MCDOT programs and services visit montgomerycountymd.gov/mcdot, follow @MCDOTNow on [Twitter](#), [Facebook](#) and [Instagram](#) and [subscribe](#) to MCDOT’s “Go Montgomery!” newsletter.

###

Release ID: [23-013](#)
Media Contact: [Emily DeTitta](#), 240-372-2282

You are subscribed to MCDOT News Releases for Montgomery County Maryland.



This email was sent to you using GovDelivery, on behalf of [Montgomery County, Maryland Government](#). As a subscriber, you agree that we may contact you by email and use the information you submit as described in the [Montgomery County Privacy Policy](#).

Please do not reply to this email. Replies to this email will not be responded to or read. If you have any questions or comments, please visit the MC311 Portal at www.mc311.com or call 3-1-1 (240-777-0311 if outside the County) to speak with a Customer Service Representative.

If you would like to unsubscribe from some email newsletters from Montgomery County, click [Manage Preference](#) and make updates. If you would like to unsubscribe from all email newsletters and remove your account information, click [Unsubscribe to all](#) or [Help](#) for any further information.

This email was sent to Lori.Main@montgomerycountymd.gov using GovDelivery Communications Cloud on behalf of: Montgomery County Maryland · Monroe Street · 13th Floor Rockville · Rockville, MD 20850



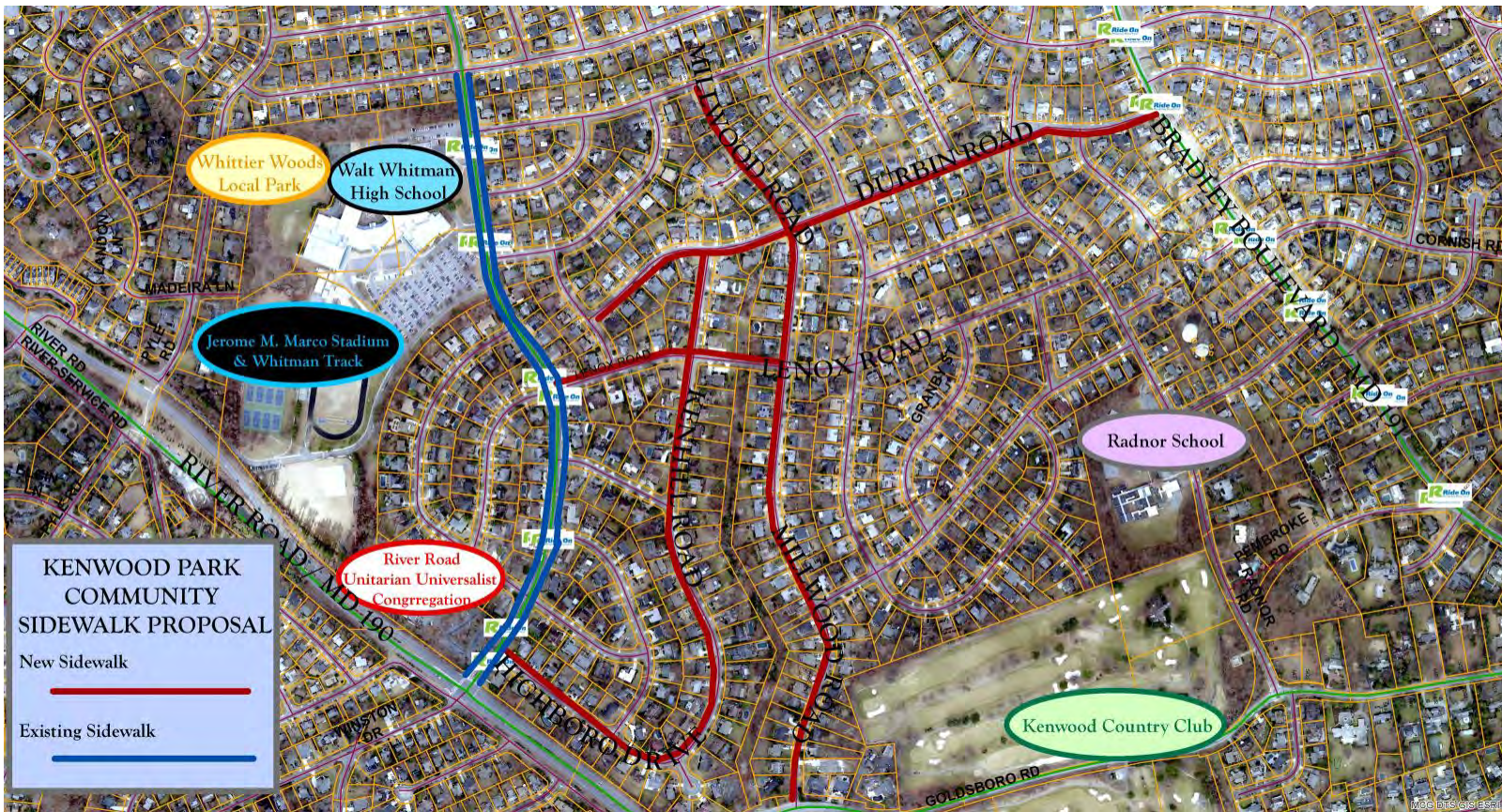
Main, Lori J.

From: Montgomery County, MD <montgomerycountymd@public.govdelivery.com>
Sent: Tuesday, February 28, 2023 12:21 PM
To: Main, Lori J.
Subject: Virtual Public Hearing on Proposed Kenwood Park Community Sidewalk in Bethesda to be Held on Wednesday, March 1

[EXTERNAL EMAIL]

MCDOT NEWS RELEASE

Montgomery County Department of Transportation



Virtual Public Hearing on Proposed Kenwood Park Community Sidewalk in Bethesda to be Held on Wednesday, March 1

On Wednesday, March 1, at 7 p.m., the Montgomery County Department of Transportation (MCDOT) will hold a virtual public hearing to discuss the proposed construction of sidewalks on the following roadways:

- the south, even-numbered side of [Durbin Road](#) from Bradley Boulevard to Hopewood Street;
- the north, odd-numbered side of [Lenox Road](#) from Millwood Road to Whittier Boulevard;
- the west, even-numbered side of [Millwood Road](#) from Plainview Road to Goldsboro Road;
- the west, even-numbered side of [Kenhill Road](#) from Durbin Road to Highboro Drive;
- the northeast, odd-numbered side of [Highboro Drive](#) from Kenhill Road to Whittier Drive.

At the virtual hearing, MCDOT will present the project details, costs, schedules and obtain public testimony. If approved, the completed project will enhance safety for pedestrians, bicyclists and people with disabilities as they travel to nearby schools and facilities. Public input is encouraged and will influence whether MCDOT constructs any, all, or a portion of the proposed sidewalks.

[Online registration](#) is required to attend. On the morning of the meeting, an invitation will be sent via email to those who registered.

Prior to the virtual meeting, the public is encouraged to review the proposal files on the [project website](#).

Written testimony and questions may be submitted to MCDOT’s Sidewalk Program by email to lori.main@montgomerycountymd.gov. Written testimony carries the same weight as oral testimony. All information provided, including questions and testimony will become a matter of public record.

Interpreter services will be provided upon request with five business days advance notice by contacting Lori Jean Main by email at lori.main@montgomerycountymd.gov or call 240-777-7271.

Learn more about MCDOT’s engineering and construction projects by visiting montgomerycountymd.gov/dot-dte.

For more information on MCDOT programs and services visit montgomerycountymd.gov/mcdot, follow @MCDOTNow on [Twitter](#), [Facebook](#) and [Instagram](#) and [subscribe](#) to MCDOT’s “Go Montgomery!” newsletter.

###

Release ID: [23-013](#)
Media Contact: [Emily DeTitta](#), 240-372-2282

You are subscribed to MCDOT News Releases for Montgomery County Maryland.



This email was sent to you using GovDelivery, on behalf of [Montgomery County, Maryland Government](#). As a subscriber, you agree that we may contact you by email and use the information you submit as described in the [Montgomery County Privacy Policy](#).

Please do not reply to this email. Replies to this email will not be responded to or read. If you have any questions or comments, please visit the MC311 Portal at www.mc311.com or call 3-1-1 (240-777-0311 if outside the County) to speak with a Customer Service Representative.

If you would like to unsubscribe from some email newsletters from Montgomery County, click [Manage Preference](#) and make updates. If you would like to unsubscribe from all email newsletters and remove your account information, click [Unsubscribe to all](#) or [Help](#) for any further information.

This email was sent to Lori.Main@montgomerycountymd.gov using GovDelivery Communications Cloud on behalf of: Montgomery County Maryland · Monroe Street · 13th Floor Rockville · Rockville, MD 20850



**PUBLIC HEARING FOR
PROPOSED SIDEWALK CONSTRUCTION**

**KENWOOD PARK COMMUNITY /
Bethesda, Maryland**

- the south, even-numbered side of **Durbin Road** from **Bradley Boulevard** to **Hopewood Street**;
- the north, odd-numbered side of **Lenox Road** from **Millwood Road** to **Whittier Boulevard**;
- the west, even-numbered side of **Millwood Road** from **Plainview Road** to **Goldsboro Road**;
- the west, even-numbered side of **Kenhill Road** from **Durbin Road** to **Highboro Drive**;
- the northeast, odd-numbered side of **Highboro Drive** from **Kenhill Road** to **Whittier Drive**.

Pursuant to Section 49-53 of the Montgomery County Code (2004) as amended, a *virtual* public hearing shall be held on **WEDNESDAY, MARCH 1, 2023, at 7:00 p.m.** The hearing will be broadcast over the internet via Zoom.

Please register to attend:

<https://montgomerycountymd.gov/dot-dte/sidewalk/KenwoodPark.html>



To register, paste the above URL into your browser or follow the above QR code using the camera on your cell phone, and click on the “Schedule” tab of the project website where you will find a link to register to attend the hearing. **Registration closes on March 1, 2023, at 5:30 pm.** On the morning of the March 1st hearing, MCDOT will email the Zoom link and passcode to all registrants.

Audio and video of the hearing will be recorded, a link to which will be posted on the SIDEWALK PROGRAM’s webpage on the MCDOT website: <https://montgomerycountymd.gov/dot-dte/sidewalk/KenwoodPark.html>.

The sole purpose of a public hearing is to allow residents an opportunity to present oral and/or written comments concerning construction of a sidewalk that provides disabled citizens, pedestrians and bicyclists safer travel to schools and nearby public attractions or facilities. The information presented helps determine whether or not to recommend constructing a portion of, or the entire proposed project. The following hearing will begin at **7:00 p.m.** and run continuously until all information is presented and the hearing has concluded.

WRITTEN TESTIMONY CARRIES THE SAME WEIGHT AS ORAL TESTIMONY. Written testimony for consideration may be submitted to: lori.main@montgomerycountymd.gov . Please visit the Sidewalk Program website, URL and QR code above, to obtain digital copies of the sidewalk proposal files.

Interpreter services will be provided upon request. Please allow (5) business days advance notice when requesting interpreter services.

Exhibit 6

Written Testimony Supporting Sidewalk Installation

Main, Lori J.

From: ELEANOR BALABAN <ELEANOR.BALABAN@Longandfoster.com>
Sent: Tuesday, February 7, 2023 6:36 PM
To: Main, Lori J.
Subject: Kenwood park

[EXTERNAL EMAIL]

Sidewalks are always a good idea!

Sent from my iPad. Please excuse my brevity
Eleanor Balaban
Long and Foster
4650 East West Hwy, Bethesda
301-229-7990
301-907-7600
Licensed in Md and DC

ALERT! Long & Foster Real Estate will never send you wiring information via email or request that you send us personal financial information by email. If you receive an email message like this concerning any transaction involving Long & Foster Real Estate, do not respond to the email and immediately contact your agent via phone.

The contents of this e-mail message may be privileged and/or confidential. If you are not the intended recipient, any review, dissemination, copying, distribution or other use of the contents of this message or any attachment by you is strictly prohibited. If you receive this communication in error, please notify us immediately by return e-mail, and please delete this message and all attachments from your system.

Warning: If you receive an email from anyone concerning a transaction involving Long & Foster Companies ("Long & Foster") which requests that you wire funds or that you provide nonpublic personal information by unsecured return email, do not respond to the message. To protect yourself, immediately call your real estate agent or other contact at Long & Foster.

ô

SIDEWALK PROGRAM

Division of Transportation Engineering

100 Edison Park Drive, 4th Floor · Gaithersburg, MD 20878 · 240-777-7270
MCDOT.DTE.Sidewalk@montgomerycountymd.gov
Lori.Main@montgomerycountymd.gov

WRITTEN TESTIMONY FEEDBACK SURVEY FORM* SIDEWALK CONSTRUCTION

Location:

- the south, even-numbered side of **Durbin Road** from **Bradley Boulevard** to **Hopewood Street**;
- the north, odd-numbered side of **Lenox Road** from **Millwood Road** to **Whittier Boulevard**;
- the west, even-numbered side of **Millwood Road** from **Plainview Road** to **Goldsboro Road**;
- the west, even-numbered side of **Kenhill Road** from **Durbin Road** to **Highboro Drive**;
- the northeast, odd-numbered side of **Highboro Drive** from **Kenhill Road** to **Whittier Drive**.

COMMENTS or CONCERNS:

We are excited about the addition of sidewalks to our neighborhood on Durbin Road. Our only question is what the depth into our property will be and when construction would start.

Property Owner(s) Name and Address:

Nina and Noah Merlin
5706 Durbin Road
Bethesda, MD 20817

If questions, please provide email address or telephone number:

nina.charness@gmail.com /
301 785 0377

NOTE: The Sidewalk Program welcomes all comments and input, and every attempt will be made to address your concerns. Unfortunately, due to the large volume of correspondence received daily, we reply to questions only. Please note, if you are unable to respond prior to the deadline, your comments will be accepted thereafter.

*This form is for your convenience; you are not required to use this form when submitting your comments.

Please mail or e-mail our office by:

Friday, March 29, 2023

Thank you!

From: [Alex Bond](#)
To: [Main, Lori J.](#)
Cc: [Colleen](#)
Subject: Kenwood Park Community Sidewalk Project
Date: Tuesday, February 21, 2023 11:11:55 AM

[EXTERNAL EMAIL]

Ms. Main -

We strongly support Montgomery County's Kenwood Park Sidewalk Community Proposal. Having additional sidewalks in the community will significantly increase safety for pedestrians, which is important given the significant number of children and families that walk around the neighborhood frequently. We have young children and would appreciate the increased safety additional sidewalks would provide.

As Montgomery County continues to implement plans to build additional sidewalks, it should consider expanding and building additional sidewalks throughout the neighborhood. This would be especially helpful if new sidewalks could connect to the existing sidewalks on Radnor Road, and also build new sidewalks on Tanglewood and Lenox Roads, which do not have any sidewalks but do have existing school bus routes on them and a high incidence of pedestrian traffic which are primarily young children. More sidewalks would help these children be safer going to and from the bus stops in the mornings and afternoons.

Thank you!

Alex and Colleen Bond
5812 Marbury Road

--
Alex Bond
(c) 240-505-6284

From: [Jennifer Finn](#)
To: [Main, Lori J.](#)
Subject: 5815 Bradley Blvd
Date: Wednesday, January 25, 2023 1:36:22 PM

[EXTERNAL EMAIL]

I LOVE the idea of sidewalks!! This area is not walkable at ALL. And all of the people are so concerned with the cutting down of the oversized trees. When we can plant beautiful smaller trees. “Sidewalks separated from the roadway are the preferred accommodation for pedestrians. Sidewalks provide many benefits including **safety, mobility, and healthier communities**. In addition to reducing walking along roadway crashes, sidewalks reduce other pedestrian crashes.” Sidewalks also encourage pedestrians to get outside and workout, and be active and neighbors to interact- our community could benefit from some kindness.

Let's make this area safe to walk!!

--

Jennifer Finn, MA, LCPC
Chesapeake Counseling Associates, LLC

From: [Matt Bai](#)
To: [Gonzales, Robert](#); [Main, Lori J.](#)
Subject: Kenwood Park
Date: Monday, February 27, 2023 2:21:57 PM

[EXTERNAL EMAIL]

Hi Robert and Lori, I'm a Kenwood Park resident. In the past, I've written about some local issues in the neighborhood, such as here:

<https://www.washingtonpost.com/opinions/2022/08/29/bethesda-neighborhood-school-land-sits-unused/>

My wife and I can't make the hearing you all are convening on the sidewalk issue, but I did want to send a quick note in support of the proposal. As far as I know, sidewalks *always* make a community better and safer, and I'm not aware of any instance where they've lowered quality of life. My two children have grown up here, and I worried about them constantly with all the speeding traffic — I'd love for new families with young kids to feel safer. I only wish all of our streets were covered in the proposal and not just the busiest ones.

To be honest, I have a hard time grasping why anyone is *against* sidewalks. I hear a lot about trees, but this isn't "The Lorax" — my understanding is that the county will replace the trees with care and professionalism. I hear some stuff about losing land area, but that's also sort of baffling, since the narrow strip of land in question belongs to the county in the first place and isn't useful for much of anything. I suppose some people are suspicious of change in general and government action in particular, but I feel certain they do not comprise anything like a majority in our neighborhood.

Trees are replaceable, children are not. Please push on with your plan, and know that most of us appreciate very much the work that you're doing to improve our community. Thanks for listening.

Matt Bai

March 1, 2023, 7:00 p.m. Kenwood Park Community Sidewalk Proposal Meeting
Fran Chevarley, 5860 Marbury Road, tedandfran@comcast.net
Written Testimony

My sincere thanks to everyone in Kenwood Park and in the county who are part of the sidewalk proposal discussions.

My thoughts about sidewalks are:

When we moved to Kenwood Park (KP) years ago I really liked the KP neighborhood feel resulting from its design without sidewalks and with its canopies of flowering cherry trees similar to the Kenwood neighborhood. It was explained to me that the beautiful canopy of flowering double cherry trees (Kwanzan trees) in KP were by design to differentiate KP from Kenwood that has flowering single cherry trees (Yoshima) that are on the mall.

Whatever the sidewalk plans turn out to be, I think it is very important for KP to continue to support the canopies of flowering double cherry trees (Kwanzan trees) that has always been part of the KP design.

Before finalizing sidewalk plans I would like KP to consider: ways to prevent/reduce KP cut-through traffic; and ways to reduce traffic speed using residential traffic calming techniques. If KP were able to better prevent/reduce cut-through traffic and also reduce traffic speed, then this may help inform better final decisions about the necessity and placement of sidewalks in KP.

I noticed that Kenwood has a number of traffic signs I assume are for preventing/reducing cut-through traffic. I don't have contacts in Kenwood, but it may be worthwhile to check with Kenwood on how effective Kenwood has been in reducing traffic speed, and in preventing/reducing cut-through traffic with their traffic signs; and to learn the process they used for doing this. This would help inform KP, if KP would want to do this.

From: [Naz Ghassemian](#)
To: [Main, Lori J.](#)
Subject: Kenwood park sidewalks
Date: Monday, February 20, 2023 11:19:32 AM

[EXTERNAL EMAIL]

Dear Lori,

I just want to express that my family is for the sidewalks. We live on Highboro. Thank you.

Sincerely,
Naz Ghassemian

From: [Ken Wire](#)
To: [Friedson's Office, Councilmember](#); [Albornoz's Office, Councilmember](#); [Glass's Office, Councilmember](#); [Jawando's Office, Councilmember](#); [Gonzales, Robert](#); [Main, Lori J.](#)
Subject: Kenwood Park Sidewalk Improvements
Date: Tuesday, February 28, 2023 9:47:55 PM

[EXTERNAL EMAIL]

Councilmembers,

I fully support the County staff proposal for new sidewalks in Kenwood Park. Sidewalks are essential for pedestrian safety in our community which has a high number of students that walk to school.

The staff materials posted online are very thorough and provide complete background on project impacts and schedule. The County proposal to plant three trees for every tree removed will increase the canopy coverage in our community.

Please support the project as currently proposed by staff.

Thank you,

Ken Wire
6112 Shady Oak Lane
Bethesda, MD 20817

From: [Elizabeth Haile](#)
To: [Main, Lori J.](#)
Subject: Kenwood Park sidewalk installation
Date: Sunday, January 22, 2023 9:25:24 PM

[EXTERNAL EMAIL]

I am a resident of Kenwood Parrk and while I do not live on one of the affected streets, we have two school age children who walk and bike some of these streets on the way to and from school, and we frequently walk our dog on these streets.

We are in full support of the plan to install sidewalks. Especially for Lenox and Millwood. Both of these streets have had accidents with cars or buses and children. My daughter was hit by a car while riding her bike on Lenox last year. Cars in this neighborhood who are cutting through far exceed the speed limit and it is not safe.

The neighborhood has been asking for speed calming measures for decades and we are so happy to see this step being taken. Thank you for considering the well being of the whole neighborhood.

Elizabeth and Chris Haile
6116 Shady Oak Lane
Bethesda MD 20817

Pete Sather

6516 Kenhill Road,
Bethesda, MD 20817

31 January 2023

Director Christopher Conklin
Department of Transportation
101 Monroe St, 10th Floor
Rockville, MD 20850

THANK YOU MR GONZALES, WE
DESRIBATELY NEED THESE SIDEWALKS.
IT WILL DO GREAT THINGS FOR OUR
COMMUNITY!!
- PETE

Dear Director Conklin,

Our family was very pleased to receive the information regarding the sidewalk installation in our neighborhood. The Kenwood Park Community Sidewalk Proposal is a thoughtful, complete, and thorough proposal. Hats off to Manager Gonzales and his staff for putting this together, it is great work!!!

We have three children in our family and walking along our street and other streets is difficult due to the lack of sidewalks. Just yesterday we were walking and saw a family with a stroller that had had to walk in the street around a parked car while another car was driving by; this is dangerous. The new sidewalks help with the important "Safety and Vision Zero" initiative. Many drivers do not respect the speed limits on our streets, sidewalks will help keep us safe.

Unfortunately, on our neighborhood listserv and Nextdoor there are some ridiculous comments against this proposal. I am completely shocked by the comments, the unprofessionalism, ridiculous theories and general tone. I will not talk any more about it, it is just not worth it. I am personally writing to you to let you know that WE WANT THESE SIDEWALKS AND WE NEED THESE SIDEWALKS!!! Our family appreciates the hard work that you and your staff complete. We have also encountered and interacted with Montgomery County Police and Montgomery County Fire and Rescue personnel. In all cases everyone from the county has been incredibly professional and helpful. It takes a special kind of county employee to not get mad when they are called out because you burned the bacon which tripped the home fire alarm. Somehow the Simplisafe features are beyond me and I forgot to call off the MCFRS; not to worry, my family designation is now "Bacon Boy." Thank you all very much!!!

Sincerely,


Pete Sather - petesather@gmail.com

CC: Marc Erlich, Montgomery County Executive
Captain Amy Daum, District 2 Commander, Montgomery County Police Department
Chief Scott Goldstein, Fire Chief, Montgomery County Fire and Rescue Service
Council Member Andrew Friedson, District 1
Robert Gonzales, Manager, Annual Sidewalk Program

SIDEWALK PROGRAM

Division of Transportation Engineering

100 Edison Park Drive, 4th Floor · Gaithersburg, MD 20878 · 240-777-7270

MCDOT.DTE.Sidewalk@montgomerycountymd.gov

Lori.Main@montgomerycountymd.gov

WRITTEN TESTIMONY FEEDBACK SURVEY FORM* SIDEWALK CONSTRUCTION

Location:

- the south, even-numbered side of **Durbin Road** from **Bradley Boulevard** to **Hopewood Street**;
- the north, odd-numbered side of **Lenox Road** from **Millwood Road** to **Whittier Boulevard**;
- the west, even-numbered side of **Millwood Road** from **Plainview Road** to **Goldsboro Road**;
- the west, even-numbered side of **Kenhill Road** from **Durbin Road** to **Highboro Drive**;
- the northeast, odd-numbered side of **Highboro Drive** from **Kenhill Road** to **Whittier Drive**.

COMMENTS or CONCERNS:

Finally! That's the biggest problem with this neighborhood - not enough sidewalks. Every street should have sidewalks. It's very very dangerous to have people walking, riding bikes, running, walking dogs in the street. And it's in the middle of the street because there are so many cars parked on the streets that they can't walk to the side. The danger continues because people like to walk as couples or in groups SIDE-BY-SIDE. The entire street is people! At night, forget about it. Few people wear reflective clothing and still walk in the street. This improvement is long overdue. People who complain about trees being removed are nonsensical. Humans are more important than tree lives.

Property Owner(s) Name and Address:

Valene + Spencer Hollis
6529 Kenhill Rd
Bethesda, MD 20817

If questions, please provide email address or telephone number:

NOTE: The Sidewalk Program welcomes all comments and input, and every attempt will be made to address your concerns. Unfortunately, due to the large volume of correspondence received daily, we reply to questions only. Please note, if you are unable to respond prior to the deadline, your comments will be accepted thereafter.

*This form is for your convenience; you are not required to use this form when submitting your comments.

Please mail or e-mail our office by:

Friday, March 29, 2023

Thank you!

Main, Lori J.

From: Valerie Hollis <valerie@hollisweb.net>
Sent: Thursday, February 9, 2023 8:00 AM
To: Lillian Klein Abensohn
Cc: Main, Lori J.; Kenwood Park Citizens Association
Subject: Re: [KPCA] County Hearing on Proposed Sidewalks - PROPERTY ADDRESS REQUIRED

Follow Up Flag: Follow up
Flag Status: Completed

[EXTERNAL EMAIL]

If you think we don't need sidewalks, go to within a block of WWHS at 730am and/or Pyle MS at 8am.

With no sidewalks, kids are walking all over the side streets with AirPods in so they can't hear the chaos around them.

I've been driving for more years than I'd like to admit and it's scary for me to be in that situation. What must new/less experienced drivers be feeling?

Why do so many of you value trees over kids? And seem like you want to wait til someone is killed before you can agree/admit we need sidewalks? I hope it's not one of my kids who needs to be hit before you see the gravity of the situation.

And yes I just walked back into the house from dropping off my teens so my blood pressure is through the roof and my patience done.

Valerie Hollis
Kenhill Rd

Sent from my iPhone, of course

On Feb 8, 2023, at 7:17 PM, Lillian Klein Abensohn via KPCA <kpca@listserve.com> wrote:

Of course, Lori:

Lillian Klein Abensohn
7108 Millwood Road
Bethesda, MD 20817

FYI: This plan will eliminate two Kwanzan and three Yoshino mature cherry trees as well as beautiful landscaping bushes; the sidewalks will cut a sizable amount of lawn. My property and the neighborhood will be less attractive and probably lose value. This is a BAD proposal; the money could be better spent on more traveled roads.

Thank you,

Lillian Klein Abensohn

Main, Lori J.

From: Patricia McAllister <phmedu@msn.com>
Sent: Wednesday, February 15, 2023 9:52 AM
To: Main, Lori J.
Cc: John McAllister
Subject: Kenwood Park Community Sidewalk Proposal

[EXTERNAL EMAIL]

Dear Mr. Gonzales,

We are writing in **opposition** to the sidewalk installation program proposed for Kenwood Park, Bethesda, specifically on the following roadways: Durbin Road, Kenhill Road and Highboro Drive as described in your letter of January 17, 2023.

We are opposed to the proposed sidewalk installation program for the following reasons:

1. The proposal calls for the removal of 136 mature trees which would result in a significant decline in the neighborhood's tree canopy and shade and an overall warmer environment. Trees slated for removal include a number of stately Magnolia trees that are 40-50 years old, Pin Oak trees of the same vintage, Willow Oak trees, Japanese Maples that take years to mature and numerous mature cherry trees that are a signal feature of Kenwood Park. Unfortunately, Kenwood Park is already experiencing a significant loss of trees due to tear down projects and this loss of trees would be exacerbated by the loss of an additional 136 trees. We understand the county proposes to plant 3 trees for every tree removed. We also understand these will be small sapling trees that will take 10-20 years to grow and to provide the type of canopy, shade and overall ascetic beauty that current exists in the neighborhood.
2. One rationale for the sidewalk installation program provided in your letter is proximity to pedestrian generators such as parks, religious institutions, swimming pools, shops and public transportation but your letter does not provide any examples of these generators. We are aware of one school and one religious institution nearby but can not identify any parks, swimming pool or shops that would qualify as proximate.
3. **The scale of the proposed installation project is excessive. The Kenwood Park Citizens Association (KPCA) originally proposed the installation of sidewalks on Millwood Road and Lenox Road as these two streets are the main walkways into the neighborhood.**

Thus, as a compromise proposal we encourage the MCDOT to proceed with installing sidewalks on Millwood Road and Lenox Road only, specifically Millwood Road from Goldsboro Rd. to Lenox Rd., and Lenox Road from Millwood Rd. to Whittier Blvd. In addition, we request that the MCDOT undertake a study to examine the feasibility of installing sidewalks on Bradley Lane, Goldsboro Road and River Road, all of which have no sidewalks and are feeder roads directly into Kenwood Park.

We appreciate your consideration of our views and look forward to hearing from you.

Sincerely,

Patty and John McAllister
6713 Pemberton Street
Bethesda, MD 20817
phmedu@msn.com
301-807-5402

Sent from [Mail](#) for Windows

Exhibit 7

Written Testimony Opposing the All or a Portion of the Proposed Sidewalks

From: [Adam Lenkin](#)
To: [Main, Lori J.](#)
Subject: 5720 Durbin Rd
Date: Friday, February 3, 2023 9:07:05 AM

[EXTERNAL EMAIL]

Hi Lori:

I fully oppose this sidewalk construction proposal. Specially on my property, there are issues with a telephone pole (cannot be moved) and a large rectangular sewer cap (cannot be moved)...moreover, there are TWO circular WSSC caps, also IN THE EXACT location of this proposed sidewalk.

They do not need a sidewalk on my block of Durbin Rd. It should start after RADNOR going away from Bradley. Makes far more sense.

This is not approved yet, is it??

Thanks.

Adam

Sent from my iPhone

Sidewalk Program –
Division of Transportation and Engineering
100 Edison Park Drive, 4th Floor, Gaithersburg Md

January, 25, 2023

Written Testimony Feedback for Sidewalk Construction

To Whom It May Concern,

As a resident of Kenwood Park, and as someone who walks along Durbin Rd, daily, I do not see the need for the sidewalk along Durbin Rd in Bethesda. I believe that Durbin Rd is a wide enough to already safely allow both vehicle and pedestrian traffic and that resources would be more effectively served by installing a crosswalk and traffic light at the intersection of Durbin and Bradley, where vehicle accidents have been known to occur. **I would like to know if there will also be a traffic light installed at that intersection, given the additional foot traffic that a sidewalk would encourage at that site?**

I am particularly, concerned about the removal of older shade trees, such as th oak tree, which I had planted when I moved in, and has taken almost 20 years to grow to maturity. I would like to point out that although, the sidewalk proposal claims every tree removed can be replaced with three saplings which will remove just as much CO₂, the reality is that the frontage of most of our homes can only accommodate a total of two trees. **Will the County be willing to commit to the watering and care of these trees in the first few months after planting to insure their survival, given the resulting decrease in canopy?**

I also do not understand the decision to place the sidewalks along the side of Durbin Rd where telephone poles and overhead wires are located, making the placement of the sidewalk less flexible. **Why was the telephone pole side of the street chosen? Please explain.**

I would appreciate if someone could address these 3 issues of concern in writing.

Thank you

Sinaly Roy
5724 Durbin Rd
Bethesda, MD 20817
Sinalymroy@gmail.com

From: [Michael Harrison](#)
To: [DTE SIDEWALK](#)
Subject: my view on sidewalk plan for Kenwood Park
Date: Friday, February 10, 2023 8:41:36 AM

[EXTERNAL EMAIL]

I oppose the current county plan for construction of sidewalks on several streets in Kenwood Park, including but not limited to Durban, Lenox, and Millwood. The plan proposes uprooting many trees in order to build the proposed sidewalks. Although I favor sidewalk construction to protect pedestrians, I see no reason whatsoever to upgrade any mature trees in order to provide sidewalks. Hence, I am fundamentally opposed to the current plan.

I call upon the county to propose, **an entirely new, alternative plan** in which existing trees are bypassed by moving the sidewalks and their boundary areas into the current paved street areas and creating bays for parking in between areas where the sidewalk is extended into the current street. Such an arrangement would not only provide sidewalks while preserving trees. It would also slow traffic flow, which will reduce through traffic in the neighborhood. Speeding down the currently unnecessarily wide streets is in and of itself a threat to cyclist and pedestrian safety that can be addressed by this proposed alternative plan.

Michael Harrison
5828 Tanglewood Dr.
Bethesda MD 20817
phone available on request.

SIDEWALK PROGRAM

Division of Transportation Engineering

100 Edison Park Drive, 4th Floor · Gaithersburg, MD 20878 · 240-777-7270

MCDOT.DTE.Sidewalk@montgomerycountymd.gov

Lori.Main@montgomerycountymd.gov

WRITTEN TESTIMONY FEEDBACK SURVEY FORM* **SIDEWALK CONSTRUCTION**

Location:

- the south, even-numbered side of **Durbin Road** from **Bradley Boulevard** to **Hopewood Street**;
- the north, odd-numbered side of **Lenox Road** from **Millwood Road** to **Whittier Boulevard**;
- the west, even-numbered side of **Millwood Road** from **Plainview Road** to **Goldsboro Road**;
- the west, even-numbered side of **Kenhill Road** from **Durbin Road** to **Highboro Drive**;
- the northeast, odd-numbered side of **Highboro Drive** from **Kenhill Road** to **Whittier Drive**.

COMMENTS or CONCERNS:

The safety of pedestrian is of the utmost importance to all of us, but the current proposal is not well-thought out to address the safety issues, while preserving the environment (and it should not be driven by budget constraints). It is important to preserve the trees of the neighborhood. There are numerous options many of the residents have proposed, such as a narrower sidewalk, taking a bit of the current road, going around the trees. That said, we also need to be careful that the roads are not as large as they look when someone parks on one side of the road, and a driver needs to avoid a pedestrian passing by at the same time.

Our house is affected on the Millwood side, and this will take a big chunk of our driveway. [The concrete sidewalk will look at odds with our existing driveway, and I would appreciate to know how the county plans to address that.](#) We are of the view that the sidewalk should not create additional expense to homeowners at a time all families are feeling the hardship. Lastly, if any changes are made to the current sidewalk map, I do hope the new drawing will not just shift to another side of a street for whatever reason.

Property Owner(s) Name and Address:

Kangni Kpodar and Miha Andrianaivo
6000 Lenox Rd

If questions, please provide email address or telephone number:

kkpodar@gmail.com / 202 415 7058

NOTE: The Sidewalk Program welcomes all comments and input, and every attempt will be made to address your concerns. Unfortunately, due to the large volume of correspondence received daily, we reply to questions only. Please note, if you are unable to respond prior to the deadline, your comments will be accepted thereafter.

*This form is for your convenience; you are not required to use this form when submitting your comments.

Please mail or e-mail our office by:

Friday, March 29, 2023

Thank you!

From: [susan.wertheim](mailto:susan.wertheim@montgomerycountymd.gov)
To: [amit.dalal](mailto:amit.dalal@montgomerycountymd.gov)
Cc: [amit.dalal](mailto:amit.dalal@montgomerycountymd.gov)
Subject: Kenwood Park Sidewalk Program Written Testimony
Date: Sunday, February 26, 2023 4:02:41 PM

[EXTERNAL EMAIL]

Written testimony submitted by Susan Wertheim and Amit Dalal
6100 Lenox Rd, Bethesda, MD
Re: Kenwood Park Sidewalk Program Proposal

We want to register our opposition to this proposal as currently conceived. We respectfully request that the county staff look into design alternatives that would save more trees and provide a greener approach to pavement installation while ensuring the safety and walkability features that sidewalks might provide. Here are our points:

1. Our understanding is that Kenwood Park residences c. 1950's and 1960's were developed in response to housing exclusions in nearby communities like Kenwood. Our house was built in 1962 and is very much intact. We have lived here since 2000. Kenwood Park always prided itself on the park-like quality of its landscapes especially the cherry trees. We deliberately selected Kwanzan cherry trees shown here to adhere to the community standard. Our thinking was to help maintain a unified streetscape with the other nearby cherry trees. This proposal destroys that streetscape unity and the legacy of the Kwanzan cherries - Kenwood Park's answer to the typical Kenwood Yoshino cherries.
 2. We are specifically concerned with the destruction of the two 16-18" caliper Kwanzan cherry trees in the photos below. The survey from 2020 is outdated and we request tge input of an arborist about why destruction of these two healthy trees is the only solution for the Kenhill sidewalk. Our Kwanzan cherry trees were planted by us about 15-20 years ago. They sit 7' and 8' back from the back of curb.
 3. We request that you consider permeable pavement, reduction of the sidewalk width and no tree lawn 3' strip to reduce the root damage and save the trees.
 4. We feel very certain that a more considerate and well thought out design solution that works with the trees, explores alternatives to minimize destruction, and adopts better and more current ways to provide safe sidewalks is the only way to
 5. As our neighbor Linda Greer has written, "The current sidewalk proposal for Kenwood Park overlooks a lot of new thinking about how to achieve pedestrian safety while also greening a neighborhood. It is rightfully quite controversial among our residents because it comes with a huge downside of radically changing the treescape of the neighborhood. And it is not cheap; the county has estimated the cost at \$1.3 million, much of which will be used to take down those 100+ trees.
- There is a great opportunity here for Kenwood Park residents to become a model for green roadways in Montgomery County that provide it all -- enhanced safety for residents and protected landscape and trees."

Conclusion: Please revise and resubmit this proposal.

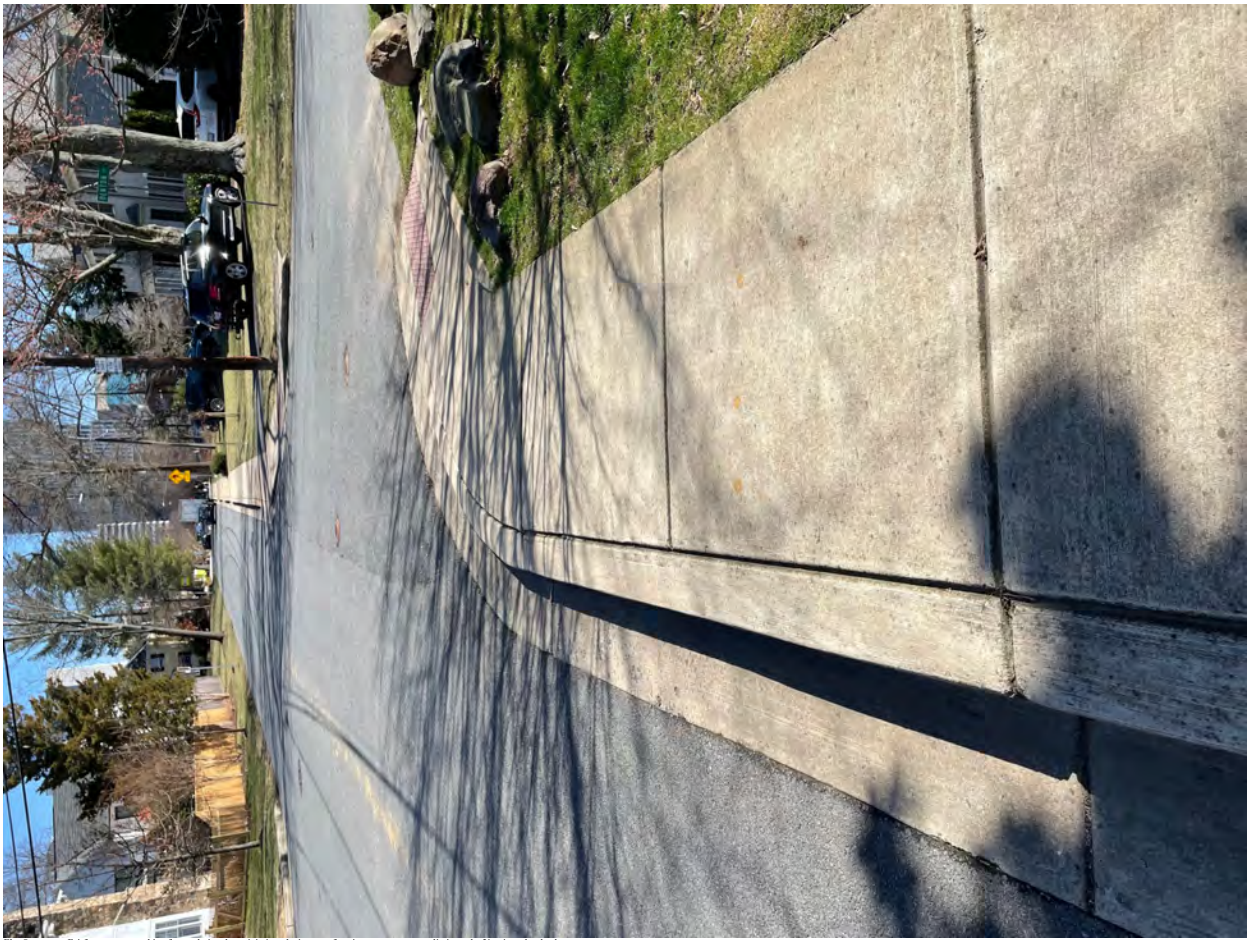
Sincerely, Susan B. Wertheim and Amit R. Dalal



These cherry trees are 7' and 8' back from back face of curb.



Kenhill and Lenox Rd : Younger Kwanzan cherries on Kenhill (proposed to be destroyed) were selected to match this 50+ year old healthy Kwanzan at 6100 Lenox Road.



Elm Street near Fairfax — we are asking for a solution that minimizes the impact of paving on trees roots - eliminate the 3' strip and setback.

Main, Lori J.

From: herbert rosenthal <hrosenthal5@gmail.com>
Sent: Wednesday, February 8, 2023 9:14 PM
To: Main, Lori J.
Subject: March 1 Hearing Kenwood Park Sidewalks

[EXTERNAL EMAIL]

I am submitting these comments for the record.

My address: 6101 Plainview Road

60+ years ago, it would have been nice if the County had required all subdivisions to have sidewalks. But that train has left the station. And I do not think it can return.

While my property is not impacted by the proposed sidewalks, I am opposing the proposal.

Two of the streets have little traffic. Kenhill is one of them.

We have all learned how to walk in the streets in Kenwood park. And push our baby carriages.

My street from Millwood to Whittier on the north side has very few trees==other than old Kwanzas that still hang in there and are beautiful for 10 days a year. The county could put a sidewalk there with minimal desecration to landscaping.

But on the streets in the proposal, there are a lot of trees that give the neighborhood its character and their destruction is not worth our taxpayer money.

One thing the County should consider (but probably will not): require every new house built after a tear down to have a sidewalk. In ten to fifteen years, when most of the 60+ year old houses have been replaced by McMansions (or perhaps duplexes), the county can then install sidewalks on the lots that were rebuilt before the requirement was initiated. Given the developers' control of the County government policy, this idea is unlikely to be adopted by the County Government.

My guess is that most of the home owners on the streets for which sidewalks are proposed will say NO. And I guess that most of the comments submitted by home owners in Kenwood Park will be saying NO to sidewalks.

I will listen in to the March hearing but do not plan to speak. I have signed up.

Thank you.

--

Herbert A. Rosenthal



February 22, 2002

Mr. Christopher Conklin
Mr. Marc Erlich
Mr. Andrew Friedson
Ms. Lori Main
KPCA Listserve

**RE: KENWOOD PARK COMMUNITY SIDEWALK PROPOSAL
SIDEWALK TO NOWHERE**

Dear Distinguished Representatives, Staff, and Neighbors:

We are extremely upset with the lack of transparency, communication, thought, and management of the Sidewalk Project. Over many decades, the neighborhood has made a concerted effort and spent millions of dollars to line the streets with trees and beautiful landscaping. On its face, the installation of a 5-foot-wide sidewalk will ruin the character of neighborhood, waste millions of dollars spent by property owners to beautify their properties, and result in generic streets with few/no trees on one side. Unfortunately, the lack of design and forthrightness of the governing bodies have not provided adequate information for us to provide a more meaningful and complete response to it. That said, the balance of this letter will express some of the shortcomings of this process and lack of intelligent thought related to the installation of sidewalks.

Starting with notice, most property owners in Kenwood Park did not receive any notification of this matter because the sidewalk is not being installed on their property, even though it affects the entire neighborhood. KPCA, Montgomery County, and other applicable organizations should have led this process with neighborhood meetings and community input prior to the county forcing this upon us. This process and project have led to community outrage with constituents spending time and money to better understand how this will impact all of us.

Further, upon learning about the county sidewalk installation, we are shocked and appalled by the process the county has instituted. No comprehensive studies are conducted to determine the need for a sidewalk AND no alternative solutions were considered. Private sector projects require multiple layers of approvals/permits, compromises, oversight, alternatives, and neighborhood input. Additionally, the sidewalk installation is a direct deviation from the KPCA's continued encouragement to plant trees along the street to maintain/improve the character of Kenwood Park

Sidewalks are not the only solution to safety and may be a false sense of security for. The following are only *several* reasonable items to consider before spending over \$1,500,000.00 of taxpayer money with a multimillion-dollar negative impact of property values:

- Environmental impact (trees, landscaping, impervious surface, runoff water/flooding, etc.)
- traffic study

- pedestrian study
- investigation of alternative safety measures, such as the installation of more speed bumps, other speed reduction products, stop signs (only one exists between Bradley and Hopewood along Durbin), lowering the speed limit (no speed limit signs are installed along Durbin Road), speed cameras, reducing the width of the road to install a walking/biking lane), and many other alternatives.
- a realistic budget (while there is a general budget, the county has not conducted any soil testing, the exact impact of trees and their relocation, etc.)

Moreover, the design of the sidewalk is flawed for many reasons including but limited to the lack of attention to details. For example, the sidewalk along Durbin beyond Kenhill Road is not heavily traveled by cars or pedestrians because it dead ends to Hopewood Street, the grade is very steep, and most travel via Kenhill/Lenox to access Whittier Boulevard. Further, there is no sidewalk along Hopewood Street and thus that portion is a sidewalk to nowhere. Similarly, the proposed sidewalk along certain portions of Millwood Road do not make logical sense because the north and south portions do not connect to existing or proposed sidewalks. I am sure many of the other Kenwood Park residents will provide a multitude of other flaws with the plan.

We hope the amount of community opposition to this project will evoke change in the process and the Kenwood Park Sidewalk Project will be suspended until more studies are conducted and alternatives are reviewed. We also expect our elected officials to be responsible stewards of our tax dollars and conduct reasonable due diligence when presenting such matters.

Thank you and be well.

Sincerely,



Geoffrey L. Mackler, Esq.



Lindsay S. Mackler

6116 Durbin Road
(410) 627-3636
gmackler@hrretail.com

6116 Durbin Road
(917) 656-4560
lindsaysloane@gmail.com

February 12, 2023

**WRITTEN TESTIMONY OF KENT MASON AND SUSAN ADAMS IN OPPOSITION
TO THE INSTALLATION OF SIDEWALKS IN KENWOOD PARK BY THE
MONTGOMERY COUNTY DEPARTMENT OF TRANSPORTATION**

By a letter dated January 17, 2023 addressed to “Property Owner(s),” Robert Gonzales informed us that the Montgomery County Department of Transportation “has designated [specified] roadways for sidewalk installation.” The installation included our street; we live at 6712 Kenhill Road in Bethesda. The accompanying materials indicated that the two trees in front of our house would be removed, as well as the tree just over the line between our house and our neighbor’s house at 6716 Kenhill Road. The three trees are mature and beautiful. In total, as we understand it, at least 136 trees in our neighborhood would be destroyed and the number of other bushes and shrubs to be destroyed was not addressed.

On February 7, 2023, Mr. Gonzales (Manager, Annual Sidewalk Program) was very kind to join a zoom call with Kenwood Park residents. Mr. Gonzales was generous with his time after business hours and was patient and responsive to the questions posed. He was also candid and transparent, which was greatly appreciated.

He explained that because this is a “minor project,” as he called it, no studies were done of pedestrian or automobile traffic on the streets chosen for sidewalk installation. The decision was made purely based on the proximity to pedestrian generators. He also explained that the success of the sidewalk program was measured by miles of sidewalks installed, with the goal of 5-6 miles per year. He noted that our project included almost two miles of sidewalk, almost 40% of the annual goal by which the sidewalk program would be measured.

Before going into the specifics of our street and our neighborhood, I would like to highlight very concerning aspects of this process.

The success of this sidewalk project is not measured by increases in pedestrian safety. There has been no study of that issue before the project and, as we understand it, there will be no study of it afterwards.

The success of this sidewalk project is not measured by increases in automobile safety. There has been no study of that issue before the project and, as we understand it, there will be no study of it afterwards.

The success of this sidewalk project is not measured by the number of trees and shrubs preserved. There was no study done on alternatives to sidewalks that would preserve trees and shrubs.

The success of the sidewalk program, according to Mr. Gonzales, is measured solely by miles of sidewalks installed.

With the success of the sidewalk program measured by miles of sidewalks installed, and with the Kenwood Park project being almost 40% of the planned sidewalks for the year, frankly, it seems inevitable that this project will be rubber stamped for approval. I ask you not to do that.

February 12, 2023

Frankly, the lack of work on this project is embarrassing, as illustrated by the selection of our street for sidewalks. Kenhill Road is a three-block road that runs parallel to a main through-street – Whittier Boulevard. The result is that traffic on our street is minimal. It is possible that someone uses it a through-street, but if so, that is unusual. It basically just serves the people who live in the three blocks.

Almost every day all year round, my wife and I take a 30 to 40-minute walk in the neighborhood. We love the trees and the shrubbery, especially in the spring when the neighborhood is a festival of color. During our walk, we see maybe five cars and maybe four or five people. Any elementary review of our neighborhood would confirm that. Because of how rare it is for us to encounter cars, we hear them or see them long before they are anywhere close to us.

We are asking you, please don't rubber stamp this project. Please come to our street. Please see that there is virtually no pedestrian or automobile traffic. Please don't harm our neighborhood to meet a sidewalk mileage quota.

I grew up in the County, moved away for about 12 years, and came back in 1984. My wife, Susan Adams, and I have lived in the County since 1984, the last 32 years at 6712 Kenhill Road. We love our neighborhood and ask you to examine the facts before making a decision that will harm our street and our neighborhood.

Main, Lori J.

From: Laura Moulton <lauramoulton2000@yahoo.com>
Sent: Tuesday, February 7, 2023 8:50 PM
To: Main, Lori J.
Subject: Kenwood park sidewalks

[EXTERNAL EMAIL]

Good evening. I would like to express that I do not wish sidewalks in my neighborhood of Kenwood park if it means taking out our mature trees including our cherry trees.

Laura moulton
6805 granby street
Bethesda md

Sent from my iPad

Main, Lori J.

From: Jim Shaffer <jsyooohoo@yahoo.com>
Sent: Wednesday, February 15, 2023 9:10 PM
To: Main, Lori J.
Cc: DTE SIDEWALK
Subject: Written Testimony, sidewalk construction, Kenwood Park

[EXTERNAL EMAIL]

Just two quick comments:

Five foot wide walks seem excessive for this residential area that is not densely populated. I am renting out my house in Kenwood Park so I live in another neighborhood with similarly large houses. We have 4-foot wide walks here, and they are perfectly adequate for the amount of sidewalk traffic.

I always wondered why there were no sidewalks in Kenwood Park. But it is a bit late to put them in now, after 40 to 60 years of getting along OK without. Aren't there more urgent needs for the County to spend money on?

James Shaffer
6809 Millwood Rd (not my mailing address)

From: [Maria Ana de Rijk](#)
To: [Main, Lori J.](#)
Subject: Written Testimony for Kenwood Sidewalk Program
Date: Tuesday, February 28, 2023 9:37:39 AM

[EXTERNAL EMAIL]

Dear Lori,

My family and I live on 6912 Millwood Rd, Bethesda, MD.

We would like to state for the record that we are in opposition to the removal of all the trees in the area. As the proposal stand now we would be losing 3 trees including a beautiful magnolia tree.

While I do think it is a good idea to install some sort of speed limiting measure installing a large sidewalk requiring the removal of hundreds of trees is extreme given the low foot traffic.

I do think that perhaps other measures would be good such as painting one side of the road and designating only for pedestrians and cyclists, making streets one way, Installing more speed bumps or putting curbs in the road so only one car can pass at a time making the other wait for the other one to pass. This would also be nice as more plants could be planted in those areas.

Also in the summer a sidewalk would be unbearably hot as there would be no more shade.

I understand this proposal came about after the terrible accident on Millwood road where a little girl lost her life. As the proposal stands the busstop is still on the other side where there is no proposal for a sidewalk.

Thank you

Kind regards,

Maria de Rijk-Garcia & Rodrigo Garcia Verdu
6912 Millwood Rd

Lillian Klein Abensohn
7108 Millwood Road, Bethesda, MD 20817

Montgomery County, Department of Transportation
100 Edison Park Drive
4th Floor,
Gaithersburg, Maryland 20878

February 4, 2023

Attn:

Lori Jean Main, Planning Specialist ✓
Christopher Conklin, Director

Re: Kenwood Park Sidewalk Planning

News of this planning fell on our community like a bomb! We have enjoyed our wide streets and limited neighborhood traffic, which allow ample room and safety for bikers as well as walkers who can enjoy the canopy of established cherry trees and wide lawns.

Installing sidewalks, especially since they are not remotely needed, will not only reduce the value of property but will also change the entire character of our beloved Kenwood Park. Adding more cement will not make the neighborhood more gracious. Replacement trees will take decades to achieve what will be torn down. All for what? Perhaps some residents on streets that won't be affected would like to see sidewalks (on someone else's property), but are they remotely necessary in this secluded area? Wouldn't sidewalks on Bradley Boulevard make more sense?

Have field studies of traffic and pedestrian usage been completed? What criteria determined the choice of installation sites? How will (re-landscaping, etc.) costs to affected home-owners be distributed among all residents of Kenwood Park?

Please register this household as firmly voting NO to this proposal.

Yours truly,



Lillian Klein Abensohn

From: The Giordano's 7304 Millwood Road, Bethesda MD

02/10/23

jgiordano@mayconstructiongroup.com

To: Lori Main

Lori.Main@montgomerycountymd.gov

Sidewalk Program Written Testimony (Kenwood Park)

Hello, my wife and family live along the proposed sidewalk installation route. Initially, I was in favor of the additions of sidewalks to our street. Pedestrian safety, our family and kids included, is a very important priority. As I dug deeper into the proposed plan, my favorability of the extent of the plan faded as the charm and beauty of our neighborhood would be lost. It also became evident that my run of sidewalk does not make sense.

The notice provided, states that the sidewalk is to "provide safer access.....to schools..." I live at 7304 Millwood Road and as my children will likely be attending Walt Whitman at some point, a safe path to the school would be great. That said, the quickest path from my home to the school, is towards Plainview Road and then down Plainview Road, across Whittier and onto the Whitman campus. The problem is Plainview Road is not included in the current plan, so the sidewalk benefit would only exist for two lots. The aesthetic impact vs the safety reward does not make sense. If there is no intention to add Plainview Road from Millwood to Whittier to the plan, then it makes no sense to add sidewalks to the stretch of Millwood from Durbin to Plainview. My suggestion is to add speed bumps along this stretch of Millwood and do away with the walks.

As I understand my recommendation will likely not make an impact on the ultimate decision, I will continue with concerns I have if the walk is in fact installed on my stretch of Millwood Road.

The Impact document included with the plan makes specific references to my property.

One of which is the removal of the driveway apron. Our current driveway and apron are exposed aggregate - our hopes are the county intends to replace with like and maintain the exposed aggregate look. Please confirm.

The impact also references relocation of utility pole guide wires - where specifically will these be relocated to? It is assumed they will remain in the ROW.

There is mention of removal of the existing slate leadwalk at the location of new concrete sidewalk – will care be taken to maintain our slate walk where it ties back into the new proposed concrete sidewalk? Specifically, will the county perform all associated work to ensure our walk meets the new walk at the same grade and will repairs to our walk be performed by the county as needed to match what is currently in place?

Thanks in advance for your attention and consideration of this testimony.

Respectfully,

Joseph & Allison Giordano

From: [carol logun](#)
To: [Main, Lori J.](#)
Subject: Kenwood Park Community Sidewalk Proposal
Date: Wednesday, January 25, 2023 2:39:52 PM

[EXTERNAL EMAIL]

Good afternoon,

I live in Kenwood Park and I walk everyday the neighborhood at least 2-3 miles through these streets. I am also a Master Gardener, certified by Montgomery Count.

Yes, I am in agreement that sidewalks would be a nice addition to our neighborhood but not necessary. I am **horrified** that large, mature, and healthy trees will be destroyed or put as risk in order to put in sidewalks. Montgomery County has an active program to replace trees at no cost to homeowners however the size of the trees planted in no way makes up for the loss of mature trees.

As a past co-president our Garden Club, 17 years ago we made arrangements with a local nursery (name escapes me now) to plant trees on the county's right away to replace dead or diseased trees at the homeowners expense. These trees have finally reached a good height to give shade and shelter of wildlife, and now they will be destroyed.

It also should be noted that Kenwood Park is undergoing a transformation. The original houses are being torn down and replaced with new home. In doing so, we have lost many mature trees already and I am sure there will be more to come down.

Not only does this project effect our trees but it places yet another burden on the birds, pollinator and other wildlife. Paving over green space and the increase of runoff going into the Chesapeake Bay also needs to be considered.

I would suggest that if this project go through then the following be considered:

1. Sidewalk should go around large, mature healthy trees.
2. Trees must be protected no matter the cost.
3. If diseased or small trees need to be removed then the replacement trees should be large, older trees. Not small saplings which will take a generation or two to begin to replace what will be lost with this project.
3. I believe that there is enough street space for both pedestrian and cars in our neighborhood.

I believe we, as citizens of the world, need to protect our environment, not continue to pave over it.

Carolea Logun
7309 Marbury Rd
Bethesda MD 20817