

# Willerburn Acres Community Sidewalk Proposal

## Public Hearing Record

Wednesday, January 25, 2023, at 7:00 p.m.

### CONTENTS

Exhibit 1	Office of Management & Budget Sidewalk Program Minor Projects P506747
Exhibit 2	Project Vicinity Maps 1 & 2
Exhibit 3	Public Right-of-Way Construction Impacts
Exhibit 4	Tree Report
Exhibit 5	MCDOT News Release circulated Jan. 25, 2023, Washington Times Legal AD published Jan. 23 and 24, 2023, Posted to NextDoor neighborhood social media site on Jan. 23, 2023.
Exhibit 6	Written Testimony Supporting the Proposal
Exhibit 7	Written Testimony Opposing the Proposal
Exhibit 8	List of Attendees at Public Hearing
Exhibit 9	Public Hearing Transcript



# Sidewalk Program Minor Projects

(P506747)

Category	Transportation	Date Last Modified	01/10/22
SubCategory	Pedestrian Facilities/Bikeways	Administering Agency	Transportation
Planning Area	Countywide	Status	Ongoing

## EXPENDITURE SCHEDULE (\$000s)

Cost Elements	Total	Thru FY21	Est FY22	Total 6 Years	FY 23	FY 24	FY 25	FY 26	FY 27	FY 28	Beyond 6 Years
Planning, Design and Supervision	12,362	6,939	605	4,818	1,017	520	761	840	840	840	-
Land	2,437	2,268	11	158	10	6	25	25	46	46	-
Site Improvements and Utilities	340	240	10	90	20	14	14	14	14	14	-
Construction	28,453	9,041	2,520	16,892	3,297	2,374	2,200	3,621	2,700	2,700	-
TOTAL EXPENDITURES	43,592	18,488	3,146	21,958	4,344	2,914	3,000	4,500	3,600	3,600	-

## FUNDING SCHEDULE (\$000s)

Funding Source	Total	Thru FY21	Est FY22	Total 6 Years	FY 23	FY 24	FY 25	FY 26	FY 27	FY 28	Beyond 6 Years
G.O. Bonds	43,516	18,412	3,146	21,958	4,344	2,914	3,000	4,500	3,600	3,600	-
State Aid	76	76	-	-	-	-	-	-	-	-	-
TOTAL FUNDING SOURCES	43,592	18,488	3,146	21,958	4,344	2,914	3,000	4,500	3,600	3,600	-

## APPROPRIATION AND EXPENDITURE DATA (\$000s)

Appropriation FY 23 Request	4,344	Year First Appropriation	FY67
Appropriation FY 24 Request	2,914	Last FY's Cost Estimate	36,392
Cumulative Appropriation	21,634		
Expenditure / Encumbrances	18,623		
Unencumbered Balance	3,011		

## PROJECT DESCRIPTION

This pedestrian access improvement program provides sidewalks on County-owned roads and some State-maintained roadways. Some funds from this project will go to support the Renew Montgomery program. The Department of Transportation maintains an official list of all outstanding sidewalk requests. Future projects are evaluated and selected from this list, which is continually updated with new requests. In addition, projects identified by the Citizens' Advisory Boards are placed on the list. One aspect of this project will focus on improving pedestrian walkability by creating a safer walking environment, utilizing selected engineering technologies, and ensuring Americans with Disabilities Act of 1990 (ADA) compliance.

## COST CHANGE

Cost change due to the addition of FY 27 and FY 28 to this ongoing Level of Effort project.

---

## PROJECT JUSTIFICATION

In addition to connecting existing sidewalks, these projects increase pedestrian safety and facilitate walking to: Metrorail stations, bus stops, shopping and medical centers, employment, recreational, and school sites. This program also complements and augments the bikeways that are included in road projects.

## OTHER

Projects originate from private citizens, citizen associations, and public agencies. Projects are evaluated and scheduled using sidewalk prioritization procedures. The project will help the County achieve its Vision Zero goals to reduce deaths and serious injuries on County Roadways to zero by 2030.

In accordance with the FY22-23 Vision Zero Work Plan, DOT is reviewing the program intake process to ensure sidewalk requests are prioritized based on equity, safety, need, and data.

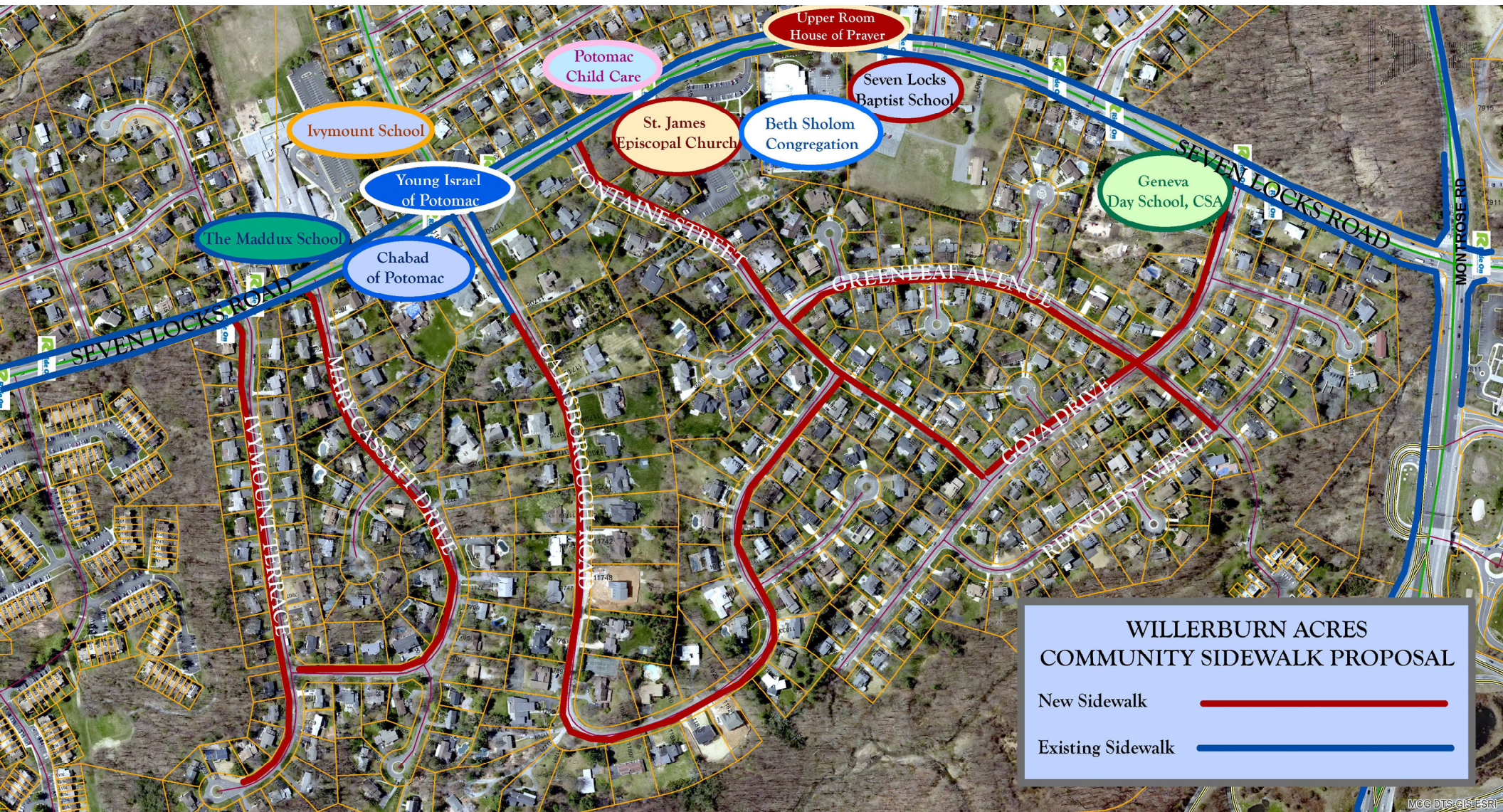
## DISCLOSURES

A pedestrian impact analysis has been completed for this project. Expenditures will continue indefinitely. The County Executive asserts that this project conforms to the requirement of relevant local plans, as required by the Maryland Economic Growth, Resource Protection and Planning Act.

## COORDINATION

Renew Montgomery Program, Maryland-National Capital Park and Planning Commission, Maryland DOT State Highway Administration, Montgomery County Public Schools, Washington Metropolitan Area Transit Authority, Sidewalk and Infrastructure Revitalization , Maryland Mass Transit Administration, Montgomery County Pedestrian Safety Advisory Committee, Commission on People with Disabilities







# WILLERBURN ACRES COMMUNITY SIDEWALK PROPOSAL

New Sidewalk

Existing Sidewalk





**Fontaine Street**  
**Right of Way Construction Impacts**

Side: North (odd-numbered properties)  
Limits: Goya Dr. to Seven Locks Road  
Sidewalk Width: 5-foot-wide  
Sidewalk Material: Concrete  
Roadway Width:

ADDRESS	CONSTRUCTION IMPACTS
Fontaine Street at Goya Drive	Construct A.D.A. compliant ramp.
11900 Goya Drive (Fontaine Street side of property)	Construct a 5-foot-wide concrete sidewalk with a variable 0 to 3-foot-wide greenspace. Adjust storm drain top. Remove one multi-stem (15) CrapeMyrtle tree; replacement tree(s) may be planted.
7605 Fontaine Street	Construct a 5-foot-wide concrete sidewalk with a variable 0 to 3-foot-wide greenspace. Mailbox may need to be relocated. Remove and replace concrete driveway apron. Remove one multi-stem (6) Apple tree; replacement tree(s) may be planted.
7609 Fontaine Street	Construct a 5-foot-wide concrete sidewalk with a variable 0 to 3-foot-wide greenspace. Mailbox may need to be relocated. Remove and replace concrete driveway apron. Remove shrubs within County's public right of way as needed for sidewalk installation. Transition sidewalk in front of utility pole No. 10315. Remove two trees; one 18-inch in diameter Sugar Maple and one 5-inch in diameter Dogwood tree; replacement tree(s) may be planted.
7613 Fontaine Street	Construct a 5-foot-wide concrete sidewalk with a variable 0 to 3-foot-wide greenspace. Mailbox may need to be relocated. Remove and replace concrete driveway apron. Transition sidewalk behind fire hydrant. Remove one 12.5-inch in diameter Japanese Maple tree; replacement tree(s) may be planted.
7617 Fontaine Street	Construct a 5-foot-wide concrete sidewalk with a variable 0 to 3-foot-wide greenspace. Mailbox may need to be relocated. Remove and replace concrete driveway apron.

**PLEASE NOTE: The above impacts are based on a preliminary investigation and are subject to change at any time as field conditions warrant.**



## Fontaine Street, NORTH

ADDRESS	CONSTRUCTION IMPACTS
7621 Fontaine Street	<p>Construct a 5-foot-wide concrete sidewalk with a variable 0 to 3-foot-wide greenspace.</p> <p>Mailbox may need to be relocated.</p> <p>Remove and replace concrete driveway apron.</p> <p>Transition sidewalk in front of utility pole No. 10316.</p>
7625 Fontaine Street	<p>Construct a 5-foot-wide concrete sidewalk with a variable 0 to 3-foot-wide greenspace.</p> <p>Mailbox may need to be relocated.</p> <p>Remove and replace concrete driveway apron.</p> <p>Transition sidewalk in front of utility pole No. 10317.</p> <p>Remove shrubs within County's public right of way as needed for sidewalk installation.</p> <p>Adjust storm drain top.</p> <p>Remove two trees; one Yoshino Cherry tree and one Leyland Cypress tree, both 13-inches in diameter; replacement tree(s) may be planted.</p>
7629 Fontaine Street	<p>Construct a 5-foot-wide concrete sidewalk with a variable 0 to 3-foot-wide greenspace.</p> <p>Remove and replace concrete driveway apron.</p>
11901 Greenleaf Avenue (Fontaine Street side of property)	<p>Construct a 5-foot-wide concrete sidewalk with a variable 0 to 3-foot-wide greenspace.</p> <p>Remove and replace concrete driveway apron.</p> <p>Transition sidewalk in front of utility pole No. 10539.</p> <p>Remove wood curb along front of property within County's public right of way as needed for sidewalk installation.</p> <p>Remove five trees; three Leyland Cypress trees 11, 13 and 14-inches in diameter, respectively, one 38-inch in diameter Silver Maple tree, and one 4-inch in diameter Dogwood tree that is in poor condition; replacement tree(s) may be planted.</p>
Fontaine Street at Greenleaf Avenue	<p>Construct two A.D.A. compliant ramps.</p>
7701 Fontaine Street	<p>Construct a 5-foot-wide concrete sidewalk with a variable 0 to 3-foot-wide greenspace.</p> <p>Adjust storm drain top.</p> <p>Transition sidewalk around brick mailbox structure.</p> <p>Remove slate leadwalk within County's public right of way and replace with concrete.</p> <p>Transition sidewalk in front of utility pole No. 754443-1333.</p>
7711 Fontaine Street	<p>Construct a 5-foot-wide concrete sidewalk with a variable 0 to 3-foot-wide greenspace.</p> <p>Mailbox may need to be relocated.</p> <p>Remove and replace concrete driveway apron.</p> <p>Adjust storm drain top.</p> <p>Remove four trees, one multi-stem (15) CrapeMyrtle, one 8.5-inch diameter Blue Spruce, and two Linden trees, 32 and 29-inches in diameter, respectively; replacement tree(s) may be planted.</p>

**PLEASE NOTE: The above impacts are based on a preliminary investigation and are subject to change at any time as field conditions warrant.**

ADDRESS	CONSTRUCTION IMPACTS
7713 Fontaine Street	<p>Construct a 5-foot-wide concrete sidewalk with a variable 0 to 3-foot-wide greenspace.</p> <p>Mailbox may need to be relocated.</p> <p>Remove and replace concrete driveway apron.</p> <p>Remove one 37-inch in diameter Black Cherry tree because it is in poor, declining condition; replacement tree(s) may be planted.</p>
St. James Episcopal Church parking lot entrance	<p>Construct a 5-foot-wide concrete sidewalk with a variable 0 to 3-foot-wide greenspace.</p> <p>Adjust two storm water catch basins.</p> <p>Relocate two reflector posts.</p> <p>Remove asphalt driveway apron within County's public right of way and replace with concrete.</p> <p>Transition sidewalk in front of fire hydrant.</p>
7721 Fontaine Street	<p>Construct a 5-foot-wide concrete sidewalk with a variable 0 to 3-foot-wide greenspace.</p> <p>Mailbox may need to be relocated.</p> <p>Remove asphalt driveway apron within County's public right of way and replace with concrete.</p>
7723 Fontaine Street	<p>Construct a 5-foot-wide concrete sidewalk with a variable 0 to 3-foot-wide greenspace.</p> <p>Mailbox may need to be relocated.</p> <p>Remove asphalt driveway apron within County's public right of way and replace with concrete.</p> <p>Relocate two reflector posts.</p>
11801 Seven Locks Road (Fontaine Street side of property)	<p>Construct a 5-foot-wide concrete sidewalk with a variable 0 to 3-foot-wide greenspace.</p> <p>Mailbox may need to be relocated.</p> <p>Remove asphalt driveway apron within County's public right of way and replace with concrete.</p> <p>Relocate 3 reflector posts.</p> <p>Relocate street sign.</p> <p>Transition sidewalk in front of utility pole 753442-650730.</p> <p>Remove one 28.5-inch in diameter Boxelder tree due to its poor, declining condition; replacement tree(s) may be planted.</p>
Fontaine Street at Seven Locks Road	<p>Connect sidewalk to existing A.D.A. ramps.</p>

**PLEASE NOTE: The above impacts are based on a preliminary investigation and are subject to change at any time as field conditions warrant.**



## **Greenleaf Avenue**

### **Public Right-of-Way Construction Impacts**

Side: **East** (odd-numbered properties)  
 Limits: **Fontaine Street to Reynolds Avenue**  
 Sidewalk Width: **5-foot**  
 Sidewalk Material: **Concrete**

<b>ADDRESS</b>	<b>CONSTRUCTION IMPACTS</b>
<b>Greenleaf Avenue @ Fontaine Street</b>	<b>Construct an A.D.A. compliant ramp.</b>
<b>11901 Greenleaf Avenue</b>	<b>Construct a 5-foot-wide concrete sidewalk with a 0 to 3-foot-wide variable greenspace.          Storm drain top can be incorporated as part of sidewalk at 1.9%.          Remove and replace concrete leadwalk within County's public right of way.          Relocate mailbox.          Transition sidewalk in front of fire hydrant.          Remove landscaping within County's public right of way in path of sidewalk.          Remove one multi-stem (13) Holly tree; replacement tree(s) may be planted.</b>
<b>11905 Greenleaf Avenue</b>	<b>Construct a 5-foot-wide concrete sidewalk with a 0 to 3-foot-wide variable greenspace.          Remove or adjust 2 drain lines.          Relocate mailbox.          Remove brick leadwalk within County's public right of way and replace with concrete.</b>
<b>12001 Greenleaf Avenue</b>	<b>Construct a 5-foot-wide concrete sidewalk with a 0 to 3-foot-wide variable greenspace.          Remove and replace concrete driveway apron.          Relocate mailbox.</b>
<b>12003 Greenleaf Avenue</b>	<b>Construct a 5-foot-wide concrete sidewalk with a 0 to 3-foot-wide variable greenspace.          Remove and replace concrete driveway apron.          Trim limbs on pine tree to elevate 8-feet above sidewalk.          Relocate mailbox.          Remove three trees, one 19-inch diameter Black Walnut tree, one 16.5-inch in diameter Black Locust tree because it is in poor, declining condition, and one 7.5-inch diameter Dogwood tree; replacement tree(s) may be planted.</b>
<b>7808 Renoir Court on Fontaine Street side of property</b>	<b>Construct a 5-foot-wide concrete sidewalk with a 0 to 3-foot-wide variable greenspace.          Relocate sign.          Remove one 21-inch diameter Norway Spruce tree; replacement tree(s) may be planted.</b>

**PLEASE NOTE: The above impacts are based on a preliminary investigation and are subject to change at any time as field conditions warrant.**

**Greenleaf Avenue, EAST**

<b>ADDRESS</b>	<b>CONSTRUCTION IMPACTS</b>
<b>Greenleaf Avenue @ Renoir Court</b>	<b>Construct 2 A.D.A. compliant ramps.</b>
<b>12101 Greenleaf Avenue</b>	<b>Construct a 5-foot-wide concrete sidewalk with a 0 to 3-foot-wide variable greenspace. Remove flagstone leadwalk within County's public right of way and replace with concrete.</b>
<b>12103 Greenleaf Avenue</b>	<b>Construct a 5-foot-wide concrete sidewalk with a 0 to 3-foot-wide variable greenspace. Remove and replace concrete driveway apron. Relocate mailbox. Transition sidewalk behind fire hydrant. Remove asphalt parking pad and replace with concrete.</b>
<b>12105 Greenleaf Avenue</b>	<b>Construct a 5-foot-wide concrete sidewalk with a 0 to 3-foot-wide variable greenspace. Remove and replace concrete driveway apron. Remove flagstone leadwalk within County's public right of way and replace with concrete. Adjust water meter. Remove landscaping within County's public right of way in path of sidewalk. Relocate mailbox. Remove one 26-inch diameter Kwanzan Cherry tree; replacement tree(s) may be planted.</b>
<b>12107 Greenleaf Avenue</b>	<b>Construct a 5-foot-wide concrete sidewalk with a 0 to 3-foot-wide variable greenspace. Transition sidewalk in front of C&amp;P telephone pole #M12330. Remove and replace concrete driveway apron. Relocate mailbox. Remove stones along driveway within County's public right of way in path of sidewalk.</b>
<b>12109 Greenleaf Avenue</b>	<b>Construct a 5-foot-wide concrete sidewalk with a 0 to 3-foot-wide variable greenspace. Remove and replace concrete driveway apron. Relocate mailbox. Remove flagstone leadwalk within County's public right of way and replace with concrete. Remove landscaping within County's public right of way in path of sidewalk.</b>

**PLEASE NOTE: The above impacts are based on a preliminary investigation and are subject to change at any time as field conditions warrant.**



**Greenleaf Avenue, EAST**

<b>ADDRESS</b>	<b>CONSTRUCTION IMPACTS</b>
<b>12111 Greenleaf Avenue</b>	<b>Construct a 5-foot-wide concrete sidewalk with a 0 to 3-foot-wide variable greenspace. Remove and replace concrete driveway apron. Remove and replace concrete leadwalk. Remove 4x4 timbers at mailbox in path of sidewalk. Remove or adjust cast iron drain line. Remove three trees, two Elm trees, 1 and 1.5-inch diameter, respectively, and one 1-inch diameter Yellowwood tree that is in poor, declining condition; replacement tree(s) may be planted.</b>
<b>11920 Goya Drive on Fontaine Street side of property</b>	<b>Construct a 5-foot-wide concrete sidewalk with a 0 to 3-foot-wide variable greenspace. Storm drain top can be incorporated as part of sidewalk at 2.1%. Remove two Pin Oak trees, 29 and 33-inches in diameter, respectively; replacement tree(s) may be planted.</b>
<b>Greenleaf Avenue @ Goya Drive</b>	<b>Construct two A.D.A. compliant ramps.</b>
<b>11925 Greenleaf Avenue</b>	<b>Construct a 5-foot-wide concrete sidewalk with a 0 to 3-foot-wide variable greenspace. Remove and replace concrete leadwalk within County's public right of way. Remove and replace concrete driveway apron. Relocate mailbox.</b>
<b>12119 Greenleaf Avenue</b>	<b>Construct a 5-foot-wide concrete sidewalk with a 0 to 3-foot-wide variable greenspace. Remove and replace concrete driveway apron. Relocate mailbox. Remove landscaping within County's public right of way as needed to make way for sidewalk. Adjust storm drain top.</b>
<b>Greenleaf Avenue @ Reynolds Avenue</b>	<b>Construct two A.D.A. compliant ramps.</b>

**PLEASE NOTE: The above impacts are based on a preliminary investigation and are subject to change at any time as field conditions warrant.**

**Goya Drive**  
**Right of Way Construction Impacts**

Side: Southwest (even-numbered properties)  
Limits: Seven Locks Road to Fontaine Street  
Sidewalk Width: 5-foot-wide  
Sidewalk Material: Concrete  
Roadway Width: 36-feet

ADDRESS	CONSTRUCTION IMPACTS
Goya Drive at Seven Locks Road	Begin new sidewalk at existing A.D.A. ramp.
11931 Seven Locks Road (Goya Drive side of property)	Construct a 5-foot-wide concrete sidewalk with a variable 0 to 3-foot-wide greenspace. Remove and replace concrete driveway apron. Relocate street sign. Relocate gas pipe warning sign. Remove three Sourwood trees, 3.5, 4 and 3-inches diameter, respectively; replacement tree(s) may be planted.
11940 Goya Drive	Construct a 5-foot-wide concrete sidewalk with a variable 0 to 3-foot-wide greenspace. Mailbox may need to be relocated. Remove and replace concrete driveway apron. Relocate street sign.
11936 Goya Drive	Construct a 5-foot-wide concrete sidewalk with a variable 0 to 3-foot-wide greenspace. Mailbox may need to be relocated. Remove and replace concrete driveway apron. Adjust telecommunications box top. Adjust storm drain top.
11932 Goya Drive	Construct a 5-foot-wide concrete sidewalk with a variable 0 to 3-foot-wide greenspace. Mailbox may need to be relocated. Remove and replace concrete driveway apron. Remove one multi-stem (39) Red Maple tree; replacement tree(s) may be planted.
12116 Greenleaf Avenue (Goya Drive side of property)	Construct a 5-foot-wide concrete sidewalk with a variable 0 to 3-foot-wide greenspace. Remove and replace concrete driveway apron. Trim low hanging tree limbs to elevate 8-feet above sidewalk. Adjust storm drain top.
Goya Drive at Greenleaf Avenue	Construct two A.D.A. compliant ramps.

**PLEASE NOTE: The above impacts are based on a preliminary investigation and are subject to change at any time as field conditions warrant.**



## Goya Drive, SOUTHWEST

ADDRESS	CONSTRUCTION IMPACTS
11920 Goya Drive	Construct a 5-foot-wide concrete sidewalk with a variable 0 to 3-foot-wide greenspace. Mailbox may need to be relocated. Remove and replace concrete driveway apron. Transition behind fire hydrant.
11916 Goya Drive	Construct a 5-foot-wide concrete sidewalk with a variable 0 to 3-foot-wide greenspace. Mailbox may need to be relocated. Remove and replace concrete driveway apron. Remove one 27.5-inch diameter Silver Maple tree; replacement tree(s) may be planted.
11914 Goya Drive	Construct a 5-foot-wide concrete sidewalk with a variable 0 to 3-foot-wide greenspace. Mailbox may need to be relocated. Remove and replace concrete driveway apron. Adjust storm drain top. Remove two trees, one 23-inch diameter Silver Maple and one 1.5-inch diameter Black Gum tree; replacement tree(s) may be planted.
Goya Drive at Van Dyck Court	Construct two A.D.A. compliant ramps.
11904 Goya Drive	Construct a 5-foot-wide concrete sidewalk with a variable 0 to 3-foot-wide greenspace. Mailbox may need to be relocated. Remove and replace concrete driveway apron. Remove one 45-inch diameter Pin Oak tree; replacement tree(s) may be planted.
11900 Goya Drive	Construct a 5-foot-wide concrete sidewalk with a variable 0 to 3-foot-wide greenspace. Mailbox may need to be relocated. Remove and replace concrete driveway apron. Adjust storm drain top. Trim low hanging tree limbs to elevate 8-feet above sidewalk.
Goya Drive at Fontaine Street	Construct A.D.A. ramp.

**PLEASE NOTE: The above impacts are based on a preliminary investigation and are subject to change at any time as field conditions warrant.**

## **Gainsborough Road**

### **Right of Way Construction Impacts**

Side: **SOUTH** (odd-numbered side)  
 Limits: Seven Locks Road to Fontaine Street  
 Sidewalk Width: 5-foot-wide  
 Sidewalk Material: Concrete  
 Roadway Width: 18 to 26-feet

ADDRESS	CONSTRUCTION IMPACTS
11715 Gainsborough Road	<p>Remove portion of existing sidewalk and Transition sidewalk to a 5-foot-wide concrete sidewalk with a variable 0 to 3-foot-wide greenspace.</p> <p>Remove rock mailbox structure and relocate mailbox.</p> <p>Remove and replace concrete driveway apron.</p> <p>Remove rock leadwalk within County's public right of way and replace with concrete.</p> <p>Transition sidewalk in front of fire hydrant.</p> <p>Remove stone parking area within County's public right of way as needed for sidewalk installation.</p> <p>Relocate street sign.</p>
11723 Gainsborough Road	<p>Construct a 5-foot-wide concrete sidewalk with a variable 0 to 3-foot-wide greenspace.</p> <p>Relocate mailbox.</p> <p>Remove two asphalt driveway aprons within County's public right of way and replace with concrete.</p> <p>Remove landscaping within County's public right of way as needed for sidewalk installation.</p> <p>Remove five trees, two Purpleleaf Plum trees, 9 and 12-inches diameter, two Dogwood trees, one 5-inches diameter in poor, declining condition and one with 13 co-dominant stems, and one multi-stem (17) Holly tree; replacement tree(s) may be planted.</p>
11725 Gainsborough Road	<p>Construct a 5-foot-wide concrete sidewalk with a variable 0 to 3-foot-wide greenspace.</p> <p>Remove rock structure mailbox and relocate mailboxes.</p> <p>Remove asphalt driveway apron within County's public right of way and replace with concrete.</p> <p>Remove three Crabapple trees, 12.5 and 14-inches diameter and one multi-stem (14) that is in poor, declining condition; replacement tree(s) may be planted.</p>
11727 & 11729 Gainsborough Road	<p>Construct a 5-foot-wide concrete sidewalk with a variable 0 to 3-foot-wide greenspace.</p> <p>Remove rock structure mailbox and relocate mailboxes.</p> <p>Remove shared asphalt driveway apron within County's public right of way and replace with concrete.</p> <p>Remove one 24-inch diameter White Oak tree; replacement tree(s) may be planted.</p>

**PLEASE NOTE: The above impacts are based on a preliminary investigation and are subject to change at any time as field conditions warrant.**

**Gainsborough Road, SOUTH**

<b>ADDRESS</b>	<b>CONSTRUCTION IMPACTS</b>
<b>11733 Gainsborough Road</b>	<b>Construct a 5-foot-wide concrete sidewalk with a variable 0 to 3-foot-wide greenspace. Relocate mailbox. Remove asphalt driveway apron within County's public right of way and replace with concrete. Remove landscaping and stones within County's public right of way as needed for sidewalk installation. Remove two trees, one 11-inch diameter Redbud tree and one 7-inch in diameter Dogwood tree; replacement tree(s) may be planted.</b>
<b>11739 Gainsborough Road</b>	<b>Construct a 5-foot-wide concrete sidewalk with a variable 0 to 3-foot-wide greenspace. Remove rock mailbox structure and relocate mailbox. Remove asphalt driveway apron within County's public right of way and replace with concrete. Remove one 15-inch diameter Kousa Dogwood tree; replacement tree(s) may be planted.</b>
<b>11743 Gainsborough Road</b>	<b>Construct a 5-foot-wide concrete sidewalk with a variable 0 to 3-foot-wide greenspace. Relocate mailbox. Remove and replace concrete driveway apron. Transition sidewalk in front of fire hydrant. Remove rock walls, shrubs and landscaping within County's public right of way as needed to make way for sidewalk. Remove slate leadwalk within County's public right of way and replace with concrete.</b>
<b>11747 Gainsborough Road</b>	<b>Construct a 5-foot-wide concrete sidewalk with a variable 0 to 3-foot-wide greenspace. Relocate mailbox. Remove two asphalt driveway aprons within County's public right of way and replace with concrete. Relocate street sign.</b>
<b>11753 Gainsborough Road</b>	<b>Construct a 5-foot-wide concrete sidewalk with a variable 0 to 3-foot-wide greenspace. Relocate mailbox. Remove asphalt driveway apron within County's public right of way and replace with concrete. Remove two trees, one multi-stem (21) Mulberry tree and one 23-inch diameter Virginia Pine that is in poor, declining condition; replacement tree(s) may be planted.</b>

**PLEASE NOTE: The above impacts are based on a preliminary investigation and are subject to change at any time as field conditions warrant.**



**Gainsborough Road, SOUTH**

<b>ADDRESS</b>	<b>CONSTRUCTION IMPACTS</b>
<b>11759 Gainsborough Road</b>	<p>Construct a 5-foot-wide concrete sidewalk with a variable 0 to 3-foot-wide greenspace.</p> <p>Relocate mailbox.</p> <p>Remove two asphalt driveway aprons within County's public right of way and replace with concrete.</p> <p>Remove seven trees, two Virginia Pine trees, 20.5 and 12.5-inches diameter, two Sugar Maple trees, 11 and 5-inches in diameter, two Black Cherry trees, 21 and 19.5-inches diameter, and one 20.5-inch in diameter Tulip Poplar tree; replacement tree(s) may be planted.</p>
<b>11765 Gainsborough Road</b>	<p>Construct a 5-foot-wide concrete sidewalk with a variable 0 to 3-foot-wide greenspace.</p> <p>Remove rock mailbox structure and relocate mailbox.</p> <p>Remove two asphalt driveway aprons within County's public right of way and replace with concrete.</p> <p>Transition sidewalk in front of fire hydrant.</p> <p>Remove slate leadwalk within County's public right of way and replace with concrete.</p> <p>Remove rocks and landscaping within County's public right of way as needed to make way for sidewalk.</p>
<b>11769, 11771 &amp; 11781 Gainsborough Road</b>	<p>Construct a 5-foot-wide concrete sidewalk with a variable 0 to 3-foot-wide greenspace.</p> <p>Relocate mailbox.</p> <p>Remove shared asphalt driveway apron within County's public right of way and replace with concrete.</p> <p>Relocate several warning posts.</p>
<b>11801 Gainsborough Road</b>	<p>Construct a 5-foot-wide concrete sidewalk with a variable 0 to 3-foot-wide greenspace.</p> <p>Relocate mailbox.</p> <p>Remove asphalt driveway apron within County's public right of way and replace with concrete.</p> <p>Trim shrubs within County's public right of way as needed to make way for sidewalk.</p>
<b>11807 Gainsborough Road</b>	<p>Construct a 5-foot-wide concrete sidewalk with a variable 0 to 3-foot-wide greenspace.</p> <p>Relocate mailbox.</p> <p>Remove and replace concrete driveway apron.</p>
<b>11815 Gainsborough Road</b>	<p>Construct a 5-foot-wide concrete sidewalk with a variable 0 to 3-foot-wide greenspace.</p> <p>Relocate mailbox.</p> <p>Remove asphalt driveway apron within County's public right of way and replace with concrete.</p> <p>Remove asphalt curbing.</p> <p>Remove shrubs and landscaping within County's public right of way as needed to make way for sidewalk.</p>

**PLEASE NOTE: The above impacts are based on a preliminary investigation and are subject to change at any time as field conditions warrant.**

**Gainsborough Road, SOUTH**

<b>ADDRESS</b>	<b>CONSTRUCTION IMPACTS</b>
<b>11819 Gainsborough Road</b>	<b>Construct a 5-foot-wide concrete sidewalk with a variable 0 to 3-foot-wide greenspace. Relocate mailbox. Remove and replace concrete driveway apron. Transition sidewalk in front of fire hydrant. Remove three trees, one 4-inch diameter Okame Cherry tree and two Pin Oak trees, 3.5 and 4-inches in diameter; replacement tree(s) may be planted.</b>
<b>11821 Gainsborough Road</b>	<b>Construct a 5-foot-wide concrete sidewalk with a variable 0 to 3-foot-wide greenspace. Relocate mailbox. Remove and replace concrete driveway apron. Transition sidewalk in front of street light. (no number) Adjust storm drain top. Remove one 2-inch diameter Red Maple tree; replacement tree(s) may be planted.</b>
<b>11823 Gainsborough Road (Wooded Lot)</b>	<b>Remove two trees, one 2-inch diameter Pin Oak tree and one 5-inch diameter Mulberry tree; replacement tree(s) may be planted.</b>
<b>11825 Gainsborough Road</b>	<b>Construct a 5-foot-wide concrete sidewalk with a variable 0 to 3-foot-wide greenspace. Relocate mailbox. Remove and replace concrete driveway apron. Remove shrubs and landscaping within County's public right of way as needed to make way for sidewalk. Transition sidewalk in front of utility pole 775443-4729C.</b>
<b>11829 Gainsborough Road</b>	<b>Construct a 5-foot-wide concrete sidewalk with a variable 0 to 3-foot-wide greenspace. Relocate mailbox. Remove and replace concrete driveway apron. Remove shrubs within County's public right of way as needed to make way for sidewalk. Transition sidewalk in front of utility pole M3138.</b>
<b>11833 Gainsborough Road</b>	<b>Construct a 5-foot-wide concrete sidewalk with a variable 0 to 3-foot-wide greenspace. Relocate mailbox. Remove and replace concrete driveway apron. Remove one 1.5-inch diameter Dogwood tree; replacement tree(s) may be planted.</b>
<b>11837 Gainsborough Road</b>	<b>Construct a 5-foot-wide concrete sidewalk with a variable 0 to 3-foot-wide greenspace. Remove and replace concrete leadwalk within the County's public right of way. Adjust storm drain top. Remove one 17.5-inch Locust tree; replacement tree(s) may be planted.</b>

**PLEASE NOTE: The above impacts are based on a preliminary investigation and are subject to change at any time as field conditions warrant.**

**Gainsborough Road, SOUTH**

<b>ADDRESS</b>	<b>CONSTRUCTION IMPACTS</b>
<b>Gainsborough Road at Whistler Court</b>	<b>Construct two ADA compliant ramps.</b>
<b>11901 Gainsborough Road</b>	<b>Construct a 5-foot-wide concrete sidewalk with a variable 0 to 3-foot-wide greenspace. Relocate mailbox. Remove and replace concrete driveway apron. Remove tree stump. Remove landscaping within County's public right of way as needed to make way for sidewalk. Remove one 18-inch diameter Sycamore tree; replacement tree(s) may be planted.</b>
<b>11909 Gainsborough Road</b>	<b>Construct a 5-foot-wide concrete sidewalk with a variable 0 to 3-foot-wide greenspace. Relocate mailbox. Remove and replace concrete driveway apron. Remove four trees, two Silver Maple trees, 22 and 29-inches diameter, one 10-inch diameter Norway Spruce, and one 20-inch in diameter Pin Oak tree; replacement tree(s) may be planted.</b>
<b>11913 Gainsborough Road</b>	<b>Construct a 5-foot-wide concrete sidewalk with a variable 0 to 3-foot-wide greenspace. Relocate mailbox. Remove and replace concrete driveway apron. Remove landscaping within County's public right of way as needed to make way for sidewalk. Remove slate leadwalk within County's public right of way and replace with concrete. Transition sidewalk behind fire hydrant.</b>
<b>11917 Gainsborough Road</b>	<b>Construct a 5-foot-wide concrete sidewalk with a variable 0 to 3-foot-wide greenspace. Relocate mailbox. Remove and replace concrete driveway apron. Remove shrubs and landscaping within County's public right of way as needed to make way for sidewalk. Remove one multi-stem (18) CrapeMyrtle tree; replacement tree(s) may be planted.</b>
<b>11921 Gainsborough Road</b>	<b>Construct a 5-foot-wide concrete sidewalk with a variable 0 to 3-foot-wide greenspace. Relocate mailbox. Remove and replace concrete driveway apron. Remove landscaping within County's public right of way as needed to make way for sidewalk. Remove one 46-inch diameter Pin Oak tree; replacement tree(s) may be planted.</b>

**PLEASE NOTE: The above impacts are based on a preliminary investigation and are subject to change at any time as field conditions warrant.**

**Gainsborough Road, SOUTH**

ADDRESS	CONSTRUCTION IMPACTS
11925 Gainsborough Road	<b>Construct a 5-foot-wide concrete sidewalk with a variable 0 to 3-foot-wide greenspace.</b> <b>Relocate mailbox.</b> <b>Remove and replace concrete driveway apron.</b> <b>Remove landscaping within County's public right of way as needed to make way for sidewalk.</b>
11929 Gainsborough Road	<b>Construct a 5-foot-wide concrete sidewalk with a variable 0 to 3-foot-wide greenspace.</b> <b>Relocate mailbox.</b> <b>Remove and replace concrete driveway apron.</b> <b>Adjust storm drain top.</b> <b>Relocate street sign.</b>
Gainsborough Road at Fontaine Street	<b>Construct ADA compliant ramp.</b>

**PLEASE NOTE: The above impacts are based on a preliminary investigation and are subject to change at any time as field conditions warrant.**



**Mary Cassatt Drive**  
**Right of Way Construction Impacts**

Side: South/Southeast (even-numbered side)  
Limits: Seven Lock Road to Ivymount Terrace  
Sidewalk Width: 5-foot-wide  
Sidewalk Material: Concrete  
Roadway Width: 16-feet

ADDRESS	CONSTRUCTION IMPACTS
Mary Cassatt Drive at Seven Locks Road	Reconstruct ADA curb ramp.
7824 Mary Cassatt Drive	Construct a 5-foot-wide concrete sidewalk with a variable 0 to 3-foot-wide greenspace. Relocate reflector post. Remove brick mailbox structure and relocate mailbox. Remove and replace two concrete driveway aprons. Transition in front of utility pole. (no number)
7820 Mary Cassatt Drive	Construct a 5-foot-wide concrete sidewalk with a variable 0 to 3-foot-wide greenspace. Mailbox may need to be relocated. Remove and replace concrete driveway apron. Remove one 25.5-inch diameter Pin Oak tree that is in poor, declining condition; replacement tree(s) may be planted.
7816 Mary Cassatt Drive	Construct a 5-foot-wide concrete sidewalk with a variable 0 to 3-foot-wide greenspace. Remove brick mailbox structure and relocate mailbox. Remove asphalt driveway apron within County's public right of way and replace with concrete. Remove shrubs within County's public right of way as needed to make way for sidewalk. Remove two trees, one 8-inch diameter Japanese Maple tree and one 43.5-inch diameter Pin Oak tree; replacement tree(s) may be planted.
7812 Mary Cassatt Drive	Construct a 5-foot-wide concrete sidewalk with a variable 0 to 3-foot-wide greenspace. Mailbox may need to be relocated. Remove two asphalt driveway aprons within County's public right of way and replace with concrete. Remove shrubs within County's public right of way as needed to make way for sidewalk.
7808 Mary Cassatt Drive	Construct a 5-foot-wide concrete sidewalk with a variable 0 to 3-foot-wide greenspace. Mailbox may need to be relocated. Remove asphalt driveway apron within County's public right of way and replace with concrete. Remove large stones within County's public right of way to make way for sidewalk.

**PLEASE NOTE: The above impacts are based on a preliminary investigation and are subject to change at any time as field conditions warrant.**

**Mary Cassatt Drive, SOUTH/SOUTHEAST**

<b>ADDRESS</b>	<b>CONSTRUCTION IMPACTS</b>
<b>7800 Mary Cassatt Drive</b>	<p>Construct a 5-foot-wide concrete sidewalk with a variable 0 to 3-foot-wide greenspace.</p> <p>Remove and replace concrete leadwalk within the County's public right of way.</p> <p>Transition sidewalk in front of fire hydrant.</p> <p>Remove three trees, one 26.5-inch diameter Silver Maple tree, one 14-inch diameter Black Cherry tree that is in poor, declining condition and one 8-inch diameter Mulberry tree that is in poor, declining condition; replacement tree(s) may be planted.</p>
<b>Mary Cassatt Drive at Gauguin Lane</b>	<p>Construct two ADA compliant ramps.</p>
<b>7726 Mary Cassatt Drive</b>	<p>Construct a 5-foot-wide concrete sidewalk with a variable 0 to 3-foot-wide greenspace.</p> <p>Mailbox may need to be relocated.</p> <p>Remove asphalt driveway apron within County's public right of way and replace with concrete.</p> <p>Relocate reflector post.</p>
<b>7720 Mary Cassatt Drive</b>	<p>Construct a 5-foot-wide concrete sidewalk with a variable 0 to 3-foot-wide greenspace.</p> <p>Mailbox may need to be relocated.</p> <p>Remove asphalt driveway apron within County's public right of way and replace with concrete.</p>
<b>7714 Mary Cassatt Drive</b>	<p>Construct a 5-foot-wide concrete sidewalk with a variable 0 to 3-foot-wide greenspace.</p> <p>Mailbox may need to be relocated.</p> <p>Remove slate driveway apron within County's public right of way and replace with concrete.</p> <p>A portion of the rock bridge over driveway culvert may need to be removed.</p>
<b>7708 Mary Cassatt Drive</b>	<p>Construct a 5-foot-wide concrete sidewalk with a variable 0 to 3-foot-wide greenspace.</p> <p>Mailbox may need to be relocated.</p> <p>Remove asphalt driveway apron within County's public right of way and replace with concrete.</p> <p>Adjust storm water catch basin, if needed.</p> <p>Remove large stones within County's public right of way as needed for sidewalk installation.</p> <p>Transition sidewalk in front of fire hydrant.</p> <p>Transition sidewalk in front of telecommunications box.</p>

**PLEASE NOTE: The above impacts are based on a preliminary investigation and are subject to change at any time as field conditions warrant.**

**Mary Cassatt Drive, SOUTH/SOUTHEAST**

<b>ADDRESS</b>	<b>CONSTRUCTION IMPACTS</b>
<b>7700 Mary Cassatt Drive</b>	<b>Construct a 5-foot-wide concrete sidewalk with a variable 0 to 3-foot-wide greenspace. Mailbox may need to be relocated. Remove two asphalt driveway aprons within County's public right of way and replace with concrete. Remove shrubs within County's public right of way as needed to make way for sidewalk.</b>
<b>7624 Mary Cassatt Drive</b>	<b>Construct a 5-foot-wide concrete sidewalk with a variable 0 to 3-foot-wide greenspace. Mailbox may need to be relocated. Remove two asphalt driveway aprons within County's public right of way and replace with concrete.</b>
<b>7620 Mary Cassatt Drive</b>	<b>Construct a 5-foot-wide concrete sidewalk with a variable 0 to 3-foot-wide greenspace. Mailbox may need to be relocated. Remove asphalt driveway apron within County's public right of way and replace with concrete. Remove large stones within County's public right of way to make way for the sidewalk.</b>
<b>7803 Ivymount Terrace (Mary Cassatt Drive side of property)</b>	<b>Construct a 5-foot-wide concrete sidewalk with a variable 0 to 3-foot-wide greenspace. Transition sidewalk in front of street light pole 07009. Remove two trees, one 15-inch diameter Red Maple tree and one 20.5-inch diameter Silver Maple tree, both are in poor, declining condition; replacement tree(s) may be planted.</b>
<b>Mary Cassatt Drive at Ivymount Terrace</b>	<b>Construct ADA compliant ramp.</b>

**PLEASE NOTE: The above impacts are based on a preliminary investigation and are subject to change at any time as field conditions warrant.**

**Ivymount Terrace**  
**Public Right-of-Way Construction Impacts**

Side: South (even-numbered side)

Limits: Seven Locks to culdesac (not including culdesac)

Sidewalk Width: 5-feet

Sidewalk Material: Concrete

Road Width: 23-feet

ADDRESS	CONSTRUCTION IMPACTS
Ivymount Terrace at Seven Locks Road	Reconstruct A.D.A compliant ramp to insert additional detectable warning mat to cross Ivymount Terrace.
7824 Ivymount Terrace	Remove 10 to 15-feet of existing sidewalk and transition to 5-foot-wide concrete sidewalk with a 0 to 3-foot-wide variable greenspace. Remove asphalt driveway apron within County's public right of way and replace with concrete. Relocate mailbox. Remove stones in County's public right of way as needed for sidewalk installation.
7822 Ivymount Terrace	Construct a 5-foot-wide concrete sidewalk with 0 to 3-foot-wide variable greenspace. Remove asphalt driveway apron within County's public right of way and replace with concrete. Relocate mailbox.
7820 Ivymount Terrace	Construct a 5-foot-wide concrete sidewalk with a 0 to 3-foot-wide variable greenspace. Remove driveway apron within County's public right of way and replace with concrete. Relocate mailbox. Sidewalk will transition in front of light pole #07004.
7818 Ivymount Terrace	Construct a 5-foot-wide concrete sidewalk with a 0 to 3-foot-wide variable greenspace. Remove driveway apron within County's public right of way and replace with concrete. Relocate mailbox.
7816 Ivymount Terrace	Construct a 5-foot-wide concrete sidewalk with a 0 to 3-foot-wide variable greenspace. Remove driveway apron within County's public right of way and replace with concrete. Relocate mailbox.
7814 Ivymount Terrace	Construct a 5-foot-wide concrete sidewalk with a 0 to 3-foot-wide variable greenspace. Remove driveway apron within County's public right of way and replace with concrete. Relocate mailbox.

**PLEASE NOTE: The above impacts are based on a preliminary investigation and are subject to change at any time as field conditions warrant.**



**Ivymount Terrace, SOUTH**

<b>ADDRESS</b>	<b>CONSTRUCTION IMPACTS</b>
<b>7806 Ivymount Terrace</b>	Construct a 5-foot-wide concrete sidewalk with a 0 to 3-foot-wide variable greenspace. Remove driveway apron within County's public right of way and replace with concrete. Relocate mailbox.
<b>7804 Ivymount Terrace</b>	Construct a 5-foot-wide concrete sidewalk with a 0 to 3-foot-wide variable greenspace. Remove driveway apron within County's public right of way and replace with concrete. Relocate mailbox. Sidewalk will transition in front of light pole #07008.
<b>7802 Ivymount Terrace</b>	Construct a 5-foot-wide concrete sidewalk with a 0 to 3-foot-wide variable greenspace. Remove driveway apron within County's public right of way and replace with concrete. Relocate mailbox. Remove landscaping within County's public right of way to make way for sidewalk.
<b>7800 Ivymount Terrace</b>	Construct a 5-foot-wide concrete sidewalk with a 0 to 3-foot-wide variable greenspace. Remove driveway apron within County's public right of way and replace with concrete. Relocate mailbox.
<b>7732 Ivymount Terrace (vacant lot)</b>	Remove one 19-inch diameter Pin Oak tree that is in poor, declining condition; replacement tree(s) may be planted.
<b>7728 Ivymount Terrace</b>	Construct a 5-foot-wide concrete sidewalk with a 0 to 3-foot-wide variable greenspace. Remove driveway apron within County's public right of way and replace with concrete. Relocate mailbox. Remove landscaping within County's public right of way to make way for sidewalk. Relocate sign.
<b>7724 Ivymount Terrace</b>	Construct a 5-foot-wide concrete sidewalk with a 0 to 3-foot-wide variable greenspace. Remove driveway apron within County's public right of way and replace with concrete. Relocate mailbox. Sidewalk will transition in front of fire hydrant. Sidewalk will transition in front of light pole #07010.

**PLEASE NOTE: The above impacts are based on a preliminary investigation and are subject to change at any time as field conditions warrant.**

**Ivymount Terrace, SOUTH**

<b>ADDRESS</b>	<b>CONSTRUCTION IMPACTS</b>
<b>7720 Ivymount Terrace</b>	<b>Construct a 5-foot-wide concrete sidewalk with a 0 to 3-foot-wide variable greenspace. Remove driveway apron within County's public right of way and replace with concrete. Relocate mailbox. Remove landscaping and rocks within County's public right of way to make way for sidewalk.</b>
<b>7716 Ivymount Terrace</b>	<b>Construct a 5-foot-wide concrete sidewalk with a 0 to 3-foot-wide variable greenspace. Remove driveway apron within County's public right of way and replace with concrete. Relocate mailbox. Remove rocks within County's public right of way to make way for sidewalk.</b>
<b>7712 Ivymount Terrace</b>	<b>Construct a 5-foot-wide concrete sidewalk with a 0 to 3-foot-wide variable greenspace. Remove driveway apron within County's public right of way and replace with concrete. Relocate mailbox.</b>

**PLEASE NOTE: The above impacts are based on a preliminary investigation and are subject to change at any time as field conditions warrant.**

**TREE PROTECTION PLAN - new sidewalk**

Area - Fontaine St, Greenleaf Ave, Goya Dr, Gainsborough Rd, Ivymount Terr, Mary Cassatt Dr

Project Manager: Lori Main

Submitted 11.16.22

DBH = diameter (in.) at breast height (4.5 ft above ground), ms = multi stem

Location: F = front, S = side, R = rear, I = island, P = private, O = opposite, M = median

Recommendation: F = Fencing required, s/w = sidewalk, elev = elevation pruning

DW = dead wood removal, d/w = driveway, cli = clear light, csi = clear sign, cpt = clear private tree, clh = clear house

Note: refer to **Tree Protection Requirements For The Department****Of Transportation** for Standard Tree Protection Measures

Note: Inspection of worksite tree protection measures required

by Certified Arborist with the county prior to construction activities

Note: ROW not to be utilized for staging area unless otherwise permitted

by Certified Arborist

ADDRESS	SPECIES	DBH	LOCATION	RECOMMENDATIONS
				<b>Note: 5' sidewalk with approx. 3' green space for all addresses listed unless noted otherwise</b>
				<b>Note: All trees listed below require tree protection fencing unless noted otherwise</b>
<b>Fontaine St</b>				
11900 Goya Dr	Crapemyrtle	15ms	1S	<b>REMOVE:</b> Proposed construction would compromise health/structural stability of tree
7605	Apple	6ms	1F	<b>REMOVE:</b> Proposed construction would compromise health/structural stability of tree
7609	Tulip Poplar	12/11.5	1F-P	Root prune up to edge of proposed sidewalk
	Sugar Maple	18	1F	<b>REMOVE:</b> Proposed construction would compromise health/structural stability of tree
	Dogwood	5	2F	<b>REMOVE:</b> Proposed construction would compromise health/structural stability of tree
7613	Japanese Maple	12.5	1F	<b>REMOVE:</b> Proposed construction would compromise health/structural stability of tree
7617	Silver Maple	38.5	1F-P	Root prune up to edge of proposed sidewalk
7625	Yoshino Cherry	13	1F	<b>REMOVE:</b> Proposed construction would compromise health/structural stability of tree
	Leyland Cypress	13	2F	<b>REMOVE:</b> Proposed construction would compromise health/structural stability of tree
11901 Greenleaf Ave	Leyland Cypress	14	1S	<b>REMOVE:</b> Proposed construction would compromise health/structural stability of tree
	Leyland Cypress	13	2S	<b>REMOVE:</b> Proposed construction would compromise health/structural stability of tree
	Leyland Cypress	11	3S	<b>REMOVE:</b> Proposed construction would compromise health/structural stability of tree
	Silver Maple	38	1S-P	<b>REMOVE:</b> Proposed construction would compromise health/structural stability of tree
	Dogwood	4	4S	<b>REMOVE,</b> poor condition
7701	Dogwood	5.5	1F-P	Root prune up to edge of proposed sidewalk
7711	Crapemyrtle	15ms	1F	<b>REMOVE:</b> Proposed construction would compromise health/structural stability of tree
	Blue Spruce	8.5	2F	<b>REMOVE:</b> Proposed construction would compromise health/structural stability of tree
	Linden	32	1F-P	<b>REMOVE:</b> Proposed construction would compromise health/structural stability of tree
	Linden	29	2F-P	<b>REMOVE:</b> Proposed construction would compromise health/structural stability of tree
	Hemlock	9.5	3F-P	Root prune up to edge of proposed sidewalk
7713	Norway Spruce	26	1F-P	Root prune up to edge of proposed sidewalk
	Hemlock	10.5	2F-P	Root prune up to edge of proposed sidewalk, Note: poor condition
	Black Cherry	37	3F-P	<b>REMOVE,</b> poor condition
Church	Leyland Cypress	15	1F-P	Root prune up to edge of proposed sidewalk
7721	River Birch	23ms	1F-P	Root prune up to edge of proposed sidewalk
	River Birch	28ms	2F-P	Root prune up to edge of proposed sidewalk
11801 Seven Locks Rd	Red Maple	27.5	1S-P	Root prune up to edge of proposed sidewalk
	Boxelder	28.5	2S-P	<b>REMOVE,</b> poor condition
	Dogwood	9	3S-P	F

ADDRESS	SPECIES	DBH	LOCATION	RECOMMENDATIONS
<b>Greenleaf Ave</b>				
11901	Crapemyrtle	24ms	1F-P	Root prune up to edge of proposed sidewalk
	Silver Maple	39.5	2F-P	Air Excavation Required
	Holly	13ms	1F	REMOVE: Proposed construction would compromise health/structural stability of tree
11905	Weeping Cherry	9	2F-P	Root prune up to edge of proposed sidewalk
	Japanese Maple	16	1F-P	F
12003	Black Walnut	19	1F	REMOVE: Proposed construction would compromise health/structural stability of tree
	Black Locust	16.5	2F	REMOVE, poor condition
	Dogwood	7.5	3F	REMOVE: Proposed construction would compromise health/structural stability of tree
7808 Renoir Ct.	Norway Spruce	17	1S-P	Root prune up to edge of proposed sidewalk
	Norway Spruce	21	1S	REMOVE: Proposed construction would compromise health/structural stability of tree
12101	Pin Oak	36	2S-P	Air Excavation Required
	Dogwood	16	1F-P	Root prune up to edge of proposed sidewalk
12105	Kwanzan Cherry	26	1F	REMOVE: Proposed construction would compromise health/structural stability of tree
12109	White Oak	23	1F-P	Air Excavation Required
	White Oak	25	2F-P	Air Excavation Required
	White Oak	27.5	3F-P	Air Excavation Required
12111	Elm	1.5	1F	REMOVE: Proposed construction would compromise health/structural stability of tree
	White Oak	27.5	1F-P	Air Excavation Required
	Yellowwood	1	2F	REMOVE, poor condition
	Elm	1.5	3F	REMOVE: Proposed construction would compromise health/structural stability of tree
11920 Goya Dr	Pin Oak	29	1S	REMOVE: Proposed construction would compromise health/structural stability of tree
	Pin Oak	33	2S	REMOVE: Proposed construction would compromise health/structural stability of tree
<b>Goya Dr</b>				
11900	Kwanzan Cherry	16.5	1F	Air Excavation Required
	Magnolia	18.5	2F	Air Excavation Required
11904	Holly	23	1F-P	Root prune up to edge of proposed sidewalk
	Pin Oak	45	2F-P	REMOVE: Proposed construction would compromise health/structural stability of tree
	Japanese Maple	1.5	1F	F
11914	Silver Maple	23	1F	REMOVE: Proposed construction would compromise health/structural stability of tree
	Black Gum	1.5	2F	REMOVE: Proposed construction would compromise health/structural stability of tree
	Silver Maple	14	3F	Root prune up to edge of proposed sidewalk
11916	Red Maple	19.5	1F-P	Air Excavation Required
	Silver Maple	27.5	2F-P	REMOVE: Proposed construction would compromise health/structural stability of tree
	White Pine	24	3F-P	Root prune up to edge of proposed sidewalk
11920	Red Maple	20.5	1F-P	Air Excavation Required
12116 Greenleaf Ave	Pin Oak	48	1F-P	Root prune up to edge of proposed sidewalk
	Japanese Maple	9	1F	Root prune up to edge of proposed sidewalk
11932	Pin Oak	36	1F-P	Air Excavation Required
	Dogwood	11ms	2F-P	Root prune up to edge of proposed sidewalk
	Red Maple	39ms	1F	REMOVE: Proposed construction would compromise health/structural stability of tree

ADDRESS	SPECIES	DBH	LOCATION	RECOMMENDATIONS
11936	Crabapple	23	1F-P	Root prune up to edge of proposed sidewalk
11940	Crapemyrtle/Crabapple	14ms	1F	Root prune up to edge of proposed sidewalk
11931 Seven Locks Rd	Crapemyrtle	20ms	2F	Root prune up to edge of proposed sidewalk
	White Pine	22	1S-P	Root prune up to edge of proposed sidewalk
	White Pine	21.5	2S-P	Root prune up to edge of proposed sidewalk
	Sourwood	3.5	1S	REMOVE: Proposed construction would compromise health/structural stability of tree
	Sourwood	4	2S	REMOVE: Proposed construction would compromise health/structural stability of tree
	Sourwood	3	3S	REMOVE: Proposed construction would compromise health/structural stability of tree
<b>Ivymount Terrace</b>				
7720	Pin Oak	25	1F	Air Excavation Required
7724	Pin Oak	24	1F-P	Root prune up to edge of proposed sidewalk
7728	Pin Oak	32	1F-P	Air Excavation Required
7732 (no house)	Pin Oak	19	1F	REMOVE: Proposed construction would compromise health/structural stability of tree (poor cond.)
7804	Pin Oak	28	1F	Air Excavation Required
	Pin Oak	32	1F-P	Air Excavation Required
7806	Pin Oak	19	1F-P	Root prune up to edge of proposed sidewalk
7810	Holly	18	1F-P	F
7820	Cherry	7	1F	F
	Red Maple	29.5	1F-P	Air Excavation Required
7822	Norway Maple	16	1F	Root prune up to edge of proposed sidewalk
<b>Mary Cassatt Dr</b>				
7803 Ivymount Terr	Sugar Maple	11.5	1S	Root prune up to edge of proposed sidewalk
	Red Maple	15	2S	REMOVE: Proposed construction would compromise health/structural stability of tree (poor cond.)
	Red Maple	7	3S	Root prune up to edge of proposed sidewalk
	Sugar Maple	18.5	4S	Air Excavation Required
	Silver Maple	20.5	1S-P	REMOVE: Proposed construction would compromise health/structural stability of tree (poor cond.)
	Blackgum	6.5	2S-P	Root prune up to edge of proposed sidewalk
	Tulip Poplar	35	3S-P	Air Excavation Required
7620	White Oak	27.5	1F-P	Air Excavation Required
7700	Leyland (hedge)	n/a	1F	Root prune up to edge of proposed sidewalk
7708	Zelkova	35	1F-P	Root prune up to edge of proposed sidewalk
	Blue Atlas Cedar	11	2F-P	F
7714	Pin Oak	35	1F-P	F
7720	River Birch	6ms	1F	F
7726	Willow Oak	41	1F	Air Excavation Required
7800	Silver Maple	26.5	1F	REMOVE: Proposed construction would compromise health/structural stability of tree
	Black Cherry	14	2F	REMOVE: Proposed construction would compromise health/structural stability of tree (poor cond.)



ADDRESS	SPECIES	DBH	LOCATION	RECOMMENDATIONS
	Mulberry	8	3F	REMOVE: Proposed construction would compromise health/structural stability of tree (poor cond.)
7812	Dogwood	27	1F-P	F
7816	Japanese Maple	8	1F	REMOVE: Proposed construction would compromise health/structural stability of tree
	Pin Oak	43.5	2F	REMOVE: Proposed construction would compromise health/structural stability of tree
7820	Magnolia	20	1F-P	F
	Pin Oak	25.5	1F	REMOVE: Proposed construction would compromise health/structural stability of tree (poor cond.)
<b>Gainsborough Rd</b>				
11715	Arborvitae	15	1F	Root prune up to edge of proposed sidewalk
	Kwanzan Cherry	4	1F-P	F
	Sugar Maple	32.5	2F-P	Root prune up to edge of proposed sidewalk
	Red Maple	24	3F-P	Root prune up to edge of proposed sidewalk
11723	Purpleleaf Plum	9	1F	REMOVE: Proposed construction would compromise health/structural stability of tree
	Dogwood	5	2F	REMOVE: Proposed construction would compromise health/structural stability of tree (poor condition)
	Holly	17ms	3F	REMOVE: Proposed construction would compromise health/structural stability of tree
	Dogwood	13 codom	4F	REMOVE: Proposed construction would compromise health/structural stability of tree
	Purpleleaf Plum	6.5	5F	Root prune up to edge of proposed sidewalk
	Purpleleaf Plum	12	6F	REMOVE: Proposed construction would compromise health/structural stability of tree
11725	Cedar	9.5	1F-P	Root prune up to edge of proposed sidewalk
	Crabapple	12.5	1F	REMOVE: Proposed construction would compromise health/structural stability of tree
	Crabapple	14ms	2F	REMOVE: Proposed construction would compromise health/structural stability of tree (poor condition)
	Crabapple	14	3F	REMOVE: Proposed construction would compromise health/structural stability of tree
	White Pine	25.5	2F-P	Air Excavation Required
11727	White Oak	24	1F	REMOVE: Proposed construction would compromise health/structural stability of tree
11733	Redbud	11	1F	REMOVE: Proposed construction would compromise health/structural stability of tree
	Redbud	12	1F-P	Root prune up to edge of proposed sidewalk
	Dogwood	7	2F	REMOVE: Proposed construction would compromise health/structural stability of tree
11739	Kousa Dogwood	15	1F	REMOVE: Proposed construction would compromise health/structural stability of tree
	Magnolia	10	1F-P	F
11743	Japanese Maple	8	1F	Root prune up to edge of proposed sidewalk
11747	Crabapple	11.5	1F-P	Root prune up to edge of proposed sidewalk
11753	Mulberry	21ms	1F-P	REMOVE: Proposed construction would compromise health/structural stability of tree
	Virginia Pine	23	2F-P	REMOVE: Proposed construction would compromise health/structural stability of tree (poor cond.)
	Cherry	13	3F-P	F
	Redbud	8	1F	Root prune up to edge of proposed sidewalk
	Redbud	9.5	4F-P	Root prune up to edge of proposed sidewalk
	Redbud	8	5F-P	Root prune up to edge of proposed sidewalk
	Dogwood	16ms	6F-P	Root prune up to edge of proposed sidewalk

ADDRESS	SPECIES	DBH	LOCATION	RECOMMENDATIONS
11759	Holly	6.5	1F-P	Root prune up to edge of proposed sidewalk
	Virginia Pine	20.5	1F	REMOVE: Proposed construction would compromise health/structural stability of tree
	Virginia Pine	12.5	2F	REMOVE: Proposed construction would compromise health/structural stability of tree
	Sugar Maple	11	3F	REMOVE: Proposed construction would compromise health/structural stability of tree
	Black Cherry	21	4F	REMOVE: Proposed construction would compromise health/structural stability of tree
	Sugar Maple	5	5F	REMOVE: Proposed construction would compromise health/structural stability of tree
	Black Cherry	19.5	6F	REMOVE: Proposed construction would compromise health/structural stability of tree
	Tulip Poplar	20.5	7F	REMOVE: Proposed construction would compromise health/structural stability of tree
	Black Cherry	8	8F	Root prune up to edge of proposed sidewalk
	Black Cherry	10	2F-P	Root prune up to edge of proposed sidewalk
11765	Crapemyrtle	8	1F-P	Root prune up to edge of proposed sidewalk
11819	Okame Cherry	4	1F	REMOVE: Proposed construction would compromise health/structural stability of tree
	Pin Oak	3.5	2F	REMOVE: Proposed construction would compromise health/structural stability of tree
	Pin Oak	4	3F	REMOVE: Proposed construction would compromise health/structural stability of tree
11821	Red Maple	2	1F	REMOVE: Proposed construction would compromise health/structural stability of tree
	Sycamore	25	1F-P	Air Excavation Required
11823 (wooded)	Pin Oak	2	1F	REMOVE: Proposed construction would compromise health/structural stability of tree
	Norway Spruce	27	1F-P	Air Excavation Required
	Mulberry	5	2F	REMOVE: Proposed construction would compromise health/structural stability of tree
11829	Norway Maple	13	1F-P	Root prune up to edge of proposed sidewalk
	Red Maple	21.5	2F-P	Air Excavation Required
	Holly	12	3F-P	Root prune up to edge of proposed sidewalk
11833	Dogwood	1.5	1F	REMOVE: Proposed construction would compromise health/structural stability of tree
11837	Locust	17.5	1F	REMOVE: Proposed construction would compromise health/structural stability of tree
11901	Dogwood	4.5	1F-P	Root prune up to edge of proposed sidewalk
	Locust	12	2F-P	Root prune up to edge of proposed sidewalk
	stump	25	1F	remove stump
	Sycamore	18	2F	REMOVE: Proposed construction would compromise health/structural stability of tree
11909	Silver Maple	22	1F	REMOVE: Proposed construction would compromise health/structural stability of tree
	Norway Spruce	10	2F	REMOVE: Proposed construction would compromise health/structural stability of tree
	Silver Maple	29	1F-P	REMOVE: Proposed construction would compromise health/structural stability of tree
	Pin Oak	20	3F	REMOVE: Proposed construction would compromise health/structural stability of tree
11913	Norway Maple	25	1F-P	Root prune up to edge of proposed sidewalk
11917	Japanese Maple	29	1F-P	Air Excavation Required
	Red Maple	29	2F-P	Air Excavation Required
	Crapemyrtle	18ms	1F	REMOVE: Proposed construction would compromise health/structural stability of tree
11921	Callery Pear	25	1F-P	Root prune up to edge of proposed sidewalk (note: trunk decay)
	Pin Oak	46	2F-P	REMOVE: Proposed construction would compromise health/structural stability of tree
11925	Callery Pear	9	1F-P	F
11929	Red Maple	26	1F-P	Air Excavation Required

Notes:

ADDRESS	SPECIES	DBH	LOCATION	RECOMMENDATIONS
1. Mechanical root pruning is not allowed. Hand prune roots where "root prune up to edge of proposed sidewalk" is noted above.				
*All root pruning shall be done to a maximum depth of 6"				
2. Any roots 2" diameter or larger exposed by air excavation, that require removal due to construction activities, must be inspected by ISA certified arborist within the Tree Maintenance Section prior to removal.				
3. An approved contractor (Licensed Tree Expert) certified in the State of Maryland for air excavation will be required to conduct all excavation where "Air Excavation Required" is noted above.				
4. Arborist (Tree Maintenance Section, Division of Highway Services) shall be notified by Project Manager of root pruning and Air Excavation schedule prior to scheduled work.				
5. Excavation for proposed sidewalk shall be no more than 6"				
Per Montgomery County Roadside Tree Protection Law, allocation of funds into the <b>Street Tree Replacement Fund</b> is required.				
Three (3) trees required per removal of each county right of way tree that is 6" + DBH, fair or better condition. (135 trees @ \$250.00 per tree)				
<b>\$33,750.00</b> is required for the Street Tree Replacement Fund.				
Note: Tree replacement fee to be paid prior to scheduled construction				



**Main, Lori J.**

---

**From:** Montgomery County, MD <montgomerycountymd@public.govdelivery.com>  
**Sent:** Wednesday, January 25, 2023 10:12 AM  
**To:** Main, Lori J.  
**Subject:** Virtual Public Hearing on Proposed Willerburn Acres Community Sidewalk in Potomac to be Held on Wednesday, Jan. 25

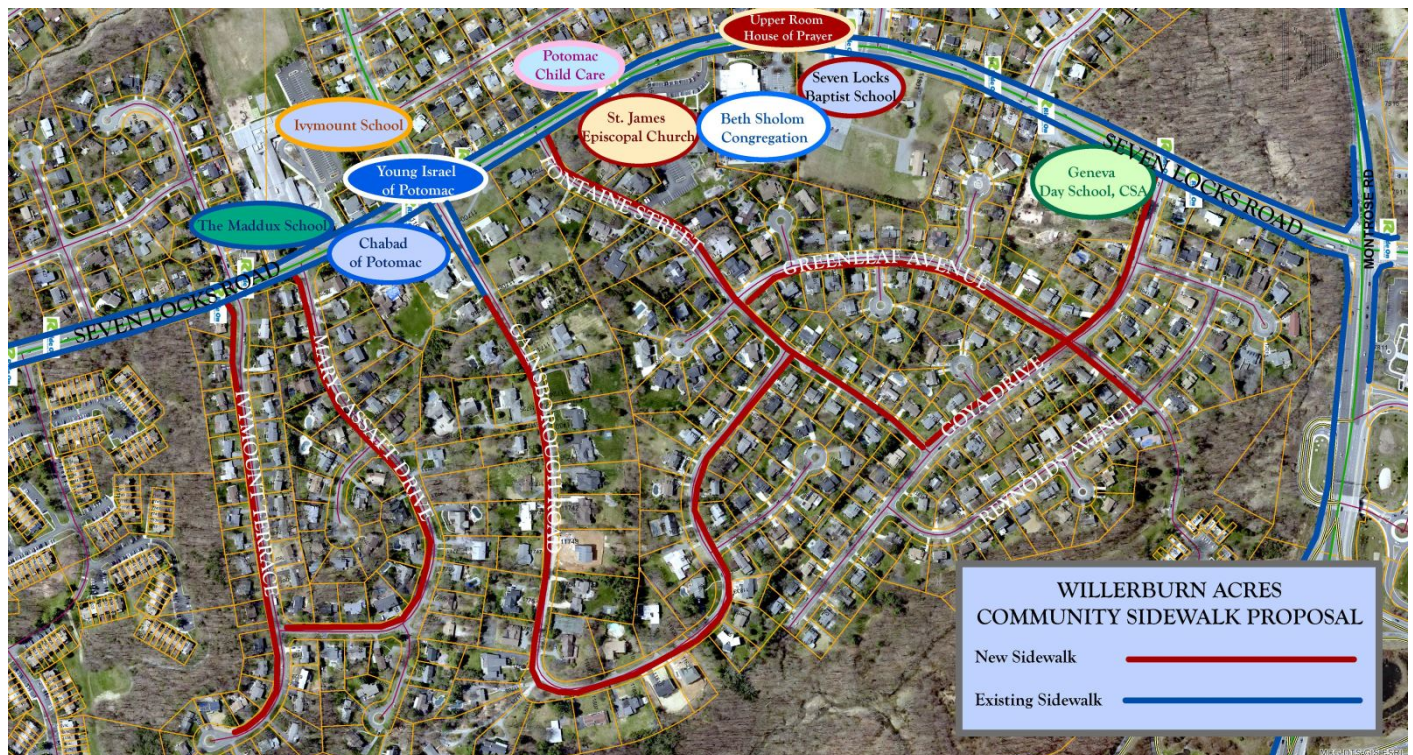
[EXTERNAL EMAIL]

# **MCDOT NEWS RELEASE**

Montgomery County Department of Transportation

---

For Immediate Release: Wednesday, January 25, 2023



**Virtual Public Hearing on Proposed Willerburn Acres Community Sidewalk in Potomac to be Held on Wednesday, Jan. 25**

On Wednesday, Jan. 25, at 7 p.m., the Montgomery County Department of Transportation (MCDOT) will hold a virtual public hearing to discuss the proposed construction of sidewalks on the following roadways:

- the north (odd) side of Fontaine Street from Goya Drive to Seven Locks Road
- the southwest (even) side of Goya Drive from Seven Locks Road to Fontaine Street
- the east (odd) side of Greenleaf Avenue from Fontaine Street to Reynolds Avenue
- the south (odd) side of Gainsborough Road from Seven Locks Road to Fontaine Street
- the south (even) side of Mary Cassatt Drive from Seven Locks Road to Ivymount Terrace
- the south (even) side of Ivymount Terrace from Seven Locks Road to start of culdesac

At the virtual hearing MCDOT will present the project details, costs, schedules and obtain public testimony. If approved, the completed project will enhance safety for pedestrians, bicyclists and people with disabilities as they travel to nearby schools and facilities. Public input is encouraged and will influence whether MCDOT constructs any, all or a portion of the proposed sidewalks.

[Online registration](#) is required to attend. On the morning of the meeting, an invitation will be sent via email to those who registered.

Prior to the virtual meeting, the public is encouraged to review the proposal files on the [project website](#).

Written testimony or questions may be submitted to MCDOT's Sidewalk Program by email to [lori.main@montgomerycountymd.gov](mailto:lori.main@montgomerycountymd.gov). Written testimony carries the same weight as oral testimony. All information provided, including questions and testimony will become a matter of public record.

Interpreter services will be provided upon request with five business days advance notice by contacting Lori Jean Main by email at [lori.main@montgomerycountymd.gov](mailto:lori.main@montgomerycountymd.gov) or call 240-777-7271.

Learn more about MCDOT's engineering and construction projects by visiting [montgomerycountymd.gov/dot-dte](http://montgomerycountymd.gov/dot-dte).

For more information on MCDOT programs, services and updates, visit [montgomerycountymd.gov/mcdot](http://montgomerycountymd.gov/mcdot), follow [@MCDOTNow](#) on Twitter and [subscribe](#) to MCDOT's 'Go Montgomery!' newsletter.

# # #

Release ID: [23-005](#)

Media Contact: [Emily DeTitta](#), 240-372-2282

You are subscribed to MCDOT News Releases for Montgomery County Maryland.



This email was sent to you using GovDelivery, on behalf of [Montgomery County, Maryland Government](#). As a subscriber, you agree that we may contact you by email and use the information you submit as described in the [Montgomery County Privacy Policy](#).

Please do not reply to this email. Replies to this email will not be responded to or read. If you have any questions or

comments, please visit the MC311 Portal at [www.mc311.com](http://www.mc311.com) or call 3-1-1 (240-777-0311 if outside the County) to speak with a Customer Service Representative.

If you would like to unsubscribe from some email newsletters from Montgomery County, click [Manage Preference](#) and make updates. If you would like to unsubscribe from all email newsletters and remove your account information, click [Unsubscribe to all](#) or [Help](#) for any further information.

---

This email was sent to Lori.Main@montgomerycountymd.gov using GovDelivery Communications Cloud on behalf of: Montgomery County Maryland · Monroe Street · 13th Floor Rockville · Rockville, MD 20850





PUBLIC HEARING FOR  
PROPOSED SIDEWALK CONSTRUCTION

**WILLERBURN ACRES COMMUNITY/  
Potomac, Maryland**

- the **north (odd)** side of **Fontaine Street** from **Goya Drive** to **Seven Locks Road**
- the **southwest (even)** side of **Goya Drive** from **Seven Locks Road** to **Fontaine Street**
- the **east (odd)** side of **Greenleaf Avenue** from **Fontaine Street** to **Reynolds Avenue**
- the **south (odd)** side of **Gainsborough Road** from **Seven Locks Rd** to **Fontaine Street**
- the **south (even)** side of **Mary Cassatt Drive** from **Seven Locks Rd** to **Ivymount Terr**
- the **south (even)** side of **Ivymount Terrace** from **Seven Locks Rd** to **start of culdesac**.

Pursuant to Section 49-53 of the Montgomery County Code (2004) as amended, a **virtual** public hearing shall be held on **WEDNESDAY, JANUARY 25, 2023, at 7:00 p.m.** The hearing will be broadcast over the internet via Zoom.

**Please register to attend the hearing:**

<https://montgomerycountymd.gov/dot-dte/sidewalk/WillerburnAcres.html>



To register, paste the above URL into your browser or follow the above QR code using the camera on your cell phone, and click on the “Schedule” tab of the project website where you will find a link to register to attend the hearing. **Registration closes on January 25, 2023, at 5:00pm.** On the morning of the January 25<sup>th</sup> hearing, MCDOT will email the Zoom link and passcode to all registrants.

Audio and video of the hearing will be recorded, a link to which will be posted on the SIDEWALK PROGRAM’s webpage on the MCDOT website: <http://www.montgomerycountymd.gov/dot-dte/sidewalk> .

The sole purpose of a public hearing is to allow residents an opportunity to present oral and/or written comments concerning construction of a sidewalk that provides disabled citizens, pedestrians and bicyclists safer travel to schools and nearby public attractions or facilities. The information presented helps determine whether or not to recommend constructing a portion of, or the entire proposed project. The following hearing will begin at **7:00 p.m.** and run continuously until all information is presented and the hearing has concluded.

**WRITTEN TESTIMONY CARRIES THE SAME WEIGHT AS ORAL TESTIMONY.** Written testimony for consideration may be submitted to: [lori.main@montgomerycountymd.gov](mailto:lori.main@montgomerycountymd.gov) . Please visit the Sidewalk Program website, URL and QR code above, to obtain digital copies of the sidewalk proposal files.

Interpreter services will be provided upon request. Please allow (5) business days advance notice when requesting interpreter services.

Run Dates: January 23 and 24, 2023

AD#

**From:** [Mercy Joseph](#)  
**To:** [Main, Lori J.](#); [Friedson's Office, Councilmember](#); [Albornoz's Office, Councilmember](#); [Glass's Office, Councilmember](#); [Sayles's Office, Councilmember](#); [Jawando's Office, Councilmember](#)  
**Subject:** Willerburn Acres Community Sidewalk Proposal  
**Date:** Friday, January 20, 2023 7:50:02 PM

---

**[EXTERNAL EMAIL]**

Dear MC-DOT and County Council Members -

This is in response to the letter dated Nov 18th 2022, to property owners, from Robert Gonzales, MC-DOT's, Manager Sidewalk Program on the subject of "Willerburn Acres Community Sidewalk Proposal".

Firstly, while we are for the plan to construct such a pedestrian-friendly sidewalk, even if its on the opposite side of the street where we live on, we are quite concerned about the process that might result in the loss of the beautiful old growth trees in our neighborhood.

Other than those trees targeted for removal due to "poor declining health", it appears from the tree report that a majority of the trees will be removed merely "to make way for sidewalk installation". And while your letter reassures us that in compliance with the "Department of Environmental Protection's requirements related to mandatory tree removals, three trees will be planted for every one tree removed", we believe that the current trees have been around for all the years that we have been here and their destruction will completely alter the landscape.

We are also concerned about the type of construction that will be used to construct the sidewalk - if concrete, we are worried that the sidewalks will add to the impermeable surface areas in our neighborhood adding to storm-water management and flooding issues. And this will completely detract from Montgomery County's own efforts of its wonderful Rainscapes program that helps homeowners use "innovative natural approaches to reduce water pollution, stream channel erosion, and drainage problems caused by stormwater runoff".

For all these reasons, we urge you to install sidewalks that use environmentally friendly products and process, to minimize harm to the current trees.

Sincerely,

Mercy Joseph  
Goya Drive  
Potomac

**From:** [Naomi Aiken](#)  
**To:** [Main, Lori J.](#)  
**Subject:** Willerburn Acres Community Sidewalk Proposal  
**Date:** Wednesday, January 25, 2023 1:38:04 PM

---

**[EXTERNAL EMAIL]**

Hi Lori,

My name is Naomi Aiken, and I live in the Willerburn Acres neighborhood in Potomac (12103 Greenleaf Ave). The proposed sidewalk will be directly in front of my house. I have lived in this neighborhood since 2015 - first in a townhome (12254 Greenleaf Ave) and now in a single family home (12103 Greenleaf Ave). I have two children, ages 6 and 8, both of whom attend Beverly Farms Elementary. When they get older, they will attend Hoover Middle and Churchill High, and they will walk from our home to and from the bus stop, if not to and from the schools themselves.

**I'm writing today in support of the Sidewalk proposal** in the Willerburn Acres neighborhood. Tonight is the virtual hearing and I plan to attend it, but also wanted to write directly to you about it.

This is an active neighborhood full of families with young children who walk frequently. As a parent of young children, I am constantly concerned about the safety of my children due to the lack of a sidewalk. A sidewalk would be a wonderful improvement to the safety of the neighborhood.

All parents of young children work hard to teach their kids to look and listen for cars. In this neighborhood I am delighted to see the growing number of electric vehicles, however, fully electric vehicles barely make any noise, meaning it is even harder for children to stay safe. **A sidewalk would remove children from the streets and keep them safe.**

According to the US DOT ([here's the reference](#)) the average sidewalk lasts 80 years. If in 80 years the sidewalk prevents just one child's death, one child's broken leg, one child's injury.. won't that be worth it?

Appreciate you taking the time to read this. Thank you for all you do for our county.

Best,  
Naomi Aiken

443-280-2296  
12103 Greenleaf Ave  
Potomac, MD 20854

**From:** [Rachel Dodkowitz](#)  
**To:** [Main, Lori J.](#)  
**Cc:** [Alan Dodkowitz \(Husband\)](#)  
**Subject:** Hearing 1/25 - Written Statement re: Sidewalks in Willerburn Acres  
**Date:** Wednesday, January 25, 2023 10:07:35 AM

---

[EXTERNAL EMAIL]

My name is Rachel Dodkowitz and I, along with my husband, Alan, reside at 11917 Goya Drive. We have two young children, Ezra (6) and Samuel (1). We submit this statement is SUPPORT of the plan to add sidewalks to our neighborhood.

I believe the county has balanced the interests of the community members, their properties, the environment, and the need for safe passageways for pedestrians and it is time for our neighborhood to have sidewalks installed.

Many of the homes in our neighborhood have either a single garage or no garage, meaning that one or more cars (including one of our own) is usually parked on the street. This means that pedestrians end up walking not on the edge of the street, away from traffic, but in the middle of the street in the path of oncoming car traffic. This is especially problematic on Friday evenings and Saturday mornings on Fontaine Street, when a large portion of our neighborhood walks to services at nearby synagogues. They deserve a safe way to get from their homes to their synagogues, and having sidewalks will hopefully help improve the flow of car traffic when there are significant numbers of people walking.

Sidewalks would also be a huge benefit for our students, who attend both public and private schools, and currently have to wait in the street or on the grass. Many families enjoy riding scooters and going for walks, something that is currently dangerous for young children. Ezra has some gross motor delays and attends weekly physical therapy. He is unable to ride his scooter on the street because he veers toward the gutter slopes. Sidewalks would enable him to ride his scooter.

We look forward to using the new sidewalks in our neighborhood.

Rachel and Alan Dodkowitz



**From:** [Heather Greenblum](#)  
**To:** [Main, Lori J.](#)  
**Cc:** [Gonzales, Robert](#); [Holley, Geary](#); [Berrios, Juan A.](#)  
**Subject:** Strong support for sidewalks in Willerburn Acres - PROPERTY ADDRESS REQUIRED  
**Date:** Tuesday, January 10, 2023 9:47:58 AM

---

**[EXTERNAL EMAIL]**

To whom it may concern:

We would like to support the placement of sidewalks in our neighborhood. My family lives at 11910 Whistler Court, which is off of Gainsborough Road in Potomac. This section of Gainsborough Road between Seven Locks road and Fontaine street is full of blind turns, blind hills, poor lighting, many potholes and a narrowing of the road due to many cars parked in the streets regularly. It has always been a neglected neighborhood in Montgomery county in our opinion. Our own street is in desperate need to be repaved instead of the constant response by the county to instead just fill in the many potholes that tree roots make.

We have lived in our house for 13 years. We now have 3 children all of whom walk to friends houses and to our synagogue at Beth Sholom on Seven Locks road weekly. We also have a dog that needs daily walks and we must go either down or up Gainsborough Road to walk him. There is no way to avoid risking our lives going on Gainsborough to walk our dog. We see neighbors in the evenings who are walking their dogs wearing fluorescent jackets, fluorescent hats, carrying flashlights or have flashing lights on their dog collars in order to be seen by the rush of cars going through our neighborhood. It is a huge safety hazard especially when it is dark.

We live in a neighborhood that attracts Jewish members of our synagogue Beth Sholom Congregation, or Young Israel or Chabad of Potomac, which are all located on Seven Locks Road near Gainsborough, Fontaine and Goya streets, to buy homes because it is in walking distance. Our community walks to our synagogue every Friday night to Saturday night during our sabbath and also on high holidays. Sidewalks would greatly improve the safety for our community. There are many children in our neighborhood and it is only a matter of time that a child runs into the street as there is no safe curb to guide them off of the street.

If you drive through our neighborhood during these times, you will see many adults and

children walking on the side and in the middle of the street during daylight and nighttime hours just assuming that the cars will have time to slow down and drive around them. There are also members of the community that are walking that are over the age of 65 and might not hear a car coming or be able to move fast enough to jump on the grass if a car comes careening around a blind corner.

We are deeply disappointed to hear members of our neighborhood and synagogue are opposing the placement of these sidewalks. To beg that their trees are more important than human lives is outrageous. We understand that they don't want to lose a section of the front of their yards and construction will be very disruptive, but it is for the safety of the greater neighborhood and for many of these people, it is their own children and friend's children it would protect. It is our responsibility to look out for each other, it is our commitment as members of our Jewish community to provide kindness to the greater world.

We ask you to please ignore the rumored petition I have heard about. Please go ahead and place these sidewalks in Willerburn Acres in Potomac. We need them desperately. There is EVERY reason we should qualify for this project from the country. Again, we have blind turns, hills, narrow roads, poor lighting and many families who walk in this neighborhood to get to their places of worship.

We absolutely think it would add value to our home and neighborhood and ultimately be very good for the growth of our places of worship and the value of our homes. This is a life or death issue and we are just risking a tragic accident every day in our neighborhood with so many people walking in the roads. There is no question these sidewalks are needed and we would ALL benefit.

Thank you,

11910 Whistler Court

**From:** [Engler, Jonathan](#)  
**To:** [Main, Lori J.](#); [Gonzales, Robert](#)  
**Subject:** Gainsborough Road/Potomac/ Willerburn Acres Community Sidewalk Project  
**Date:** Tuesday, January 17, 2023 2:18:01 PM

---

**[EXTERNAL EMAIL]**

Ms. Main and Mr. Gonzales:

Thank you for leading this effort to build sidewalks in Willerburn Acres. We strongly support the proposal and thank you for all your efforts on our behalf.

Jonathan Engler  
11901 Gainsborough Road  
Potomac MD 20854  
(202) 412-8494

---

STATEMENT OF CONFIDENTIALITY:

The information contained in this electronic message and any attachments to this message are intended for the exclusive use of the addressee(s) and may contain confidential or privileged information. If you are not the intended recipient, or the person responsible for delivering the email to the intended recipient, be advised you have received this message in error and that any use, dissemination, forwarding, printing, or copying is strictly prohibited. Please notify the Mintz, Levin, Cohn, Ferris, Glovsky and Popeo sender immediately, and destroy all copies of this message and any attachments.

**From:** [Patrick Huckabay](#)  
**To:** [Main, Lori J.](#)  
**Subject:** Willerburn Acres Community Sidewalk Proposal  
**Date:** Saturday, January 21, 2023 8:44:00 PM

---

[EXTERNAL EMAIL]

Good afternoon,

Our family is excited to see sidewalks come to our neighborhood. We feel that this should have been done years ago. The majority of time that my wife and I drive to and from home we encounter a pedestrian walking, jogging, going to or from church or synagogue, people controlling their dog on our street, or letting them roam as cars pass. Our family does the same thing weekly and on the weekends and know that this is not safe, but have no alternative. Some pedestrians walking on our street could care less that a our car is on the road. Some refuse to move to the edge of the street making us weave around them, even when the pedestrian sees other on coming traffic, landscaping trucks, delivery trucks, or other cars parked in the street. Todays electric cars are so quiet that you cannot hear them coming up behind you, creating an even bigger issue for pedestrians, and animals.

We look forward to the sidewalks helping ensure the safety of our Child, neighbors, and us.

We know there is a push to "save the trees" over saving human lives, and some people will argue against the sidewalks using this as their crutch. We have even heard "not on my lawn!", as they too stand in the street as cars weave around them. We hope that these voices will not drown out common sense in a neighborhood with so many pedestrians.

Respectfully,

Patrick Huckabay  
11748 Gainsborough Rd.  
Potomac Maryland 20854

Sent from my iPad



**From:** [Beatriz Yanovich](#)  
**To:** [Main, Lori J.](#)  
**Subject:** Willerburn Acres Sidewalk  
**Date:** Tuesday, December 13, 2022 12:03:21 PM

---

**[EXTERNAL EMAIL]**

I live at 11715 Gainsborough Rd, Rockville, MD 20854.

My office on the second floor faces the street and I enjoy watching neighbors walk by.

I see many walking their dog, or taking their children for walks but always having to step aside for passing cars which can go in either direction. The side of my house to Seven Locks has sidewalk, the side towards the Gainsborough loop does not. It is a treacherous walk away from Seven Locks and a sidewalk would make those walkers safer.

The rest of Gainsborough has sidewalks and it makes for a much better walk but you still have to get to the other side of Seven Locks to enjoy the trip.

I am all for safety and more sidewalks.

Thank you for your attention to this matter,

Beatriz Yanovich

# SIDEWALK PROGRAM

Division of Transportation Engineering  
100 Edison Park Drive, 4<sup>th</sup> Floor · Gaithersburg, MD 20878 · 240-777-7271  
[Lori.Main@montgomerycountymd.gov](mailto:Lori.Main@montgomerycountymd.gov)

## WRITTEN TESTIMONY SURVEY FORM

### Location:

- the north (odd) side of Fontaine Street from Goya Drive to Seven Locks Road
- the southwest (even) side of Goya Drive from Seven Locks Road to Fontaine Street
- the east (odd) side of Greenleaf Avenue from Fontaine Street to Reynolds Avenue
- the south (odd) side of Gainsborough Road from Seven Locks Rd to Fontaine Street
- the south (even) side of Mary Cassatt Drive from Seven Locks Rd to Ivymount Terr
- the south (even) side of Ivymount Terrace from Seven Locks Rd to start of culdesac.

**WRITTEN TESTIMONY** (You are not required to use this form when submitting your written testimony. Instead, you may email you written testimony to [Lori.Main@montgomerycountymd.gov](mailto:Lori.Main@montgomerycountymd.gov). Please remember to provide your name and property address on all emails.)

We STRONGLY support The sidewalk plan.  
We have 4 children and It is very dangerous for  
them to walk in The streets. On multiple occasions My kids  
have been close to being hit while scootering.

Please build The sidewalk ASAP!

Thank you

Moshe and Naomi Chinn

### Property Owner(s) Name and Address:

Moshe and Naomi Chinn  
11700 Gainsborough Rd  
Bethesda MD 20854

### If questions, please provide email address or telephone number:

301-467-1302  
301-758-3157

**NOTE:** The Sidewalk Program welcomes all comments and input, and every attempt will be made to address your concerns. Unfortunately, due to the large volume of correspondence received daily, we reply to questions only. Please note, if you are unable to respond prior to the deadline, your comments will be accepted thereafter.

***Please mail or e-mail our office by:***  
**Wednesday, February 22, 2023**  
***Thank you!***

**From:** [Caren S](#)  
**To:** [Main, Lori J.](#)  
**Subject:** Willerburn Acres Community Sidewalk Proposal  
**Date:** Sunday, November 27, 2022 9:22:43 PM

---

**[EXTERNAL EMAIL]**

I live on Mary Cassatt Drive and I support the installation of sidewalks throughout Wilburn acres. I have several friends who would have loved to buy in this neighborhood, but they did not because of the absence of sidewalks. I, too, only bought in neighborhoods with with sidewalks when I had young children.

We have many pedestrians in the neighborhood who walk to synagogue, who walk for exercise, and who bicycle (including my husband and children), who would benefit from the improved safety measures. I do worry when my 11 year old is out riding his bike – I would feel much safer if we had sidewalks.

We moved from the City of Rockville, where sidewalks are required in every neighborhood. I always wondered why Potomac was “behind” in this aspect.

As much as I love our street as it is, and the trees as they are, and as much as I don’t blame people for desiring to maintain status quo, I do feel that human safety needs to be prioritized. And if we want to make Potomac a welcoming place for all ages, including people with disabilities, young children, the elderly, and even any able-bodied walker or bicycler, sidewalks should be considered a basic necessity.

Dr. Caren Sadikman

—

Caren Sadikman, MD  
Congressional Aesthetics

Sent from my iPhone

**From:** [Joshua Koppel](#)  
**To:** [Main, Lori J.](#)  
**Subject:** Willerburn Acres Community Sidewalk Proposal - written testimony  
**Date:** Saturday, January 21, 2023 8:12:38 PM

---

**[EXTERNAL EMAIL]**

To whom it may concern:

I am writing to express my support for the proposed sidewalk construction in Willerburn Acres. My family walks through the neighborhood for exercise and for leisure multiple times a week. With two little kids, 5 years old and 2 years old, this can feel dangerous at times. We look forward to the added safety and comfort of walking on a sidewalk.

I am also writing, however, to ask that you consider installing the sidewalk on the north side of the street on Ivymount Terrace. Our street has many shade trees, which means that the north side of the street gets significantly more direct sunlight. In the winter, snow sticks to the north side driveways significantly later than on the south side, and melts on the north driveways many days before it melts on the south side. Accordingly, snow removal from the sidewalks will be significantly easier if the sidewalks are placed on the north side of the street. Unless there is a substantial benefit to putting the sidewalk on the south side, therefore, it should be put on the north side of the street.

Thank you for your consideration.

Josh Koppel  
7804 Ivymount Terrace  
Potomac, MD 20854



**From:** [Matthew Plumser](#)  
**To:** [Main, Lori J.](#)  
**Cc:** [Plumser, Polina \(Aaron,Zachary,Benjamin\)](#)  
**Subject:** Willerburn Acres Community Sidewalk Proposal  
**Date:** Sunday, December 18, 2022 5:12:03 PM

---

[EXTERNAL EMAIL]

Good afternoon Ms. Main -

I am writing to express my support in regards to the installation of sidewalks in the Willerburn Acres community, of which I am a property owner and resident. I am disappointed that the sidewalks are not going to be on both sides of the streets, particularly on Fontaine Street. I would prefer to have a sidewalk available in front of my residence, so that my young children can walk safely to their school bus stop without having to cross the street in the mornings or afternoons, when traffic is noticeably higher and numerous vehicles exceed the speed limit on this road.

Since moving into the neighborhood, I have feared for the safety of my children every time they step out the door to walk to the school bus or visit their friends. Further, I have personally had a number of close calls with vehicles, particularly at night, as I walk my dog on Fontaine Street, where we have no sidewalks, no speed bumps, and very limited lighting.

The addition of sidewalks in the neighborhood is a significant and positive step forward for the safety of pedestrians in Willerburn Acres. Further, the sidewalks will enhance the aesthetics of the neighborhood and likely increase property values, given that multiple properties including my own lack so much as a curb to separate the pavement of the road with the grass, thus resulting in an unfinished appearance as well as frequent tire damage to front lawns. I look forward to the completion of this project, and encourage the county to consider further expansion of the sidewalk program to include both sides of the streets in Willerburn Acres where feasible.

Sincerely,  
Matthew D. Plumser  
7724 Fontaine Street  
Potomac, MD 20854

**From:** [B. Packer](#)  
**To:** [Marc Zweben](#); [Gonzales, Robert](#)  
**Cc:** [Holley, Geary](#); [Main, Lori J.](#); [Berrios, Juan A.](#); [cristopher.conklin@montgomerycountymd.gov](mailto:cristopher.conklin@montgomerycountymd.gov)  
**Subject:** Re: Willerburn Acres Sidewalks and Trees  
**Date:** Tuesday, December 20, 2022 1:06:37 PM

---

**[EXTERNAL EMAIL]**

Dear Mr. Gonzalez, Mr. Holley, Ms. Main, Mr. Berrios, and Mr. Conklin,

We live at 7805 Mary Cassatt Drive in Willerburn Acres. We agree with Mr. Zweben that Flexi-Pave sidewalks should be installed to avoid destroying healthy, mature trees in the right-of-way.

Mr. Zweben's points regarding cost make a lot of sense to us. Please keep us posted on any responses and decisions.

Thank you.

Bernice and Roger Packer

---

**From:** Marc Zweben <marcszweben@gmail.com>  
**Sent:** Monday, December 19, 2022 9:14 AM  
**To:** Gonzales, Robert <robert.gonzales@montgomerycountymd.gov>  
**Cc:** Holley, Geary <geary.holley@montgomerycountymd.gov>; Main, Lori J. <lori.main@montgomerycountymd.gov>; Berrios, Juan A. <juan.berrios@montgomerycountymd.gov>; cristopher.conklin@montgomerycountymd.gov <cristopher.conklin@montgomerycountymd.gov>  
**Subject:** Willerburn Acres Sidewalks and Trees

Dear Mr. Gonzales,

Is there anyone in your office who will explain why the Montgomery County Department of Transportation is so resistant to installing Flexi-Pave sidewalks to save mature healthy trees in Willerburn Acres from needless destruction? Flexi-Pave is not some sort of exotic product -- it is installed throughout the DC Metropolitan area. Indeed, the website of the local Flexi-Pave installer, Capital Flexi-Pave, includes an interactive map that shows **HUNDREDS** of projects in the area, with owners that include Gaithersburg, Takoma Park, College Park, Arlington County, the District of Columbia, the City of Alexandria, and numerous others. <http://capitolflexipave.com/about/installation-map>

The City of Takoma Park wrote of Flexi-Pave five years ago that its Public Works Department "has been very happy with the performance of the product which has been used on pathways and as an alternative to concrete sidewalk sections where tree impacts are of concern." Takoma Park's 2021 Streetscape Manual states at page 63 (copy attached to this email) that "Flexi-pave is installed throughout the city as sidewalk in areas adjacent to trees to provide oxygen and water to tree roots while

providing a flexible yet ADA-compliant surface for walking, such as ... Sidewalks, driveway aprons, and unprotected tree root zones throughout the city." Emphasis Added. College Park's 2000 Complete and Green Streets Policy, <https://www.collegeparkmd.gov/DocumentCenter/View/2782/2020-02-18-City-of-College-Park-Council-Presentation-3?bidId=>, *mandates* that "If ROW is wide enough, use an "on-grade" flexipave sidewalk section in tree CRZs."

With the Willerburn Acres sidewalk project, and other sidewalk projects as well, the Department has an opportunity to address pedestrian safety issues without needless destruction of the streetscape, just as Gaithersburg, Takoma Park, College Park, Arlington County, The District of Columbia, the City of Alexandria and numerous others do. Instead, the Department issues and stands by a proposal that reads as if it were designed to generate maximum opposition, and persists with a disregard for tree preservation that seems calculated to wreck its own program and destroy confidence in the Department.

Two weeks ago, I obtained a quote from Capital Flexi-Pave of \$20.30 per square foot to install sixty seven feet of five foot wide by four inch thick Flexi-Pave sidewalk in the front right of way at 11904 Goya Drive. The idea, which I presented to the Department, was to avoid tearing down the magnificent Pin Oak tree in the front yard of 11904 Goya. In the words of the Takoma Park City Council, this would allow the Department to use a paving product that helps provide oxygen and water to the Pin Oak roots, rather than leveling the tree, tearing up the roots and installing a concrete sidewalk.

One obvious question here is whether installing Flexi-Pave sidewalks to preserve trees will cost substantially more than tearing down the trees, grinding the stumps, grading and seeding, and installing concrete sidewalks. At \$20.30 per square foot to furnish and install Flexi-Pave, Capital is quoting a total of \$6,900 dollars to install the 67' of sidewalk. In light of this, I requested, but the Department refuses to provide, information to allow us to determine how much it expects to pay for tree removal , excavation and concrete installation for that 67' of sidewalk. Is it more than \$6,900? Less? The Department's response has been to claim, with no substantiation, that installing Flexi-Pave to save trees on 10 of the properties in issue would cost an additional \$90,000. So, the Department is claiming that it would cost \$9,000 more to install Flexi-Pave than it would cost to remove a 90' high Pin Oak with a nearly 4 foot trunk, grind the stump, grade, seed, and install a concrete sidewalk. How can that be, if Capital Flexi-Pave would only charge me \$6,900 to install a Flexi-Pave sidewalk for which the Department should certainly pay less as a volume customer? What is going on here?

One would think that a Department eager to inspire confidence and trust would want to obtain and publish cost information, and be transparent in the process. But, that doesn't happen. Instead, the Department now tells me that it will preserve our Goya Drive Pin Oak, because the trunk is on my property and not in the right of way, with a technique that it will not identify, and that it will not provide further information for me to share with an independent arborist. And as to Flexi-Pave, the Department states that "the two projects in which Flexipave was used to save one tree were in wealthier

locations within the County; Flexipave has not been used in the less-wealthy locations." Emphasis added.

To summarize, then: where numerous other jurisdictions in our area require installation of Flexi-Pave sidewalks throughout to avoid root destruction and tree removal, the MCDOT installs a few feet of Flexi-Pave to save a total of two trees, and disdains less-than-wealthy neighborhoods in its decision making.

I don't have any confidence that the Department will honor its obligations to provide documents in response to my pending Maryland Public Information Act request. But, I will push the Department to do so, and continue with my efforts, as other Willerburn Acres residents will, to shine a light on what is going on here, and to try to enlist the community's support for a sidewalk program that does not needlessly destroy dozens of beautiful, healthy, mature trees.

Sincerely,

Marc Zweben



**From:** [angela gadsby](#)  
**To:** [Gonzales, Robert](#)  
**Cc:** [Holley, Geary](#); [Main, Lori J.](#); [Berrios, Juan A.](#); [cristopher.conklin@montgomery.countymd.gov](mailto:cristopher.conklin@montgomery.countymd.gov); [Marc Zweben](#)  
**Subject:** Willeburn acres sidewalk project  
**Date:** Monday, December 19, 2022 2:03:52 PM

---

**[EXTERNAL EMAIL]**

Dear Mr. Gonzales,

I am a resident of 7617 Fontaine Street and would like to comment on the proposed project. While I am very much an advocate for pedestrian safety and would like to have sidewalks in my neighborhood, I am not at all supporting the removal of so many old, well established trees. They not only frame our beautiful streets but also provide a canopy density for wildlife in the area.

After some research particularly in the Takoma Park area it is clear that destroying the trees is not the only option. The Flexi-pave option seen in many locations (good illustrations can be found at 711 Hudson St., 207 Spring Ave and 82 Elm Ave in Takoma Park) clearly can save those trees and keep our neighborhood bountiful and green.

Given the level of dissatisfaction in the neighborhood about the proposal it makes sense for MCDOT to install flexi-pave sidewalks in those areas containing the medium to large diameter trees designated for destruction.

Thank you for your attention to this matter,

Angela Gadsby

**From:** [Minka Goldstein](#)  
**To:** [Main, Lori J.](#); [Minka Goldstein](#); [Marc Zweben](#); [Rochelle Sobel](#); [Rochelle Sobel](#)  
**Subject:** My official statement:  
**Date:** Monday, January 23, 2023 12:20:41 PM

---

**[EXTERNAL EMAIL]**

Lori, please pass my comments on to the county representatives and whomever else is involved in this matter. Here goes:

I believe we need sidewalks on some streets in Willerburn Acres, but not on all you have identified.

So here below is my summary and suggestions:

1. Goya Drive, Gainsborough Road and Fontaine Street would be the streets that most need sidewalks. They have the most traffic and lead to many other streets.
2. Goya often has preschool children's classes walking to the woods. Goya drive needs sidewalks ALL THE WAY TO THE PARK ENTRANCE. This is because of the pre-schoolers who walk to the woods down this street. More might go if there were sidewalks all the way.
3. Gainsborough is a very dangerous road! The road is narrow, dark, and has no curbs. Walking along it is treacherous. It needs sidewalks in my opinion, all the way to Fontaine. It also needs curbs and widening. I hope all three will be done in this project.
4. Mary Casatt and Ivymount dont have the traffic the three streets above have. I would consider them optional for sidewalks, but all should have curbs. If those who live on those streets dont want sidewalks, they should not be forced to have them. But for the three roads Fontaine, Goya and Gainsborough, I strongly urge sidewalks.
5. Greenleaf is another street that is a maybe for sidewalks, but that street has more traffic than ivymount or mary casatt. The residents should decide if they want sidewalks or not.
6. Maintenance of streets and sidewalks is necessary! It is vital! We dont want tripping hazzards. I assume that you depend on homeowners to let you know when a sidewalk sinks or is raised so that there is a danger of tripping, but most homeowners do not do this. Therefore how do we assure they are safe?
6. Why does the sidewalk itself need to be 5 feet wide? Isn't this overkill? What is the width of the sidewalk on Gainsborough and Post Oak? For sure they are not 5 feet wide.
7. PERMEABLE sidewalks would be FAR BETTER THAN concrete ones. I am in agreement with Marc Zweeben on this. PLEASE LISTEN TO HIS VIEWPOINT AND CONSIDER DOING THESE PERMEABLE SIDEWALKS WHERE LARGE HEALTHY TREES WOULD NEED TO BE REMOVED.
8. As a realtor, I know that many people consider sidewalks a plus when buying

a home. I do not ever recall anyone stating they did not want sidewalks in front of their home, but many buyers state that a sidewalk would be a plus.

9. All those who are getting sidewalks need to remember that there is a county law about removing snow on sidewalks in front of your home. I don't know what the law is, but I believe that this should be disclosed to everyone who might be having a sidewalk installed in front of their homes. I assume that this will add to the cost I incur when I hire someone to remove snow from in front of my house.

Thank you for reading and considering my comments.

Minka Goldstein

Cell Phone: 301-613-7400

[minkagoldstein@gmail.com](mailto:minkagoldstein@gmail.com)

As a Realtor, I am never too busy to help anyone you refer to me. I will provide quality service to that person, no matter where in the world they live!

**From:** [D. Duong](#)  
**To:** [Main, Lori J.](#)  
**Subject:** Formal Testimony opposing sidewalks in Willerburn Acres  
**Date:** Tuesday, January 3, 2023 10:10:29 AM

---

**[EXTERNAL EMAIL]**

Dear Lori Main,

This is our formal testimony opposing the sidewalk project proposed on my street within our section of a Willerburn Acres.

We are opposed to the sidewalk proposal because

- + this is creating a problem where there is no problem

- + our street is not a through street we have very minimal traffic - sidewalks are unnecessary.

- +this will eliminate approximately 83 mature trees as well as bushes landscaping and animal habitats in our neighborhood, one of the most valued assets in the community's ecosystem through Willerburn Akres. Over 30 will require air excavation up for near future sidewalks.

- + we bought in this neighborhood because I love the look and country feel cement sidewalks will take away the nature aesthetic and create an unbalanced look on the street with a substantial portion of the impacted driveways will be cement - wear 98% now are black asphalt.

- + changing the grass front lawns to partial cement area can cause additional drainage problems - we have heavy drainage running down the hill already during rain.

Thank you,

Diep Duong and Nga Nguyen



Address: 7600 Glackens Dr., Potomac, Md 20854

Email: [dduongng@gmail.com](mailto:dduongng@gmail.com); [diepngason@gmail.com](mailto:diepngason@gmail.com)

**From:** [Debra Panitch](#)  
**To:** [Friedson's Office, Councilmember](#); [Albornoz's Office, Councilmember](#); [Jawando's Office, Councilmember](#); [Glass's Office, Councilmember](#); [Sayles's Office, Councilmember](#); [Main, Lori J.](#)  
**Subject:** Willerburn Acres/ Mary Cassatt/ Ivymount Sidewalks  
**Date:** Friday, January 20, 2023 4:25:21 PM

---

**[EXTERNAL EMAIL]**

Dear Councilmembers and MCDOT representative,

I live in Willerburn Acres on Mary Cassatt Drive and I am opposed to sidewalks on our street. While we are technically part of Willerburn Acres, we are separate in that we do not connect to the other busier roads in the development off of Seven Locks Road. **Our street makes just one circle with a cul de sac and is not a thoroughfare like other proposed streets in Willerburn.**

I have lived in my house for 28 years, raised a family here, been a dog owner/walker, walk to synagogue and have never felt the need for sidewalks for safety for myself or my children as our traffic is so low. The proposed sidewalk will destroy our trees, and the rural-like feeling of our neighborhood. There are so many better places to install sidewalks that have more traffic and safety concerns than our little Mary Cassatt/Ivymount street.

**Please require MCDOT to separate our street from the greater project scope of Willerburn Acres and not install sidewalks on it regardless of the greater Willerburn project outcome.**

**I also request that should sidewalks be installed in the larger Willerburn Acres area (Gainsborough/Fontaine/Greenleaf/Goya) that you encourage MCDOT to save the trees and use widely-used pervious flexible sidewalk paving material, called Flexi-Pave, that will foster and protect our roadside trees instead of requiring their destruction.**

Thank you.

Debra Panitch  
Potomac, MD 20854  
301-299-3741

**From:** [Avi Hofman](#)  
**To:** [Main, Lori J.](#)  
**Cc:** [Angela Gadsby](#); [Gonzales, Robert](#); [Holley, Geary](#); [Berrios, Juan A.](#); [Bilgrami, Khursheed](#); [David Fuller](#)  
**Subject:** Re: Written testimony opposing the Willerburn Acres Community Sidewalk Proposal  
**Date:** Friday, December 23, 2022 12:30:04 PM  
**Attachments:** [image002.png](#)  
[image003.png](#)  
[image004.png](#)  
[image005.png](#)  
[image006.png](#)  
[image007.png](#)  
[image008.png](#)  
[Ivymount Mary Cassatt Letter and Petition 12142022.pdf](#)

---

**[EXTERNAL EMAIL]**

I would like to reiterate and re enforce my strong opposition to the planned sidewalk project for our neighborhood. All of the arguments that have been made by the group opposing this plan on Ivymount and Mary Cassatt (see attachment below), hold in exactly the same way for Fontaine and the other streets that would be affected by this plan.

Now that you have testimony by Rochel Sobel that ASIRT made NO request for these sidewalks and that in fact the request came from one person who no longer lives in the neighborhood, I would request that you cancel the entire project and inform me as soon as possible that it has been cancelled. The vast majority of residents in this neighborhood oppose it and there is really no tenable argument in favor of this effort and many that argue strongly against moving forward.

Thank you for confirmation that this project is no longer planned.

Happy holidays to all.

Avi Hofman  
7617 Fontaine St, Rockville, MD 20854

On Fri, Dec 16, 2022 at 10:20 AM Main, Lori J. <[Lori.Main@montgomerycountymd.gov](mailto:Lori.Main@montgomerycountymd.gov)> wrote:

Hello Mr. Hofman,

Thank you for submitting your written testimony regarding the sidewalk proposal for the Willerburn Acres community. I will post your testimony to the Record and in our files.

I hope this finds you well and enjoying the day. If you have any questions, please feel free to contact me.

Best,

*Lori*

**Lori Jean Main**

**Planning Specialist**

**Annual Sidewalk Program**

**Montgomery County Department of Transportation**

Division of Transportation Engineering

100 Edison Park Drive

4th Floor

Gaithersburg, Maryland 20878

[lori.main@montgomerycountymd.gov](mailto:lori.main@montgomerycountymd.gov)

240-777-7271



Stay connected







For more helpful Cybersecurity Resources, visit: <https://www.cisa.gov/be-cyber-smart>

---

**From:** Avi Hofman <[avi.hofman@gmail.com](mailto:avi.hofman@gmail.com)>  
**Sent:** Friday, December 16, 2022 9:32 AM  
**To:** Main, Lori J. <[Lori.Main@montgomerycountymd.gov](mailto:Lori.Main@montgomerycountymd.gov)>  
**Cc:** Avi Hofman <[avi.hofman@gmail.com](mailto:avi.hofman@gmail.com)>; Angela Gadsby <[gadsby61@gmail.com](mailto:gadsby61@gmail.com)>  
**Subject:** Written testimony opposing the Willerburn Acres Community Sidewalk Proposal

[EXTERNAL EMAIL]

I would like to register my strong opposition to the proposal to install sidewalks in the Willerburn Acres Community. I reside at 7617 Fontaine Street and I feel that all the residents of this neighborhood would be very negatively impacted by this proposal.

My reasons are many and I will highlight as few of them.

Environment: I believe that cutting down old growth trees is indefensible. This will definitely detract from the attractiveness and desirability of Willerburn Acres as a residential neighborhood. Replacing them with new trees in other parts of Montgomery County is in no way a solution. The argument that the environmental benefit comes from people taking more public transportation once there are sidewalks

is pure fantasy. The reason people do not take public transportation has nothing whatsoever to do with sidewalks. The environmental impact of replacing grass with cement as well as the impact of the work itself is also terrible in our time of worsening climate change. On the environmental ledger this proposal has no redeeming value and is a complete negative.

Safety: As far as I can find any information, there have been no accidents in this neighborhood and certainly none that would have been prevented with sidewalks. People know to be careful both when driving as well as when walking - that's the reason for the lack of accidents. It is even possible that once sidewalks were to be installed drivers would be less cautious and pedestrians would still walk in the street. We are a community where people often walk in groups and sidewalks would not work for groups. Many people, and especially children would still walk in the street. I raised three children in Willerburn Acres and I never had any concern for their safety walking around on our sidewalk-less streets. There is no proof that sidewalks would improve safety and it is even possible that it would make it worse.

Impact: Nowhere has the impact on the type of neighborhood we have been taken into account. The neighborhood you are proposing to affect, has a rural feel due to the old growth trees and the lack of sidewalks. That is one aspect that makes the neighborhood so attractive and in such high demand. This aesthetic would be completely

obliterated by your proposal. Many of us have chosen to live here because of the "feel" of the area and that would be destroyed by the proposal.

Cost: This is a very costly project using my tax dollars. There is a feeling that since there is an approved budget this is viewed as "free" money that must be spent. I'm sure that these funds can be much more soundly employed in many other areas of need in the county. If there are no better uses for these funds, lowering our tax rate would be a better solution. This is simply a waste of money.

Disturbance: This project is likely to disrupt our lives for two years or more. The noise, the pollution and the reduced access would be a very negative consequence of this proposal.

In conclusion, if the goal of this proposal is the environmental benefit, it must be turned down. There is NO proof that the implied environmental benefits you outline (fewer cars) would ever occur. In fact, it is very unlikely. There are also many environmental costs that are not adequately taken into account.

If the goal is safety, there is no evidence that there is any safety issue that needs to be addressed. There is also no evidence that this proposal would address any safety issue should one ever arise. There are much better and cheaper ways to deal

with road safety. Better lighting would be most welcome. That would make it safer to walk on the streets. Speed limit signs would also probably be warranted. In an extreme case where a well planned study showed that there was a problem, a couple of speed bumps would be more than enough. I believe that a request for speed bumps has been turned down in the past - because **there wasn't enough traffic!**

My understanding is that this proposal is being driven by one individual who lives in our neighborhood. Before spending all of the money on developing the proposal it would have been better for the county to do a poll of the residents to find out whether the majority of residents supported it. I am convinced the answer would have been a resounding no.

I understand that a similar program was recently undertaken in the Kemp Mill neighborhood of Montgomery County. Please provide data on the increase in public transportation usage as well as the reduction in the number of accidents that resulted from this program since these seem to be the desired outcomes. If you do not have such information and since the proposal is built on these assumptions, please **put the program for Willerburn Acres on hold** until you are able to assess the results in the case of this similar undertaking.

Please include this letter in the official responses to the proposal.

Thank you,

Avi Hofman

7617 Fontaine Street



**From:** [Debora Gagneten](#)  
**To:** [Main, Lori J.](#)  
**Subject:** Mary Cassatt/Ivymount (Willerburn Acres)  
**Date:** Monday, January 23, 2023 7:32:29 PM

---

[EXTERNAL EMAIL]

My name is Debora Gagneten , and I live on Mary Cassatt Dr. I am testifying today in opposition to the proposed sidewalks on Ivymount Terrace and Mary Cassatt. I would like to request that Ivymount Terrace and Mary Cassatt Dr be removed from the sidewalk proposal. The overwhelming majority of residents on these two streets do not want the sidewalks. A detailed petition was submitted to the county on December 14, 2022. Ivymount and Mary Cassatt are not connected to the other part of Willerburn Acres, are not thru streets, and have very little street traffic. I believe the county should redirect its resources and prioritize sidewalks in more heavily trafficked streets. The sidewalks are simply not necessary on Mary Cassatt and Ivymount Terrace.

Thank you again. Your consideration of this matter is very much appreciated.

Debora Gagneten

**From:** [Allan Barall](#)  
**To:** [Main, Lori J.](#)  
**Cc:** [niraberry@gmail.com](#); [jiltender@gmail.com](#); [allison@greenshome.net](#); [Karen P. Barall](#)  
**Subject:** Written Testimony Opposing the Willerburn Acres Community Sidewalk Proposal (BARALL)  
**Date:** Tuesday, December 6, 2022 7:39:02 PM  
**Attachments:** [Sidewalk Testimony v2.docx](#)

---

**[EXTERNAL EMAIL]**

To: Montgomery County Division of Transportation Engineering; 100 Edison Park Drive, 4th Floor; Gaithersburg, MD 20878; 240-777-7271; [Lori.Main@montgomerycountymd.gov](mailto:Lori.Main@montgomerycountymd.gov)

From: Col. Allan Barall; 7624 Mary Cassatt Drive; Potomac, MD 20854; 202-316-4689; [allan.barall@gmail.com](mailto:allan.barall@gmail.com)

1. This is my formal testimony opposing the Willerburn Acres Community Sidewalk Proposal

2. My name is Colonel ALLAN D. BARALL, and my family and I reside at 7624 Mary Cassatt Drive, Potomac. I am an adult over the age of 18, a Montgomery County, Maryland resident and I am fully competent to give sworn testimony in this matter.

3. I am opposed to the sidewalk proposal for the following reasons:

a) Mary Cassatt Drive is not a through-road. It does not connect other major roads. Rather, it loops from and back to Seven Locks Road as the only major road that Mary Cassatt Drive connects to. The only traffic along Mary Cassatt Drive is from its own street residents, delivery and service trucks (e.g. mail, landscaping, deliveries), and guests. It is a relatively quiet and safe street to begin with.

b) The letter from the Montgomery County Department of Transportation, dated November 18, 2022, states in its opening sentence that this sidewalk proposal "... is in furtherance of the County's Climate Action Plan ..." I obtained and have reviewed this June 2021 Climate Action Plan, and I find no support for installing sidewalks and this proposed sidewalk project. This opening justification has no merit.

c) The second paragraph of the letter states that, "Providing safer access for the disabled and improving pedestrian access to schools and nearby public transportation or public facilities is the major goal for the Sidewalk Program." Aside from the contradiction where I cannot reconcile the furtherance of climate action with safe community access, there are other more immediate ways to address safety and access that have not yet been attempted. First, we have multiple streetlights frequently out on both Mary Cassatt Drive and the adjacent Ivymount Terrace making nighttime visibility difficult and creating unsafe conditions at night. Second, there are no signs posting speed limits on any street that I've seen in Willerburn Acres. Third, installing speed bumps would force vehicles to slow down to safer speeds. Fourth, the street itself has many potholes and needs general upkeep and maintenance. To summarize, well maintained and consistently lit streets with posted speed limits and speed bumps would do a great deal toward making the street much safer than it is now, and before any need for sidewalks.

d) Sidewalks would ruin the street and neighborhood aesthetic. Every resident on the street

purchased a home there without sidewalks, and presumably for the look and feel of the street. When visiting, our guests from outside the area have frequently remarked that we live in a very attractive neighborhood. Concrete sidewalks would mar this aesthetic.

e) The sidewalk installation process is likely to have a detrimental impact on the underground sewer lines that run from the houses to main sewer lines.

f) The environmental impact of removing large swaths of grass and many dozens of trees is unacceptable. This also runs counter to aim of the County Climate Action Plan. And, while the County states that new trees would be planted elsewhere, it does not make sense to remove the trees and grass in the first place. Additionally, the neighborhood has natural hills and significant water drainage where the drainage issues could be exacerbated by installing concrete sidewalks.

--

Allan Barall  
Col. (U.S. Army, Ret.)

**From:** [Susan Milestone](#)  
**To:** [Main, Lori J.](#)  
**Subject:** Formal Testimony opposing sidewalk project Mary Cassatt Dr. Pleas respond  
**Date:** Tuesday, January 24, 2023 12:48:06 PM

---

**[EXTERNAL EMAIL]**

Hi Lori,

I am trying again to get my formal testimony to you, this is the 3rd time from 3 different email addresses. I think the previous emails must of ended up in your junk folder, I hope you get this one.

**Please respond to this email so I know you received my formal testimony**

I had emailed this to you on Dec 13th from my [snafangi@icloud.com](mailto:snafangi@icloud.com) email and on January 4th from [susan@susanmilestone.com](mailto:susan@susanmilestone.com), but I think it ended up in your spam folder, I had emailed Juan from my [snafangi@icloud.com](mailto:snafangi@icloud.com) email and he said he found my other emails to him in his spam folder.

**Please let me know if you receive this email.**

I signed up for the virtual sidewalk meeting on Jan 25th too, but I used my snafangi email, do you think I should sign up again using another email? I don't want to be left out of the virtual meeting on the 25th. I signed up to testify, but if you receive this written testimony then I may not need to testify, I would like to attend the meeting.

Please let me know what I should do if I do not receive the link for the virtual meeting tomorrow, I do check my junk folder everyday. I'm just a little worried since you are not receiving any of my emails

12/12/2022

Dear Lori Main,

Please reply to this email so I know you received it.

This is our FORMAL TESTIMONY opposing the sidewalk project proposed on Mary Cassatt Dr within our section of Willerburn Acres.

We are opposed to the sidewalk proposal for the following reasons:

- We have lived on Mary Cassatt Dr since 1970, I grew up on this street, there has never been any accidents that I am aware of. This street is very safe and quiet, not many cars at all. There is no need for a sidewalk on this street.
- Our street is not a through street. We have minimal traffic, sidewalks are unnecessary.
- This will eliminate many trees and bushes, landscaping, and animal habitats in our neighborhood, one of the most valued assets in the community's ecosystem.
- The cement sidewalk will take away the natural aesthetic and create an unbalanced look on the street, with a substantial portion of the impacted driveways will be cement, where most of the driveways now are black asphalt

-Changing the grass front lawns to partial cement areas can cause additional drainage problems, which will effect the drainage of rain water going into the storm drain in our front yard.

Thank you,  
Susan Milestone & Norma Milestone  
7708 Mary Cassatt Dr  
Potomac, MD 20854  
[snafangi@icloud.com](mailto:snafangi@icloud.com)

Thanks,  
Susan Milestone  
301-351-2506



**From:** [Ricki A. Cytryn](#)  
**To:** [Main, Lori J.](#)  
**Subject:** No to Sidewalks  
**Date:** Monday, January 23, 2023 3:56:14 AM

---

[EXTERNAL EMAIL]

Ms. Main,

We are opposed to sidewalks on Mary Cassatt Drive and Ivymount Terrace.

First, these are not through- streets. Only people who live here or visitors use this two streets. There have been no car accidents on these streets despite the high number of pedestrians walking from their homes to local schools and places of worship on 7 Locks Road.

Second, we already have flooding problems when it rains-everyone has a ditch in front of his home but these are inadequate to stop flooding on the streets. Putting in sidewalks would worsen this problem as there would be even less ground to absorb the water than there is now.

Finally, Montgomery County has been promoting planting more trees and rain runoff treatment by homeowners to support environmental concerns. These sidewalks would have the opposite effect of cutting down mature trees and vastly reducing rain absorption wherever they are laid.

Thank you.

Ricki and Al Cytryn  
703-282-4348

**From:** [Carolyn Kohn](#)  
**To:** [Main, Lori J.](#)  
**Subject:** Willerburn Acres Community Sidewalk Proposal  
**Date:** Tuesday, December 6, 2022 10:02:28 AM

---

[EXTERNAL EMAIL]

Janice C. Kohn & Arnold J. Kohn

7711 Ivymount Terrace  
Potomac, Maryland 20854

My husband and I live at the above address. We are writing to oppose the Willerburn Acres Community Sidewalk Proposal. Ivymount Terrace ends in a cut de sac and therefore, the traffic is fairly light.

There are quite a few dogs in the surrounding neighborhood that are walked several times a day. When I walk my dog and we meet another dog walker, we require more than six feet of separation to keep everyone safe. To do this, it is impossible to be limited to the space of a sidewalk.

As a result of the covid-19 pandemic, we are still practicing social distancing so we would not be able to stay on a sidewalk.

Loss of shade from the removal of the tree cover would have a major environmental impact. This would substantially increase the use of electricity for air conditioning.

For these reasons, we feel the sidewalk on Ivymount Terrace is unnecessary and will have a detrimental affect on the environment.

**From:** [Jill Tender](#)  
**To:** [Main, Lori J.](#)  
**Subject:** Opposition to Ivymount/Mary Cassatt sidewalks  
**Date:** Thursday, December 8, 2022 10:35:52 AM

---

**[EXTERNAL EMAIL]**

12/8/22

Dear Lori Main,

This is my **FORMAL TESTIMONY** opposing the sidewalk project proposed on Mary Cassatt Dr & Ivymount Terr, within our section of Willerburn Acres.

I am opposed to the sidewalk proposal for MANY reasons. Here is my list:

- 1) You are citing there is a problem when there is NO problem. There have never been any reported injuries or issues along either street throughout its 50+ year existence.
- 2) Mary Cassatt Dr and Ivymount Terr are not through streets. We have very minimal traffic in our section of Willerburn Acres - sidewalks are unnecessary.
- 3) In particular, I live next to the cul-de-sac at 7716 Ivymount Terrace. You are not building sidewalks on the other 2 cul-de-sacs off of Mary Cassatt so your plan would be inconsistent to continue them along my street. Obviously I am opposed in general, but if you decide to follow through with the project it would make more sense to end the sidewalks where Mary Cassett begins.
- 4) In terms of safety, it would make much more sense to repave our patched up roads and add additional lights along our dark street than spend taxpayers money to add the unwanted, unsolicited sidewalks.
- 5) Changing the grass front lawns to partial cement areas can cause additional drainage problems- We have heavy drainage running down the hill already during rain. More concrete= more runoff.
- 6) This could increase the liability of the owners of the houses that have sidewalks. If there happens to be ice or uneven cement and someone falls it would be unexcusable if we were blamed for the accident. Additionally, we would be required to shovel or spend money hiring someone to clear snow. I DON'T want that responsibility.
- 7) This will eliminate approximately 83 mature trees as well as bushes, landscaping, and animal habitats in our neighborhood. Over 30 will require air excavation for roots near future sidewalks. I know you will replace the trees but they are invaluable. It is a completely lame excuse that this plan is environmentally friendly. LAME.
- 8) Not that you care whatsoever, but part of the reason we bought a house in this neighborhood was because of the beautiful look and country feel - cement sidewalks will take away the natural aesthetic and create an unbalanced look on the street, with a substantial portion of the impacted driveways will be cement -where 98% now are black asphalt.

Thank you,  
Jill Tender  
7716 Ivymount Terrace  
[jilltender@gmail.com](mailto:jilltender@gmail.com)



**From:** [KAREN G MEISTER](#)  
**To:** [Main, Lori J.](#)  
**Subject:** Sidewalks on Mary Cassatt Drive  
**Date:** Thursday, January 19, 2023 3:03:57 PM

---

[EXTERNAL EMAIL]

Hi Ms. Main-

I am writing to express my opposition to the sidewalk proposal on my street. We raised four children here and never had a problem. Have lived here since 1986. We ride bikes and take walks. When my husband was alive, we took walks with him using his walker or being pushed in a wheelchair. Now I take my grandchildren on walks around here. There is not that much traffic on Mary Cassatt and Ivymount.

I would think there are more "needy" areas in Montgomery County where maybe the density of children walking to school is greater. Or, should we be putting money into more crosswalks on major thoroughfares (e.g. Georgia Avenue, Arcola, Tuckerman, Seven Locks, Montrose or streets where fatalities, accidents have occurred?

If sidewalks are added, we are going to be at the mercy of homeowners to shovel. It's hard enough doing our driveways. Streets are safer when the county plows!

I know there are a few people on our street who support this but I believe for the most part, most homeowners see installing sidewalks at this point as a nuisance. Surely the county has places to spend the funds in an area more needy or more risky.

Thank you for considering these comments. I truly hope this isn't a DONE DEAL. Happy to chat further if you want.

Karen Meister  
7720 Mary Cassatt Drive  
Potomac, MD 20854  
703201-6952



Eric and Mira Silberg  
7728 Ivymount Terrace  
Potomac, MD 20854

To: Division of Transportation Engineering  
100 Edison Park Drive, 4<sup>th</sup> Floor  
Gaithersburg, MD 20878  
240-777-7271  
Lori.Main@montgomerycountymd.gov

Subject: Written Testimony regarding Willerburn Acres Community Sidewalk Proposal

As the owners and residents of 7728 Ivymount Terrace, we are providing the following comments regarding the sidewalk construction plan described in the Willerburn Acres Community Sidewalk Proposal, received November 25, 2022. Ivymount Terrace is a quiet street, terminating in a cul-de-sac. The only alternative exit is via the intersecting Mary Cassatt Drive that is equally quiet. There is no through traffic and generally few cars, with the vast majority belonging to residents and guests. Up until the cul-de-sac, the road is straight with clear sight-lines. We have lived at this address for over 15 years and the lack of sidewalks has never been an issue. In fact, we find the lack of sidewalks improves the sense of community and overall quality of the neighborhood. To our knowledge, there has never been an incident with pedestrians on this street. The proposed plan presents a number of issues for our street and the county land adjacent to our property.

Originally constructed without sidewalks, the south side of Ivymount Terrace has little space between the paved roadway and the drainage gully that runs along the street. During a site visit, the Construction Representative took measurements and determined that there was not enough space for the preferred 3 feet of grass to separate the sidewalk from the roadway, and due to the slope of the land leading to the gully, would require regrading. This would provide little separation of the sidewalk from the road and force mailboxes to be turned sideways. While there is no enforced uniformity on our street, this would both look bad and cause our mail carriers additional difficulty in delivering our mail. Fire hydrants, utility access points, drains, and other items are also installed within the county right of way along the path of the proposed sidewalk. The sidewalk will therefore need to weave and jog awkwardly around these obstructions, as described in the proposal. Furthermore, there are open drains along the proposed route of the sidewalk which, unless completely reconstructed, could present a hazard to people utilizing the sidewalk. See the pictures of available space and some obstructions to the planned path below.



Less than 6 ft. between street and gully



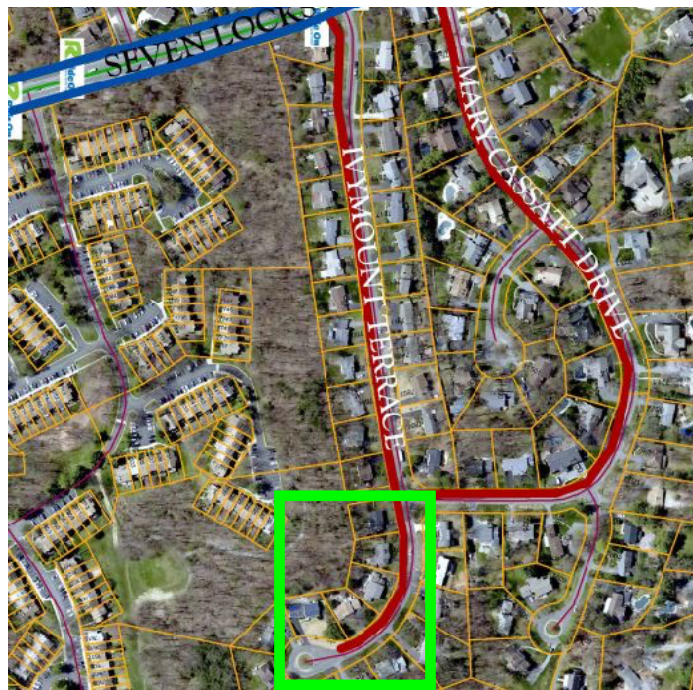
Sewer and drain near road



Multiple obstructions in path

Runoff and drainage on Ivymount Terrace is already an issue, where even moderate rains can cause significant amounts of water to flow down the street, through the gullies, and into the sewer system. As our property is located at the bottom of the hill, we have worked to ensure that runoff can flow freely into the drains, minimize obstructions, and minimize any localized flooding. As described by the Construction Representative, installation of the sidewalk would require regrading the land near the drainage gully, will probably narrow and change the fall lines into the gully, and the additional hard surface of the sidewalk will force more water to flow through the drains rather than being absorbed by the grass. All these combined could make flooding more likely and require additional costly remediations and reconstruction.

In the Willerburn Acres proposal, the only cul-de-sac that is getting a sidewalk is on Ivymount Terrace. Every other cul-de-sac in the neighborhood is bypassed. If there were to be a sidewalk along Ivymount Terrace, there is certainly no reason for it to extend past the intersection with Mary Cassatt Drive. As highlighted in the image below, this section of sidewalk is particularly pointless as there is no possibility of through traffic and only a few houses are affected. The appearance would be especially unattractive with the sidewalk arbitrarily ending right before the circle. The only public transportation, a school bus, that drives on Ivymount Terrace stops before this intersection and then proceeds back up Mary Cassatt Drive. While it is our opinion that sidewalks on Ivymount Terrace and Mary Cassatt Drive are generally unnecessary and unwanted, continuing the sidewalk into the cul-de-sac is additionally inconsistent with the rest of the plan.



Cul-de-sac on Ivymount Terrace

Thank you for your consideration of our concerns in this matter. If you have any questions, please contact us via email at [ericstilberg@me.com](mailto:ericstilberg@me.com).

**From:** [Mira Silberg](#)  
**To:** [Main, Lori J.](#); [ICE Eric Silberg](#)  
**Subject:** Opposing Sidewalk Ivymount Terrace/Mary Cassatt  
**Date:** Thursday, December 8, 2022 5:05:04 AM  
**Attachments:** [Sidewalk written response.pdf](#)

---

[EXTERNAL EMAIL]

Good Morning-

Please see attached letter. In addition to concerns listed, we would like to add that these planned sidewalks do not seem safe or ADA compliant. For example, when we met with Juan last week, he showed us that the sidewalks will not have a curb and go up to the gulley. Cars can drive right onto the sidewalk, hitting people walking by. In addition, kids/elderly walking or biking can fall right into the gulley. Eroding soil from being a street with a steep elevation, will make it more dangerous. We have already had numerous flooding from the hill. As a family that has a handicapped member, this is not safe. Please see attached PDF letter and confirm receipt.

Sincerely,  
Eric and Mira Silberg

**From:** [Gil Ehrenkranz](#)  
**To:** [Main, Lori J.](#)  
**Subject:** Follow-Up to Prior E-Mail  
**Date:** Thursday, January 5, 2023 2:21:21 PM

---

[EXTERNAL EMAIL]

January 5, 2023

Lori,

This is my FORMAL TESTIMONY opposing the sidewalk project proposed on my street within our section of Willerburn Acres.

I'm writing with respect to the ill-advised county plan to install sidewalks on Mary Cassatt Drive. Please note that my wife & I are residents at 7800 Mary Cassatt Drive.

It would have been advisable to send out a licensed engineer first before embarking on this plan. I have been accumulating visual evidence of problems that are likely to occur in the event the sidewalk plan proceeds as planned. In addition, there is no necessity for sidewalks. I've been living here for 23 years and neither my wife nor I are aware of any traffic accidents involving pedestrians on Mary Cassatt Drive. Are you? In fact, Mary Cassatt Drive is about 10 years overdue for repaving, and in its current condition, one cannot travel more than 20 mph due to the huge number of bumps that one encounters on Mary Cassatt Drive. I invite you to visit and see for yourself. It's really something to experience.

I would like to offer oral testimony in opposition to this plan, and also present evidence that proceeding with the plan will actually make conditions more dangerous, especially at the intersection of Mary Cassatt Drive & Gauguin Court.

Best,  
Gil Ehrenkranz

**From:** [Menachem Katz](#)  
**To:** [Main, Lori J.](#)  
**Subject:** FORMAL TESTIMONY--Opposition to Sidewalk Proposal  
**Date:** Friday, December 16, 2022 9:35:21 AM

---

**[EXTERNAL EMAIL]**

Dear Lori Main,  
December 16, 2022

My name is Menachem Katz. I reside at 7802 Ivymount Terrace, Potomac, Md, 20854. Set forth below, is my FORMAL TESTIMONY in connection with the Willerburn Acres Community Sidewalk Proposal dated November 18, 2022. My TESTIMONY pertains to my immediate neighborhood of Ivymount Terrace (IT) from Seven Locks Road to the start of the cul de sac and Mary Cassatt Drive (MCD) from Seven Locks Road to Ivymount Terrace.

I am opposed to the sidewalk proposal, for among other reasons, because it will create problems where there aren't any apparent problems, such that the County has failed to show a demonstrable need for sidewalks in my immediate neighborhood.

MCD from Seven Locks to IT and IT to the cul de sac are not through streets, neither has more than minimal traffic, and for the most part they are used only by the homeowners who live there and service people.

There are less drastic measures than installation of sidewalks that can adequately address any perceived safety concerns. They include, installing additional street lighting and curbs.

The plan contemplates the elimination of approximately 83 mature trees as well as bushes, landscaping, and animal habitats in one of most valued assets in the community's ecosystems. In this connection, more than 30 trees will require excavation for roots near future sidewalks.

I purchased a house in the neighborhood approximately 35 years ago, in large measure because of its "look" and "country feel." Cement sidewalks will take away from the natural aesthetic and create an unbalanced look on the street. A substantial portion of the impacted driveways will be made of cement whereas currently, 98% are black asphalt. In addition, changing the grass front lawns to partial cement areas can cause additional drainage problems because of the already existing heavy draining down the hill.

As a long term resident and taxpayer of Montgomery County, I resent the manner in which the plan has been presented to home owners such as myself. Prior to receipt of the sidewalk proposal from MCDOT dated November 18, 2022, I was not made aware of any ongoing "review of the schools and numerous pedestrian generators surrounding the Willerburn Acres community," or of the "County's Climate Action Plan." Where is the data, if any, to support "public use" and "need for the community at large" upon which sidewalk decisions are supposedly made as stated in the "Sidewalk Program FAQ." Insofar as I am aware, my immediate neighborhood was not canvassed about any safety concerns regarding walking in the neighborhood. And, lastly, where is the data if any regarding the number of pedestrians that have been struck by a car in my immediate neighborhood (hopefully no one).

In conclusion, I am opposed to the Sidewalk proposal for my immediate neighborhood because no need has been demonstrated by the County to alter the status quo.

Sincerely,

Menachem Katz  
7802 Ivymount Terrace  
Potomac, MD 20854  
[katz.menachem@gmail.com](mailto:katz.menachem@gmail.com)



202-439-6220

**From:** [Rachel Lynn Zack](#)  
**To:** [Main, Lori J.](#)  
**Subject:** Formal Testimony regarding Ivymount Terrace & Mary Cassatt Drive Sidewalks  
**Date:** Wednesday, December 14, 2022 12:24:51 PM

---

**[EXTERNAL EMAIL]**

December 14, 2022

Dear Lori Main,

This is my FORMAL TESTIMONY opposing the sidewalk project proposed on my street within our section of Willerburn Acres.

I am opposed to the sidewalk proposal because:

- 1) This is creating a problem where there is no problem.
- 2) My street, Ivymount Terrace, is not a through street. We have very minimal traffic and sidewalks are unnecessary.
- 3) This project will eliminate approximately 83 mature trees, one of the most valued assets in the community's ecosystem throughout Willerburn Acres, as well as bushes, landscaping, and animal habitats in our neighborhood. More than 30 of the trees will require excavation for roots near future sidewalks.
- 4) Changing the grass front lawns to partial cement can cause additional drainage problems. We already have copious drainage running down hill during heavy rains. There is currently a drainage system in place that runs along the street and under each driveway. Building sidewalks without accounting for this very large issue would be disasterous.
- 5) My husband bought, and we continue to stay, in this neighborhood because we love the look and country feel; cement sidewalks will take away the natural aesthetic and create an unbalanced look on the street. A substantial portion of each driveway impacted will be cement, whereas they are now 98% black asphalt.

Thank you,

Rachel Lynn Zack  
7806 Ivymount Terrace  
Potomac, MD 20854  
[rachel4daughters@yahoo.com](mailto:rachel4daughters@yahoo.com)

**From:** [Susan Abraham](#)  
**To:** [Main, Lori J.](#)  
**Subject:** Statement of Opposition to the MCDOT sidewalk installation proposal for Willerburn Acres  
**Date:** Tuesday, January 24, 2023 12:07:34 AM

---

**[EXTERNAL EMAIL]**

Dear Ms. Main,

My name is Susan Abraham and I live on Ivymount Terrace in Potomac. I wish to formally acknowledge my opposition to the sidewalk proposal, specifically the inclusion of Ivymount Terrace and Mary Cassatt in this proposal. I understand that the MCDOT sidewalk proposal's major goal is pedestrian safety. I wish to inform you that I have lived on Ivymount Terrace for almost 39 years and I see no increase in the number of cars driving up and down this street. And, to my knowledge not a single pedestrian has been hit by a car or school bus or trash truck as children have walked and played and adults have walked and jogged on this street during that time. I myself as a lifelong walker have walked the Ivymount Terrace-Mary Cassatt Drive circuit for decades at all hours of the day. I have never had a safety incident or encountered increased traffic.

Furthermore, although Ivymount Terrace is part of Willerburn Acres, Ivymount and Mary Cassatt are not connected to the other busier roads of Willerburn Acres. Ivymount and Mary Cassatt are essentially streets with no cross streets and both end in a cul-de-sac. The traffic that comes into Ivymount and Mary Cassatt must exit through those streets.

For these reasons I believe the county's resources would be better spent on county streets that have heavier traffic and most likely more safety issues.

Thank you for your attention to this matter.

Susan Abraham  
7810 Ivymount Terrace  
Potomac, Maryland 20854  
301 299 2894

**From:** [Brooke Greenwald](#)  
**To:** [Main, Lori J.](#)  
**Subject:** Ivymount Terrace FORMAL TESTIMONY Sidewalk Plan  
**Date:** Tuesday, December 6, 2022 10:08:39 AM

---

**[EXTERNAL EMAIL]**

Dear Lori:

Please consider this email my FORMAL TESTIMONY STRONGLY AGAINST the sidewalk plan on Ivymount Terrace. Our street is NOT a thoroughfare nor is it a big walking street. It is a very quiet street with little to no traffic. What it does have, however, is a significant drainage and wind problem.

I oppose the sidewalk plan because after talking to an architect and two experts on the subject I learned several things:

- 1) removing the tree canopies will not only increase the speed of climate change in our area but it will also increase the risk of deterioration to our properties from bugs, mites, and other things.
- 2) these lots are NOT even. My house alone is crooked and the lot is not flat. I have already had three floods in 5 years and the only reason there have not been more is because the trees have stopped it, as has the drainage ditches. My last flood this past spring was at a cost of over 35,000 to repair and it came up through the pipes. The only reason it was not worse was because the trees protected it from literally eroding into my house.
- 3) This is creating a problem where there is literally no problem. There have been no accidents on my street. No problems on my street. No complaints on my street and no issues on my street. My street is, once again, not a major walking street, not a main road and not a thoroughfare.
- 4) It will impact the speed at which the climate changes here and the trees you will take down protect from wind damage. The wind blows from Seven Locks Road down our street and in storms the same happens with water and snow and ice. Removing it removes literally all protections for homeowners.
- 5) Changing the grass fronts to of the properties on this street to cement sidewalks when the entire street has very old pipes and drainage problems is a major liability issue for the county. (I have spoken with an attorney regarding this). As the drainage problems increase as a direct result of this work, the homeowners can sue the county for remediation of the issue. They can also sue the county if someone slips and falls due to excess water or ice or snow on the sidewalks. Residents are not required to clear them legally nor are they required to deal with upkeep. We have many older residents on this street and they are at significant risk from this. Again, the county is setting itself up for many lawsuits as a result of this.
- 6) The sidewalks will create additional drainage issues which the county will be liable for. As a result, there will be a constant need for upkeep, additional soil (quarterly according to experts) and more. As the drainage impacts houses and other properties, it will become more and more of an issue. The water will run down the hill and will likely damage houses themselves. Again, this opens the county up to major lawsuits from this and the homeowners to major renovations they might not need.

The solution is simple...based on all of this -- cancel the plan for Ivymount Terrace to put in the sidewalks. We don't want them. We don't need them. We didn't ask for them and they

aren't good for anyone. From property damage to lawsuits this is not good for anyone.

And if this isn't enough -- please consider why homeowners have bought here:  
I bought in this neighborhood because there were no sidewalks on this street. I bought here because it was quiet. I bought here because it had a balanced look. By doing sidewalks on one side of the street you are changing the entire look of the street and the properties.

Brooke Greenwald  
7812 Ivymount Terrace  
Potomac, MD 20854

--

**Brooke Greenwald** President, Cornerstone Communications, LTD

---

**Your Message...Your Voice.**

Email: [brooke@cornerstonepr.net](mailto:brooke@cornerstonepr.net)

Website: [www.cornerstonepr.net](http://www.cornerstonepr.net)

**Office:** 240-360-0866

**Book A Meeting:** [calendly.com/brooke-45](http://calendly.com/brooke-45)

**Fax:** 301-637-3535



**From:** [Karen Rabin](#)  
**To:** [Main, Lori J.](#)  
**Subject:** Ivymount sidewalk  
**Date:** Saturday, December 10, 2022 9:08:48 PM

---

**[EXTERNAL EMAIL]**

Dear Lori Main,

This is my formal testimony opposing the sidewalk project proposed on my street within our section of Willerburn Acres.

I am opposed to this sidewalk proposal on several grounds:

- This is not a through street and it sees little traffic primarily only of the residents who live on this street.
- Traffic and pedestrian safety is not a problem whereas having icy sidewalks is a hazard.
- When we purchased in this neighborhood, there was no expectation to provide costly snow removal. It is costly both financially for those of us already of senior age or nearly senior age, as well as physically. I expect there will be injuries both to the homeowners and to pedestrians. Potential liability is costly. I did not “sign up” for this when this home was purchased many years ago. It is wrong to assume that an elderly resident on a possibly fixed income can just easily hire someone for sidewalk shoveling and maintenance on demand. Melting snow also refreezes, again leading to injury. Of note, you have chosen the “cold side” of the street that sees less warmth at the end of our driveways.
- When the snow plows come through, they pile the snow onto our property. Potentially, this will pile mounds of snow onto the sidewalks. (which also melts and refreezes)
- I am concerned about drainage. These current landscaping is not compatible with the “hill” on my front lawn to add a sidewalk. This will impact drainage.
- I have already had one very costly flood to my home. The drainage will most certainly impact my neighbors on the hill and at the bottom, adding flood risk to their properties.
- This seems like a poorly thought-out project designed without consulting the residents. (and possibly landscape engineers). Similar to the pedestrian center divider at Seven Locks and Ivymount, which has seen several accidents and significant non-accident damage to cars( I know of 2 neighbors who had \$4000 and \$10,000 in damage), forcing drivers to swerve to turn left into the breakdown lane, the sidewalks too, will lead to problems that have not been anticipated.
- The planned cement is not aesthetically compatible with the majority of driveways(asphalt) and overall, adding cement/concrete removes significant greenspace but with without adding safety.

Thank you,

Karen Rabin  
7814 Ivymount Terrace  
Potomac  
[karenrabin@gmail.com](mailto:karenrabin@gmail.com)





**From:** [Miller Family](#)  
**To:** [Main, Lori J.](#)  
**Subject:** Response to the Willerburn Acres Community Sidewalk Proposal  
**Date:** Thursday, December 15, 2022 5:00:22 PM

---

**[EXTERNAL EMAIL]**

**Response to the Willerburn Acres Community Sidewalk Proposal**

We are writing to express our opinion about the proposed installation of sidewalks on our street – Ivymount Terrace in Potomac. We feel a survey should have been done to gather residents' opinions about this new development in our neighborhood in advance of this notification.

We disagree with the proposal of a sidewalk on our street. As it is we have a tremendous problem with cars parking along the road as then there is not comfortable room for passing or for residents to back their cars out of their driveways without coming in close contact with the parked cars. Consideration must be given to Seniors who live on the street, as well, and for whom backing out of their driveways can be challenging, particularly those driving cars without the rear backup cameras. With the addition of a sidewalk, there will be an even worse problem with the parking along the road.

Widening the street will allow for easier passage of vehicles when a car, SUV, delivery truck or workers' truck is parked along the side of the road. Eastern Ivymount Terrace tends to be a turnaround street for school buses dropping off kids at the Ivymount School on Seven Locks. Inevitably there is a problem for them to pass when cars are parked on the street itself.

The east side of Ivymount Terrace is too narrow. It is 23' wide whereas the current standard for residential streets is 28'. Widening the road will also make it safer for pedestrians. In addition, the road pavement is broken up with dips and cracks that need paving.

The removal of mature trees and other landscaping in order to install the proposed sidewalk, is environmentally and ecologically unacceptable!

In conclusion, we feel tax payer money is better spent on improving the condition of the road itself through widening it and paving it rather than on the installation of a sidewalk.

Jeffrey & Sara Miller  
7815 Ivymount Terrace  
Potomac, MD 20854

**From:** [Lawrence Green](#)  
**To:** [Main, Lori J.](#)  
**Subject:** letter of opposition to sidewalk on Mary Cassatt (part of Willerburn Acres)  
**Date:** Sunday, January 22, 2023 4:53:42 PM

---

**[EXTERNAL EMAIL]**

Dear Lori Main:

This is my FORMAL TESTIMONY opposing the sidewalk proposed on Mary Cassatt Dr within our section of Willerburn Acres.

I am opposed to a sidewalk on Mary Cassatt because:

-Mary Casatt is a small closed loop street (with Ivymount) that does not have many homes/residents *and therefore has never been nor will ever be a street for public use.*

-There has never been any pedestrian injuries on Mary Cassatt-so adding a sidewalk will NOT increase public safety (data from looking at adding sidewalks in other neighborhoods is NOT applicable) in this small closed loop street with only a few dozen homes

-Because Mary Cassatt has *no curbs*, having a grass patch for a few feet and then adding the sidewalk inside of that will encourage visitors to park on the grass near the sidewalk (This happens on other streets without curbs and with sidewalks.) Invariably, this will lead to divots in the grass and mud and destruction of land in the area next to the sidewalk. (As an aside, I imagine when it snows, the county plows will also destroy this grassy area (because there is no curb) and plow close to the sidewalk

-Because of being placed adjacent to our street drainage piping, the sidewalks will constantly be muddy, unsafe, and most likely not used

-Some of the street's most beautiful assets will be destroyed-such as the 150+ year old oak tree in my neighbor's yard.

Sincerely,  
Lawrence Green  
7820 Mary Cassatt Dr  
Potomac, MD 20854  
[drgreen@aederm.com](mailto:drgreen@aederm.com)



**Lawrence J. Green, M.D. FAAD**

Clinical Professor of Dermatology

George Washington University School of Medicine

*Diplomate, American Board of Dermatology*

Member, Board of Directors, American Academy of Dermatology

Past President, Montgomery County Medical Society

9601 Blackwell Rd., Suite 260 • Rockville, Md 20850  
Ph: (301) 610-0663 • Fx: (301) 610-5420  
[AestheticDermatologyMD.com](http://AestheticDermatologyMD.com) • [drgreen@AEDerm.com](mailto:drgreen@AEDerm.com)

**From:** [Deborah Wassertzug](#)  
**To:** [Main, Lori J.](#); [Friedson's Office, Councilmember](#); [Albornoz's Office, Councilmember](#); [Jawando's Office, Councilmember](#); [Glass's Office, Councilmember](#); [Sayles's Office, Councilmember](#)  
**Subject:** Willerburn Acres sidewalk proposal  
**Date:** Monday, January 23, 2023 9:16:52 PM

---

**[EXTERNAL EMAIL]**

Dear Ms. Main and Councilmembers Friedson, Albornoz, Jawando, Glass, and Sayles,

I am writing as a resident of Ivymount Terrace, which stands to be affected by the sidewalk project proposed for Willerburn Acres.

My family moved to Ivymount Terrace over four years ago from Brooklyn, New York. While we miss the city, the tranquility of our new home is something we appreciate. In the early morning we enjoy seeing deer and foxes crossing the road. There are no cars zipping by our house. This is not an unsafe environment for pedestrians. We have no idea why a proposal to pave sidewalks onto our lawns has been made, but the sheer number of trees that would need to be destroyed in the process, in turn destroying wildlife habitats, make plain the fact that this proposal does not have the makings of an improvement to our neighborhood.

We live just three houses in from Seven Locks Road. Could we please shift our attention -- and funds -- to mitigating traffic on *that* road, and make it a higher priority than felling trees? On the corner of Ivymount Terrace there is a crosswalk at Seven Locks which appeared seemingly overnight and with no consultation from nearby residents. The location of the crosswalk makes turns into Seven Locks very awkward for motorists, but more importantly, without any sort of red signal, it can take a few minutes, and a pedestrian having to basically launch themselves into the road, in order for a motorist to decide to stop and honor the right of way. It would be nice for pedestrian crossings to be made safer along Seven Locks *before* a fatality takes place, not after, as occurred on Tuckerman Lane.

Furthermore, and further down Seven Locks, I am distressed that any funding is being considered for this unnecessary project *before* the county makes restitution to the Scotland community for racist development policies of the past that have resulted, among other things, in the Scotland AME Zion church nearly falling apart due to its being relocated to a flood prone area. Additionally, there are no sidewalks connecting the Scotland community to our neighborhood retail. On a daily basis I see pedestrians forced to walk on the shoulder of a very busy road. I fear it is only a matter of time before tragedy strikes there as well.

Many thanks for your attention,

Deborah Wassertzug  
7821 Ivymount Terrace  
Potomac MD 20854  
[wasserd@gmail.com](mailto:wasserd@gmail.com)  
646-753-2698

**From:** [Paolo Raponi](#)  
**To:** [Main, Lori J.](#)  
**Cc:** [jilltender@gmail.com](mailto:jilltender@gmail.com); [niraberry@gmail.com](mailto:niraberry@gmail.com)  
**Subject:** Testimony - Paolo Raponi - 11518 Gauguin Lane, Potomac (MD)  
**Date:** Monday, December 5, 2022 2:59:13 PM

---

**[EXTERNAL EMAIL]**

Dear Lori Main,

this is my formal testimony opposing the sidewalk project proposed on my street within our section of Willerburn Acres.

I am opposed to the sidewalk proposal because:

- 1) This is creating a problem where there is no problem.
- 2) My street is not a through street. We have very minimal traffic - sidewalks are unnecessary.
- 3) This will eliminate approximately 83 mature trees as well as bushes, landscaping, and animal habitats in our neighborhood, one of the most valued assets in the community's ecosystem throughout Willerburn Acres. Over 30 will require air excavation for roots near future sidewalks.
- 4) I bought in this neighborhood because I love the look and country feel - cement sidewalks will take away the natural aesthetic and create an unbalanced look on the street, with a substantial portion of the impacted driveways will be cement - where 98% now are black asphalt.
- 5) Changing the grass front lawns to partial cement areas can cause additional drainage problems - we have heavy drainage running down the hill already during rain.

Thank you

Paolo Raponi

11518 Gauguin Lane  
Potomac (MD) 20854  
[praponi2002@yahoo.com](mailto:praponi2002@yahoo.com)



**From:** [Amy Ngan](#)  
**To:** [Main, Lori J.](#)  
**Subject:** Willerburn Acres Community Sidewalk - 11743 Gainsborough Road Written Testimony  
**Date:** Friday, January 6, 2023 4:45:48 PM

---

## [EXTERNAL EMAIL]

Hi Ms. Main,

Happy New Year! Hope you and your family had a nice holiday.

We are the owners (Amy Ngan & Chung (Ken) Lin) of 11743 Gainsborough Road and our house will be one of the houses that will be impacted with the Willerburn Acres Sidewalk project. **Below** is our written testimony **Against** the sidewalk proposal on Gainsborough Road.

We **Do Not** support the sidewalk project for the following 2 reasons:

### **1. Loss of Driveway Parking**

With the removal of my driveway apron, my household with 4 vehicles will be forced to permanently park one vehicle on the street making Gainsborough Road a one way street. Many of our neighbors and their guests are parking on the lawn to avoid blocking on this narrow street, especially larger vehicles, such as Fire Trucks, School bus, Trash, recycle and delivery trucks. All these large vehicles will have to carefully maneuver on this narrow street when a car is fully parked on the street and not on the lawn.

Currently, without any parked cars on Gainsborough, it is allowing 2 regular size cars to slowly pass by each other. If there is one large vehicle, sometimes the smaller vehicle will have to drive over partially on the lawn to get through. Once the sidewalk is in place, the vehicle will be forced to drive all over our neighbors' lawn to get around the bigger vehicles like trash and recycling trucks. I'm sure our neighbors will not be happy about that.

### **2. Flooding issues**

Our driveway is sloped into our garage and we've had flooding issues during heavy rains. We recently repaved our driveway and built an extra drain near the brick wall to redirect water away from our garage and our house. If a sidewalk is built, none of this water will be absorbed and drained by nature. Our newly repaved concrete driveway will be shortened and our newly installed drainage system will be ineffective with the elevated sidewalk directing water straight into the driveway and subsequently flooding our garage whenever it rains. We love our house and invested time and effort to build an infrastructure to protect our house and prevent flooding issues in our house.

## **Sidewalk Alternatives**

Instead of building a sidewalk, alternatives that would increase pedestrian safety should be lower speed limits, add speed bumps, more street lights closer in distance so walkers can be visible in the

evenings. We shall work together as a community to share Gainsborough Road by adding more street lights and speed bumps for the safety of both drivers and pedestrians.

Thank you

Chung Ken Lin and Amy Ngan

11743 Gainsborough Road

301-693-7630

**From:** [Nancy Hamburger](#)  
**To:** [Main, Lori J.](#)  
**Subject:** Willerburn Acres Sidewalk  
**Date:** Wednesday, November 30, 2022 1:45:19 PM

---

**[EXTERNAL EMAIL]**

Dear Lori,

We live at 11765 Gainsborough Rd, Potomac, MD 20854 and are slated for the proposed sidewalk. We are not in favor of this project as it will change the look and tenor of this street by removing many trees and other green spaces. We built our home in 2004 on this street in particular because it felt like we were out in the country but still close in.

If there are studies to show why our street requires sidewalks, we would appreciate seeing them.

The information sent indicated that we will have significant damage to our landscaping and hardscaping. Is there someone who can come out to our property to explain exactly what will be removed? If this project goes ahead, despite our and others' vigorous disapproval, we want to understand exactly what we as homeowners and taxpayers can expect to see when it is completed.

Thank you for your attention to this matter.

Sincerely,  
Nancy Frumkin and Paul Hamburger

--

Nancy Hamburger  
11765 Gainsborough Road  
Potomac, MD 20854

301-237-3886

**From:** [Michael Hurwitz](#)  
**To:** [Main, Lori J.](#)  
**Cc:** [Zahava Hurwitz](#)  
**Subject:** Willerburn Acres Community Sidewalk Proposal -- Testimony of 11821 Gainsborough Rd  
**Date:** Tuesday, December 20, 2022 11:10:35 PM

---

**[EXTERNAL EMAIL]**

Department of Transportation  
Division of Transportation & Engineering  
Sidewalk Program  
Via [Lori.Main@montgomerycountymd.gov](mailto:Lori.Main@montgomerycountymd.gov)

Dear Ms. Main:

We are the owners and residents of 11821 Gainsborough Road, which would be impacted by the Willerburn Acres Community Sidewalk Proposal. We are writing to express our opposition to the construction of the sidewalk on Gainsborough Road from Seven Locks to Fontaine Street because of concern about multiple negative impacts to our property and our neighborhood. While the sidewalk proposal is well-intentioned, there are several much more cost-effective ways to increase pedestrian safety without harming the neighborhood or the environment.

**Impacts to 11821 Gainsborough Road**

Our residence on Gainsborough Road is one of the only homes in Willerburn Acres with a front elevation below street level - the driveway has a steep grade (more than 8%). The property is also located at the bottom of two hills along Gainsborough Road, which results in more significant amounts of rainwater and runoff from the street moving toward our property than other properties on the street. Two important systems that mitigate the risk of surface runoff to our property would be compromised and undermined by the proposed sidewalk:

1.  
Our driveway apron is installed at 2.7% grade toward the street, which helps ensure that water from the street does not leave the street and redirect down our driveway. The proposed sidewalk and replacement apron would be installed at a 2% grade. While that grade may be sufficient to redirect water in other areas of the neighborhood, such a modification would be too great a risk for our property where water from rainfall and melting snow and ice quickly collects.
2.  
The grass on our front lawn, especially in the large flat plane at the top, absorbs a substantial amount of overland surface runoff and slows water before it reaches our house. This is critical because of the steep decline between the street and our front

entrance. Introducing approximately 300 square feet of impervious ground surface would reduce absorption of rainfall on our property and increase the volume of overland downhill runoff. During heavy storms, the curb in front of our property barely keeps the rainwater on the street and directed toward the large storm drain.

Dumping a much greater volume of water from a sidewalk into the street (including by the entrance to the forest) could overwhelm that storm drain and flood the surrounding areas.

We are also opposed to the proposed location of the sidewalk on our property, which would require the destruction of a Red Maple planted in the right of way at a location the County designated when approving the plans for construction of our home. This young, vibrant, healthy tree adds to the beauty of the neighborhood and our property and should not be removed. A narrower sidewalk or a location closer to the street would enable this tree to be preserved. We are also concerned that the sidewalk would impact buried power, cable, and gas lines (we are one of the few houses with all utilities buried) and our mailbox.

Finally, maintaining the sidewalk free of ice could prove challenging, since there likely will be significant pooling of water on the new impervious surface (for the reasons described above) that will freeze. Keeping this surface clear of ice likely will require not only significant maintenance but also ice melting salt that will then eventually move to the storm drain. This is not an environmentally friendly prospect by any means.

To the extent the sidewalk proposal moves forward, as discussed with Mr. Juan Berrios during a site visit on 12/14/22, we propose the following modifications for our property:

- A sidewalk that preserves the location of our existing red maple and mail box, which likely would mean a sidewalk without a 3-foot grass border to the curb
- Any modifications to the curb to ensure it can withstand additional water runoff, particularly when significant ice forms on the sidewalk
- Preserving the width and 2.7% slope of our driveway apron
- Removal of the large sycamore tree near the forest that is currently leaning in the direction of the street; any sidewalk built near this tree likely would compromise this tree presenting a danger to passersby and cars that often park in front of it.
- Reinforcing the storm drain near the forest entrance to ensure that it can handle additional water runoff
-

Careful attention to not disturb buried utility lines that connect to our house

### **Impacts on our neighborhood**

We have lived in Willerburn Acres for over 10 years and previously owned property on Greenleaf Avenue. We are raising children in the neighborhood, we walk our dog and use the ride-on bus stop and we share the concerns of many of our neighbors about the scope and scale of negative impacts across Willerburn Acres.

First, the proposed excavation of the sidewalk at 8 feet from the street would decimate many healthy, mature trees planted and maintained at the cost of property owners. It would also destroy other investments made by neighbors to beautify the neighborhood with shade and flowering landscaping. As planned, the project will undermine the beauty and appeal of our neighborhood.

Second, the scope of the project is simply too big with too many homes and streets impacted. Instead we support establishing a limited sidewalk from the Seven Locks Ride-on stop at Goya Drive to the corner of Goya and Greenleaf. This segment would be a smaller and less disruptive investment with fewer impacts on homeowners that would substantially improve safety at the entry point of the neighborhood where vehicle traffic is consistently the heaviest. This segment would have the greatest benefit to students congregating at large central point bus stops and pedestrians entering the neighborhood. Beyond that corner where pedestrians disperse, the benefits immediately dissipate and are far outweighed by the cost.

Finally, there are many more cost effective ways to improve pedestrian safety in the neighborhood. Installing speed bumps at each end of the large curve at the bottom of Gainsborough Rd would be immediately beneficial, as would installing mirrors near the forest. Improving the street lighting would promote greater visibility, particularly near our home where the current street light isn't particularly bright.

Thank you for your attention to our comments.

Sincerely,

Zahava and Michael Hurwitz



**From:** [Mitchel Malkus](#)  
**To:** [Main, Lori J.](#)  
**Cc:** [Caryn Malkus](#)  
**Subject:** Proposed Sidewalk Construction - Willerbrun Acres Community  
**Date:** Sunday, January 15, 2023 12:22:19 PM

---

**[EXTERNAL EMAIL]**

Dear Ms. Main,

We are writing to express our strong opposition to the proposed sidewalk construction project.

We are unaware of any field studies that have been conducted in our neighborhood that indicate there is a need for sidewalks. If there is a study, we would ask to see that study(ies) and that it (they) be distributed to all residents. Additionally, there is very little traffic in the neighborhood. This is the case because it is not a thoroughway to any other areas. If one drives into the neighborhood, it is essentially to get to your home or to visit a home. The proposed project and its massive impact is not warranted in our neighborhood for these reasons.

We also are opposed to the sidewalk construction because of the significant economic and environmental costs of the project. Our neighborhood was not planned for sidewalks and the proposed project will require the removal of well over 150 mature trees and significant amounts of green grass. While the trees will be replaced, the impact of the removal of mature trees will have a significant environmental cost and will not be mitigated against for years. Economically, the cost of this project has not been weighed against other options, if in fact the County has any studies that indicate there is a safety issue (which we do not believe is the case). Putting in speed bumps and lights would be a much better use of taxpayer dollars at a significantly lower price tag if there were in fact a safety need.

Our neighborhood was designed as a pastoral neighborhood. The construction would destroy the design of the neighborhood.

Last, our anecdotal assessment shows that the vast majority of the neighborhood residents oppose the study, particularly those on the side of the street where the project will take place. We anticipate petitions and testimony will show this is the case. For this and all the above reasons, we ask that the County reconsider this unresearched and ill conceived plan for our neighborhood.

Sincerely,

Caryn and Mitchel Malkus  
11825 Gainsborough Rd.  
Potomac, MD. 20854

I am opposed to the proposed installation of sidewalks in Willerburn Acres for the following reasons:

1. This is a self-contained neighborhood accessible only through Seven Locks Rd, with no through traffic to any other place. Vehicular traffic is therefore largely limited to residents of our widely spaced houses, along with visitors and delivery trucks. The low density of the neighborhood also produces low foot traffic. I walk frequently, sometimes with my little grandkids, and have not had any safety concerns.
2. The removal of 82 ornamental and shade trees along with uncounted mature shrubs and other plantings would degrade the character and aesthetics of this small neighborhood. Many current residents were attracted to this neighborhood by the abundance of greenery, including me. Furthermore, our neighborhood is adjacent to 270 and mature trees and greenery help buffer the noise and improve air quality. While we are told that at least some of these mature trees will be replaced by young trees, the shrubs, other plantings and curbside stonework will be destroyed without replacement or compensation. The information provided says the new trees will be replaced "into the County's public right of way", but this space will be occupied by the sidewalk, so will those replacement trees be put elsewhere on the owners' property? The county removed a tree from my property 4.5 years ago and has yet to remove the stump and provide a replacement tree as promised. What is the timeline for replacement trees for this sidewalk project and the restrictions on where the replacements can be planted?
3. Homeowners with the new sidewalks would be faced with new expenses related to required snow removal and liabilities due to pedestrian accidents which may necessitate increased insurance costs. The suggestion that we could get local high schoolers to shovel snow and ice at no charge lacks seriousness. Also, given the very poor upkeep of our neighborhood streets, we have little confidence in upkeep of these sidewalks.
4. Wide sidewalks will reduce permeable surface area which will increase runoff into sewers, and such runoff will include additional salt and other chemical pollutants used to keep surfaces ice free. Such runoff is the fastest growing source of pollution of the Chesapeake.
5. Will homeowners have any say in the width of the grassy strip between the sidewalk and street? Some owners have smaller front yards and I hope some effort will be made to mitigate the impact on them.
6. Were studies done to specifically assess the needs or effects of sidewalks on Willerburn, as neighborhoods differ in their needs and character. What studies show that sidewalks increase property values? Will our assessments be increased to pay for this very expensive project? How will this be paid for?
7. This project was initiated by a petition from a non-profit called ASIRT and was apparently signed by some Willerburn residents as well as many people who actually live outside the community. Is this petition publicly available?

In summary, this plan would produce small safety advantages to Willerburn residents at the expense of many adverse and expensive consequences.

Safety is an important issue to all of us, but the installation of wide sidewalks throughout most of the neighborhood, especially given the low pedestrian and vehicular traffic seems like overkill. Safety concerns for this neighborhood could likely be addressed by less drastic measures including increased lighting, speed bumps and sidewalks restricted to problematic places such as the Gainsborough Rd curve at 11800.

**Christine Kozak**  
**11837 Gainsborough Rd.**

**From:** [Steve Klein](#)  
**To:** [Main, Lori J.](#)  
**Cc:** [Sally Moody](#)  
**Subject:** No Sidewalks in Willerburn Acres  
**Date:** Saturday, December 3, 2022 2:48:09 PM  
**Attachments:** [Dear Sidewalk Program.docx](#)

---

**[EXTERNAL EMAIL]**

Dear Division of Transportation Engineering (Lori),

We are writing to object to the proposed sidewalks in our neighborhood. The wide, wooded roads attracted us to this oasis in 1991 as a young family. These features keep us here today as retirees. Paving the lawns now is unnecessary, harmful to the environment and contrary to global trends favoring people over automobiles.

We prefer the neighborhood without sidewalks. We raised our children here. They confirm that they also prefer the neighborhood without sidewalks. We regularly walk on the roads and feel completely safe. These are our local neighborhood roads; they are not through streets. The only people who drive here are the people who live here. When I walk on the roads, I know the drivers; when I drive on the roads, I know the walkers and give them the right-of-way.

Sidewalks are unnecessary here because the streets have little traffic and are so wide. For example, Goya Drive was originally designed as an entrance ramp to I-270. It is 33ft across, 5ft more than the standard for new roads. So, it's already wide enough to accommodate both cars (28 ft) and people (5ft). Even if there were sidewalks here, no one would use them. We would still walk in the road, and the kids would still play in the road. Consequently, it would be wasteful to install them.

Additionally, it would be irresponsible to pave over 60,000 square feet of earth (2.3 miles long x 5 ft wide), to remove hundreds of bushes and over 80 mature trees. The earth and plants are necessary for a healthy environment. They soak up rain water, provide shade and produce oxygen for the neighborhood and for the county. Sidewalks increase the runoff of harmful chemicals into the Cabin John Stream, which runs along the east side of our neighborhood, into the Potomac River and then into the Chesapeake Bay. Sidewalks increase water pollution and accelerate climate change, one of the biggest problems facing our planet today. In fact, many municipalities now tax property owners for paving their property because it prevents proper drainage and increases runoff into the sewer system. This is not the time for municipalities to pave the earth and create more problems. This is the time to reduce pollution and climate change.

Finally, sidewalks are part of an antiquated philosophy that penalized pedestrians and neighborhoods. Today, the national trend is to strengthen the position of pedestrians as equally important road-users. 'Freedom to Walk' laws have been enacted in Virginia, Missouri, Nevada and California. Soon, they will be country-wide. These laws are designed to prevent motorists from assuming that they own the roads. These national trends emphasize that our neighborhood does not need sidewalks.

We would not use the sidewalks. They would damage the air, land and water. Sidewalks are an old-fashioned solution that has come and gone. Earth, grass and trees are beautiful;

concrete is ugly and increases global warming. Our recent realization that we need to protect our natural environment shows that this it is not the time to pave it. Please don't waste the county's limited resources on this unnecessary, and harmful project. Instead, use those resources to help our many residents who need your help.

Sincerely,  
Steve Klein & Sally Moody  
11901 Goya Dr.  
Potomac, DM 20854  
240 888 4244

**From:** [Deborah Wilbur](#)  
**To:** [DTE SIDEWALK](#); [Gonzales, Robert](#); [Holley, Geary](#); [Berrios, Juan A.](#); [Main, Lori J.](#)  
**Subject:** Willerburn Acres Sidewalk Proposal  
**Date:** Wednesday, January 25, 2023 12:23:54 PM

---

**[EXTERNAL EMAIL]**

We are writing regarding the proposed sidewalk project in Willerburn Acres of Potomac. As a resident of Willerburn Acres, I am STRONGLY AGAINST against building sidewalks here. This is not at all a high traffic neighborhood. We walk a lot in the neighborhood, both during the day and at night, and many times don't even see moving cars. There have been no car accidents involving pedestrians since we moved here 25+ years ago, nor even any near misses as far as we know. Some additional pedestrian safety could be much more easily accomplished by good lighting on some of the streets where the sidewalks are proposed, with the added benefit of not needing to remove the many, many beautiful mature trees in the neighborhood and completely changing the aesthetic of the neighborhood, one of the reasons we moved here originally. We hope you will reconsider this unnecessary and tree-harming project.

Sincerely,  
Deborah and Josh Wilbur  
11902 Whistler Ct.  
Potomac, MD 20854

**Joseph H. Autry, III, M.D.**  
**11913 Gainsborough Road**  
**Potomac, Maryland 20854-3306**

Department of Transportation  
Montgomery County Maryland  
100 Edison Park Drive  
4<sup>th</sup> Floor  
Gaithersburg, Maryland 20878

29 December 2022

Attn: Lori.Main @montgomery countymd.gov

Re: Willerburn Acres Community Sidewalk Proposal

Let me start by saying that I oppose the above referenced proposal to install sidewalks in the Willerburn Acres Community.

I find the proposal that you sent for review and comment to be long on details and short on information to justify installing sidewalks that would degrade the nature and ambiance of the community that so many residents enjoy. I have lived in this community since 1984 after careful consideration of many other communities in Montgomery County. I have not regretted my choice.

Among the many unanswered questions raised by your proposal are:

- what residents/taxpayers, entity or institution requested the installation of sidewalks.
- what studies were performed to assess the amount of vehicular traffic in the community.
- what studies were performed to assess the amount of pedestrian traffic in the community.
- what data was reviewed to assess the number of vehicle/vehicle accidents in the community.
- what data was reviewed to assess the number of vehicle/pedestrian accidents in the community.
- what surveys were conducted among the community residents to assess their view on the justification and desirability of this proposal (asking for comments on a developed proposal does not fully address these concerns, nor are a significant number of residents potentially going to respond to such a request)?

You note that the major goal for the Sidewalk Program is to provide safer access for the disabled and to improve pedestrian access to schools and nearby public transportation or public facilities. Yet you offer no data to show that such problems exist under the current circumstances.

You also note that MCDOT staff conducted a field investigation, confirming that landscape conditions within Willerburn Acres are favorable to sidewalk installation. You do not offer any evidence that MCDOT staff did any field investigation of the of the cultural and social considerations of the community that make this community such a desirable place to live.

While I await your response to the questions and issues raised above, I would like to share my perspective on the nature and ambiance of the community and to share some facts that are not addressed by your proposal.

First and foremost the current absence of sidewalks is a major part of the charm about living here. The most common pedestrian traffic are residents walking their dogs and walking the area for exercise because of the low traffic volume and the feeling of being in a semi-rural area. The most common form of vehicular traffic is residents going to work in the morning and returning home at night. Even this traffic has been reduced significantly due to more residents working from home. There is little to no through traffic since the streets do not lead to a major commercial area, school or high density developed area. Transportation to schools that service the neighborhood is provided by school buses so there are few to no students who walk to schools. Nor is there a direct path to a major thoroughfare. There are long stretches of time during the day in which there is no vehicular traffic or when you are more likely to see a delivery or lawn service truck than a car/SUV on the roads.

The only exception to this description is pedestrian and vehicular traffic on the Jewish Sabbath and Jewish holidays. On these days large numbers of my Jewish neighbors walk in the street to and from Synagogue. On these days, vehicular traffic is non-significant to virtually non-existent since many of the vehicles in the neighborhood are not driven because of religious beliefs. In other words, the usual drivers of these vehicles are now pedestrians themselves. Those very few people who do drive on these days are exceedingly respectful and careful of their neighbors.

On the issue of safer access for the disabled and the improvement of pedestrian access to schools and nearby public transportation or public facilities, on many occasions I have walked the three blocks from my residence to Seven Locks Road where public transportation access, churches, synagogues, small religious based schools, and a school for people with disabilities are located. There are usually only one or two cars parked on the road and I frequently do not encounter any vehicular traffic within the community. For those of us who are disabled or have disabled family members there are no impediments and little to no danger to walking or using assisted/adaptive technologies in the road to such amenities.

Lastly, let me turn to the issue of where sidewalks do exist in the surrounding neighborhoods. There are very few sidewalks that are 5 feet wide, and these are located around shopping centers or in shopping centers and the development of Park Potomac. Even these are not consistent in width and there are major streets with no sidewalks e.g., parts of Seven Locks Road and Tuckerman Road. These streets also lead to an assisted living facility, located at Seven Locks and Tuckerman. Both Seven Locks and Tuckerman are busy commuter roads and lead to major shopping centers such as Cabin John Park Potomac, and Potomac Woods Plaza shopping centers. They are also major routes for buses leading to



Metro transfer centers and the afore mentioned shopping centers. They also have bus stops and other amenities located on these routes.

I also note that there are many neighborhood streets located around Beverly Farms Elementary School, Hoover Junior High School and Winston Churchill High School that do not have sidewalks even though many students walk to these schools from the surrounding areas. These streets include: Smoketree, Devil Wood, Henry Fleet, Enid, Little Creek, Wilksboro and Miburn around Beverly Farms Elementary School and Bunnell, Tuckerman, Long Pine, Georgetown, Regency, Enid, Deborah, Charen and Smoketree around Hoover and Churchill.

These areas seem to fit the definition of the major goal for the Sidewalk Program: to provide safer access for the disabled and to improve pedestrian access to schools and nearby public transportation or public facilities. The streets in Willerburn Acres do not meet this definition.

In closing, the fact that this proposal was developed as fully as it is raises suspicions that it represents an example of cronyism, or a lack of interest in what the residents of Willerburn Acres feel about the need for sidewalks or their interest in having the nature and charm of the neighborhood significantly changed by the proposal. If you had such an interest, you would have surveyed the neighborhood before developing the proposal.

Sincerely.

Joseph H. Autry, III, M.D.

Cc: Marc Elrich. County Executive

Willerburn Acres Community Sidewalk Proposal

Opposition Comments filed by Joel Rabinovitz and Francine Strauss

We write to oppose the installation of sidewalks as proposed in MCDOT's Willerburn Acres Community Sidewalk Proposal. Unlike many of the people who signed the petition asking for sidewalks, we live in the neighborhood and would be directly impacted by the proposal; indeed, we will lose a 30+ year old tree.

Opposition to the installation of sidewalks

Our reasons are several:

- 1) We believe sidewalks are unnecessary.
  - a. Walking in the neighborhood is not dangerous. There is little foot traffic on weekdays and little vehicle traffic on weekends, and on Saturday in particular, when most people in the neighborhood walk.
  - b. The neighborhood is not a "through neighborhood" – no one from outside the neighborhood walks through the neighborhood (and thus would be using the sidewalks) to reach any location on the other side of the neighborhood or, indeed, any location within the neighborhood other than a house. There are no community centers, etc. within the neighborhood. The churches and synagogues are all at the edge of the neighborhood on Seven Locks Road and anyone outside the neighborhood can already reach them by sidewalk.
- 2) Installing sidewalks will destroy tens of old growth trees. This will:
  - a. significantly impact the beauty of the neighborhood;
  - b. have local heat effects – as there will be fewer trees for cooling, and the additional concrete will radiate the heat;
  - c. make it less appealing to walk through the neighborhood; and
  - d. possibly reduce property values for people whose trees are destroyed; and
  - e. also force any homeowners who wish to relocate the trees or plant older ones rather than relying on the saplings that will be provided by the county to incur significant costs.
- 3) The destruction of old growth trees will also:
  - a. negatively impact global warming. According to the federal government, trees can "remove ambient CO from the atmosphere, thus contributing to air quality and a stable climate, as well as helping to avoid potential human health problems associated with CO exposure." One mature tree absorbs more than 48 pounds of carbon dioxide each year. We understand that approximately 80 trees will be destroyed to install the sidewalks.
  - b. increase the runoff of nutrient-rich rainwater into the Chesapeake Bay, with all of the attendant harms.

- 4) The installation of sidewalks is needed more elsewhere. It makes no sense to be using scarce County time, resources, and funding to install sidewalks in a quiet residential neighborhood when they are needed more elsewhere, for example, on the East side of Seven Locks Road between Goya and Montrose Road, and on almost all of Falls Road south of Montrose Road, both of which are main thoroughfares and treacherous to walk along. The lack of sidewalks in those locations is a far greater danger to human life than the lack of sidewalks in our quiet neighborhood.

The neighborhood should decide.

While we understand that we are not the only people in the neighborhood opposed to the installation of sidewalks, we do not know how many people might be in favor. Because the people in the neighborhood are the only ones who will be impacted – both positively and negatively -- by the installation of the sidewalks (as we mentioned above, people from outside the neighborhood do not travel through it), we ask that the views of the majority of the neighborhood residents be the major consideration in your decision.

Use permeable material if MCDOT does install sidewalks.

One of the main objections to the installation of sidewalks is that it will require the destruction of almost 100 mature trees. One way to save many if not all of those trees would be to use a pervious flexible sidewalk paving material instead of concrete, which has been done in many other places. We understand that using such a material is more expensive, both to install and to maintain. But it does offer a compromise. Of course, the least expensive option, and the one we support, is not to install sidewalks at all.

Joel A. Rabinovitz  
Francine R. Strauss  
11917 Gainsborough Road

**From:** [Jared Kotler](#)  
**To:** [Main, Lori J.](#)  
**Subject:** RE: Willerburn Acres Community Sidewalk Proposal  
**Date:** Sunday, January 15, 2023 10:33:57 PM

---

**[EXTERNAL EMAIL]**

Mr. Robert Gonzalez and Ms Lori Main,

The attached is the written testimony for 12109 Greenleaf Avenue for the January 25th, Virtual Public Hearing for the Willerburn Community Sidewalk Proposal.

- **Position:** We are AGAINST the proposal to install sidewalks being proposed to be installed in Willerburn Acres.
- **Rationale:**
  - **Limited Safety Benefit:** The roads in our neighborhood don't cross any major streets and all have a 25 MPH speed limit. None of the streets act as through streets which limit the traffic to only the few houses that are located in our neighborhood. Walking on the street is not a risk for our community and we have done so for decades. If safety is a concern, speed bumps can solve this and would be less costly and would have a significantly smaller impact on the environment.
  - **Environmental Effect:** Your proposal will require a large amount of cement to be produced and installed in our neighborhood. While your proposal will have limited effect on pedestrian safety, it will create a negative effect on the environment. The cement industry is one of the biggest contributors to carbon emissions. In fact, concrete generates 4 - 8% of the world's CO2. In addition to concrete, the county would be cutting down numerous mature trees and replacing them with young trees. This is a problem for our environment as mature trees capture significantly more carbon than young trees.
  - **Importance of Private Property:** The houses in our neighborhood have invested significant amounts of money to make our neighborhood and houses beautiful and enjoyable to live in. Right of Way and Eminent Domain laws are important to allow governments to build infrastructure that is vital to communities. However, these laws should be used when the infrastructure is truly vital. Using these laws for projects that have limited or negative benefits puts these laws in jeopardy by making them less and less popular. This could make it harder for governments to use this power for important infrastructure in the future.
  - **Waste of Government Funds:** This project will waste important government funds for a project that is not needed. This money will be better spent on homeless shelters, soup kitchens or other necessary government projects that would help the citizens in our county who need the most help.
  - **Disruption to our Community:** The construction of sidewalks will disrupt traffic and normal operation of our community for a significant period of time.

Thank you.

Jared and Alanna Kotler  
12109 Greenleaf Avenue



**From:** [hschul9915@aol.com](mailto:hschul9915@aol.com)  
**To:** [Main, Lori J.](#)  
**Subject:** Willerburn Acres Community Sidewalk Proposal  
**Date:** Wednesday, December 14, 2022 9:08:13 AM

---

**[EXTERNAL EMAIL]**

Attention Lori Main:

For the record, the Schuler family of 12119 Greenleaf Ave in Potomac is vehemently against the proposal to install sidewalks in Willerburn Acres. This community has managed for some 52 years without them and we see no reason why they should be installed now. We believe it is a waste of our tax dollars, which would be much better spent improving schools; giving our teachers, firefighters and police a raise; and/or fighting food insecurity, violence and poverty in our county.

Here are just a few of the reasons we are against this proposal:

- 1) Because the neighborhood was originally supposed to access 270, many of the streets are extra wide, with plenty of room for both pedestrians and vehicles. Sidewalks have not ever seemed necessary to us and we would like to know why the county is considering them now. The reasons were not included in the proposal information, and we would like the chance to address them.
- 2) Many area residents walk in groups. Sidewalks do not provide room for groups, so they will still walk in the street. If this is a resident-requested reason for installing sidewalks, they will not work.
- 3) This proposal will leave affected homes approximately 8' less property (5' sidewalk and 3' variance) in front of their homes. Many of these homes have mature trees, plants, walks and/or landscaping that required considerable initial investment.
- 4) It will create the additional task of shoveling snow from these walks. This will cause a hardship for the senior residents and others incapable of shoveling. The idea of getting high school students to shovel for SSL credit is almost laughable. Students disappear when it snows.
- 5) It seems to us that installing sidewalks [AT A GRADE OF 2%] would create more runoff into our already overloaded drainage system and cause more pollution of our Chesapeake Bay. We believe that letting water soak into the ground to nurture our plants and grasses is much more economical and smarter for the ecological footprint that we will leave for our children.
- 6) There is no way to prevent young people from riding skateboards, bicycles, electric scooters, etc. on the sidewalks, which would impede pedestrians.
- 7) We are especially concerned about the death of 30- to 50-year-old trees. This is an enormous waste and violation of nature. We have three questions:
  - a. Can smaller trees such as dogwoods and crape myrtles be replanted?
  - b. If in fact mature trees are destroyed, will the wood be split and accessible as FREE firewood for residents?
  - c. Is the county really going to replace trees 3:1? Who is going to monitor this replanting? And how is this possible with 3' of land between sidewalk and street?

Please add this email to the set of community comments against this proposal. Thank you for your time and consideration.

The Schuler Family  
12119 Greenleaf Ave  
Potomac, Md 20854