

TUCKERMAN LANE SIDEWALK/BIKEWAY PROJECT – SEGMENT 1

VIRTUAL PUBLIC MEETING

MARCH 10, 2022





Introduction

Outline

- Project Overview
- Previous Meeting Highlights
- Preliminary Design
- Next Steps
- Questions / Comments



Meeting Outcomes

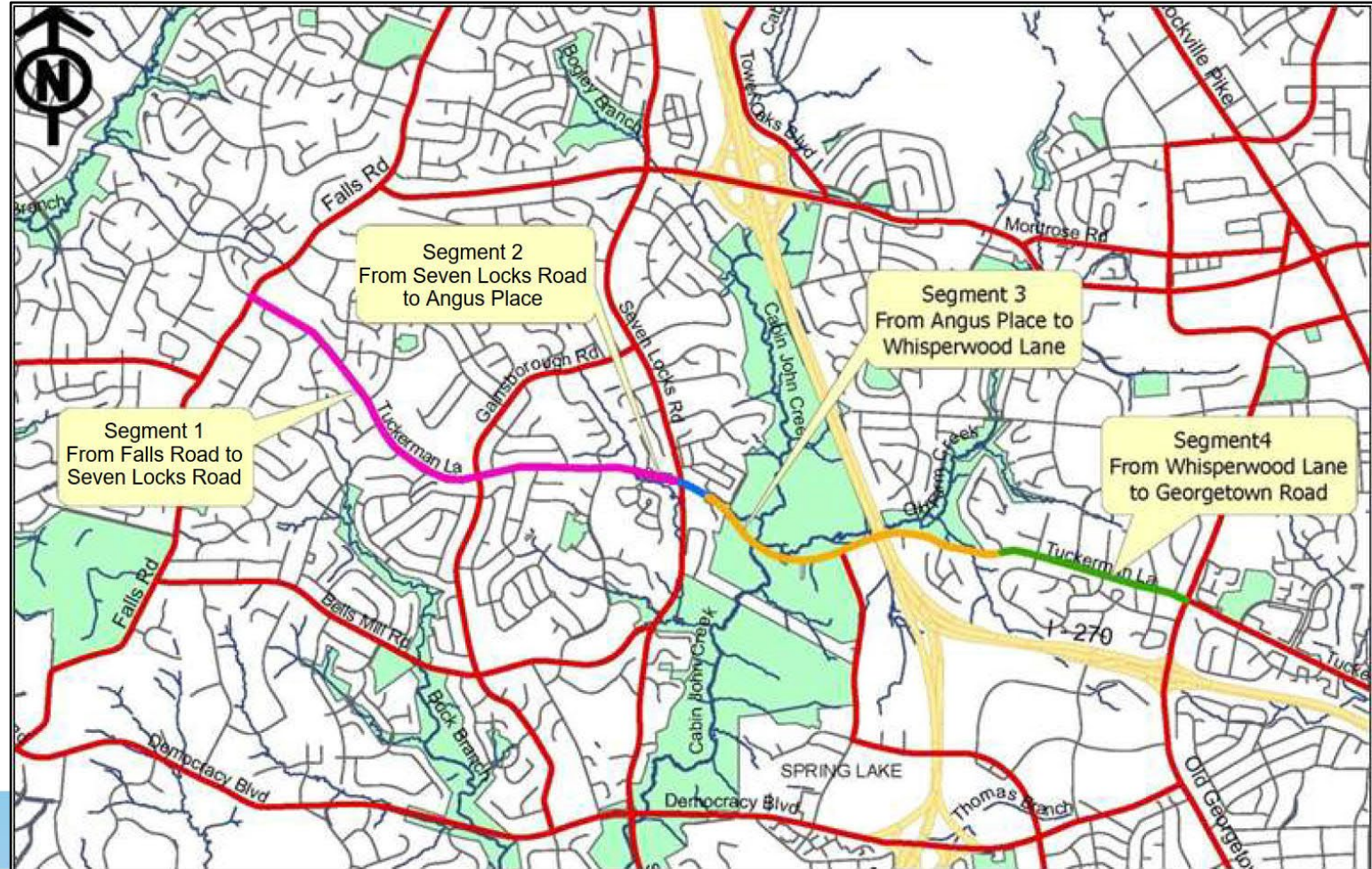
- Share the 35% design with the community
- Collect feedback from the community
- Answer questions from the community



Project Overview

Project Limit – Tuckerman Lane from Falls Road to Seven Locks Road (Segment 1)

- Scope of project:
 - Provide a shared use path along north side of Tuckerman Lane
 - Provide a sidewalk along south side of Tuckerman Lane
 - On-road bike lane in both directions
 - Drainage and SWM facilities
- NOT funded for final design or construction* (See note on next slide)



Project Overview

Current Project Milestone Schedule



*A portion of this project (sidewalk on the south side from Gainsborough Rd to Potomac Crest Drive) has been recommended for funding in the FY 23-29 CIP by the County Executive and currently being reviewed by the County Council



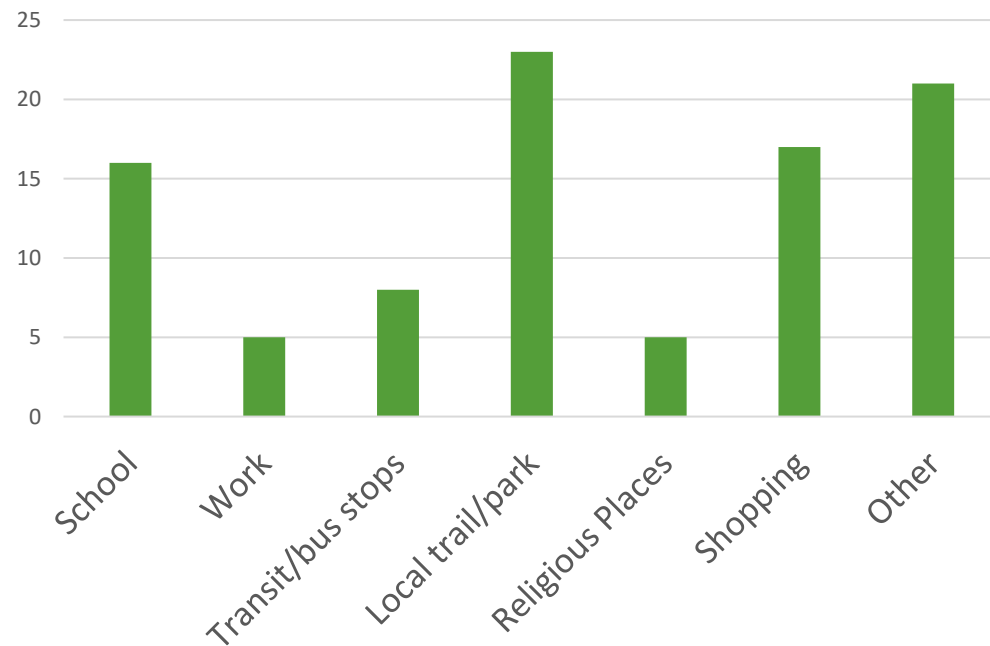
Previous Meeting Highlights

- Last Public Meeting – 11/12/20
- Over 90 attended virtually
- Over 60 comments received
 - 80% supported the project
 - 68% supported the previous design
- Closed section alternative selected (with concrete curb & gutter) to minimize property impacts



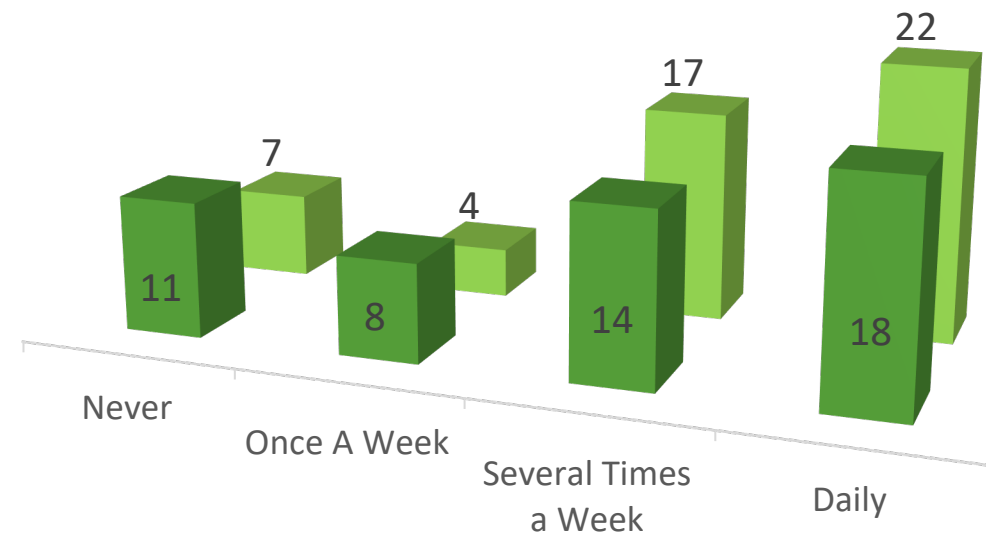
Previous Meeting Highlights

WHERE DO YOU TYPICALLY WALK/BIKE TO?



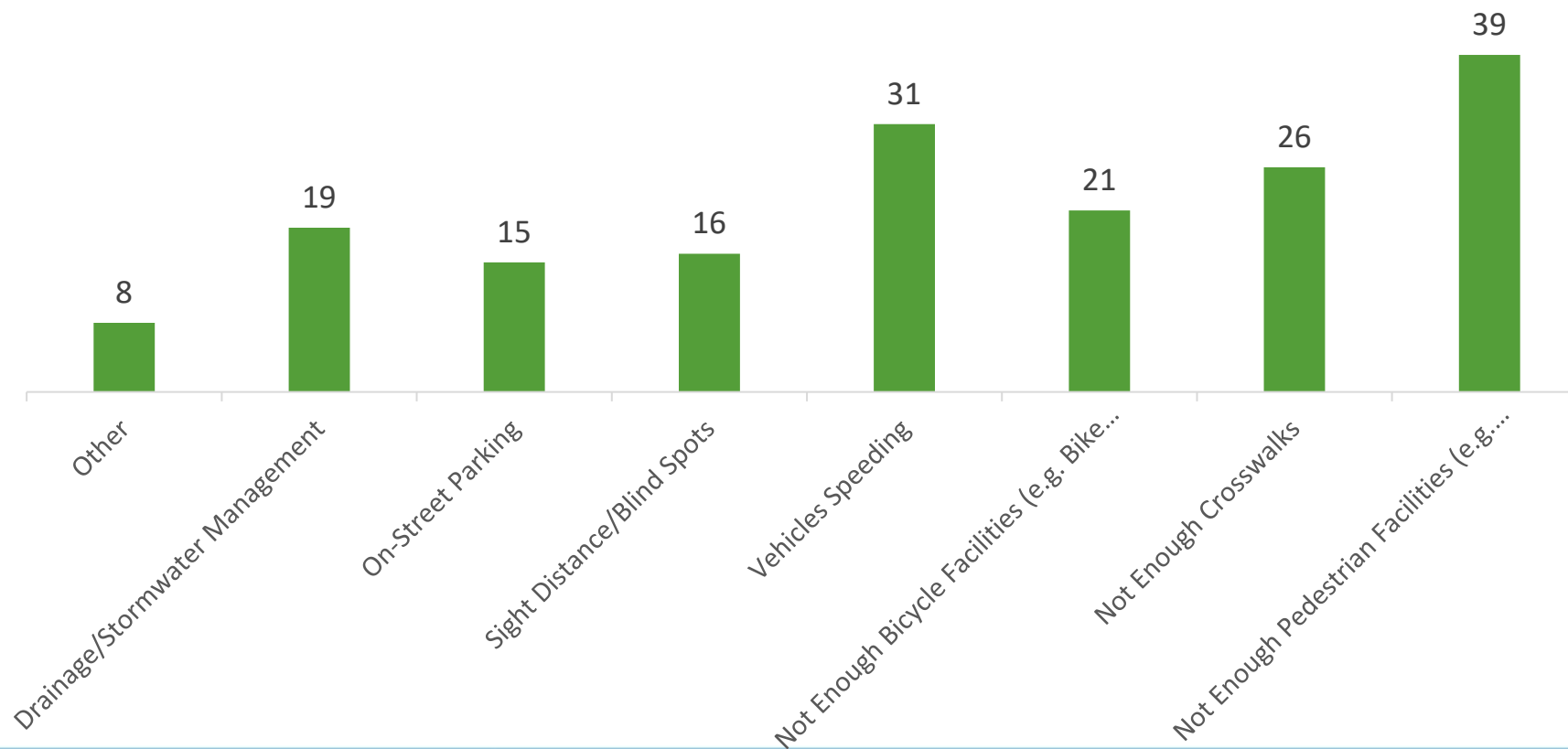
■ How often do you walk/bike along Tuckerman Lane currently?

■ If this project is constructed, how often do you think you will walk/bike along Tuckerman Lane?



Previous Meeting Highlights

What are some concerns you have on Tuckerman Lane currently?



Previous Meeting Highlights

- Design changes based on feedback:
 - Sidewalk width to 6' and sidepath to 10' – to accommodate students walking and biking to area schools and provide safe neighborhood connections
 - Lane widths to 10.5' - to encourage reduction of vehicle speeds on Tuckerman Lane
 - Alternating parking area on both north & south side of Tuckerman Lane
 - Providing ample lighting for roadway and sidewalk
 - Providing proper drainage & stormwater management design

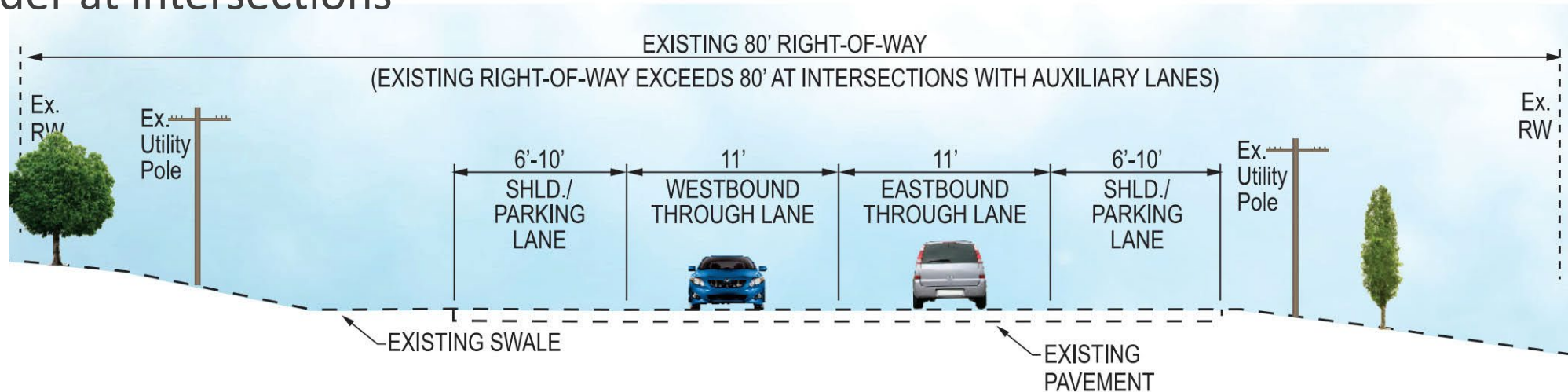




Preliminary Design

Existing Conditions

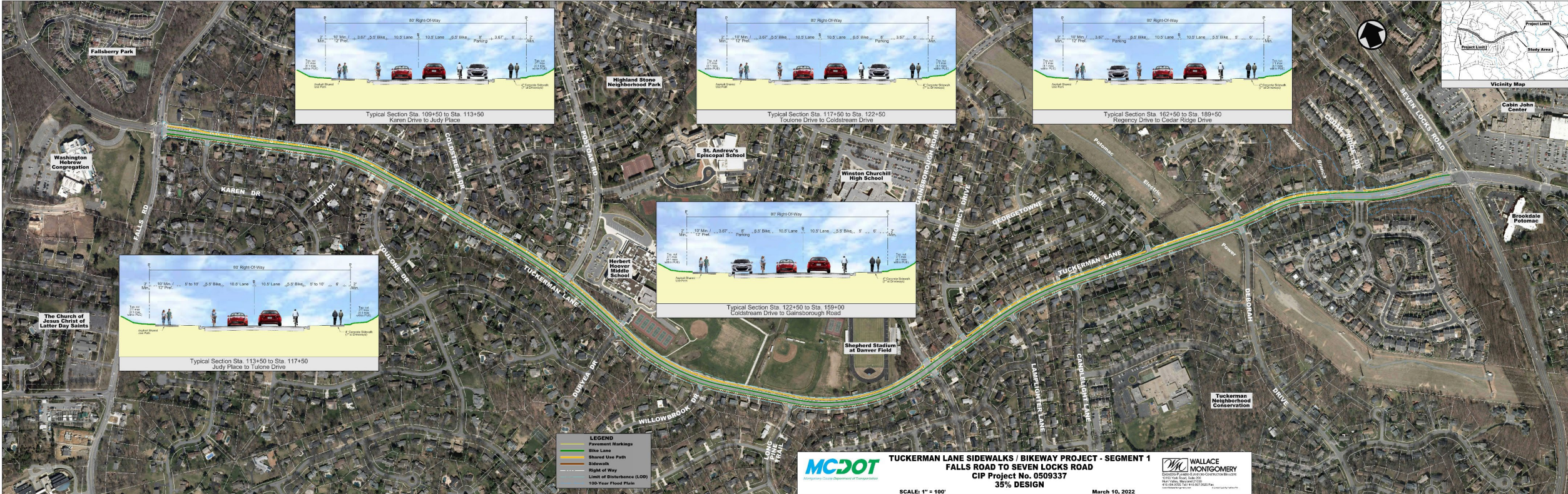
- Roadway width: varies 34' to 42' *
 - Right of Way width: 80' *
 - Shoulder/Parking/Bike/Walking Lane: varies 6' to 10'
 - Street parking on both sides
 - Some sidewalk on both sides
 - Overhead utilities along both sides
- * wider at intersections



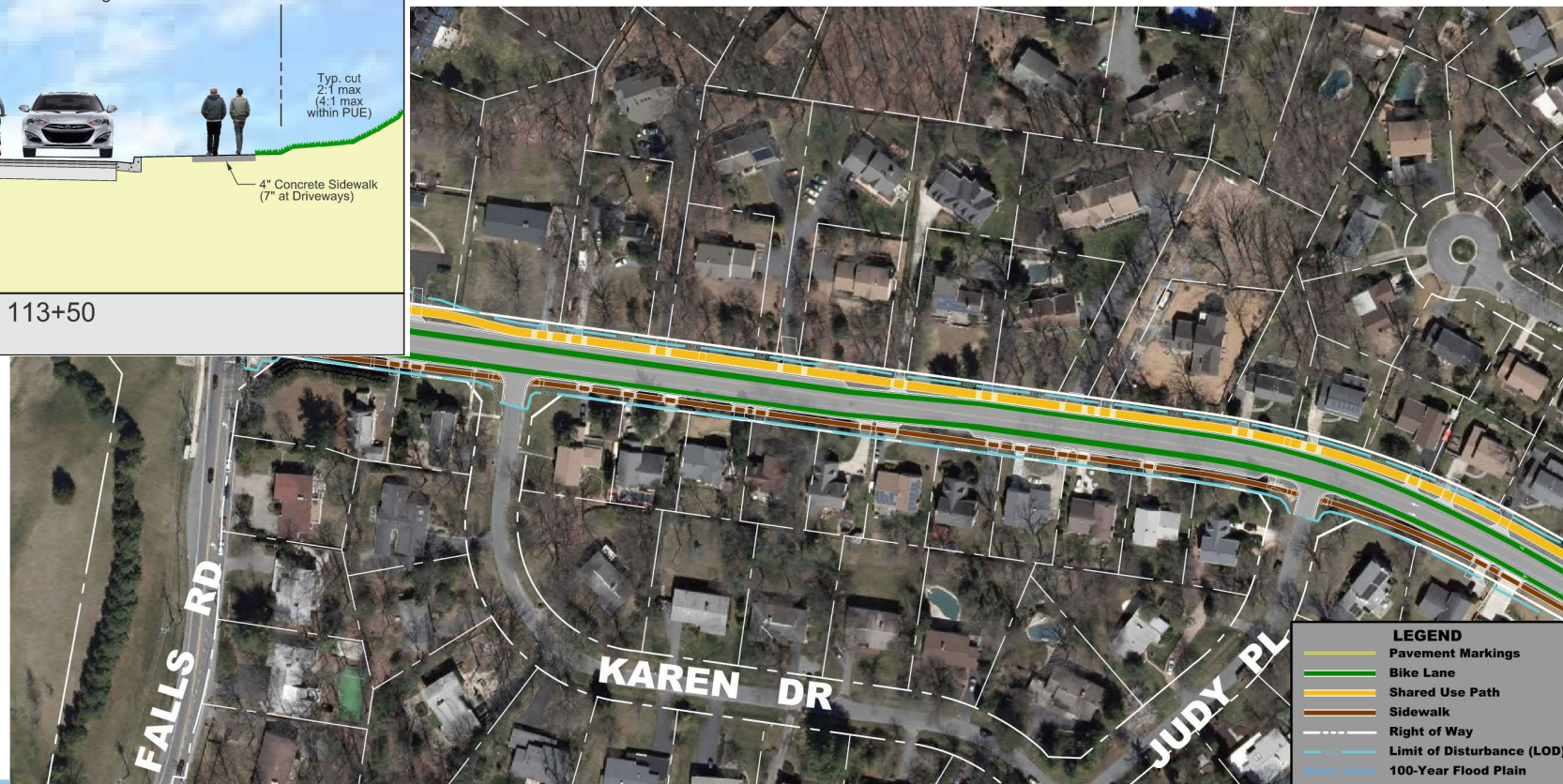
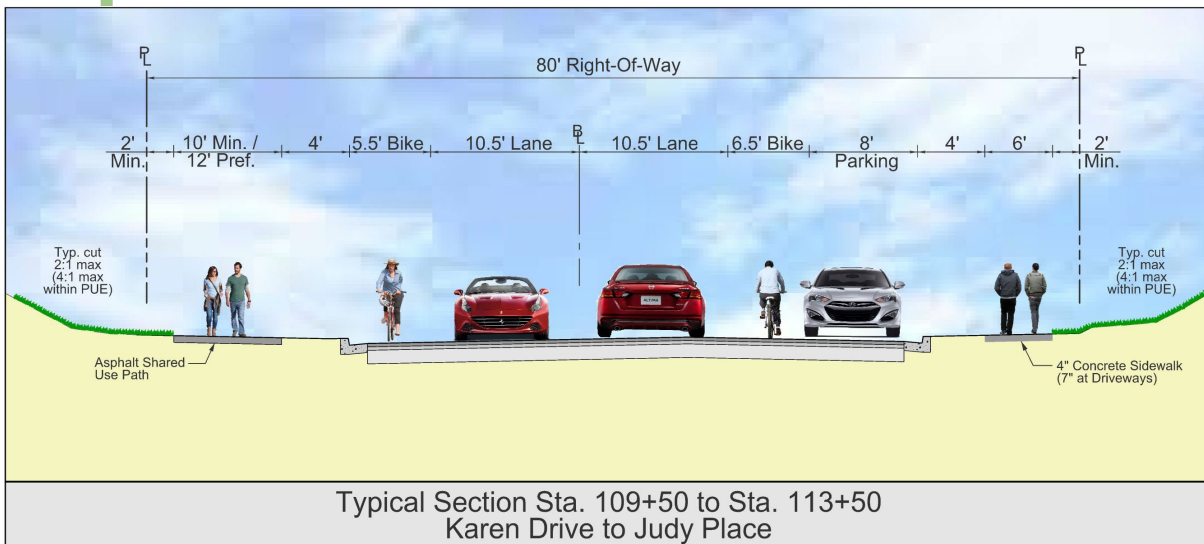
Tuckerman Lane Typical Section – Existing Conditions



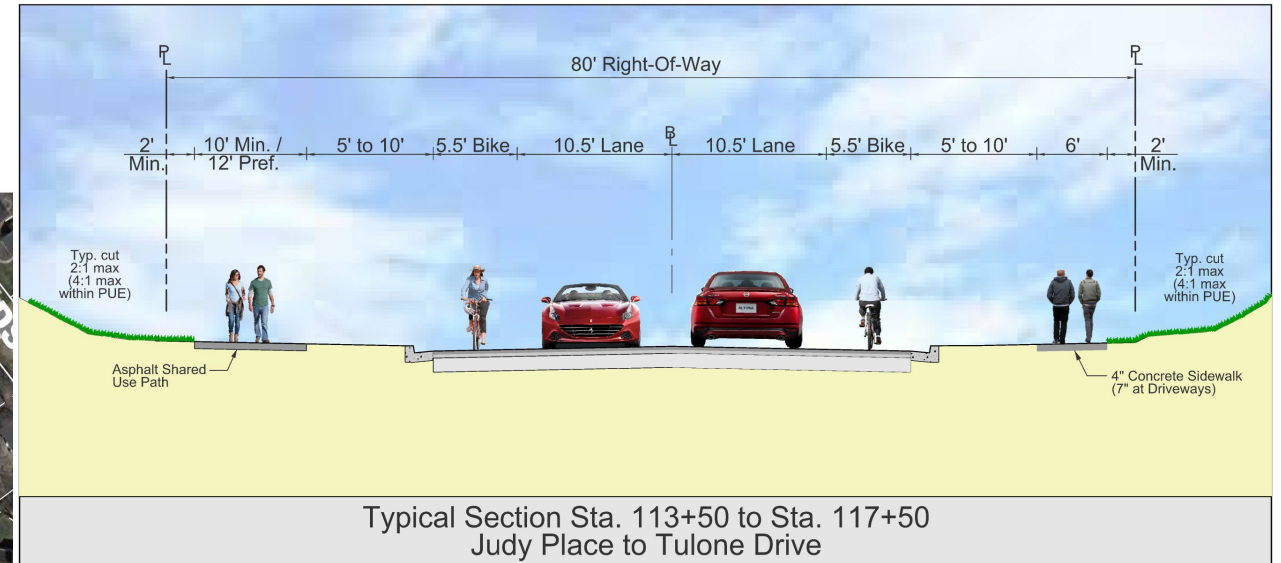
Preliminary Design – Plan View



Preliminary Design – Updated Typical Sections

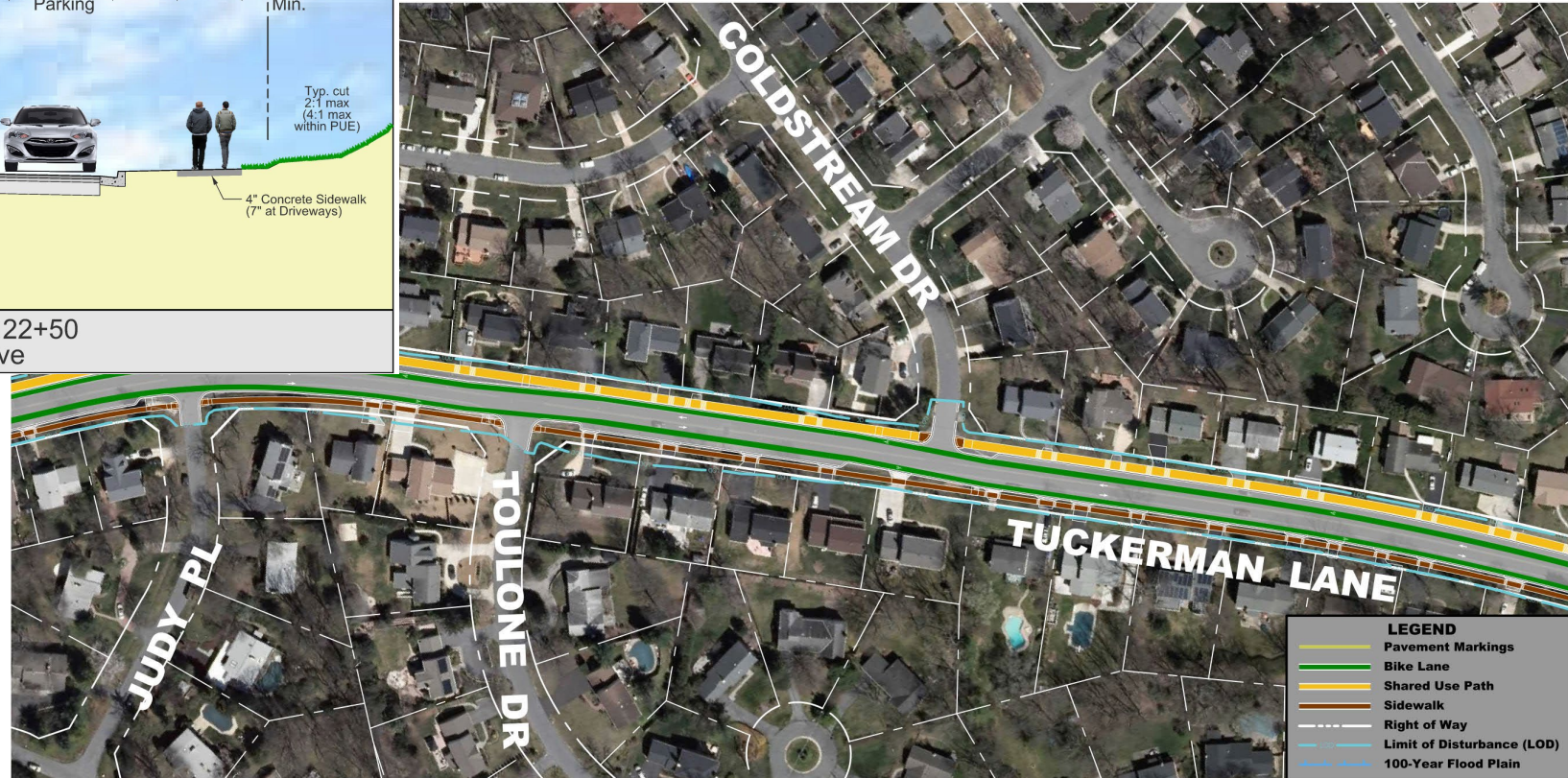
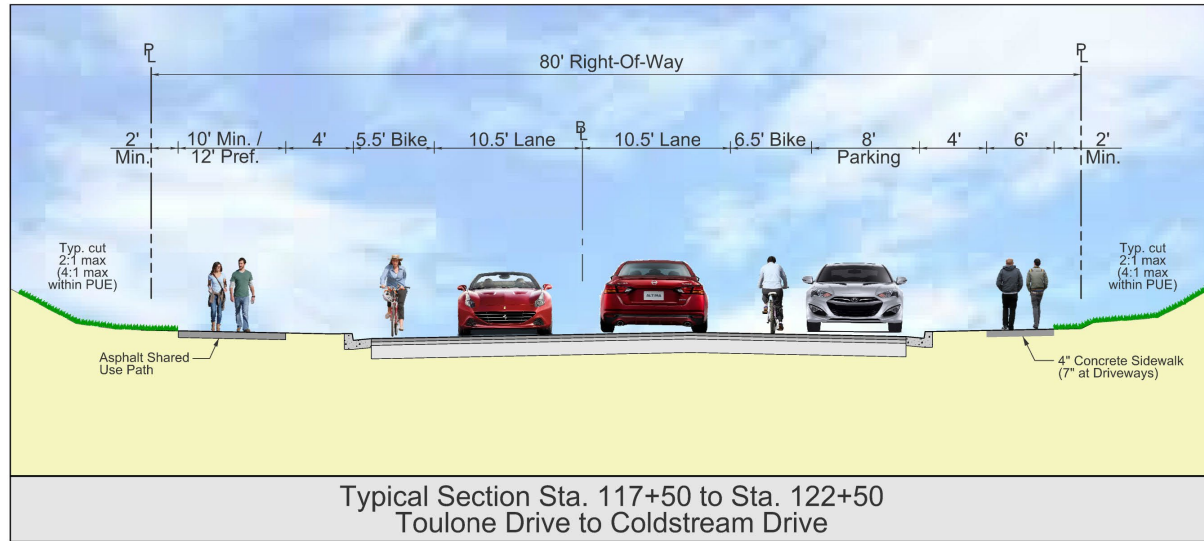


Preliminary Design – Updated Typical Sections

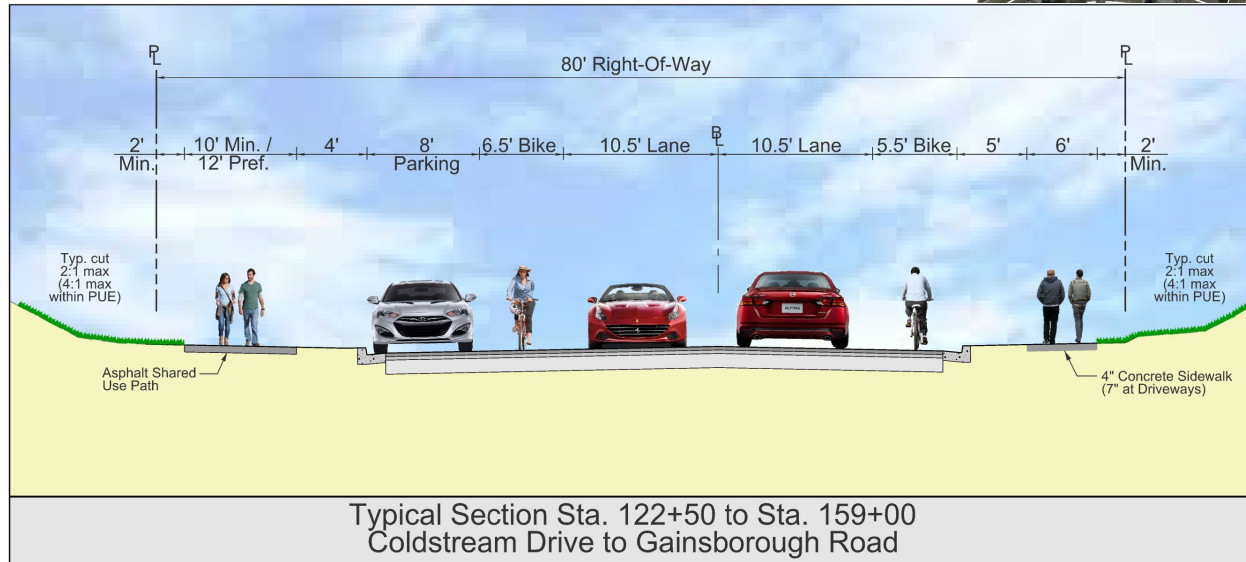


- LEGEND**
- Pavement Markings
 - Bike Lane
 - Shared Use Path
 - Sidewalk
 - Right of Way
 - Limit of Disturbance (LOD)
 - 100-Year Flood Plain

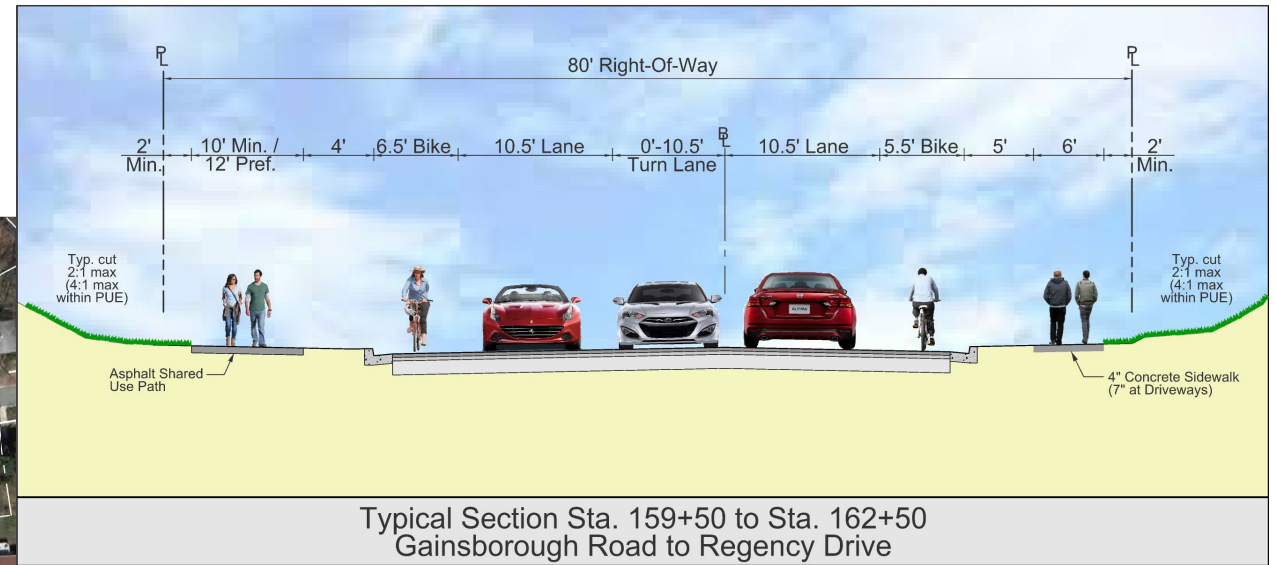
Preliminary Design – Updated Typical Sections



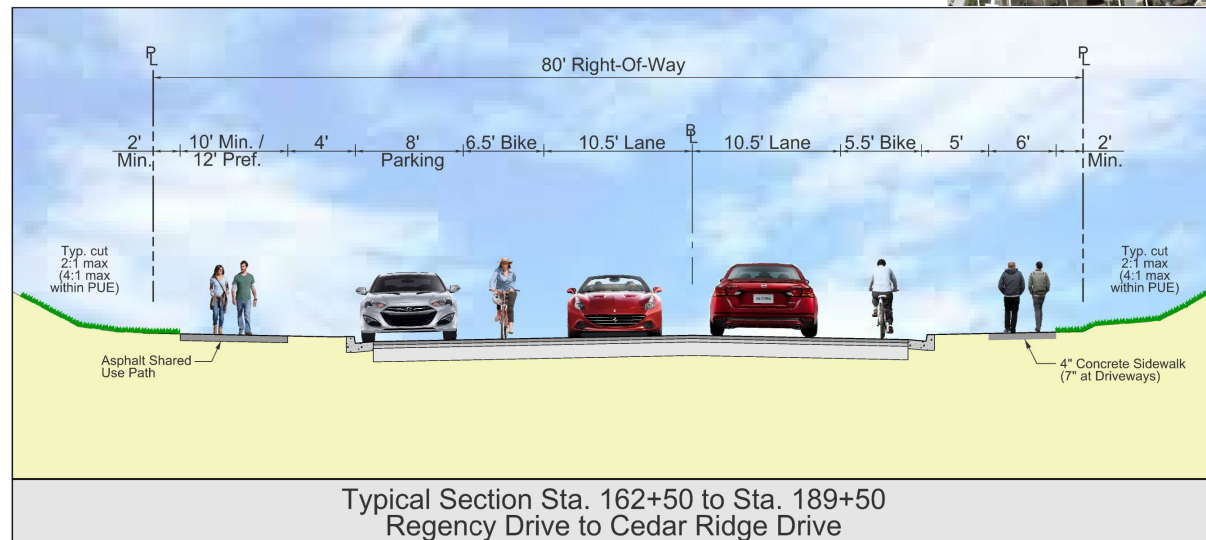
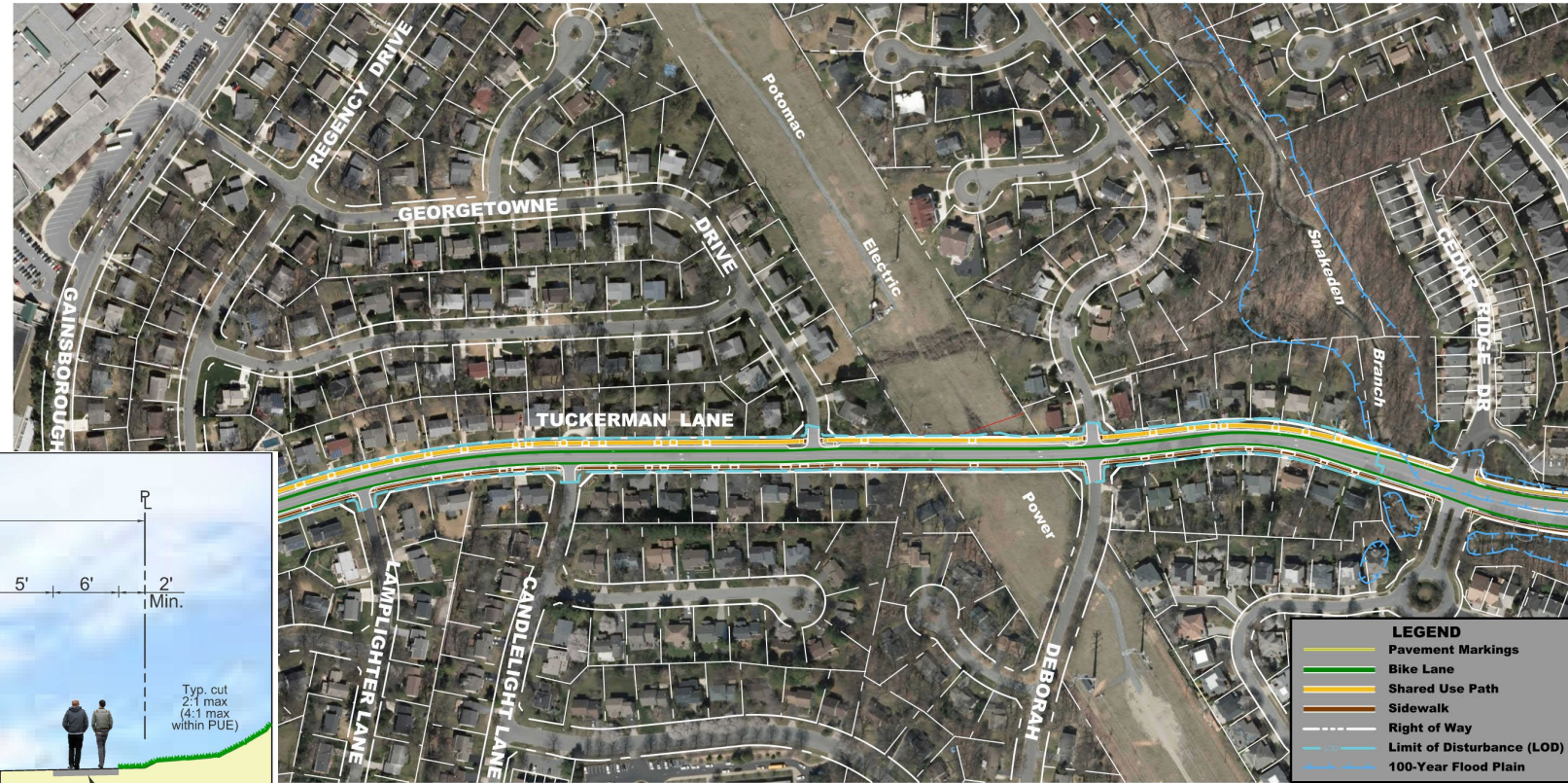
Preliminary Design – Updated Typical Sections



Preliminary Design – Updated Typical Sections



Preliminary Design – Updated Typical Sections



LEGEND	
	Pavement Markings
	Bike Lane
	Shared Use Path
	Sidewalk
	Right of Way
	Limit of Disturbance (LOD)
	100-Year Flood Plain



Cost & Impact Analysis

Tree Impacts	231	
Property Impacts (Acres)	Temporary	1.95 Ac
	Permanent	0.25 Ac
Estimated Construction Cost	\$11.5 M	
Estimated Easement Cost	\$1.8 M	
Total Construction Cost	\$13.3 M	

Next Steps

- Collect feedback from the community through 4/11/22
 - Online comment form -
<https://tinyurl.com/tuckerman-comment>
 - Email to –
angel.cheng@montgomerycountymd.gov
- SWM Concept Approval
- Mandatory Referral





Questions / Comments



Angel Cheng, P.E.
Project Manager



240-777-7274



angel.cheng@montgomerycountymd.gov



Project Website

<https://www.montgomerycountymd.gov/dot-dte/projects/tuckermanlane/>

Online Comment Form

<https://tinyurl.com/tuckerman-comment>

