

# TUCKERMAN LANE SIDEWALK/BIKEWAY PROJECT – SEGMENT 1

VIRTUAL PUBLIC MEETING

NOVEMBER 12, 2020







# Welcome to the virtual public meeting!

- We are all learning how to conduct virtual community meetings, please bear with us
- We are going to go over some basic controls to help you use the Zoom meeting format before we start the presentation.
- Please note that this meeting is being recorded.
  - The video will be posted on the project website after the meeting
  - If you do not wish to have your voice or likeness recorded, please keep your camera off, and refrain from asking questions using the audio option. Instead, you can send your questions via the chat option.







# Using Zoom

## ➤ Muting

- Everyone is on mute. You cannot unmute yourself. We can unmute you during the Q&A time.
- To request to speak, you will need to use the **raise hand** feature. Once we unmute you, you may still need to click a pop-up menu to unmute yourself.
- If you have called in by phone, you can unmute yourself by dialing \*6 once we unmute you.





# Using Zoom

## ➤ Video

- Your camera is off by default. To ensure adequate bandwidth for this meeting, we request that you please keep your camera off during the meeting.







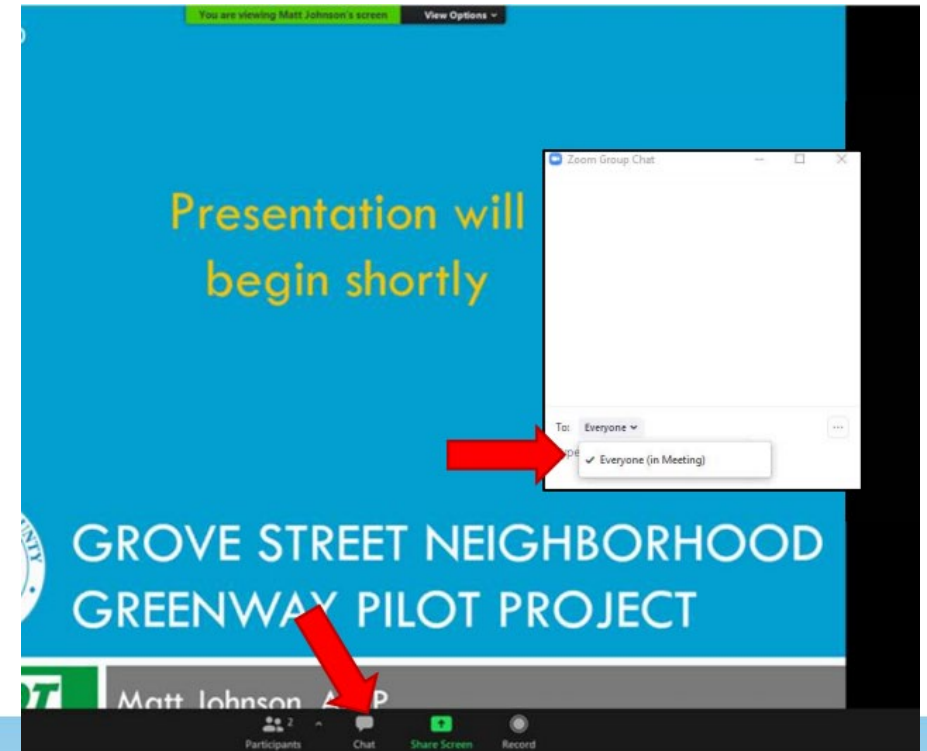
# Using Zoom

## ➤ Ask a question (text)

- If you have a questions during the presentation, please sent it via **chat**.

### To send a chat:

- ❑ Click “chat” at the bottom of the menu
- ❑ In the “to” field, change the drop down to “Corey Pitts”
- ❑ Type your question and send it







# Using Zoom

- Ask a question (raise your hand)
  - If you'd like to speak to ask a question or make a comment, please **raise your hand**.

## To raise your hand:

- ☐ Click “participants” at the bottom menu
- ☐ Click the blue “raise hand” button
- ☐ If you’ve dialed in by phone, dial \*9





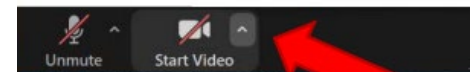
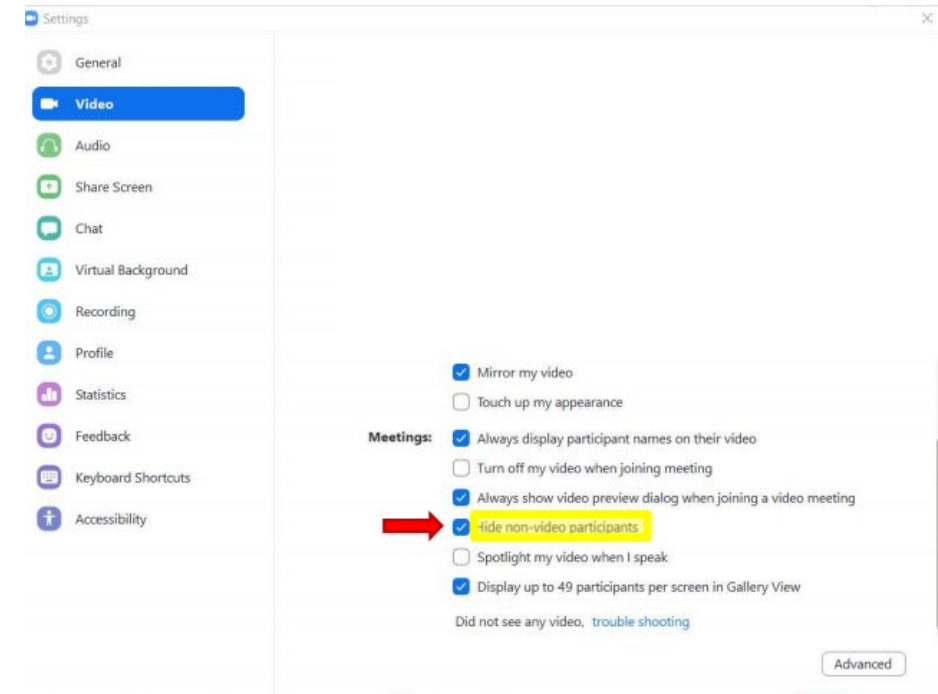


# Using Zoom

## ➤ View

To change your view so that you only see people with cameras on:

- ❑ Click the up arrow next to “start video”
- ❑ Select “video settings”
- ❑ Make sure “Hide non-video participants” is checked







# Introduction



# Outline

- Project Overview
- Design Considerations
- Preliminary Design
- Impact Analysis Summary
- Next Steps
- Questions / Comments





# Meeting Outcomes

- Share the preliminary design with the community
- Collect feedback from the community
- Answer questions from the community

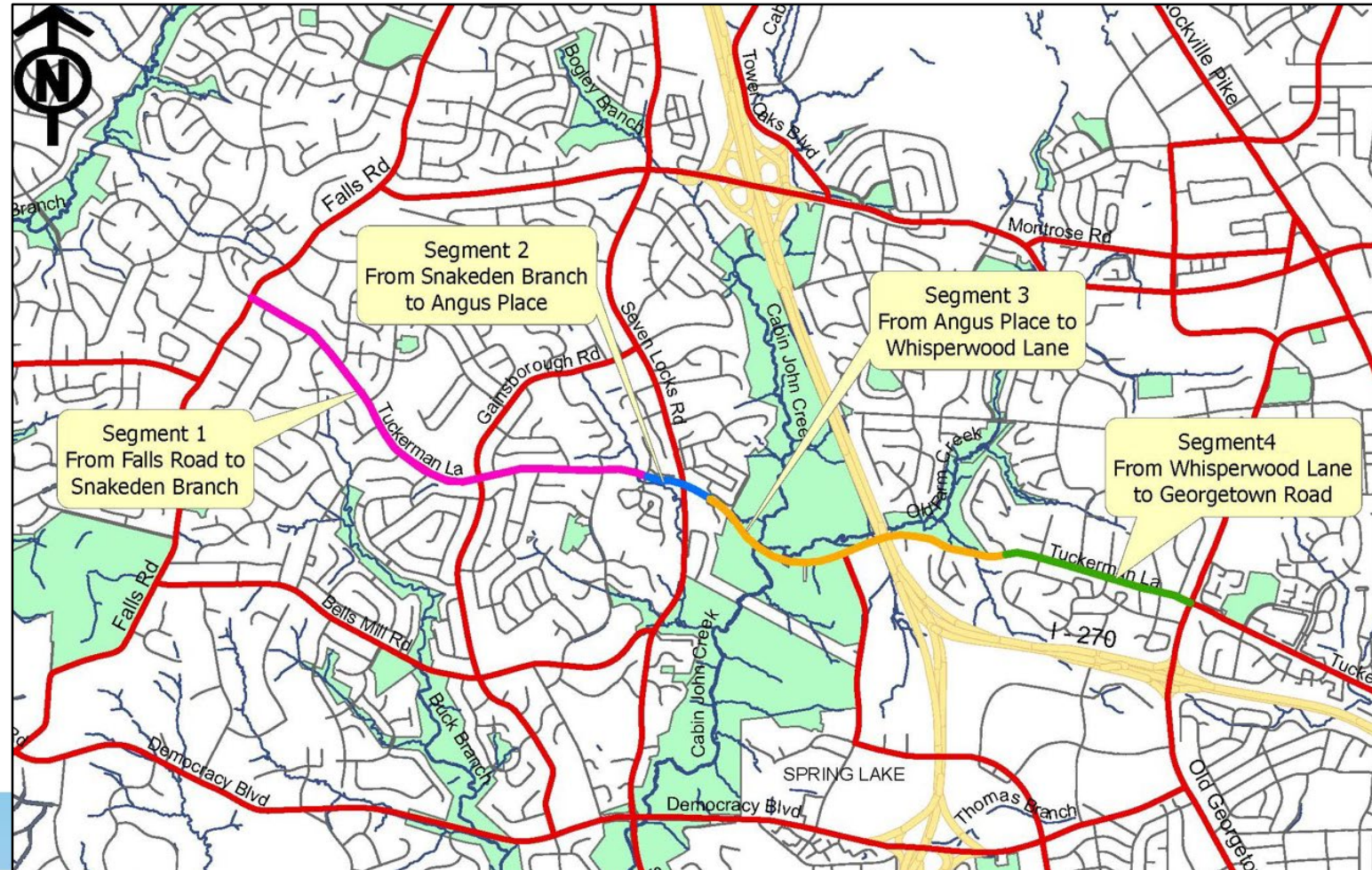




# Project Overview

## Project Limit – Tuckerman Lane from Falls Road to Snakeden Branch (Segment 1)

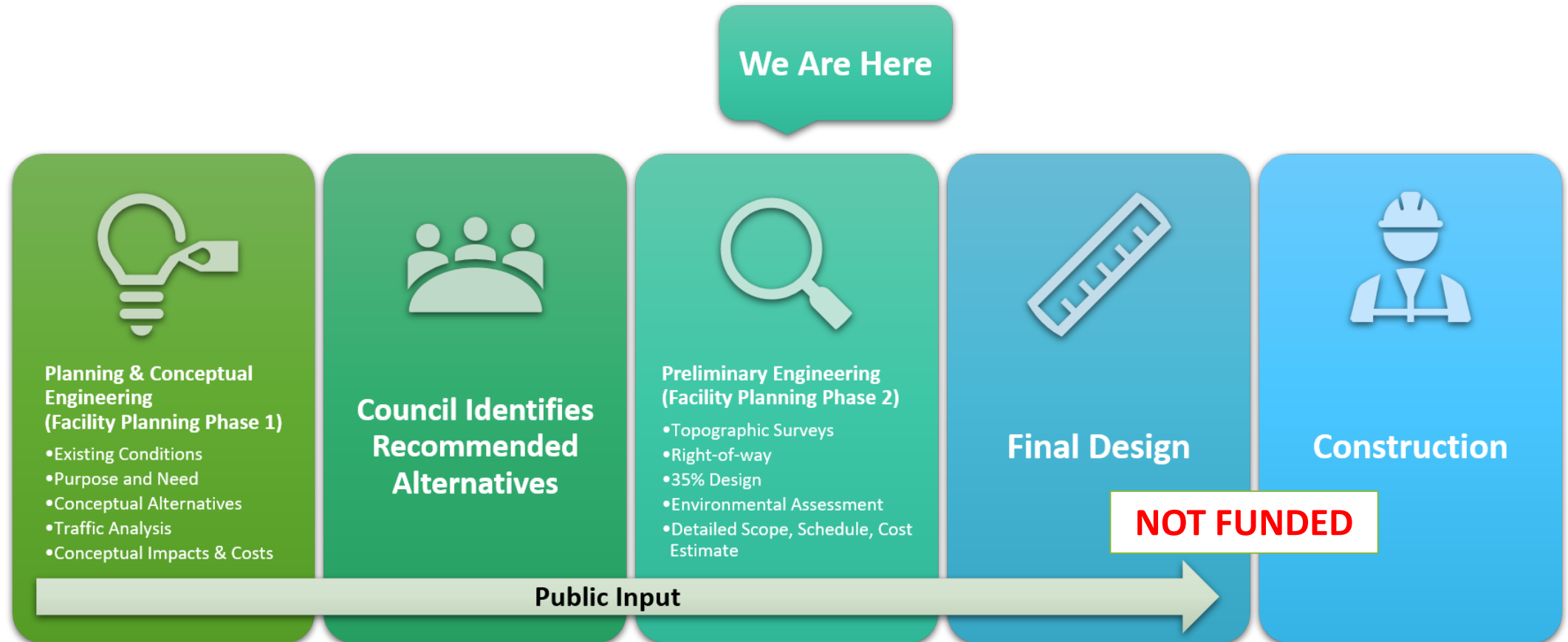
- Scope of project:
  - Provide a shared use path along north side of Tuckerman Lane
  - Provide a sidewalk along south side of Tuckerman Lane
  - On-road bike lane in both direction
  - Drainage and SWM facilities
- NOT funded for final design or construction





# Project Overview

## Current Project Milestone Schedule





# Design Considerations

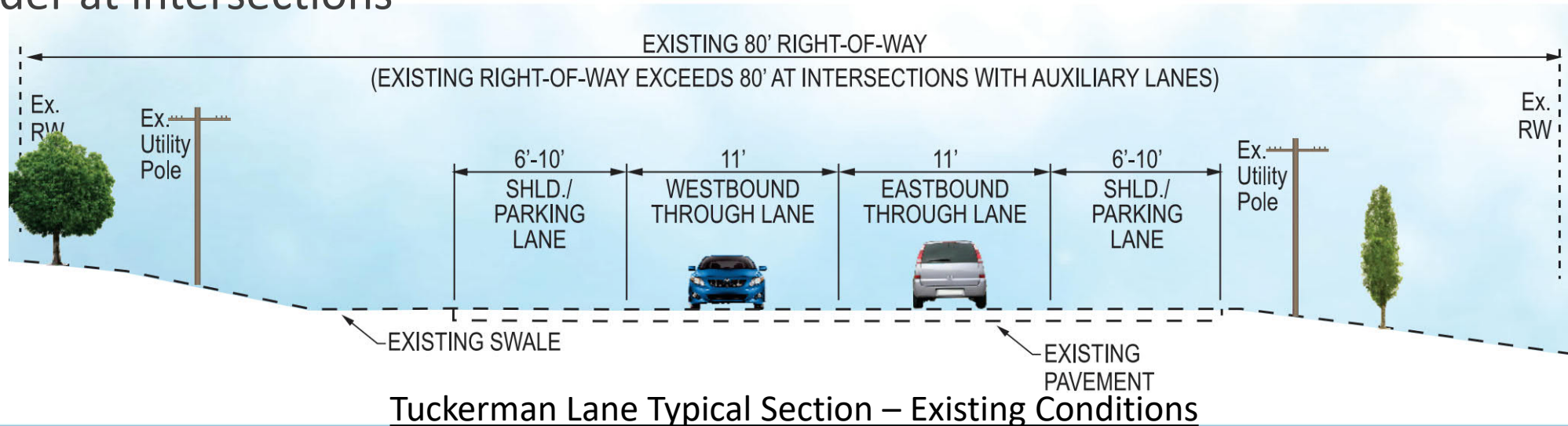
- Safety – All users (Peds, cyclists, drivers)
- Right of Way/Property Impacts
- Pathway Lighting
- Utility poles and fire hydrants
- Trees
- Drainage & Stormwater Management
- Pavement usage/Buffer
- Transit/Bus Stops



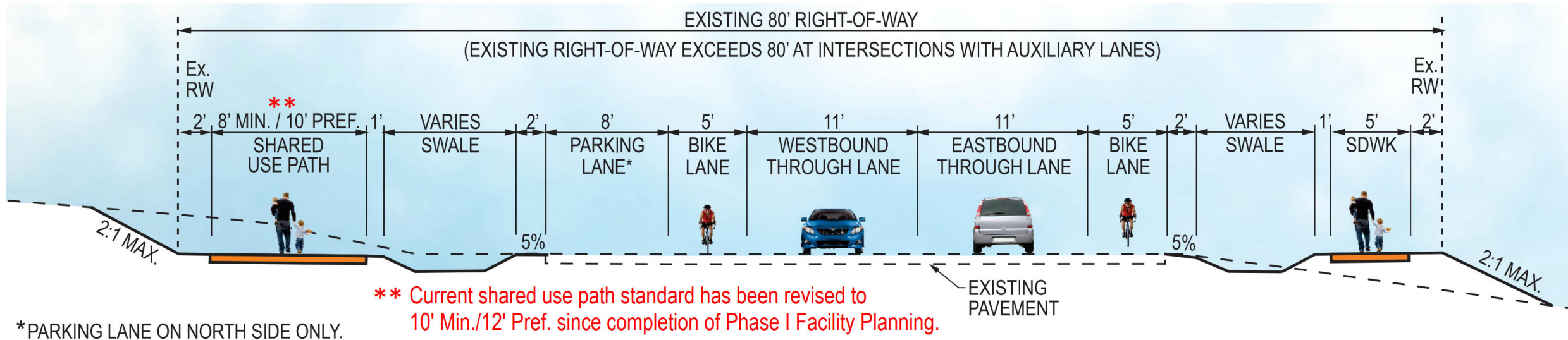


# Preliminary Design – Existing Conditions

- Roadway width: varies 34' to 42' \*
  - Right of Way width: 80' \*
  - Shoulder/Parking/Bike/Walking Lane: varies 6' to 10'
  - Street parking on both sides
  - Some sidewalk on both sides
  - Overhead utilities along both sides
- \* wider at intersections



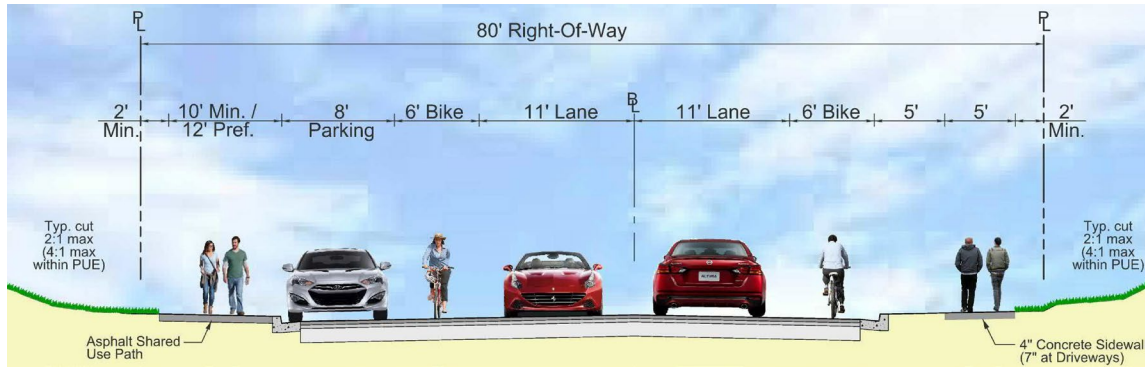
# Preliminary Design – Selected Alternative from Phase I Facility Planning



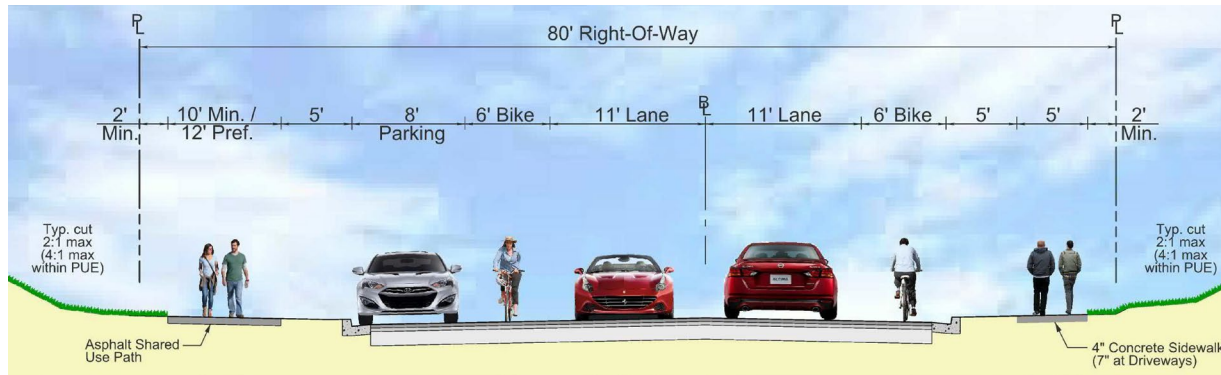
Tuckerman Lane Typical Section – Open Section



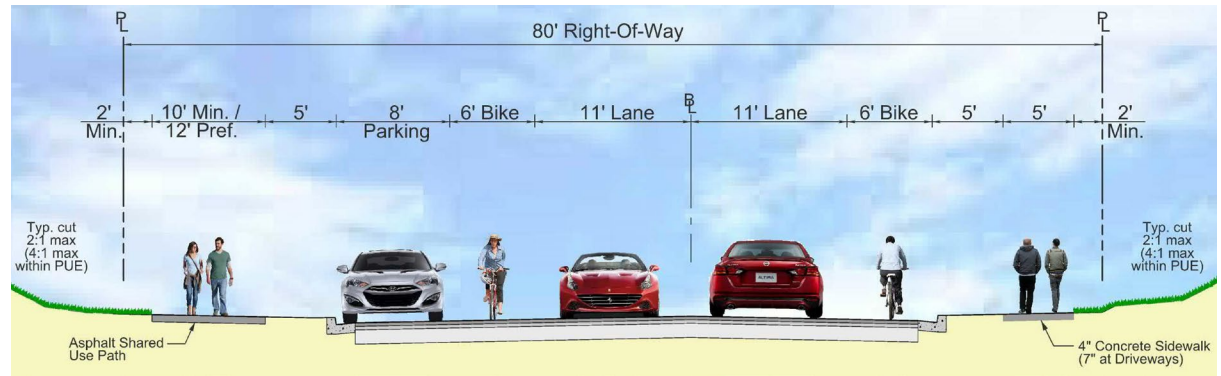
# Preliminary Design – Typical Sections (Closed Section)



Tuckerman Lane Typical Closed Section – Falls Rd. to Duryea Dr.



Tuckerman Lane Typical Closed Section – Duryea Dr. to Gainsborough Rd.

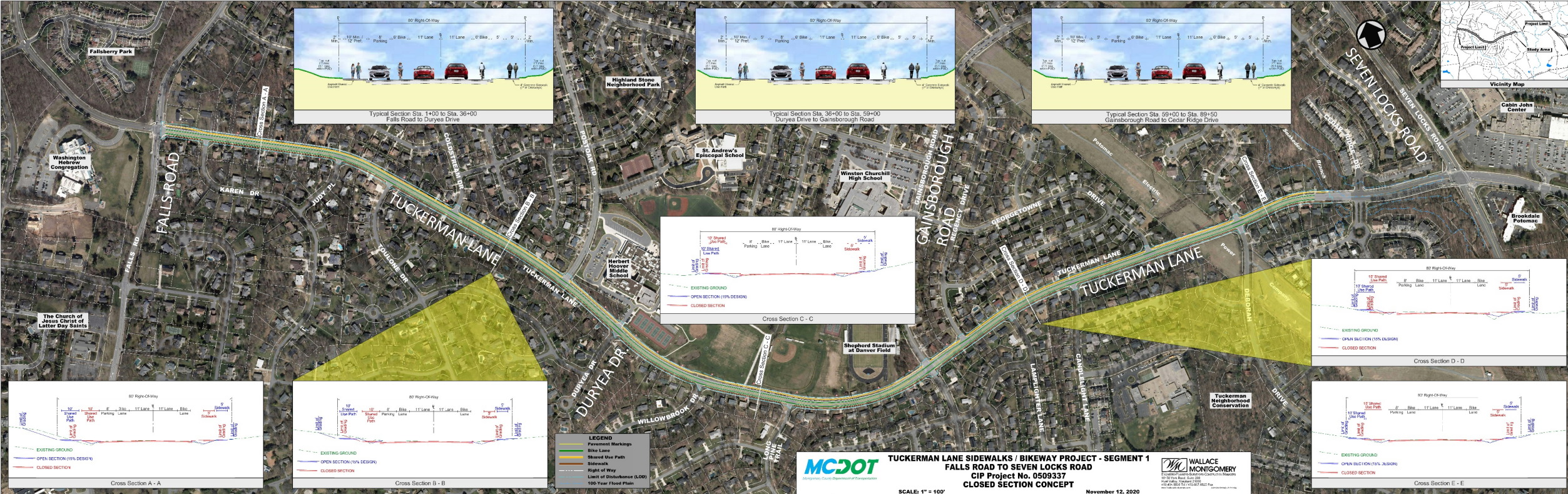


Tuckerman Lane Typical Closed Section – Gainsborough Rd. to Cedar Ridge Drive



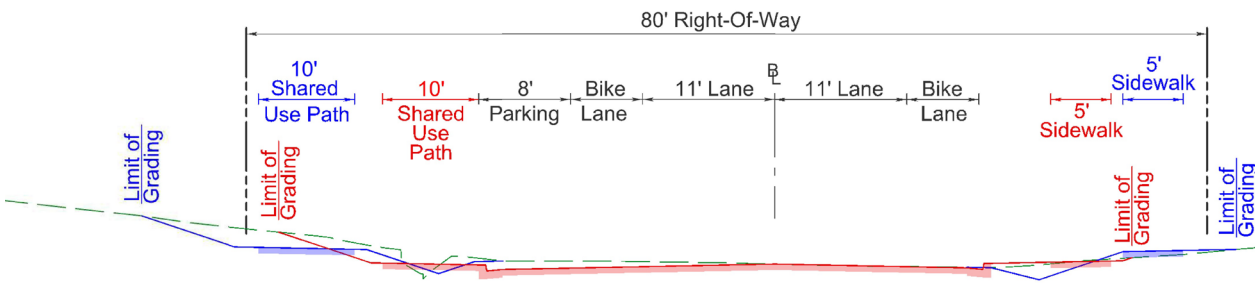
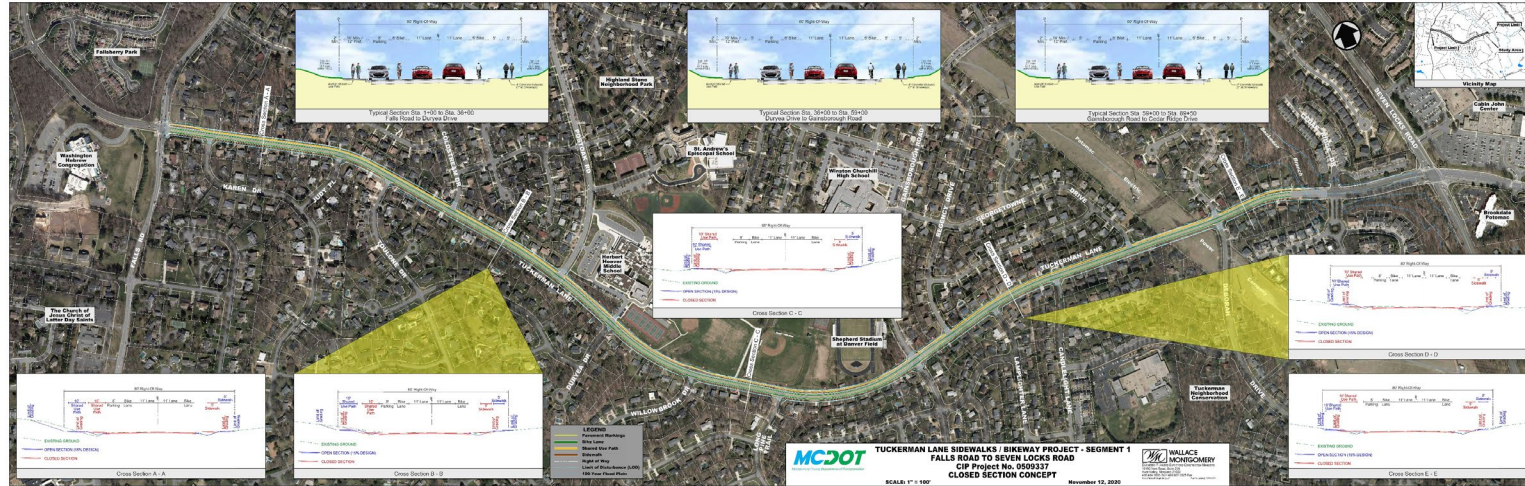


# Preliminary Design – Cross Section Comparison

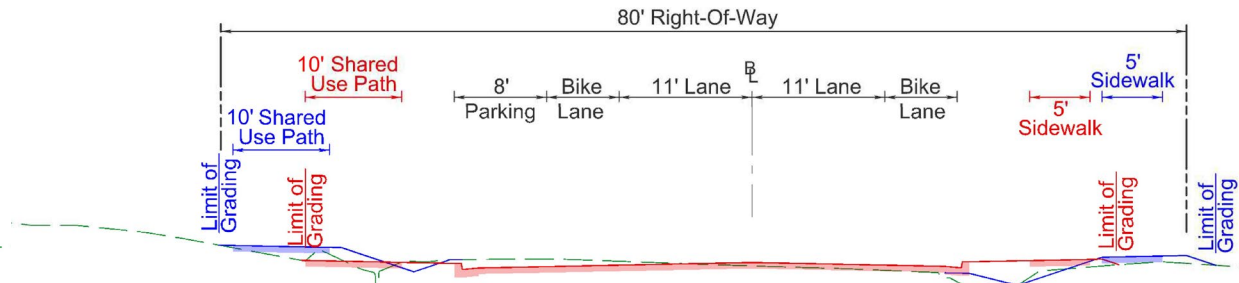




# Preliminary Design – Cross Section Comparison



**Cross Section B-B**



**Cross Section D-D**

EXISTING GROUND

OPEN SECTION (15% DESIGN)

CLOSED SECTION

EXISTING GROUND

OPEN SECTION (15% DESIGN)

CLOSED SECTION



# Impact Analysis Summary

	Open Section	Closed Section	Difference
<b>Property Impacts</b>			
Number	165	51	-114
Area (Acres)	4.08 Ac	0.67 Ac	-3.41 <sup>a</sup> Ac
Tree Impact	233	194	-39
Utility Poles Impact	56	25	-31
Street Lighting	Similar		
On-Street Parking	Similar		
Stormwater Management	Accommodated <sup>b</sup>		
Traffic Signal	Similar		
Construction Cost	\$8.25 M	\$8.65 M	+ \$0.40 M <sup>c</sup>
Construction Easement Cost (Estimated)	\$3.60 M	\$0.60 M	- \$3.00 M
Total Cost	\$11.85 M	\$9.25 M	- \$2.00 M

## Notes:

<sup>a</sup> Proposed limit of disturbance would be an average of 9' less on each side of the road with the Closed Section

<sup>b</sup> SWM treatment measures may be different, however, both would accommodate the requirements

<sup>c</sup> Additional concrete items (drainage, curb & gutter) increase the cost by \$0.9 M, while the reduced impact to utility poles decrease the cost by \$0.5 M



# Next Steps

- Collect feedback from the community through 11/30/20
  - Online comment form - <https://tinyurl.com/tuckerman-comments>
  - Interactive Web App
  - Email to: [angel.cheng@montgomerycountymd.gov](mailto:angel.cheng@montgomerycountymd.gov)
  - Traditional mail to:  
*MCDOT – Division of Transportation Engineering*  
*100 Edison Park Drive, 4<sup>th</sup> Floor*  
*Gaithersburg, MD 20878*
- 35% Design – Engineering Design & SWM Concept
- Mandatory Referral







## Questions / Comments



Angel Cheng, P.E.  
Project Manager



240-777-7274\*



[angel.cheng@montgomerycountymd.gov](mailto:angel.cheng@montgomerycountymd.gov)

\* Due to COVID-19, County staff has been teleworking from home,  
and email would be the preferred form of communication.



Project Website

<https://www.montgomerycountymd.gov/dot-dte/projects/tuckermanlane/>

Online Comment Form

<https://tinyurl.com/tuckerman-comments>

