



# Community Meeting

## Veirs Mill Road Bicycle & Pedestrian Improvements

October 3, 2022

Matt Johnson, AICP

Project Manager

Montgomery County Department of Transportation

[Matt.Johnson@MontgomeryCountyMD.gov](mailto:Matt.Johnson@MontgomeryCountyMD.gov)





# Welcome

- Welcome to the community meeting.
- This is a hybrid meeting, with an in-person element and an online element. Please be patient with us as we try out this new format.
- The project webpage is located at:  
<https://www.montgomerycountymd.gov/dot-dte/projects/veirsmill/index.html>



# Project Background

- These improvements are being designed and constructed as part of the Veirs Mill Bus Rapid Transit (BRT) project, however this meeting will focus only on the pedestrian and bicycle elements.
- The Veirs Mill BRT project will introduce high-quality bus service along the Veirs Mill Road corridor between Wheaton Metro and Montgomery College. You can learn more at the BRT project webpage.

<https://www.montgomerycountymd.gov/dot-dte/projects/VeirsMillBRT/>



# Overview

- The goal of this project is to provide continuous pedestrian facilities on both sides of Veirs Mill Road between Wheaton and Robindale Drive.
  - On the south side of Veirs Mill Road, we propose a sidewalk be constructed where gaps exist today.
  - On the north side of Veirs Mill Road, we propose a shared-use path, intended for use by both pedestrians and cyclists, except where a service road exists, where only a sidewalk will be provided.
- We are also proposing additional protected crossings of Veirs Mill Road.
- Some pedestrian improvements are also proposed along Randolph Road.

# Schedule

- We are currently in Preliminary Design (30% complete)
- As the design progresses, we anticipate holding two additional public meetings which will include the BRT and bike/ped projects
- 100% Design is anticipated in the Summer of 2024
- An additional public meeting is anticipated to be held prior to construction
- Construction is anticipated to begin in the Spring of 2025

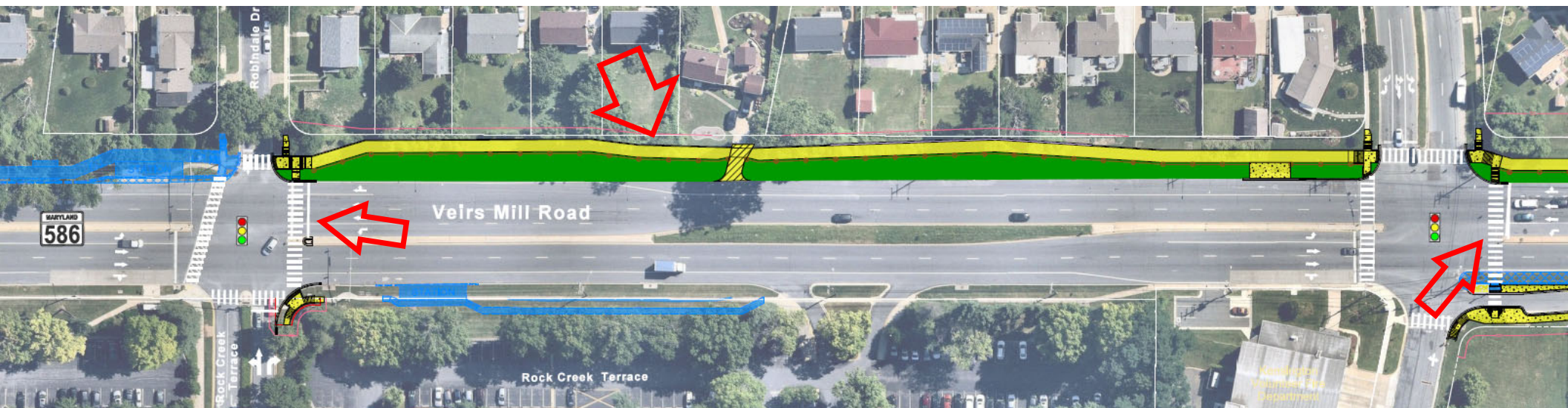
# Corridor Overview

- Let's walk through the corridor from west to east, starting at Robindale Drive.
- On these graphics, blue colors indicate elements of the BRT project previously included in the project. Yellow color indicates pedestrian and bicycle elements added to the project as part of this effort.
- All of these maps are available on the project webpage to view at your leisure.



# Corridor Overview

- Robindale Drive to Parkland Drive
  - New shared-use path on the north side
  - New east leg crosswalk at Robindale Dr
  - New east leg crosswalk at Parkland Dr



# Corridor Overview

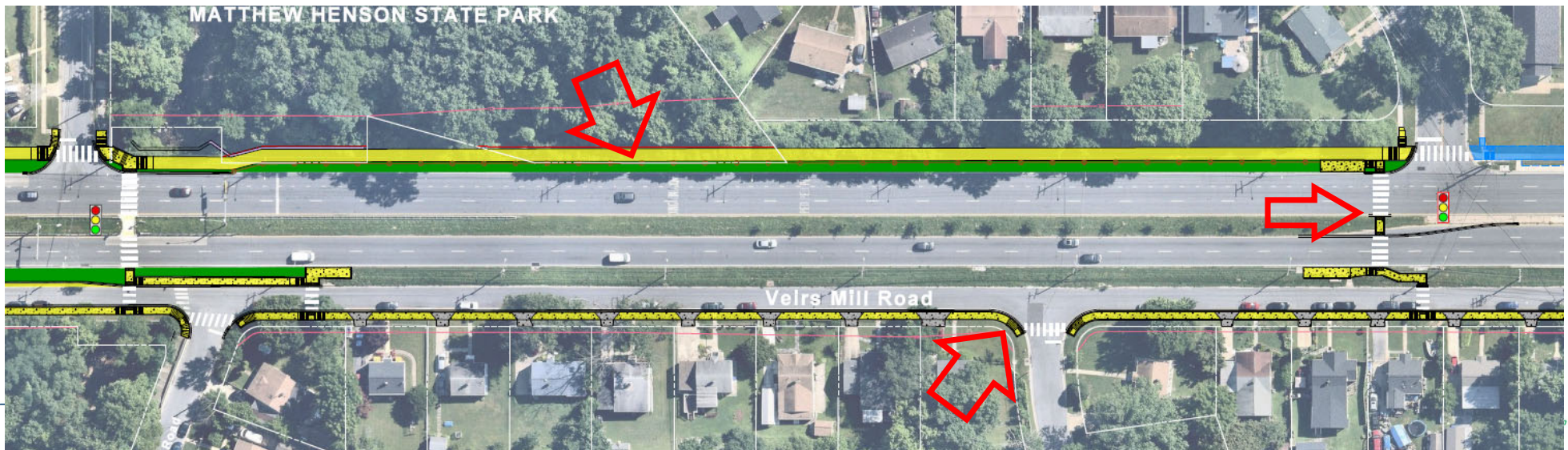
- Parkland Drive to Turkey Branch Parkway
  - New shared-use path on the north side
  - New sidewalk on south side of service road
  - Note, BRT queue jump lane in blue





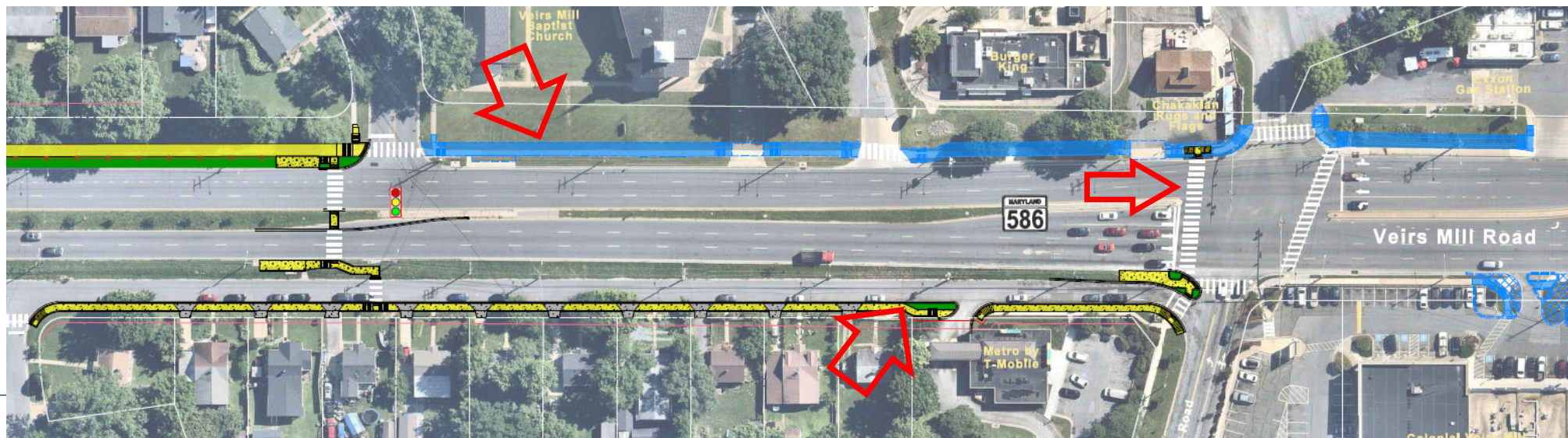
# Corridor Overview

- Turkey Branch Parkway to Havard Street
  - New shared-use path on the north side
  - New sidewalk on south side of service road
  - New signaled pedestrian crossing at Havard St



# Corridor Overview

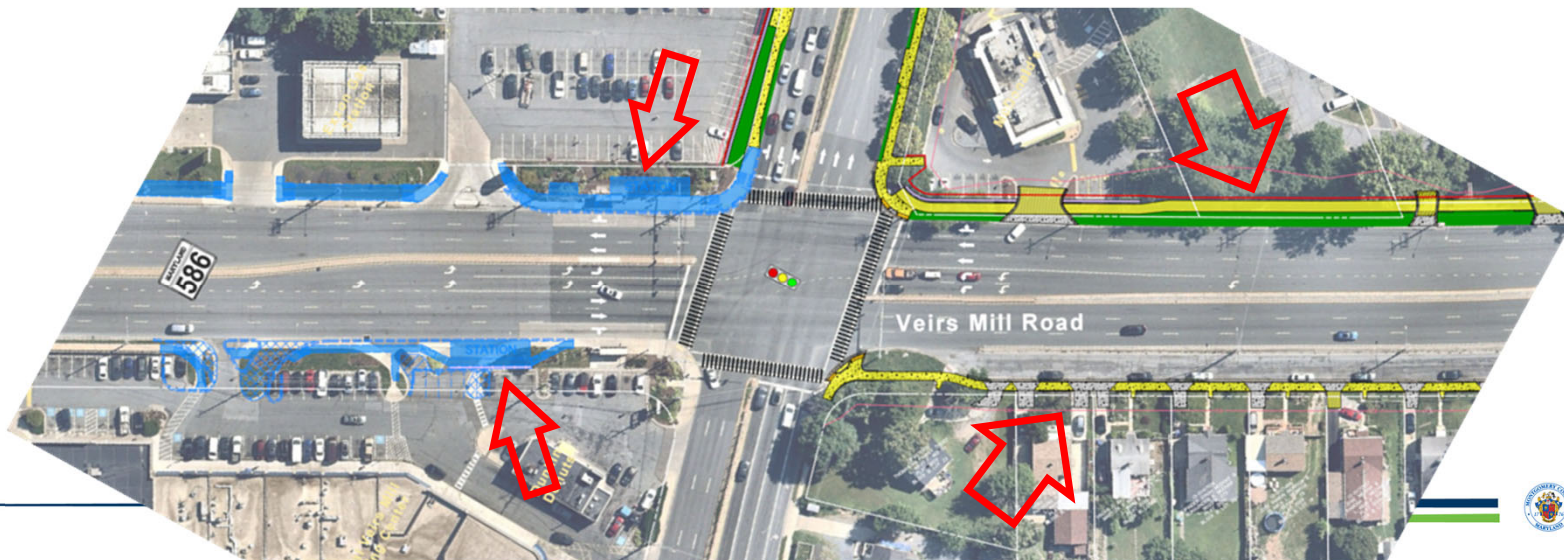
- Havard Street to Gridley Road
  - New shared-use path on the north side
  - New sidewalk on south side of service road
  - New west leg crosswalk at Gridley Road





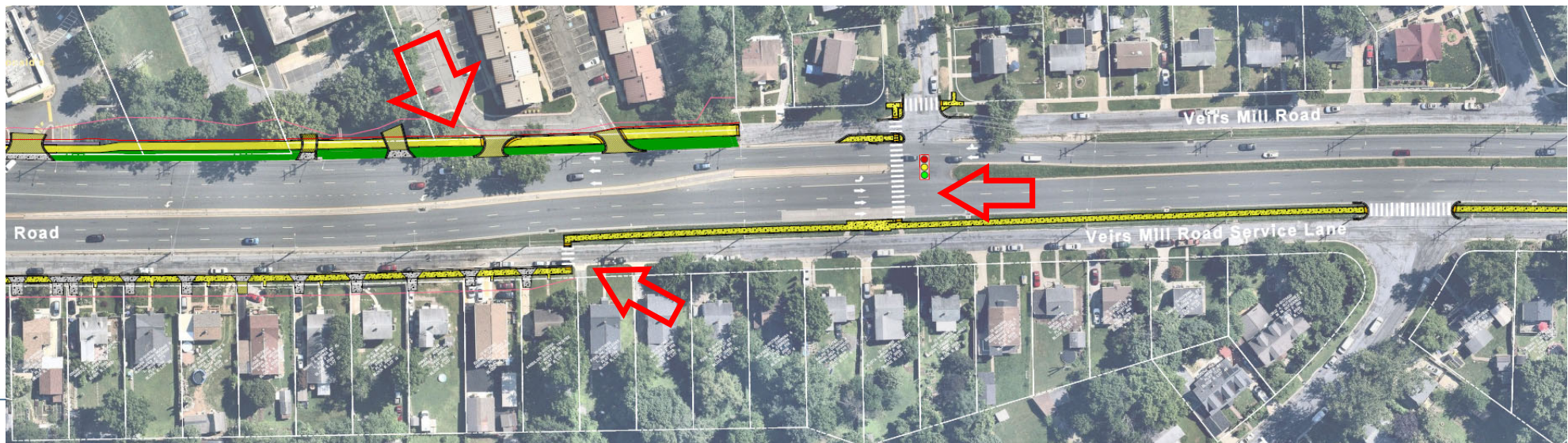
# Corridor Overview

- At Randolph Road
  - New shared-use path on the north side
  - New sidewalk on south side of service road east of Randolph Road
  - High-visibility crosswalks at Randolph Road



# Corridor Overview

- Randolph Road to Sampson Road
  - New shared-use path on the north side west of Bushey Drive
  - New sidewalk on south side of service road, then in median
  - New signalized pedestrian crossing at Bushey Drive





# Corridor Overview

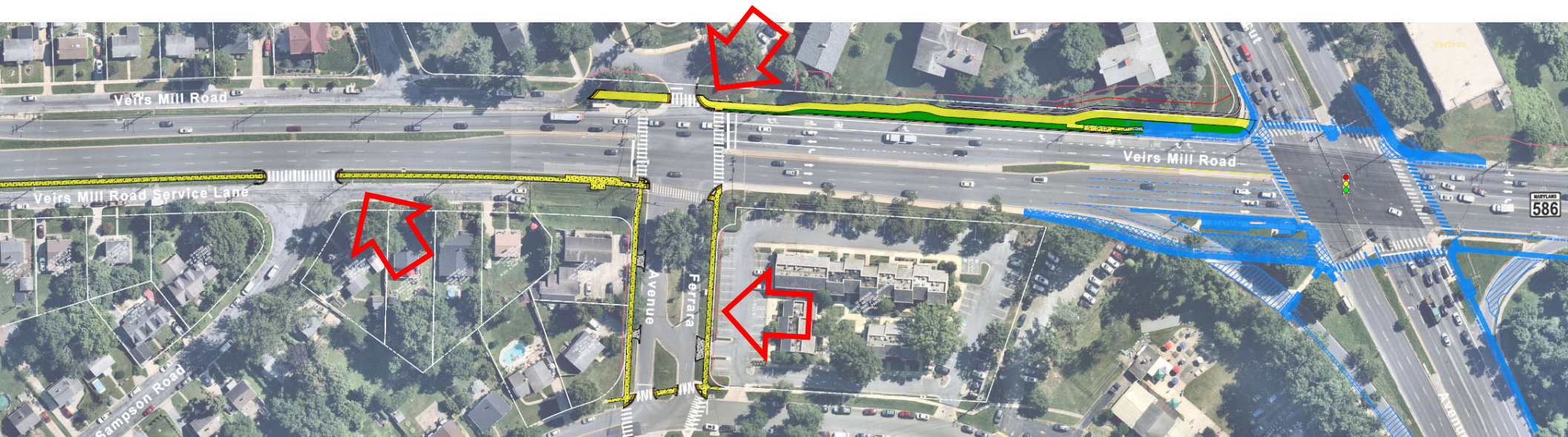
- Veirs Mill Road at Bushey Drive





# Corridor Overview

- Sampson Road to Connecticut Ave
  - New shared-use path on the north side east of Ferrara Ave
  - New sidewalk in median adjacent to southern service road
  - Upgraded sidewalks on Ferrara Ave



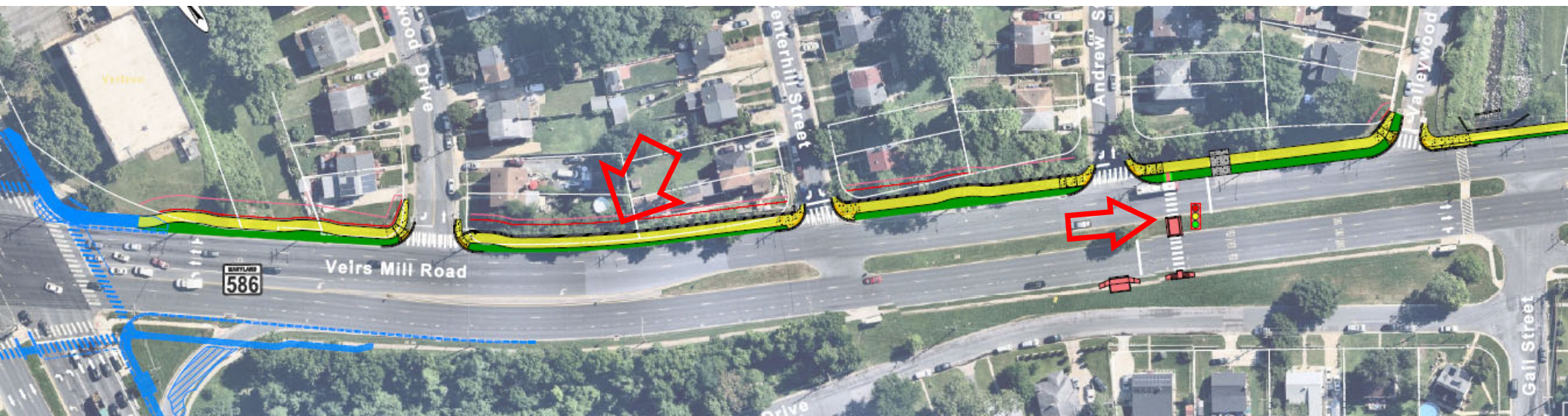
- Veirs Mill Road at Connecticut Ave





# Corridor Overview

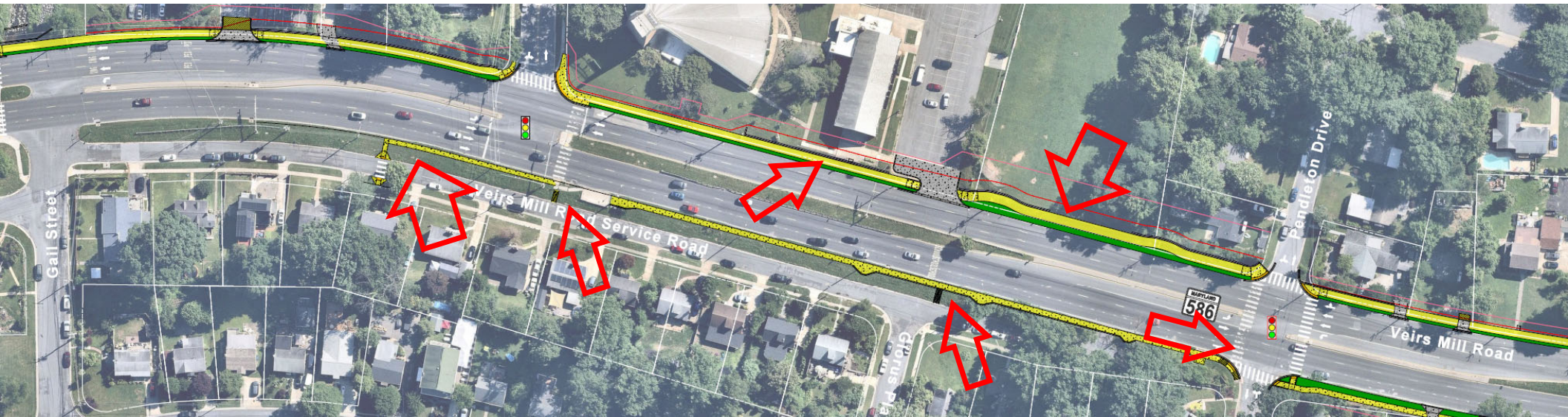
- Connecticut Ave to Gail Street
  - New shared-use path on the north side
  - As part of a separate project, the crosswalk at Valleywood/Gail is being replaced by a signalized crosswalk at Andrew St. It will be built before this project





# Corridor Overview

- Gail Street to Pendleton Drive
  - New shared-use path on the north side
  - New sidewalk on south side of main roadway east of Clairidge
  - New signal and pedestrian crosswalks at Pendleton Drive



# Corridor Overview

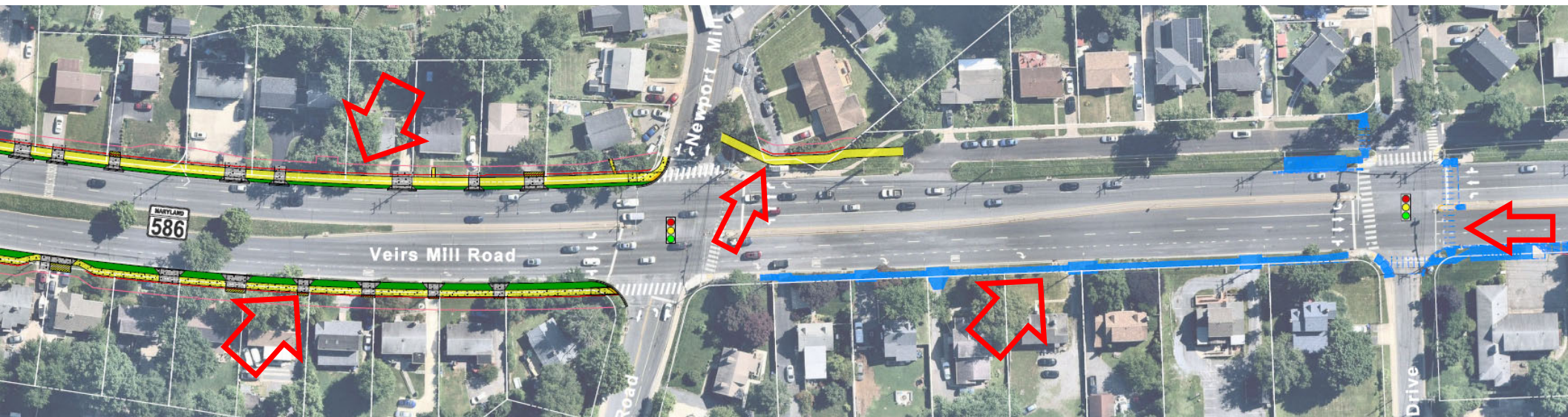
- Veirs Mill Road at Clairidge Ave





# Corridor Overview

- Pendleton Drive to Norris Drive
  - New shared-use path on the north side west of Newport Mill Road
  - New sidewalk on south side of main roadway
  - New east leg crosswalk at Norris Drive





# Corridor Overview

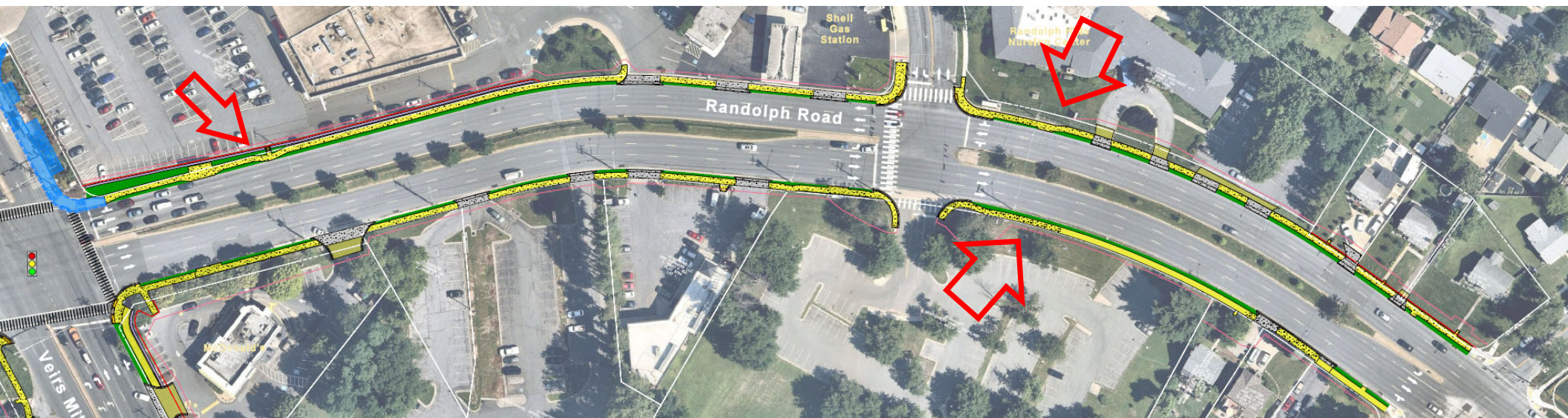
- Norris Drive to Galt Ave
  - New sidewalk on south side of main roadway
  - New signal and crosswalks at Galt Ave





# Corridor Overview

- Randolph Road Improvements
  - Reconstructed sidewalks on both sides between Viers Mill Road & Bushey Dr
  - Retaining wall and fence along Stonemill Square Shopping Center



# Corridor Overview

- Randolph Road at Stonemill Square





# Discussion

- Thank you for your attention to this presentation







# Comment Period

The public comment period will remain open until 5 p.m. on **Monday, October 17, 2022.**

Please submit comments via email to:

[Matt.Johnson@MontgomeryCountyMD.gov](mailto:Matt.Johnson@MontgomeryCountyMD.gov)

Or in writing by mail to:

Matt Johnson  
MCDOT Transportation Engineering  
100 Edison Park Drive, 4<sup>th</sup> Floor  
Gaithersburg, MD 20878

