

16. List of Figures

16.1 Forest Conservation Areas and Parks

16.2 Soils Map

16.3 Environmental Features

16.4 Zoning

16.5 Land Use

FIGURE 16.1

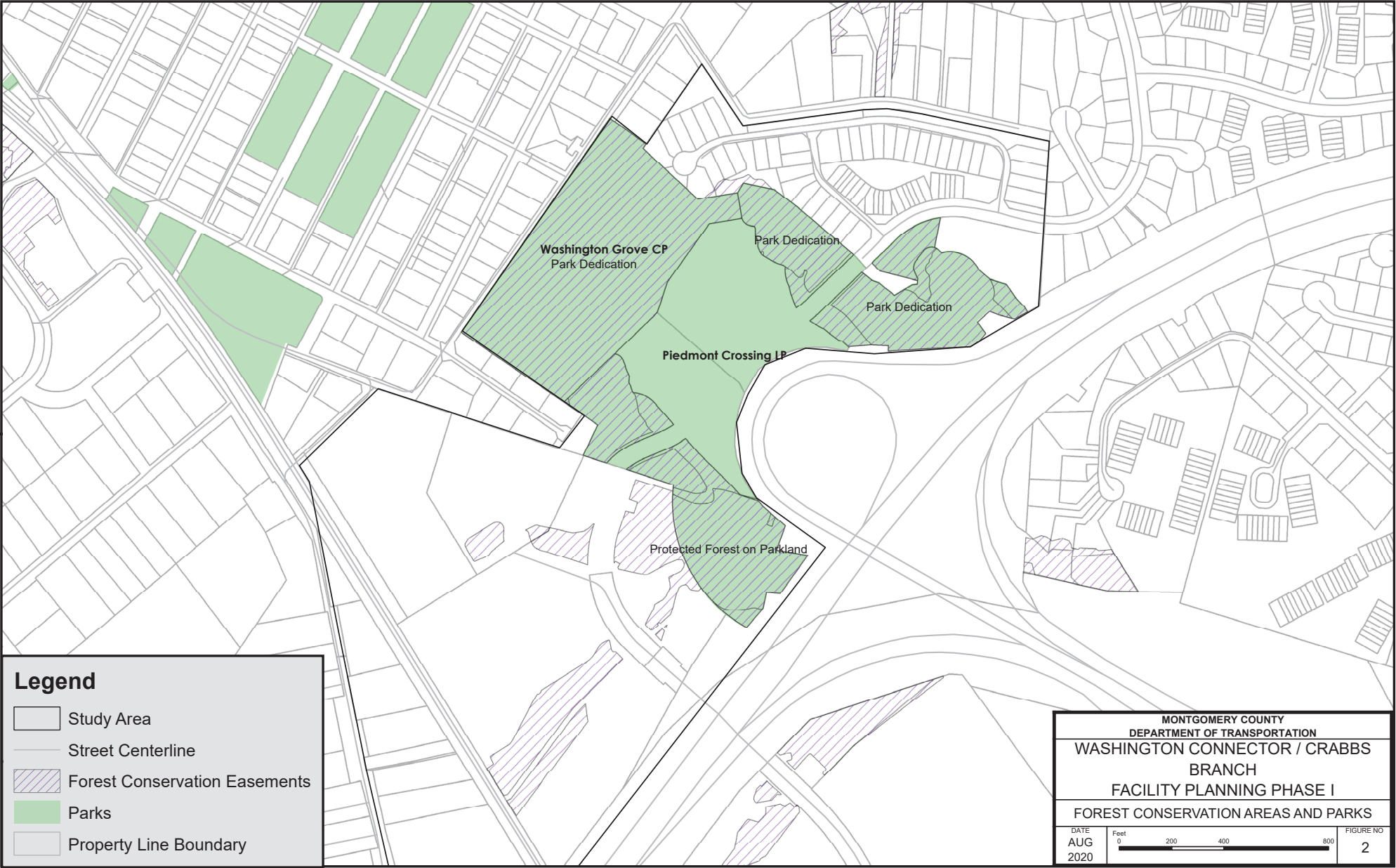


FIGURE 16.2

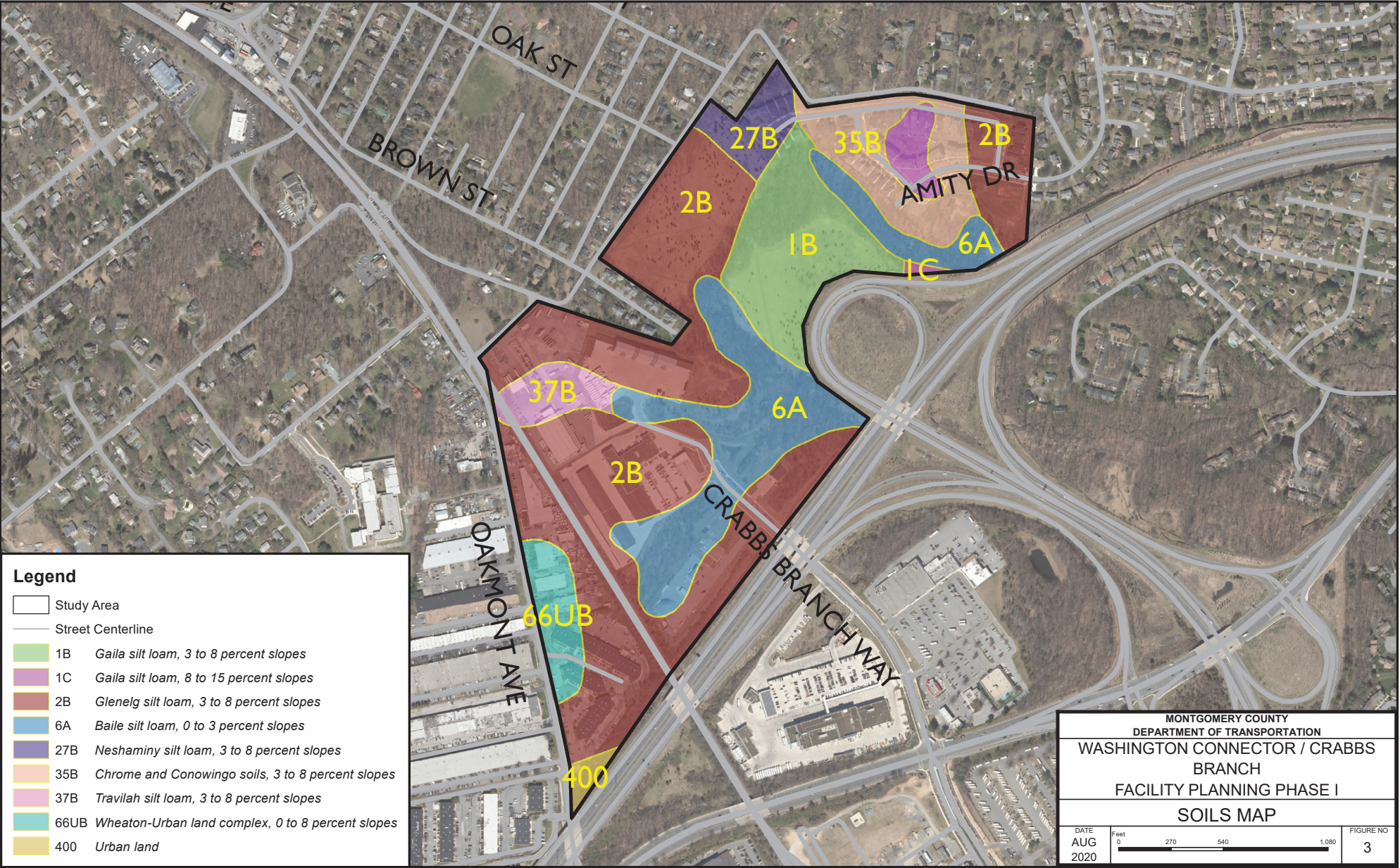


FIGURE 16.3

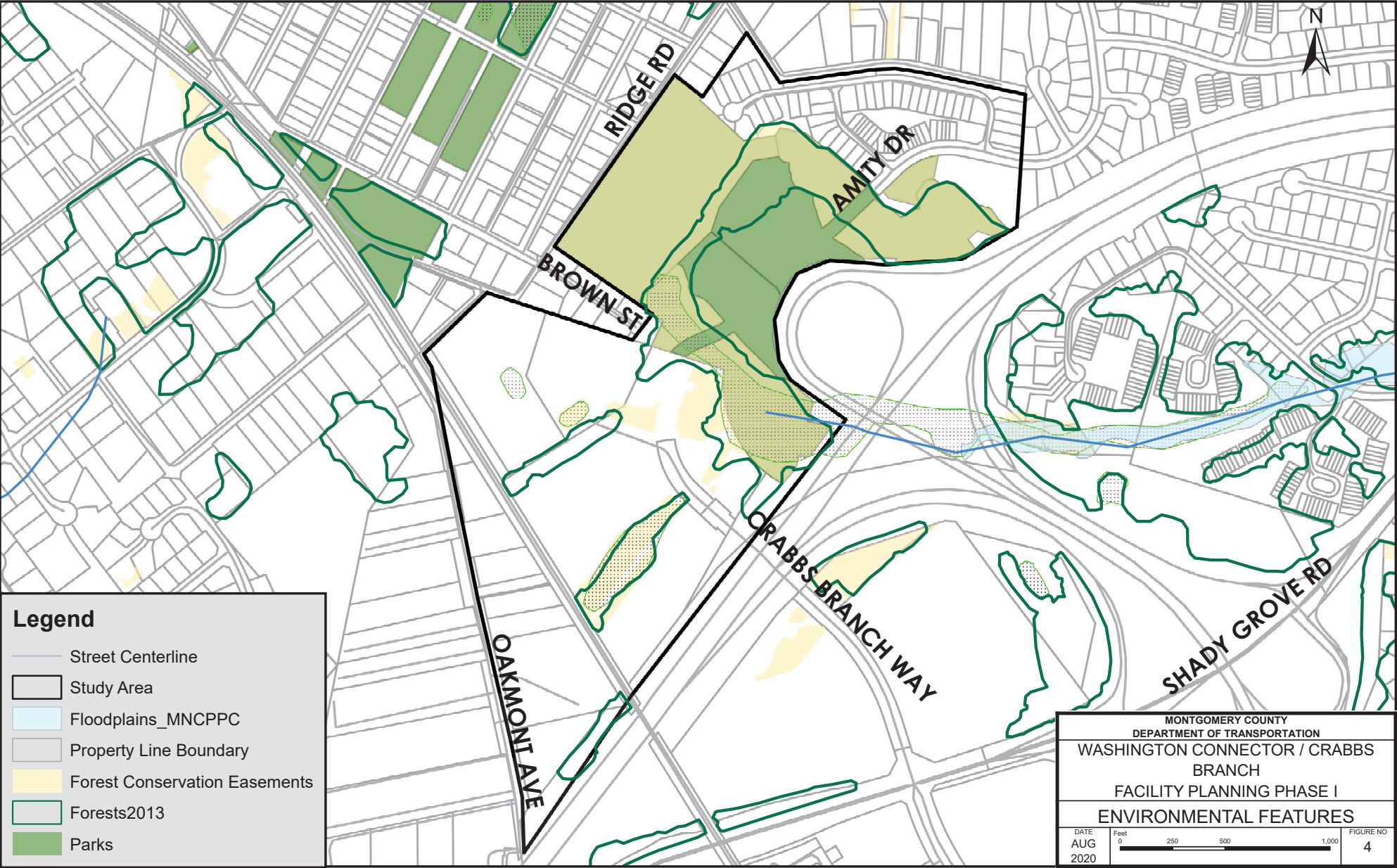


FIGURE 16.4

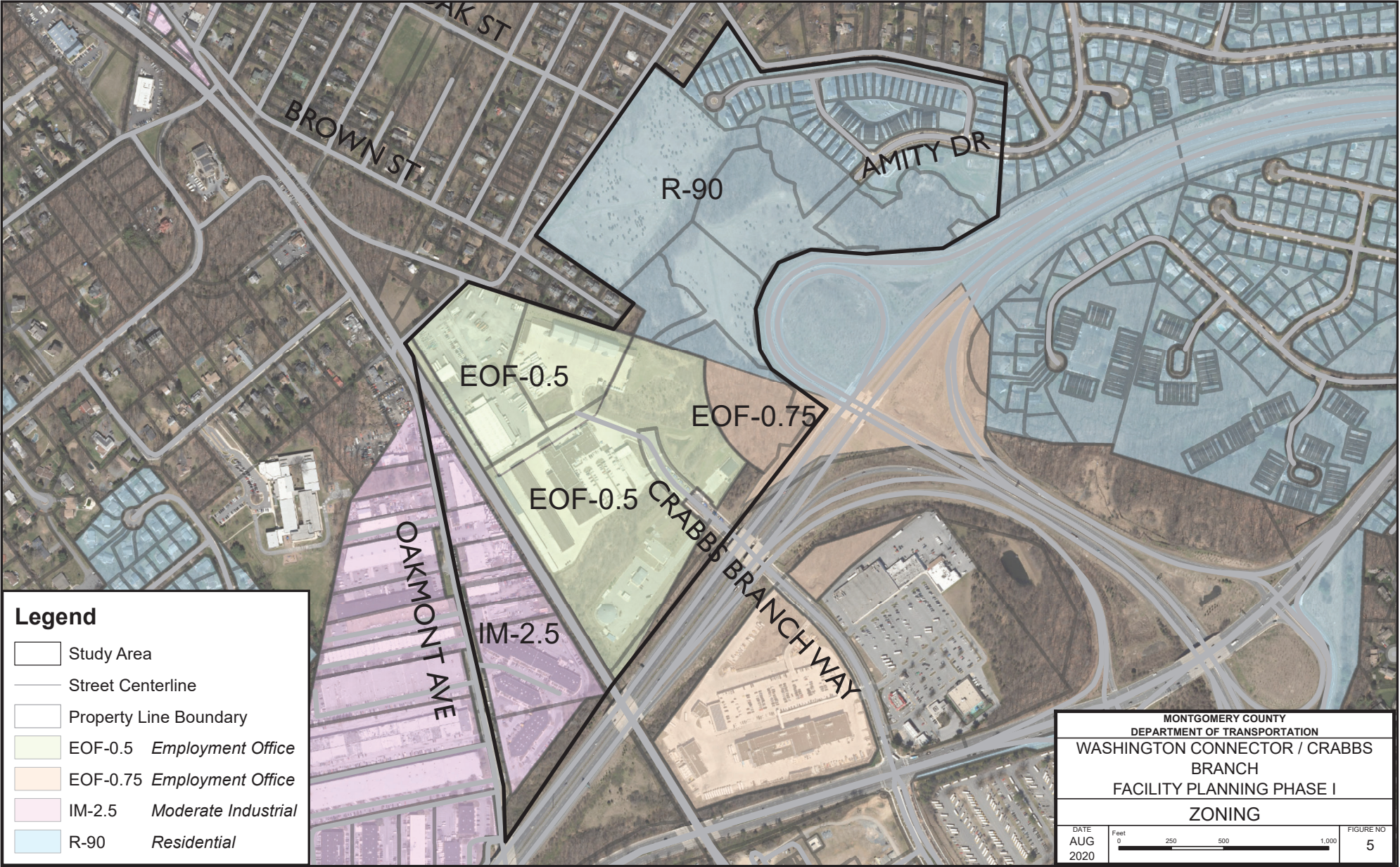
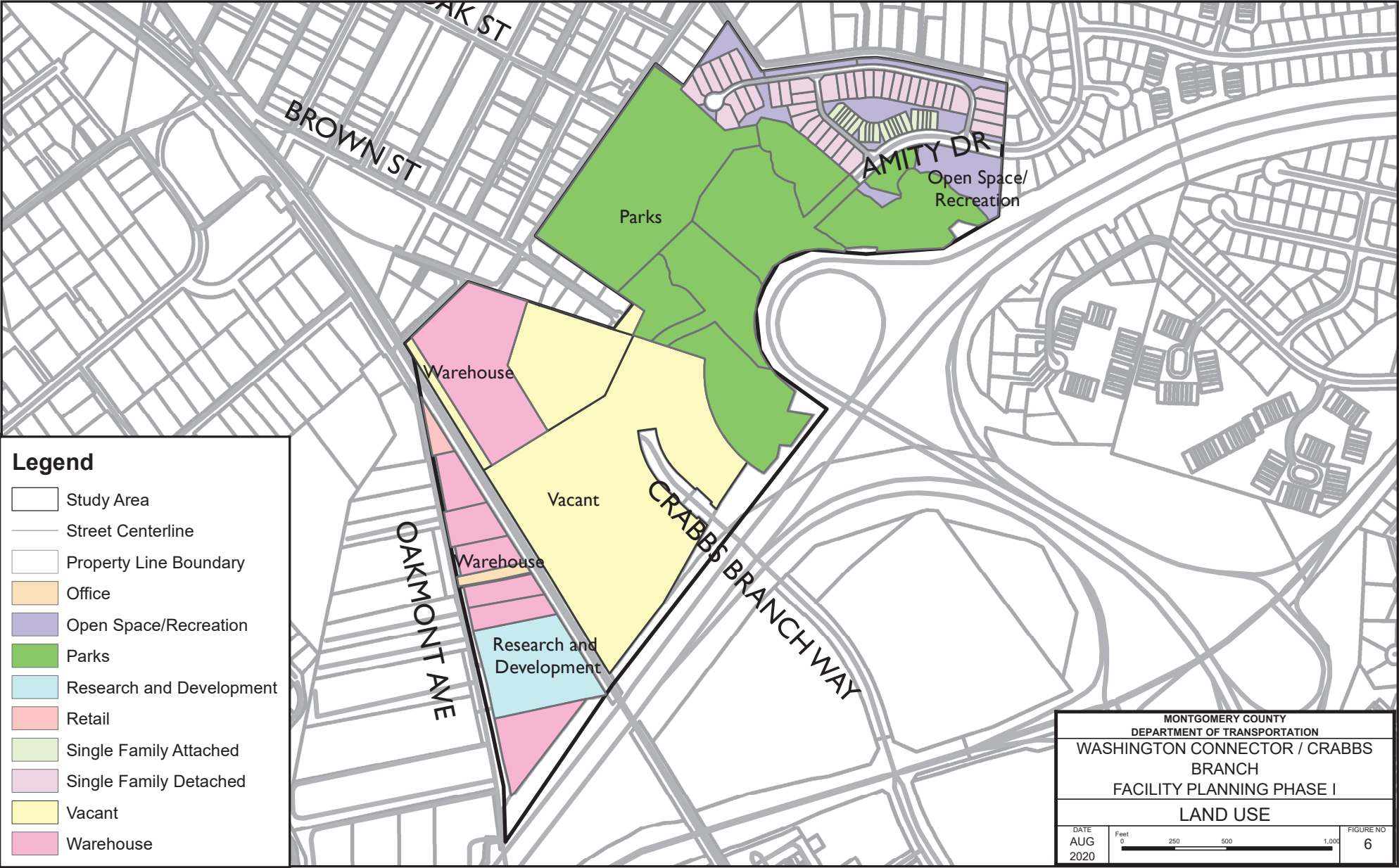


FIGURE 16.5



17. Reference and Sources

- i. <https://www.montgomerycountymd.gov/dot-dte/projects/washgroveconnector/index.html>
- ii. <https://pubs.usgs.gov/ha/730l/report.pdf>
- iii. https://www.nrcs.usda.gov/wps/portal/nrcs/detail/soils/use/hydric/?cid=nrcs142p2_053985
- iv. https://mde.state.md.us/programs/water/StormwaterManagementProgram/Documents/www.mde.state.md.us/assets/document/sedimentstormwater/Appnd_D9.pdf
- v. <https://www.montgomerycountymd.gov/water/streams/watershed-health.html>
- vi. https://geodata.md.gov/imap/rest/services/Biota/MD_LivingResources/MapServer/10
- vii. https://dnr.maryland.gov/wildlife/Documents/BIONET_FactSheet.pdf
- viii. <https://montgomeryplanning.org/wp-content/uploads/2020/03/Shady-Grove-Minor-Master-Plan-Amendment-Working-Draft-web.pdf>
- ix. https://mcatlas.org/FCE/LFdocs/40100_373.pdf
- x. https://mht.maryland.gov/secure/medusa/PDF/NR_PDFs/NR-617.pdf
- xi. <https://washingtongrovermd.org/residents/our-history/history-of-washington-grove/>
- xii. <https://washingtongrovermd.org/residents/wg-outdoors/wg-conservation-meadow/>
- xiii. <https://www.montgomeryplanning.org/community/shadygrove/documents/ShadyGroveSectorPlanFINALApprovedandAdoptedwmaps08.pdf>
- xiv. https://mcgov-gis.maps.arcgis.com/apps/Embed/index.html?webmap=32d56196878a47e788a1d7aa102020a1&extent=-77.6744,38.9151,-76.6798,39.3598&zoom=true&scale=true&disable_scroll=true&theme=light
- xv. https://www.nrcs.usda.gov/wps/portal/nrcs/detail/soils/survey/geo/?cid=nrcs142p2_053587