

# ASPEN HILL NEIGHBORHOOD GREENWAY PILOT PROJECT

PUBLIC MEETING

JUNE 6, 2019



**MC DOT**



## Outline

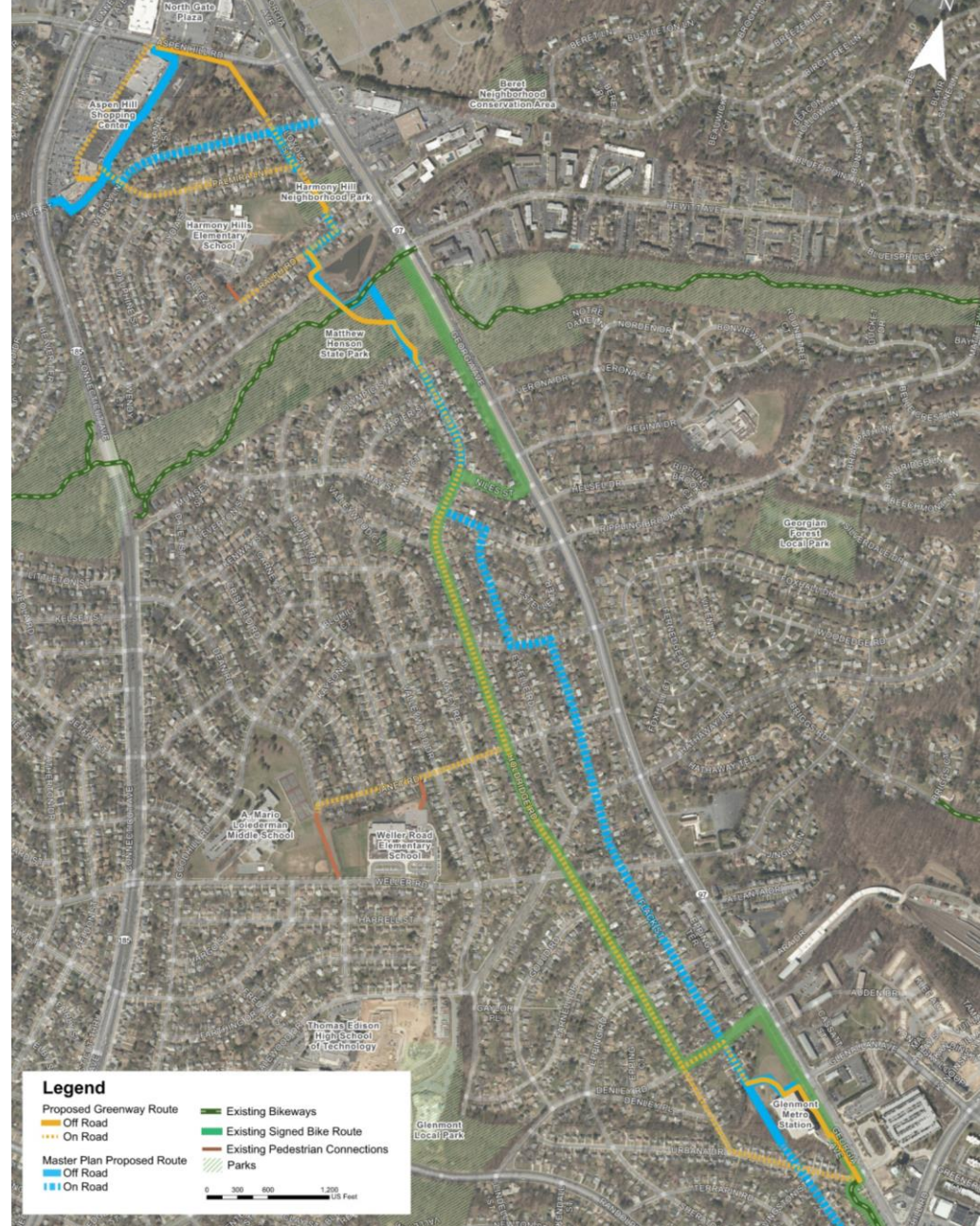
- Project Overview
- Proposed Improvements
- Q&A

# Project Overview

## Aspen Hill Neighborhood Greenway Pilot Project

### Glenmont Metro to Shopping Centers Route

- Uses low motorized traffic volumes and speeds
- Parallel to Georgia Avenue
- Connectivity between:
  - County-Wide Trail Network
  - Glenmont Metro
  - Shopping Centers
  - Neighborhood Schools



# Neighborhood Greenway

*Guidance:*

## **BICYCLE FACILITY DESIGN TOOLKIT**

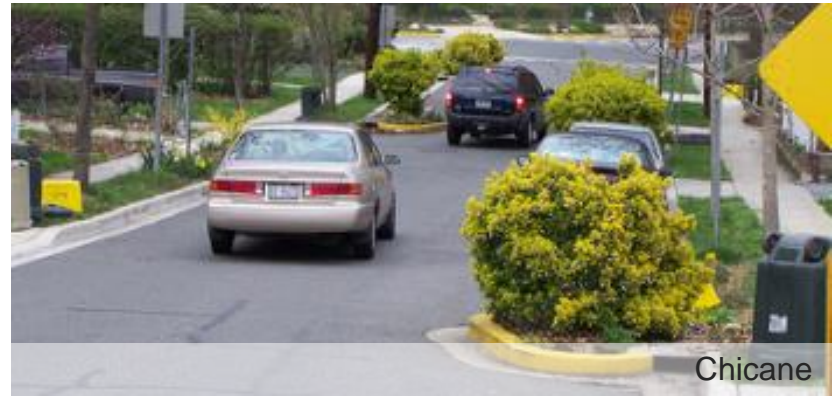
Montgomery County Planning Department

(July 2017)

- Prioritize Walking and Bicycling
- Low Traffic Volumes and Speeds
- Residential Streets
- Traffic Calming Devices
- Crossing Improvements
- Signed Route



Neighborhood Traffic Circle



Chicane



Curb Extension

### REFERENCES

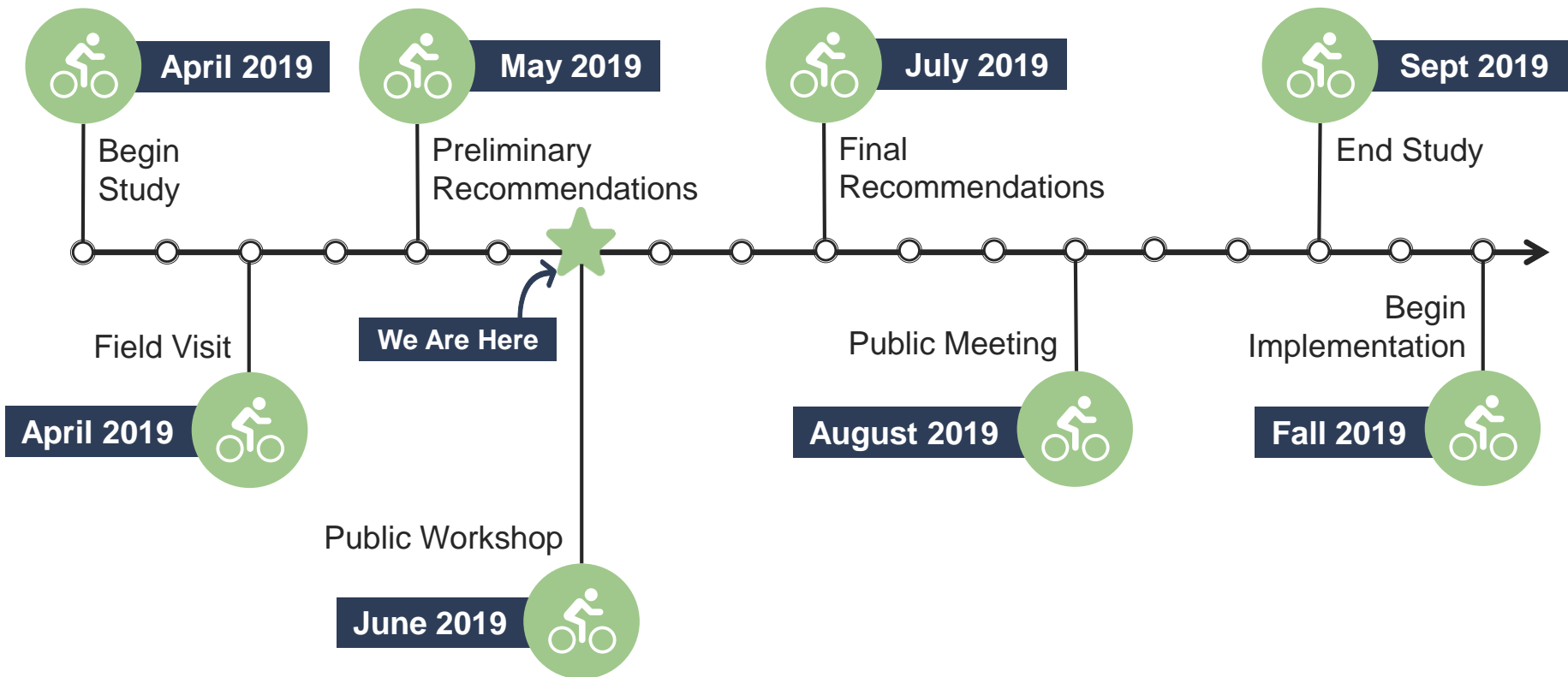
IPBI, Alta Planning + Design, Portland State University, *Bicycle Boulevard Planning and Design Guidebook*. 2009.

NACTO, *Urban Bikeway Design Guide*. 2nd Edition.

Portland Bureau of Transportation, *Neighborhood Greenway Assessment Report*. 2015.

# Project Overview

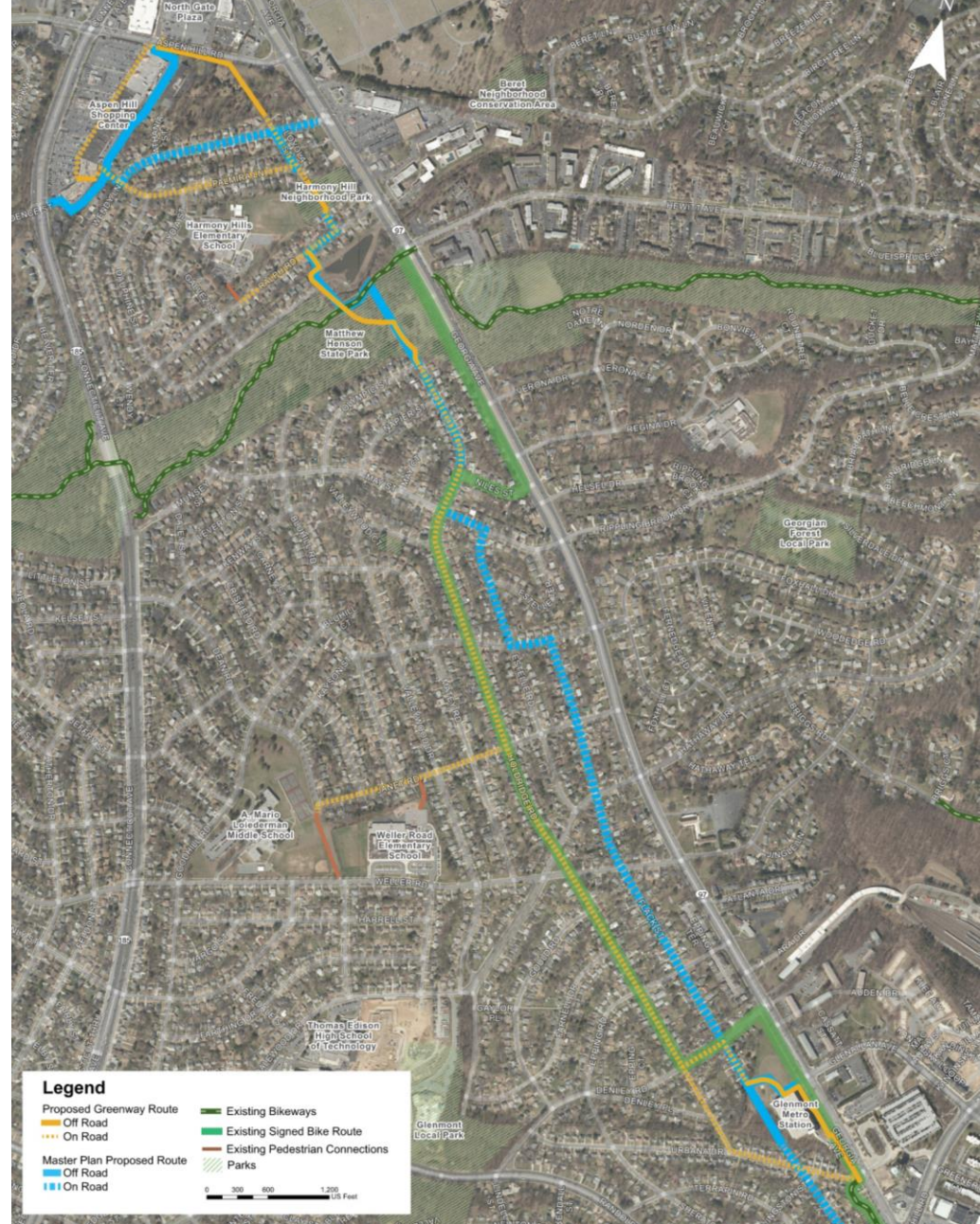
## Pilot Project: Accelerated Schedule



# Proposed Improvements

## Proposed Alignment

- Primary Route
  - Palmira Lane
    - Connection to Aspen Hill Shopping Center
  - Loyola Street
    - Connection to North Gate Plaza
    - Coordinate access through Montgomery County Humane Society Campus
  - Ralph Road
  - Holdridge Road
- Spur Route Connections
  - Janet Road to Schools
  - Denley Road and Flack Street to Glenmont Metro



# Proposed Improvements

## Short-Term Recommendations

- On-Road Improvements
  - Wayfinding Signing / Branding
  - Pavement Markings



Bike Route Signing - Niles Street and Holdridge Road



Bicycle Boulevard Pavement Marking  
Image Source: NACTO

# Proposed Improvements

## Short-Term Recommendations

- Intersection / Speed Management Improvements
  - Bicycle Forward Stop Bars
  - Curb Extensions
  - Neighborhood Traffic Circles
  - Switching stop signs to side street stop only



Intersection Improvements – Bicycle Forward Stop Bars  
*Image Source: NACTO*



Intersection Improvements – Curb Extension  
*Image Source: NACTO*



# Proposed Improvements

## Short-Term Recommendations

- Aspen Hill Shopping Center & North Gate Plaza
  - Convenient Bicycle Parking
  - Improved Bicycle Access through Parking Lots
    - Bicycle cut throughs in speed humps
    - Shared Lane Markings (Sharrows)



Aspen Hill Shopping Center- Potential Bicycle Parking Location



Aspen Hill Shopping Center - Improved Bicycle Access through Parking Lots

Image Source: Google Street View – July 2018

# Proposed Improvements

## Longer-Term Recommendations

- Access Management
  - Remove Bollards
  - Restrict Parking
  - Evaluate Lighting
  - Pave connections between on-road and off-road segments



Aspen Hill Shopping Center Access -  
West End of Palmira Lane

# Proposed Improvements

## Longer-Term Recommendations

- Off-Road Connections
  - Harmony Hill Neighborhood Park
  - Matthew Henson Trail
  - Montgomery County Humane Society Campus



Harmony Hill Neighborhood Park Access -  
South End of Loyola Street



Matthew Henson State Park Access -  
North End of Holdridge Road



## Contact



Kyle Lukacs, AICP  
Project Manager



240-777-7207



kyle.lukacs@  
montgomerycountymd.gov



<https://www.montgomerycountymd.gov/dot-dte/projects/aspenshill/index.html>



**Questions?**

